

# User manual

## VR Integrated device HXSD

### **Enter, Back, and Nibiru button on AIO HDM**

1. Press the confirm button to enter the lower page or adjust related functions
2. Press the return button on the home page to exit the application; click the return button on the page to return to the parent page.
3. Press the Nibiru button to call up the system menu, including the brightness button and the application button.
4. Some application and pages support AIO direction buttons to adjust the operation.

### **VR Launcher**

VR Launcher uses head attracting to select the target. Press the confirm button on AIO or remote control to determine the operation mode; a variety of buttons on the machine to play a supporting role.

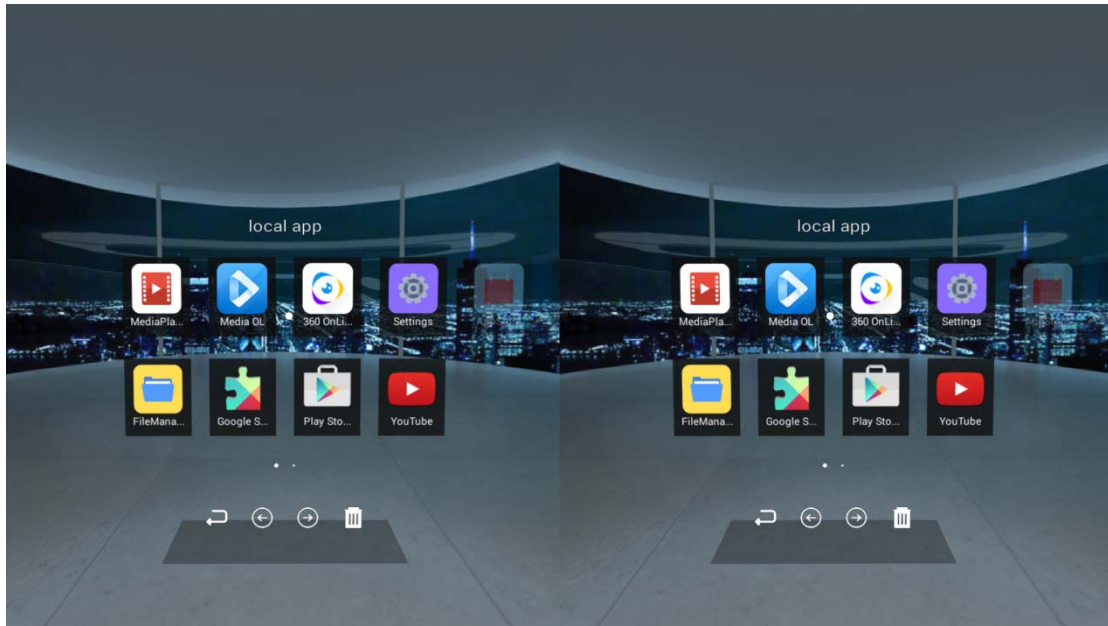
#### **Home page**

- 1.VR Launcher uses head attracting to select the target. Press the confirm button on AIO or remote control to enter the applications or pages.



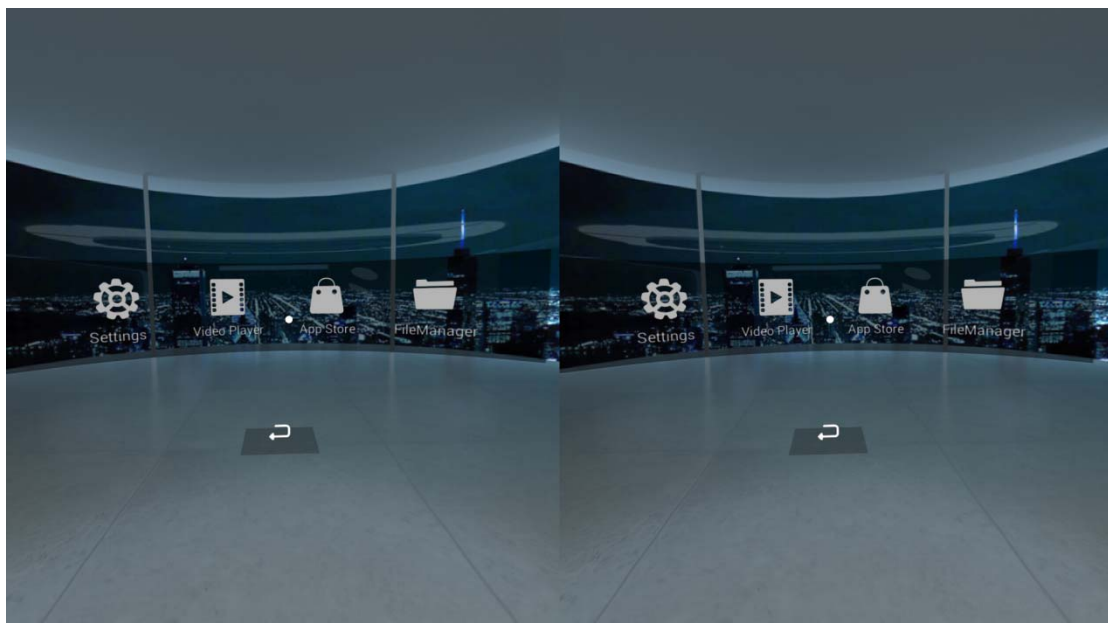
## Applications

1. Applications can be achieved through three ways to switch the page, including head attracting to select enter button, press the confirm button on AIO or remote control to swipe or Click on the left and right side of the page to switch.
2. There are 4 function bottoms below the list: the left and right buttons can switch the list, delete button to delete the APP, the return button can return to the home page.
3. Press the back button to return to the home page.



## Tool

- 1.Tool uses head attracting to select the target. Press the confirm button on AIO or remote control to enter the page.
- 2.Press return button on OIA or return button below the list can return the home page.



- 3.Setting and file browser pages use AIO direction and confirm button to operate.

# Media

Media uses head attracting to select the target. Press the confirm button on AIO or remote control to determine the operation mode; a variety of buttons on the machine to play a supporting role.

## Operation mode on List

1. Tool uses head attracting to select the target. Press the confirm button AIO or remote control to enter the page. The page can be swiped by direction button on AIO or on page.

2. There are 4 function buttons below the list: scan button can scan the medias again, the left and right buttons can switch the list, delete button to delete the APP, the return button can return to the home page.

3. Click return button on AIO to return to home page.



## PPTV PLAYER

In PPTV Player , use head mouse to move cursor , press the confirm button of AIO headset or remote to select in menu.

### Video list

1.In video list , move cursor to the movie which want to watch , press the confirm button then enter detail page , move cursor to “play” or “back” button to play the video or back to video list.

2.On the bottom of video list , there are “left page” and “right page” to switch to left and right video list page.

3.Click “back” button on the AIO Headset to exit PPTV player.



### Playing Page

1.In the play page , bend the head (move down the cursor) can recall the playing progress bar , move cursor on playing page except progress bar and p press the confirm button to lock screen.

2.Options above progress bar : switch playing mode , play/pause ,brightness adjustment , volume adjustment , playing progress and back

3.Click “back” button on the AIO Headset to exit playing page.

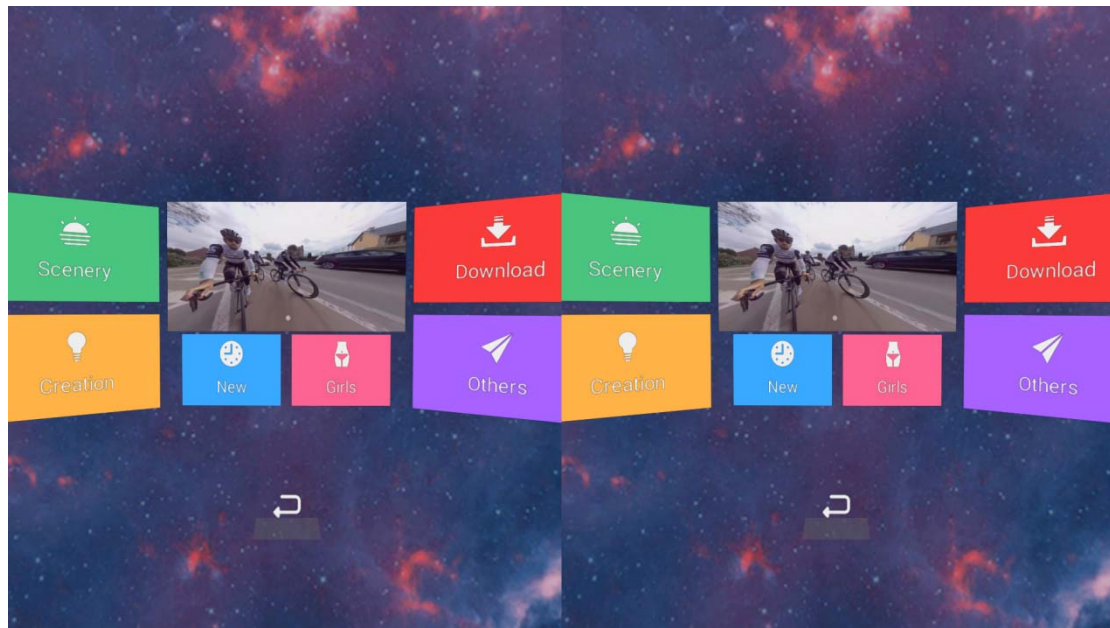


## Pano

In App “Pano” , use head mouse to move cursor , press the confirm button of AIO headset or remote to select.

### Homepage

- 1.Move cursor to select in menu , press the confirm button to enter menu.
- 2.Click back on the bottom of screen to exit app.
- 3.Move cursor on “Download management ” and press the confirm button to enter . There are 2 options in “Download management” : “Downloading” and “Downloaded”
- 4.In “Downloading” , click downloading video to pause download , reclick to continue download. There are 3 options: back , switch page and delete. Click delete option and confirm delete to delete video selected.
- 5.In “Downloaded” , click downloaded video to play the video . There are 3 options as “Downloading” :back , switch page and delete.



## Video list

1. Move cursor to video then appear "Download" , press the confirm button to download this video, this video can be managed and watched in "Download management" .
2. Move cursor on the next page and press the confirm button to switch the page , use "Left" and "Right" button on AIO Headset to can also switch the page.
3. On the bottom of list page , there are 3 option: "Left" " Right" to switch page , "back" to exit the App

## Instructions for Display

1. On Display page, use focus and press the confirm button on headset or remoter to make choice.
2. Look down to view the display progress bar of video, focus on the area besides the display progress and press confirm button to lock the screen.
3. There are four function buttons and video progress bar on display page, they are play and pause shift, brightness and volume adjust, video display progress and back to list page.
4. Press back to return to previous page.



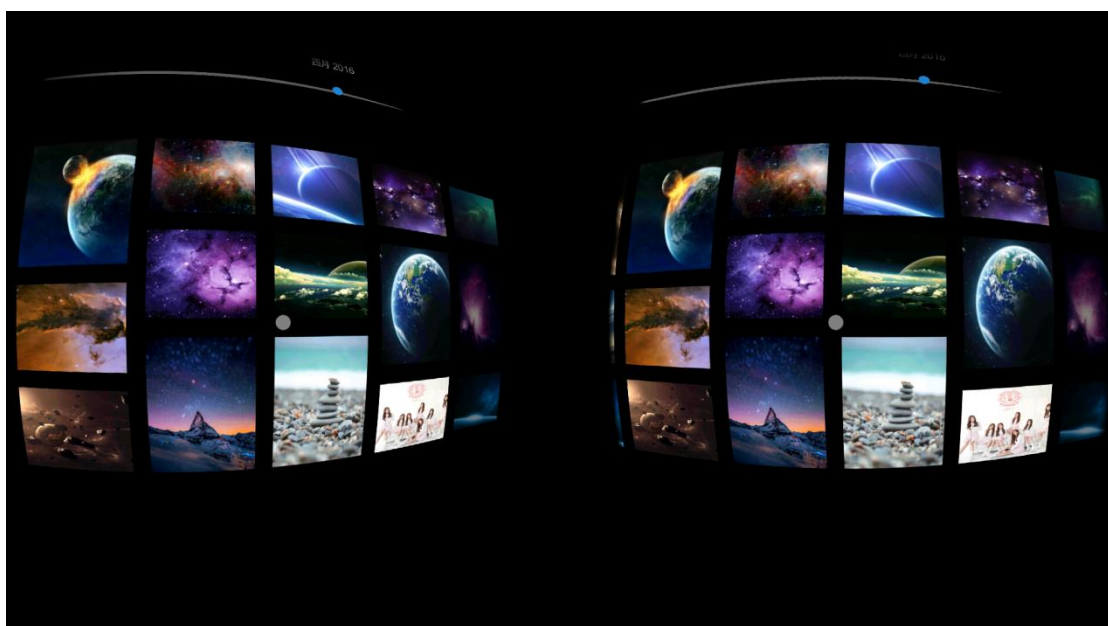


## Photo Wall

In Photo Wall page, use focus and press the confirm button on headset or remoter to make choice.

### Instructions

- 1.Focus on the other page and press confirm button to shift page.
- 2.Focus on the present page and press confirm button to enter the image.





3. Press confirm to view the next page on photo page.

4. In photo page, press back button on headset to return to photo wall, and in photo wall page, press the same button to exit to the main page.



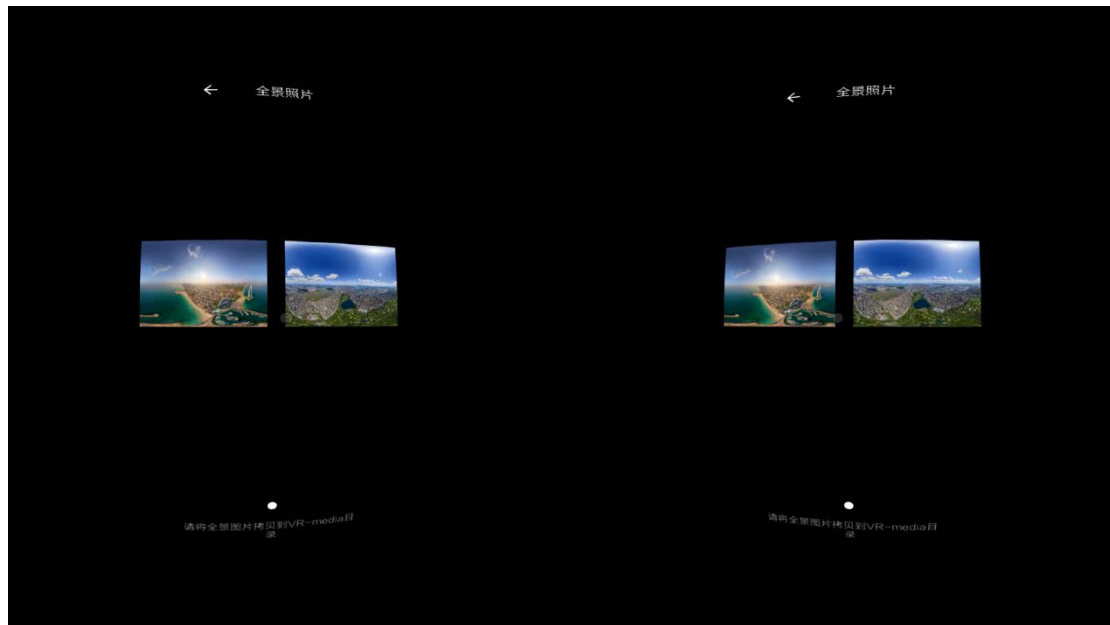
## **Pano Photo**

In PanoPhoto page, use focus and press the confirm button on headset or remoter to make choice.

### **Instructions**

1.Focus on the other page and press confirm button to shift page.

2.Focus on the present page and press confirm button to enter the image.



3.In photo page, press back button on headset to return to photo wall, and in photo wall page, press the same button to exit to the main page.

4.In photo page, press confirm to view the next page.



## **FCC Statement**

This device complies with Part 15 of the FCC rules. Operation is subject to the following two conditions: 1) this device may not cause harmful interference, and 2) this device must accept any interference received, including interference that may cause undesired operation.

Note: This equipment has been tested and found to comply with the limits for a Class B digital device, pursuant to part 15 of the FCC Rules. These limits are designed to provide reasonable protection against harmful interference in a residential installation. This equipment generates uses and can radiate radio frequency energy and, if not installed and used in accordance with the instructions, may cause harmful interference to radio communications. However, there is no guarantee that interference will not occur in particular installation. If this equipment does cause harmful interference to radio or television reception, which can be determined by turning the equipment off and on, the user is encouraged to try to correct the interference by one or more of the following measures:

- Reorient or relocate the receiving antenna.
- Increase the separation between the equipment and receiver.
- Connect the equipment into an outlet on a circuit different from that to which the receiver is connected.
- Consult the dealer or an experienced radio/TV technician for help.

Changes or modifications not expressly approved by the party responsible for compliance could void the user's authority to operate the equipment.