

Font: Arial

XXX - Consecutive No.

Customer Logo

Data Matrix

Customer Part Number - Date  
YY - Year WW - Week D - Day

Continental Part Number

DD-Day MM-Month YY-Year

Bluetooth MAC address

Hardware Version

Software Version

Homologation for Canada

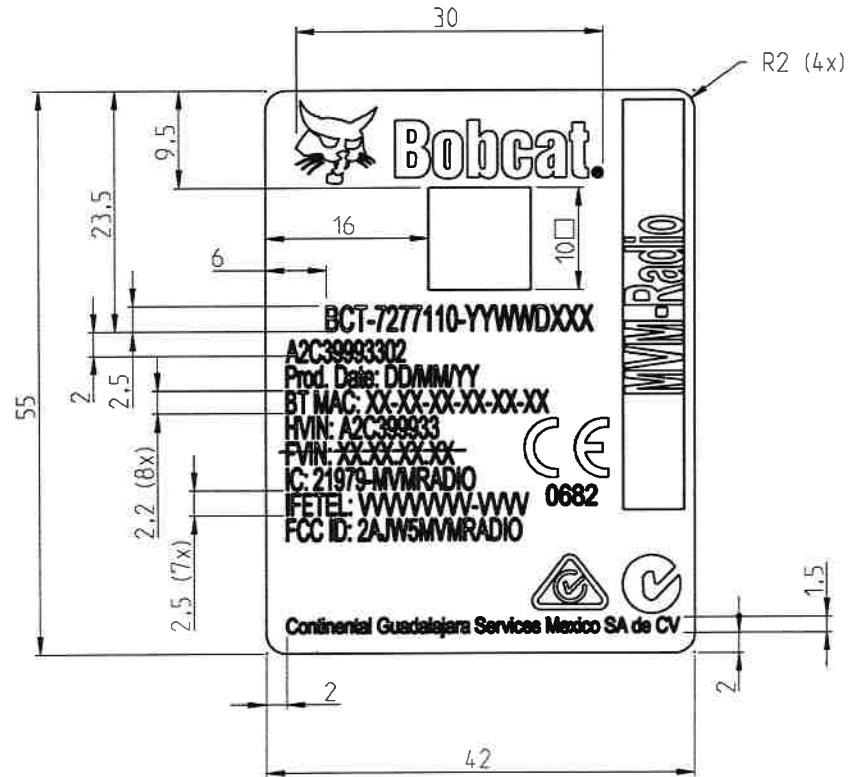
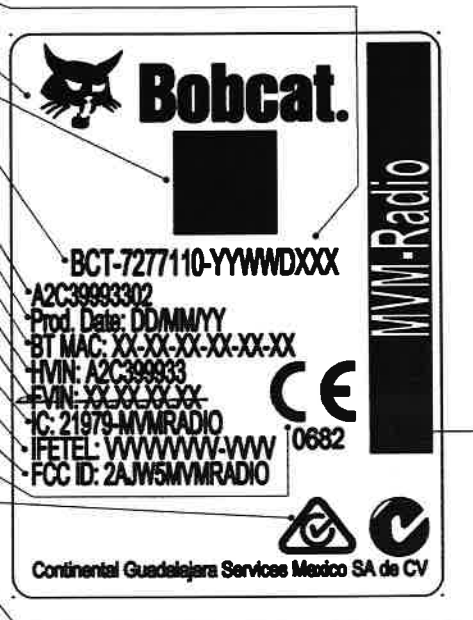
Homologation for Mexico

Homologation for United States

Homologation for European Union

Homologation for Australia

Module Name



Content for Data Matrix (22x22)

Position	Description	Content
1-11	Bobcat - No.	see SAP BOM
12	Delimiter	dash ( - )
13-23	A2C-number	see SAP BOM
24	Delimiter	dash ( - )
25-35	FVIN	SW Version
36	Delimiter	dash ( - )
37-45	HVIN	HW Version
46	Delimeter	dash (-)
47-54	Serial No. (8 digits)	depending on manufacturing date

Materialnummer / material number		A2C39998700	
Document version	Previous version	Changed items	Change description (including number)
AB	-	-	ECM 10289726 initial version label - Bobcat DIS NGD Radio
Surface	OL	-	-
Material	A2C53216399 (Polyester foil)		
Weight	calculated 0.2 g ± 50%	weighed	- g ± -%
3D-Model	40904298_CAD_000.AB.5.In Work.PART		Scale
Dimensions in millimeters	Drawing 40904298_DRW_000.AB.5.In Work		2:1
For internal use only			
Designed by	Manuel Jimenez-Barragan	Date	2017-01-19
Released by		Department	A_CEP_PER_000000000005-R&E
Continental	Designation	certification label	BOBCAT_DIS_NGD
	Typenschild		DRW
	Document key	40904298 DRW 000 AB	Pages
			1 of 1

Auxiliary dimension DIN 406 - 10   
 Theoretical dimension ISO 1101   
 Part edges ISO 13715  
 Unfinished dimension DIN 406 - 10   
 Surface quality ISO 1302   
 Tolerances Size ISO 14405(E)

Continental Automotive Guadalajara Mexico, S.A. de C.V. Tlaquepaque

Copyright (C) Continental AG 2012

CAD-System: Creo 2

A3 : 2012-02

updated: 2017-03-10

Transmittal, reproduction, dissemination and/or editing of this document, as well as  
 utilization of its content for communication purposes, is prohibited without express  
 written permission of the responsible department. All rights reserved.