

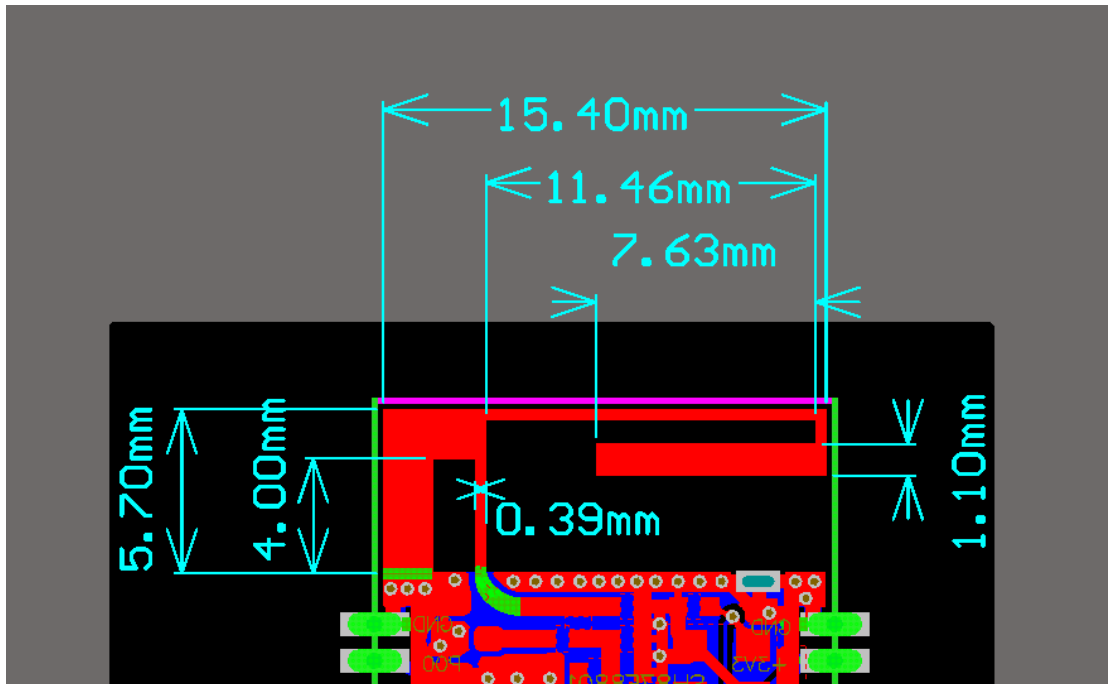
2.4GHz Antenna Specification

Manufacturer: Shenzhen Jiexinrui Technology Co., Ltd.

Address: 4 / F, Building 3, Xin Xintian Industrial Park, Xinsha Road, Shajing Street, Bao'an District, Shenzhen , Guangdong, China

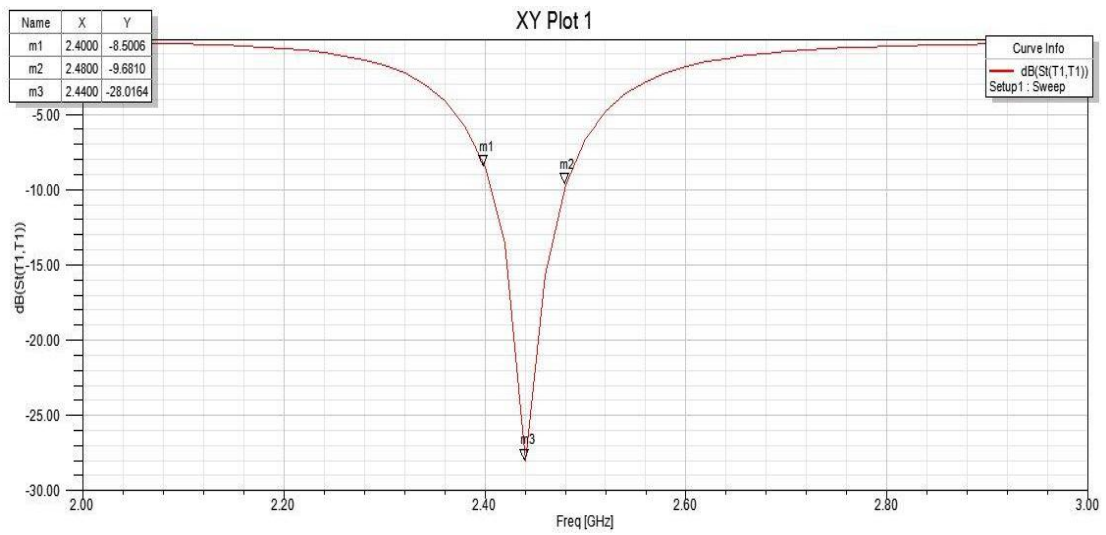
ANT Test Labs: SINOWEALTH Electronic Ltd.

1、 Antenna size:

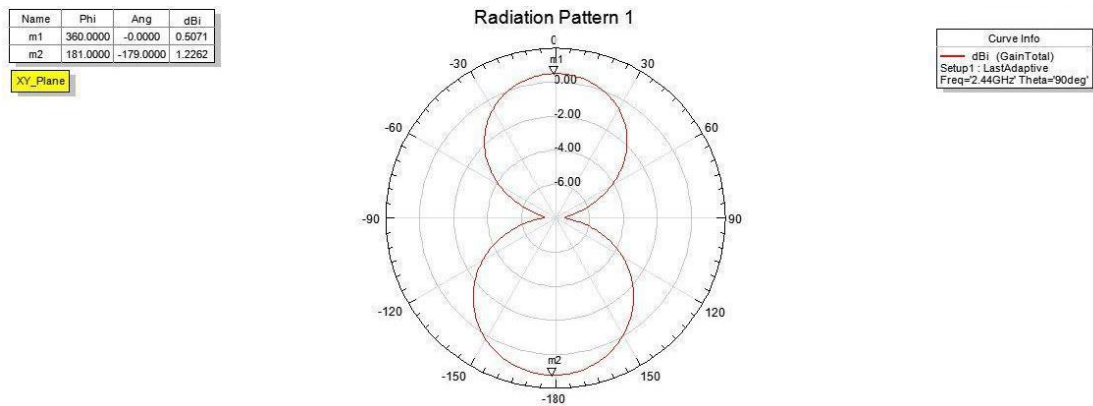


The Antenna type is PIFA , the plate is two layers of FR 4, and the plate thickness is 0.8mm

2、 Antenna performance S11

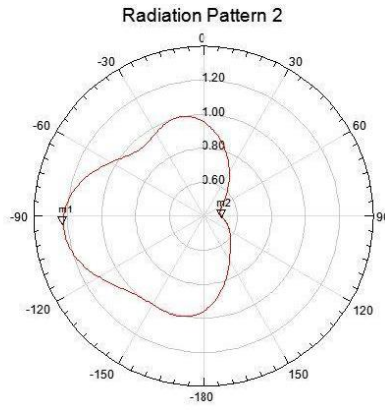


3、 2D Radiation Patterns:



Name	Theta	Ang	dBi
m1	-93.0000	-93.0000	1.2257
m2	92.0000	92.0000	0.5101

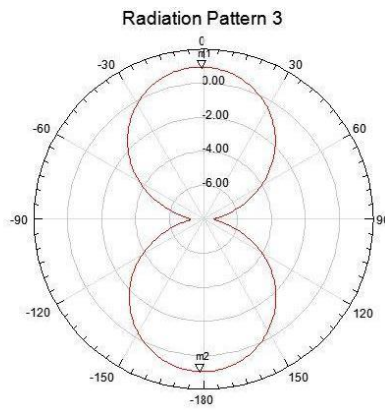
XZ_Plane



Curve Info	
—	dBi (GainTotal)
Setup1 : LastAdaptive	
Freq=2.44GHz Phi=90deg	

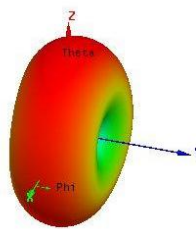
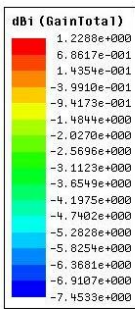
Name	Theta	Ang	dBi
m1	0.0000	0.0000	0.9667
m2	-179.0000	-179.0000	0.9683

YZ_Plane



Curve Info	
—	dBi (GainTotal)
Setup1 : LastAdaptive	
Freq=2.44GHz Phi=90deg	

4、 3D Radiation Patterns



5、 Antenna Gian and Efficiency

Appendix A

<i>Frequency</i>	<i>Max Total Gain</i>	<i>Effeciency</i>
<i>MHz</i>	<i>dBi</i>	<i>%</i>
2400	-0.46	32
2402	-0.39	32
2404	-0.35	32
2406	-0.32	33
2408	-0.3	33
2410	-0.25	33
2412	-0.22	33
2414	-0.18	34
2416	-0.13	34
2418	-0.06	34
2420	0	35
2422	0.05	35
2424	0.09	35
2426	0.16	35
2428	0.24	35
2430	0.31	35
2432	0.39	36
2434	0.5	36
2436	0.65	37
2438	0.87	38
2440	1.22	38
2442	0.96	38
2444	0.73	37
2446	0.61	37
2448	0.53	37
2450	0.44	37
2452	0.4	36
2454	0.35	36
2456	0.27	35
2458	0.19	35
2460	0.12	35
2462	0.07	35
2464	-0.01	34
2466	-0.08	34
2468	-0.14	34
2470	-0.23	33
2472	-0.27	33
2474	-0.33	33
2476	-0.37	33
2478	-0.4	33
2480	-0.42	33
2482	-0.43	33