



User Manual

Instruction Manual (ML52RA)

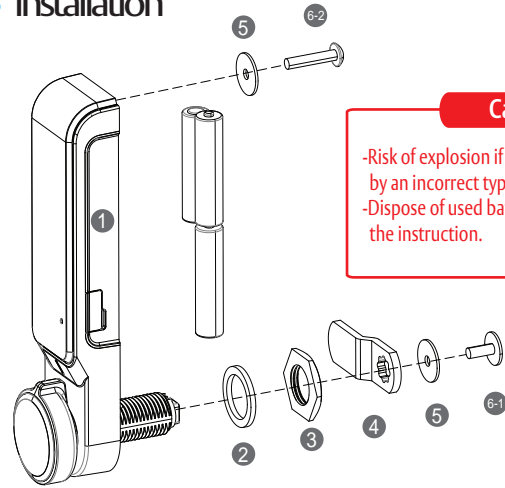
● Package contained



- ① ML52RA lock x1
- ② Rubber ring washer x1
- ③ M6nut x1
- ④ Cams x2 (1 flat, 1 offset)
- ⑤ M4 washer x2
- ⑥ Bolts x5
 - 6-1 M4x10 cam fixing
 - 6-2 M4x10 upper fixing for 1-5mm door
 - M4x20 upper fixing for 10-15mm door
 - M4x25 upper fixing for 15-20mm door
 - M4x30 upper fixing for 20-25mm door

※ Use three 1.5V AAA type Alkaline batteries.

● Installation

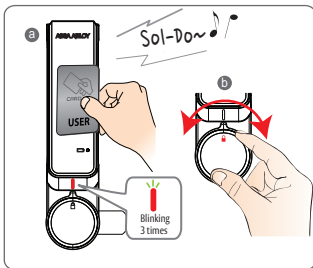


Caution

- Risk of explosion if battery is replaced by an incorrect type.
- Dispose of used batteries according to the instruction.

● How to use the Usercard (Public mode)

Lock the door

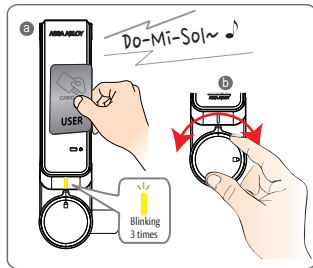


- a Touch the User Card
-Blinking Red LED 3 times and melody sound "Sol-Do~"
- b Turn the handle to the lock position

Specific

- 13.561 MHz
- 4.5Vdc (AAA 1.5x3)

Unlock the door

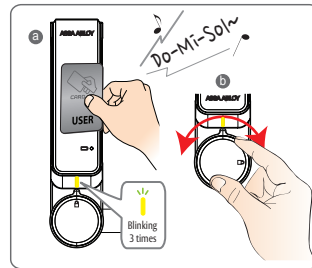


- a Touch the User Card
-Blinking yellow LED 3 times and melody sound "Do-Mi-Sol~"
- b Turn the handle to the open position and open the door

- ※ **Public Mode (One Time use)**
- User Card will be erased after unlock and stay open for next user.

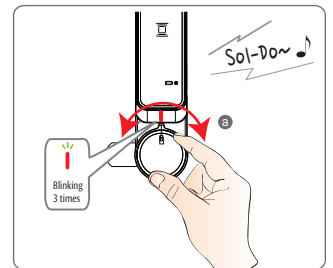
● How to use the User card (Private mode)

Unlock the door



- a Touch a registered User Card
-Blinking yellow LED 3 times and melody sound "Do-Mi-Sol~"
- b Turn the handle to the open position and open the door

Lock the door

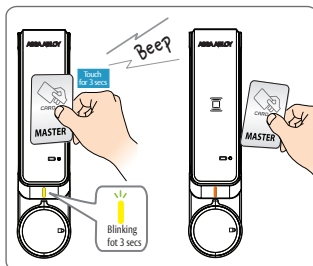


- a Close the door and turn the handle to the lock position

- ※ **Private Mode (Assigned use)**
- The lock automatically locked in 3 seconds, just turn the handle to the lock position.

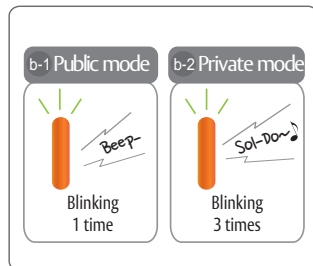
● How to switch between Public Mode & Private Mode

Step 1



- a Touch a Master Card for 3 seconds
- Short beep

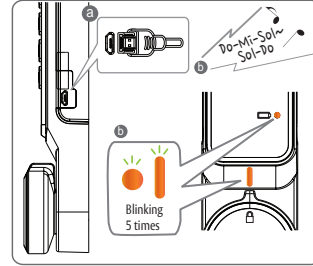
Step 2



- b **Public Mode**
Orange LED blinks 2 times with melody sound "Beep"
- Private Mode**
Orange LED blinks 3 times with melody sound "Sol-Do~"

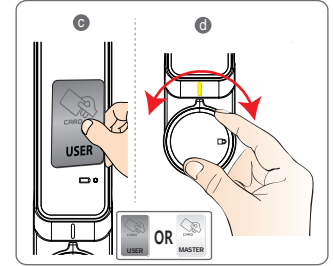
● External Power for Emergency

Step 1



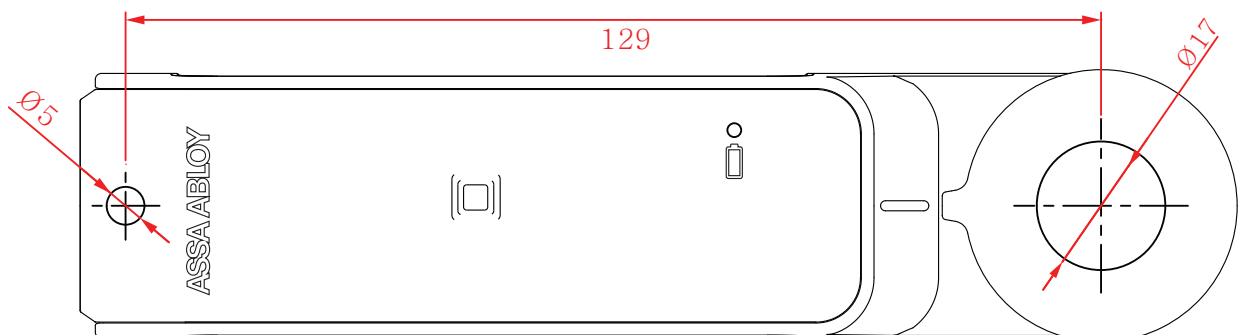
- a Connect standard 5 pin Micro USB cable to the USB Port on the right side of the lock
- b When power is applied, Both LED blinks 5 times with melody sound "Do-Mi-Sol~ Sol-Do~"

Step 2



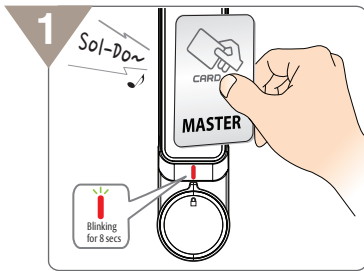
- c Touch a User Card or Master Card to unlock
User card will be deleted after use of the Master card. Need to set the User card again at private mode
- d Open the door and change all 3 batteries

Installation Template



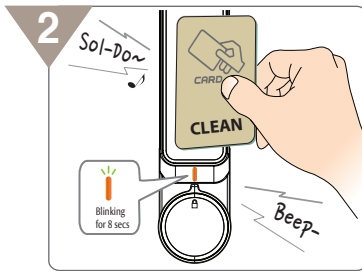
Setting Master, User & Cleaner Card

Step 1: Setting Master Card



- a** Touch a card to register it as a Master
(First touched card will be registered as a Master)
- Red LED blinks for 8 secs with melody sound "Sol-Do~"

Step 2: Setting Cleaner Card

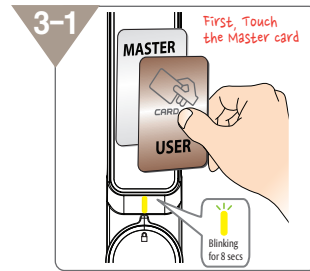


- d** After Master Card setting mode, starts Cleaner Card setting mode
e Touch another card up to 20 in sequence for setting up to 20 Cleaners
f Touch same card twice to stop Cleaner Card setting mode

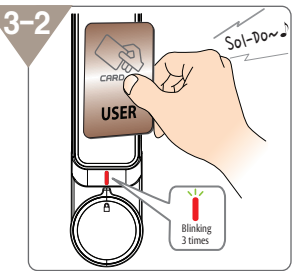
Precautions for Cleaner Card

- ※ Cleaner card can be used at Private mode only
- ※ Be aware of using Cleaner Card. Cleaner card can be used without trace even if the cabinet is in use.
- ※ Touch last Master card three times or wait for 8 seconds at Master card setting mode if no need to set a Cleaner card

Step 3: Setting User Card



- g** Private Mode
g Touch any Master Card (Yellow LED blinks for 8 seconds)
h Touch a card to set the card as a User. (Up to 20 User Cards can be registered.)
i Touch same card twice to stop the User Card setting mode.



- Public Mode**
i Touch a User Card
-Red LED blinks 3 times with melody sound "Sol-Do~"

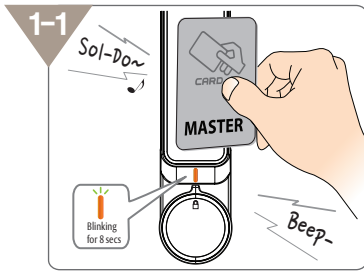
※ FCC statement

This device complies with Part 15 of the FCC Rules. Operation is subject to the following two conditions:

- (1) this device may not cause harmful interference, and
- (2) this device must accept any interference received, including interference that may cause undesired operation.

Caution: Changes or modifications not expressly approved by the party responsible for compliance could void the user's authority to operate the equipment.

- ※ This appliance and its antenna must not be co-located or operation in conjunction with any other antenna or transmitter. This equipment should be installed and operated with minimum distance 20cm between the radiator& your body.

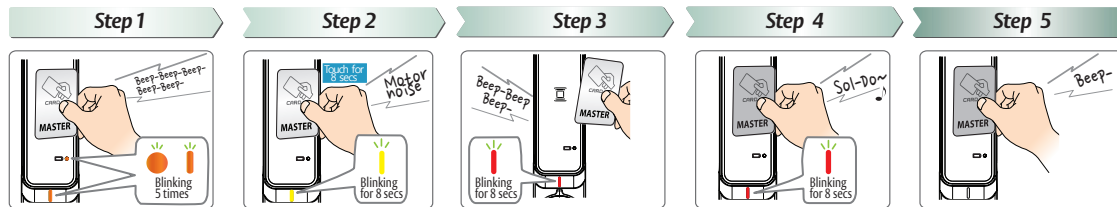


- b** Touch another card up to 20 in sequence for setting up to 20 Masters
c Touch same card twice to stop Master Card setting mode
- Stop Red LED blinking and Orange LED started to blink

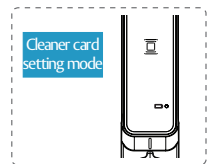
※ After Master Card setting mode, Cleaner Card setting mode will be started automatically

Change the Card

How to change Master Card

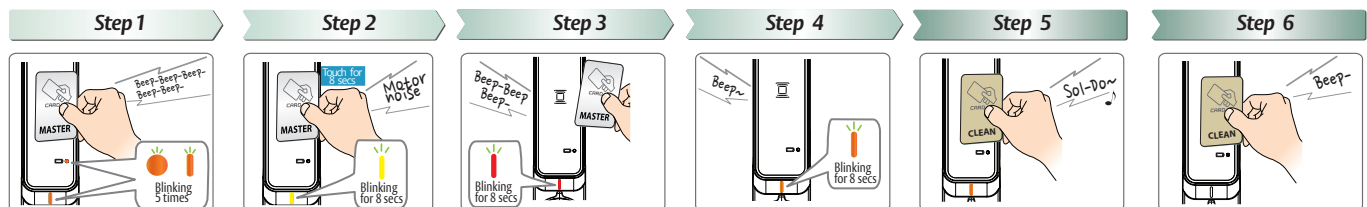


- a** Public Mode Touch any Master Card to delete the User key
Private Mode Skip this step
b Touch a Master Card for 8 seconds.
c Detach the Master Card right after three beeps
- During RED LED blinking for 8 seconds
d Touch another card to set it as a new Master. (Up to 20 Master Cards can be registered)
e Touch the Master Card twice to stop setting of the Master Card
f Completed the Master Card change mode



※ Cleaner Card setting mode will be started after Master Card setting mode.

How to change Cleaner Card



- a** Public Mode Touch any Master Card to delete the User key
Private Mode Skip this step
b Touch any Master Card for 8 seconds
c Detach the Master Card right after three beeps
d Wait for 8 seconds until Red LED blinking
e During Orange LED blinking for 8 seconds after a beep
f Touch another card to set it as a new Cleaner
g Touch last Cleaner Card twice to stop Cleaner Card setting mode
h Completed the Cleaner Card change mode

ASSA ABLOY is the global leader in door opening solutions, dedicated to satisfying end-user needs for security, safety and convenience

ASSA ABLOY Korea Co., Ltd Unilock
5F of REVO bldg, 205-29, Gasandigital 1-Ro, Gueancheon-Gu, SEOUL, 08503
Tel : +82 1644 3526 (200) Web : www.unilock.co.kr

ASSA ABLOY

ASSA ABLOY, the global leader in door opening solutions