

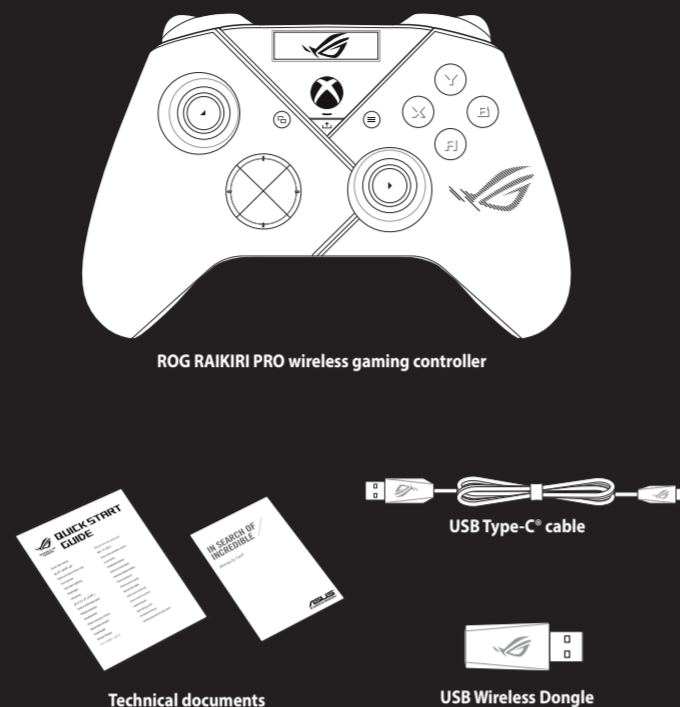


REPUBLIC OF GAMERS
Wireless Gaming Controller

ROG RAIKIRI PRO

Quick Start Guide

Package Contents



ROG RAIKIRI PRO wireless gaming controller

USB Type-C cable

Technical documents

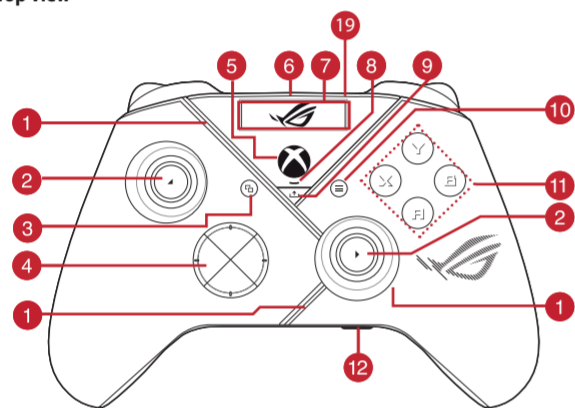
USB Wireless Dongle

E21528
First Edition
March 2023
Copyright © ASUSTeK Computer Inc.
All Rights Reserved

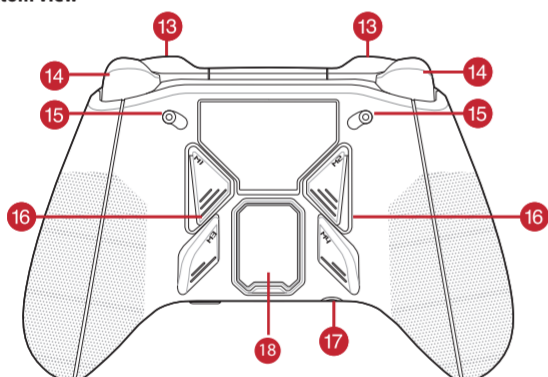


Device features

Top view



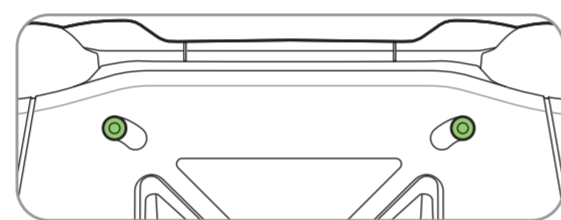
Bottom view



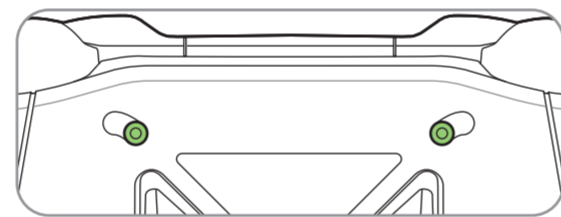
- 1 ROG Aura RGB LED
- 2 Joystick
- 3 View button
- 4 Hybrid D-pad
- 5 Xbox button
- 6 USB Type-C port
- 7 OLED Display
- 8 Controller status indicator
- 9 Share button
- 10 Menu button
- 11 ABXY buttons
- 12 Microphone mute and Pairing combo button
- 13 Bumpers (LB/RB)
- 14 Triggers (LT/RT)
- 15 Step trigger switches
- 16 Multi-functional rear buttons (M1/M2/M3/M4)
- 17 3.5mm headphone jack
- 18 USB Dongle with cover
- 19 OLED control button L/R

Enabling/Disabling Selectable Step Triggers

You can enable the switches to shorten the travel distance of the left and right triggers by sliding the switches outwards. To go back to full trigger mode, simply slide the switches inwards.



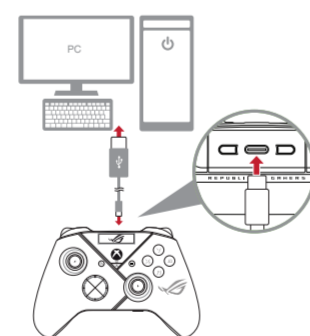
Short trigger mode



Full trigger mode

Getting started

1 Connect to PC



Via wired connection

1. Connect your controller to the PC with the bundled USB Type-C cable.
2. Turn on the OLED on your controller, and then go to **System > PC > USB**.
3. The indicator LED flashes white first, then turns solid white indicating that the controller has been connected to the PC successfully.

Via 2.4Ghz

1. Open the dongle cover on the back of the controller to pick up the bundled USB dongle.
2. Insert the USB dongle into an available USB port on your PC.
3. Press the Xbox button on your controller to power it on.
4. Turn on the OLED on your controller, and then go to **System > PC > RF 2.4Ghz**.
5. The indicator LED flashes white first, then turns solid white indicating that the controller has been connected to the PC successfully.

Via Bluetooth

1. Press the Xbox button on your controller to power it on.
2. Turn on the OLED on your controller, and then go to **System > PC > Bluetooth**. The indicator LED flashes white slowly.
3. Press and hold the pairing button for over 3 seconds until the indicator LED flashes rapidly white.

NOTE: Your controller will automatically pair with the previously paired PC.

4. Find the Bluetooth icon on the task bar on your PC then click **Add a device > ROG RAIKIRI PRO > Finish**.

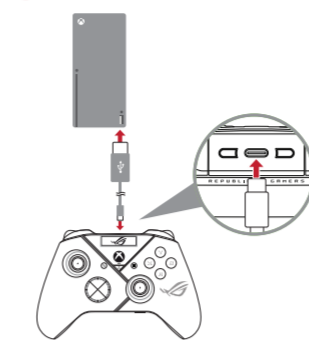
5. The indicator LED flashes white first, then turns solid white indicating that the controller has been connected to the PC successfully.
6. Execute the driver for installation.

NOTE: Download and install the driver from https://rog.asus.com/controllers/rog-raikiri-pro-model/helpdesk_download/.

Controller Status	Indicator color
Powered off, Not connected	Off
Waiting for auto pairing	Blinking white slowly
Waiting for pairing	Blinking white quickly
Connected / Paired	Solid white

NOTE: In wireless connection mode, you can turn off your controller by pressing the Xbox button for over 6 seconds until the indicator is OFF.

2 Connect to Xbox console machine

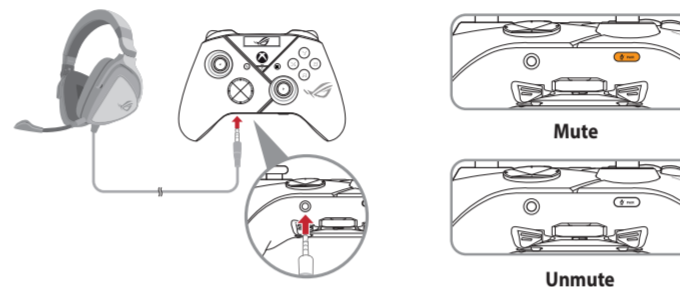


1. Turn on the OLED on your controller, and then go to **System > Xbox**.
2. Connect your controller to the Xbox console machine with the bundled USB Type-C cable.
3. Press the power button on the Xbox console machine to turn it on, then your controller will connect to the Xbox console machine automatically.

3 Customize your controller

1. Download and install the Armoury Crate software from https://www.asus.com/supportonly/Armoury%20Crate/HelpDesk_Download/.
2. Customize your controller using Armoury Crate.

4 (Optional) Connect to headphone



When a 3.5mm headset is connected, the microphone is muted by default. You may unmute it by pressing the mute button.

NOTE: The audio function is supported only on USB mode.

Microphone Status	Indicator color
Mute (Default)	Amber
Unmute	Off

Using OLED

Function	Action
Open the OLED display menu	Press and hold the R button over 2 seconds
Close the OLED display	Press and hold the L button over 2 seconds
Move down on the current menu	Press the R button
Move back to the previous page	Press the L button
Activate the settings and move to the next page	Press and hold the R button over 2 seconds

Menu	Description
Profile	Allows you to select the profile from Armoury Crate
Wallpaper	Allows you to select the wallpaper from Armoury Crate
System	Allows you to select the platform your controller connects to and its connection mode
Status	Displays the Profile name/ battery status / Platform/ Connection mode
Screen off time	Allows you to select the time your OLED screen would be activated (15sec / 30sec/ 1min / 2min / 5min)
Screen brightness	Allows you to select a brightness level for the OLED screen

Safety Guidelines

Keep the device away from liquid, humidity, or moisture. Operate the device only within the specific temperature range of 0°C (32°F) to 40°C (104°F). When the device exceeds the maximum temperature, unplug or switch off the device to let it cool down.

Limitation of Liability

Circumstances may arise where because of a default on ASUS' part or other liability, you are entitled to recover damages from ASUS. In each such instance, regardless of the basis on which you are entitled to claim damages from ASUS, ASUS is liable for no more than damages for bodily injury (including death) and damage to real property and tangible personal property, or any other actual and direct damages resulted from omission or failure of performing legal duties under this Warranty Statement, up to the listed contract price of each product.

ASUS will only be responsible for or indemnify you for loss, damages or claims based in contract, tort or infringement under this Warranty Statement.

This limit also applies to ASUS' suppliers and its reseller. It is the maximum for which ASUS, its suppliers, and your reseller are collectively responsible.

UNDER NO CIRCUMSTANCES IS ASUS LIABLE FOR ANY OF THE FOLLOWING: (1) THIRD-PARTY CLAIMS AGAINST YOU FOR DAMAGES; (2) LOSS OF, OR DAMAGE TO, YOUR RECORDS OR DATA; OR (3) SPECIAL, INCIDENTAL, OR INDIRECT DAMAGES OR FOR ANY ECONOMIC CONSEQUENTIAL DAMAGES (INCLUDING LOST PROFITS OR SAVINGS), EVEN IF ASUS, ITS SUPPLIERS OR YOUR RESELLER IS INFORMED OF THEIR POSSIBILITY.

Notices

Federal Communications Commission Statement

This device complies with Part 15 of the FCC Rules. Operation is subject to the following two conditions:

- This device may not cause harmful interference.
 - This device must accept any interference received including interference that may cause undesired operation.
- This equipment has been tested and found to comply with the limits for a Class B digital device, pursuant to Part 15 of the FCC Rules. These limits are designed to provide reasonable protection against harmful interference in a residential installation. This equipment generates, uses and can radiate radio frequency energy and, if not installed and used in accordance with manufacturer's instructions, may cause harmful interference to radio communications. However, there is no guarantee that interference will not occur in a particular installation. If this equipment does cause harmful interference to radio or television reception, which can be determined by turning the equipment off and on, the user is encouraged to try to correct the interference by one or more of the following measures:
- Reorient or relocate the receiving antenna.
 - Increase the separation between the equipment and receiver.
 - Connect the equipment to an outlet on a circuit different from that to which the receiver is connected.
 - Consult the dealer or an experienced radio/TV technician for help.

CAUTION: The use of shielded cables for connection of the monitor to the graphics card is required to assure compliance with FCC regulations. Changes or modifications to this unit not expressly approved by the party responsible for compliance could void the user's authority to operate this equipment.

This equipment complies with FCC/ISED radiation exposure limits set forth for an uncontrolled environment. End user must follow the specific operating instructions for satisfying RF exposure compliance. This transmitter must not be co-located or operating in conjunction with any other antenna or transmitter.

- The portable device is designed to meet the requirements for exposure to radio waves established by the ISED. These requirements set a SAR limit of 1.6 W/kg averaged over one gram of tissue.

RF exposure warning

The equipment complies with FCC RF exposure limits set forth for an uncontrolled environment. The equipment must not be co-located or operating in conjunction with any other antenna or transmitter.

Radio Frequency (RF) Exposure Information

The radiated output power of the Wireless Device is below the Innovation, Science and Economic Development Canada (ISED) radio frequency exposure limits. The Wireless Device should be used in such a manner such that the potential for human contact during normal operation is minimized.

This device has also been evaluated and shown compliant with the ISED RF Exposure limits under portable exposure conditions. (antennas are less than 20 cm of a person's body).

Lithium-Ion Battery Warning

CAUTION: Danger of explosion if battery is incorrectly replaced. Replace only with the same or equivalent type recommended by the manufacturer. Dispose of used batteries according to the manufacturer's instructions.

Proper disposal

DO NOT throw the device in municipal waste. This product has been designed to enable proper reuse of parts and recycling. The symbol of the crossed out wheeled bin indicates that the product (electrical, electronic equipment and mercury-containing button cell battery) should not be placed in municipal waste. Check local regulations for disposal of electronic products.

DO NOT throw the device in fire. **DO NOT** short circuit the contacts. **DO NOT** disassemble the device.

ASUS Recycling/Takeback Services

ASUS recycling and takeback programs come from our commitment to the highest standards for protecting our environment. We believe in providing solutions for you to be able to responsibly recycle our products, batteries, other components as well as the packaging materials. Please go to <http://csr.asus.com/english/Takeback.htm> for detailed recycling information in different regions.

REACH

Complying with the REACH (Registration, Evaluation, Authorisation, and Restriction of Chemicals) regulatory framework, we published the chemical substances in our products at ASUS REACH website at <http://csr.asus.com/english/REACH.htm>.

ASUS contact information

ASUSTeK COMPUTER INC.

Address 1F., No. 15, Lide Rd., Beitou Dist., Taipei City 112
Telephone +886-2-2894-3447
Fax +886-2-2890-7798
Web site <https://www.asus.com>

Technical Support

Telephone +86-21-38429911
Online support <https://qr.asus.com/techserv>

ASUS COMPUTER INTERNATIONAL (America)

Address 48720 Kato Rd., Fremont, CA 94538, USA
Telephone +1-510-739-3777
Fax +1-510-608-4555
Web site <https://www.asus.com/us/>

Technical Support

Support fax +1-812-284-0883
Telephone +1-812-282-2787
Online support <https://qr.asus.com/techserv>

Manufacturer	ASUSTeK Computer Inc.	
	Tel:	+886-2-2894-3447
Address:	1F., No. 15, Lide Rd., Beitou Dist., Taipei City 112	