

# YÖK

## DUAL WIRELESS HEADPHONE/CHAT ADAPTER

M/N: LBI-962

### USER MANUAL

**INFORMATION**  
Please make sure that the Nintendo Switch console is updated with the latest system software version. We recommend version 6.0.0 or above.

### 1. Package Contents

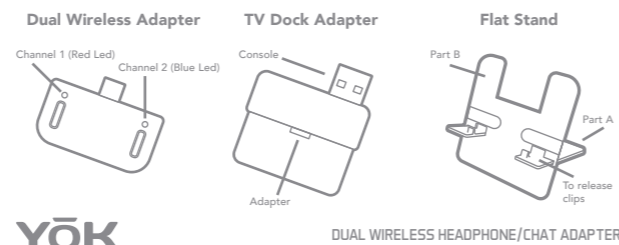
Dual Wireless BT Adapter	x1
TV Dock Adapter	x1
Flat Stand (2 Piece)	x1

### 2. Product Features

Transmit audio wirelessly from the Nintendo Switch to any compatible BT headset for wire-free gaming. Enjoy playing with friends? Then pair a second headset so they can hear the action too. This adapter also features a built-in microphone function.

- Connects to the USB-C port of the console, transmitting clear digital audio to your favourite BT headsets
- TV Dock Adapter allows connection to the TV Dock for wireless audio when big screen gaming
- Built-in Type-C pass through port supports playing and charging
- 10 feet Cable Length
- Included flat stand perfect for table top mode gaming
- LED indicators show pairing/connection status
- No batteries required, powered by the console

### 3. Product Instruction



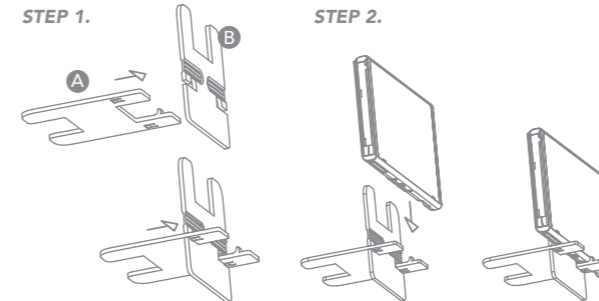
YÖK

DUAL WIRELESS HEADPHONE/CHAT ADAPTER

### 4. Flat Stand

- Carefully push part A through part B until the 2 parts click together.
- Place the console on the stand, the small raised clips will stop the console slipping forward.
- The grill on Part B is designed to line up with the fans on the back of the console.
- To take apart, gently squeeze the small clips that lock the stand in place.

Please do not pull the stand apart by force as the clips are fragile.



### 5. First Time Setup

#### Power On:

Connecting to Switch console (BT Adapter and BT headset are not paired).

- Insert the adapter into the USB-C port of the Switch console ( Refer to Figure 1); Or if playing using the TV Dock then:
  - Plug in the BT Adapter in to the TV Dock Adapter. Plug the TV adaptor to the TV dock (refer to Figure 2).

YÖK

DUAL WIRELESS HEADPHONE/CHAT ADAPTER

Figure 1.

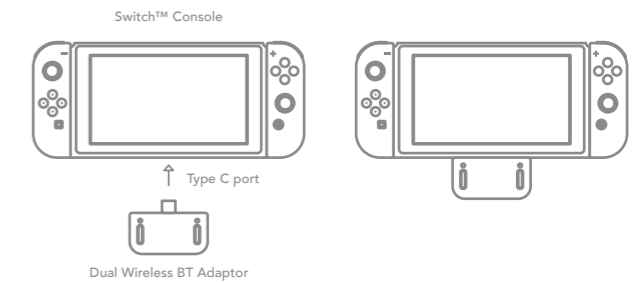
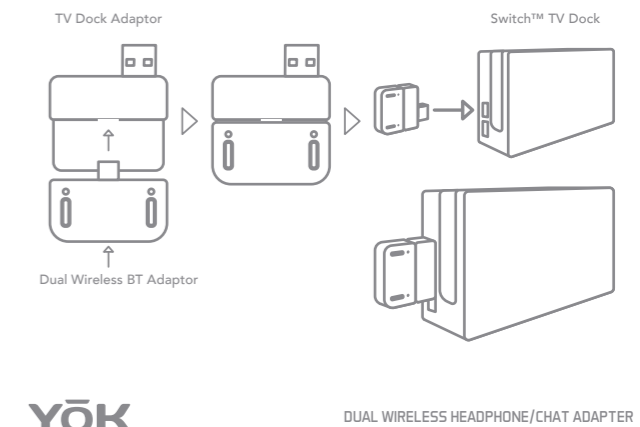


Figure 2.



YÖK

DUAL WIRELESS HEADPHONE/CHAT ADAPTER

**IMPORTANT**  
Please follow the instructions of your BT Headset for any specific pairing instructions. Some Ear Pod style products require the pods to be in the case when pairing. This type of product will also include auto shut off functions, these could result in disconnections of the BT Adapter \*\*

#### Pairing:

**A.** Turn on your BT headset so that it is in pairing mode. Press the Left Button(1) of the adapter for about 5 seconds until the RED LED flashes quickly. The adapter is now also in pairing mode.

**B.** If pairing is successful, the RED LED will stop flashing and remain ON (Solid Red). The BT Adapter is successfully connected to the BT headset.

**C.** To pair Channel 2 (BLUE LED). Turn on the 2nd BT headset and put it in pairing mode. Press the Right Button(2) of the adapter for about 5 seconds, the BLUE LED flashes quickly. The adapter is now in pairing mode.

**D.** If pairing is successful, the BLUE LED will stop flashing and remain ON (Solid Blue). The BT Adapter is successfully connected to the BT headset.

**IMPORTANT**  
The audio output volume will reduce slightly with 2 devices connected. Once 1 device is disconnected the audio will return to normal

#### PLEASE NOTE:

- During the pairing process between the BT Adapter and headset, the LED light corresponding to the BT channel flashes rapidly. If it is not connected after approximately 120 seconds, it will turn off and stop searching.

YÖK

DUAL WIRELESS HEADPHONE/CHAT ADAPTER

- When a paired headset is turned off, the corresponding channel on the BT Adapter will also be turned off and disconnected. The corresponding channel's LED will turn off.
- To disconnect a headset: Press the channel button on the BT Adapter for approximately 3 seconds, the corresponding BT channel will be turned off and the LED will also turn off.

#### Re-Connecting:

BT Adapter and headset have previously been paired

**A.** Plug the BT Adapter in to the Switch console. the LED corresponding to the paired channels will start to flash slowly.

**B.** Turn on the previously paired headset and re-connect. After the connection is successful, the LED will change from slowly flashing to a solid colour (depending on the previously paired channel).

**C.** If the device does not re-connect after 60 seconds, the led light will turn off and the BT Adapter will go into sleep mode. We would then recommend pairing as a new device.

### 6. Microphone Function

**IMPORTANT**  
For the chat function to work

- THE GAME BEING PLAYED MUST SUPPORT CHAT FUNCTION
- PLEASE CONNECT THE BT ADAPTER TO THE CONSOLE AND PAIR THE HEADSET BEFORE OPENING THE GAME YOU WISH TO PLAY. NOT DOING THIS WILL RESULT IN THE CHAT FUNCTION NOT WORKING PROPERLY
- WHEN USING THE ONLINE CHAT FUNCTION IN A GAME WITH 2 HEADSETS CONNECTED, THE ONLINE PLAYER WILL HEAR CHAT FROM BOTH CONNECTED DEVICES ON THE LOCAL CONSOLE, HOWEVER THE LOCAL PLAYERS WILL NOT HEAR EACH OTHERS CHAT THROUGH THE BT ADAPTER.

The BT Adapter also has a microphone (chat) function which can be used at the same time as the audio function.

YÖK

DUAL WIRELESS HEADPHONE/CHAT ADAPTER

- When a device (headset etc.) is connected to the BT Adapter and you are using both the audio and chat functions, the audio quality will be affected. Once the chat function is stopped. The sound quality of the audio device will return to normal.

### 7. Charging Function

This product does not require a battery. However the BT Adapter does include a pass-through charging port for the console. When the Switch console battery is low, you can connect the external power supply (supplied with console) to the pass-through port to charge the console. During the charging process, the BT function of the BT Adapter is not affected.

### 8. Troubleshooting

#### BT Adapter doesn't seem to work

- Please make sure that the Nintendo Switch console is updated with the latest system software version. We recommend version 6.0.0 or above.

#### I cannot pair my ear buds/ ear pods to the BT Adapter

- Please check the instructions for your BT device to check for any specific pairing instructions. Some devices include a case so must be paired using this.

#### My ear buds/ear pods keep disconnecting

- Some ear bud/ear pod style products include an auto shut off function. If the device does turn off then connection to the BT Adapter will be lost. Please re-connect.

#### Can I use any gaming headset with the BT Adapter?

- This adapter only works with BT audio devices like headphones or ear buds. Most standard gaming headsets use 2.4Ghz wireless to connect to consoles. These ARE NOT compatible.

YÖK

DUAL WIRELESS HEADPHONE/CHAT ADAPTER

#### Chat is not working in my game

- Please check that the game being played supports chat function
- For chat to work in compatible games the headphones/headset must be paired to the BT Adapter BEFORE opening the game programme. If the game is already loaded you will hear the game sound but chat WILL NOT WORK

#### I sometimes get clicks in the sound

- If the console battery level is low then you may experience some breaks in audio. Please make sure your audio device and the console are fully charged.

Still have questions? Then please contact us on [service@ebimail.com](mailto:service@ebimail.com)



### PRECAUTION AND MAINTENANCE

- Store in a cool, dry & dust free area.
- Do not store in areas of extreme low temperatures (0°C) or high (40°C).
- Avoid direct sunlight and heat sources.
- Do not allow the product to get wet or dirty; doing so may cause damage.
- Do not clean with benzene, paint thinner, acetone, alcohol or other solvents.
- Do not take the product apart; doing so will void your warranty and may cause electrical shock or damage to internal components.
- Please help to conserve the environment by recycling the cardboard packaging of this product.
- This product should NOT be disposed of in normal household waste it should be disposed of separately. Please take it to an electrical waste collection point.

YÖK

DUAL WIRELESS HEADPHONE/CHAT ADAPTER

#### FCC COMPLIANCE STATEMENT:

This device complies with part 15 of the FCC Rules.

Operation is subject to the following two conditions:

- (1) This device may not cause harmful interference, and
- (2) this device must accept any interference received, including interference that may cause undesired operation.

Note: This equipment has been tested and found to comply with the limits for a Class B digital device, pursuant to Part 15 of the FCC Rules. These limits are designed to provide reasonable protection against harmful interference in a residential installation. This equipment generates, uses and can radiate radio frequency energy and, if not installed and used in accordance with the instructions, may cause harmful interference to radio communications.

However, there is no guarantee that interference will not occur in a particular installation. If this equipment does cause harmful interference to radio or television reception, which can be determined by turning the equipment off and on, the user is encouraged to try to correct the interference by one or more of the following measures:

- Reorient or relocate the receiving antenna.

- Increase the separation between the equipment and receiver.

- Connect the equipment into an outlet on a circuit different from that to which the receiver is connected.

- Consult the dealer or an experienced radio/TV technician for help.

Warning: Changes or modifications to this unit not expressly approved by the part responsible for compliance could void the user's authority to operate the equipment.

#### FCC Radiation Exposure Statement

The device has been evaluated to meet general RF exposure requirement.

The device can be used in portable exposure condition without restriction.