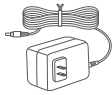


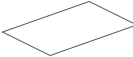
## PACKAGE CONTENTS



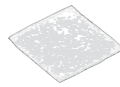
Power Adapter



Quick Start Guide



Warranty Card



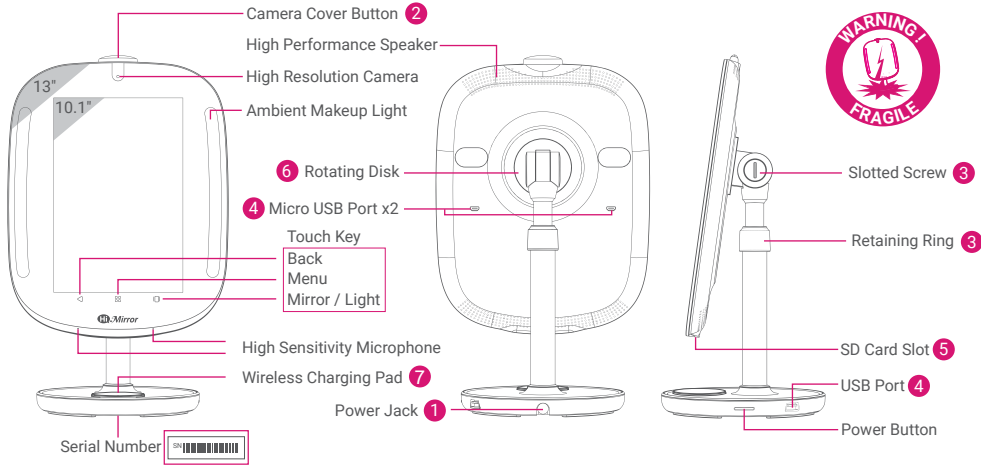
Cleaning Cloth



Stylus

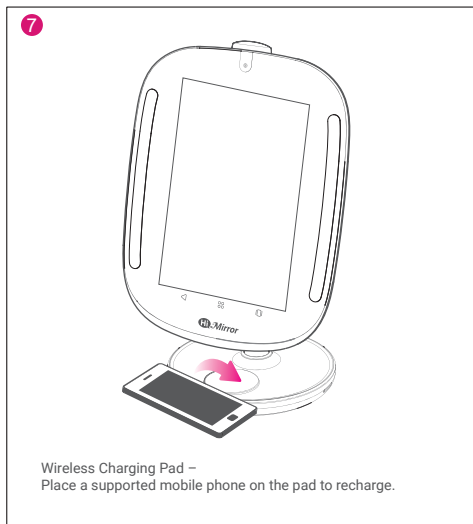
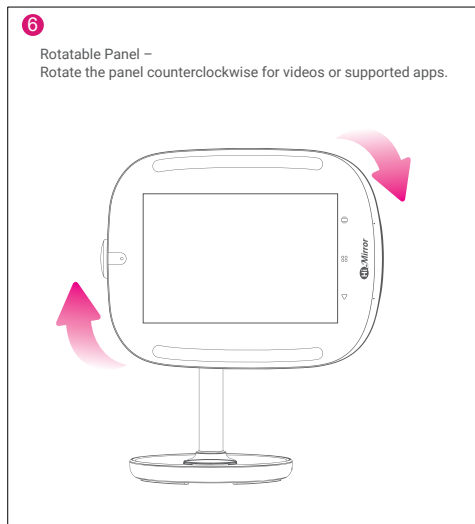
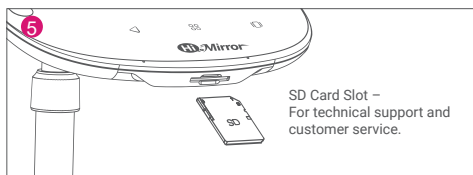
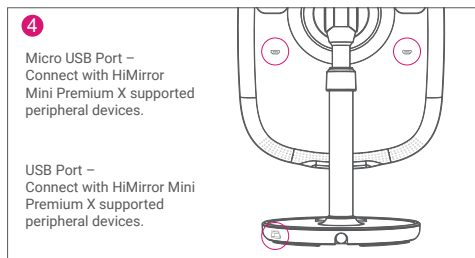
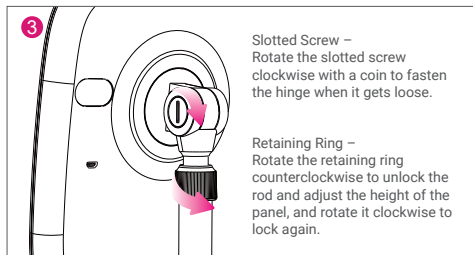
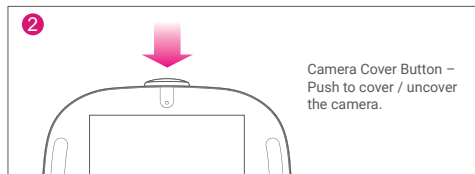
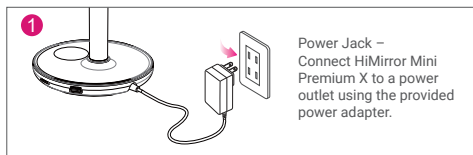
HiMirror Mini Premium X

## OVERVIEW



• 13" mirror size with 10.1" TFT LCD touch panel (Rotatable)

Touch Key	Functions
◀ Back	Back to previous page
☰ Menu	Bring up the menu
☑ Mirror / Light	Switch between Mirror mode and ambient makeup light



## BEFORE YOU START

### Note:

1. Children under the age 13 are not permitted to create a HiMirror account.
2. Please ensure HiMirror Mini Premium X is placed on a flat and even surface.

### HiMirror Mini Premium X must be within range of your WiFi network

You must have a WiFi network available and have your HiMirror Mini Premium X installed within its range.



## GETTING STARTED

1. Connect HiMirror Mini Premium X to a power outlet using the power adapter.\*
2. Push the power button to turn on HiMirror Mini Premium X.
3. Push open the camera cover.
4. Follow the on-screen instructions to complete setup.

\***Note:** HiMirror Mini Premium X must be plugged into a power outlet at all times.

## OPTIMAL ENVIRONMENT CONDITIONS

### Light Source

For best results, make sure that the light sources around your HiMirror Mini Premium X are even and your face is not partially shadowed. Please refer to the following instructions when the light source is not adequate for HiMirror Mini Premium X.

- A. Strong backlight, such as a large window.  
Suggestion: Close the blinds or curtains.



- B. Uneven indoor lighting, such as a light source shining on one side of your face.  
Suggestion: Adjust the light's direction, or turn the light off.



- C. Multiple light sources.  
Suggestion: Leave only the light source in front of you and turn the other lights off.



### Temperature / Humidity

Operation: 41°~95°F(5°~35°C); 30~80% RH  
Storage & Transportation: -4°~140°F(-20°~60°C); 0~95% RH

### Power Consumption

Power Input: 100-240V~50/60Hz, 1.0A  
Power Adapter: 12V, 36W

## MEMO

