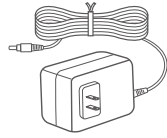


PACKAGE CONTENTS



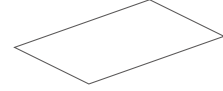
HiMirror Mini



Power Adapter

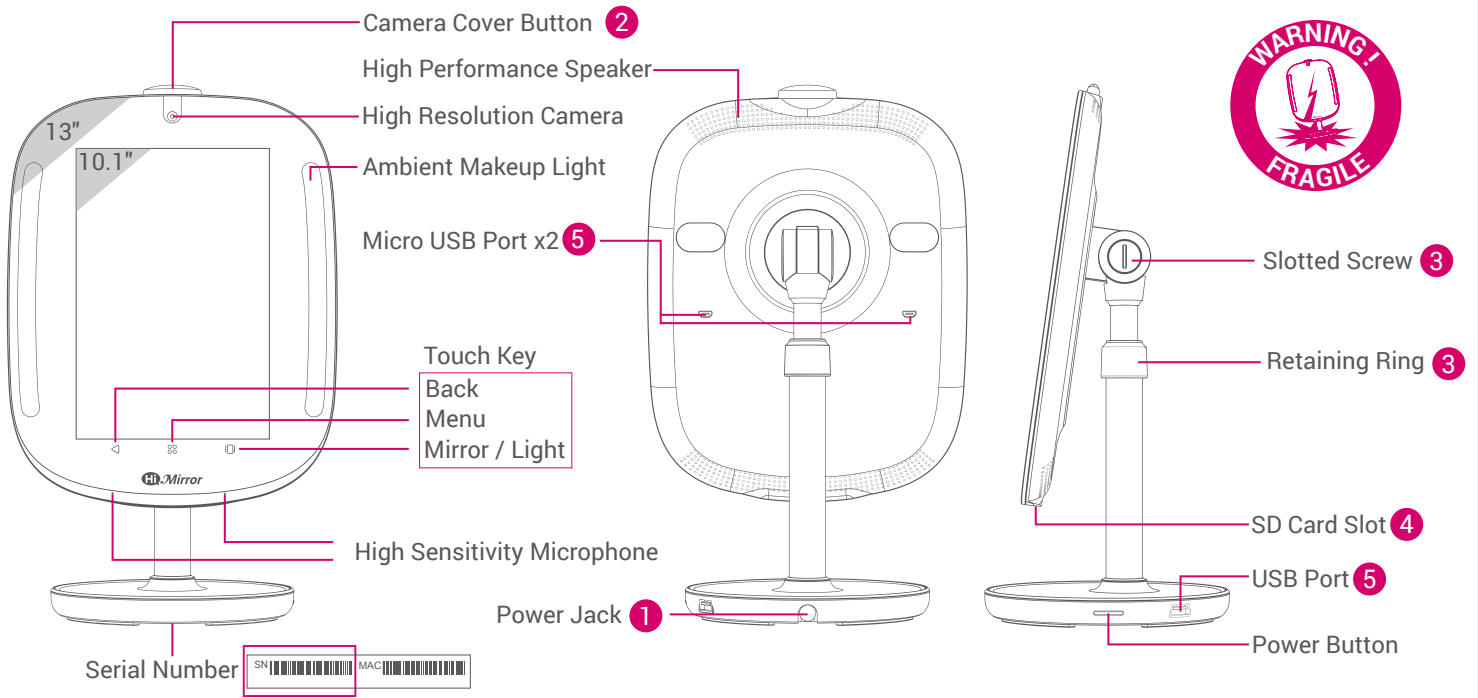


Quick Start Guide



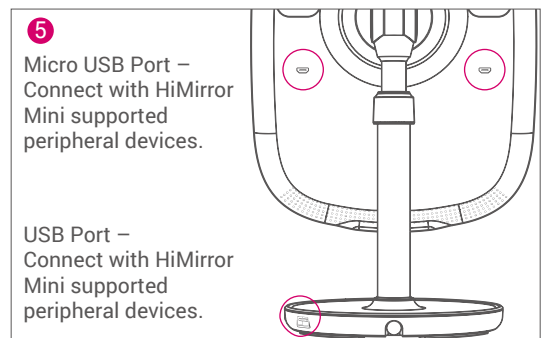
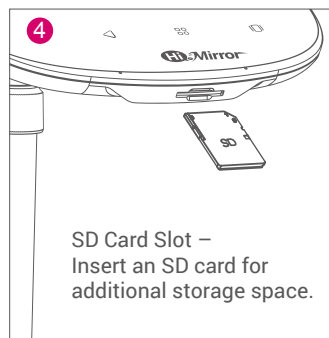
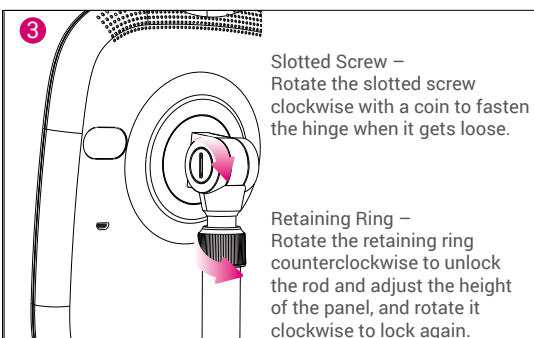
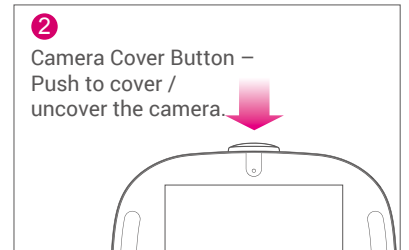
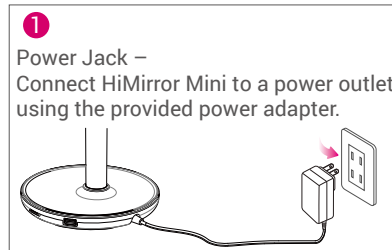
Warranty Card

OVERVIEW



• 13" mirror size with 10.1" TFT LCD touch panel

Touch Key	Functions
	Back
	Menu
	Mirror / Light



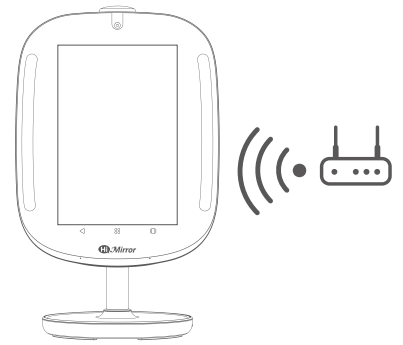
BEFORE YOU START

Note:

1. Children under the age of 13 are not permitted to create a HiMirror account.
2. Please ensure HiMirror Mini is placed on a flat and even surface.

HiMirror Mini must be within range of your WiFi network

You must have a WiFi network available and have your HiMirror Mini installed within its range.



GETTING STARTED

1. Connect HiMirror Mini to a power outlet using the power adapter.*
2. Push and hold the power button for at least 3 sec. to turn on HiMirror Mini.
3. Push to open the camera cover.
4. Follow the on-screen instructions to complete setup.

***Note:** HiMirror Mini must be plugged into a power outlet at all times.

OPTIMAL ENVIRONMENT CONDITIONS

Light Source

For best results, make sure that the light sources around your HiMirror Mini are even and your face is not partially shadowed. Please refer to the following instructions when the light source is not adequate for HiMirror Mini.

- A. Strong backlight, such as a large window.
Suggestion: Close the blinds or curtains.



- B. Uneven indoor lighting, such as a light source shining on one side of your face.
Suggestion: Adjust the light's direction, or turn the light off.



- C. Multiple light sources.
Suggestion: Leave only the light source in front of you and turn the other lights off.



Temperature / Humidity

Operation: 41°~95°F(5°~35°C); 30~80% RH
Storage & Transportation: -4°~140°F(-20°~60°C); 0~95% RH

Power Consumption

Power Input: 100-240V~50/60Hz, 1.0A
Power Adapter: 12V, 36W



Address: 20191 Windrow Dr., Suite B Lake Forest, CA 92630, USA
Toll-free Number: +1-855-999-3348

