


# FCC SAR TEST REPORT

<b>KOSTEC CO., Ltd.</b> 28(175-20, Annyeong-dong) 406-gil sejaro, Hwaseong-si, Gyeonggi-do, Korea Tel:031-222-4251, Fax:031-222-4252	Report No: KST-FCS-150001(3)	 <b>KOSTEC Co., Ltd.</b> <a href="http://www.kostec.org">http://www.kostec.org</a>
---	------------------------------	---

**1. Applicant**

- Name : SamYoungCeletra. Co.,Ltd.
- Address : 110, Geomdan-ro, Seo-gu, Incheon, South Korea

**2. Test Item**

- Product Name: UHF Transceiver
- Model Name : SY4050-LM
- Brand Name: -

**3. Manufacturer**

- Name : SamYoungCeletra. Co.,Ltd.
- Address : 110, Geomdan-ro, Seo-gu, Incheon, South Korea



**4. Date of Test :** 2015. 09. 30.

**5. Test Method Used :**  
 FCC 47 CFR Parts 1 & 2  
 KDB 447498 D01 v06  
 KDB 865664 D01 v01r04  
 KDB 643646 D01 v01r03

**6. Test Result :** Compliance

**7. Note:** -

The results shown in this test report refer only to the sample(s) tested unless otherwise stated.

Affirmation	Tested by Name : Lee, Mi-Young  (Signature)	Technical Manager Name : Park, Gyeong-Hyeon  (Signature)
-------------	---	--

**2016. 09. 29.**

**KOSTEC Co., Ltd.**

## Table of Contents

<b>1. Statement of Compliance</b> .....	3
<b>1-1 Test Method List</b> .....	3
<b>2. Administration Data</b> .....	4
<b>2.1 Test Laboratory</b> .....	4
<b>2.2 Location</b> .....	4
<b>2.3 Applicant</b> .....	4
<b>2.4 Manufacturer</b> .....	4
<b>2.5 Application Details</b> .....	4
<b>3. GENERAL INFORMATION</b> .....	6
<b>3.1 Description of DUT</b> .....	6
<b>3.2 Photographs of EUT</b> .....	8
<b>3.3 Accessories</b> .....	11
<b>3.4 Test Condition</b> .....	13
<b>3.5 Requirements for compliance testing defined by FCC</b> .....	13
<b>4. Specific Absorption Rate (SAR)</b> .....	14
<b>4.1 Introduction</b> .....	14
<b>4.2 SAR Definition</b> .....	14
<b>4.3 SAR Measurement Procedure</b> .....	14
<b>5. SAR Measurement System</b> .....	15
<b>5.1 E-field Probe</b> .....	16
<b>5.2 Device Positioner</b> .....	17
<b>5.3 6 Axis Articulated Robot ALS-F3</b> .....	18
<b>5.4 SAM Phantoms</b> .....	19
<b>5.5 Flat Phantoms</b> .....	20
<b>5.6 DAQ-PAQ (Analog to Digital Electronics)</b> .....	21
<b>5.7 Validation Dipoles</b> .....	22
<b>5.8 Test Equipment List</b> .....	23
<b>6. Measurement Results</b> .....	24
<b>6.1 Tissue Simulating Liquids</b> .....	24
<b>6.2 System Verification</b> .....	27
<b>6.3 DUT Testing Position</b> .....	29
<b>6.4 SAR measurement procedure</b> .....	29
<b>6.5 SAR Exposure Limits</b> .....	29
<b>6.6 SAR test result</b> .....	30
<b>7. Uncertainty Assessment</b> .....	31
<b>Appendix A : Plot of measured tissue</b> .....	32
<b>Appendix B : Plot of system verification test</b> .....	35
<b>Appendix C : Plot of SAR test</b> .....	43
<b>Appendix D: DUT setup photos</b> .....	60
<b>Appendix E: System Certificate &amp; calibration</b> .....	61

## 1. Statement of Compliance

The maximum results of Specific Absorption Rate (SAR) found during testing for DUT are as follows.

### Body Worn Configuration

Mode	Freq.	Position	Measured 1 g SAR (W/Kg)	50 % Duty cycle (W/Kg)	Scaled 1 g SAR (W/Kg)	Note
Analog	440.0000	Body-worn	3.302	1.651	1.673	Ant A (HW-423W-CT405)
Digital	406.1125	Body-worn	6.272	3.136	<b>3.176*</b>	
Analog	440.0000	Body-worn	4.077	2.039	2.065	Ant B (HW-423H-CT405)
Digital	406.1125	Body-worn	4.689	2.345	<b>2.375</b>	

### Head Configuration

Mode	Freq.	Position	Measured 1 g SAR (W/Kg)	50 % Duty cycle (W/Kg)	Scaled 1 g SAR (W/Kg)	Note
Analog	440.0000	Face-up	2.942	1.471	1.490	Ant A (HW-423W-CT405)
Digital	406.1125	Face-up	5.445	2.723	<b>2.758</b>	
Analog	440.0000	Face-up	3.417	1.709	1.731	Ant B (HW-423H-CT405)
Digital	406.1125	Face-up	5.982	2.991	<b>3.030</b>	

This wireless device has been shown to be capable of compliance for localized specific absorption rate (SAR) for Occupational /Controlled Exposure limits specified in ANSI/IEEE Standards and has been tested in accordance with the measurement procedures specified in IEEE 1528-2013 and RF exposure KDB procedures.

### 1-1 Test Method List

447498 D01 General RF Exposure Guidance v06

865664 D01 SAR Measurement 100 MHz to 6 GHz v01r04

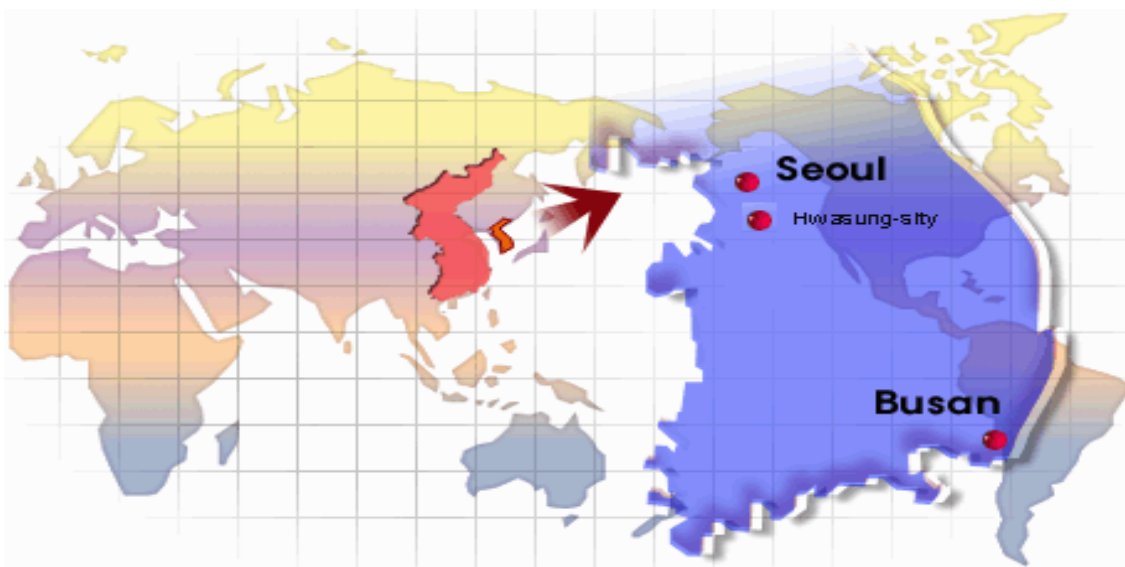
643646 D01 SAR Test for PTT Radios v01r03

## 2. Administration Data

### 2.1 Test Laboratory

KOSTEC Co., Ltd.  
28(175-20,Annyeong-dong)406-gil sejaro, Hwaseong-si Gyeonggi-do, Korea

### 2.2 Location



### 2.3 Applicant

SamYoungCeletra. Co.,Ltd.  
110, Geomdan-ro, Seo-gu, Incheon, South Korea

### 2.4 Manufacturer

SamYoungCeletra. Co.,Ltd.  
110, Geomdan-ro, Seo-gu, Incheon, South Korea

### 2.5 Application Details

Date of Receipt of application : 2015. 08. 19  
Date of Start during the test : 2015. 09. 30  
Date of End during the test : 2015. 09. 30

## Revision History of test report

Rev.	Revisions	Effect page	Reviewed	Date
-	Initial issue	All	Gyeong Hyeon, Park	2015. 10. 01
1	Retest for low frequency	All	Gyeong Hyeon, Park	2015. 11. 03
2	Replace test freq for analog	All	Gyeong Hyeon, Park	2015. 11. 06
3	Add the unit for deviation	25 - 26	Gyeong Hyeon, Park	2015. 11. 09
4	Revise applicant's name according to request for applicant	All	Gyeong Hyeon, Park	2016. 09. 12
5	Revise KDB version	All	Gyeong Hyeon, Park	2016. 09. 26
6	Apply 50 % duty factor for digital	30	Gyeong Hyeon, Park	2016. 09. 29

### 3. GENERAL INFORMATION

#### 3.1 Description of DUT

<b>DUT Type</b>	Portable devices
<b>Device Category</b>	Occupational/Controlled Exposure
<b>Brand Name</b>	-
<b>Model Name</b>	SY4050-LM
<b>Modulation Type</b>	FM and 4FSK
<b>Frequency Range</b>	406.1125 MHz - 440.0000 MHz
<b>Operating mode</b>	Face Up and Body-worn
<b>Body-Worn accessories</b>	Belt Clip
<b>Audio accessories</b>	Ear-mic set(WEP-100)
<b>Antenna Specification</b>	Antenna 1(Main): HW-423W-CT405 Whip antenna, 0 dBi Antenna 2(Optional): HW-423H-CT405 Helical Antenna, -2 dBi
<b>Power Source</b>	Li-ion battery / 7.4 VDC nominal / 2.600 mAh (Only standard is supplied)
<b>Max. Output power(conducted)</b>	Analog : 36.60 dBm Digital : 36.69 dBm
<b>Max.SAR(1 g)</b>	3.176 W/kg
<b>Remark</b>	- The above DUT's information was declared by manufacturer. Please refer to the specifications or user manual for more detailed description.
<b>FCC ID</b>	2AJRJ-SY4050-LM

### 3.1.1 The DUT conducted power measurements

Modulation	Frequency [MHz]	Power Level	Conducted output Power [dBm]	Conducted output Power [W]	Target power	Max. tune-up tolerance limit	Scaling Factor
Analog	406.1125	Low	32.83	2.25	33.01	33.80	1.25
	415.0000	Low	33.23	2.10	33.01	33.80	1.14
	430.0000	Low	32.75	1.88	33.01	33.80	1.27
	440.0000	Low	32.50	1.78	33.01	33.80	1.35
	406.1125	High	36.25	4.47	36.99	37.80	1.43
	415.0000	High	36.40	4.37	36.99	37.80	1.38
	430.0000	High	36.58	4.55	36.99	37.80	1.32
	<b>440.0000</b>	<b>High</b>	<b>36.60</b>	<b>4.57</b>	36.99	37.80	1.32
Digital	406.1125	Low	32.71	2.14	33.01	33.80	1.29
	415.0000	Low	33.00	2.00	33.01	33.80	1.20
	430.0000	Low	32.59	1.82	33.01	33.80	1.32
	440.0000	Low	32.34	1.71	33.01	33.80	1.40
	<b>406.1125</b>	<b>High</b>	<b>36.69</b>	<b>4.65</b>	36.99	37.80	1.29
	415.0000	High	36.67	4.65	36.99	37.80	1.30
	430.0000	High	36.25	4.22	36.99	37.80	1.43
	440.0000	High	36.32	4.29	36.99	37.80	1.41

**Note:**

- 1) Conducted output power;  
The maximum powers are marks in bold.
- 2) Scaling Factor = tune-up limit power (mW) / EUT RF power (mW)

### 3.1.2 Tested Channel calculation

No	Frequency [MHz]	Channel
1	406.1125	Low
2	415.0000	Mid
3	430.0000	Mid
4	440.0000	High

**Note:**

Per KDB 447498 D01 v06 page 7 section 4.1 6), the number of channels required to be tested is as follows:

$$F_{\text{high}} = 440 \text{ MHz}$$

$$F_c = 423 \text{ MHz}$$

$$F_{\text{low}} = 406.1 \text{ MHz}$$

$$N_c = \text{Round} \left\{ \left[ \frac{100(f_{\text{high}} - f_{\text{low}})}{f_c} \right]^{0.5} \times \left( \frac{f_c}{100} \right)^{0.2} \right\}$$

$$= \text{Round} \left\{ \left[ \frac{100(440 - 406.1)}{423} \right]^{0.5} \times \left( \frac{423}{100} \right)^{0.2} \right\}$$

$$= 3$$

Therefore, for the frequency band from 406.1 MHz to 440 MHz, 3 channels or above are required for SAR test.

### 3.2 Photographs of EUT

Front



Rear





Top



Bottom



Left



Right



### 3.3 Accessories

Antenna (HW-423W-CT405)



Antenna (HW-423H-CT405)



Belt Clip



Ear-mic set(WEP-100)



### **3.4 Test Condition**

#### **3.4.1 Ambient Condition**

- Ambient temperature : (21 - 22) °C • Relative Humidity : ( 42 - 45 ) % R.H.

#### **3.4.2 Test Configuration**

The EUT was tested in the face position with the front of the device 25 mm away from the flat phantom and the body position with the belt clip in contact with the flat phantom. The audio accessory (WEP-100) was used for all body measurements. For each of the tests conducted, the device was set to continuously transmit at a maximum output power on the channel specified in the test data. The SAR for analog mode was scaled to 50% duty cycle (as this is the maximum duty cycle of the device) per KDB 643646 D01 v01r03. All test reductions were reduced based on the reductions in KDB 643646 D01 v01r02.

For digital mode testing, press the PTT button, engineering firmware installed on the EUT can provide continuous transmitting RF signal (100% duty) despite EUT use TDMA mode. So duty factor 1 was applied to this project.

### **3.5 Requirements for compliance testing defined by FCC**

The US Federal Communications Commission has released the report and order "Guidelines for Evaluating the Environmental Effects of RF Radiation", ET Docket No. 93-62 in August 1996 [1]. The order requires routine SAR evaluation prior to equipment authorization of portable transmitter devices, including portable telephones.

For consumer products, the applicable limit is 1.6 mW/g for an uncontrolled environment and 8.0 mW/g for an occupational/controlled environment as recommended by the ANSI/IEEE standard C95.1-1992 [6].

According to the KDB publications by the FCC, the device should be evaluated at maximum output power (radiated from the antenna) under "worst-case" conditions for normal or intended use, incorporating normal antenna operating positions, device peak performance frequencies and positions for maximum RF energy coupling.

## 4. Specific Absorption Rate (SAR)

### 4.1 Introduction

SAR is related to the rate at which energy is absorbed per unit mass in an object exposed to a radio field. The SAR distribution in a biological body is complicated and is usually carried out by experimental techniques or numerical modeling. The standard recommends limits for two tiers of groups, occupational/controlled and general population/uncontrolled, based on a person's awareness and ability to exercise control over his or her exposure. In general, occupational/controlled exposure limits are higher than the limits for general population/uncontrolled.

### 4.2 SAR Definition

The SAR definition is the time derivative (rate) of the incremental energy (dW) absorbed by (dissipated in) an incremental mass (Dm) contained in a volume element (dv) of a given density ( $\rho$ ). The equation description is as below:

$$SAR = \frac{d}{dt} \left( \frac{dW}{dm} \right) = \frac{d}{dt} \left( \frac{dW}{\rho dv} \right)$$

SAR is expressed in units of Watts per kilogram (W/kg)

SAR measurement can be either related to the temperature elevation in tissue by

$$SAR = c \left( \frac{\delta T}{\delta t} \right)$$

Where: C is the specific heat capacity,  $\delta T$  is the temperature rise and  $\delta t$  is the exposure duration, or related to the electrical field in the tissue by

$$SAR = \frac{\sigma |E|^2}{\rho}$$

Where:  $\sigma$  is the conductivity of the tissue,  $\rho$  is the mass density of the tissue and E is the RMS electrical field strength.

However, for evaluating SAR of low power transmitter, electrical field measurement is typically applied.

### 4.3 SAR Measurement Procedure

The DUT is set to transmit at the required power in line with product specification, at each frequency relating to the LOW, MID, and HIGH channel settings.

Pre-scans are made on the device to establish the location for the transmitting antenna, using a large area scan in either air or tissue simulation fluid.

The DUT is placed against the Universal Phantom where the maximum area scan dimensions are larger than the physical size of the resonating antenna. When the scan size is not large enough to cover the peak SAR distribution, it is modified by either extending the area scan size in both the X and Y directions, or the device is shifted within the predefined area.

The area scan is then run to establish the peak SAR location (interpolated resolution set at 1mm<sup>2</sup>) which is then used to orient the center of the zoom scan. The zoom scan is then executed and the 1g and 10g averages are derived from the zoom scan volume (interpolated resolution set at 1mm<sup>3</sup>)

## 5. SAR Measurement System



[ALSAS-10U System Description]

The CRS F3 robot is a 6 axis articulated robot with a reach of 710 mm and a maximum speed of 1016 mm/s.

The PMDPS is a probe mounting and proximity sensing device mounted on joint 6 of the F3 Robot. The PMDPS purpose is to hold the probe, house the data acquisition hardware and detect the phantom surface. It can detect a flat-phantom surface to a tolerance of +/- .05 mm. The PMDPS is also equipped with an E-Stop feature that is designed to protect probes and the user from harm. If the probe collides with an object the E-Stop will be triggered and the robot will stop immediately.

The phantoms sit on top of the workstation and are positioned such that the robot has optimal reach into all areas of each phantom. The system contains a SAM-Left, SAM-Right and a Uni-Phantom TM that can be used as a flat phantom for system validations.

The Device positioner is a plastic positioning device for the DUT. It has 8 degrees of freedom that can be locked individually and a 15 degree touch to tilt feature for fast and accurate repositioning.

The shelves in the ALSAS-10U system can be adjusted to accommodate larger devices. The workstation rests on levellers that can be adjusted to ensure that the system is level.

The system consists of the following components;

- 1) CRS F3 Robot
- 2) PMDPS
- 3) Phantoms
- 4) Device Positioner
- 5) Adjustable Shelves
- 6) Work Station
- 7) Probes
- 8) Dipoles (not in picture)

Some of the components are described in details in the following sub-sections.

## 5.1 E-field Probe



The APREL Laboratories E-Field probe utilizes an orthogonally triangular sensor arrangement.

E-Field Probes have been characterized from 30MHz to 6GHz with the probe diameter scientifically verified for use at frequencies above 3GHz eliminating the need for separate probe types.

The isotropic E-Field probe used by APREL Laboratories, has been fully calibrated and assessed for isotropicity and sensitivity in both air and tissue, including boundary effect within a controlled ISO-IEC 17025 accredited laboratory.

SAR is assessed with the calibrated probe which can be positioned at a user defined or default height(s) of 2.4 or 4mm from phantom surfaces so as to minimize any resultant boundary effect due to the probe being in close proximity to the phantom surface and provides improved measurement uncertainty at higher frequencies.

A new 2.8mm probe is now available for use at higher frequencies allowing for smaller scan resolutions and greater measurement point density.

Compliant Standards	IEEE 1528, IEC 62209 Part 1 & 2
Frequency Range	30 MHz ~ 6 GHz
Sensitivity	0.60 $\mu\text{V}/(\text{V}/\text{m})^2$ to 1.25 $\mu\text{V}/(\text{V}/\text{m})^2$
Dynamic Range SAR	0.001 W/kg to 100 W/kg
Isotropic Response Axial	Better than 0.2dB in air Better than 0.05dB in tissue
Hemispherical isotropy	$\pm 0.3$ dB or better
Diode Compression Point (DCP)	Calibrated for Specific Frequency typically 95mV +/- 10%
Linearity	$\pm 0.2$ dB or better
Probe Tip Radius	<2.9mm
Sensor Offset	1.56 ( $\pm 0.02$ mm)
Probe Length	290 mm
Video Bandwidth	@ 500 Hz: 1 dB @ 1K Hz: 3 dB
Boundary Effect	Less than 2% for distances greater than 1.4mm
Material	Ertalyte™
Connector	6 Pin Bayonet
Probe Diameter	Less than 2.8mm



## 5.2 Device Positioner



The APREL Laboratories Universal Device Positioner has been developed so as to allow complete freedom of movement of a DUT. Developed to hold the DUT in the equivalent of free space to avoid additional loading attributable to the material used in the construction of the positioner so as to reduce measurement uncertainty.

Positioner has a built-in 15 degree feature used for fast and accurate touch to tilt movement.

The APREL device positioner can hold in-place devices such as handsets, smart phones, Clam shell phones, PDA's and small size tablet PC's.

When used with the Universal Work Station and its adjustable shelves, the positioned provides 8 degrees of motion, and does not require the user to crouch or sit on the floor (a stool or chair can be used) when positioning the DUT against a phantom.

Compliant Standards	IEEE 1528, IEC 62209 Part 1 & 2
Dielectric constant	Less than 5.0
Loss Tangent	Less than 0.05
Number of Axis	6 axis freedom of movement (8 when utilized with ALSAS-10U Workstation)
Translation Along MB Line	± 76.2 mm
Translation Along NF Line	± 38.1 mm
Translation Along Z Axis	± 25.4 mm (expandable up to 500 mm)
Rotation Around MB Line (yaw)	±10°
Rotation Around NF (pitch)	± 30°
Line Rotation (roll)	360° full circle
Maximum Grip Range	0 mm to 150 mm
Material	Resistant to DGBE and all other tissue stimulant materials
Tilt Movement	Full movement with built-in 15° gauge

### 5.3 6 Axis Articulated Robot ALS-F3



ALSAS-10U utilizes a six axis articulated robot, which is controlled using a Pentium based real-time movement controller. The movement kinematics engine utilizes proprietary (Thermo CRS) interpolation and extrapolation algorithms, which allow full freedom of movement for each of the six joints within the working envelope.

The accuracy of the probe tip positioning over the measurement area is better than 0.05 mm.

The robot is capable of moving the probe to angles greater than 30°.

Robot positioning repeatability should only be used as a reference when a process has been developed for repeated point to point detection. This value is not relevant to SAR measurements as it is not expected that a user would measure the exact same condition\*\* more than 100 times (as per the robotic manufacturers standard for determining the positional repeatability).

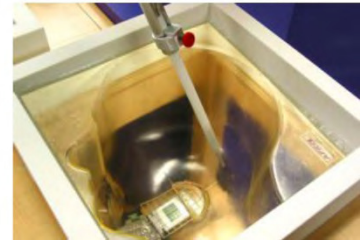
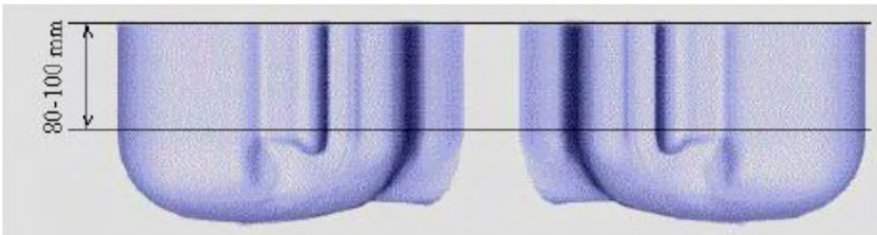
\*\*Condition specified above with respect to SAR measurements would reflect a process executed on a DUT which has been defined, characterized, setup and measured repeatedly without any changes to the setup condition for more than 100 times.

Compliant Standards	IEEE 1528, IEC 62209 Part 1 & 2
Dielectric constant	Less than 5.0
Loss Tangent	Less than 0.05
Number of Axis	6 axis freedom of movement (8 when utilized with ALSAS-10U Workstation)
Translation Along MB Line	± 76.2 mm
Translation Along NF Line	± 38.1 mm
Translation Along Z Axis	± 25.4 mm (expandable up to 500 mm)
Rotation Around MB Line (yaw)	± 10°
Rotation Around NF (pitch)	± 30°
Line Rotation (roll)	360° full circle
Maximum Grip Range	0 mm to 150 mm
Material	Resistant to DGBE and all other tissue stimulant materials
Tilt Movement	Full movement with built-in 15° gauge

## 5.4 SAM Phantoms



The APREL Laboratories SAM phantoms have been designed so as to aid repeatability and positioning for any DUT. Developed using the IEEE SAM CAD file they are fully compliant with the requirements for IEEE 1528, IEC 62209 Part 1 and 2 (draft) and FCC Supplement C. Both the left and right SAM phantoms are sagittally cut and can be interchangeable on the Universal Workstation. The phantoms are transparent and include the IEEE 1528 grid with visible NF and MB lines. The phantom is surrounded by an Acrylic Polymer Blend frame, which adds additional support and load bearing characteristics.



Compliant Standards	IEEE 1528, IEC 62209 Part 1 & 2
SAM	In accordance with the IEEE 1528 standard & IEC 62209 Part 1
Material	Composite urethane which allows for the device to be viewed through the phantom, resistant to DGBE
Phantom Shell Shape Tolerance	Fully calibrated to be better than $\pm 0.2$ mm
Frame Material	Corian®
Tissue Simulation Volume	7 liter with $15.0 \pm 0.5$ cm tissue
Thickness	2 mm $\pm 0.2$ mm 6 mm $\pm 0.2$ mm at NF/MB intersection
Loss Tangent	<0.05
Relative Permittivity	<5
Resistant to Solvents	Resistant to all solvents used for tissue manufacturing detailed in IEEE 1528 & IEC 62209
Load Deflection	<1mm with sugar water compositions
Manufacturing Process	Injection Molded
Phantom Weight	Less than 10kg when filled with 15cm of simulation tissue

## 5.5 Flat Phantoms



The APREL Flat Phantom has been developed as an engineering tool for SAR compliance and development testing of handheld and body-mounted wireless devices in the frequency range of 30 MHz to 6 GHz. The enhanced design allows repeatable measurements for a wide range of devices, including handsets, PDA units, laptops, tablets, computers, and validation dipoles.

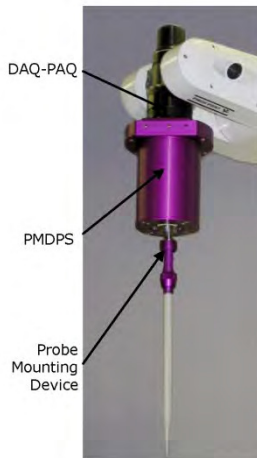
The APREL Flat Phantom is IEEE 1528; IEC 62209-1/IEC 62209-2 (Elliptic flat phantoms); FCC OET Bulletin 65 /Ed. 97-01 (custom flat phantoms) compliant and compatible with tissue-equivalent liquid chemicals.

Compliant Standards	IEEE-1528, IEC 62209, CENELEC, and others
Manufacturing Process	Compression molded
Material	S-Glass and Vinyl Ester Resin
Phantom Shell Shape Tolerance	Less than $\pm 0.2$ mm
Operating Frequency Range	30 MHz – 6 GHz
Tissue Simulation Volume	12.8 liter with a liquid depth of 150 mm
Shell Thickness	2 mm $\pm 0.2$ mm
Loss Tangent	<0.05
Relative Permittivity	<4
Resistant to Solvents	Resistant to all solvents specified in IEEE 1528, IEC 62209 (Part 1 and 2)
Load Deflection	<1.8 mm
Dimensions without frame	340 mm x 270 mm x 225 mm

### Additional Phantom Specification Details

- Clear Phantoms for improved positioning of DUT and measurement repeatability provides overall improvement to uncertainty of the SAR measurement.
- Overall phantom shell thickness uncertainty is +/- 0.2mm
- Lower volume phantoms need less than 7l of tissue for SAR measurements.
- Corian™ frames with built-in spout for easier tissue evacuation.
- Permanent IEEE 1528 and IEC 62209 positioning reference markings included on phantom for better positioning accuracy, repeatability and improvement to uncertainty of the SAR measurement (see images on next page).
- Additional markings are included on phantoms to improve DUT positioning and accuracy.
- Universal Phantom™ for use in validation, body, and head SAR evaluations. The Universal Phantom™ speeds up the measurement process by allowing for left and right measurements to be made in one measurement step (less than 10 minutes for complete process).
- Weight of SAM and Universal Phantom™ when filled is less than 10 kg.
- After test completion phantoms and tissue can be placed in storage box until next use.

## 5.6 DAQ-PAQ (Analog to Digital Electronics)



ALSAS 10U incorporates a fully calibrated DAQ-PAQ (analog to digital conversion system) which has a 4 channel input stage, combined with the integrated amplifier module. The input signal is amplified accordingly so as to offer a dynamic range from 4  $\mu$ V to 330 mV. Integration of the fields measured is carried out at board level utilizing a Co-Processor utilizing proprietary algorithms. Improvements to measurement speed are improved by sending processed data down to the main computational module.

PMDPS is used to hold a probe and to detect complex boundary locations (curved and flat surfaces) during a SAR or HAC assessment process. It utilizes relative movements of internal components to trigger integrated micro-sensor mechanisms in order to detect boundary(s) and consequently position the probe at the specified distance relative to a boundary in order to achieve accurate and repeatable measurements.

All surface detection methods are controlled by a proprietary algorithm which dynamically compensates for every detection point, and allows for a 20-30% improvement to surface detection speeds. By eliminating optical detection sensors uncertainty is further reduced by integrating micro detection sensors which can determine movements of less than 1 $\mu$ m.

Amplifier Range	4 $\mu$ V to 330 mV
ADC	16 Bit optically isolated
Built-in E-Stop Feature	Emergency Stop feature to prevent damage of equipment and for user safety purposes
Field Integration	Local Co-Processor utilizing proprietary integration algorithms
SAR Dynamic Range	0.001 W/kg -100 W/kg.
Ambient Noise	Below 0.001 W/kg measured with probe in tissue
LED Indication	Boundary detection and DAQ-PAQ State
Number of Input Channels	4 in total 3 dedicated and 1 spare for future upgrades
Communication	Optically isolated packet data via RS232
Robot Arm Integration	DAQ-PAQ and Boundary Detection Unit are mounted directly onto joint 6 of the F3 arm utilizing joint 6 tool (ISO Standard M8 Mounting Plate) to allow easy integration and removal (no angular interface)
Supply	DC supply powered by an isolated external supply unit
LED Indicators	Probe status (amplifier on) and boundary detection

Additional PMDPS Specification Details:

- Accuracy of Positioning: Better than 10 $\mu$ m at 6GHz.
- SAR Uncertainty: Better than 0.01 W/kg SAR at 6Gz.
- Detection Mechanism: 2 x 360° Stage Axial and Lateral Detection at 6GHz.
- Emergency Stop: 4 Stage 360° Axial and Lateral Detection at 6GHz.
- Probe Mounting: 6 Pin Bayonet for Fast Probe Change.
- Calibration: Every PMDPS is Calibrated to 0.01 W/kg SAR at 6GHz.

## 5.7 Validation Dipoles



APREL have developed a range of dipoles for use in dosimetric (SAR) and near/far field applications.

Validation dipoles have been designed using the data presented in IEEE-1528, IEC-62209 1&2.

All tuned dipoles have a return loss greater than -20 dBm, for dosimetric applications.

Compliant Standards	EEE 1528, IEC 62209 Part 1 & 2, EN50361
Electrical	Symmetrical Dipole with variable $\lambda$ /divisor
Frequency range	30 MHz – 6 GHz
Application	Tuned for Dosimetric System Validation
Material	Rigid Coated Brass
Dipole Diameter	1.805 mm From Center (3.6mm)
Calibration	Return Loss, Standing Wave Ratio, Impedance & 1 & 10 g Averages
Length	Dependent on Specification
Return Loss	> -20 dBm
Max Power Input	100 Watt

## 5.8 Test Equipment List

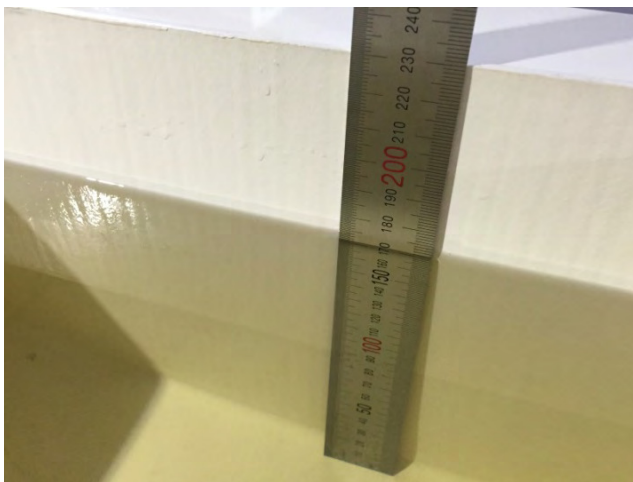
No.	Instrument	Manufacturer	Model	S/N	Due to cal date	Cal interval	used
1	The Teach Pedant	Thermo ELECTRON CORPORATION	STP 500	STP0502506	N/A	N/A	<input checked="" type="checkbox"/>
2	Universal Phantom	APREL Laboratories	ALS-P-UP-1	None	N/A	N/A	<input type="checkbox"/>
3	Flat Phantom	APREL Laboratories	ALS-UM-FLAT	153-00102	N/A	N/A	<input checked="" type="checkbox"/>
4	Left Ear SAM Phantom	APREL Laboratories	ALS-P-SAM-L	130-00316	N/A	N/A	<input type="checkbox"/>
5	Right Ear SAM Phantom	APREL Laboratories	ALS-P-SAM-R	140-00367	N/A	N/A	<input type="checkbox"/>
6	6 Axis Articulated Robot	Thermo CRS	ALS-F3	RAF0504263	N/A	N/A	<input checked="" type="checkbox"/>
7	C500C CONTROLLER FOR F3 ROBOTS	Thermo CRS	UMI-R3-310	RCF0503290	N/A	N/A	<input checked="" type="checkbox"/>
8	Data Acquisition Package	APREL Laboratories	ALS-DAQ-PAQ-3	110-00204	N/A	N/A	<input checked="" type="checkbox"/>
9	Probe Mounting Device and Boundary Detection Sensor System	APREL Laboratories	ALS-PMDPS-3	120-00269	N/A	N/A	<input checked="" type="checkbox"/>
10	Device Holder	APREL Laboratories	ALS-H-E-SET-2	170-00507	N/A	N/A	<input checked="" type="checkbox"/>
11	Reference Dipole	APREL Laboratories	ALS-D-450-S-2	175-00504	2017.08.28	2 Year	<input checked="" type="checkbox"/>
12	Reference Dipole	APREL Laboratories	ALS-D-600-S-2	174-00101	2016.08.19	2 Year	<input type="checkbox"/>
13	Reference Dipole	APREL Laboratories	ALS-D-835-S-2	180-00555	2017.02.14	2 Year	<input type="checkbox"/>
14	Reference Dipole	APREL Laboratories	ALS-D-900-S-2	190-00614	2017.02.14	2 Year	<input type="checkbox"/>
15	Reference Dipole	APREL Laboratories	ALS-D-1800-S-2	200-00656	2017.02.14	2 Year	<input type="checkbox"/>
16	Reference Dipole	APREL Laboratories	ALS-D-1900-S-2	210-00717	2017.02.14	2 Year	<input type="checkbox"/>
17	Reference Dipole	APREL Laboratories	ALS-D-2000-S-2	212-00830	2017.02.14	2 Year	<input type="checkbox"/>
18	Reference Dipole	APREL Laboratories	ALS-D-2450-S-2	220-00764	2017.02.14	2 Year	<input type="checkbox"/>
19	Reference Dipole	APREL Laboratories	ALS-D-BB-S-2	235-00807	2017.02.14	2 Year	<input type="checkbox"/>
20	Miniature E-Field Probe	APREL Laboratories	ALS-E-020	271	2016.08.26	1 year	<input checked="" type="checkbox"/>
21	Miniature E-Field Probe	APREL Laboratories	ALS-DR	028	N/A	N/A	<input type="checkbox"/>
22	Di-Electric Probe	APREL Laboratories	ALS-PR-DIEL	260-00961	N/A	N/A	<input type="checkbox"/>
23	Low pass filter	WAINWRIGMCS INSTRUMENTS GMBH	WLJS1000-6EF	1	2016.02.04	1 year	<input checked="" type="checkbox"/>
24	Low pass filter	WAINWRIGMCS INSTRUMENTS GMBH	WLJS2500-6EF	1	2016.02.04	1 year	<input type="checkbox"/>
25	High pass Filter	WAINWRIGMCS INSTRUMENTS GMBH	WHJS3000-10EF	1	2016.02.04	1 year	<input type="checkbox"/>
26	Dual directional coupler	HEWLETT PACKARD	778D	17693	2016.02.04	1 year	<input checked="" type="checkbox"/>
27	Dual directional coupler	HEWLETT PACKARD	772D	2839A00924	2016.02.04	1 year	<input type="checkbox"/>
28	3.5 mm Cal. Kit	Agilent Technologies	85033D	3423A07123	N/A	N/A	<input checked="" type="checkbox"/>
29	3 dB Attenuator	Agilent Technology	8491B	MY39263672	2016.02.04	1 year	<input checked="" type="checkbox"/>
30	Attenuator	HP	8498A	3318A09485	2016.02.04	1 year	<input checked="" type="checkbox"/>
31	EPM Series Power meter	Agilent Technology	E4418B	MY41293610	2016.02.04	1 year	<input checked="" type="checkbox"/>
32	Power sensor	Agilent Technology	E9300A	MY41496666	2016.02.04	1 year	<input checked="" type="checkbox"/>
33	EPM Series Power meter	Agilent Technology	E4418B	GB39512547	2016.02.05	1 year	<input checked="" type="checkbox"/>
34	Power Sensor	Agilent Technology	E9300A	MY41496631	2016.02.05	1 year	<input checked="" type="checkbox"/>
35	RF Amplifier	Sung san Electronics Communications	SSA024	SSEC0001	2016.02.04	1 year	<input checked="" type="checkbox"/>
36	Signal Generator	ROHDE&SCHWARZ	SMT-06	100552	2016.02.04	1 year	<input checked="" type="checkbox"/>
37	Network Analyzer	Agilent	8753ES	US39170869	2016.09.16	1 year	<input checked="" type="checkbox"/>
38	Radio Communication Analyzer	ANRITSU	MT8815A	6200429622	2016.02.04	1 year	<input type="checkbox"/>
39	CDMA Mobile Station Test Set	AGILENT	E8285A	US40081298	2016.02.05	1 year	<input type="checkbox"/>
40	Wideband Radio Communication Tester	ROHDE&SCHWARZ	CMW500	127302	2016.04.02	1 year	<input type="checkbox"/>
41	85070E.Dielectric Probe kit	Agilent	85070 E	None	N/A	N/A	<input checked="" type="checkbox"/>

## 6. Measurement Results

### 6.1 Tissue Simulating Liquids

The simulating liquids should be checked at the beginning of a series of SAR measurements to determine if the dielectric parameters are within the tolerances of the specified target values. The uncertainty due to the liquid conductivity and permittivity arises from two different sources. The first source of error is the deviation of the liquid conductivity from its target value ( $\max \pm 5\%$ )

For head SAR testing, the liquid height from the ear reference point of the phantom to the liquid top surface is larger than 15 cm. For body SAR testing, the liquid height from the center of the flat phantom to the liquid top surface is larger than 15 cm.



Head Tissue



Body Tissue

[Photo of liquid height for SAR testing]

#### 6.1.1 Recipes for tissue simulating liquid.

Ingredients (% by weight)	Freq. (MHz)	
	450	
Tissue Type	Head	Body
Water	38.56	51.16
Salt (NaCl)	3.95	1.49
Sugar	56.32	46.78
HEC	0.98	0.52
Bactericide	0.19	0.05
Triton X-100	0.0	0.0
DGBE	0.0	0.0
Dielectric Constant	43.42	58.0
Conductivity (S/m)	0.85	0.83



### 6.1.2 Simulated tissue liquid parameter confirmation

The head and Body tissue dielectric parameters recommended by the KDB865664 D01 have been incorporated in the following table.

Target Frequency (MHz)	Head		Body	
	$\epsilon_r$	$\sigma$ (S/m)	$\epsilon_r$	$\sigma$ (S/m)
150	52.3	0.76	61.9	0.80
300	45.3	0.87	58.2	0.92
<b>450</b>	<b>43.5</b>	<b>0.87</b>	<b>56.7</b>	<b>0.94</b>
835	41.5	0.90	55.2	0.97
900	41.5	0.97	55.0	1.05
915	41.5	0.98	55.0	1.06
1450	40.5	1.20	54.0	1.30
1610	40.3	1.29	53.8	1.40
1800 - 2000	40.0	1.40	53.3	1.52
2450	39.2	1.80	52.7	1.95
3000	38.5	2.40	52.0	2.73
5800	35.3	5.27	48.2	6.00

( $\epsilon_r$  = relative permittivity,  $\sigma$  = conductivity and  $\rho = 1000$  kg/m<sup>3</sup>)

### 6.1.3 Measuring result for simulating liquid

Liquid		Parameters	Target	Measured	Deviation (%)	Limit (%)	Date	Note		
Freq. (MHz)	Temp. (°C)									
400	21	Permittivity	43.5	44.75	2.87	±5	2015.09.30	Head tissue		
		Conductivity	0.87	0.85	2.30	±5				
415	21	Permittivity	43.5	43.66	0.37	±5				
		Conductivity	0.87	0.88	1.15	±5				
430	21	Permittivity	43.5	43.32	0.41	±5				
		Conductivity	0.87	0.88	1.15	±5				
440	21	Permittivity	43.5	43.00	1.15	±5				
		Conductivity	0.87	0.88	1.15	±5				
450	21	Permittivity	43.5	42.96	1.23	±5				
		Conductivity	0.87	0.89	1.92	±5				
400	21	Permittivity	56.7	57.59	1.57	±5			2015.09.30	Body tissue
		Conductivity	0.94	0.90	4.26	±5				
415	21	Permittivity	56.7	57.63	1.64	±5				
		Conductivity	0.94	0.91	3.19	±5				
430	21	Permittivity	56.7	56.87	0.30	±5				
		Conductivity	0.94	0.92	2.13	±5				
440	21	Permittivity	56.7	56.91	0.37	±5				
		Conductivity	0.94	0.93	1.06	±5				
450	21	Permittivity	56.7	56.86	0.28	±5				
		Conductivity	0.94	0.94	0.00	±5				

Note: Please see appendix for the plot of measured tissue.

Liquid		Parameters	Target	Measured	Deviation (%)	Limit (%)	Date	Note		
Freq. (MHz)	Temp. (°C)									
400	21	Permittivity	43.5	44.48	2.25	±5	2015. 11.02	Head tissue		
		Conductivity	0.87	0.84	3.45	±5				
406.1	21	Permittivity	43.5	43.56	0.14	±5				
		Conductivity	0.87	0.86	1.15	±5				
415	21	Permittivity	43.5	43.51	0.02	±5				
		Conductivity	0.87	0.87	0.00	±5				
430	21	Permittivity	43.5	43.26	0.55	±5				
		Conductivity	0.87	0.88	1.15	±5				
440	21	Permittivity	43.5	42.69	1.86	±5				
		Conductivity	0.87	0.88	1.15	±5				
450	21	Permittivity	43.5	42.84	1.52	±5				
		Conductivity	0.87	0.89	2.30	±5				
400	21	Permittivity	56.7	57.67	1.71	±5			2015. 11.02	Body tissue
		Conductivity	0.94	0.90	4.26	±5				
406.1	21	Permittivity	56.7	57.33	1.11	±5				
		Conductivity	0.94	0.90	4.26	±5				
415	21	Permittivity	56.7	57.68	1.73	±5				
		Conductivity	0.94	0.91	3.19	±5				
430	21	Permittivity	56.7	57.06	0.63	±5				
		Conductivity	0.94	0.92	2.13	±5				
440	21	Permittivity	56.7	56.99	0.51	±5				
		Conductivity	0.94	0.93	1.06	±5				
450	21	Permittivity	56.7	57.00	0.53	±5				
		Conductivity	0.94	0.94	0.00	±5				

Note: Please see appendix for the plot of measured tissue.

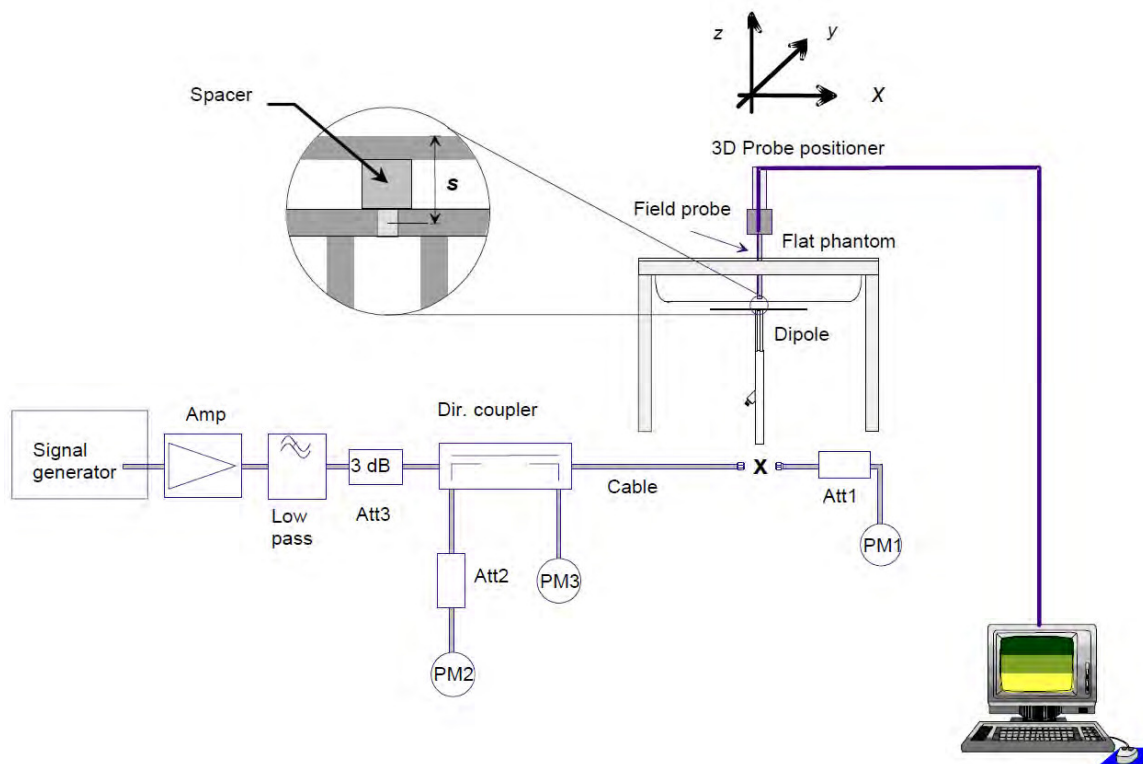
## 6.2 System Verification

### 6.2.1 Purpose of system performance check

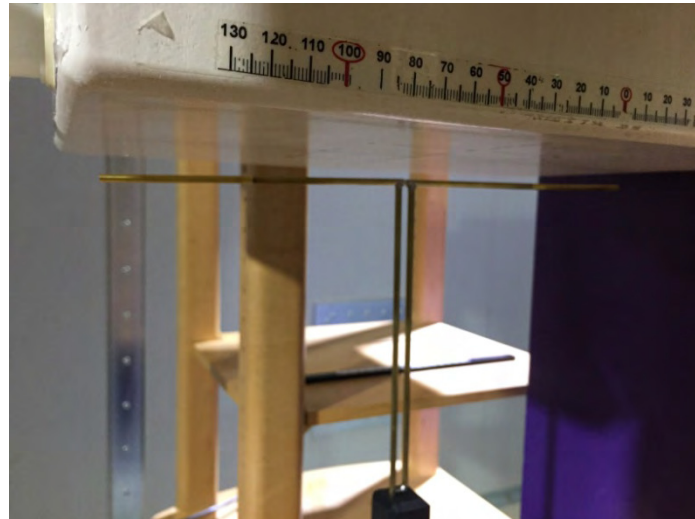
The system performance check is performed prior to any usage of the system in order to guarantee reproducible results. The system performance check verifies that the system operates within its specifications of  $\pm 5\%$ . Since the SAR value is calculated from the measured electric field, dielectric constant and conductivity of the body tissue and the SAR is proportional to the square of the electric field. So, the SAR value will be also proportional to the RF power input to the system validation dipole under the same test environment. In our system validation test, 100 mW RF dipole input power was used. The 1g and 10g spatial average SAR values normalized to 1 W dipole input power give reference data for comparisons and it's equal to 10x(dipole forward power)

### 6.2.2 System setup

In the simplified setup for system evaluation, the DUT is replaced by a calibrated dipole and power source is replaced by a continuous wave that comes from a signal generator. The calibrated dipole must be placed beneath the flat phantom with the correct distance marking spacer. The distance holder should touch the phantom surface with a light pressure at the reference marking and be oriented parallel to the short side of the phantom. The equipment setup is shown below:



[System set-up for system validation]



[Photo of dipole setup]

### 6.2.3 Verification Results

Freq [MHz]	Test Results								Date	Tissue Type
	Measured 1 g SAR [W/kg]		Measured 10 g SAR [W/kg]		Target					
	100 mW	1 W	100 mW	1 W	1 g SAR [W/kg]	10g SAR [W/kg]	1g Dev. [%]	10g Dev. [%]		
450	0.444	4.44	0.298	2.98	4.65	3.047	-4.52	-2.20	2015.09.30	Head
450	0.428	4.28	0.288	2.88	4.43	2.997	-3.39	-3.90	2015.09.30	Body
450	0.447	4.47	0.303	3.03	4.65	3.047	-3.87	-0.56	2015.11.02	Head
450	0.422	4.22	0.285	2.85	4.43	2.997	-4.74	-4.90	2015.11.02	Body

Note:

1. Comparing to the original SAR value provided by APREL, the validation data should be within its specification of 10 %. Above table shows the target SAR and measured SAR after normalized to 1W input power.
2. Please see appendix for the plot of system verification test.

### 6.3 DUT Testing Position

Please see appendix for the DUT setup photos

### 6.4 SAR measurement procedure

The ALSAS-10U calculates SAR using the following equation,

$$SAR = \frac{\sigma |E|^2}{\rho}$$

Where:  $\sigma$  is the conductivity of the tissue,  $\rho$  is the mass density of the tissue and E is the RMS electrical field strength.

The measurement procedures are as follows:

- 1) For DUT, using engineering software and (or) radio communication tester to transmit RF power continuously in the middle channel.
- 2) Measure output power through RF cable and power meter.
- 3) Place the DUT in the positions described in the appendix for the DUT setup photos.
- 4) set area scan, grid size and other setting on the ALSAS-10U software.
- 5) Taking data for the middle channel on each testing position.
- 6) Find out the largest SAR result on these testing positions of each band
- 7) measure SAR results for the lowest and highest channels in worst SAR testing position.

The area scan is then run to establish the peak SAR location (interpolated resolution set at 1 mm<sup>2</sup>) which is then used to orient the center of the zoom scan. The zoom scan is then executed and the 1 g and 10 g averages are derived from the zoom scan volume (interpolated resolution set at 1 mm<sup>3</sup>).

### 6.5 SAR Exposure Limits

Type of Exposure	SAR Limit(W/kg)	
	(General Population /Uncontrolled Exposure Environment)	(Occupational / Controlled Exposure Environment)
Spatial Average (averaged over the whole body)	0.08	0.4
Spatial Peak (averaged over any 1 g of tissue)	1.6	8.0
Spatial Peak (hands/wrists/feet/ankles averaged over 10 g)	4.0	20.0

## 6.6 SAR test result

### HEAD Configuration

No	Mode	Freq.	CH	Test Position	Cond Pwr.	Power Drift (%)	Measured 1 g SAR (W/Kg)	50 % Duty cycle	Scaled 1 g SAR (W/Kg)	Scaling factor	Limit (W/Kg)	NOTE
1	Analog	440.0000	High	Face-up	36.60	-4.175	2.942	1.471	1.490 <sup>#1</sup>	1.32	8.0	Ant A (HW-423W-CT405)
2	Digital	406.1125	Low	Face-up	36.69	-4.968	5.445	2.723	2.758 <sup>#2</sup>	1.29	8.0	
3		415.0000	Mid	Face-up	36.67	-4.205	3.367	1.684	1.705	1.30	8.0	
4		430.0000	Mid	Face-up	36.25	-4.082	3.480	1.740	1.765	1.43	8.0	
5		440.0000	High	Face-up	36.32	-4.056	3.959	1.980	2.007	1.41	8.0	
6	Analog	440.0000	High	Face-up	36.60	-4.424	3.417	1.709	1.731 <sup>#3</sup>	1.32	8.0	Ant B (HW-423H-CT405)
7	Digital	406.1125	Low	Face-up	36.69	-4.752	5.982	2.991	3.030 <sup>#4</sup>	1.29	8.0	
8		415.0000	Mid	Face-up	36.67	-4.185	2.827	1.414	1.432	1.30	8.0	
9		430.0000	Mid	Face-up	36.25	-3.965	3.644	1.822	1.848	1.43	8.0	
10		440.0000	High	Face-up	36.32	-4.175	2.942	1.471	1.492	1.41	8.0	

### BODY Configuration

No	Mode	Freq.	CH	Test Position	Cond Pwr.	Power Drift (%)	Measured 1 g SAR (W/Kg)	50 % Duty cycle	Scaled 1 g SAR (W/Kg)	Scaling factor	Limit (W/Kg)	NOTE
1	Analog	440.0000	High	Body-worn	36.60	-3.995	3.302	1.651	1.673 <sup>#5</sup>	1.32	8.0	Ant A (HW-423W-CT405)
2	Digital	406.1125	Low	Body-worn	36.69	-4.040	6.272	3.136	3.176 <sup>**#6</sup>	1.29	8.0	
3		415.0000	Mid	Body-worn	36.67	-4.128	3.776	1.888	1.913	1.30	8.0	
4		430.0000	Mid	Body-worn	36.25	-4.028	3.893	1.947	1.974	1.43	8.0	
5		440.0000	High	Body-worn	36.32	-3.971	4.532	2.266	2.298	1.41	8.0	
6	Analog	440.0000	High	Body-worn	36.60	-3.961	4.077	2.039	2.065 <sup>#7</sup>	1.32	8.0	Ant B (HW-423H-CT405)
7	Digital	406.1125	Low	Body-worn	36.69	-4.141	4.689	2.345	2.375 <sup>#8</sup>	1.29	8.0	
8		415.0000	Mid	Body-worn	36.67	-4.028	3.283	1.642	1.663	1.30	8.0	
9		430.0000	Mid	Body-worn	36.25	-4.108	3.043	1.522	1.543	1.43	8.0	
10		440.0000	High	Body-worn	36.32	-3.995	3.302	1.651	1.674	1.41	8.0	

\*,\*\* highest SAR value in the each Configuration.

#### Note:

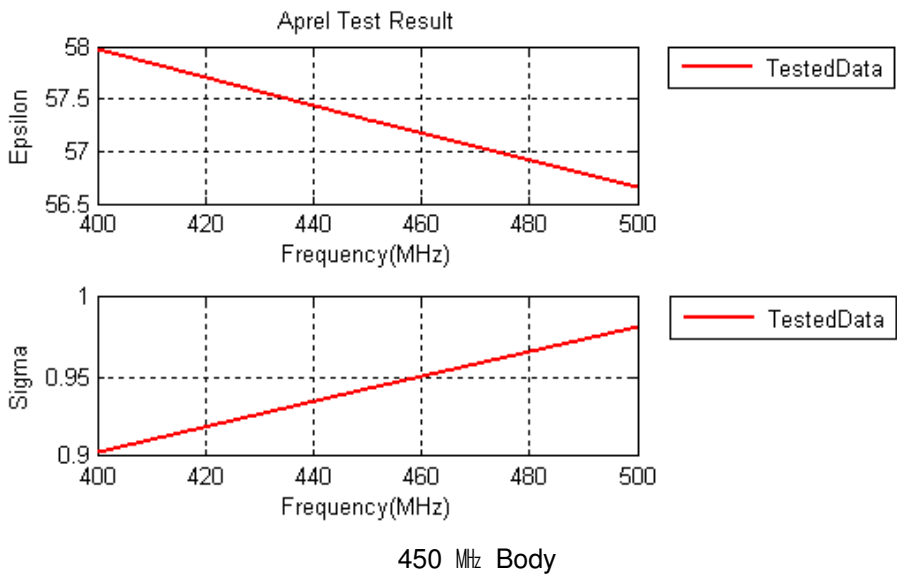
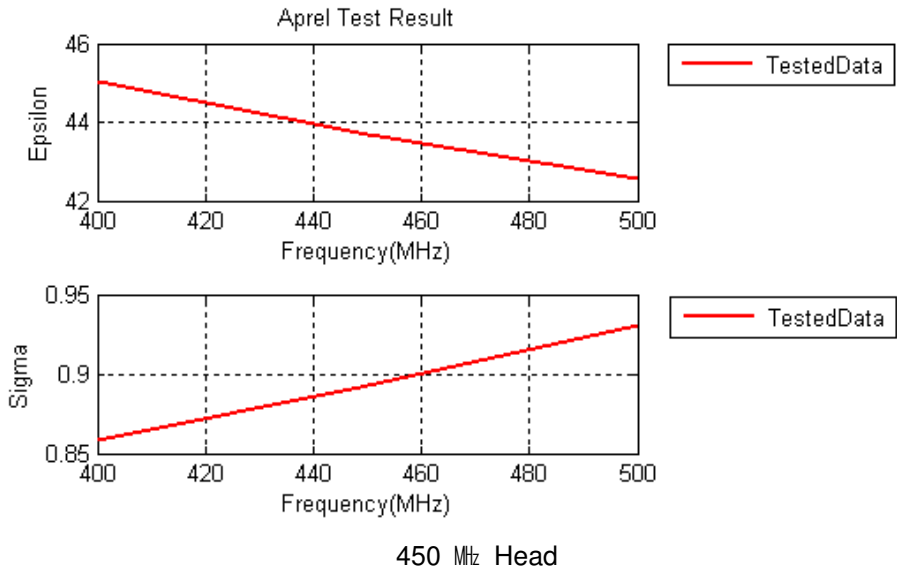
1. When the 1-g SAR is  $\leq 3.5$  W/Kg, testing for other channels are not necessary
2. 50% duty cycle only applies to PTT devices.
3. Only one body-worn accessory(Belt-Clip) and one audio accessory(ear/mic:WEP-100) are supplied with a EUT.
4. Only standard battery is supplied with EUT.
5. # means the Plot's number.
6. The highest output power channel to be set as test channel: 440 MHz for analog, 406.1125MHz for digital.

## 7. Uncertainty Assessment

Source of Uncertainty	Tolerance Value	Probability Distribution	Divisor	$c_i^1$ (1-g)	$c_i^1$ (10-g)	Standard Uncertainty (1-g) %	Standard Uncertainty (10-g) %
Measurement System							
Probe Calibration	3.5	normal	1	1	1	3.5	3.5
Axial Isotropy	3.7	rectangular	$\sqrt{3}$	$(1-cp)^{1/2}$	$(1-cp)^{1/2}$	1.5	1.5
Hemispherical Isotropy	10.9	rectangular	$\sqrt{3}$	$\sqrt{cp}$	$\sqrt{cp}$	4.4	4.4
Boundary Effect	1.0	rectangular	$\sqrt{3}$	1	1	0.6	0.6
Linearity	4.7	rectangular	$\sqrt{3}$	1	1	2.7	2.7
Detection Limit	1.0	rectangular	$\sqrt{3}$	1	1	0.6	0.6
Readout Electronics	1.0	normal	1	1	1	1.0	1.0
Response Time	0.8	rectangular	$\sqrt{3}$	1	1	0.5	0.5
Integration Time	1.7	rectangular	$\sqrt{3}$	1	1	1.0	1.0
RF Ambient Condition	3.0	rectangular	$\sqrt{3}$	1	1	1.7	1.7
Probe Positioner Mech.	0.4	rectangular	$\sqrt{3}$	1	1	0.2	0.2
Restriction							
Probe Positioning with respect to Phantom Shell	2.9	rectangular	$\sqrt{3}$	1	1	1.7	1.7
Extrapolation and Integration	3.7	rectangular	$\sqrt{3}$	1	1	2.1	2.1
Test Sample Positioning	4.0	normal	1	1	1	4.0	4.0
Device Holder Uncertainty	2.0	normal	1	1	1	2.0	2.0
Drift of Output Power	4.2	rectangular	$\sqrt{3}$	1	1	2.4	2.4
Phantom and Setup							
Phantom Uncertainty(shape & thickness tolerance)	3.4	rectangular	$\sqrt{3}$	1	1	2.0	2.0
Liquid Conductivity(target)	5.0	rectangular	$\sqrt{3}$	0.7	0.5	2.0	1.4
Liquid Conductivity(meas.)	4.26	normal	1	0.7	0.5	6.0	2.1
Liquid Permittivity(target)	5.0	rectangular	$\sqrt{3}$	0.6	0.5	1.7	1.4
Liquid Permittivity(meas.)	1.57	normal	1	0.6	0.5	0.9	0.8
Combined Uncertainty		RSS				9.0	8.7
Combined Uncertainty (coverage factor=2)		Normal (k=2)				17.9	17.4

[Exposure Assessment Measurement Uncertainty]

**Appendix A : Plot of measured tissue.**





Measuring result table for simulating liquid

450 MHz Head

1st

Freq	Test_e	Test_s
0.4000	45.74	0.87
0.4050	44.80	0.88
0.4061	44.75	0.88*
0.4100	44.55	0.89
0.4150	44.77	0.90
0.4200	44.33	0.89
0.4250	44.53	0.89
0.4300	44.21	0.90
0.4350	44.22	0.89
0.4400	43.98	0.90
0.4450	43.99	0.91
0.4500	43.76	0.91

\*value interpolated

2nd

Freq	Test_e	Test_s
0.4000	44.48	0.84
0.4050	43.56	0.86
0.4061	43.55	0.86*
0.4100	43.52	0.87
0.4150	43.51	0.87
0.4200	43.10	0.88
0.4250	43.45	0.87
0.4300	43.26	0.88
0.4350	43.37	0.87
0.4400	42.69	0.88
0.4450	42.60	0.89
0.4500	42.84	0.89

\*value interpolated

3rd

Freq	Test_e	Test_s
0.4000	44.05	0.84
0.4050	42.88	0.85
0.4061	42.91	0.85*
0.4100	43.03	0.86
0.4150	42.72	0.87
0.4200	42.79	0.86
0.4250	42.81	0.86
0.4300	42.51	0.87
0.4350	42.58	0.87
0.4400	42.34	0.87
0.4450	42.28	0.88
0.4500	42.29	0.88

\*value interpolated

450 MHz Body

1st

Freq	Test_e	Test_s
0.4000	57.62	0.90
0.4050	57.21	0.90
0.4061	57.30	0.90*
0.4100	57.63	0.90
0.4150	57.69	0.90
0.4200	57.27	0.91
0.4250	57.19	0.91
0.4300	56.75	0.92
0.4350	57.12	0.92
0.4400	56.90	0.93
0.4450	56.94	0.93
0.4500	56.71	0.94

\*value interpolated

2nd

Freq	Test_e	Test_s
0.4000	57.67	0.90
0.4050	57.33	0.90
0.4061	57.41	0.90*
0.4100	57.67	0.90
0.4150	57.68	0.91
0.4200	56.96	0.91
0.4250	57.14	0.92
0.4300	57.06	0.92
0.4350	57.07	0.92
0.4400	56.99	0.93
0.4450	56.71	0.93
0.4500	57.00	0.94

\*value interpolated

3rd

Freq	Test_e	Test_s
0.4000	57.50	0.90
0.4050	57.35	0.90
0.4061	57.41	0.90*
0.4100	57.64	0.90
0.4150	57.53	0.91
0.4200	56.98	0.91
0.4250	57.19	0.91
0.4300	56.82	0.92
0.4350	57.09	0.92
0.4400	56.86	0.93
0.4450	56.78	0.93
0.4500	56.87	0.94

\*value interpolated

**Appendix B : Plot of system verification test.**

■ 450MHz Head / 2015. 09. 30

**SAR Test Report**

Report Date : 30-Sep-2015  
By Operator : 123  
Measurement Date : 30-Sep-2015  
Starting Time : 30-Sep-2015 08:34:04 AM  
End Time : 30-Sep-2015 09:04:09 AM  
Scanning Time : 1805 secs

Product Data

Device Name : 450 MHz Dipole  
Serial No. : 175-00504  
Type : Dipole  
Model : ALS-D-450-S-2  
Frequency : 450.00 MHz  
Max. Transmit Pwr : 0.1 W  
Drift Time : 10 min(s)  
Length : 298 mm  
Width : 3.6 mm  
Depth : 3.6 mm  
Orientation : Rotated Right 90°  
Power Drift-Start : 0.448 W/kg  
Power Drift-Finish: 0.444 W/kg  
Power Drift (%) : -0.782  
Picture :

Phantom Data

Name : APREL-Uni  
Type : Uni-Phantom  
Size (mm) : 280 x 280 x 200  
Serial No. : System Default  
Location : Center  
Description : Default

Tissue Data

Type : HEAD  
Serial No. : 450H  
Frequency : 450.00 MHz  
Last Calib. Date : 30-Sep-2015  
Temperature : 21.50 °C  
Ambient Temp. : 22.00 °C  
Humidity : 42.00 RH%  
Epsilon : 42.96 F/m  
Sigma : 0.89 S/m  
Density : 1000.00 kg/cu. m

Probe Data

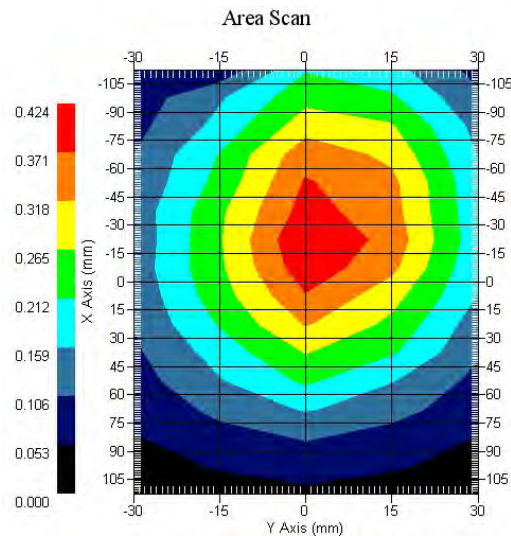
Name : E-Field  
 Model : E-020  
 Type : E-Field Triangle  
 Serial No. : 271\_CW  
 Last Calib. Date : 11-Sep-2015  
 Frequency : 450.00 MHz  
 Duty Cycle Factor: 1  
 Conversion Factor: 6.1  
 Probe Sensitivity: 1.20 1.20 1.20  $\mu\text{V}/(\text{V}/\text{m})^2$   
 Compression Point: 95.00 mV  
 Offset : 1.56 mm

Measurement Data

Crest Factor : 1  
 Scan Type : Complete  
 Tissue Temp. : 21.00 °C  
 Ambient Temp. : 21.00 °C  
 Set-up Date : 30-Sep-2015  
 Set-up Time : 8:22:48 AM  
 Area Scan : 16x5x1 : Measurement x=15mm, y=15mm, z=4mm  
 Zoom Scan : 7x7x7 : Measurement x=5mm, y=5mm, z=5mm

Other Data

DUT Position : Rotated Right 90°  
 Separation : 15



1 gram SAR value : 0.444 W/kg  
 10 gram SAR value : 0.298 W/kg  
 Area Scan Peak SAR : 0.442 W/kg  
 Zoom Scan Peak SAR : 0.630 W/kg

■ 450MHz Body / 2015. 09. 30

## SAR Test Report

Report Date : 30-Sep-2015  
By Operator : 123  
Measurement Date : 30-Sep-2015  
Starting Time : 30-Sep-2015 05:47:07 PM  
End Time : 30-Sep-2015 06:16:46 PM  
Scanning Time : 1779 secs

### Product Data

Device Name : 450 MHz Dipole  
Serial No. : 175-00504  
Type : Dipole  
Model : ALS-D-450-S-2  
Frequency : 450.00 MHz  
Max. Transmit Pwr : 0.1 W  
Drift Time : 10 min(s)  
Length : 298 mm  
Width : 3.6 mm  
Depth : 3.6 mm  
Orientation : Rotated Right 90°  
Power Drift-Start : 0.430 W/kg  
Power Drift-Finish: 0.441 W/kg  
Power Drift (%) : 2.583  
Picture :

### Phantom Data

Name : APREL-Uni  
Type : Uni-Phantom  
Size (mm) : 280 x 280 x 200  
Serial No. : System Default  
Location : Center  
Description : Default

### Tissue Data

Type : BODY  
Serial No. : 450B  
Frequency : 450.00 MHz  
Last Calib. Date : 30-Sep-2015  
Temperature : 21.50 °C  
Ambient Temp. : 22.00 °C  
Humidity : 42.00 RH%  
Epsilon : 56.86 F/m  
Sigma : 0.94 S/m  
Density : 1000.00 kg/cu. m

Probe Data

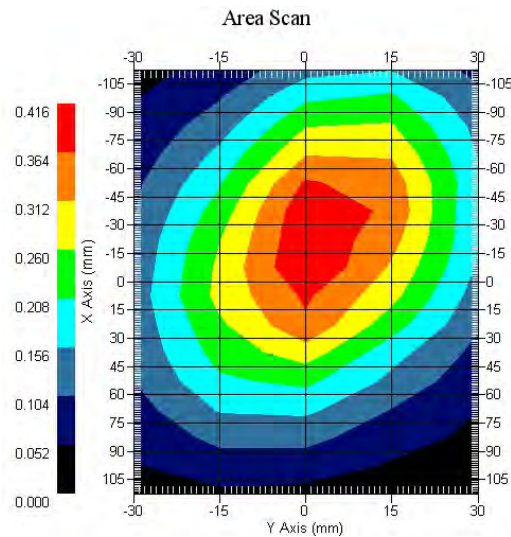
Name : E-Field  
 Model : E-020  
 Type : E-Field Triangle  
 Serial No. : 271\_CW  
 Last Calib. Date : 28-Aug-2015  
 Frequency : 450.00 MHz  
 Duty Cycle Factor: 1  
 Conversion Factor: 6.3  
 Probe Sensitivity: 1.20 1.20 1.20  $\mu\text{V}/(\text{V}/\text{m})^2$   
 Compression Point: 95.00 mV  
 Offset : 1.56 mm

Measurement Data

Crest Factor : 1  
 Scan Type : Complete  
 Tissue Temp. : 21.50 °C  
 Ambient Temp. : 22.00 °C  
 Set-up Date : 30-Sep-2015  
 Set-up Time : 5:08:48 PM  
 Area Scan : 16x5x1 : Measurement x=15mm, y=15mm, z=4mm  
 Zoom Scan : 7x7x7 : Measurement x=5mm, y=5mm, z=5mm

Other Data

DUT Position : Rotated Right 90°  
 Separation : 15



1 gram SAR value : 0.428 W/kg  
 10 gram SAR value : 0.288 W/kg  
 Area Scan Peak SAR : 0.415 W/kg  
 Zoom Scan Peak SAR : 0.620 W/kg

■ 450MHz Head / 2015. 11. 02

## SAR Test Report

Report Date : 02-Nov-2015  
By Operator : 123  
Measurement Date : 02-Nov-2015  
Starting Time : 02-Nov-2015 10:07:54 AM  
End Time : 02-Nov-2015 10:35:09 AM  
Scanning Time : 1635 secs

### Product Data

Device Name : 450 MHz Dipole  
Serial No. : 175-00504  
Type : Dipole  
Model : ALS-D-450-S-2  
Frequency : 450.00 MHz  
Max. Transmit Pwr : 0.1 W  
Drift Time : 10 min(s)  
Length : 298 mm  
Width : 3.6 mm  
Depth : 3.6 mm  
Orientation : Rotated Right 90°  
Power Drift-Start : 0.416 W/kg  
Power Drift-Finish: 0.411 W/kg  
Power Drift (%) : -1.202  
Picture :

### Phantom Data

Name : APREL-Uni  
Type : Uni-Phantom  
Size (mm) : 280 x 280 x 200  
Serial No. : System Default  
Location : Center  
Description : Default

### Tissue Data

Type : HEAD  
Serial No. : 450H  
Frequency : 450.00 MHz  
Last Calib. Date : 02-Nov-2015  
Temperature : 21.50 °C  
Ambient Temp. : 22.00 °C  
Humidity : 38.00 RH%  
Epsilon : 42.84 F/m  
Sigma : 0.89 S/m  
Density : 1000.00 kg/cu. m

Probe Data

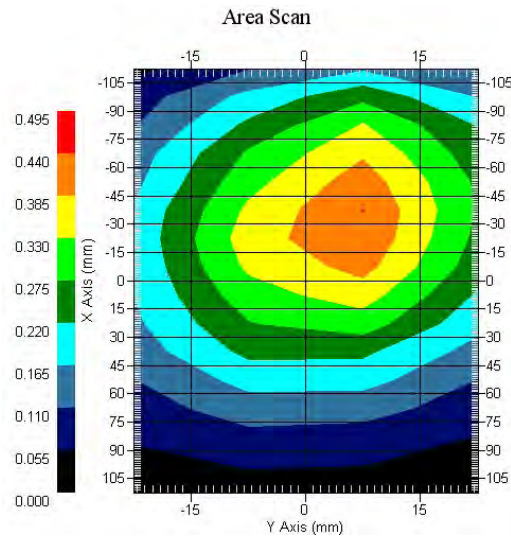
Name : E-Field  
 Model : E-020  
 Type : E-Field Triangle  
 Serial No. : 271\_CW  
 Last Calib. Date : 28-Aug-2015  
 Frequency : 450.00 MHz  
 Duty Cycle Factor: 1  
 Conversion Factor: 6.1  
 Probe Sensitivity: 1.20 1.20 1.20  $\mu\text{V}/(\text{V}/\text{m})^2$   
 Compression Point: 95.00 mV  
 Offset : 1.56 mm

Measurement Data

Crest Factor : 1  
 Scan Type : Complete  
 Tissue Temp. : 21.50 °C  
 Ambient Temp. : 22.00 °C  
 Set-up Date : 02-Nov-2015  
 Set-up Time : 9:47:14 AM  
 Area Scan : 16x4x1 : Measurement x=15mm, y=15mm, z=4mm  
 Zoom Scan : 7x7x7 : Measurement x=5mm, y=5mm, z=5mm

Other Data

DUT Position : Rotated Right 90°  
 Separation : 15



1 gram SAR value : 0.447 W/kg  
 10 gram SAR value : 0.303 W/kg  
 Area Scan Peak SAR : 0.441 W/kg  
 Zoom Scan Peak SAR : 0.660 W/kg



■ 450MHz Body / 2015. 11. 02

## SAR Test Report

Report Date : 02-Nov-2015  
By Operator : 123  
Measurement Date : 02-Nov-2015  
Starting Time : 02-Nov-2015 09:05:34 AM  
End Time : 02-Nov-2015 09:32:41 AM  
Scanning Time : 1627 secs

### Product Data

Device Name : 450 MHz Dipole  
Serial No. : 175-00504  
Type : Dipole  
Model : ALS-D-450-S-2  
Frequency : 450.00 MHz  
Max. Transmit Pwr : 0.1 W  
Drift Time : 10 min(s)  
Length : 298 mm  
Width : 3.6 mm  
Depth : 3.6 mm  
Orientation : Rotated Right 90°  
Power Drift-Start : 0.426 W/kg  
Power Drift-Finish: 0.413 W/kg  
Power Drift (%) : -3.149  
Picture :

### Phantom Data

Name : APREL-Uni  
Type : Uni-Phantom  
Size (mm) : 280 x 280 x 200  
Serial No. : System Default  
Location : Center  
Description : Default

### Tissue Data

Type : BODY  
Serial No. : 450B  
Frequency : 450.00 MHz  
Last Calib. Date : 02-Nov-2015  
Temperature : 21.50 °C  
Ambient Temp. : 22.00 °C  
Humidity : 38.00 RH%  
Epsilon : 57.00 F/m  
Sigma : 0.94 S/m  
Density : 1000.00 kg/cu. m

Probe Data

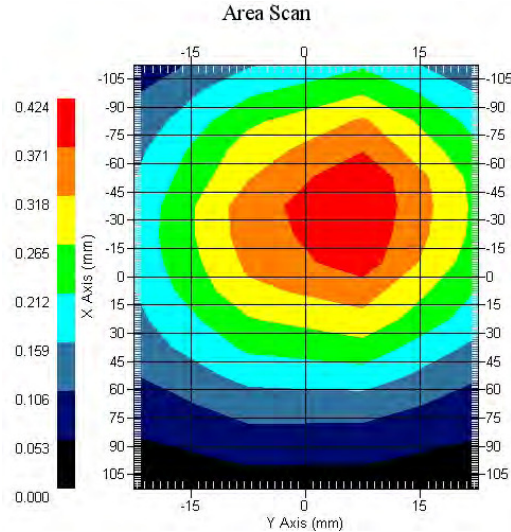
Probe Data  
 Name : E-Field  
 Model : E-020  
 Type : E-Field Triangle  
 Serial No. : 271\_CW  
 Last Calib. Date : 28-Aug-2015  
 Frequency : 450.00 MHz  
 Duty Cycle Factor: 1  
 Conversion Factor: 6.3  
 Probe Sensitivity: 1.20 1.20 1.20  $\mu\text{V}/(\text{V}/\text{m})^2$   
 Compression Point: 95.00 mV  
 Offset : 1.56 mm

Measurement Data

Crest Factor : 1  
 Scan Type : Complete  
 Tissue Temp. : 21.50 °C  
 Ambient Temp. : 22.00 °C  
 Set-up Date : 02-Nov-2015  
 Set-up Time : 5:08:48 PM  
 Area Scan : 16x4x1 : Measurement x=15mm, y=15mm, z=4mm  
 Zoom Scan : 7x7x7 : Measurement x=5mm, y=5mm, z=5mm

Other Data

DUT Position : Rotated Right 90°  
 Separation : 15



1 gram SAR value : 0.422 W/kg  
 10 gram SAR value : 0.285 W/kg  
 Area Scan Peak SAR : 0.422 W/kg  
 Zoom Scan Peak SAR : 0.600 W/kg

## Appendix C : Plot of SAR test.

### Test Plot list

No	Mode	Freq.	CH	Test Position	Measured 1 g SAR (W/Kg)	50 % Duty cycle	Scaled 1 g SAR (W/Kg)	NOTE
1	Analog	440.0000	High	Face-up	2.942	1.471	1.490 <sup>#1</sup>	Ant A (HW-423W-CT405)
2	Digital	406.1125	Low	Face-up	5.445	2.723	2.758 <sup>#2</sup>	
3	Analog	440.0000	High	Face-up	3.417	1.709	1.731 <sup>#3</sup>	Ant B (HW-423H-CT405)
4	Digital	406.1125	Low	Face-up	5.982	2.991	3.030 <sup>*#4</sup>	
5	Analog	440.0000	High	Body-worn	3.302	1.651	1.673 <sup>#5</sup>	Ant A (HW-423W-CT405)
6	Digital	406.1125	Low	Body-worn	6.272	3.136	3.176 <sup>**#6</sup>	
7	Analog	440.0000	High	Body-worn	4.077	2.039	2.065 <sup>#7</sup>	Ant B (HW-423H-CT405)
8	Digital	406.1125	Low	Body-worn	4.689	2.345	2.375 <sup>#8</sup>	

No	Mode	Freq.	CH	Test Position	NOTE
1	Analog	440.000	High	Face-up	Ant A (HW-423W-CT405)

Report Date : 02-Nov-2015  
 By Operator : Miyoung.Lee  
 Measurement Date : 02-Nov-2015  
 Starting Time : 02-Nov-2015 05:10:56 PM  
 End Time : 02-Nov-2015 05:41:31 PM  
 Scanning Time : 1835 secs

Product Data

Device Name : SamYoungTech. Co., Ltd  
 Serial No. : Proto type  
 Type : Other  
 Model : SY4050-LM  
 Frequency : 440.00 MHz  
 Max. Transmit Pwr : 5 W  
 Drift Time : 10 min(s)  
 Length : 105 mm  
 Width : 55 mm  
 Depth : 35 mm  
 Antenna Type : Whip  
 Orientation : Touch  
 Power Drift-Start : 3.090 W/kg  
 Power Drift-Finish: 2.961 W/kg  
 Power Drift (%) : -4.175  
 Picture : C:\Alsas\bitmap\Device-15.bmp

Phantom Data

Name : APREL-Uni  
 Type : Uni-Phantom  
 Size (mm) : 280 x 280 x 200  
 Serial No. : System Default  
 Location : Center  
 Description : Default

Tissue Data

Type : HEAD  
 Serial No. : 450H  
 Frequency : 440.00 MHz  
 Last Calib. Date : 02-Nov-2015  
 Temperature : 21.50 °C  
 Ambient Temp. : 22.00 °C  
 Humidity : 39.00 RH%  
 Epsilon : 42.69 F/m  
 Sigma : 0.88 S/m  
 Density : 1000.00 kg/cu. m

Probe Data

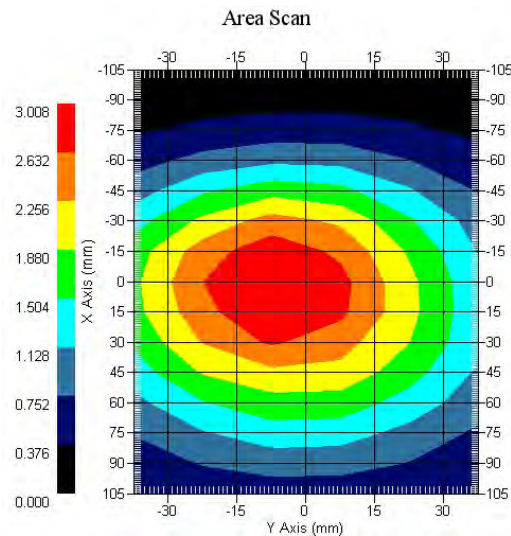
Name : E-Field  
 Model : E-020  
 Type : E-Field Triangle  
 Serial No. : 271\_CW  
 Last Calib. Date : 26-Aug-2015  
 Frequency : 450.00 MHz  
 Duty Cycle Factor: 1  
 Conversion Factor: 6.1  
 Probe Sensitivity: 1.20 1.20 1.20  $\mu\text{V}/(\text{V}/\text{m})^2$   
 Compression Point: 95.00 mV  
 Offset : 1.56 mm

Measurement Data

Crest Factor : 1  
 Scan Type : Complete  
 Tissue Temp. : 21.50 °C  
 Ambient Temp. : 22.00 °C  
 Set-up Date : 02-Nov-2015  
 Set-up Time : 10:49:00 AM  
 Area Scan : 15x6x1 : Measurement x=15mm, y=15mm, z=4mm  
 Zoom Scan : 7x7x7 : Measurement x=5mm, y=5mm, z=5mm

Other Data

DUT Position : Touch  
 Separation : 25  
 Channel : High



1 gram SAR value : 2.942 W/kg  
 10 gram SAR value : 2.284 W/kg  
 Area Scan Peak SAR : 3.005 W/kg  
 Zoom Scan Peak SAR : 3.833 W/kg

No	Mode	Freq.	CH	Test Position	NOTE
2	Digital	406.1125	Low	Face-up	Ant A (HW-423W-CT405)

Report Date : 02-Nov-2015  
 By Operator : 123  
 Measurement Date : 02-Nov-2015  
 Starting Time : 02-Nov-2015 11:38:01 AM  
 End Time : 02-Nov-2015 12:09:57 PM  
 Scanning Time : 1916 secs

Product Data  
 Device Name : SamYoungTech. Co., Ltd  
 Serial No. : Proto type  
 Type : Other  
 Model : SY4050-LM  
 Frequency : 406.10 MHz  
 Max. Transmit Pwr : 5 W  
 Drift Time : 10 min(s)  
 Length : 105 mm  
 Width : 55 mm  
 Depth : 35 mm  
 Antenna Type : Whip  
 Orientation : Touch  
 Power Drift-Start : 5.294 W/kg  
 Power Drift-Finish: 5.031 W/kg  
 Power Drift (%) : -4.968  
 Picture : C:\Alsas\bitmap\Device-15.bmp

Phantom Data  
 Name : APREL-Uni  
 Type : Uni-Phantom  
 Size (mm) : 280 x 280 x 200  
 Serial No. : System Default  
 Location : Center  
 Description : Default

Tissue Data  
 Type : HEAD  
 Serial No. : 450H  
 Frequency : 450.00 MHz  
 Last Calib. Date : 02-Nov-2015  
 Temperature : 21.50 °C  
 Ambient Temp. : 22.00 °C  
 Humidity : 38.00 RH%  
 Epsilon : 42.84 F/m  
 Sigma : 0.89 S/m  
 Density : 1000.00 kg/cu. m

Probe Data

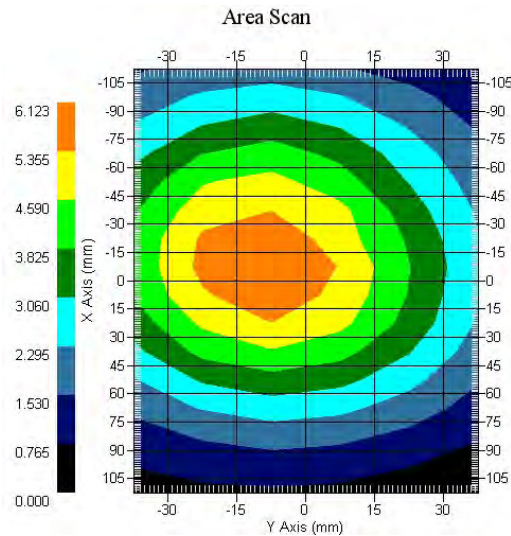
Name : E-Field  
 Model : E-020  
 Type : E-Field Triangle  
 Serial No. : 271\_CW  
 Last Calib. Date : 28-Aug-2015  
 Frequency : 450.00 MHz  
 Duty Cycle Factor: 1  
 Conversion Factor: 6.1  
 Probe Sensitivity: 1.20 1.20 1.20  $\mu\text{V}/(\text{V}/\text{m})^2$   
 Compression Point: 95.00 mV  
 Offset : 1.56 mm

Measurement Data

Crest Factor : 1  
 Scan Type : Complete  
 Tissue Temp. : 21.50 °C  
 Ambient Temp. : 22.00 °C  
 Set-up Date : 02-Nov-2015  
 Set-up Time : 10:49:00 AM  
 Area Scan : 16x6x1 : Measurement x=15mm, y=15mm, z=4mm  
 Zoom Scan : 7x7x7 : Measurement x=5mm, y=5mm, z=5mm

Other Data

DUT Position : Touch  
 Separation : 25  
 Channel : Low



1 gram SAR value : 5.445 W/kg  
 10 gram SAR value : 3.999 W/kg  
 Area Scan Peak SAR : 6.123 W/kg  
 Zoom Scan Peak SAR : 7.226 W/kg

No	Mode	Freq.	CH	Test Position	NOTE
3	Analog	440.0000	High	Face-up	Ant B (HW-423H-CT405)

Report Date : 02-Nov-2015  
 By Operator : Miyoung.Lee  
 Measurement Date : 02-Nov-2015  
 Starting Time : 02-Nov-2015 03:44:31 PM  
 End Time : 02-Nov-2015 04:16:47 PM  
 Scanning Time : 1936 secs

Product Data  
 Device Name : SamYoungTech. Co., Ltd  
 Serial No. : Proto type  
 Type : Other  
 Model : SY4050-IM  
 Frequency : 440.00 MHz  
 Max. Transmit Pwr : 5 W  
 Drift Time : 10 min(s)  
 Length : 115 mm  
 Width : 52 mm  
 Depth : 35 mm  
 Antenna Type : Whip  
 Orientation : Touch  
 Power Drift-Start : 3.639 W/kg  
 Power Drift-Finish: 3.478 W/kg  
 Power Drift (%) : -4.424  
 Picture : C:\Alsas\bitmap\Device-15.bmp

Phantom Data  
 Name : APREL-Uni  
 Type : Uni-Phantom  
 Size (mm) : 280 x 280 x 200  
 Serial No. : System Default  
 Location : Center  
 Description : Default

Tissue Data  
 Type : HEAD  
 Serial No. : 450H  
 Frequency : 440.00 MHz  
 Last Calib. Date : 02-Nov-2015  
 Temperature : 21.50 °C  
 Ambient Temp. : 22.00 °C  
 Humidity : 39.00 RH%  
 Epsilon : 42.69 F/m  
 Sigma : 0.88 S/m  
 Density : 1000.00 kg/cu. m



Probe Data

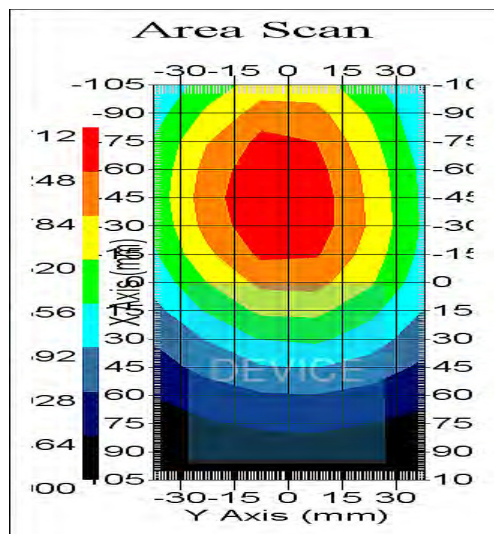
Name : E-Field  
 Model : E-020  
 Type : E-Field Triangle  
 Serial No. : 271\_CW  
 Last Calib. Date : 26-Aug-2015  
 Frequency : 450.00 MHz  
 Duty Cycle Factor: 1  
 Conversion Factor: 6.1  
 Probe Sensitivity: 1.20 1.20 1.20  $\mu\text{V}/(\text{V}/\text{m})^2$   
 Compression Point: 95.00 mV  
 Offset : 1.56 mm

Measurement Data

Crest Factor : 1  
 Scan Type : Complete  
 Tissue Temp. : 21.50 °C  
 Ambient Temp. : 22.00 °C  
 Set-up Date : 02-Nov-2015  
 Set-up Time : 10:49:00 AM  
 Area Scan : 15x6x1 : Measurement x=15mm, y=15mm, z=4mm  
 Zoom Scan : 7x7x7 : Measurement x=5mm, y=5mm, z=5mm

Other Data

DUT Position : Touch  
 Separation : 25  
 Channel : High



1 gram SAR value : 3.417 W/kg  
 10 gram SAR value : 2.427 W/kg  
 Area Scan Peak SAR : 3.712 W/kg  
 Zoom Scan Peak SAR : 4.624 W/kg

No	Mode	Freq.	CH	Test Position	NOTE
4	Digital	406.1	Low	Face-up	Ant B (HW-423H-CT405)

Report Date : 02-Nov-2015  
 By Operator : 123  
 Measurement Date : 02-Nov-2015  
 Starting Time : 02-Nov-2015 01:43:57 PM  
 End Time : 02-Nov-2015 02:16:39 PM  
 Scanning Time : 1962 secs

**Product Data**

Device Name : SamYoungTech. Co., Ltd  
 Serial No. : Proto type  
 Type : Other  
 Model : SY4050-IM  
 Frequency : 406.10 MHz  
 Max. Transmit Pwr : 5 W  
 Drift Time : 10 min(s)  
 Length : 105 mm  
 Width : 55 mm  
 Depth : 35 mm  
 Antenna Type : Whip  
 Orientation : Touch  
 Power Drift-Start : 5.787 W/kg  
 Power Drift-Finish: 5.512 W/kg  
 Power Drift (%) : -4.752  
 Picture : C:\Alsas\bitmap\Device-15.bmp

**Phantom Data**

Name : APREL-Uni  
 Type : Uni-Phantom  
 Size (mm) : 280 x 280 x 200  
 Serial No. : System Default  
 Location : Center  
 Description : Default

**Tissue Data**

Type : HEAD  
 Serial No. : 450H  
 Frequency : 450.00 MHz  
 Last Calib. Date : 02-Nov-2015  
 Temperature : 21.50 °C  
 Ambient Temp. : 22.00 °C  
 Humidity : 38.00 RH%  
 Epsilon : 42.84 F/m  
 Sigma : 0.89 S/m  
 Density : 1000.00 kg/cu. m

Probe Data

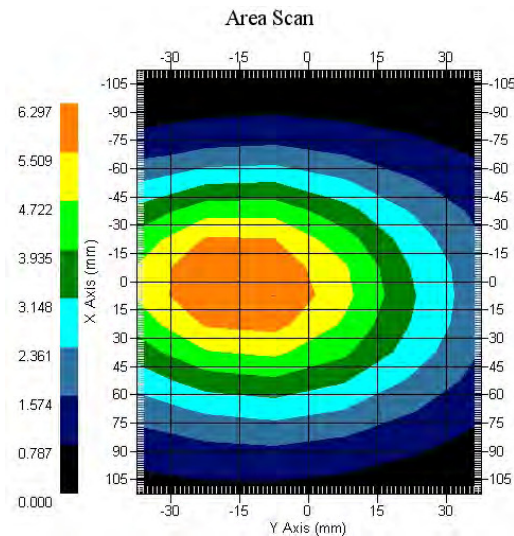
Name : E-Field  
 Model : E-020  
 Type : E-Field Triangle  
 Serial No. : 271\_CW  
 Last Calib. Date : 28-Aug-2015  
 Frequency : 450.00 MHz  
 Duty Cycle Factor: 1  
 Conversion Factor: 6.1  
 Probe Sensitivity: 1.20 1.20 1.20  $\mu\text{V}/(\text{V}/\text{m})^2$   
 Compression Point: 95.00 mV  
 Offset : 1.56 mm

Measurement Data

Crest Factor : 1  
 Scan Type : Complete  
 Tissue Temp. : 21.50 °C  
 Ambient Temp. : 22.00 °C  
 Set-up Date : 02-Nov-2015  
 Set-up Time : 10:49:00 AM  
 Area Scan : 16x6x1 : Measurement x=15mm, y=15mm, z=4mm  
 Zoom Scan : 7x7x7 : Measurement x=5mm, y=5mm, z=5mm

Other Data

DUT Position : Touch  
 Separation : 25  
 Channel : Low



1 gram SAR value : 5.982 W/kg  
 10 gram SAR value : 4.337 W/kg  
 Area Scan Peak SAR : 6.297 W/kg  
 Zoom Scan Peak SAR : 8.007 W/kg

No	Mode	Freq.	CH	Test Position	NOTE
5	Analog	440.0000	High	Body-worn	Ant A (HW-423W-CT405)

Report Date : 02-Nov-2015  
 By Operator : Miyoung.Lee  
 Measurement Date : 02-Nov-2015  
 Starting Time : 02-Nov-2015 07:22:59 PM  
 End Time : 02-Nov-2015 07:54:19 PM  
 Scanning Time : 1880 secs

Product Data  
 Device Name : SamYoungTech. Co., Ltd  
 Serial No. : Proto type  
 Type : Other  
 Model : SY4050-IM  
 Frequency : 440.00 MHz  
 Max. Transmit Pwr : 5 W  
 Drift Time : 10 min(s)  
 Length : 115 mm  
 Width : 52 mm  
 Depth : 35 mm  
 Antenna Type : Whip  
 Orientation : Touch  
 Power Drift-Start : 3.054 W/kg  
 Power Drift-Finish: 2.932 W/kg  
 Power Drift (%) : -3.995  
 Picture : C:\Alsas\bitmap\Device-15.bmp

Phantom Data  
 Name : APREL-Uni  
 Type : Uni-Phantom  
 Size (mm) : 280 x 280 x 200  
 Serial No. : System Default  
 Location : Center  
 Description : Default

Tissue Data  
 Type : BODY  
 Serial No. : 450B  
 Frequency : 440.00 MHz  
 Last Calib. Date : 02-Nov-2015  
 Temperature : 21.50 °C  
 Ambient Temp. : 22.00 °C  
 Humidity : 39.00 RH%  
 Epsilon : 56.99 F/m  
 Sigma : 0.93 S/m  
 Density : 1000.00 kg/cu. m

Probe Data

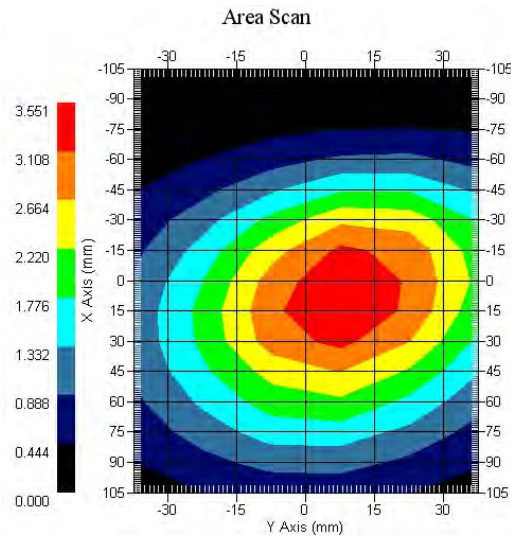
Name : E-Field  
 Model : E-020  
 Type : E-Field Triangle  
 Serial No. : 271\_CW  
 Last Calib. Date : 28-Aug-2015  
 Frequency : 450.00 MHz  
 Duty Cycle Factor: 1  
 Conversion Factor: 6.3  
 Probe Sensitivity: 1.20 1.20 1.20  $\mu\text{V}/(\text{V}/\text{m})^2$   
 Compression Point: 95.00 mV  
 Offset : 1.56 mm

Measurement Data

Crest Factor : 1  
 Scan Type : Complete  
 Tissue Temp. : 21.50 °C  
 Ambient Temp. : 22.00 °C  
 Set-up Date : 02-Nov-2015  
 Set-up Time : 06:38:34 PM  
 Area Scan : 15x6x1 : Measurement x=15mm, y=15mm, z=4mm  
 Zoom Scan : 7x7x7 : Measurement x=5mm, y=5mm, z=5mm

Other Data

DUT Position : Touch  
 Separation : 0  
 Channel : High



1 gram SAR value : 3.302 W/kg  
 10 gram SAR value : 2.281 W/kg  
 Area Scan Peak SAR : 3.551 W/kg  
 Zoom Scan Peak SAR : 4.474 W/kg

No	Mode	Freq.	CH	Test Position	NOTE
6	Digital	406.1	Low	Body-worn	Ant A (HW-423W-CT405)

Report Date : 02-Nov-2015  
 By Operator : 123  
 Measurement Date : 02-Nov-2015  
 Starting Time : 02-Nov-2015 11:11:09 AM  
 End Time : 02-Nov-2015 11:42:55 AM  
 Scanning Time : 1906 secs

Product Data

Device Name : SamYoungTech. Co., Ltd  
 Serial No. : Proto type  
 Type : Other  
 Model : SY4050-LM  
 Frequency : 406.10 MHz  
 Max. Transmit Pwr : 5 W  
 Drift Time : 10 min(s)  
 Length : 105 mm  
 Width : 55 mm  
 Depth : 35 mm  
 Antenna Type : Whip  
 Orientation : Touch  
 Power Drift-Start : 5.346 W/kg  
 Power Drift-Finish: 5.130 W/kg  
 Power Drift (%) : -4.040  
 Picture : C:\Alsas\bitmap\Device-15.bmp

Phantom Data

Name : APREL-Uni  
 Type : Uni-Phantom  
 Size (mm) : 280 x 280 x 200  
 Serial No. : System Default  
 Location : Center  
 Description : Default

Tissue Data

Type : BODY  
 Serial No. : 450B  
 Frequency : 406.10 MHz  
 Last Calib. Date : 02-Nov-2015  
 Temperature : 21.50 °C  
 Ambient Temp. : 22.00 °C  
 Humidity : 42.00 RH%  
 Epsilon : 57.33 F/m  
 Sigma : 0.90 S/m  
 Density : 1000.00 kg/cu. m

Probe Data

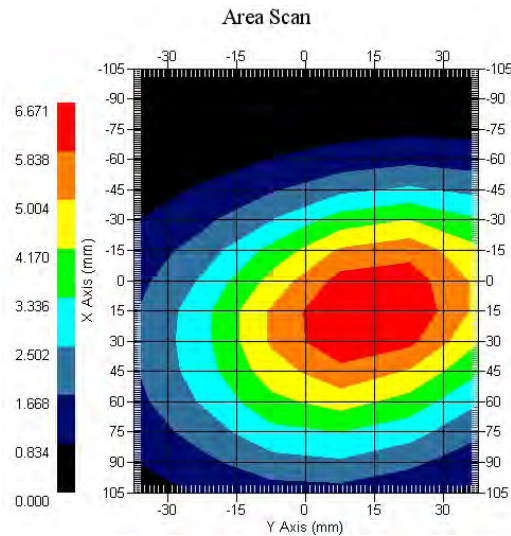
Name : E-Field  
 Model : E-020  
 Type : E-Field Triangle  
 Serial No. : 271\_CW  
 Last Calib. Date : 28-Aug-2015  
 Frequency : 450.00 MHz  
 Duty Cycle Factor: 1  
 Conversion Factor: 6.3  
 Probe Sensitivity: 1.20 1.20 1.20  $\mu\text{V}/(\text{V}/\text{m})^2$   
 Compression Point: 95.00 mV  
 Offset : 1.56 mm

Measurement Data

Crest Factor : 1  
 Scan Type : Complete  
 Tissue Temp. : 21.50 °C  
 Ambient Temp. : 22.00 °C  
 Set-up Date : 02-Nov-2015  
 Set-up Time : 9:27:12 AM  
 Area Scan : 15x6x1 : Measurement x=15mm, y=15mm, z=4mm  
 Zoom Scan : 7x7x7 : Measurement x=5mm, y=5mm, z=5mm

Other Data

DUT Position : Touch  
 Separation : 0  
 Channel : Low



1 gram SAR value : 6.272 W/kg  
 10 gram SAR value : 4.530 W/kg  
 Area Scan Peak SAR : 6.671 W/kg  
 Zoom Scan Peak SAR : 8.357 W/kg

No	Mode	Freq.	CH	Test Position	NOTE
7	Analog	440.0000	High	Body-worn	Ant B (HW-423H-CT405)

Report Date : 02-Nov-2015  
 By Operator : Miyoung.Lee  
 Measurement Date : 02-Nov-2015  
 Starting Time : 02-Nov-2015 06:45:31 PM  
 End Time : 02-Nov-2015 07:17:17 PM  
 Scanning Time : 1906 secs

Product Data  
 Device Name : SamYoungTech. Co., Ltd  
 Serial No. : Proto type  
 Type : Other  
 Model : SY4050-IM  
 Frequency : 440.00 MHz  
 Max. Transmit Pwr : 5 W  
 Drift Time : 10 min(s)  
 Length : 115 mm  
 Width : 52 mm  
 Depth : 35 mm  
 Antenna Type : Whip  
 Orientation : Touch  
 Power Drift-Start : 3.812 W/kg  
 Power Drift-Finish: 3.661 W/kg  
 Power Drift (%) : -3.961  
 Picture : C:\Alsas\bitmap\Device-15.bmp

Phantom Data  
 Name : APREL-Uni  
 Type : Uni-Phantom  
 Size (mm) : 280 x 280 x 200  
 Serial No. : System Default  
 Location : Center  
 Description : Default

Tissue Data  
 Type : BODY  
 Serial No. : 450B  
 Frequency : 440.00 MHz  
 Last Calib. Date : 02-Nov-2015  
 Temperature : 21.50 °C  
 Ambient Temp. : 22.00 °C  
 Humidity : 39.00 RH%  
 Epsilon : 56.99 F/m  
 Sigma : 0.93 S/m  
 Density : 1000.00 kg/cu. m



Probe Data

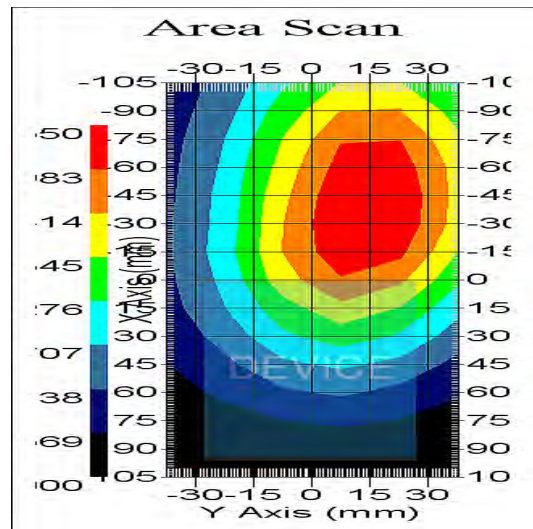
Name : E-Field  
 Model : E-020  
 Type : E-Field Triangle  
 Serial No. : 271\_CW  
 Last Calib. Date : 28-Aug-2015  
 Frequency : 450.00 MHz  
 Duty Cycle Factor: 1  
 Conversion Factor: 6.3  
 Probe Sensitivity: 1.20 1.20 1.20  $\mu\text{V}/(\text{V}/\text{m})^2$   
 Compression Point: 95.00 mV  
 Offset : 1.56 mm

Measurement Data

Crest Factor : 1  
 Scan Type : Complete  
 Tissue Temp. : 21.50 °C  
 Ambient Temp. : 22.00 °C  
 Set-up Date : 02-Nov-2015  
 Set-up Time : 06:38:34 PM  
 Area Scan : 15x6x1 : Measurement x=15mm, y=15mm, z=4mm  
 Zoom Scan : 7x7x7 : Measurement x=5mm, y=5mm, z=5mm

Other Data

DUT Position : Touch  
 Separation : 0  
 Channel : High



1 gram SAR value : 4.077 W/kg  
 10 gram SAR value : 2.828 W/kg  
 Area Scan Peak SAR : 4.550 W/kg  
 Zoom Scan Peak SAR : 5.665 W/kg

No	Mode	Freq.	CH	Test Position	NOTE
8	Digital	406.1	Low	Body-worn	Ant B (HW-423H-CT405)

Report Date : 02-Nov-2015  
 By Operator : 123  
 Measurement Date : 02-Nov-2015  
 Starting Time : 02-Nov-2015 01:30:22 PM  
 End Time : 02-Nov-2015 01:02:18 PM  
 Scanning Time : 1916 secs

Product Data

Device Name : SamYoungTech. Co., Ltd  
 Serial No. : Proto type  
 Type : Other  
 Model : SY4050-LM  
 Frequency : 400.00 MHz  
 Max. Transmit Pwr : 5 W  
 Drift Time : 10 min(s)  
 Length : 105 mm  
 Width : 55 mm  
 Depth : 35 mm  
 Antenna Type : Whip  
 Orientation : Touch  
 Power Drift-Start : 3.985 W/kg  
 Power Drift-Finish: 3.820 W/kg  
 Power Drift (%) : -4.141  
 Picture : C:\Alsas\bitmap\Device-15.bmp

Phantom Data

Name : APREL-Uni  
 Type : Uni-Phantom  
 Size (mm) : 280 x 280 x 200  
 Serial No. : System Default  
 Location : Center  
 Description : Default

Tissue Data

Type : BODY  
 Serial No. : 450B  
 Frequency : 406.10 MHz  
 Last Calib. Date : 02-Nov-2015  
 Temperature : 21.50 °C  
 Ambient Temp. : 22.00 °C  
 Humidity : 42.00 RH%  
 Epsilon : 57.33 F/m  
 Sigma : 0.90 S/m  
 Density : 1000.00 kg/cu. m

Probe Data

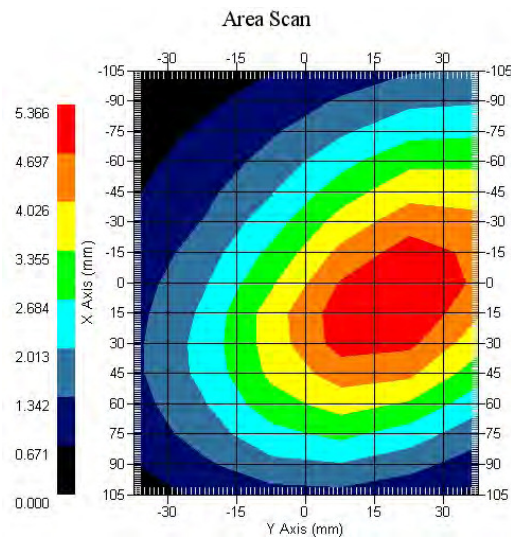
Name : E-Field  
 Model : E-020  
 Type : E-Field Triangle  
 Serial No. : 271\_CW  
 Last Calib. Date : 28-Aug-2015  
 Frequency : 450.00 MHz  
 Duty Cycle Factor: 1  
 Conversion Factor: 6.3  
 Probe Sensitivity: 1.20 1.20 1.20  $\mu\text{V}/(\text{V}/\text{m})^2$   
 Compression Point: 95.00 mV  
 Offset : 1.56 mm

Measurement Data

Crest Factor : 1  
 Scan Type : Complete  
 Tissue Temp. : 21.50 °C  
 Ambient Temp. : 22.00 °C  
 Set-up Date : 02-Nov-2015  
 Set-up Time : 9:27:12 AM  
 Area Scan : 15x6x1 : Measurement x=15mm, y=15mm, z=4mm  
 Zoom Scan : 7x7x7 : Measurement x=5mm, y=5mm, z=5mm

Other Data

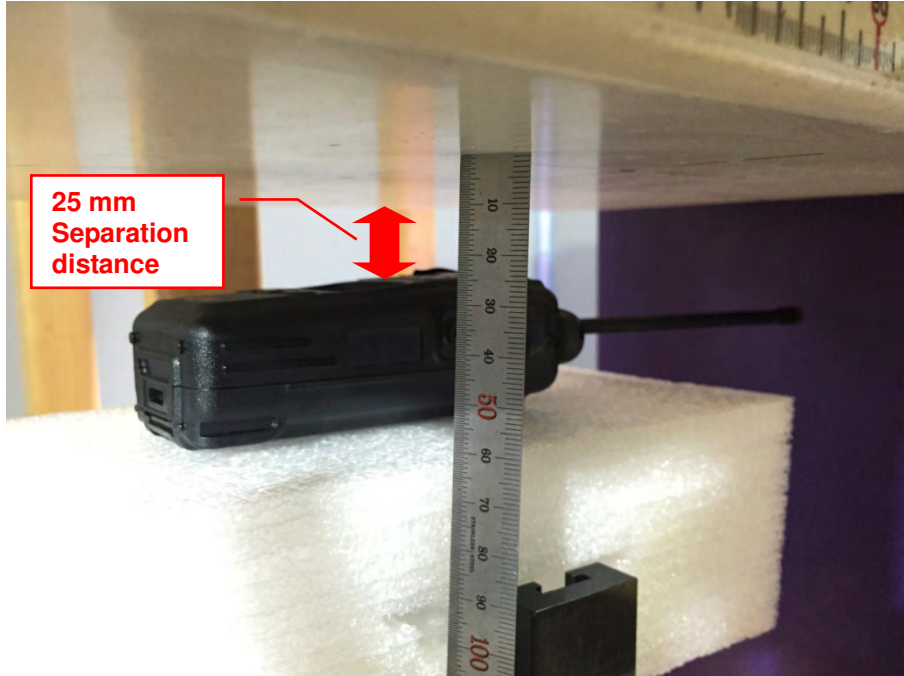
DUT Position : Touch  
 Separation : 0  
 Channel : Low



1 gram SAR value : 4.689 W/kg  
 10 gram SAR value : 3.443 W/kg  
 Area Scan Peak SAR : 5.366 W/kg  
 Zoom Scan Peak SAR : 6.145 W/kg

## Appendix D: DUT setup photos

### Face held configuration



### Body worn configuration





**Appendix E: System Certificate & calibration**

E-1: Probe Calibration

**NCL CALIBRATION LABORATORIES**

Calibration File No.: PC-1648

Task No: 5799

**C E R T I F I C A T E   O F   C A L I B R A T I O N**

It is certified that the equipment identified below has been calibrated in the  
**NCL CALIBRATION LABORATORIES** by qualified personnel following recognized  
procedures and using transfer standards traceable to NRC/NIST.

Equipment: Miniature Isotropic RF Probe

Record of Calibration

Head and Body

Manufacturer: APREL Inc.

**Model No.:** ALS-E020

**Serial No.:** 500-00271

**Calibration Procedure:** D01-032-E020-V2, D22-012-Tissue, D28-002-Dipole  
**Project No:** 5799

**Calibrated:** 26<sup>th</sup> August 2015  
**Released on:** 27<sup>th</sup> August 2015

This Calibration Certificate is Incomplete Unless Accompanied with the Calibration Results Summary

Released By: \_\_\_\_\_

Art Brennan, Quality Manager

**NCL CALIBRATION LABORATORIES**

Suite 102, 303 Terry Fox Dr,  
OTTAWA, ONTARIO  
CANADA K2K 3J1

Division of APREL Lab.  
TEL: (613) 435-8300  
FAX: (613) 435-8306



## **NCL Calibration Laboratories**

Division of APREL Inc.

### **Introduction**

This Calibration Report reproduces the results of the calibration performed in line with the references listed below. Calibration is performed using accepted methodologies as per the references listed below. Probes are calibrated for air, and tissue and the values reported are the results from the physical quantification.

### **Calibration Method**

Probes are calibrated using the following methods.

<800 MHz

TEM Cell for sensitivity in air

Standard phantom using temperature transfer method for sensitivity in tissue

>800 MHz

Waveguide\* method to determine sensitivity in air and tissue

\*Waveguide is numerically (simulation) assessed to determine the field distribution and power

The boundary effect for the probe is assessed using a standard flat phantom where the probe output is compared against a numerically simulated series of data points

### **References**

- IEEE Standard 1528:2013  
IEEE Recommended Practice for Determining the Peak Spatial-Average Specific Absorption Rate (SAR) in the Human Head from Wireless Communications Devices: Measurement Techniques
- IEC 62209-1:2006  
Human Exposure to RF Fields from hand-held and body-mounted wireless communication devices - Human models, instrumentation, and procedures - Part 1: Procedure to measure the Specific Absorption Rate (SAR) for hand-held mobile wireless devices
- IEC 62209-2:2010  
Human exposure to RF fields from hand-held and body-mounted wireless devices - Human models, instrumentation, and procedures - Part 2: specific absorption rate (SAR) for wireless communication devices (30 MHz - 6 GHz)
- TP-D01-032-E020-V2 E-Field probe calibration procedure
- D22-012-Tissue dielectric tissue calibration procedure
- D28-002-Dipole procedure for validation of SAR system using a dipole
- IEEE 1309 Standard for Calibration of Electromagnetic Field Sensors and Probes, Excluding Antennas, from 9kHz to 40GHz



**NCL Calibration Laboratories**

Division of APREL Inc.

**Conditions**

Probe 500-00271 was a recalibration.

**Ambient Temperature of the Laboratory:** 20 °C +/- 1.5°C  
**Temperature of the Tissue:** 21 °C +/- 1.5°C  
**Relative Humidity:** < 60%

**Primary Measurement Standards**

Instrument	Serial Number	Cal due date
Power Meter Tektronix USB	11C940	Apr 2, 2017
Signal Generator Agilent E4438C	MY45094463	Dec 11, 2015

**Secondary Measurement Standards**

Network Analyzer Anritsu 37347C	002106	Feb. 4, 2017
---------------------------------	--------	--------------

**Attestation**

The below named signatories have conducted the calibration and review of the data which is presented in this calibration report.

**We the undersigned attest that to the best of our knowledge the calibration of this subject has been accurately conducted and that all information contained within the results pages have been reviewed for accuracy.**

Art Brennan, Quality Manager

Dan Brooks, Test Engineer

**NCL Calibration Laboratories**

Division of APREL Inc.

**Probe Summary**

<b>Probe Type:</b>	E-Field Probe E020
<b>Serial Number:</b>	500-00271
<b>Frequency:</b>	As presented on page 5
<b>Sensor Offset:</b>	1.56
<b>Sensor Length:</b>	2.5
<b>Tip Enclosure:</b>	Composite*
<b>Tip Diameter:</b>	< 2.9 mm
<b>Tip Length:</b>	55 mm
<b>Total Length:</b>	289 mm

\*Resistive to recommended tissue recipes per IEEE-1528

**Sensitivity in Air**

<b>Channel X:</b>	1.2 $\mu\text{V}/(\text{V}/\text{m})^2$
<b>Channel Y:</b>	1.2 $\mu\text{V}/(\text{V}/\text{m})^2$
<b>Channel Z:</b>	1.2 $\mu\text{V}/(\text{V}/\text{m})^2$
<b>Diode Compression Point:</b>	95 mV





**NCL Calibration Laboratories**

Division of APREL Inc.

Calibration for Tissue (Head H, Body B)

Frequency	Tissue Type	Measured Epsilon	Measured Sigma	Standard Uncertainty (%)	Calibration Frequency Range (MHz)	Conversion Factor
450 H	Head	43.59	0.829	3.5	±50	6.1
450 B	Body	56.15	0.9	3.5	±50	6.3
600 H	Head	44.85	0.843	4.25**page 6	±100	6.2
750 H	Head	X	X	X	X	X
750 B	Body	X	X	X	X	X
835 H	Head	X	X	X	X	X
835 B	Body	X	X	X	X	X
900 H	Head	X	X	X	X	X
900 B	Body	X	X	X	X	X
1450 H	Head	X	X	X	X	X
1450 B	Body	X	X	X	X	X
1500 H	Head	X	X	X	X	X
1500 B	Body	X	X	X	X	X
1640 H	Head	X	X	X	X	X
1640 B	Body	X	X	X	X	X
1750 H	Head	X	X	X	X	X
1750 B	Body	X	X	X	X	X
1800 H	Head	X	X	X	X	X
1800 B	Body	X	X	X	X	X
1900 H	Head	X	X	X	X	X
1900 B	Body	X	X	X	X	X
2000 H	Head	X	X	X	X	X
2000 B	Body	X	X	X	X	X
2100 H	Head	X	X	X	X	X
2100 B	Body	X	X	X	X	X
2300 H	Head	X	X	X	X	X
2300 B	Body	X	X	X	X	X
2450 H	Head	X	X	X	X	X
2450 B	Body	X	X	X	X	X
2600 H	Head	X	X	X	X	X
2600 B	Body	X	X	X	X	X
3000 H	Head	X	X	X	X	X
3000 B	Body	X	X	X	X	X
3600 H	Head	X	X	X	X	X
3600 B	Body	X	X	X	X	X
5200 H	Head	X	X	X	X	X
5300 H	Head	X	X	X	X	X
5600 H	Head	X	X	X	X	X
5800 H	Head	X	X	X	X	X

## **NCL Calibration Laboratories**

Division of APREL Inc.

### **Boundary Effect:**

Uncertainty resulting from the boundary effect is less than 2.1% for the distance between the tip of the probe and the tissue boundary, when less than 0.58mm.

### **Spatial Resolution:**

The spatial resolution uncertainty is less than 1.5% for 4.9mm diameter probe.  
The spatial resolution uncertainty is less than 1.0% for 2.5mm diameter probe.

### **DAQ-PAQ Contribution**

To minimize the uncertainty calculation all tissue sensitivity values were calculated using a load impedance of 5 MΩ.

### **Probe Calibration Uncertainty**

Uncertainty component	Tolerance (± %)	Probability distribution	Divisor	Standard uncertainty (± %)
Incident or forward power	2.5	R	√3	1.44
Reflected power	2	R	√3	1.15
Liquid conductivity measurement	1	R	√3	0.58
Liquid permittivity measurement	1	R	√3	0.58
Liquid conductivity deviation	1.5	R	√3	0.87
Liquid permittivity deviation	1.5	R	√3	0.87
Frequency deviation	2.25	R	√3	1.30
Field homogeneity	2.5	R	√3	1.44
Field-probe positioning	2.5	R	√3	1.44
Field-probe linearity	1.55	R	√3	0.89
<b>Combined standard uncertainty</b>		RSS		<b>3.50</b>

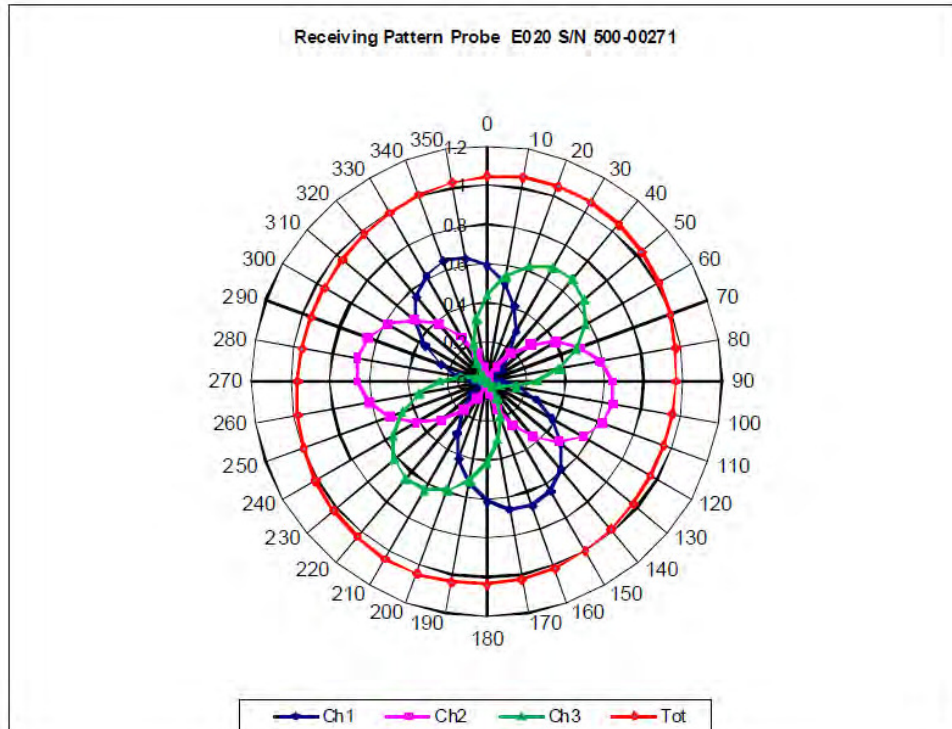
### **\*\* Extended Frequency Range Calibration Uncertainty** **Probe calibration at 600 MHz**

Uncertainty component	Tolerance (± %)	Probability distribution	Divisor	Standard uncertainty (± %)
Incident or forward power	2.5	R	√3	1.44
Reflected power	2	R	√3	1.15
Liquid conductivity measurement	1	R	√3	0.58
Liquid permittivity measurement	1	R	√3	0.58
Liquid conductivity deviation	2.4	R	√3	1.39
Liquid permittivity deviation	1.9	R	√3	1.10
Frequency deviation	4.2	R	√3	2.42
Field homogeneity	2.5	R	√3	1.44
Field-probe positioning	2.5	R	√3	1.44
Field-probe linearity	1.55	R	√3	0.89
<b>Combined standard uncertainty</b>		RSS		<b>4.25</b>

**NCL Calibration Laboratories**

Division of APREL Inc.

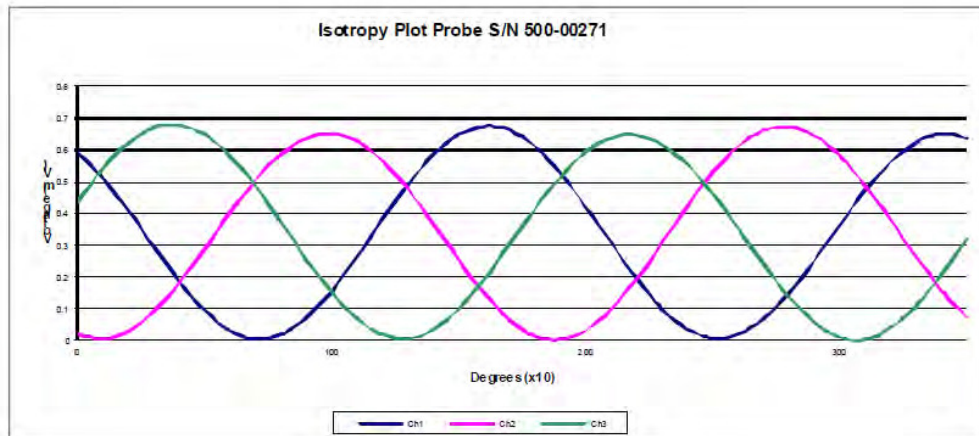
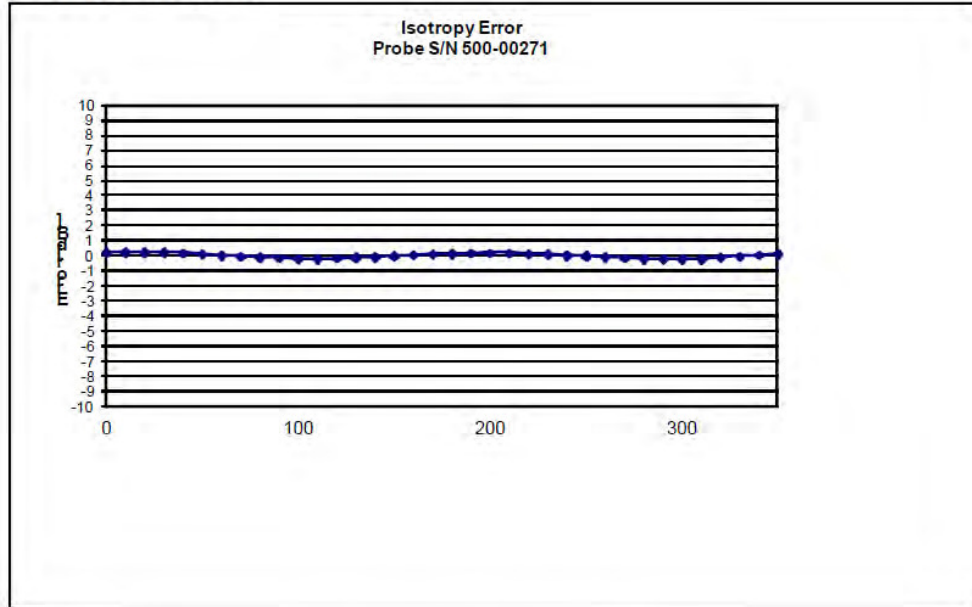
**Receiving Pattern Air**



**NCL Calibration Laboratories**

Division of APREL Inc.

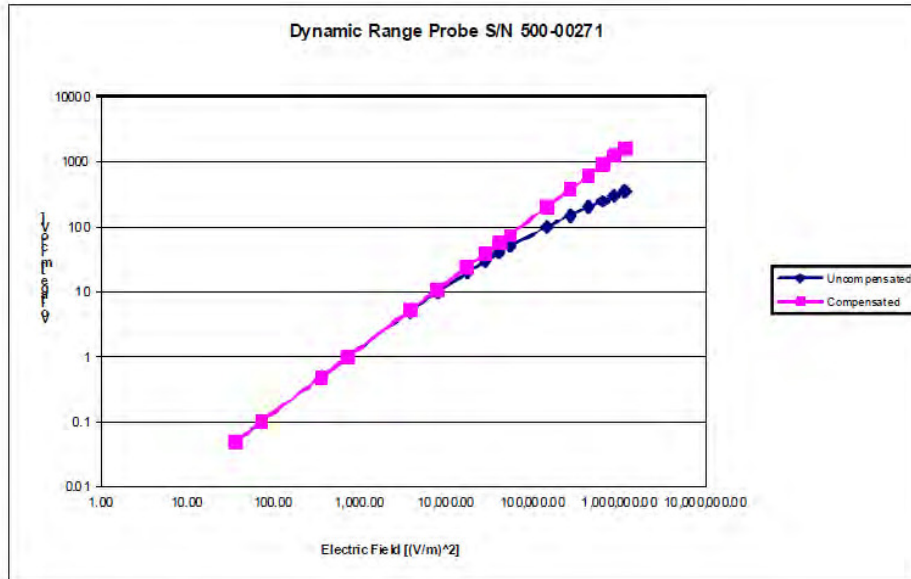
**Isotropy Error Air**



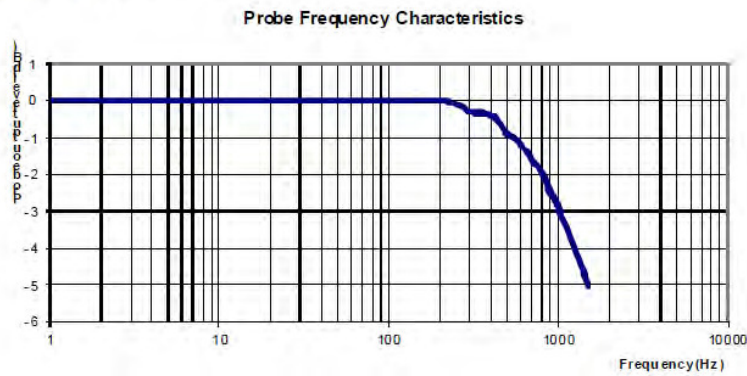
**NCL Calibration Laboratories**

Division of APREL Inc.

**Dynamic Range**



**Video Bandwidth**



**Video Bandwidth at 500 Hz**                      1 dB  
**Video Bandwidth at 1.02 KHz:**                3 dB

E-2: Dipole antenna Calibration (450 Mhz)

## NCL CALIBRATION LABORATORIES

Calibration File No: DC-1650  
Project Number: Kostec-D-cal-5800

# CERTIFICATE OF CALIBRATION

It is certified that the equipment identified below has been calibrated in the  
**NCL CALIBRATION LABORATORIES** by qualified personnel following recognized  
Procedures and using transfer standards traceable to NRC/NIST.

Validation Dipole (Head & Body)

Manufacturer: APREL Laboratories

Part number: ALS-D-450-S-2

Frequency: 450 MHz

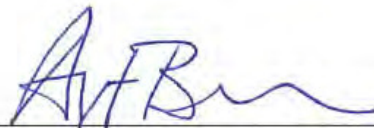
Serial No: 175-00504

Customer: Kostec Co. Ltd.

Calibrated: 28th August 2015  
Released on: 31st August 2015

This Calibration Certificate is Incomplete Unless Accompanied with the Calibration Results Summary

Released By: \_\_\_\_\_



Art Brennan, Quality Manager

### **NCL CALIBRATION LABORATORIES**

Suite 102, 303 Terry Fox Dr.  
Kanata, ONTARIO  
CANADA K2K 3J1

Division of APREL Lab.  
TEL: (613) 435-8300  
FAX: (613) 435-8306



**NCL Calibration Laboratories**

Division of APREL Laboratories.

**Conditions**

Dipole 175-00504 was a re-calibration.

**Ambient Temperature of the Laboratory:** 22 °C +/- 0.5°C  
**Temperature of the Tissue:** 21 °C +/- 0.5°C

**Attestation**

The below named signatories have conducted the calibration and review of the data which is presented in this calibration report.

**We the undersigned attest that to the best of our knowledge the calibration of this subject has been accurately conducted and that all information contained within the results pages have been reviewed for accuracy.**

Art Brennan, Quality Manager

Maryna Nesterova Calibration Engineer

**Primary Measurement Standards**

Instrument	Serial Number	Cal due date
Tektronix USB Power Meter	11C940	Apr. 2, 2017
Network Analyzer Anritsu 37347C	002106	Feb. 4, 2017
Agilent Signal Generator	MY45094463	Dec.11, 2015

This page has been reviewed for content and attested to by signature within this document

**NCL Calibration Laboratories**

Division of APREL Laboratories.

**Calibration Results Summary**

The following results relate the Calibrated Dipole S/N 175-00504 and should be used as a quick reference for the user.

**Mechanical Dimensions**

Length	Height
298.0 mm	166.7 mm

**Electrical Specification 450 MHz**

Tissue Type	Return Loss:	Impedance:	SWR:
Head	-27.351 dB	51.469 $\Omega$	1.106 U
Body	-28.473 dB	47.923 $\Omega$	1.104 U

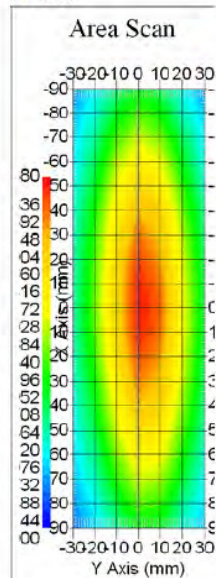
**System Validation Results**

Tissue Type	Frequency	1 Gram SAR	10 Gram SAR
Head	450 MHz	4.65	3.047
Body	450 MHz	4.43	2.997

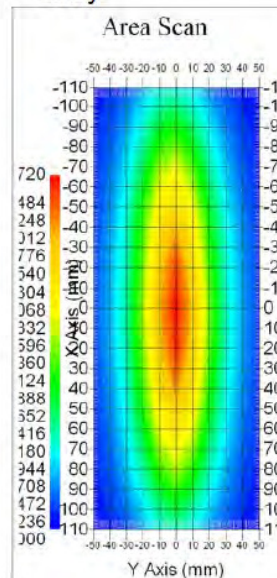
Tissue Type	Measured Epsilon (permittivity)	Measured Sigma (conductivity)
Head	45.58	0.896
Body	56.15	0.9

**835MHz**

**Head**



**Body**



This page has been reviewed for content and attested to by signature within this document



## **NCL Calibration Laboratories**

Division of APREL Laboratories.

### **Introduction**

This Calibration Report has been produced in line with the SSI Dipole Calibration Procedure SSI-TP-018-ALSAS. The results contained within this report are for Validation Dipole 175-00504. The calibration routine consisted of a three-step process. Step 1 was a mechanical verification of the dipole to ensure that it meets the mechanical specifications. Step 2 was an Electrical Calibration for the Validation Dipole, where the SWR, Impedance, and the Return loss were assessed. Step 3 involved a System Validation using the ALSAS-10U, along with APREL E-020 30 MHz to 6 GHz E-Field Probe Serial Number 225 and Flat Phantom

### **References**

- SSI-TP-018-ALSAS Dipole Calibration Procedure
- SSI-TP-016 Tissue Calibration Procedure
- IEEE 1528:2013 "Recommended Practice for Determining the Peak Spatial-Average Specific Absorption Rate (SAR) in the Human Head from Wireless Communications Devices: Measurement Techniques"
- IEC-62209-1:2006 "Human exposure to radio frequency fields from hand-held and body-mounted wireless communication devices – Human models, instrumentation, and procedures"
- Part 1: "Procedure to determine the Specific Absorption Rate (SAR) for hand-held devices used in close proximity of the ear (frequency range of 300 MHz to 3 GHz)"
- IEC-62209-2:2010 "Human exposure to radio frequency fields from hand-held and body-mounted wireless communication devices – Human models, instrumentation, and procedures"
- Part 2: "Procedure to determine the Specific Absorption Rate (SAR) for hand-held devices used in close proximity of the ear (frequency range of 30 MHz to 6 GHz)"
- D28-002 Procedure for validation of SAR system using a dipole

### **Conditions**

**Ambient Temperature of the Laboratory:** 22 °C +/- 0.5°C

**Temperature of the Tissue:** 21 °C +/- 0.5°C

### **Dipole Calibration uncertainty**

The calibration uncertainty for the dipole is made up of various parameters presented below.

<b>Mechanical</b>	1%
<b>Positioning Error</b>	1.22%
<b>Electrical</b>	1.7%
<b>Tissue</b>	2.2%
<b>Dipole Validation</b>	2.2%
<b>TOTAL</b>	<b>8.32% (16.64% K=2)</b>

**NCL Calibration Laboratories**

Division of APREL Laboratories.

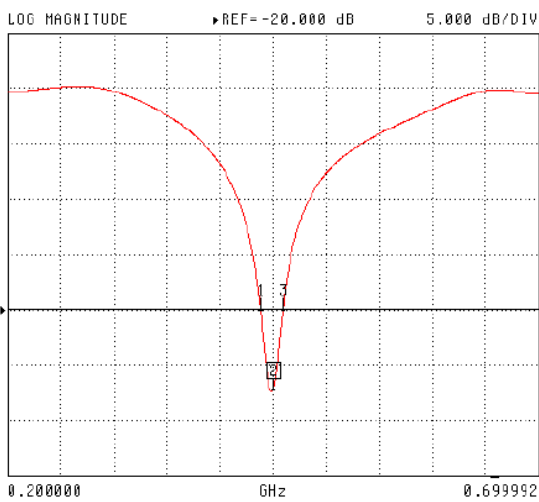
**Electrical Calibration**

**Electrical Specification 450 MHz**

**Forward Reflection**

**Head Tissue: Frequency Range 0.438 GHz to 0.460 GHz**

S11 FORWARD REFLECTION



CH 1 - S11  
 5.0584 mm REF  
 0.000 dB OFFSET  
 0.00° OFFSET

MARKER 2  
 0.450000 GHz  
 -27.351 dB

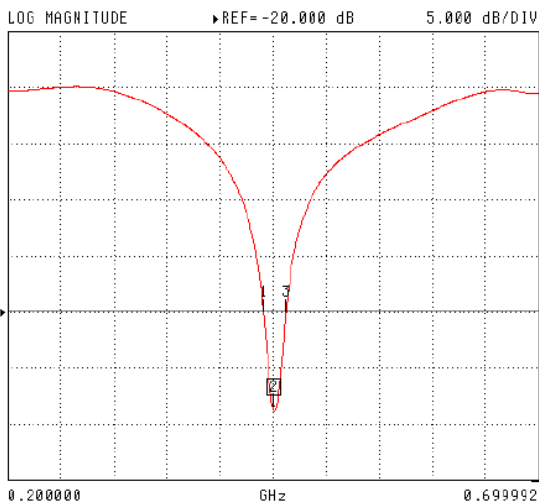
MARKER TO MAX  
 MARKER TO MIN

- 1 0.438600 GHz  
-20.036 dB
- 3 0.459522 GHz  
-20.038 dB

MARKER READOUT  
 FUNCTIONS

**Body Tissue: Frequency Range 0.441 GHz to 0.462 GHz**

S11 FORWARD REFLECTION



CH 1 - S11  
 5.0584 mm REF  
 0.000 dB OFFSET  
 0.00° OFFSET

MARKER 2  
 0.450000 GHz  
 -28.473 dB

MARKER TO MAX  
 MARKER TO MIN

- 1 0.441350 GHz  
-20.002 dB
- 3 0.462372 GHz  
-20.014 dB

MARKER READOUT  
 FUNCTIONS

This page has been reviewed for content and attested to by signature within this document

**NCL Calibration Laboratories**

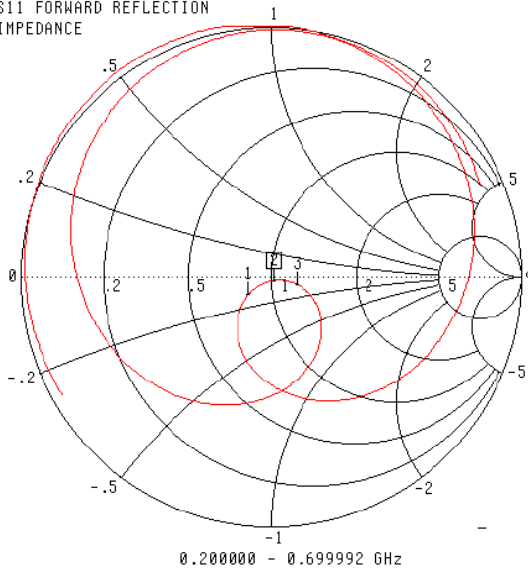
Division of APREL Laboratories.

**Electrical Specification 450 MHz**

**Impedance**

**Head Tissue**

S11 FORWARD REFLECTION  
 IMPEDANCE



CH 1 - S11  
 5.0584 mm REF  
 0.000 dB OFFSET  
 0.00° OFFSET

▶ MARKER 2  
 0.450000 GHz  
 51.469 Ω  
 -1.780 jΩ

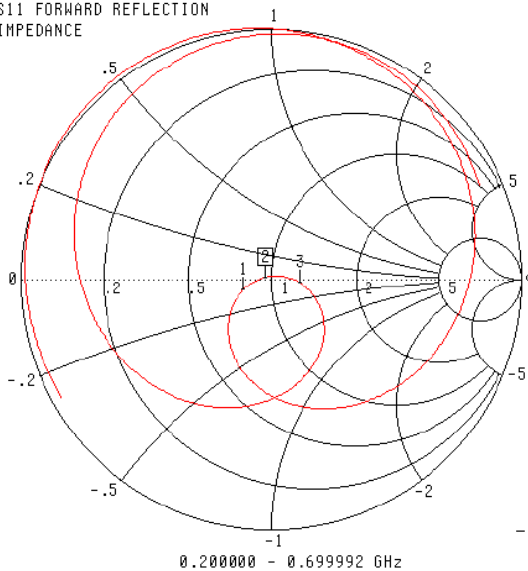
MARKER TO MAX  
 MARKER TO MIN

- 1 0.438600 GHz  
 41.708 Ω  
 -6.132 jΩ
- 3 0.459522 GHz  
 61.783 Ω  
 -4.065 jΩ

MARKER READOUT  
 FUNCTIONS

**Body Tissue**

S11 FORWARD REFLECTION  
 IMPEDANCE



CH 1 - S11  
 5.0584 mm REF  
 0.000 dB OFFSET  
 0.00° OFFSET

▶ MARKER 2  
 0.450000 GHz  
 47.923 Ω  
 449.380 jΩ

MARKER TO MAX  
 MARKER TO MIN

- 1 0.441350 GHz  
 40.224 Ω  
 -3.663 jΩ
- 3 0.462372 GHz  
 62.856 Ω  
 -1.787 jΩ

MARKER READOUT  
 FUNCTIONS

This page has been reviewed for content and attested to by signature within this document

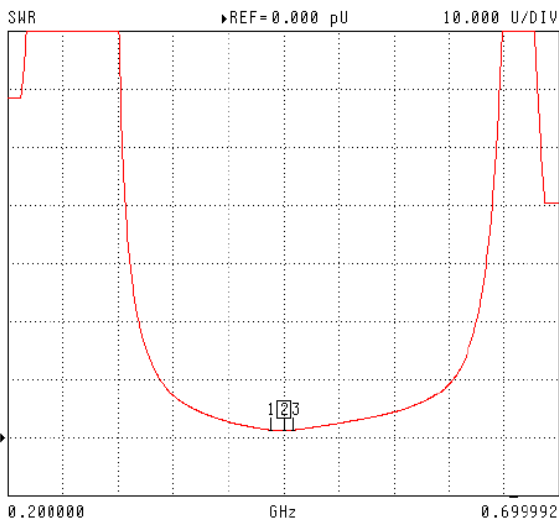
**NCL Calibration Laboratories**

Division of APREL Laboratories.

**Electrical Specification 450 MHz  
 Standing Wave Ratio**

**Head Tissue**

S11 FORWARD REFLECTION



CH 1 - S11  
 5.0584 mm REF  
 0.000 dB OFFSET  
 0.00° OFFSET

▶ MARKER 2  
 0.450000 GHz  
 1.106 U

MARKER TO MAX  
 MARKER TO MIN

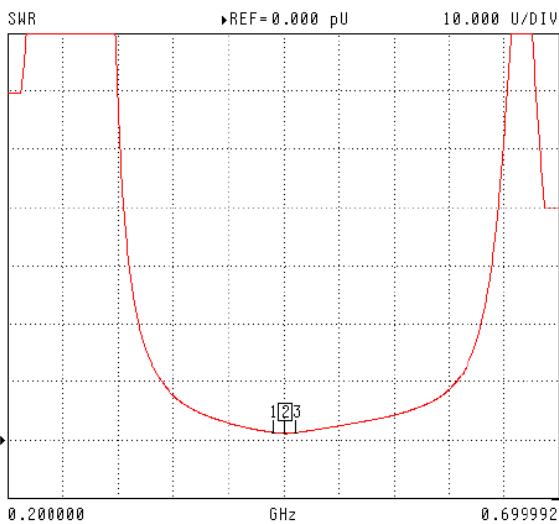
1 0.438600 GHz  
 1.260 U

3 0.459522 GHz  
 1.256 U

MARKER READOUT  
 FUNCTIONS

**Body Tissue**

S11 FORWARD REFLECTION



CH 1 - S11  
 5.0584 mm REF  
 0.000 dB OFFSET  
 0.00° OFFSET

▶ MARKER 2  
 0.450000 GHz  
 1.104 U

MARKER TO MAX  
 MARKER TO MIN

1 0.441350 GHz  
 1.269 U

3 0.462372 GHz  
 1.265 U

MARKER READOUT  
 FUNCTIONS

This page has been reviewed for content and attested to by signature within this document