



# **SMD CERAMIC ANTENNA**

## **Data Sheet**

---

# **HZ3216WA02**

## **CA-2450-31**

For 2400-2484MHz  
**3.2x1.6mm [EIA1206]**

**FEATURES**

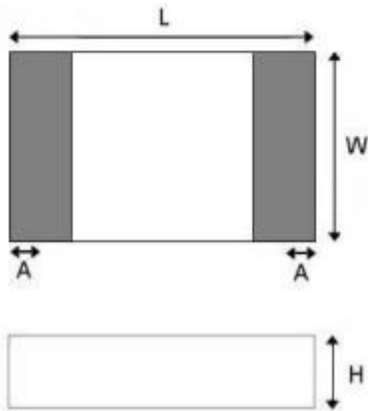
- Light weight,compact
- Wide bandwidth,lowcost
- Built-in antenna with high gain

**APPLICATIONS**

- Bluetooth
- IEEE802.11g/b
- Zigbee systems,etc...



**SHAPES AND DIMENSIONS** Dimensions in mm



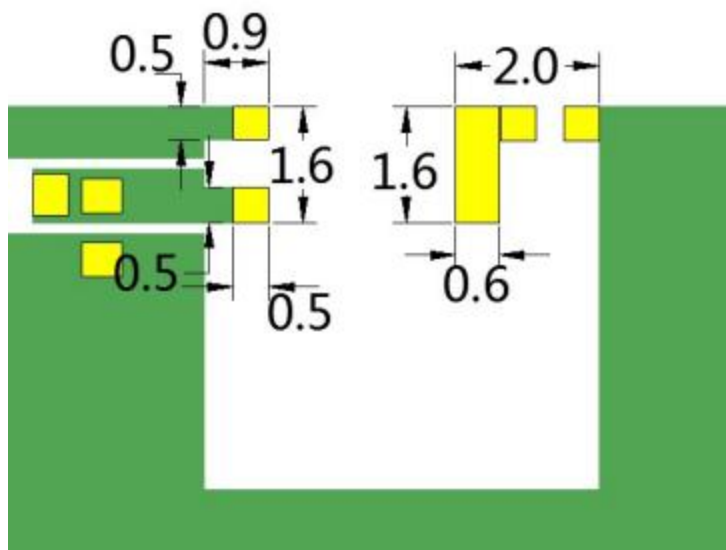
L	W	A	H
3.10±0.10	1.55±0.10	0.40±0.20	0.50±0.10

**ELECTRIC SPECIFICATIONS**

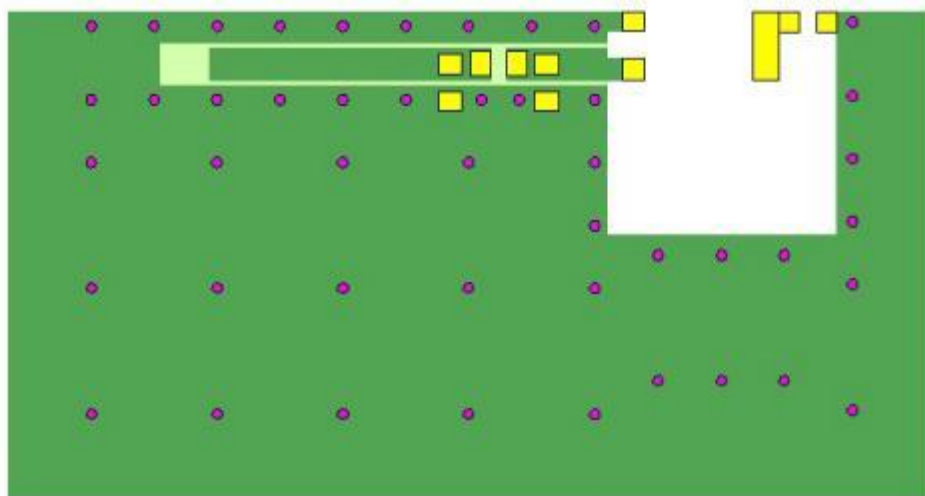
Product type	CA-2450-31
Center Frequency Range	2450MHZ
Input Impedance	50 Ω

**PART NUMBERING SYSTEM**

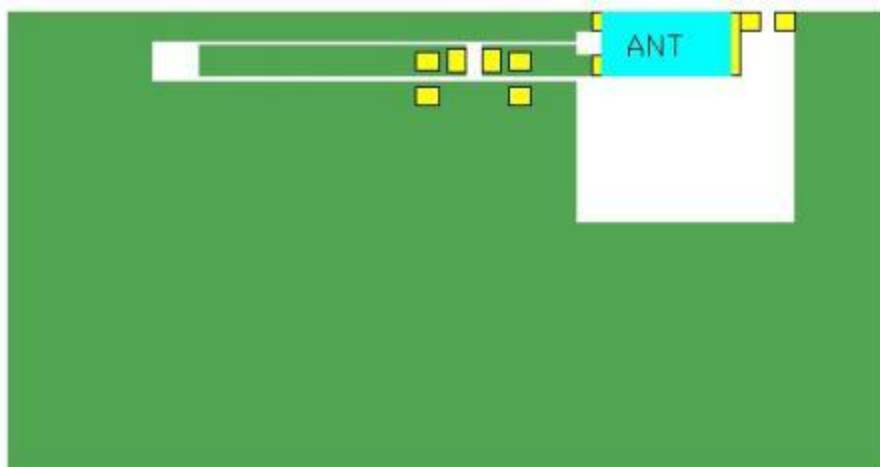
**CA**      -      **2450**      -      **31**  
 Material                  Frequency                  Size



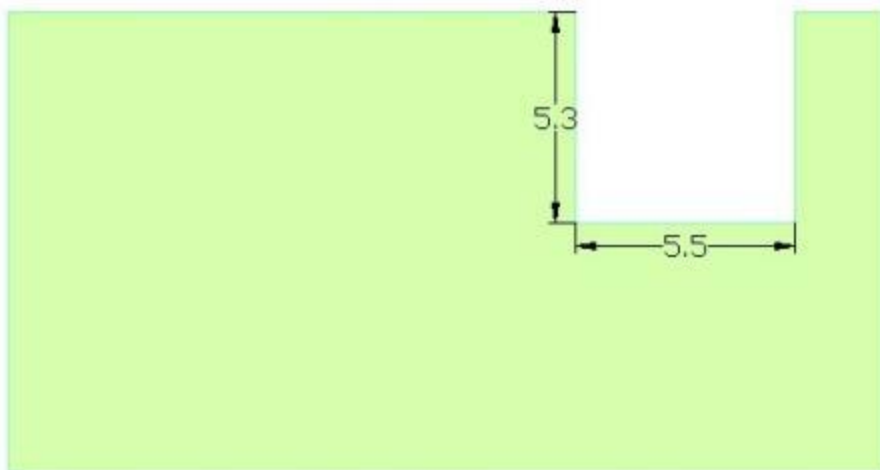
■ EVALUATION BOARD



-  天线
-  PAD
-  底层铺铜
-  顶层铺铜
-  打孔



-  天线
-  PAD
-  底层铺铜
-  顶层铺铜

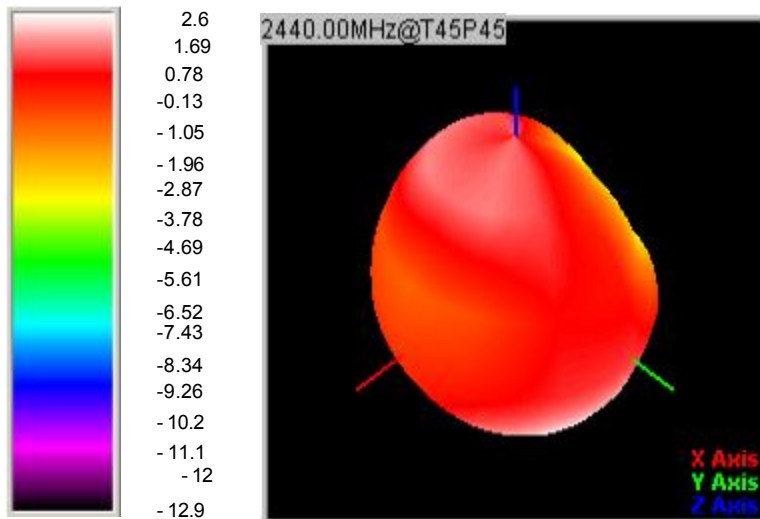
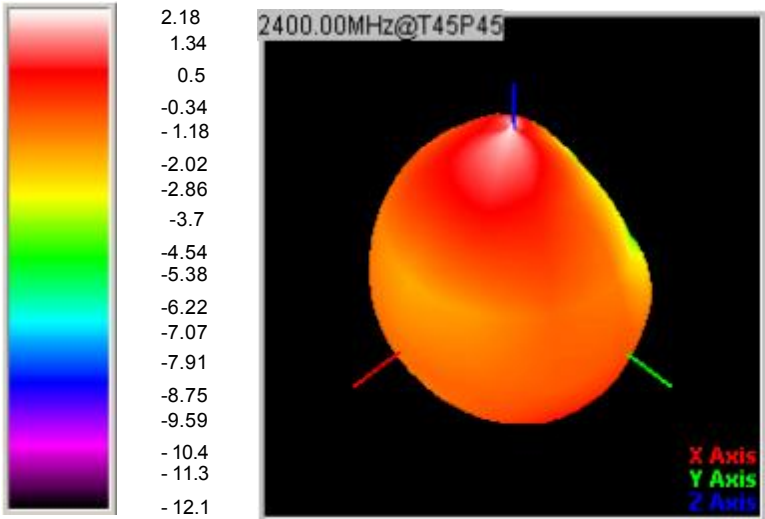


**RADIATION PATTERNS**

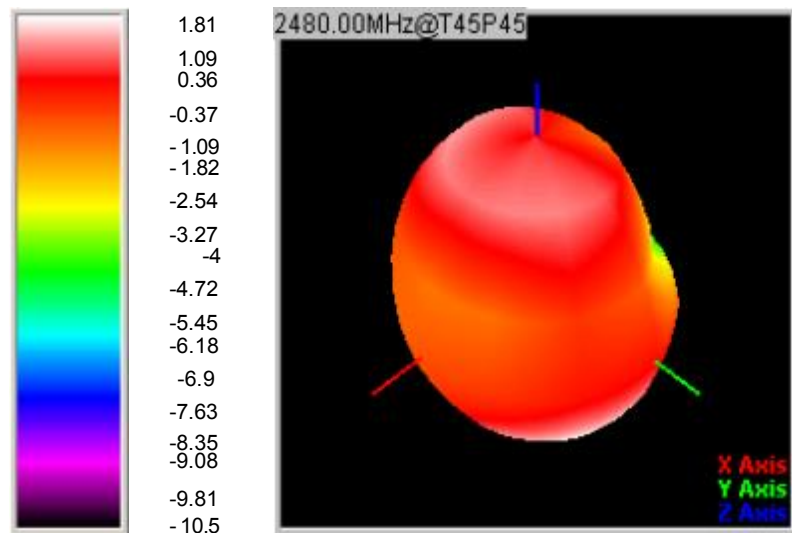
2.4GHz WLAN BAND

3D Gain Pattern (2400 MHz)

3D Gain Pattern (2440 MHz)

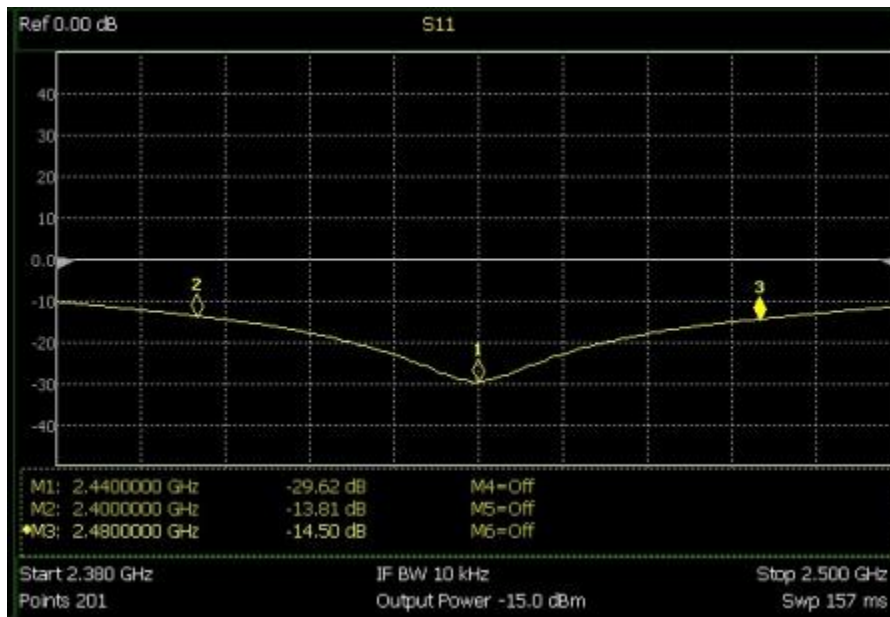


3D Gain Pattern (2480 MHz)

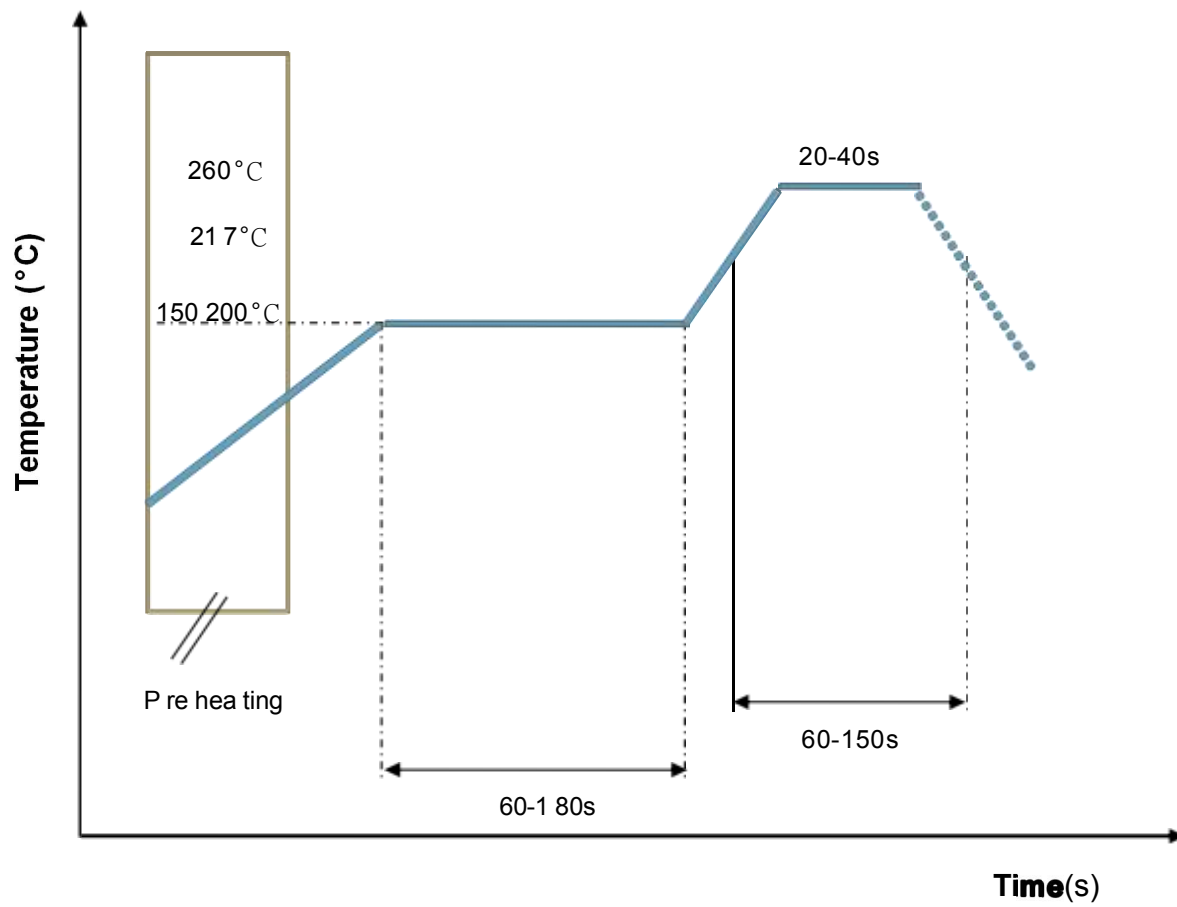


**FREQUENCY CHARACTERISTICS**

**EFFICIENCY AND VSWR**

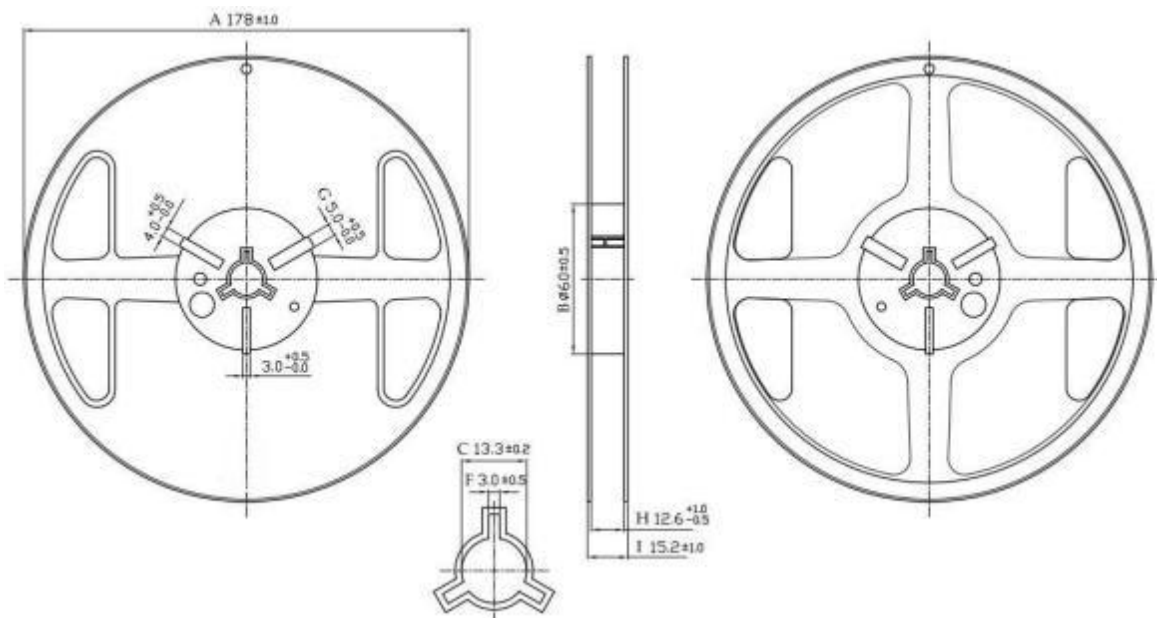


■ RECOMMENDED REFLOW PROFILE

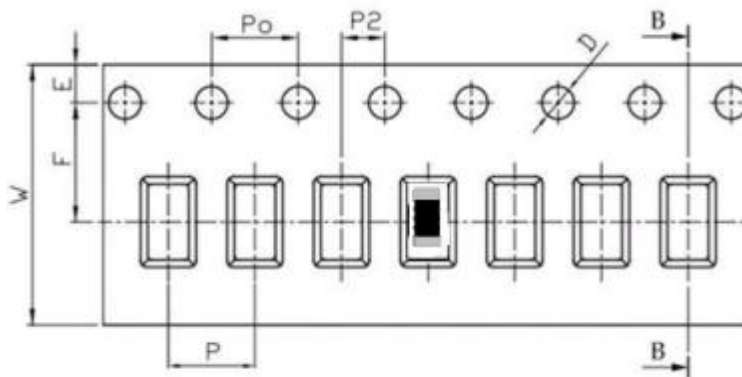


**PACKAGING STYLE**

REEL DIMENSIONS



TAPE DIMENSIONS



Feature	Specifications	Tolerances
W	8.00	±0.30
P	4.00	±0.10
E	1.75	±0.10
F	3.50	±0.10
P2	2.00	±0.10
D	1.50	+0.10 -0.00
P0	4.00	±0.10
10P0	40.00	±0.20

Typing Quantity: 5000 pieces per 7" reel



**Order Information**

Device	Package	Net Weight	Carrier	Quantity	HSF Status
CA-2450-31	3216	0.0089g	Tape& Reel	5000pcs	RoHS compliant

**Revision history**

Date	Revision	Description of changes
2018- 11-5	1.0	First Version

The contents of this data sheet are subject to change without notice.  
Please confirm the specifications and delivery conditions when placing your order.

© Copyright 2021,Haizhe Electronics

All rights reserved