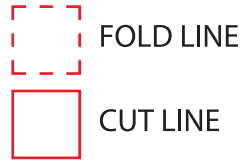




PRINT ARTWORK ON DIRECTLY ON PAPER.
DO NOT PRINT RED FOLD AND CUT LINES. OPEN USER MANUAL DIMENSIONS: 9.8"W x 5.5"H



Front

<p>ijoy</p> <p>BLUETOOTH EARBUDS DELTOM FCC ID: 2AJQ7DELTOM MODEL: IJ10086-VW</p>  <p>USER MANUAL</p> <p>for use with  Bluetooth enabled devices</p>	<p>ijoy</p> <p>QUEST USA CORP. 495 Flatbush Ave Brooklyn, NY 11225</p> <p>© GOIJOY & IJOY are registered trademarks of QUEST USA CORP. All other trademarks and trade names are property of their respective owners. Designed by GOIJOY & IJOY in New York. All rights reserved QUEST USA CORP.</p> <p>Made in China.</p>	<p>•CHARGING CASE</p> <p>iJoy Deltom charging case charges earbuds 3 times faster for the ultimate listening experience. Leave in for 1-2 hours of charging for best results. Just place left and right earbuds inside the charging case sockets.</p> <p>When Charging: When the device is charging your earbuds, the light will flash slowly.</p> <p>Fully Charged: When fully charged, the charging case light will remain on.</p> <p>(To make sure earbuds are working properly, please make sure they are fully charged.)</p> 	<p>•INSTRUCTIONS</p> <p>POWERING ON / OFF</p> <p>•Power on: The earbuds will automatically power on when left the case.</p> <p>Bluetooth: From your phone, go to bluetooth settings and make sure it is turned "on". Search for the bluetooth name IJOY DELTOM and click "connect". To establish a smooth connection it is suggested that the distance between the phone and earbud is 8 meters.</p> <p>Auto Connect: Once paired, your phone will remember the Deltom bluetooth name, and you will be able to connect automatically.</p> <p>Volume Reduction Press the left earbuds three times consecutively</p> <p>Volume Increase Press the right earbuds three times consecutively</p> <p>Game Mode/Normal Mode Press four times consecutively</p> <p>Play/Pause Press once to play and pause your music</p> <p>Previous Song Press two times consecutively</p> <p>Answer/Hand Up Call Short Press</p> <p>Reject Call Long press (hold for 2 seconds)</p> 
---	---	--	--

Back

<p>•YOUR IJOY PRODUCT</p> <p>Thank you for purchasing and using the "IJOY DELTOM" BLUETOOTH EARBUDS listening experience while staying active. Before using this product, carefully read this manual to in order to operate at maximum benefit. Please ask your local dealer or call us if you have any questions.</p> <p>IJOY DELTOM x 1 User Manual x 1 Charging Case x 1 Charging Cable x 1</p> <p>•PRODUCT SPECIFICATIONS</p> <p>DRIVER DIAMETER •IMPEDANCE: 32Ω •EARBUDS BATTERY CAPACITY: 30mahX2 •CASE BATTERY CAPACITY: 150mah •BLUETOOTH VERSION: 5.3 •BLUETOOTH RANGE: 10M •CHARGING TIME: 2H •PLAY TIME: 6-8H, 50% VOLUME. •THE CASE CAN SUPPORT EARBUDS UP TO 3 TIMES CHARGES</p> <p>•PRODUCT FEATURES</p> <ul style="list-style-type: none"> •Up to 12 hours Playtime •Hands-Free Calls •LED Lights •Charging Case Holds 3 Times Charges •Bluetooth •Touch Control 	<p>•FCC ID STATEMENT</p> <p>This device complies with part 15 of the FCC Rules. Operation is subject to the following two conditions: (1) This device may not cause harmful interference, and (2) this device must accept any interference received, including interference that may cause undesired operation. Warning: Changes or modifications not expressly approved by the party responsible for compliance could void the user's authority to operate the equipment.</p> <p>NOTE: This equipment has been tested and found to comply with the limits for a Class B digital device, pursuant to Part 15 of the FCC Rules. These limits are designed to provide reasonable protection against harmful interference in a residential installation. This equipment generates uses and can radiate radio frequency energy and, if not installed and used in accordance with the instructions, may cause harmful interference to radio communications. However, there is no guarantee that interference will not occur in a particular installation. If this equipment does cause harmful interference to radio or television reception, which can be determined by turning the equipment off and on, the user is encouraged to try to correct the interference by one or more of the following measures: Reorient or relocate the receiving antenna. Increase the separation between the equipment and receiver. Connect the equipment into an outlet on a circuit different from that to which the receiver is connected. Consult the dealer or an experienced radio/TV technician for help.</p> <p>RF warning statement: The device has been evaluated to meet general RF exposure requirement. The device can be used in portable exposure condition without restriction.</p>	<p>•BATTERY CAUTION</p> <p>The battery used in this device may present a risk of fire, explosion or chemical burn if used incorrectly. Never use or charge the battery if it appears to be leaking, discolored, deformed or in any way abnormal. Never disassemble the unit or attempt to remove the battery as that could cause leakage of alkaline solution or other electrolytic substances. Never expose the battery to any liquid. Never expose the battery to excessive heat such as direct light or fire. Always keep the battery out of the reach of infants and small children.</p> <p>•BATTERY DISPOSAL</p> <p>Please do not attempt to change the battery yourself. If the battery has died, you should follow the disposal instructions listed here. Never dispose of used batteries/electronics with ordinary solid wastes. Always dispose of used batteries/electronics in accordance with the prevailing community regulations that apply to the disposal of batteries/electronics. If there are no local regulations concerning battery/electronics disposal, please dispose of the device in a waste bin for electronic devices. Many electronics retailers now recycle batteries and other electronic components at no charge.</p>	<p>•CLEANING YOUR EARBUDS</p> <p>To keep your earbuds charging surface clean, use a cotton swab after using.</p> <p>•OTHER IMPORTANT SAFETY INFORMATION</p> <p>Disposal of old electronic & electronic equipment (Applicable in the European Union and other European Countries with separate collection systems) The trash can symbol (seen on the bottom) on the production indicates that this product shall not be treated as household waste. Instead it shall be handed over to the applicable collection point for recycling of electronic equipment. By ensuring this product is disposed of correctly, you will help prevent potential negative consequences for the environment and human health, which could otherwise be caused by inappropriate waste handling. For more detailed information about this product, please contact your local household waste disposal service or the shop where you purchased this item.</p> <div data-bbox="2289 1394 2571 1528"> <p>IMPORTANT REMINDERS</p> <p>This device can ONLY be charged by 5V adapters/USB ports only. Quick charging devices over 5V may cause heat and fire.</p> </div>  
---	---	--	---