



Micro PC

Operating Instruction Manual

www.gpd.hk

Shenzhen GPD Technology Co., Ltd.

Technology Department

Add: Room 1006 Block 4D, Software Industry Base,
High tech park, Nanshan district, Shenzhen, Guangdong
Province, 518000, China

Email add : sales03@gpd.hk

Telephone : +86 0755-86572275

Catalog

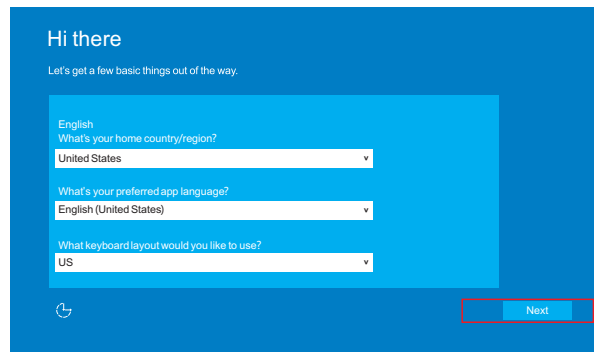
| | |
|--|----|
| I. Language Settings upon Boot Up | 3 |
| II. How to prevent vertical rotation | 5 |
| III. Keyboard and Gamepad Tests | 5 |
| What is the meaning of Dinput mode and Xinput mode | 5 |
| IV. Initial System Optimization | 6 |
| 1. Optimizations for the best performance | 6 |
| 2. Disable Win10 functions | 7 |
| 3. Disable Windows Defender | 9 |
| 4. Disable automatic update of Win10 | 11 |
| 5. Disable the firewall of Win10 | 14 |
| 6. Turn off Cortana | 16 |
| Method 1. Use the registry to disable Cortana | 16 |
| 7. Disable Win10 boot login password | 17 |
| 8. Disable and optimize system services | 18 |
| 9. Adjust font size | 20 |
| 10. Turn off the system restore function | 22 |
| V. System FAQ | 23 |
| System is broken, how can I re-install it? | 23 |
| Cannot find any Wi-Fi hotspot, what should I do? | 26 |
| How to upgrade to newer versions of BIOS? | 26 |
| VI. Technical service | 28 |
| Mailing information | 28 |

I. Language Settings upon Boot Up

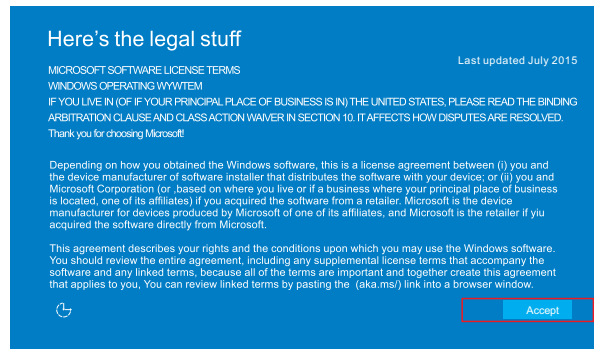
The first thing to do after boot up is “Gamepad \ Mouse mode switch”, that is: switching on the “mouse mode” by adjusting the mode control key to the middle.



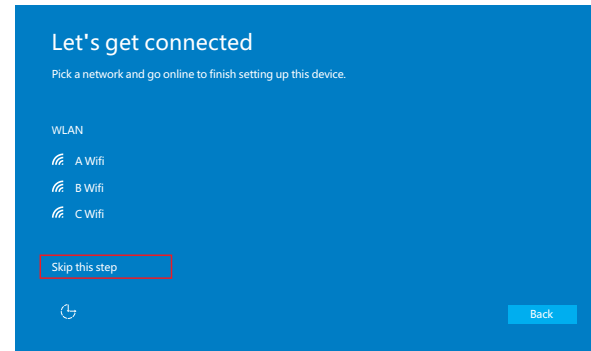
After logging in into the system, the default setting is in English, please do not select the language on the selection box, instead just directly click the NEXT on the bottom right



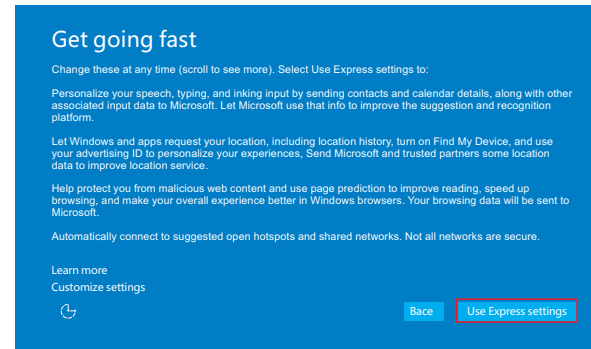
When going into the next page, the below content will be shown. The content is about some legal issue. After viewing it, please click Accept on the bottom right



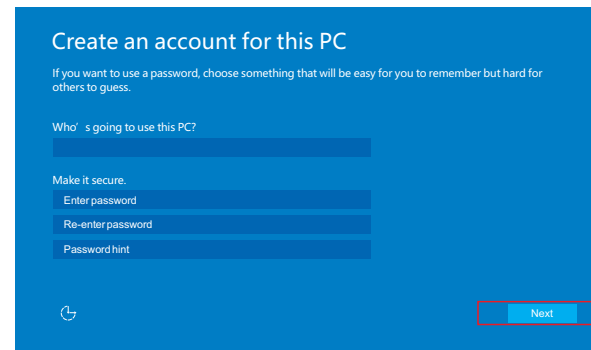
Go to the “Establish Connection” page, at this point you do not have to set up a Wi-Fi connection, just click “Skip this step” at the bottom and go to the next step.



In the “Get going fast” page, click “Use Express settings” and skip to the next page.



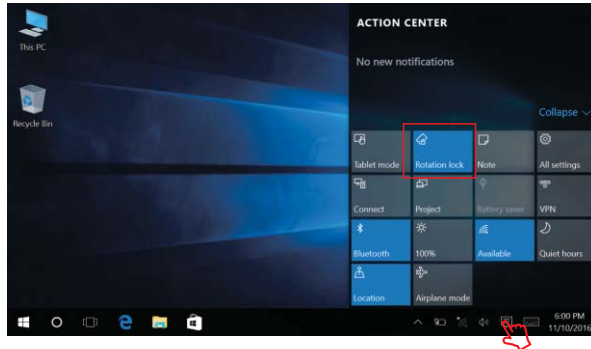
Now you need to create an account for the computer, for which you need to enter a user name and password and filling out password prompt questions. Be sure to remember the password, otherwise you will have to reset the whole system and start over. Click “Next” after creating an account.



Wait a little while for the system to finish loading.

II. How to prevent vertical rotation

After entering the system, the first thing to do is to prevent vertical screen rotation. It is very easy to do this, just move the pointer (using mouse mode) to the system tray in the lower right corner of the screen and click "Notification", and then click "Rotation Lock" in the notification area.



III. Keyboard and Gamepad Tests

Go to <http://www.gpd.hk/news.asp?id=1519&selectclassid=002002> Download "XD_WIN User Full Test Instructions.rar", which contains three applications, namely:



- JoyTester.exe for gamepad test in Dinput mode
 - PS3 & PS4 0607.exe for gamepad test in Xinput mode
 - Keyboardtestutility.exe for keyboard test
- "XD_WIN User Full Test Instructions" contains detailed explanation of test steps.

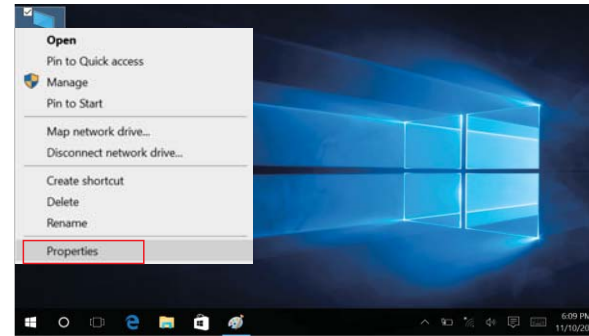
Description of handle mode:

The handle is the Xinput mode. Microsoft to promote console Xbox 360 console and transplanted into the PC game, a new Xinput apis interface standard, game cover if there is a "Games - for - Windows", you need to use the handle of the Xinput support mode. For example, the game "F1 2010", "colin McCrea rally" and so on.

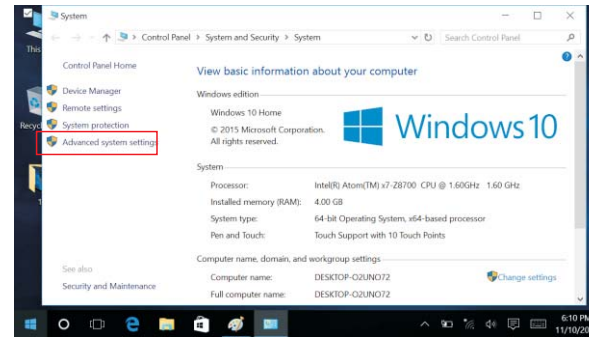
IV. Initial System Optimization

1. Optimizations for the best performance

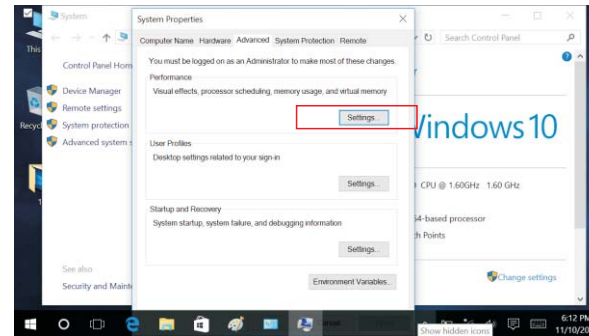
Step 1: Right click "My Computer" and click "Properties".



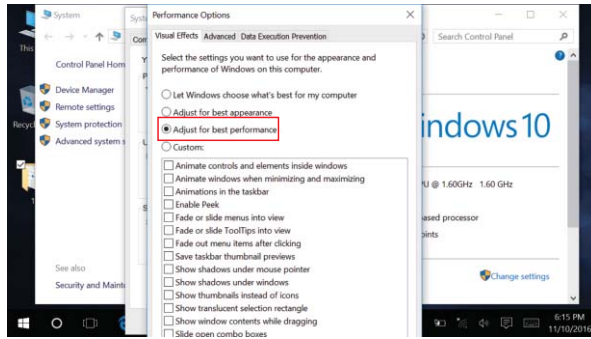
Step 2: Click on the area circled by the red box.



Step 3: Click on the area circled by the red box.



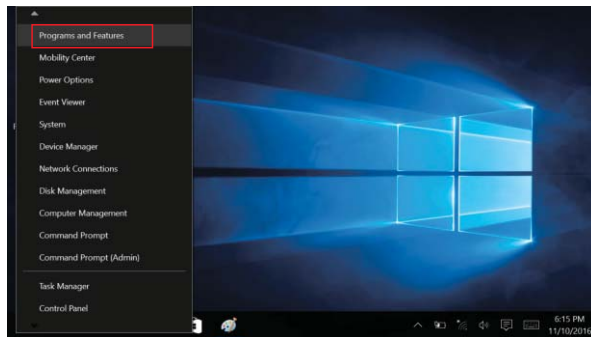
Step 4: Click on the area circled by the red box.



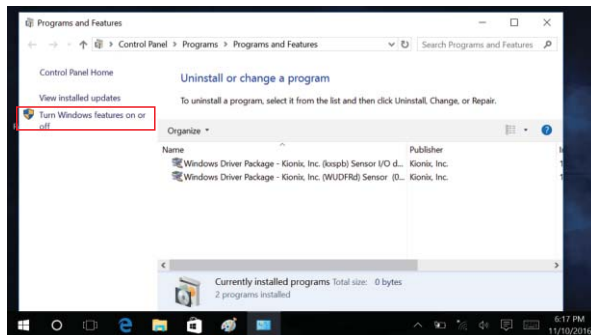
Step 5: Click OK to save and exit.

2. Disable Win10 functions

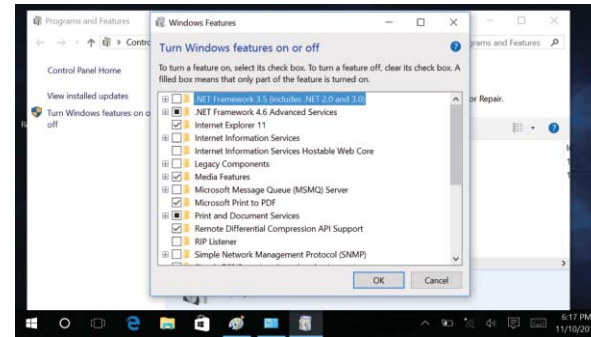
Step 1: Right-click the start menu button of Windows10, then select “Programs and Features” in the pop-up menu.



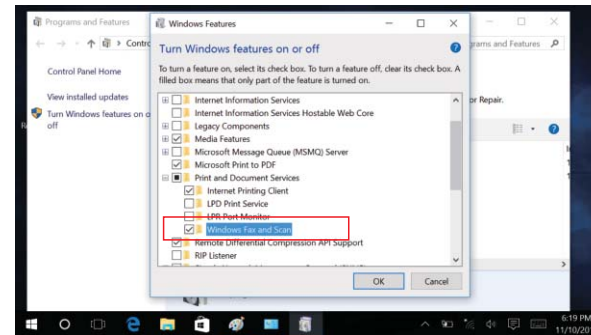
Step 2: In the opened window of Programs and Features, click the quick link of “Enable and Disable Windows Services” on the left.



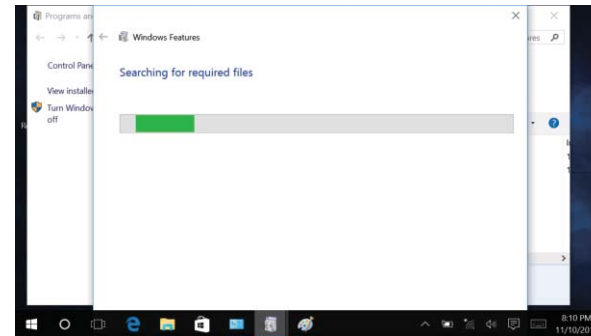
Step 3: A Windows function screen will appear, in which you can see some system services that come with Windows10.

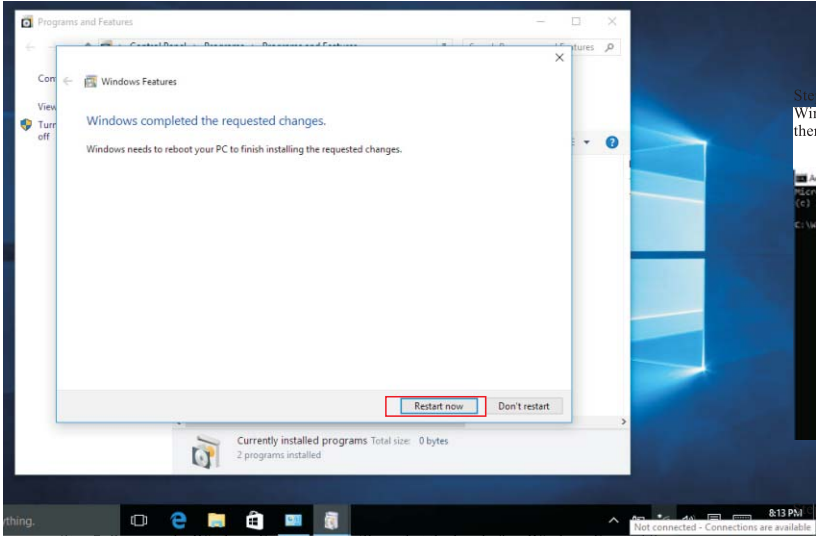


Step 4: For example, in order to disable the Fax and Scan Service of Windows10, you need to pull on the right side of the scroll bar and drag it to find the item of Print and Services, then expand the same for more sub-items, in which you will see the sub-item of Fax and Service, uncheck the box in front to turn off this service.

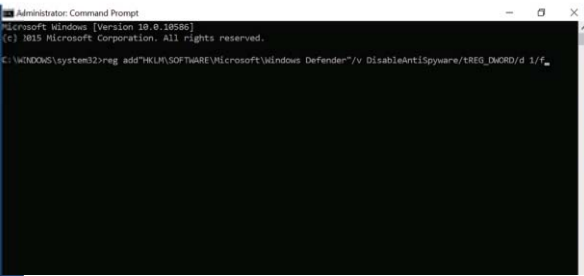


Step 5: A pop up window showing “Searching for Required Files” will appear.



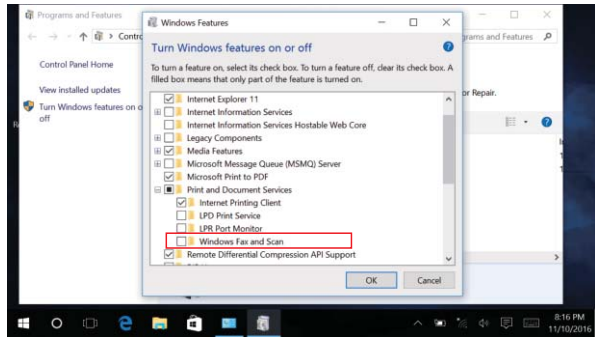


Step 2: In the DOS windows, input command line: reg add "HKLM\SOFTWARE\Microsoft\Windows Defender" /v DisableAntiSpyware /t REG_DWORD /d 1 /f and press Enter, then restart GPD WIN.



Step 3: Going to the computer desktop, double click "Control Panel" on the desktop.

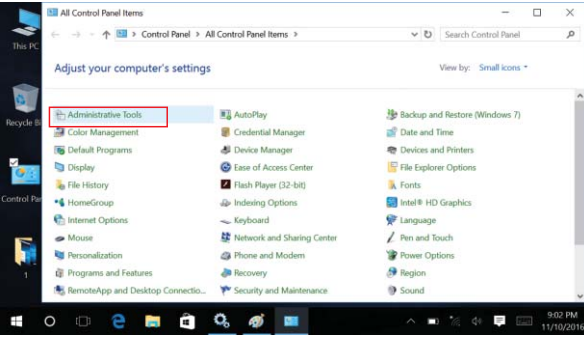
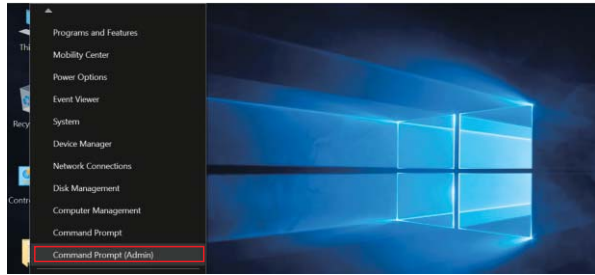
Step 7: Re-open the Windows Features you will see that the box before Windows Fax and Scan has been un-checked. You can easily re-enable this service by simply checking the box again.



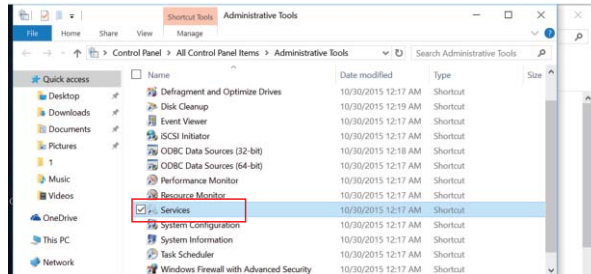
Step 4: Click "Administrative Tools"

3. Disable Windows Defender

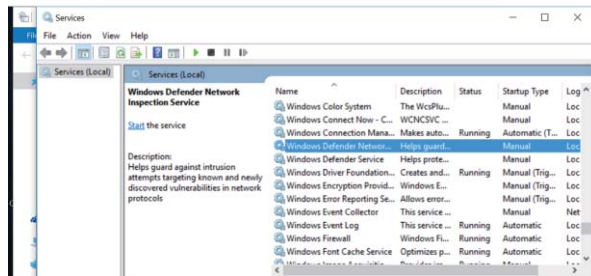
Step 1: Right click "Start" - "Command Prompt (Administrator)"



Step 5: Double click "Service"

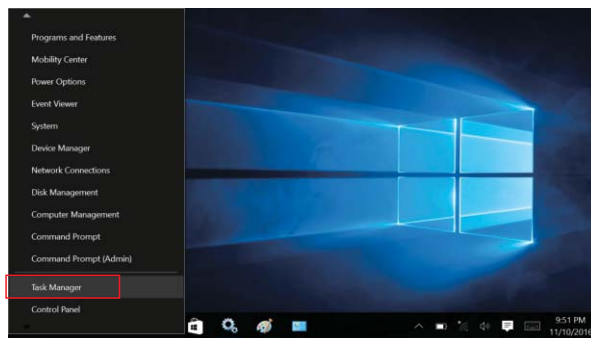


Step 6: Stroll down the service list, check if the services "Windows Defender Network Inspection Service" and "Windows Defender Service" has been stopped.

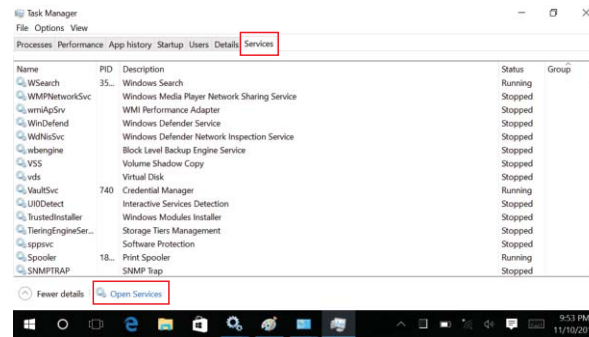


4. Disable automatic update of Win10

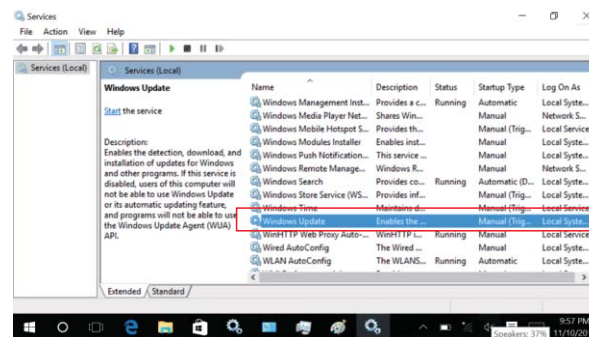
Step 1: Of course, many people are using Windows 10 Home Edition for which Group Policy Editor is not available, so in order to use the service control function we need to open the Task Manager first.



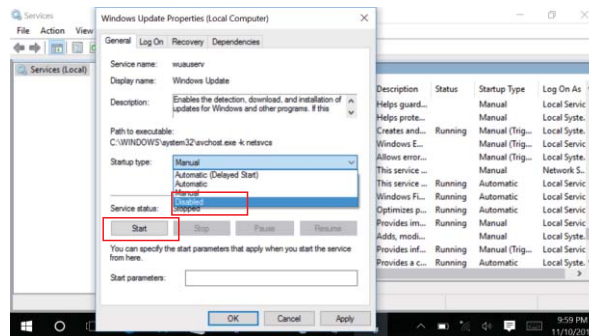
Step 2: Select "Services" in the Task Manager. After switching to the service page, click on "Open Services" at the bottom of the page, which will bring you to the page of Windows Component Services Management.

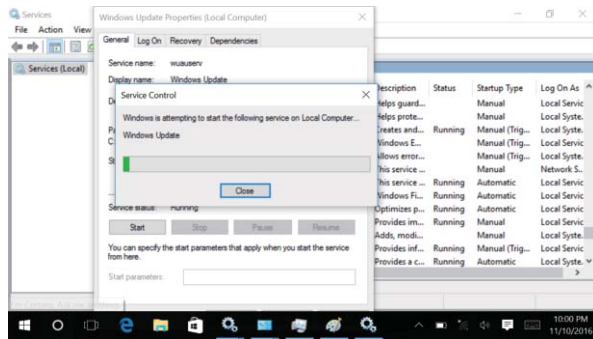


Step 3: After opening the Service Management page, you need to find "Windows Update" in the list of services as it is the target for configuration.

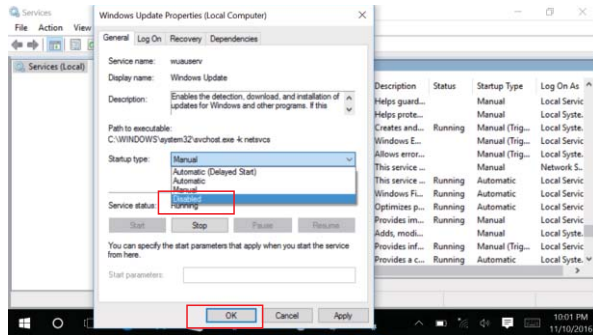


Step 4: When the Windows Update service configuration option is turned on, first click on the "Disable" option on the interface to temporarily disable the Windows Update feature, which will be shut down after a short wait.

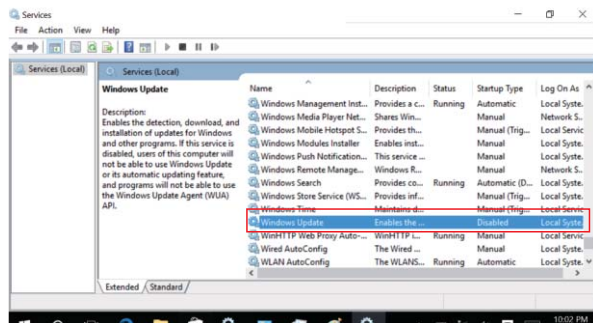




Step 5: Next, we need to tackle with the auto update feature of Windows. Click on the drop-down list and select "Disable", then click OK at the bottom of the page, the auto-start feature of Windows Update shall be turned off as a result and Windows Automatic Updates shall have been disabled as well.

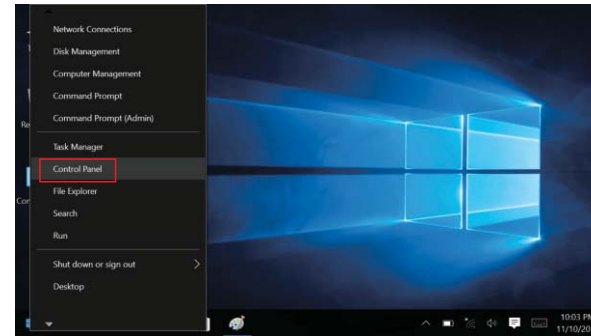


Step 6: Tips: With Windows10, Microsoft has changed its updating mechanism for the purpose of encouraging user to take the initiative to accept updates, so as to enhance the user experience of Windows10 as a new service-oriented system. As such, in order to realize system stability and security, it is recommended not to turn off automatic update, unless it is taking up a lot of network bandwidth, in which case we can temporarily turn off this service.

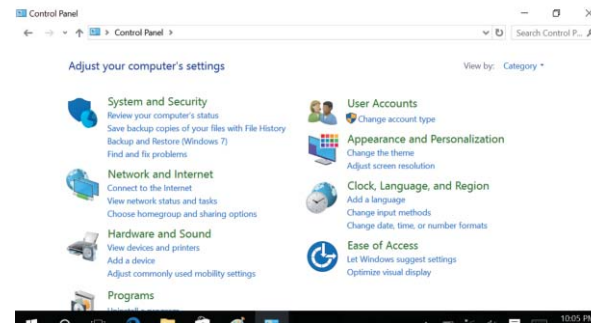


5. Disable the firewall of Win10

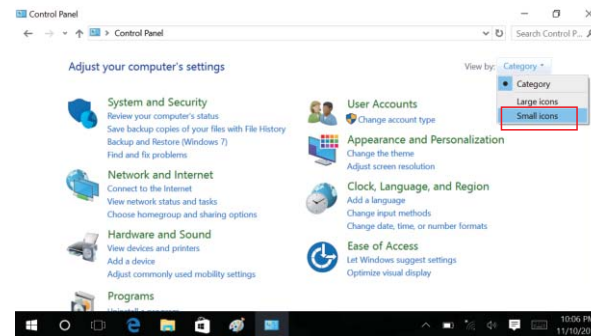
Step 1: We can use win + x shortcut on the keyboard to bring up common commands. Select "Control Panel".



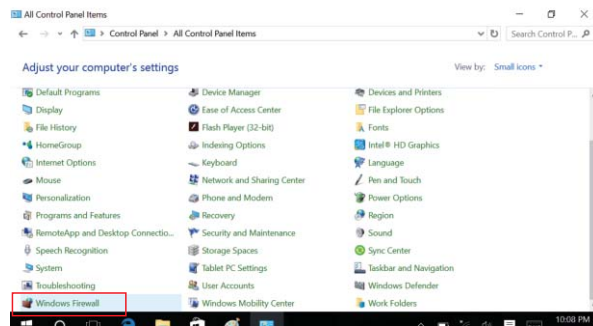
Step 2: Enter the control panel.



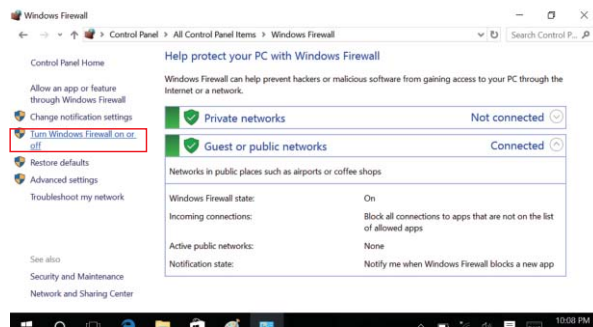
Step 3: Change the display mode of "Control Panel" to "Small Icon".



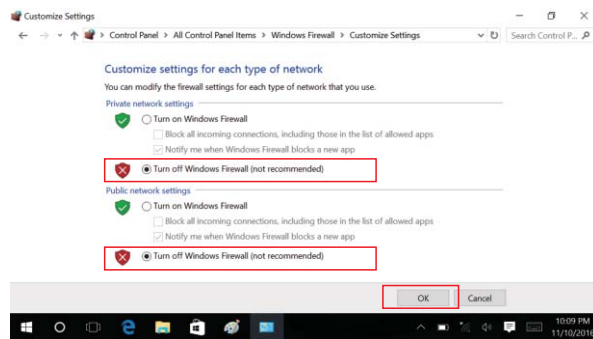
Step 4: Find "Windows Firewall" among other small icons in the Control Panel.



Step 5: Enter "Windows Firewall" and select "Enable or Disable Windows Firewall"



Step 6: The firewall is turned on by default. We just need to turn it off by selecting "Close".



Step 7: We can open or close the firewall following the above-mentioned steps. It is not difficult at all.

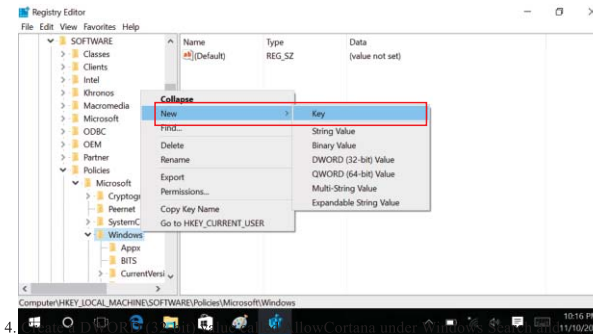
6. Turn off Cortana

Cortana is a powerful tool of Win10 that can give us more convenience when using a computer. As the proprietary voice assistant of Win10, Cortana can receive voice commands to help us complete daily tasks. However, the negative point about Cortana is that it collects the user's personal information, which might be prone to leakage. So how can we completely disable Cortana? It can be done through different methods, we will discuss the same in the text below:

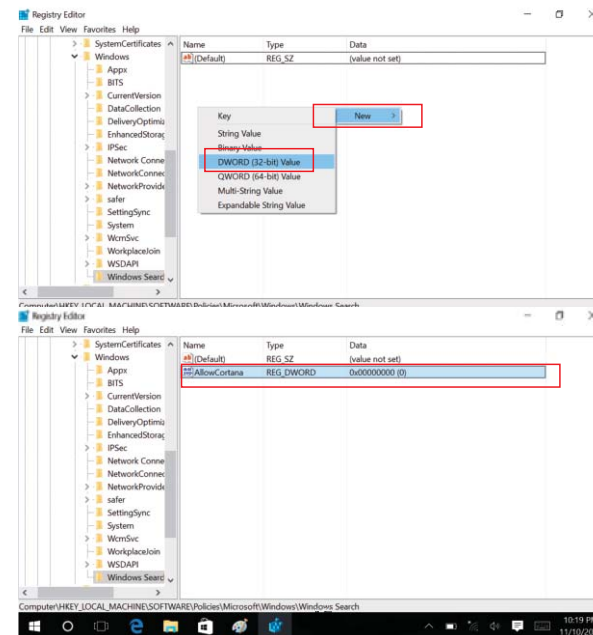
Method one. Use the registry to disable Cortana

Users of Win10 Home Edition can disable Cortana functionality directly from the registry:

1. Use Windows + R shortcut key to open the "Run" – type in regedit to open the Registry Editor.
2. Navigate to the following path: HKEY_LOCAL_MACHINE \ SOFTWARE \ Policies \ Microsoft \ Windows \
3. Create a new item called Windows Search.



4. set its value to 0.



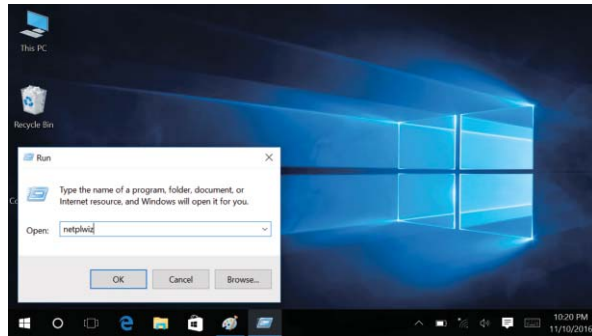
Although Cortana can bring us a lot of benefits, one can never overlook the possibility of personal information leaking out. You can either use the methods mentioned above to disable it or choose not to enable it during the Win10 installation process.

7. Disable Win10 boot login password

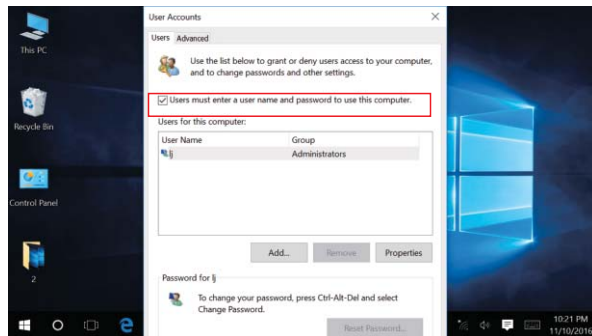
Step 1: Right-click the Start Menu and select Run in the pop-up menu as shown in the following picture.



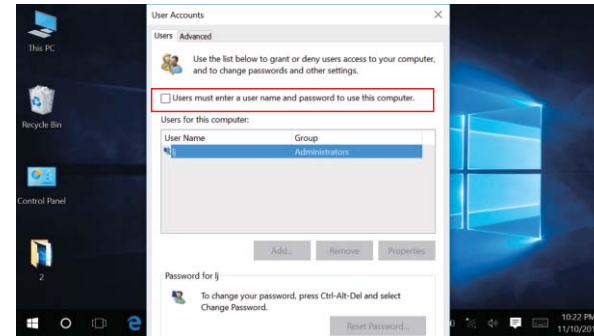
Step 2: Type: netplwiz in the Run dialog box and click OK, as shown below.



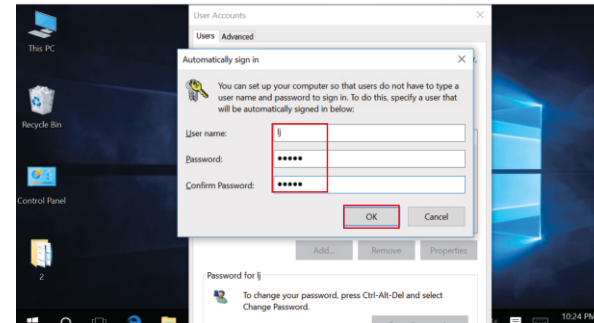
Step 3: After clicking OK, you can see in the user account dialog box that "To use this computer, the user must enter the user name and password" is checked, as shown below.



Step 4: Un-check the box before "To use this computer, the user must enter the user name and password" and then click Apply, as shown below.



Step 5: The permissions verification dialog box for auto login will appear after clicking Apply, enter your user name and password and click OK. The next time you will not need a password to enter the system.



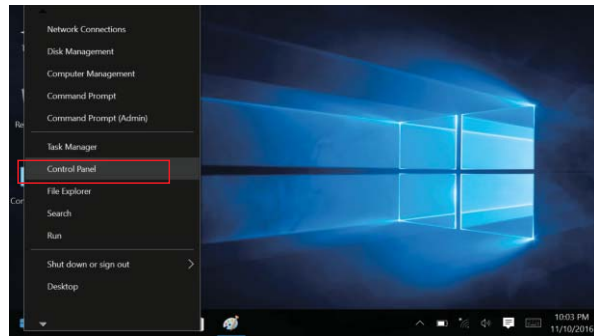
8. Disable and optimize system services

System services become active after boot and can take up a lot of system resources. A lot of system services are not useful for gamers in general. Here's a bat file + registry optimization tool that works for all Windows 10 versions. Click the link below to download <http://pan.baidu.com/s/1eRPL24E>, unpack the file downloaded and double-click to run the tool.

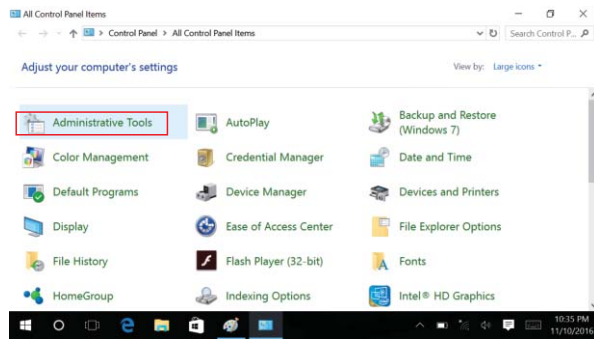


Note: This optimization tool can shut down system services that may affect the operation of certain games. If you cannot manually restore system services or predict which services need to be re-enabled, it is not recommended to use this tool. Assuming that you know which system service is disabled, you can manually re-enable it as follows:

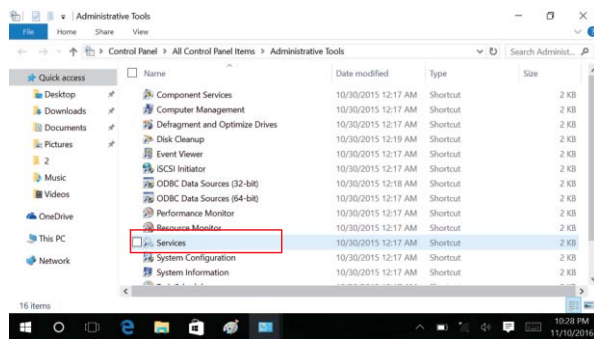
Step 1: Right-click the Start Menu, select "Control Panel"



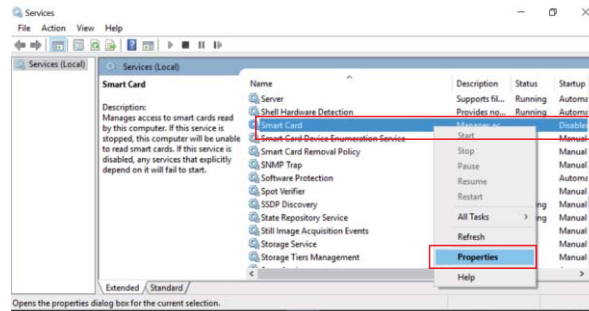
Step 2: Select "Management Tools" in the Control Panel.



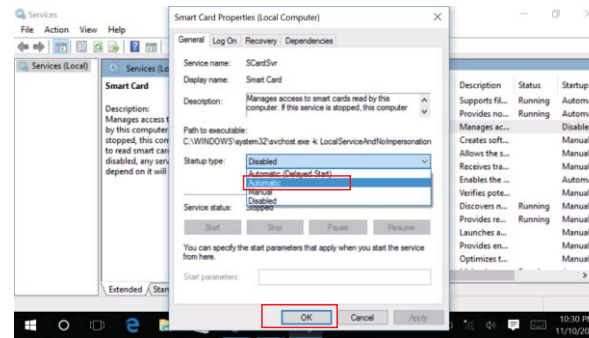
Step 3: Double-click "Management Tools" to open the list of management tools:



Step 4: Double-click "Service" to open the service window.
Assuming that the Smart Card service is disabled, we can turn it on through the following method, right-click and select "Properties":



Step 5: In the window of "Smart Card" Properties, change its startup type to "Automatic", click OK and exit.

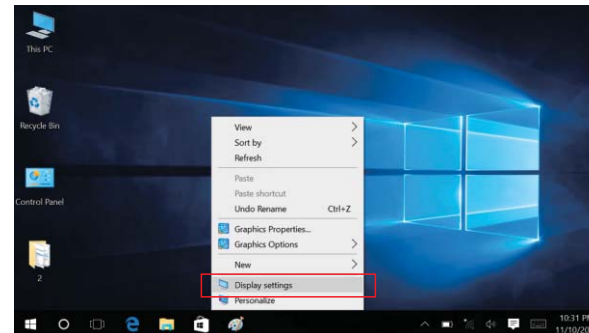


Description: The method shown in this example, in turn, can also be used as a way to manually disable a service.

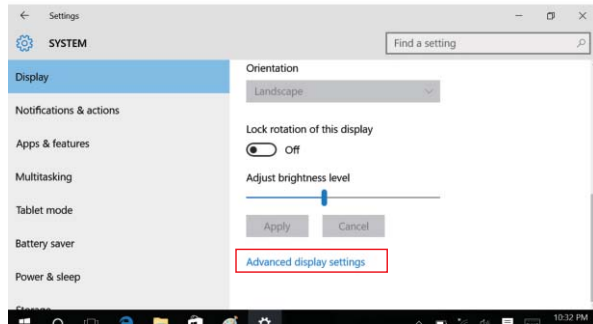
9. Adjust font size

Some say that text is too small in GPD WIN system, we can easily fix this by using the method described below:

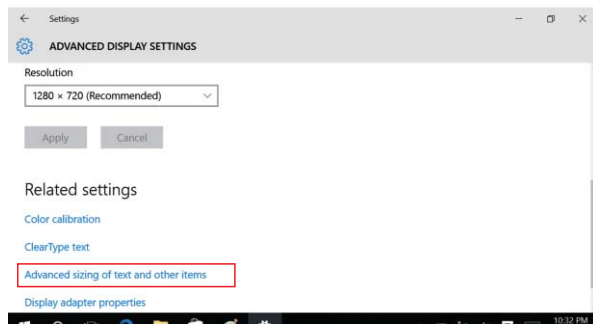
Step 1: Right-click in the desktop space and select "Display Settings"



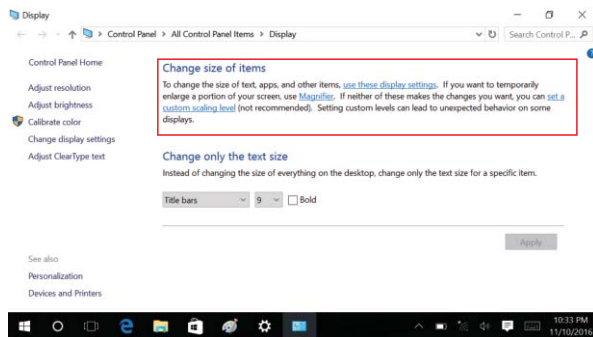
Step 2: Click Advanced Display Settings



Step 3: Click "Advanced options for text and other item sizing"



Step 4: Click "Change the text size only" and adjust the text size based on your needs.



You can also use a corresponding third party application to adjust the text size and this method seems more intuitive.

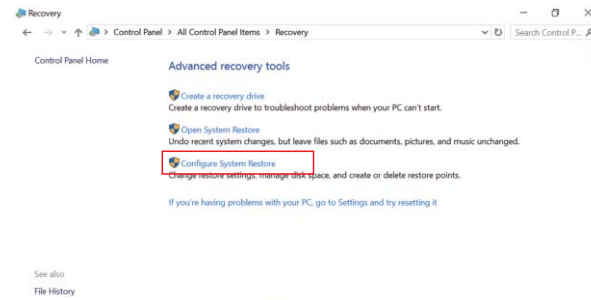
Download Meihuadashi from RuanmeiMofang: <http://mofang.ruanmei.com/screenshots.htm>
 Instructions for use: <http://www.crxz.com/softdoc/pc/31574.html>

10. Turn off the system restore function

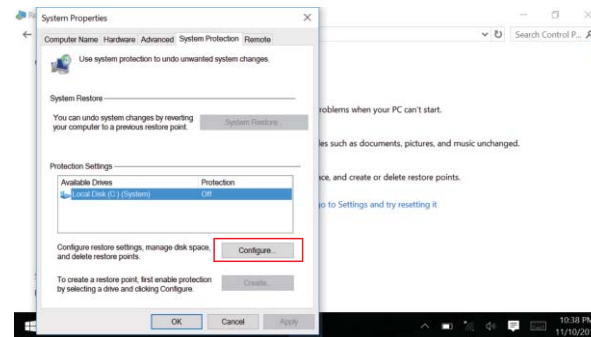
Step 1: In the Control Panel in icon view mode, find and click "Restore"



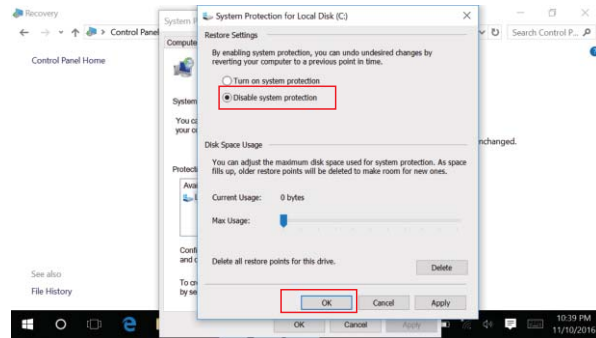
Step 2: In the Restore page, find and click "Configure System Restore"



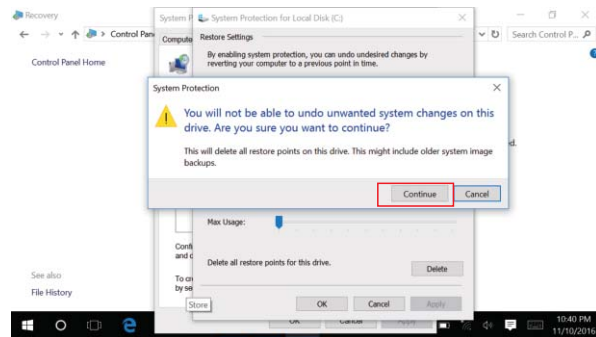
here may change according to your specific system configurations), then click "Configure"



Step 4: In the System Protection Local Disk (C:) dialog box, click to select "Disable System Protection", then "OK" at the bottom.



Tips: If you have created a system restore point before, it is recommended to click "Delete" at the bottom of the screen, then click "Continue" in the subsequent inquiry window. A prompt window will appear after a while, indicating that you have successfully deleted the restore point!
 Step 5: Then the query window of "Are you sure you want to turn off the system restore in this drive?" will pop up, just click "Yes" to disable it!

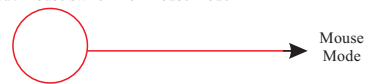


V. System FAQ

System is broken, how can I re-install it?

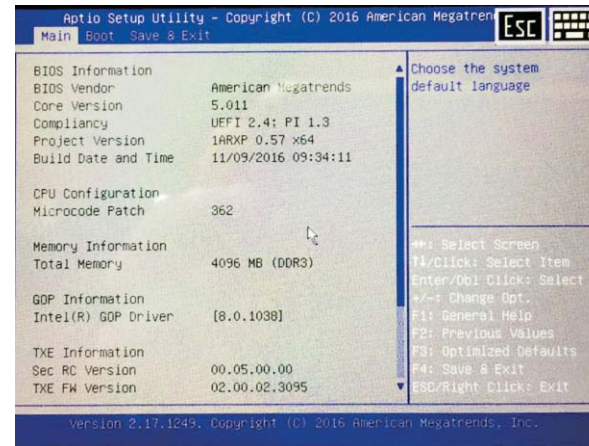
Special reminder: Make sure that there is more than 50% capacity in the battery (The charging current in WINPE mode is only 500mA, you need to ensure adequate power before the upgrade).

Step 1: Adjust the "gamepad / mouse switch" to "mouse mode"

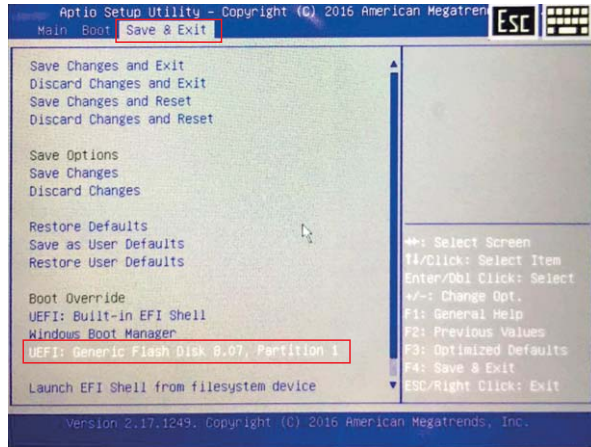


Step 2: Insert the U disk which is used for reinstalling the system into the USB port of the device

Step 3: Restart the device and press the DEL key to enter the BIOS.



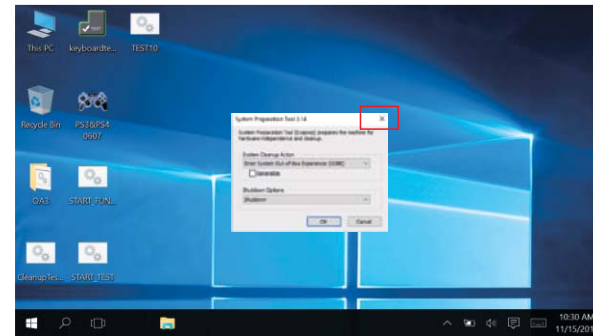
Step 4: Use the left and right arrow keys to switch the BIOS page to Save & Exit, then use the up and down arrow keys to move to "UEFI: Generic Flash Disk 8.07, Partition 1, select it and press Enter.



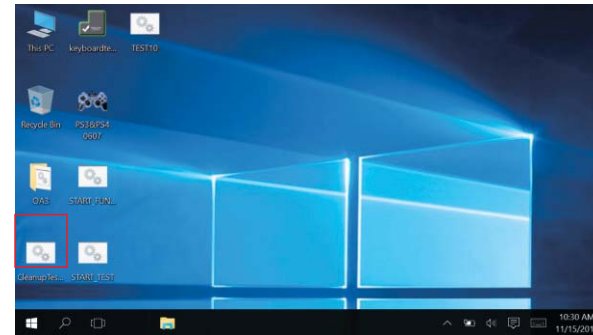
Step 5: We have entered the interface of automatic system installation as shown below. The entire upgrade process takes about 20 minutes. the device will automatically restart when the upgrade is completed.



Step 6: Upon the first boot the system will go to factory mode as shown in the following figure, just click the red X on top right corner to close this window.



Step 7: Double-click the Cleanup TestTool file to automatically clear the OOBE file and shut down.



Step 8: Reboot, then set the language options, please refer to the chapter of “Language Settings upon Boot Up”

Cannot find any Wi-Fi hotspot, what should I do?

The default Wi-Fi supports most of the hot spots, If no Wi-Fi hotspot can be found, you need to download and install the following WIFI compatibility patches (can repair problems in some Mercury routers and Huawei 4G hotspots):

WIFI China channel patch:
<http://www.gpd.hk/news.asp?id=1519&selectclassid=002002>

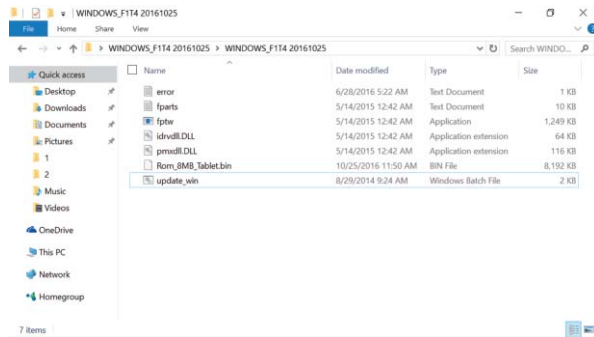
Domestic users shall download the WIFI Chinese channel patch, Download WIFI_CN.rar, and double-click Wi-Fi.bat file (a DOS batch file) after decompression.

How to upgrade to newer versions of BIOS?

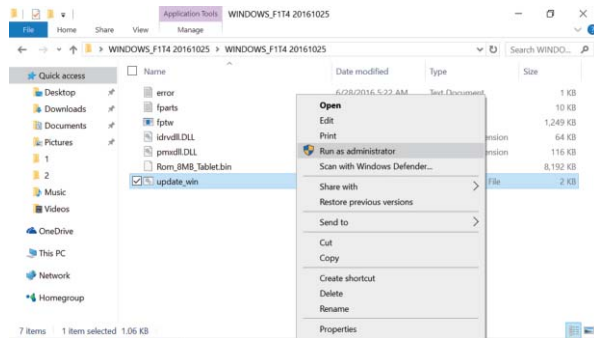
Note: Make sure there is more than 20% capacity left in the battery and operate with administrator privileges.

First download the latest BIOS:
<http://www.gpd.hk/news.asp?id=1519&selectclassid=002002>

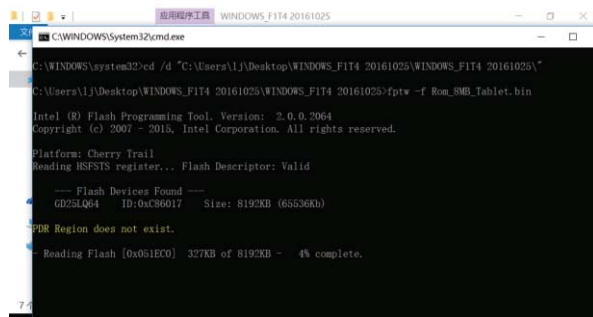
Step 1: download and extract the files, then enter the WINDOWS_FIT4 folder (Note: Do not unzip to the U disk, directly unpacked it to the storage space of the device, otherwise there will be errors)



Step 2: Right-click "update_win.bat", select "Run as administrator"

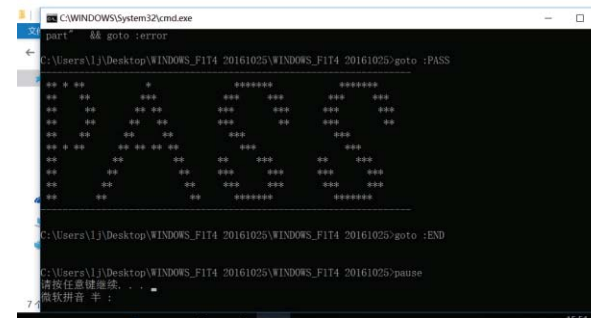


Step 3: the "User Account Control" window will appear, click "Yes" to automatically run the BIOS upgrade program as shown below



Step 4: Wait for the completion prompt of "PASS", as shown below, which indicates the BIOS upgrade is successfully completed.

(If an error occurs, the window will turn red, close the window and re-run it again. Note: do not shut down upon BIOS upgrade failure, just close the window and re-run it for several times!)



Step 5: Restart the device (do not to plug in the charger at this time, otherwise the charging screen will pop up. You can press Ctrl + Alt + Del to restart). The screen will turn black for about 1 minute after restart, then the BIOS will reboot twice for automatic updating purposes, never do forced shutdown at this time!

VI. Technical service

Mailing information

Add:Room 1006 Block 4D,Software Industry Base,
High tech park,Nanshan district,Shenzhen.Guangdong
Province,518000,China

Email add : sales03@gpd.hk

Telephone : +86 0755-86572275

Warning Statement

This device complies with part 15 of the FCC Rules. Operation is subject to the following two conditions: (1) This device may not cause harmful interference, and (2) this device must accept any interference received, including interference that may cause undesired operation.

Any Changes or modifications not expressly approved by the party responsible for compliance could void the user's authority to operate the equipment.

Note: This equipment has been tested and found to comply with the limits for a Class B digital device, pursuant to part 15 of the FCC Rules. These limits are designed to provide reasonable protection against harmful interference in a residential installation. This equipment generates uses and can radiate radio frequency energy and, if not installed and used in accordance with the instructions, may cause harmful interference to radio communications. However, there is no guarantee that interference will not occur in a particular installation. If this equipment does cause harmful interference to radio or television reception, which can be determined by turning the equipment off and on, the user is encouraged to try to correct the interference by one or more of the following measures:

- Reorient or relocate the receiving antenna.
- Increase the separation between the equipment and receiver.
- Connect the equipment into an outlet on a circuit different from that to which the receiver is connected.
- Consult the dealer or an experienced radio/TV technician for help.

The device has been evaluated to meet general RF exposure requirement. The device can be used in portable exposure condition without restriction.