

1. Antenna Spec

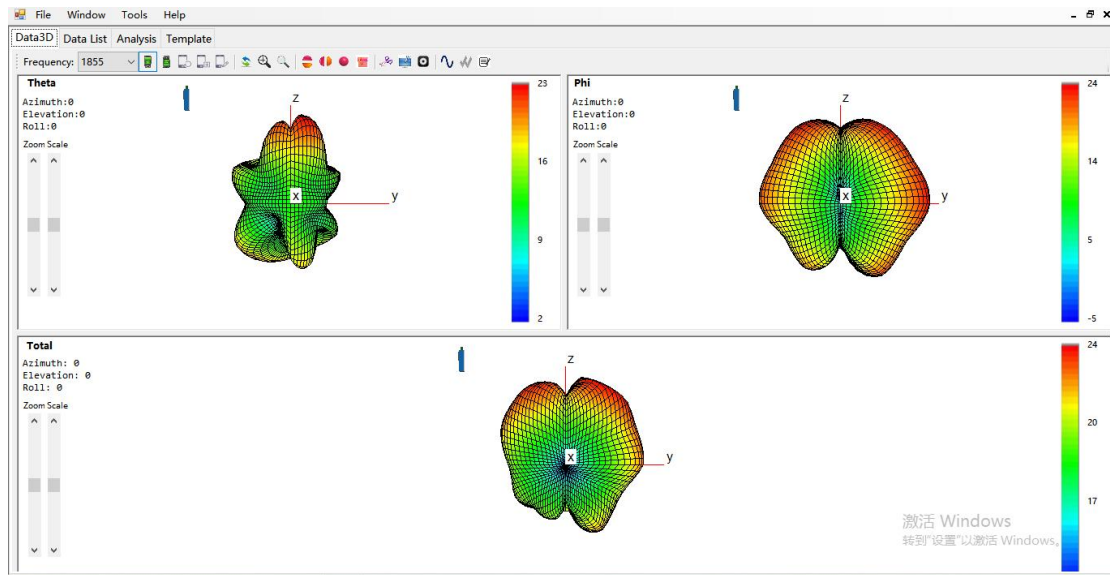
Ant	Description	Ant. Brand name	Ant. Model name	Ant. Type	Adress
ANT1	GSM TRX: 1800/1900	Welletronics Communication Technology Co.,Ltd.	RA-YY/MM/DD	LDS	Shenzhen F1-3,Building 8,Tongfu Industrial Park,Dalang,Longhua new Area
	WCDMA TRX: B1/2/4				
	LTE TRX: B2/4/25/66				
	LTE DRx: B7/41				
	NR TRX: n2/25/66				
	NR DRx: n7/41				
ANT2	GSM TRX: 850/900				
	WCDMA TRX: B5				
	LTE TRX: B5/8/12/17/26/28/71				
	NR TRX: n5/8/71				
ANT3	LTE PRX_MIMO: B2/4/25/66				
	LTE DRX_MIMO:B7/41				
	NR DRX_MIMO: n7/41				
	NR PRX_MIMO: n2/25/66/77/78				
ANT4	NR TRX: n77/78				
ANT5	GSM DRx: 850/900/1800/1900				
	WCDMA DRx: B1/2/4/5				
	LTE DRx: B5/8/20/28				
	LTE DRx: B5/8/12/17/26/28/71				
	NR DRx: n5/8/71				
	NR DRx: n2/25/66				
	LTE TRX: B7/41				
	NR TRX: n7/41				
ANT6	WIFI5G				
	NR_DRX : n77/78				
ANT7	BT+WiFi 2.4GHz+GPS				
ANT8	LTE DRX_MIMO: B2/4/25/66				
	NR DRX_MIMO: n2/25/66/77/78				
ANT9	LTE PRX_MIMO: B7/41				
	NR PRX_MIMO: n7/41				

2. Antenna Pattern Plot

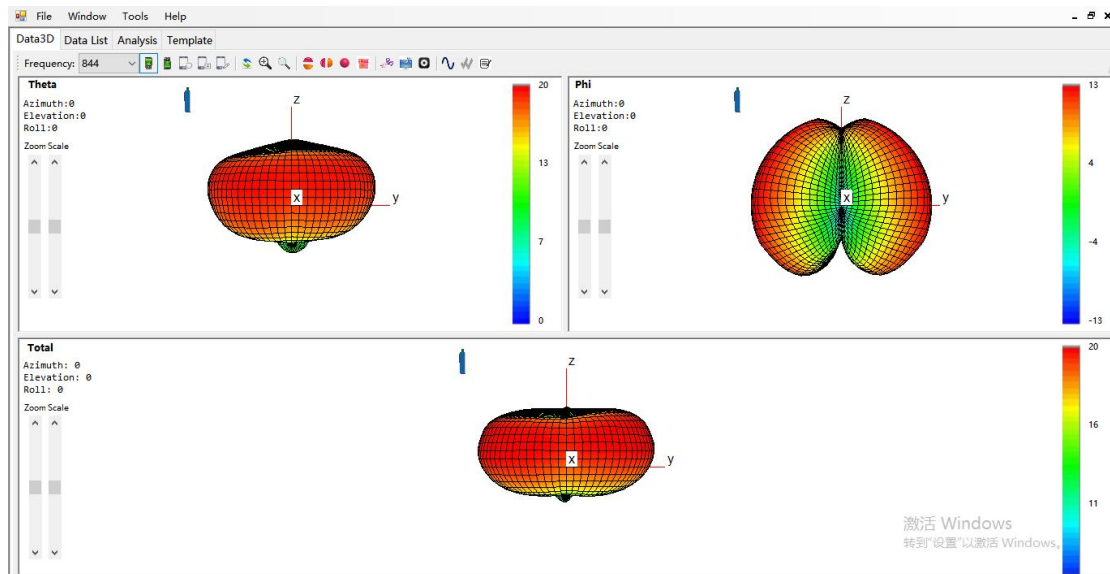
Band		ANT_Num_Tx	Average Gain(dBi)	Maximum Gain (dBi)	TYPE
GSM	850	[2]	-3.3	-2.9	LDS
	900	[2]	-3.5	-3.1	LDS
	1800	[1]	-1.28	-0.8	LDS
	1900	[1]	-1.5	-1	LDS
WCDMA	WCDMA1	[1]	-0.7	-0.5	LDS
	WCDMA2	[1]	-1.5	-1	LDS
	WCDMA4	[1]	-1.28	-0.8	LDS
	WCDMA5	[2]	-3.3	-2.9	LDS
LTE	B2	[1]	-1.5	-1	LDS
	B4	[1]	-1.28	-0.8	LDS
	B5	[2]	-3.3	-2.9	LDS
	B7	[5]	-0.87	-0.5	LDS
	B8	[2]	-3.5	-3.1	LDS
	B12	[2]	-3.9	-2.9	LDS
	B17	[2]	-3.9	-2.9	LDS
	B25	[1]	-1.5	-1	LDS
	B26	[2]	-3.9	-2.9	LDS
	B28	[2]	-3.9	-2.9	LDS
	B41	[5]	-0.62	-0.5	LDS
	B66	[1]	-1.28	-0.8	LDS
B71	[2]	-4.2	-3.7	LDS	
NR	N2	[1]	-1.5	-1	LDS
	N5	[2]	-3.3	-2.9	LDS
	N7	[5]	-0.87	-0.5	LDS
	N8	[2]	-3.5	-3.1	LDS
	N25	[1]	-1.5	-1	LDS
	N41	[5]	-0.62	-0.5	LDS
	N66	[1]	-1.28	-0.8	LDS
	N71	[2]	-4.2	-3.7	LDS
	N77	[4]	-2.45	-1.9	LDS
N78	[4]	-2.1	-1.9	LDS	
WIFI	5G	[6]	0.5	0.8	LDS
	2.4G	[7]	-0.5	-0.2	LDS
BT	2.4G	[7]	-0.5	-0.2	LDS
GPS	L1	[7]	-4	-4	LDS

3. Antenna Pattern Plot

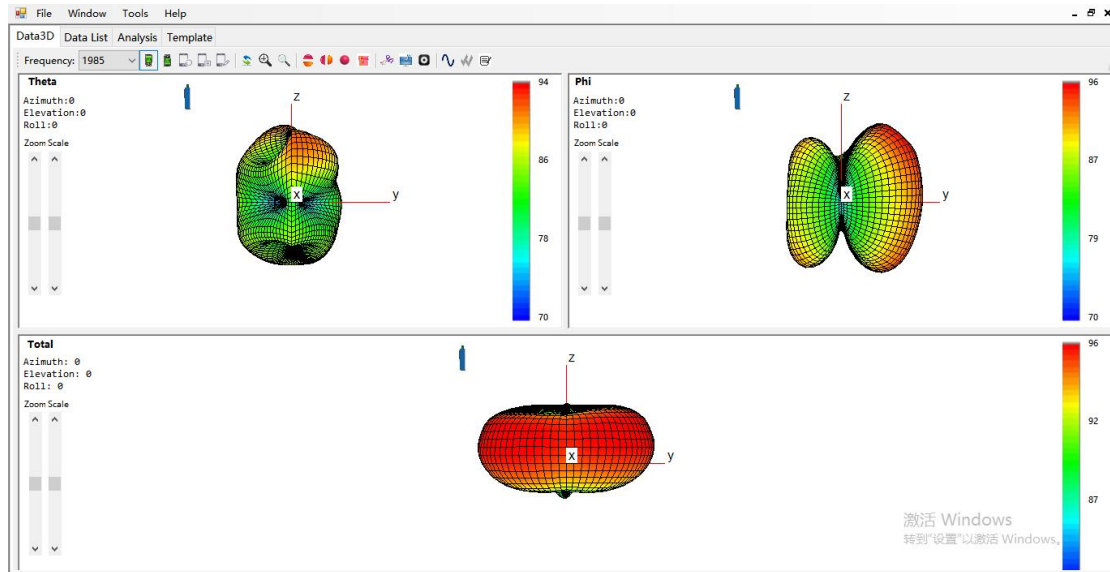
1). ANT1



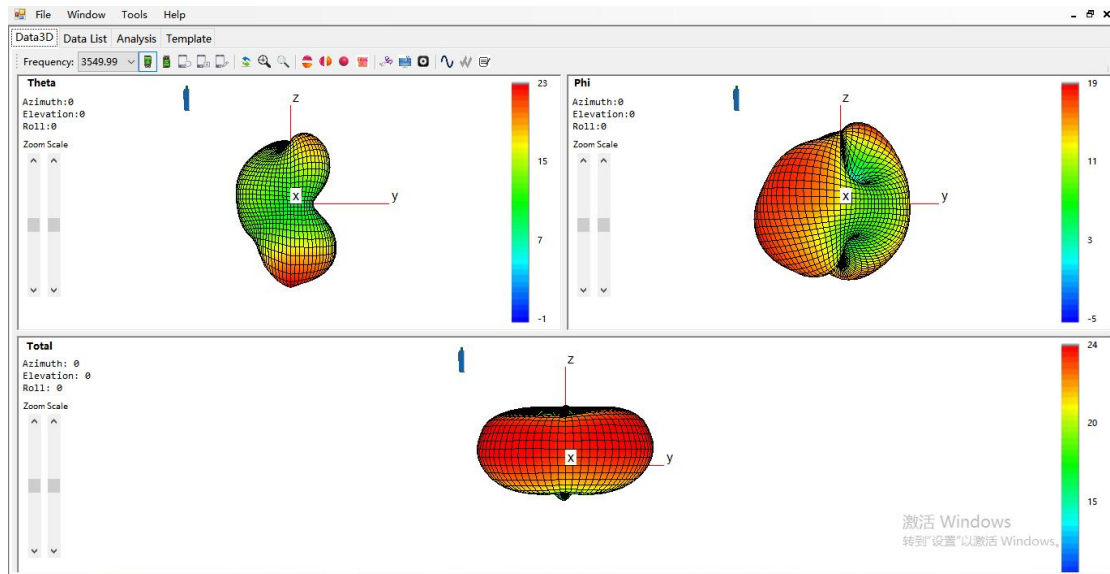
2). ANT2



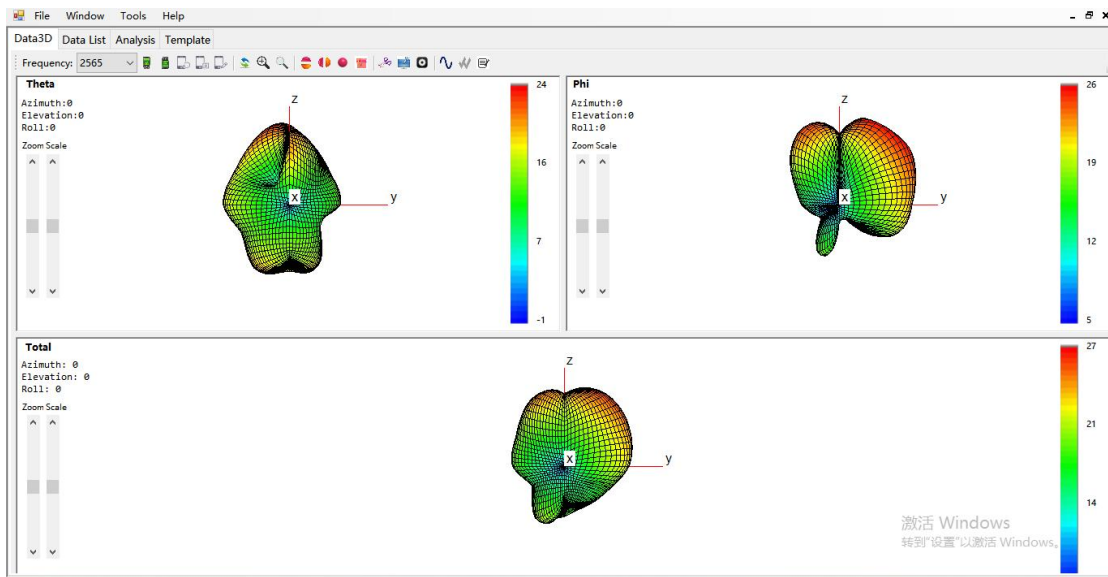
3). ANT3



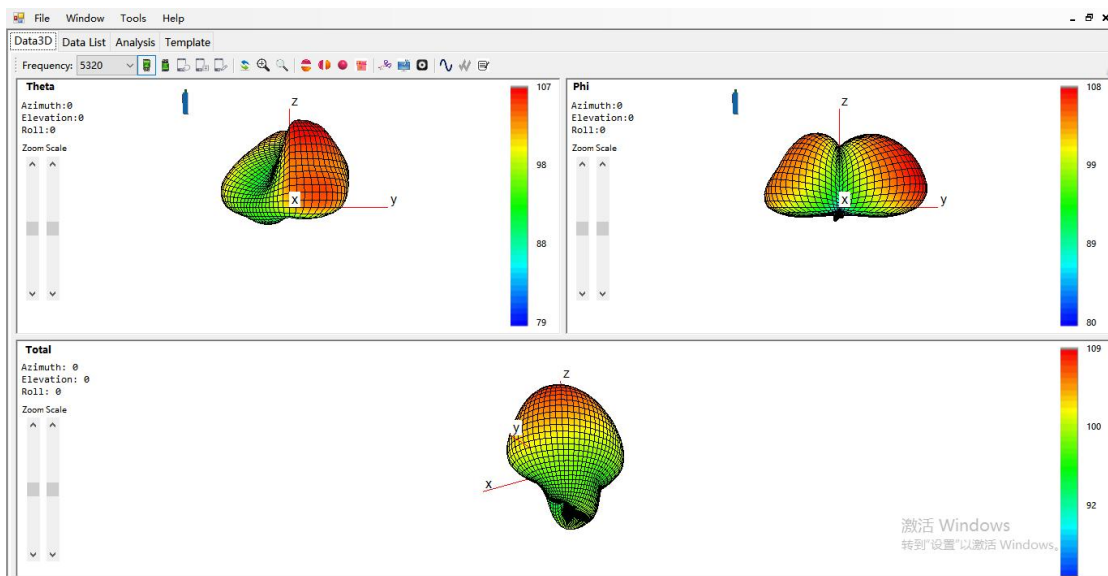
4). ANT4



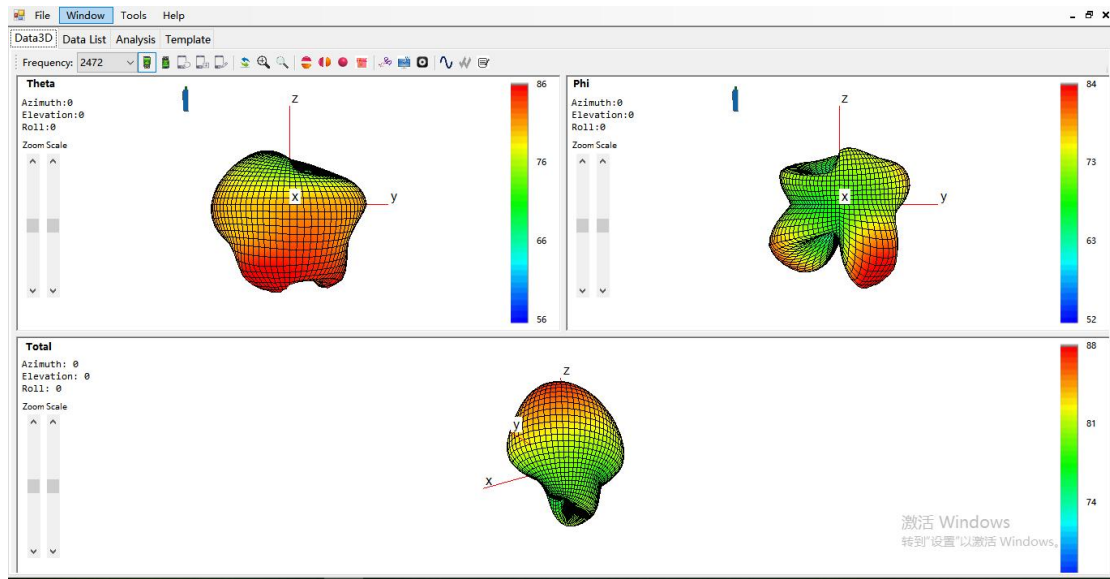
5). ANT5



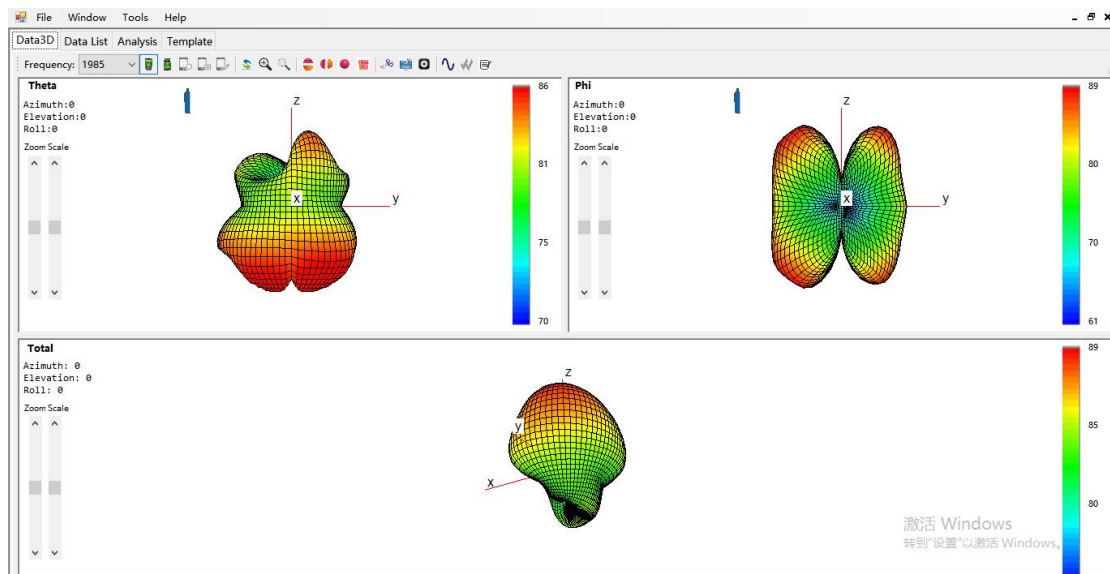
6). ANT6



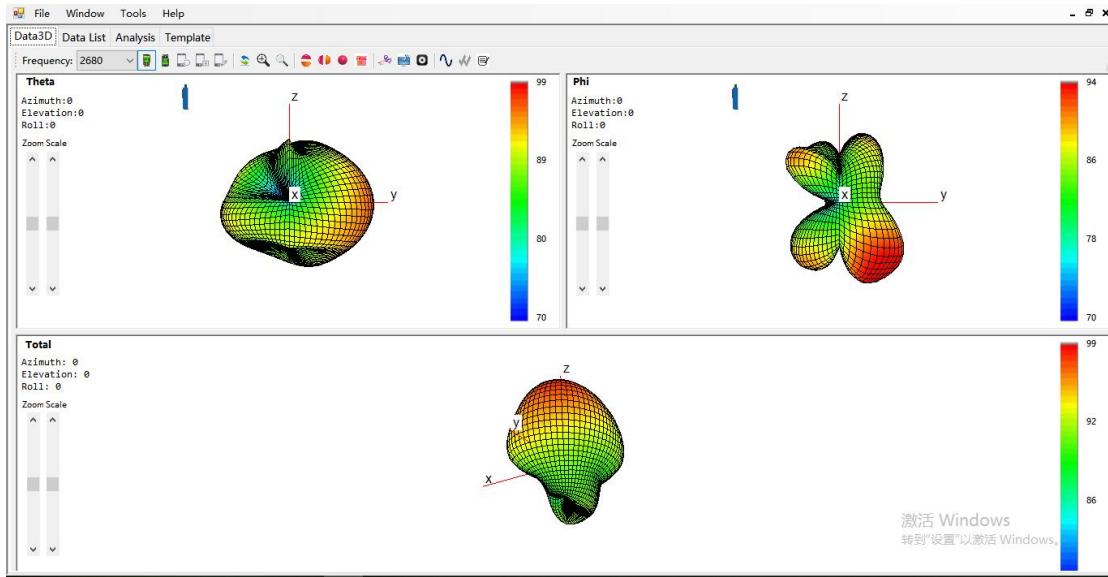
7). ANT7



8). ANT8



9). ANT9



4. ANT location map

