

1.Main Antenna:

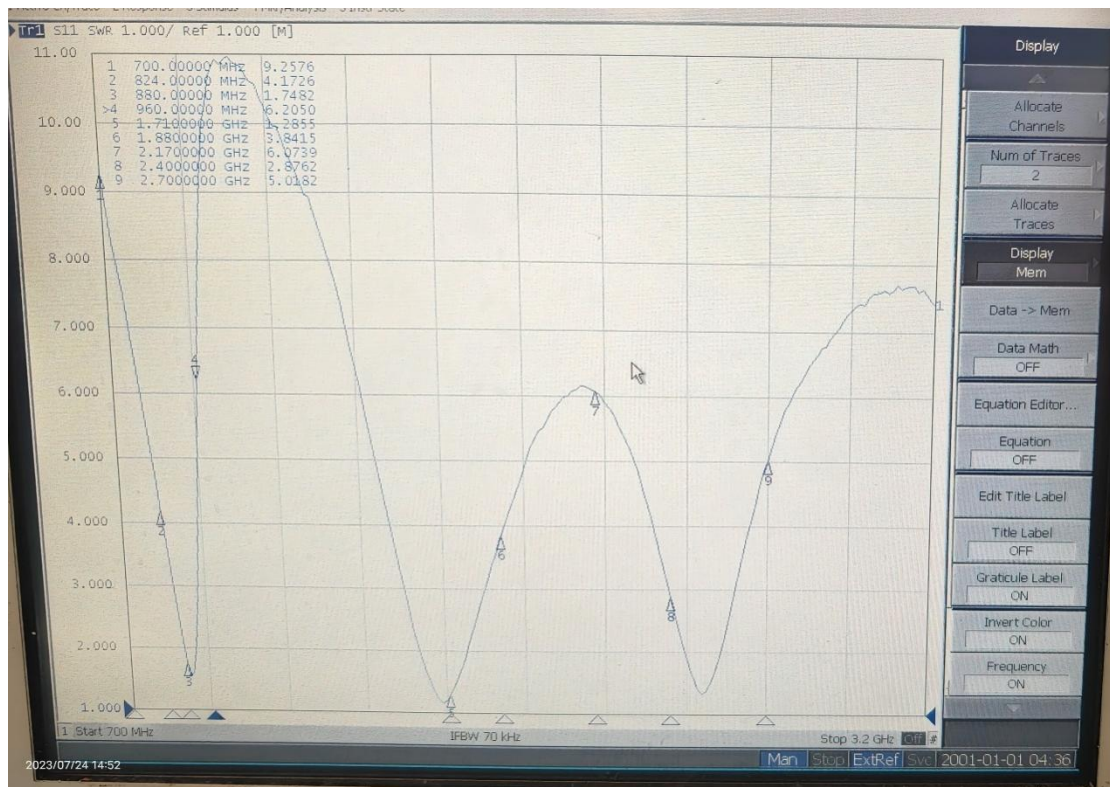
Support Bands:

GSM850/900/1800/1900;

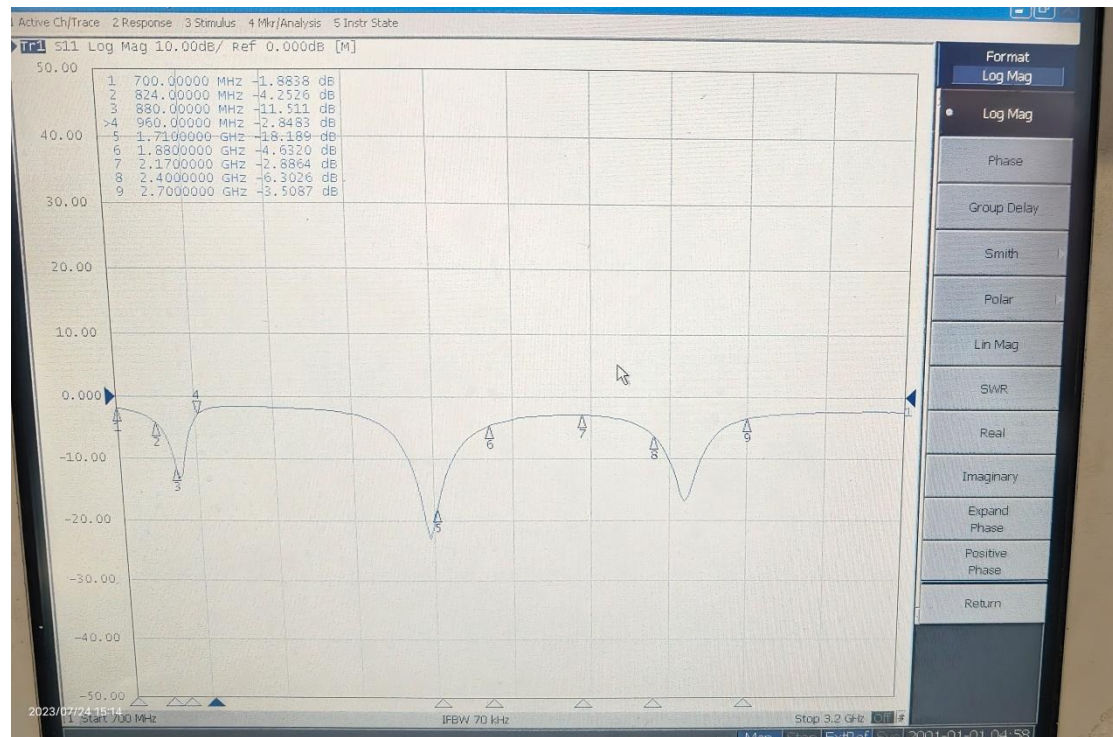
WCDMA B1/B2/B4/B5/B8;

LTEB1/B2/B3/B4/B5/B7/B8/B12/B13/B17/B28/B66;

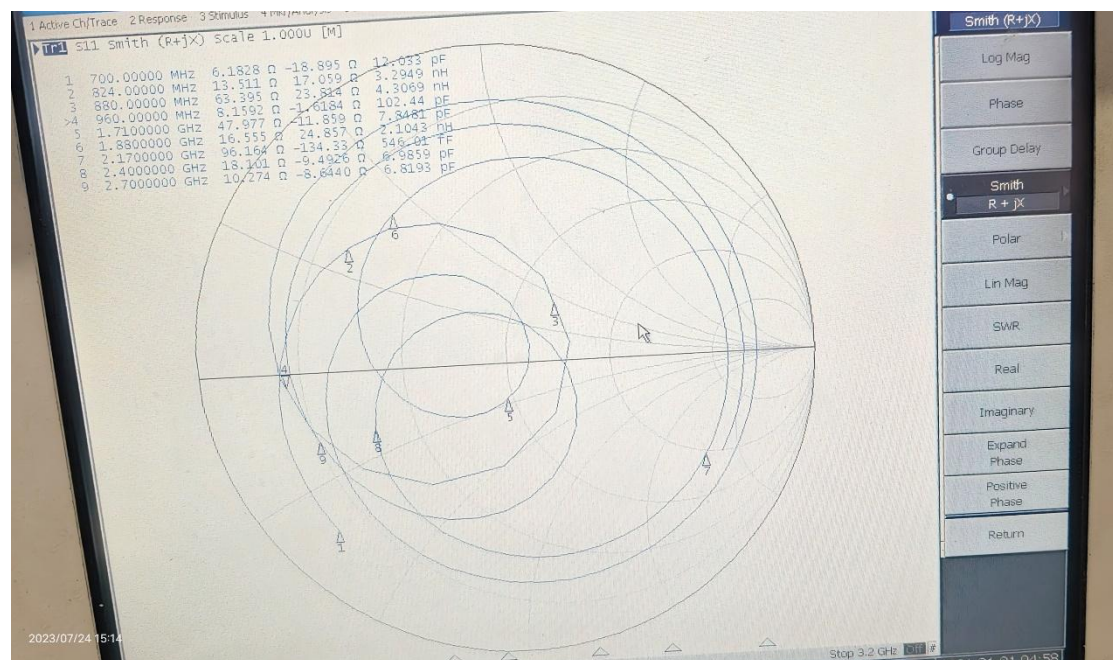
VSWR:



RL:



SMITH:



- Max gain of main antenna:
- GSM850/ WCDMA 5/ LTE B5: -5dbi;
- GSM900/ WCDMA 8/ LTE B8:-5dbi;
- PCS1900/WCDMA 2/LTE B2:0dbi;
- WCDMA 4/ LTE B4/LTE B66:-2dbi;
- LTE B12/LTE B13/LTE B17:-5dbi;
- LTE B28: -5dbi;

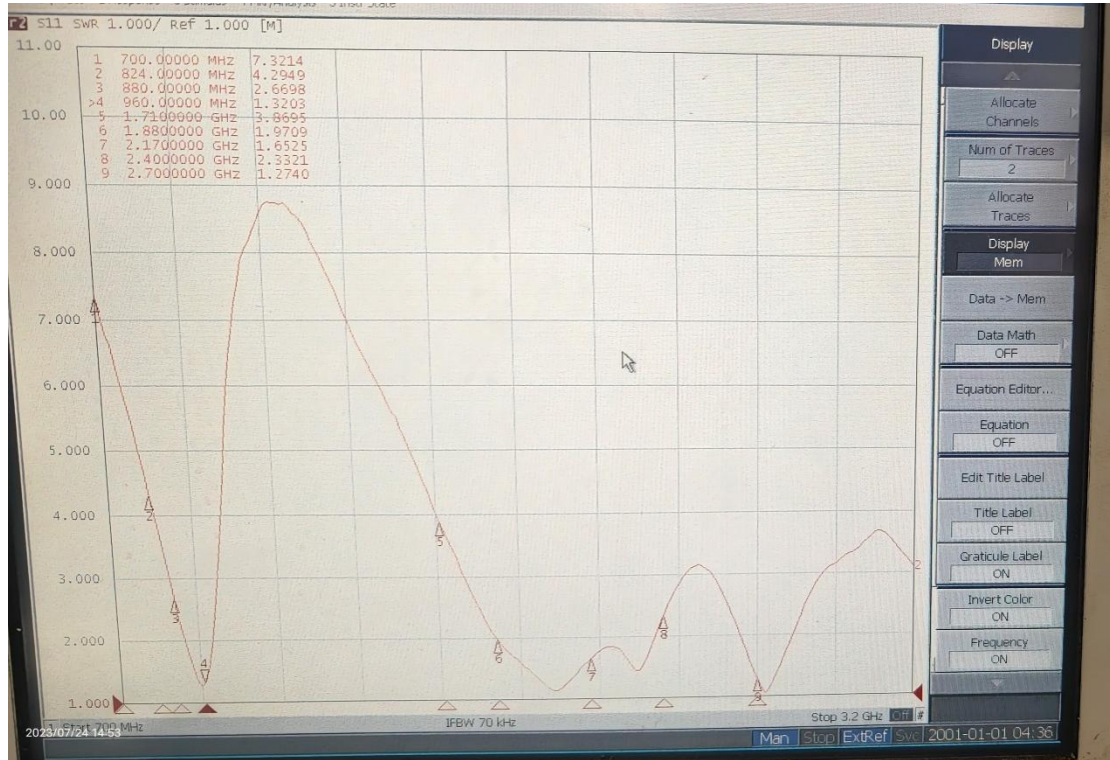
LTE B7:-1dbi;

WCDMA 1/ LTE B1:-1dbi;

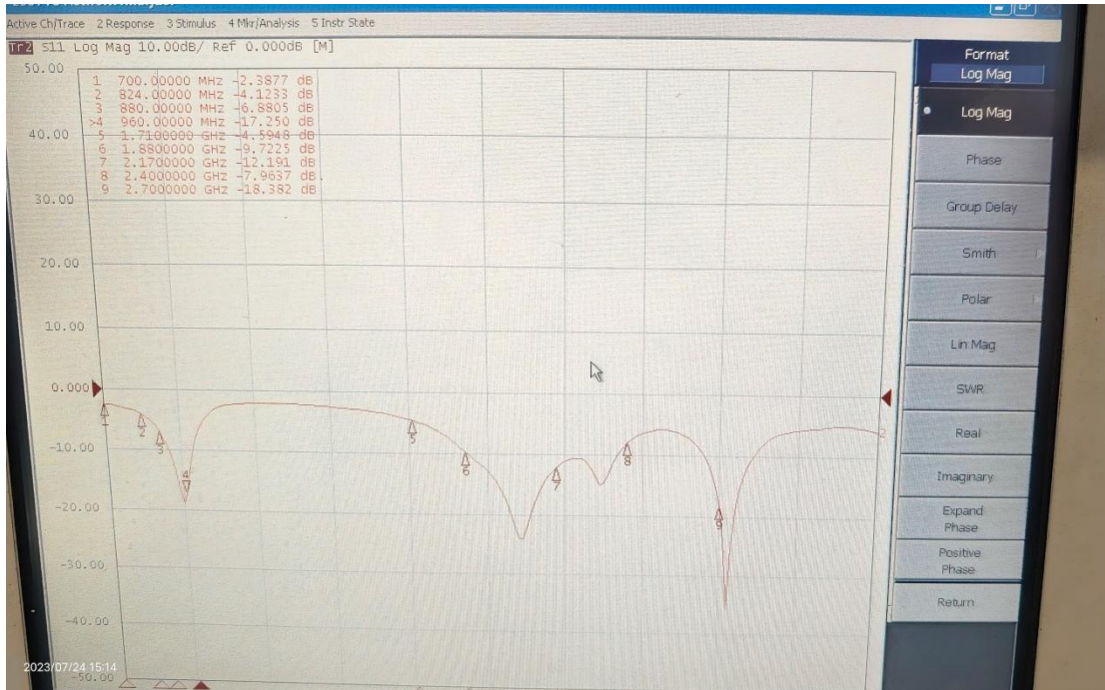
DCS1800/ LTE B3:-1dbi;

2.DIV Antenna

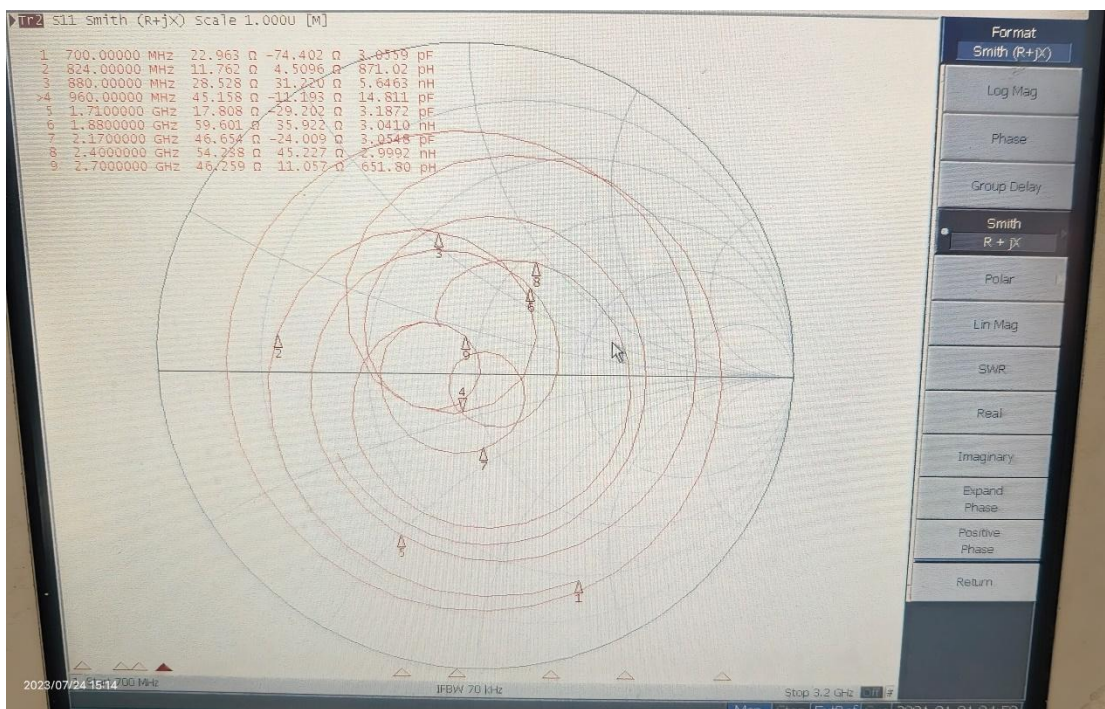
VSWR:



RL:



SMITH:



Max gain of div antenna:

GSM850/ WCDMA 5/ LTE B5: -5dbi;

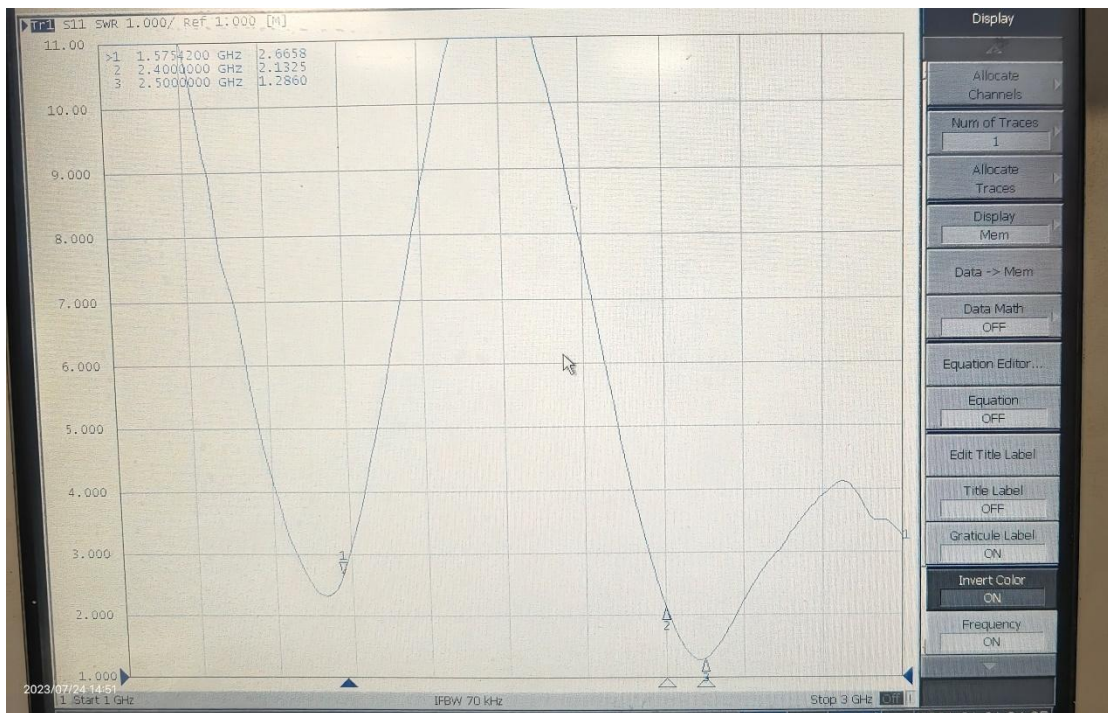
GSM900/ WCDMA 8/ LTE B8:-5dbi;

PCS1900/WCDMA 2/LTE B2:-4dbi;

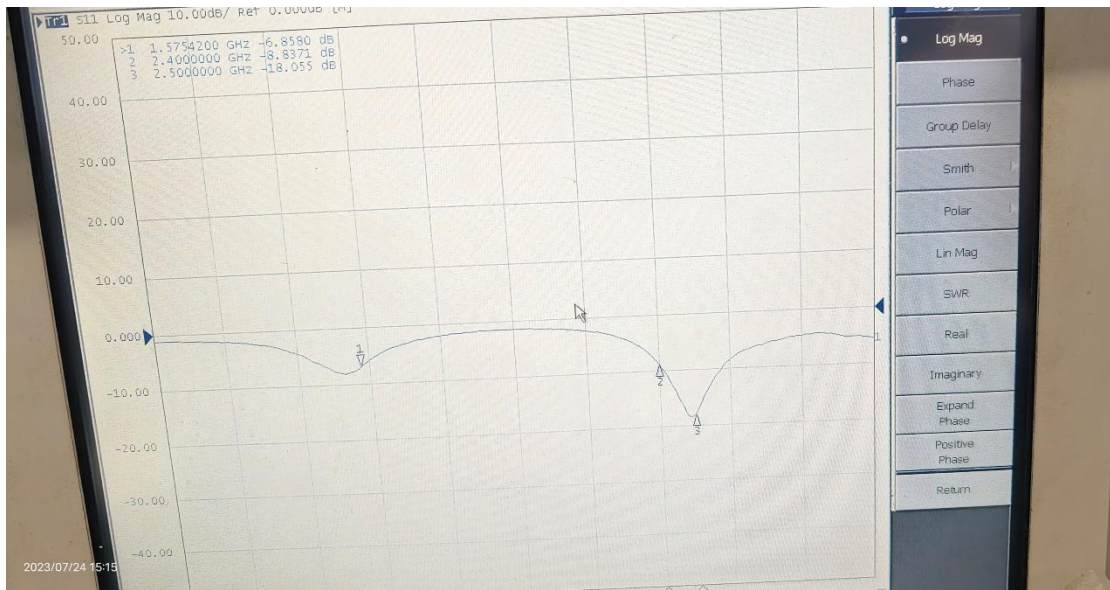
WCDMA 4/ LTE B4/LTE B66:-4dbi;
LTE B12/LTE B13/LTE B17:-5dbi;
LTE B28: -5dbi;
LTE B7:-1dbi;
WCDMA 1/ LTE B1:-4dbi;
DCS1800/ LTE B3:-4dbi;

3.GPS/BT/WIFI Antenna

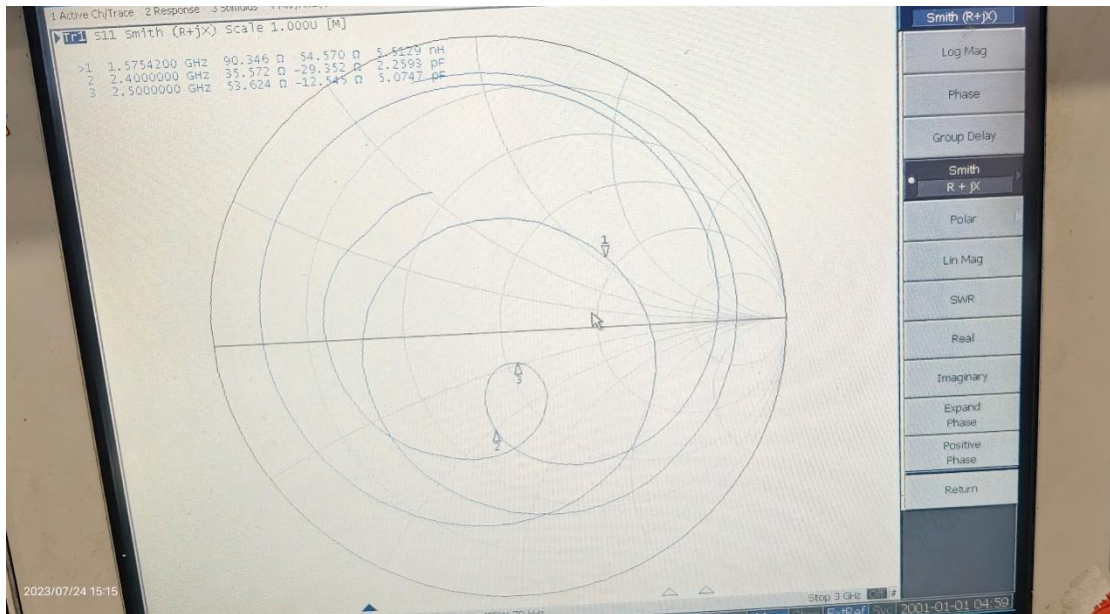
VSWR:



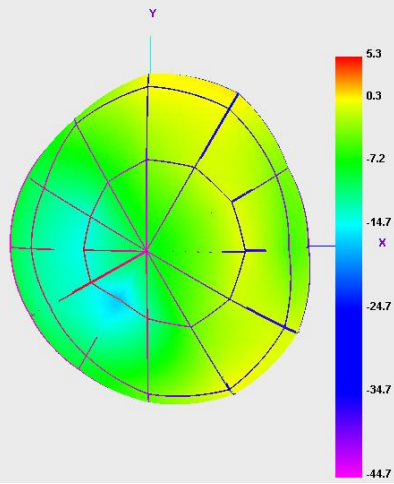
RL:



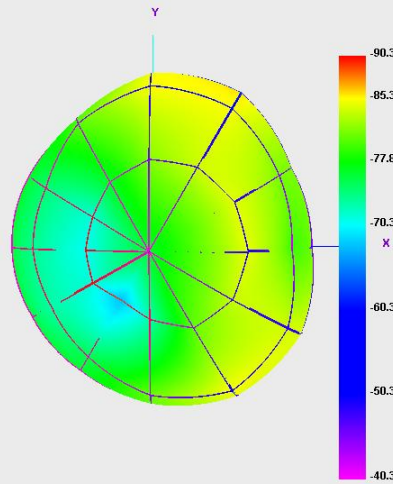
SMITH:



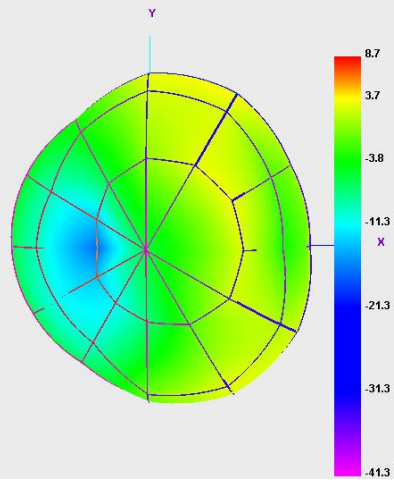
Bluetooth 0 TRP



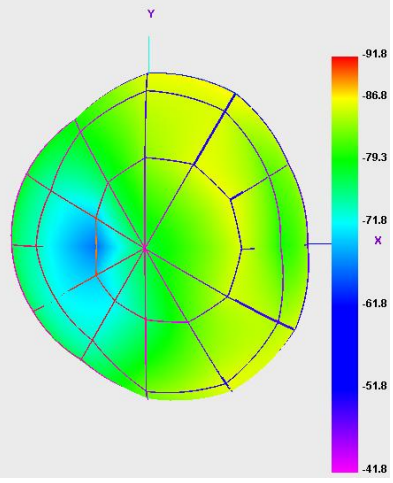
Bluetooth 0 TIS



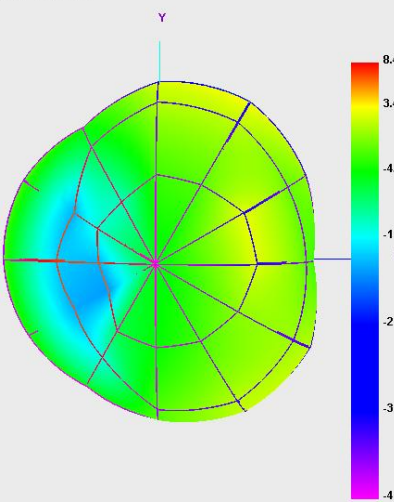
Bluetooth 39 TRP



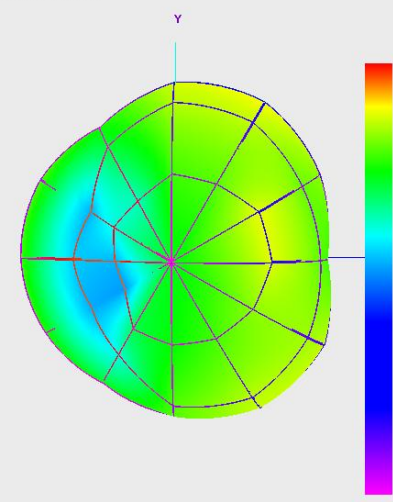
Bluetooth 39 TIS

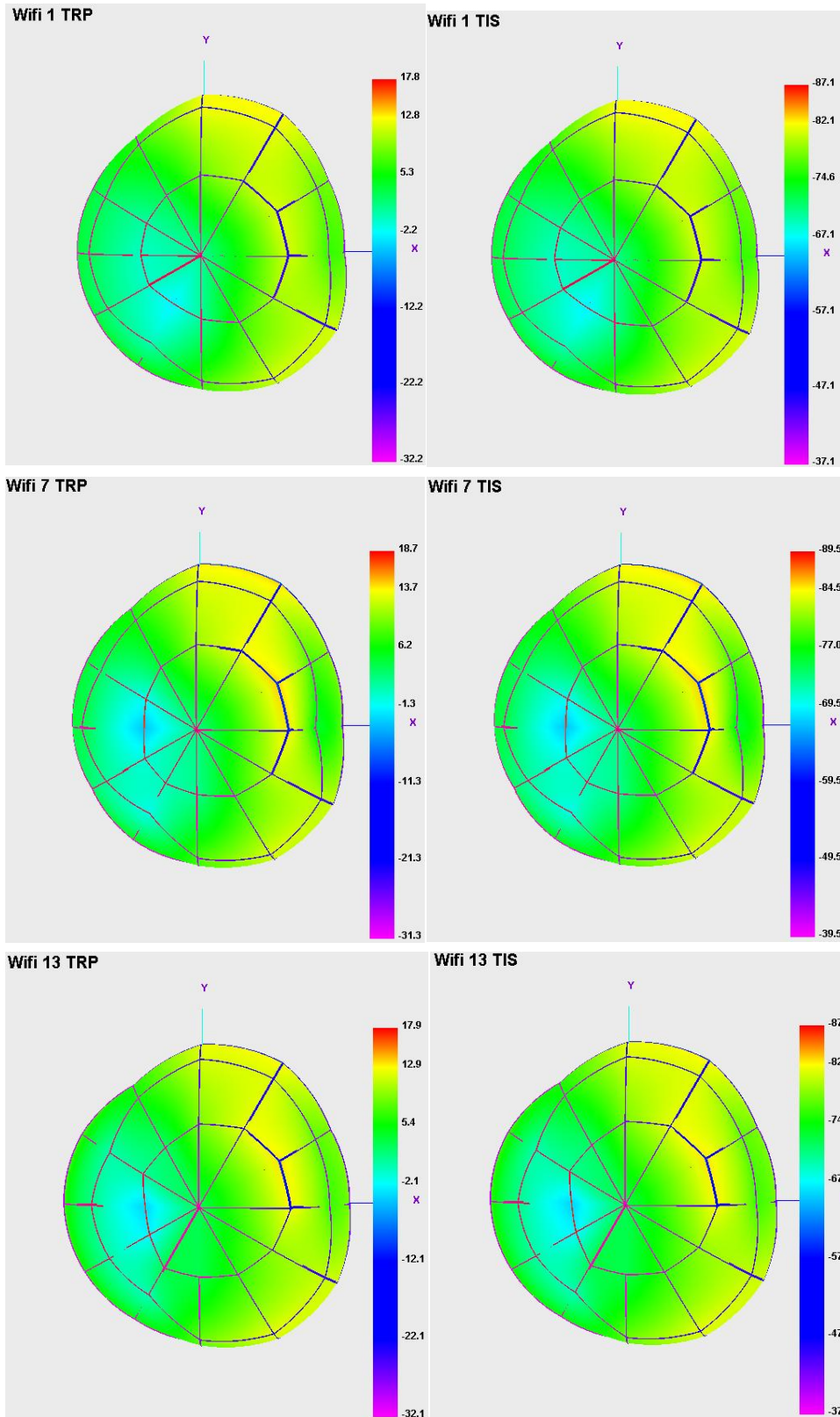


Bluetooth 78 TRP



Bluetooth 78 TIS





MAX gain about GPS/BT/WIFI antenna:

BT/2.4GWIFI: -2dBi;

GPS (1.57542Ghz) : -0.6dBi;