

ANNEX A – TEST PLOTS

Plots of System Check

Measurement Report for Device, FRONT, Validation band, CW, Channel 10000 (10000.0 MHz)

Device Under Test Properties

Model, Manufacturer	Dimensions [mm]	IMEI	DUT Type
Device,	100.0 x 100.0 x 100.0		Dipole

Exposure Conditions

Phantom Section	Position, Test Distance [mm]	Band	Group, UID	Frequency [MHz], Channel Number	Conversion Factor
5G	FRONT, 10.00	Validation band	CW, 0--	10000.0, 10000	1.0

Hardware Setup

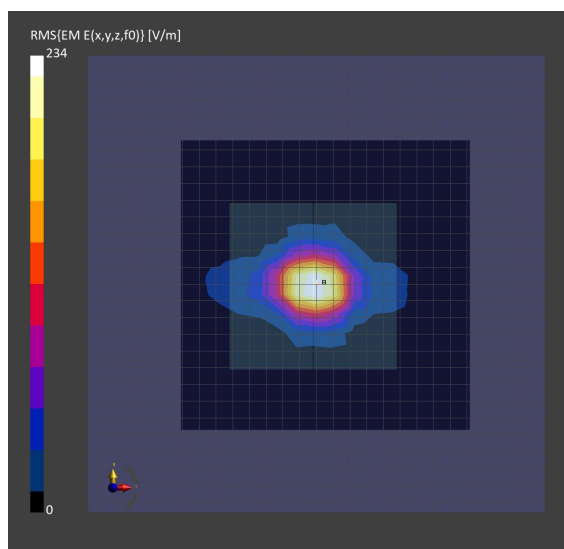
Phantom	Medium	Probe, Calibration Date	DAE, Calibration Date
mmWave - 1087	Air -	EUmmWV4 - SN9533_F1-55GHz, 2023-8-18	DAE4 Sn546, 2023-9-15

Scans Setup

Scan Type	5G
Scan	
Grid Extents [mm]	120.0 x 120.0
Grid Steps [lambda]	0.15 x 0.15
Sensor Surface [mm]	10.0
MAIA	N/A

Measurement Results

Scan Type	5G Scan
Date	2024-04-23, 12:53
Avg. Area [cm ²]	4.00
psPDn+ [W/m ²]	142
psPDtot+ [W/m ²]	145
psPDmod+ [W/m ²]	148
E _{max} [V/m]	234
Power Drift [dB]	-0.13



Measurement Report for Device, BACK, U-NII-5, IEEE 802.11ax (20MHz, MCS0, 90pc duty cycle), Channel 1 (5955.0 MHz)

Device Under Test Properties

Model, Manufacturer	Dimensions [mm]	IMEI	DUT Type
Device,	165.0 x 75.0 x 9.0		Phone

Exposure Conditions

Phantom Section	Position, Test Distance [mm]	Band	Group, UID	Frequency [MHz], Channel Number	Conversion Factor
5G	BACK, 2.00	U-NII-5	WLAN, 10683-AAC	5955.0, 1	1.0

Hardware Setup

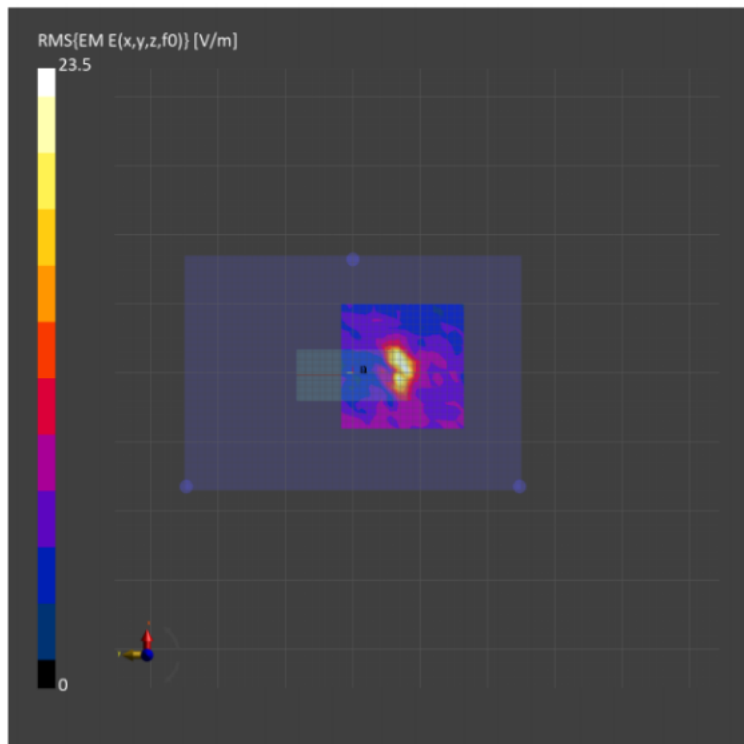
Phantom	Medium	Probe, Calibration Date	DAE, Calibration Date
mmWave - 1087	Air -	EUmmWV4 - SN9603_F1-55GHz, 2023-8-18	DAE4 Sn546, 2023-09-14

Scans Setup

Scan Type	5G Scan
Grid Extents [mm]	25.0 x 25.0
Grid Steps [lambda]	0.25 x 0.25
Sensor Surface [mm]	2.0
MAIA	Y

Measurement Results

Scan Type	5G Scan
Date	2024-04-23, 16:40
Avg. Area [cm ²]	4.00
psPDn+ [W/m ²]	0.383
psPDtot+ [W/m ²]	0.517
psPDmod+ [W/m ²]	0.584
E _{max} [V/m]	23.5
Power Drift [dB]	0.01



Measurement Report for Device, BACK, U-NII-5, IEEE 802.11 ax (20MHz, MCS0, 90c duty cycle), Channel 93 (6415.0 MHz)

Device Under Test Properties

Model, Manufacturer	Dimensions [mm]	IMEI	DUT Type
Device,	160.0 x 75.0 x 9.0		Phone

Exposure Conditions

Phantom Section	Position, Test Distance [mm]	Band	Group, UID	Frequency [MHz], Channel Number	Conversion Factor
5G	BACK, 2.00	U-NII-5	WLAN, 10683-AAC	6415.0, 93	1.0

Hardware Setup

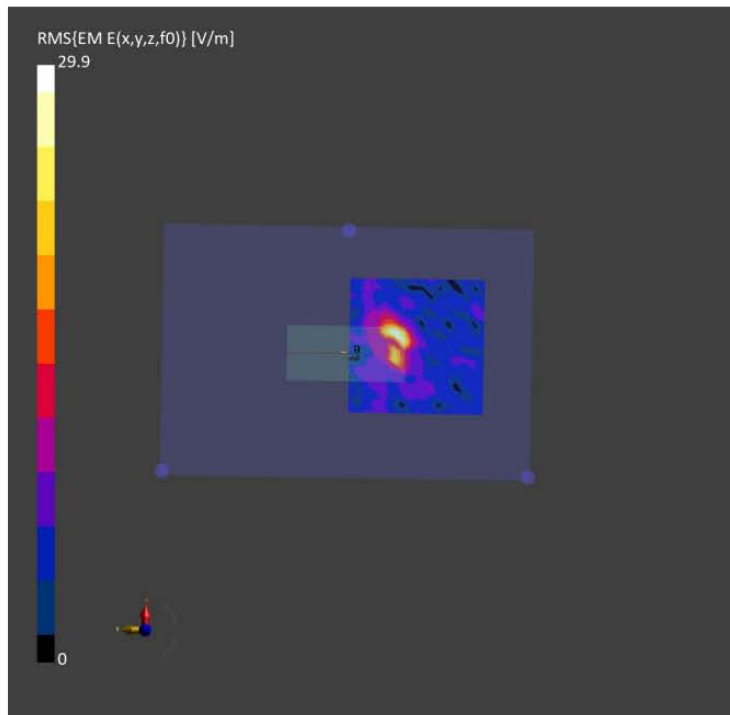
Phantom	Medium	Probe, Calibration Date	DAE, Calibration Date
mmWave - 1087	Air -	EUmmWV4 - SN9533_F1-55GHz,2023-8-18	DAE4 Sn546, 2023-09-14

Scans Setup

Scan Type	5G Scan
Grid Extents [mm]	25.0 x 25.0
Grid Steps [lambda]	0.25 x 0.25
Sensor Surface [mm]	2.0
MAIA	Y

Measurement Results

Scan Type	5G Scan
Date	2024-04-23, 11:21
Avg. Area [cm ²]	4.00
psPDn+ [W/m ²]	0.438
psPDtot+ [W/m ²]	0.607
psPDmod+ [W/m ²]	0.764
E _{max} [V/m]	29.9
Power Drift [dB]	0.09



Measurement Report for Device, BACK, U-NII-6, IEEE 802.11ax (20MHz, MCS0, 90pc duty cycle), Channel 113 (6515.0 MHz)

Device Under Test Properties

Model, Manufacturer	Dimensions [mm]	IMEI	DUT Type
Device,	160.0 x 75.0 x 9.0		Phone

Exposure Conditions

Phantom Section	Position, Test Distance [mm]	Band	Group, UID	Frequency [MHz], Channel Number	Conversion Factor
5G	BACK, 2.00	U-NII-6	WLAN, 10683-AAC	6515.0, 113	1.0

Hardware Setup

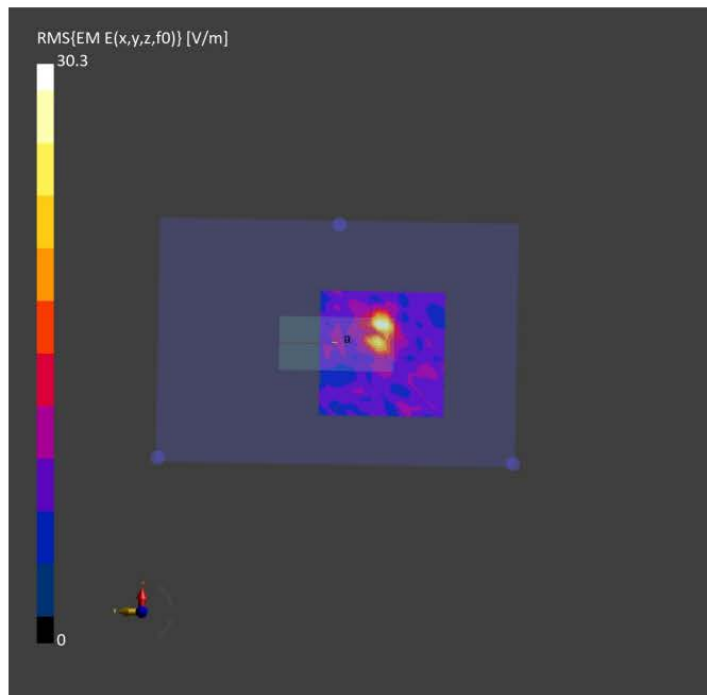
Phantom	Medium	Probe, Calibration Date	DAE, Calibration Date
mmWave - 1087	Air -	EUmmWV4 - SN9533_F1-55GHz,2023-8-18	DAE4 Sn546, 2023-09-14

Scans Setup

Scan Type	5G Scan
Grid Extents [mm]	25.0 x 25.0
Grid Steps [lambda]	0.25 x 0.25
Sensor Surface [mm]	2.0
MAIA	Y

Measurement Results

Scan Type	5G Scan
Date	2024-04-23, 11:55
Avg. Area [cm ²]	4.00
psPDn+ [W/m ²]	0.820
psPDtot+ [W/m ²]	0.891
psPDmod+ [W/m ²]	0.986
E _{max} [V/m]	30.3
Power Drift [dB]	-0.08



Measurement Report for Device, BACK, U-NII-7, IEEE 802.11ax (80Hz, MCS0, 90pc duty cycle), Channel 119 (6545.0 MHz)

Device Under Test Properties

Model, Manufacturer	Dimensions [mm]	IMEI	DUT Type
Device,	160.0 x 75.0 x 9.0		Phone

Exposure Conditions

Phantom Section	Position, Test Distance [mm]	Band	Group, UID	Frequency [MHz], Channel Number	Conversion Factor
5G	BACK, 2.00	U-NII-7	WLAN, 10683-AAC	6545.0, 119	1.0

Hardware Setup

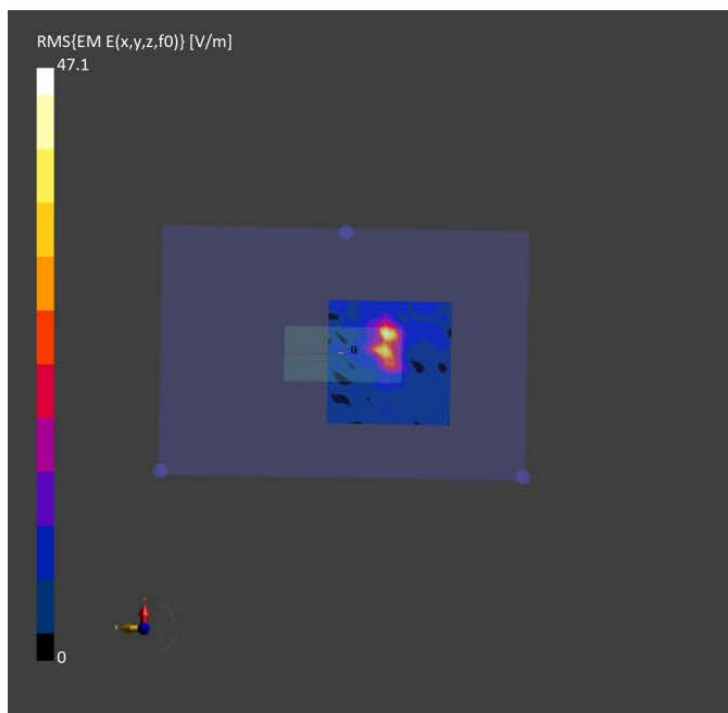
Phantom	Medium	Probe, Calibration Date	DAE, Calibration Date
mmWave - 1087	Air -	EUmmWV4 - SN9533_F1-55GHz,2023-8-18	DAE4 Sn546, 2023-09-14

Scans Setup

Scan Type	5G Scan
Grid Extents [mm]	25.0 x 25.0
Grid Steps [lambda]	0.25 x 0.25
Sensor Surface [mm]	2.0
MAIA	Y

Measurement Results

Scan Type	5G Scan
Date	2024-04-23, 13:14
Avg. Area [cm ²]	4.00
psPDn+ [W/m ²]	0.839
psPDtot+ [W/m ²]	1.17
psPDmod+ [W/m ²]	1.55
E _{max} [V/m]	47.1
Power Drift [dB]	-0.06



Measurement Report for Device, BACK, U-NII-8, IEEE 802.11ax (20MHz, MCS0, 90c duty cycle), Channel 209 (6995.0 MHz)

Device Under Test Properties

Model, Manufacturer	Dimensions [mm]	IMEI	DUT Type
Device,	160.0 x 75.0 x 9.0		Phone

Exposure Conditions

Phantom Section	Position, Test Distance [mm]	Band	Group, UID	Frequency [MHz], Channel Number	Conversion Factor
5G	BACK, 2.00	U-NII-8	WLAN, 10683-AAC	6995.0, 209	1.0

Hardware Setup

Phantom	Medium	Probe, Calibration Date	DAE, Calibration Date
mmWave - 1087	Air -	EUmmWV4 - SN9533_F1-55GHz,2023-8-18	DAE4 Sn546, 2023-09-14

Scans Setup

Scan Type	5G Scan
Grid Extents [mm]	25.0 x 25.0
Grid Steps [lambda]	0.25 x 0.25
Sensor Surface [mm]	2.0
MAIA	Y

Measurement Results

Scan Type	5G Scan
Date	2024-04-23, 13:47
Avg. Area [cm ²]	4.00
psPDn+ [W/m ²]	1.09
psPDtot+ [W/m ²]	1.24
psPDmod+ [W/m ²]	1.59
E _{max} [V/m]	37.2
Power Drift [dB]	0.18

