

System check	6500MHz
---------------------	----------------

Measurement Report for Device, FRONT, Validation band, CW, Channel 6500 (6500.0 MHz)

Device Under Test Properties

Model, Manufacturer	Dimensions [mm]	IMEI	DUT Type
Device,	6.0 x 16.0 x 300.0		dipole

Exposure Conditions

Phantom Section, TSL	Position, Test Distance [mm]	Band	Group, UID	Frequency [MHz], Channel Number	Conversion Factor	TSL Conductivity [S/m]	TSL Permittivity
Flat, HSL	FRONT, 5.00	Validation band	CW, 0--	6500.0, 6500	5.57	6.08	34.0

Hardware Setup

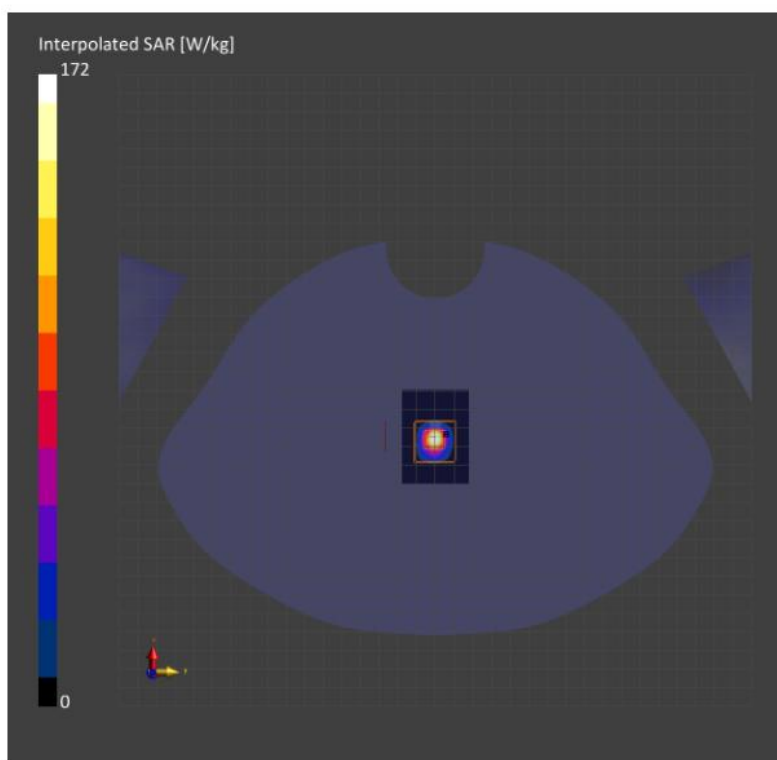
Phantom	TSL, Measured Date	Probe, Calibration Date	DAE, Calibration Date
Twin-SAM V4.0 (30deg probe tilt) - 1559	HBBL-600-10000 Charge:xxxx, --	EX3DV4 - SN3708, 2023-10-28	DAE4 Sn546, 2023-9-15

Scans Setup

	Area Scan	Zoom Scan
Grid Extents [mm]	51.0 x 36.0	22.0 x 22.0 x 22.0
Grid Steps [mm]	8.5 x 6.0	3.4 x 3.4 x 1.4
Sensor Surface [mm]	3.0	1.4
Graded Grid	Yes	Yes
Grading Ratio	1.5	1.4
MAIA	N/A	N/A
Surface Detection	VMS + 6p	VMS + 6p
Scan Method	Measured	Measured

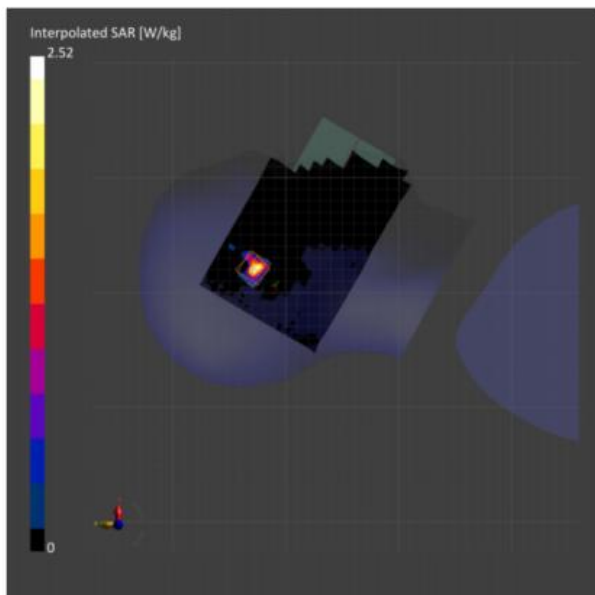
Measurement Results

	Area Scan	Zoom Scan
psSAR1g [W/Kg]	24.1	27.0
psSAR10g [W/Kg]	4.94	5.09
Power Drift [dB]	0.00	0.01
Power Scaling	Disabled	Disabled
Scaling Factor [dB]		
TSL Correction	No correction	No correction
M2/M1 [%]		50.7
Dist 3dB Peak [mm]		4.4



Wi-Fi6E

LEFT HEAD				CHEEK					
Measurement Report for Device, CHEEK, U-NII-5, IEEE 802.11ax (20MHz, MCS0, 90pc duty cycle), Channel 93 (6415.0 MHz)									
Device Under Test Properties									
Model, Manufacturer		Dimensions [mm]		IMEI		DUT Type			
Device,		160.0 x 75.0 x 9.0				Phone			
Exposure Conditions									
Phantom Section, TSL	Position, Test Distance [mm]	Band	Group, UID	Frequency [MHz], Channel Number	Conversion Factor	TSL Conductivity [S/m]	TSL Permittivity		
LeftHead, HSL	CHEEK, 1.40	U-NII-5	WLAN, 10683-AAC	6415.0, 93	5.65	5.70	34.8		
Hardware Setup									
Phantom		TSL, Measured Date		Probe, Calibration Date		DAE, Calibration Date			
Twin-SAM V5.0 (30deg probe tilt) - 1559		HBBL-600-10000 Charge:xxxx, 2024-Apr-18		EX3DV4 - SN3708, 2023-10-30		DAE4 Sn546, 2023-09-15			
Scans Setup				Measurement Results					
	Area Scan		Zoom Scan			Area Scan		Zoom Scan	
Grid Extents [mm]	119.0 x 204.0		22.0 x 22.0 x 22.0		psSAR1g [W/Kg]	0.064		0.134	
Grid Steps [mm]	8.5 x 8.5		3.4 x 3.4 x 1.4		psSAR10g [W/Kg]	0.023		0.029	
Sensor Surface [mm]	3.0		1.4		Power Drift [dB]	0.02		-0.03	
Graded Grid	Yes		Yes		Power Scaling	Disabled		Disabled	
Grading Ratio	1.5		1.4		Scaling Factor [dB]				
MAIA	Y		Y		TSL Correction	No correction		No correction	
Surface Detection	All points		All points		M2/M1 [%]			45.4	
Scan Method	Measured		Measured		Dist 3dB Peak [mm]			5.8	



Wi-Fi6E

Body	Back
-------------	-------------

Measurement Report for Device, BACK, U-NII-6, IEEE 802.11ax (20MHz, MCS0, 90pc duty cycle), Channel 113 (6515.0 MHz)

Device Under Test Properties

Model, Manufacturer	Dimensions [mm]	IMEI	DUT Type
Device,	160.0 x 75.0 x 9.0		Phone

Exposure Conditions

Phantom Section, TSL	Position, Test Distance [mm]	Band	Group, UID	Frequency [MHz], Channel Number	Conversion Factor	TSL Conductivity [S/m]	TSL Permittivity
Flat, HSL	BACK, 10.00	U-NII-6	WLAN, 10683-AAC	6515.0, 113	5.65	6.08	34.0

Hardware Setup

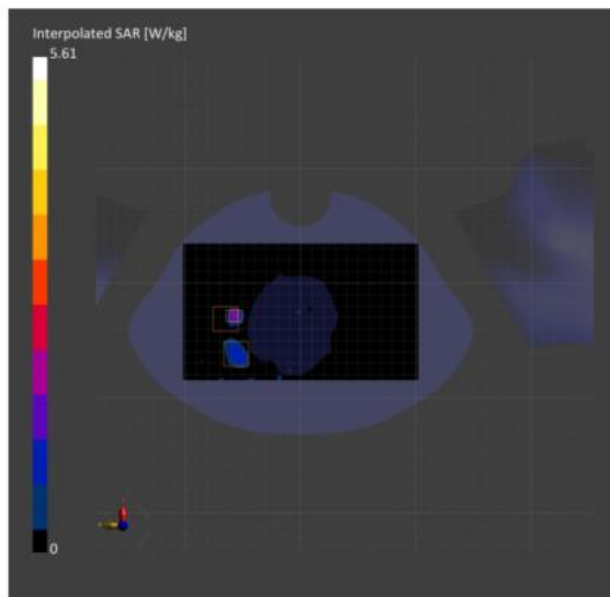
Phantom	TSL, Measured Date	Probe, Calibration Date	DAE, Calibration Date
Twin-SAM V5.0 (30deg probe tilt) - 1559	HBBL-600-10000 Charge:xxxx, --	EX3DV4 - SN3708, 2023-10-30	DAE4 Sn546, 2023-09-15

Scans Setup

	Area Scan	Zoom Scan
Grid Extents [mm]	119.0 x 204.0	22.0 x 22.0 x 22.0
Grid Steps [mm]	8.5 x 8.5	3.4 x 3.4 x 1.4
Sensor Surface [mm]	3.0	1.4
Graded Grid	Yes	Yes
Grading Ratio	1.5	1.4
MAIA	Y	Y
Surface Detection	All points	All points
Scan Method	Measured	Measured

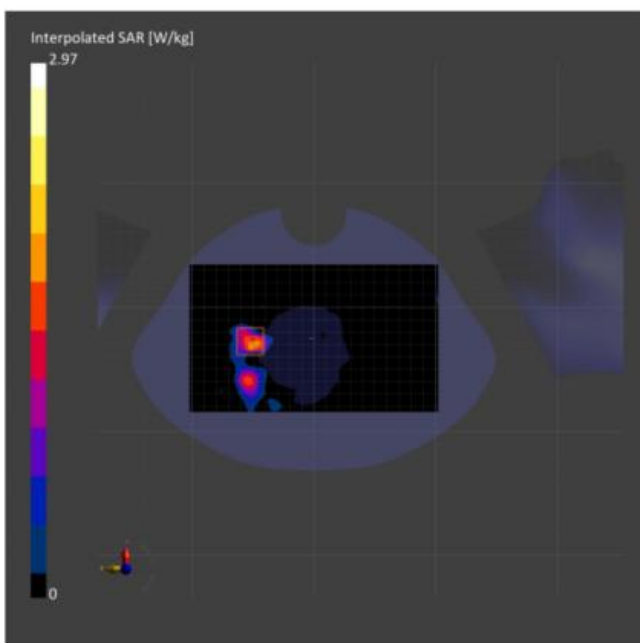
Measurement Results

	Area Scan	Zoom Scan
psSAR1g [W/Kg]	0.060	0.066
psSAR10g [W/Kg]	0.018	0.019
Power Drift [dB]	0.03	0.01
Power Scaling	Disabled	Disabled
Scaling Factor [dB]		
TSL Correction	No correction	No correction
M2/M1 [%]		43.1
Dist 3dB Peak [mm]		> 11.0



Wi-Fi6E

Body				Back					
Measurement Report for Device, BACK, U-NII-7, IEEE 802.11ax (20MHz, MCS0, 90pc duty cycle), Channel 119 (6545.0 MHz)									
Device Under Test Properties									
Model, Manufacturer		Dimensions [mm]		IMEI	DUT Type				
Device,		160.0 x 75.0 x 9.0			Phone				
Exposure Conditions									
Phantom Section, TSL	Position, Test Distance [mm]	Band	Group, UID	Frequency [MHz], Channel Number	Conversion Factor	TSL Conductivity [S/m]	TSL Permittivity		
Flat, HSL	BACK, 10.00	U-NII-7	WLAN, 10683-AAC	6545.0, 119	5.65	6.39	33.6		
Hardware Setup									
Phantom		TSL, Measured Date		Probe, Calibration Date		DAE, Calibration Date			
Twin-SAM V5.0 (30deg probe tilt) - 1559		HBBL-600-10000 Charge:xxxx, --		EX3DV4 - SN3708, 2023-10-30		DAE4 Sn546, 2023-09-15			
Scans Setup				Measurement Results					
	Area Scan		Zoom Scan			Area Scan		Zoom Scan	
Grid Extents [mm]	119.0 x 204.0		22.0 x 22.0 x 22.0		psSAR1g [W/Kg]	0.073		0.098	
Grid Steps [mm]	8.5 x 8.5		3.4 x 3.4 x 1.4		psSAR10g [W/Kg]	0.024		0.026	
Sensor Surface [mm]	3.0		1.4		Power Drift [dB]	-0.05		0.07	
Graded Grid	Yes		Yes		Power Scaling	Disabled		Disabled	
Grading Ratio	1.5		1.4		Scaling Factor [dB]				
MAIA	Y		Y		TSL Correction	No correction		No correction	
Surface Detection	All points		All points		M2/M1 [%]			46.9	
Scan Method	Measured		Measured		Dist 3dB Peak [mm]			6.1	



Wi-Fi6E

Body	Back
-------------	-------------

Measurement Report for Device, BACK, U-NII-8, IEEE 802.11 ax (20MHz, MCS0, 90pc duty cycle), Channel 209 (6995.0 MHz)

Device Under Test Properties

Model, Manufacturer	Dimensions [mm]	IMEI	DUT Type
Device,	160.0 x 75.0 x 9.0		Phone

Exposure Conditions

Phantom Section, TSL	Position, Test Distance [mm]	Band	Group, UID	Frequency [MHz], Channel Number	Conversion Factor	TSL Conductivity [S/m]	TSL Permittivity
Flat, HSL	BACK, 10.00	U-NII-8	WLAN, 10683-AAC	6995.0, 209	5.65	6.66	33.9

Hardware Setup

Phantom	TSL, Measured Date	Probe, Calibration Date	DAE, Calibration Date
Twinn-SAM V5.0 (30deg probe tilt) - 1559	H8BL-600-10000 Charge:xxxx, 2024-Apr-18	EX3DV4 - SN3708, 2023-10-30	DAE4 Sn546, 2023-09-15

Scans Setup

	Area Scan	Zoom Scan
Grid Extents [mm]	105.0 x 195.0	22.0 x 22.0 x 22.0
Grid Steps [mm]	7.5 x 7.5	3.0 x 3.0 x 1.4
Sensor Surface [mm]	3.0	1.4
Graded Grid	Yes	Yes
Grading Ratio	1.5	1.4
MAIA	Y	Y
Surface Detection	All points	All points
Scan Method	Measured	Measured

Measurement Results

	Area Scan	Zoom Scan
psSAR1g [W/Kg]	0.149	0.156
psSAR10g [W/Kg]	0.038	0.040
Power Drift [dB]	-0.09	-0.07
Power Scaling	Disabled	Disabled
Scaling Factor [dB]		
TSL Correction	No correction	No correction
M2/M1 [%]		46.6
Dist 3dB Peak [mm]		5.4

