

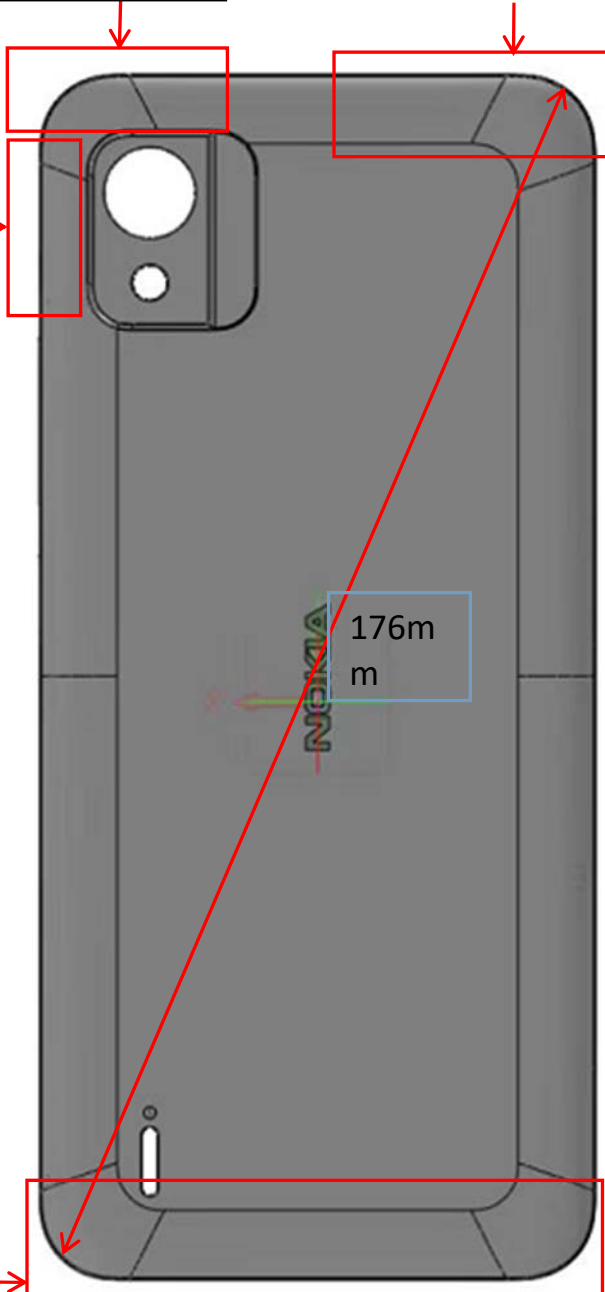
N156DL Antenna Report

1. Antenna Location

ANT3
GPS+2.4G
32.0mm*15.0mm

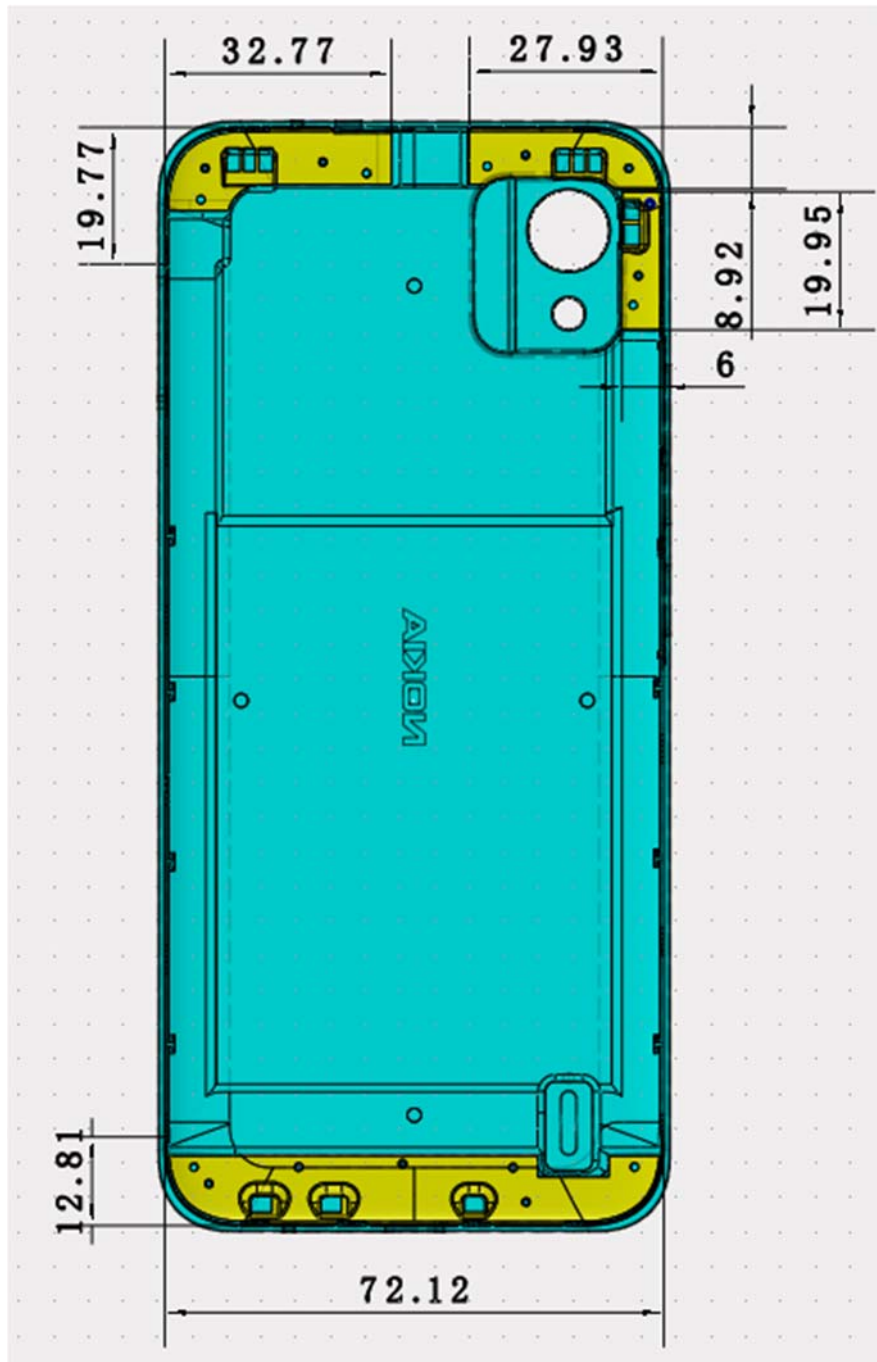
ANT2
2G: GSM850/1900
3G: WCDMA B2/4/5
4G: LTE B2/4/5/12/13/66
/71/41
58.1mm*24.4mm

ANT4
5G WIFI
19.7mm*10.5
mm



ANT1
2G: GSM850/1900
3G: WCDMA B2/4/5
4G: LTE B2/4/5/12/13/66
/71/41
88.5mm*17.3 mm

2. Antenna Pattern



3. Antenna Passive Gain

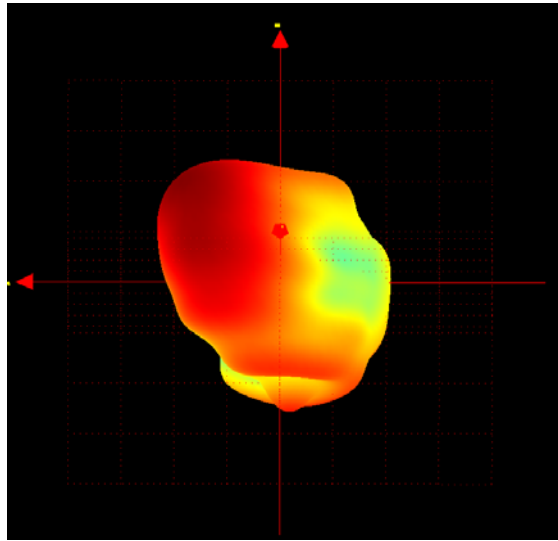
Band	Main Antenna(dBi)-ANT1		Div Antenna(dBi)-ANT2	
	Peak	Average	Peak	Average
GSM 850	-2.3	-6.7	-2.7	-6.6
GSM 1900	2.0	-3.5	-0.1	-3.8
WCDMA B2	2.0	-3.5	-0.1	-3.8
WCDMA B4	2.0	-3.4	1.7	-3.2
WCDMA B5	-2.3	-6.7	-2.7	-6.6
LTE B2	2.0	-3.5	-0.1	-3.8
LTE B4	2.0	-3.4	1.7	-3.2
LTE B5	-2.3	-6.7	-2.7	-6.6
LTE B12	-2.1	-5.6	-5.3	-8.5
LTE B13	-2.9	-6.7	-4.6	-8.2
LTE B66	2.1	-3.4	0.8	-2.8
LTE B71	-2.5	-5.7	-7.8	-10.1

Band	Antenna(dBi)-ANT3	
	Peak	Average
GPS	2.3	-3.9
BT/2.4gWiFi	3.2	-4.0

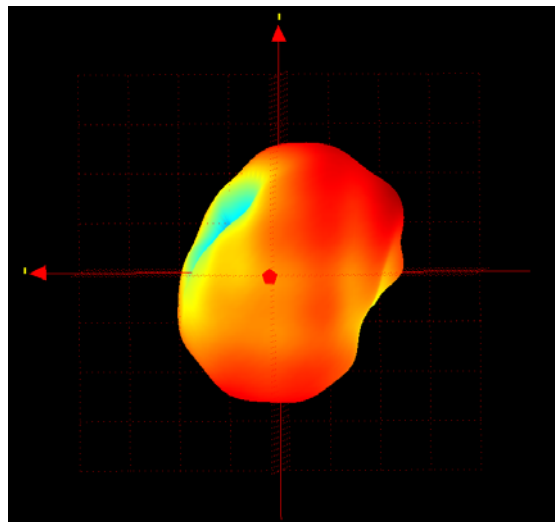
Band	Antenna(dBi)-ANT4	
	Peak	Average
5gWiFi	1.9	-4.8

4. Simple Antenna Pattern Plot

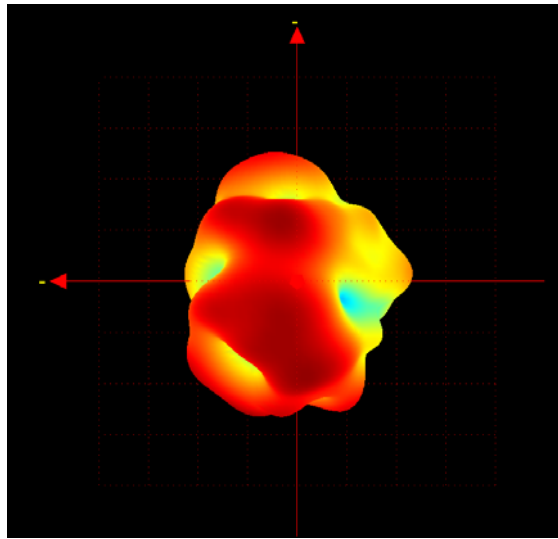
a. Main Antenna-ANT1



b. Div Antenna-ANT2



c.GPS/BT/WiFi Antenna-ANT3



d.5G WiFi Antenna-ANT4

