

# FCC SAR Test Report

Report No. : PSU-NQN2303060116SA05  
Applicant : HMD Global Oy  
Address : Bertel Jungin aukio 9, 02600 Espoo, Finland  
Manufacturer : HMD Global Oy  
Address : Bertel Jungin aukio 9, 02600 Espoo, Finland  
Product : GSM/WCDMA/LTE Mobile Phone  
FCC ID : 2AJOTTA-1545  
Brand : NOKIA  
Model No. : TA-1545  
Standards : FCC 47 CFR Part 2 (2.1093) / IEEE C95.1:1992 / IEEE 1528:2013  
KDB 865664 D01 v01r04 / KDB 865664 D02 v01r02 / KDB 248227 D01 v02r02  
KDB 447498 D04 v01 / KDB 648474 D04 v01r03 / KDB 941225 D01 v03r01  
KDB 941225 D05 v02r05 / KDB 941225 D06 v02r01  
Sample Received Date : Feb. 20, 2023  
Date of Testing : Mar. 27, 2023 ~ Mar. 29, 2023  
FCC Designation No. : CN1325 FCC Site Registration No. : 434559

**CERTIFICATION:** The above equipment have been tested by **Huarui 7layers High Technology (Suzhou) Co., Ltd.**, and found compliance with the requirement of the above standards. The test record, data evaluation & Equipment Under Test (EUT) configurations represented herein are true and accurate accounts of the measurements of the sample's SAR characteristics under the conditions specified in this report. It should not be reproduced except in full, without the written approval of our laboratory. The client should not use it to claim product certification, approval, or endorsement by A2LA or any government agencies.

Prepared By : Chao Wu  
Chao Wu / Engineer

Approved By : Peibo Sun  
Peibo Sun / Manager

This report is governed by, and incorporates by reference, CPS Conditions of Service as posted at the date of issuance of this report at <http://www.bureauveritas.com/home/about-us/our-business/cps/about-us/terms-conditions> and is intended for your exclusive use. Any copying or replication of this report to or for any other person or entity, or use of our name or trademark, is permitted only with our prior written permission. This report sets forth our findings solely with respect to the test samples identified herein. The results set forth in this report are not indicative or representative of the quality or characteristics of the lot from which a test sample was taken or any similar or identical product unless specifically and expressly noted. Our report includes all of the tests requested by you and the results thereof based upon the information that you provided to us. Measurement uncertainty is only provided upon request for accredited tests. You have 60 days from date of issuance of this report to notify us of any material error or omission caused by our negligence or if you require measurement uncertainty; provided, however, that such notice shall be in writing and shall specifically address the issue you wish to raise. A failure to raise such issue within the prescribed time shall constitute your unqualified acceptance of the completeness of this report, the tests conducted and the correctness of the report contents.

## Table of Contents

Release Control Record .....	3
<b>1. Summary of Maximum SAR Value .....</b>	<b>4</b>
<b>2. Description of Equipment Under Test .....</b>	<b>5</b>
<b>3. SAR Measurement System .....</b>	<b>7</b>
3.1 Definition of Specific Absorption Rate (SAR) .....	7
3.2 SPEAG DASY System .....	7
3.2.1 Robot.....	8
3.2.2 Probes.....	9
3.2.3 Data Acquisition Electronics (DAE) .....	9
3.2.4 Phantoms .....	10
3.2.5 Device Holder.....	11
3.2.6 System Validation Dipoles .....	11
3.2.7 Tissue Simulating Liquids.....	12
3.3 SAR System Verification .....	14
3.4 SAR Measurement Procedure .....	15
3.4.1 Area & Zoom Scan Procedure .....	15
3.4.2 Volume Scan Procedure.....	15
3.4.3 Power Drift Monitoring.....	16
3.4.4 Spatial Peak SAR Evaluation .....	16
3.4.5 SAR Averaged Methods .....	16
<b>4. SAR Measurement Evaluation.....</b>	<b>17</b>
4.1 EUT Configuration and Setting.....	17
4.2 EUT Testing Position.....	20
4.2.1 Head Exposure Conditions.....	20
4.2.2 Body-worn Accessory Exposure Conditions.....	22
4.2.3 Simultaneous Transmission Possibilities.....	23
4.2 Tissue Verification .....	23
4.3 System Verification.....	23
4.4 Maximum Output Power.....	24
4.5.1 Maximum Conducted Power .....	24
4.5.2 Measured Conducted Power Result.....	24
4.5 SAR Testing Results .....	24
4.6.1 SAR Test Reduction Considerations .....	24
4.6.2 SAR Results for Head Exposure Condition .....	25
4.6.3 SAR Results for Body-worn Exposure Condition (Separation Distance is 1.5 cm Gap) .....	25
4.6.4 SAR Measurement Variability.....	27
4.6.5 Simultaneous Multi-band Transmission Evaluation .....	28
<b>5. Calibration of Test Equipment.....</b>	<b>31</b>
<b>6. Measurement Uncertainty.....</b>	<b>32</b>
<b>7. Information on the Testing Laboratories .....</b>	<b>33</b>
<b>Appendix A. SAR Plots of System Verification</b>	
<b>Appendix B. SAR Plots of SAR Measurement</b>	
<b>Appendix C. Calibration Certificate for Probe and Dipole</b>	
<b>Appendix D. Conducted Power Result</b>	
<b>Appendix E. Photographs of EUT and Setup</b>	



BUREAU VERITAS



### Release Control Record

Report No.	Reason for Change	Date Issued
PSU-NQN2303060116SA05	Initial release	Mar. 30, 2023

## 1. Summary of Maximum SAR Value

Equipment Class	Mode	Highest Reported Head SAR <sub>1g</sub> (W/kg)	Highest Reported Body-worn SAR <sub>1g</sub> (1.5 cm Gap) (W/kg)
PCE	GSM850	0.70	0.96
	GSM1900	0.54	0.60
	WCDMA II	0.64	0.76
	WCDMA IV	0.62	0.91
	WCDMA V	0.72	0.97
	LTE 2	0.80	1.12
	LTE 5	0.71	1.06
	LTE 7	0.52	0.88
	LTE 66 / 4	1.07	1.41
DSS	Bluetooth	0.03	0.01
Highest Simultaneous Transmission SAR		Head (W/kg)	Body-worn (W/kg)
		1.10	1.42

**Note:**

- The SAR limit (**Head & Body: SAR<sub>1g</sub> 1.6 W/kg**) for general population / uncontrolled exposure is specified in FCC 47 CFR part 2 (2.1093) and ANSI/IEEE C95.1-1992.

## 2. Description of Equipment Under Test

<b>EUT Type</b>	GSM/WCDMA/LTE Mobile Phone
<b>FCC ID</b>	2AJOTTA-1545
<b>Brand Name</b>	NOKIA
<b>Model Name</b>	TA-1545
<b>IMEI Code</b>	Sample1 IMEI 1: 355600340000361 Sample2 IMEI 1: 355600340001716
<b>HW Version</b>	V0.2
<b>SW Version</b>	HMDSW_TA-1545_0.2
<b>Tx Frequency Bands (Unit: MHz)</b>	GSM850 : 824 ~ 849 GSM1900 : 1850 ~ 1910 WCDMA Band II : 1850 ~ 1910 WCDMA Band IV : 1719 ~ 1755 WCDMA Band V : 824 ~ 849 LTE Band 2 : 1850 ~ 1910 LTE Band 4 : 1710 ~ 1755 LTE Band 5 : 824 ~ 849 LTE Band 7 : 2500 ~ 2570 LTE Band 66 : 1710 ~ 1780 Bluetooth : 2402 ~ 2480
<b>Uplink Modulations</b>	GSM & GPRS : GMSK WCDMA : QPSK LTE : QPSK, 16QAM Bluetooth : GFSK, $\pi/4$ -DQPSK, 8-DPSK
<b>Maximum Tune-up Conducted Power (Unit: dBm)</b>	Please refer to section 4.5.1 of this report.
<b>Antenna Type</b>	WWAN: Fixed Internal Antenna BT: Dipole Antenna
<b>EUT Stage</b>	Identical Prototype

### Note:

- The above EUT information is declared by manufacturer and for more detailed features description please refers to the manufacturer's specifications or User's Manual.
- This device supports both LTE B4 and B66. Since the supported frequency span for LTE B4 falls completely within the LTE B66, they have the same target power, and share the same transmission path, therefore SAR was only assessed for B66.
- The difference between sample 1 and sample 2 is only the component supplier, and the other are completely consistent, so sample 1 is fully tested, and sample 2 verifies the worst case.
- Model TA-1545 (FCC ID: 2AJOTTA-1545) and TA-1563 (FCC ID: 2AJOTTA-1563) are identical on circuitry design, PCB layout, electrical components used, internal wiring, only single and double card difference. The worst case of original report was verified. (Report No: PSU-NQN2303060116SA01, FCC ID: 2AJOTTA-1563). Detailed as below.

Model	PCB Layout	Antenna	SIM
TA-1545 (FCC ID: 2AJOTTA-1545)	Same version	Same version	Single
TA-1563 (FCC ID: 2AJOTTA-1563)			Double



BUREAU  
VERITAS

## FCC SAR Test Report



Certificate #6613.01

### List of Accessory:

Battery 1	Brand Name	FHE
	Model Name	BL-L5H
	Power Rating	3.7Vdc, 1400mAh
	Type	Li-ion
	Manufacturer	Guangdong Fenghua New Energy Co.,Ltd.
Battery 2	Brand Name	/
	Model Name	BL-L5H
	Power Rating	3.7Vdc, 1400mAh
	Type	Li-ion
	Manufacturer	Shenzhen Aerospace Electronic Co., Ltd..

### **3. SAR Measurement System**

#### **3.1 Definition of Specific Absorption Rate (SAR)**

SAR is related to the rate at which energy is absorbed per unit mass in an object exposed to a radio field. The SAR distribution in a biological body is complicated and is usually carried out by experimental techniques or numerical modeling. The standard recommends limits for two tiers of groups, occupational/controlled and general population/uncontrolled, based on a person's awareness and ability to exercise control over his or her exposure. In general, occupational/controlled exposure limits are higher than the limits for general population/uncontrolled.

The SAR definition is the time derivative (rate) of the incremental energy (dW) absorbed by (dissipated in) an incremental mass (dm) contained in a volume element (dv) of a given density ( $\rho$ ). The equation description is as below:

$$\text{SAR} = \frac{d}{dt} \left( \frac{dW}{dm} \right) = \frac{d}{dt} \left( \frac{dW}{\rho dv} \right)$$

SAR is expressed in units of Watts per kilogram (W/kg)

SAR measurement can be related to the electrical field in the tissue by

$$\text{SAR} = \frac{\sigma |E|^2}{\rho}$$

Where:  $\sigma$  is the conductivity of the tissue,  $\rho$  is the mass density of the tissue and E is the RMS electrical field strength.

#### **3.2 SPEAG DASY System**

DASY system consists of high precision robot, probe alignment sensor, phantom, robot controller, controlled measurement server and near-field probe. The robot includes six axes that can move to the precision position of the DASY5 software defined. The DASY software can define the area that is detected by the probe. The robot is connected to controlled box. Controlled measurement server is connected to the controlled robot box. The DAE includes amplifier, signal multiplexing, AD converter, offset measurement and surface detection. It is connected to the Electro-optical coupler (ECO). The ECO performs the conversion from the optical into digital electric signal of the DAE and transfers data to the PC.

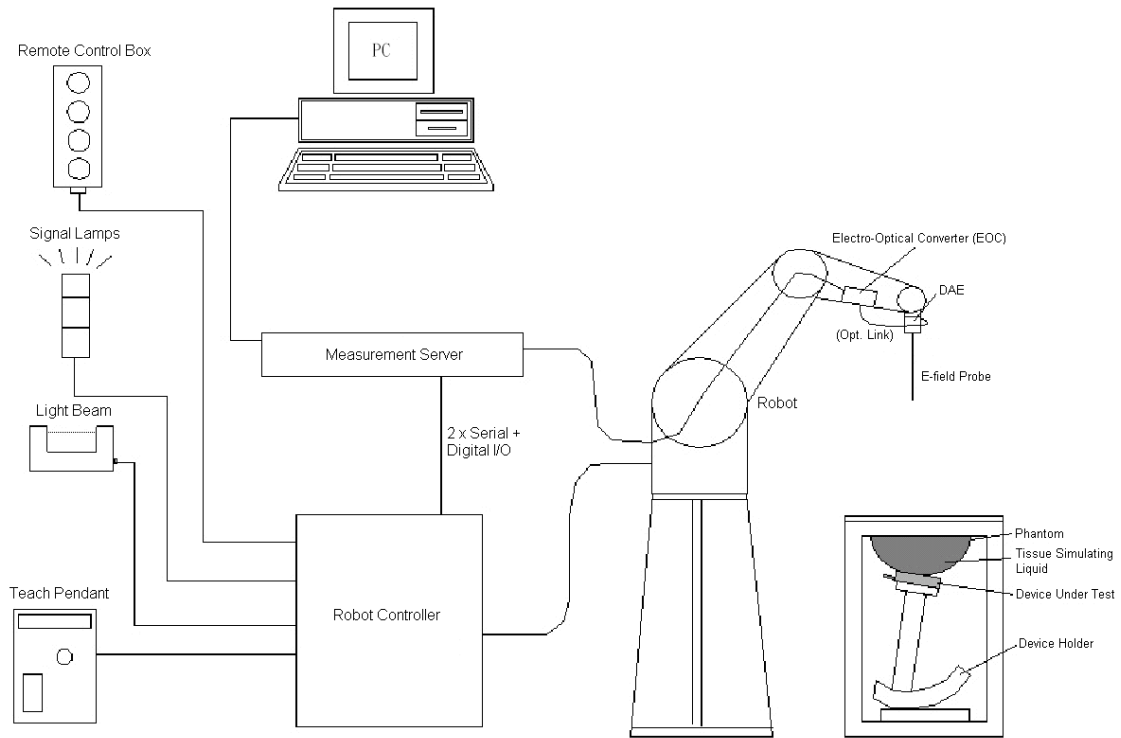


Fig-3.1 DASY System Setup

### 3.2.1 Robot

The DASY system uses the high precision robots from Stäubli SA (France). For the 6-axis controller system, the robot controller version (DASY6 : CS8c) from Stäubli is used. The Stäubli robot series have many features that are important for our application:

- High precision (repeatability  $\pm 0.035$  mm)
- High reliability (industrial design)
- Jerk-free straight movements
- Low ELF interference (the closed metallic construction shields against motor control fields)





Fig-3.2 DASY6




### 3.2.2 Probes

The SAR measurement is conducted with the dosimetric probe. The probe is specially designed and calibrated for use in liquid with high permittivity. The dosimetric probe has special calibration in liquid at different frequency.


<b>Model</b>	EX3DV4	
<b>Construction</b>	Symmetrical design with triangular core. Built-in shielding against static charges. PEEK enclosure material (resistant to organic solvents, e.g., DGBE).	
<b>Frequency</b>	10 MHz to 6 GHz Linearity: $\pm 0.2$ dB	
<b>Directivity</b>	$\pm 0.3$ dB in HSL (rotation around probe axis) $\pm 0.5$ dB in tissue material (rotation normal to probe axis)	
<b>Dynamic Range</b>	10 $\mu$ W/g to 100 mW/g Linearity: $\pm 0.2$ dB (noise: typically $< 1$ $\mu$ W/g)	
<b>Dimensions</b>	Overall length: 337 mm (Tip: 20 mm) Tip diameter: 2.5 mm (Body: 12 mm) Typical distance from probe tip to dipole centers: 1 mm	


<b>Model</b>	ES3DV3	
<b>Construction</b>	Symmetrical design with triangular core. Interleaved sensors. Built-in shielding against static charges. PEEK enclosure material (resistant to organic solvents, e.g., DGBE).	
<b>Frequency</b>	10 MHz to 4 GHz Linearity: $\pm 0.2$ dB	
<b>Directivity</b>	$\pm 0.2$ dB in HSL (rotation around probe axis) $\pm 0.3$ dB in tissue material (rotation normal to probe axis)	
<b>Dynamic Range</b>	5 $\mu$ W/g to 100 mW/g Linearity: $\pm 0.2$ dB	
<b>Dimensions</b>	Overall length: 337 mm (Tip: 20 mm) Tip diameter: 3.9 mm (Body: 12 mm) Distance from probe tip to dipole centers: 2.0 mm	

### 3.2.3 Data Acquisition Electronics (DAE)


<b>Model</b>	DAE3, DAE4	
<b>Construction</b>	Signal amplifier, multiplexer, A/D converter and control logic. Serial optical link for communication with DASY embedded system (fully remote controlled). Two step probe touch detector for mechanical surface detection and emergency robot stop.	
<b>Measurement Range</b>	-100 to +300 mV (16 bit resolution and two range settings: 4mV, 400mV)	
<b>Input Offset Voltage</b>	$< 5$ $\mu$ V (with auto zero)	
<b>Input Bias Current</b>	$< 50$ fA	
<b>Dimensions</b>	60 x 60 x 68 mm	

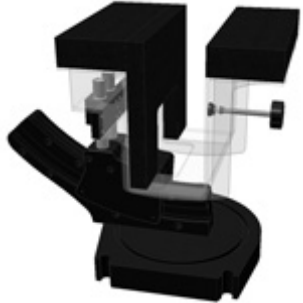
### 3.2.4 Phantoms

<b>Model</b>	Twin SAM	
<b>Construction</b>	The shell corresponds to the specifications of the Specific Anthropomorphic Mannequin (SAM) phantom defined in IEEE 1528 and IEC 62209-1. It enables the dosimetric evaluation of left and right hand phone usage as well as body mounted usage at the flat phantom region. A cover prevents evaporation of the liquid. Reference markings on the phantom allow the complete setup of all predefined phantom positions and measurement grids by teaching three points with the robot.	
<b>Material</b>	Vinylester, glass fiber reinforced (VE-GF)	
<b>Shell Thickness</b>	$2 \pm 0.2$ mm ( $6 \pm 0.2$ mm at ear point)	
<b>Dimensions</b>	Length: 1000 mm Width: 500 mm Height: adjustable feet	
<b>Filling Volume</b>	approx. 25 liters	


<b>Model</b>	ELI	
<b>Construction</b>	Phantom for compliance testing of handheld and body-mounted wireless devices in the frequency range of 30 MHz to 6 GHz. ELI is fully compatible with the IEC 62209-2 standard and all known tissue simulating liquids. ELI has been optimized regarding its performance and can be integrated into our standard phantom tables. A cover prevents evaporation of the liquid. Reference markings on the phantom allow installation of the complete setup, including all predefined phantom positions and measurement grids, by teaching three points. The phantom is compatible with all SPEAG dosimetric probes and dipoles.	
<b>Material</b>	Vinylester, glass fiber reinforced (VE-GF)	
<b>Shell Thickness</b>	$2.0 \pm 0.2$ mm (bottom plate)	
<b>Dimensions</b>	Major axis: 600 mm Minor axis: 400 mm	
<b>Filling Volume</b>	approx. 30 liters	

### 3.2.5 Device Holder

<b>Model</b>	Mounting Device	
<b>Construction</b>	In combination with the Twin SAM Phantom or ELI4, the Mounting Device enables the rotation of the mounted transmitter device in spherical coordinates. Rotation point is the ear opening point. Transmitter devices can be easily and accurately positioned according to IEC, IEEE, FCC or other specifications. The device holder can be locked for positioning at different phantom sections (left head, right head, flat).	
<b>Material</b>	POM	

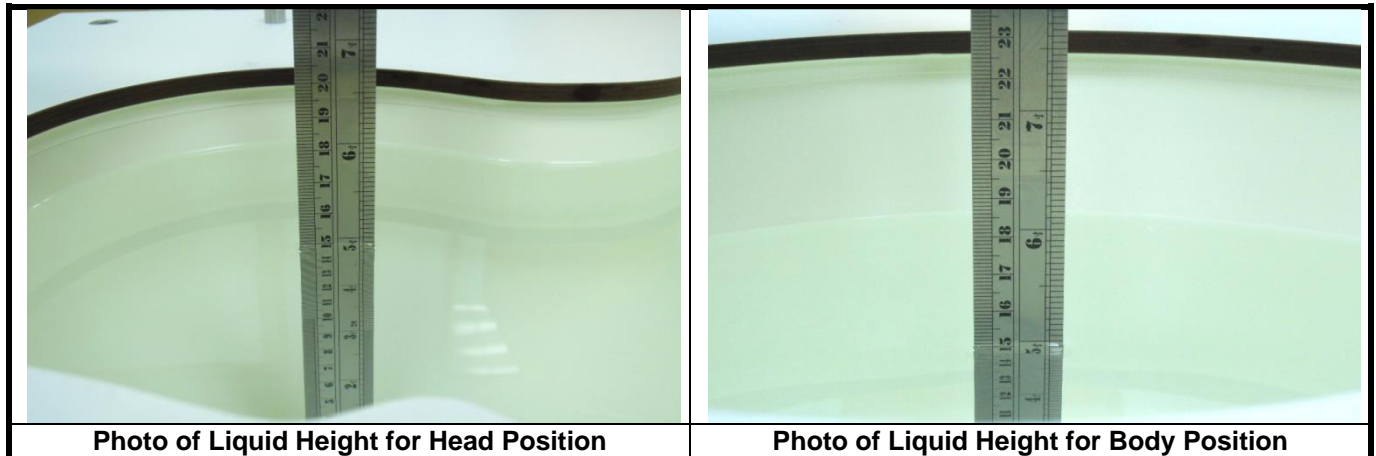
<b>Model</b>	Laptop Extensions Kit	
<b>Construction</b>	Simple but effective and easy-to-use extension for Mounting Device that facilitates the testing of larger devices according to IEC 62209-2 (e.g., laptops, cameras, etc.). It is lightweight and fits easily on the upper part of the Mounting Device in place of the phone positioner.	
<b>Material</b>	POM, Acrylic glass, Foam	

### 3.2.6 System Validation Dipoles

<b>Model</b>	D-Serial	
<b>Construction</b>	Symmetrical dipole with 1/4 balun. Enables measurement of feed point impedance with NWA. Matched for use near flat phantoms filled with tissue simulating solutions.	
<b>Frequency</b>	750 MHz to 5800 MHz	
<b>Return Loss</b>	> 20 dB	
<b>Power Capability</b>	> 100 W (f < 1GHz), > 40 W (f > 1GHz)	

### 3.2.7 Tissue Simulating Liquids

For SAR measurement of the field distribution inside the phantom, the phantom must be filled with homogeneous tissue simulating liquid to a depth of at least 15 cm. For head SAR testing, the liquid height from the ear reference point (ERP) of the phantom to the liquid top surface is larger than 15 cm. For body SAR testing, the liquid height from the center of the flat phantom to the liquid top surface is larger than 15 cm. The nominal dielectric values of the tissue simulating liquids in the phantom and the tolerance of 5% are listed in Table-3.1.



The dielectric properties of the head tissue simulating liquids are defined in IEEE 1528, and KDB 865664 D01 Appendix A. For the body tissue simulating liquids, the dielectric properties are defined in KDB 865664 D01 Appendix A. The dielectric properties of the tissue simulating liquids were verified prior to the SAR evaluation using a dielectric assessment kit and a network analyzer.

**Table-3.1 Targets of Tissue Simulating Liquid**

Frequency (MHz)	Target Permittivity	Range of $\pm 5\%$	Target Conductivity	Range of $\pm 5\%$
<b>For Head</b>				
750	41.9	39.8 ~ 44.0	0.89	0.85 ~ 0.93
835	41.5	39.4 ~ 43.6	0.90	0.86 ~ 0.95
900	41.5	39.4 ~ 43.6	0.97	0.92 ~ 1.02
1450	40.5	38.5 ~ 42.5	1.20	1.14 ~ 1.26
1640	40.3	38.3 ~ 42.3	1.29	1.23 ~ 1.35
1750	40.1	38.1 ~ 42.1	1.37	1.30 ~ 1.44
1800	40.0	38.0 ~ 42.0	1.40	1.33 ~ 1.47
1900	40.0	38.0 ~ 42.0	1.40	1.33 ~ 1.47
2000	40.0	38.0 ~ 42.0	1.40	1.33 ~ 1.47
2300	39.5	37.5 ~ 41.5	1.67	1.59 ~ 1.75
2450	39.2	37.2 ~ 41.2	1.80	1.71 ~ 1.89
2600	39.0	37.1 ~ 41.0	1.96	1.86 ~ 2.06
3500	37.9	36.0 ~ 39.8	2.91	2.76 ~ 3.06
5200	36.0	34.2 ~ 37.8	4.66	4.43 ~ 4.89
5300	35.9	34.1 ~ 37.7	4.76	4.52 ~ 5.00
5500	35.6	33.8 ~ 37.4	4.96	4.71 ~ 5.21
5600	35.5	33.7 ~ 37.3	5.07	4.82 ~ 5.32
5800	35.3	33.5 ~ 37.1	5.27	5.01 ~ 5.53

The following table gives the recipes for tissue simulating liquids.

**Table-3.2 Recipes of Tissue Simulating Liquid**

Tissue Type	Bactericide	DGBE	HEC	NaCl	Sucrose	Triton X-100	Water	Diethylene Glycol Mono-hexylether
H750	0.2	-	0.2	1.5	56.0	-	42.1	-
H835	0.2	-	0.2	1.5	57.0	-	41.1	-
H900	0.2	-	0.2	1.4	58.0	-	40.2	-
H1450	-	43.3	-	0.6	-	-	56.1	-
H1640	-	45.8	-	0.5	-	-	53.7	-
H1750	-	47.0	-	0.4	-	-	52.6	-
H1800	-	44.5	-	0.3	-	-	55.2	-
H1900	-	44.5	-	0.2	-	-	55.3	-
H2000	-	44.5	-	0.1	-	-	55.4	-
H2300	-	44.9	-	0.1	-	-	55.0	-
H2450	-	45.0	-	0.1	-	-	54.9	-
H2600	-	45.1	-	0.1	-	-	54.8	-
H3500	-	28.0	-	0.2	-	20.0	71.8	-
H5G	-	-	-	-	-	17.2	65.5	17.3

### 3.3 SAR System Verification

The system check verifies that the system operates within its specifications. It is performed daily or before every SAR measurement. The system check uses normal SAR measurements in the flat section of the phantom with a matched dipole at a specified distance. The system verification setup is shown as below.

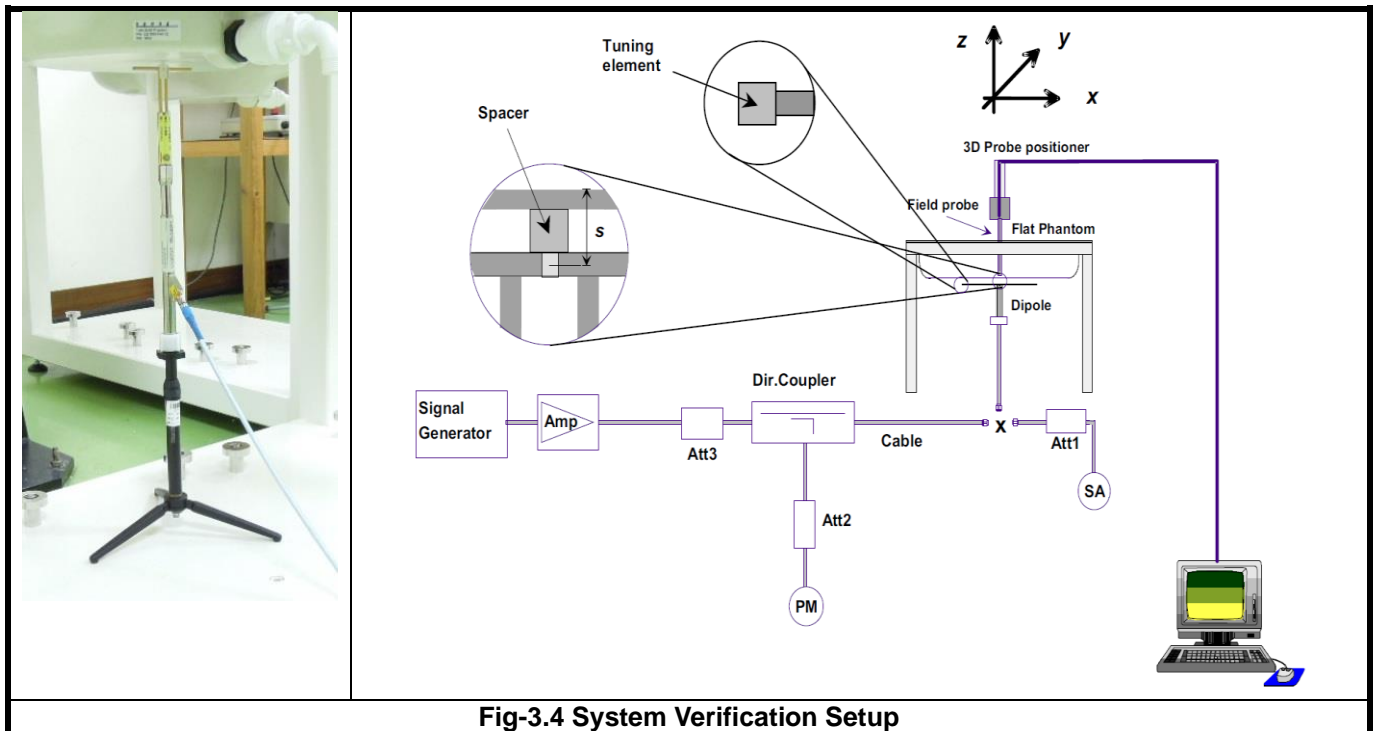


Fig-3.4 System Verification Setup

The validation dipole is placed beneath the flat phantom with the specific spacer in place. The distance spacer is touch the phantom surface with a light pressure at the reference marking and be oriented parallel to the long side of the phantom. The spectrum analyzer measures the forward power at the location of the system check dipole connector. The signal generator is adjusted for the desired forward power (250 mW is used for 700 MHz to 3 GHz, 100 mW is used for 3.5 GHz to 6 GHz) at the dipole connector and the power meter is read at that level. After connecting the cable to the dipole, the signal generator is readjusted for the same reading at power meter.

After system check testing, the SAR result will be normalized to 1W forward input power and compared with the reference SAR value derived from validation dipole certificate report. The deviation of system check should be within 10 %.

### 3.4 SAR Measurement Procedure

According to the SAR test standard, the recommended procedure for assessing the peak spatial-average SAR value consists of the following steps:

- (a) Power reference measurement
- (b) Area scan
- (c) Zoom scan
- (d) Power drift measurement

The SAR measurement procedures for each of test conditions are as follows:

- (a) Make EUT to transmit maximum output power
- (b) Measure conducted output power through RF cable
- (c) Place the EUT in the specific position of phantom
- (d) Perform SAR testing steps on the DASY system
- (e) Record the SAR value

#### 3.4.1 Area & Zoom Scan Procedure

First Area Scan is used to locate the approximate location(s) of the local peak SAR value(s). The measurement grid within an Area Scan is defined by the grid extent, grid step size and grid offset. Next, in order to determine the EM field distribution in a three-dimensional spatial extension, Zoom Scan is required. The Zoom Scan is performed around the highest E-field value to determine the averaged SAR-distribution over 10 g. According to KDB 865664 D01, the resolution for Area and Zoom scan is specified in the table below.

Items	<= 2 GHz	2-3 GHz	3-4 GHz	4-5 GHz	5-6 GHz
Area Scan ( $\Delta x, \Delta y$ )	<= 15 mm	<= 12 mm	<= 12 mm	<= 10 mm	<= 10 mm
Zoom Scan ( $\Delta x, \Delta y$ )	<= 8 mm	<= 5 mm	<= 5 mm	<= 4 mm	<= 4 mm
Zoom Scan ( $\Delta z$ )	<= 5 mm	<= 5 mm	<= 4 mm	<= 3 mm	<= 2 mm
Zoom Scan Volume	>= 30 mm	>= 30 mm	>= 28 mm	>= 25 mm	>= 22 mm

**Note:**

When zoom scan is required and report SAR is <= 1.4 W/kg, the zoom scan resolution of  $\Delta x / \Delta y$  (2-3GHz: <= 8 mm, 3-4GHz: <= 7 mm, 4-6GHz: <= 5 mm) may be applied.

#### 3.4.2 Volume Scan Procedure

The volume scan is used for assess overlapping SAR distributions for antennas transmitting in different frequency bands. It is equivalent to an oversized zoom scan used in standalone measurements. The measurement volume will be used to enclose all the simultaneous transmitting antennas. For antennas transmitting simultaneously in different frequency bands, the volume scan is measured separately in each frequency band. In order to sum correctly to compute the 1g aggregate SAR, the EUT remain in the same test position for all measurements and all volume scan use the same spatial resolution and grid spacing. When all volume scan were completed, the software, SEMCAD postprocessor can combine and subsequently superpose these measurement data to calculating the multiband SAR.

### 3.4.3 Power Drift Monitoring

All SAR testing is under the EUT install full charged battery and transmit maximum output power. In DASYS measurement software, the power reference measurement and power drift measurement procedures are used for monitoring the power drift of EUT during SAR test. Both these procedures measure the field at a specified reference position before and after the SAR testing. The software will calculate the field difference in dB. If the power drift more than 5%, the SAR will be retested.

### 3.4.4 Spatial Peak SAR Evaluation

The procedure for spatial peak SAR evaluation has been implemented according to the test standard. It can be conducted for 1g and 10g, as well as for user-specific masses. The DASYS software includes all numerical procedures necessary to evaluate the spatial peak SAR value.

The base for the evaluation is a "cube" measurement. The measured volume must include the 1g and 10g cubes with the highest averaged SAR values. For that purpose, the center of the measured volume is aligned to the interpolated peak SAR value of a previously performed area scan.

The entire evaluation of the spatial peak values is performed within the post-processing engine (SEMCADE). The system always gives the maximum values for the 1g and 10g cubes. The algorithm to find the cube with highest averaged SAR is divided into the following stages:

- (a) Extraction of the measured data (grid and values) from the Zoom Scan
- (b) Calculation of the SAR value at every measurement point based on all stored data (A/D values and measurement parameters)
- (c) Generation of a high-resolution mesh within the measured volume
- (d) Interpolation of all measured values from the measurement grid to the high-resolution grid
- (e) Extrapolation of the entire 3-D field distribution to the phantom surface over the distance from sensor to surface
- (f) Calculation of the averaged SAR within masses of 1g and 10g

### 3.4.5 SAR Averaged Methods

In DASYS, the interpolation and extrapolation are both based on the modified Quadratic Shepard's method. The interpolation scheme combines a least-square fitted function method and a weighted average method which are the two basic types of computational interpolation and approximation.

Extrapolation routines are used to obtain SAR values between the lowest measurement points and the inner phantom surface. The extrapolation distance is determined by the surface detection distance and the probe sensor offset. The uncertainty increases with the extrapolation distance. To keep the uncertainty within 1% for the 1 g and 10 g cubes, the extrapolation distance should not be larger than 5 mm.



## 4. SAR Measurement Evaluation

### 4.1 EUT Configuration and Setting

#### <Connections between EUT and System Simulator>

For WWAN SAR testing, the EUT was linked and controlled by base station emulator (CMW500 is used for GSM/WCDMA/and LTE). Communication between the EUT and the emulator was established by air link. The distance between the EUT and the communicating antenna of the emulator is larger than 50 cm and the output power radiated from the emulator antenna is at least 30 dB smaller than the output power of EUT. The EUT was set from the emulator to radiate maximum output power during SAR testing.

#### <Considerations Related to GSM / GPRS for Setup and Testing>

The maximum multi-slot capability supported by this device is as below.

1. This EUT is class B device
2. This EUT supports GPRS multi-slot class 12 (max. uplink: 4, max. downlink: 4, total timeslots: 5)

For GSM850 frequency band, the power control level is set to 5 for GSM mode and GPRS (GMSK: CS1),. For GSM1900 frequency band, the power control level is set to 0 for GSM mode and GPRS (GMSK: CS1).

SAR test reduction for GPRS modes is determined by the source-based time-averaged output power specified for production units, including tune-up tolerance. The data mode with highest specified time-averaged output power should be tested for SAR compliance in the applicable exposure conditions. For modes with the same specified maximum output power and tolerance, the higher number time-slot configuration should be tested.

#### <Considerations Related to WCDMA for Setup and Testing>

##### WCDMA Handsets Head SAR

SAR for next to the ear head exposure is measured using a 12.2 kbps RMC with TPC bits configured to all "1's". The 3G SAR test reduction procedure is applied to AMR configurations with 12.2 kbps RMC as the primary mode.

##### WCDMA Handsets Body-worn SAR

SAR for body-worn configurations is measured using a 12.2 kbps RMC with TPC bits configured to all "1's". The 3G SAR test reduction procedure is applied to other spreading codes and multiple DPDCH<sub>n</sub> configurations supported by the handset with 12.2 kbps RMC as the primary mode.

##### Handsets with Release 5 HSDPA

The 3G SAR test reduction procedure is applied to HSDPA body-worn configurations with 12.2 kbps RMC as the primary mode. Otherwise, SAR is measured for HSDPA using the HSDPA body SAR procedures in the "Release 5 HSDPA Data Devices", for the highest reported SAR body-worn exposure configuration in 12.2 kbps RMC. Handsets with both HSDPA and HSUPA are tested according to Release 6 HSPA test procedures.

##### Handsets with Release 6 HSUPA

The 3G SAR test reduction procedure is applied to HSPA (HSUPA/HSDPA with RMC) body-worn configurations with 12.2 kbps RMC as the primary mode. Otherwise, SAR is measured for HSPA using the HSPA body SAR procedures in the "Release 6 HSPA Data Devices", for the highest reported body-worn exposure SAR configuration in 12.2 kbps

RMC. When VOIP is applicable for next to the ear head exposure in HSPA, the 3G SAR test reduction procedure is applied to HSPA with 12.2 kbps RMC as the primary mode; otherwise, the same HSPA configuration used for body-worn measurements is tested for next to the ear head exposure.

**Release 5 HSDPA Data Devices**

The 3G SAR test reduction procedure is applied to body SAR with 12.2 kbps RMC as the primary mode. Otherwise, body SAR for HSDPA is measured using an FRC with H-Set 1 in Sub-test 1 and a 12.2 kbps RMC configured in Test Loop Mode 1, for the highest reported SAR configuration in 12.2 kbps RMC without HSDPA. HSDPA is configured according to the applicable UE category of a test device. The number of HS-DSCH / HS-PDSCHs, HARQ processes, minimum inter-TTI interval, transport block sizes and RV coding sequence are defined by the H-set. To maintain a consistent test configuration and stable transmission conditions, QPSK is used in the H-set for SAR testing. HS-DPCCH should be configured with a CQI feedback cycle of 4 ms and a CQI repetition factor of 2 to maintain a constant rate of active CQI slots. DPCCH and DPDCH gain factors ( $\beta_c$ ,  $\beta_d$ ), and HS-DPCCH power offset parameters ( $\Delta_{ACK}$ ,  $\Delta_{NACK}$ ,  $\Delta_{CQI}$ ) are set according to values indicated in below. The CQI value is determined by the UE category, transport block size, number of HS-PDSCHs and modulation used in the H-set.

Sub-test	$\beta_c$	$\beta_d$	$\beta_d$ (SF)	$\beta_c / \beta_d$	$\beta_{hs}^{(1)}$	CM (dB) <sup>(2)</sup>	MPR
1	2 / 15	15 / 15	64	2 / 15	4 / 15	0.0	0
2	12 / 15 <sup>(3)</sup>	15 / 15 <sup>(3)</sup>	64	12 / 15 <sup>(3)</sup>	24 / 15	1.0	0
3	15 / 15	8 / 15	64	15 / 8	30 / 15	1.5	0.5
4	15 / 15	4 / 15	64	15 / 4	30 / 15	1.5	0.5

Note 1:  $\Delta_{ACK}$ ,  $\Delta_{NACK}$  and  $\Delta_{CQI} = 8 \Leftrightarrow A_{hs} = \beta_{hs} / \beta_c = 30 / 15 \Leftrightarrow \beta_{hs} = 30 / 15 * \beta_c$ .  
 Note 2: CM = 1 for  $\beta_c / \beta_d = 12 / 15$ ,  $\beta_{hs} / \beta_c = 24 / 15$ .  
 Note 3: For subtest 2 the  $\beta_c / \beta_d$  ratio of 12 / 15 for the TFC during the measurement period (TF1, TF0) is achieved by setting the signaled gain factors for the reference TFC (TF1, TF1) to  $\beta_c = 11 / 15$  and  $\beta_d = 15 / 15$ .

**Release 6 HSUPA Data Devices**

The 3G SAR test reduction procedure is applied to body SAR with 12.2 kbps RMC as the primary mode. Otherwise, body SAR for HSPA is measured with E-DCH Sub-test 5, using H-Set 1 and QPSK for FRC and a 12.2 kbps RMC configured in Test Loop Mode 1 and power control algorithm 2, according to the highest reported body SAR configuration in 12.2 kbps RMC without HSPA. When VOIP applies to head exposure, the 3G SAR test reduction procedure is applied with 12.2 kbps RMC as the primary mode. Otherwise, the same HSPA configuration used for body SAR measurements are applied to head exposure testing. Due to inner loop power control requirements in HSPA, a communication test set is required for output power and SAR tests. The 12.2 kbps RMC, FRC H-set 1 and E-DCH configurations for HSPA are configured according to the  $\beta$  values indicated in below.

Sub-test	$\beta_c$	$\beta_d$	$\beta_d$ (SF)	$\beta_c / \beta_d$	$\beta_{hs}^{(1)}$	$\beta_{ec}$	$\beta_{ed}$	$\beta_{ed}$ (SF)	$\beta_{ed}$ (codes)	CM <sup>(2)</sup> (dB)	MPR (dB)	AG <sup>(4)</sup> Index	E-TFCI
1	11 / 15 <sup>(3)</sup>	15 / 15 <sup>(3)</sup>	64	11 / 15 <sup>(3)</sup>	22 / 15	209 / 225	1039 / 225	4	1	1.0	0.0	20	75
2	6 / 15	15 / 15	64	6 / 15	12 / 15	12 / 15	94 / 75	4	1	3.0	2.0	12	67
3	15 / 15	9 / 15	64	15 / 9	30 / 15	30 / 15	$\beta_{ed1}: 47/15$ $\beta_{ed2}: 47/15$	4	2	2.0	1.0	15	92
4	2 / 15	15 / 15	64	2 / 15	4 / 15	2 / 15	56 / 75	4	1	3.0	2.0	17	71
5	15 / 15 <sup>(4)</sup>	15 / 15 <sup>(4)</sup>	64	15 / 15 <sup>(4)</sup>	30 / 15	24 / 15	134 / 15	4	1	1.0	0.0	21	81

Note 1:  $\Delta_{ACK}, \Delta_{NACK}$  and  $\Delta_{CQI} = 8 \Leftrightarrow A_{HS} = \beta_{HS} / \beta_C = 30 / 15 \Leftrightarrow \beta_{HS} = 30 / 15 * \beta_C$ .

Note 2: CM = 1 for  $\beta_C / \beta_d = 12 / 15, \beta_{HS} / \beta_C = 24 / 15$ . For all other combinations of DPDCH, DPCCH, HS-DPCCH, E-DPDCH and E-DPCCH the MPR is based on the relative CM difference.

Note 3: For subtest 1 the  $\beta_C / \beta_d$  ratio of 11 / 15 for the TFC during the measurement period (TF1, TF0) is achieved by setting the signaled gain factors for the reference TFC (TF1, TF1) to  $\beta_C = 10 / 15$  and  $\beta_d = 15 / 15$ .

Note 4: For subtest 5 the  $\beta_C / \beta_d$  ratio of 15 / 15 for the TFC during the measurement period (TF1, TF0) is achieved by setting the signaled gain factors for the reference TFC (TF1, TF1) to  $\beta_C = 14 / 15$  and  $\beta_d = 15 / 15$ .

Note 5: Testing UE using E-DPDCH Physical Layer category 1 Sub-test 3 is not required according to TS 25.306 Table 5.1g.

Note 6:  $\beta_{ed}$  cannot be set directly; it is set by Absolute Grant Value.

**<Considerations Related to LTE for Setup and Testing>**

This device contains LTE transmitter which follows 3GPP standards, supports both QPSK and 16QAM modulations, and supported LTE band and channel bandwidth is listed in below. The output power was tested per 3GPP TS 36.521-1 maximum transmit procedures for both QPSK and 16QAM modulation. The results please refer to section 4.6 of this report.

EUT Supported LTE Band and Channel Bandwidth						
LTE Band	BW 1.4 MHz	BW 3 MHz	BW 5 MHz	BW 10 MHz	BW 15 MHz	BW 20 MHz
2	V	V	V	V	V	V
4	V	V	V	V	V	V
5	V	V	V	V		
7			V	V	V	V
66	V	V	V	V	V	V

The LTE maximum power reduction (MPR) in accordance with 3GPP TS 36.101 is active all times during LTE operation. The allowed MPR for the maximum output power is specified in below.

Modulation	Channel Bandwidth / RB Configurations						LTE MPR Setting (dB)
	BW 1.4 MHz	BW 3 MHz	BW 5 MHz	BW 10 MHz	BW 15 MHz	BW 20 MHz	
QPSK	> 5	> 4	> 8	> 12	> 16	> 18	1
16QAM	<= 5	<= 4	<= 8	<= 12	<= 16	<= 18	1
16QAM	> 5	> 4	> 8	> 12	> 16	> 18	2

**Note:** MPR is according to the standard and implemented in the circuit (mandatory).

In addition, the device is compliant with additional maximum power reduction (A-MPR) requirements defined in 3GPP TS 36.101 section 6.2.4 that was disabled for all FCC compliance testing.

During LTE SAR testing, the related parameters of operating band, channel bandwidth, uplink channel number, modulation type, and RB was set in base station simulator. When the EUT has registered and communicated to base station simulator, the simulator set to make EUT transmitting the maximum radiated power.

**<Considerations Related to Bluetooth for Setup and Testing>**

This device has installed Bluetooth engineering testing software which can provide continuous transmitting RF signal. During Bluetooth SAR testing, this device was operated to transmit continuously at the maximum transmission duty with specified transmission mode, operating frequency, lowest data rate, and maximum output power.

## 4.2 EUT Testing Position

According to KDB 648474 D04, handsets are tested for SAR compliance in head, body-worn accessory and other use configurations described in the following subsections.

### 4.2.1 Head Exposure Conditions

Head exposure is limited to next to the ear voice mode operations. Head SAR compliance is tested according to the test positions defined in IEEE Std 1528-2013 using the SAM phantom illustrated as below.

1. Define two imaginary lines on the handset
  - (a) The vertical centerline passes through two points on the front side of the handset - the midpoint of the width  $w_t$  of the handset at the level of the acoustic output, and the midpoint of the width  $w_b$  of the bottom of the handset.
  - (b) The horizontal line is perpendicular to the vertical centerline and passes through the center of the acoustic output. The horizontal line is also tangential to the face of the handset at point A.
  - (c) The two lines intersect at point A. Note that for many handsets, point A coincides with the center of the acoustic output; however, the acoustic output may be located elsewhere on the horizontal line. Also note that the vertical centerline is not necessarily parallel to the front face of the handset, especially for clamshell handsets, handsets with flip covers, and other irregularly shaped handsets.

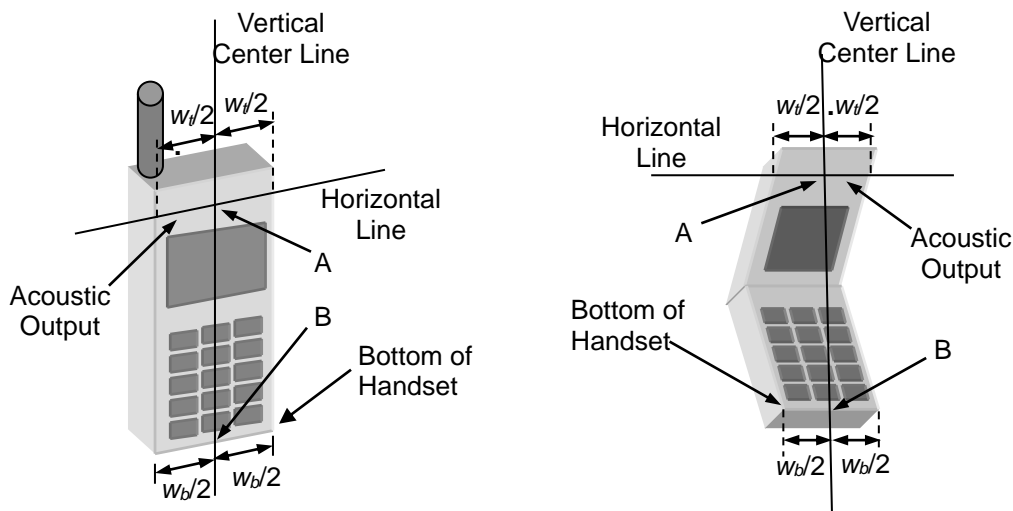


Fig-4.1 Illustration for Handset Vertical and Horizontal Reference Lines

### 2. Cheek Position

- (a) To position the device with the vertical center line of the body of the device and the horizontal line crossing the center piece in a plane parallel to the sagittal plane of the phantom. While maintaining the device in this plane, align the vertical center line with the reference plane containing the three ear and mouth reference point (M: Mouth, RE: Right Ear, and LE: Left Ear) and align the center of the ear piece with the line RE-LE.
- (b) To move the device towards the phantom with the ear piece aligned with the line LE-RE until the phone touched the ear. While maintaining the device in the reference plane and maintaining the phone contact with the ear, move the bottom of the phone until any point on the front side is in contact with the cheek of the phantom or until

contact with the ear is lost (see Fig-4.2).

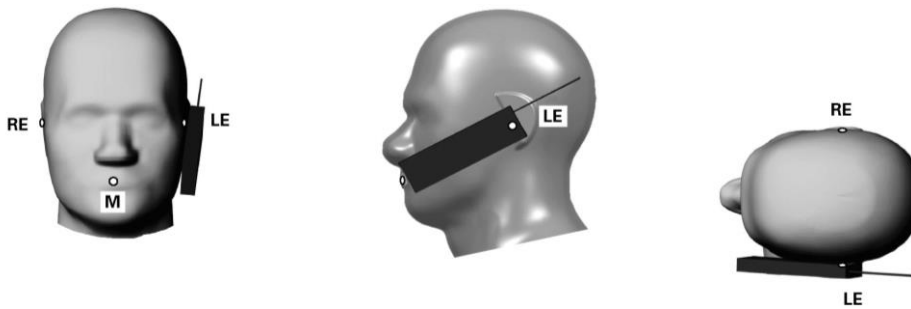


Fig-4.2 Illustration for Cheek Position

### 3. Tilted Position

(a) To position the device in the "cheek" position described above.

(b) While maintaining the device the reference plane described above and pivoting against the ear, moves it outward away from the mouth by an angle of 15 degrees or until contact with the ear is lost (see Fig-4.3).

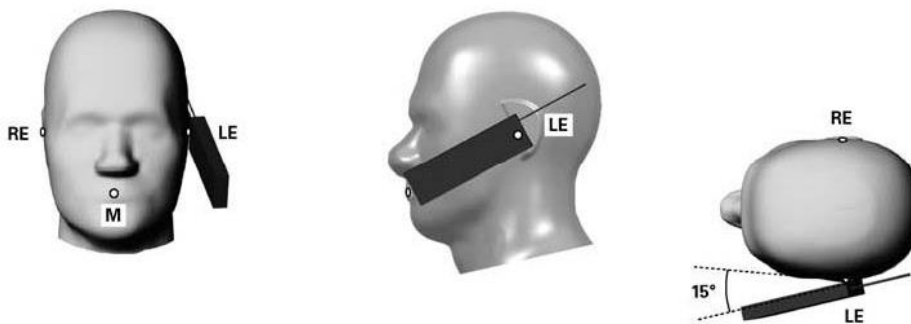


Fig-4.3 Illustration for Tilted Position

#### 4.2.2 Body-worn Accessory Exposure Conditions

Body-worn accessory exposure is typically related to voice mode operations when handsets are carried in body-worn accessories. The body-worn accessory procedures in KDB 447498 D01 are used to test for body-worn accessory SAR compliance, without a headset connected to it. This enables the test results for such configuration to be compatible with that required for hotspot mode when the body-worn accessory test separation distance is greater than or equal to that required for hotspot mode. When the reported SAR for a body-worn accessory, measured without a headset connected to the handset, is  $> 1.2 \text{ W/kg}$ , the highest reported SAR configuration for that wireless mode and frequency band should be repeated for that body-worn accessory with a headset attached to the handset.

Body-worn accessories that do not contain metallic or conductive components may be tested according to worst-case exposure configurations, typically according to the smallest test separation distance required for the group of body-worn accessories with similar operating and exposure characteristics. All body-worn accessories containing metallic components are tested in conjunction with the host device.

Body-worn accessory SAR compliance is based on a single minimum test separation distance for all wireless and operating modes applicable to each body-worn accessory used by the host, and according to the relevant voice and/or data mode transmissions and operations. If a body-worn accessory supports voice only operations in its normal and expected use conditions, testing of data mode for body-worn compliance is not required.

A conservative minimum test separation distance for supporting off-the-shelf body-worn accessories that may be acquired by users of consumer handsets is used to test for body-worn accessory SAR compliance. This distance is determined by the handset manufacturer, according to the requirements of Supplement C 01-01. Devices that are designed to operate on the body of users using lanyards and straps, or without requiring additional body-worn accessories, will be tested using a conservative minimum test separation distance  $\leq 5 \text{ mm}$  to support compliance.

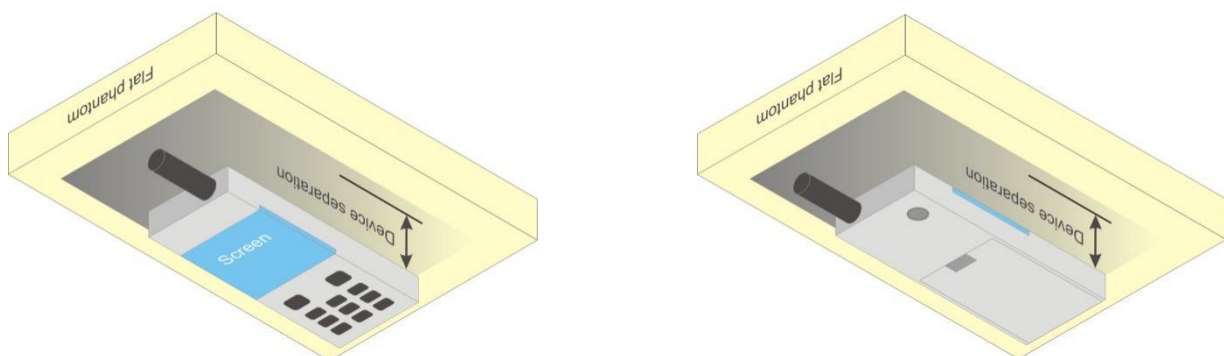


Fig-4.4 Illustration for Body Worn Position

#### 4.2.3 Simultaneous Transmission Possibilities

The simultaneous transmission possibilities for this device are listed as below.

Simultaneous TX Combination	Capable Transmit Configurations	Head	Body-worn
1	WWAN + BT		Yes

#### 4.2 Tissue Verification

The measuring results for tissue simulating liquid are shown as below.

Test Date	Tissue Type	Frequency (MHz)	Liquid Temp. (°C)	Measured Conductivity ( $\sigma$ )	Measured Permittivity ( $\epsilon_r$ )	Target Conductivity ( $\sigma$ )	Target Permittivity ( $\epsilon_r$ )	Conductivity Deviation (%)	Permittivity Deviation (%)
Mar. 28,2023	Head	835	22.5	0.931	43.012	0.90	41.50	3.44	3.64
Mar. 28,2023	Head	1750	22.5	1.421	40.796	1.37	40.10	3.72	1.74
Mar. 28,2023	Head	1900	22.5	1.403	39.733	1.40	40.00	0.21	-0.67
Mar. 28,2023	Head	2450	22.5	1.815	39.184	1.80	39.20	0.83	-0.04
Mar. 28,2023	Head	2600	22.5	1.930	38.962	1.96	39.00	-1.53	-0.10

**Note:**

The dielectric properties of the tissue simulating liquid must be measured within 24 hours before the SAR testing and within  $\pm 5\%$  of the target values. Liquid temperature during the SAR testing must be within  $\pm 2^\circ\text{C}$ .

#### 4.3 System Verification

The measuring result for system verification is tabulated as below.

Test Date	Mode	Frequency (MHz)	1W Target SAR-1g (W/kg)	Measured SAR-1g (W/kg)	Normalized to 1W SAR-1g (W/kg)	Deviation (%)	Dipole S/N	Probe S/N	DAE S/N
Mar. 28,2023	Head	835	9.60	2.44	9.76	1.67	4d265	3268	1288
Mar. 28,2023	Head	1750	36.60	8.85	35.40	-3.28	1176	3268	1288
Mar. 28,2023	Head	1900	39.70	9.88	39.52	-0.45	5d159	3268	1288
Mar. 28,2023	Head	2450	52.80	13.10	52.40	-0.76	1048	3268	1288
Mar. 28,2023	Head	2600	55.80	14.20	56.80	1.79	1110	3268	1288

**Note:**

Comparing to the reference SAR value provided by SPEAG, the validation data should be within its specification of 10 %. The result indicates the system check can meet the variation criterion and the plots can be referred to Appendix A of this report.

## **4.4 Maximum Output Power**

### **4.5.1 Maximum Conducted Power**

The maximum conducted average power (Unit: dBm) including tune-up tolerance please refer to Appendix D.

### **4.5.2 Measured Conducted Power Result**

The measuring conducted average power (Unit: dBm) please refer to Appendix D.

## **4.5 SAR Testing Results**

### **4.6.1 SAR Test Reduction Considerations**

#### **<KDB 447498 D04, General RF Exposure Guidance>**

Testing of other required channels within the operating mode of a frequency band is not required when the reported SAR for the mid-band or highest output power channel is:

- (1)  $\leq 0.8$  W/kg or 2.0 W/kg, for 1-g or 10-g respectively, when the transmission band is  $\leq 100$  MHz
- (2)  $\leq 0.6$  W/kg or 1.5 W/kg, for 1-g or 10-g respectively, when the transmission band is between 100 MHz and 200 MHz
- (3)  $\leq 0.4$  W/kg or 1.0 W/kg, for 1-g or 10-g respectively, when the transmission band is  $\geq 200$  MHz

#### **<KDB 941225 D01, 3G SAR Measurement Procedures>**

The mode tested for SAR is referred to as the primary mode. The equivalent modes considered for SAR test reduction are denoted as secondary modes. Both primary and secondary modes must be in the same frequency band. When the maximum output power and tune-up tolerance specified for production units in a secondary mode is  $\leq 1/4$  dB higher than the primary mode or when the highest reported SAR of the primary mode is scaled by the ratio of specified maximum output power and tune-up tolerance of secondary to primary mode and the adjusted SAR is  $\leq 1.2$  W/kg, SAR measurement is not required for the secondary mode.

#### **<KDB 941225 D05, SAR Evaluation Considerations for LTE Devices>**

##### **(1) QPSK with 1 RB and 50% RB allocation**

Start with the largest channel bandwidth and measure SAR, using the RB offset and required test channel combination with the highest maximum output power among RB offsets at the upper edge, middle and lower edge of each required test channel. When the reported SAR is  $\leq 0.8$  W/kg, testing of the remaining RB offset configurations and required test channels is not required; otherwise, SAR is required for the remaining required test channels and only for the RB offset configuration with the highest output power for that channel. When the reported SAR of a required test channel is  $> 1.45$  W/kg, SAR is required for all three RB offset configurations for that required test channel.

##### **(2) QPSK with 100% RB allocation**

SAR is not required when the highest maximum output power for 100% RB allocation is less than the highest maximum output power in 50% and 1 RB allocations and the highest reported SAR for 1 RB and 50% RB allocation are  $\leq 0.8$  W/kg. Otherwise, SAR is measured for the highest output power channel; and if the reported SAR is  $> 1.45$  W/kg, the remaining required test channels must also be tested.

##### **(3) Higher order modulations**

SAR is required only when the highest maximum output power for the configuration in the higher order modulation is  $> 1/2$  dB higher than the same configuration in QPSK or when the reported SAR for the QPSK configuration is  $>$



1.45 W/kg.

(4) Other channel bandwidth

SAR is required when the highest maximum output power of the smaller channel bandwidth is > 1/2 dB higher than the equivalent channel configurations in the largest channel bandwidth configuration or the reported SAR of a configuration for the largest channel bandwidth is > 1.45 W/kg.

#### 4.6.2 SAR Results for Head Exposure Condition

Plot No.	Band	Mode	Test Position	Ch.	Battery	Sample	RB#	RB Offset	Duty Cycle	Max. Tune-up Power (dBm)	Measured Conducted Power (dBm)	Power Drift (dB)	Measured SAR-1g (W/kg)	Duty Cycle Factor	Tune-up Scaling	Scaled SAR-1g (W/kg)
P01	GSM850	GPRS 2Tx slot	Right Cheek	128	1	1	-	-	-	30.00	28.89	0.13	0.545	-	1.291	<b>0.70</b>
	GSM850	GPRS 2Tx slot	Right Cheek	128	1	2	-	-	-	30.00	28.89	0.07	0.492	-	1.291	0.64
P02	GSM1900	GPRS 2Tx slot	Left Cheek	810	1	1	-	-	-	28.00	27.73	-0.05	0.512	-	1.064	<b>0.54</b>
	GSM1900	GPRS 2Tx slot	Left Cheek	810	1	2	-	-	-	28.00	27.73	-0.12	0.478	-	1.064	0.51
P03	WCDMA II	RMC12.2K	Right Cheek	9538	1	1	-	-	-	23.00	22.82	0.09	0.616	-	1.042	<b>0.64</b>
	WCDMA II	RMC12.2K	Right Cheek	9538	1	2	-	-	-	23.00	22.82	0.13	0.588	-	1.042	0.61
P04	WCDMA IV	RMC12.2K	Right Cheek	1513	1	1	-	-	-	23.00	22.64	0.06	0.569	-	1.086	<b>0.62</b>
	WCDMA IV	RMC12.2K	Right Cheek	1513	1	2	-	-	-	23.00	22.64	0.12	0.503	-	1.086	0.55
P05	WCDMA V	RMC12.2K	Right Cheek	4233	1	1	-	-	-	23.00	22.37	0.10	0.625	-	1.156	<b>0.72</b>
	WCDMA V	RMC12.2K	Right Cheek	4233	1	2	-	-	-	23.00	22.37	0.04	0.577	-	1.156	0.67
P06	LTE 2	QPSK20M	Left Cheek	19100	1	1	1	0	-	24.00	23.01	0.05	0.634	-	1.256	<b>0.80</b>
	LTE 2	QPSK20M	Left Cheek	18700	1	1	1	0	-	24.00	23.02	0.09	0.612	-	1.253	0.77
	LTE 2	QPSK20M	Left Cheek	18900	1	1	1	0	-	24.00	22.98	0.12	0.619	-	1.265	0.78
	LTE 2	QPSK20M	Left Cheek	19100	1	2	1	0	-	24.00	23.01	0.13	0.594	-	1.256	0.75
P07	LTE 5	QPSK10M	Right Cheek	20525	1	1	1	0	-	24.00	22.59	0.07	0.511	-	1.384	<b>0.71</b>
	LTE 5	QPSK10M	Right Cheek	20525	1	2	1	0	-	24.00	22.59	0.13	0.479	-	1.384	0.66
P08	LTE 7	QPSK20M	Right Cheek	21350	1	1	1	99	-	24.00	23.36	0.04	0.453	-	1.159	<b>0.52</b>
	LTE 7	QPSK20M	Right Cheek	21350	1	2	1	99	-	24.00	23.36	0.13	0.412	-	1.159	0.48
P09	LTE 66	QPSK20M	Right Cheek	132322	1	1	1	50	-	24.00	22.69	-0.02	0.792	-	1.352	<b>1.07</b>
	LTE 66	QPSK20M	Right Cheek	132072	1	1	1	50	-	24.00	22.77	-0.11	0.728	-	1.327	0.97
	LTE 66	QPSK20M	Right Cheek	132572	1	1	1	50	-	24.00	23.08	0.07	0.712	-	1.236	0.88
	LTE 66	QPSK20M	Right Cheek	132322	1	2	1	50	-	24.00	22.69	0.11	0.735	-	1.352	0.99
P10	BT	GFSK	Right Cheek	0	1	1	-	-	77.41	9.00	8.03	-0.09	0.018	1.292	1.250	<b>0.03</b>
	BT	GFSK	Right Cheek	0	1	2	-	-	77.41	9.00	8.03	0.13	0.011	1.292	1.250	0.02

#### 4.6.3 SAR Results for Body-worn Exposure Condition (Separation Distance is 1.5 cm Gap)

Plot No.	Band	Mode	Test Position	Ch.	Battery	Sample	RB#	RB Offset	Duty Cycle	Max. Tune-up Power (dBm)	Measured Conducted Power (dBm)	Power Drift (dB)	Measured SAR-1g (W/kg)	Duty Cycle Factor	Tune-up Scaling	Scaled SAR-1g (W/kg)
P11	GSM850	GPRS 2Tx slot	Rear Face	251	1	1	-	-	-	30.00	28.99	-0.11	0.760	-	1.262	<b>0.96</b>
	GSM850	GPRS 2Tx slot	Rear Face	128	1	1	-	-	-	30.00	28.89	0.14	0.698	-	1.291	0.90
	GSM850	GPRS 2Tx slot	Rear Face	189	1	1	-	-	-	30.00	28.90	0.04	0.703	-	1.288	0.91
	GSM850	GPRS 2Tx slot	Rear Face	251	1	2	-	-	-	30.00	28.99	-0.07	0.671	-	1.262	0.85
P12	GSM1900	GPRS 2Tx slot	Rear Face	810	1	1	-	-	-	28.00	27.73	0.03	0.568	-	1.064	<b>0.60</b>
	GSM1900	GPRS 2Tx slot	Rear Face	810	1	2	-	-	-	28.00	27.73	0.11	0.513	-	1.064	0.55
P13	WCDMA II	RMC12.2K	Rear Face	9538	1	1	-	-	-	23.00	22.82	-0.10	0.731	-	1.042	<b>0.76</b>
	WCDMA II	RMC12.2K	Rear Face	9538	1	2	-	-	-	23.00	22.82	0.07	0.693	-	1.042	0.72
P14	WCDMA IV	RMC12.2K	Rear Face	1312	1	1	-	-	-	23.00	22.53	-0.07	0.813	-	1.114	<b>0.91</b>
	WCDMA IV	RMC12.2K	Rear Face	1413	1	1	-	-	-	23.00	22.56	0.12	0.744	-	1.107	0.82
	WCDMA IV	RMC12.2K	Rear Face	1513	1	1	-	-	-	23.00	22.64	0.13	0.412	-	1.086	0.45
	WCDMA IV	RMC12.2K	Rear Face	1312	1	2	-	-	-	23.00	22.53	0.01	0.721	-	1.114	0.80
P15	WCDMA V	RMC12.2K	Rear Face	4233	1	1	-	-	-	23.00	22.37	-0.01	0.841	-	1.156	<b>0.97</b>
	WCDMA V	RMC12.2K	Rear Face	4132	1	1	-	-	-	23.00	22.18	0.13	0.621	-	1.208	0.75
	WCDMA V	RMC12.2K	Rear Face	4182	1	1	-	-	-	23.00	22.15	0.07	0.688	-	1.216	0.84
	WCDMA V	RMC12.2K	Rear Face	4233	1	2	-	-	-	23.00	22.37	0.15	0.782	-	1.156	0.90
P16	LTE 2	QPSK20M	Rear Face	18700	1	1	1	0	-	24.00	23.02	-0.17	0.893	-	1.253	<b>1.12</b>



**BUREAU  
VERITAS**

# FCC SAR Test Report



Certificate #6613.01

Plot No.	Band	Mode	Test Position	Ch.	Battery	Sample	RB#	RB Offset	Duty Cycle	Max. Tune-up Power (dBm)	Measured Conducted Power (dBm)	Power Drift (dB)	Measured SAR-1g (W/kg)	Duty Cycle Factor	Tune-up Scaling Facto	Scaled SAR-1g (W/kg)
	LTE 2	QPSK20M	Rear Face	18900	1	1	1	0	-	24.00	22.98	0.05	0.813	-	1.265	1.03
	LTE 2	QPSK20M	Rear Face	19100	1	1	1	0	-	24.00	23.01	0.12	0.828	-	1.256	1.04
	LTE 2	QPSK20M	Rear Face	18700	1	2	1	0	-	24.00	23.02	0.03	0.822	-	1.253	1.03
P17	LTE 5	QPSK10M	Rear Face	20450	1	1	1	0	-	24.00	22.44	0.00	0.739	-	1.432	<b>1.06</b>
	LTE 5	QPSK10M	Rear Face	20525	1	1	1	0	-	24.00	22.59	0.03	0.712	-	1.384	0.99
	LTE 5	QPSK10M	Rear Face	20600	1	1	1	0	-	24.00	22.51	0.11	0.707	-	1.409	1.00
	LTE 5	QPSK10M	Rear Face	20450	1	2	1	0	-	24.00	22.44	0.03	0.689	-	1.432	0.99
P18	LTE 7	QPSK20M	Rear Face	20850	1	1	1	99	-	24.00	22.58	-0.08	0.633	-	1.387	<b>0.88</b>
	LTE 7	QPSK20M	Rear Face	21350	1	1	1	99	-	24.00	23.36	0.12	0.612	-	1.159	0.71
	LTE 7	QPSK20M	Rear Face	21100	1	1	1	99	-	24.00	22.97	-0.09	0.619	-	1.268	0.78
	LTE 7	QPSK20M	Rear Face	20850	1	2	1	99	-	24.00	22.58	0.12	0.578	-	1.387	0.80
P19	LTE 66	QPSK20M	Rear Face	132572	1	1	1	50	-	24.00	23.08	0.05	1.140	-	1.236	<b>1.41</b>
	LTE 66	QPSK20M	Rear Face	132072	1	1	1	50	-	24.00	22.77	0.12	1.030	-	1.327	1.37
	LTE 66	QPSK20M	Rear Face	132322	1	1	1	50	-	24.00	22.69	-0.16	1.010	-	1.352	1.37
	LTE 66	QPSK20M	Rear Face	132572	1	2	1	50	-	24.00	23.08	0.10	1.070	-	1.236	1.32
P20	BT	GFSK	Rear Face	0	1	1	-	-	77.41	9.00	8.03	0.06	0.004	1.292	1.250	<b>0.01</b>
	BT	GFSK	Rear Face	0	1	2	-	-	77.41	9.00	8.03	0.02	0.003	1.292	1.250	0.005

#### 4.6.4 SAR Measurement Variability

According to KDB 865664 D01, SAR measurement variability was assessed for each frequency band, which is determined by the SAR probe calibration point and tissue-equivalent medium used for the device measurements. When both head and body tissue-equivalent media are required for SAR measurements in a frequency band, the variability measurement procedures should be applied to the tissue medium with the highest measured SAR, using the highest measured SAR configuration for that tissue-equivalent medium. Alternatively, if the highest measured SAR for both head and body tissue-equivalent media are  $\leq 1.45$  W/kg and the ratio of these highest SAR values, i.e., largest divided by smallest value, is  $\leq 1.10$ , the highest SAR configuration for either head or body tissue-equivalent medium may be used to perform the repeated measurement. These additional measurements are repeated after the completion of all measurements requiring the same head or body tissue-equivalent medium in a frequency band. The test device should be returned to ambient conditions (normal room temperature) with the battery fully charged before it is re-mounted on the device holder for the repeated measurement(s) to minimize any unexpected variations in the repeated results.

SAR repeated measurement procedure:

1. When the highest measured SAR is  $< 0.80$  W/kg, repeated measurement is not required.
2. When the highest measured SAR is  $\geq 0.80$  W/kg, repeat that measurement once.
3. If the ratio of largest to smallest SAR for the original and first repeated measurements is  $> 1.20$ , or when the original or repeated measurement is  $\geq 1.45$  W/kg, perform a second repeated measurement.
4. If the ratio of largest to smallest SAR for the original, first and second repeated measurements is  $> 1.20$ , and the original, first or second repeated measurement is  $\geq 1.5$  W/kg, perform a third repeated measurement.

Band	Test Position	Ch.	Original Measured SAR-1g (W/kg)	1st Repeated SAR-1g (W/kg)	L/S Ratio	2nd Repeated SAR-1g (W/kg)	L/S Ratio	3rd Repeated SAR-1g (W/kg)	L/S Ratio
LTE 2	Left Cheek	19100	0.634	0.628	1.01	N/A	N/A	N/A	N/A
LTE 66	Right Cheek	132322	0.792	0.784	1.01	N/A	N/A	N/A	N/A

Band	Test Position	Ch.	Original Measured SAR-1g (W/kg)	1st Repeated SAR-1g (W/kg)	L/S Ratio	2nd Repeated SAR-1g (W/kg)	L/S Ratio	3rd Repeated SAR-1g (W/kg)	L/S Ratio
LTE 2	Rear Face	18700	0.893	0.835	1.07	N/A	N/A	N/A	N/A
LTE 5	Rear Face	20450	0.739	0.716	1.03	N/A	N/A	N/A	N/A
LTE 7	Rear Face	20850	0.633	0.612	1.03	N/A	N/A	N/A	N/A
LTE 66	Rear Face	132572	1.140	1.070	1.07	N/A	N/A	N/A	N/A

**4.6.5 Simultaneous Multi-band Transmission Evaluation**

**<SAR Summation Analysis>**

Simultaneous transmission SAR test exclusion is determined for each operating configuration and exposure condition according to the reported standalone SAR of each applicable simultaneous transmitting antenna. When the sum of SAR<sub>1g</sub> of all simultaneously transmitting antennas in an operating mode and exposure condition combination is within the SAR limit (SAR<sub>1g</sub> 1.6 W/kg), the simultaneous transmission SAR is not required. When the sum of SAR<sub>1g</sub> is greater than the SAR limit (SAR<sub>1g</sub> 1.6 W/kg), SAR test exclusion is determined by the SPLSR.

**<Head Exposure condition>**

WWAN Band	Exposure Position	1	2	1+2 Summed 1g SAR (W/kg)	SPLSR Analysis
		WWAN 1g SAR (W/kg)	BT 1g SAR (W/kg)		
GSM 850	Right Cheek	0.704	0.029	<b>0.73</b>	Σ SAR < 1.6, Not required
	Right Tilted	0.461	0.000	<b>0.46</b>	Σ SAR < 1.6, Not required
	Left Cheek	0.780	0.036	<b>0.82</b>	Σ SAR < 1.6, Not required
	Left Tilted	0.462	0.000	<b>0.46</b>	Σ SAR < 1.6, Not required
GSM 1900	Right Cheek	0.553	0.029	<b>0.58</b>	Σ SAR < 1.6, Not required
	Right Tilted	0.291	0.000	<b>0.29</b>	Σ SAR < 1.6, Not required
	Left Cheek	0.545	0.036	<b>0.58</b>	Σ SAR < 1.6, Not required
	Left Tilted	0.270	0.000	<b>0.27</b>	Σ SAR < 1.6, Not required
WCDMA II	Right Cheek	0.642	0.029	<b>0.67</b>	Σ SAR < 1.6, Not required
	Right Tilted	0.345	0.000	<b>0.35</b>	Σ SAR < 1.6, Not required
	Left Cheek	0.745	0.036	<b>0.78</b>	Σ SAR < 1.6, Not required
	Left Tilted	0.311	0.000	<b>0.31</b>	Σ SAR < 1.6, Not required
WCDMA IV	Right Cheek	0.618	0.029	<b>0.65</b>	Σ SAR < 1.6, Not required
	Right Tilted	0.275	0.000	<b>0.27</b>	Σ SAR < 1.6, Not required
	Left Cheek	0.626	0.036	<b>0.66</b>	Σ SAR < 1.6, Not required
	Left Tilted	0.261	0.000	<b>0.26</b>	Σ SAR < 1.6, Not required
WCDMA V	Right Cheek	0.723	0.029	<b>0.75</b>	Σ SAR < 1.6, Not required
	Right Tilted	0.415	0.000	<b>0.42</b>	Σ SAR < 1.6, Not required
	Left Cheek	0.713	0.036	<b>0.75</b>	Σ SAR < 1.6, Not required
	Left Tilted	0.484	0.000	<b>0.48</b>	Σ SAR < 1.6, Not required
LTE 2	Right Cheek	0.764	0.029	<b>0.79</b>	Σ SAR < 1.6, Not required
	Right Tilted	0.392	0.000	<b>0.39</b>	Σ SAR < 1.6, Not required
	Left Cheek	0.796	0.036	<b>0.83</b>	Σ SAR < 1.6, Not required



BUREAU  
VERITAS

# FCC SAR Test Report



Certificate #6613.01

WWAN Band	Exposure Position	1	2	1+2 Summed 1g SAR (W/kg)	SPLSR Analysis
		WWAN	BT		
		1g SAR (W/kg)	1g SAR (W/kg)		
	Left Tilted	0.368	0.000	<b>0.37</b>	$\Sigma$ SAR < 1.6, Not required
LTE 5	Right Cheek	0.707	0.029	<b>0.74</b>	$\Sigma$ SAR < 1.6, Not required
	Right Tilted	0.371	0.000	<b>0.37</b>	$\Sigma$ SAR < 1.6, Not required
	Left Cheek	0.683	0.036	<b>0.72</b>	$\Sigma$ SAR < 1.6, Not required
	Left Tilted	0.473	0.000	<b>0.47</b>	$\Sigma$ SAR < 1.6, Not required
LTE 7	Right Cheek	0.525	0.029	<b>0.55</b>	$\Sigma$ SAR < 1.6, Not required
	Right Tilted	0.190	0.000	<b>0.19</b>	$\Sigma$ SAR < 1.6, Not required
	Left Cheek	0.567	0.036	<b>0.60</b>	$\Sigma$ SAR < 1.6, Not required
	Left Tilted	0.163	0.000	<b>0.16</b>	$\Sigma$ SAR < 1.6, Not required
LTE 66	Right Cheek	1.071	0.029	<b>1.10</b>	$\Sigma$ SAR < 1.6, Not required
	Right Tilted	0.311	0.000	<b>0.31</b>	$\Sigma$ SAR < 1.6, Not required
	Left Cheek	0.982	0.036	<b>1.02</b>	$\Sigma$ SAR < 1.6, Not required
	Left Tilted	0.297	0.000	<b>0.30</b>	$\Sigma$ SAR < 1.6, Not required

<Body Worn Exposure condition>

WWAN Band	Exposure Position	1	2	1+2 Summed 1g SAR (W/kg)	SPLSR Analysis
		WWAN	BT		
		1g SAR (W/kg)	1g SAR (W/kg)		
GSM 850	Front at 1.5cm	0.681	0.006	<b>0.69</b>	$\Sigma$ SAR < 1.6, Not required
	Back at 1.5cm	0.959	0.006	<b>0.97</b>	$\Sigma$ SAR < 1.6, Not required
GSM 1900	Front at 1.5cm	0.346	0.006	<b>0.35</b>	$\Sigma$ SAR < 1.6, Not required
	Back at 1.5cm	0.604	0.006	<b>0.61</b>	$\Sigma$ SAR < 1.6, Not required
WCDMA II	Front at 1.5cm	0.499	0.006	<b>0.51</b>	$\Sigma$ SAR < 1.6, Not required
	Back at 1.5cm	0.762	0.006	<b>0.77</b>	$\Sigma$ SAR < 1.6, Not required
WCDMA IV	Front at 1.5cm	0.536	0.006	<b>0.54</b>	$\Sigma$ SAR < 1.6, Not required
	Back at 1.5cm	0.906	0.006	<b>0.91</b>	$\Sigma$ SAR < 1.6, Not required
WCDMA V	Front at 1.5cm	0.814	0.006	<b>0.82</b>	$\Sigma$ SAR < 1.6, Not required
	Back at 1.5cm	0.972	0.006	<b>0.98</b>	$\Sigma$ SAR < 1.6, Not required
LTE 2	Front at 1.5cm	0.646	0.006	<b>0.65</b>	$\Sigma$ SAR < 1.6, Not required
	Back at 1.5cm	1.119	0.006	<b>1.13</b>	$\Sigma$ SAR < 1.6, Not required
LTE 5	Front at 1.5cm	0.749	0.006	<b>0.75</b>	$\Sigma$ SAR < 1.6, Not required
	Back at 1.5cm	1.058	0.006	<b>1.06</b>	$\Sigma$ SAR < 1.6, Not required
LTE 7	Front at 1.5cm	0.216	0.006	<b>0.22</b>	$\Sigma$ SAR < 1.6, Not required
	Back at 1.5cm	0.878	0.006	<b>0.88</b>	$\Sigma$ SAR < 1.6, Not required
LTE 66	Front at 1.5cm	0.562	0.006	<b>0.57</b>	$\Sigma$ SAR < 1.6, Not required
	Back at 1.5cm	1.409	0.006	<b>1.42</b>	$\Sigma$ SAR < 1.6, Not required

Test Engineer : Shunxin Hou and Zixiao Xia.

## 5. Calibration of Test Equipment

Equipment	Manufacturer	Model	SN	Cal. Date	Cal. Interval
System Validation Dipole	SPEAG	D750V3	1200	Oct. 27, 2021	3 Years
System Validation Dipole	SPEAG	D835V2	4d265	Oct. 18, 2021	3 Years
System Validation Dipole	SPEAG	D1750V2	1176	Oct. 19, 2021	3 Years
System Validation Dipole	SPEAG	D1900V2	5d159	Sep. 16, 2021	3 Years
System Validation Dipole	SPEAG	D2450V2	1048	Oct. 21, 2021	3 Years
System Validation Dipole	SPEAG	D2600V2	1110	Sep. 16, 2021	3 Years
Data Acquisition Electronics	SPEAG	DAE4	1288	Apr. 29, 2022	1 Year
Dosimetric E-field Probe	SPEAG	ES3DV3	3268	Sep. 08, 2022	1 Year
Wideband Radio Communication Tester	Rohde&Schwarz	CMW 500	169210	Jun. 27, 2022	1 Year
Power Amplifier	Mimi-Circuits	ZHL-42w	ZHL-42w	N/A	N/A
Power Amplifier	Mimi-Circuits	ZVE-8G+	ZVE-8G+	N/A	N/A
Power Meter	Rohde&Schwarz	NRX	NRX	Feb. 14, 2022	2 Year
Power Sensor	Rohde&Schwarz	NRP6A	NRP6A	Feb. 14, 2022	2 Year
Power Sensor	Rohde&Schwarz	NRP6A	NRP6A	Feb. 14, 2022	2 Year
ESG Analog Signal Generator	Rohde&Schwarz	SMB100A03	SMB100A03	Feb. 15, 2022	2 Year
Coupler	Woken	0110A056020-10	COM27RW1A3	May. 11, 2022	1 Year
Temp.&Humi.Recorder	ANYMETER	JR912	SZ01	May. 29, 2021	1 Year

### Note:

- Referring to KDB 865664 D01 v01r04, the dipole calibration interval can be extended to 3 years with justification. The dipole are also not physically damaged, or repaired during the interval. The dipole justification can be found in appendix C.  
The return loss is  $< -20\text{dB}$ , within 20% of prior calibration, the impedance is with 5ohm of prior calibration.

## 6. Measurement Uncertainty

DASY6 Uncertainty Budget								
Error Description	Uncertainty Value (±%)	Probability	Divisor	(Ci) 1g	(Ci) 10g	Standard Uncertainty (1g) (±%)	Standard Uncertainty (10g) (±%)	(Vi) Veff
<b>Measurement System</b>								
Probe Calibration	6.05	N	1	1	1	6.1	6.1	∞
Axial Isotropy	4.7	R	1.732	0.7	0.7	1.9	1.9	∞
Hemispherical Isotropy	9.6	R	1.732	0.7	0.7	3.9	3.9	∞
Boundary Effects	2.0	R	1.732	1	1	1.2	1.2	∞
Linearity	4.7	R	1.732	1	1	2.7	2.7	∞
System Detection Limits	1.0	R	1.732	1	1	0.6	0.6	∞
Modulation Response	3.2	R	1.732	1	1	1.8	1.8	∞
Readout Electronics	0.3	N	1	1	1	0.3	0.3	∞
Response Time	0.0	R	1.732	1	1	0.0	0.0	∞
Integration Time	2.6	R	1.732	1	1	1.5	1.5	∞
RF Ambient Noise	3.0	R	1.732	1	1	1.7	1.7	∞
RF Ambient Reflections	3.0	R	1.732	1	1	1.7	1.7	∞
Probe Positioner	0.4	R	1.732	1	1	0.2	0.2	∞
Probe Positioning	6.7	R	1.732	1	1	3.9	3.9	∞
Max. SAR Eval.	4.0	R	1.732	1	1	2.3	2.3	∞
<b>Test Sample Related</b>								
Device Positioning	4.0	N	1	1	1	4.0	4.0	35
Device Holder	4.9	N	1	1	1	4.9	4.9	12
Power Drift	5.0	R	1.732	1	1	2.9	2.9	∞
Power Scaling	0.0	R	1.732	1	1	0.0	0.0	∞
<b>Phantom and Setup</b>								
Phantom Uncertainty	6.6	R	1.732	1	1	3.8	3.8	∞
SAR correction	0.0	R	1.732	1	0.84	0.0	0.0	∞
Liquid Conductivity Repeatability	0.14	N	1	0.78	0.71	0.1	0.1	5
Liquid Conductivity (target)	10.0	R	1.732	0.78	0.71	4.5	4.1	∞
Liquid Conductivity (mea.)	2.5	R	1.732	0.78	0.71	1.1	1.0	∞
Temp. unc. - Conductivity	2.61	R	1.732	0.78	0.71	1.2	1.1	∞
Liquid Permittivity Repeatability	0.03	N	1	0.23	0.26	0.0	0.0	5
Liquid Permittivity (target)	10.0	R	1.732	0.23	0.26	1.3	1.5	∞
Liquid Permittivity (mea.)	2.5	R	1.732	0.23	0.26	0.3	0.4	∞
Temp. unc. - Permittivity	1.78	R	1.732	0.23	0.26	0.2	0.3	∞
<b>Combined Std. Uncertainty</b>						13.6%	13.5%	578
<b>Coverage Factor for 95 %</b>						K=2	K=2	
<b>Expanded STD Uncertainty</b>						27.2%	26.9%	

Uncertainty budget for frequency range 300 MHz to 3 GHz



## 7. Information on the Testing Laboratories

We, Huarui Saiwei (Suzhou) Technology Co., LTD., were founded in 2020 to provide our best service in EMC, Radio, Telecom and Safety consultation.

If you have any comments, please feel free to contact us at the following:

Add: Tower N, Innovation Center, 88 Zuyi Road, High-tech District, Suzhou City, Anhui Province

Tel: [+86 \(0557\) 368 1008](tel:+86(0557)3681008)

The road map of all our labs can be found in our web site also

Web: <http://www.7Layers.com>

---END---

## Appendix A. SAR Plots of System Verification

The plots for system verification with largest deviation for each SAR system combination are shown as follows.

## System Check\_HSL835\_230328

### DUT: Dipole 835 MHz D835V2

Communication System: CW; Frequency: 835 MHz; Duty Cycle: 1:1

Medium: HSL835\_0328 Medium parameters used:  $f = 835$  MHz;  $\sigma = 0.931$  S/m;  $\epsilon_r = 43.012$ ;  $\rho = 1000$  kg/m<sup>3</sup>

Ambient Temperature : 23.5°C; Liquid Temperature : 22.5°C

DASY5 Configuration:

- Probe: ES3DV3 - SN3268; ConvF(6.35, 6.35, 6.35) @ 835 MHz; Calibrated: 2022/09/08
- Sensor-Surface: 4mm (Mechanical Surface Detection)
- Electronics: DAE4 Sn1288; Calibrated: 2022/08/29
- Phantom: Right v5.0; Type: QD000P40CD; Serial: TP:1502
- Measurement SW: DASY52, Version 52.10 (2); SEMCAD X Version 14.6.12 (7450)

**Pin=250mW/Area Scan (81x81x1):** Interpolated grid: dx=1.500 mm, dy=1.500 mm

Maximum value of SAR (interpolated) = 2.64 W/kg

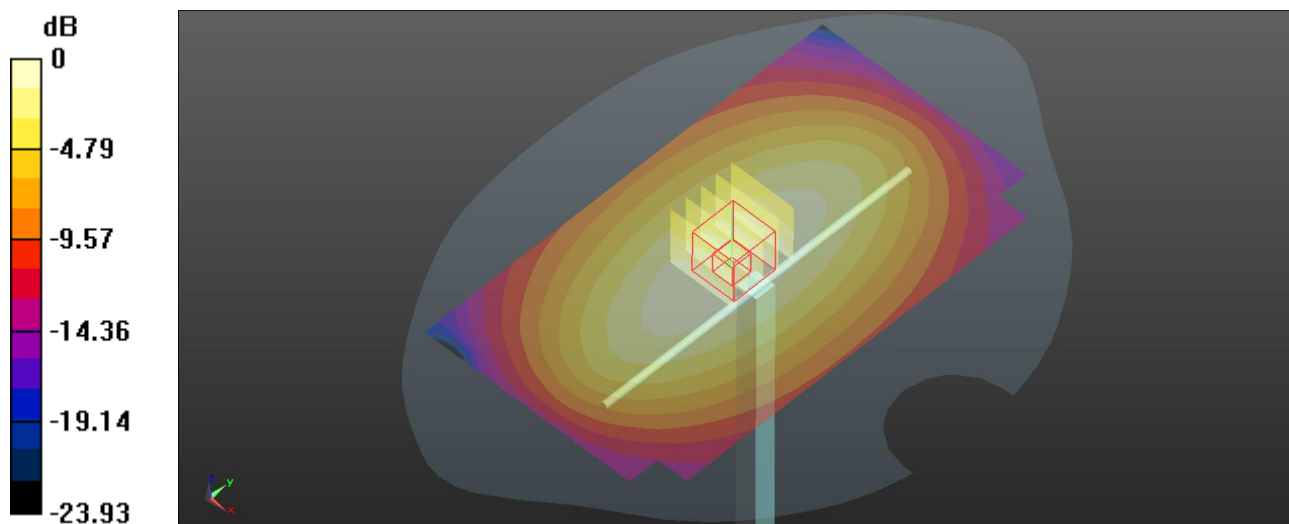
**Pin=250mW/Zoom Scan (5x5x7)/Cube 0:** Measurement grid: dx=8mm, dy=8mm, dz=5mm

Reference Value = 54.84 V/m; Power Drift = -0.15 dB

Peak SAR (extrapolated) = 3.62 W/kg

**SAR(1 g) = 2.44 W/kg; SAR(10 g) = 1.59 W/kg**

Maximum value of SAR (measured) = 2.64 W/kg



0 dB = 2.64 W/kg

## System Check\_HSL1750\_230328

### DUT: Dipole 1750 MHz D1750V2

Communication System: CW; Frequency: 1750 MHz; Duty Cycle: 1:1

Medium: HSL1750\_0328 Medium parameters used:  $f = 1750$  MHz;  $\sigma = 1.421$  S/m;  $\epsilon_r = 40.796$ ;  $\rho = 1000$  kg/m<sup>3</sup>

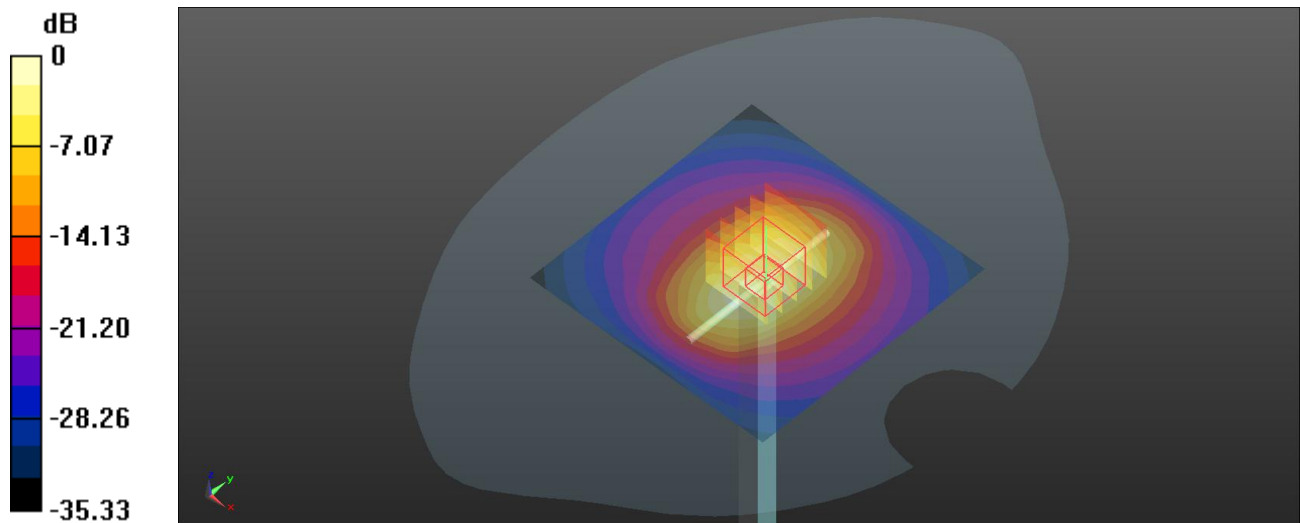
Ambient Temperature : 23.5°C; Liquid Temperature : 22.5°C

DASY5 Configuration:

- Probe: ES3DV3 - SN3268; ConvF(5.38, 5.38, 5.38) @ 1750 MHz; Calibrated: 2022/09/08
- Sensor-Surface: 4mm (Mechanical Surface Detection)
- Electronics: DAE4 Sn1288; Calibrated: 2022/08/29
- Phantom: Right v5.0; Type: QD000P40CD; Serial: TP:1502
- Measurement SW: DASY52, Version 52.10 (2); SEMCAD X Version 14.6.12 (7450)

**Pin=250mW/Area Scan (81x81x1):** Interpolated grid: dx=1.500 mm, dy=1.500 mm  
Maximum value of SAR (interpolated) = 9.37 W/kg

**Pin=250mW/Zoom Scan (5x5x7)/Cube 0:** Measurement grid: dx=8mm, dy=8mm, dz=5mm  
Reference Value = 81.72 V/m; Power Drift = -0.13 dB  
Peak SAR (extrapolated) = 14.9 W/kg  
**SAR(1 g) = 8.85 W/kg; SAR(10 g) = 4.66 W/kg**  
Maximum value of SAR (measured) = 9.33 W/kg



0 dB = 9.33 W/kg

## System Check\_HSL1900\_230328

### DUT: Dipole 1900 MHz D1900V2

Communication System: CW; Frequency: 1900 MHz; Duty Cycle: 1:1

Medium: HSL1900\_0328 Medium parameters used:  $f = 1900$  MHz;  $\sigma = 1.403$  S/m;  $\epsilon_r = 39.733$ ;  $\rho = 1000$  kg/m<sup>3</sup>

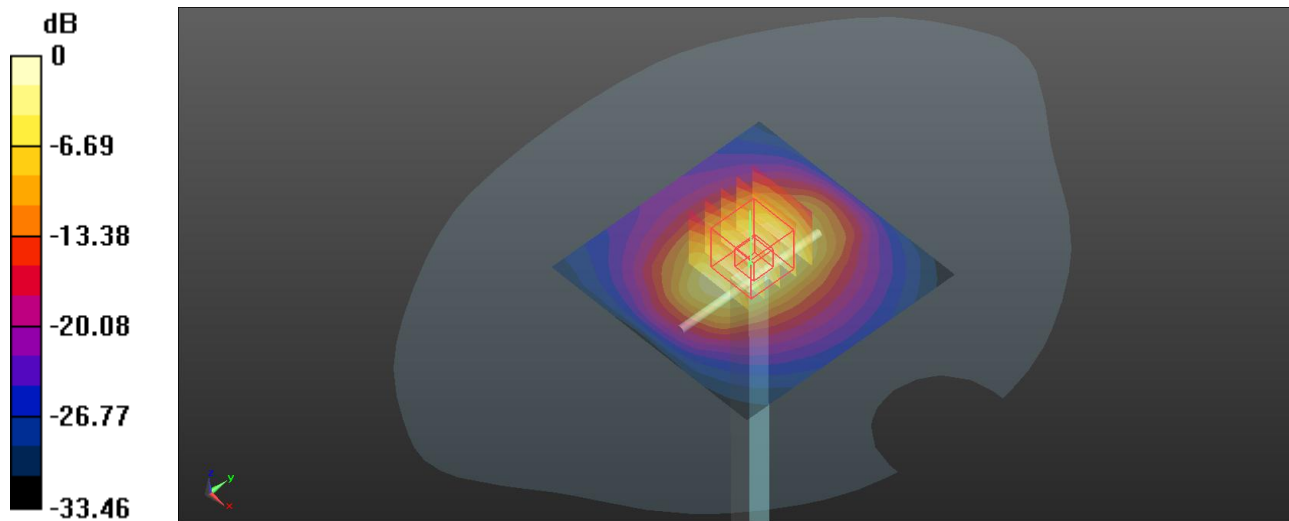
Ambient Temperature : 23.5°C; Liquid Temperature : 22.5°C

DASY5 Configuration:

- Probe: ES3DV3 - SN3268; ConvF(5.1, 5.1, 5.1) @ 1900 MHz; Calibrated: 2022/09/08
- Sensor-Surface: 4mm (Mechanical Surface Detection)
- Electronics: DAE4 Sn1288; Calibrated: 2022/08/29
- Phantom: Right v5.0; Type: QD000P40CD; Serial: TP:1502
- Measurement SW: DASY52, Version 52.10 (2); SEMCAD X Version 14.6.12 (7450)

**Pin=250mW/Area Scan (71x71x1):** Interpolated grid: dx=1.500 mm, dy=1.500 mm  
Maximum value of SAR (interpolated) = 10.7 W/kg

**Pin=250mW/Zoom Scan (5x5x7)/Cube 0:** Measurement grid: dx=8mm, dy=8mm, dz=5mm  
Reference Value = 82.61 V/m; Power Drift = 0.16 dB  
Peak SAR (extrapolated) = 17.0 W/kg  
**SAR(1 g) = 9.88 W/kg; SAR(10 g) = 5.05 W/kg**  
Maximum value of SAR (measured) = 10.3 W/kg



0 dB = 10.3 W/kg

### System Check\_HSL2450\_230328

#### DUT: Dipole 2450 MHz D2450V2

Communication System: CW; Frequency: 2450 MHz; Duty Cycle: 1:1

Medium: HSL2450\_0328 Medium parameters used:  $f = 2450$  MHz;  $\sigma = 1.815$  S/m;  $\epsilon_r = 39.184$ ;  $\rho = 1000$  kg/m<sup>3</sup>

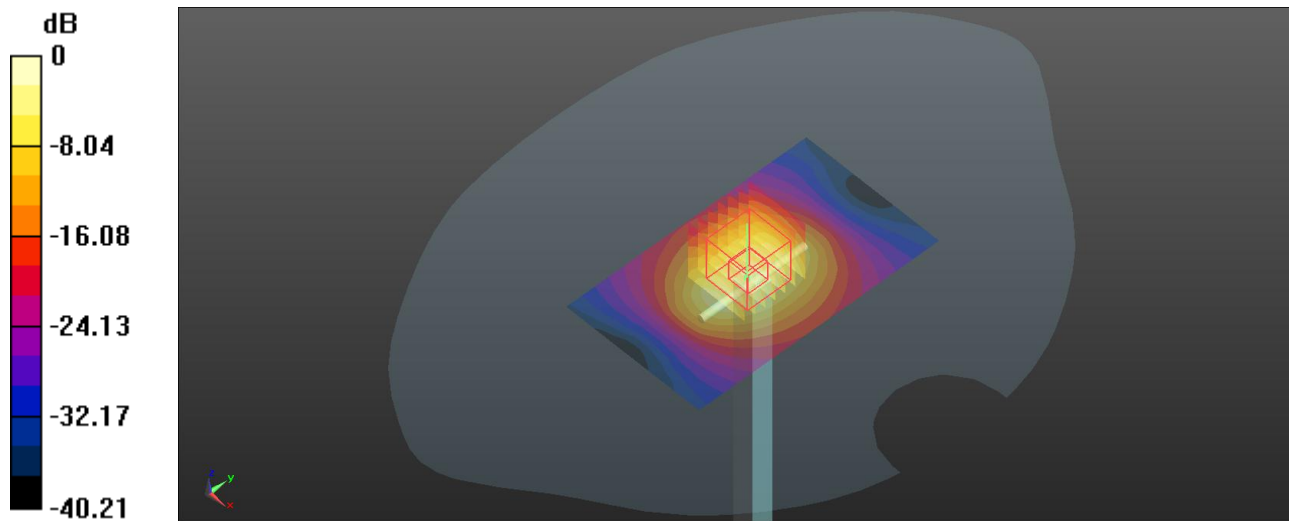
Ambient Temperature : 23.5°C; Liquid Temperature : 22.5°C

DASY5 Configuration:

- Probe: ES3DV3 - SN3268; ConvF(4.7, 4.7, 4.7) @ 2450 MHz; Calibrated: 2022/09/08
- Sensor-Surface: 4mm (Mechanical Surface Detection)
- Electronics: DAE4 Sn1288; Calibrated: 2022/08/29
- Phantom: Right v5.0; Type: QD000P40CD; Serial: TP:1502
- Measurement SW: DASY52, Version 52.10 (2); SEMCAD X Version 14.6.12 (7450)

**Pin=250mW/Area Scan (71x121x1):** Interpolated grid: dx=1.000 mm, dy=1.000 mm  
Maximum value of SAR (interpolated) = 21.6 W/kg

**Pin=250mW/Zoom Scan (7x7x7)/Cube 0:** Measurement grid: dx=5mm, dy=5mm, dz=5mm  
Reference Value = 91.28 V/m; Power Drift = -0.07 dB  
Peak SAR (extrapolated) = 26.1 W/kg  
**SAR(1 g) = 13.1 W/kg; SAR(10 g) = 6.09 W/kg**  
Maximum value of SAR (measured) = 21.3 W/kg



0 dB = 21.3 W/kg

## System Check\_HSL2600\_230328

### DUT: Dipole 2600 MHz D2600V2

Communication System: CW; Frequency: 2600 MHz; Duty Cycle: 1:1

Medium: HSL2600\_0328 Medium parameters used:  $f = 2600$  MHz;  $\sigma = 1.93$  S/m;  $\epsilon_r = 38.962$ ;  $\rho = 1000$  kg/m<sup>3</sup>

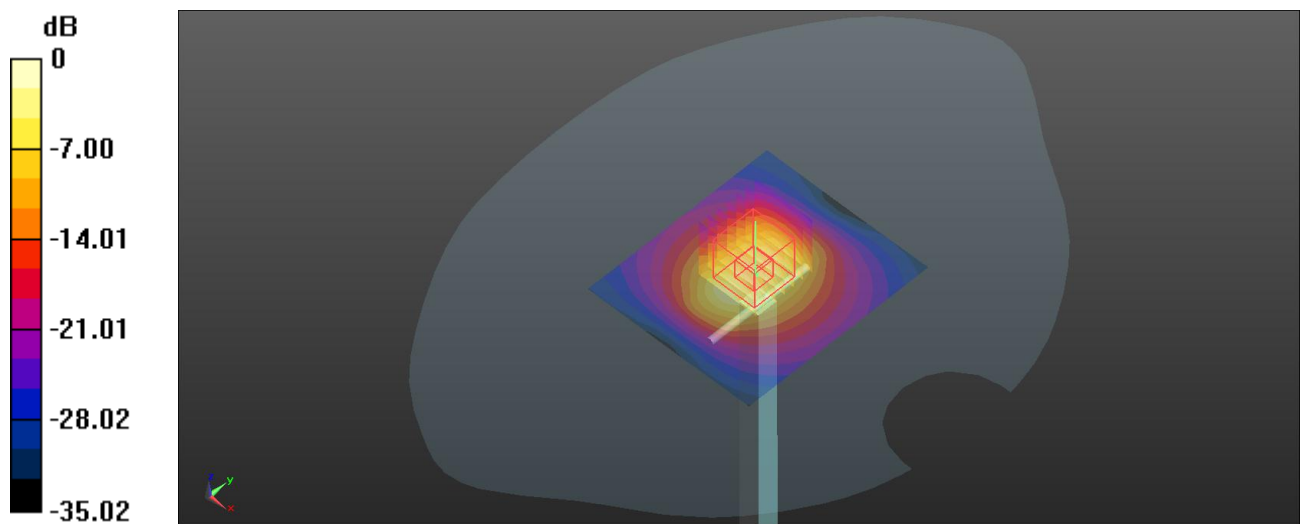
Ambient Temperature : 23.5°C; Liquid Temperature : 22.5°C

DASY5 Configuration:

- Probe: ES3DV3 - SN3268; ConvF(4.52, 4.52, 4.52) @ 2600 MHz; Calibrated: 2022/09/08
- Sensor-Surface: 4mm (Mechanical Surface Detection)
- Electronics: DAE4 Sn1288; Calibrated: 2022/08/29
- Phantom: Right v5.0; Type: QD000P40CD; Serial: TP:1502
- Measurement SW: DASY52, Version 52.10 (2); SEMCAD X Version 14.6.12 (7450)

**Pin=250mW/Area Scan (71x81x1):** Interpolated grid: dx=1.200 mm, dy=1.200 mm  
Maximum value of SAR (interpolated) = 24.9 W/kg

**Pin=250mW/Zoom Scan (7x7x7)/Cube 0:** Measurement grid: dx=5mm, dy=5mm, dz=5mm  
Reference Value = 106.8 V/m; Power Drift = 0.11 dB  
Peak SAR (extrapolated) = 31.1 W/kg  
**SAR(1 g) = 14.2 W/kg; SAR(10 g) = 6.21 W/kg**  
Maximum value of SAR (measured) = 24.7 W/kg



0 dB = 24.7 W/kg

## Appendix B. SAR Plots of SAR Measurement

The SAR plots for highest measured SAR in each exposure configuration, wireless mode and frequency band combination, and measured SAR > 1.5 W/kg are shown as follows.



### P01 GSM850\_GPRS(2Tx-slot)\_Right Cheek\_Ch128

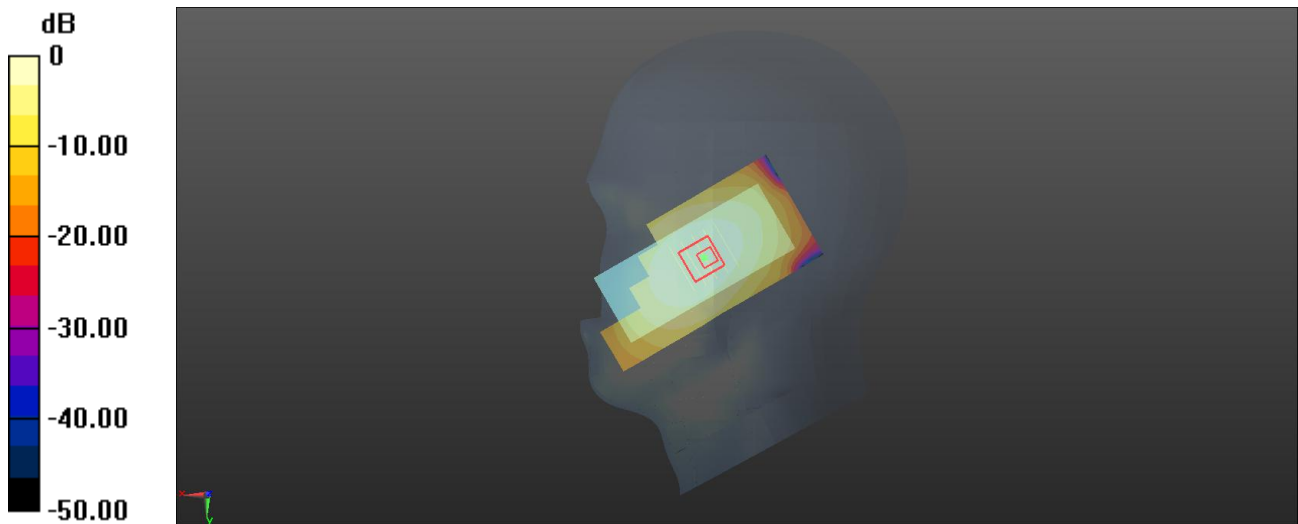
Communication System: GPRS(2Tx-slot); Frequency: 824.2 MHz; Duty Cycle: 1:4.15  
Medium: HSL835\_0328 Medium parameters used:  $f = 824.2$  MHz;  $\sigma = 0.927$  S/m;  $\epsilon_r = 43.089$ ;  $\rho = 1000$  kg/m<sup>3</sup>  
Ambient Temperature : 23.5°C; Liquid Temperature : 22.5°C

#### DASY5 Configuration:

- Probe: ES3DV3 - SN3268; ConvF(6.35, 6.35, 6.35) @ 824.2 MHz; Calibrated: 2022/09/08
- Sensor-Surface: 4mm (Mechanical Surface Detection)
- Electronics: DAE4 Sn1288; Calibrated: 2022/08/29
- Phantom: Right v5.0; Type: QD000P40CD; Serial: TP:1502
- Measurement SW: DASY52, Version 52.10 (2); SEMCAD X Version 14.6.12 (7450)

**-Area Scan (51x101x1):** Interpolated grid: dx=1.500 mm, dy=1.500 mm  
Maximum value of SAR (interpolated) = 0.413 W/kg

**-Zoom Scan (5x5x7)/Cube 0:** Measurement grid: dx=8mm, dy=8mm, dz=5mm  
Reference Value = 9.004 V/m; Power Drift = 0.13 dB  
Peak SAR (extrapolated) = 0.698 W/kg  
**SAR(1 g) = 0.545 W/kg; SAR(10 g) = 0.398 W/kg**  
Maximum value of SAR (measured) = 0.443 W/kg



0 dB = 0.443 W/kg

### P02 GSM1900\_GPRS(2Tx-slot)\_Left Cheek\_Ch810

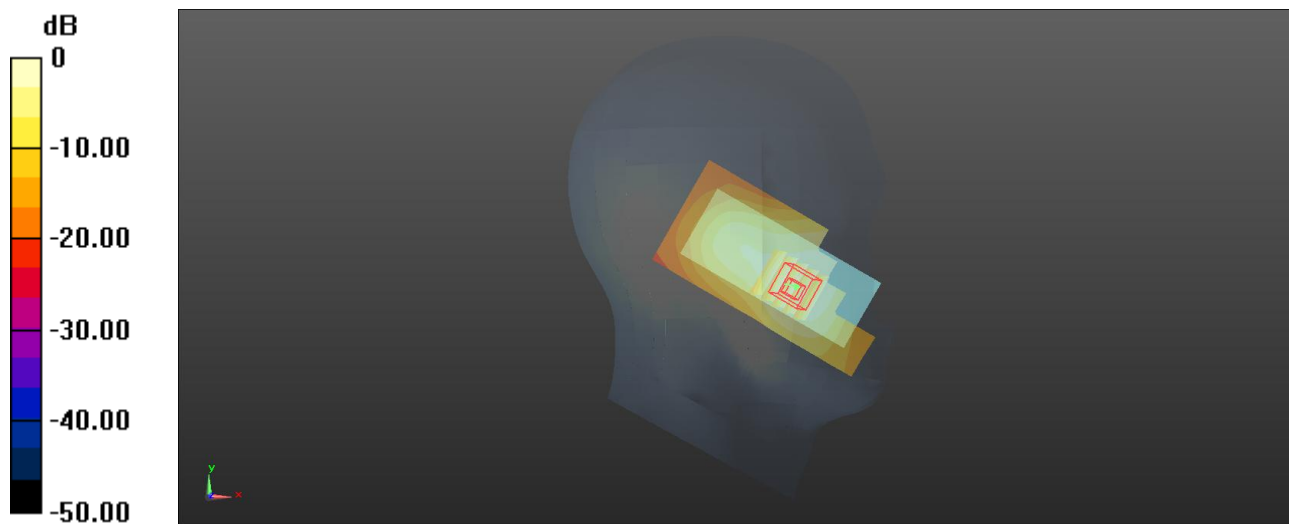
Communication System: GPRS(2Tx-slot); Frequency: 1910 MHz; Duty Cycle: 1:4.15  
Medium: HSL1900\_0328 Medium parameters used:  $f = 1910$  MHz;  $\sigma = 1.409$  S/m;  $\epsilon_r = 39.724$ ;  $\rho = 1000$  kg/m<sup>3</sup>  
Ambient Temperature : 23.5°C; Liquid Temperature : 22.5°C

#### DASY5 Configuration:

- Probe: ES3DV3 - SN3268; ConvF(5.1, 5.1, 5.1) @ 1910 MHz; Calibrated: 2022/09/08
- Sensor-Surface: 4mm (Mechanical Surface Detection)
- Electronics: DAE4 Sn1288; Calibrated: 2022/08/29
- Phantom: Right v5.0; Type: QD000P40CD; Serial: TP:1502
- Measurement SW: DASY52, Version 52.10 (2); SEMCAD X Version 14.6.12 (7450)

**-Area Scan (51x101x1):** Interpolated grid: dx=1.500 mm, dy=1.500 mm  
Maximum value of SAR (interpolated) = 0.471 W/kg

**-Zoom Scan (5x5x7)/Cube 0:** Measurement grid: dx=8mm, dy=8mm, dz=5mm  
Reference Value = 5.851 V/m; Power Drift = -0.05 dB  
Peak SAR (extrapolated) = 0.631 W/kg  
**SAR(1 g) = 0.512 W/kg; SAR(10 g) = 0.323 W/kg**  
Maximum value of SAR (measured) = 0.432 W/kg



0 dB = 0.432 W/kg

### P03 WCDMA II\_RMC12.2K\_Right Cheek\_Ch9538

Communication System: WCDMA; Frequency: 1907.6 MHz; Duty Cycle: 1:1

Medium: HSL1900\_0328 Medium parameters used:  $f = 1908$  MHz;  $\sigma = 1.408$  S/m;  $\epsilon_r = 39.726$ ;  $\rho = 1000$  kg/m<sup>3</sup>

Ambient Temperature : 23.5°C; Liquid Temperature : 22.5°C

#### DASY5 Configuration:

- Probe: ES3DV3 - SN3268; ConvF(5.1, 5.1, 5.1) @ 1907.6 MHz; Calibrated: 2022/09/08
- Sensor-Surface: 4mm (Mechanical Surface Detection)
- Electronics: DAE4 Sn1288; Calibrated: 2022/08/29
- Phantom: Right v5.0; Type: QD000P40CD; Serial: TP:1502
- Measurement SW: DASY52, Version 52.10 (2); SEMCAD X Version 14.6.12 (7450)

**-Area Scan (51x101x1):** Interpolated grid: dx=1.500 mm, dy=1.500 mm

Maximum value of SAR (interpolated) = 0.686 W/kg

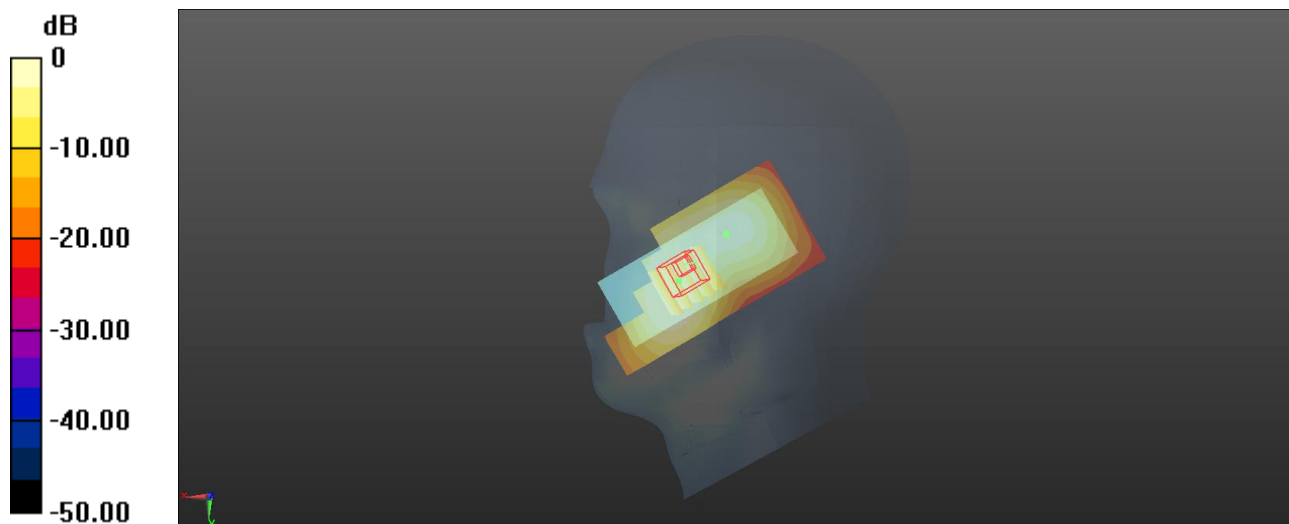
**-Zoom Scan (5x5x7)/Cube 0:** Measurement grid: dx=8mm, dy=8mm, dz=5mm

Reference Value = 9.433 V/m; Power Drift = 0.09 dB

Peak SAR (extrapolated) = 0.925 W/kg

**SAR(1 g) = 0.616 W/kg; SAR(10 g) = 0.401 W/kg**

Maximum value of SAR (measured) = 0.673 W/kg



0 dB = 0.673 W/kg

### P04 WCDMA IV\_RMC12.2K\_Right Cheek\_Ch1513

Communication System: WCDMA; Frequency: 1752.6 MHz; Duty Cycle: 1:1

Medium: HSL1750\_0328 Medium parameters used:  $f = 1753$  MHz;  $\sigma = 1.423$  S/m;  $\epsilon_r = 40.791$ ;  $\rho = 1000$  kg/m<sup>3</sup>

Ambient Temperature : 23.5°C; Liquid Temperature : 22.5°C

#### DASY5 Configuration:

- Probe: ES3DV3 - SN3268; ConvF(5.38, 5.38, 5.38) @ 1752.6 MHz; Calibrated: 2022/09/08
- Sensor-Surface: 4mm (Mechanical Surface Detection)
- Electronics: DAE4 Sn1288; Calibrated: 2022/08/29
- Phantom: Right v5.0; Type: QD000P40CD; Serial: TP:1502
- Measurement SW: DASY52, Version 52.10 (2); SEMCAD X Version 14.6.12 (7450)

**-Area Scan (51x101x1):** Interpolated grid: dx=1.500 mm, dy=1.500 mm

Maximum value of SAR (interpolated) = 0.678 W/kg

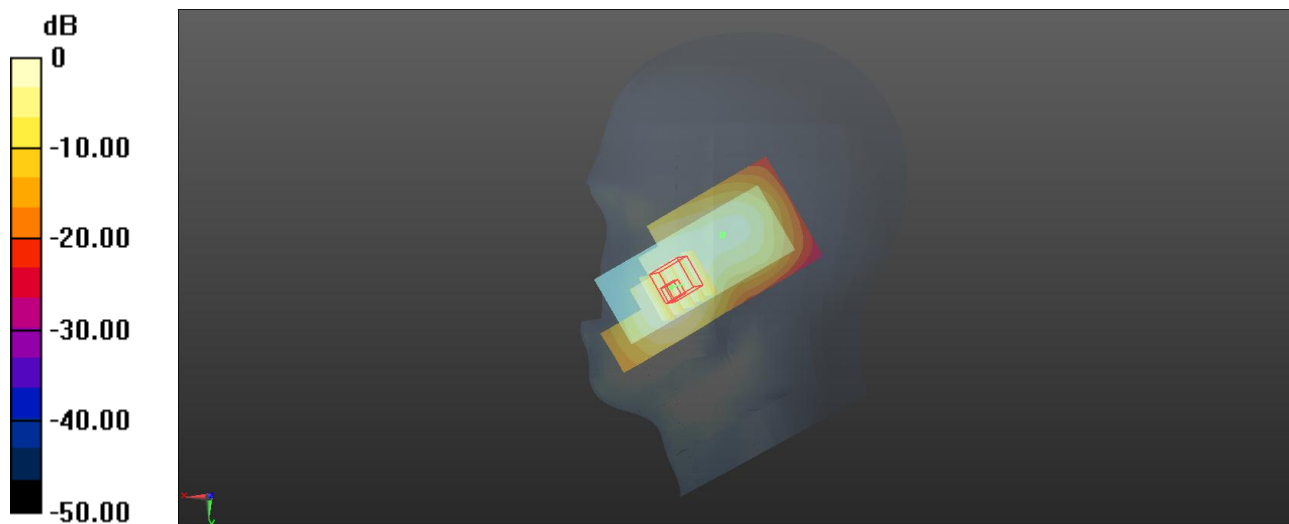
**-Zoom Scan (5x5x7)/Cube 0:** Measurement grid: dx=8mm, dy=8mm, dz=5mm

Reference Value = 9.383 V/m; Power Drift = 0.06 dB

Peak SAR (extrapolated) = 0.924 W/kg

**SAR(1 g) = 0.569 W/kg; SAR(10 g) = 0.381 W/kg**

Maximum value of SAR (measured) = 0.634 W/kg



### P05 WCDMA V\_RMC12.2K\_Right Cheek\_Ch4233

Communication System: WCDMA; Frequency: 846.6 MHz; Duty Cycle: 1:1

Medium: HSL835\_0328 Medium parameters used:  $f = 847$  MHz;  $\sigma = 0.936$  S/m;  $\epsilon_r = 42.946$ ;  $\rho = 1000$  kg/m<sup>3</sup>

Ambient Temperature : 23.5°C; Liquid Temperature : 22.5°C

#### DASY5 Configuration:

- Probe: ES3DV3 - SN3268; ConvF(6.35, 6.35, 6.35) @ 846.6 MHz; Calibrated: 2022/09/08
- Sensor-Surface: 4mm (Mechanical Surface Detection)
- Electronics: DAE4 Sn1288; Calibrated: 2022/08/29
- Phantom: Right v5.0; Type: QD000P40CD; Serial: TP:1502
- Measurement SW: DASY52, Version 52.10 (2); SEMCAD X Version 14.6.12 (7450)

**-Area Scan (51x101x1):** Interpolated grid: dx=1.500 mm, dy=1.500 mm

Maximum value of SAR (interpolated) = 0.434 W/kg

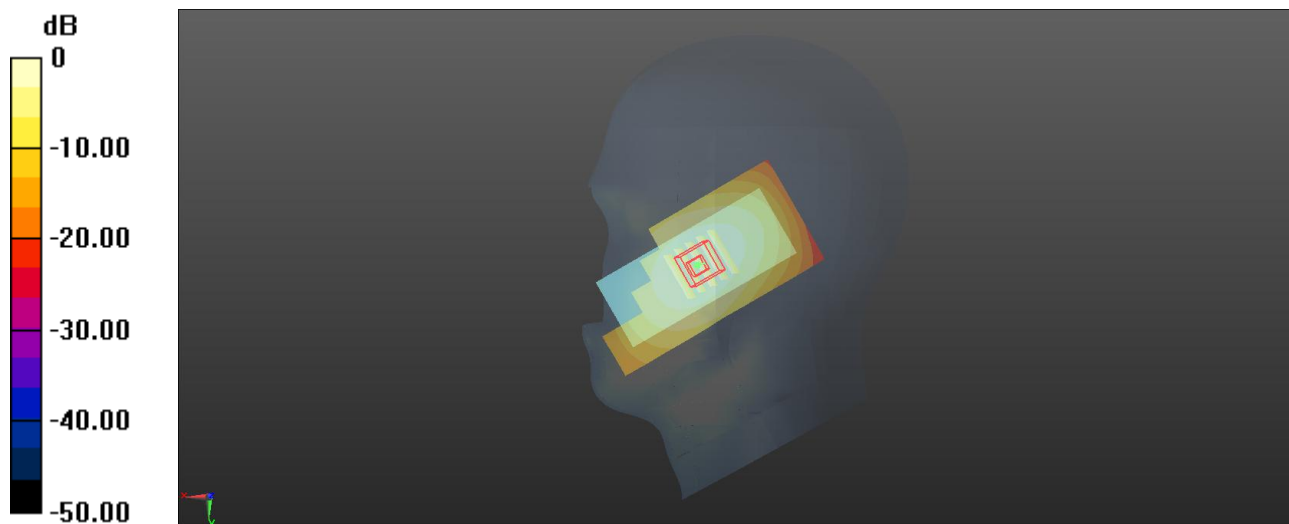
**-Zoom Scan (5x5x7)/Cube 0:** Measurement grid: dx=8mm, dy=8mm, dz=5mm

Reference Value = 8.823 V/m; Power Drift = 0.10 dB

Peak SAR (extrapolated) = 0.518 W/kg

**SAR(1 g) = 0.625 W/kg; SAR(10 g) = 0.396 W/kg**

Maximum value of SAR (measured) = 0.431 W/kg



0 dB = 0.431 W/kg

### P06 LTE2\_QPSK20M\_Left Cheek\_Ch19100\_1RB\_OS0

Communication System: LTE\_FDD; Frequency: 1900 MHz; Duty Cycle: 1:1

Medium: HSL1900\_0328 Medium parameters used:  $f = 1900$  MHz;  $\sigma = 1.403$  S/m;  $\epsilon_r = 39.733$ ;  $\rho = 1000$  kg/m<sup>3</sup>

Ambient Temperature : 23.5°C; Liquid Temperature : 22.5°C

#### DASY5 Configuration:

- Probe: ES3DV3 - SN3268; ConvF(5.1, 5.1, 5.1) @ 1900 MHz; Calibrated: 2022/09/08
- Sensor-Surface: 4mm (Mechanical Surface Detection)
- Electronics: DAE4 Sn1288; Calibrated: 2022/08/29
- Phantom: Right v5.0; Type: QD000P40CD; Serial: TP:1502
- Measurement SW: DASY52, Version 52.10 (2); SEMCAD X Version 14.6.12 (7450)

**-Area Scan (51x101x1):** Interpolated grid: dx=1.500 mm, dy=1.500 mm

Maximum value of SAR (interpolated) = 0.729 W/kg

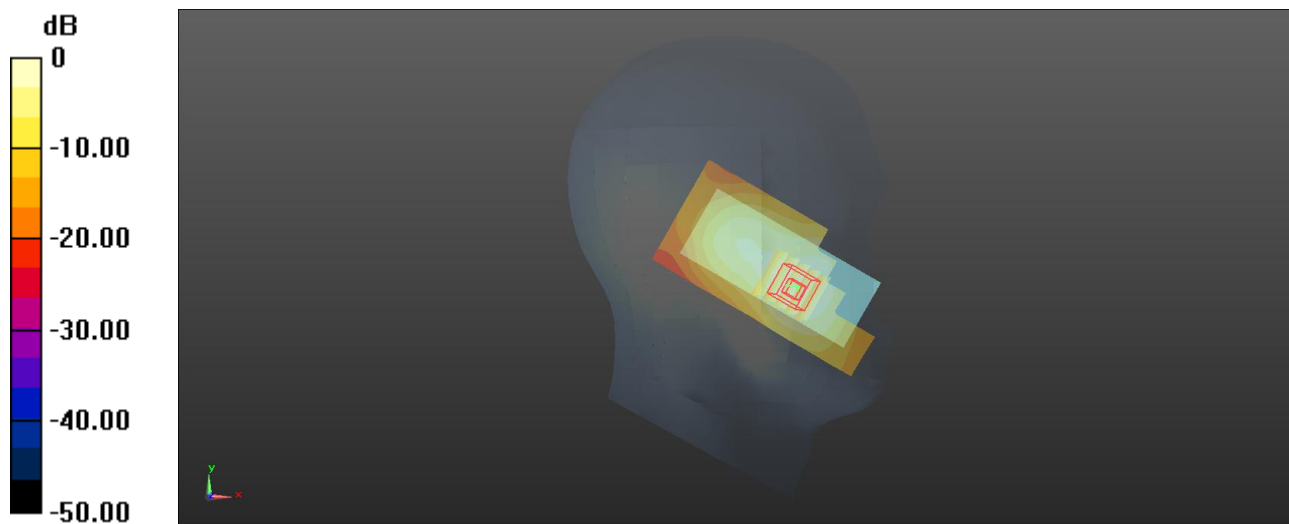
**-Zoom Scan (5x5x7)/Cube 0:** Measurement grid: dx=8mm, dy=8mm, dz=5mm

Reference Value = 7.221 V/m; Power Drift = 0.05 dB

Peak SAR (extrapolated) = 0.996 W/kg

**SAR(1 g) = 0.634 W/kg; SAR(10 g) = 0.385 W/kg**

Maximum value of SAR (measured) = 0.673 W/kg



0 dB = 0.673 W/kg

### P07 LTE5\_QPSK20M\_Right Cheek\_Ch20525\_1RB\_OS0

Communication System: LTE\_FDD; Frequency: 836.5 MHz; Duty Cycle: 1:1

Medium: HSL835\_0328 Medium parameters used:  $f = 836.5$  MHz;  $\sigma = 0.932$  S/m;  $\epsilon_r = 42.998$ ;  $\rho = 1000$  kg/m<sup>3</sup>

Ambient Temperature : 23.5°C; Liquid Temperature : 22.5°C

#### DASY5 Configuration:

- Probe: ES3DV3 - SN3268; ConvF(6.35, 6.35, 6.35) @ 836.5 MHz; Calibrated: 2022/09/08
- Sensor-Surface: 4mm (Mechanical Surface Detection)
- Electronics: DAE4 Sn1288; Calibrated: 2022/08/29
- Phantom: Right v5.0; Type: QD000P40CD; Serial: TP:1502
- Measurement SW: DASY52, Version 52.10 (2); SEMCAD X Version 14.6.12 (7450)

**-Area Scan (51x101x1):** Interpolated grid: dx=1.500 mm, dy=1.500 mm

Maximum value of SAR (interpolated) = 0.429 W/kg

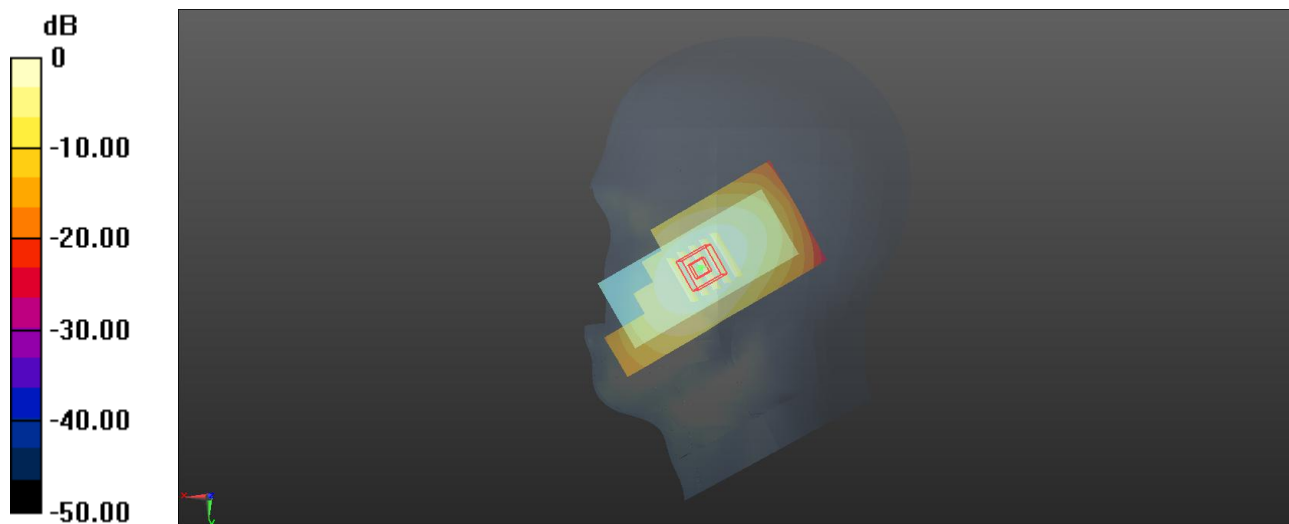
**-Zoom Scan (5x5x7)/Cube 0:** Measurement grid: dx=8mm, dy=8mm, dz=5mm

Reference Value = 8.825 V/m; Power Drift = 0.07 dB

Peak SAR (extrapolated) = 0.512 W/kg

**SAR(1 g) = 0.511 W/kg; SAR(10 g) = 0.359 W/kg**

Maximum value of SAR (measured) = 0.425 W/kg



0 dB = 0.425 W/kg

### P08 LTE7\_QPSK20M\_Right Cheek\_Ch21350\_1RB\_OS0

Communication System: LTE\_FDD; Frequency: 2560 MHz; Duty Cycle: 1:1

Medium: HSL2600\_0328 Medium parameters used:  $f = 2560$  MHz;  $\sigma = 1.9$  S/m;  $\epsilon_r = 39.029$ ;  $\rho = 1000$  kg/m<sup>3</sup>

Ambient Temperature : 23.5°C; Liquid Temperature : 22.5°C

#### DASY5 Configuration:

- Probe: ES3DV3 - SN3268; ConvF(4.52, 4.52, 4.52) @ 2560 MHz; Calibrated: 2022/09/08
- Sensor-Surface: 4mm (Mechanical Surface Detection)
- Electronics: DAE4 Sn1288; Calibrated: 2022/08/29
- Phantom: Right v5.0; Type: QD000P40CD; Serial: TP:1502
- Measurement SW: DASY52, Version 52.10 (2); SEMCAD X Version 14.6.12 (7450)

**-Area Scan (61x121x1):** Interpolated grid: dx=1.200 mm, dy=1.200 mm

Maximum value of SAR (interpolated) = 0.381 W/kg

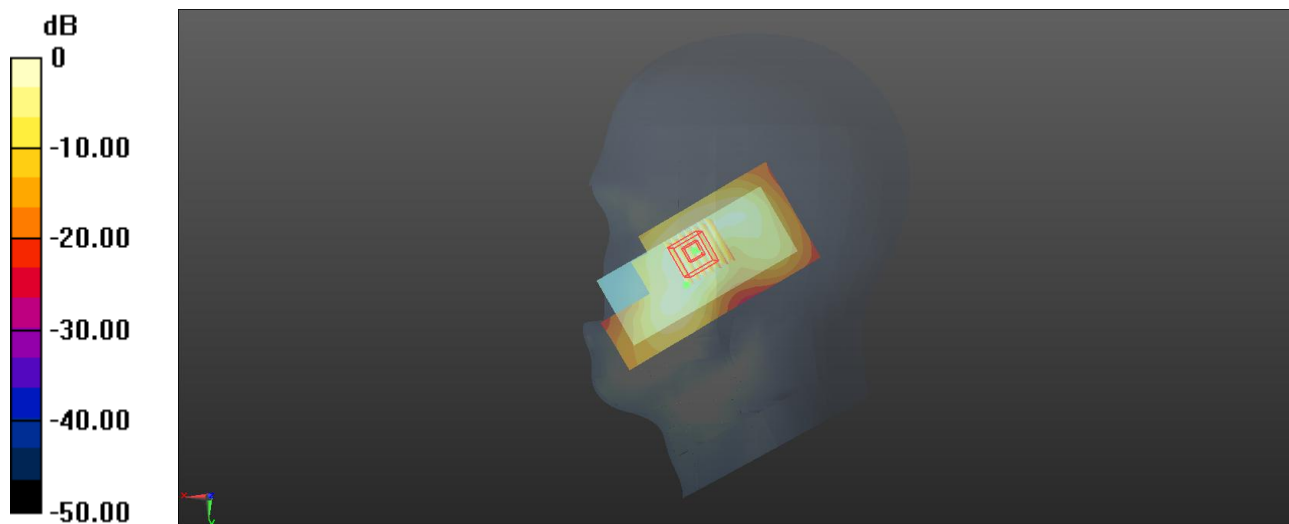
**-Zoom Scan (7x7x7)/Cube 0:** Measurement grid: dx=5mm, dy=5mm, dz=5mm

Reference Value = 5.473 V/m; Power Drift = 0.04 dB

Peak SAR (extrapolated) = 0.610 W/kg

**SAR(1 g) = 0.453 W/kg; SAR(10 g) = 0.214 W/kg**

Maximum value of SAR (measured) = 0.389 W/kg



0 dB = 0.389 W/kg



### P09 LTE66\_QPSK20M\_Right Cheek\_Ch132322\_1RB\_OS50

Communication System: LTE\_FDD; Frequency: 1745 MHz; Duty Cycle: 1:1

Medium: HSL1750\_0328 Medium parameters used:  $f = 1745$  MHz;  $\sigma = 1.418$  S/m;  $\epsilon_r = 40.806$ ;  $\rho = 1000$  kg/m<sup>3</sup>

Ambient Temperature : 23.5°C; Liquid Temperature : 22.5°C

#### DASY5 Configuration:

- Probe: ES3DV3 - SN3268; ConvF(5.38, 5.38, 5.38) @ 1745 MHz; Calibrated: 2022/09/08
- Sensor-Surface: 4mm (Mechanical Surface Detection)
- Electronics: DAE4 Sn1288; Calibrated: 2022/08/29
- Phantom: Right v5.0; Type: QD000P40CD; Serial: TP:1502
- Measurement SW: DASY52, Version 52.10 (2); SEMCAD X Version 14.6.12 (7450)

**-Area Scan (51x101x1):** Interpolated grid: dx=1.500 mm, dy=1.500 mm

Maximum value of SAR (interpolated) = 0.828 W/kg

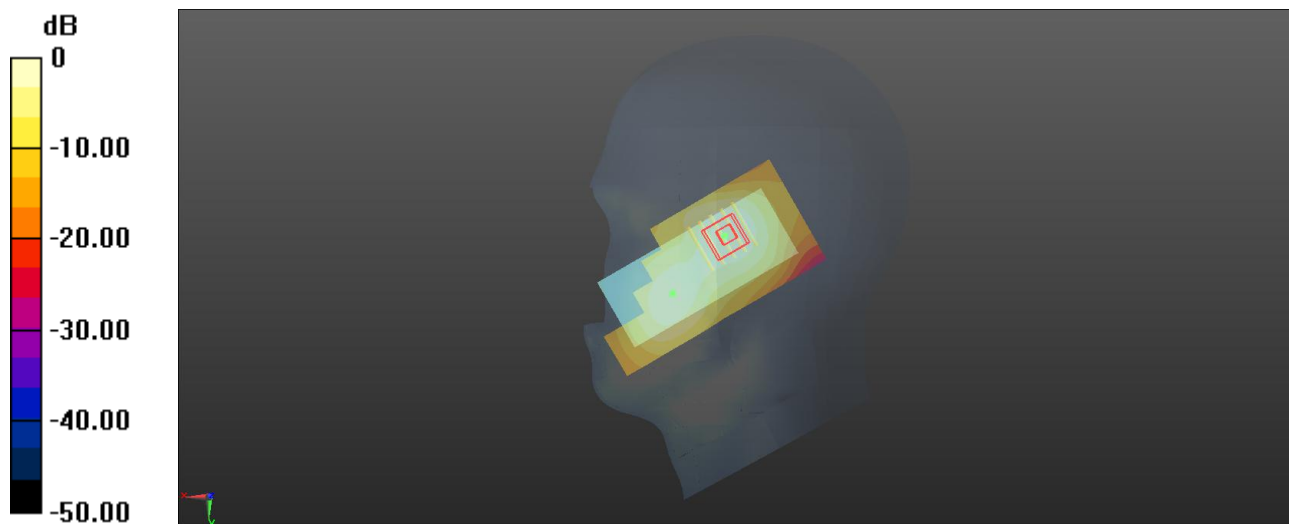
**-Zoom Scan (5x5x7)/Cube 0:** Measurement grid: dx=8mm, dy=8mm, dz=5mm

Reference Value = 10.04 V/m; Power Drift = -0.02 dB

Peak SAR (extrapolated) = 1.08 W/kg

**SAR(1 g) = 0.792 W/kg; SAR(10 g) = 0.509 W/kg**

Maximum value of SAR (measured) = 0.814 W/kg



0 dB = 0.814 W/kg

### P10 BT\_GFSK\_Right Cheek\_Ch0

Communication System: Bluetooth; Frequency: 2402 MHz; Duty Cycle: 1:1.292

Medium: HSL2450\_0328 Medium parameters used:  $f = 2402$  MHz;  $\sigma = 1.778$  S/m;  $\epsilon_r = 39.274$ ;  $\rho = 1000$  kg/m<sup>3</sup>

Ambient Temperature : 23.5°C; Liquid Temperature : 22.5°C

#### DASY5 Configuration:

- Probe: ES3DV3 - SN3268; ConvF(4.7, 4.7, 4.7) @ 2402 MHz; Calibrated: 2022/09/08
- Sensor-Surface: 4mm (Mechanical Surface Detection)
- Electronics: DAE4 Sn1288; Calibrated: 2022/08/29
- Phantom: Right v5.0; Type: QD000P40CD; Serial: TP:1502
- Measurement SW: DASY52, Version 52.10 (2); SEMCAD X Version 14.6.12 (7450)

**-Area Scan (51x101x1):** Interpolated grid: dx=1.500 mm, dy=1.500 mm

Maximum value of SAR (interpolated) = 0.0200 W/kg

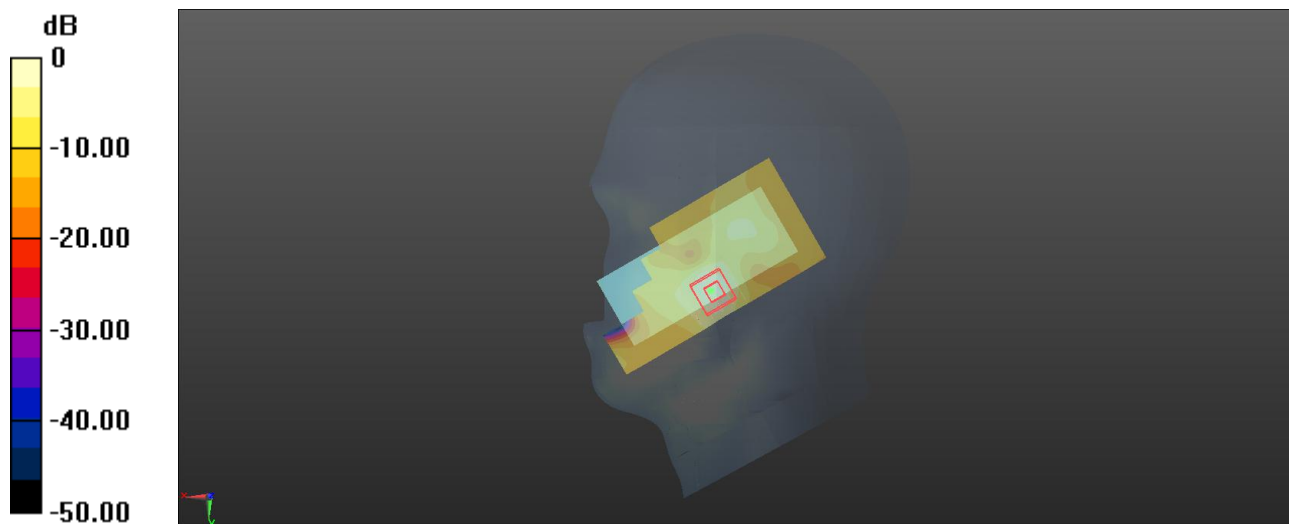
**-Zoom Scan (5x5x7)/Cube 0:** Measurement grid: dx=8mm, dy=8mm, dz=5mm

Reference Value = 1.526 V/m; Power Drift = -0.09 dB

Peak SAR (extrapolated) = 0.0510 W/kg

**SAR(1 g) = 0.018 W/kg; SAR(10 g) = 0.008 W/kg**

Maximum value of SAR (measured) = 0.0195 W/kg



0 dB = 0.0195 W/kg

### P11 GSM850\_GPRS(2Tx-slot)\_Rear Face\_1.5cm\_Ch251

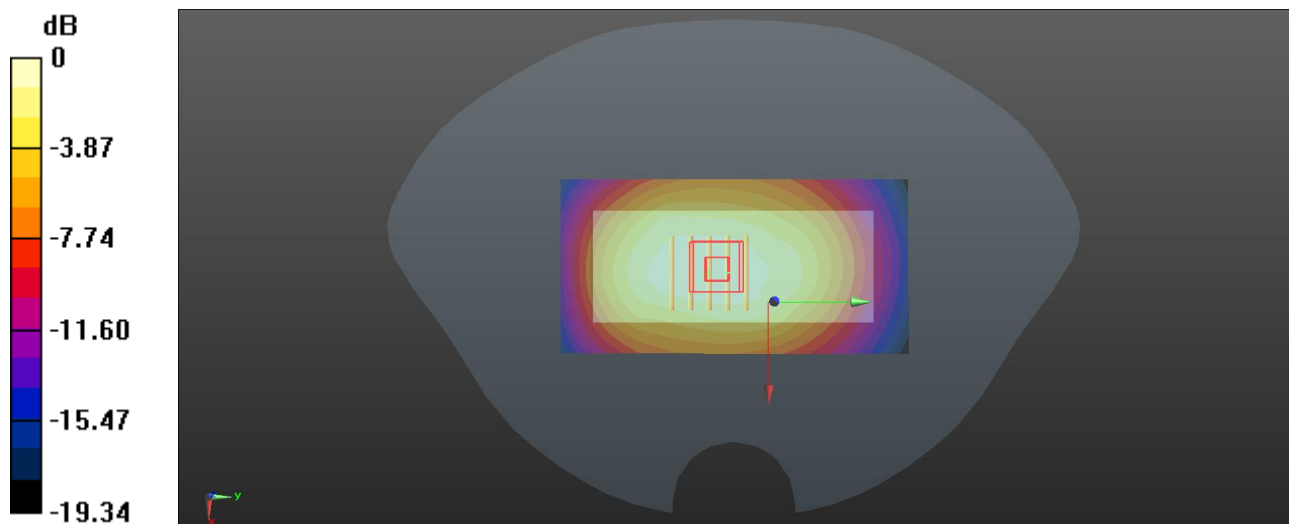
Communication System: GPRS(2Tx-slot); Frequency: 848.8 MHz; Duty Cycle: 1:4.15  
Medium: HSL835\_0328 Medium parameters used:  $f = 849$  MHz;  $\sigma = 0.937$  S/m;  $\epsilon_r = 42.941$ ;  $\rho = 1000$  kg/m<sup>3</sup>  
Ambient Temperature : 23.5°C; Liquid Temperature : 22.5°C

#### DASY5 Configuration:

- Probe: ES3DV3 - SN3268; ConvF(6.35, 6.35, 6.35) @ 848.8 MHz; Calibrated: 2022/09/08
- Sensor-Surface: 4mm (Mechanical Surface Detection)
- Electronics: DAE4 Sn1288; Calibrated: 2022/08/29
- Phantom: Right v5.0; Type: QD000P40CD; Serial: TP:1502
- Measurement SW: DASY52, Version 52.10 (2); SEMCAD X Version 14.6.12 (7450)

**-Area Scan (51x101x1):** Interpolated grid: dx=1.500 mm, dy=1.500 mm  
Maximum value of SAR (interpolated) = 0.954 W/kg

**-Zoom Scan (5x5x7)/Cube 0:** Measurement grid: dx=8mm, dy=8mm, dz=5mm  
Reference Value = 31.66 V/m; Power Drift = -0.11 dB  
Peak SAR (extrapolated) = 1.38 W/kg  
**SAR(1 g) = 0.760 W/kg; SAR(10 g) = 0.553 W/kg**  
Maximum value of SAR (measured) = 0.942 W/kg



0 dB = 0.942 W/kg

### P12 GSM1900\_GPRS(2Tx-slot)\_Rear Face\_1.5cm\_Ch810

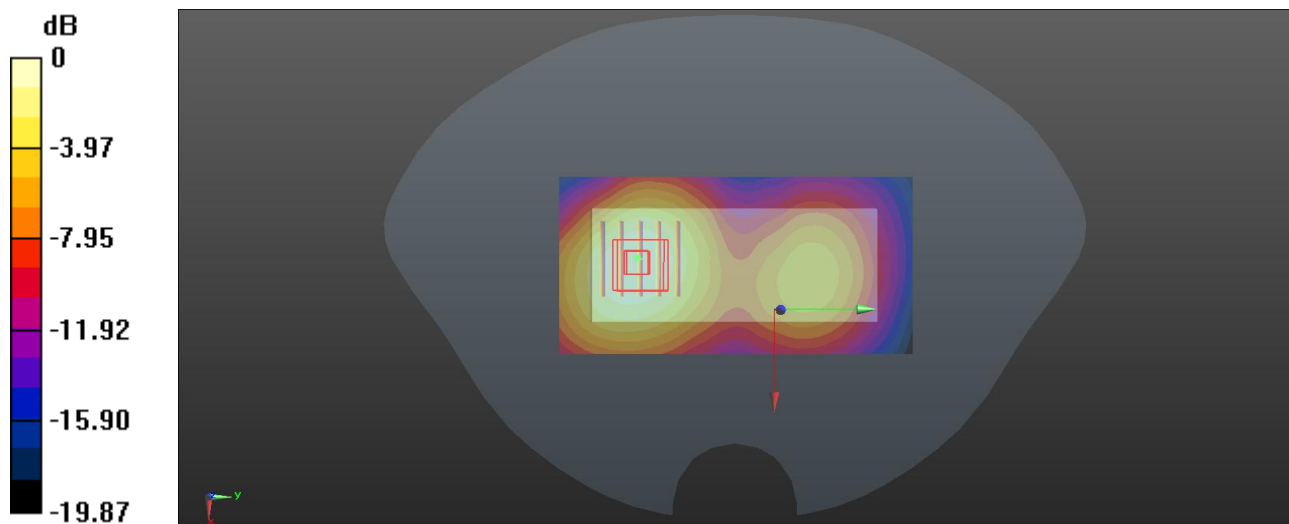
Communication System: GPRS(2Tx-slot); Frequency: 1910 MHz; Duty Cycle: 1:4.15  
Medium: HSL1900\_0328 Medium parameters used:  $f = 1910$  MHz;  $\sigma = 1.409$  S/m;  $\epsilon_r = 39.724$ ;  $\rho = 1000$  kg/m<sup>3</sup>  
Ambient Temperature : 23.5°C; Liquid Temperature : 22.5°C

#### DASY5 Configuration:

- Probe: ES3DV3 - SN3268; ConvF(5.1, 5.1, 5.1) @ 1910 MHz; Calibrated: 2022/09/08
- Sensor-Surface: 4mm (Mechanical Surface Detection)
- Electronics: DAE4 Sn1288; Calibrated: 2022/08/29
- Phantom: Right v5.0; Type: QD000P40CD; Serial: TP:1502
- Measurement SW: DASY52, Version 52.10 (2); SEMCAD X Version 14.6.12 (7450)

**-Area Scan (51x101x1):** Interpolated grid: dx=1.500 mm, dy=1.500 mm  
Maximum value of SAR (interpolated) = 0.581 W/kg

**-Zoom Scan (5x5x7)/Cube 0:** Measurement grid: dx=8mm, dy=8mm, dz=5mm  
Reference Value = 7.999 V/m; Power Drift = 0.03 dB  
Peak SAR (extrapolated) = 0.884 W/kg  
**SAR(1 g) = 0.568 W/kg; SAR(10 g) = 0.353 W/kg**  
Maximum value of SAR (measured) = 0.553 W/kg



0 dB = 0.553 W/kg

### P13 WCDMA II\_RMC12.2K\_Rear Face\_1.5cm\_Ch9538

Communication System: WCDMA; Frequency: 1907.6 MHz; Duty Cycle: 1:1

Medium: HSL1900\_0328 Medium parameters used:  $f = 1908$  MHz;  $\sigma = 1.408$  S/m;  $\epsilon_r = 39.726$ ;  $\rho = 1000$  kg/m<sup>3</sup>

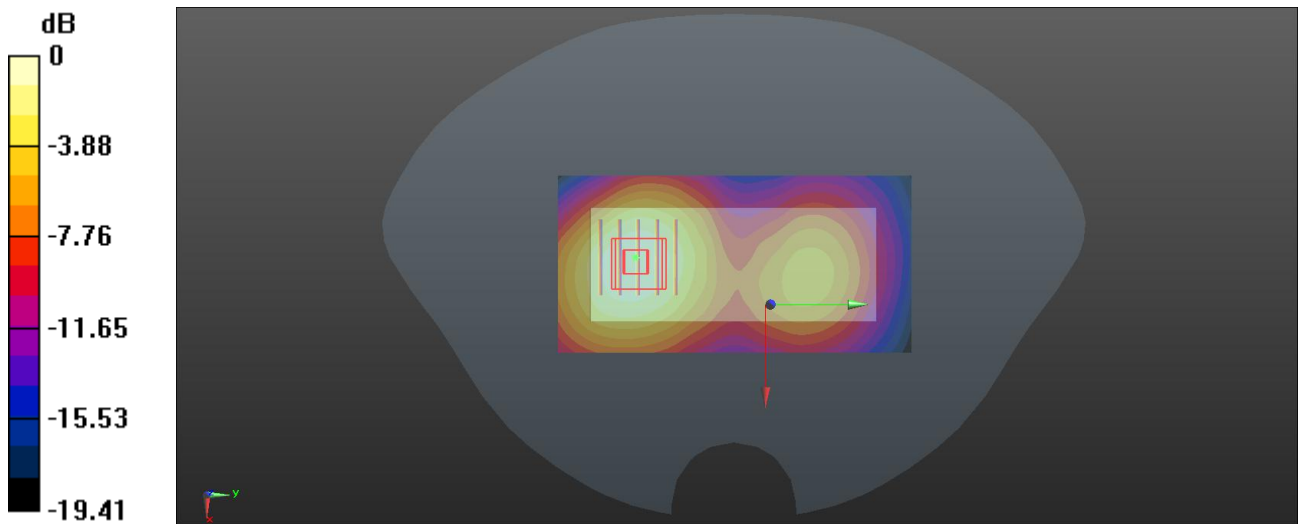
Ambient Temperature : 23.5°C; Liquid Temperature : 22.5°C

DASY5 Configuration:

- Probe: ES3DV3 - SN3268; ConvF(5.1, 5.1, 5.1) @ 1907.6 MHz; Calibrated: 2022/09/08
- Sensor-Surface: 4mm (Mechanical Surface Detection)
- Electronics: DAE4 Sn1288; Calibrated: 2022/08/29
- Phantom: Right v5.0; Type: QD000P40CD; Serial: TP:1502
- Measurement SW: DASY52, Version 52.10 (2); SEMCAD X Version 14.6.12 (7450)

**-Area Scan (51x101x1):** Interpolated grid: dx=1.500 mm, dy=1.500 mm  
 Maximum value of SAR (interpolated) = 0.778 W/kg

**-Zoom Scan (5x5x7)/Cube 0:** Measurement grid: dx=8mm, dy=8mm, dz=5mm  
 Reference Value = 9.989 V/m; Power Drift = -0.10 dB  
 Peak SAR (extrapolated) = 1.18 W/kg  
**SAR(1 g) = 0.731 W/kg; SAR(10 g) = 0.461 W/kg**  
 Maximum value of SAR (measured) = 0.759 W/kg



0 dB = 0.759 W/kg

### P14 WCDMA IV\_RMC12.2K\_Rear Face\_1.5cm\_Ch1312

Communication System: WCDMA; Frequency: 1712.4 MHz; Duty Cycle: 1:1

Medium: HSL1750\_0328 Medium parameters used:  $f = 1712.4$  MHz;  $\sigma = 1.393$  S/m;  $\epsilon_r = 40.843$ ;  $\rho = 1000$  kg/m<sup>3</sup>

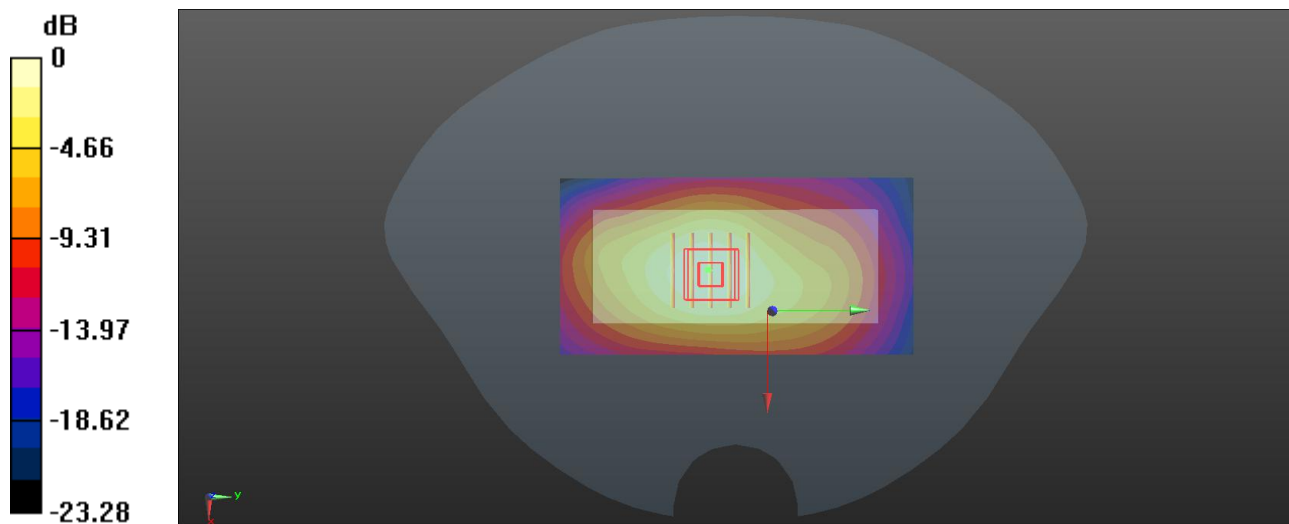
Ambient Temperature : 23.5°C; Liquid Temperature : 22.5°C

DASY5 Configuration:

- Probe: ES3DV3 - SN3268; ConvF(5.38, 5.38, 5.38) @ 1712.4 MHz; Calibrated: 2022/09/08
- Sensor-Surface: 4mm (Mechanical Surface Detection)
- Electronics: DAE4 Sn1288; Calibrated: 2022/08/29
- Phantom: Right v5.0; Type: QD000P40CD; Serial: TP:1502
- Measurement SW: DASY52, Version 52.10 (2); SEMCAD X Version 14.6.12 (7450)

**-Area Scan (51x101x1):** Interpolated grid: dx=1.500 mm, dy=1.500 mm  
Maximum value of SAR (interpolated) = 0.848 W/kg

**-Zoom Scan (5x5x7)/Cube 0:** Measurement grid: dx=8mm, dy=8mm, dz=5mm  
Reference Value = 22.49 V/m; Power Drift = -0.07 dB  
Peak SAR (extrapolated) = 1.18 W/kg  
**SAR(1 g) = 0.813 W/kg; SAR(10 g) = 0.491 W/kg**  
Maximum value of SAR (measured) = 0.831 W/kg



0 dB = 0.831 W/kg

### P15 WCDMA V\_RMC12.2K\_Rear Face\_1.5cm\_Ch4233

Communication System: WCDMA; Frequency: 846.6 MHz; Duty Cycle: 1:1

Medium: HSL835\_0328 Medium parameters used:  $f = 847$  MHz;  $\sigma = 0.936$  S/m;  $\epsilon_r = 42.946$ ;  $\rho = 1000$  kg/m<sup>3</sup>

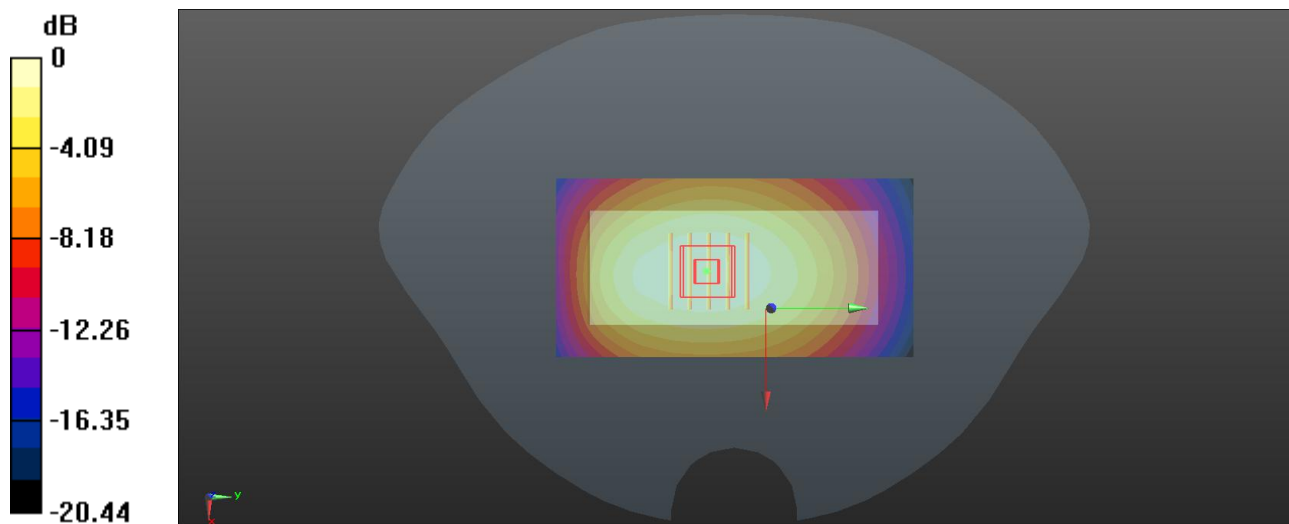
Ambient Temperature : 23.5°C; Liquid Temperature : 22.5°C

DASY5 Configuration:

- Probe: ES3DV3 - SN3268; ConvF(6.35, 6.35, 6.35) @ 846.6 MHz; Calibrated: 2022/09/08
- Sensor-Surface: 4mm (Mechanical Surface Detection)
- Electronics: DAE4 Sn1288; Calibrated: 2022/08/29
- Phantom: Right v5.0; Type: QD000P40CD; Serial: TP:1502
- Measurement SW: DASY52, Version 52.10 (2); SEMCAD X Version 14.6.12 (7450)

**-Area Scan (51x101x1):** Interpolated grid: dx=1.500 mm, dy=1.500 mm  
Maximum value of SAR (interpolated) = 0.413 W/kg

**-Zoom Scan (5x5x7)/Cube 0:** Measurement grid: dx=8mm, dy=8mm, dz=5mm  
Reference Value = 20.59 V/m; Power Drift = -0.01 dB  
Peak SAR (extrapolated) = 0.523 W/kg  
**SAR(1 g) = 0.841 W/kg; SAR(10 g) = 0.528 W/kg**  
Maximum value of SAR (measured) = 0.416 W/kg



0 dB = 0.416 W/kg

### P16 LTE 2\_QPSK20M\_Rear Face\_1.5cm\_Ch18700\_1RB\_OS0

Communication System: LTE\_FDD; Frequency: 1860 MHz; Duty Cycle: 1:1

Medium: HSL1900\_0328 Medium parameters used:  $f = 1860$  MHz;  $\sigma = 1.381$  S/m;  $\epsilon_r = 39.764$ ;  $\rho = 1000$  kg/m<sup>3</sup>

Ambient Temperature : 23.5°C; Liquid Temperature : 22.5°C

#### DASY5 Configuration:

- Probe: ES3DV3 - SN3268; ConvF(5.1, 5.1, 5.1) @ 1860 MHz; Calibrated: 2022/09/08
- Sensor-Surface: 4mm (Mechanical Surface Detection)
- Electronics: DAE4 Sn1288; Calibrated: 2022/08/29
- Phantom: Right v5.0; Type: QD000P40CD; Serial: TP:1502
- Measurement SW: DASY52, Version 52.10 (2); SEMCAD X Version 14.6.12 (7450)

**-Area Scan (51x101x1):** Interpolated grid: dx=1.500 mm, dy=1.500 mm

Maximum value of SAR (interpolated) = 0.910 W/kg

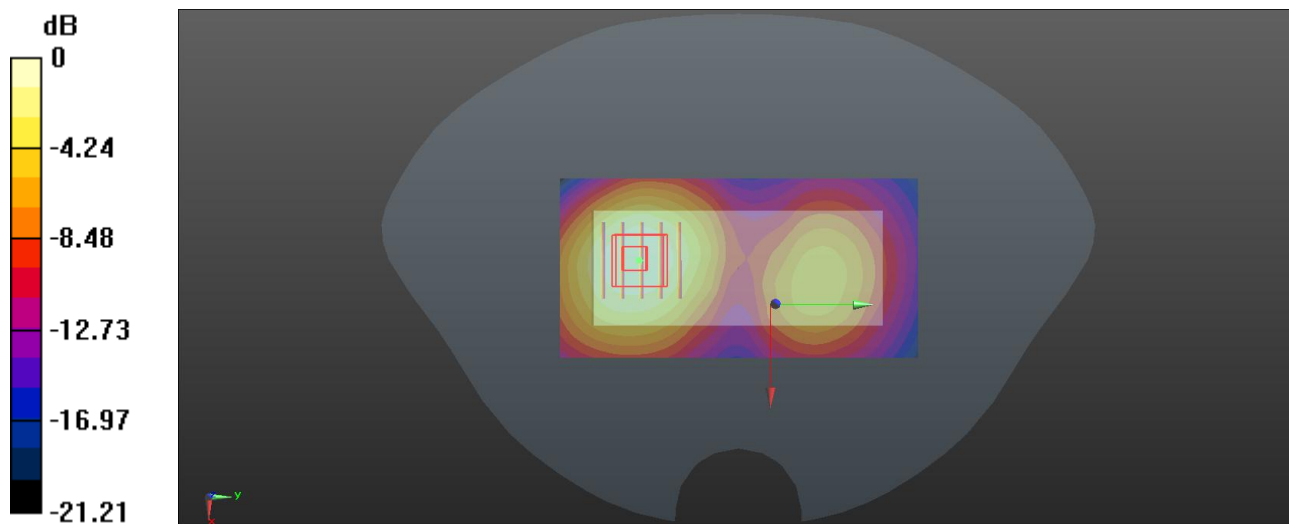
**-Zoom Scan (5x5x7)/Cube 0:** Measurement grid: dx=8mm, dy=8mm, dz=5mm

Reference Value = 8.896 V/m; Power Drift = -0.17 dB

Peak SAR (extrapolated) = 1.45 W/kg

**SAR(1 g) = 0.893 W/kg; SAR(10 g) = 0.503 W/kg**

Maximum value of SAR (measured) = 0.929 W/kg



0 dB = 0.929 W/kg



### P17 LTE 5\_QPSK10M\_Rear Face\_1.5cm\_Ch20450\_1RB\_OS0

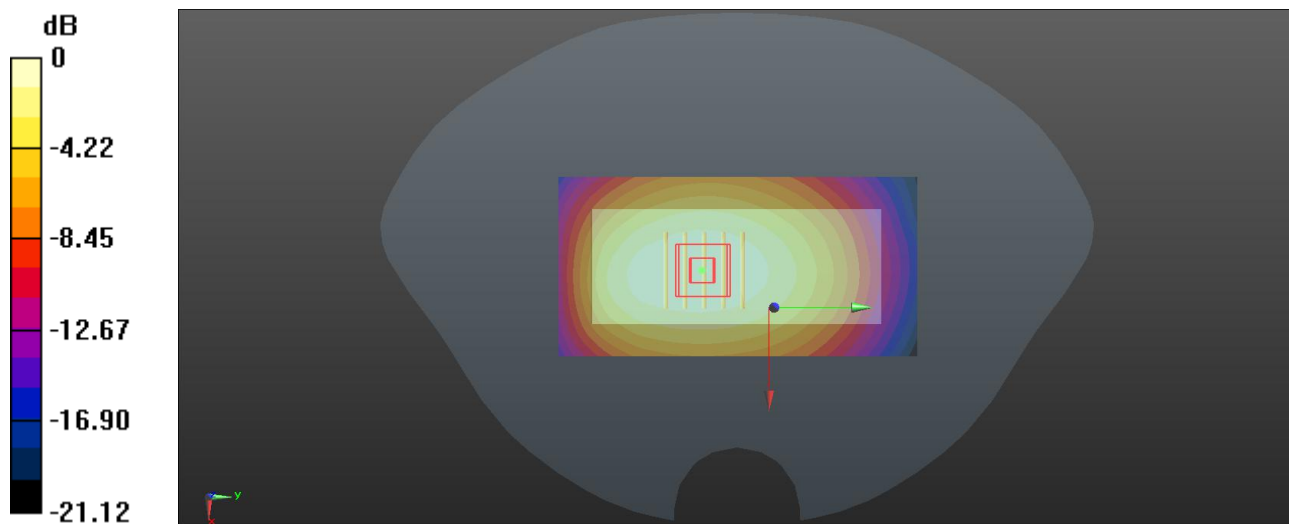
Communication System: LTE\_FDD; Frequency: 829 MHz; Duty Cycle: 1:1  
Medium: HSL835\_0328 Medium parameters used:  $f = 829$  MHz;  $\sigma = 0.929$  S/m;  $\epsilon_r = 43.067$ ;  $\rho = 1000$  kg/m<sup>3</sup>  
Ambient Temperature : 23.5°C; Liquid Temperature : 22.5°C

#### DASY5 Configuration:

- Probe: ES3DV3 - SN3268; ConvF(6.35, 6.35, 6.35) @ 829 MHz; Calibrated: 2022/09/08
- Sensor-Surface: 4mm (Mechanical Surface Detection)
- Electronics: DAE4 Sn1288; Calibrated: 2022/08/29
- Phantom: Right v5.0; Type: QD000P40CD; Serial: TP:1502
- Measurement SW: DASY52, Version 52.10 (2); SEMCAD X Version 14.6.12 (7450)

**-Area Scan (51x101x1):** Interpolated grid: dx=1.500 mm, dy=1.500 mm  
Maximum value of SAR (interpolated) = 0.473 W/kg

**-Zoom Scan (5x5x7)/Cube 0:** Measurement grid: dx=8mm, dy=8mm, dz=5mm  
Reference Value = 21.87 V/m; Power Drift = 0.00 dB  
Peak SAR (extrapolated) = 0.599 W/kg  
**SAR(1 g) = 0.739 W/kg; SAR(10 g) = 0.411 W/kg**  
Maximum value of SAR (measured) = 0.477 W/kg



0 dB = 0.477 W/kg

### P18 LTE 7\_QPSK20M\_Rear Face\_1.5cm\_Ch20850\_1RB\_OS99

Communication System: LTE\_FDD; Frequency: 2510 MHz; Duty Cycle: 1:1

Medium: HSL2600\_0328 Medium parameters used:  $f = 2510$  MHz;  $\sigma = 1.859$  S/m;  $\epsilon_r = 39.096$ ;  $\rho = 1000$  kg/m<sup>3</sup>

Ambient Temperature : 23.5°C; Liquid Temperature : 22.5°C

#### DASY5 Configuration:

- Probe: ES3DV3 - SN3268; ConvF(4.7, 4.7, 4.7) @ 2510 MHz; Calibrated: 2022/09/08
- Sensor-Surface: 4mm (Mechanical Surface Detection)
- Electronics: DAE4 Sn1288; Calibrated: 2022/08/29
- Phantom: Right v5.0; Type: QD000P40CD; Serial: TP:1502
- Measurement SW: DASY52, Version 52.10 (2); SEMCAD X Version 14.6.12 (7450)

**-Area Scan (61x121x1):** Interpolated grid: dx=1.200 mm, dy=1.200 mm

Maximum value of SAR (interpolated) = 0.592 W/kg

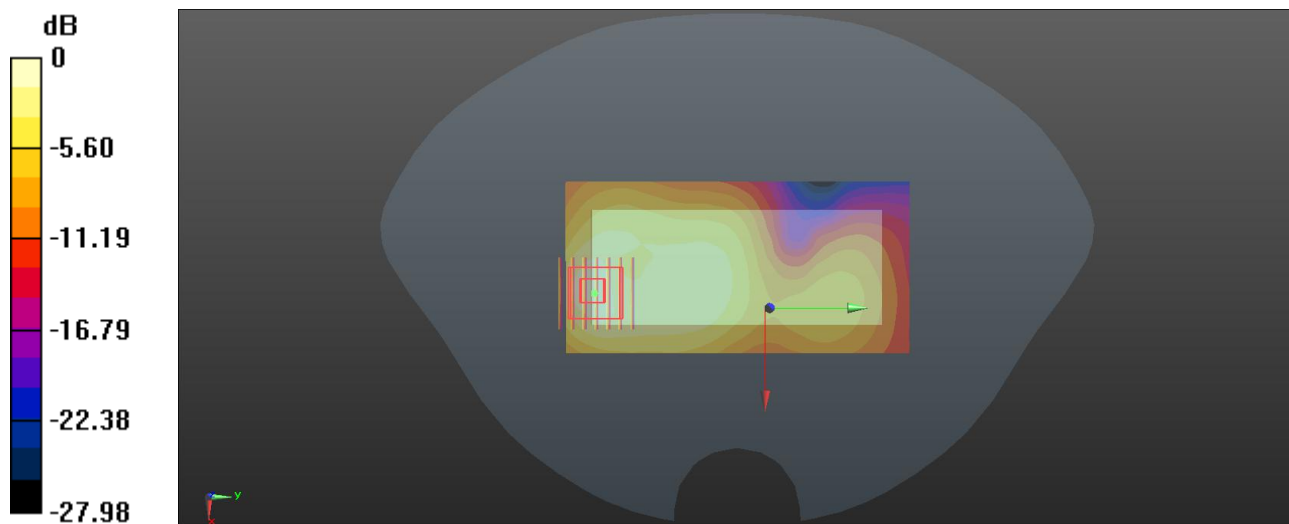
**-Zoom Scan (7x7x7)/Cube 0:** Measurement grid: dx=5mm, dy=5mm, dz=5mm

Reference Value = 11.08 V/m; Power Drift = -0.08 dB

Peak SAR (extrapolated) = 1.08 W/kg

**SAR(1 g) = 0.633 W/kg; SAR(10 g) = 0.279 W/kg**

Maximum value of SAR (measured) = 0.598 W/kg



0 dB = 0.598 W/kg

### P19 LTE 66\_QPSK20M\_Rear Face\_1.5cm\_Ch132572\_1RB\_OS50

Communication System: LTE\_FDD; Frequency: 1770 MHz; Duty Cycle: 1:1

Medium: HSL1750\_0328 Medium parameters used:  $f = 1770$  MHz;  $\sigma = 1.429$  S/m;  $\epsilon_r = 40.753$ ;  $\rho = 1000$  kg/m<sup>3</sup>

Ambient Temperature : 23.5°C; Liquid Temperature : 22.5°C

#### DASY5 Configuration:

- Probe: ES3DV3 - SN3268; ConvF(5.38, 5.38, 5.38) @ 1770 MHz; Calibrated: 2022/09/08
- Sensor-Surface: 4mm (Mechanical Surface Detection)
- Electronics: DAE4 Sn1288; Calibrated: 2022/08/29
- Phantom: Right v5.0; Type: QD000P40CD; Serial: TP:1502
- Measurement SW: DASY52, Version 52.10 (2); SEMCAD X Version 14.6.12 (7450)

**-Area Scan (51x101x1):** Interpolated grid: dx=1.500 mm, dy=1.500 mm

Maximum value of SAR (interpolated) = 0.879 W/kg

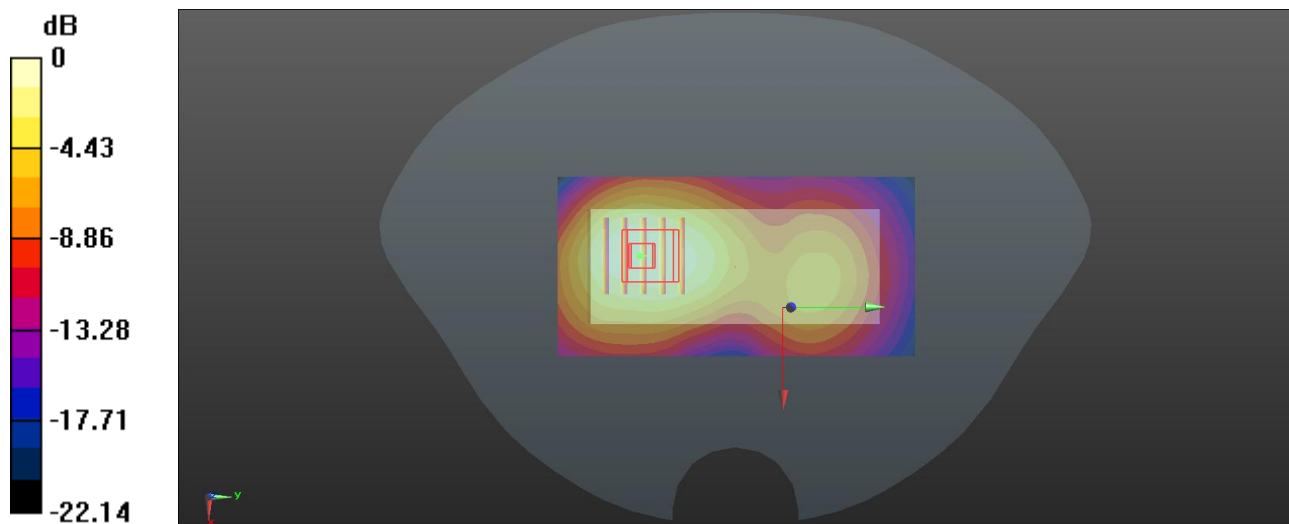
**-Zoom Scan (5x5x7)/Cube 0:** Measurement grid: dx=8mm, dy=8mm, dz=5mm

Reference Value = 14.54 V/m; Power Drift = 0.05 dB

Peak SAR (extrapolated) = 1.26 W/kg

**SAR(1 g) = 1.14 W/kg; SAR(10 g) = 0.623 W/kg**

Maximum value of SAR (measured) = 0.832 W/kg



0 dB = 0.832 W/kg

### P20 BT\_GFSK\_Rear Face\_1.5cm\_Ch0

Communication System: Bluetooth; Frequency: 2402 MHz; Duty Cycle: 1:1.292

Medium: HSL2450\_0328 Medium parameters used:  $f = 2402$  MHz;  $\sigma = 1.778$  S/m;  $\epsilon_r = 39.274$ ;  $\rho = 1000$  kg/m<sup>3</sup>

Ambient Temperature : 23.5°C; Liquid Temperature : 22.5°C

DASY5 Configuration:

- Probe: ES3DV3 - SN3268; ConvF(4.7, 4.7, 4.7) @ 2402 MHz; Calibrated: 2022/09/08
- Sensor-Surface: 4mm (Mechanical Surface Detection)
- Electronics: DAE4 Sn1288; Calibrated: 2022/08/29
- Phantom: Right v5.0; Type: QD000P40CD; Serial: TP:1502
- Measurement SW: DASY52, Version 52.10 (2); SEMCAD X Version 14.6.12 (7450)

**-Area Scan (61x121x1):** Interpolated grid: dx=1.200 mm, dy=1.200 mm

Maximum value of SAR (interpolated) = 0.00754 W/kg

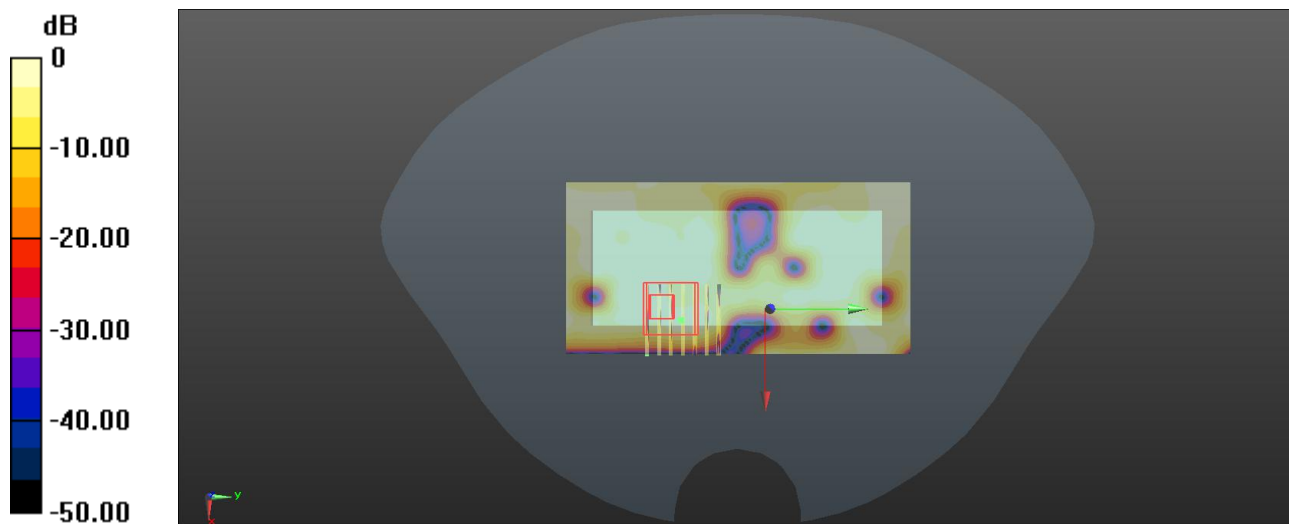
**-Zoom Scan (7x7x7)/Cube 0:** Measurement grid: dx=5mm, dy=5mm, dz=5mm

Reference Value = 0.9000 V/m; Power Drift = 0.06 dB

Peak SAR (extrapolated) = 0.0110 W/kg

**SAR(1 g) = 0.004 W/kg; SAR(10 g) = 0.002 W/kg**

Maximum value of SAR (measured) = 0.005 W/kg



0 dB = 0.005 W/kg

## Appendix C. Calibration Certificate for Probe and Dipole

The SPEAG calibration certificates are shown as follows.

Add: No.52 HuaYuanBei Road, Haidian District, Beijing, 100191, China  
Tel: +86-10-62304633-2117  
E-mail: emf@caict.ac.cn <http://www.caict.ac.cn>

Client : **7layers**

Certificate No: **Z22-60340**

## CALIBRATION CERTIFICATE

Object **DAE4 - SN: 1288**

Calibration Procedure(s) **FF-Z11-002-01**  
**Calibration Procedure for the Data Acquisition Electronics (DAEx)**

Calibration date: **August 29, 2022**

This calibration Certificate documents the traceability to national standards, which realize the physical units of measurements(SI). The measurements and the uncertainties with confidence probability are given on the following pages and are part of the certificate.

All calibrations have been conducted in the closed laboratory facility: environment temperature(22±3)°C and humidity<70%.

Calibration Equipment used (M&TE critical for calibration)

Primary Standards	ID #	Cal Date(Calibrated by, Certificate No.)	Scheduled Calibration
Process Calibrator 753	1971018	14-Jun-22 (CTTL, No.J22X04180)	Jun-23

	Name	Function
Calibrated by:	Yu Zongying	SAR Test Engineer
Reviewed by:	Lin Hao	SAR Test Engineer
Approved by:	Qi Dianyuan	SAR Project Leader

Signature



Issued: September 03, 2022

This calibration certificate shall not be reproduced except in full without written approval of the laboratory.



Add: No.52 HuaYuanBei Road, Haidian District, Beijing, 100191, China  
Tel: +86-10-62304633-2117  
E-mail: emf@caict.ac.cn <http://www.caict.ac.cn>

### Glossary:

DAE data acquisition electronics  
Connector angle information used in DASY system to align probe sensor X to the robot coordinate system.

### Methods Applied and Interpretation of Parameters:

- *DC Voltage Measurement:* Calibration Factor assessed for use in DASY system by comparison with a calibrated instrument traceable to national standards. The figure given corresponds to the full scale range of the voltmeter in the respective range.
- *Connector angle:* The angle of the connector is assessed measuring the angle mechanically by a tool inserted. Uncertainty is not required.
- The report provide only calibration results for DAE, it does not contain other performance test results.



Add: No.52 HuaYuanBei Road, Haidian District, Beijing, 100191, China  
 Tel: +86-10-62304633-2117  
 E-mail: emf@caict.ac.cn <http://www.caict.ac.cn>

### DC Voltage Measurement

A/D - Converter Resolution nominal

High Range: 1LSB = 6.1 $\mu$ V, full range = -100...+300 mV  
 Low Range: 1LSB = 61nV, full range = -1.....+3mV

DASY measurement parameters: Auto Zero Time: 3 sec; Measuring time: 3 sec

Calibration Factors	X	Y	Z
High Range	403.973 $\pm$ 0.15% (k=2)	404.159 $\pm$ 0.15% (k=2)	404.187 $\pm$ 0.15% (k=2)
Low Range	3.97699 $\pm$ 0.7% (k=2)	3.98470 $\pm$ 0.7% (k=2)	3.93235 $\pm$ 0.7% (k=2)

### Connector Angle

Connector Angle to be used in DASY system	107 $^{\circ}$ $\pm$ 1 $^{\circ}$
---	-----------------------------------



Add: No.52 Hua YuanBei Road, Haidian District, Beijing, 100191, China  
Tel: +86-10-62304633-2117  
E-mail: emf@caict.ac.cn http://www.caict.ac.cn

Client **7layers**

Certificate No: **Z22-60339**

## CALIBRATION CERTIFICATE

Object **ES3DV3 - SN : 3268**

Calibration Procedure(s) **FF-Z11-004-02**  
**Calibration Procedures for Dosimetric E-field Probes**

Calibration date: **September 08, 2022**


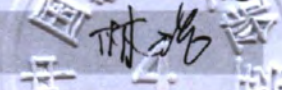

This calibration Certificate documents the traceability to national standards, which realize the physical units of measurements(SI). The measurements and the uncertainties with confidence probability are given on the following pages and are part of the certificate.

All calibrations have been conducted in the closed laboratory facility: environment temperature(22±3)°C and humidity<70%.

Calibration Equipment used (M&TE critical for calibration)

Primary Standards	ID #	Cal Date(Calibrated by, Certificate No.)	Scheduled Calibration
Power Meter NRP2	101919	14-Jun-22(CTTL, No.J22X04181)	Jun-23
Power sensor NRP-Z91	101547	14-Jun-22(CTTL, No.J22X04181)	Jun-23
Power sensor NRP-Z91	101548	14-Jun-22(CTTL, No.J22X04181)	Jun-23
Reference 10dBAttenuator	18N50W-10dB	20-Jan-21(CTTL, No.J21X00486)	Jan-23
Reference 20dBAttenuator	18N50W-20dB	20-Jan-21(CTTL, No.J21X00485)	Jan-23
Reference Probe EX3DV4	SN 3846	20-May-22(SPEAG, No.EX3-3846_May22)	May-23
DAE4	SN 771	20-Jan-22(SPEAG, No.DAE4-771_Jan22)	Jan-23

Secondary Standards	ID #	Cal Date(Calibrated by, Certificate No.)	Scheduled Calibration
SignalGenerator MG3700A	6201052605	14-Jun-22(CTTL, No.J22X04182)	Jun-23
Network Analyzer E5071C	MY46110673	14-Jan-22(CTTL, No.J22X00406)	Jan-23

	Name	Function	Signature
Calibrated by:	Yu Zongying	SAR Test Engineer	
Reviewed by:	Lin Hao	SAR Test Engineer	
Approved by:	Qi Dianyuan	SAR Project Leader	

Issued: September 13, 2022

This calibration certificate shall not be reproduced except in full without written approval of the laboratory.



Add: No.52 HuaYuanBei Road, Haidian District, Beijing, 100191, China  
Tel: +86-10-62304633-2117  
E-mail: emf@caict.ac.cn <http://www.caict.ac.cn>

**Glossary:**

TSL	tissue simulating liquid
NORM <sub>x,y,z</sub>	sensitivity in free space
ConvF	sensitivity in TSL / NORM <sub>x,y,z</sub>
DCP	diode compression point
CF	crest factor (1/duty_cycle) of the RF signal
A,B,C,D	modulation dependent linearization parameters
Polarization $\Phi$	$\Phi$ rotation around probe axis
Polarization $\theta$	$\theta$ rotation around an axis that is in the plane normal to probe axis (at measurement center), $\theta=0$ is normal to probe axis
Connector Angle	information used in DASY system to align probe sensor X to the robot coordinate system

**Calibration is Performed According to the Following Standards:**

- a) IEEE Std 1528-2013, "IEEE Recommended Practice for Determining the Peak Spatial-Averaged Specific Absorption Rate (SAR) in the Human Head from Wireless Communications Devices: Measurement Techniques", June 2013
- b) IEC 62209-1, "Measurement procedure for the assessment of Specific Absorption Rate (SAR) from hand-held and body-mounted devices used next to the ear (frequency range of 300 MHz to 6 GHz)", July 2016
- c) IEC 62209-2, "Procedure to determine the Specific Absorption Rate (SAR) for wireless communication devices used in close proximity to the human body (frequency range of 30 MHz to 6 GHz)", March 2010
- d) KDB 865664, "SAR Measurement Requirements for 100 MHz to 6 GHz"

**Methods Applied and Interpretation of Parameters:**

- **NORM<sub>x,y,z</sub>:** Assessed for E-field polarization  $\theta=0$  ( $f \leq 900\text{MHz}$  in TEM-cell;  $f > 1800\text{MHz}$ : waveguide). NORM<sub>x,y,z</sub> are only intermediate values, i.e., the uncertainties of NORM<sub>x,y,z</sub> does not effect the  $E^2$ -field uncertainty inside TSL (see below ConvF).
- **NORM(f)<sub>x,y,z</sub> = NORM<sub>x,y,z</sub> \* frequency\_response** (see Frequency Response Chart). This linearization is implemented in DASY4 software versions later than 4.2. The uncertainty of the frequency response is included in the stated uncertainty of ConvF.
- **DCP<sub>x,y,z</sub>:** DCP are numerical linearization parameters assessed based on the data of power sweep (no uncertainty required). DCP does not depend on frequency nor media.
- **PAR:** PAR is the Peak to Average Ratio that is not calibrated but determined based on the signal characteristics.
- **A<sub>x,y,z</sub>; B<sub>x,y,z</sub>; C<sub>x,y,z</sub>; VR<sub>x,y,z</sub>:** A,B,C are numerical linearization parameters assessed based on the data of power sweep for specific modulation signal. The parameters do not depend on frequency nor media. VR is the maximum calibration range expressed in RMS voltage across the diode.
- **ConvF and Boundary Effect Parameters:** Assessed in flat phantom using E-field (or Temperature Transfer Standard for  $f \leq 800\text{MHz}$ ) and inside waveguide using analytical field distributions based on power measurements for  $f > 800\text{MHz}$ . The same setups are used for assessment of the parameters applied for boundary compensation (alpha, depth) of which typical uncertainty valued are given. These parameters are used in DASY4 software to improve probe accuracy close to the boundary. The sensitivity in TSL corresponds to NORM<sub>x,y,z</sub> \* ConvF whereby the uncertainty corresponds to that given for ConvF. A frequency dependent ConvF is used in DASY version 4.4 and higher which allows extending the validity from  $\pm 50\text{MHz}$  to  $\pm 100\text{MHz}$ .
- **Spherical isotropy (3D deviation from isotropy):** in a field of low gradients realized using a flat phantom exposed by a patch antenna.
- **Sensor Offset:** The sensor offset corresponds to the offset of virtual measurement center from the probe tip (on probe axis). No tolerance required.
- **Connector Angle:** The angle is assessed using the information gained by determining the NORM<sub>x</sub> (no uncertainty required).

Add: No.52 HuaYuanBei Road, Haidian District, Beijing, 100191, China  
Tel: +86-10-62304633-2117  
E-mail: emf@caict.ac.cn <http://www.caict.ac.cn>

## DASY/EASY – Parameters of Probe: ES3DV3 – SN: 3268

### Basic Calibration Parameters

	Sensor X	Sensor Y	Sensor Z	Unc (k=2)
Norm( $\mu\text{V}/(\text{V}/\text{m})^2$ ) <sup>A</sup>	1.14	1.22	1.22	±10.0%
DCP(mV) <sup>B</sup>	105.0	105.5	104.6	

### Calibration Results for Modulation Response

UID	Communication System Name		A dB	B dB/ $\mu\text{V}$	C	D dB	VR mV	Max Dev.	Max Unc <sup>E</sup> (k=2)
0	CW	X	0.0	0.0	1.0	0.00	247.8	±2.1%	±4.7%
		Y	0.0	0.0	1.0		266.8		
		Z	0.0	0.0	1.0		257.3		
10352-AAA	Pulse Waveform (200Hz, 10%)	X	11.39	83.87	22.06	10.00	60	±3.4%	±9.6%
		Y	14.02	87.15	23.18		60		
		Z	10.23	79.09	21.02		60		
10353-AAA	Pulse Waveform (200Hz, 20%)	X	19.11	92.25	23.23	6.99	80	±1.9%	±9.6%
		Y	20.00	92.67	23.30		80		
		Z	12.38	83.30	21.04		80		
10354-AAA	Pulse Waveform (200Hz, 40%)	X	20.00	93.16	21.58	3.98	95	±3.7%	±9.6%
		Y	20.00	93.46	21.76		95		
		Z	16.08	88.53	20.96		95		
10355-AAA	Pulse Waveform (200Hz, 60%)	X	20.00	94.18	20.42	2.22	120	±4.0%	±9.6%
		Y	20.00	94.93	20.83		120		
		Z	20.00	92.71	20.75		120		
10387-AAA	QPSK Waveform, 1 MHz	X	1.79	65.74	14.66	1.00	150	±1.9%	±9.6%
		Y	1.81	66.01	14.85		150		
		Z	1.92	65.96	15.16		150		
10388-AAA	QPSK Waveform, 10 MHz	X	2.35	68.13	15.21	0.00	150	±1.2%	±9.6%
		Y	2.39	68.45	15.44		150		
		Z	2.50	68.77	15.58		150		
10396-AAA	64-QAM Waveform, 100 kHz	X	3.93	74.76	21.10	3.01	150	±0.5%	±9.6%
		Y	3.99	75.21	21.35		150		
		Z	4.21	74.53	21.01		150		
10414-AAA	WLAN CCDF, 64-QAM, 40MHz	X	4.97	65.66	15.33	0.00	150	±3.3%	±9.6%
		Y	4.97	65.70	15.35		150		
		Z	5.08	65.62	15.35		150		

Note: For details on UID parameters see Appendix

The reported uncertainty of measurement is stated as the standard uncertainty of Measurement multiplied by the coverage factor  $k=2$ , which for a normal distribution Corresponds to a coverage probability of approximately 95%.

<sup>A</sup> The uncertainties of Norm X, Y, Z do not affect the E<sup>2</sup>-field uncertainty inside TSL (see Page 5).

<sup>B</sup> Numerical linearization parameter: uncertainty not required.

<sup>E</sup> Uncertainty is determined using the max. deviation from linear response applying rectangular distribution and is expressed for the square of the field value.



Add: No.52 HuaYuanBei Road, Haidian District, Beijing, 100191, China  
Tel: +86-10-62304633-2117  
E-mail: emf@caict.ac.cn <http://www.caict.ac.cn>

## DASY/EASY – Parameters of Probe: ES3DV3 – SN: 3268

### Sensor Model Parameters

	C1 fF	C2 fF	$\alpha$ V <sup>-1</sup>	T1 ms.V <sup>-2</sup>	T2 ms.V <sup>-1</sup>	T3 ms	T4 V <sup>-2</sup>	T5 V <sup>-1</sup>	T6
X	61.80	439.32	34.52	29.63	0.26	5.10	0.65	0.45	1.02
Y	60.83	430.07	34.23	29.34	0.26	5.10	0.72	0.43	1.02
Z	77.59	555.96	35.07	55.20	0.43	5.10	0.00	0.71	1.02

### Other Probe Parameters

Sensor Arrangement	Triangular
Connector Angle (°)	34.8
Mechanical Surface Detection Mode	enabled
Optical Surface Detection Mode	disable
Probe Overall Length	337mm
Probe Body Diameter	10mm
Tip Length	10mm
Tip Diameter	4mm
Probe Tip to Sensor X Calibration Point	2mm
Probe Tip to Sensor Y Calibration Point	2mm
Probe Tip to Sensor Z Calibration Point	2mm
Recommended Measurement Distance from Surface	3mm