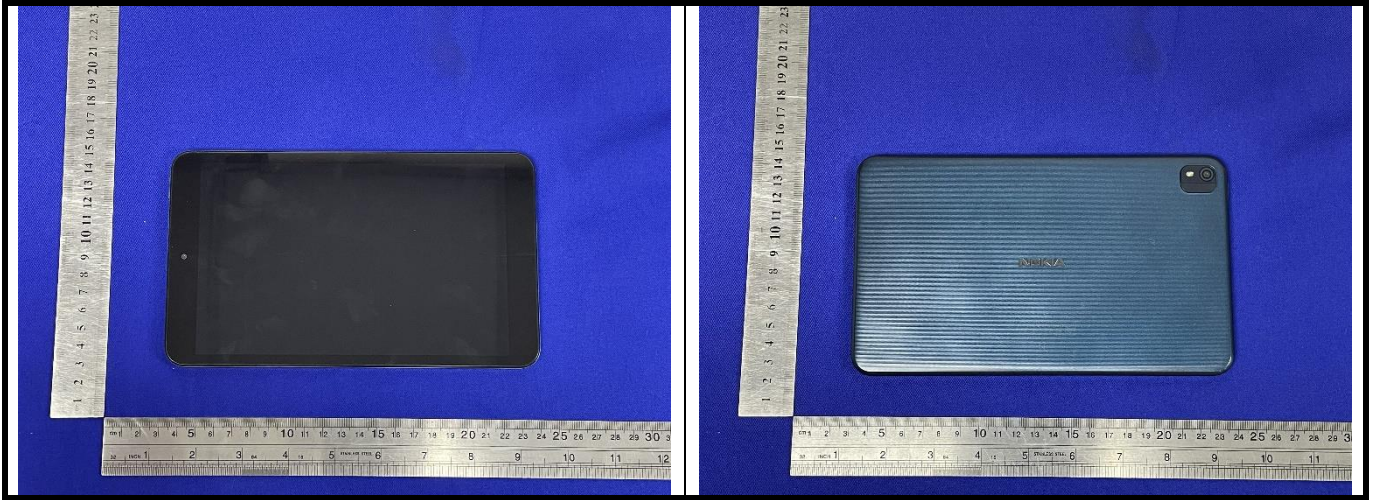
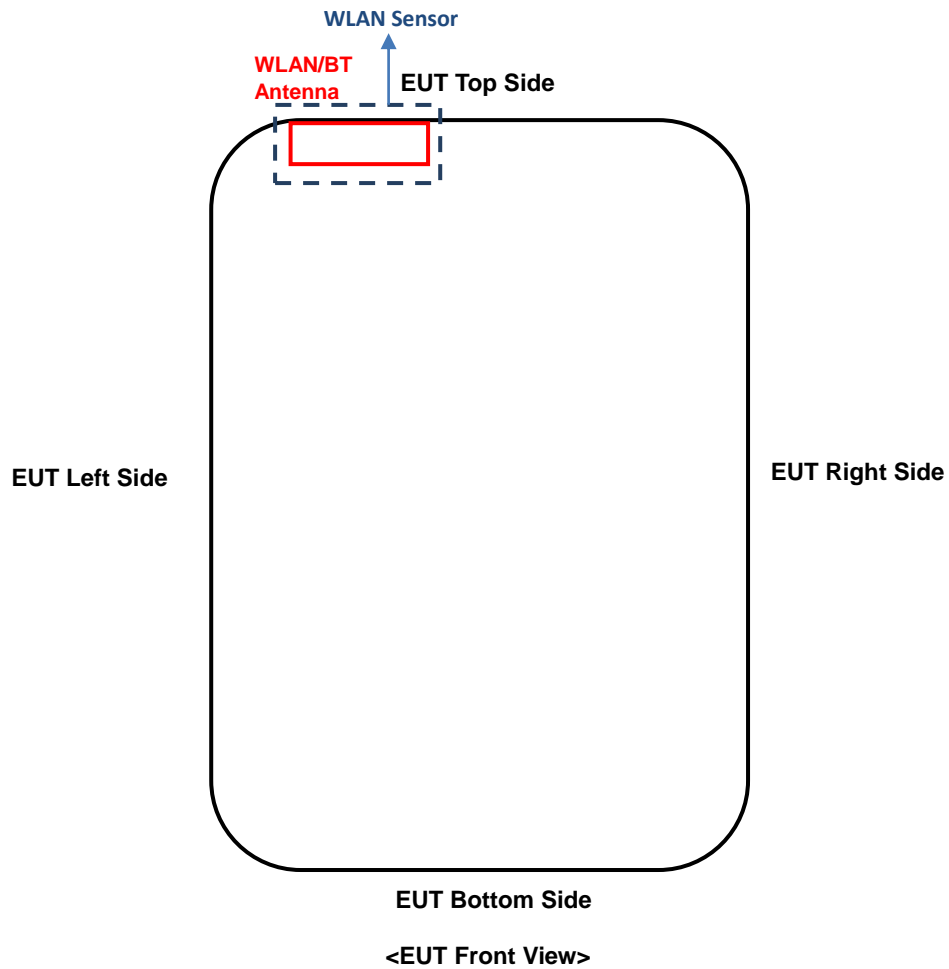


<Photographs of EUT>



<Antenna Location>



The separation distance for antenna to edge:

Antenna	Overall diagonal(mm)	Display Diagonal(mm)	To Left Side (mm)	To Right Side (mm)	To Top Side (mm)	To Bottom Side (mm)
WLAN/BT Antenna	232	202	16	60	0	191

<Photographs of SAR Setup>



Rear Face of EUT with 0 cm Gap



Rear Face of EUT with 1.3 cm Gap



Left Side of EUT with 0 cm Gap



Left Side of EUT with 0.7 cm Gap



Top Side of EUT with 0 cm Gap



Top Side of EUT with 1.5 cm Gap