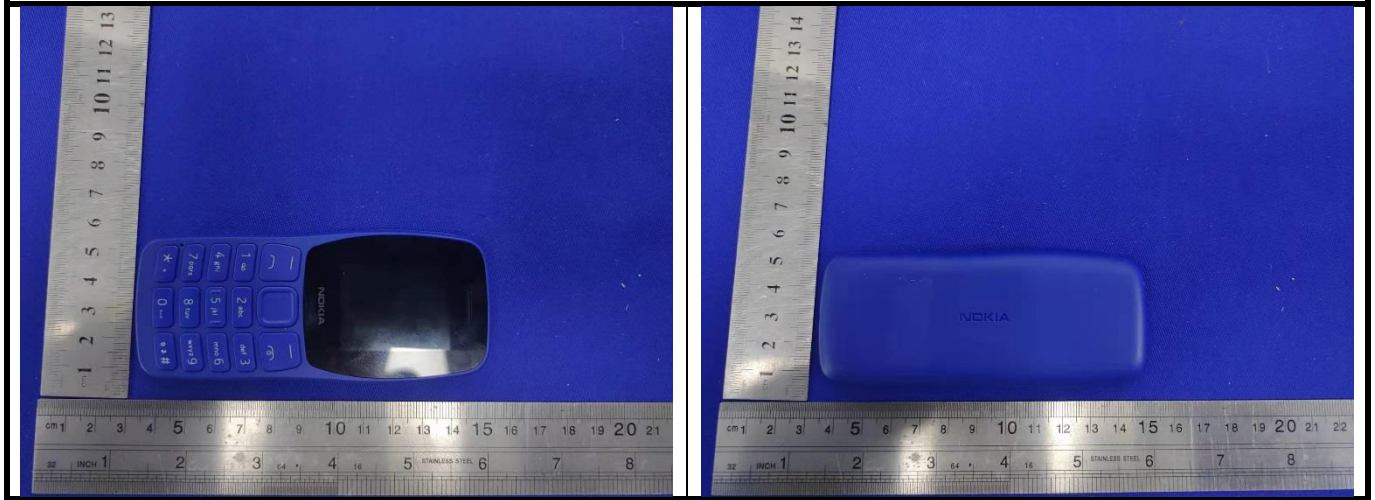
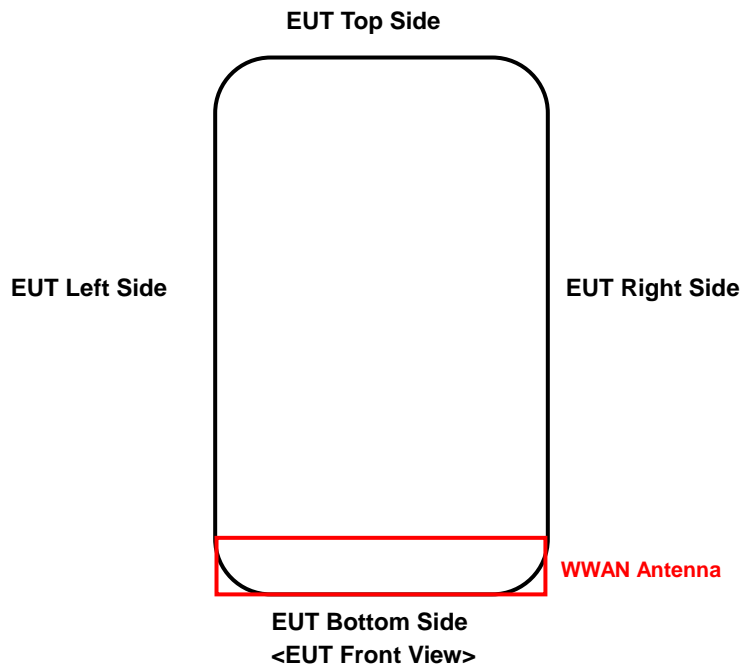


<Photographs of EUT>



<Antenna Location>

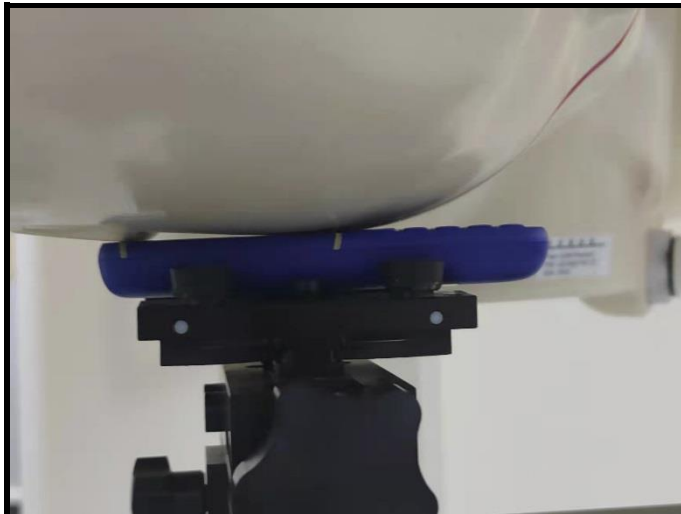


The separation distance for antenna to edge:

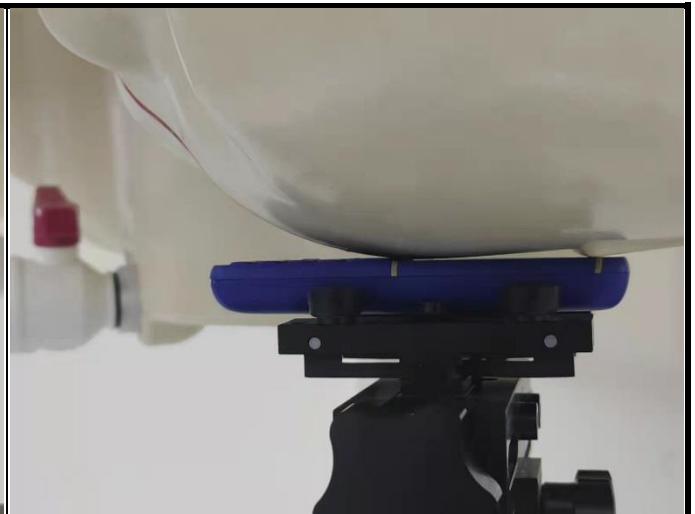
Antenna	Overall diagonal(mm)	Display diagonal(mm)	To Left Side (mm)	To Right Side (mm)	To Top Side (mm)	To Bottom Side (mm)
WWAN	116	45	0	0	84	0

# FCC SAR Test Report

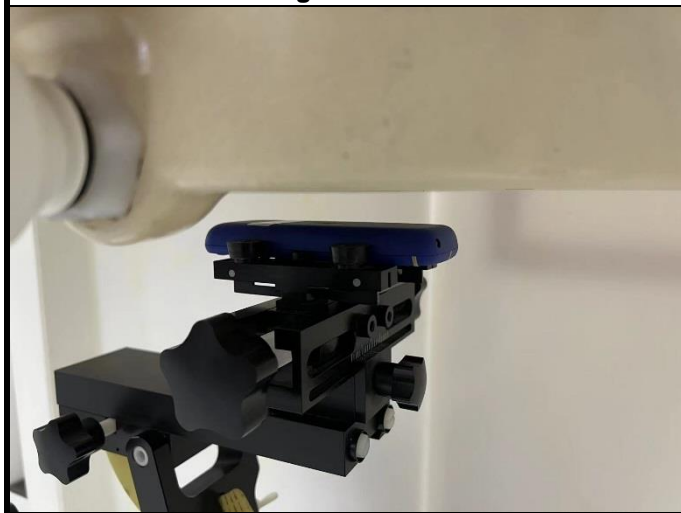
## <Photographs of SAR Setup>



Right Cheek



Left Cheek



Rear Face of EUT with 1.5 cm Gap