

Foxconn International Holdings Ltd.

No.4, Mingsheng St., Tu-Cheng Dist.,New Taipei City 23679, Taiwan

Date: February 25, 2022

Product Equality Declaration

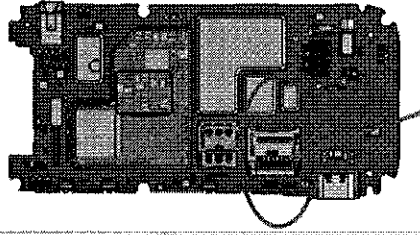
We, Foxconn International Holdings Ltd., declare on our sole responsibility for the product of N139DL as below:

N139DL FCCID: (2AJOTTA-1398) and N139DL FCCID: (2AJOTTA-1451) are same performance from certification point of view.to implement 2nd IC for WLAN and BT

	N139DL	N139DL
RF bands	GSM Bands	850, 900, 1800, 1900
	UMTS Bands	II, IV, V
	LTE Bands	LTE FDD: B2,B4,B5,B7,B12,B13,B17, B66,B71. LTE TDD : B41(HPUE)
Memory (eMMC+ DDR3,4GB+4Gb)	BIWEN: BWCE24NL-04G	Kingston:04EM04-N3GM627-GB01

- HW change from FCCID 2AJOTTA-1398 to FCCID 2AJOTTA-1451 :
 - FM& SD card connector removed
 - WIFI & BT schematic design change, details refer to schematic of FCCID 2AJOTTA-1451. Page 35 change, and new add page 39.
 - WIFI & BT layout design change overview picture as below, HW0301 for FCCID 2AJOTTA-1398, HW0303 for FCCID 2AJOTTA-1451.

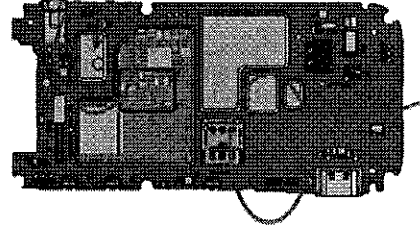
HW0201 PWB



SD conn



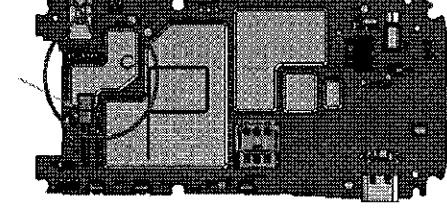
HW0301 PWB



Wifi shielded



HW0303 PWB



Enlarge wifi shielding

Add new BT antenna feedpoint

- o BT and WIFI solution change, so key components change as below table.

Change Component Reference No.	Before change (HW0301)		After Change(HW0303)		Comments
	Description	CMCS Code	Component Reference No.	Description	
X2000	CONN_Memory Socket_8PIN_14.5*13.5*1.6mm_HRD	MERET4B005A	X2000	NA	NA
R2001	RES_OQ_0201_Jumper_1/20W_WR02X000PAL	SR0000002X3	R2001	NA	NA
C2001	CER CAP_2.2uF_X5R_0402_10V_±20%_TAIYO	SC222G045B1	C2001	NA	NA
C2000	CER CAP_100nF_X5R_0201_6.3V_±10%_WALSIN	SC210H024A1	C2000	NA	NA
BT antenna	ANT_CWS_35.49*20.55*0.12_T01_Black	S0AF2ACCOA9	BT antenna	ANT_BT_23.41*15.4*0.12_T02_Black	S0AF2ACCOAA
WIFI & BT Shielding can	Shielding_Can_Wifi_WND	MEWND23003A	WIFI & BT Shielding can	Shielding_Can_Wifi_WND	MEWND23008
U7000	IC_Wireless Connectivity_1.8V_47P WLNSP	SA0361500A0	U3900	IC_WLAN single-chip_1.8V_4.1*3.84*0.6_73P_WLC SP	SA0ACC13130
					Seperated BT antenna from CWS antenna Shielding can change WIFI chip change

NA	NA	NA	U3902	Balun_Multilayer_2400-2500MHz_1.0*0.5*0.4	S09HHM19000	Balun new add
NA	NA	U3901	U3901	IC_SP4T_2.8V_1.1*1.5*0.38_10P_QFN	SA08545A080	SP4T new add
NA	NA	U6800	U6800	IC_BR8051A01_3.3V_5*5*0.75_32P_QFN	SA0BR805080	BT Chip change
NA	NA	Q6800	Q6800	DIODE_Switching_1.7*1.75*0.9	SD1M40020A0	For BT ESD
NA	NA	X6803	X6803	XTAL_24M_9pF_±10ppm_2.5*2*0.65_HOSONIC	SX0024M002X	Add 24M crystal for BT
NA	NA	Z6308	Z6308	SAW_2155MHz_1.1*0.9*0.5mm_5P	SF1XA4020A0	Add SAW for BT
NA	NA	X6809	X6809	Spring_Housing_ALS_NB1	MENB122006A	Add Spring for BT
NA	NA	X6802	X6802	CONN_RF_4P_2.0*2.0*0.9	SN011998040	Add RF connector for BT
HW0301 PCB	PCB_MB_RA_8L_0.8mm_3 to 1_Wuzhu	SB0WND1B WOA	HW0303 PCB	PCB_MB_RA_8L_0.8mm_3 to 1_Wuzhu	SB0WND4B WOA	PCB change

- N139DL FCCID: (2AJOTTA-1398) and N139DL FCCID: (2AJOTTA-1451) SW difference:
 - Tracfone unique UI/UX settings and values
 - No Change of RF/audio parameters
 - No change/Affection of charging/battery part including the following items of CTIA Certification for Battery System Compliance to IEEE 1725.
 - The temperature protective point of charging and discharging for the battery(5.15);
 - The temperature rise of host when normal working(5.8);
 - Damage of conducted transient voltages on the the host device's charge control circuitry or the battery pack's safety circuitry (6.2);
 - Performance of system level charge over current or over voltage protection during a worst case single fault condition as identified in section 6.6 (6.7);
 - Charge algorithm(6.11);
 - Integrity of communication interface (6.13);
 - Charge time period (6.12);

Should you have any questions or comments regarding this matter, please have my best attention.



Contact Person: Roman Jiang

Position/Title: Product Program Manager

Applicant: Foxconn International Holdings Ltd.

E-Mail: roman.hy.jiang@fih-foxconn.com