

## Declaration of Difference



To whom it may concern,

We, **HMD Global Oy**, declare on our sole responsibility for the product of TA-1425 and TA-1444 with following changes as below:

Version	SKU	Model Name	Sim Card Support	SW Version	HW Version	Band	Battery capacity	STORAGE
	SKU1.2	TA-1425	Dual Sim	000T_0_050	19661_1_12	GSM 850, 900, 1800, 1900 WCDMA 1, 2, 4, 5, 8	3920 mAh (WT410)	2+64GB,
		TA-1444	Single Sim	000T_0_050	19661_1_12	LTE 1, 2, 3, 4, 5, 7, 8, 12/17, 13, 28, 66 with BT/Wifi (2.4G)	<b>Fenghua</b>	3+32GB

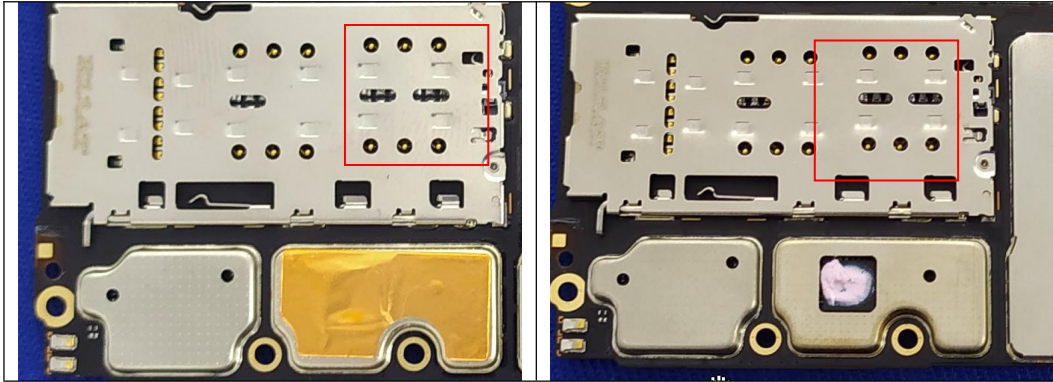
➤ Main components changes:

TA-1425 is a dual card version, TA-1444 is a single card version, RF and PCB design are the same.

Dual Sim	Sigel SIM	Note
		The material is the same, but the SIM2 position of the single card cato is sealed with plastic.

# HMD Global Oy

Bertel Jungin aukio 9, 02600 Espoo, Finland



The PCB design of SIM2 remains, and the single-card version is implemented through physical card holders.

If you have any question regarding this declaration, please don't hesitate to contact us. Thank you!

Best Regards,

**Reza Serafat / GM, Global Quality & Customer Compliance and Operations**  
**HMD Global Oy**

Tel: [REDACTED]  
E-mail: [reza.serafat@hmdglobal.com](mailto:reza.serafat@hmdglobal.com)

