

Quick guide

Nokia xx Flip

For your safety

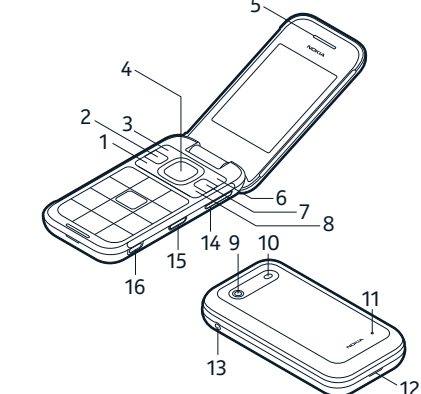
Read these simple guidelines. Not following them may be dangerous or against local laws and regulations. For further information, read the complete user guide.

- SWITCH OFF IN RESTRICTED AREAS**
Switch the device off when mobile phone use is not allowed or when it may cause interference or danger, for example, in aircraft, in hospitals or near medical equipment, fuel, chemicals, or blasting areas. Obey all instructions in restricted areas.
- ROAD SAFETY COMES FIRST**
Obey all local laws. Always keep your hands free to operate the vehicle when driving. Your first consideration while driving should be road safety.
- INTERFERENCE**
All wireless devices may be susceptible to interference, which could affect performance.
- AUTHORIZED SERVICE**
Only authorized personnel may install or repair this product.
- BATTERIES, CHARGERS AND OTHER ACCESSORIES**
Use only batteries, chargers, and other accessories approved by HMD Global for use with this device. Do not connect incompatible products.
- KEEP YOUR DEVICE DRY**
Your device is not water-resistant. Keep it dry.
- PROTECT YOUR HEARING**
To prevent possible hearing damage, do not listen at high volume levels for long periods. Exercise caution when holding your device near your ear while the loudspeaker is in use.

SAR
This device meets RF exposure guidelines when used either in the normal use position against the ear or when positioned at least 5 mm (0.2 inches) away from the body. The specific maximum SAR values can be found in the Certification Information (SAR) section of this user guide. For more info, go to www.sar-tick.com.
When a carry case, belt clip or other form of device holder is used for body-worn operation, it should not contain metal and should provide at least the above-stated separation distance from the body. Note that mobile devices may be transmitting even if you are not making a voice call.

SAFETY AND TEXTING WHILE DRIVING
Safety should be every driver's first priority. Drivers must obey all local laws that may include restrictions on the use of mobile phones or accessories while driving. If use is legal, always keep your hands free to operate the vehicle while driving and use a handsfree device whenever possible. Suspend calls in heavy traffic or hazardous weather. Get to know your mobile phone and its features and make any necessary information inputs prior to driving. Do not input data or engage in text messaging while driving. Mobile phones should not be used when use may be a distraction to the driver.

Keys and parts



1. Call key
2. Shortcut key
3. Left selection key
4. Center key
5. Earpiece
6. Right selection key
7. Back key
8. Power/ End key
9. Camera
10. Flash
11. Microphone
12. Back cover opening slot
13. Headset connector
14. Volume keys

Add your ICE details

To be able to make SOS calls, you need to add your ICE (In Case of Emergency) details.
To add your personal details, press the scroll key, and select **Settings > Device > ICE information**. To define the contacts to whom the SOS call is made, press the scroll key, and select **Settings > Device > ICE information > Options > Create ICE contacts**. Note that you cannot use official emergency call numbers as your ICE contacts.

Make an SOS call

Once you have the accessibility mode switched on and added an ICE contact, you can make SOS calls.
To make the call, press and hold the SOS call key for three seconds, or press the SOS call key quickly twice. The phone calls your first ICE contact. If the contact doesn't answer in 25 seconds, the phone calls the next contact, and keeps calling your contacts 10 times until one of them answers the call, or you press **⏏**.
Note: When the SOS call is answered, the phone goes to handsfree mode. Do not hold the phone close to your ear, as the volume will be very loud.
Tip: If you want to keep the accessibility mode on, but don't want to make SOS calls, press the scroll key, and select **Settings > Device > Accessibility Mode > SOS Call > Off**.

Camera

1. To switch the camera on, press the scroll key, and select **Camera**.
 2. To take a photo, press the scroll key.
- Keep a safe distance when using the flash. Do not use the flash on people or animals at close range. Do not cover the flash while taking a photo.

Find your model number and serial number (IMEI)

If you need to contact your care point or your service provider, you may need info such as the model number and the serial number (IMEI). To see the model number, dial ***#0000#**. To see the serial number, dial ***#06#**. If you have a dual SIM phone, only IMEI1 is needed. You can also find the info on your phone label, which is located under the battery. The IMEI is also visible on the original sales box.

Product and safety info

For info on HMD Global Privacy Policy, go to www.nokia.com/phones/privacy. For the online user guide, even more info, and troubleshooting help, go to www.nokia.com/mobile-support.
Note: Pre-installed system software and apps use a significant part of memory space.

Network services and costs

You can use your device on the GSM 850, 900, 1800, 1900; WCDMA 2, 4, 5; LTE 2, 4, 5, 7, 12, 13, 17, 25, 26, 41, 66, 71 networks. You need a subscription with a service provider.
Note: Pre-installed system software and apps use a significant part of memory space. Using some features and services, or downloading content, including free items, require a network connection. This may cause the transfer of large amounts of data, which may result in data costs. You may also need to subscribe to some features.

Emergency calls

Important: Conditions in all conditions cannot be guaranteed. Never rely solely on any wireless phone for essential communications like medical emergencies.
Before making the call:
• Switch the phone on.
• If the phone keys are locked, unlock them.
• Move to a place with adequate signal strength.
• Press the end key repeatedly, until the home screen is shown.
2. Type in the official emergency number for your present location. Emergency call numbers vary by location.
3. Press the call key.
4. Give the necessary info as accurately as possible. Do not end the call until you give permission to do so.
You may also need to dial the following:

HAC notice:

Your phone is compliant with the FCC Hearing Aid Compatibility requirements.

The FCC has adopted HAC rules for digital wireless phones. These rules require certain phones to be tested and rated under the American National Standards Institute (ANSI) C63.19-2011 hearing aid compatibility standards. The ANSI standard for hearing aid compatibility contains two types of ratings:

- M-Ratings: Rating for less radio frequency interference to enable hearing aids to be used with mobile phones.
- T-Ratings: Rating for inductive coupling with hearing aids in telecoil mode.

Not all phones have been rated. A phone is considered hearing aid compatible under the FCC rules if it is rated M3 or M4 for acoustic coupling and T3 or T4 for inductive coupling. These ratings are given on a scale from one to four, where four is the most compatible. Your phone meets the M4/T4 level rating.
However, hearing aid compatibility ratings don't guarantee that interference to your hearing aids won't happen. Results will vary, depending on the level of immunity of your hearing device and the degree of your hearing loss. If your hearing device happens to be vulnerable to interference, you may not be able to use a rated phone successfully. Try out the phone with your hearing device in the best way to evaluate it for your personal needs.

This phone has been tested and rated for use with hearing aids for some of the wireless technologies that it uses. However, there may be some newer wireless technologies used in this phone that have not been tested yet for use with hearing aids. It is important to try the different features of this phone thoroughly and in different locations, using your hearing aid or cochlear implant, to determine if you hear any interfering noise. Consult your service provider or the manufacturer of this phone for information on hearing aid compatibility. If you have any questions about return or exchange policies, consult your service provider or phone retailer.

Hearing devices may also be tested. Your hearing device manufacturer or hearing health professional may help you find this rating. For more information about the Hearing Aid Compatibility, please go to <http://www.fcc.gov/cgb/dse>.
Manufacturer and/or importer in EU: HMD Global Oy, Bertel Jungin aukio 9, 02620 Espoo, Finland.
HMD Global Privacy Policy, available at <http://www.nokia.com/phones/privacy>, applies to your use of the device.

15. SOS call key
 16. USB connector
- To lock the keys, press and hold the ***** key, or close the fold.

To unlock the keys, select **Unlock**.

Do not connect to products that create an output signal, as this may damage the device. Do not connect any voltage source to the audio connector. If you connect an external device or headset, other than those approved for use with this device, to the audio connector, pay special attention to volume levels.

Parts of the device are magnetic. Metallic materials may be attracted to the device. Do not place credit cards or other magnetic stripe cards near the device for extended periods of time, since the cards may be damaged.

Some of the accessories mentioned in this user guide, such as charger, headset, or data cable, may be sold separately.

Note: You can set the phone to ask for a security code. Press the scroll key and select **Settings**. Scroll right to **Privacy & Security**, and select **Screen Lock > Screen lock > On**, and create a four-digit code. Note, however, that when you change the code, you need to remember the new code, as HMD Global is not able to open or bypass it.

Insert the SIM and memory card

Use only original nano-SIM cards. Use of incompatible SIM cards may damage the card or the device, and may corrupt data stored on the card.



Use only compatible memory cards approved for use with this device. Incompatible cards may damage the card and the device and corrupt data stored on the card.

- If your phone asks for a PIN code, type in the official emergency number for your present location, and press the call key.
- Switch the call restrictions off in your phone, such as call barring, fixed dialling, or closed user group.

Take care of your device

- Handle your device, battery, charger and accessories with care. The following suggestions help you keep your device operational.
 - Keep the device dry. Precipitation, humidity, and all types of liquids or moisture can contain minerals that corrode electronic circuits. If your device gets wet, remove the battery, and let the device dry.
 - Do not use or store the device in dusty or dirty areas.
 - Do not store the device in high temperatures. High temperatures may damage the device or battery.
 - Do not store the device in cold temperatures. When the device warms to its normal temperature, moisture can form inside the device and damage it.
 - Do not open the device other than as instructed in the user guide.
 - Unauthorized modifications may damage the device and violate regulations governing radio devices.
 - Do not drop, knock, or shake the device or the battery. Rough handling can break it.
 - Only use a soft, clean, dry cloth to clean the surface of the device.
 - Do not paint the device. Paint can prevent proper operation.
 - For optimal performance, switch the device off and remove the battery from time to time.
 - Keep the device away from magnets or magnetic fields.
 - To keep your important data safe, store it in at least two separate places, such as your device, memory card, or computer, or write down important info.

Restore original settings

To reset your phone to its original settings and to remove all your data, select **Settings > Device > Device information > Reset phone**.

Recycle



Always return your used electronic products, batteries, and packaging materials to dedicated collection points. This way you help prevent uncontrolled waste disposal and promote the recycling of materials. Electrical and electronic products contain a lot of valuable materials, including metals (such as copper, aluminum, steel, and magnesium) and precious metals (such as gold, silver, and palladium). All materials of the device can be recovered as materials and energy.

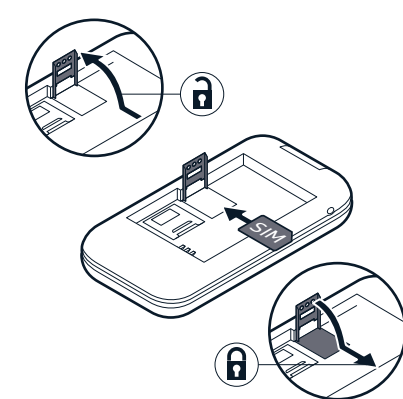
Note: Switch the device off and disconnect the charger and any other device before removing any covers. Always store and use the device with any covers attached.

1. Put your fingernail in the small slot at the bottom of the phone, lift and remove the cover.



2. If the battery is in the phone, to remove it, lift it out.

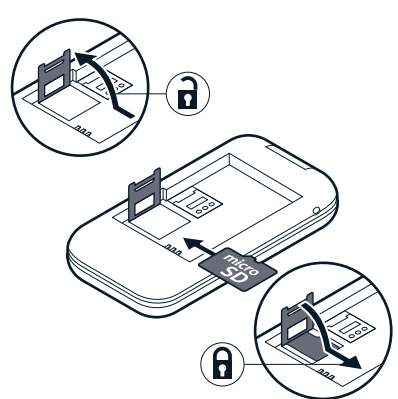
3. Slide the SIM card holder to the left and open it up. Place the nano-SIM in the slot face down, close down the holder and slide it to the right to lock it in place.



TA-1420

EN-US

4. Slide the memory card holder to the left and open it up. Place the memory card in the slot face down, close down the holder and slide it to the right to lock it in place.



5. Put back the battery.
6. Put back the cover.

Important: Do not remove the memory card when an app is using it. Doing so may damage the memory card and the device and corrupt data stored on the card.

Switch your phone on or off

Press and hold the power key.

Charge the battery

1. Plug the charger into the wall outlet.

www.fda.gov/Radiation-emittingProducts/RadiationEmittingProductsandProcedures/HomeBusinessandEntertainment/CellPhones/default.htm and the FCC website at www.fcc.gov/engineering-technology/electromagnetic-compatibility-division/radio-frequency-safety/fair/fair-safety. Additional health-related information is available from the World Health Organization (WHO) at www.who.int/mediacentre/factsheets/fs193/en/ and from The National Cancer Institute (NCI) at www.cancer.gov/about-cancer/causes-prevention/risk/radiation/cell-phones-fact-sheet. In the event that you are concerned about possible health effects, the FDA suggests that you limit your own or your children's radio frequency (RF) exposure by limiting the length of calls or by using handsfree devices.

Hearing

Warning: When you use the headset, your ability to hear outside sounds may be affected. Do not use the headset where it can endanger your or others' safety. Check with the manufacturer's website for more information on hearing aids. Some wireless devices may interfere with some hearing aids.

Nickel

The surface of this device is nickel-free.

Vehicles

Radio signals may affect improperly installed or inadequately shielded electronic systems in vehicles. For more info, check with the manufacturer of your vehicle or its equipment.
Only authorized personnel should install the device in a vehicle. Faulty installation may be dangerous and invalidate your warranty. Check regularly that all wireless device equipment in your vehicle is mounted and operating properly. Do not store or carry flammable or explosive materials in the same compartment as the device, its parts, or accessories. Do not place your device or accessories in the air bag deployment area.

Potentially explosive environments

Use your device off in potentially explosive environments, such as near gas pumps. Sparks may cause an explosion or fire resulting in injury or death. Note restrictions in areas with fuel, chemical plants, or where blasting operations are in progress. Areas with a potentially explosive environment may not be clearly marked. These usually are areas where you are advised to switch your engine off, below deck on boats, chemical transfer or storage facilities, and where the air contains chemicals or vapors. Check with the manufacturer of vehicles using liquefied petroleum gas (such as propane or butane) if this device can be safely used in its vicinity.

Certification information (SAR)

This mobile device meets guidelines for exposure to radio waves as set forth by the Federal Communications Commission (FCC). Refer to the following:

FCC RF Exposure Information
Your handset is a radio transmitter and receiver. It is designed and manufactured not to exceed the emission limits for exposure to radio frequency (RF) energy by the Federal Communications Commission of the U.S. Government. The guidelines are based on standards that were developed by independent scientific organizations through periodic and thorough evaluation of scientific studies. The standards include a substantial safety margin designed to assure the safety of all persons, regardless of age and health.

The exposure standard for wireless handsets employs a unit of measurement known as the Specific Absorption Rate, or SAR. The FCC SAR limit set by the FCC is 1.6 W/kg. The tests are performed in positions and locations (e.g. at the ear and worn on the body) as required by the FCC for each model. The highest SAR value for this handset model as reported to the FCC when tested for use at the ear is 1.06 W/kg, and when worn on the body in a holder or carry case, is 1.17 W/kg.

RF Exposure Operation: This device was tested for typical body-worn operations with the handset kept 1.5 cm from the body. To maintain compliance with FCC RF exposure requirements, use accessories that maintain a 1.5 cm separation distance between the user's body and the handset. This equipment has been tested and certain accessories should not contain metallic components in its assembly. The use of accessories that do not satisfy these requirements may not comply with FCC RF exposure requirements, and should be avoided. The FCC has granted an Equipment Authorization for this handset model with all reported SAR levels evaluated in accordance with the FCC RF emission guidelines. SAR for conflict of law principles. This device is compliant with the FCC and can be found under the FCC ID Search section of www.fcc.gov/oet/ea/ after searching on FCC ID 2AJD77A-1420. Additional information regarding Specific Absorption Rates (SAR) can be found on the FCC website at <http://www.fcc.gov/general/radio-frequency-safety-0>. To send data or messages, a good connection to the network is needed. Sending may be delayed until such a connection is available. Follow the separation distance instructions until the sending is finished.

During general use, the SAR values are usually well below the values stated above. This is because, for purposes of system efficiency and to minimize interference on the network, the operating power of your

mobile is automatically decreased when full power is not needed for the call. The lower the power output, the lower the SAR value. Device models may have different versions and more than one value. Component and design changes may occur over time and some changes could affect SAR values. For more info, go to www.sar-tick.com. Note that mobile devices may be transmitting even if you are not making a voice call.

About Digital Rights Management

When using this device, obey all laws and respect local customs, privacy and legitimate rights of others, including copyrights. Copyright protection may prevent you from copying, modifying, or transferring photos, music, and other content.

Copyrights and other notices

FCC notice:

This device complies with part 15 of the FCC rules and standards. Operation is subject to the following two conditions: (1) This device may not cause harmful interference, and (2) this device must accept any interference received, including interference that may cause undesired operation. For more info, go to www.fcc.gov/engineering-technology/electromagnetic-compatibility-division/radio-frequency-safety/fair/fair-safety. Any changes or modifications not expressly approved by HMD Global could void the user's authority to operate this equipment. Note: This equipment has been tested and found to comply with the limits for a Class B digital device, pursuant to part 15 of the FCC Rules. These limits are designed to provide reasonable protection against harmful interference to a residential installation. This equipment generates, uses and can radiate radio frequency energy and, if not installed and used in accordance with the instructions, may cause harmful interference to radio communications. However, there is no guarantee that interference will not occur in a particular installation. If this equipment does cause harmful interference to radio or television reception, which can be determined by turning the equipment off and on, the user is encouraged to try to correct the interference by one or more of the following measures:

- Reorient or relocate the receiving antenna.
- Increase the separation between the equipment and receiver.
- Connect the equipment into an outlet on a circuit different from that to which the receiver is connected.
- Consult the dealer or an experienced radio/TV technician for help.

date the Notice of Dispute is sent. After 60 days, you or Manufacturer may commence arbitration.

- (ii) Small Claims Court. You may also litigate any dispute in small claims court in your county of residence (or if a business, the location of your principal place of business), if the dispute meets all requirements to be heard in the small claims court. You may litigate in small claims court whether or not you negotiated informally first.
- (iii) Binding Arbitration. If you and Manufacturer do not resolve any dispute by informal negotiation or in small claims court, any other effort to resolve the dispute will be conducted exclusively by individual binding arbitration governed by the Federal Arbitration Act ("FAA"). Class arbitrations are not permitted. You are giving up the right to litigate a dispute in court before a judge or jury, or to participate as a party or class member). Instead, all disputes will be resolved before a neutral arbitrator, whose decision will be final except for a limited right of appeal under the FAA. Any court with jurisdiction over the parties may enforce the arbitration award.
- (iv) Class Action Waiver. Any proceedings to resolve or litigate any dispute in any forum will be conducted solely on an individual basis. No class or collective action will be permitted, and you agree to waive as a class action, private attorney general action, or in any other proceeding in which either party acts or proposes to act in a representative capacity. No arbitration or other proceeding will be combined with another without the prior written consent of all parties to all affected arbitrations or proceedings.

(v) Arbitration Procedure. Any arbitration will be conducted by the American Arbitration Association (the "AAA") under its Commercial Arbitration Rules. If you are an individual and use the Product or Accessory for personal or household use, or if the value of the dispute is \$75,000 USD or less whether or not you are an individual or how you use the Product or Accessory, the AAA's Consumer Arbitration Rules will apply. For more information, see www.adr.org or call 1-800-778-7879. To commence arbitration, send a request to HMD America, Inc., Attn: Dispute Notice, 1200 Brickell Avenue, Suite 510, Miami, FL 33131. You agree to commence arbitration only in your county of residence (or if a business, the county where your principal place of business is located). You may request a telephonic or in-person hearing by following the AAA rules. In a dispute involving \$10,000 USD or less, any hearing will be telephonic unless the arbitrator finds good cause to hold an in-person hearing instead. The arbitrator may award the same damages to you individually as a court could. The arbitrator

may award declaratory or injunctive relief only to you individually, and only to the extent required to satisfy your individual claim.

- (vi) Arbitration Fees and Payments.
 - (a) Disputes Involving \$75,000 USD or Less. Manufacturer will promptly reimburse your filing fees and pay the AAA's and arbitrator's fees and expenses. If you reject Manufacturer's last written settlement offer made before the arbitrator was appointed ("Manufacturer's last written offer"), and your dispute goes all the way to an arbitrator's decision (called an "award"), and the arbitrator awards you more than Manufacturer's last written offer, Manufacturer will:
 - (i) pay the greater of the award or \$1,000 USD;
 - (ii) pay your reasonable attorney's fees; and
 - (iii) reimburse any out of pocket expenses including expert witness fees and costs) that your attorney reasonably accrues for investigating, preparing, and pursuing your claim in arbitration. The arbitrator will determine the amount of fees, costs, and expenses unless you and Manufacturer agree on them.
 - (b) Disputes Involving More Than \$75,000 USD. The AAA rules will govern payment of filing fees and the AAA's and arbitrator's fees and expenses.
 - (c) Disputes Involving Any Amount. In any arbitration you commence, Manufacturer will seek its AAA or arbitrator's fees and expenses, or your filing fees (if reimbursed), only if the arbitrator finds the arbitration frivolous or brought for an improper purpose. In any arbitration Manufacturer commences, Manufacturer will pay all filing, AAA, and arbitrator's fees and expenses. Manufacturer will not seek its attorney's fees or expenses from you in any arbitration. Fees and expenses are not counted in determining how much a dispute involves.
 - (vii) Conflict with AAA Rules. This Warranty governs to the extent it conflicts with AAA's Commercial Arbitration Rules or Consumer Arbitration Rules.
 - (viii) Claims or Disputes Must Be Filed Within One Year. To the extent permitted by law, any claim or dispute to which Section 6 applies must be filed within one year in small claims court, an arbitration proceeding, or in court. If Section 6 permits the dispute to be filed in court instead of arbitration, the one-year period begins when the claim or Notice of Dispute first could be filed. If such a claim or dispute is not filed within one year, it is permanently barred.
 - (ix) Severability. If the class action waiver in this section is found to be illegal or unenforceable as to all or some parts of a dispute, then Section 6 will not apply to those parts. Instead, those parts will be severed and proceed in a court of law, with the remaining parts proceeding in arbitration. If any other provision of Section 6 is found

to be illegal or unenforceable, that provision will be severed with the remainder of this Section 6 remaining in full force and effect.

7. Other important notices

Manufacturer reserves the right to make changes to the location and availability of its authorized service centers network at any time. Your Product may contain specific elements which may not operate as intended when used outside of the original country of purchase. Manufacturer's Address: HMD Global Oy, Bertel Jungin aukio 9, 02620 Espoo, Finland. United States: HMD America, Inc., 1200 Brickell Avenue, Suite 510, Miami, FL 33131. Canada: HMD America, Inc., 1200 Brickell Avenue, Suite 510, Miami, FL 33131.

battery or charger. Only use the charger indoors. Do not charge your device during a lightning storm.
To unplug a charger or an accessory, hold and pull the plug, not the cord.

Additionally, the following applies if your device has a removable battery:

- Always switch the device off and unplug the charger before removing the battery.
- Accidental short-circuiting can happen when a metallic object touches the metal strips on the battery. This may damage the battery or the other object.

Small children

Your device and its accessories are not toys. They may contain small parts. Keep them out of the reach of small children.

Medical devices

Operation of radio transmitting equipment, including wireless phones, may interfere with inadequately shielded medical devices or their working life. Do not dispose of these products as unsorted municipal waste; take them for recycling. For info on your nearest recycling point, check with your local waste authority.

Battery and charger info

Use your device only with an original HE402 rechargeable battery. Charge your device with the DSA-SPF18-05 charger. Charger plug type may vary. HMD Global may make additional battery or charger models available for this device.

Battery and charger safety

Once charging of your device is complete, unplug the charger from the device and electrical outlet. Please note that continuous charging should not exceed 12 hours. If left unused, a fully charged battery will lose its charge over time. Always keep the battery between 15°C and 25°C (59°F and 77°F) for optimal performance. Extreme temperatures reduce the capacity and lifetime of the battery. A device with a hot or cold battery may not work temporarily. Obey local regulations. Recycle when possible. Do not dispose as household waste. Do not expose the battery to extremely low air pressure or leave it to extremely high temperature, for example dispose it in a fire, as that may cause the battery to explode or leak flammable liquid or gas. Do not dismantle, cut, crush, bend, puncture, or otherwise damage the battery in any way. If a battery leaks, do not let liquid touch skin or eyes. If this happens, immediately flush the affected areas with water, or seek medical help. Do not modify, attempt to insert foreign objects into the battery, or immerse or expose it to water or other liquids. Batteries may explode if damaged.

Use the battery and charger for their intended purposes only, and use approved or incompatible batteries or chargers may present a risk of fire, explosion, or other hazard, and may invalidate any approval or warranty. If you believe the battery or charger is damaged, take it to a service center or your phone dealer before continuing to use it. Never use a damaged

(iii) Where the Product, Accessory or parts of a Product or Accessory have been replaced, the original Product, parts, or Accessories shall become the Manufacturer's or retailer's property.

Please always back up and remove all personal data, programs, applications, and content stored on your Product before taking your Product in for service since repair activities will erase all data from your Product. If your product is replaced, the data, programs, applications, and content stored on your Product will not be transferred to the replacement Product. Remove any confidential information prior to submitting your Product for service. Manufacturer, its authorized service centres and retailers are not responsible for the loss of your data, programs, applications, or content.

3. What this Warranty does not cover

- This Warranty excludes all of the following:
- (i) exposure to liquid or dampness unless the Product is declared to be water-resistant under certain conditions as specified by the Manufacturer), damage caused by exposure to extreme electromagnetic fields (such as damages caused by microwave ovens), or extreme thermal or environmental conditions or to rapid changes in such conditions, corrosion, oxidation, spillage of food or liquid, or influence from chemical products;
 - (ii) physical damage, cracks, dents or scratches caused by a drop or by external forces impacting the Product or any part of the Product including but not limited to the cover, display, camera lenses and buttons (unless specified otherwise by the Manufacturer under certain conditions);
 - (c) using your Product with, or connecting it to, any product, accessory, software, or service not manufactured, authorised, or supplied by Manufacturer or chargers, power adapters or data cables which do not meet the required technical and safety specifications described in the user guide;
 - (d) any third party products sold in combination with your Product; or any damage or errors caused by lack of, cracking, viruses, or other malware, or by unauthorised access to services, accounts, computer systems, or networks;
 - (ii) power outages or surges capable of affecting the normal use of the Product; or
 - (g) other acts beyond the Manufacturer's reasonable control.
- (iii) Any wear and tear.
(ii) Use of your Product in a manner that does not comply with its intended use and the provisions of the user guide;

