

P05 WCDMA V_RMC12.2K_Right Cheek_Ch4182

Communication System: WCDMA; Frequency: 836.4 MHz; Duty Cycle: 1:1

Medium: HSL835_1008 Medium parameters used: $f = 836.4$ MHz; $\sigma = 0.914$ S/m; $\epsilon_r = 42.068$; $\rho = 1000$ kg/m³

Ambient Temperature : 23.3°C; Liquid Temperature : 22.5°C

DASY5 Configuration:

- Probe: EX3DV4 - SN7612; ConvF(10.57, 10.57, 10.57); Calibrated: 2022/1/27
- Sensor-Surface: 2mm (Mechanical Surface Detection)
- Electronics: DAE4 Sn1633; Calibrated: 2021/10/26
- Phantom: SAM (30deg probe tilt) with CRP v5.0; Type: QD000P40CD; Serial: TP:1781
- Measurement SW: DASY52, Version 52.10 (4); SEMCAD X Version 14.6.14 (7483)

- **Area Scan (81x121x1):** Interpolated grid: dx=1.500 mm, dy=1.500 mm

Maximum value of SAR (interpolated) = 0.275 W/kg

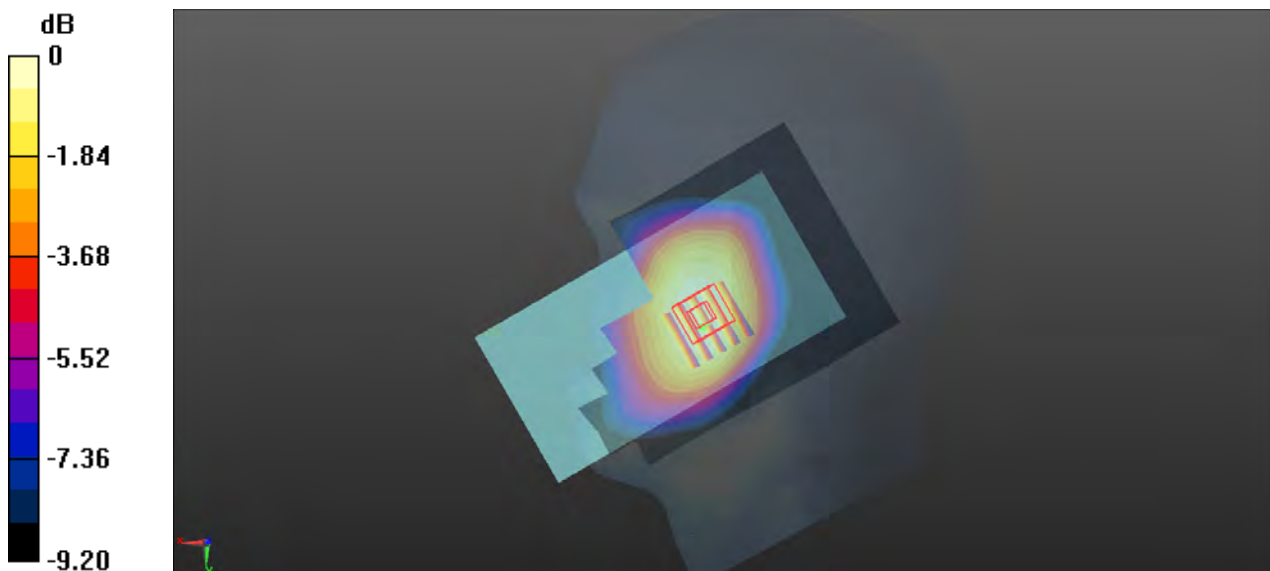
- **Zoom Scan (5x5x7)/Cube 0:** Measurement grid: dx=8mm, dy=8mm, dz=5mm

Reference Value = 4.165 V/m; Power Drift = -0.00 dB

Peak SAR (extrapolated) = 0.313 W/kg

SAR(1 g) = 0.261 W/kg; SAR(10 g) = 0.208 W/kg

Maximum value of SAR (measured) = 0.271 W/kg



0 dB = 0.271 W/kg

P06 LTE 2_QPSK20M_Right Cheek_Ch18700_1RB_OS99

Communication System: LTE; Frequency: 1860 MHz; Duty Cycle: 1:1

Medium: HSL1900_1008 Medium parameters used: $f = 1860$ MHz; $\sigma = 1.385$ S/m; $\epsilon_r = 39.569$; $\rho = 1000$ kg/m³

Ambient Temperature : 23.2°C; Liquid Temperature : 22.5°C

DASY5 Configuration:

- Probe: EX3DV4 - SN7612; ConvF(8.73, 8.73, 8.73); Calibrated: 2022/1/27
- Sensor-Surface: 2mm (Mechanical Surface Detection)
- Electronics: DAE4 Sn1633; Calibrated: 2021/10/26
- Phantom: SAM (30deg probe tilt) with CRP v5.0; Type: QD000P40CD; Serial: TP:1781
- Measurement SW: DASY52, Version 52.10 (4); SEMCAD X Version 14.6.14 (7483)

- **Area Scan (81x121x1)**: Interpolated grid: dx=1.500 mm, dy=1.500 mm

Maximum value of SAR (interpolated) = 0.176 W/kg

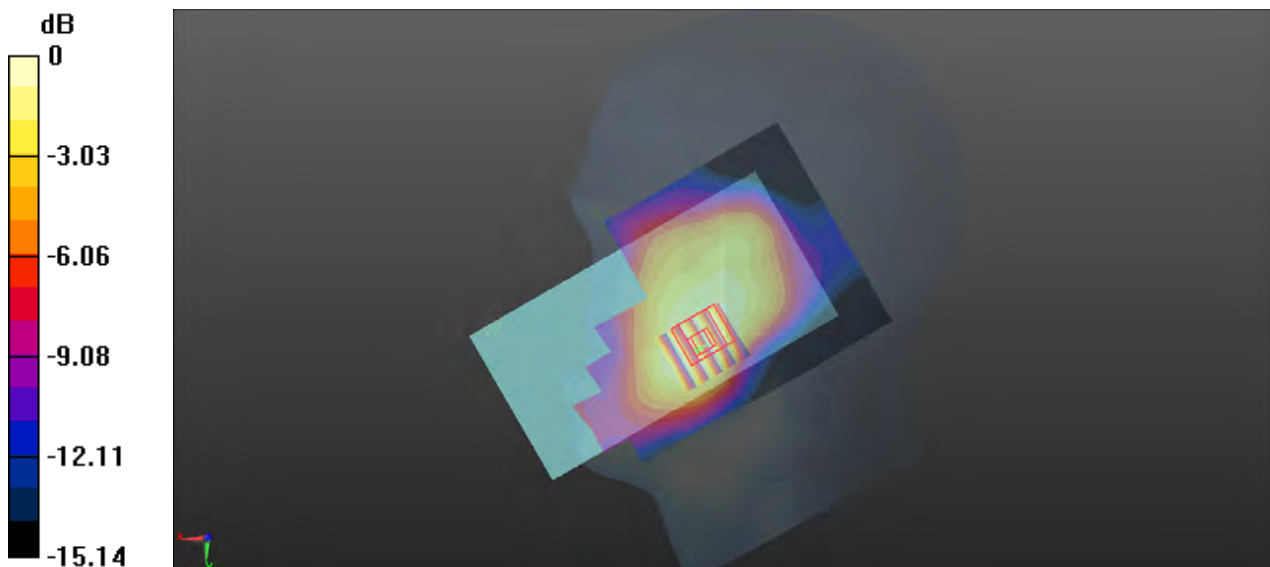
- **Zoom Scan (5x5x7)/Cube 0**: Measurement grid: dx=8mm, dy=8mm, dz=5mm

Reference Value = 4.064 V/m; Power Drift = -0.04 dB

Peak SAR (extrapolated) = 0.224 W/kg

SAR(1 g) = 0.158 W/kg; SAR(10 g) = 0.107 W/kg

Maximum value of SAR (measured) = 0.168 W/kg



0 dB = 0.168 W/kg

P07 LTE 5_QPSK10M_Right Cheek_Ch20450_1RB_OS0

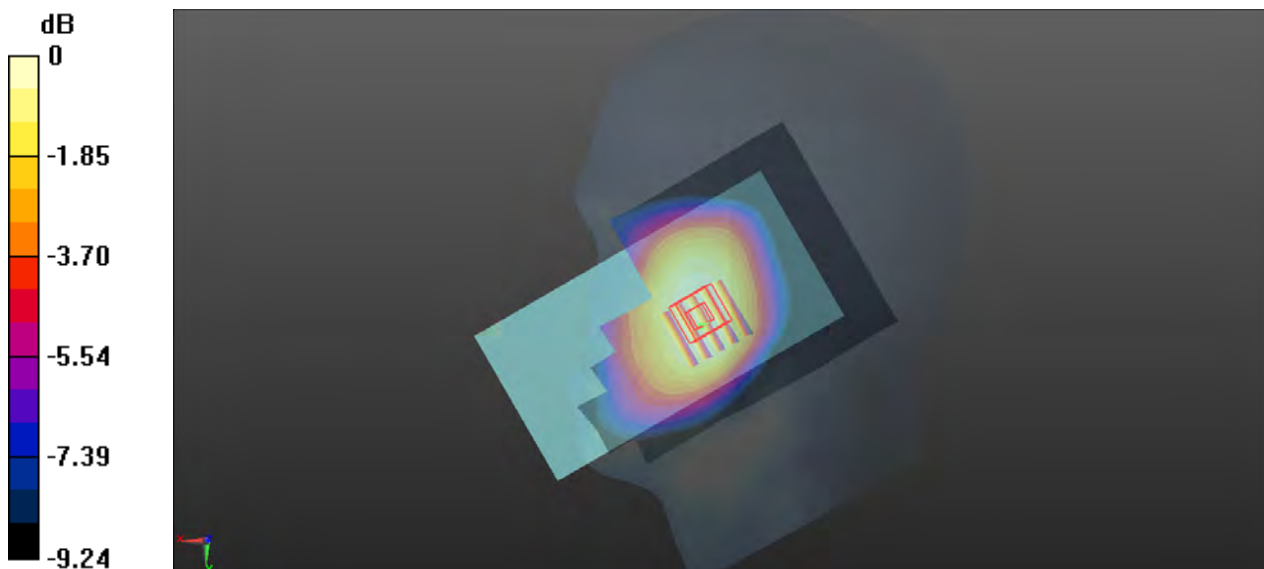
Communication System: LTE; Frequency: 829 MHz; Duty Cycle: 1:1
Medium: HSL835_1008 Medium parameters used: $f = 829 \text{ MHz}$; $\sigma = 0.912 \text{ S/m}$; $\epsilon_r = 42.09$; $\rho = 1000 \text{ kg/m}^3$
Ambient Temperature : 23.3°C ; Liquid Temperature : 22.5°C

DASY5 Configuration:

- Probe: EX3DV4 - SN7612; ConvF(10.57, 10.57, 10.57); Calibrated: 2022/1/27
- Sensor-Surface: 2mm (Mechanical Surface Detection)
- Electronics: DAE4 Sn1633; Calibrated: 2021/10/26
- Phantom: SAM (30deg probe tilt) with CRP v5.0; Type: QD000P40CD; Serial: TP:1781
- Measurement SW: DASY52, Version 52.10 (4); SEMCAD X Version 14.6.14 (7483)

- **Area Scan (81x121x1):** Interpolated grid: $dx=1.500 \text{ mm}$, $dy=1.500 \text{ mm}$
Maximum value of SAR (interpolated) = 0.251 W/kg

- **Zoom Scan (5x5x7)/Cube 0:** Measurement grid: $dx=8\text{mm}$, $dy=8\text{mm}$, $dz=5\text{mm}$
Reference Value = 3.780 V/m ; Power Drift = 0.09 dB
Peak SAR (extrapolated) = 0.293 W/kg
SAR(1 g) = 0.241 W/kg ; SAR(10 g) = 0.190 W/kg
Maximum value of SAR (measured) = 0.250 W/kg



0 dB = 0.250 W/kg

P08 LTE 7_QPSK20M_Right Cheek_Ch21100_1RB_OS0

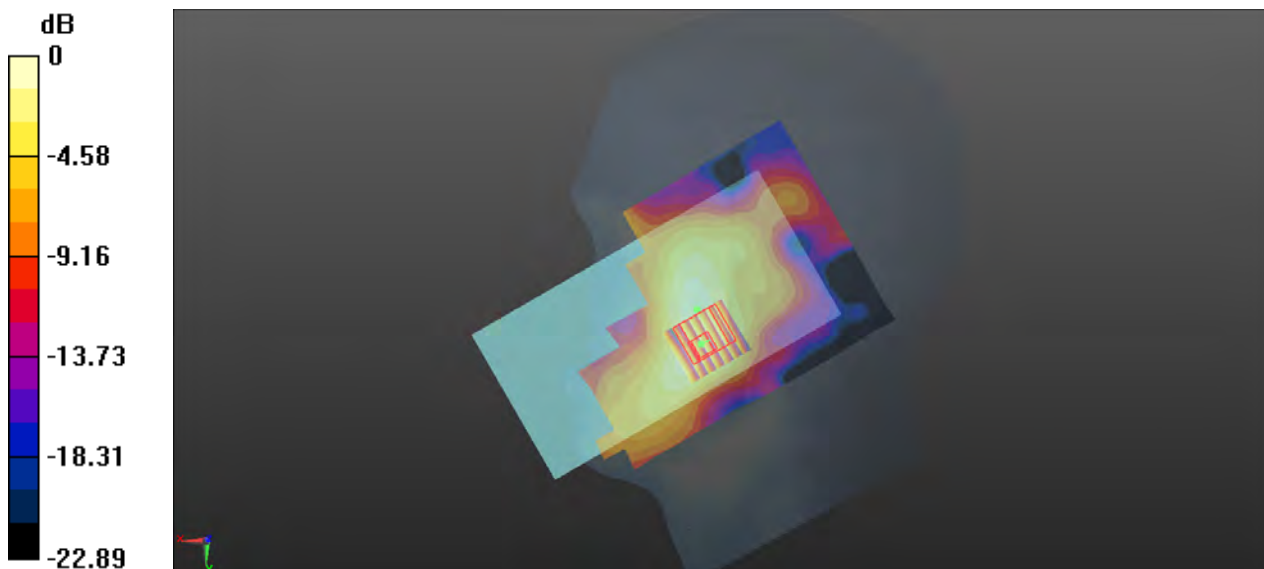
Communication System: LTE; Frequency: 2535 MHz; Duty Cycle: 1:1
Medium: HSL2600_1009 Medium parameters used: $f = 2535$ MHz; $\sigma = 1.844$ S/m; $\epsilon_r = 39.349$; $\rho = 1000$ kg/m³
Ambient Temperature : 23.5°C; Liquid Temperature : 22.6°C

DASY5 Configuration:

- Probe: EX3DV4 - SN7612; ConvF(7.7, 7.7, 7.7); Calibrated: 2022/1/27
- Sensor-Surface: 2mm (Mechanical Surface Detection)
- Electronics: DAE4 Sn1633; Calibrated: 2021/10/26
- Phantom: SAM (30deg probe tilt) with CRP v5.0; Type: QD000P40CD; Serial: TP:1781
- Measurement SW: DASY52, Version 52.10 (4); SEMCAD X Version 14.6.14 (7483)

- **Area Scan (101x161x1)**: Interpolated grid: dx=1.200 mm, dy=1.200 mm
Maximum value of SAR (interpolated) = 0.127 W/kg

- **Zoom Scan (7x7x7)/Cube 0**: Measurement grid: dx=5mm, dy=5mm, dz=5mm
Reference Value = 1.225 V/m; Power Drift = 0.03 dB
Peak SAR (extrapolated) = 0.203 W/kg
SAR(1 g) = 0.114 W/kg; SAR(10 g) = 0.068 W/kg
Maximum value of SAR (measured) = 0.125 W/kg



0 dB = 0.125 W/kg

P09 LTE 12_QPSK10M_Left Cheek_Ch23095_1RB_OS0

Communication System: LTE; Frequency: 707.5 MHz; Duty Cycle: 1:1

Medium: HSL750_1008 Medium parameters used: $f = 707.5$ MHz; $\sigma = 0.876$ S/m; $\epsilon_r = 43.539$; $\rho = 1000$ kg/m³

Ambient Temperature : 23.3°C; Liquid Temperature : 22.6°C

DASY5 Configuration:

- Probe: EX3DV4 - SN7612; ConvF(11.02, 11.02, 11.02); Calibrated: 2022/1/27

- Sensor-Surface: 2mm (Mechanical Surface Detection)

- Electronics: DAE4 Sn1633; Calibrated: 2021/10/26

- Phantom: SAM (30deg probe tilt) with CRP v5.0; Type: QD000P40CD; Serial: TP:1781

- Measurement SW: DASY52, Version 52.10 (4); SEMCAD X Version 14.6.14 (7483)

- **Area Scan (81x121x1)**: Interpolated grid: dx=1.500 mm, dy=1.500 mm

Maximum value of SAR (interpolated) = 0.154 W/kg

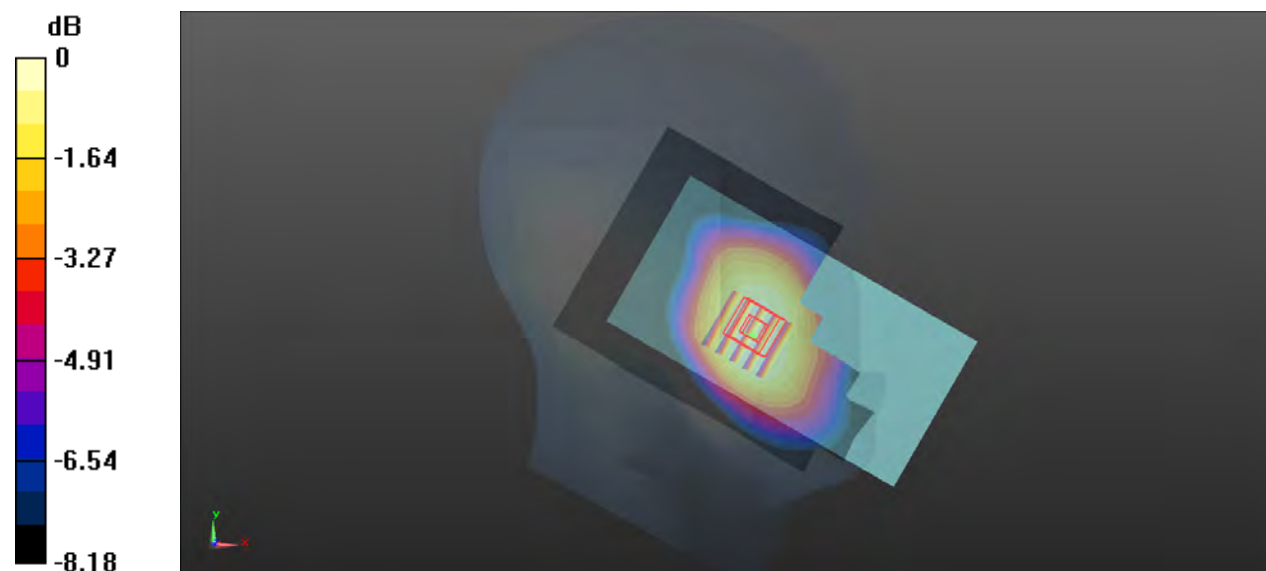
- **Zoom Scan (5x5x7)/Cube 0**: Measurement grid: dx=8mm, dy=8mm, dz=5mm

Reference Value = 3.539 V/m; Power Drift = 0.04 dB

Peak SAR (extrapolated) = 0.175 W/kg

SAR(1 g) = 0.147 W/kg; SAR(10 g) = 0.119 W/kg

Maximum value of SAR (measured) = 0.152 W/kg



0 dB = 0.152 W/kg

P10 LTE 13_QPSK10M_Left Cheek_Ch23230_1RB_OS0

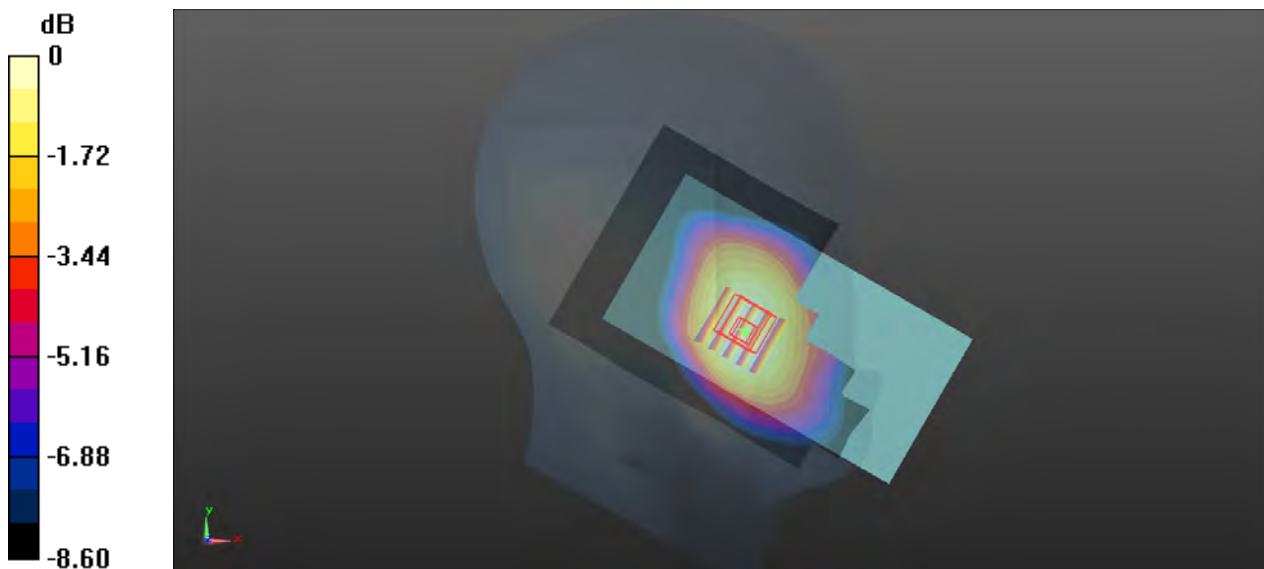
Communication System: LTE; Frequency: 782 MHz; Duty Cycle: 1:1
Medium: HSL750_1008 Medium parameters used: $f = 782 \text{ MHz}$; $\sigma = 0.902 \text{ S/m}$; $\epsilon_r = 43.351$; $\rho = 1000 \text{ kg/m}^3$
Ambient Temperature : 23.3°C ; Liquid Temperature : 22.6°C

DASY5 Configuration:

- Probe: EX3DV4 - SN7612; ConvF(11.02, 11.02, 11.02); Calibrated: 2022/1/27
- Sensor-Surface: 2mm (Mechanical Surface Detection)
- Electronics: DAE4 Sn1633; Calibrated: 2021/10/26
- Phantom: SAM (30deg probe tilt) with CRP v5.0; Type: QD000P40CD; Serial: TP:1781
- Measurement SW: DASY52, Version 52.10 (4); SEMCAD X Version 14.6.14 (7483)

- **Area Scan (81x121x1)**: Interpolated grid: $dx=1.500 \text{ mm}$, $dy=1.500 \text{ mm}$
Maximum value of SAR (interpolated) = 0.239 W/kg

- **Zoom Scan (5x5x7)/Cube 0**: Measurement grid: $dx=8\text{mm}$, $dy=8\text{mm}$, $dz=5\text{mm}$
Reference Value = 4.790 V/m ; Power Drift = 0.16 dB
Peak SAR (extrapolated) = 0.272 W/kg
SAR(1 g) = 0.228 W/kg ; SAR(10 g) = 0.182 W/kg
Maximum value of SAR (measured) = 0.239 W/kg



0 dB = 0.239 W/kg

P11 LTE 66_QPSK20M_Right Cheek_Ch132572_1RB_OS0

Communication System: LTE; Frequency: 1770 MHz; Duty Cycle: 1:1

Medium: HSL1750_1008 Medium parameters used: $f = 1770$ MHz; $\sigma = 1.342$ S/m; $\epsilon_r = 39.613$; $\rho = 1000$ kg/m³

Ambient Temperature : 23.4°C; Liquid Temperature : 22.6°C

DASY5 Configuration:

- Probe: EX3DV4 - SN7612; ConvF(8.9, 8.9, 8.9); Calibrated: 2022/1/27
- Sensor-Surface: 2mm (Mechanical Surface Detection)
- Electronics: DAE4 Sn1633; Calibrated: 2021/10/26
- Phantom: SAM (30deg probe tilt) with CRP v5.0; Type: QD000P40CD; Serial: TP:1781
- Measurement SW: DASY52, Version 52.10 (4); SEMCAD X Version 14.6.14 (7483)

- **Area Scan (81x121x1):** Interpolated grid: dx=1.500 mm, dy=1.500 mm

Maximum value of SAR (interpolated) = 0.167 W/kg

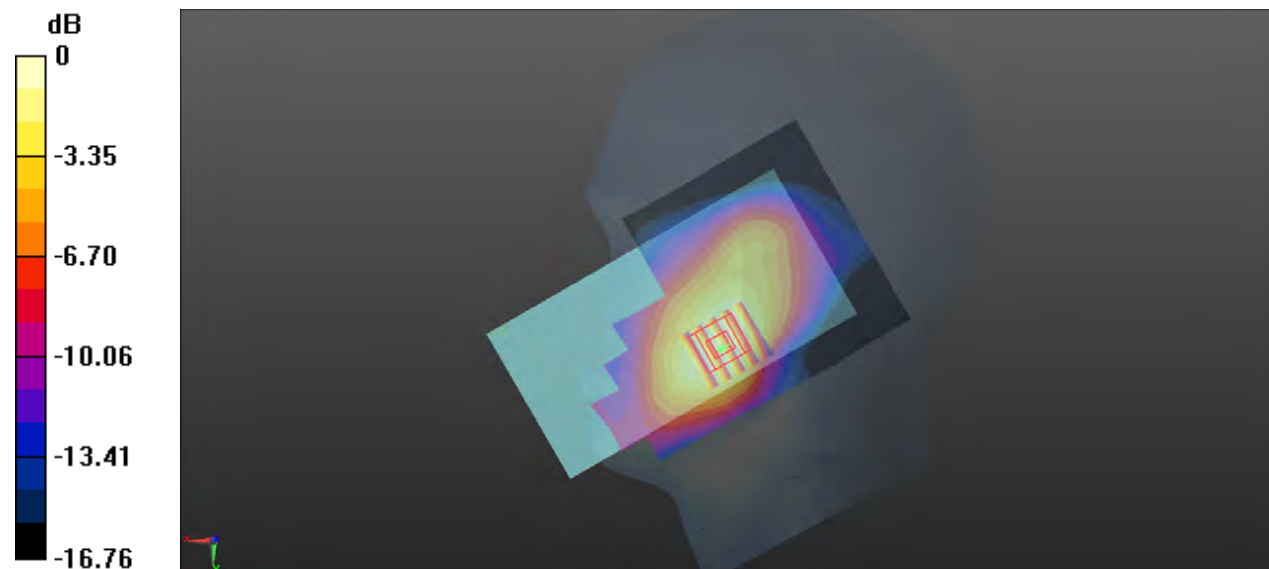
- **Zoom Scan (5x5x7)/Cube 0:** Measurement grid: dx=8mm, dy=8mm, dz=5mm

Reference Value = 3.564 V/m; Power Drift = -0.07 dB

Peak SAR (extrapolated) = 0.210 W/kg

SAR(1 g) = 0.147 W/kg; SAR(10 g) = 0.096 W/kg

Maximum value of SAR (measured) = 0.158 W/kg



0 dB = 0.158 W/kg

P12 WLAN2.4G_802.11b_Left Cheek_Ch1

Communication System: 802.11b; Frequency: 2412 MHz; Duty Cycle: 1:1.03

Medium: HSL2450_1009 Medium parameters used: $f = 2412$ MHz; $\sigma = 1.761$ S/m; $\epsilon_r = 39.505$; $\rho = 1000$ kg/m³

Ambient Temperature : 23.5°C; Liquid Temperature : 22.5°C

DASY5 Configuration:

- Probe: EX3DV4 - SN7612; ConvF(7.9, 7.9, 7.9); Calibrated: 2022/1/27
- Sensor-Surface: 2mm (Mechanical Surface Detection)
- Electronics: DAE4 Sn1633; Calibrated: 2021/10/26
- Phantom: SAM (30deg probe tilt) with CRP v5.0; Type: QD000P40CD; Serial: TP:1781
- Measurement SW: DASY52, Version 52.10 (4); SEMCAD X Version 14.6.14 (7483)

- **Area Scan (101x161x1)**: Interpolated grid: dx=1.200 mm, dy=1.200 mm

Maximum value of SAR (interpolated) = 0.832 W/kg

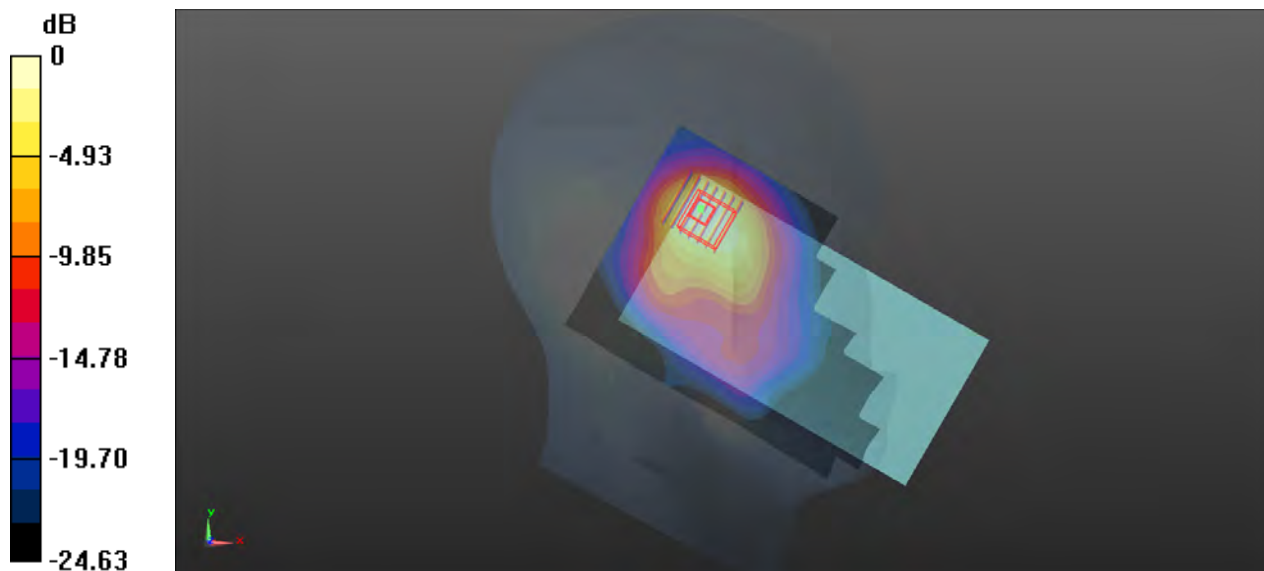
- **Zoom Scan (7x7x7)/Cube 0**: Measurement grid: dx=5mm, dy=5mm, dz=5mm

Reference Value = 9.061 V/m; Power Drift = 0.00 dB

Peak SAR (extrapolated) = 1.55 W/kg

SAR(1 g) = 0.738 W/kg; SAR(10 g) = 0.375 W/kg

Maximum value of SAR (measured) = 0.817 W/kg



0 dB = 0.817 W/kg

P13 WLAN5G_802.11a_Right Tilted_Ch64

Communication System: 802.11a; Frequency: 5320 MHz; Duty Cycle: 1:1.12

Medium: HSL5G_1012 Medium parameters used: $f = 5320$ MHz; $\sigma = 4.668$ S/m; $\epsilon_r = 35.988$; $\rho = 1000$ kg/m³

Ambient Temperature : 23.5°C; Liquid Temperature : 22.6°C

DASY5 Configuration:

- Probe: EX3DV4 - SN7612; ConvF(5.54, 5.54, 5.54); Calibrated: 2022/1/27

- Sensor-Surface: 2mm (Mechanical Surface Detection)

- Electronics: DAE4 Sn1633; Calibrated: 2021/10/26

- Phantom: SAM (30deg probe tilt) with CRP v5.0; Type: QD000P40CD; Serial: TP:1781

- Measurement SW: DASY52, Version 52.10 (4); SEMCAD X Version 14.6.14 (7483)

- **Area Scan (101x181x1)**: Interpolated grid: dx=1.000 mm, dy=1.000 mm

Maximum value of SAR (interpolated) = 1.26 W/kg

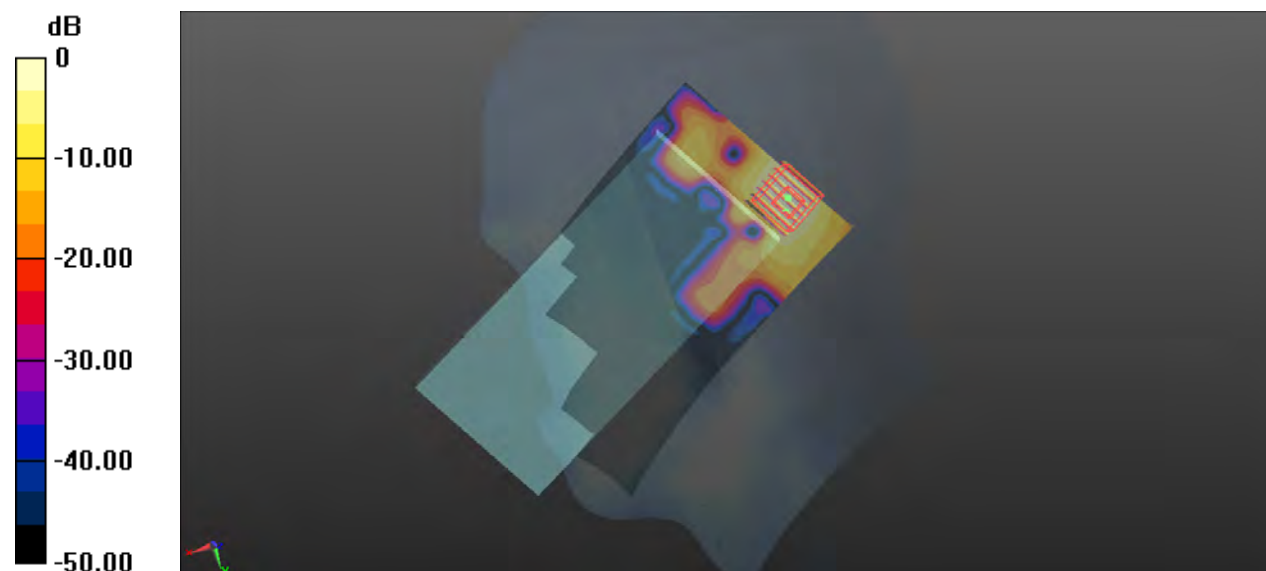
- **Zoom Scan (7x7x12)/Cube 0**: Measurement grid: dx=4mm, dy=4mm, dz=2mm

Reference Value = 3.611 V/m; Power Drift = -0.08 dB

Peak SAR (extrapolated) = 1.95 W/kg

SAR(1 g) = 0.553 W/kg; SAR(10 g) = 0.181 W/kg

Maximum value of SAR (measured) = 1.24 W/kg



0 dB = 1.24 W/kg

P14 WLAN5G_802.11a_Right Tilted_Ch140

Communication System: 802.11a; Frequency: 5700 MHz; Duty Cycle: 1:1.12

Medium: HSL5G_1010 Medium parameters used: $f = 5700$ MHz; $\sigma = 5.119$ S/m; $\epsilon_r = 35.531$; $\rho = 1000$ kg/m³

Ambient Temperature : 23.5°C; Liquid Temperature : 22.7°C

DASY5 Configuration:

- Probe: EX3DV4 - SN7612; ConvF(5.11, 5.11, 5.11); Calibrated: 2022/1/27
- Sensor-Surface: 2mm (Mechanical Surface Detection)
- Electronics: DAE4 Sn1633; Calibrated: 2021/10/26
- Phantom: SAM (30deg probe tilt) with CRP v5.0; Type: QD000P40CD; Serial: TP:1781
- Measurement SW: DASY52, Version 52.10 (4); SEMCAD X Version 14.6.14 (7483)

- **Area Scan (101x181x1)**: Interpolated grid: dx=1.000 mm, dy=1.000 mm

Maximum value of SAR (interpolated) = 0.779 W/kg

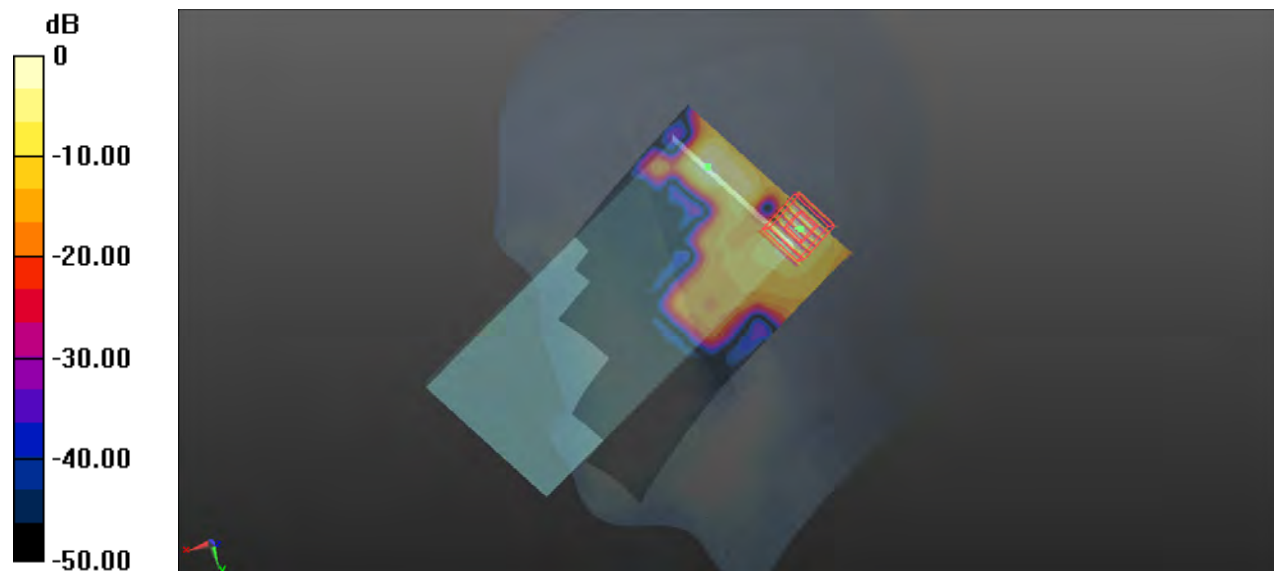
- **Zoom Scan (7x7x12)/Cube 0**: Measurement grid: dx=4mm, dy=4mm, dz=2mm

Reference Value = 4.797 V/m; Power Drift = 0.05 dB

Peak SAR (extrapolated) = 1.62 W/kg

SAR(1 g) = 0.429 W/kg; SAR(10 g) = 0.121 W/kg

Maximum value of SAR (measured) = 1.07 W/kg



0 dB = 1.07 W/kg

P15 WLAN5G_802.11a_Left Cheek_Ch165

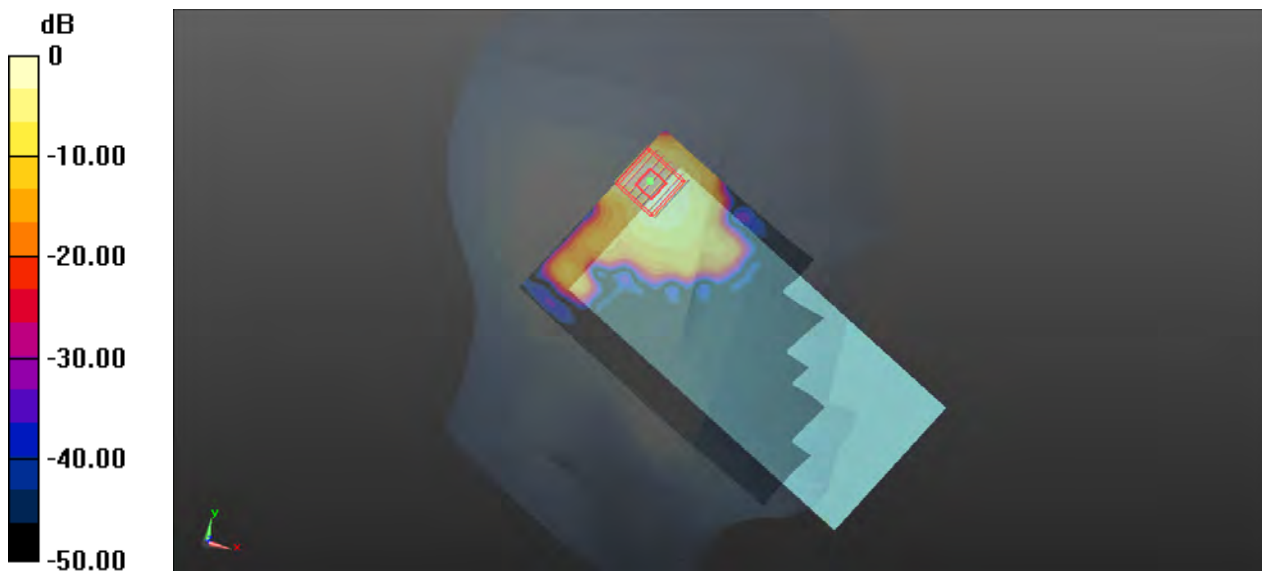
Communication System: 802.11a; Frequency: 5825 MHz; Duty Cycle: 1:1.11
Medium: HSL5G_1011 Medium parameters used: $f = 5825$ MHz; $\sigma = 5.216$ S/m; $\epsilon_r = 35.209$; $\rho = 1000$ kg/m³
Ambient Temperature : 23.4°C; Liquid Temperature : 22.6°C

DASY5 Configuration:

- Probe: EX3DV4 - SN7612; ConvF(5.2, 5.2, 5.2); Calibrated: 2022/1/27
- Sensor-Surface: 2mm (Mechanical Surface Detection)
- Electronics: DAE4 Sn1633; Calibrated: 2021/10/26
- Phantom: SAM (30deg probe tilt) with CRP v5.0; Type: QD000P40CD; Serial: TP:1781
- Measurement SW: DASY52, Version 52.10 (4); SEMCAD X Version 14.6.14 (7483)

- **Area Scan (101x181x1)**: Interpolated grid: dx=1.000 mm, dy=1.000 mm
Maximum value of SAR (interpolated) = 1.34 W/kg

- **Zoom Scan (7x7x12)/Cube 0**: Measurement grid: dx=4mm, dy=4mm, dz=2mm
Reference Value = 2.669 V/m; Power Drift = -0.07 dB
Peak SAR (extrapolated) = 2.37 W/kg
SAR(1 g) = 0.554 W/kg; SAR(10 g) = 0.177 W/kg
Maximum value of SAR (measured) = 1.45 W/kg



0 dB = 1.45 W/kg

P16 BT_GFSK_Left Cheek_Ch0

Communication System: BT; Frequency: 2402 MHz; Duty Cycle: 1:1.3

Medium: HSL2450_1009 Medium parameters used: $f = 2402$ MHz; $\sigma = 1.755$ S/m; $\epsilon_r = 39.515$; $\rho = 1000$ kg/m³

Ambient Temperature : 23.5°C; Liquid Temperature : 22.5°C

DASY5 Configuration:

- Probe: EX3DV4 - SN7612; ConvF(7.9, 7.9, 7.9); Calibrated: 2022/1/27
- Sensor-Surface: 2mm (Mechanical Surface Detection)
- Electronics: DAE4 Sn1633; Calibrated: 2021/10/26
- Phantom: SAM (30deg probe tilt) with CRP v5.0; Type: QD000P40CD; Serial: TP:1781
- Measurement SW: DASY52, Version 52.10 (4); SEMCAD X Version 14.6.14 (7483)

- **Area Scan (101x161x1)**: Interpolated grid: dx=1.200 mm, dy=1.200 mm

Maximum value of SAR (interpolated) = 0.0668 W/kg

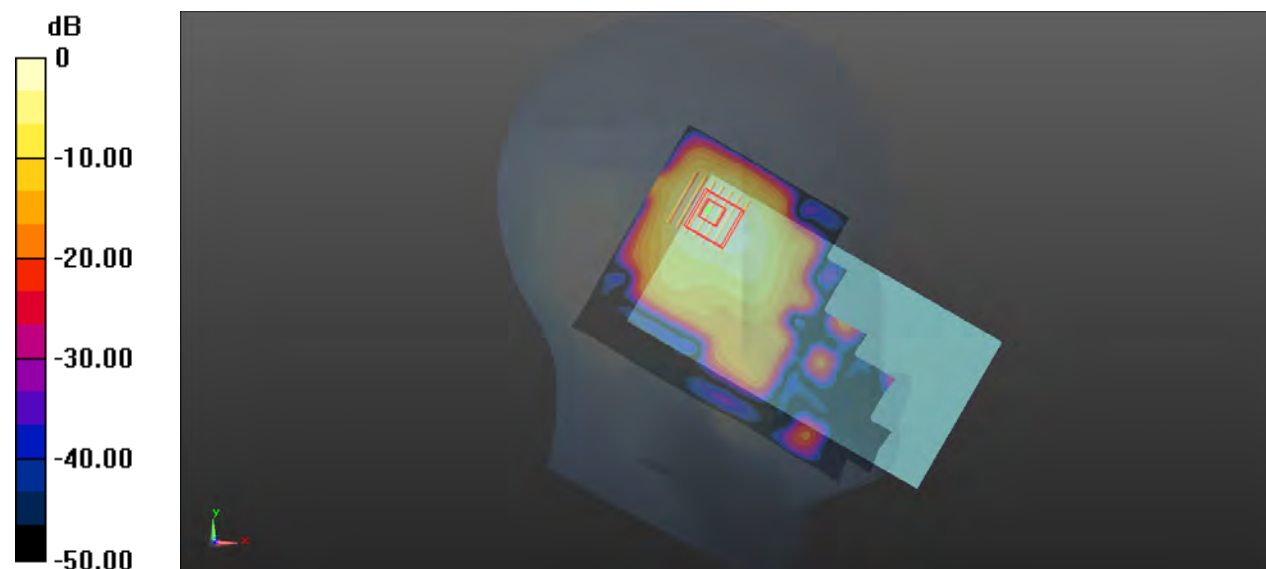
- **Zoom Scan (7x7x7)/Cube 0**: Measurement grid: dx=5mm, dy=5mm, dz=5mm

Reference Value = 2.503 V/m; Power Drift = 0.18 dB

Peak SAR (extrapolated) = 0.133 W/kg

SAR(1 g) = 0.061 W/kg; SAR(10 g) = 0.031 W/kg

Maximum value of SAR (measured) = 0.0670 W/kg



0 dB = 0.0670 W/kg

P17 GSM850_GPRS 2TX slot_Rear Face_1cm_Ch128

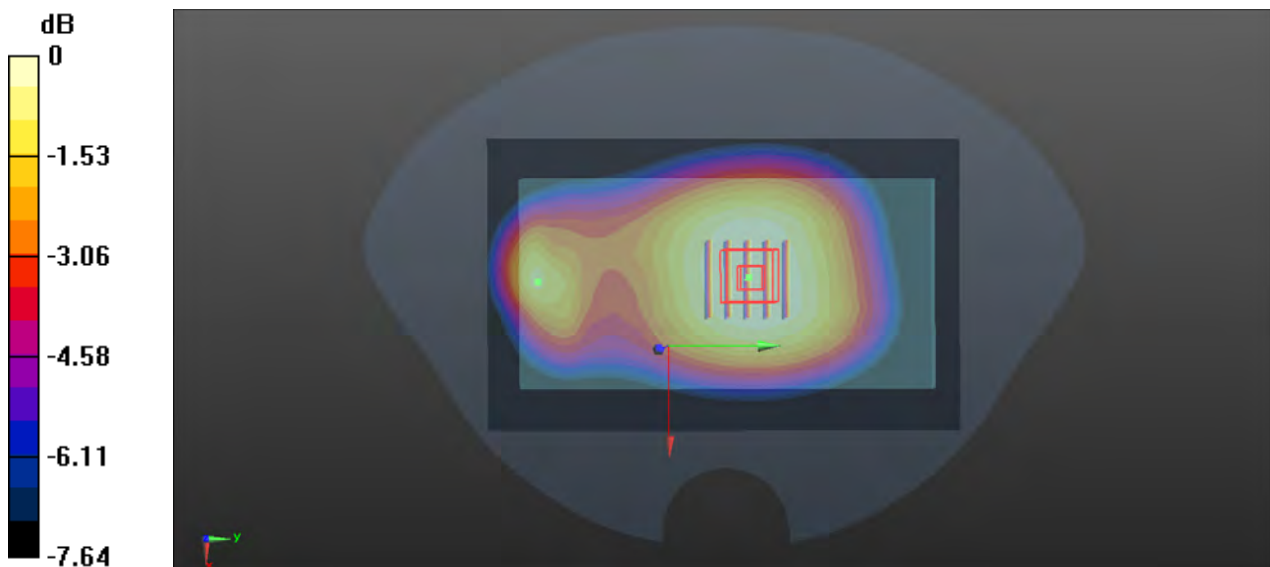
Communication System: GPRS 2Tx-slot; Frequency: 824.2 MHz; Duty Cycle: 1:4.15
 Medium: HSL835_1008 Medium parameters used: $f = 824.2$ MHz; $\sigma = 0.91$ S/m; $\epsilon_r = 42.102$; $\rho = 1000$ kg/m³
 Ambient Temperature : 23.3°C; Liquid Temperature : 22.5°C

DASY5 Configuration:

- Probe: EX3DV4 - SN7612; ConvF(10.57, 10.57, 10.57); Calibrated: 2022/1/27
- Sensor-Surface: 2mm (Mechanical Surface Detection)
- Electronics: DAE4 Sn1633; Calibrated: 2021/10/26
- Phantom: SAM (30deg probe tilt) with CRP v5.0; Type: QD000P40CD; Serial: TP:1781
- Measurement SW: DASY52, Version 52.10 (4); SEMCAD X Version 14.6.14 (7483)

- **Area Scan (81x131x1):** Interpolated grid: dx=1.500 mm, dy=1.500 mm
 Maximum value of SAR (interpolated) = 0.395 W/kg

- **Zoom Scan (5x5x7)/Cube 0:** Measurement grid: dx=8mm, dy=8mm, dz=5mm
 Reference Value = 20.92 V/m; Power Drift = -0.09 dB
 Peak SAR (extrapolated) = 0.461 W/kg
SAR(1 g) = 0.363 W/kg; SAR(10 g) = 0.277 W/kg
 Maximum value of SAR (measured) = 0.381 W/kg



0 dB = 0.381 W/kg

P18 GSM1900_GPRS 2TX slot_Rear Face_1cm_Ch512

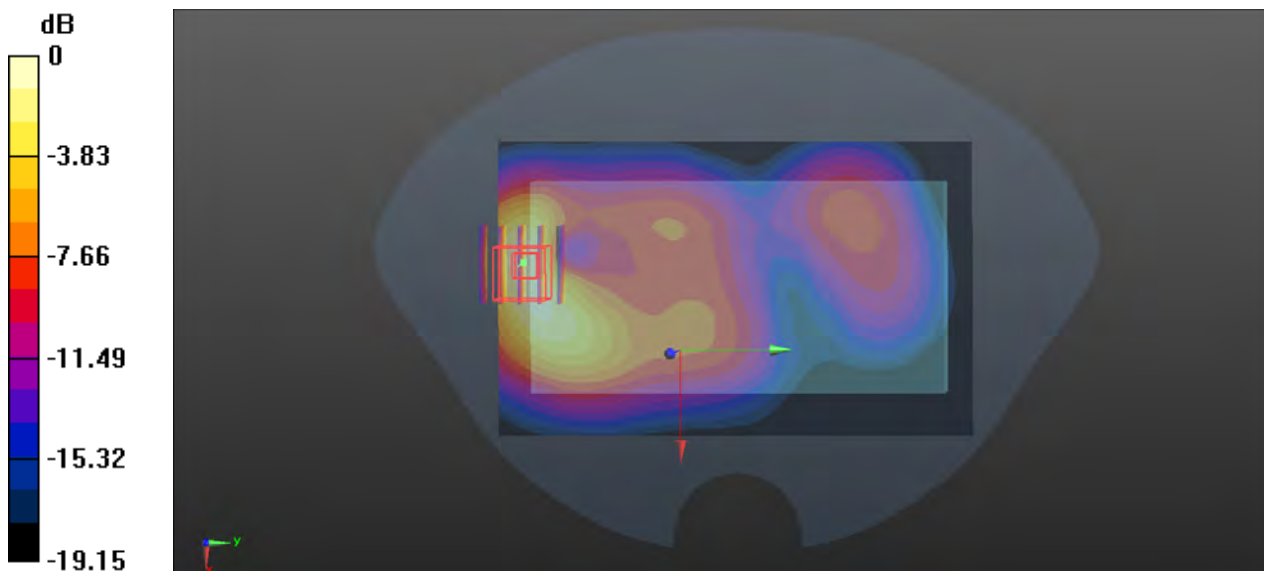
Communication System: GPRS 2Tx-slot; Frequency: 1850.2 MHz; Duty Cycle: 1:4.15
Medium: HSL1900_1008 Medium parameters used: $f = 1850.2$ MHz; $\sigma = 1.381$ S/m; $\epsilon_r = 39.597$; $\rho = 1000$ kg/m³
Ambient Temperature : 23.2°C; Liquid Temperature : 22.5°C

DASY5 Configuration:

- Probe: EX3DV4 - SN7612; ConvF(8.73, 8.73, 8.73); Calibrated: 2022/1/27
- Sensor-Surface: 2mm (Mechanical Surface Detection)
- Electronics: DAE4 Sn1633; Calibrated: 2021/10/26
- Phantom: SAM (30deg probe tilt) with CRP v5.0; Type: QD000P40CD; Serial: TP:1781
- Measurement SW: DASY52, Version 52.10 (4); SEMCAD X Version 14.6.14 (7483)

- **Area Scan (81x131x1):** Interpolated grid: dx=1.500 mm, dy=1.500 mm
Maximum value of SAR (interpolated) = 0.591 W/kg

- **Zoom Scan (5x5x7)/Cube 0:** Measurement grid: dx=8mm, dy=8mm, dz=5mm
Reference Value = 6.982 V/m; Power Drift = -0.16 dB
Peak SAR (extrapolated) = 0.986 W/kg
SAR(1 g) = 0.537 W/kg; SAR(10 g) = 0.283 W/kg
Maximum value of SAR (measured) = 0.608 W/kg



0 dB = 0.608 W/kg

P19 WCDMA II_RMC12.2K_Front Face_1.3cm_Ch9400

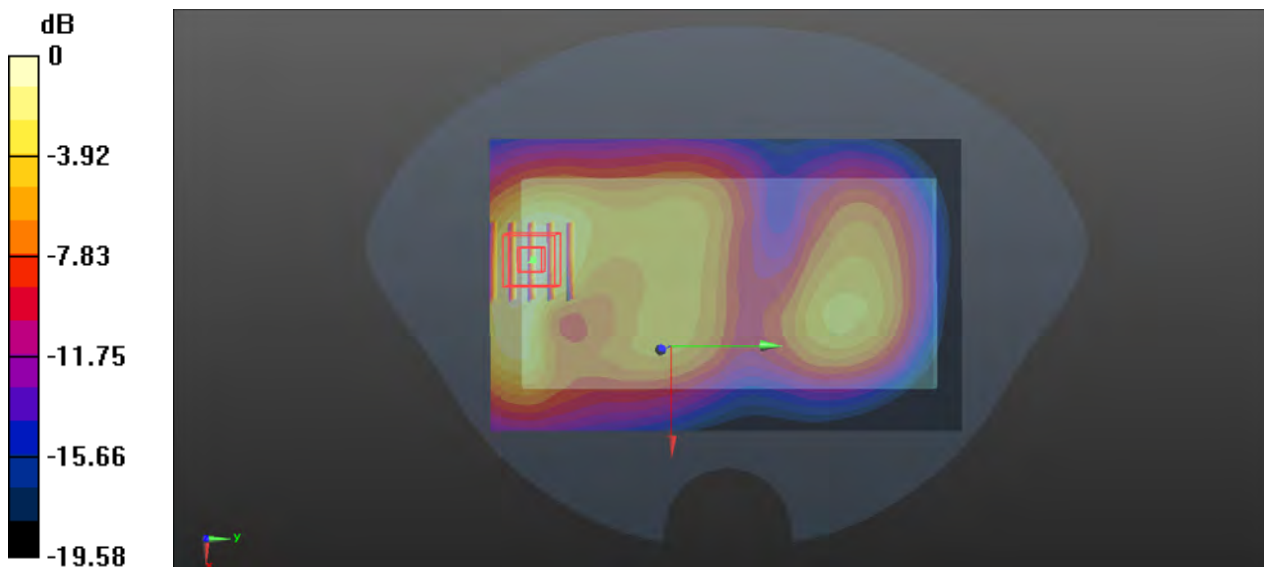
Communication System: WCDMA; Frequency: 1880 MHz; Duty Cycle: 1:1
Medium: HSL1900_1008 Medium parameters used: $f = 1880$ MHz; $\sigma = 1.398$ S/m; $\epsilon_r = 39.527$; $\rho = 1000$ kg/m³
Ambient Temperature : 23.2°C; Liquid Temperature : 22.5°C

DASY5 Configuration:

- Probe: EX3DV4 - SN7612; ConvF(8.73, 8.73, 8.73); Calibrated: 2022/1/27
- Sensor-Surface: 2mm (Mechanical Surface Detection)
- Electronics: DAE4 Sn1633; Calibrated: 2021/10/26
- Phantom: SAM (30deg probe tilt) with CRP v5.0; Type: QD000P40CD; Serial: TP:1781
- Measurement SW: DASY52, Version 52.10 (4); SEMCAD X Version 14.6.14 (7483)

- **Area Scan (81x131x1)**: Interpolated grid: dx=1.500 mm, dy=1.500 mm
Maximum value of SAR (interpolated) = 0.521 W/kg

- **Zoom Scan (5x5x7)/Cube 0**: Measurement grid: dx=8mm, dy=8mm, dz=5mm
Reference Value = 8.387 V/m; Power Drift = 0.14 dB
Peak SAR (extrapolated) = 0.788 W/kg
SAR(1 g) = 0.470 W/kg; SAR(10 g) = 0.273 W/kg
Maximum value of SAR (measured) = 0.511 W/kg



0 dB = 0.511 W/kg

P20 WCDMA IV_RMC12.2K_Front Face_1.3cm_Ch1312

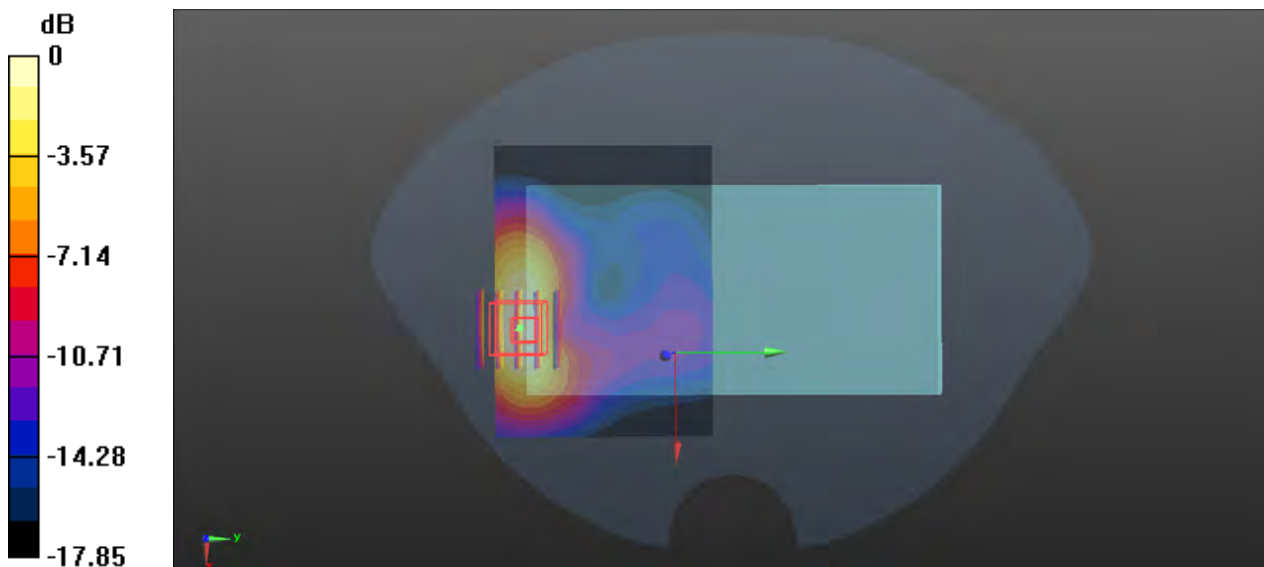
Communication System: WCDMA; Frequency: 1712.4 MHz; Duty Cycle: 1:1
Medium: HSL1750_1008 Medium parameters used: $f = 1712.4$ MHz; $\sigma = 1.318$ S/m; $\epsilon_r = 39.782$; $\rho = 1000$ kg/m³
Ambient Temperature : 23.4°C; Liquid Temperature : 22.6°C

DASY5 Configuration:

- Probe: EX3DV4 - SN7612; ConvF(8.9, 8.9, 8.9); Calibrated: 2022/1/27
- Sensor-Surface: 2mm (Mechanical Surface Detection)
- Electronics: DAE4 Sn1633; Calibrated: 2021/10/26
- Phantom: SAM (30deg probe tilt) with CRP v5.0; Type: QD000P40CD; Serial: TP:1781
- Measurement SW: DASY52, Version 52.10 (4); SEMCAD X Version 14.6.14 (7483)

- **Area Scan (81x61x1):** Interpolated grid: dx=1.500 mm, dy=1.500 mm
Maximum value of SAR (interpolated) = 1.16 W/kg

- **Zoom Scan (5x5x7)/Cube 0:** Measurement grid: dx=8mm, dy=8mm, dz=5mm
Reference Value = 5.307 V/m; Power Drift = -0.08 dB
Peak SAR (extrapolated) = 1.74 W/kg
SAR(1 g) = 0.811 W/kg; SAR(10 g) = 0.540 W/kg
Maximum value of SAR (measured) = 1.07 W/kg



0 dB = 1.07 W/kg

P21 WCDMA V_RMC12.2K_Rear Face_1cm_Ch4182

Communication System: WCDMA; Frequency: 836.4 MHz; Duty Cycle: 1:1

Medium: HSL835_1008 Medium parameters used: $f = 836.4$ MHz; $\sigma = 0.914$ S/m; $\epsilon_r = 42.068$; $\rho = 1000$ kg/m³

Ambient Temperature : 23.3°C; Liquid Temperature : 22.5°C

DASY5 Configuration:

- Probe: EX3DV4 - SN7612; ConvF(10.57, 10.57, 10.57); Calibrated: 2022/1/27
- Sensor-Surface: 2mm (Mechanical Surface Detection)
- Electronics: DAE4 Sn1633; Calibrated: 2021/10/26
- Phantom: SAM (30deg probe tilt) with CRP v5.0; Type: QD000P40CD; Serial: TP:1781
- Measurement SW: DASY52, Version 52.10 (4); SEMCAD X Version 14.6.14 (7483)

- **Area Scan (81x131x1):** Interpolated grid: dx=1.500 mm, dy=1.500 mm

Maximum value of SAR (interpolated) = 0.334 W/kg

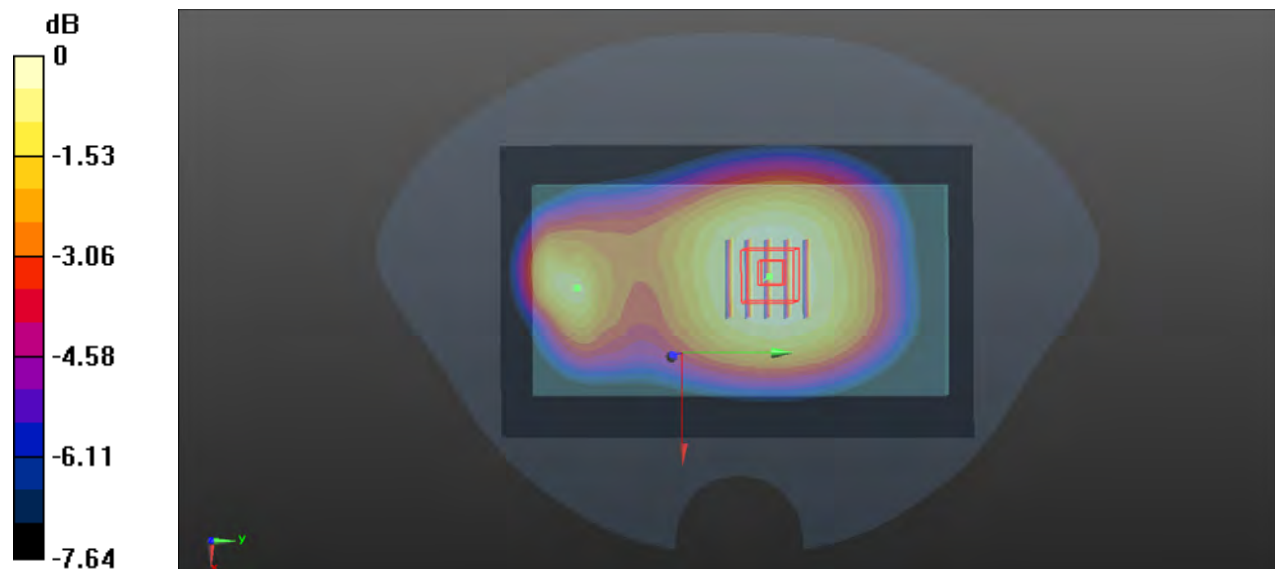
- **Zoom Scan (5x5x7)/Cube 0:** Measurement grid: dx=8mm, dy=8mm, dz=5mm

Reference Value = 18.45 V/m; Power Drift = 0.09 dB

Peak SAR (extrapolated) = 0.398 W/kg

SAR(1 g) = 0.318 W/kg; SAR(10 g) = 0.243 W/kg

Maximum value of SAR (measured) = 0.333 W/kg



0 dB = 0.333 W/kg

P22 LTE 2_QPSK20M_Rear Face_1cm_Ch18700_1RB_OS99

Communication System: LTE; Frequency: 1860 MHz; Duty Cycle: 1:1

Medium: HSL1900_1008 Medium parameters used: $f = 1860$ MHz; $\sigma = 1.385$ S/m; $\epsilon_r = 39.569$; $\rho = 1000$ kg/m³

Ambient Temperature : 23.2°C; Liquid Temperature : 22.5°C

DASY5 Configuration:

- Probe: EX3DV4 - SN7612; ConvF(8.73, 8.73, 8.73); Calibrated: 2022/1/27
- Sensor-Surface: 2mm (Mechanical Surface Detection)
- Electronics: DAE4 Sn1633; Calibrated: 2021/10/26
- Phantom: SAM (30deg probe tilt) with CRP v5.0; Type: QD000P40CD; Serial: TP:1781
- Measurement SW: DASY52, Version 52.10 (4); SEMCAD X Version 14.6.14 (7483)

- **Area Scan (81x61x1):** Interpolated grid: dx=1.500 mm, dy=1.500 mm

Maximum value of SAR (interpolated) = 0.866 W/kg

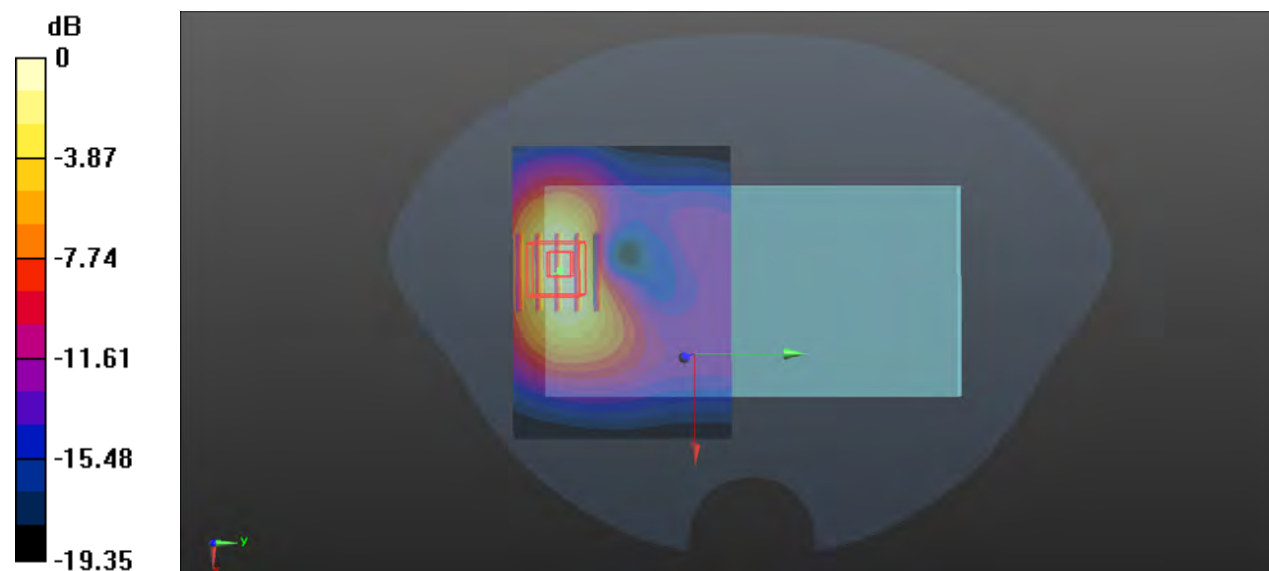
- **Zoom Scan (5x5x7)/Cube 0:** Measurement grid: dx=8mm, dy=8mm, dz=5mm

Reference Value = 5.793 V/m; Power Drift = 0.12 dB

Peak SAR (extrapolated) = 1.37 W/kg

SAR(1 g) = 0.771 W/kg; SAR(10 g) = 0.417 W/kg

Maximum value of SAR (measured) = 0.847 W/kg



0 dB = 0.847 W/kg

P23 LTE 5_QPSK10M_Rear Face_1cm_Ch20450_1RB_OS0

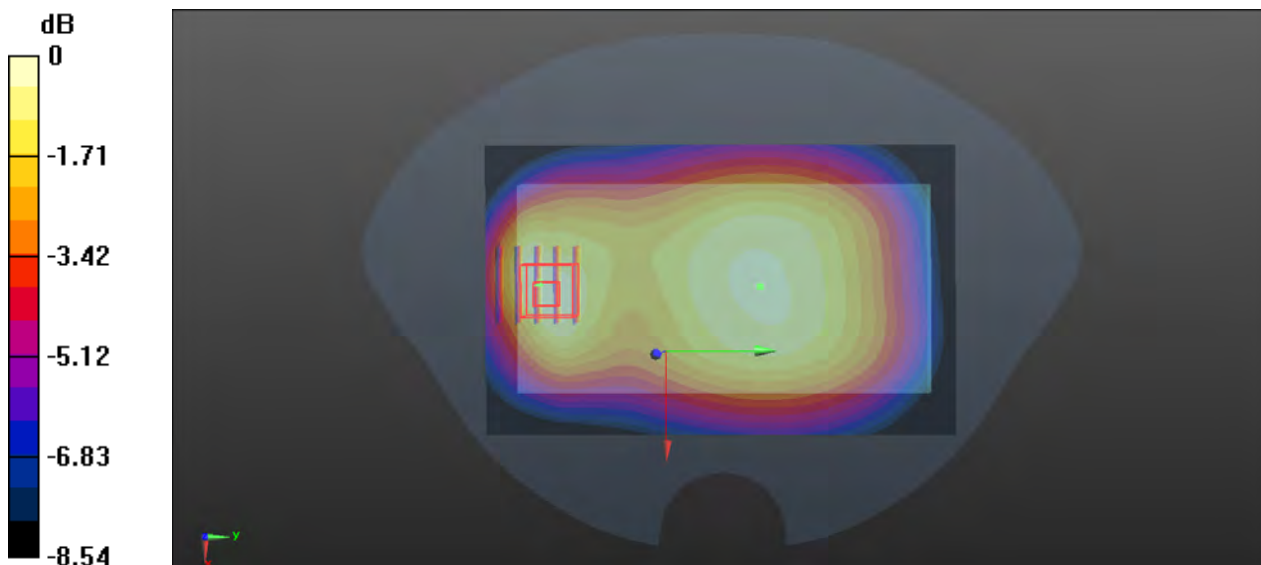
Communication System: LTE; Frequency: 829 MHz; Duty Cycle: 1:1
Medium: HSL835_1008 Medium parameters used: $f = 829 \text{ MHz}$; $\sigma = 0.912 \text{ S/m}$; $\epsilon_r = 42.09$; $\rho = 1000 \text{ kg/m}^3$
Ambient Temperature : 23.3°C ; Liquid Temperature : 22.5°C

DASY5 Configuration:

- Probe: EX3DV4 - SN7612; ConvF(10.57, 10.57, 10.57); Calibrated: 2022/1/27
- Sensor-Surface: 2mm (Mechanical Surface Detection)
- Electronics: DAE4 Sn1633; Calibrated: 2021/10/26
- Phantom: SAM (30deg probe tilt) with CRP v5.0; Type: QD000P40CD; Serial: TP:1781
- Measurement SW: DASY52, Version 52.10 (4); SEMCAD X Version 14.6.14 (7483)

- **Area Scan (81x61x1):** Interpolated grid: $dx=1.500 \text{ mm}$, $dy=1.500 \text{ mm}$
Maximum value of SAR (interpolated) = 0.312 W/kg

- **Zoom Scan (5x5x7)/Cube 0:** Measurement grid: $dx=8\text{mm}$, $dy=8\text{mm}$, $dz=5\text{mm}$
Reference Value = 19.26 V/m ; Power Drift = 0.03 dB
Peak SAR (extrapolated) = 0.403 W/kg
SAR(1 g) = 0.319 W/kg ; SAR(10 g) = 0.241 W/kg
Maximum value of SAR (measured) = 0.331 W/kg



0 dB = 0.331 W/kg

P24 LTE 7_QPSK20M_Front Face_1.3cm_Ch21100_1RB_OS0

Communication System: LTE; Frequency: 2535 MHz; Duty Cycle: 1:1

Medium: HSL2600_1009 Medium parameters used: $f = 2535$ MHz; $\sigma = 1.844$ S/m; $\epsilon_r = 39.349$; $\rho = 1000$ kg/m³

Ambient Temperature : 23.5°C; Liquid Temperature : 22.6°C

DASY5 Configuration:

- Probe: EX3DV4 - SN7612; ConvF(7.7, 7.7, 7.7); Calibrated: 2022/1/27
- Sensor-Surface: 2mm (Mechanical Surface Detection)
- Electronics: DAE4 Sn1633; Calibrated: 2021/10/26
- Phantom: SAM (30deg probe tilt) with CRP v5.0; Type: QD000P40CD; Serial: TP:1781
- Measurement SW: DASY52, Version 52.10 (4); SEMCAD X Version 14.6.14 (7483)

- **Area Scan (101x81x1):** Interpolated grid: dx=1.200 mm, dy=1.200 mm

Maximum value of SAR (interpolated) = 0.311 W/kg

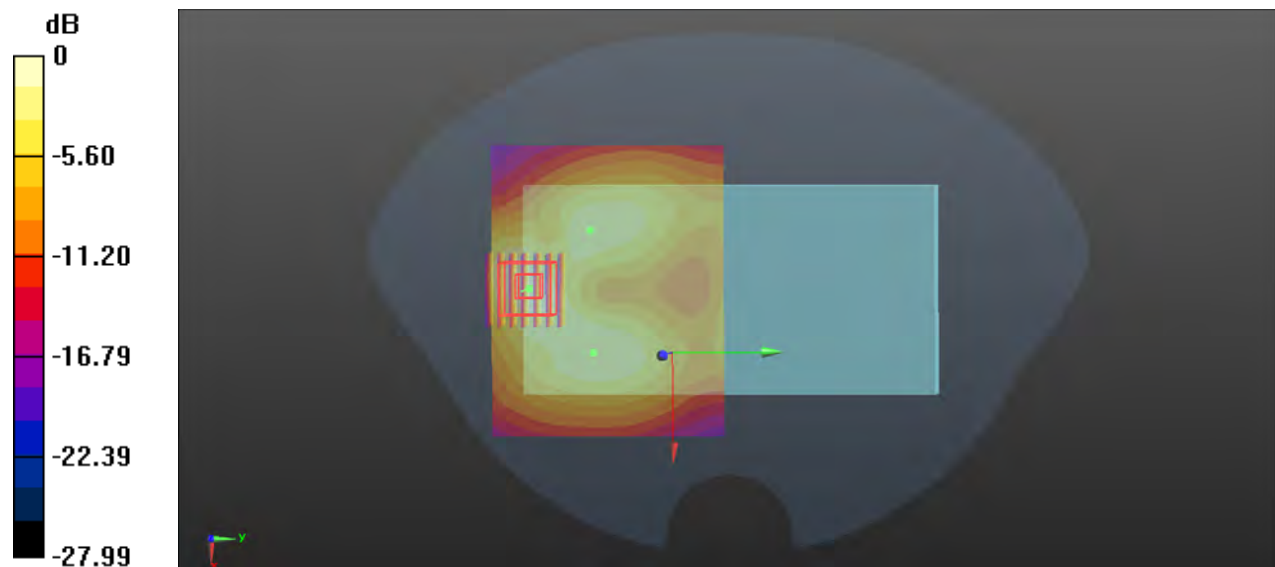
- **Zoom Scan (7x7x7)/Cube 0:** Measurement grid: dx=5mm, dy=5mm, dz=5mm

Reference Value = 5.977 V/m; Power Drift = 0.04 dB

Peak SAR (extrapolated) = 0.576 W/kg

SAR(1 g) = 0.285 W/kg; SAR(10 g) = 0.140 W/kg

Maximum value of SAR (measured) = 0.317 W/kg



0 dB = 0.317 W/kg

P25 LTE 12_QPSK10M_Rear Face_1cm_Ch23095_1RB_OS0

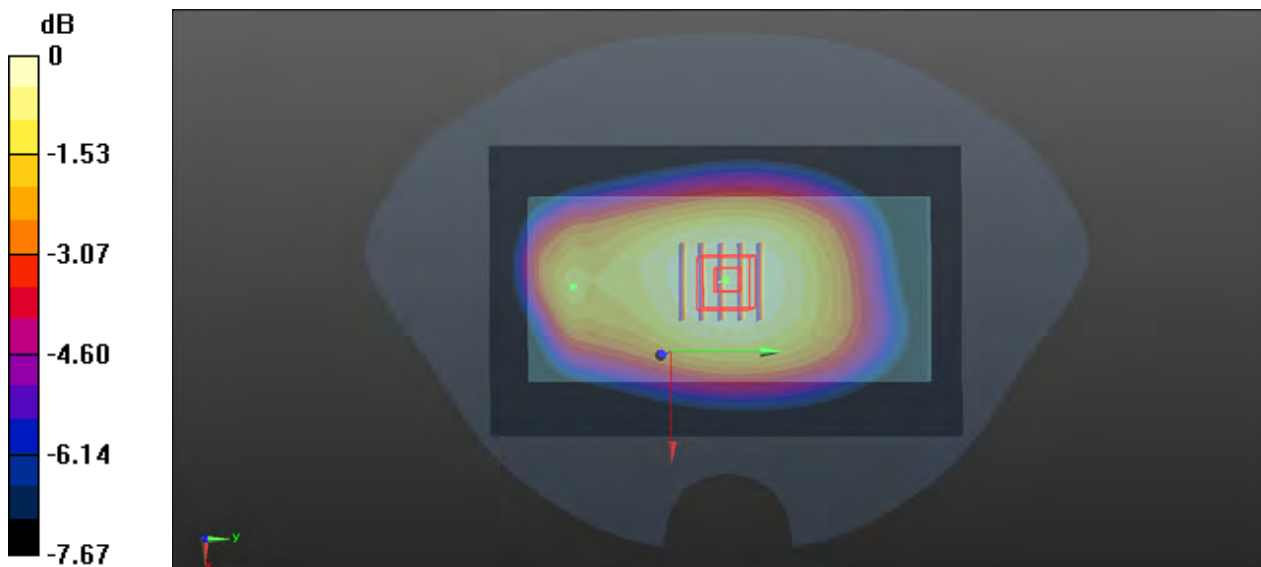
Communication System: LTE; Frequency: 707.5 MHz; Duty Cycle: 1:1
Medium: HSL750_1008 Medium parameters used: $f = 707.5$ MHz; $\sigma = 0.876$ S/m; $\epsilon_r = 43.539$; $\rho = 1000$ kg/m³
Ambient Temperature : 23.3°C; Liquid Temperature : 22.6°C

DASY5 Configuration:

- Probe: EX3DV4 - SN7612; ConvF(11.02, 11.02, 11.02); Calibrated: 2022/1/27
- Sensor-Surface: 2mm (Mechanical Surface Detection)
- Electronics: DAE4 Sn1633; Calibrated: 2021/10/26
- Phantom: SAM (30deg probe tilt) with CRP v5.0; Type: QD000P40CD; Serial: TP:1781
- Measurement SW: DASY52, Version 52.10 (4); SEMCAD X Version 14.6.14 (7483)

- **Area Scan (81x61x1):** Interpolated grid: dx=1.500 mm, dy=1.500 mm
Maximum value of SAR (interpolated) = 0.297 W/kg

- **Zoom Scan (5x5x7)/Cube 0:** Measurement grid: dx=8mm, dy=8mm, dz=5mm
Reference Value = 18.70 V/m; Power Drift = 0.04 dB
Peak SAR (extrapolated) = 0.358 W/kg
SAR(1 g) = 0.288 W/kg; SAR(10 g) = 0.223 W/kg
Maximum value of SAR (measured) = 0.301 W/kg



0 dB = 0.301 W/kg

P26 LTE 13_QPSK10M_Rear Face_1cm_Ch23230_1RB_OS0

Communication System: LTE; Frequency: 782 MHz; Duty Cycle: 1:1

Medium: HSL750_1008 Medium parameters used: $f = 782 \text{ MHz}$; $\sigma = 0.902 \text{ S/m}$; $\epsilon_r = 43.351$; $\rho = 1000 \text{ kg/m}^3$

Ambient Temperature : 23.3°C ; Liquid Temperature : 22.6°C

DASY5 Configuration:

- Probe: EX3DV4 - SN7612; ConvF(11.02, 11.02, 11.02); Calibrated: 2022/1/27
- Sensor-Surface: 2mm (Mechanical Surface Detection)
- Electronics: DAE4 Sn1633; Calibrated: 2021/10/26
- Phantom: SAM (30deg probe tilt) with CRP v5.0; Type: QD000P40CD; Serial: TP:1781
- Measurement SW: DASY52, Version 52.10 (4); SEMCAD X Version 14.6.14 (7483)

- **Area Scan (81x61x1):** Interpolated grid: $dx=1.500 \text{ mm}$, $dy=1.500 \text{ mm}$

Maximum value of SAR (interpolated) = 0.418 W/kg

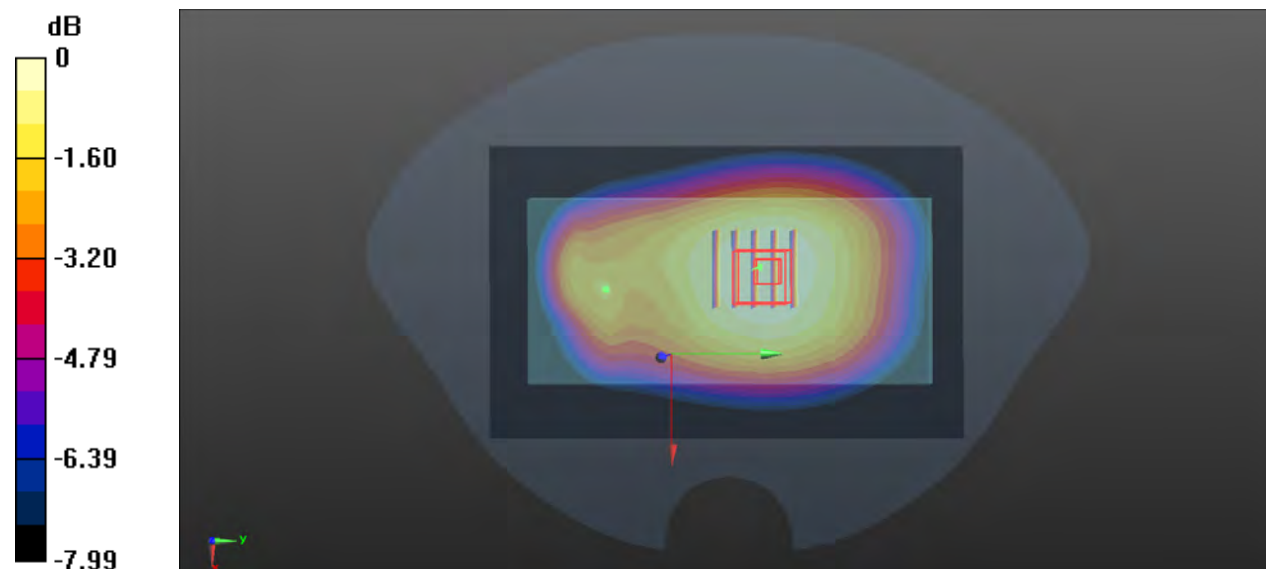
- **Zoom Scan (5x5x7)/Cube 0:** Measurement grid: $dx=8\text{mm}$, $dy=8\text{mm}$, $dz=5\text{mm}$

Reference Value = 21.81 V/m ; Power Drift = 0.06 dB

Peak SAR (extrapolated) = 0.501 W/kg

SAR(1 g) = 0.402 W/kg ; SAR(10 g) = 0.310 W/kg

Maximum value of SAR (measured) = 0.418 W/kg



0 dB = 0.418 W/kg

P27 LTE 66_QPSK20M_Front Face_1.3cm_Ch132072_1RB_OS0

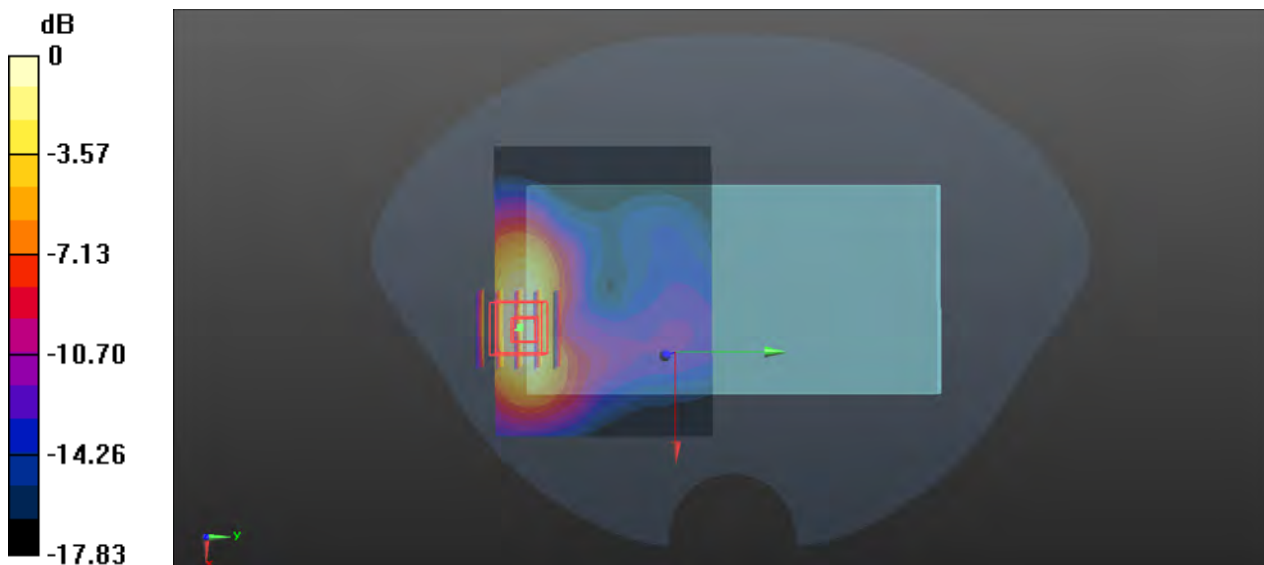
Communication System: LTE; Frequency: 1720 MHz; Duty Cycle: 1:1
Medium: HSL1750_1008 Medium parameters used: $f = 1720$ MHz; $\sigma = 1.319$ S/m; $\epsilon_r = 39.764$; $\rho = 1000$ kg/m³
Ambient Temperature : 23.4°C; Liquid Temperature : 22.6°C

DASY5 Configuration:

- Probe: EX3DV4 - SN7612; ConvF(8.9, 8.9, 8.9); Calibrated: 2022/1/27
- Sensor-Surface: 2mm (Mechanical Surface Detection)
- Electronics: DAE4 Sn1633; Calibrated: 2021/10/26
- Phantom: SAM (30deg probe tilt) with CRP v5.0; Type: QD000P40CD; Serial: TP:1781
- Measurement SW: DASY52, Version 52.10 (4); SEMCAD X Version 14.6.14 (7483)

- **Area Scan (81x61x1):** Interpolated grid: dx=1.500 mm, dy=1.500 mm
Maximum value of SAR (interpolated) = 1.15 W/kg

- **Zoom Scan (5x5x7)/Cube 0:** Measurement grid: dx=8mm, dy=8mm, dz=5mm
Reference Value = 5.083 V/m; Power Drift = 0.16 dB
Peak SAR (extrapolated) = 1.71 W/kg
SAR(1 g) = 0.918 W/kg; SAR(10 g) = 0.534 W/kg
Maximum value of SAR (measured) = 1.06 W/kg



0 dB = 1.06 W/kg

P28 WLAN2.4G_802.11b_Rear Face_1cm_Ch1

Communication System: 802.11b; Frequency: 2412 MHz; Duty Cycle: 1:1

Medium: HSL2450_1009 Medium parameters used: $f = 2412$ MHz; $\sigma = 1.761$ S/m; $\epsilon_r = 39.505$; $\rho = 1000$ kg/m³

Ambient Temperature : 23.5°C; Liquid Temperature : 22.5°C

DASY5 Configuration:

- Probe: EX3DV4 - SN7612; ConvF(7.9, 7.9, 7.9); Calibrated: 2022/1/27
- Sensor-Surface: 2mm (Mechanical Surface Detection)
- Electronics: DAE4 Sn1633; Calibrated: 2021/10/26
- Phantom: SAM (30deg probe tilt) with CRP v5.0; Type: QD000P40CD; Serial: TP:1781
- Measurement SW: DASY52, Version 52.10 (4); SEMCAD X Version 14.6.14 (7483)

- **Area Scan (81x161x1):** Interpolated grid: dx=1.200 mm, dy=1.200 mm

Maximum value of SAR (interpolated) = 0.459 W/kg

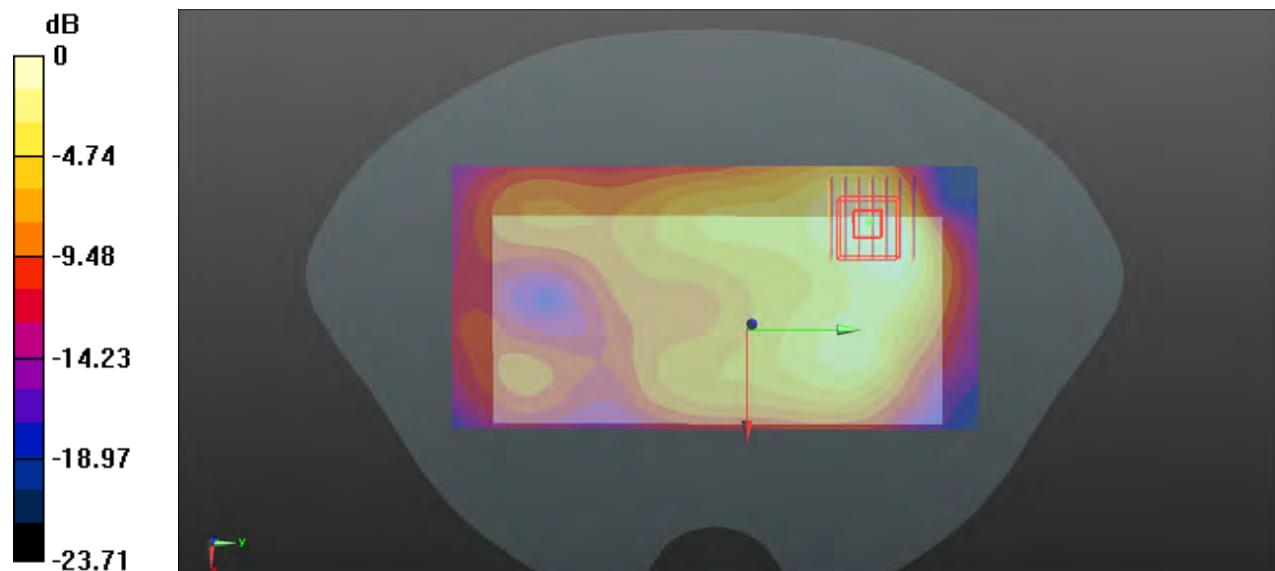
- **Zoom Scan (7x7x7)/Cube 0:** Measurement grid: dx=5mm, dy=5mm, dz=5mm

Reference Value = 5.335 V/m; Power Drift = 0.07 dB

Peak SAR (extrapolated) = 0.543 W/kg

SAR(1 g) = 0.267 W/kg; SAR(10 g) = 0.140 W/kg

Maximum value of SAR (measured) = 0.431 W/kg



0 dB = 0.431 W/kg

P29 WLAN5G_802.11a_Rear Face_1cm_Ch64

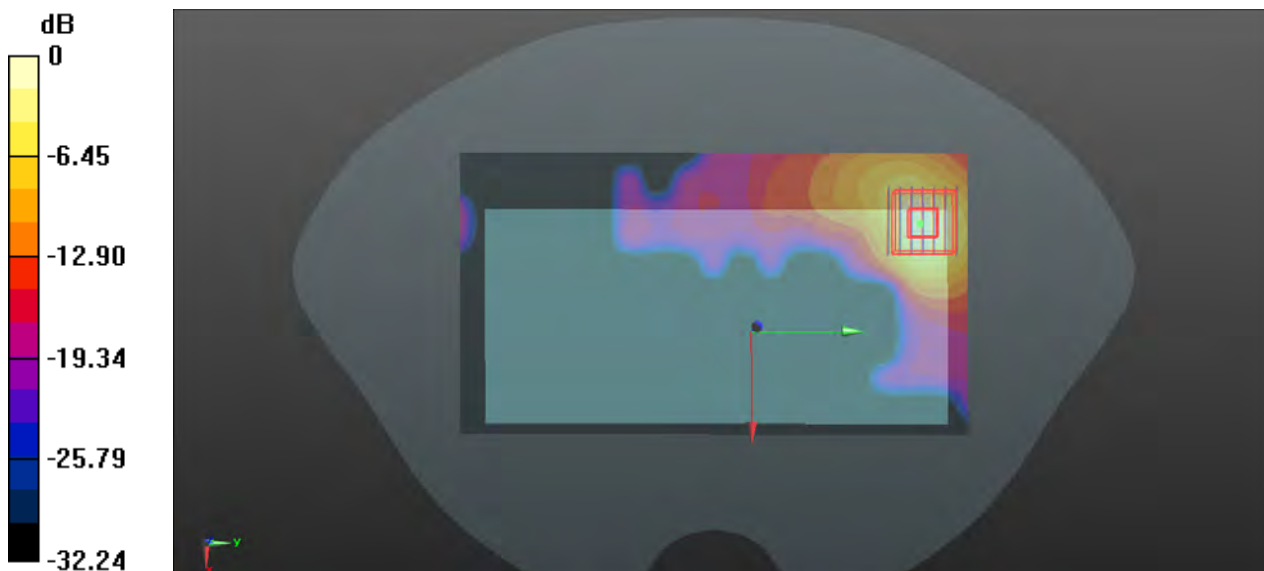
Communication System: 802.11a; Frequency: 5320 MHz; Duty Cycle: 1:1.12
Medium: HSL5G_1012 Medium parameters used: $f = 5320$ MHz; $\sigma = 4.668$ S/m; $\epsilon_r = 35.988$; $\rho = 1000$ kg/m³
Ambient Temperature : 23.5°C; Liquid Temperature : 22.6°C

DASY5 Configuration:

- Probe: EX3DV4 - SN7612; ConvF(5.54, 5.54, 5.54); Calibrated: 2022/1/27
- Sensor-Surface: 2mm (Mechanical Surface Detection)
- Electronics: DAE4 Sn1633; Calibrated: 2021/10/26
- Phantom: SAM (30deg probe tilt) with CRP v5.0; Type: QD000P40CD; Serial: TP:1781
- Measurement SW: DASY52, Version 52.10 (4); SEMCAD X Version 14.6.14 (7483)

- **Area Scan (101x181x1)**: Interpolated grid: dx=1.000 mm, dy=1.000 mm
Maximum value of SAR (interpolated) = 1.52 W/kg

- **Zoom Scan (7x7x12)/Cube 0**: Measurement grid: dx=4mm, dy=4mm, dz=2mm
Reference Value = 0 V/m; Power Drift = 0.00 dB
Peak SAR (extrapolated) = 2.44 W/kg
SAR(1 g) = 0.645 W/kg; SAR(10 g) = 0.214 W/kg
Maximum value of SAR (measured) = 1.51 W/kg



0 dB = 1.51 W/kg

P30 WLAN5G_802.11a_Rear Face_1cm_Ch140

Communication System: 802.11a; Frequency: 5700 MHz; Duty Cycle: 1:1.12

Medium: HSL5G_1010 Medium parameters used: $f = 5700$ MHz; $\sigma = 5.119$ S/m; $\epsilon_r = 35.531$; $\rho = 1000$ kg/m³

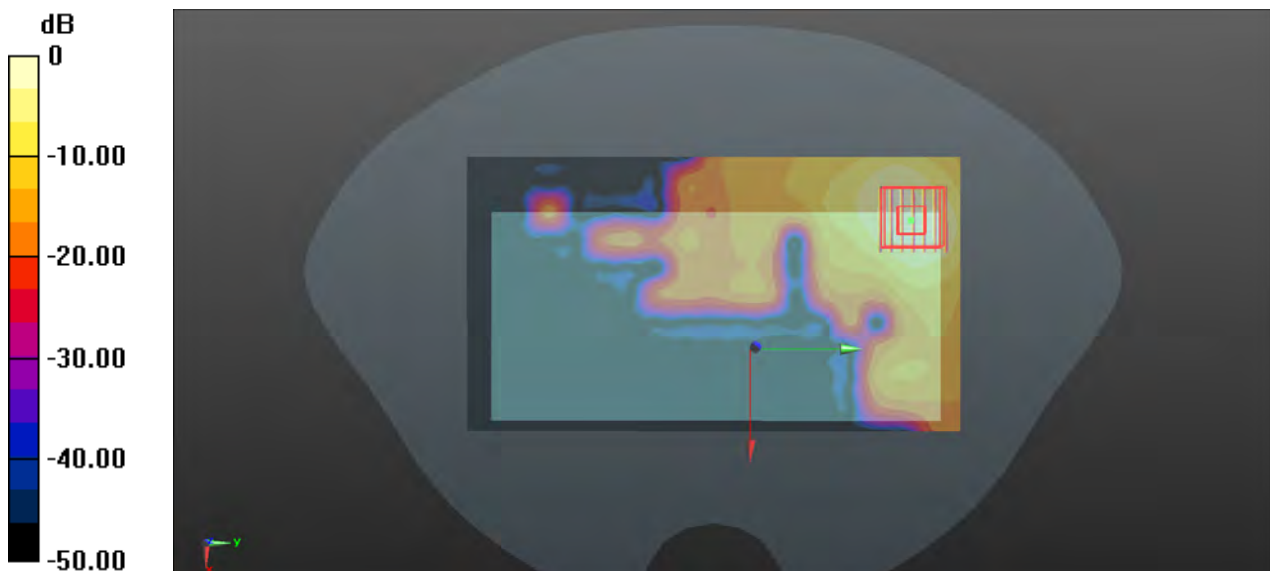
Ambient Temperature : 23.5°C; Liquid Temperature : 22.7°C

DASY5 Configuration:

- Probe: EX3DV4 - SN7612; ConvF(5.11, 5.11, 5.11); Calibrated: 2022/1/27
- Sensor-Surface: 2mm (Mechanical Surface Detection)
- Electronics: DAE4 Sn1633; Calibrated: 2021/10/26
- Phantom: SAM (30deg probe tilt) with CRP v5.0; Type: QD000P40CD; Serial: TP:1781
- Measurement SW: DASY52, Version 52.10 (4); SEMCAD X Version 14.6.14 (7483)

- **Area Scan (101x181x1)**: Interpolated grid: dx=1.000 mm, dy=1.000 mm
Maximum value of SAR (interpolated) = 1.48 W/kg

- **Zoom Scan (7x7x12)/Cube 0**: Measurement grid: dx=4mm, dy=4mm, dz=2mm
Reference Value = 0.9990 V/m; Power Drift = 0.09 dB
Peak SAR (extrapolated) = 2.50 W/kg
SAR(1 g) = 0.624 W/kg; SAR(10 g) = 0.215 W/kg
Maximum value of SAR (measured) = 1.49 W/kg



0 dB = 1.49 W/kg

P31 WLAN5G_802.11a_Rear Face_1cm_Ch165

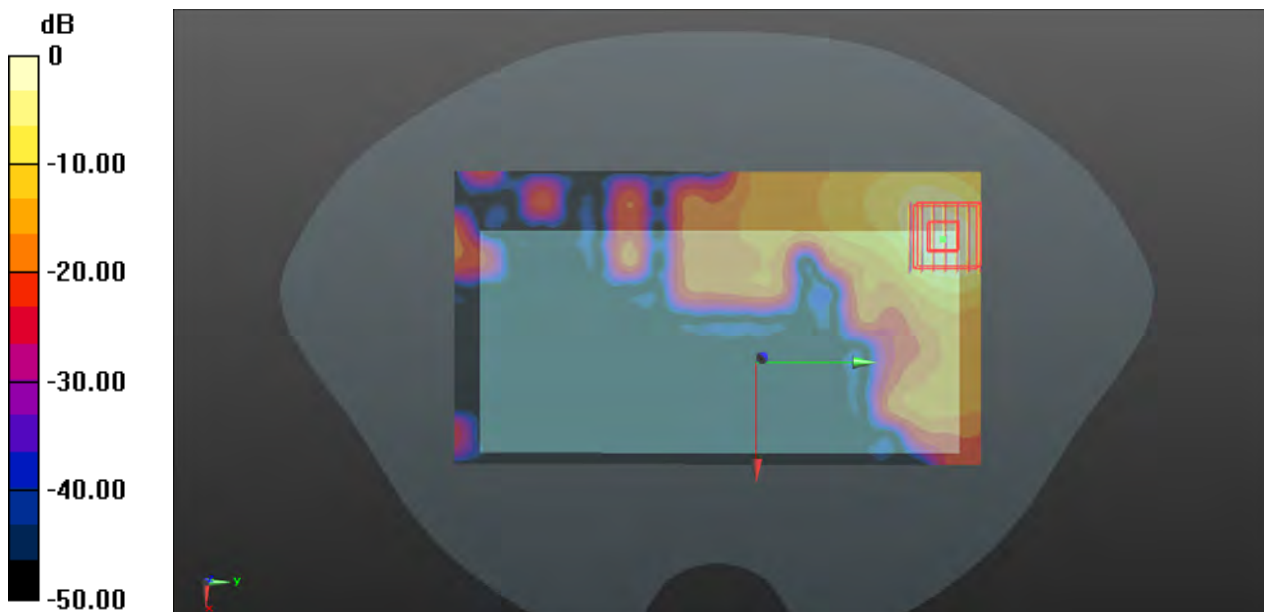
Communication System: 802.11a; Frequency: 5825 MHz; Duty Cycle: 1:1.11
Medium: HSL5G_1011 Medium parameters used: $f = 5825$ MHz; $\sigma = 5.216$ S/m; $\epsilon_r = 35.209$; $\rho = 1000$ kg/m³
Ambient Temperature : 23.4°C; Liquid Temperature : 22.6°C

DASY5 Configuration:

- Probe: EX3DV4 - SN7612; ConvF(5.2, 5.2, 5.2); Calibrated: 2022/1/27
- Sensor-Surface: 2mm (Mechanical Surface Detection)
- Electronics: DAE4 Sn1633; Calibrated: 2021/10/26
- Phantom: SAM (30deg probe tilt) with CRP v5.0; Type: QD000P40CD; Serial: TP:1781
- Measurement SW: DASY52, Version 52.10 (4); SEMCAD X Version 14.6.14 (7483)

- **Area Scan (101x181x1)**: Interpolated grid: dx=1.000 mm, dy=1.000 mm
Maximum value of SAR (interpolated) = 1.54 W/kg

- **Zoom Scan (7x7x12)/Cube 0**: Measurement grid: dx=4mm, dy=4mm, dz=2mm
Reference Value = 0.2520 V/m; Power Drift = -0.00 dB
Peak SAR (extrapolated) = 2.56 W/kg
SAR(1 g) = 0.637 W/kg; SAR(10 g) = 0.205 W/kg
Maximum value of SAR (measured) = 1.55 W/kg



0 dB = 1.55 W/kg

P32 BT_GFSK_Rear Face_1cm_Ch0

Communication System: BT; Frequency: 2402 MHz; Duty Cycle: 1:1.3

Medium: HSL2450_1009 Medium parameters used: $f = 2402$ MHz; $\sigma = 1.755$ S/m; $\epsilon_r = 39.515$; $\rho = 1000$ kg/m³

Ambient Temperature : 23.5°C; Liquid Temperature : 22.5°C

DASY5 Configuration:

- Probe: EX3DV4 - SN7612; ConvF(7.9, 7.9, 7.9); Calibrated: 2022/1/27
- Sensor-Surface: 2mm (Mechanical Surface Detection)
- Electronics: DAE4 Sn1633; Calibrated: 2021/10/26
- Phantom: SAM (30deg probe tilt) with CRP v5.0; Type: QD000P40CD; Serial: TP:1781
- Measurement SW: DASY52, Version 52.10 (4); SEMCAD X Version 14.6.14 (7483)

- **Area Scan (81x161x1):** Interpolated grid: dx=1.200 mm, dy=1.200 mm

Maximum value of SAR (interpolated) = 0.0245 W/kg

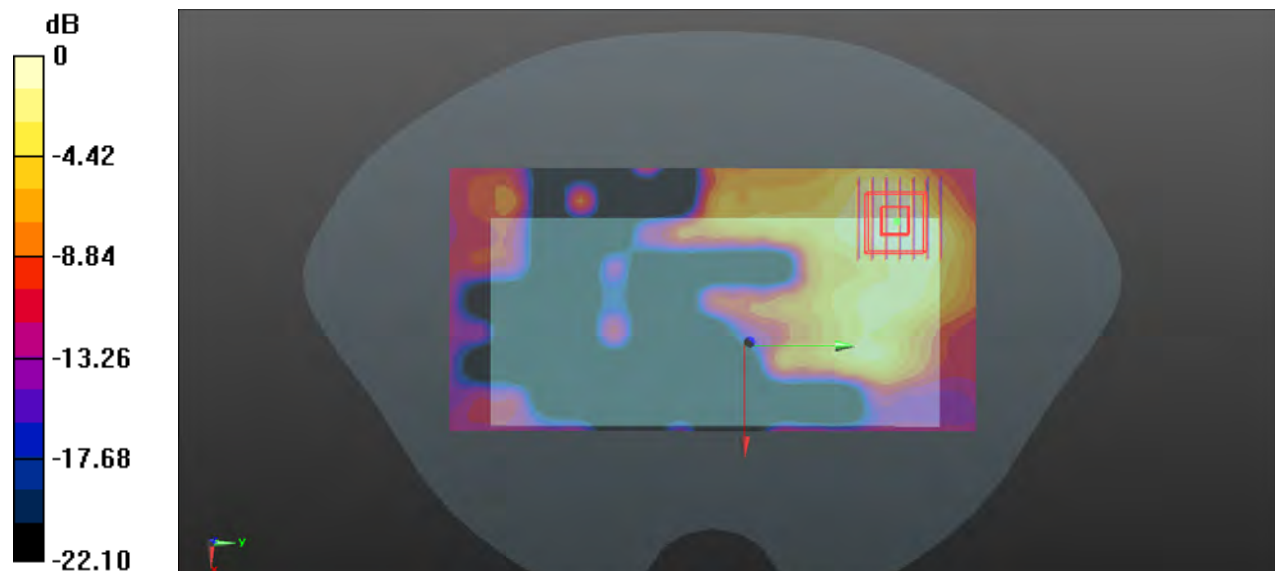
- **Zoom Scan (7x7x7)/Cube 0:** Measurement grid: dx=5mm, dy=5mm, dz=5mm

Reference Value = 0.6120 V/m; Power Drift = 0.03 dB

Peak SAR (extrapolated) = 0.0270 W/kg

SAR(1 g) = 0.013 W/kg; SAR(10 g) = 0.00624 W/kg

Maximum value of SAR (measured) = 0.0215 W/kg



0 dB = 0.0215 W/kg

P33 GSM850_GPRS 2TX slot_Rear Face_1cm_Ch128

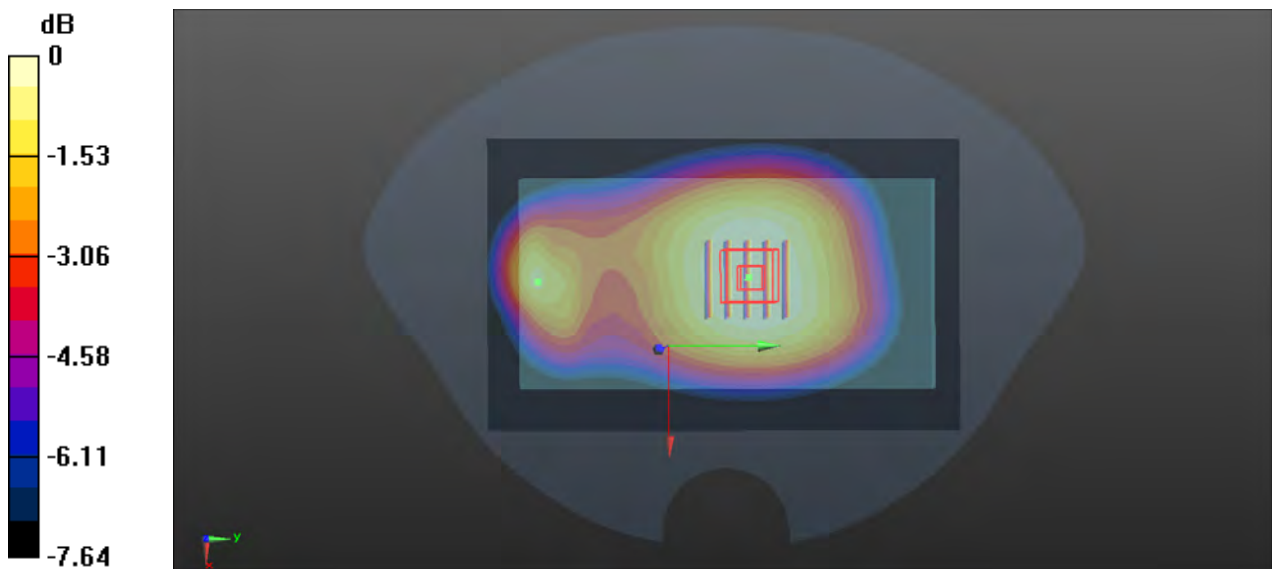
Communication System: GPRS 2Tx-slot; Frequency: 824.2 MHz; Duty Cycle: 1:4.15
 Medium: HSL835_1008 Medium parameters used: $f = 824.2$ MHz; $\sigma = 0.91$ S/m; $\epsilon_r = 42.102$; $\rho = 1000$ kg/m³
 Ambient Temperature : 23.3°C; Liquid Temperature : 22.5°C

DASY5 Configuration:

- Probe: EX3DV4 - SN7612; ConvF(10.57, 10.57, 10.57); Calibrated: 2022/1/27
- Sensor-Surface: 2mm (Mechanical Surface Detection)
- Electronics: DAE4 Sn1633; Calibrated: 2021/10/26
- Phantom: SAM (30deg probe tilt) with CRP v5.0; Type: QD000P40CD; Serial: TP:1781
- Measurement SW: DASY52, Version 52.10 (4); SEMCAD X Version 14.6.14 (7483)

- **Area Scan (81x131x1):** Interpolated grid: dx=1.500 mm, dy=1.500 mm
 Maximum value of SAR (interpolated) = 0.395 W/kg

- **Zoom Scan (5x5x7)/Cube 0:** Measurement grid: dx=8mm, dy=8mm, dz=5mm
 Reference Value = 20.92 V/m; Power Drift = -0.09 dB
 Peak SAR (extrapolated) = 0.461 W/kg
SAR(1 g) = 0.363 W/kg; SAR(10 g) = 0.277 W/kg
 Maximum value of SAR (measured) = 0.381 W/kg



0 dB = 0.381 W/kg

P34 GSM1900_GPRS 2TX slot_Rear Face_1cm_Ch512

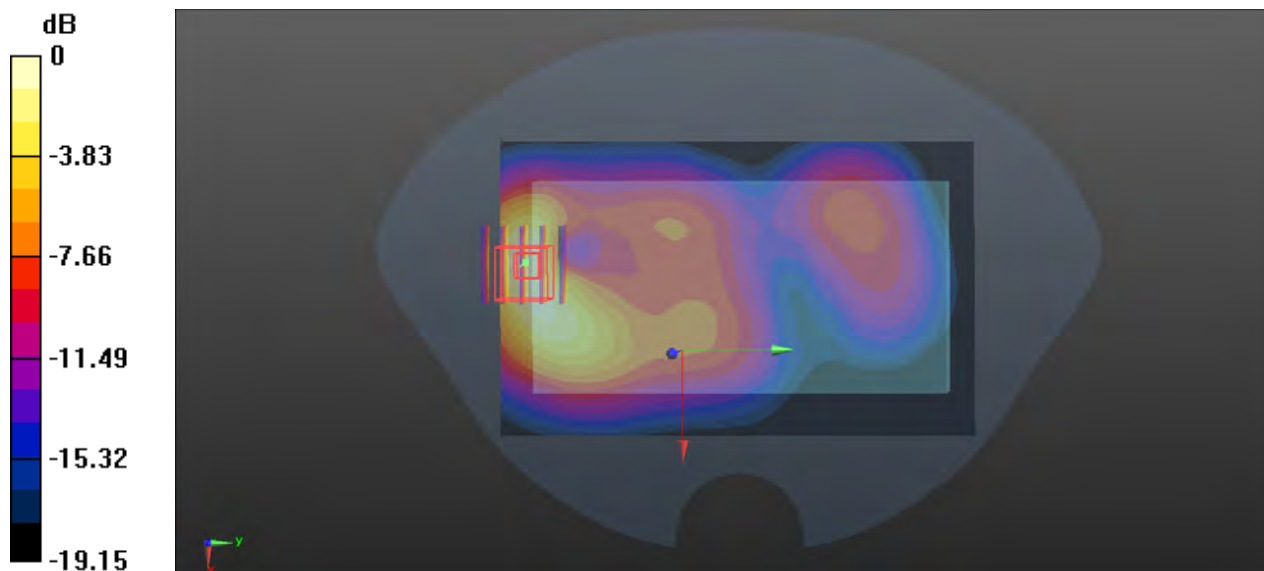
Communication System: GPRS 2Tx-slot; Frequency: 1850.2 MHz; Duty Cycle: 1:4.15
Medium: HSL1900_1008 Medium parameters used: $f = 1850.2$ MHz; $\sigma = 1.381$ S/m; $\epsilon_r = 39.597$; $\rho = 1000$ kg/m³
Ambient Temperature : 23.2°C; Liquid Temperature : 22.5°C

DASY5 Configuration:

- Probe: EX3DV4 - SN7612; ConvF(8.73, 8.73, 8.73); Calibrated: 2022/1/27
- Sensor-Surface: 2mm (Mechanical Surface Detection)
- Electronics: DAE4 Sn1633; Calibrated: 2021/10/26
- Phantom: SAM (30deg probe tilt) with CRP v5.0; Type: QD000P40CD; Serial: TP:1781
- Measurement SW: DASY52, Version 52.10 (4); SEMCAD X Version 14.6.14 (7483)

- **Area Scan (81x131x1)**: Interpolated grid: dx=1.500 mm, dy=1.500 mm
Maximum value of SAR (interpolated) = 0.591 W/kg

- **Zoom Scan (5x5x7)/Cube 0**: Measurement grid: dx=8mm, dy=8mm, dz=5mm
Reference Value = 6.982 V/m; Power Drift = -0.16 dB
Peak SAR (extrapolated) = 0.986 W/kg
SAR(1 g) = 0.537 W/kg; SAR(10 g) = 0.283 W/kg
Maximum value of SAR (measured) = 0.608 W/kg



0 dB = 0.608 W/kg

P35 WCDMA II_RMC12.2K_Bottom Side_1cm_Ch9400

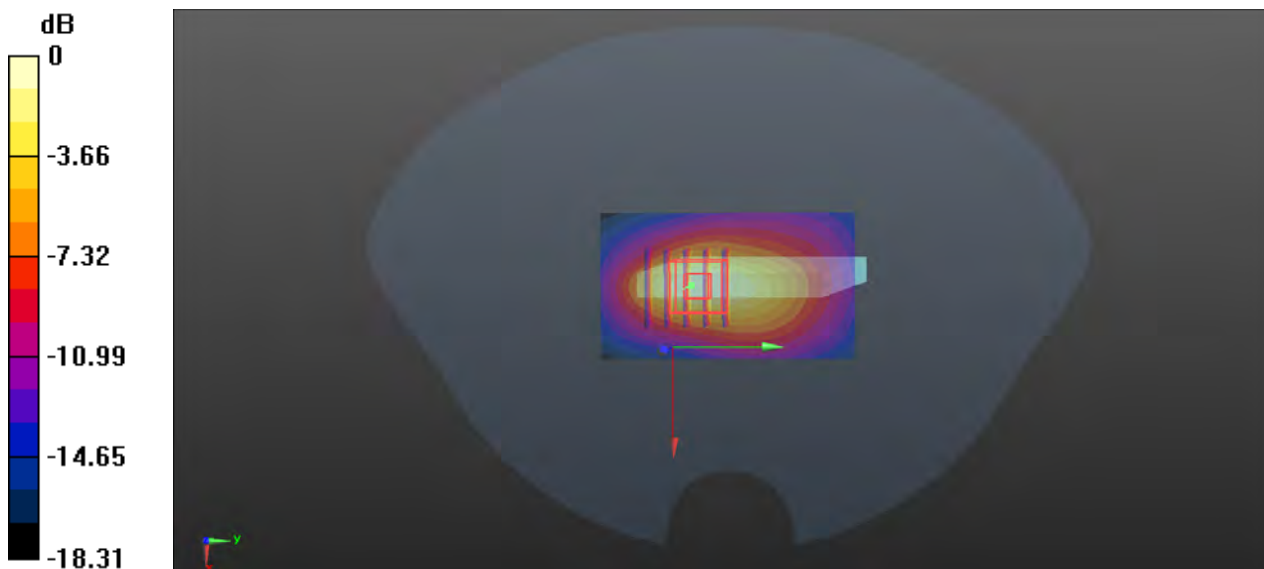
Communication System: WCDMA; Frequency: 1880 MHz; Duty Cycle: 1:1
Medium: HSL1900_1008 Medium parameters used: $f = 1880$ MHz; $\sigma = 1.398$ S/m; $\epsilon_r = 39.527$; $\rho = 1000$ kg/m³
Ambient Temperature : 23.2°C; Liquid Temperature : 22.5°C

DASY5 Configuration:

- Probe: EX3DV4 - SN7612; ConvF(8.73, 8.73, 8.73); Calibrated: 2022/1/27
- Sensor-Surface: 2mm (Mechanical Surface Detection)
- Electronics: DAE4 Sn1633; Calibrated: 2021/10/26
- Phantom: SAM (30deg probe tilt) with CRP v5.0; Type: QD000P40CD; Serial: TP:1781
- Measurement SW: DASY52, Version 52.10 (4); SEMCAD X Version 14.6.14 (7483)

- **Area Scan (41x71x1):** Interpolated grid: dx=1.500 mm, dy=1.500 mm
Maximum value of SAR (interpolated) = 0.870 W/kg

- **Zoom Scan (5x5x7)/Cube 0:** Measurement grid: dx=8mm, dy=8mm, dz=5mm
Reference Value = 23.21 V/m; Power Drift = 0.01 dB
Peak SAR (extrapolated) = 1.41 W/kg
SAR(1 g) = 0.794 W/kg; SAR(10 g) = 0.414 W/kg
Maximum value of SAR (measured) = 0.902 W/kg



0 dB = 0.902 W/kg

P36 WCDMA IV_RMC12.2K_Bottom Side_2cm_Ch1312

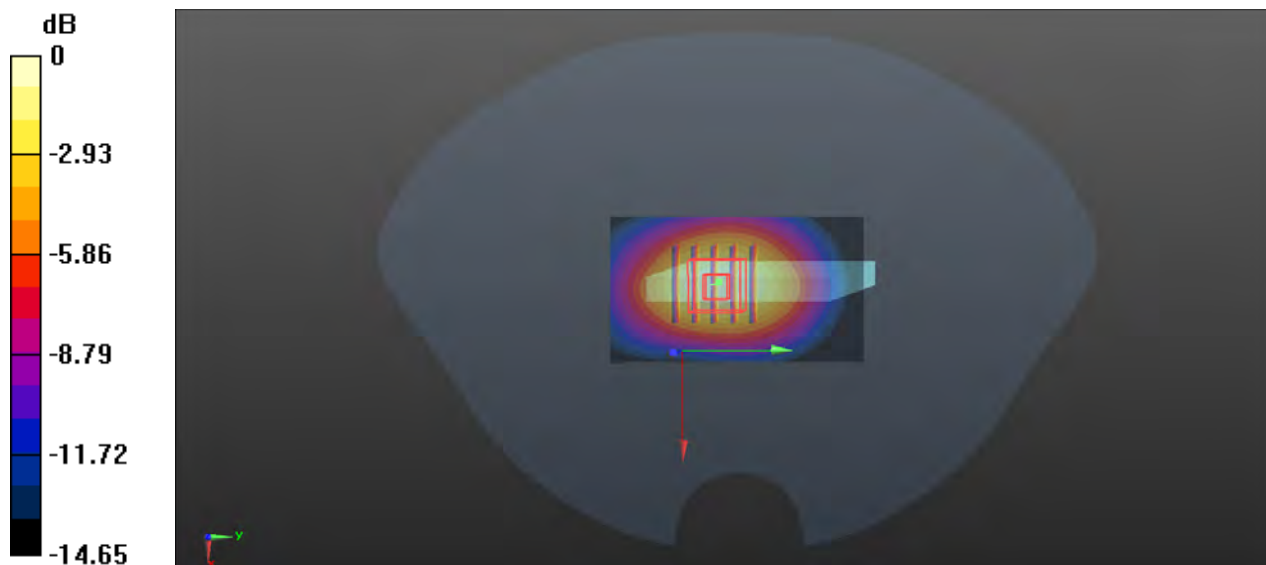
Communication System: WCDMA; Frequency: 1712.4 MHz; Duty Cycle: 1:1
 Medium: HSL1750_1008 Medium parameters used: $f = 1712.4$ MHz; $\sigma = 1.318$ S/m; $\epsilon_r = 39.782$; $\rho = 1000$ kg/m³
 Ambient Temperature : 23.4°C; Liquid Temperature : 22.6°C

DASY5 Configuration:

- Probe: EX3DV4 - SN7612; ConvF(8.9, 8.9, 8.9); Calibrated: 2022/1/27
- Sensor-Surface: 2mm (Mechanical Surface Detection)
- Electronics: DAE4 Sn1633; Calibrated: 2021/10/26
- Phantom: SAM (30deg probe tilt) with CRP v5.0; Type: QD000P40CD; Serial: TP:1781
- Measurement SW: DASY52, Version 52.10 (4); SEMCAD X Version 14.6.14 (7483)

- **Area Scan (41x71x1):** Interpolated grid: dx=1.500 mm, dy=1.500 mm
 Maximum value of SAR (interpolated) = 1.02 W/kg

- **Zoom Scan (5x5x7)/Cube 0:** Measurement grid: dx=8mm, dy=8mm, dz=5mm
 Reference Value = 26.81 V/m; Power Drift = 0.05 dB
 Peak SAR (extrapolated) = 1.46 W/kg
SAR(1 g) = 0.852 W/kg; SAR(10 g) = 0.543 W/kg
 Maximum value of SAR (measured) = 1.00 W/kg



0 dB = 1.00 W/kg

P37 WCDMA V_RMC12.2K_Rear Face_1cm_Ch4182

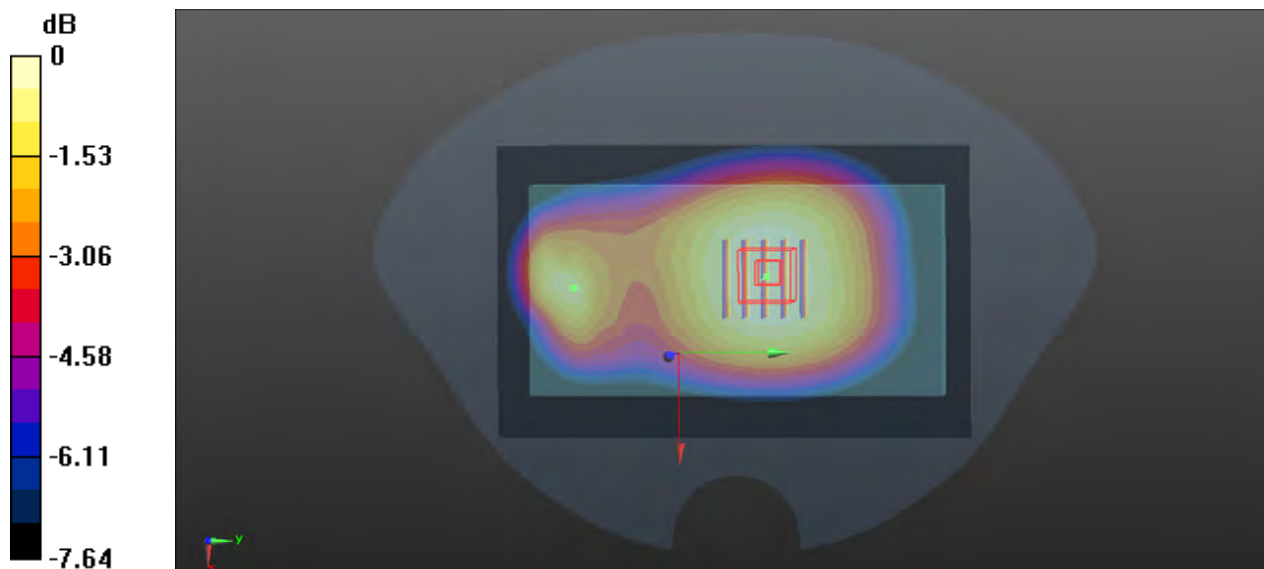
Communication System: WCDMA; Frequency: 836.4 MHz; Duty Cycle: 1:1
Medium: HSL835_1008 Medium parameters used: $f = 836.4$ MHz; $\sigma = 0.914$ S/m; $\epsilon_r = 42.068$; $\rho = 1000$ kg/m³
Ambient Temperature : 23.3°C; Liquid Temperature : 22.5°C

DASY5 Configuration:

- Probe: EX3DV4 - SN7612; ConvF(10.57, 10.57, 10.57); Calibrated: 2022/1/27
- Sensor-Surface: 2mm (Mechanical Surface Detection)
- Electronics: DAE4 Sn1633; Calibrated: 2021/10/26
- Phantom: SAM (30deg probe tilt) with CRP v5.0; Type: QD000P40CD; Serial: TP:1781
- Measurement SW: DASY52, Version 52.10 (4); SEMCAD X Version 14.6.14 (7483)

- **Area Scan (81x131x1):** Interpolated grid: $dx=1.500$ mm, $dy=1.500$ mm
Maximum value of SAR (interpolated) = 0.334 W/kg

- **Zoom Scan (5x5x7)/Cube 0:** Measurement grid: $dx=8$ mm, $dy=8$ mm, $dz=5$ mm
Reference Value = 18.45 V/m; Power Drift = 0.09 dB
Peak SAR (extrapolated) = 0.398 W/kg
SAR(1 g) = 0.318 W/kg; SAR(10 g) = 0.243 W/kg
Maximum value of SAR (measured) = 0.333 W/kg



0 dB = 0.333 W/kg

P38 LTE 2_QPSK20M_Bottom Side_1cm_Ch18700_1RB_OS99

Communication System: LTE; Frequency: 1860 MHz; Duty Cycle: 1:1
Medium: HSL1900_1008 Medium parameters used: $f = 1860$ MHz; $\sigma = 1.385$ S/m; $\epsilon_r = 39.569$; $\rho = 1000$ kg/m³
Ambient Temperature : 23.2°C; Liquid Temperature : 22.5°C

DASY5 Configuration:

- Probe: EX3DV4 - SN7612; ConvF(8.73, 8.73, 8.73); Calibrated: 2022/1/27
- Sensor-Surface: 2mm (Mechanical Surface Detection)
- Electronics: DAE4 Sn1633; Calibrated: 2021/10/26
- Phantom: SAM (30deg probe tilt) with CRP v5.0; Type: QD000P40CD; Serial: TP:1781
- Measurement SW: DASY52, Version 52.10 (4); SEMCAD X Version 14.6.14 (7483)

- **Area Scan (31x71x1):** Interpolated grid: dx=1.500 mm, dy=1.500 mm
Maximum value of SAR (interpolated) = 1.27 W/kg

- **Zoom Scan (5x5x7)/Cube 0:** Measurement grid: dx=8mm, dy=8mm, dz=5mm
Reference Value = 27.40 V/m; Power Drift = 0.10 dB
Peak SAR (extrapolated) = 1.96 W/kg
SAR(1 g) = 1.12 W/kg; SAR(10 g) = 0.604 W/kg
Maximum value of SAR (measured) = 1.25 W/kg



0 dB = 1.25 W/kg

P39 LTE 5_QPSK10M_Rear Face_1cm_Ch20450_1RB_OS0

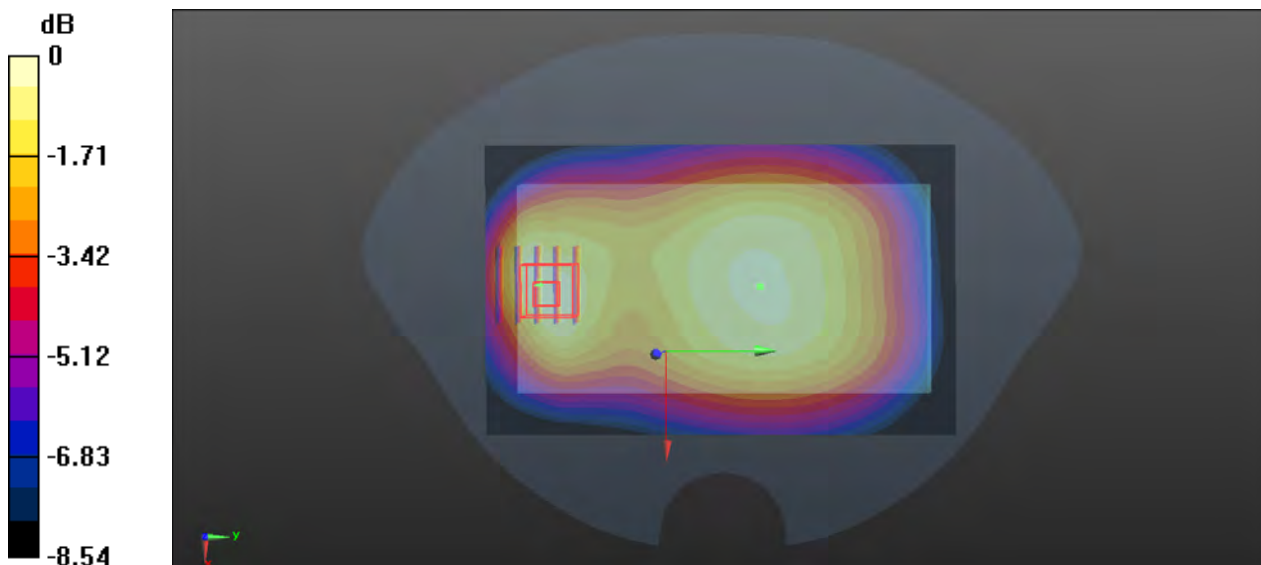
Communication System: LTE; Frequency: 829 MHz; Duty Cycle: 1:1
Medium: HSL835_1008 Medium parameters used: $f = 829 \text{ MHz}$; $\sigma = 0.912 \text{ S/m}$; $\epsilon_r = 42.09$; $\rho = 1000 \text{ kg/m}^3$
Ambient Temperature : 23.3°C ; Liquid Temperature : 22.5°C

DASY5 Configuration:

- Probe: EX3DV4 - SN7612; ConvF(10.57, 10.57, 10.57); Calibrated: 2022/1/27
- Sensor-Surface: 2mm (Mechanical Surface Detection)
- Electronics: DAE4 Sn1633; Calibrated: 2021/10/26
- Phantom: SAM (30deg probe tilt) with CRP v5.0; Type: QD000P40CD; Serial: TP:1781
- Measurement SW: DASY52, Version 52.10 (4); SEMCAD X Version 14.6.14 (7483)

- **Area Scan (81x61x1):** Interpolated grid: $dx=1.500 \text{ mm}$, $dy=1.500 \text{ mm}$
Maximum value of SAR (interpolated) = 0.312 W/kg

- **Zoom Scan (5x5x7)/Cube 0:** Measurement grid: $dx=8\text{mm}$, $dy=8\text{mm}$, $dz=5\text{mm}$
Reference Value = 19.26 V/m ; Power Drift = 0.03 dB
Peak SAR (extrapolated) = 0.403 W/kg
SAR(1 g) = 0.319 W/kg ; SAR(10 g) = 0.241 W/kg
Maximum value of SAR (measured) = 0.331 W/kg



0 dB = 0.331 W/kg

P40 LTE 7_QPSK20M_Front Face_1.3cm_Ch21100_1RB_OS0

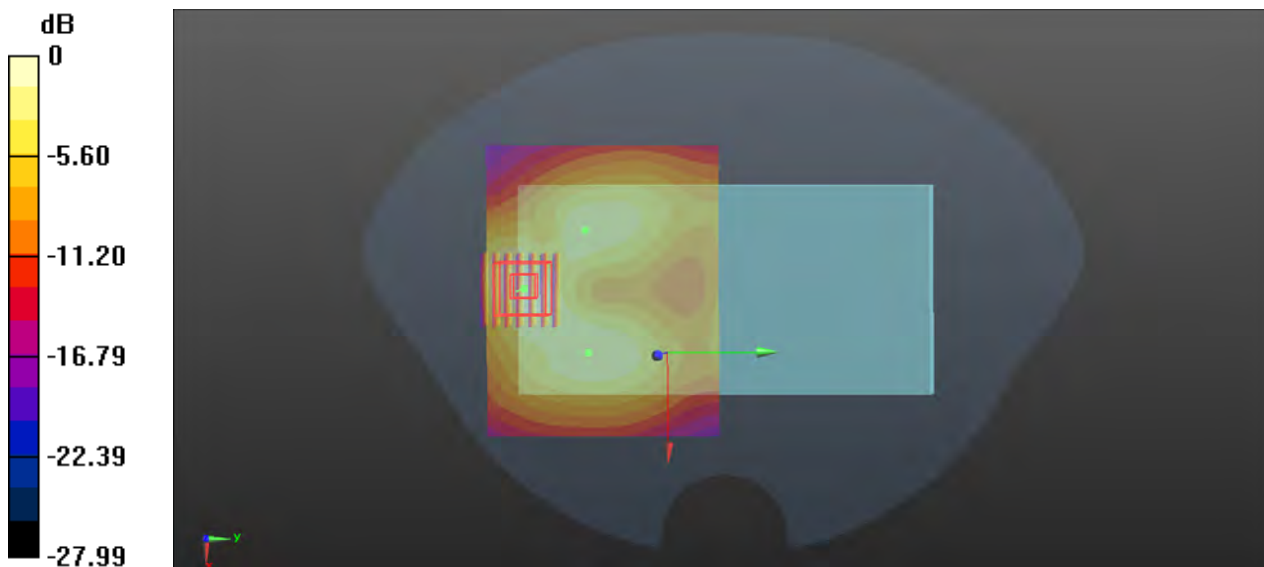
Communication System: LTE; Frequency: 2535 MHz; Duty Cycle: 1:1
Medium: HSL2600_1009 Medium parameters used: $f = 2535$ MHz; $\sigma = 1.844$ S/m; $\epsilon_r = 39.349$; $\rho = 1000$ kg/m³
Ambient Temperature : 23.5°C; Liquid Temperature : 22.6°C

DASY5 Configuration:

- Probe: EX3DV4 - SN7612; ConvF(7.7, 7.7, 7.7); Calibrated: 2022/1/27
- Sensor-Surface: 2mm (Mechanical Surface Detection)
- Electronics: DAE4 Sn1633; Calibrated: 2021/10/26
- Phantom: SAM (30deg probe tilt) with CRP v5.0; Type: QD000P40CD; Serial: TP:1781
- Measurement SW: DASY52, Version 52.10 (4); SEMCAD X Version 14.6.14 (7483)

- **Area Scan (101x81x1):** Interpolated grid: dx=1.200 mm, dy=1.200 mm
Maximum value of SAR (interpolated) = 0.311 W/kg

- **Zoom Scan (7x7x7)/Cube 0:** Measurement grid: dx=5mm, dy=5mm, dz=5mm
Reference Value = 5.977 V/m; Power Drift = 0.04 dB
Peak SAR (extrapolated) = 0.576 W/kg
SAR(1 g) = 0.285 W/kg; SAR(10 g) = 0.140 W/kg
Maximum value of SAR (measured) = 0.317 W/kg



0 dB = 0.317 W/kg

P41 LTE 12_QPSK10M_Rear Face_1cm_Ch23095_1RB_OS0

Communication System: LTE; Frequency: 707.5 MHz; Duty Cycle: 1:1

Medium: HSL750_1008 Medium parameters used: $f = 707.5$ MHz; $\sigma = 0.876$ S/m; $\epsilon_r = 43.539$; $\rho = 1000$ kg/m³

Ambient Temperature : 23.3°C; Liquid Temperature : 22.6°C

DASY5 Configuration:

- Probe: EX3DV4 - SN7612; ConvF(11.02, 11.02, 11.02); Calibrated: 2022/1/27
- Sensor-Surface: 2mm (Mechanical Surface Detection)
- Electronics: DAE4 Sn1633; Calibrated: 2021/10/26
- Phantom: SAM (30deg probe tilt) with CRP v5.0; Type: QD000P40CD; Serial: TP:1781
- Measurement SW: DASY52, Version 52.10 (4); SEMCAD X Version 14.6.14 (7483)

- **Area Scan (81x61x1):** Interpolated grid: dx=1.500 mm, dy=1.500 mm

Maximum value of SAR (interpolated) = 0.297 W/kg

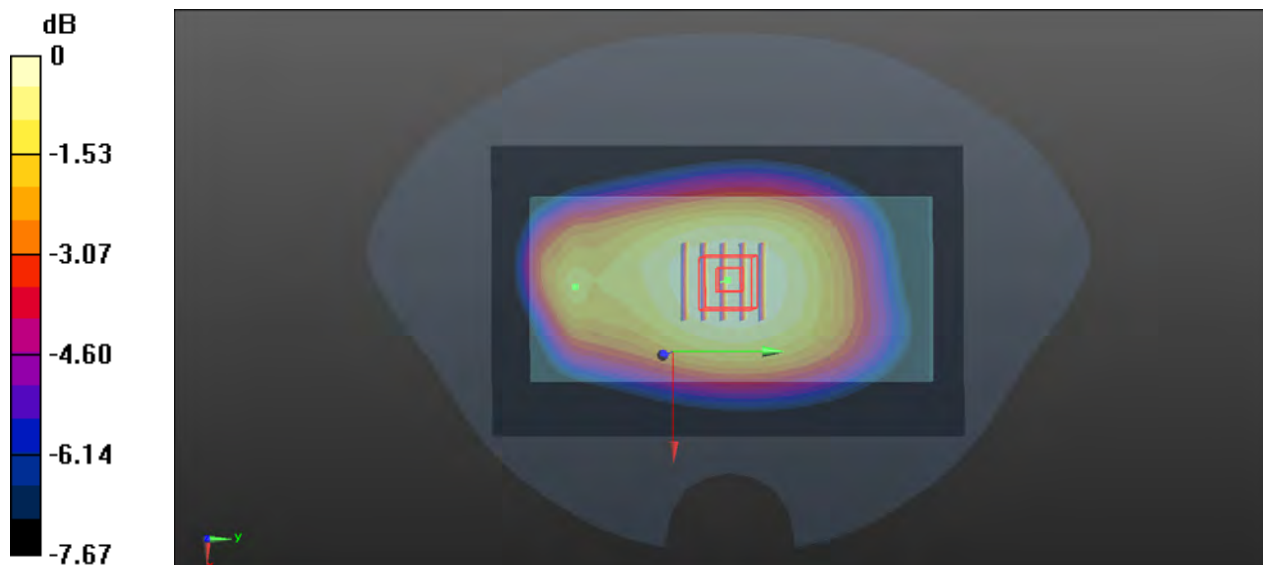
- **Zoom Scan (5x5x7)/Cube 0:** Measurement grid: dx=8mm, dy=8mm, dz=5mm

Reference Value = 18.70 V/m; Power Drift = 0.04 dB

Peak SAR (extrapolated) = 0.358 W/kg

SAR(1 g) = 0.288 W/kg; SAR(10 g) = 0.223 W/kg

Maximum value of SAR (measured) = 0.301 W/kg



0 dB = 0.301 W/kg

P42 LTE 13_QPSK10M_Rear Face_1cm_Ch23230_1RB_OS0

Communication System: LTE; Frequency: 782 MHz; Duty Cycle: 1:1

Medium: HSL750_1008 Medium parameters used: $f = 782 \text{ MHz}$; $\sigma = 0.902 \text{ S/m}$; $\epsilon_r = 43.351$; $\rho = 1000 \text{ kg/m}^3$

Ambient Temperature : 23.3°C ; Liquid Temperature : 22.6°C

DASY5 Configuration:

- Probe: EX3DV4 - SN7612; ConvF(11.02, 11.02, 11.02); Calibrated: 2022/1/27
- Sensor-Surface: 2mm (Mechanical Surface Detection)
- Electronics: DAE4 Sn1633; Calibrated: 2021/10/26
- Phantom: SAM (30deg probe tilt) with CRP v5.0; Type: QD000P40CD; Serial: TP:1781
- Measurement SW: DASY52, Version 52.10 (4); SEMCAD X Version 14.6.14 (7483)

- **Area Scan (81x61x1):** Interpolated grid: $dx=1.500 \text{ mm}$, $dy=1.500 \text{ mm}$

Maximum value of SAR (interpolated) = 0.418 W/kg

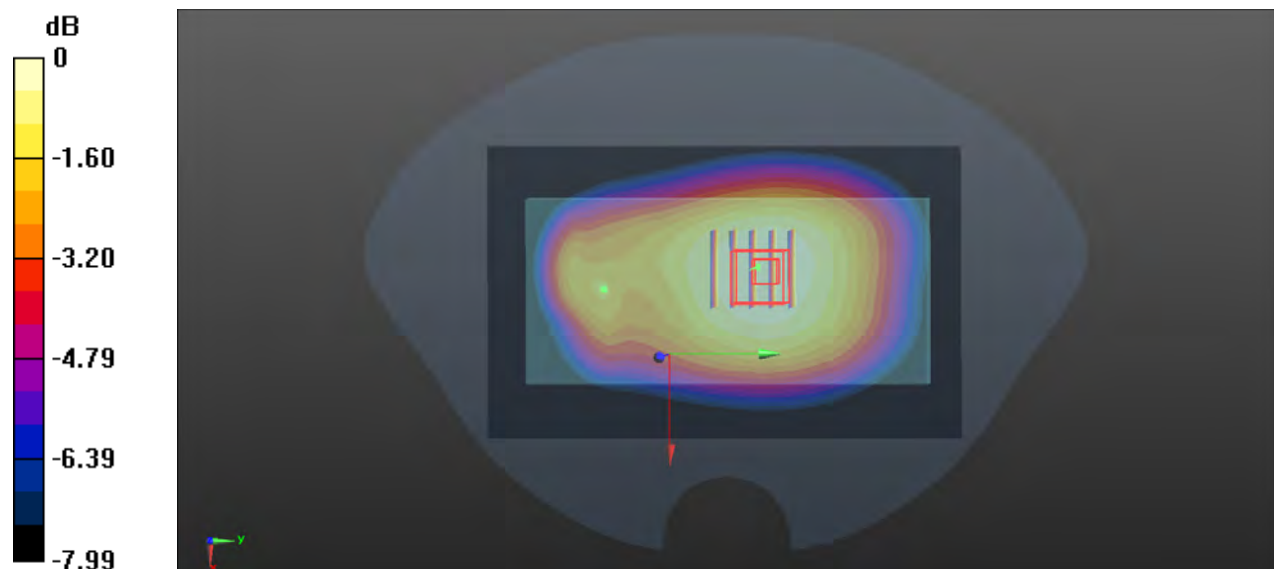
- **Zoom Scan (5x5x7)/Cube 0:** Measurement grid: $dx=8\text{mm}$, $dy=8\text{mm}$, $dz=5\text{mm}$

Reference Value = 21.81 V/m ; Power Drift = 0.06 dB

Peak SAR (extrapolated) = 0.501 W/kg

SAR(1 g) = 0.402 W/kg ; SAR(10 g) = 0.310 W/kg

Maximum value of SAR (measured) = 0.418 W/kg



0 dB = 0.418 W/kg

P43 LTE 66_QPSK20M_Front Face_1.3cm_Ch132072_1RB_OS0

Communication System: LTE; Frequency: 1720 MHz; Duty Cycle: 1:1

Medium: HSL1750_1008 Medium parameters used: $f = 1720$ MHz; $\sigma = 1.319$ S/m; $\epsilon_r = 39.764$; $\rho = 1000$ kg/m³

Ambient Temperature : 23.4°C; Liquid Temperature : 22.6°C

DASY5 Configuration:

- Probe: EX3DV4 - SN7612; ConvF(8.9, 8.9, 8.9); Calibrated: 2022/1/27
- Sensor-Surface: 2mm (Mechanical Surface Detection)
- Electronics: DAE4 Sn1633; Calibrated: 2021/10/26
- Phantom: SAM (30deg probe tilt) with CRP v5.0; Type: QD000P40CD; Serial: TP:1781
- Measurement SW: DASY52, Version 52.10 (4); SEMCAD X Version 14.6.14 (7483)

- **Area Scan (81x61x1):** Interpolated grid: dx=1.500 mm, dy=1.500 mm

Maximum value of SAR (interpolated) = 1.15 W/kg

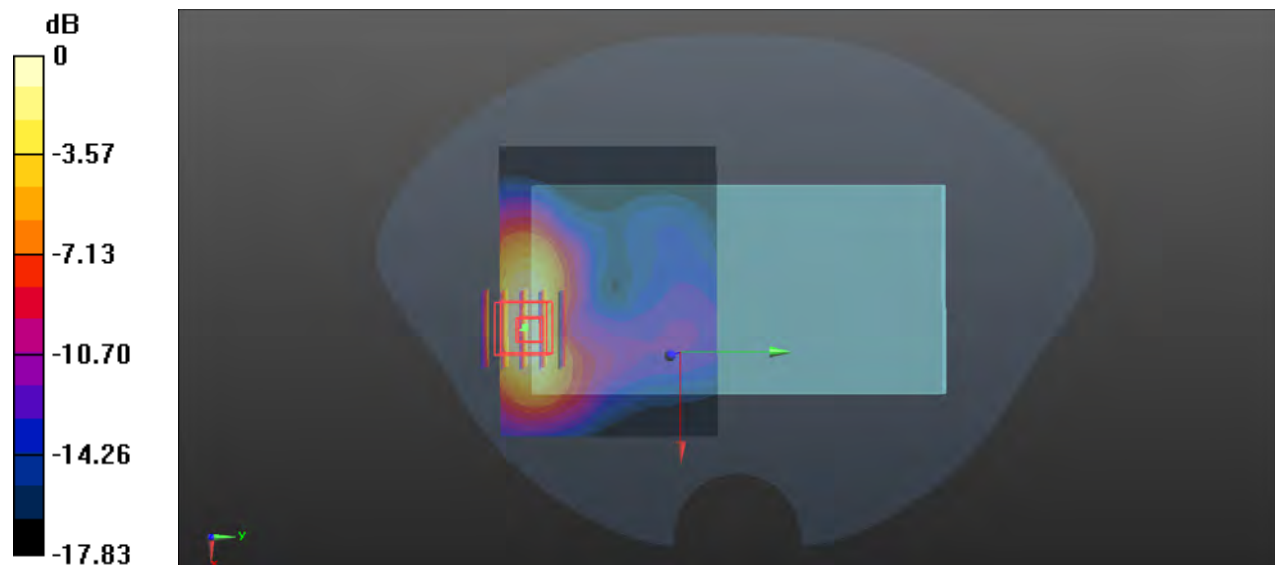
- **Zoom Scan (5x5x7)/Cube 0:** Measurement grid: dx=8mm, dy=8mm, dz=5mm

Reference Value = 5.083 V/m; Power Drift = 0.16 dB

Peak SAR (extrapolated) = 1.71 W/kg

SAR(1 g) = 0.918 W/kg; SAR(10 g) = 0.534 W/kg

Maximum value of SAR (measured) = 1.06 W/kg



0 dB = 1.06 W/kg

P44 WLAN2.4G_802.11b_Rear Face_1cm_Ch1

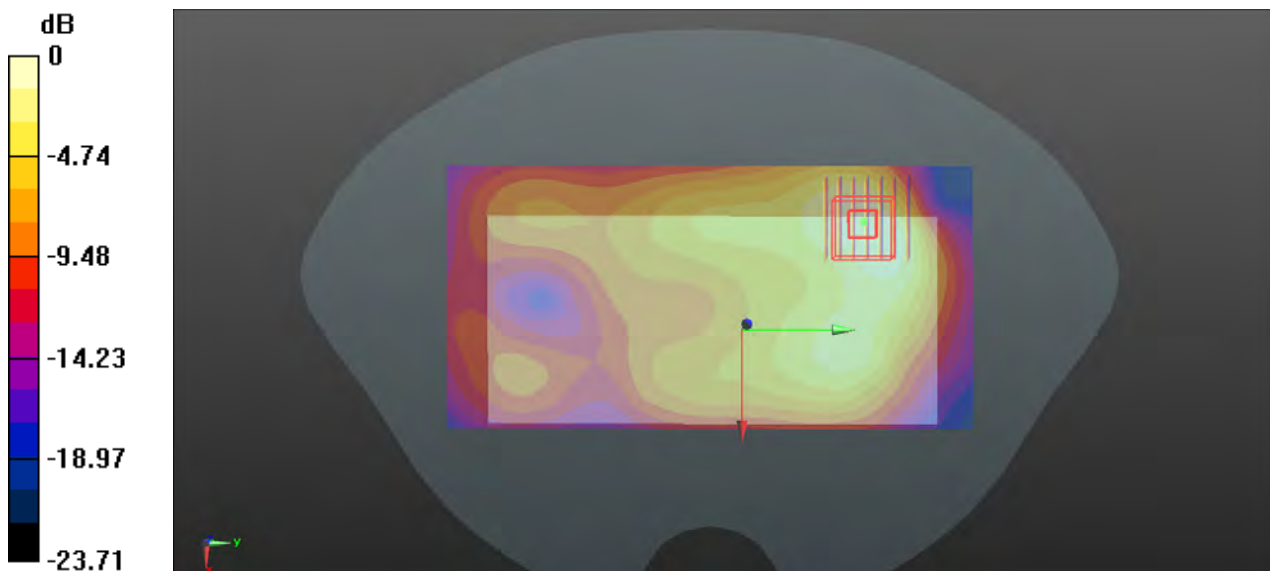
Communication System: 802.11b; Frequency: 2412 MHz; Duty Cycle: 1:1
 Medium: HSL2450_1009 Medium parameters used: $f = 2412$ MHz; $\sigma = 1.761$ S/m; $\epsilon_r = 39.505$; $\rho = 1000$ kg/m³
 Ambient Temperature : 23.5°C; Liquid Temperature : 22.5°C

DASY5 Configuration:

- Probe: EX3DV4 - SN7612; ConvF(7.9, 7.9, 7.9); Calibrated: 2022/1/27
- Sensor-Surface: 2mm (Mechanical Surface Detection)
- Electronics: DAE4 Sn1633; Calibrated: 2021/10/26
- Phantom: SAM (30deg probe tilt) with CRP v5.0; Type: QD000P40CD; Serial: TP:1781
- Measurement SW: DASY52, Version 52.10 (4); SEMCAD X Version 14.6.14 (7483)

- **Area Scan (81x161x1):** Interpolated grid: dx=1.200 mm, dy=1.200 mm
 Maximum value of SAR (interpolated) = 0.459 W/kg

- **Zoom Scan (7x7x7)/Cube 0:** Measurement grid: dx=5mm, dy=5mm, dz=5mm
 Reference Value = 5.335 V/m; Power Drift = 0.07 dB
 Peak SAR (extrapolated) = 0.543 W/kg
SAR(1 g) = 0.267 W/kg; SAR(10 g) = 0.140 W/kg
 Maximum value of SAR (measured) = 0.431 W/kg



0 dB = 0.431 W/kg

P45 WLAN5G_802.11a_Rear Face_1cm_Ch48

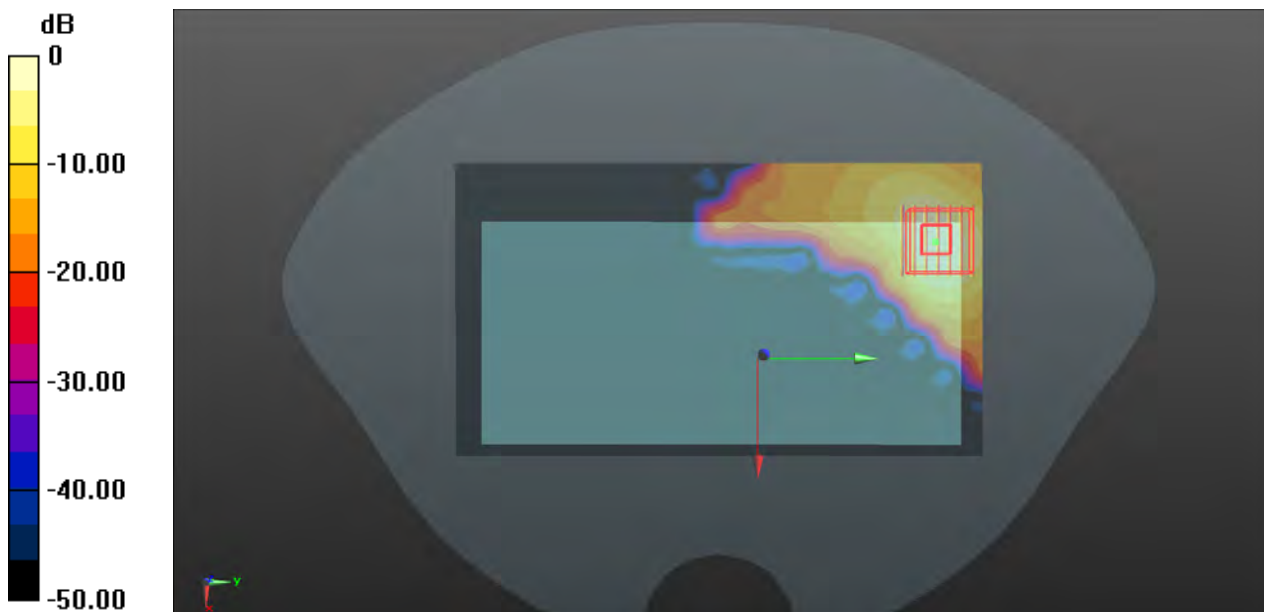
Communication System: 802.11a; Frequency: 5240 MHz; Duty Cycle: 1:1.12
Medium: HSL5G_1012 Medium parameters used: $f = 5240$ MHz; $\sigma = 4.631$ S/m; $\epsilon_r = 36.241$; $\rho = 1000$ kg/m³
Ambient Temperature : 23.5°C; Liquid Temperature : 22.6°C

DASY5 Configuration:

- Probe: EX3DV4 - SN7612; ConvF(5.54, 5.54, 5.54); Calibrated: 2022/1/27
- Sensor-Surface: 2mm (Mechanical Surface Detection)
- Electronics: DAE4 Sn1633; Calibrated: 2021/10/26
- Phantom: SAM (30deg probe tilt) with CRP v5.0; Type: QD000P40CD; Serial: TP:1781
- Measurement SW: DASY52, Version 52.10 (4); SEMCAD X Version 14.6.14 (7483)

- **Area Scan (101x181x1)**: Interpolated grid: dx=1.000 mm, dy=1.000 mm
Maximum value of SAR (interpolated) = 1.28 W/kg

- **Zoom Scan (7x7x12)/Cube 0**: Measurement grid: dx=4mm, dy=4mm, dz=2mm
Reference Value = 0 V/m; Power Drift = 0.00 dB
Peak SAR (extrapolated) = 2.04 W/kg
SAR(1 g) = 0.545 W/kg; SAR(10 g) = 0.178 W/kg
Maximum value of SAR (measured) = 1.27 W/kg



0 dB = 1.27 W/kg

P46 WLAN5G_802.11a_Rear Face_1cm_Ch165

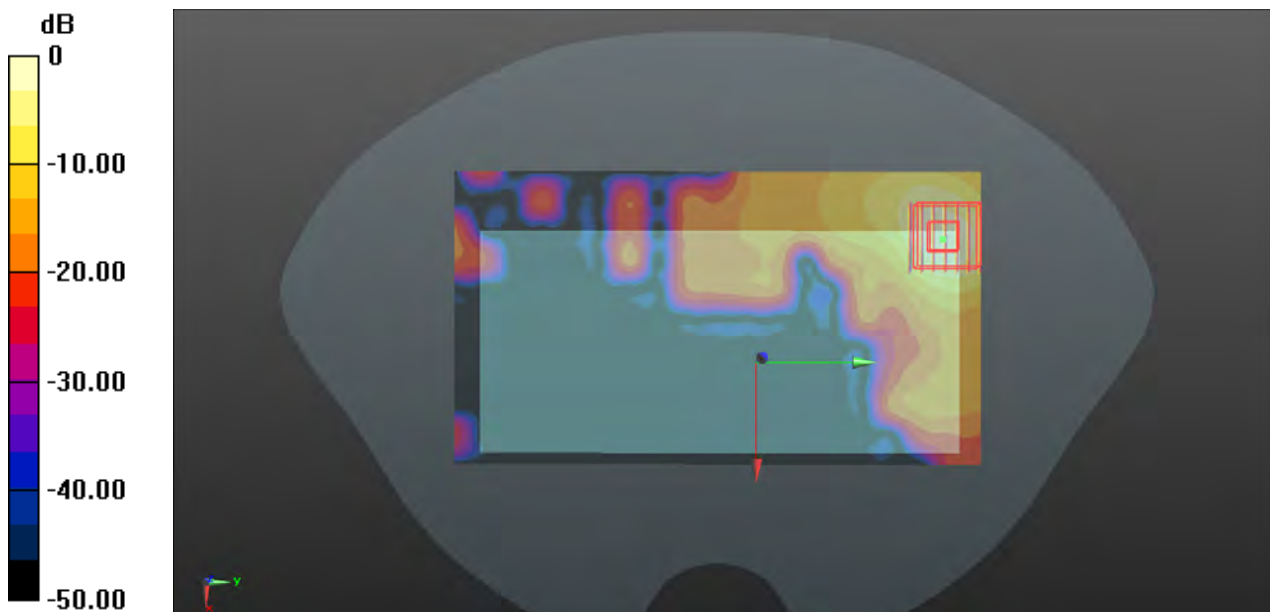
Communication System: 802.11a; Frequency: 5825 MHz; Duty Cycle: 1:1.11
Medium: HSL5G_1011 Medium parameters used: $f = 5825$ MHz; $\sigma = 5.216$ S/m; $\epsilon_r = 35.209$; $\rho = 1000$ kg/m³
Ambient Temperature : 23.4°C; Liquid Temperature : 22.6°C

DASY5 Configuration:

- Probe: EX3DV4 - SN7612; ConvF(5.2, 5.2, 5.2); Calibrated: 2022/1/27
- Sensor-Surface: 2mm (Mechanical Surface Detection)
- Electronics: DAE4 Sn1633; Calibrated: 2021/10/26
- Phantom: SAM (30deg probe tilt) with CRP v5.0; Type: QD000P40CD; Serial: TP:1781
- Measurement SW: DASY52, Version 52.10 (4); SEMCAD X Version 14.6.14 (7483)

- **Area Scan (101x181x1)**: Interpolated grid: dx=1.000 mm, dy=1.000 mm
Maximum value of SAR (interpolated) = 1.54 W/kg

- **Zoom Scan (7x7x12)/Cube 0**: Measurement grid: dx=4mm, dy=4mm, dz=2mm
Reference Value = 0.2520 V/m; Power Drift = -0.00 dB
Peak SAR (extrapolated) = 2.56 W/kg
SAR(1 g) = 0.637 W/kg; SAR(10 g) = 0.205 W/kg
Maximum value of SAR (measured) = 1.55 W/kg



0 dB = 1.55 W/kg

P47 BT_GFSK_Rear Face_1cm_Ch0

Communication System: BT; Frequency: 2402 MHz; Duty Cycle: 1:1.3

Medium: HSL2450_1009 Medium parameters used: $f = 2402$ MHz; $\sigma = 1.755$ S/m; $\epsilon_r = 39.515$; $\rho = 1000$ kg/m³

Ambient Temperature : 23.5°C; Liquid Temperature : 22.5°C

DASY5 Configuration:

- Probe: EX3DV4 - SN7612; ConvF(7.9, 7.9, 7.9); Calibrated: 2022/1/27

- Sensor-Surface: 2mm (Mechanical Surface Detection)

- Electronics: DAE4 Sn1633; Calibrated: 2021/10/26

- Phantom: SAM (30deg probe tilt) with CRP v5.0; Type: QD000P40CD; Serial: TP:1781

- Measurement SW: DASY52, Version 52.10 (4); SEMCAD X Version 14.6.14 (7483)

- **Area Scan (81x161x1):** Interpolated grid: dx=1.200 mm, dy=1.200 mm

Maximum value of SAR (interpolated) = 0.0245 W/kg

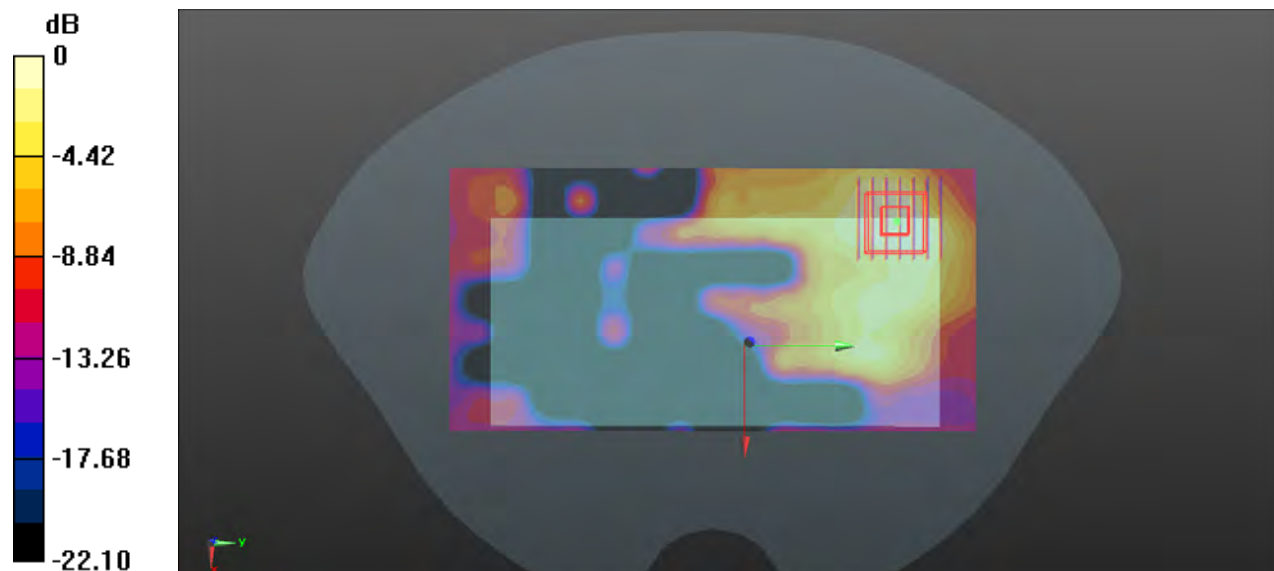
- **Zoom Scan (7x7x7)/Cube 0:** Measurement grid: dx=5mm, dy=5mm, dz=5mm

Reference Value = 0.6120 V/m; Power Drift = 0.03 dB

Peak SAR (extrapolated) = 0.0270 W/kg

SAR(1 g) = 0.013 W/kg; SAR(10 g) = 0.00624 W/kg

Maximum value of SAR (measured) = 0.0215 W/kg



0 dB = 0.0215 W/kg

P48 WCDMA IV_RMC12.2K_Rear Face_0cm_Ch1312

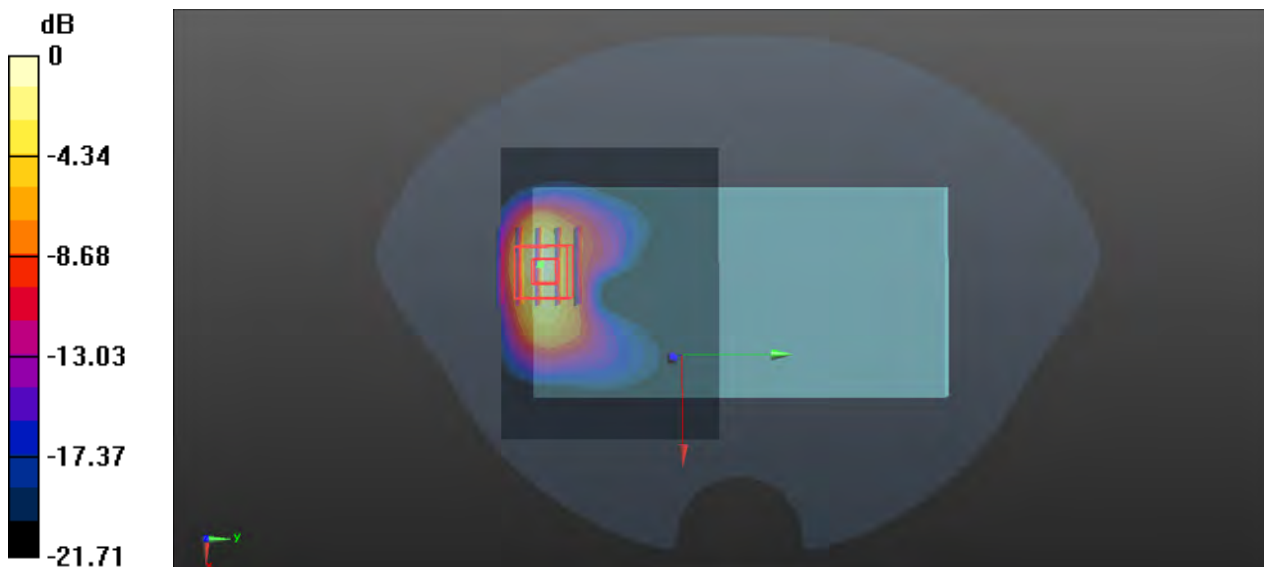
Communication System: WCDMA; Frequency: 1712.4 MHz; Duty Cycle: 1:1
Medium: HSL1750_1008 Medium parameters used: $f = 1712.4$ MHz; $\sigma = 1.318$ S/m; $\epsilon_r = 39.782$; $\rho = 1000$ kg/m³
Ambient Temperature : 23.4°C; Liquid Temperature : 22.6°C

DASY5 Configuration:

- Probe: EX3DV4 - SN7612; ConvF(8.9, 8.9, 8.9); Calibrated: 2022/1/27
- Sensor-Surface: 2mm (Mechanical Surface Detection)
- Electronics: DAE4 Sn1633; Calibrated: 2021/10/26
- Phantom: SAM (30deg probe tilt) with CRP v5.0; Type: QD000P40CD; Serial: TP:1781
- Measurement SW: DASY52, Version 52.10 (4); SEMCAD X Version 14.6.14 (7483)

- **Area Scan (81x61x1):** Interpolated grid: dx=1.500 mm, dy=1.500 mm
Maximum value of SAR (interpolated) = 2.69 W/kg

- **Zoom Scan (5x5x7)/Cube 0:** Measurement grid: dx=8mm, dy=8mm, dz=5mm
Reference Value = 1.392 V/m; Power Drift = 0.07 dB
Peak SAR (extrapolated) = 5.53 W/kg
SAR(1 g) = 2.41 W/kg; SAR(10 g) = 1.03 W/kg
Maximum value of SAR (measured) = 2.95 W/kg



0 dB = 2.95 W/kg

P49 LTE 2_QPSK20M_Bottom Side_0cm_Ch18700_1RB_OS99

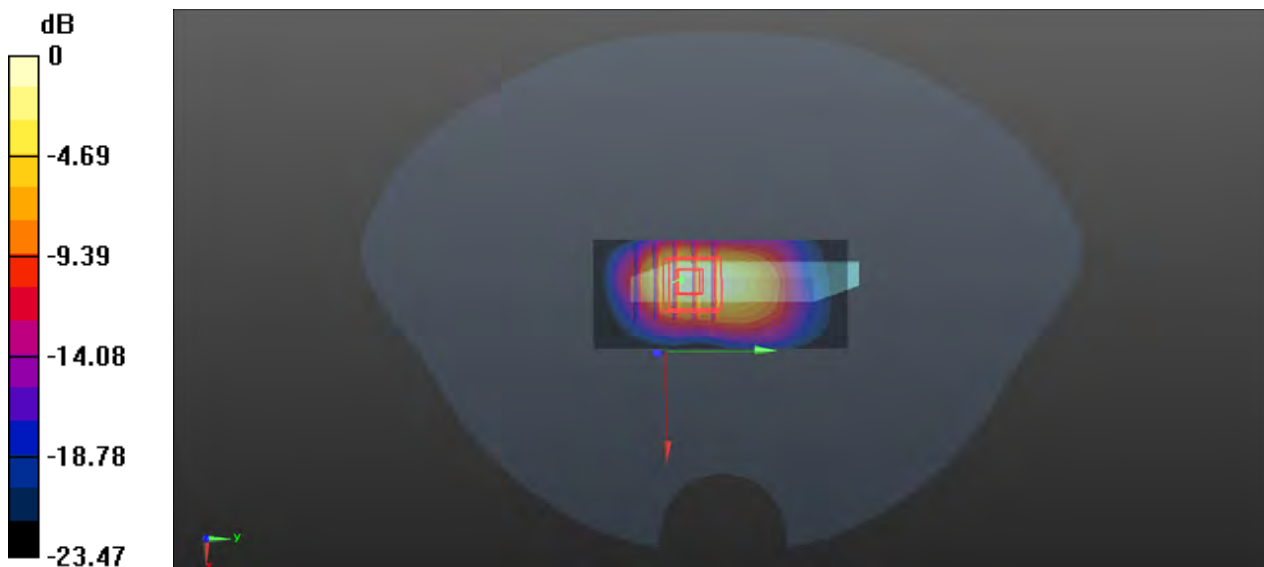
Communication System: LTE; Frequency: 1860 MHz; Duty Cycle: 1:1
Medium: HSL1900_1008 Medium parameters used: $f = 1860$ MHz; $\sigma = 1.385$ S/m; $\epsilon_r = 39.569$; $\rho = 1000$ kg/m³
Ambient Temperature : 23.2°C; Liquid Temperature : 22.5°C

DASY5 Configuration:

- Probe: EX3DV4 - SN7612; ConvF(8.73, 8.73, 8.73); Calibrated: 2022/1/27
- Sensor-Surface: 2mm (Mechanical Surface Detection)
- Electronics: DAE4 Sn1633; Calibrated: 2021/10/26
- Phantom: SAM (30deg probe tilt) with CRP v5.0; Type: QD000P40CD; Serial: TP:1781
- Measurement SW: DASY52, Version 52.10 (4); SEMCAD X Version 14.6.14 (7483)

- **Area Scan (31x71x1):** Interpolated grid: dx=1.500 mm, dy=1.500 mm
Maximum value of SAR (interpolated) = 5.55 W/kg

- **Zoom Scan (5x5x7)/Cube 0:** Measurement grid: dx=8mm, dy=8mm, dz=5mm
Reference Value = 57.23 V/m; Power Drift = 0.13 dB
Peak SAR (extrapolated) = 10.8 W/kg
SAR(1 g) = 4.78 W/kg; SAR(10 g) = 2.09 W/kg
Maximum value of SAR (measured) = 5.55 W/kg



0 dB = 5.55 W/kg

P50 LTE 7_QPSK20M_Bottom Side_0cm_Ch21100_1RB_OS0

Communication System: LTE; Frequency: 2525 MHz; Duty Cycle: 1:1

Medium: HSL2600_1009 Medium parameters used: $f = 2525$ MHz; $\sigma = 1.837$ S/m; $\epsilon_r = 39.361$; $\rho = 1000$ kg/m³

Ambient Temperature : 23.5°C; Liquid Temperature : 22.6°C

DASY5 Configuration:

- Probe: EX3DV4 - SN7612; ConvF(7.7, 7.7, 7.7); Calibrated: 2022/1/27
- Sensor-Surface: 2mm (Mechanical Surface Detection)
- Electronics: DAE4 Sn1633; Calibrated: 2021/10/26
- Phantom: SAM (30deg probe tilt) with CRP v5.0; Type: QD000P40CD; Serial: TP:1781
- Measurement SW: DASY52, Version 52.10 (4); SEMCAD X Version 14.6.14 (7483)

- **Area Scan (41x91x1):** Interpolated grid: dx=1.200 mm, dy=1.200 mm

Maximum value of SAR (interpolated) = 2.68 W/kg

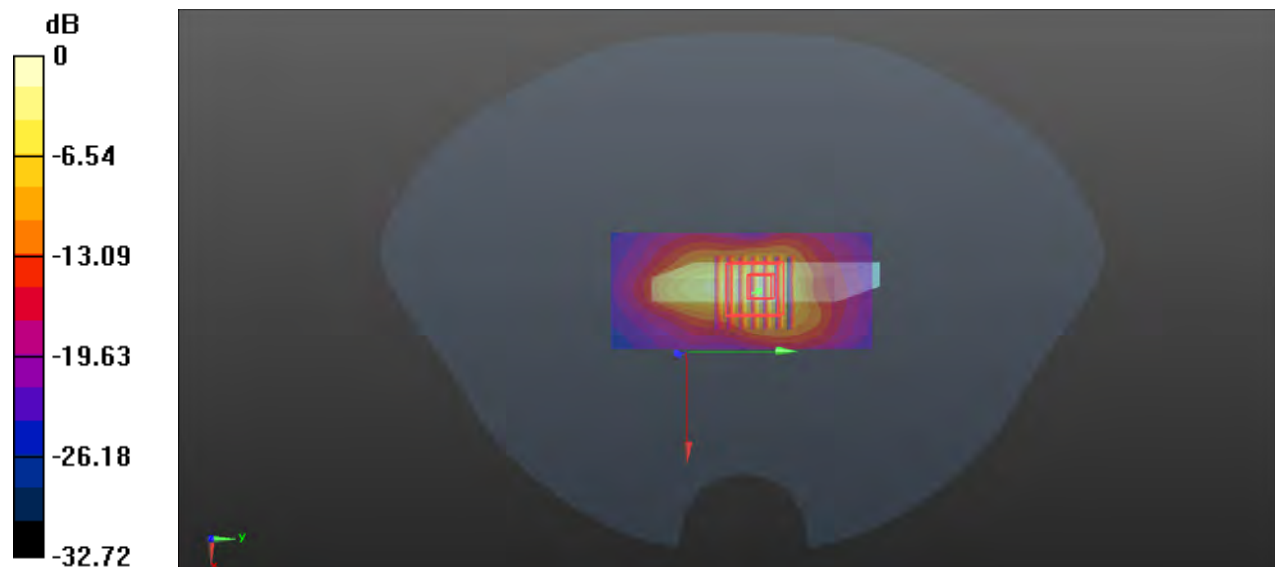
- **Zoom Scan (7x7x7)/Cube 0:** Measurement grid: dx=5mm, dy=5mm, dz=5mm

Reference Value = 34.58 V/m; Power Drift = 0.14 dB

Peak SAR (extrapolated) = 7.16 W/kg

SAR(1 g) = 2.36 W/kg; SAR(10 g) = 0.814 W/kg

Maximum value of SAR (measured) = 2.73 W/kg



0 dB = 2.73 W/kg

P51 LTE 66_QPSK20M_Rear Face_0cm_Ch132322_1RB_OS0

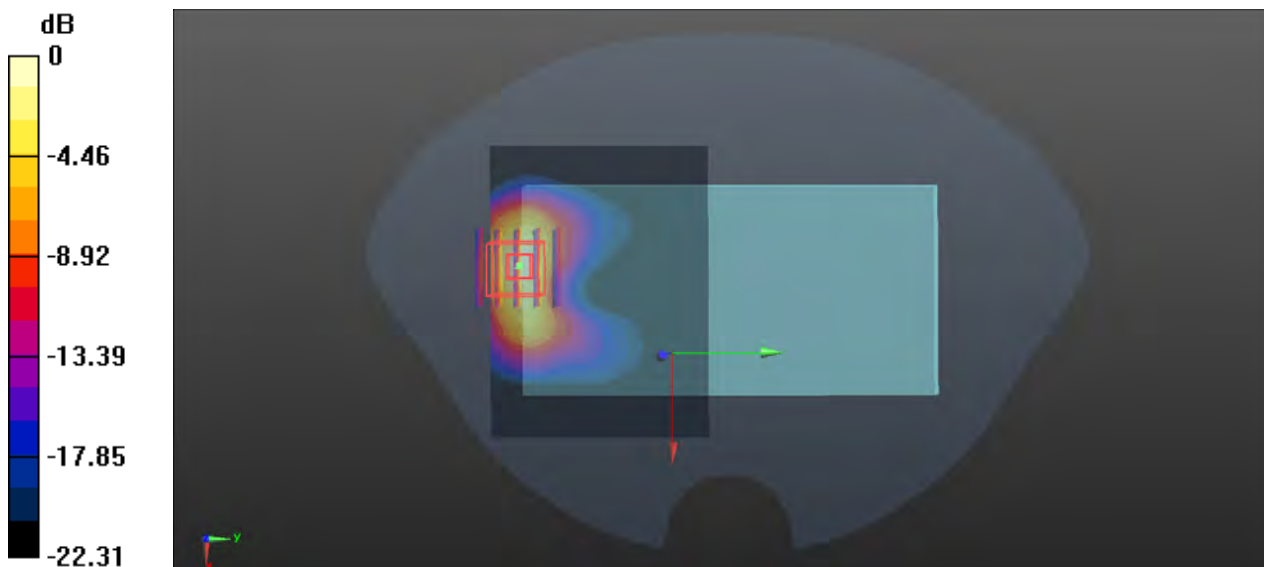
Communication System: LTE; Frequency: 1745 MHz; Duty Cycle: 1:1
Medium: HSL1750_1008 Medium parameters used: $f = 1745 \text{ MHz}$; $\sigma = 1.326 \text{ S/m}$; $\epsilon_r = 39.675$; $\rho = 1000 \text{ kg/m}^3$
Ambient Temperature : 23.4°C ; Liquid Temperature : 22.6°C

DASY5 Configuration:

- Probe: EX3DV4 - SN7612; ConvF(8.9, 8.9, 8.9); Calibrated: 2022/1/27
- Sensor-Surface: 2mm (Mechanical Surface Detection)
- Electronics: DAE4 Sn1633; Calibrated: 2021/10/26
- Phantom: SAM (30deg probe tilt) with CRP v5.0; Type: QD000P40CD; Serial: TP:1781
- Measurement SW: DASY52, Version 52.10 (4); SEMCAD X Version 14.6.14 (7483)

- **Area Scan (81x61x1):** Interpolated grid: $dx=1.500 \text{ mm}$, $dy=1.500 \text{ mm}$
Maximum value of SAR (interpolated) = 3.34 W/kg

- **Zoom Scan (5x5x7)/Cube 0:** Measurement grid: $dx=8\text{mm}$, $dy=8\text{mm}$, $dz=5\text{mm}$
Reference Value = 1.657 V/m ; Power Drift = 0.00 dB
Peak SAR (extrapolated) = 7.08 W/kg
SAR(1 g) = 3 W/kg ; SAR(10 g) = 1.25 W/kg
Maximum value of SAR (measured) = 3.75 W/kg



0 dB = 3.75 W/kg

P52 WLAN5G_802.11a_Top Side_0cm_Ch64

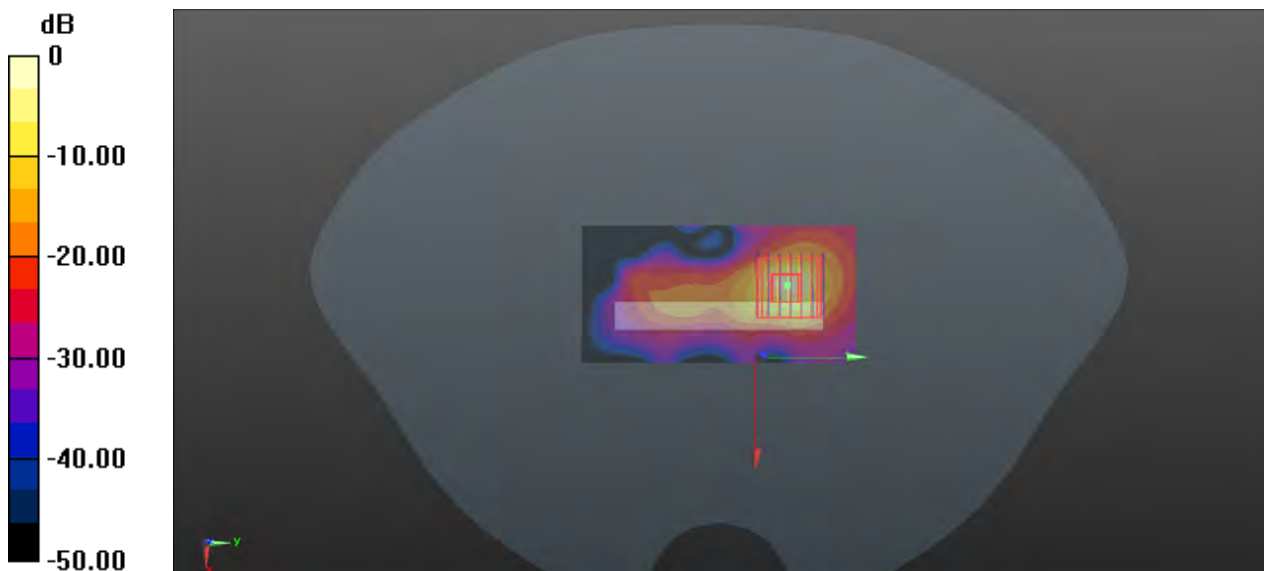
Communication System: 802.11a; Frequency: 5320 MHz; Duty Cycle: 1:1.12
Medium: HSL5G_1012 Medium parameters used: $f = 5320$ MHz; $\sigma = 4.668$ S/m; $\epsilon_r = 35.988$; $\rho = 1000$ kg/m³
Ambient Temperature : 23.5°C; Liquid Temperature : 22.6°C

DASY5 Configuration:

- Probe: EX3DV4 - SN7612; ConvF(5.54, 5.54, 5.54); Calibrated: 2022/1/27
- Sensor-Surface: 2mm (Mechanical Surface Detection)
- Electronics: DAE4 Sn1633; Calibrated: 2021/10/26
- Phantom: SAM (30deg probe tilt) with CRP v5.0; Type: QD000P40CD; Serial: TP:1781
- Measurement SW: DASY52, Version 52.10 (4); SEMCAD X Version 14.6.14 (7483)

- **Area Scan (51x101x1):** Interpolated grid: dx=1.000 mm, dy=1.000 mm
Maximum value of SAR (interpolated) = 25.2 W/kg

- **Zoom Scan (7x7x12)/Cube 0:** Measurement grid: dx=4mm, dy=4mm, dz=2mm
Reference Value = 8.243 V/m; Power Drift = -0.06 dB
Peak SAR (extrapolated) = 72.4 W/kg
SAR(1 g) = 10.6 W/kg; SAR(10 g) = 1.85 W/kg
Maximum value of SAR (measured) = 36.7 W/kg



P53 WLAN5G_802.11a_Top Side_0cm_Ch140

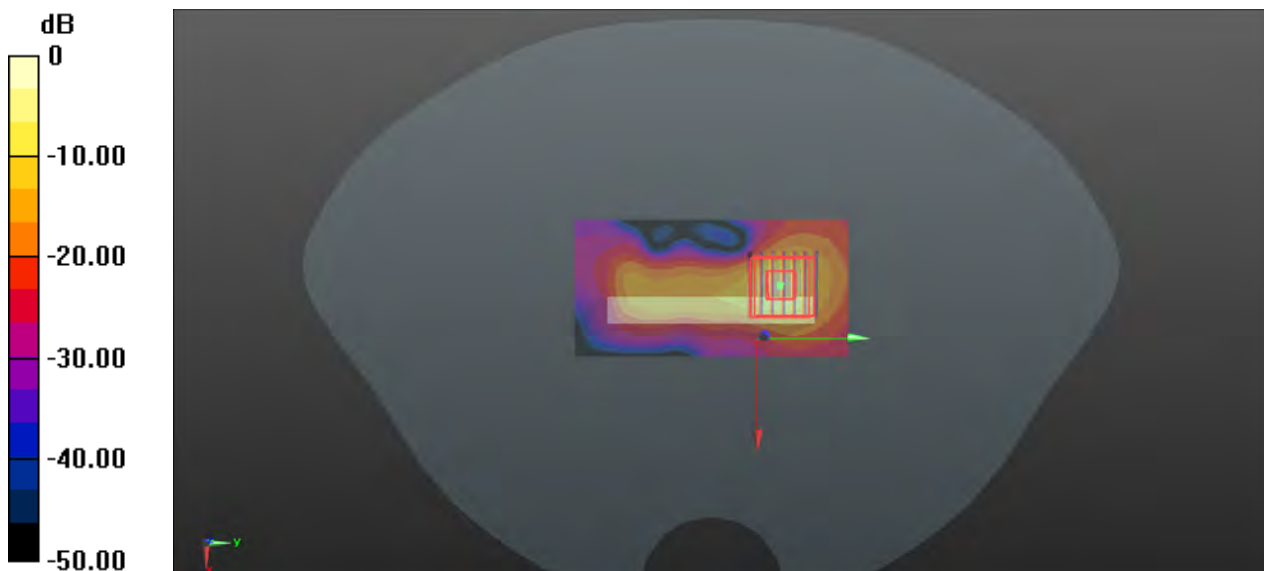
Communication System: 802.11a; Frequency: 5700 MHz; Duty Cycle: 1:1.12
Medium: HSL5G_1010 Medium parameters used: $f = 5700$ MHz; $\sigma = 5.119$ S/m; $\epsilon_r = 35.531$; $\rho = 1000$ kg/m³
Ambient Temperature : 23.5°C; Liquid Temperature : 22.7°C

DASY5 Configuration:

- Probe: EX3DV4 - SN7612; ConvF(5.11, 5.11, 5.11); Calibrated: 2022/1/27
- Sensor-Surface: 2mm (Mechanical Surface Detection)
- Electronics: DAE4 Sn1633; Calibrated: 2021/10/26
- Phantom: SAM (30deg probe tilt) with CRP v5.0; Type: QD000P40CD; Serial: TP:1781
- Measurement SW: DASY52, Version 52.10 (4); SEMCAD X Version 14.6.14 (7483)

- **Area Scan (51x101x1):** Interpolated grid: dx=1.000 mm, dy=1.000 mm
Maximum value of SAR (interpolated) = 20.3 W/kg

- **Zoom Scan (7x7x12)/Cube 0:** Measurement grid: dx=4mm, dy=4mm, dz=2mm
Reference Value = 12.27 V/m; Power Drift = -0.07 dB
Peak SAR (extrapolated) = 60.8 W/kg
SAR(1 g) = 9 W/kg; SAR(10 g) = 1.71 W/kg
Maximum value of SAR (measured) = 31.5 W/kg



0 dB = 31.5 W/kg



Appendix C. Calibration Certificate for Probe and Dipole

The SPEAG calibration certificates are shown as follows.



In Collaboration with
s p e a g
 CALIBRATION LABORATORY



中国认可
 国际互认
 校准
 CALIBRATION
 CNAS L0570

Add: No.52 HuanYuanBei Road, Haidian District, Beijing, 100191, C
 Tel: +86-10-62304633-2079 Fax: +86-10-62304633-2504
 E-mail: cttl@chinattl.com http://www.chinattl.cn

Client

B.V.ADT

Certificate No: Z21-60332

CALIBRATION CERTIFICATE

Object D750V3 - SN: 1067

Calibration Procedure(s) FF-Z11-003-01
 Calibration Procedures for dipole validation kits

Calibration date: September 16, 2021

This calibration Certificate documents the traceability to national standards, which realize the physical units of measurements (SI). The measurements and the uncertainties with confidence probability are given on the following pages and are part of the certificate.

All calibrations have been conducted in the closed laboratory facility: environment temperature (22±3)°C and humidity<70%.

Calibration Equipment used (M&TE critical for calibration)

Primary Standards	ID #	Cal Date (Calibrated by, Certificate No.)	Scheduled Calibration
Power Meter NRP2	106277	23-Sep-20 (CTTL, No.J20X08336)	Sep-21
Power sensor NRP8S	104291	23-Sep-20 (CTTL, No.J20X08336)	Sep-21
Reference Probe EX3DV4	SN 7517	03-Feb-21(CTTL-SPEAG,No.Z21-60001)	Feb-22
DAE4	SN 1556	15-Jan-21(SPEAG,No.DAE4-1556_Jan21)	Jan-22
Secondary Standards	ID #	Cal Date (Calibrated by, Certificate No.)	Scheduled Calibration
Signal Generator E4438C	MY49071430	01-Feb-21 (CTTL, No.J21X00593)	Jan-22
NetworkAnalyzer E5071C	MY46110673	14-Jan-21 (CTTL, No.J21X00232)	Jan-22

	Name	Function	Signature
Calibrated by:	Zhao Jing	SAR Test Engineer	
Reviewed by:	Lin Hao	SAR Test Engineer	
Approved by:	Qi Dianyuan	SAR Project Leader	

Issued: September 21, 2021

This calibration certificate shall not be reproduced except in full without written approval of the laboratory.



Add: No.52 HuanYuanBei Road, Haidian District, Beijing, 100191, China
Tel: +86-10-62304633-2079 Fax: +86-10-62304633-2504
E-mail: cttl@chinattl.com http://www.chinattl.cn

Glossary:

TSL	tissue simulating liquid
ConvF	sensitivity in TSL / NORM _{x,y,z}
N/A	not applicable or not measured

Calibration is Performed According to the Following Standards:

- IEEE Std 1528-2013, "IEEE Recommended Practice for Determining the Peak Spatial-Averaged Specific Absorption Rate (SAR) in the Human Head from Wireless Communications Devices: Measurement Techniques", June 2013
- IEC 62209-1, "Measurement procedure for assessment of specific absorption rate of human exposure to radio frequency fields from hand-held and body-mounted wireless communication devices- Part 1: Device used next to the ear (Frequency range of 300MHz to 6GHz)", July 2016
- IEC 62209-2, "Procedure to measure the Specific Absorption Rate (SAR) For wireless communication devices used in close proximity to the human body (frequency range of 30MHz to 6GHz)", March 2010
- KDB865664, SAR Measurement Requirements for 100 MHz to 6 GHz

Additional Documentation:

- DASY4/5 System Handbook

Methods Applied and Interpretation of Parameters:

- Measurement Conditions:** Further details are available from the Validation Report at the end of the certificate. All figures stated in the certificate are valid at the frequency indicated.
- Antenna Parameters with TSL:** The dipole is mounted with the spacer to position its feed point exactly below the center marking of the flat phantom section, with the arms oriented parallel to the body axis.
- Feed Point Impedance and Return Loss:** These parameters are measured with the dipole positioned under the liquid filled phantom. The impedance stated is transformed from the measurement at the SMA connector to the feed point. The Return Loss ensures low reflected power. No uncertainty required.
- Electrical Delay:** One-way delay between the SMA connector and the antenna feed point. No uncertainty required.
- SAR measured:** SAR measured at the stated antenna input power.
- SAR normalized:** SAR as measured, normalized to an input power of 1 W at the antenna connector.
- SAR for nominal TSL parameters:** The measured TSL parameters are used to calculate the nominal SAR result.

The reported uncertainty of measurement is stated as the standard uncertainty of Measurement multiplied by the coverage factor $k=2$, which for a normal distribution Corresponds to a coverage probability of approximately 95%.



Add: No.52 Huan YuanBei Road, Haidian District, Beijing, 100191, China
 Tel: +86-10-62304633-2079 Fax: +86-10-62304633-2504
 E-mail: cttl@chinattl.com http://www.chinattl.cn

Measurement Conditions

DASY system configuration, as far as not given on page 1.

DASY Version	DASY52	V52.10.4
Extrapolation	Advanced Extrapolation	
Phantom	Triple Flat Phantom 5.1C	
Distance Dipole Center - TSL	15 mm	with Spacer
Zoom Scan Resolution	dx, dy, dz = 5 mm	
Frequency	750 MHz ± 1 MHz	

Head TSL parameters

The following parameters and calculations were applied.

	Temperature	Permittivity	Conductivity
Nominal Head TSL parameters	22.0 °C	42.0	0.90 mho/m
Measured Head TSL parameters	(22.0 ± 0.2) °C	42.1 ± 6 %	0.87 mho/m ± 6 %
Head TSL temperature change during test	<1.0 °C	----	----

SAR result with Head TSL

SAR averaged over 1 cm³ (1 g) of Head TSL	Condition	
SAR measured	250 mW input power	2.05 W/kg
SAR for nominal Head TSL parameters	normalized to 1W	8.34 W/kg ± 18.8 % (k=2)
SAR averaged over 10 cm³ (10 g) of Head TSL	Condition	
SAR measured	250 mW input power	1.34 W/kg
SAR for nominal Head TSL parameters	normalized to 1W	5.43 W/kg ± 18.7 % (k=2)



Add: No.52 HuanYuanBei Road, Haidian District, Beijing, 100191, China
Tel: +86-10-62304633-2079 Fax: +86-10-62304633-2504
E-mail: cttl@chinattl.com http://www.chinattl.cn

Appendix (Additional assessments outside the scope of CNAS L0570)

Antenna Parameters with Head TSL

Impedance, transformed to feed point	55.7Ω- 1.83jΩ
Return Loss	- 25.0dB

General Antenna Parameters and Design

Electrical Delay (one direction)	0.939 ns
----------------------------------	----------

After long term use with 100W radiated power, only a slight warming of the dipole near the feedpoint can be measured.

The dipole is made of standard semirigid coaxial cable. The center conductor of the feeding line is directly connected to the second arm of the dipole. The antenna is therefore short-circuited for DC-signals. On some of the dipoles, small end caps are added to the dipole arms in order to improve matching when loaded according to the position as explained in the "Measurement Conditions" paragraph. The SAR data are not affected by this change. The overall dipole length is still according to the Standard. No excessive force must be applied to the dipole arms, because they might bend or the soldered connections near the feedpoint may be damaged.

Additional EUT Data

Manufactured by	SPEAG
-----------------	-------



Add: No.52 HuanYuanBei Road, Haidian District, Beijing, 100191, China
Tel: +86-10-62304633-2079 Fax: +86-10-62304633-2504
E-mail: cttl@chinattl.com http://www.chinattl.cn

DASY5 Validation Report for Head TSL

Date: 09.16.2021

Test Laboratory: CCTL, Beijing, China

DUT: Dipole 750 MHz; Type: D750V3; Serial: D750V3 - SN: 1067

Communication System: UID 0, CW; Frequency: 750 MHz; Duty Cycle: 1:1

Medium parameters used: $f = 750$ MHz; $\sigma = 0.872$ S/m; $\epsilon_r = 42.14$; $\rho = 1000$ kg/m³

Phantom section: Right Section

DASY5 Configuration:

- Probe: EX3DV4 - SN7517; ConvF(9.81, 9.81, 9.81) @ 750 MHz; Calibrated: 2021-02-03
- Sensor-Surface: 1.4mm (Mechanical Surface Detection)
- Electronics: DAE4 Sn1556; Calibrated: 2021-01-15
- Phantom: MFP_V5.1C (20deg probe tilt); Type: QD 000 P51 Cx; Serial: 1062
- Measurement SW: DASY52, Version 52.10 (4); SEMCAD X Version 14.6.14 (7483)

Dipole Calibration/Zoom Scan (7x7x7) (7x7x7)/Cube 0: Measurement grid: dx=5mm, dy=5mm, dz=5mm

Reference Value = 55.23 V/m; Power Drift = -0.01 dB

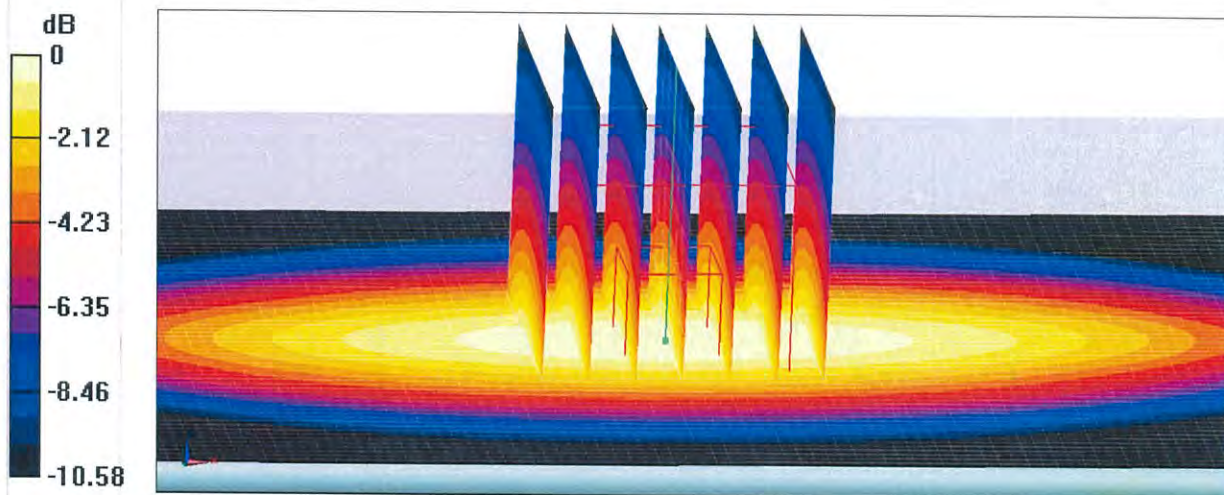
Peak SAR (extrapolated) = 3.22 W/kg

SAR(1 g) = 2.05 W/kg; SAR(10 g) = 1.34 W/kg

Smallest distance from peaks to all points 3 dB below: Larger than measurement grid

Ratio of SAR at M2 to SAR at M1 = 63.9%

Maximum value of SAR (measured) = 2.79 W/kg

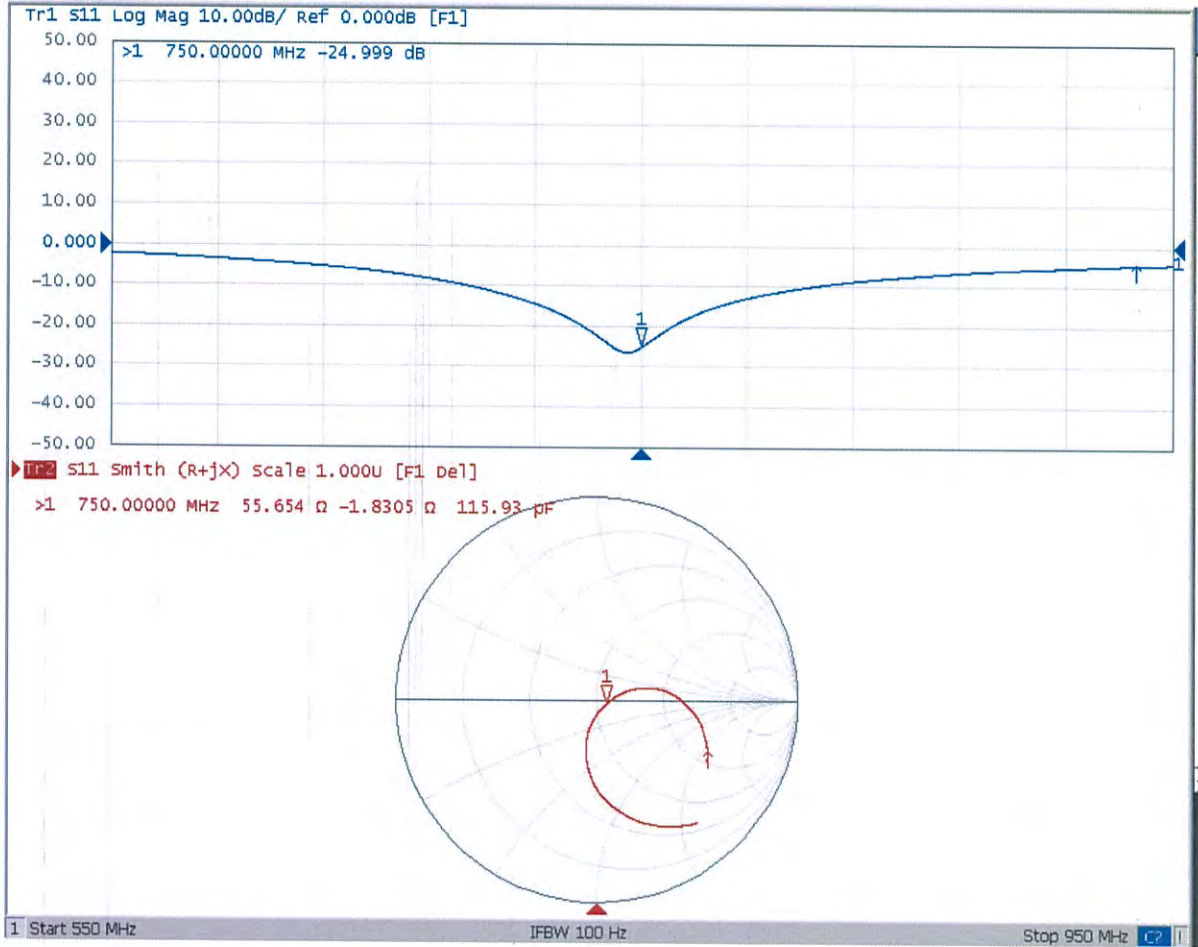


0 dB = 2.79 W/kg = 4.46 dBW/kg



Add: No.52 HuanYuanBei Road, Haidian District, Beijing, 100191, China
Tel: +86-10-62304633-2079 Fax: +86-10-62304633-2504
E-mail: cttl@chinattl.com http://www.chinattl.cn

Impedance Measurement Plot for Head TSL



D750V3 - SN: 1067 Extended Dipole Calibrations

Referring to KDB 865664 D01, if dipoles are verified in return loss (<-20dB, within 20% of prior calibration), and in impedance (within 5 ohm of prior calibration), the annual calibration is not necessary and the calibration interval can be extended.

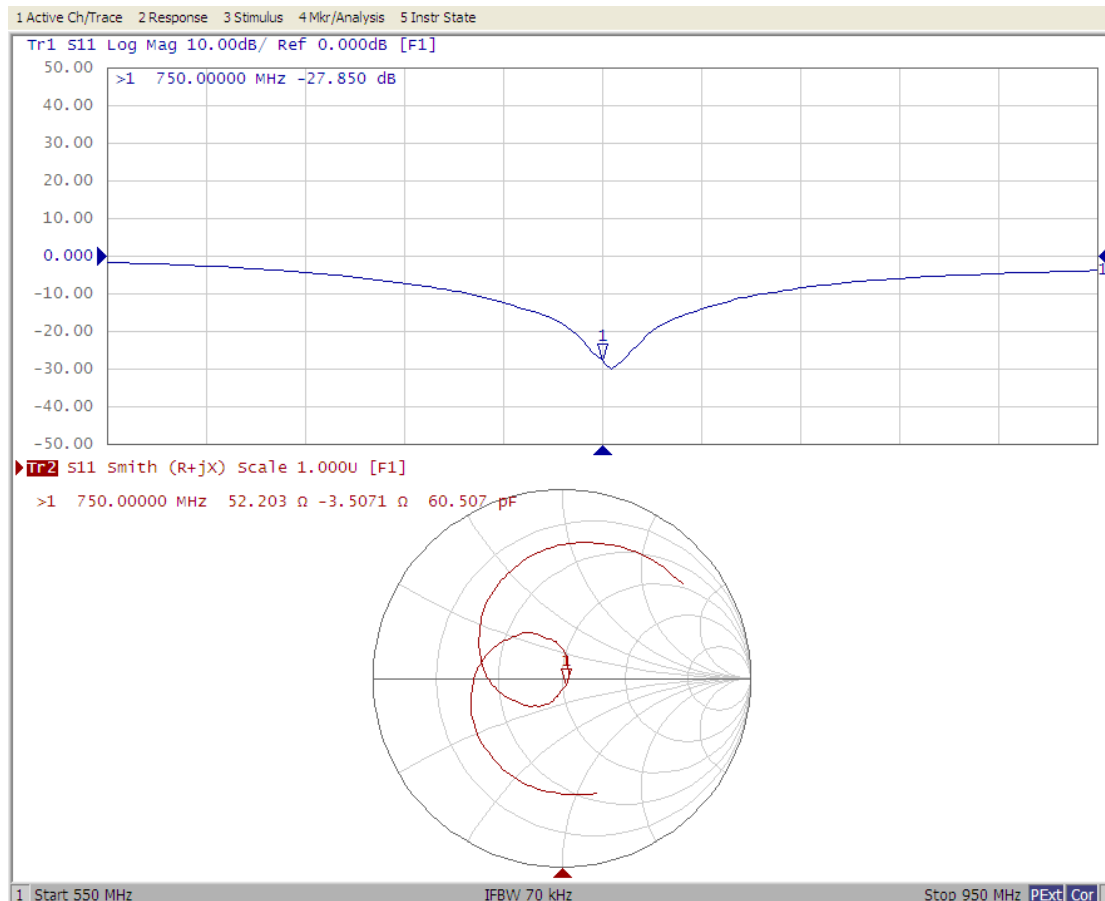
D750V3 - SN: 1067						
750 Head						
Date of Measurement	Return-loss (dB)	Delta (%)	Real Impedance (ohm)	Delta (ohm)	Imaginary Impedance (ohm)	Delta (ohm)
2021.09.16	-25.0		55.7		-1.8	
2022.09.16	-27.8	-11.2	52.2	-3.5	-3.5	-1.7

<Justification of the extended calibration>

The return loss is <-20dB, within 20% of prior calibration, and the impedance is within 5 ohm of prior calibration. Therefore the verification result should support extended calibration.

<Dipole Verification Data>

Head 750MHz _2022.0916





In Collaboration with
s p e a g
CALIBRATION LABORATORY



中国认可
国际互认
校准
CALIBRATION
CNAS L0570

Add: No.52 HuaYuanBei Road, Haidian District, Beijing, 100191, Chi
Tel: +86-10-62304633-2079 Fax: +86-10-62304633-2504
E-mail: cttl@chinattl.com http://www.chinattl.cn

Client **B.V.ADT**

Certificate No: **Z21-60333**

CALIBRATION CERTIFICATE

Object **D835V2 - SN: 4d139**

Calibration Procedure(s) **FF-Z11-003-01**
Calibration Procedures for dipole validation kits

Calibration date: **September 17, 2021**

This calibration Certificate documents the traceability to national standards, which realize the physical units of measurements (SI). The measurements and the uncertainties with confidence probability are given on the following pages and are part of the certificate.

All calibrations have been conducted in the closed laboratory facility: environment temperature (22±3)°C and humidity<70%.

Calibration Equipment used (M&TE critical for calibration)

Primary Standards	ID #	Cal Date (Calibrated by, Certificate No.)	Scheduled Calibration
Power Meter NRP2	106277	23-Sep-20 (CTTL, No.J20X08336)	Sep-21
Power sensor NRP8S	104291	23-Sep-20 (CTTL, No.J20X08336)	Sep-21
Reference Probe EX3DV4	SN 7517	03-Feb-21(CTTL-SPEAG,No.Z21-60001)	Feb-22
DAE4	SN 1556	15-Jan-21(SPEAG,No.DAE4-1556_Jan21)	Jan-22
Secondary Standards	ID #	Cal Date (Calibrated by, Certificate No.)	Scheduled Calibration
Signal Generator E4438C	MY49071430	01-Feb-21 (CTTL, No.J21X00593)	Jan-22
NetworkAnalyzer E5071C	MY46110673	14-Jan-21 (CTTL, No.J21X00232)	Jan-22

	Name	Function	Signature
Calibrated by:	Zhao Jing	SAR Test Engineer	
Reviewed by:	Lin Hao	SAR Test Engineer	
Approved by:	Qi Dianyuan	SAR Project Leader	

Issued: September 22, 2021

This calibration certificate shall not be reproduced except in full without written approval of the laboratory.



Add: No.52 HuaYuanBei Road, Haidian District, Beijing, 100191, China
Tel: +86-10-62304633-2079 Fax: +86-10-62304633-2504
E-mail: cttl@chinattl.com http://www.chinattl.cn

Glossary:

TSL	tissue simulating liquid
ConvF	sensitivity in TSL / NORM _{x,y,z}
N/A	not applicable or not measured

Calibration is Performed According to the Following Standards:

- IEEE Std 1528-2013, "IEEE Recommended Practice for Determining the Peak Spatial-Averaged Specific Absorption Rate (SAR) in the Human Head from Wireless Communications Devices: Measurement Techniques", June 2013
- IEC 62209-1, "Measurement procedure for assessment of specific absorption rate of human exposure to radio frequency fields from hand-held and body-mounted wireless communication devices- Part 1: Device used next to the ear (Frequency range of 300MHz to 6GHz)", July 2016
- IEC 62209-2, "Procedure to measure the Specific Absorption Rate (SAR) For wireless communication devices used in close proximity to the human body (frequency range of 30MHz to 6GHz)", March 2010
- KDB865664, SAR Measurement Requirements for 100 MHz to 6 GHz

Additional Documentation:

- DASY4/5 System Handbook

Methods Applied and Interpretation of Parameters:

- Measurement Conditions:* Further details are available from the Validation Report at the end of the certificate. All figures stated in the certificate are valid at the frequency indicated.
- Antenna Parameters with TSL:* The dipole is mounted with the spacer to position its feed point exactly below the center marking of the flat phantom section, with the arms oriented parallel to the body axis.
- Feed Point Impedance and Return Loss:* These parameters are measured with the dipole positioned under the liquid filled phantom. The impedance stated is transformed from the measurement at the SMA connector to the feed point. The Return Loss ensures low reflected power. No uncertainty required.
- Electrical Delay:* One-way delay between the SMA connector and the antenna feed point. No uncertainty required.
- SAR measured:* SAR measured at the stated antenna input power.
- SAR normalized:* SAR as measured, normalized to an input power of 1 W at the antenna connector.
- SAR for nominal TSL parameters:* The measured TSL parameters are used to calculate the nominal SAR result.

The reported uncertainty of measurement is stated as the standard uncertainty of Measurement multiplied by the coverage factor $k=2$, which for a normal distribution Corresponds to a coverage probability of approximately 95%.



Add: No.52 HuaYuanBei Road, Haidian District, Beijing, 100191, China
 Tel: +86-10-62304633-2079 Fax: +86-10-62304633-2504
 E-mail: cttl@chinattl.com http://www.chinattl.cn

Measurement Conditions

DASY system configuration, as far as not given on page 1.

DASY Version	DASY52	V52.10.4
Extrapolation	Advanced Extrapolation	
Phantom	Triple Flat Phantom 5.1C	
Distance Dipole Center - TSL	15 mm	with Spacer
Zoom Scan Resolution	dx, dy, dz = 5 mm	
Frequency	835 MHz ± 1 MHz	

Head TSL parameters

The following parameters and calculations were applied.

	Temperature	Permittivity	Conductivity
Nominal Head TSL parameters	22.0 °C	41.5	0.90 mho/m
Measured Head TSL parameters	(22.0 ± 0.2) °C	41.2 ± 6 %	0.91 mho/m ± 6 %
Head TSL temperature change during test	<1.0 °C	----	----

SAR result with Head TSL

SAR averaged over 1 cm³ (1 g) of Head TSL	Condition	
SAR measured	250 mW input power	2.39 W/kg
SAR for nominal Head TSL parameters	normalized to 1W	9.47 W/kg ± 18.8 % (k=2)
SAR averaged over 10 cm³ (10 g) of Head TSL	Condition	
SAR measured	250 mW input power	1.55 W/kg
SAR for nominal Head TSL parameters	normalized to 1W	6.15 W/kg ± 18.7 % (k=2)



Add: No.52 HuaYuanBei Road, Haidian District, Beijing, 100191, China
Tel: +86-10-62304633-2079 Fax: +86-10-62304633-2504
E-mail: cttl@chinattl.com http://www.chinattl.cn

Appendix (Additional assessments outside the scope of CNAS L0570)

Antenna Parameters with Head TSL

Impedance, transformed to feed point	51.4Ω- 2.93jΩ
Return Loss	- 29.9dB

General Antenna Parameters and Design

Electrical Delay (one direction)	1.302 ns
----------------------------------	----------

After long term use with 100W radiated power, only a slight warming of the dipole near the feedpoint can be measured.

The dipole is made of standard semirigid coaxial cable. The center conductor of the feeding line is directly connected to the second arm of the dipole. The antenna is therefore short-circuited for DC-signals. On some of the dipoles, small end caps are added to the dipole arms in order to improve matching when loaded according to the position as explained in the "Measurement Conditions" paragraph. The SAR data are not affected by this change. The overall dipole length is still according to the Standard. No excessive force must be applied to the dipole arms, because they might bend or the soldered connections near the feedpoint may be damaged.

Additional EUT Data

Manufactured by	SPEAG
-----------------	-------



Add: No.52 HuaYuanBei Road, Haidian District, Beijing, 100191, China
Tel: +86-10-62304633-2079 Fax: +86-10-62304633-2504
E-mail: cttl@chinattl.com http://www.chinattl.cn

DASY5 Validation Report for Head TSL

Date: 09.17.2021

Test Laboratory: CTTL, Beijing, China

DUT: Dipole 835 MHz; Type: D835V2; Serial: D835V2 - SN: 4d139

Communication System: UID 0, CW; Frequency: 835 MHz; Duty Cycle: 1:1

Medium parameters used: $f = 835$ MHz; $\sigma = 0.91$ S/m; $\epsilon_r = 41.23$; $\rho = 1000$ kg/m³

Phantom section: Right Section

DASY5 Configuration:

- Probe: EX3DV4 - SN7517; ConvF(9.81, 9.81, 9.81) @ 835 MHz; Calibrated: 2021-02-03
- Sensor-Surface: 1.4mm (Mechanical Surface Detection)
- Electronics: DAE4 Sn1556; Calibrated: 2021-01-15
- Phantom: MFP_V5.1C (20deg probe tilt); Type: QD 000 P51 Cx; Serial: 1062
- Measurement SW: DASY52, Version 52.10 (4); SEMCAD X Version 14.6.14 (7483)

Dipole Calibration/Zoom Scan (7x7x7) (7x7x7)/Cube 0: Measurement grid: dx=5mm, dy=5mm, dz=5mm

Reference Value = 58.58 V/m; Power Drift = 0.00 dB

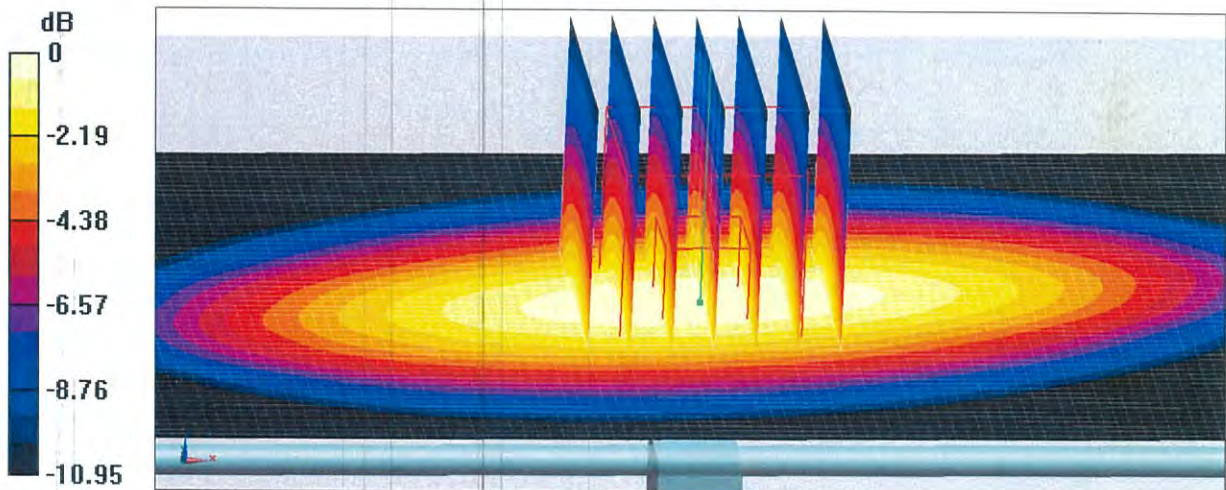
Peak SAR (extrapolated) = 3.75 W/kg

SAR(1 g) = 2.39 W/kg; SAR(10 g) = 1.55 W/kg

Smallest distance from peaks to all points 3 dB below = 17.5 mm

Ratio of SAR at M2 to SAR at M1 = 63.9%

Maximum value of SAR (measured) = 3.27 W/kg

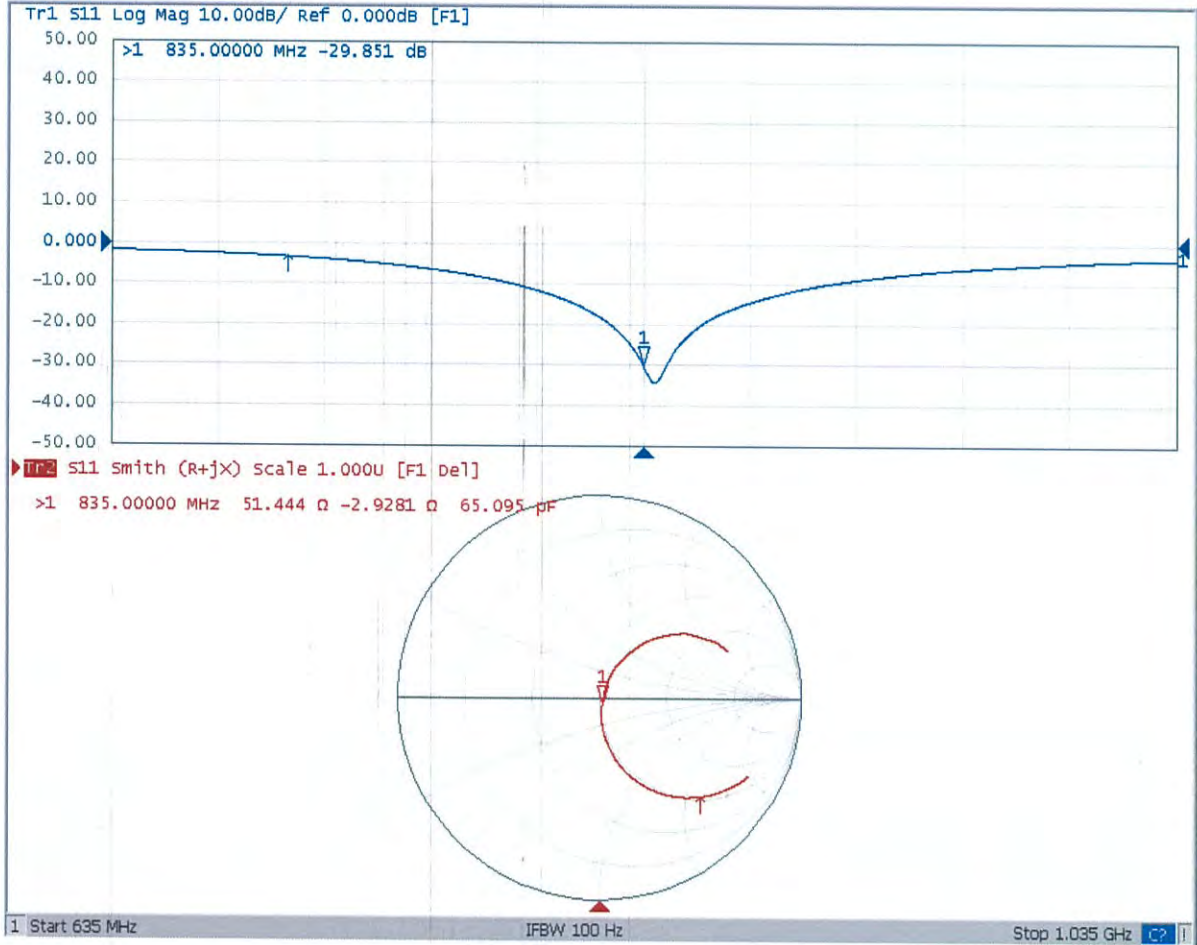


0 dB = 3.27 W/kg = 5.15 dBW/kg



Add: No.52 HuaYuanBei Road, Haidian District, Beijing, 100191, China
Tel: +86-10-62304633-2079 Fax: +86-10-62304633-2504
E-mail: cttl@chinattl.com http://www.chinattl.cn

Impedance Measurement Plot for Head TSL



D835V2 - SN: 4d139 Extended Dipole Calibrations

Referring to KDB 865664 D01, if dipoles are verified in return loss ($< -20\text{dB}$, within 20% of prior calibration), and in impedance (within 5 ohm of prior calibration), the annual calibration is not necessary and the calibration interval can be extended.

D835V2 - SN: 4d139						
835 Head						
Date of Measurement	Return-loss (dB)	Delta (%)	Real Impedance (ohm)	Delta (ohm)	Imaginary Impedance (ohm)	Delta (ohm)
2021.09.17	-29.8		51.4		-2.9	
2022.09.17	-31.6	-6.0	50.0	-1.4	-2.6	0.3

<Justification of the extended calibration>

The return loss is $< -20\text{dB}$, within 20% of prior calibration, and the impedance is within 5 ohm of prior calibration. Therefore the verification result should support extended calibration.

<Dipole Verification Data>

Head 835MHz_2022.0917

