

P09 WLAN5G_802.11a_Left Cheek_Ch140

Communication System: 802.11a; Frequency: 5700 MHz; Duty Cycle: 1:1.05

Medium: HSL5G_1221 Medium parameters used: $f = 5700$ MHz; $\sigma = 5.33$ S/m; $\epsilon_r = 35.993$; $\rho = 1000$ kg/m³

Ambient Temperature : 23.7°C; Liquid Temperature : 22.2°C

DASY5 Configuration:

- Probe: EX3DV4 - SN3873; ConvF(4.5, 4.5, 4.5); Calibrated: 2021/8/25;
- Sensor-Surface: 1.4mm (Mechanical Surface Detection)
- Electronics: DAE4 Sn1389; Calibrated: 2021/10/26
- Phantom: SAM (30deg probe tilt) with CRP v5.0; Type: QD000P40CD; Serial: TP:1781
- Measurement SW: DASY52, Version 52.8 (7); SEMCAD X Version 14.6.10 (7164)

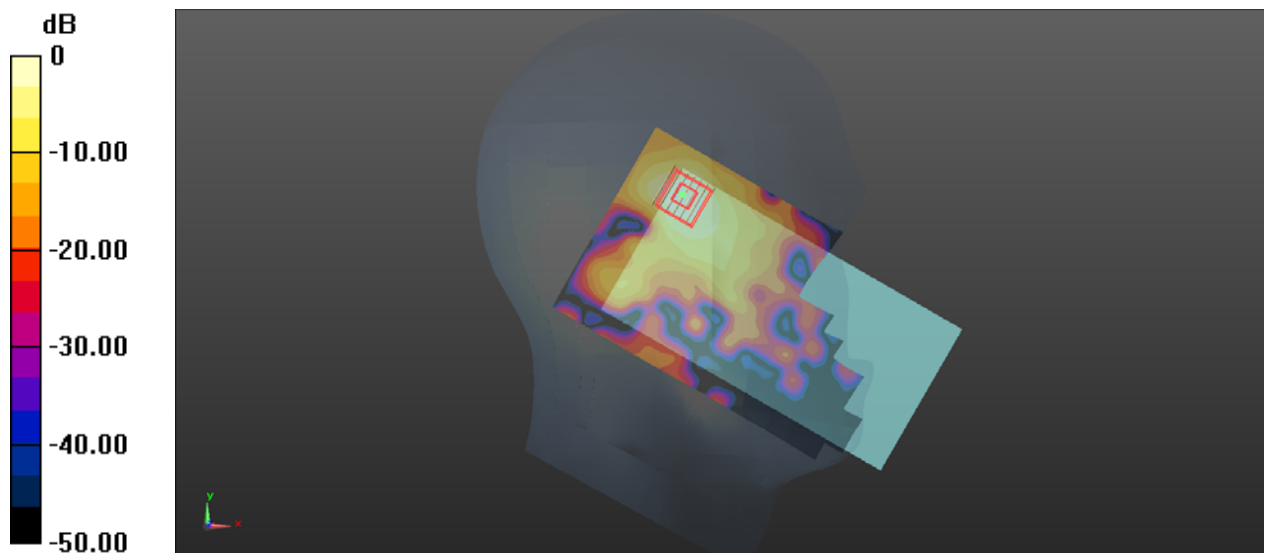
- **Area Scan (111x191x1):** Interpolated grid: $dx=1.000$ mm, $dy=1.000$ mm
Maximum value of SAR (interpolated) = 1.52 W/kg

- **Zoom Scan (7x7x12)/Cube 0:** Measurement grid: $dx=4$ mm, $dy=4$ mm, $dz=2$ mm
Reference Value = 3.857 V/m; Power Drift = -0.06 dB

Peak SAR (extrapolated) = 2.64 W/kg

SAR(1 g) = 0.609 W/kg; SAR(10 g) = 0.199 W/kg

Maximum value of SAR (measured) = 1.53 W/kg



0 dB = 1.53 W/kg

P10 WLAN5G_802.11a_Left Cheek_Ch165

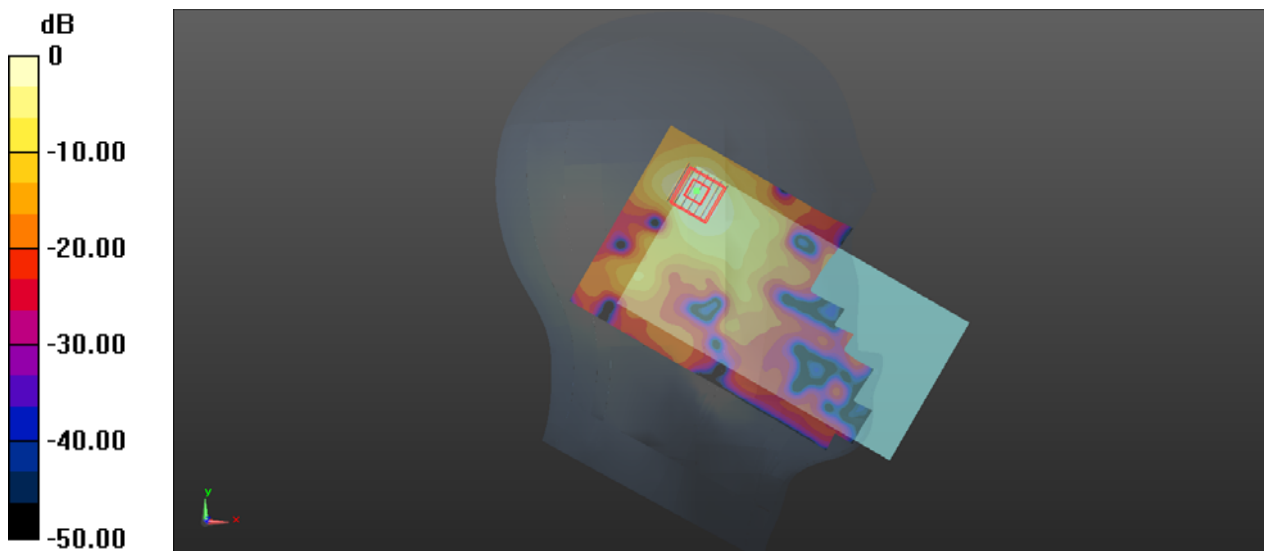
Communication System: 802.11a; Frequency: 5825 MHz; Duty Cycle: 1:1.05
Medium: HSL5G_1222 Medium parameters used: $f = 5825$ MHz; $\sigma = 5.492$ S/m; $\epsilon_r = 35.745$; $\rho = 1000$ kg/m³
Ambient Temperature : 23.3°C; Liquid Temperature : 22.4°C

DASY5 Configuration:

- Probe: EX3DV4 - SN3873; ConvF(4.49, 4.49, 4.49); Calibrated: 2021/8/25;
- Sensor-Surface: 1.4mm (Mechanical Surface Detection)
- Electronics: DAE4 Sn1389; Calibrated: 2021/10/26
- Phantom: SAM (30deg probe tilt) with CRP v5.0; Type: QD000P40CD; Serial: TP:1781
- Measurement SW: DASY52, Version 52.8 (7); SEMCAD X Version 14.6.10 (7164)

- **Area Scan (111x191x1)**: Interpolated grid: dx=1.000 mm, dy=1.000 mm
Maximum value of SAR (interpolated) = 1.91 W/kg

- **Zoom Scan (7x7x12)/Cube 0**: Measurement grid: dx=4mm, dy=4mm, dz=2mm
Reference Value = 3.215 V/m; Power Drift = 0.09 dB
Peak SAR (extrapolated) = 3.27 W/kg
SAR(1 g) = 0.766 W/kg; SAR(10 g) = 0.251 W/kg
Maximum value of SAR (measured) = 1.90 W/kg



0 dB = 1.90 W/kg

P11 BT_GFSK_Left Cheek_Ch0

Communication System: BT; Frequency: 2402 MHz; Duty Cycle: 1:1.29

Medium: HSL2450_1215 Medium parameters used: $f = 2402$ MHz; $\sigma = 1.755$ S/m; $\epsilon_r = 39.515$; $\rho = 1000$ kg/m³

Ambient Temperature : 23.6°C; Liquid Temperature : 22.5°C

DASY5 Configuration:

- Probe: EX3DV4 - SN3873; ConvF(7.88, 7.88, 7.88); Calibrated: 2021/8/25;
- Sensor-Surface: 1.4mm (Mechanical Surface Detection)
- Electronics: DAE4 Sn1389; Calibrated: 2021/10/26
- Phantom: SAM (30deg probe tilt) with CRP v5.0; Type: QD000P40CD; Serial: TP:1781
- Measurement SW: DASY52, Version 52.8 (7); SEMCAD X Version 14.6.10 (7164)

- **Area Scan (101x161x1)**: Interpolated grid: dx=1.200 mm, dy=1.200 mm
 Maximum value of SAR (interpolated) = 0.115 W/kg

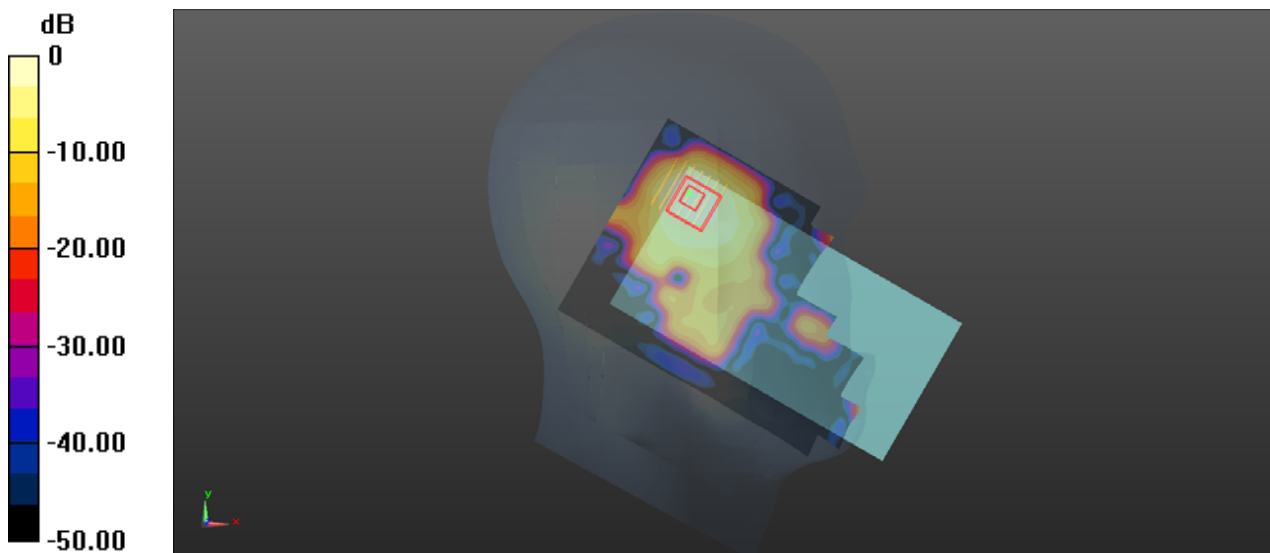
- **Zoom Scan (7x7x7)/Cube 0**: Measurement grid: dx=5mm, dy=5mm, dz=5mm

Reference Value = 2.490 V/m; Power Drift = -0.13 dB

Peak SAR (extrapolated) = 0.136 W/kg

SAR(1 g) = 0.061 W/kg; SAR(10 g) = 0.029 W/kg

Maximum value of SAR (measured) = 0.104 W/kg



0 dB = 0.115 W/kg

P12 GSM850_GPRS10_Rear Face_1cm_Ch251

Communication System: GPRS10; Frequency: 848.8 MHz; Duty Cycle: 1:4.15

Medium: HSL835_1213 Medium parameters used: $f = 849$ MHz; $\sigma = 0.919$ S/m; $\epsilon_r = 42.035$; $\rho = 1000$ kg/m³

Ambient Temperature : 23.2°C; Liquid Temperature : 22.7°C

DASY5 Configuration:

- Probe: EX3DV4 - SN3873; ConvF(9.36, 9.36, 9.36); Calibrated: 2021/8/25;
- Sensor-Surface: 1.4mm (Mechanical Surface Detection)
- Electronics: DAE4 Sn1389; Calibrated: 2021/10/26
- Phantom: SAM (30deg probe tilt) with CRP v5.0; Type: QD000P40CD; Serial: TP:1781
- Measurement SW: DASY52, Version 52.8 (7); SEMCAD X Version 14.6.10 (7164)

- **Area Scan (81x131x1):** Interpolated grid: dx=1.500 mm, dy=1.500 mm

Maximum value of SAR (interpolated) = 0.476 W/kg

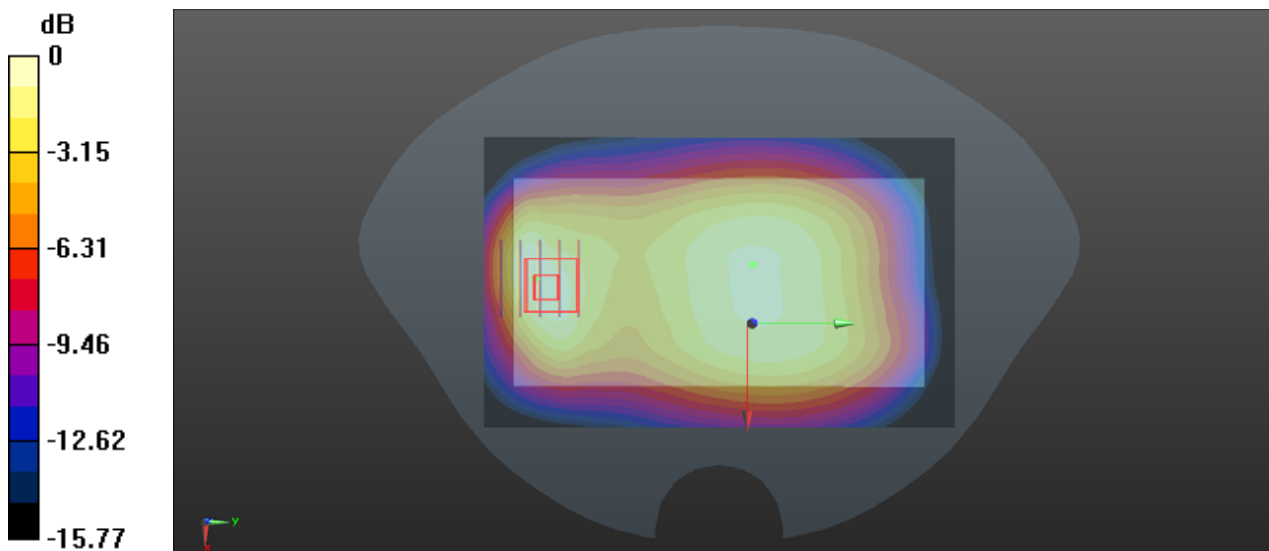
- **Zoom Scan (5x5x7)/Cube 0:** Measurement grid: dx=8mm, dy=8mm, dz=5mm

Reference Value = 18.388 V/m; Power Drift = -0.08 dB

Peak SAR (extrapolated) = 0.564 W/kg

SAR(1 g) = 0.332 W/kg; SAR(10 g) = 0.200 W/kg

Maximum value of SAR (measured) = 0.473 W/kg



0 dB = 0.473 W/kg

P13 GSM1900_GPRS10_Rear Face_1cm_Ch512

Communication System: GPRS10; Frequency: 1850.2 MHz; Duty Cycle: 1:4.15

Medium: HSL1900_1214 Medium parameters used: $f = 1850.2$ MHz; $\sigma = 1.387$ S/m; $\epsilon_r = 40.004$; $\rho = 1000$ kg/m³

Ambient Temperature : 23.5°C; Liquid Temperature : 22.3°C

DASY5 Configuration:

- Probe: EX3DV4 - SN3873; ConvF(8, 8, 8); Calibrated: 2021/8/25;
- Sensor-Surface: 1.4mm (Mechanical Surface Detection)
- Electronics: DAE4 Sn1389; Calibrated: 2021/10/26
- Phantom: SAM (30deg probe tilt) with CRP v5.0; Type: QD000P40CD; Serial: TP:1781
- Measurement SW: DASY52, Version 52.8 (7); SEMCAD X Version 14.6.10 (7164)

- **Area Scan (81x131x1):** Interpolated grid: dx=1.500 mm, dy=1.500 mm

Maximum value of SAR (interpolated) = 1.15 W/kg

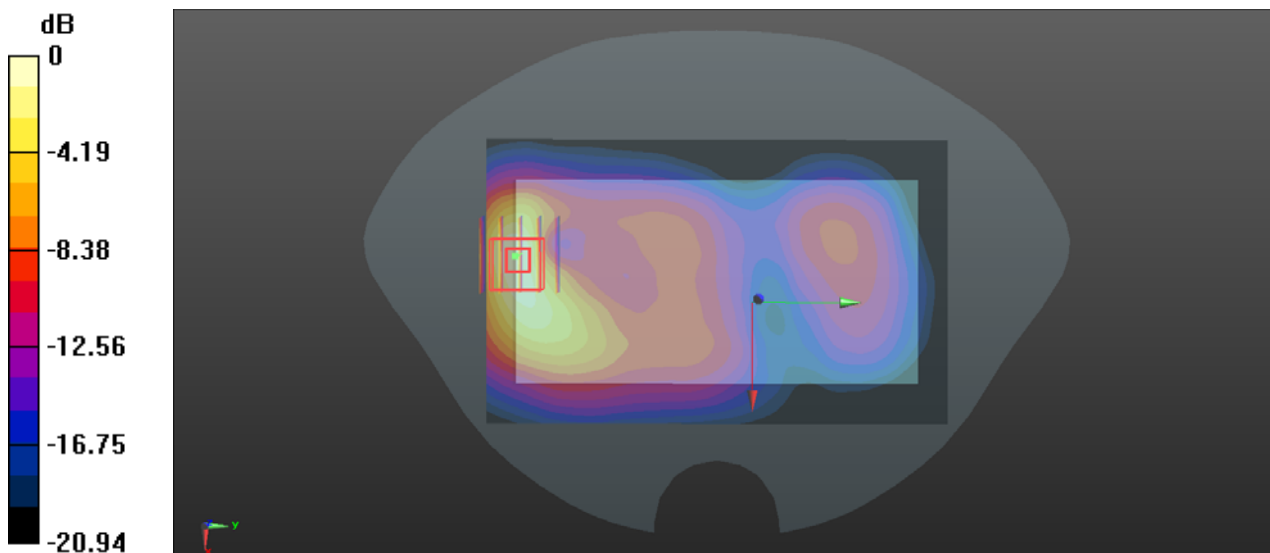
- **Zoom Scan (5x5x7)/Cube 0:** Measurement grid: dx=8mm, dy=8mm, dz=5mm

Reference Value = 7.001 V/m; Power Drift = -0.02 dB

Peak SAR (extrapolated) = 1.35 W/kg

SAR(1 g) = 0.734 W/kg; SAR(10 g) = 0.377 W/kg

Maximum value of SAR (measured) = 1.13 W/kg



0 dB = 1.13 W/kg

P14 WCDMA V_RMC12.2K_Rear Face_1cm_Ch4233

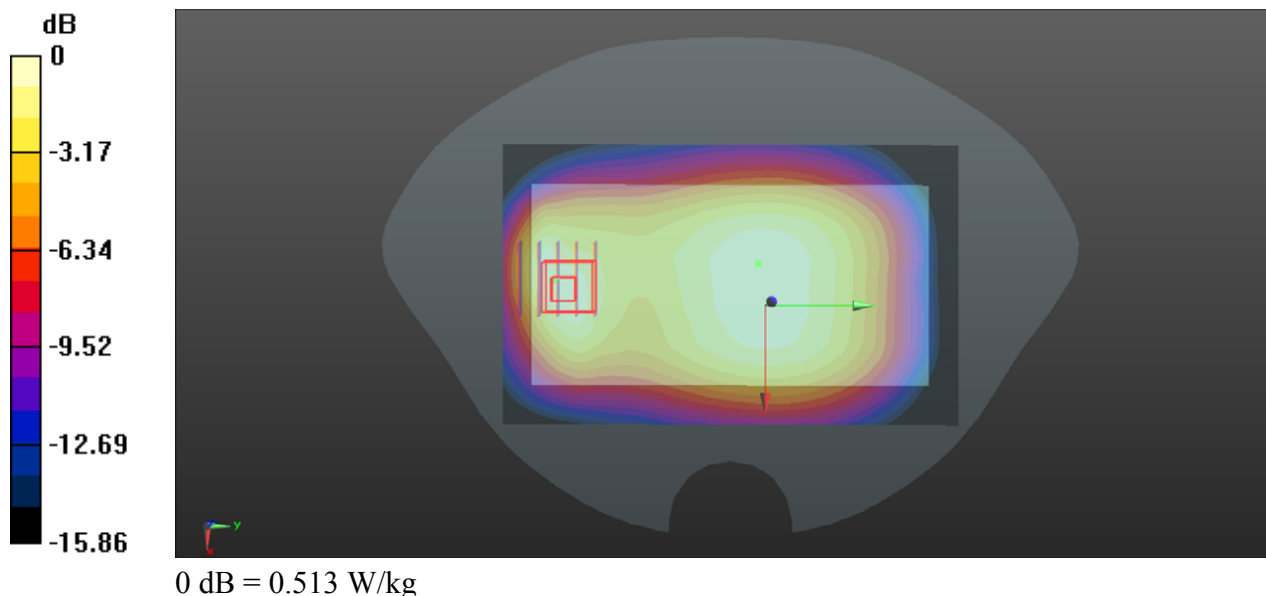
Communication System: WCDMA; Frequency: 846.6 MHz; Duty Cycle: 1:1
 Medium: HSL835_1213 Medium parameters used: $f = 847 \text{ MHz}$; $\sigma = 0.918 \text{ S/m}$; $\epsilon_r = 42.038$; $\rho = 1000 \text{ kg/m}^3$
 Ambient Temperature : 23.2°C ; Liquid Temperature : 22.7°C

DASY5 Configuration:

- Probe: EX3DV4 - SN3873; ConvF(9.36, 9.36, 9.36); Calibrated: 2021/8/25;
- Sensor-Surface: 1.4mm (Mechanical Surface Detection)
- Electronics: DAE4 Sn1389; Calibrated: 2021/10/26
- Phantom: SAM (30deg probe tilt) with CRP v5.0; Type: QD000P40CD; Serial: TP:1781
- Measurement SW: DASY52, Version 52.8 (7); SEMCAD X Version 14.6.10 (7164)

- **Area Scan (81x131x1):** Interpolated grid: $dx=1.500 \text{ mm}$, $dy=1.500 \text{ mm}$
 Maximum value of SAR (interpolated) = 0.520 W/kg

- **Zoom Scan (5x5x7)/Cube 0:** Measurement grid: $dx=8\text{mm}$, $dy=8\text{mm}$, $dz=5\text{mm}$
 Reference Value = 20.552 V/m ; Power Drift = -0.06 dB
 Peak SAR (extrapolated) = 0.617 W/kg
SAR(1 g) = 0.360 W/kg ; SAR(10 g) = 0.217 W/kg
 Maximum value of SAR (measured) = 0.513 W/kg



P15 LTE 5_QPSK10M_Rear Face_1cm_Ch20600_1RB_OS49

Communication System: LTE; Frequency: 844 MHz; Duty Cycle: 1:1

Medium: HSL835_1213 Medium parameters used: $f = 844 \text{ MHz}$; $\sigma = 0.917 \text{ S/m}$; $\epsilon_r = 42.047$; $\rho = 1000 \text{ kg/m}^3$

Ambient Temperature : 23.2°C ; Liquid Temperature : 22.7°C

DASY5 Configuration:

- Probe: EX3DV4 - SN3873; ConvF(9.36, 9.36, 9.36); Calibrated: 2021/8/25;
- Sensor-Surface: 1.4mm (Mechanical Surface Detection)
- Electronics: DAE4 Sn1389; Calibrated: 2021/10/26
- Phantom: SAM (30deg probe tilt) with CRP v5.0; Type: QD000P40CD; Serial: TP:1781
- Measurement SW: DASY52, Version 52.8 (7); SEMCAD X Version 14.6.10 (7164)

- **Area Scan (81x131x1):** Interpolated grid: $dx=1.500 \text{ mm}$, $dy=1.500 \text{ mm}$

Maximum value of SAR (interpolated) = 0.669 W/kg

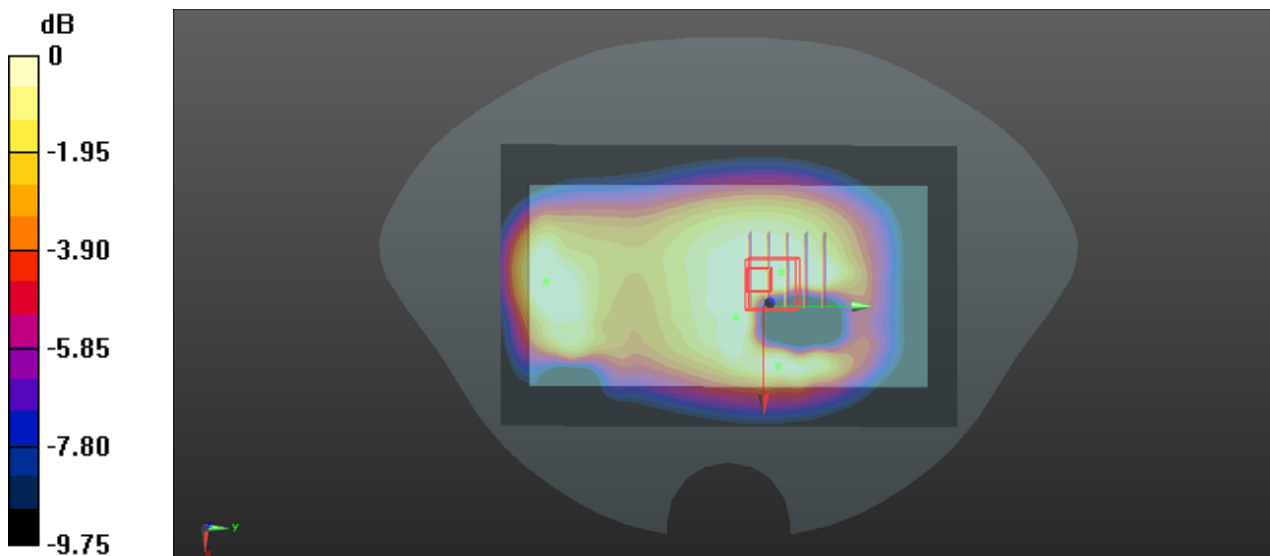
- **Zoom Scan (5x5x7)/Cube 0:** Measurement grid: $dx=8\text{mm}$, $dy=8\text{mm}$, $dz=5\text{mm}$

Reference Value = 19.607 V/m ; Power Drift = 0.05 dB

Peak SAR (extrapolated) = 0.470 W/kg

SAR(1 g) = 0.360 W/kg ; SAR(10 g) = 0.270 W/kg

Maximum value of SAR (measured) = 0.432 W/kg



0 dB = 0.432 W/kg

P16 LTE 7_QPSK20M_Rear Face_1cm_Ch21350_50RB_OS0

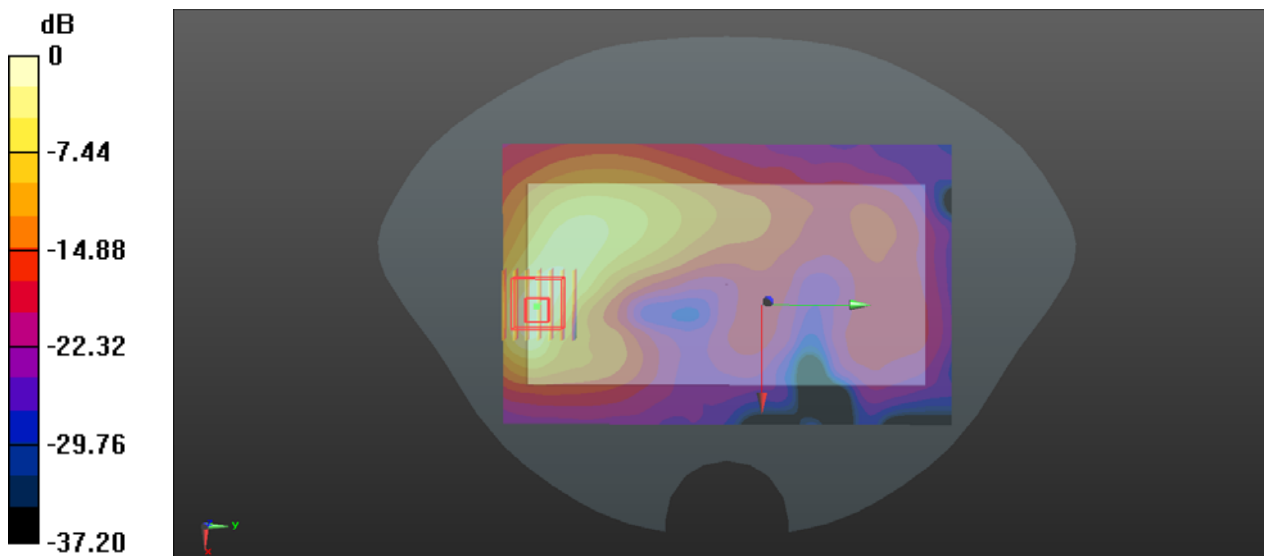
Communication System: LTE; Frequency: 2560 MHz; Duty Cycle: 1:1
Medium: HSL2600_1217 Medium parameters used: $f = 2560$ MHz; $\sigma = 1.87$ S/m; $\epsilon_r = 39.433$; $\rho = 1000$ kg/m³
Ambient Temperature : 23.5°C; Liquid Temperature : 22.6°C

DASY5 Configuration:

- Probe: EX3DV4 - SN3873; ConvF(7.66, 7.66, 7.66); Calibrated: 2021/8/25;
- Sensor-Surface: 1.4mm (Mechanical Surface Detection)
- Electronics: DAE4 Sn1389; Calibrated: 2021/10/26
- Phantom: SAM (30deg probe tilt) with CRP v5.0; Type: QD000P40CD; Serial: TP:1781
- Measurement SW: DASY52, Version 52.8 (7); SEMCAD X Version 14.6.10 (7164)

- **Area Scan (101x161x1)**: Interpolated grid: dx=1.200 mm, dy=1.200 mm
Maximum value of SAR (interpolated) = 1.32 W/kg

- **Zoom Scan (7x7x7)/Cube 0**: Measurement grid: dx=5mm, dy=5mm, dz=5mm
Reference Value = 2.295 V/m; Power Drift = -0.03 dB
Peak SAR (extrapolated) = 1.76 W/kg
SAR(1 g) = 0.813 W/kg; SAR(10 g) = 0.364 W/kg
Maximum value of SAR (measured) = 1.36 W/kg



0 dB = 1.36 W/kg

P17 LTE 41_QPSK20M_Rear Face_1cm_Ch41490_1RB_OS99

Communication System: LTE TDD; Frequency: 2680 MHz; Duty Cycle: 1:1.59

Medium: HSL2600_1217 Medium parameters used: $f = 2680$ MHz; $\sigma = 1.962$ S/m; $\epsilon_r = 39.24$; $\rho = 1000$ kg/m³

Ambient Temperature : 23.5°C; Liquid Temperature : 22.6°C

DASY5 Configuration:

- Probe: EX3DV4 - SN3873; ConvF(7.66, 7.66, 7.66); Calibrated: 2021/8/25;
- Sensor-Surface: 1.4mm (Mechanical Surface Detection)
- Electronics: DAE4 Sn1389; Calibrated: 2021/10/26
- Phantom: SAM (30deg probe tilt) with CRP v5.0; Type: QD000P40CD; Serial: TP:1781
- Measurement SW: DASY52, Version 52.8 (7); SEMCAD X Version 14.6.10 (7164)

- **Area Scan (101x161x1)**: Interpolated grid: dx=1.200 mm, dy=1.200 mm
Maximum value of SAR (interpolated) = 0.499 W/kg

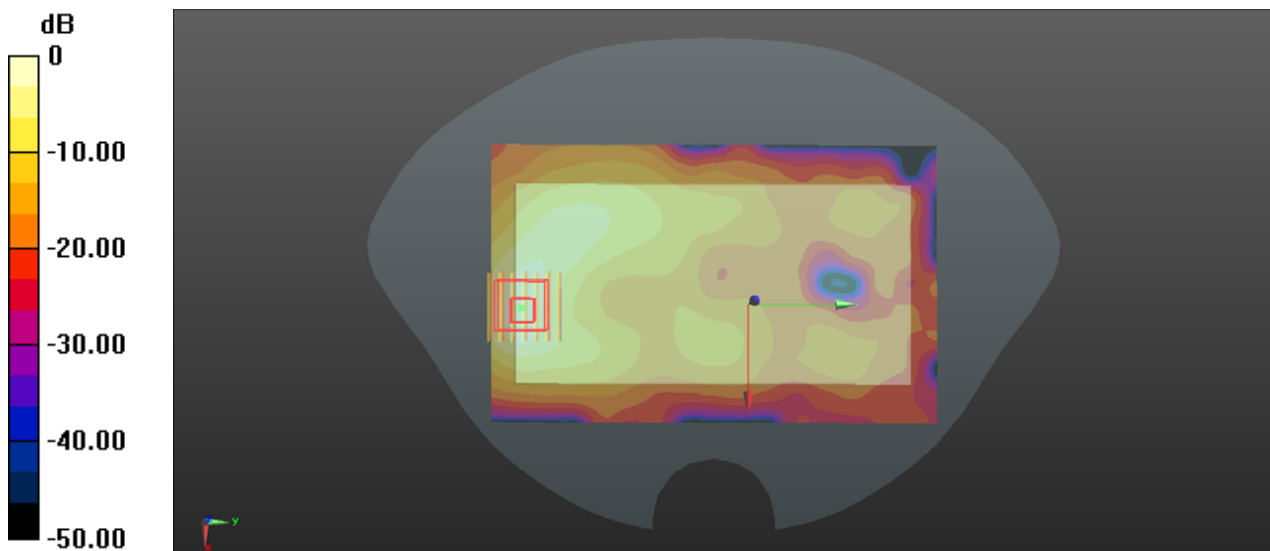
- **Zoom Scan (7x7x7)/Cube 0**: Measurement grid: dx=5mm, dy=5mm, dz=5mm

Reference Value = 1.761 V/m; Power Drift = -0.04 dB

Peak SAR (extrapolated) = 0.640 W/kg

SAR(1 g) = 0.292 W/kg; SAR(10 g) = 0.130 W/kg

Maximum value of SAR (measured) = 0.506 W/kg



0 dB = 0.506 W/kg

P18 WLAN2.4G_802.11b_Rear Face_1cm_Ch11

Communication System: 802.11b; Frequency: 2462 MHz; Duty Cycle: 1:1.01

Medium: HSL2450_1215 Medium parameters used: $f = 2462$ MHz; $\sigma = 1.794$ S/m; $\epsilon_r = 39.429$; $\rho = 1000$ kg/m³

Ambient Temperature : 23.6°C; Liquid Temperature : 22.5°C

DASY5 Configuration:

- Probe: EX3DV4 - SN3873; ConvF(7.88, 7.88, 7.88); Calibrated: 2021/8/25;
- Sensor-Surface: 1.4mm (Mechanical Surface Detection)
- Electronics: DAE4 Sn1389; Calibrated: 2021/10/26
- Phantom: SAM (30deg probe tilt) with CRP v5.0; Type: QD000P40CD; Serial: TP:1781
- Measurement SW: DASY52, Version 52.8 (7); SEMCAD X Version 14.6.10 (7164)

- **Area Scan (91x161x1):** Interpolated grid: dx=1.200 mm, dy=1.200 mm
 Maximum value of SAR (interpolated) = 0.332 W/kg

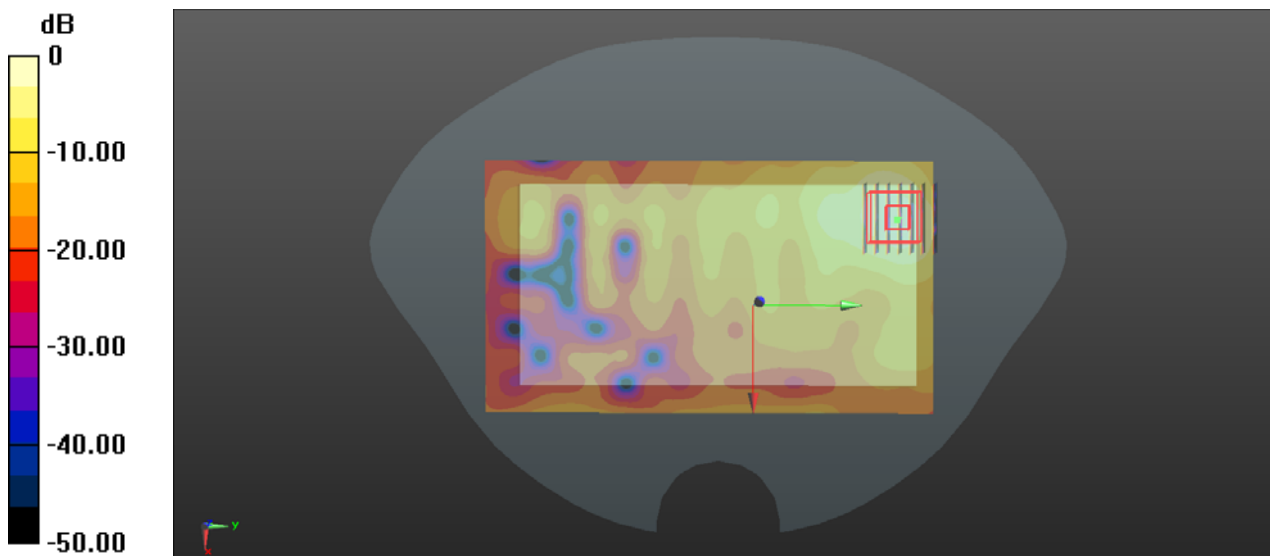
- **Zoom Scan (7x7x7)/Cube 0:** Measurement grid: dx=5mm, dy=5mm, dz=5mm

Reference Value = 4.805 V/m; Power Drift = -0.02 dB

Peak SAR (extrapolated) = 0.611 W/kg

SAR(1 g) = 0.132 W/kg; SAR(10 g) = 0.048 W/kg

Maximum value of SAR (measured) = 0.325 W/kg



0 dB = 0.325 W/kg

P19 WLAN5G_802.11a_Rear Face_1cm_Ch64

Communication System: 802.11a; Frequency: 5320 MHz; Duty Cycle: 1:1.05

Medium: HSL5G_1220 Medium parameters used: $f = 5320$ MHz; $\sigma = 4.853$ S/m; $\epsilon_r = 36.84$; $\rho = 1000$ kg/m³

Ambient Temperature : 23.4°C; Liquid Temperature : 22.1°C

DASY5 Configuration:

- Probe: EX3DV4 - SN3873; ConvF(4.8, 4.8, 4.8); Calibrated: 2021/8/25;
- Sensor-Surface: 1.4mm (Mechanical Surface Detection)
- Electronics: DAE4 Sn1389; Calibrated: 2021/10/26
- Phantom: SAM (30deg probe tilt) with CRP v5.0; Type: QD000P40CD; Serial: TP:1781
- Measurement SW: DASY52, Version 52.8 (7); SEMCAD X Version 14.6.10 (7164)

- **Area Scan (111x201x1)**: Interpolated grid: dx=1.000 mm, dy=1.000 mm

Maximum value of SAR (interpolated) = 0.836 W/kg

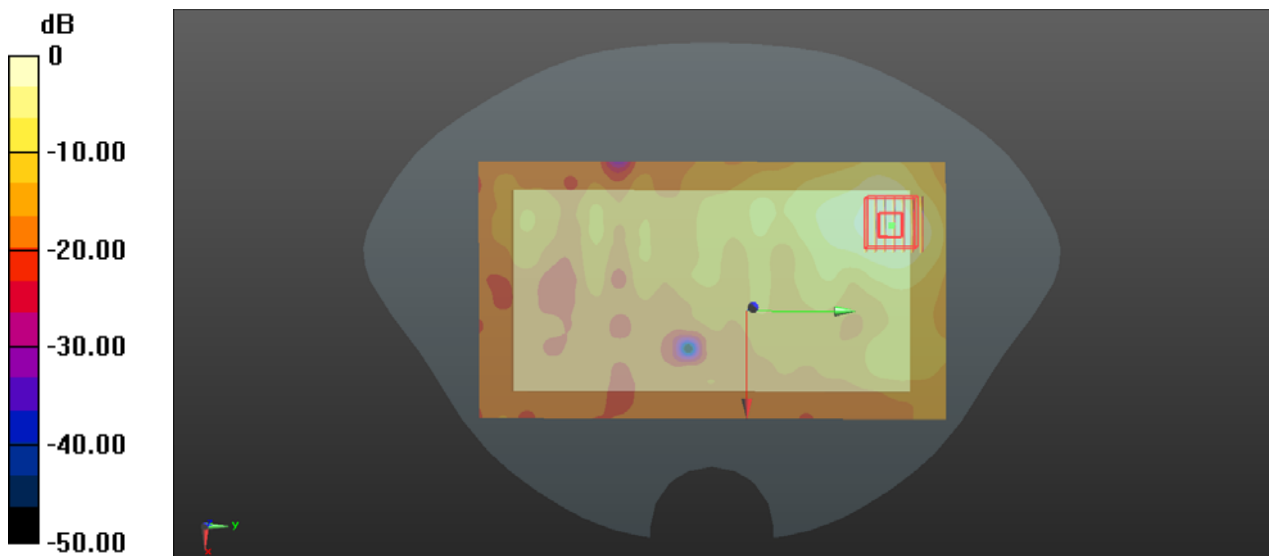
- **Zoom Scan (7x7x12)/Cube 0**: Measurement grid: dx=4mm, dy=4mm, dz=2mm

Reference Value = 2.233 V/m; Power Drift = -0.07 dB

Peak SAR (extrapolated) = 1.45 W/kg

SAR(1 g) = 0.350 W/kg; SAR(10 g) = 0.125 W/kg

Maximum value of SAR (measured) = 0.821 W/kg



0 dB = 0.821 W/kg

P20 WLAN5G_802.11a_Rear Face_1cm_Ch140

Communication System: 802.11a; Frequency: 5700 MHz; Duty Cycle: 1:1.05

Medium: HSL5G_1221 Medium parameters used: $f = 5700$ MHz; $\sigma = 5.33$ S/m; $\epsilon_r = 35.993$; $\rho = 1000$ kg/m³

Ambient Temperature : 23.7°C; Liquid Temperature : 22.2°C

DASY5 Configuration:

- Probe: EX3DV4 - SN3873; ConvF(4.5, 4.5, 4.5); Calibrated: 2021/8/25;
- Sensor-Surface: 1.4mm (Mechanical Surface Detection)
- Electronics: DAE4 Sn1389; Calibrated: 2021/10/26
- Phantom: SAM (30deg probe tilt) with CRP v5.0; Type: QD000P40CD; Serial: TP:1781
- Measurement SW: DASY52, Version 52.8 (7); SEMCAD X Version 14.6.10 (7164)

- **Area Scan (111x201x1)**: Interpolated grid: dx=1.000 mm, dy=1.000 mm

Maximum value of SAR (interpolated) = 0.984 W/kg

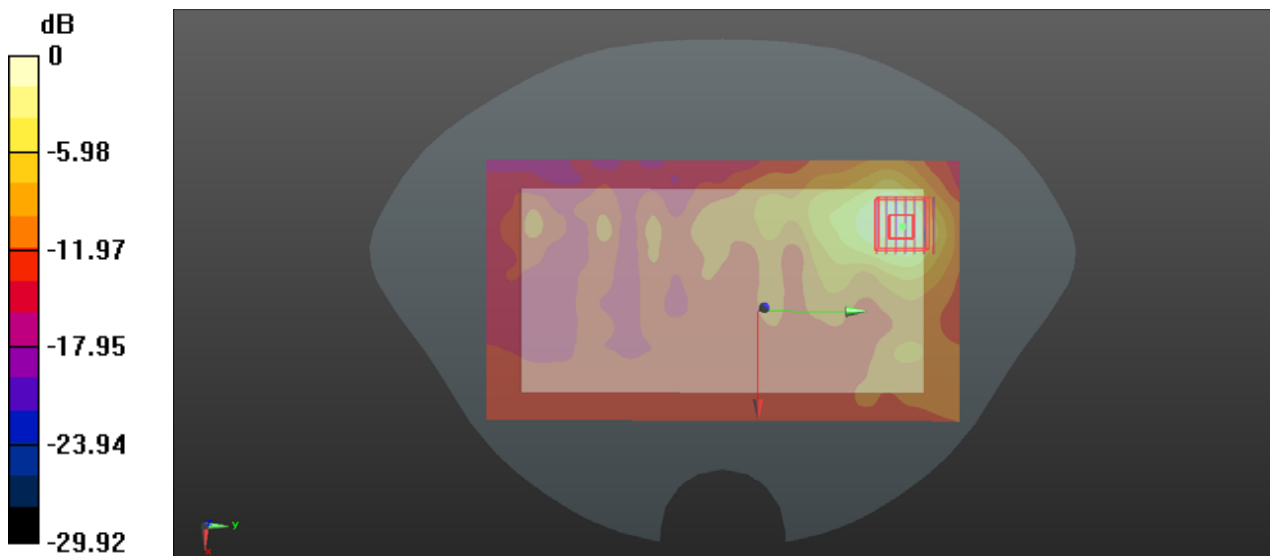
- **Zoom Scan (7x7x12)/Cube 0**: Measurement grid: dx=4mm, dy=4mm, dz=2mm

Reference Value = 4.310 V/m; Power Drift = -0.03 dB

Peak SAR (extrapolated) = 1.66 W/kg

SAR(1 g) = 0.403 W/kg; SAR(10 g) = 0.150 W/kg

Maximum value of SAR (measured) = 0.964 W/kg



0 dB = 0.964 W/kg

P21 WLAN5G_802.11a_Rear Face_1cm_Ch157

Communication System: 802.11a; Frequency: 5785 MHz; Duty Cycle: 1:1.05

Medium: HSL5G_1222 Medium parameters used: $f = 5785$ MHz; $\sigma = 5.417$ S/m; $\epsilon_r = 35.84$; $\rho = 1000$ kg/m³

Ambient Temperature : 23.3°C; Liquid Temperature : 22.4°C

DASY5 Configuration:

- Probe: EX3DV4 - SN3873; ConvF(4.49, 4.49, 4.49); Calibrated: 2021/8/25;
- Sensor-Surface: 1.4mm (Mechanical Surface Detection)
- Electronics: DAE4 Sn1389; Calibrated: 2021/10/26
- Phantom: SAM (30deg probe tilt) with CRP v5.0; Type: QD000P40CD; Serial: TP:1781
- Measurement SW: DASY52, Version 52.8 (7); SEMCAD X Version 14.6.10 (7164)

- **Area Scan (111x201x1)**: Interpolated grid: dx=1.000 mm, dy=1.000 mm

Maximum value of SAR (interpolated) = 1.05 W/kg

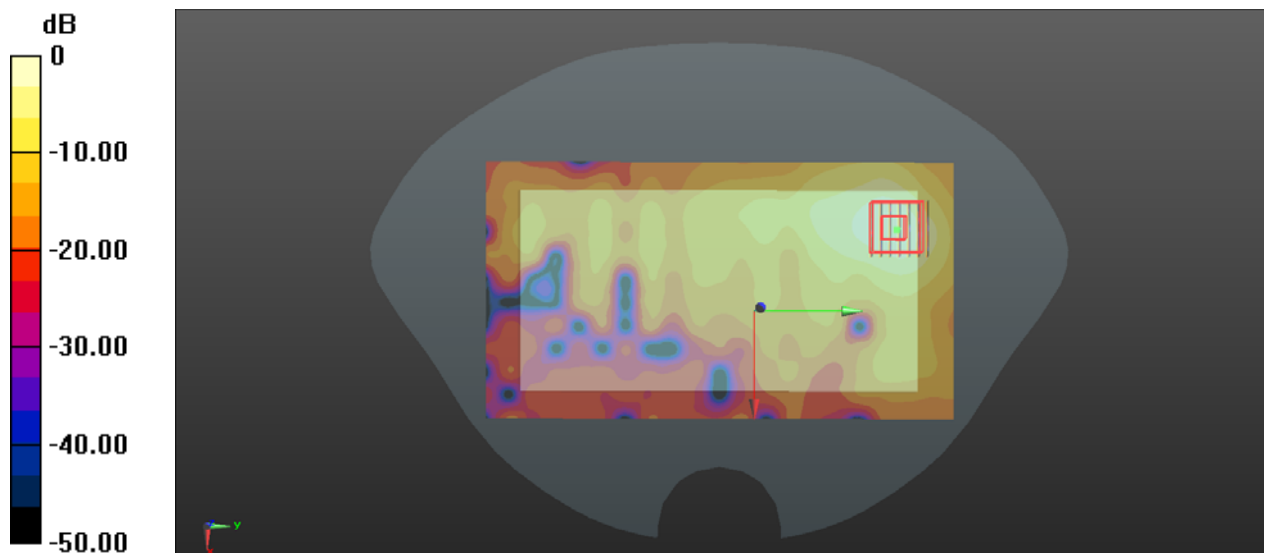
- **Zoom Scan (7x7x12)/Cube 0**: Measurement grid: dx=4mm, dy=4mm, dz=2mm

Reference Value = 1.882 V/m; Power Drift = -0.09 dB

Peak SAR (extrapolated) = 1.73 W/kg

SAR(1 g) = 0.424 W/kg; SAR(10 g) = 0.152 W/kg

Maximum value of SAR (measured) = 1.00 W/kg



0 dB = 1.00 W/kg

P22 BT_GFSK_Rear Face_1cm_Ch0

Communication System: BT; Frequency: 2402 MHz; Duty Cycle: 1:1.29

Medium: HSL2450_1215 Medium parameters used: $f = 2402$ MHz; $\sigma = 1.755$ S/m; $\epsilon_r = 39.515$; $\rho = 1000$ kg/m³

Ambient Temperature : 23.6°C; Liquid Temperature : 22.5°C

DASY5 Configuration:

- Probe: EX3DV4 - SN3873; ConvF(7.88, 7.88, 7.88); Calibrated: 2021/8/25;
- Sensor-Surface: 1.4mm (Mechanical Surface Detection)
- Electronics: DAE4 Sn1389; Calibrated: 2021/10/26
- Phantom: SAM (30deg probe tilt) with CRP v5.0; Type: QD000P40CD; Serial: TP:1781
- Measurement SW: DASY52, Version 52.8 (7); SEMCAD X Version 14.6.10 (7164)

- **Area Scan (91x161x1)**: Interpolated grid: dx=1.200 mm, dy=1.200 mm

Maximum value of SAR (interpolated) = 0.0346 W/kg

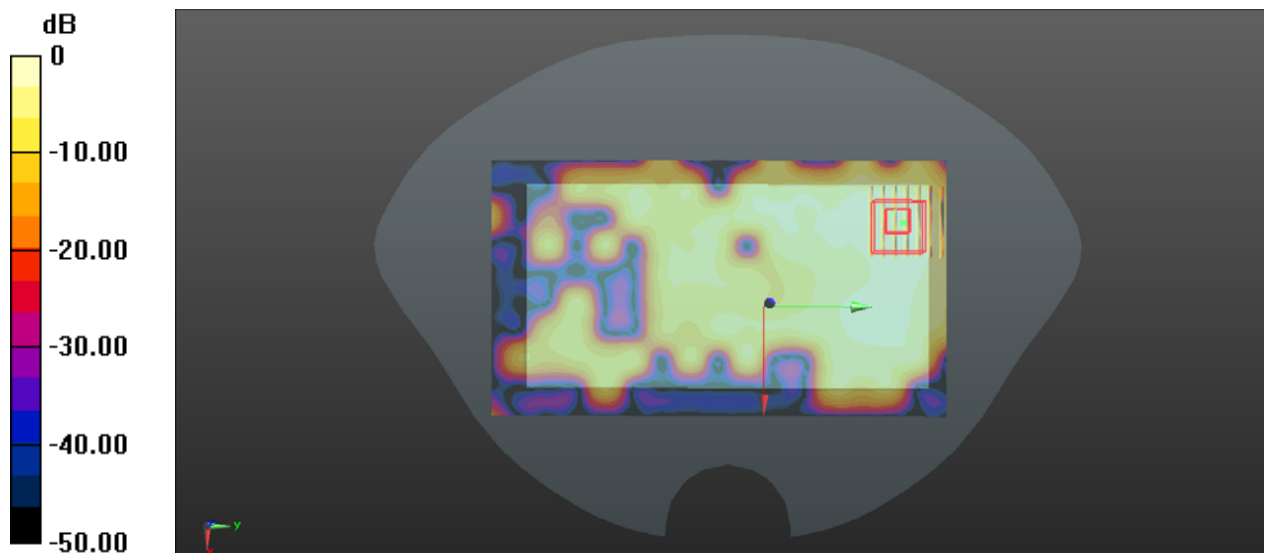
- **Zoom Scan (7x7x7)/Cube 0**: Measurement grid: dx=5mm, dy=5mm, dz=5mm

Reference Value = 1.406 V/m; Power Drift = 0.17 dB

Peak SAR (extrapolated) = 0.0430 W/kg

SAR(1 g) = 0.019 W/kg; SAR(10 g) = 0.00891 W/kg

Maximum value of SAR (measured) = 0.0337 W/kg



P23 GSM850_GPRS10_Rear Face_1cm_Ch251

Communication System: GPRS10; Frequency: 848.8 MHz; Duty Cycle: 1:4.15

Medium: HSL835_1213 Medium parameters used: $f = 849$ MHz; $\sigma = 0.919$ S/m; $\epsilon_r = 42.035$; $\rho = 1000$ kg/m³

Ambient Temperature : 23.2°C; Liquid Temperature : 22.7°C

DASY5 Configuration:

- Probe: EX3DV4 - SN3873; ConvF(9.36, 9.36, 9.36); Calibrated: 2021/8/25;
- Sensor-Surface: 1.4mm (Mechanical Surface Detection)
- Electronics: DAE4 Sn1389; Calibrated: 2021/10/26
- Phantom: SAM (30deg probe tilt) with CRP v5.0; Type: QD000P40CD; Serial: TP:1781
- Measurement SW: DASY52, Version 52.8 (7); SEMCAD X Version 14.6.10 (7164)

- **Area Scan (81x131x1)**: Interpolated grid: dx=1.500 mm, dy=1.500 mm

Maximum value of SAR (interpolated) = 0.476 W/kg

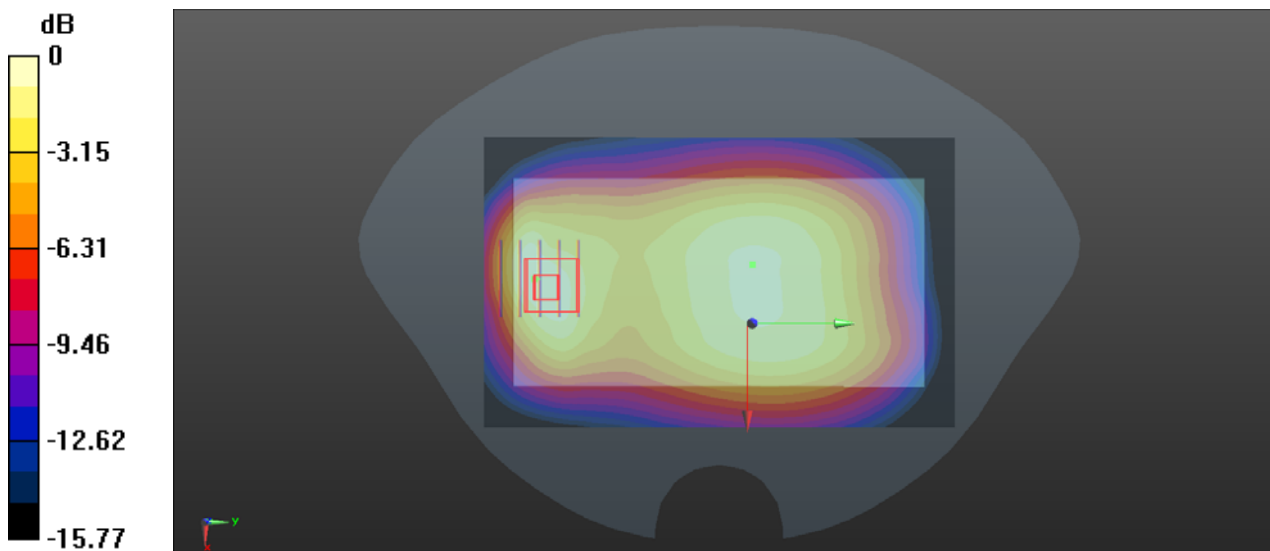
- **Zoom Scan (5x5x7)/Cube 0**: Measurement grid: dx=8mm, dy=8mm, dz=5mm

Reference Value = 18.388 V/m; Power Drift = -0.08 dB

Peak SAR (extrapolated) = 0.564 W/kg

SAR(1 g) = 0.332 W/kg; SAR(10 g) = 0.200 W/kg

Maximum value of SAR (measured) = 0.473 W/kg



0 dB = 0.473 W/kg

P24 GSM1900_GPRS10_Bottom Side_1cm_Ch661

Communication System: GPRS10; Frequency: 1880 MHz; Duty Cycle: 1:4.15

Medium: HSL1900_1214 Medium parameters used: $f = 1880$ MHz; $\sigma = 1.404$ S/m; $\epsilon_r = 39.936$; $\rho = 1000$ kg/m³

Ambient Temperature : 23.5°C; Liquid Temperature : 22.3°C

DASY5 Configuration:

- Probe: EX3DV4 - SN3873; ConvF(8, 8, 8); Calibrated: 2021/8/25;
- Sensor-Surface: 1.4mm (Mechanical Surface Detection)
- Electronics: DAE4 Sn1389; Calibrated: 2021/10/26
- Phantom: SAM (30deg probe tilt) with CRP v5.0; Type: QD000P40CD; Serial: TP:1781
- Measurement SW: DASY52, Version 52.8 (7); SEMCAD X Version 14.6.10 (7164)

- **Area Scan (41x81x1)**: Interpolated grid: dx=1.500 mm, dy=1.500 mm

Maximum value of SAR (interpolated) = 1.32 W/kg

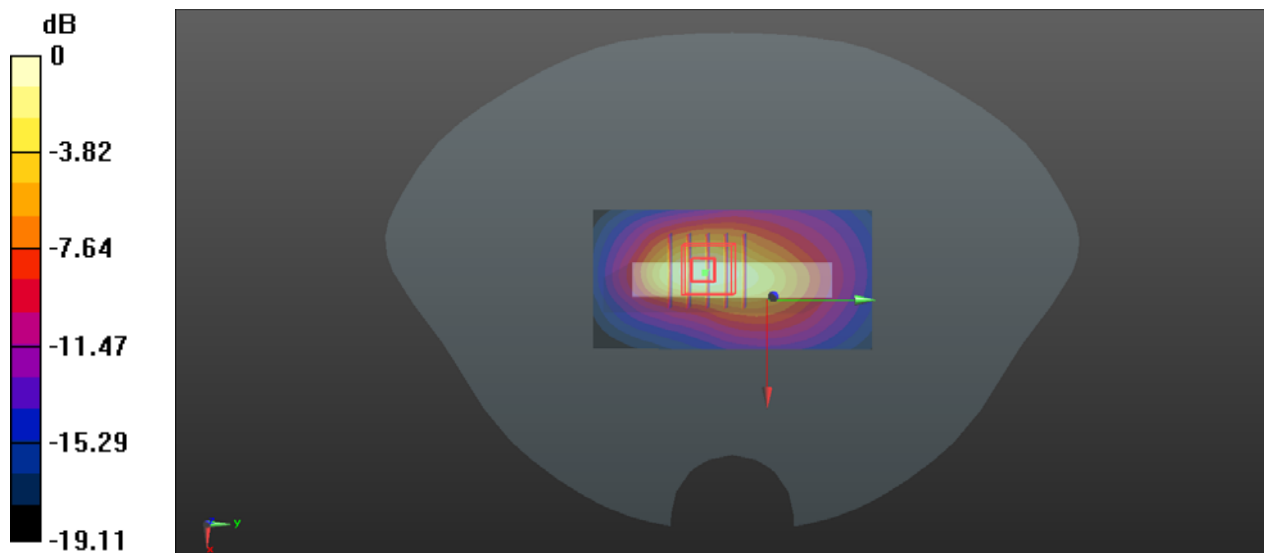
- **Zoom Scan (5x5x7)/Cube 0**: Measurement grid: dx=8mm, dy=8mm, dz=5mm

Reference Value = 22.806 V/m; Power Drift = -0.01 dB

Peak SAR (extrapolated) = 1.51 W/kg

SAR(1 g) = 0.830 W/kg; SAR(10 g) = 0.428 W/kg

Maximum value of SAR (measured) = 1.28 W/kg



0 dB = 1.28 W/kg

P25 WCDMA V_RMC12.2K_Rear Face_1cm_Ch4233

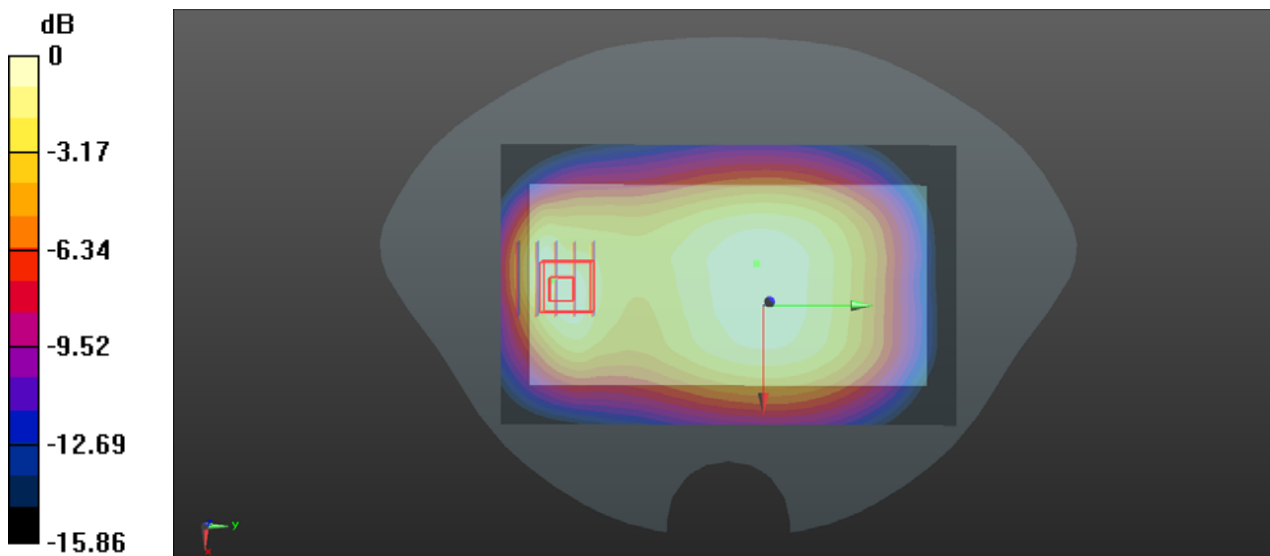
Communication System: WCDMA; Frequency: 846.6 MHz; Duty Cycle: 1:1
 Medium: HSL835_1213 Medium parameters used: $f = 847$ MHz; $\sigma = 0.918$ S/m; $\epsilon_r = 42.038$; $\rho = 1000$ kg/m³
 Ambient Temperature : 23.2°C; Liquid Temperature : 22.7°C

DASY5 Configuration:

- Probe: EX3DV4 - SN3873; ConvF(9.36, 9.36, 9.36); Calibrated: 2021/8/25;
- Sensor-Surface: 1.4mm (Mechanical Surface Detection)
- Electronics: DAE4 Sn1389; Calibrated: 2021/10/26
- Phantom: SAM (30deg probe tilt) with CRP v5.0; Type: QD000P40CD; Serial: TP:1781
- Measurement SW: DASY52, Version 52.8 (7); SEMCAD X Version 14.6.10 (7164)

- **Area Scan (81x131x1):** Interpolated grid: dx=1.500 mm, dy=1.500 mm
 Maximum value of SAR (interpolated) = 0.520 W/kg

- **Zoom Scan (5x5x7)/Cube 0:** Measurement grid: dx=8mm, dy=8mm, dz=5mm
 Reference Value = 20.552 V/m; Power Drift = -0.06 dB
 Peak SAR (extrapolated) = 0.617 W/kg
SAR(1 g) = 0.360 W/kg; SAR(10 g) = 0.217 W/kg
 Maximum value of SAR (measured) = 0.513 W/kg



0 dB = 0.513 W/kg

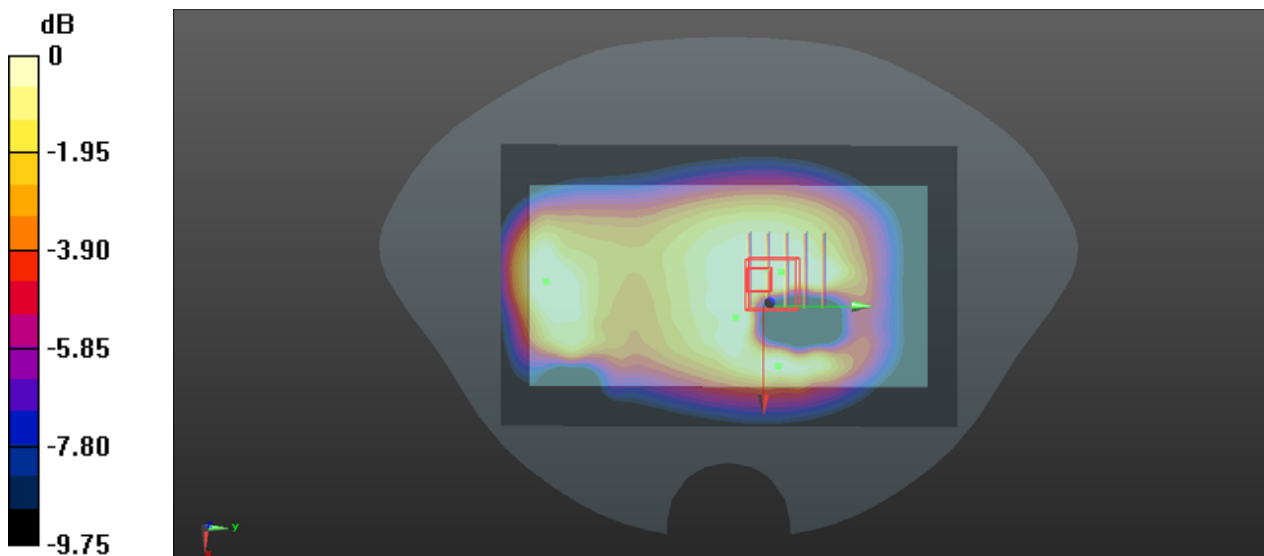
P26 LTE 5_QPSK10M_Rear Face_1cm_Ch20600_1RB_OS49

Communication System: LTE; Frequency: 844 MHz; Duty Cycle: 1:1
Medium: HSL835_1213 Medium parameters used: $f = 844 \text{ MHz}$; $\sigma = 0.917 \text{ S/m}$; $\epsilon_r = 42.047$; $\rho = 1000 \text{ kg/m}^3$
Ambient Temperature : 23.2°C ; Liquid Temperature : 22.7°C

DASY5 Configuration:
- Probe: EX3DV4 - SN3873; ConvF(9.36, 9.36, 9.36); Calibrated: 2021/8/25;
- Sensor-Surface: 1.4mm (Mechanical Surface Detection)
- Electronics: DAE4 Sn1389; Calibrated: 2021/10/26
- Phantom: SAM (30deg probe tilt) with CRP v5.0; Type: QD000P40CD; Serial: TP:1781
- Measurement SW: DASY52, Version 52.8 (7); SEMCAD X Version 14.6.10 (7164)

- **Area Scan (81x131x1)**: Interpolated grid: $dx=1.500 \text{ mm}$, $dy=1.500 \text{ mm}$
Maximum value of SAR (interpolated) = 0.669 W/kg

- **Zoom Scan (5x5x7)/Cube 0**: Measurement grid: $dx=8\text{mm}$, $dy=8\text{mm}$, $dz=5\text{mm}$
Reference Value = 19.607 V/m ; Power Drift = 0.05 dB
Peak SAR (extrapolated) = 0.470 W/kg
SAR(1 g) = 0.360 W/kg ; SAR(10 g) = 0.270 W/kg
Maximum value of SAR (measured) = 0.432 W/kg



0 dB = 0.432 W/kg

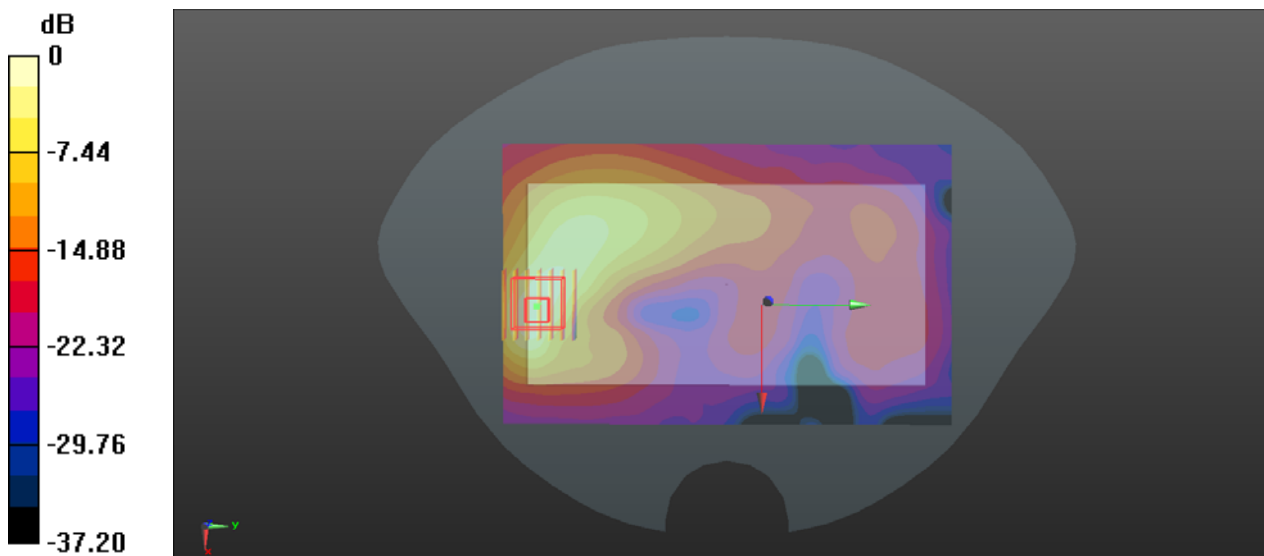
P27 LTE 7_QPSK20M_Rear Face_1cm_Ch21350_50RB_OS0

Communication System: LTE; Frequency: 2560 MHz; Duty Cycle: 1:1
Medium: HSL2600_1217 Medium parameters used: $f = 2560$ MHz; $\sigma = 1.87$ S/m; $\epsilon_r = 39.433$; $\rho = 1000$ kg/m³
Ambient Temperature : 23.5°C ; Liquid Temperature : 22.6°C

- DASY5 Configuration:
- Probe: EX3DV4 - SN3873; ConvF(7.66, 7.66, 7.66); Calibrated: 2021/8/25;
 - Sensor-Surface: 1.4mm (Mechanical Surface Detection)
 - Electronics: DAE4 Sn1389; Calibrated: 2021/10/26
 - Phantom: SAM (30deg probe tilt) with CRP v5.0; Type: QD000P40CD; Serial: TP:1781
 - Measurement SW: DASY52, Version 52.8 (7); SEMCAD X Version 14.6.10 (7164)

- **Area Scan (101x161x1)**: Interpolated grid: dx=1.200 mm, dy=1.200 mm
Maximum value of SAR (interpolated) = 1.32 W/kg

- **Zoom Scan (7x7x7)/Cube 0**: Measurement grid: dx=5mm, dy=5mm, dz=5mm
Reference Value = 2.295 V/m; Power Drift = -0.03 dB
Peak SAR (extrapolated) = 1.76 W/kg
SAR(1 g) = 0.813 W/kg; SAR(10 g) = 0.364 W/kg
Maximum value of SAR (measured) = 1.36 W/kg



0 dB = 1.36 W/kg

P28 LTE 41_QPSK20M_Bottom Side_1cm_Ch41490_1RB_OS99

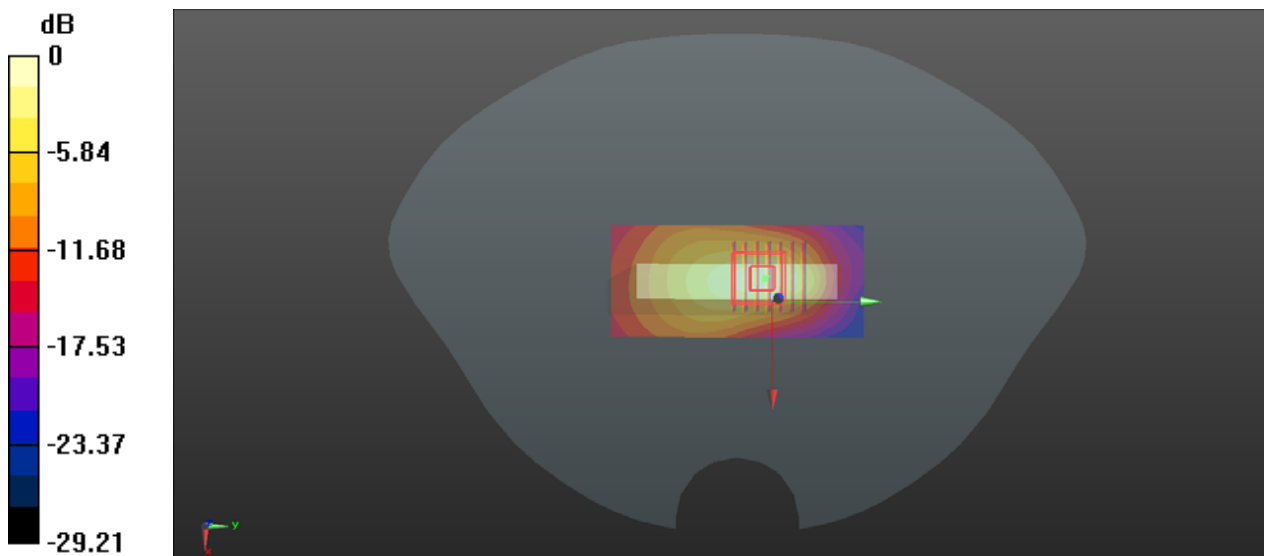
Communication System: LTE TDD; Frequency: 2680 MHz; Duty Cycle: 1:1.59
Medium: HSL2600_1217 Medium parameters used: $f = 2680$ MHz; $\sigma = 1.962$ S/m; $\epsilon_r = 39.24$; $\rho = 1000$ kg/m³
Ambient Temperature : 23.5°C; Liquid Temperature : 22.6°C

DASY5 Configuration:

- Probe: EX3DV4 - SN3873; ConvF(7.66, 7.66, 7.66); Calibrated: 2021/8/25;
- Sensor-Surface: 1.4mm (Mechanical Surface Detection)
- Electronics: DAE4 Sn1389; Calibrated: 2021/10/26
- Phantom: SAM (30deg probe tilt) with CRP v5.0; Type: QD000P40CD; Serial: TP:1781
- Measurement SW: DASY52, Version 52.8 (7); SEMCAD X Version 14.6.10 (7164)

- **Area Scan (41x91x1):** Interpolated grid: dx=1.200 mm, dy=1.200 mm
Maximum value of SAR (interpolated) = 0.604 W/kg

- **Zoom Scan (7x7x7)/Cube 0:** Measurement grid: dx=5mm, dy=5mm, dz=5mm
Reference Value = 12.600 V/m; Power Drift = -0.04 dB
Peak SAR (extrapolated) = 0.780 W/kg
SAR(1 g) = 0.346 W/kg; SAR(10 g) = 0.151 W/kg
Maximum value of SAR (measured) = 0.603 W/kg



0 dB = 0.603 W/kg

P29 WLAN2.4G_802.11b_Right Side_1cm_Ch11

Communication System: 802.11b; Frequency: 2462 MHz; Duty Cycle: 1:1.01

Medium: HSL2450_1215 Medium parameters used: $f = 2462$ MHz; $\sigma = 1.794$ S/m; $\epsilon_r = 39.429$; $\rho = 1000$ kg/m³

Ambient Temperature : 23.6°C; Liquid Temperature : 22.5°C

DASY5 Configuration:

- Probe: EX3DV4 - SN3873; ConvF(7.88, 7.88, 7.88); Calibrated: 2021/8/25;
- Sensor-Surface: 1.4mm (Mechanical Surface Detection)
- Electronics: DAE4 Sn1389; Calibrated: 2021/10/26
- Phantom: SAM (30deg probe tilt) with CRP v5.0; Type: QD000P40CD; Serial: TP:1781
- Measurement SW: DASY52, Version 52.8 (7); SEMCAD X Version 14.6.10 (7164)

- **Area Scan (41x161x1):** Interpolated grid: dx=1.200 mm, dy=1.200 mm

Maximum value of SAR (interpolated) = 0.270 W/kg

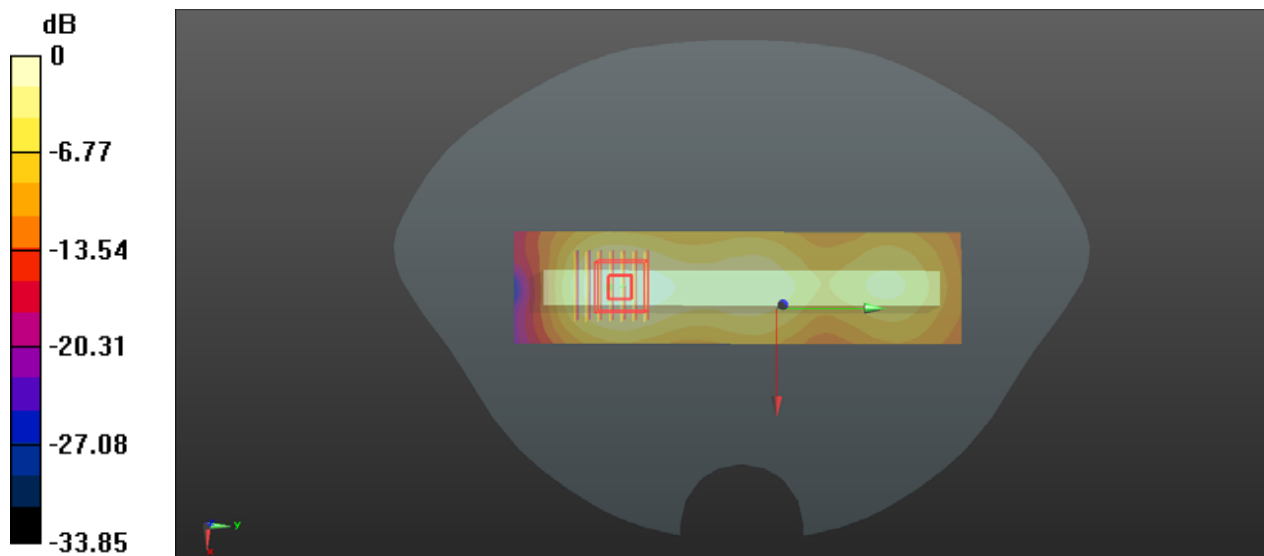
- **Zoom Scan (7x7x7)/Cube 0:** Measurement grid: dx=5mm, dy=5mm, dz=5mm

Reference Value = 7.599 V/m; Power Drift = -0.02 dB

Peak SAR (extrapolated) = 0.321 W/kg

SAR(1 g) = 0.160 W/kg; SAR(10 g) = 0.083 W/kg

Maximum value of SAR (measured) = 0.256 W/kg



0 dB = 0.256 W/kg

P30 WLAN5G_802.11a_Top Side_1cm_Ch48

Communication System: 802.11a; Frequency: 5240 MHz; Duty Cycle: 1:1.05

Medium: HSL5G_1220 Medium parameters used: $f = 5240$ MHz; $\sigma = 4.753$ S/m; $\epsilon_r = 37.008$; $\rho = 1000$ kg/m³

Ambient Temperature : 23.4°C; Liquid Temperature : 22.1°C

DASY5 Configuration:

- Probe: EX3DV4 - SN3873; ConvF(4.8, 4.8, 4.8); Calibrated: 2021/8/25;
- Sensor-Surface: 1.4mm (Mechanical Surface Detection)
- Electronics: DAE4 Sn1389; Calibrated: 2021/10/26
- Phantom: SAM (30deg probe tilt) with CRP v5.0; Type: QD000P40CD; Serial: TP:1781
- Measurement SW: DASY52, Version 52.8 (7); SEMCAD X Version 14.6.10 (7164)

- **Area Scan (51x111x1)**: Interpolated grid: dx=1.000 mm, dy=1.000 mm

Maximum value of SAR (interpolated) = 1.23 W/kg

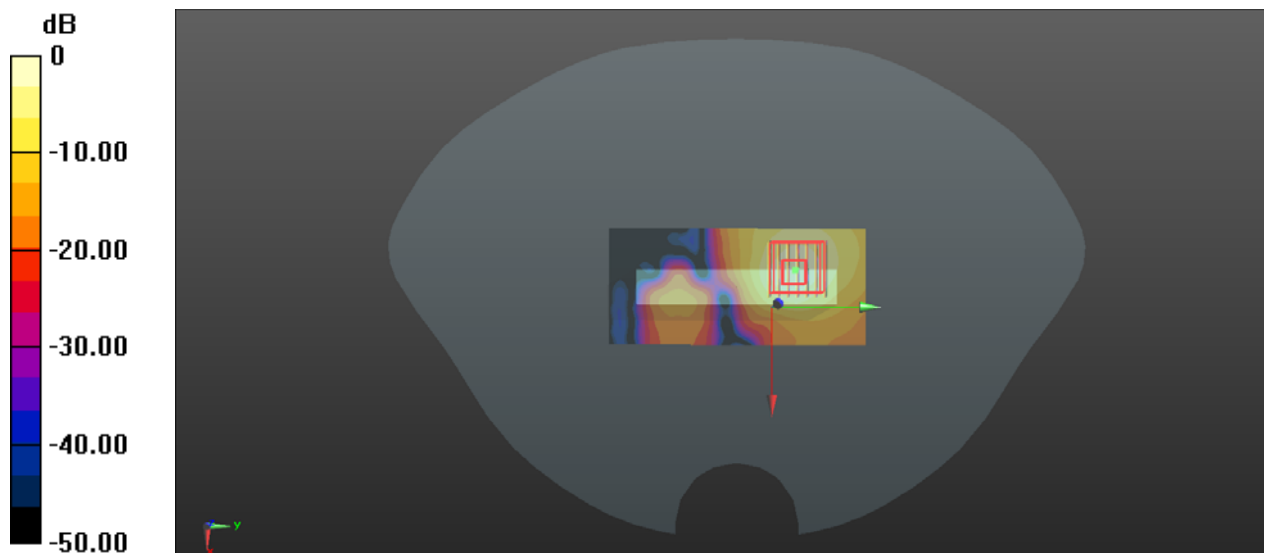
- **Zoom Scan (7x7x12)/Cube 0**: Measurement grid: dx=4mm, dy=4mm, dz=2mm

Reference Value = 0.974 V/m; Power Drift = 0.06 dB

Peak SAR (extrapolated) = 1.87 W/kg

SAR(1 g) = 0.516 W/kg; SAR(10 g) = 0.173 W/kg

Maximum value of SAR (measured) = 1.17 W/kg



0 dB = 1.17 W/kg

P31 WLAN5G_802.11a_Rear Face_1cm_Ch157

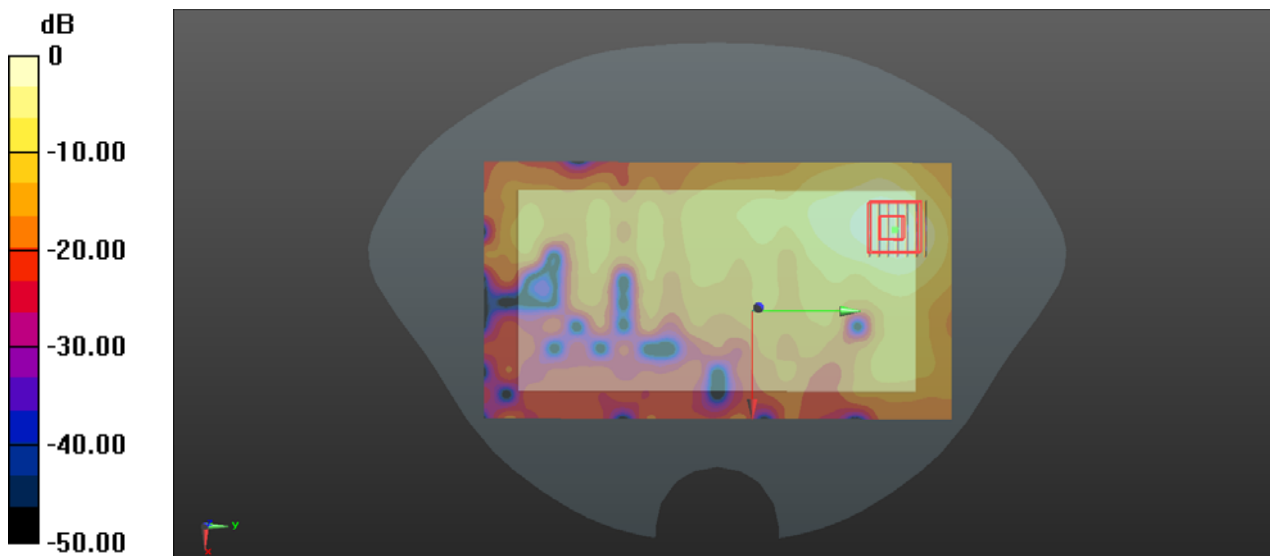
Communication System: 802.11a; Frequency: 5785 MHz; Duty Cycle: 1:1.05
 Medium: HSL5G_1222 Medium parameters used: $f = 5785$ MHz; $\sigma = 5.417$ S/m; $\epsilon_r = 35.84$; $\rho = 1000$ kg/m³
 Ambient Temperature : 23.3°C; Liquid Temperature : 22.4°C

DASY5 Configuration:

- Probe: EX3DV4 - SN3873; ConvF(4.49, 4.49, 4.49); Calibrated: 2021/8/25;
- Sensor-Surface: 1.4mm (Mechanical Surface Detection)
- Electronics: DAE4 Sn1389; Calibrated: 2021/10/26
- Phantom: SAM (30deg probe tilt) with CRP v5.0; Type: QD000P40CD; Serial: TP:1781
- Measurement SW: DASY52, Version 52.8 (7); SEMCAD X Version 14.6.10 (7164)

- **Area Scan (111x201x1):** Interpolated grid: dx=1.000 mm, dy=1.000 mm
 Maximum value of SAR (interpolated) = 1.05 W/kg

- **Zoom Scan (7x7x12)/Cube 0:** Measurement grid: dx=4mm, dy=4mm, dz=2mm
 Reference Value = 1.882 V/m; Power Drift = -0.09 dB
 Peak SAR (extrapolated) = 1.73 W/kg
SAR(1 g) = 0.424 W/kg; SAR(10 g) = 0.152 W/kg
 Maximum value of SAR (measured) = 1.00 W/kg



0 dB = 1.00 W/kg

P32 BT_GFSK_Rear Face_1cm_Ch0

Communication System: BT; Frequency: 2402 MHz; Duty Cycle: 1:1.29

Medium: HSL2450_1215 Medium parameters used: $f = 2402$ MHz; $\sigma = 1.755$ S/m; $\epsilon_r = 39.515$; $\rho = 1000$ kg/m³

Ambient Temperature : 23.6°C; Liquid Temperature : 22.5°C

DASY5 Configuration:

- Probe: EX3DV4 - SN3873; ConvF(7.88, 7.88, 7.88); Calibrated: 2021/8/25;
- Sensor-Surface: 1.4mm (Mechanical Surface Detection)
- Electronics: DAE4 Sn1389; Calibrated: 2021/10/26
- Phantom: SAM (30deg probe tilt) with CRP v5.0; Type: QD000P40CD; Serial: TP:1781
- Measurement SW: DASY52, Version 52.8 (7); SEMCAD X Version 14.6.10 (7164)

- **Area Scan (91x161x1):** Interpolated grid: dx=1.200 mm, dy=1.200 mm

Maximum value of SAR (interpolated) = 0.0346 W/kg

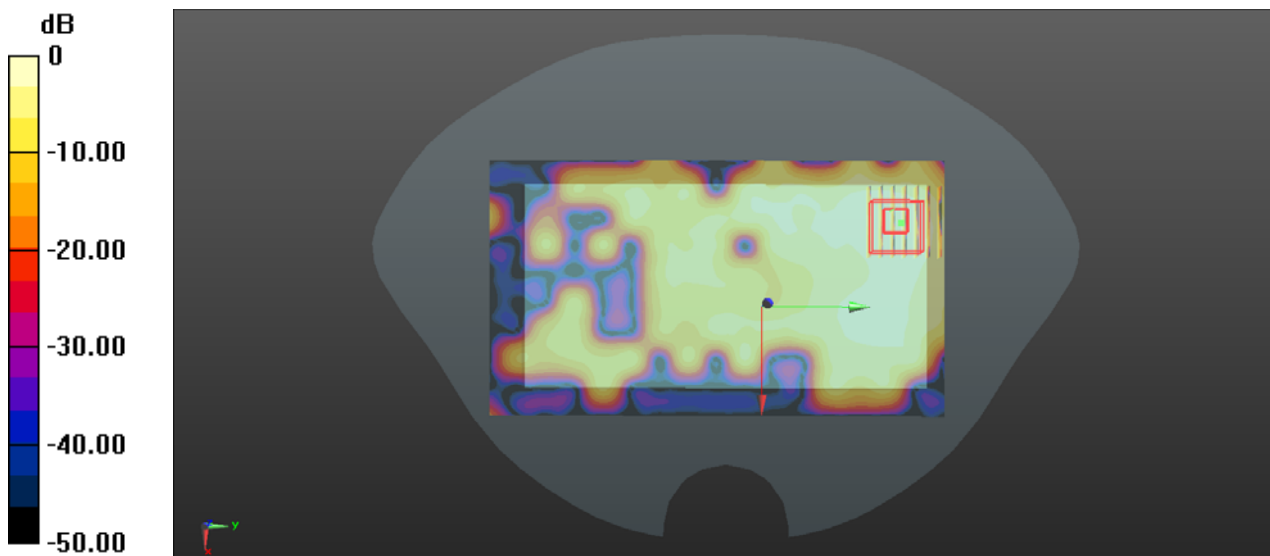
- **Zoom Scan (7x7x7)/Cube 0:** Measurement grid: dx=5mm, dy=5mm, dz=5mm

Reference Value = 1.406 V/m; Power Drift = 0.17 dB

Peak SAR (extrapolated) = 0.0430 W/kg

SAR(1 g) = 0.019 W/kg; SAR(10 g) = 0.00891 W/kg

Maximum value of SAR (measured) = 0.0337 W/kg



0 dB = 0.0337 W/kg

P33 LTE 7_QPSK20M_Rear Face_0cm_Ch21350_1RB_OS0

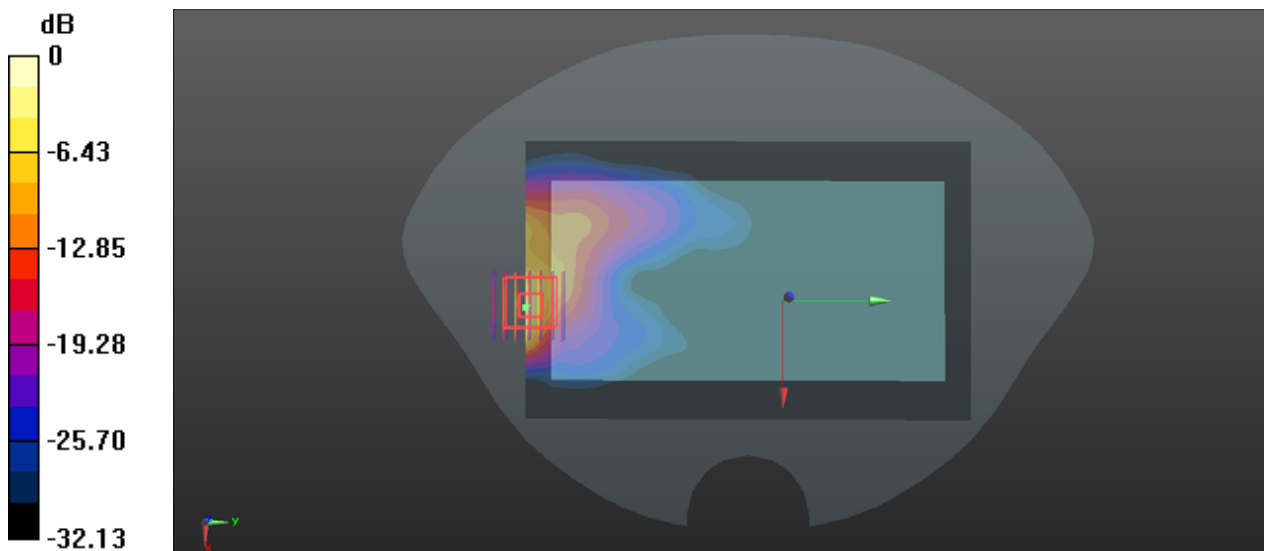
Communication System: LTE; Frequency: 2560 MHz; Duty Cycle: 1:1
Medium: HSL2600_1217 Medium parameters used: $f = 2560$ MHz; $\sigma = 1.87$ S/m; $\epsilon_r = 39.433$; $\rho = 1000$ kg/m³
Ambient Temperature : 23.5°C; Liquid Temperature : 22.6°C

DASY5 Configuration:

- Probe: EX3DV4 - SN3873; ConvF(7.66, 7.66, 7.66); Calibrated: 2021/8/25;
- Sensor-Surface: 1.4mm (Mechanical Surface Detection)
- Electronics: DAE4 Sn1389; Calibrated: 2021/10/26
- Phantom: SAM (30deg probe tilt) with CRP v5.0; Type: QD000P40CD; Serial: TP:1781
- Measurement SW: DASY52, Version 52.8 (7); SEMCAD X Version 14.6.10 (7164)

- **Area Scan (101x161x1)**: Interpolated grid: dx=1.200 mm, dy=1.200 mm
Maximum value of SAR (interpolated) = 11.1 W/kg

- **Zoom Scan (7x7x7)/Cube 0**: Measurement grid: dx=5mm, dy=5mm, dz=5mm
Reference Value = 0.678 V/m; Power Drift = 0.09 dB
Peak SAR (extrapolated) = 18.6 W/kg
SAR(1 g) = 6.1 W/kg; SAR(10 g) = 1.99 W/kg
Maximum value of SAR (measured) = 11.1 W/kg



P34 WLAN5G_802.11a_Top Side_0cm_Ch64

Communication System: 802.11a; Frequency: 5320 MHz; Duty Cycle: 1:1.05

Medium: HSL5G_1220 Medium parameters used: $f = 5320$ MHz; $\sigma = 4.853$ S/m; $\epsilon_r = 36.84$; $\rho = 1000$ kg/m³

Ambient Temperature : 23.4°C; Liquid Temperature : 22.1°C

DASY5 Configuration:

- Probe: EX3DV4 - SN3873; ConvF(4.8, 4.8, 4.8); Calibrated: 2021/8/25;
- Sensor-Surface: 1.4mm (Mechanical Surface Detection)
- Electronics: DAE4 Sn1389; Calibrated: 2021/10/26
- Phantom: SAM (30deg probe tilt) with CRP v5.0; Type: QD000P40CD; Serial: TP:1781
- Measurement SW: DASY52, Version 52.8 (7); SEMCAD X Version 14.6.10 (7164)

- **Area Scan (51x111x1)**: Interpolated grid: dx=1.000 mm, dy=1.000 mm

Maximum value of SAR (interpolated) = 26.2 W/kg

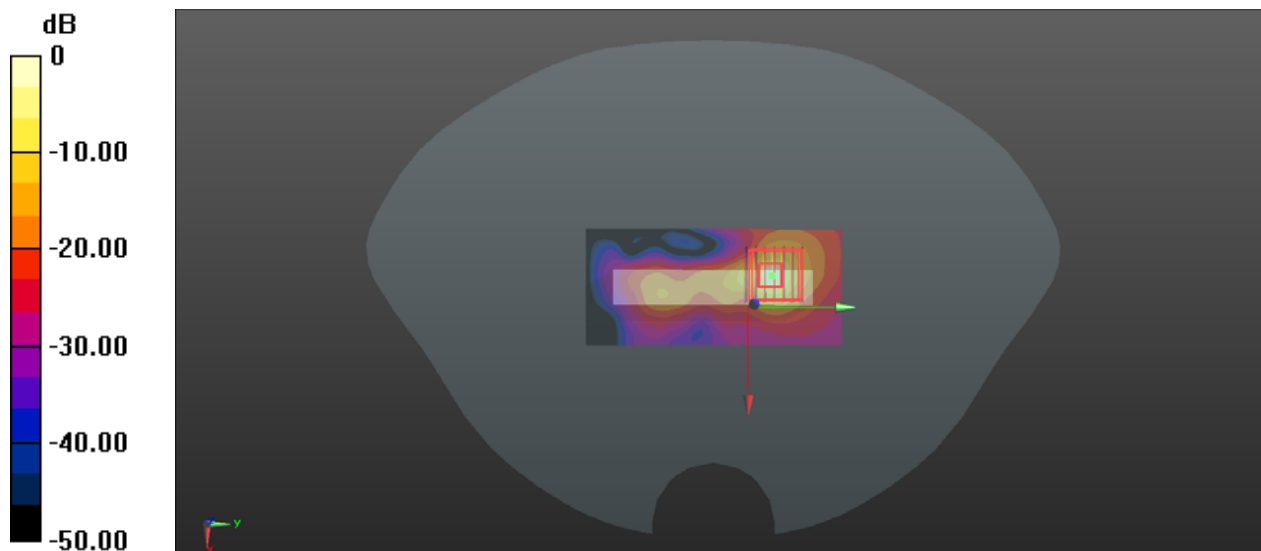
- **Zoom Scan (7x7x12)/Cube 0**: Measurement grid: dx=4mm, dy=4mm, dz=2mm

Reference Value = 6.674 V/m; Power Drift = 0.16 dB

Peak SAR (extrapolated) = 49.4 W/kg

SAR(1 g) = 7.49 W/kg; SAR(10 g) = 1.35 W/kg

Maximum value of SAR (measured) = 26.7 W/kg



0 dB = 26.7 W/kg

P35 WLAN5G_802.11a_Rear Face_0cm_Ch140

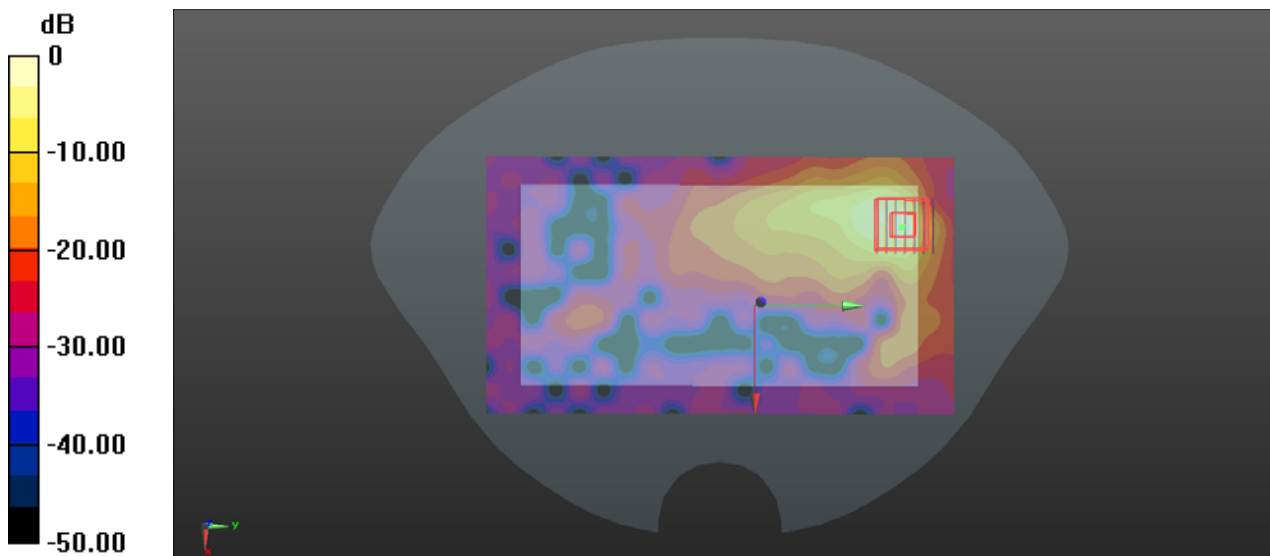
Communication System: 802.11a; Frequency: 5700 MHz; Duty Cycle: 1:1.05
 Medium: HSL5G_1221 Medium parameters used: $f = 5700 \text{ MHz}$; $\sigma = 5.33 \text{ S/m}$; $\epsilon_r = 35.993$; $\rho = 1000 \text{ kg/m}^3$
 Ambient Temperature : 23.7°C ; Liquid Temperature : 22.2°C

DASY5 Configuration:

- Probe: EX3DV4 - SN3873; ConvF(4.5, 4.5, 4.5); Calibrated: 2021/8/25;
- Sensor-Surface: 1.4mm (Mechanical Surface Detection)
- Electronics: DAE4 Sn1389; Calibrated: 2021/10/26
- Phantom: SAM (30deg probe tilt) with CRP v5.0; Type: QD000P40CD; Serial: TP:1781
- Measurement SW: DASY52, Version 52.8 (7); SEMCAD X Version 14.6.10 (7164)

- **Area Scan (111x201x1):** Interpolated grid: $dx=1.000 \text{ mm}$, $dy=1.000 \text{ mm}$
 Maximum value of SAR (interpolated) = 9.17 W/kg

- **Zoom Scan (7x7x12)/Cube 0:** Measurement grid: $dx=4\text{mm}$, $dy=4\text{mm}$, $dz=2\text{mm}$
 Reference Value = 0.891 V/m ; Power Drift = 0.07 dB
 Peak SAR (extrapolated) = 15.6 W/kg
SAR(1 g) = 2.61 W/kg ; SAR(10 g) = 0.690 W/kg
 Maximum value of SAR (measured) = 7.83 W/kg



0 dB = 7.83 W/kg



Appendix C. Calibration Certificate for Probe and Dipole

The SPEAG calibration certificates are shown as follows.



In Collaboration with
s p e a g
CALIBRATION LABORATORY



中国认可
国际互认
校准
CALIBRATION
CNAS L0570

Add: No.52 HuaYuanBei Road, Haidian District, Beijing, 100191, Chi
Tel: +86-10-62304633-2079 Fax: +86-10-62304633-2504
E-mail: cttl@chinattl.com http://www.chinattl.cn

Client **B.V.ADT**

Certificate No: **Z21-60333**

CALIBRATION CERTIFICATE

Object **D835V2 - SN: 4d139**

Calibration Procedure(s) **FF-Z11-003-01**
Calibration Procedures for dipole validation kits

Calibration date: **September 17, 2021**

This calibration Certificate documents the traceability to national standards, which realize the physical units of measurements (SI). The measurements and the uncertainties with confidence probability are given on the following pages and are part of the certificate.

All calibrations have been conducted in the closed laboratory facility: environment temperature (22±3)°C and humidity<70%.

Calibration Equipment used (M&TE critical for calibration)

Primary Standards	ID #	Cal Date (Calibrated by, Certificate No.)	Scheduled Calibration
Power Meter NRP2	106277	23-Sep-20 (CTTL, No.J20X08336)	Sep-21
Power sensor NRP8S	104291	23-Sep-20 (CTTL, No.J20X08336)	Sep-21
Reference Probe EX3DV4	SN 7517	03-Feb-21(CTTL-SPEAG,No.Z21-60001)	Feb-22
DAE4	SN 1556	15-Jan-21(SPEAG,No.DAE4-1556_Jan21)	Jan-22
Secondary Standards	ID #	Cal Date (Calibrated by, Certificate No.)	Scheduled Calibration
Signal Generator E4438C	MY49071430	01-Feb-21 (CTTL, No.J21X00593)	Jan-22
NetworkAnalyzer E5071C	MY46110673	14-Jan-21 (CTTL, No.J21X00232)	Jan-22

	Name	Function	Signature
Calibrated by:	Zhao Jing	SAR Test Engineer	
Reviewed by:	Lin Hao	SAR Test Engineer	
Approved by:	Qi Dianyuan	SAR Project Leader	

Issued: September 22, 2021

This calibration certificate shall not be reproduced except in full without written approval of the laboratory.



Add: No.52 HuaYuanBei Road, Haidian District, Beijing, 100191, China
Tel: +86-10-62304633-2079 Fax: +86-10-62304633-2504
E-mail: cttl@chinattl.com http://www.chinattl.cn

Glossary:

TSL	tissue simulating liquid
ConvF	sensitivity in TSL / NORM _{x,y,z}
N/A	not applicable or not measured

Calibration is Performed According to the Following Standards:

- IEEE Std 1528-2013, "IEEE Recommended Practice for Determining the Peak Spatial-Averaged Specific Absorption Rate (SAR) in the Human Head from Wireless Communications Devices: Measurement Techniques", June 2013
- IEC 62209-1, "Measurement procedure for assessment of specific absorption rate of human exposure to radio frequency fields from hand-held and body-mounted wireless communication devices- Part 1: Device used next to the ear (Frequency range of 300MHz to 6GHz)", July 2016
- IEC 62209-2, "Procedure to measure the Specific Absorption Rate (SAR) For wireless communication devices used in close proximity to the human body (frequency range of 30MHz to 6GHz)", March 2010
- KDB865664, SAR Measurement Requirements for 100 MHz to 6 GHz

Additional Documentation:

- DASY4/5 System Handbook

Methods Applied and Interpretation of Parameters:

- Measurement Conditions:* Further details are available from the Validation Report at the end of the certificate. All figures stated in the certificate are valid at the frequency indicated.
- Antenna Parameters with TSL:* The dipole is mounted with the spacer to position its feed point exactly below the center marking of the flat phantom section, with the arms oriented parallel to the body axis.
- Feed Point Impedance and Return Loss:* These parameters are measured with the dipole positioned under the liquid filled phantom. The impedance stated is transformed from the measurement at the SMA connector to the feed point. The Return Loss ensures low reflected power. No uncertainty required.
- Electrical Delay:* One-way delay between the SMA connector and the antenna feed point. No uncertainty required.
- SAR measured:* SAR measured at the stated antenna input power.
- SAR normalized:* SAR as measured, normalized to an input power of 1 W at the antenna connector.
- SAR for nominal TSL parameters:* The measured TSL parameters are used to calculate the nominal SAR result.

The reported uncertainty of measurement is stated as the standard uncertainty of Measurement multiplied by the coverage factor $k=2$, which for a normal distribution Corresponds to a coverage probability of approximately 95%.



Add: No.52 HuaYuanBei Road, Haidian District, Beijing, 100191, China
 Tel: +86-10-62304633-2079 Fax: +86-10-62304633-2504
 E-mail: cttl@chinattl.com http://www.chinattl.cn

Measurement Conditions

DASY system configuration, as far as not given on page 1.

DASY Version	DASY52	V52.10.4
Extrapolation	Advanced Extrapolation	
Phantom	Triple Flat Phantom 5.1C	
Distance Dipole Center - TSL	15 mm	with Spacer
Zoom Scan Resolution	dx, dy, dz = 5 mm	
Frequency	835 MHz ± 1 MHz	

Head TSL parameters

The following parameters and calculations were applied.

	Temperature	Permittivity	Conductivity
Nominal Head TSL parameters	22.0 °C	41.5	0.90 mho/m
Measured Head TSL parameters	(22.0 ± 0.2) °C	41.2 ± 6 %	0.91 mho/m ± 6 %
Head TSL temperature change during test	<1.0 °C	----	----

SAR result with Head TSL

SAR averaged over 1 cm³ (1 g) of Head TSL	Condition	
SAR measured	250 mW input power	2.39 W/kg
SAR for nominal Head TSL parameters	normalized to 1W	9.47 W/kg ± 18.8 % (k=2)
SAR averaged over 10 cm³ (10 g) of Head TSL	Condition	
SAR measured	250 mW input power	1.55 W/kg
SAR for nominal Head TSL parameters	normalized to 1W	6.15 W/kg ± 18.7 % (k=2)



Add: No.52 HuaYuanBei Road, Haidian District, Beijing, 100191, China
Tel: +86-10-62304633-2079 Fax: +86-10-62304633-2504
E-mail: cttl@chinattl.com http://www.chinattl.cn

Appendix (Additional assessments outside the scope of CNAS L0570)

Antenna Parameters with Head TSL

Impedance, transformed to feed point	51.4Ω- 2.93jΩ
Return Loss	- 29.9dB

General Antenna Parameters and Design

Electrical Delay (one direction)	1.302 ns
----------------------------------	----------

After long term use with 100W radiated power, only a slight warming of the dipole near the feedpoint can be measured.

The dipole is made of standard semirigid coaxial cable. The center conductor of the feeding line is directly connected to the second arm of the dipole. The antenna is therefore short-circuited for DC-signals. On some of the dipoles, small end caps are added to the dipole arms in order to improve matching when loaded according to the position as explained in the "Measurement Conditions" paragraph. The SAR data are not affected by this change. The overall dipole length is still according to the Standard. No excessive force must be applied to the dipole arms, because they might bend or the soldered connections near the feedpoint may be damaged.

Additional EUT Data

Manufactured by	SPEAG
-----------------	-------



Add: No.52 HuaYuanBei Road, Haidian District, Beijing, 100191, China
Tel: +86-10-62304633-2079 Fax: +86-10-62304633-2504
E-mail: cttl@chinattl.com http://www.chinattl.cn

DASY5 Validation Report for Head TSL

Date: 09.17.2021

Test Laboratory: CTTL, Beijing, China

DUT: Dipole 835 MHz; Type: D835V2; Serial: D835V2 - SN: 4d139

Communication System: UID 0, CW; Frequency: 835 MHz; Duty Cycle: 1:1

Medium parameters used: $f = 835$ MHz; $\sigma = 0.91$ S/m; $\epsilon_r = 41.23$; $\rho = 1000$ kg/m³

Phantom section: Right Section

DASY5 Configuration:

- Probe: EX3DV4 - SN7517; ConvF(9.81, 9.81, 9.81) @ 835 MHz; Calibrated: 2021-02-03
- Sensor-Surface: 1.4mm (Mechanical Surface Detection)
- Electronics: DAE4 Sn1556; Calibrated: 2021-01-15
- Phantom: MFP_V5.1C (20deg probe tilt); Type: QD 000 P51 Cx; Serial: 1062
- Measurement SW: DASY52, Version 52.10 (4); SEMCAD X Version 14.6.14 (7483)

Dipole Calibration/Zoom Scan (7x7x7) (7x7x7)/Cube 0: Measurement grid: dx=5mm, dy=5mm, dz=5mm

Reference Value = 58.58 V/m; Power Drift = 0.00 dB

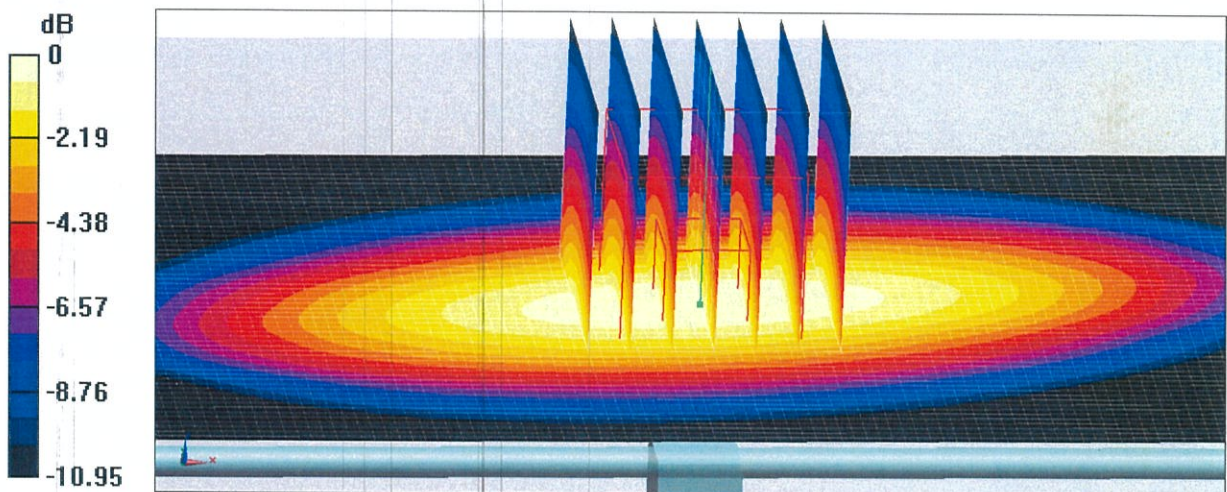
Peak SAR (extrapolated) = 3.75 W/kg

SAR(1 g) = 2.39 W/kg; SAR(10 g) = 1.55 W/kg

Smallest distance from peaks to all points 3 dB below = 17.5 mm

Ratio of SAR at M2 to SAR at M1 = 63.9%

Maximum value of SAR (measured) = 3.27 W/kg

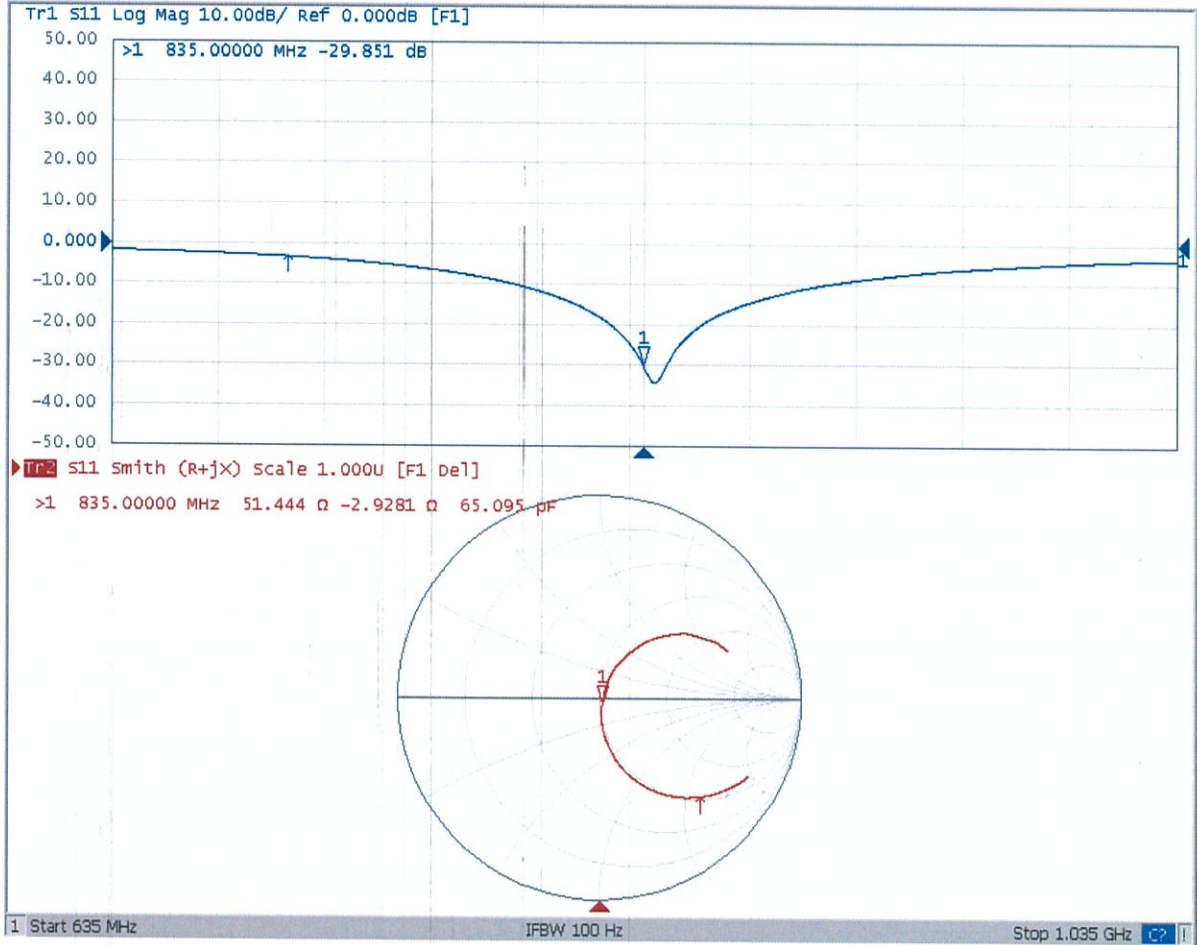


0 dB = 3.27 W/kg = 5.15 dBW/kg



Add: No.52 HuaYuanBei Road, Haidian District, Beijing, 100191, China
Tel: +86-10-62304633-2079 Fax: +86-10-62304633-2504
E-mail: cttl@chinattl.com http://www.chinattl.cn

Impedance Measurement Plot for Head TSL





In Collaboration with
s p e a g
CALIBRATION LABORATORY



中国认可
国际互认
校准
CALIBRATION
CNAS L0570

Add: No.52 HuaYuanBei Road, Haidian District, Beijing, 100191, Chi
Tel: +86-10-62304633-2079 Fax: +86-10-62304633-2504
E-mail: cttl@chinattl.com http://www.chinattl.cn

Client

B.V.ADT

Certificate No:

Z21-60336

CALIBRATION CERTIFICATE

Object

D1900V2 - SN: 5d159

Calibration Procedure(s)

FF-Z11-003-01

Calibration Procedures for dipole validation kits

Calibration date:

September 16, 2021

This calibration Certificate documents the traceability to national standards, which realize the physical units of measurements (SI). The measurements and the uncertainties with confidence probability are given on the following pages and are part of the certificate.

All calibrations have been conducted in the closed laboratory facility: environment temperature (22±3)°C and humidity<70%.

Calibration Equipment used (M&TE critical for calibration)

Primary Standards	ID #	Cal Date (Calibrated by, Certificate No.)	Scheduled Calibration
Power Meter NRP2	106277	23-Sep-20 (CTTL, No.J20X08336)	Sep-21
Power sensor NRP8S	104291	23-Sep-20 (CTTL, No.J20X08336)	Sep-21
Reference Probe EX3DV4	SN 7517	03-Feb-21(CTTL-SPEAG,No.Z21-60001)	Feb-22
DAE4	SN 1556	15-Jan-21(SPEAG,No.DAE4-1556_Jan21)	Jan-22
Secondary Standards	ID #	Cal Date (Calibrated by, Certificate No.)	Scheduled Calibration
Signal Generator E4438C	MY49071430	01-Feb-21 (CTTL, No.J21X00593)	Jan-22
NetworkAnalyzer E5071C	MY46110673	14-Jan-21 (CTTL, No.J21X00232)	Jan-22

	Name	Function	Signature
Calibrated by:	Zhao Jing	SAR Test Engineer	
Reviewed by:	Lin Hao	SAR Test Engineer	
Approved by:	Qi Dianyuan	SAR Project Leader	

Issued: September 21, 2021

This calibration certificate shall not be reproduced except in full without written approval of the laboratory.