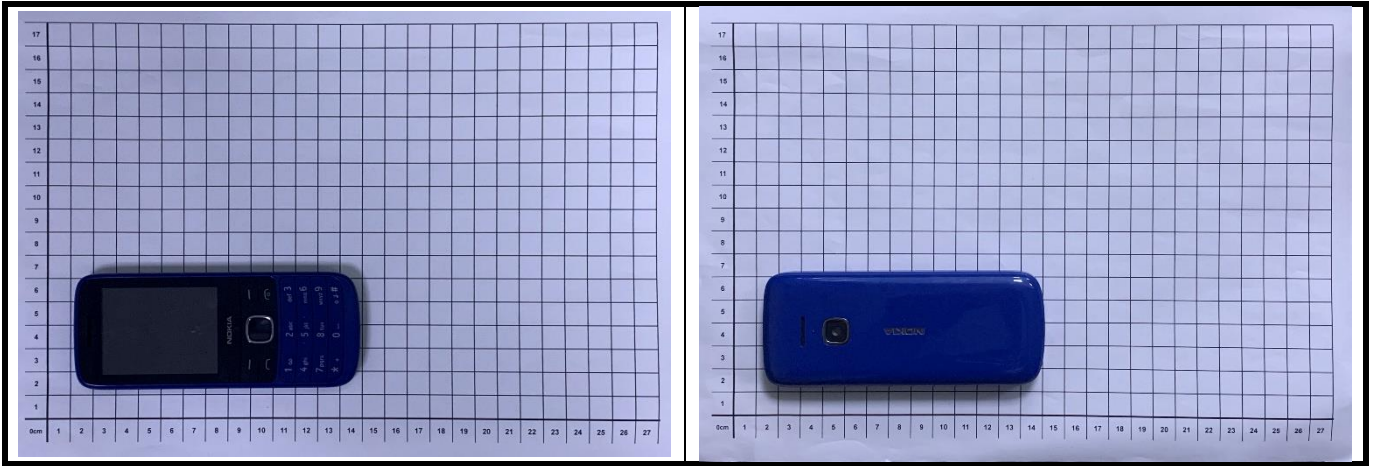
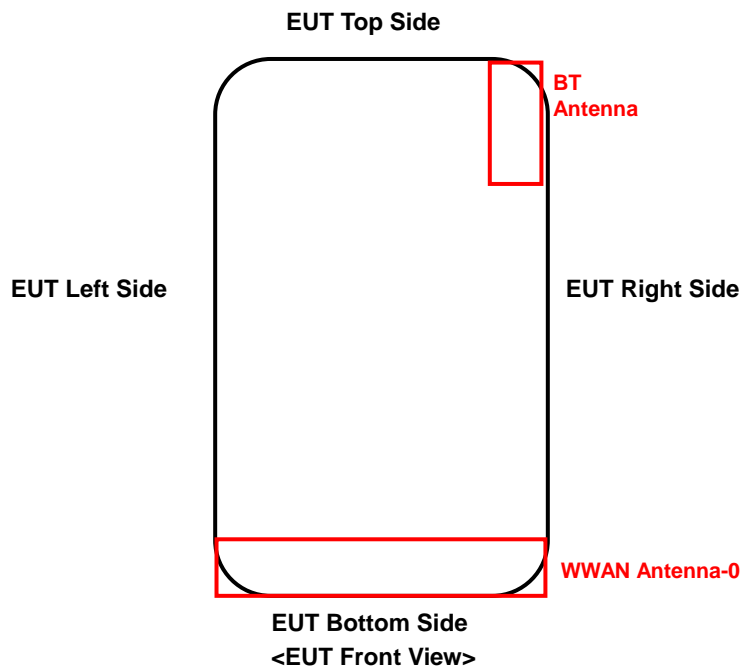


# FCC SAR Test Report

## <Photographs of EUT>



## <Antenna Location>

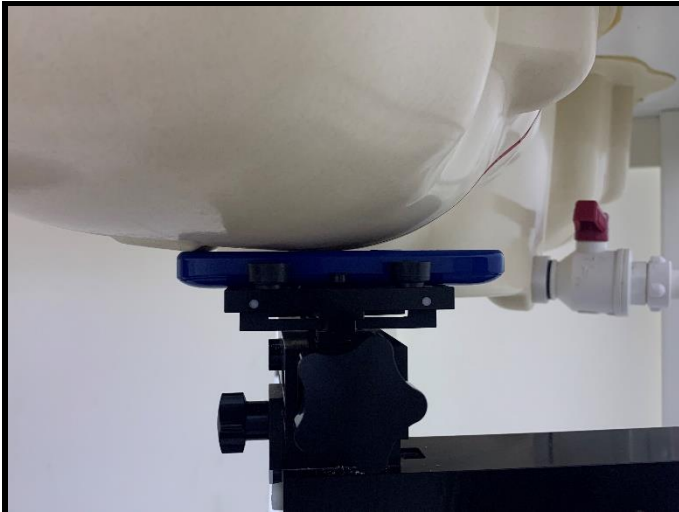


The separation distance for antenna to edge:

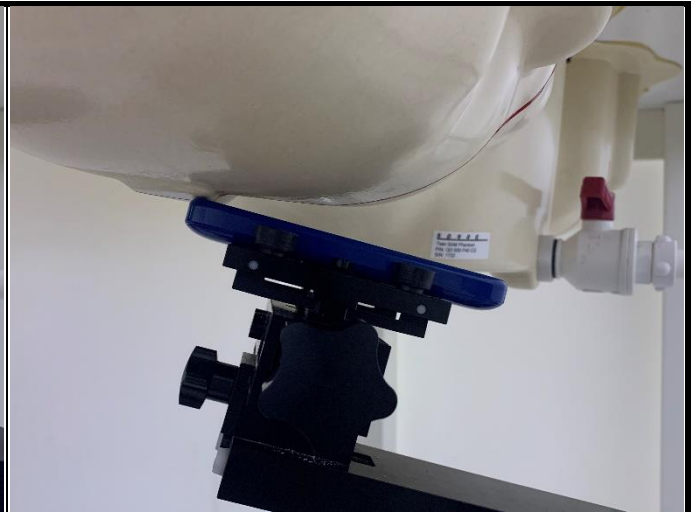
Antenna	Overall diagonal(mm)	Display diagonal(mm)	To Left Side (mm)	To Right Side (mm)	To Top Side (mm)	To Bottom Side (mm)
WWAN	127	64	0	0	109	0
BT			28	0	0	88

# FCC SAR Test Report

## <Photographs of SAR Setup>



**Right Cheek**



**Right Tilted**



**Left Cheek**



**Left Tilted**



**Front Face of EUT with 1.5 cm Gap**



**Rear Face of EUT with 1.5 cm Gap**



Rear Face of EUT with 1.5 cm Gap\_Handset