

Test Laboratory: Sporton International Inc.

Device Under Test Properties

Manufacturer	Dimensions [mm]	IMEI	DUT Type
	171.0 x 79.0 x 10.0		Phone

Exposure Conditions

Phantom Section	Position, Test Distance [mm]	Frequency [MHz]	Conversion Factor
5G	EDGE RIGHT, 2.00	38500.0	1.0

Hardware Setup

Phantom	Medium	Probe, Calibration Date	DAE, Calibration Date
mmWave - xxxx	Air -	EUmmWV4 - SN9461_F1-78GHz, 2019-11-05	DAE4 Sn1424, 2020-01-24

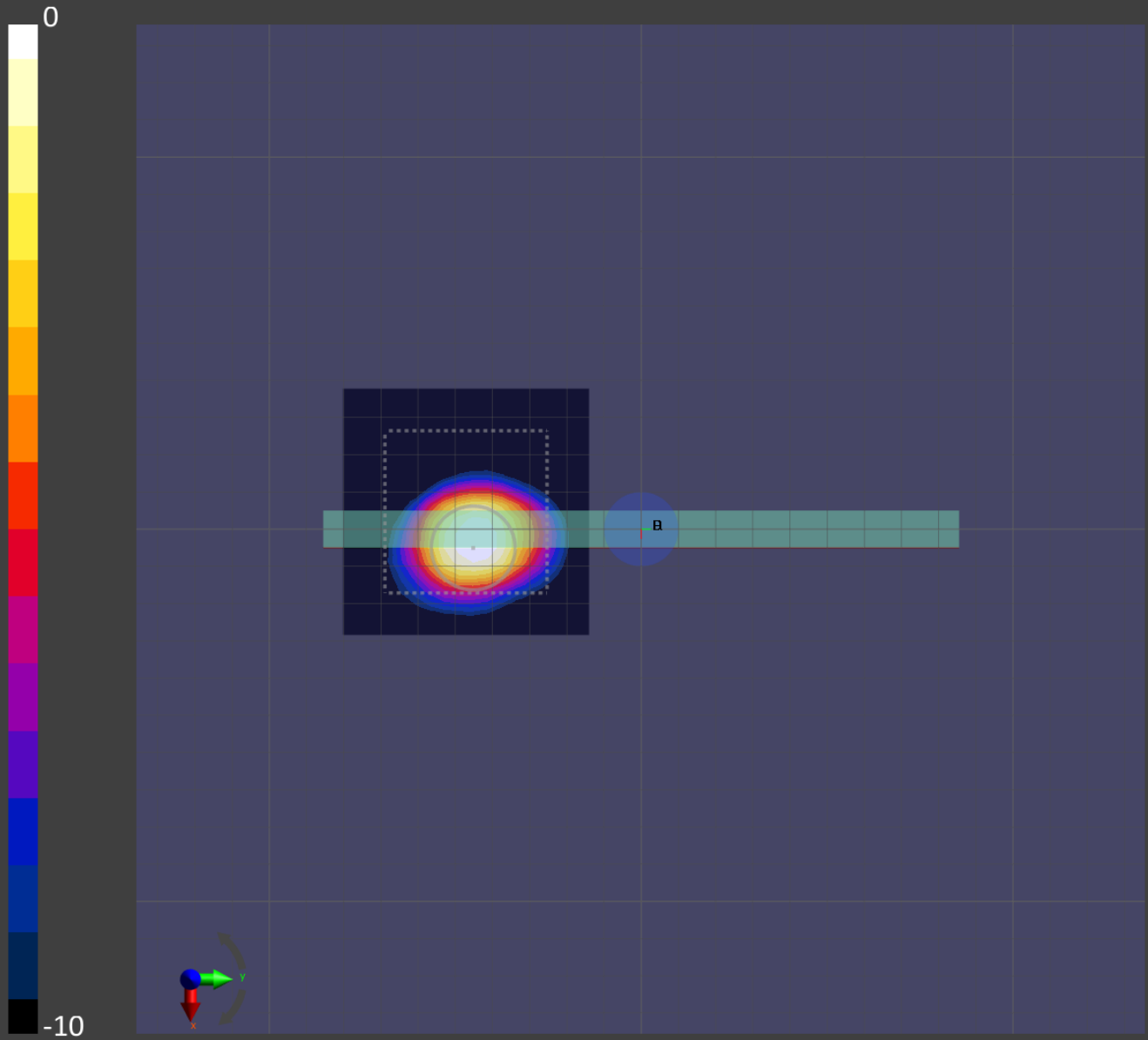
Scans Setup

Grid Extents [mm]	60.0 x 60.0
Grid Steps [lambda]	0.25 x 0.25
Sensor Surface [mm]	2.0

Measurement Results

Date	2020-08-20, 14:20
Avg. Area [cm ²]	4.00
S _{avg inc} [W/m ²]	3.34
S _{avg tot} [W/m ²]	3.73
S _{peak} [W/m ²]	10.9
E _{peak} [V/m]	68.2
H _{peak} [A/m]	0.179
Power Drift [dB]	-0.03

Averaged [4.0 cm²] |Re{S}|(x,y,z,f0) [dB(3.73W/m²)]



Test Laboratory: Sporton International Inc.

Device Under Test Properties

Manufacturer	Dimensions [mm]	IMEI	DUT Type
	171.0 x 79.0 x 10.0		Phone

Exposure Conditions

Phantom Section	Position, Test Distance [mm]	Frequency [MHz]	Conversion Factor
5G	BACK, 2.00	27550.0	1.0

Hardware Setup

Phantom	Medium	Probe, Calibration Date	DAE, Calibration Date
mmWave - xxxx	Air -	EUmmWV4 - SN9461_F1-78GHz, 2019-11-05	DAE4 Sn1424, 2020-01-24

Scans Setup

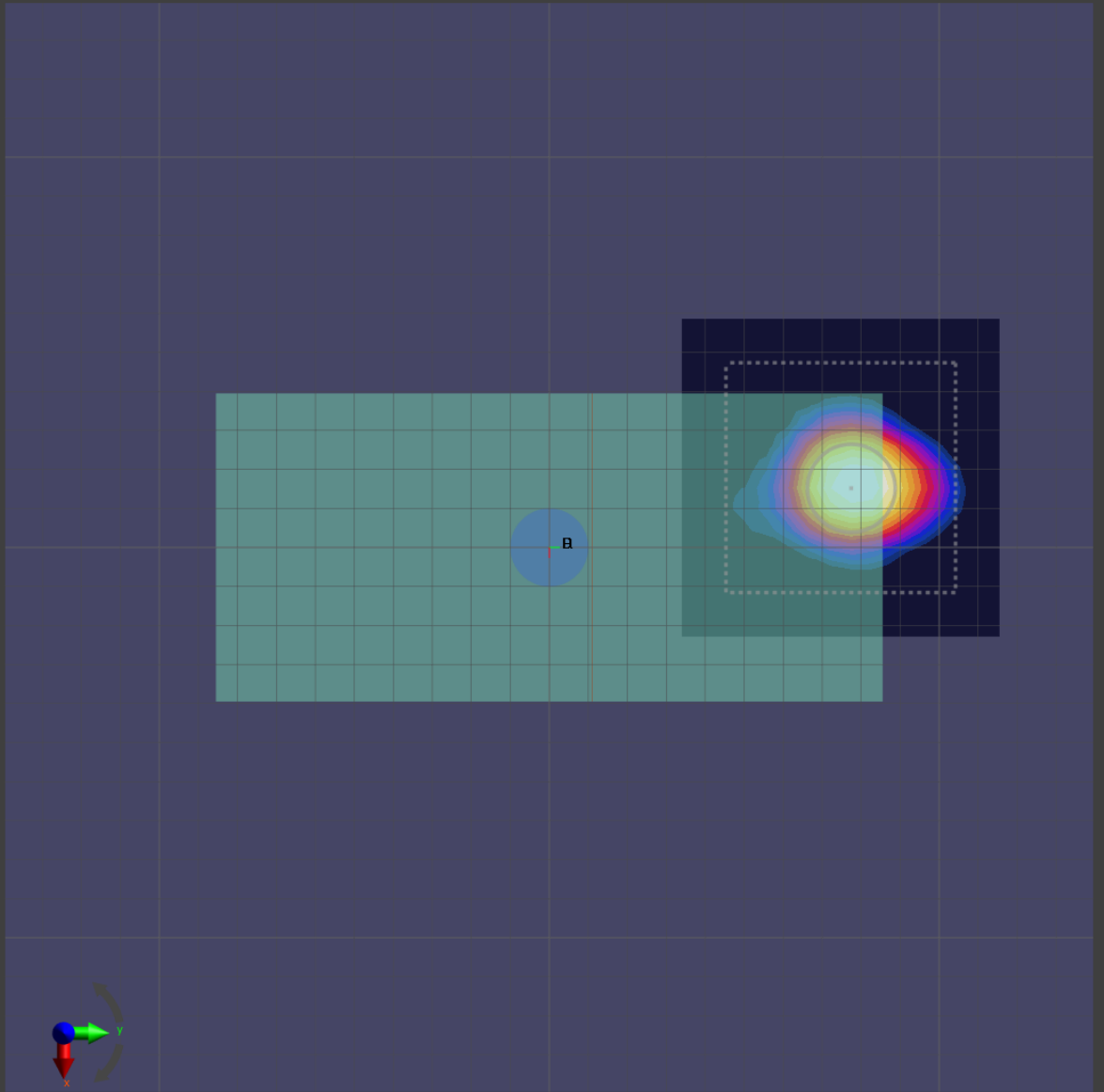
Grid Extents [mm]	60.0 x 60.0
Grid Steps [lambda]	0.25 x 0.25
Sensor Surface [mm]	2.0

Measurement Results

Date	2020-08-20, 19:51
Avg. Area [cm ²]	4.00
S _{avg inc} [W/m ²]	3.49
S _{avg tot} [W/m ²]	4.09
S _{peak} [W/m ²]	11.3
E _{peak} [V/m]	67.3
H _{peak} [A/m]	0.172
Power Drift [dB]	0.01

Averaged [4.0 cm²] |Re{S}|(x,y,z,f0) [dB(4.09W/m²)]

0



-10