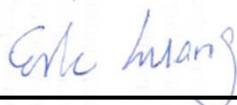


# FCC SAR Test Report

APPLICANT : HMD Global Oy  
EQUIPMENT : Smart Phone  
BRAND NAME : NOKIA  
MODEL NAME : TA-1044  
FCC ID : 2AJOTTA-1044  
STANDARD : FCC 47 CFR Part 2 (2.1093)  
ANSI/IEEE C95.1-1992  
IEEE 1528-2013

We, SPORTON INTERNATIONAL INC., would like to declare that the tested sample has been evaluated in accordance with the procedures and had been in compliance with the applicable technical standards.

The test results in this report apply exclusively to the tested model / sample. Without written approval of SPORTON INTERNATIONAL INC., the test report shall not be reproduced except in full.



Reviewed by: Eric Huang / Manager



Approved by: Jones Tsai / Manager



## **SPORTON INTERNATIONAL INC.**

No.52, Hwa Ya 1st Rd., Hwa Ya Technology Park, Kwei-Shan District, Taoyuan City, Taiwan (R.O.C.)



Table of Contents

1. Statement of Compliance ..... 4
2. Administration Data ..... 5
3. Guidance Applied..... 5
4. Equipment Under Test (EUT) Information..... 6
4.1 General Information ..... 6
4.2 General LTE SAR Test and Reporting Considerations ..... 7
5. RF Exposure Limits..... 9
5.1 Uncontrolled Environment..... 9
5.2 Controlled Environment..... 9
6. Specific Absorption Rate (SAR).....10
6.1 Introduction .....10
6.2 SAR Definition.....10
7. System Description and Setup .....11
7.1 E-Field Probe .....12
7.2 Data Acquisition Electronics (DAE) .....12
7.3 Phantom.....13
7.4 Device Holder.....14
8. Measurement Procedures .....15
8.1 Spatial Peak SAR Evaluation .....15
8.2 Power Reference Measurement.....16
8.3 Area Scan .....16
8.4 Zoom Scan.....17
8.5 Volume Scan Procedures.....17
8.6 Power Drift Monitoring.....17
9. Test Equipment List .....18
10. System Verification .....19
10.1 Tissue Simulating Liquids.....19
10.2 Tissue Verification .....20
10.3 System Performance Check Results.....22
11. RF Exposure Positions .....23
11.1 Ear and handset reference point .....23
11.2 Definition of the cheek position.....24
11.3 Definition of the tilt position.....25
11.4 Body Worn Accessory .....25
11.5 Product Specific .....26
11.6 Wireless Router.....26
12. Conducted RF Output Power (Unit: dBm).....27
13. Bluetooth Exclusions Applied .....55
14. Antenna Location .....56
15. SAR Test Results .....57
15.1 Head SAR .....59
15.2 Hotspot SAR .....62
15.3 Product Specific SAR.....65
15.4 Body Worn Accessory SAR.....66
15.5 Repeated SAR Measurement .....68
16. Simultaneous Transmission Analysis .....69
16.1 Head Exposure Conditions .....70
16.2 Hotspot Exposure Conditions.....71
16.3 Product Specific .....73
16.4 Body-Worn Accessory Exposure Conditions .....73
17. Uncertainty Assessment .....74
18. References.....77
Appendix A. Plots of System Performance Check
Appendix B. Plots of High SAR Measurement
Appendix C. DASY Calibration Certificate
Appendix D. Test Setup Photos



### Revision History

REPORT NO.	VERSION	DESCRIPTION	ISSUED DATE
FA712016	Rev. 01	Initial issue of report	Mar. 24, 2017



**1. Statement of Compliance**

The maximum results of Specific Absorption Rate (SAR) found during testing for HMD Global Oy, Smart Phone, TA-1044, are as follows.

Equipment Class	Frequency Band	Highest SAR Summary				Highest Simultaneous Transmission 1g SAR (W/kg)
		Head (Separation 0mm)	Body-worn (Separation 15mm)	Hotspot (Separation 10mm)	Product Specific (Separation 0mm)	
		1g SAR (W/kg)				
Licensed	GSM850	0.19	0.24	0.36		1.37
	GSM1900	0.18	0.34	1.19		
	WCDMA II	0.29	0.52	0.93		
	WCDMA IV	0.16	0.79	1.16	2.13	
	WCDMA V	0.21	0.26	0.40		
	LTE Band 2	0.23	0.41	0.82		
	LTE Band 4	0.15	0.80	1.09	1.97	
	LTE Band 7	0.17	0.25	0.46		
	LTE Band 12 / 17	0.07	0.20	0.30		
LTE Band 38	0.08	0.11	0.22			
DTS	2.4GHz WLAN	0.80	0.06	0.18		
NII	5GHz WLAN	0.42	0.03	0.08	0.18	

Date of Testing: 2017/2/9 ~ 2017/2/26

**Remark :**

1. LTE band 17 SAR test was covered by Band 12; according to TCB workshop, SAR test for overlapping LTE bands can be reduced if
  - a. The maximum output power, including tolerance, for the smaller band is ≤ the larger band to qualify for the SAR test exclusion.
  - b. The channel bandwidth and other operating parameters for the smaller band are fully supported by the larger band.

This device is in compliance with Specific Absorption Rate (SAR) for general population/uncontrolled exposure limits (1.6 W/kg for Partial-Body, 4.0 W/kg for Product Specific) specified in FCC 47 CFR part 2 (2.1093) and ANSI/IEEE C95.1-1992, and had been tested in accordance with the measurement methods and procedures specified in IEEE 1528-2013 and FCC KDB publications

## 2. Administration Data

Testing Laboratory	
Test Site	SPORTON INTERNATIONAL INC.
Test Site Location	No.52, Hwa Ya 1st Rd., Hwa Ya Technology Park, Kwei-Shan District, Taoyuan City, Taiwan (R.O.C.) TEL: +886-3-327-3456 FAX: +886-3-328-4978

Applicant	
Company Name	HMD Global Oy
Address	Karaportti 2, 02610 Espoo, Finland

Manufacturer	
Company Name	HMD Global Oy
Address	Karaportti 2, 02610 Espoo, Finland

## 3. Guidance Applied

The Specific Absorption Rate (SAR) testing specification, method, and procedure for this device is in accordance with the following standards:

- FCC 47 CFR Part 2 (2.1093)
- ANSI/IEEE C95.1-1992
- IEEE 1528-2013
- FCC KDB 865664 D01 SAR Measurement 100 MHz to 6 GHz v01r04
- FCC KDB 865664 D02 SAR Reporting v01r02
- FCC KDB 447498 D01 General RF Exposure Guidance v06
- FCC KDB 648474 D04 SAR Evaluation Considerations for Wireless Handsets v01r03
- FCC KDB 248227 D01 802.11 Wi-Fi SAR v02r02
- FCC KDB 941225 D01 3G SAR Procedures v03r01
- FCC KDB 941225 D05 SAR for LTE Devices v02r05
- FCC KDB 941225 D06 Hotspot Mode SAR v02r01



**4. Equipment Under Test (EUT) Information**

**4.1 General Information**

Product Feature & Specification	
Equipment Name	Smart Phone
Brand Name	NOKIA
Model Name	TA-1044
FCC ID	2AJOTTA-1044
IMEI Code	SIM 1: 356026080010692 SIM 2: 356026080010700
Wireless Technology and Frequency Range	GSM850: 824.2 MHz ~ 848.8 MHz GSM1900: 1850.2 MHz ~ 1909.8 MHz WCDMA Band II: 1852.4 MHz ~ 1907.6 MHz WCDMA Band IV: 1712.4 MHz ~ 1752.6 MHz WCDMA Band V: 826.4 MHz ~ 846.6 MHz LTE Band 2: 1850.7 MHz ~ 1909.3 MHz LTE Band 4: 1710.7 MHz ~ 1754.3 MHz LTE Band 7: 2502.5 MHz ~ 2567.5 MHz LTE Band 12: 699.7 MHz ~ 715.3 MHz LTE Band 17: 706.5 MHz ~ 713.5 MHz LTE Band 38: 2572.5 MHz ~ 2617.5 MHz WLAN 2.4GHz Band: 2412 MHz ~ 2462 MHz WLAN 5.2GHz Band: 5180 MHz ~ 5240 MHz WLAN 5.3GHz Band: 5260 MHz ~ 5320 MHz WLAN 5.5GHz Band: 5500 MHz ~ 5720 MHz WLAN 5.8GHz Band: 5745 MHz ~ 5825 MHz Bluetooth: 2402 MHz ~ 2480 MHz NFC : 13.56 MHz
Mode	GSM/GPRS/EGPRS/DTM RMC/AMR 12.2Kbps HSDPA HSUPA DC-HSDPA HSPA+ (16QAM uplink) LTE: QPSK, 16QAM WLAN 11b/g/n HT20 WLAN 11a/n HT20/HT40 Bluetooth BR/EDR/LE NFC:ASK
GSM / (E)GPRS Dual Transfer mode	Class A – EUT can support Packet Switched and Circuit Switched Network simultaneously.
EUT Stage	Identical Prototype
<b>Remark:</b>	
<ol style="list-style-type: none"> <li>1. The device has two SIM slots and supports Dual SIM Dual Standby. The WWAN radio transmission will be enabled by either one SIM at a time (Single active).</li> <li>2. This device 2.4GHz / 5.2GHz / 5.8GHz WLAN support Hotspot operation.</li> <li>3. Power reduction for RF exposure consideration :               <ol style="list-style-type: none"> <li>(a) Hotspot mode exposure conditions of WWAN transmitter: Once hotspot feature is activated, and will notify the WWAN modem side to enter the reduced power for WCDMA B2 / B4 and LTE B2 / B4.</li> <li>(b) Head exposure conditions of WLAN transmitter: Once the voice call or VoIP call (either through WWAN bearer, or WLAN bearer) is established, upper layer will determine whether the audio is actively routed through the earpiece receiver. If yes, and will notify the WLAN side to enter the reduced power for 2.4GHz WLAN.</li> </ol> </li> </ol>	



4.2 General LTE SAR Test and Reporting Considerations

Summarized necessary items addressed in KDB 941225 D05 v02r05																																																		
FCC ID	2AJOTTA-1044																																																	
Equipment Name	Smart Phone																																																	
Operating Frequency Range of each LTE transmission band	LTE Band 2: 1850.7 MHz ~ 1909.3 MHz LTE Band 4: 1710.7 MHz ~ 1754.3 MHz LTE Band 7: 2502.5 MHz ~ 2567.5 MHz LTE Band 12: 699.7 MHz ~ 715.3 MHz LTE Band 17: 706.5 MHz ~ 713.5 MHz LTE Band 38: 2572.5 MHz ~ 2617.5 MHz																																																	
Channel Bandwidth	LTE Band 02: 1.4MHz, 3MHz, 5MHz, 10MHz, 15MHz, 20MHz LTE Band 04: 1.4MHz, 3MHz, 5MHz, 10MHz, 15MHz, 20MHz LTE Band 07: 5MHz, 10MHz, 15MHz, 20MHz LTE Band 12: 1.4MHz, 3MHz, 5MHz, 10MHz LTE Band 17: 5MHz, 10MHz LTE Band 38: 5MHz, 10MHz, 15MHz, 20MHz																																																	
uplink modulations used	QPSK, and 16QAM																																																	
LTE Voice / Data requirements	1. VoLTE is supported.																																																	
LTE MPR permanently built-in by design	<p style="text-align: center;"><b>Table 6.2.3-1: Maximum Power Reduction (MPR) for Power Class 3</b></p> <table border="1" style="width: 100%; border-collapse: collapse;"> <thead> <tr> <th rowspan="2">Modulation</th> <th colspan="6">Channel bandwidth / Transmission bandwidth (RB)</th> <th rowspan="2">MPR (dB)</th> </tr> <tr> <th>1.4 MHz</th> <th>3.0 MHz</th> <th>5 MHz</th> <th>10 MHz</th> <th>15 MHz</th> <th>20 MHz</th> </tr> </thead> <tbody> <tr> <td>QPSK</td> <td>&gt;5</td> <td>&gt;4</td> <td>&gt;8</td> <td>&gt;12</td> <td>&gt;16</td> <td>&gt;18</td> <td>≤ 1</td> </tr> <tr> <td>16 QAM</td> <td>≤ 5</td> <td>≤ 4</td> <td>≤ 8</td> <td>≤ 12</td> <td>≤ 16</td> <td>≤ 18</td> <td>≤ 1</td> </tr> <tr> <td>16 QAM</td> <td>&gt;5</td> <td>&gt;4</td> <td>&gt;8</td> <td>&gt;12</td> <td>&gt;16</td> <td>&gt;18</td> <td>≤ 2</td> </tr> </tbody> </table>												Modulation	Channel bandwidth / Transmission bandwidth (RB)						MPR (dB)	1.4 MHz	3.0 MHz	5 MHz	10 MHz	15 MHz	20 MHz	QPSK	>5	>4	>8	>12	>16	>18	≤ 1	16 QAM	≤ 5	≤ 4	≤ 8	≤ 12	≤ 16	≤ 18	≤ 1	16 QAM	>5	>4	>8	>12	>16	>18	≤ 2
Modulation	Channel bandwidth / Transmission bandwidth (RB)						MPR (dB)																																											
	1.4 MHz	3.0 MHz	5 MHz	10 MHz	15 MHz	20 MHz																																												
QPSK	>5	>4	>8	>12	>16	>18	≤ 1																																											
16 QAM	≤ 5	≤ 4	≤ 8	≤ 12	≤ 16	≤ 18	≤ 1																																											
16 QAM	>5	>4	>8	>12	>16	>18	≤ 2																																											
LTE A-MPR	In the base station simulator configuration, Network Setting value is set to NS_01 to disable A-MPR during SAR testing and the LTE SAR tests was transmitting on all TTI frames (Maximum TTI)																																																	
Spectrum plots for RB configuration	A properly configured base station simulator was used for the SAR and power measurement; therefore, spectrum plots for each RB allocation and offset configuration are not included in the SAR report.																																																	
Power reduction applied to satisfy SAR compliance	1. Yes, when operating in hotspot mode that LTE B2 / B4 power reduction applied to satisfy SAR compliance.																																																	
Transmission (H, M, L) channel numbers and frequencies in each LTE band																																																		
LTE Band 2																																																		
	Bandwidth 1.4 MHz		Bandwidth 3 MHz		Bandwidth 5 MHz		Bandwidth 10 MHz		Bandwidth 15 MHz		Bandwidth 20 MHz																																							
	Ch. #	Freq. (MHz)	Ch. #	Freq. (MHz)	Ch. #	Freq. (MHz)	Ch. #	Freq. (MHz)	Ch. #	Freq. (MHz)	Ch. #	Freq. (MHz)																																						
L	18607	1850.7	18615	1851.5	18625	1852.5	18650	1855	18675	1857.5	18700	1860																																						
M	18900	1880	18900	1880	18900	1880	18900	1880	18900	1880	18900	1880																																						
H	19193	1909.3	19185	1908.5	19175	1907.5	19150	1905	19125	1902.5	19100	1900																																						
LTE Band 4																																																		
	Bandwidth 1.4 MHz		Bandwidth 3 MHz		Bandwidth 5 MHz		Bandwidth 10 MHz		Bandwidth 15 MHz		Bandwidth 20 MHz																																							
	Ch. #	Freq. (MHz)	Ch. #	Freq. (MHz)	Ch. #	Freq. (MHz)	Ch. #	Freq. (MHz)	Ch. #	Freq. (MHz)	Ch. #	Freq. (MHz)																																						
L	19957	1710.7	19965	1711.5	19975	1712.5	20000	1715	20025	1717.5	20050	1720																																						
M	20175	1732.5	20175	1732.5	20175	1732.5	20175	1732.5	20175	1732.5	20175	1732.5																																						
H	20393	1754.3	20385	1753.5	20375	1752.5	20350	1750	20325	1747.5	20300	1745																																						
LTE Band 7																																																		
	Bandwidth 5 MHz		Bandwidth 10 MHz		Bandwidth 15 MHz		Bandwidth 20 MHz																																											
	Ch. #	Freq. (MHz)	Ch. #	Freq. (MHz)	Ch. #	Freq. (MHz)	Ch. #	Freq. (MHz)																																										
L	20775	2502.5	20800	2505	20825	2507.5	20850	2510																																										
M	21100	2535	21100	2535	21100	2535	21100	2535																																										
H	21425	2567.5	21400	2565	21375	2562.5	21350	2560																																										



LTE Band 12								
	Bandwidth 1.4 MHz		Bandwidth 3 MHz		Bandwidth 5 MHz		Bandwidth 10 MHz	
	Ch. #	Freq. (MHz)	Ch. #	Freq. (MHz)	Ch. #	Freq. (MHz)	Ch. #	Freq. (MHz)
L	23017	699.7	23025	700.5	23035	701.5	23060	704
M	23095	707.5	23095	707.5	23095	707.5	23095	707.5
H	23173	715.3	23165	714.5	23155	713.5	23130	711
LTE Band 17								
	Bandwidth 5 MHz				Bandwidth 10 MHz			
	Channel #		Freq.(MHz)		Channel #		Freq. (MHz)	
L	23755		706.5		23780		709	
M	23790		710		23790		710	
H	23825		713.5		23800		711	
LTE Band 38								
	Bandwidth 5 MHz		Bandwidth 10 MHz		Bandwidth 15 MHz		Bandwidth 20 MHz	
	Ch. #	Freq. (MHz)	Ch. #	Freq. (MHz)	Ch. #	Freq. (MHz)	Ch. #	Freq. (MHz)
L	37775	2572.5	37800	2575	37825	2577.5	37850	2580
M	38000	2595	38000	2595	38000	2595	38000	2595
H	38225	2617.5	38200	2615	38175	2612.5	38150	2610





### 5. RF Exposure Limits

#### 5.1 Uncontrolled Environment

Uncontrolled Environments are defined as locations where there is the exposure of individuals who have no knowledge or control of their exposure. The general population/uncontrolled exposure limits are applicable to situations in which the general public may be exposed or in which persons who are exposed as a consequence of their employment may not be made fully aware of the potential for exposure or cannot exercise control over their exposure. Members of the general public would come under this category when exposure is not employment-related; for example, in the case of a wireless transmitter that exposes persons in its vicinity.

#### 5.2 Controlled Environment

Controlled Environments are defined as locations where there is exposure that may be incurred by persons who are aware of the potential for exposure, (i.e. as a result of employment or occupation). In general, occupational/controlled exposure limits are applicable to situations in which persons are exposed as a consequence of their employment, who have been made fully aware of the potential for exposure and can exercise control over their exposure. The exposure category is also applicable when the exposure is of a transient nature due to incidental passage through a location where the exposure levels may be higher than the general population/uncontrolled limits, but the exposed person is fully aware of the potential for exposure and can exercise control over his or her exposure by leaving the area or by some other appropriate means.

**Limits for Occupational/Controlled Exposure (W/kg)**

Whole-Body	Partial-Body	Hands, Wrists, Feet and Ankles
0.4	8.0	20.0

**Limits for General Population/Uncontrolled Exposure (W/kg)**

Whole-Body	Partial-Body	Hands, Wrists, Feet and Ankles
0.08	1.6	4.0

1. Whole-Body SAR is averaged over the entire body, partial-body SAR is averaged over any 1gram of tissue defined as a tissue volume in the shape of a cube. SAR for hands, wrists, feet and ankles is averaged over any 10 grams of tissue defined as a tissue volume in the shape of a cube.

## **6. Specific Absorption Rate (SAR)**

### **6.1 Introduction**

SAR is related to the rate at which energy is absorbed per unit mass in an object exposed to a radio field. The SAR distribution in a biological body is complicated and is usually carried out by experimental techniques or numerical modeling. The standard recommends limits for two tiers of groups, occupational/controlled and general population/uncontrolled, based on a person's awareness and ability to exercise control over his or her exposure. In general, occupational/controlled exposure limits are higher than the limits for general population/uncontrolled.

### **6.2 SAR Definition**

The SAR definition is the time derivative (rate) of the incremental energy (dW) absorbed by (dissipated in) an incremental mass (dm) contained in a volume element (dv) of a given density ( $\rho$ ). The equation description is as below:

$$SAR = \frac{d}{dt} \left( \frac{dW}{dm} \right) = \frac{d}{dt} \left( \frac{dW}{\rho dv} \right)$$

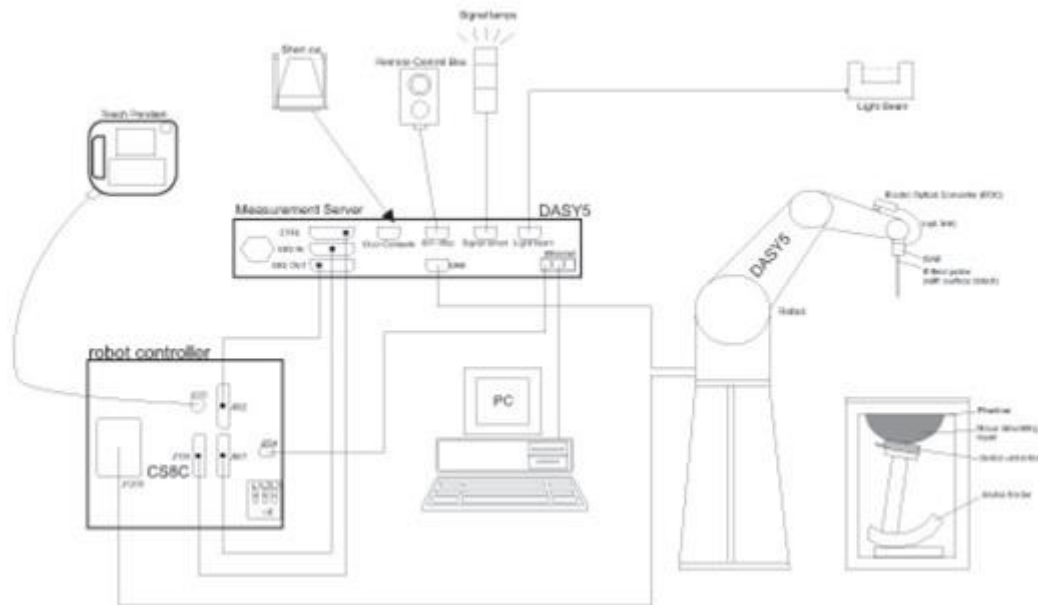
SAR is expressed in units of Watts per kilogram (W/kg)

$$SAR = \frac{\sigma |E|^2}{\rho}$$

Where:  $\sigma$  is the conductivity of the tissue,  $\rho$  is the mass density of the tissue and E is the RMS electrical field strength.

## 7. System Description and Setup

The DASY system used for performing compliance tests consists of the following items:




- A standard high precision 6-axis robot with controller, teach pendant and software. An arm extension for accommodating the data acquisition electronics (DAE).
- An isotropic Field probe optimized and calibrated for the targeted measurement.
- A data acquisition electronics (DAE) which performs the signal amplification, signal multiplexing, AD-conversion, offset measurements, mechanical surface detection, collision detection, etc. The unit is battery powered with standard or rechargeable batteries. The signal is optically transmitted to the EOC.
- The Electro-optical converter (EOC) performs the conversion from optical to electrical signals for the digital communication to the DAE. To use optical surface detection, a special version of the EOC is required. The EOC signal is transmitted to the measurement server.
- The function of the measurement server is to perform the time critical tasks such as signal filtering, control of the robot operation and fast movement interrupts.
- The Light Beam used is for probe alignment. This improves the (absolute) accuracy of the probe positioning.
- A computer running WinXP or Win7 and the DASY5 software.
- Remote control and teach pendant as well as additional circuitry for robot safety such as warning lamps, etc.
- The phantom, the device holder and other accessories according to the targeted measurement.


**7.1 E-Field Probe**

The SAR measurement is conducted with the dosimetric probe (manufactured by SPEAG).The probe is specially designed and calibrated for use in liquid with high permittivity. The dosimetric probe has special calibration in liquid at different frequency. This probe has a built in optical surface detection system to prevent from collision with phantom.

**<ES3DV3 Probe>**

<b>Construction</b>	Symmetric design with triangular core Interleaved sensors Built-in shielding against static charges PEEK enclosure material (resistant to organic solvents, e.g., DGBE)	
<b>Frequency</b>	10 MHz – 4 GHz; Linearity: $\pm 0.2$ dB (30 MHz – 4 GHz)	
<b>Directivity</b>	$\pm 0.2$ dB in TSL (rotation around probe axis) $\pm 0.3$ dB in TSL (rotation normal to probe axis)	
<b>Dynamic Range</b>	5 $\mu$ W/g – >100 mW/g; Linearity: $\pm 0.2$ dB	
<b>Dimensions</b>	Overall length: 337 mm (tip: 20 mm) Tip diameter: 3.9 mm (body: 12 mm) Distance from probe tip to dipole centers: 3.0 mm	

**<EX3DV4 Probe>**

<b>Construction</b>	Symmetric design with triangular core Built-in shielding against static charges PEEK enclosure material (resistant to organic solvents, e.g., DGBE)	
<b>Frequency</b>	10 MHz – >6 GHz Linearity: $\pm 0.2$ dB (30 MHz – 6 GHz)	
<b>Directivity</b>	$\pm 0.3$ dB in TSL (rotation around probe axis) $\pm 0.5$ dB in TSL (rotation normal to probe axis)	
<b>Dynamic Range</b>	10 $\mu$ W/g – >100 mW/g Linearity: $\pm 0.2$ dB (noise: typically <1 $\mu$ W/g)	
<b>Dimensions</b>	Overall length: 337 mm (tip: 20 mm) Tip diameter: 2.5 mm (body: 12 mm) Typical distance from probe tip to dipole centers: 1 mm	

**7.2 Data Acquisition Electronics (DAE)**

The data acquisition electronics (DAE) consists of a highly sensitive electrometer-grade preamplifier with auto-zeroing, a channel and gain-switching multiplexer, a fast 16 bit AD-converter and a command decoder and control logic unit. Transmission to the measurement server is accomplished through an optical downlink for data and status information as well as an optical uplink for commands and the clock.


The input impedance of the DAE is 200 MOhm; the inputs are symmetrical and floating. Common mode rejection is above 80 dB.



**Fig 5.1 Photo of DAE**

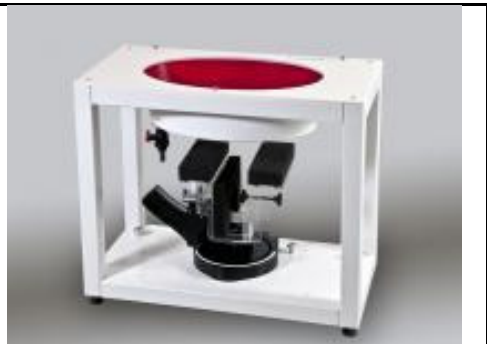
**7.3 Phantom**

**<SAM Twin Phantom>**

<b>Shell Thickness</b>	2 ± 0.2 mm; Center ear point: 6 ± 0.2 mm	
<b>Filling Volume</b>	Approx. 25 liters	
<b>Dimensions</b>	Length: 1000 mm; Width: 500 mm; Height: adjustable feet	
<b>Measurement Areas</b>	Left Hand, Right Hand, Flat Phantom	

The bottom plate contains three pair of bolts for locking the device holder. The device holder positions are adjusted to the standard measurement positions in the three sections. A white cover is provided to tap the phantom during off-periods to prevent water evaporation and changes in the liquid parameters. On the phantom top, three reference markers are provided to identify the phantom position with respect to the robot.

**<ELI Phantom>**

<b>Shell Thickness</b>	2 ± 0.2 mm (sagging: <1%)	
<b>Filling Volume</b>	Approx. 30 liters	
<b>Dimensions</b>	Major ellipse axis: 600 mm Minor axis: 400 mm	

The ELI phantom is intended for compliance testing of handheld and body-mounted wireless devices in the frequency range of 30 MHz to 6 GHz. ELI4 is fully compatible with standard and all known tissue simulating liquids.

## **7.4 Device Holder**

### **<Mounting Device for Hand-Held Transmitter>**

In combination with the Twin SAM V5.0/V5.0c or ELI phantoms, the Mounting Device for Hand-Held Transmitters enables rotation of the mounted transmitter device to specified spherical coordinates. At the heads, the rotation axis is at the ear opening. Transmitter devices can be easily and accurately positioned according to IEC 62209-1, IEEE 1528, FCC, or other specifications. The device holder can be locked for positioning at different phantom sections (left head, right head, flat). And upgrade kit to Mounting Device to enable easy mounting of wider devices like big smart-phones, e-books, small tablets, etc. It holds devices with width up to 140 mm.



Mounting Device for Hand-Held Transmitters



Mounting Device Adaptor for Wide-Phones

### **<Mounting Device for Laptops and other Body-Worn Transmitters>**

The extension is lightweight and made of POM, acrylic glass and foam. It fits easily on the upper part of the mounting device in place of the phone positioned. The extension is fully compatible with the SAM Twin and ELI phantoms.



Mounting Device for Laptops

## **8. Measurement Procedures**

The measurement procedures are as follows:

### <Conducted power measurement>

- (a) For WWAN power measurement, use base station simulator to configure EUT WWAN transmission in conducted connection with RF cable, at maximum power in each supported wireless interface and frequency band.
- (b) Read the WWAN RF power level from the base station simulator.
- (c) For WLAN/BT power measurement, use engineering software to configure EUT WLAN/BT continuously transmission, at maximum RF power in each supported wireless interface and frequency band
- (d) Connect EUT RF port through RF cable to the power meter, and measure WLAN/BT output power

### <SAR measurement>

- (a) Use base station simulator to configure EUT WWAN transmission in radiated connection, and engineering software to configure EUT WLAN/BT continuously transmission, at maximum RF power, in the highest power channel.
- (b) Place the EUT in the positions as Appendix D demonstrates.
- (c) Set scan area, grid size and other setting on the DASY software.
- (d) Measure SAR results for the highest power channel on each testing position.
- (e) Find out the largest SAR result on these testing positions of each band
- (f) Measure SAR results for other channels in worst SAR testing position if the reported SAR of highest power channel is larger than 0.8 W/kg

According to the test standard, the recommended procedure for assessing the peak spatial-average SAR value consists of the following steps:

- (a) Power reference measurement
- (b) Area scan
- (c) Zoom scan
- (d) Power drift measurement

### **8.1 Spatial Peak SAR Evaluation**

The procedure for spatial peak SAR evaluation has been implemented according to the test standard. It can be conducted for 1g and 10g, as well as for user-specific masses. The DASY software includes all numerical procedures necessary to evaluate the spatial peak SAR value.

The base for the evaluation is a "cube" measurement. The measured volume must include the 1g and 10g cubes with the highest averaged SAR values. For that purpose, the center of the measured volume is aligned to the interpolated peak SAR value of a previously performed area scan.

The entire evaluation of the spatial peak values is performed within the post-processing engine (SEMCAD). The system always gives the maximum values for the 1g and 10g cubes. The algorithm to find the cube with highest averaged SAR is divided into the following stages:

- (a) Extraction of the measured data (grid and values) from the Zoom Scan
- (b) Calculation of the SAR value at every measurement point based on all stored data (A/D values and measurement parameters)
- (c) Generation of a high-resolution mesh within the measured volume
- (d) Interpolation of all measured values from the measurement grid to the high-resolution grid
- (e) Extrapolation of the entire 3-D field distribution to the phantom surface over the distance from sensor to surface
- (f) Calculation of the averaged SAR within masses of 1g and 10g

**8.2 Power Reference Measurement**

The Power Reference Measurement and Power Drift Measurements are for monitoring the power drift of the device under test in the batch process. The minimum distance of probe sensors to surface determines the closest measurement point to phantom surface. This distance cannot be smaller than the distance of sensor calibration points to probe tip as defined in the probe properties.

**8.3 Area Scan**

The area scan is used as a fast scan in two dimensions to find the area of high field values, before doing a fine measurement around the hot spot. The sophisticated interpolation routines implemented in DASY software can find the maximum found in the scanned area, within a range of the global maximum. The range (in dB0 is specified in the standards for compliance testing. For example, a 2 dB range is required in IEEE standard 1528 and IEC 62209 standards, whereby 3 dB is a requirement when compliance is assessed in accordance with the ARIB standard (Japan), if only one zoom scan follows the area scan, then only the absolute maximum will be taken as reference. For cases where multiple maximums are detected, the number of zoom scans has to be increased accordingly.

Area scan parameters extracted from FCC KDB 865664 D01v01r04 SAR measurement 100 MHz to 6 GHz.

	≤ 3 GHz	> 3 GHz
Maximum distance from closest measurement point (geometric center of probe sensors) to phantom surface	5 ± 1 mm	$\frac{1}{2} \cdot \delta \cdot \ln(2) \pm 0.5$ mm
Maximum probe angle from probe axis to phantom surface normal at the measurement location	30° ± 1°	20° ± 1°
Maximum area scan spatial resolution: $\Delta x_{Area}$ , $\Delta y_{Area}$	≤ 2 GHz: ≤ 15 mm 2 – 3 GHz: ≤ 12 mm	3 – 4 GHz: ≤ 12 mm 4 – 6 GHz: ≤ 10 mm
	When the x or y dimension of the test device, in the measurement plane orientation, is smaller than the above, the measurement resolution must be ≤ the corresponding x or y dimension of the test device with at least one measurement point on the test device.	



**8.4 Zoom Scan**

Zoom scans are used assess the peak spatial SAR values within a cubic averaging volume containing 1 gram and 10 gram of simulated tissue. The zoom scan measures points (refer to table below) within a cube shoes base faces are centered on the maxima found in a preceding area scan job within the same procedure. When the measurement is done, the zoom scan evaluates the averaged SAR for 1 gram and 10 gram and displays these values next to the job's label.

Zoom scan parameters extracted from FCC KDB 865664 D01v01r04 SAR measurement 100 MHz to 6 GHz.

		≤ 3 GHz	> 3 GHz	
Maximum zoom scan spatial resolution: $\Delta x_{Zoom}, \Delta y_{Zoom}$		$\leq 2$ GHz: $\leq 8$ mm 2 – 3 GHz: $\leq 5$ mm*	3 – 4 GHz: $\leq 5$ mm* 4 – 6 GHz: $\leq 4$ mm*	
Maximum zoom scan spatial resolution, normal to phantom surface	uniform grid: $\Delta z_{Zoom}(n)$	$\leq 5$ mm	3 – 4 GHz: $\leq 4$ mm 4 – 5 GHz: $\leq 3$ mm 5 – 6 GHz: $\leq 2$ mm	
	graded grid	$\Delta z_{Zoom}(1)$ : between 1 <sup>st</sup> two points closest to phantom surface	$\leq 4$ mm	3 – 4 GHz: $\leq 3$ mm 4 – 5 GHz: $\leq 2.5$ mm 5 – 6 GHz: $\leq 2$ mm
		$\Delta z_{Zoom}(n>1)$ : between subsequent points	$\leq 1.5 \cdot \Delta z_{Zoom}(n-1)$	
Minimum zoom scan volume	x, y, z	$\geq 30$ mm	3 – 4 GHz: $\geq 28$ mm 4 – 5 GHz: $\geq 25$ mm 5 – 6 GHz: $\geq 22$ mm	
Note: $\delta$ is the penetration depth of a plane-wave at normal incidence to the tissue medium; see draft standard IEEE P1528-2011 for details. * When zoom scan is required and the <i>reported</i> SAR from the <i>area scan based 1-g SAR estimation</i> procedures of KDB 447498 is $\leq 1.4$ W/kg, $\leq 8$ mm, $\leq 7$ mm and $\leq 5$ mm zoom scan resolution may be applied, respectively, for 2 GHz to 3 GHz, 3 GHz to 4 GHz and 4 GHz to 6 GHz.				

**8.5 Volume Scan Procedures**

The volume scan is used for assess overlapping SAR distributions for antennas transmitting in different frequency bands. It is equivalent to an oversized zoom scan used in standalone measurements. The measurement volume will be used to enclose all the simultaneous transmitting antennas. For antennas transmitting simultaneously in different frequency bands, the volume scan is measured separately in each frequency band. In order to sum correctly to compute the 1g aggregate SAR, the EUT remain in the same test position for all measurements and all volume scan use the same spatial resolution and grid spacing. When all volume scan were completed, the software, SEMCAD postprocessor can combine and subsequently superpose these measurement data to calculating the multiband SAR.

**8.6 Power Drift Monitoring**

All SAR testing is under the EUT install full charged battery and transmit maximum output power. In DASy measurement software, the power reference measurement and power drift measurement procedures are used for monitoring the power drift of EUT during SAR test. Both these procedures measure the field at a specified reference position before and after the SAR testing. The software will calculate the field difference in dB. If the power drifts more than 5%, the SAR will be retested.



### 9. Test Equipment List

Manufacturer	Name of Equipment	Type/Model	Serial Number	Calibration	
				Last Cal.	Due Date
SPEAG	750MHz System Validation Kit	D750V3	1012	May. 18, 2016	May. 17, 2017
SPEAG	835MHz System Validation Kit	D835V2	499	Mar. 21, 2016	Mar. 20, 2017
SPEAG	1750MHz System Validation Kit	D1750V2	1068	Nov. 16, 2016	Nov. 15, 2017
SPEAG	1900MHz System Validation Kit	D1900V2	5d041	Sep. 30, 2016	Sep. 29, 2017
SPEAG	2450MHz System Validation Kit	D2450V2	926	Jul. 25, 2016	Jul. 24, 2017
SPEAG	2600MHz System Validation Kit	D2600V2	1008	Aug. 30, 2016	Aug. 29, 2017
SPEAG	5GHz System Validation Kit	D5GHzV2	1040	Jun. 17, 2016	Jun. 16, 2017
SPEAG	Data Acquisition Electronics	DAE4	1388	Oct. 10, 2016	Oct. 09, 2017
SPEAG	Data Acquisition Electronics	DAE3	495	May. 27, 2016	May. 26, 2017
SPEAG	Data Acquisition Electronics	DAE4	914	Jan. 06, 2017	Jan. 05, 2018
SPEAG	Data Acquisition Electronics	DAE4	778	May. 12, 2016	May. 11, 2017
SPEAG	Dosimetric E-Field Probe	EX3DV4	3697	Oct. 25, 2016	Oct. 24, 2017
SPEAG	Dosimetric E-Field Probe	EX3DV4	3925	May. 26, 2016	May. 25, 2017
SPEAG	Dosimetric E-Field Probe	EX3DV4	3578	May. 11, 2016	May. 10, 2017
SPEAG	Dosimetric E-Field Probe	ES3DV3	3270	Aug. 26, 2016	Aug. 25, 2017
WonDer	Thermometer	WD-5015	TM685	Oct. 12, 2016	Oct. 11, 2017
WonDer	Thermometer	WD-5015	TM642	Oct. 12, 2016	Oct. 11, 2017
WonDer	Thermometer	WD-5015	TM281	Oct. 12, 2016	Oct. 11, 2017
Wisewind	Thermometer	HTC-1	TM225	Oct. 12, 2016	Oct. 11, 2017
Anritsu	Radio Communication Analyzer	MT8820C	6201381760	May. 10, 2016	May. 09, 2017
Agilent	Wireless Communication Test Set	E5515C	MY50266977	May. 17, 2016	May. 16, 2017
SPEAG	Device Holder	N/A	N/A	N/A	N/A
Anritsu	Signal Generator	MG3710A	6201502524	Dec. 09, 2016	Dec. 08, 2017
Agilent	ENA Network Analyzer	E5071C	MY46316648	Jan. 04, 2017	Jan. 03, 2018
SPEAG	Dielectric Probe Kit	DAK-3.5	1126	Jul. 19, 2016	Jul. 18, 2017
LINE SEIKI	Digital Thermometer	LKMelectronic	DTM3000SPEZIAL	Sep. 05, 2016	Sep. 04, 2017
Anritsu	Power Meter	ML2495A	1419002	May. 10, 2016	May. 09, 2017
Anritsu	Power Sensor	MA2411B	1339124	May. 10, 2016	May. 09, 2017
Anritsu	Spectrum Analyzer	MS2830A	6201396378	Jun. 21, 2016	Jun. 20, 2017
Mini-Circuits	Power Amplifier	ZVE-8G+	D120604	Mar. 16, 2016	Mar. 15, 2017
Mini-Circuits	Power Amplifier	ZHL-42W+	QA1344002	Mar. 16, 2016	Mar. 15, 2017
ATM	Dual Directional Coupler	C122H-10	P610410z-02	Note 1	
Woken	Attenuator 1	WK0602-XX	N/A	Note 1	
PE	Attenuator 2	PE7005-10	N/A	Note 1	
PE	Attenuator 3	PE7005- 3	N/A	Note 1	

**General Note:**

1. Prior to system verification and validation, the path loss from the signal generator to the system check source and the power meter, which includes the amplifier, cable, attenuator and directional coupler, was measured by the network analyzer. The reading of the power meter was offset by the path loss difference between the path to the power meter and the path to the system check source to monitor the actual power level fed to the system check source.

## 10. System Verification

### 10.1 Tissue Simulating Liquids

For the measurement of the field distribution inside the SAM phantom with DASY, the phantom must be filled with around 25 liters of homogeneous body tissue simulating liquid. For head SAR testing, the liquid height from the ear reference point (ERP) of the phantom to the liquid top surface is larger than 15 cm, which is shown in Fig. 10.1. For body SAR testing, the liquid height from the center of the flat phantom to the liquid top surface is larger than 15 cm, which is shown in Fig. 10.2.

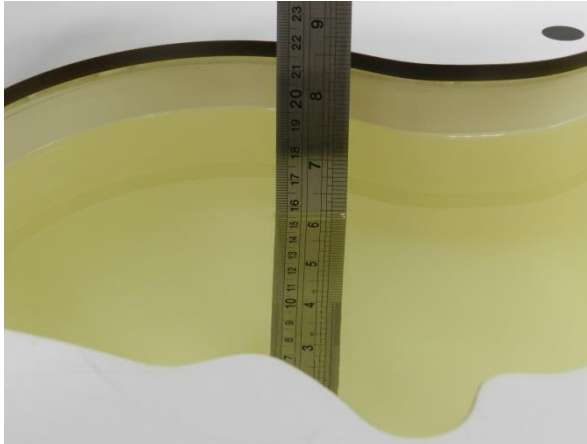


Fig 10.1 Photo of Liquid Height for Head SAR

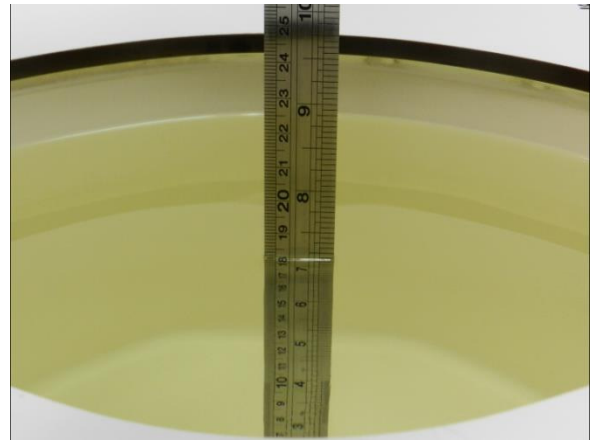


Fig 10.2 Photo of Liquid Height for Body SAR



**10.2 Tissue Verification**

The following tissue formulations are provided for reference only as some of the parameters have not been thoroughly verified. The composition of ingredients may be modified accordingly to achieve the desired target tissue parameters required for routine SAR evaluation.

Frequency (MHz)	Water (%)	Sugar (%)	Cellulose (%)	Salt (%)	Preventol (%)	DGBE (%)	Conductivity (σ)	Permittivity (εr)
<b>For Head</b>								
750	41.1	57.0	0.2	1.4	0.2	0	0.89	41.9
835	40.3	57.9	0.2	1.4	0.2	0	0.90	41.5
900	40.3	57.9	0.2	1.4	0.2	0	0.97	41.5
1800, 1900, 2000	55.2	0	0	0.3	0	44.5	1.40	40.0
2450	55.0	0	0	0	0	45.0	1.80	39.2
2600	54.8	0	0	0.1	0	45.1	1.96	39.0
<b>For Body</b>								
750	51.7	47.2	0	0.9	0.1	0	0.96	55.5
835	50.8	48.2	0	0.9	0.1	0	0.97	55.2
900	50.8	48.2	0	0.9	0.1	0	1.05	55.0
1800, 1900, 2000	70.2	0	0	0.4	0	29.4	1.52	53.3
2450	68.6	0	0	0	0	31.4	1.95	52.7
2600	68.1	0	0	0.1	0	31.8	2.16	52.5

**Simulating Liquid for 5GHz, Manufactured by SPEAG**

Ingredients	(% by weight)
Water	64~78%
Mineral oil	11~18%
Emulsifiers	9~15%
Additives and Salt	2~3%



**<Tissue Dielectric Parameter Check Results>**

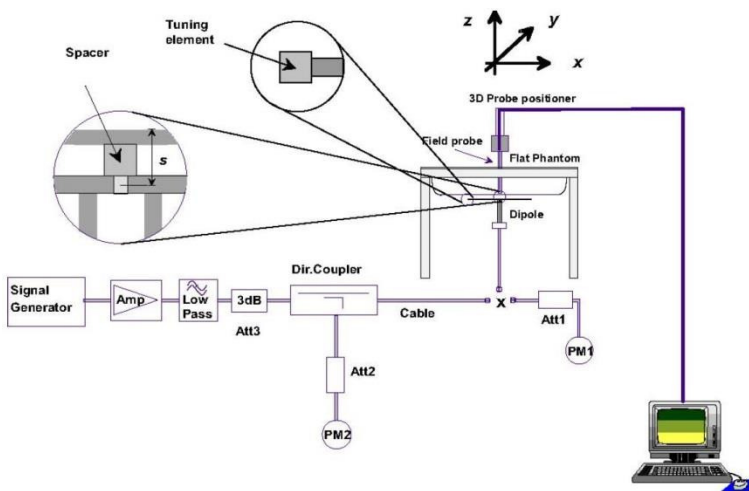
Frequency (MHz)	Tissue Type	Liquid Temp. (°C)	Conductivity ( $\sigma$ )	Permittivity ( $\epsilon_r$ )	Conductivity Target ( $\sigma$ )	Permittivity Target ( $\epsilon_r$ )	Delta ( $\sigma$ ) (%)	Delta ( $\epsilon_r$ ) (%)	Limit (%)	Date
750	HSL	22.4	0.893	43.172	0.89	41.90	0.34	3.04	±5	2017/2/10
750	MSL	22.4	0.958	55.281	0.96	55.50	-0.21	-0.39	±5	2017/2/10
835	HSL	22.2	0.888	41.996	0.90	41.50	-1.33	1.20	±5	2017/2/9
835	MSL	22.5	0.945	53.910	0.97	55.20	-2.58	-2.34	±5	2017/2/10
1750	HSL	22.7	1.335	39.286	1.37	40.10	-2.55	-2.03	±5	2017/2/15
1750	MSL	22.4	1.511	55.582	1.49	53.40	1.41	4.09	±5	2017/2/14
1900	HSL	22.7	1.377	39.628	1.40	40.00	-1.64	-0.93	±5	2017/2/15
1900	MSL	22.5	1.567	54.778	1.52	53.30	3.09	2.77	±5	2017/2/15
1900	MSL	22.4	1.535	55.270	1.52	53.30	0.99	3.70	±5	2017/2/16
2450	HSL	22.4	1.781	38.996	1.80	39.20	-1.06	-0.52	±5	2017/2/26
2450	MSL	22.4	1.937	53.996	1.95	52.70	-0.67	2.46	±5	2017/2/25
2600	HSL	22.6	1.929	38.317	1.96	39.00	-1.58	-1.75	±5	2017/2/14
2600	MSL	22.3	2.206	53.322	2.16	52.50	2.13	1.57	±5	2017/2/13
5200	MSL	22.5	5.475	47.648	5.30	49.00	3.30	-2.76	±5	2017/2/22
5300	HSL	22.5	4.771	36.528	4.76	35.90	0.23	1.75	±5	2017/2/22
5300	MSL	22.5	5.607	47.466	5.42	48.90	3.45	-2.93	±5	2017/2/22
5300	MSL	22.3	5.578	47.232	5.42	48.90	2.92	-3.41	±5	2017/2/23
5600	HSL	22.5	5.083	36.149	5.07	35.50	0.26	1.83	±5	2017/2/22
5600	MSL	22.5	6.004	46.918	5.77	48.50	4.06	-3.26	±5	2017/2/22
5600	MSL	22.3	5.973	46.684	5.77	48.50	3.52	-3.74	±5	2017/2/23
5800	HSL	22.5	5.302	35.901	5.27	35.30	0.61	1.70	±5	2017/2/22
5800	MSL	22.5	6.279	46.572	6.00	48.20	4.65	-3.38	±5	2017/2/22
5800	MSL	22.3	6.247	46.337	6.00	48.20	4.12	-3.87	±5	2017/2/23

**10.3 System Performance Check Results**

Comparing to the original SAR value provided by SPEAG, the verification data should be within its specification of 10 %. Below table shows the target SAR and measured SAR after normalized to 1W input power. The table below indicates the system performance check can meet the variation criterion and the plots can be referred to Appendix A of this report.

Date	Frequency (MHz)	Tissue Type	Input Power (mW)	Dipole S/N	Probe S/N	DAE S/N	Measured 1g SAR (W/kg)	Targeted 1g SAR (W/kg)	Normalized 1g SAR (W/kg)	Deviation (%)
2017/2/10	750	HSL	250	D750V3-1012	ES3DV3 - SN3270	DAE4 Sn778	2.17	8.21	8.68	5.72
2017/2/10	750	MSL	250	D750V3-1012	ES3DV3 - SN3270	DAE4 Sn778	2.31	8.72	9.24	5.96
2017/2/9	835	HSL	250	D835V2-499	ES3DV3 - SN3270	DAE4 Sn778	2.41	9.14	9.64	5.47
2017/2/10	835	MSL	250	D835V2-499	ES3DV3 - SN3270	DAE4 Sn778	2.52	9.52	10.08	5.88
2017/2/15	1750	HSL	250	D1750V2-1068	ES3DV3 - SN3270	DAE4 Sn778	8.75	36.60	35.00	-4.37
2017/2/14	1750	MSL	250	D1750V2-1068	EX3DV4 - SN3697	DAE4 Sn1388	9.09	36.20	36.36	0.44
2017/2/15	1900	HSL	250	D1900V2-5d041	ES3DV3 - SN3270	DAE4 Sn778	9.46	40.50	37.84	-6.57
2017/2/15	1900	MSL	250	D1900V2-5d041	EX3DV4 - SN3697	DAE4 Sn1388	9.69	38.80	38.76	-0.10
2017/2/16	1900	MSL	250	D1900V2-5d041	ES3DV3 - SN3270	DAE4 Sn778	9.99	38.80	39.96	2.99
2017/2/26	2450	HSL	250	D2450V2-926	EX3DV4 - SN3578	DAE4 Sn914	13.10	52.80	52.40	-0.76
2017/2/25	2450	MSL	250	D2450V2-926	EX3DV4 - SN3925	DAE3 Sn495	13.30	51.20	53.20	3.91
2017/2/14	2600	HSL	250	D2600V2-1008	ES3DV3 - SN3270	DAE4 Sn778	14.90	56.80	59.60	4.93
2017/2/13	2600	MSL	250	D2600V2-1008	ES3DV3 - SN3270	DAE4 Sn778	14.60	55.20	58.40	5.80
2017/2/22	5200	MSL	100	D5GHzV2-1040	EX3DV4 - SN3925	DAE3 Sn495	7.78	72.90	77.80	6.72
2017/2/22	5300	HSL	100	D5GHzV2-1040	EX3DV4 - SN3925	DAE3 Sn495	8.45	81.70	84.50	3.43
2017/2/22	5300	MSL	100	D5GHzV2-1040	EX3DV4 - SN3925	DAE3 Sn495	8.14	76.40	81.40	6.54
2017/2/23	5300	MSL	100	D5GHzV2-1040	EX3DV4 - SN3925	DAE3 Sn495	8.10	76.40	81.00	6.02
2017/2/22	5600	HSL	100	D5GHzV2-1040	EX3DV4 - SN3925	DAE3 Sn495	8.60	80.50	86.00	6.83
2017/2/22	5600	MSL	100	D5GHzV2-1040	EX3DV4 - SN3925	DAE3 Sn495	7.77	78.40	77.70	-0.89
2017/2/23	5600	MSL	100	D5GHzV2-1040	EX3DV4 - SN3925	DAE3 Sn495	7.73	78.40	77.30	-1.40
2017/2/22	5800	HSL	100	D5GHzV2-1040	EX3DV4 - SN3925	DAE3 Sn495	7.87	75.90	78.70	3.69
2017/2/22	5800	MSL	100	D5GHzV2-1040	EX3DV4 - SN3925	DAE3 Sn495	7.55	75.20	75.50	0.40
2017/2/23	5800	MSL	100	D5GHzV2-1040	EX3DV4 - SN3925	DAE3 Sn495	7.51	75.20	75.10	-0.13

Date	Frequency (MHz)	Tissue Type	Input Power (mW)	Dipole S/N	Probe S/N	DAE S/N	Measured 10g SAR (W/kg)	Targeted 10g SAR (W/kg)	Normalized 10g SAR (W/kg)	Deviation (%)
2017/2/14	1750	MSL	250	D1750V2-1068	EX3DV4 - SN3697	DAE4 Sn1388	4.98	19.40	19.92	2.68
2017/2/22	5300	MSL	100	D5GHzV2-1040	EX3DV4 - SN3925	DAE3 Sn495	2.19	21.40	21.90	2.34
2017/2/22	5600	MSL	100	D5GHzV2-1040	EX3DV4 - SN3925	DAE3 Sn495	2.10	21.90	21.00	-4.11



**Fig 8.3.1 System Performance Check Setup**



**Fig 8.3.2 Setup Photo**

## 11. RF Exposure Positions

### 11.1 Ear and handset reference point

Figure 9.1.1 shows the front, back, and side views of the SAM phantom. The center-of-mouth reference point is labeled "M," the left ear reference point (ERP) is marked "LE," and the right ERP is marked "RE." Each ERP is 15 mm along the B-M (back-mouth) line behind the entrance-to-ear-canal (EEC) point, as shown in Figure 9.1.2 The Reference Plane is defined as passing through the two ear reference points and point M. The line N-F (neck-front), also called the reference pivoting line, is normal to the Reference Plane and perpendicular to both a line passing through RE and LE and the B-M line (see Figure 9.1.3). Both N-F and B-M lines should be marked on the exterior of the phantom shell to facilitate handset positioning. Posterior to the N-F line the ear shape is a flat surface with 6 mm thickness at each ERP, and forward of the N-F line the ear is truncated, as illustrated in Figure 9.1.2. The ear truncation is introduced to preclude the ear lobe from interfering with handset tilt, which could lead to unstable positioning at the cheek.

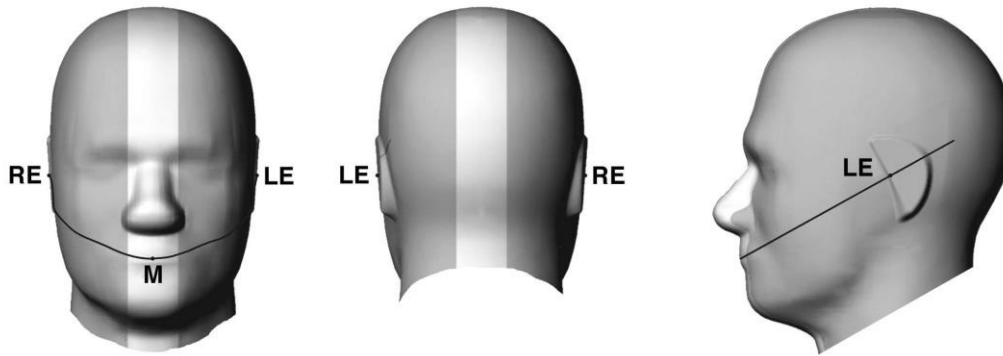


Fig 9.1.1 Front, back, and side views of SAM twin phantom

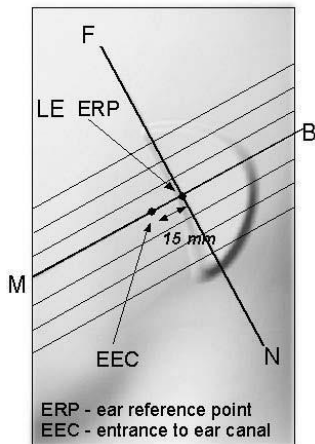


Fig 9.1.2 Close-up side view of phantom showing the ear region.

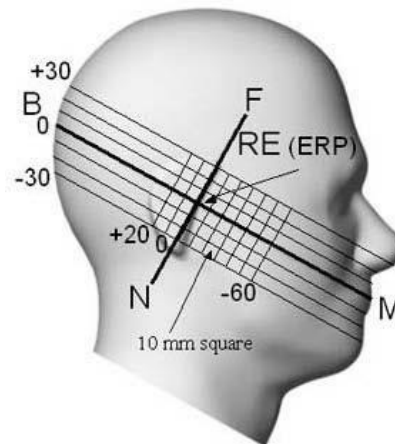


Fig 9.1.3 Side view of the phantom showing relevant markings and seven cross-sectional plane locations

### 11.2 Definition of the cheek position

1. Ready the handset for talk operation, if necessary. For example, for handsets with a cover piece (flip cover), open the cover. If the handset can transmit with the cover closed, both configurations must be tested.
2. Define two imaginary lines on the handset—the vertical centerline and the horizontal line. The vertical centerline passes through two points on the front side of the handset—the midpoint of the width  $w_t$  of the handset at the level of the acoustic output (point A in Figure 9.2.1 and Figure 9.2.2), and the midpoint of the width  $w_b$  of the bottom of the handset (point B). The horizontal line is perpendicular to the vertical centerline and passes through the center of the acoustic output (see Figure 9.2.1). The two lines intersect at point A. Note that for many handsets, point A coincides with the center of the acoustic output; however, the acoustic output may be located elsewhere on the horizontal line. Also note that the vertical centerline is not necessarily parallel to the front face of the handset (see Figure 9.2.2), especially for clamshell handsets, handsets with flip covers, and other irregularly-shaped handsets.
3. Position the handset close to the surface of the phantom such that point A is on the (virtual) extension of the line passing through points RE and LE on the phantom (see Figure 9.2.3), such that the plane defined by the vertical centerline and the horizontal line of the handset is approximately parallel to the sagittal plane of the phantom.
4. Translate the handset towards the phantom along the line passing through RE and LE until handset point A touches the pinna at the ERP.
5. While maintaining the handset in this plane, rotate it around the LE-RE line until the vertical centerline is in the plane normal to the plane containing B-M and N-F lines, i.e., the Reference Plane.
6. Rotate the handset around the vertical centerline until the handset (horizontal line) is parallel to the N-F line.
7. While maintaining the vertical centerline in the Reference Plane, keeping point A on the line passing through RE and LE, and maintaining the handset contact with the pinna, rotate the handset about the N-F line until any point on the handset is in contact with a phantom point below the pinna on the cheek. See Figure 9.2.3. The actual rotation angles should be documented in the test report.

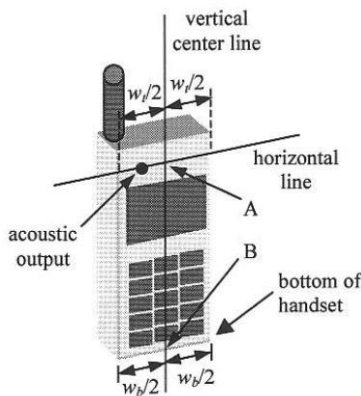


Fig 9.2.1 Handset vertical and horizontal reference lines—“fixed case”

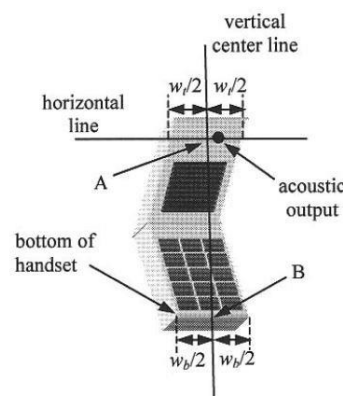


Fig 9.2.2 Handset vertical and horizontal reference lines—“clam-shell case”

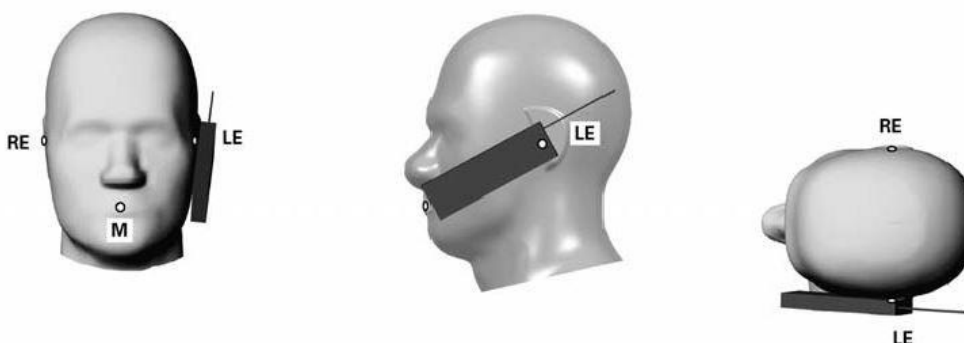
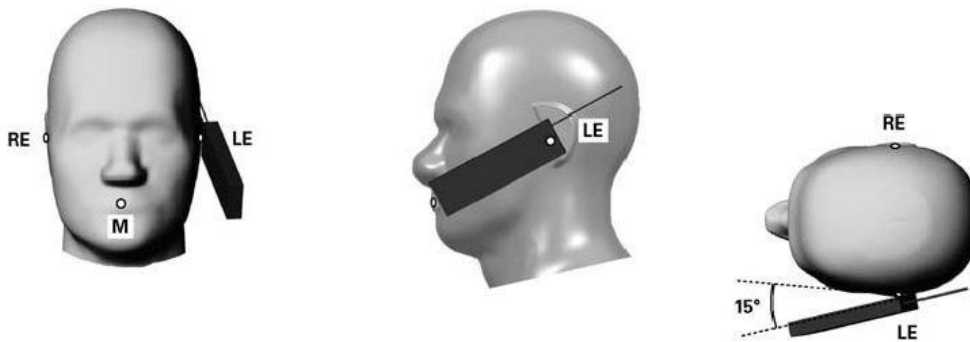


Fig 9.2.3 cheek or touch position. The reference points for the right ear (RE), left ear (LE), and mouth (M), which establish the Reference Plane for handset positioning, are indicated.



**11.3 Definition of the tilt position**

1. Ready the handset for talk operation, if necessary. For example, for handsets with a cover piece (flip cover), open the cover. If the handset can transmit with the cover closed, both configurations must be tested.
2. While maintaining the orientation of the handset, move the handset away from the pinna along the line passing through RE and LE far enough to allow a rotation of the handset away from the cheek by 15°.
3. Rotate the handset around the horizontal line by 15°.
4. While maintaining the orientation of the handset, move the handset towards the phantom on the line passing through RE and LE until any part of the handset touches the ear. The tilt position is obtained when the contact point is on the pinna. See Figure 9.3.1. If contact occurs at any location other than the pinna, e.g., the antenna at the back of the phantom head, the angle of the handset should be reduced. In this case, the tilt position is obtained if any point on the handset is in contact with the pinna and a second point

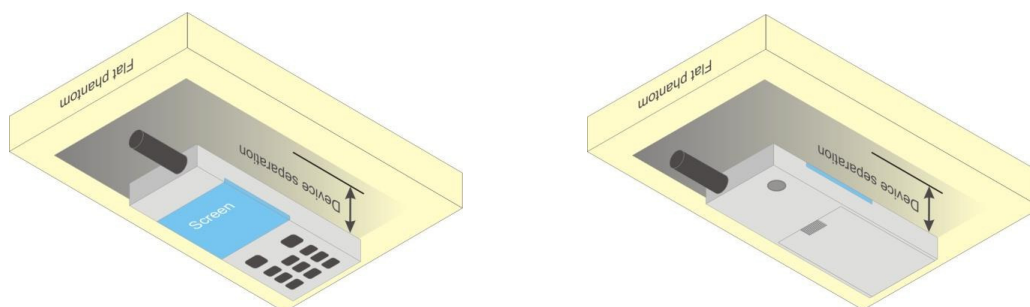


**Fig 9.3.1 Tilt position. The reference points for the right ear (RE), left ear (LE), and mouth (M), which define the Reference Plane for handset positioning, are indicated.**

**11.4 Body Worn Accessory**

Body-worn operating configurations are tested with the belt-clips and holsters attached to the device and positioned against a flat phantom in a normal use configuration (see Figure 9.4). Per KDB648474 D04v01r03, body-worn accessory exposure is typically related to voice mode operations when handsets are carried in body-worn accessories. The body-worn accessory procedures in FCC KDB 447498 D01v06 should be used to test for body-worn accessory SAR compliance, without a headset connected to it. This enables the test results for such configuration to be compatible with that required for hotspot mode when the body-worn accessory test separation distance is greater than or equal to that required for hotspot mode, when applicable. When the reported SAR for body-worn accessory, measured without a headset connected to the handset is > 1.2 W/kg, the highest reported SAR configuration for that wireless mode and frequency band should be repeated for that body-worn accessory with a handset attached to the handset.

Accessories for body-worn operation configurations are divided into two categories: those that do not contain metallic components and those that do contain metallic components. When multiple accessories that do not contain metallic components are supplied with the device, the device is tested with only the accessory that dictates the closest spacing to the body. Then multiple accessories that contain metallic components are tested with the device with each accessory. If multiple accessories share an identical metallic component (i.e. the same metallic belt-clip used with different holsters with no other metallic components) only the accessory that dictates the closest spacing to the body is tested.



**Fig 9.4 Body Worn Position**



### **11.5 Product Specific**

For smart phones with a display diagonal dimension > 15.0 cm or an overall diagonal dimension > 16.0 cm that provide similar mobile web access and multimedia support found in mini-tablets or UMPC mini-tablets that support voice calls next to the ear, According to KDB648474 D04v01r03, the following phablet procedures should be applied to evaluate SAR compliance for each applicable wireless modes and frequency band. Devices marketed as phablets, regardless of form factors and operating characteristics must be tested as a phablet to determine SAR compliance

1. The normally required head and body-worn accessory SAR test procedures for handsets, including hotspot mode, must be applied.
2. The UMPC mini-tablet procedures must also be applied to test the SAR of all surfaces and edges with an antenna located at  $\leq 25$  mm from that surface or edge, in direct contact with a flat phantom, for 10-g extremity SAR according to the body-equivalent tissue dielectric parameters in KDB 865664 to address interactive hand use exposure conditions.6 The UMPC mini-tablet 1-g SAR at 5 mm is not required. When hotspot mode applies, 10-g extremity SAR is required only for the surfaces and edges with hotspot mode 1-g reported SAR > 1.2 W/kg.

### **11.6 Wireless Router**

Some battery-operated handsets have the capability to transmit and receive user through simultaneous transmission of WIFI simultaneously with a separate licensed transmitter. The FCC has provided guidance in FCC KDB Publication 941225 D06 v02r01 where SAR test considerations for handsets ( $L \times W \geq 9$  cm x 5 cm) are based on a composite test separation distance of 10mm from the front, back and edges of the device containing transmitting antennas within 2.5cm of their edges, determined from general mixed use conditions for this type of devices. Since the hotspot SAR results may overlap with the body-worn accessory SAR requirements, the more conservative configurations can be considered, thus excluding some body-worn accessory SAR tests.

When the user enables the personal wireless router functions for the handset, actual operations include simultaneous transmission of both the WIFI transmitter and another licensed transmitter. Both transmitters often do not transmit at the same transmitting frequency and thus cannot be evaluated for SAR under actual use conditions due to the limitations of the SAR assessment probes. Therefore, SAR must be evaluated for each frequency transmission and mode separately and spatially summed with the WIFI transmitter according to FCC KDB Publication 447498 D01v06 publication procedures. The "Portable Hotspot" feature on the handset was NOT activated during SAR assessments, to ensure the SAR measurements were evaluated for a single transmission frequency RF signal at a time.



## 12. Conducted RF Output Power (Unit: dBm)

### <GSM Conducted Power>

- For DTM multi-slot class mode, the device was linked with base station simulator (Agilent E5515C) and transmit maximum power on maximum number of TX slots, i.e. one CS timeslot, and additional PS timeslots (1 for DTM class 5 and 9, 2 for DTM class 11) in one TDMA frame.
- Agilent E5515C was used to setup the device operated under DTM mode for power measurement and SAR testing. For conducted power, the power of the burst for voice and the power of the bursts for data was reported separately in the table above, and the frame-average power is derived below to determine SAR testing.

$$DTM \text{ frame average power (dBm)} = 10 * \log [\sum(\text{power of each slot, in mW})/8]$$

- Per KDB 447498 D01v06, the maximum output power channel is used for SAR testing and for further SAR test reduction.
- Per KDB 941225 D01v03r01, for SAR test reduction for GSM / GPRS / EDGE / DTM modes is determined by the source-based time-averaged output power including tune-up tolerance. The mode with highest specified time-averaged output power should be tested for SAR compliance in the applicable exposure conditions. For modes with the same specified maximum output power and tolerance, the higher number time-slot configuration should be tested. Therefore, the GPRS (1Tx slots) for GSM850 and GPRS (4Tx slots) for GSM1900 are considered as the primary mode.
- Other configurations of GSM / GPRS / EDGE / DTM are considered as secondary modes. The 3G SAR test reduction procedure is applied, when the maximum output power and tune-up tolerance specified for production units in a secondary mode is  $\leq \frac{1}{4}$  dB higher than the primary mode, SAR measurement is not required for the secondary mode

GSM850		Burst Average Power (dBm)			Tune-up Limit (dBm)	Frame-Average Power (dBm)			Tune-up Limit (dBm)
TX Channel		128	189	251		128	189	251	
Frequency (MHz)		824.2	836.4	848.8		824.2	836.4	848.8	
GSM 1 Tx slot		32.65	32.73	32.72	33.00	23.65	23.73	23.72	24.00
GPRS 1 Tx slot		32.66	32.74	32.73	33.00	23.66	23.74	23.73	24.00
GPRS 2 Tx slots		28.34	28.23	28.35	28.50	22.34	22.23	22.35	22.50
GPRS 3 Tx slots		27.50	27.36	27.37	27.50	23.24	23.10	23.11	23.24
GPRS 4 Tx slots		26.36	26.26	26.20	26.50	23.36	23.26	23.20	23.50
EDGE 1 Tx slot		26.18	26.11	26.13	26.50	17.18	17.11	17.13	17.50
EDGE 2 Tx slots		24.97	25.03	25.01	25.50	18.97	19.03	19.01	19.50
EDGE 3 Tx slots		23.84	23.91	23.78	24.00	19.58	19.65	19.52	19.74
EDGE 4 Tx slots		21.61	21.66	21.79	22.00	18.61	18.66	18.79	19.00
DTM Multi-slot class 5	GSM 1 Tx slot	28.22	28.01	28.28	28.50	22.23	22.04	22.28	22.48
	GPRS 1 Tx slot	28.28	28.12	28.33	28.50				
DTM Multi-slot class 9	GSM 1 Tx slot	28.30	28.16	28.30	28.50	22.29	22.14	22.29	22.48
	GPRS 1 Tx slot	28.33	28.17	28.33	28.50				
DTM Multi-slot class 11	GSM 1 Tx slot	27.32	27.23	27.24	27.50	23.13	23.04	22.99	23.24
	GPRS 2 Tx slots	27.43	27.34	27.26	27.50				
DTM Multi-slot class 5	GSM 1 Tx slot	28.28	28.17	28.27	28.50	20.88	20.82	20.91	21.23
	EDGE 1 Tx slot	24.86	24.92	24.97	25.50				
DTM Multi-slot class 9	GSM 1 Tx slot	28.26	28.22	28.32	28.50	20.88	20.86	20.95	21.23
	EDGE 1 Tx slot	24.92	24.94	25.00	25.50				
DTM Multi-slot class 11	GSM 1 Tx slot	27.45	27.33	27.33	27.50	21.09	21.06	21.02	21.24
	EDGE 2 Tx slots	23.74	23.81	23.71	24.00				



GSM1900		Burst Average Power (dBm)			Tune-up Limit (dBm)	Frame-Average Power (dBm)			Tune-up Limit (dBm)
TX Channel		512	661	810		512	661	810	
Frequency (MHz)		1850.2	1880	1909.8		1850.2	1880	1909.8	
GSM 1 Tx slot		29.60	29.86	30.04	30.50	20.60	20.86	21.04	21.50
GPRS 1 Tx slot		29.61	29.87	30.05	30.50	20.61	20.87	21.05	21.50
GPRS 2 Tx slots		27.52	27.67	27.92	28.00	21.52	21.67	21.92	22.00
GPRS 3 Tx slots		26.49	26.65	26.97	27.00	22.23	22.39	22.71	22.74
GPRS 4 Tx slots		25.33	25.60	25.82	26.00	22.33	22.60	22.82	23.00
EDGE 1 Tx slot		25.13	25.28	25.53	26.00	16.13	16.28	16.53	17.00
EDGE 2 Tx slots		23.95	24.20	24.42	24.50	17.95	18.20	18.42	18.50
EDGE 3 Tx slots		22.94	23.10	23.30	23.50	18.68	18.84	19.04	19.24
EDGE 4 Tx slots		21.83	22.00	22.28	22.50	18.83	19.00	19.28	19.50
DTM Multi-slot class 5	GSM 1 Tx slot	27.41	27.55	27.77	28.00	21.43	21.55	21.80	21.98
	GPRS 1 Tx slot	27.49	27.59	27.88	28.00				
DTM Multi-slot class 9	GSM 1 Tx slot	27.45	27.64	27.82	28.00	21.44	21.63	21.81	21.98
	GPRS 1 Tx slot	27.47	27.66	27.85	28.00				
DTM Multi-slot class 11	GSM 1 Tx slot	26.36	26.47	26.84	27.00	22.15	22.28	22.63	22.74
	GPRS 2 Tx slots	26.43	26.58	26.91	27.00				
DTM Multi-slot class 5	GSM 1 Tx slot	27.51	27.60	27.85	28.00	20.04	20.18	20.41	20.57
	EDGE 1 Tx slot	23.87	24.13	24.31	24.50				
DTM Multi-slot class 9	GSM 1 Tx slot	27.49	27.65	27.88	28.00	20.02	20.24	20.42	20.57
	EDGE 1 Tx slot	23.85	24.19	24.28	24.50				
DTM Multi-slot class 11	GSM 1 Tx slot	26.44	26.64	26.94	27.00	20.18	20.34	20.59	20.74
	EDGE 2 Tx slots	22.93	23.05	23.25	23.50				

**<WCDMA Conducted Power>**

1. The following tests were conducted according to the test requirements outlines in 3GPP TS 34.121 specification.
2. The procedures in KDB 941225 D01v03r01 are applied for 3GPP Rel. 6 HSPA to configure the device in the required sub-test mode(s) to determine SAR test exclusion.
3. For HSPA+ devices supporting 16 QAM in the uplink, power measurements procedure is according to the configurations in Table C.11.1.4 of 3GPP TS 34.121-1
4. For DC-HSDPA, the device was configured according to the H-Set 12, Fixed Reference Channel (FRC) configuration in Table C.8.1.12 of 3GPP TS 34.121-1, with the primary and the secondary serving HS-DSCH Cell enabled during the power measurement.

A summary of these settings are illustrated below:

**HSDPA Setup Configuration:**

- a. The EUT was connected to Base Station Agilent E5515C referred to the Setup Configuration.
- b. The RF path losses were compensated into the measurements.
- c. A call was established between EUT and Base Station with following setting:
  - i. Set Gain Factors ( $\beta_c$  and  $\beta_d$ ) and parameters were set according to each
  - ii. Specific sub-test in the following table, C10.1.4, quoted from the TS 34.121
  - iii. Set RMC 12.2Kbps + HSDPA mode.
  - iv. Set Cell Power = -86 dBm
  - v. Set HS-DSCH Configuration Type to FRC (H-set 1, QPSK)
  - vi. Select HSDPA Uplink Parameters
  - vii. Set Delta ACK, Delta NACK and Delta CQI = 8
  - viii. Set Ack-Nack Repetition Factor to 3
  - ix. Set CQI Feedback Cycle (k) to 4 ms
  - x. Set CQI Repetition Factor to 2
  - xi. Power Ctrl Mode = All Up bits
- d. The transmitted maximum output power was recorded.

**Table C.10.1.4:  $\beta$  values for transmitter characteristics tests with HS-DPCCH**

Sub-test	$\beta_c$	$\beta_d$	$\beta_d$ (SF)	$\beta_c/\beta_d$	$\beta_{HS}$ (Note 1, Note 2)	CM (dB) (Note 3)	MPR (dB) (Note 3)
1	2/15	15/15	64	2/15	4/15	0.0	0.0
2	12/15 (Note 4)	15/15 (Note 4)	64	12/15 (Note 4)	24/15	1.0	0.0
3	15/15	8/15	64	15/8	30/15	1.5	0.5
4	15/15	4/15	64	15/4	30/15	1.5	0.5

Note 1:  $\Delta_{ACK}, \Delta_{NACK}$  and  $\Delta_{CQI} = 30/15$  with  $\beta_{HS} = 30/15 * \beta_c$ .

Note 2: For the HS-DPCCH power mask requirement test in clause 5.2C, 5.7A, and the Error Vector Magnitude (EVM) with HS-DPCCH test in clause 5.13.1A, and HSDPA EVM with phase discontinuity in clause 5.13.1AA,  $\Delta_{ACK}$  and  $\Delta_{NACK} = 30/15$  with  $\beta_{HS} = 30/15 * \beta_c$ , and  $\Delta_{CQI} = 24/15$  with  $\beta_{HS} = 24/15 * \beta_c$ .

Note 3: CM = 1 for  $\beta_c/\beta_d = 12/15, \beta_{HS}/\beta_c = 24/15$ . For all other combinations of DPDCCH, DPCCH and HS-DPCCH the MPR is based on the relative CM difference. This is applicable for only UEs that support HSDPA in release 6 and later releases.

Note 4: For subtest 2 the  $\beta_c/\beta_d$  ratio of 12/15 for the TFC during the measurement period (TF1, TF0) is achieved by setting the signalled gain factors for the reference TFC (TF1, TF1) to  $\beta_c = 11/15$  and  $\beta_d = 15/15$ .

**Setup Configuration**

**HSUPA Setup Configuration:**

- a. The EUT was connected to Base Station Agilent E5515C referred to the Setup Configuration.
- b. The RF path losses were compensated into the measurements.
- c. A call was established between EUT and Base Station with following setting \* :
  - i. Call Configs = 5.2B, 5.9B, 5.10B, and 5.13.2B with QPSK
  - ii. Set the Gain Factors ( $\beta_c$  and  $\beta_d$ ) and parameters (AG Index) were set according to each specific sub-test in the following table, C11.1.3, quoted from the TS 34.121
  - iii. Set Cell Power = -86 dBm
  - iv. Set Channel Type = 12.2k + HSPA
  - v. Set UE Target Power
  - vi. Power Ctrl Mode= Alternating bits
  - vii. Set and observe the E-TFCl
  - viii. Confirm that E-TFCl is equal to the target E-TFCl of 75 for sub-test 1, and other subtest's E-TFCl
- d. The transmitted maximum output power was recorded.

**Table C.11.1.3:  $\beta$  values for transmitter characteristics tests with HS-DPCCH and E-DCH**

Sub-test	$\beta_c$	$\beta_d$	$\beta_d$ (SF)	$\beta_c/\beta_d$	$\beta_{HS}$ (Note 1)	$\beta_{ec}$	$\beta_{ed}$ (Note 5) (Note 6)	$\beta_{ed}$ (SF)	$\beta_{ed}$ (Codes)	CM (dB) (Note 2)	MPR (dB) (Note 2)	AG Index (Note 6)	E-TFCl
1	11/15 (Note 3)	15/15 (Note 3)	64	11/15 (Note 3)	22/15	209/25	1309/225	4	1	1.0	0.0	20	75
2	6/15	15/15	64	6/15	12/15	12/15	94/75	4	1	3.0	2.0	12	67
3	15/15	9/15	64	15/9	30/15	30/15	$\beta_{ed1}: 47/15$ $\beta_{ed2}: 47/15$	4 4	2	2.0	1.0	15	92
4	2/15	15/15	64	2/15	4/15	2/15	56/75	4	1	3.0	2.0	17	71
5	15/15 (Note 4)	15/15 (Note 4)	64	15/15 (Note 4)	30/15	24/15	134/15	4	1	1.0	0.0	21	81

Note 1:  $\Delta_{ACK}, \Delta_{NACK}$  and  $\Delta_{CQI} = 30/15$  with  $\beta_{hs} = 30/15 * \beta_c$ .

Note 2: CM = 1 for  $\beta_c/\beta_d = 12/15, \beta_{hs}/\beta_c = 24/15$ . For all other combinations of DPDCH, DPCCH, HS- DPCCH, E-DPDCH and E-DPCCH the MPR is based on the relative CM difference.

Note 3: For subtest 1 the  $\beta_c/\beta_d$  ratio of 11/15 for the TFC during the measurement period (TF1, TF0) is achieved by setting the signalled gain factors for the reference TFC (TF1, TF1) to  $\beta_c = 10/15$  and  $\beta_d = 15/15$ .

Note 4: For subtest 5 the  $\beta_c/\beta_d$  ratio of 15/15 for the TFC during the measurement period (TF1, TF0) is achieved by setting the signalled gain factors for the reference TFC (TF1, TF1) to  $\beta_c = 14/15$  and  $\beta_d = 15/15$ .

Note 5: In case of testing by UE using E-DPDCH Physical Layer category 1, Sub-test 3 is omitted according to TS25.306 Table 5.1g.

Note 6:  $\beta_{ed}$  can not be set directly, it is set by Absolute Grant Value.

**Setup Configuration**

**DC-HSDPA 3GPP release 8 Setup Configuration:**

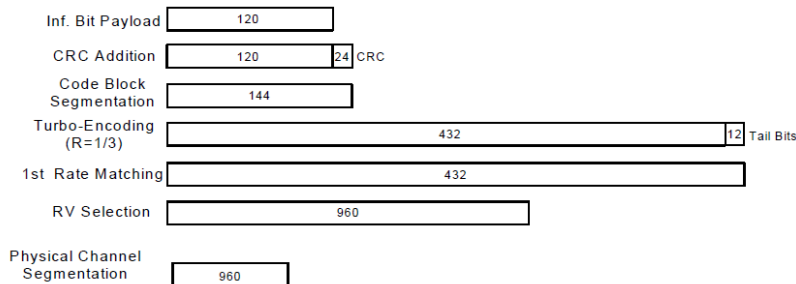
- a. The EUT was connected to Base Station Agilent E5515C referred to the Setup Configuration below
- b. The RF path losses were compensated into the measurements.
- c. A call was established between EUT and Base Station with following setting:
  - i. Set RMC 12.2Kbps + HSDPA mode.
  - ii. Set Cell Power = -25 dBm
  - iii. Set HS-DSCH Configuration Type to FRC (H-set 12, QPSK)
  - iv. Select HSDPA Uplink Parameters
  - v. Set Gain Factors ( $\beta_c$  and  $\beta_d$ ) and parameters were set according to each Specific sub-test in the following table, C10.1.4, quoted from the TS 34.121
    - a). Subtest 1:  $\beta_c/\beta_d=2/15$
    - b). Subtest 2:  $\beta_c/\beta_d=12/15$
    - c). Subtest 3:  $\beta_c/\beta_d=15/8$
    - d). Subtest 4:  $\beta_c/\beta_d=15/4$
  - vi. Set Delta ACK, Delta NACK and Delta CQI = 8
  - vii. Set Ack-Nack Repetition Factor to 3
  - viii. Set CQI Feedback Cycle (k) to 4 ms
  - ix. Set CQI Repetition Factor to 2
  - x. Power Ctrl Mode = All Up bits
- d. The transmitted maximum output power was recorded.

The following tests were conducted according to the test requirements outlines in 3GPP TS 34.121 specification. A summary of these settings are illustrated below:

**C.8.1.12 Fixed Reference Channel Definition H-Set 12**

**Table C.8.1.12: Fixed Reference Channel H-Set 12**

Parameter	Unit	Value
Nominal Avg. Inf. Bit Rate	kbps	60
Inter-TTI Distance	TTI's	1
Number of HARQ Processes	Processes	6
Information Bit Payload ( $N_{INF}$ )	Bits	120
Number Code Blocks	Blocks	1
Binary Channel Bits Per TTI	Bits	960
Total Available SML's in UE	SML's	19200
Number of SML's per HARQ Proc.	SML's	3200
Coding Rate		0.15
Number of Physical Channel Codes	Codes	1
Modulation		QPSK
Note 1: The RMC is intended to be used for DC-HSDPA mode and both cells shall transmit with identical parameters as listed in the table. Note 2: Maximum number of transmission is limited to 1, i.e., retransmission is not allowed. The redundancy and constellation version 0 shall be used.		



**Figure C.8.19: Coding rate for Fixed reference Channel H-Set 12 (QPSK)**

**Setup Configuration**

**HSPA+ 3GPP release 7 (uplink category 7) 16QAM, Setup Configuration:**

- a. The EUT was connected to Base Station Agilent E5515C referred to the Setup Configuration.
- b. The RF path losses were compensated into the measurements.
- c. A call was established between EUT and Base Station with following setting \* :
  - i. Call Configs = 5.2E:HSPA+:UL with 16QAM
  - ii. Set the Gain Factors ( $\beta_c$  and  $\beta_d$ ) and parameters (AG Index) were set according to each specific sub-test in the following table, C11.1.4, quoted from the TS 34.121-1 s5.2E
  - iii. Set Channel Parm
  - iv. Set Cell Power = -86 dBm
  - v. Set Channel Type = HSPA
  - vi. Set UE Target Power =21 dBm
  - vii. Power Ctrl Mode= All Up Bits
  - viii. Set Manual Uplink DPCH Bc/Bd = Manual
  - ix. Set Manual Uplink DPCH Bc and Bd=15,15(for 34.121-1 v8.10.0 table C11.1.4 sub-test 1)
  - x. Set HSPA Conn DL Channel Levels
  - xi. Set HS-SCCH Configs
  - xii. Set RB Test Mode Setup
  - xiii. Set Common HSUPA Parameters
  - xiv. Set Serving Grant
  - xv. Confirm that E-TFCI is equal to the target E-TFCI of 105 for sub-test 1, and other subtest's E-TFCI
- d. The transmitted maximum output power was recorded.

**Table C.11.1.4:  $\beta$  values for transmitter characteristics tests with HS-DPCCH and E-DCH with 16QAM**

Sub-test	$\beta_c$ (Note3)	$\beta_d$	$\beta_{HS}$ (Note1)	$\beta_{ec}$	$\beta_{ed}$ (2xSF2) (Note 4)	$\beta_{ed}$ (2xSF4) (Note 4)	CM (dB) (Note 2)	MPR (dB) (Note 2)	AG Index (Note 4)	E-TFCI (Note 5)	E-TFCI (boost)
1	1	0	30/15	30/15	$\beta_{ed1}$ : 30/15 $\beta_{ed2}$ : 30/15	$\beta_{ed3}$ : 24/15 $\beta_{ed4}$ : 24/15	3.5	2.5	14	105	105

Note 1:  $\Delta_{ACK}, \Delta_{NACK}$  and  $\Delta_{CQI} = 30/15$  with  $\beta_{HS} = 30/15 * \beta_c$ .

Note 2: CM = 3.5 and the MPR is based on the relative CM difference, MPR = MAX(CM-1,0).

Note 3: DPDCH is not configured, therefore the  $\beta_c$  is set to 1 and  $\beta_d = 0$  by default.

Note 4:  $\beta_{ed}$  can not be set directly; it is set by Absolute Grant Value.

Note 5: All the sub-tests require the UE to transmit 2SF2+2SF4 16QAM EDCH and they apply for UE using E-DPDCH category 7. E-DCH TTI is set to 2ms TTI and E-DCH table index = 2. To support these E-DCH configurations DPDCH is not allocated. The UE is signaled to use the extrapolation algorithm.

**Setup Configuration**





**<WCDMA Conducted Power>**

**General Note:**

1. Per KDB 941225 D01v03r01, for SAR testing is measured using a 12.2 kbps RMC with TPC bits configured to all "1's".
2. Per KDB 941225 D01v03r01, RMC 12.2kbps setting is used to evaluate SAR. If the maximum output power and tune-up tolerance specified for production units in HSDPA / HSUPA / DC-HSDPA is  $\leq \frac{1}{4}$  dB higher than RMC 12.2Kbps or when the highest reported SAR of the RMC12.2Kbps is scaled by the ratio of specified maximum output power and tune-up tolerance of HSDPA / HSUPA / DC-HSDPA to RMC12.2Kbps and the adjusted SAR is  $\leq 1.2$  W/kg, SAR measurement is not required for HSDPA / HSUPA / DC-HSDPA.

**<Default Power Mode >**

Band		WCDMA II			Tune-up Limit (dBm)	WCDMA IV			Tune-up Limit (dBm)	WCDMA V			Tune-up Limit (dBm)
TX Channel		9262	9400	9538		1312	1413	1513		4132	4182	4233	
Rx Channel		9662	9800	9938		1537	1638	1738		4357	4407	4458	
Frequency (MHz)		1852.4	1880	1907.6	1712.4	1732.6	1752.6	826.4	836.4	846.6			
3GPP Rel 99	AMR 12.2Kbps	23.70	23.75	23.96	24.00	23.71	23.97	23.91	24.00	23.67	23.71	23.69	24.00
3GPP Rel 99	RMC 12.2Kbps	23.70	23.75	23.97	24.00	23.73	23.98	23.95	24.00	23.69	23.75	23.71	24.00
3GPP Rel 6	HSDPA Subtest-1	22.65	22.74	22.90	24.00	23.27	23.39	23.40	24.00	22.89	22.82	22.93	24.00
3GPP Rel 6	HSDPA Subtest-2	22.65	22.82	22.94	24.00	23.34	23.38	23.49	24.00	22.97	22.95	23.07	24.00
3GPP Rel 6	HSDPA Subtest-3	22.18	22.35	22.46	23.50	22.87	22.91	22.94	23.50	22.42	22.47	22.58	23.50
3GPP Rel 6	HSDPA Subtest-4	22.18	22.46	22.46	23.50	22.88	22.91	22.94	23.50	22.47	22.48	22.60	23.50
3GPP Rel 8	DC-HSDPA Subtest-1	22.61	22.70	22.78	24.00	23.25	23.31	23.35	24.00	22.87	22.80	22.91	24.00
3GPP Rel 8	DC-HSDPA Subtest-2	22.62	22.79	22.80	24.00	23.32	23.35	23.47	24.00	22.95	22.91	23.05	24.00
3GPP Rel 8	DC-HSDPA Subtest-3	22.34	22.32	22.50	23.50	22.86	22.89	22.91	23.50	22.41	22.40	22.54	23.50
3GPP Rel 8	DC-HSDPA Subtest-4	22.12	22.39	22.34	23.50	22.84	22.89	22.91	23.50	22.40	22.41	22.58	23.50
3GPP Rel 6	HSUPA Subtest-1	22.43	22.79	22.74	24.00	22.61	23.04	22.66	24.00	22.64	22.78	22.99	24.00
3GPP Rel 6	HSUPA Subtest-2	21.56	21.39	21.53	23.00	22.00	21.87	21.79	23.00	21.94	21.58	21.67	23.00
3GPP Rel 6	HSUPA Subtest-3	21.28	21.43	21.37	23.00	21.99	21.78	21.88	23.00	21.78	21.78	21.69	23.00
3GPP Rel 6	HSUPA Subtest-4	21.63	21.68	21.93	23.00	22.33	22.50	22.44	23.00	22.45	22.48	22.26	23.00
3GPP Rel 6	HSUPA Subtest-5	22.75	22.88	23.00	24.00	23.20	23.10	23.30	24.00	22.90	22.80	22.90	24.00
3GPP Rel 7	HSPA+ (16QAM) Subtest-1	22.46	22.54	22.75	24.00	22.65	22.63	22.47	24.00	22.50	22.42	22.56	24.00

**<Reduced Power Mode>**

Band		WCDMA II			Tune-up Limit (dBm)	WCDMA IV			Tune-up Limit (dBm)
TX Channel		9262	9400	9538		1312	1413	1513	
Rx Channel		9662	9800	9938		1537	1638	1738	
Frequency (MHz)		1852.4	1880	1907.6	1712.4	1732.6	1752.6		
3GPP Rel 99	AMR 12.2Kbps	22.54	22.72	22.53	23.00	22.15	22.21	22.20	22.50
3GPP Rel 99	RMC 12.2Kbps	22.55	22.74	22.73	23.00	22.16	22.23	22.18	22.50
3GPP Rel 6	HSDPA Subtest-1	21.58	21.80	21.59	23.00	21.25	21.19	21.12	22.50
3GPP Rel 6	HSDPA Subtest-2	21.56	21.79	21.62	23.00	21.26	21.17	21.09	22.50
3GPP Rel 6	HSDPA Subtest-3	21.12	21.34	21.12	22.50	20.57	20.68	20.56	22.00
3GPP Rel 6	HSDPA Subtest-4	21.15	21.31	21.08	22.50	20.54	20.67	20.60	22.00
3GPP Rel 8	DC-HSDPA Subtest-1	21.47	21.68	21.47	23.00	21.15	21.05	21.02	22.50
3GPP Rel 8	DC-HSDPA Subtest-2	21.45	21.62	21.46	23.00	21.13	21.08	20.94	22.50
3GPP Rel 8	DC-HSDPA Subtest-3	21.01	21.25	21.02	22.50	20.47	20.58	20.46	22.00
3GPP Rel 8	DC-HSDPA Subtest-4	21.03	21.19	21.01	22.50	21.45	20.59	20.45	22.00
3GPP Rel 6	HSUPA Subtest-1	21.48	21.79	21.67	23.00	20.77	21.05	20.92	22.50
3GPP Rel 6	HSUPA Subtest-2	20.32	20.57	20.48	21.00	20.01	20.23	20.14	20.50
3GPP Rel 6	HSUPA Subtest-3	20.52	20.88	20.70	22.00	19.51	19.73	19.56	21.50
3GPP Rel 6	HSUPA Subtest-4	20.77	20.93	20.84	21.00	20.49	20.39	20.45	20.50
3GPP Rel 6	HSUPA Subtest-5	21.62	21.83	21.65	23.00	21.27	21.31	21.19	22.50
3GPP Rel 7	HSPA+ (16QAM) Subtest-1	21.47	21.69	21.40	23.00	21.03	21.06	21.00	23.00



**<LTE Conducted Power>**

**General Note:**

1. Anritsu MT8820C base station simulator was used to setup the connection with EUT; the frequency band, channel bandwidth, RB allocation configuration, modulation type are set in the base station simulator to configure EUT transmitting at maximum power and at different configurations which are requested to be reported to FCC, for conducted power measurement and SAR testing.
2. Per KDB 941225 D05v02r05, when a properly configured base station simulator is used for the SAR and power measurements, spectrum plots for each RB allocation and offset configuration is not required.
3. Per KDB 941225 D05v02r05, start with the largest channel bandwidth and measure SAR for QPSK with 1 RB allocation, using the RB offset and required test channel combination with the highest maximum output power for RB offsets at the upper edge, middle and lower edge of each required test channel.
4. Per KDB 941225 D05v02r05, 50% RB allocation for QPSK SAR testing follows 1RB QPSK allocation procedure.
5. Per KDB 941225 D05v02r05, For QPSK with 100% RB allocation, SAR is not required when the highest maximum output power for 100 % RB allocation is less than the highest maximum output power in 50% and 1 RB allocations and the highest reported SAR for 1 RB and 50% RB allocation are  $\leq 0.8$  W/kg. Otherwise, SAR is measured for the highest output power channel; and if the reported SAR is  $> 1.45$  W/kg, the remaining required test channels must also be tested.
6. Per KDB 941225 D05v02r05, 16QAM output power for each RB allocation configuration is  $>$  not  $\frac{1}{2}$  dB higher than the same configuration in QPSK and the reported SAR for the QPSK configuration is  $\leq 1.45$  W/kg; Per KDB 941225 D05v02r05, 16QAM SAR testing is not required.
7. Per KDB 941225 D05v02r05, Smaller bandwidth output power for each RB allocation configuration is  $>$  not  $\frac{1}{2}$  dB higher than the same configuration in the largest supported bandwidth, and the reported SAR for the largest supported bandwidth is  $\leq 1.45$  W/kg; Per KDB 941225 D05v02r05, smaller bandwidth SAR testing is not required.
8. For LTE B12 / B4 / B38 the maximum bandwidth does not support three non-overlapping channels, per KDB 941225 D05v02r05, when a device supports overlapping channel assignment in a channel bandwidth configuration, the middle channel of the group of overlapping channels should be selected for testing.
9. LTE band 17 SAR test was covered by Band 12; according to April 2015 TCB workshop, SAR test for overlapping LTE bands can be reduced if
  - a. the maximum output power, including tolerance, for the smaller band is  $\leq$  the larger band to qualify for the SAR test exclusion
  - b. the channel bandwidth and other operating parameters for the smaller band are fully supported by the larger band



**Default Power Mode**

**<LTE Band 2>**

BW [MHz]	Modulation	RB Size	RB Offset	Power Low Ch. / Freq.	Power Middle Ch. / Freq.	Power High Ch. / Freq.	Tune-up limit (dBm)	MPR (dB)
Channel				18700	18900	19100		
Frequency (MHz)				1860	1880	1900		
20	QPSK	1	0	23.05	23.20	23.70	24	0
20	QPSK	1	49	23.48	23.61	23.85		
20	QPSK	1	99	23.19	23.57	23.49		
20	QPSK	50	0	22.35	22.44	22.64	23	1
20	QPSK	50	24	22.37	22.53	22.64		
20	QPSK	50	50	22.20	22.56	22.79		
20	QPSK	100	0	22.30	22.47	22.81	23	1
20	16QAM	1	0	21.43	21.90	22.27		
20	16QAM	1	49	22.11	21.91	21.88		
20	16QAM	1	99	21.72	22.10	22.26	22	2
20	16QAM	50	0	21.41	21.29	21.66		
20	16QAM	50	24	21.45	21.54	21.71		
20	16QAM	50	50	21.29	21.62	21.81	22	2
20	16QAM	100	0	21.36	21.45	21.68		
Channel				18675	18900	19125		
Frequency (MHz)				1857.5	1880	1902.5		
15	QPSK	1	0	23.01	23.26	23.74	24	0
15	QPSK	1	37	23.58	23.55	23.84		
15	QPSK	1	74	23.17	23.50	23.83		
15	QPSK	36	0	22.34	22.42	22.79	23	1
15	QPSK	36	20	22.44	22.50	22.85		
15	QPSK	36	39	22.38	22.52	22.89		
15	QPSK	75	0	22.41	22.52	22.88	23	1
15	16QAM	1	0	21.85	21.97	22.33		
15	16QAM	1	37	22.85	22.19	22.69		
15	16QAM	1	74	21.79	22.05	22.41	22	2
15	16QAM	36	0	21.28	21.39	21.72		
15	16QAM	36	20	21.36	21.58	21.88		
15	16QAM	36	39	21.33	21.49	21.99	22	2
15	16QAM	75	0	21.42	21.51	21.93		
Channel				18650	18900	19150		
Frequency (MHz)				1855	1880	1905		
10	QPSK	1	0	23.03	23.40	23.67	24	0
10	QPSK	1	25	23.36	23.51	23.83		
10	QPSK	1	49	23.20	23.23	23.72		
10	QPSK	25	0	22.22	22.42	22.81	23	1
10	QPSK	25	12	22.45	22.52	22.96		
10	QPSK	25	25	22.36	22.50	22.90		
10	QPSK	50	0	22.37	22.49	22.90	23	1
10	16QAM	1	0	21.83	22.00	22.42		
10	16QAM	1	25	22.70	22.02	23.00		
10	16QAM	1	49	21.93	22.25	22.51	22	2
10	16QAM	25	0	21.31	21.52	21.85		
10	16QAM	25	12	21.45	21.51	22.00		
10	16QAM	25	25	21.33	21.32	21.94	22	2
10	16QAM	50	0	21.30	21.45	21.84		



Channel				18625	18900	19175	Tune-up limit (dBm)	MPR (dB)
Frequency (MHz)				1852.5	1880	1907.5		
5	QPSK	1	0	22.96	23.10	23.52	24	0
5	QPSK	1	12	23.24	23.43	23.84		
5	QPSK	1	24	23.26	23.24	23.80		
5	QPSK	12	0	22.15	22.41	22.79	23	1
5	QPSK	12	7	22.29	22.51	22.94		
5	QPSK	12	13	22.34	22.45	22.90		
5	QPSK	25	0	22.25	22.49	22.88	23	1
5	16QAM	1	0	21.85	22.08	22.25		
5	16QAM	1	12	22.19	22.72	23.00		
5	16QAM	1	24	21.63	22.50	22.96	22	2
5	16QAM	12	0	20.99	21.23	21.96		
5	16QAM	12	7	21.35	21.62	21.83		
5	16QAM	12	13	21.42	21.29	21.86	22	2
5	16QAM	12	13	21.42	21.29	21.86		
5	16QAM	25	0	21.33	21.41	21.88		
Channel				18615	18900	19185	Tune-up limit (dBm)	MPR (dB)
Frequency (MHz)				1851.5	1880	1908.5		
3	QPSK	1	0	22.96	23.35	23.54	24	0
3	QPSK	1	8	22.98	23.35	23.75		
3	QPSK	1	14	23.04	23.33	23.58		
3	QPSK	8	0	22.17	22.46	22.87	23	1
3	QPSK	8	4	22.20	22.47	22.90		
3	QPSK	8	7	22.22	22.43	22.87		
3	QPSK	15	0	22.17	22.45	22.83	23	1
3	16QAM	1	0	21.79	21.75	22.46		
3	16QAM	1	8	22.08	21.80	22.64		
3	16QAM	1	14	21.79	22.04	22.48	22	2
3	16QAM	8	0	21.23	21.37	21.81		
3	16QAM	8	4	21.27	21.61	21.81		
3	16QAM	8	7	21.39	21.66	21.91	22	2
3	16QAM	8	7	21.39	21.66	21.91		
3	16QAM	15	0	21.25	21.45	21.95		
Channel				18607	18900	19193	Tune-up limit (dBm)	MPR (dB)
Frequency (MHz)				1850.7	1880	1909.3		
1.4	QPSK	1	0	23.03	23.32	23.74	24	0
1.4	QPSK	1	3	23.17	23.46	23.65		
1.4	QPSK	1	5	23.13	23.32	23.80		
1.4	QPSK	3	0	23.14	23.30	23.83		
1.4	QPSK	3	1	23.23	23.47	23.83		
1.4	QPSK	3	3	23.32	23.55	23.80		
1.4	QPSK	6	0	22.26	22.42	22.85	23	1
1.4	16QAM	1	0	22.41	22.63	22.45	23	1
1.4	16QAM	1	3	22.50	22.70	22.62		
1.4	16QAM	1	5	22.37	22.55	22.46		
1.4	16QAM	3	0	22.09	22.49	22.46		
1.4	16QAM	3	1	22.28	22.67	22.70		
1.4	16QAM	3	3	22.17	22.75	22.51		
1.4	16QAM	6	0	21.19	21.33	21.67	22	2



<LTE Band 4>

BW [MHz]	Modulation	RB Size	RB Offset	Power Low Ch. / Freq.	Power Middle Ch. / Freq.	Power High Ch. / Freq.	Tune-up limit (dBm)	MPR (dB)
Channel				20050	20175	20300		
Frequency (MHz)				1720	1732.5	1745		
20	QPSK	1	0	23.69	23.89	23.81	24	0
20	QPSK	1	49	23.68	23.67	23.77		
20	QPSK	1	99	23.53	23.56	23.80		
20	QPSK	50	0	22.72	22.89	22.88	23	1
20	QPSK	50	24	22.71	22.75	22.88		
20	QPSK	50	50	22.64	22.78	22.87		
20	QPSK	100	0	22.69	22.93	22.92		
20	16QAM	1	0	22.42	22.90	22.91	23	1
20	16QAM	1	49	22.40	22.64	22.81		
20	16QAM	1	99	22.64	22.25	22.35		
20	16QAM	50	0	21.59	21.74	21.87	22	2
20	16QAM	50	24	21.65	21.75	21.80		
20	16QAM	50	50	21.64	21.96	21.91		
20	16QAM	100	0	21.55	21.77	21.85		
Channel				20025	20175	20325		
Frequency (MHz)				1717.5	1732.5	1747.5		
15	QPSK	1	0	23.65	23.44	23.82	24	0
15	QPSK	1	37	23.75	23.82	23.84		
15	QPSK	1	74	23.74	23.48	23.79		
15	QPSK	36	0	22.63	22.90	22.92	23	1
15	QPSK	36	20	22.73	22.84	22.93		
15	QPSK	36	39	22.71	22.78	23.00		
15	QPSK	75	0	22.71	22.78	22.98		
15	16QAM	1	0	22.27	22.22	22.54	23	1
15	16QAM	1	37	22.29	22.51	22.99		
15	16QAM	1	74	22.04	22.35	22.43		
15	16QAM	36	0	21.63	21.82	21.96	22	2
15	16QAM	36	20	21.82	21.84	21.89		
15	16QAM	36	39	21.78	21.79	21.91		
15	16QAM	75	0	21.70	21.83	21.85		
Channel				20000	20175	20350		
Frequency (MHz)				1715	1732.5	1750		
10	QPSK	1	0	23.56	23.66	23.79	24	0
10	QPSK	1	25	23.85	23.80	23.86		
10	QPSK	1	49	23.76	23.46	23.75		
10	QPSK	25	0	22.88	22.85	22.95	23	1
10	QPSK	25	12	22.79	22.87	22.96		
10	QPSK	25	25	22.70	22.76	23.00		
10	QPSK	50	0	22.72	22.87	22.98		
10	16QAM	1	0	22.36	22.41	22.48	23	1
10	16QAM	1	25	22.26	22.84	22.92		
10	16QAM	1	49	22.30	22.82	22.52		
10	16QAM	25	0	21.73	21.83	21.99	22	2
10	16QAM	25	12	21.70	21.85	21.96		
10	16QAM	25	25	21.79	21.94	21.93		
10	16QAM	50	0	21.63	21.94	21.98		



Channel				19975	20175	20375	Tune-up limit (dBm)	MPR (dB)
Frequency (MHz)				1712.5	1732.5	1752.5		
5	QPSK	1	0	23.53	23.68	23.79	24	0
5	QPSK	1	12	23.68	23.77	23.81		
5	QPSK	1	24	23.39	23.57	23.71		
5	QPSK	12	0	22.66	22.77	22.93	23	1
5	QPSK	12	7	22.70	22.86	22.91		
5	QPSK	12	13	22.68	22.77	22.91		
5	QPSK	25	0	22.69	22.83	22.96	23	1
5	16QAM	1	0	22.26	22.27	22.39		
5	16QAM	1	12	22.39	22.41	22.90		
5	16QAM	1	24	22.26	22.21	22.32	22	2
5	16QAM	12	0	21.49	21.62	21.99		
5	16QAM	12	7	21.53	21.84	21.94		
5	16QAM	12	13	21.53	21.72	21.90	22	2
5	16QAM	25	0	21.70	21.67	21.98		
5	16QAM	25	0	21.70	21.67	21.98		
Channel				19965	20175	20385	Tune-up limit (dBm)	MPR (dB)
Frequency (MHz)				1711.5	1732.5	1753.5		
3	QPSK	1	0	23.57	23.75	23.84	24	0
3	QPSK	1	8	23.54	23.75	23.87		
3	QPSK	1	14	23.56	23.75	23.77		
3	QPSK	8	0	22.63	22.85	22.79	23	1
3	QPSK	8	4	22.67	22.85	22.71		
3	QPSK	8	7	22.64	22.80	22.85		
3	QPSK	15	0	22.69	22.73	22.80	23	1
3	16QAM	1	0	22.39	22.42	22.54		
3	16QAM	1	8	21.91	22.13	22.67		
3	16QAM	1	14	22.02	22.12	21.98	22	2
3	16QAM	8	0	21.48	21.56	21.77		
3	16QAM	8	4	21.62	21.78	21.75		
3	16QAM	8	7	21.69	21.81	21.81	22	2
3	16QAM	8	7	21.69	21.81	21.81		
3	16QAM	15	0	21.65	21.81	21.59	22	2
Channel				19957	20175	20393	Tune-up limit (dBm)	MPR (dB)
Frequency (MHz)				1710.7	1732.5	1754.3		
1.4	QPSK	1	0	23.51	23.71	23.56	24	0
1.4	QPSK	1	3	23.49	23.79	23.87		
1.4	QPSK	1	5	23.44	23.72	23.87		
1.4	QPSK	3	0	23.63	23.86	23.85		
1.4	QPSK	3	1	23.85	23.88	23.83		
1.4	QPSK	3	3	23.73	23.84	23.82		
1.4	QPSK	6	0	22.67	22.86	22.81	23	1
1.4	16QAM	1	0	22.31	22.22	22.32	23	1
1.4	16QAM	1	3	22.23	22.49	22.34		
1.4	16QAM	1	5	21.93	22.19	22.27		
1.4	16QAM	3	0	22.34	22.43	22.81		
1.4	16QAM	3	1	22.56	22.66	22.97		
1.4	16QAM	3	3	22.53	22.66	22.87		
1.4	16QAM	6	0	21.62	21.52	21.69	22	2



<LTE Band 7>

BW [MHz]	Modulation	RB Size	RB Offset	Power Low Ch. / Freq.	Power Middle Ch. / Freq.	Power High Ch. / Freq.	Tune-up limit (dBm)	MPR (dB)
Channel				20850	21100	21350		
Frequency (MHz)				2510	2535	2560		
20	QPSK	1	0	23.36	23.34	23.16		
20	QPSK	1	49	23.35	23.24	23.13	24	0
20	QPSK	1	99	22.64	22.84	22.92		
20	QPSK	50	0	22.06	21.98	22.05		
20	QPSK	50	24	22.04	21.87	22.03	23	1
20	QPSK	50	50	22.02	21.97	22.00		
20	QPSK	100	0	22.05	21.90	22.04		
20	16QAM	1	0	21.68	21.86	22.02	23	1
20	16QAM	1	49	21.61	22.00	22.28		
20	16QAM	1	99	21.90	21.32	21.62		
20	16QAM	50	0	20.89	20.93	20.82	22	2
20	16QAM	50	24	21.00	20.87	21.20		
20	16QAM	50	50	20.99	21.09	21.07		
20	16QAM	100	0	20.99	20.94	21.10		
Channel				20825	21100	21375		
Frequency (MHz)				2507.5	2535	2562.5		
15	QPSK	1	0	23.12	22.89	22.83		
15	QPSK	1	37	23.27	22.87	23.10	24	0
15	QPSK	1	74	22.96	23.07	23.04		
15	QPSK	36	0	22.08	21.98	22.00		
15	QPSK	36	20	22.24	21.88	22.04	23	1
15	QPSK	36	39	22.13	22.03	22.08		
15	QPSK	75	0	22.04	21.90	22.02		
15	16QAM	1	0	21.72	21.66	21.68	23	1
15	16QAM	1	37	21.83	22.19	21.68		
15	16QAM	1	74	21.75	22.32	21.68		
15	16QAM	36	0	21.06	20.98	21.02	22	2
15	16QAM	36	20	21.07	20.84	21.06		
15	16QAM	36	39	21.04	21.00	21.00		
15	16QAM	75	0	21.06	21.02	21.06		
Channel				20800	21100	21400		
Frequency (MHz)				2505	2535	2565		
10	QPSK	1	0	23.05	22.81	22.97		
10	QPSK	1	25	23.22	23.09	23.12	24	0
10	QPSK	1	49	23.00	23.01	22.98		
10	QPSK	25	0	22.09	21.98	21.99		
10	QPSK	25	12	22.11	21.96	22.09	23	1
10	QPSK	25	25	22.12	21.95	22.05		
10	QPSK	50	0	22.07	21.93	21.98		
10	16QAM	1	0	21.95	21.82	21.48	23	1
10	16QAM	1	25	22.46	22.19	22.03		
10	16QAM	1	49	21.57	21.53	21.70		
10	16QAM	25	0	21.02	21.02	21.05	22	2
10	16QAM	25	12	21.15	21.15	21.25		
10	16QAM	25	25	21.05	20.99	21.10		
10	16QAM	50	0	21.00	20.97	20.96		



Channel				20775	21100	21425	Tune-up limit (dBm)	MPR (dB)
Frequency (MHz)				2502.5	2535	2567.5		
5	QPSK	1	0	23.10	22.93	23.09	24	0
5	QPSK	1	12	23.14	23.25	23.29		
5	QPSK	1	24	22.97	23.01	23.04		
5	QPSK	12	0	22.06	21.91	21.97	23	1
5	QPSK	12	7	22.10	21.92	22.05		
5	QPSK	12	13	22.10	21.95	21.95		
5	QPSK	25	0	22.04	21.88	22.05		
5	16QAM	1	0	22.17	21.31	21.48	23	1
5	16QAM	1	12	21.82	21.75	21.46		
5	16QAM	1	24	21.54	21.20	21.28		
5	16QAM	12	0	20.90	20.82	20.93	22	2
5	16QAM	12	7	21.07	20.94	21.18		
5	16QAM	12	13	21.14	20.82	21.06		
5	16QAM	25	0	21.07	20.89	21.12		





<LTE Band 12>

BW [MHz]	Modulation	RB Size	RB Offset	Power Low Ch. / Freq.	Power Middle Ch. / Freq.	Power High Ch. / Freq.	Tune-up limit (dBm)	MPR (dB)
Channel				23060	23095	23130		
Frequency (MHz)				704	707.5	711		
10	QPSK	1	0	23.50	23.34	23.63	24	0
10	QPSK	1	25	23.48	23.94	23.82		
10	QPSK	1	49	23.73	23.67	23.53		
10	QPSK	25	0	22.59	22.62	22.79	23	1
10	QPSK	25	12	22.62	22.88	22.62		
10	QPSK	25	25	22.87	22.81	22.59		
10	QPSK	50	0	22.72	22.79	22.78		
10	16QAM	1	0	22.87	22.03	22.04	23	1
10	16QAM	1	25	22.48	22.29	22.84		
10	16QAM	1	49	22.43	21.96	22.66		
10	16QAM	25	0	21.49	21.55	21.67	22	2
10	16QAM	25	12	21.49	21.92	21.49		
10	16QAM	25	25	21.79	21.67	21.58		
10	16QAM	50	0	21.63	21.74	21.77		
Channel				23035	23095	23155	Tune-up limit (dBm)	MPR (dB)
Frequency (MHz)				701.5	707.5	713.5		
5	QPSK	1	0	23.47	23.29	23.24	24	0
5	QPSK	1	12	23.75	23.93	23.65		
5	QPSK	1	24	23.40	23.81	23.51		
5	QPSK	12	0	22.68	22.64	22.51	23	1
5	QPSK	12	7	22.70	22.72	22.57		
5	QPSK	12	13	22.57	22.76	22.53		
5	QPSK	25	0	22.71	22.71	22.58		
5	16QAM	1	0	22.32	22.16	22.51	23	1
5	16QAM	1	12	22.33	22.98	22.22		
5	16QAM	1	24	22.12	22.68	22.09		
5	16QAM	12	0	21.74	21.36	21.38	22	2
5	16QAM	12	7	21.45	21.68	21.28		
5	16QAM	12	13	21.40	21.65	21.29		
5	16QAM	25	0	21.64	21.72	21.57		
Channel				23025	23095	23165	Tune-up limit (dBm)	MPR (dB)
Frequency (MHz)				700.5	707.5	714.5		
3	QPSK	1	0	23.52	23.57	23.40	24	0
3	QPSK	1	8	23.29	23.73	23.35		
3	QPSK	1	14	23.45	23.76	23.58		
3	QPSK	8	0	22.68	22.72	22.63	23	1
3	QPSK	8	4	22.55	22.68	22.62		
3	QPSK	8	7	22.61	22.68	22.63		
3	QPSK	15	0	22.70	22.72	22.55		
3	16QAM	1	0	22.25	22.45	22.56	23	1
3	16QAM	1	8	22.00	22.85	22.64		
3	16QAM	1	14	22.03	22.67	22.40		
3	16QAM	8	0	21.71	21.42	21.55	22	2
3	16QAM	8	4	21.49	21.79	21.69		
3	16QAM	8	7	21.60	21.77	21.74		
3	16QAM	15	0	21.55	21.42	21.61		



Channel				23017	23095	23173	Tune-up limit (dBm)	MPR (dB)
Frequency (MHz)				699.7	707.5	715.3		
1.4	QPSK	1	0	23.60	23.41	23.25	24	0
1.4	QPSK	1	3	23.60	23.63	23.70		
1.4	QPSK	1	5	23.65	23.48	23.69		
1.4	QPSK	3	0	23.76	23.76	23.61		
1.4	QPSK	3	1	23.66	23.92	23.73		
1.4	QPSK	3	3	23.78	23.81	23.76		
1.4	QPSK	6	0	22.67	22.74	22.50	23	1
1.4	16QAM	1	0	22.20	22.80	22.61	23	1
1.4	16QAM	1	3	22.32	22.94	22.95		
1.4	16QAM	1	5	22.21	22.79	22.84		
1.4	16QAM	3	0	22.36	22.63	22.41		
1.4	16QAM	3	1	22.25	22.78	22.49		
1.4	16QAM	3	3	22.52	22.80	22.80		
1.4	16QAM	6	0	21.41	21.45	21.37	22	2



<LTE Band 17>

BW [MHz]	Modulation	RB Size	RB Offset	Power Low Ch. / Freq.	Power Middle Ch. / Freq.	Power High Ch. / Freq.	Tune-up limit (dBm)	MPR (dB)
Channel				23780	23790	23800		
Frequency (MHz)				709	710	711		
10	QPSK	1	0	23.54	23.42	23.44	24	0
10	QPSK	1	25	23.85	24.00	23.79		
10	QPSK	1	49	23.50	23.33	23.33		
10	QPSK	25	0	22.88	22.89	22.75	23	1
10	QPSK	25	12	22.88	22.90	22.80		
10	QPSK	25	25	22.80	22.66	22.67		
10	QPSK	50	0	22.81	22.85	22.78	23	1
10	16QAM	1	0	22.49	22.04	22.47		
10	16QAM	1	25	22.97	22.66	22.45		
10	16QAM	1	49	22.31	22.21	21.99	22	2
10	16QAM	25	0	21.87	21.83	21.70		
10	16QAM	25	12	21.77	21.81	21.76		
10	16QAM	25	25	21.83	21.61	21.75	22	2
10	16QAM	25	25	21.83	21.61	21.75		
10	16QAM	50	0	21.92	21.69	21.86		
Channel				23755	23790	23825		
Frequency (MHz)				706.5	710	713.5		
5	QPSK	1	0	23.45	23.55	23.59	24	0
5	QPSK	1	12	23.93	23.77	23.49		
5	QPSK	1	24	23.53	23.47	23.38		
5	QPSK	12	0	22.79	22.73	22.55	23	1
5	QPSK	12	7	22.92	22.76	22.59		
5	QPSK	12	13	22.89	22.80	22.55		
5	QPSK	25	0	22.86	22.71	22.59	23	1
5	16QAM	1	0	22.17	22.13	22.11		
5	16QAM	1	12	22.98	22.36	22.30		
5	16QAM	1	24	22.19	22.22	21.98	22	2
5	16QAM	12	0	21.64	21.73	21.63		
5	16QAM	12	7	21.94	21.56	21.40		
5	16QAM	12	13	21.88	21.63	21.32	22	2
5	16QAM	12	13	21.88	21.63	21.32		
5	16QAM	25	0	21.93	21.71	21.58		



**Reduced Power Mode**

**<LTE Band 2>**

BW [MHz]	Modulation	RB Size	RB Offset	Power Low Ch. / Freq.	Power Middle Ch. / Freq.	Power High Ch. / Freq.	Tune-up limit (dBm)	MPR (dB)
Channel				18700	18900	19100		
Frequency (MHz)				1860	1880	1900		
20	QPSK	1	0	22.57	22.59	22.83	23	0
20	QPSK	1	49	22.93	22.98	22.87		
20	QPSK	1	99	22.46	22.96	22.54		
20	QPSK	50	0	21.72	21.86	21.82	22	1
20	QPSK	50	24	21.91	21.92	21.84		
20	QPSK	50	50	21.71	21.90	21.64		
20	QPSK	100	0	21.81	21.88	21.82		
20	16QAM	1	0	21.40	21.53	21.96	22	1
20	16QAM	1	49	21.63	21.92	21.75		
20	16QAM	1	99	21.28	22.00	21.34		
20	16QAM	50	0	20.80	20.94	20.81	21	2
20	16QAM	50	24	20.98	20.95	20.93		
20	16QAM	50	50	20.81	20.95	20.72		
20	16QAM	100	0	20.82	20.94	20.74		
Channel				18675	18900	19125	Tune-up limit (dBm)	MPR (dB)
Frequency (MHz)				1857.5	1880	1902.5		
15	QPSK	1	0	22.86	22.84	22.86	23	0
15	QPSK	1	37	22.92	22.97	22.76		
15	QPSK	1	74	22.78	22.82	22.87		
15	QPSK	36	0	21.79	21.83	21.86	22	1
15	QPSK	36	20	21.92	21.91	21.85		
15	QPSK	36	39	21.90	21.91	21.83		
15	QPSK	75	0	21.88	21.88	21.80		
15	16QAM	1	0	21.41	21.36	21.37	22	1
15	16QAM	1	37	21.72	21.81	21.52		
15	16QAM	1	74	21.31	21.34	21.31		
15	16QAM	36	0	20.96	20.98	20.85	21	2
15	16QAM	36	20	20.94	20.95	20.84		
15	16QAM	36	39	20.91	20.91	20.69		
15	16QAM	75	0	20.93	20.95	20.89		
Channel				18650	18900	19150	Tune-up limit (dBm)	MPR (dB)
Frequency (MHz)				1855	1880	1905		
10	QPSK	1	0	22.68	22.73	22.76	23	0
10	QPSK	1	25	22.85	22.92	22.97		
10	QPSK	1	49	22.63	22.91	22.92		
10	QPSK	25	0	21.70	21.82	21.81	22	1
10	QPSK	25	12	21.84	21.97	21.88		
10	QPSK	25	25	21.88	21.87	21.78		
10	QPSK	50	0	21.79	21.89	21.81		
10	16QAM	1	0	21.33	21.29	21.33	22	1
10	16QAM	1	25	21.74	21.47	21.41		
10	16QAM	1	49	21.61	21.43	21.30		
10	16QAM	25	0	20.96	20.90	20.83	21	2
10	16QAM	25	12	20.90	20.95	20.88		
10	16QAM	25	25	20.97	20.93	20.82		
10	16QAM	50	0	20.87	20.96	20.77		



Channel				18625	18900	19175	Tune-up limit (dBm)	MPR (dB)
Frequency (MHz)				1852.5	1880	1907.5		
5	QPSK	1	0	22.51	22.62	22.53	23	0
5	QPSK	1	12	22.83	22.94	22.80		
5	QPSK	1	24	22.82	22.86	22.68		
5	QPSK	12	0	21.64	21.84	21.70	22	1
5	QPSK	12	7	21.77	21.97	21.79		
5	QPSK	12	13	21.66	21.86	21.74		
5	QPSK	25	0	21.63	21.83	21.73		
5	16QAM	1	0	21.27	21.28	21.30	22	1
5	16QAM	1	12	21.52	21.87	21.44		
5	16QAM	1	24	21.15	21.07	21.09		
5	16QAM	12	0	20.63	20.66	20.47	21	2
5	16QAM	12	7	20.84	20.96	20.90		
5	16QAM	12	13	20.91	20.96	20.72		
5	16QAM	25	0	20.98	20.91	20.89		
Channel				18615	18900	19185	Tune-up limit (dBm)	MPR (dB)
Frequency (MHz)				1851.5	1880	1908.5		
3	QPSK	1	0	22.78	22.95	22.59	23	0
3	QPSK	1	8	22.83	22.97	22.66		
3	QPSK	1	14	22.81	22.94	22.62		
3	QPSK	8	0	21.65	21.85	21.89	22	1
3	QPSK	8	4	21.69	21.90	21.82		
3	QPSK	8	7	21.70	21.84	21.85		
3	QPSK	15	0	21.72	21.86	21.84		
3	16QAM	1	0	21.53	21.25	21.64	22	1
3	16QAM	1	8	21.11	21.16	21.87		
3	16QAM	1	14	21.30	21.42	21.86		
3	16QAM	8	0	20.73	20.77	20.88	21	2
3	16QAM	8	4	20.96	20.93	20.97		
3	16QAM	8	7	20.97	20.95	20.99		
3	16QAM	15	0	20.97	20.98	20.92		
Channel				18607	18900	19193	Tune-up limit (dBm)	MPR (dB)
Frequency (MHz)				1850.7	1880	1909.3		
1.4	QPSK	1	0	22.52	22.78	22.71	23	0
1.4	QPSK	1	3	22.74	22.96	22.81		
1.4	QPSK	1	5	22.78	22.87	22.73		
1.4	QPSK	3	0	22.89	22.84	22.80		
1.4	QPSK	3	1	22.97	22.96	22.91		
1.4	QPSK	3	3	22.79	22.95	22.80		
1.4	QPSK	6	0	21.67	21.84	21.82	22	1
1.4	16QAM	1	0	21.84	21.31	21.28	22	1
1.4	16QAM	1	3	21.93	21.53	21.70		
1.4	16QAM	1	5	21.80	21.25	21.57		
1.4	16QAM	3	0	21.60	21.65	21.46		
1.4	16QAM	3	1	21.81	21.84	21.77		
1.4	16QAM	3	3	21.83	21.79	21.67		
1.4	16QAM	6	0	20.77	20.80	20.75	21	2



<LTE Band 4>

BW [MHz]	Modulation	RB Size	RB Offset	Power Low Ch. / Freq.	Power Middle Ch. / Freq.	Power High Ch. / Freq.	Tune-up limit (dBm)	MPR (dB)
Channel				20050	20175	20300		
Frequency (MHz)				1720	1732.5	1745		
20	QPSK	1	0	21.73	21.76	22.09	22.5	0
20	QPSK	1	49	22.08	22.29	22.21		
20	QPSK	1	99	21.85	21.74	21.83		
20	QPSK	50	0	21.11	21.24	21.20	21.5	1
20	QPSK	50	24	21.10	21.13	21.18		
20	QPSK	50	50	21.09	21.13	21.17		
20	QPSK	100	0	21.10	21.22	21.16		
20	16QAM	1	0	20.68	20.73	20.61	21.5	1
20	16QAM	1	49	21.27	20.85	21.07		
20	16QAM	1	99	21.17	20.74	20.62		
20	16QAM	50	0	20.08	20.14	20.27	20.5	2
20	16QAM	50	24	20.16	20.15	20.16		
20	16QAM	50	50	20.07	20.14	20.20		
20	16QAM	100	0	20.04	20.18	20.18		
Channel				20025	20175	20325	Tune-up limit (dBm)	MPR (dB)
Frequency (MHz)				1717.5	1732.5	1747.5		
15	QPSK	1	0	21.68	22.02	22.12	22.5	0
15	QPSK	1	37	22.14	22.13	22.13		
15	QPSK	1	74	21.94	21.93	22.03		
15	QPSK	36	0	21.03	21.20	21.34	21.5	1
15	QPSK	36	20	21.06	21.11	21.20		
15	QPSK	36	39	21.03	21.14	21.16		
15	QPSK	75	0	21.07	21.12	21.33		
15	16QAM	1	0	20.57	20.56	20.91	21.5	1
15	16QAM	1	37	20.51	21.29	20.63		
15	16QAM	1	74	20.54	21.14	20.52		
15	16QAM	36	0	20.02	20.13	20.23	20.5	2
15	16QAM	36	20	19.94	20.15	20.20		
15	16QAM	36	39	20.04	20.10	20.13		
15	16QAM	75	0	20.09	20.15	20.27		
Channel				20000	20175	20350	Tune-up limit (dBm)	MPR (dB)
Frequency (MHz)				1715	1732.5	1750		
10	QPSK	1	0	21.79	21.78	21.95	22.5	0
10	QPSK	1	25	21.89	22.17	22.28		
10	QPSK	1	49	21.82	21.70	21.89		
10	QPSK	25	0	21.04	21.17	21.36	21.5	1
10	QPSK	25	12	21.10	21.15	21.22		
10	QPSK	25	25	21.10	21.14	21.24		
10	QPSK	50	0	21.09	21.17	21.26		
10	16QAM	1	0	20.58	20.59	20.77	21.5	1
10	16QAM	1	25	20.67	21.31	21.18		
10	16QAM	1	49	20.54	20.54	20.75		
10	16QAM	25	0	20.03	20.19	20.33	20.5	2
10	16QAM	25	12	20.18	20.12	20.15		
10	16QAM	25	25	20.09	20.11	19.97		
10	16QAM	50	0	20.17	20.13	20.29		



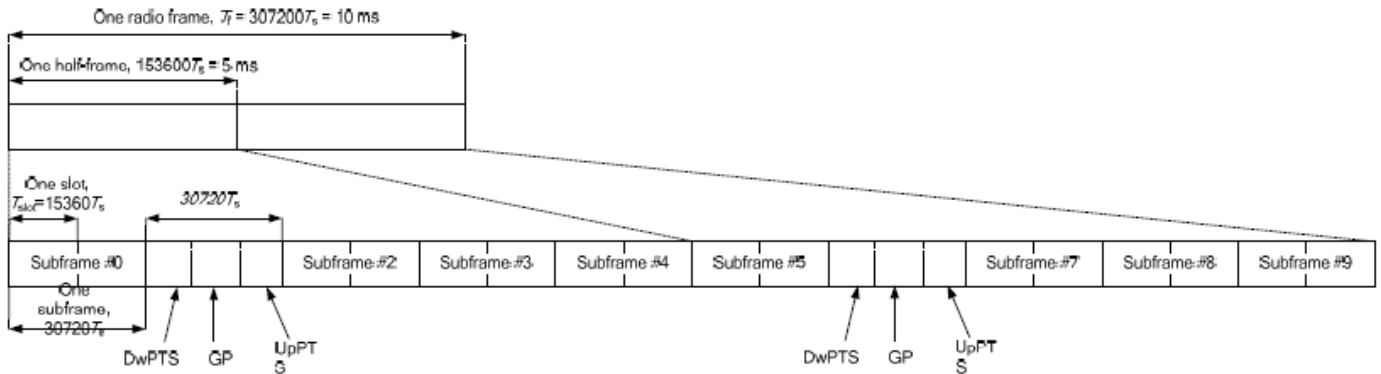
Channel				19975	20175	20375	Tune-up limit (dBm)	MPR (dB)
Frequency (MHz)				1712.5	1732.5	1752.5		
5	QPSK	1	0	21.83	21.92	22.00	22.5	0
5	QPSK	1	12	21.75	22.05	21.87		
5	QPSK	1	24	21.87	21.93	21.82		
5	QPSK	12	0	21.01	21.09	21.29	21.5	1
5	QPSK	12	7	21.04	21.14	21.24		
5	QPSK	12	13	20.95	21.06	21.21		
5	QPSK	25	0	21.00	21.08	21.30		
5	16QAM	1	0	20.88	20.48	20.37	21.5	1
5	16QAM	1	12	20.58	20.75	20.59		
5	16QAM	1	24	20.35	20.50	20.47		
5	16QAM	12	0	19.89	19.95	20.06	20.5	2
5	16QAM	12	7	20.05	20.20	20.10		
5	16QAM	12	13	19.86	20.12	20.10		
5	16QAM	25	0	20.09	20.05	20.35		
Channel				19965	20175	20385	Tune-up limit (dBm)	MPR (dB)
Frequency (MHz)				1711.5	1732.5	1753.5		
3	QPSK	1	0	21.77	22.10	21.86	22.5	0
3	QPSK	1	8	21.82	21.94	21.96		
3	QPSK	1	14	21.85	22.07	21.83		
3	QPSK	8	0	21.07	21.15	21.10	21.5	1
3	QPSK	8	4	21.10	21.18	21.09		
3	QPSK	8	7	21.05	21.23	21.08		
3	QPSK	15	0	20.97	21.15	21.07		
3	16QAM	1	0	21.14	21.18	20.44	21.5	1
3	16QAM	1	8	21.03	20.66	20.67		
3	16QAM	1	14	20.88	21.04	20.89		
3	16QAM	8	0	19.89	19.86	20.17	20.5	2
3	16QAM	8	4	20.05	20.20	20.19		
3	16QAM	8	7	20.09	20.23	20.16		
3	16QAM	15	0	19.98	20.23	20.18		
Channel				19957	20175	20393	Tune-up limit (dBm)	MPR (dB)
Frequency (MHz)				1710.7	1732.5	1754.3		
1.4	QPSK	1	0	21.91	21.91	21.94	22.5	0
1.4	QPSK	1	3	21.94	21.83	21.99		
1.4	QPSK	1	5	21.98	22.04	21.84		
1.4	QPSK	3	0	22.12	22.08	22.16		
1.4	QPSK	3	1	22.04	22.25	22.24		
1.4	QPSK	3	3	22.07	22.08	22.19		
1.4	QPSK	6	0	20.99	21.03	21.18	21.5	1
1.4	16QAM	1	0	20.65	21.27	20.67	21.5	1
1.4	16QAM	1	3	20.82	21.42	20.77		
1.4	16QAM	1	5	20.60	21.26	20.59		
1.4	16QAM	3	0	20.77	21.07	21.08		
1.4	16QAM	3	1	21.00	21.03	21.08		
1.4	16QAM	3	3	20.84	20.96	21.05		
1.4	16QAM	6	0	19.87	20.16	20.25		

**<TDD LTE SAR Measurement>**

TDD LTE configuration setup for SAR measurement

SAR was tested with a fixed periodic duty factor according to the highest transmission duty factor implemented for the device and supported by 3GPP.

- a. 3GPP TS 36.211 section 4.2 for Type 2 Frame Structure and Table 4.2-2 for uplink-downlink configurations
- b. "special subframe S" contains both uplink and downlink transmissions, it has been taken into consideration to determine the transmission duty factor according to the worst case uplink and downlink cyclic prefix requirements for UpPTS
- c. Establishing connections with base station simulators ensure a consistent means for testing SAR and recommended for evaluating SAR. The Anritsu MT8820C (firmware: #22.52#004) was used for LTE output power measurements and SAR testing.



**Figure 4.2-1: Frame structure type 2 (for 5 ms switch-point periodicity).**

**Table 4.2-2: Uplink-downlink configurations.**

Uplink-downlink configuration	Downlink-to-Uplink Switch-point periodicity	Subframe number									
		0	1	2	3	4	5	6	7	8	9
0	5 ms	D	S	U	U	U	D	S	U	U	U
1	5 ms	D	S	U	U	D	D	S	U	U	D
2	5 ms	D	S	U	D	D	D	S	U	D	D
3	10 ms	D	S	U	U	U	D	D	D	D	D
4	10 ms	D	S	U	U	D	D	D	D	D	D
5	10 ms	D	S	U	D	D	D	D	D	D	D
6	5 ms	D	S	U	U	U	D	S	U	U	D

**Table 4.2-1: Configuration of special subframe (lengths of DwPTS/GP/UpPTS).**

Special subframe configuration	Normal cyclic prefix in downlink			Extended cyclic prefix in downlink		
	DwPTS	UpPTS		DwPTS	UpPTS	
		Normal cyclic prefix in uplink	Extended cyclic prefix in uplink		Normal cyclic prefix in uplink	Extended cyclic prefix in uplink
0	6592 · Ts	2192 · Ts	2560 · Ts	7680 · Ts	2192 · Ts	2560 · Ts
1	19760 · Ts			20480 · Ts		
2	21952 · Ts			23040 · Ts		
3	24144 · Ts			25600 · Ts		
4	26336 · Ts	4384 · Ts	5120 · Ts	7680 · Ts	4384 · Ts	5120 · Ts
5	6592 · Ts			20480 · Ts		
6	19760 · Ts			23040 · Ts		
7	21952 · Ts			12800 · Ts		
8	24144 · Ts	-	-	-	-	-
9	13168 · Ts	-	-	-	-	-



<b>Special subframe (30720·T<sub>s</sub>): Normal cyclic prefix in downlink (UpPTS)</b>			
	<b>Special subframe configuration</b>	<b>Normal cyclic prefix in uplink</b>	<b>Extended cyclic prefix in uplink</b>
<b>Uplink duty factor in one special subframe</b>	<b>0~4</b>	7.13%	8.33%
	<b>5~9</b>	14.3%	16.7%

<b>Special subframe(30720·T<sub>s</sub>): Extended cyclic prefix in downlink (UpPTS)</b>			
	<b>Special subframe configuration</b>	<b>Normal cyclic prefix in uplink</b>	<b>Extended cyclic prefix in uplink</b>
<b>Uplink duty factor in one special subframe</b>	<b>0~3</b>	7.13%	8.33%
	<b>4~7</b>	14.3%	16.7%

The highest duty factor is resulted from:

- i. Uplink-downlink configuration: 0. In a half-frame consisted of 5 subframes, uplink operation is in 3 uplink subframes and 1 special subframe.
- ii. special subframe configuration: 5-9 for normal cyclic prefix in downlink, 4-7 for extended cyclic prefix in downlink
- iii. for special subframe with extended cyclic prefix in uplink, the total uplink duty factor in one half-frame is:  $(3+0.167)/5 = 63.3\%$
- iv. for special subframe with normal cyclic prefix in uplink, the total uplink duty factor in one half-frame is:  $(3+0.143)/5 = 62.9\%$
- v. For TDD LTE SAR measurement, the duty cycle 1:1.59 (62.9 %) was used perform testing and considering the theoretical duty cycle of 63.3% for extended cyclic prefix in the uplink, and the theoretical duty cycle of 62.9% for normal cyclic prefix in uplink, a scaling factor of extended cyclic prefix  $63.3\%/62.9\% = 1.006$  is applied to scale-up the measured SAR result. The scaled TDD LTE SAR = measured SAR (W/kg)\* Tune-up Scaling Factor\* scaling factor for extended cyclic prefix.



<LTE Band 38>

BW [MHz]	Modulation	RB Size	RB Offset	Power Low Ch. / Freq.	Power Middle Ch. / Freq.	Power High Ch. / Freq.	Tune-up limit (dBm)	MPR (dB)
Channel				37850	38000	38150		
Frequency (MHz)				2580	2595	2610		
20	QPSK	1	0	23.48	23.50	23.26		
20	QPSK	1	49	23.43	23.20	23.25	24	0
20	QPSK	1	99	23.01	23.06	23.02		
20	QPSK	50	0	22.43	22.68	22.17		
20	QPSK	50	24	22.42	22.67	22.16	23	1
20	QPSK	50	50	22.31	22.35	22.13		
20	QPSK	100	0	22.38	22.55	22.18		
20	16QAM	1	0	22.01	21.99	21.85	23	1
20	16QAM	1	49	22.20	22.51	21.95		
20	16QAM	1	99	21.74	21.64	21.65		
20	16QAM	50	0	21.22	21.59	21.40	22	2
20	16QAM	50	24	21.17	21.57	21.25		
20	16QAM	50	50	21.16	21.40	21.23		
20	16QAM	100	0	21.35	21.48	21.16		
Channel				37825	38000	38175		
Frequency (MHz)				2577.5	2595	2612.5		
15	QPSK	1	0	23.44	22.94	23.04		
15	QPSK	1	37	23.45	23.46	23.32	24	0
15	QPSK	1	74	23.24	23.30	22.93		
15	QPSK	36	0	22.53	22.34	22.24		
15	QPSK	36	20	22.32	22.30	22.12	23	1
15	QPSK	36	39	22.37	22.25	22.01		
15	QPSK	75	0	22.39	22.33	22.30		
15	16QAM	1	0	22.35	21.82	21.72	23	1
15	16QAM	1	37	22.42	22.16	21.86		
15	16QAM	1	74	22.09	22.11	21.56		
15	16QAM	36	0	21.39	21.41	21.09	22	2
15	16QAM	36	20	21.24	21.57	21.15		
15	16QAM	36	39	21.28	21.36	21.16		
15	16QAM	75	0	21.50	21.57	21.42		
Channel				37800	38000	38200		
Frequency (MHz)				2575	2595	2615		
10	QPSK	1	0	23.45	23.00	22.98		
10	QPSK	1	25	23.46	23.20	23.32	24	0
10	QPSK	1	49	23.29	23.07	23.02		
10	QPSK	25	0	22.45	22.18	22.21		
10	QPSK	25	12	22.26	22.28	22.17	23	1
10	QPSK	25	25	22.42	22.13	22.08		
10	QPSK	50	0	22.44	22.21	22.25		
10	16QAM	1	0	22.30	21.76	21.76	23	1
10	16QAM	1	25	22.33	21.95	21.86		
10	16QAM	1	49	22.14	21.66	21.50		
10	16QAM	25	0	21.40	21.31	20.99	22	2
10	16QAM	25	12	21.16	21.45	21.05		
10	16QAM	25	25	21.20	21.57	21.16		
10	16QAM	50	0	21.50	21.36	21.40		



Channel				37775	38000	38225	Tune-up limit (dBm)	MPR (dB)
Frequency (MHz)				2572.5	2595	2617.5		
5	QPSK	1	0	23.30	22.87	23.05	24	0
5	QPSK	1	12	23.34	23.18	23.24		
5	QPSK	1	24	23.16	23.04	22.85		
5	QPSK	12	0	22.47	22.11	22.16	23	1
5	QPSK	12	7	22.48	22.14	22.09		
5	QPSK	12	13	22.38	22.06	21.95		
5	QPSK	25	0	22.52	22.08	22.29		
5	16QAM	1	0	21.98	21.71	21.64	23	1
5	16QAM	1	12	22.22	22.21	21.82		
5	16QAM	1	24	22.26	21.73	21.59		
5	16QAM	12	0	21.32	21.04	21.10	22	2
5	16QAM	12	7	21.23	21.28	21.05		
5	16QAM	12	13	21.24	21.54	21.08		
5	16QAM	25	0	21.23	21.33	21.50		



**<WLAN Conducted Power>**

**General Note:**

1. Per KDB 248227 D01v02r02, SAR test reduction is determined according to 802.11 transmission mode configurations and certain exposure conditions with multiple test positions. In the 2.4 GHz band, separate SAR procedures are applied to DSSS and OFDM configurations to simplify DSSS test requirements. For OFDM, in both 2.4 and 5 GHz bands, an initial test configuration must be determined for each standalone and aggregated frequency band, according to the transmission mode configuration with the highest maximum output power specified for production units to perform SAR measurements. If the same highest maximum output power applies to different combinations of channel bandwidths, modulations and data rates, additional procedures are applied to determine which test configurations require SAR measurement. When applicable, an initial test position may be applied to reduce the number of SAR measurements required for next to the ear, UMPC mini-tablet or hotspot mode configurations with multiple test positions.
2. For 2.4 GHz 802.11b DSSS, either the initial test position procedure for multiple exposure test positions or the DSSS procedure for fixed exposure position is applied; these are mutually exclusive. For 2.4 GHz and 5 GHz OFDM configurations, the initial test configuration is applied to measure SAR using either the initial test position procedure for multiple exposure test position configurations or the initial test configuration procedures for fixed exposure test conditions. Based on the reported SAR of the measured configurations and maximum output power of the transmission mode configurations that are not included in the initial test configuration, the subsequent test configuration and initial test position procedures are applied to determine if SAR measurements are required for the remaining OFDM transmission configurations. In general, the number of test channels that require SAR measurement is minimized based on maximum output power measured for the test sample(s).
3. For OFDM transmission configurations in the 2.4 GHz and 5 GHz bands, When the same maximum power is specified for multiple transmission modes in a frequency band, the largest channel bandwidth, lowest order modulation, lowest data rate and lowest order 802.11a/g/n/ac mode is used for SAR measurement, on the highest measured output power channel for each frequency band.
4. DSSS and OFDM configurations are considered separately according to the required SAR procedures. SAR is measured in the initial test position using the 802.11 transmission mode configuration required by the DSSS procedure or initial test configuration and subsequent test configuration(s) according to the OFDM procedures.<sup>18</sup> The initial test position procedure is described in the following:
  - a. When the reported SAR of the initial test position is  $\leq 0.4$  W/kg, further SAR measurement is not required for the other test positions in that exposure configuration and 802.11 transmission mode combinations within the frequency band or aggregated band.
  - b. When the reported SAR of the test position is  $> 0.4$  W/kg, SAR is repeated for the 802.11 transmission mode configuration tested in the initial test position to measure the subsequent next closet/smallest test separation distance and maximum coupling test position on the highest maximum output power channel, until the report SAR is  $\leq 0.8$  W/kg or all required test position are tested.
  - c. For all positions/configurations, when the reported SAR is  $> 0.8$  W/kg, SAR is measured for these test positions/configurations on the subsequent next highest measured output power channel(s) until the reported SAR is  $\leq 1.2$  W/kg or all required channels are tested.



**Default Power Mode**

**<2.4GHz WLAN>**

	Mode	Channel	Frequency (MHz)	Average power (dBm)	Tune-Up Limit	Duty Cycle %
2.4GHz WLAN	802.11b 1Mbps	CH 1	2412	18.37	18.50	97.16
		CH 6	2437	18.07	18.50	
		CH 11	2462	18.13	18.50	
	802.11g 6Mbps	CH 1	2412	11.55	12.00	87.18
		CH 6	2437	11.52	12.00	
		CH 11	2462	11.64	12.00	
	802.11n-HT20 MCS0	CH 1	2412	10.55	11.00	85.71
		CH 6	2437	10.68	11.00	
		CH 11	2462	10.90	11.00	

**<5GHz WLAN>**

	Mode	Channel	Frequency (MHz)	Average power (dBm)	Tune-Up Limit	Duty Cycle %
5.2GHz WLAN	802.11a 6Mbps	CH 36	5180	14.39	14.50	87.26
		CH 40	5200	14.21	14.50	
		CH 44	5220	14.24	14.50	
		CH 48	5240	14.37	14.50	
	802.11n-HT20 MCS0	CH 36	5180	14.42	14.50	86.49
		CH 40	5200	14.35	14.50	
		CH 44	5220	14.29	14.50	
		CH 48	5240	14.29	14.50	
	802.11n-HT40 MCS0	CH 38	5190	14.23	14.50	86.49
		CH 46	5230	14.11	14.50	

	Mode	Channel	Frequency (MHz)	Average power (dBm)	Tune-Up Limit	Duty Cycle %
5.3GHz WLAN	802.11a 6Mbps	CH 52	5260	14.37	14.50	87.26
		CH 56	5280	14.21	14.50	
		CH 60	5300	14.29	14.50	
		CH 64	5320	14.38	14.50	
	802.11n-HT20 MCS0	CH 52	5260	14.18	14.50	86.49
		CH 56	5280	14.20	14.50	
		CH 60	5300	14.33	14.50	
		CH 64	5320	14.41	14.50	
	802.11n-HT40 MCS0	CH 54	5270	14.05	14.50	86.49
		CH 62	5310	14.21	14.50	



	Mode	Channel	Frequency (MHz)	Average power (dBm)	Tune-Up Limit	Duty Cycle %
5.5GHz WLAN	802.11a 6Mbps	CH 100	5500	14.35	14.50	87.26
		CH 116	5580	13.94	14.50	
		CH 124	5620	14.22	14.50	
		CH 132	5660	13.95	14.50	
		CH 140	5700	14.19	14.50	
		CH 144	5720	13.75	14.50	
	802.11n-HT20 MCS0	CH 100	5500	14.37	14.50	86.49
		CH 116	5580	14.06	14.50	
		CH 124	5620	14.11	14.50	
		CH 132	5660	13.92	14.50	
		CH 140	5700	14.35	14.50	
		CH 144	5720	13.83	14.50	
	802.11n-HT40 MCS0	CH 102	5510	14.17	14.50	86.49
		CH 110	5550	14.06	14.50	
		CH 126	5630	13.90	14.50	
CH 134		5670	13.94	14.50		
		CH 142	5710	14.02	14.50	

	Mode	Channel	Frequency (MHz)	Average power (dBm)	Tune-Up Limit	Duty Cycle %
5.8GHz WLAN	802.11a MCS0	CH 149	5745	14.29	14.50	87.26
		CH 157	5785	14.20	14.50	
		CH 165	5825	14.04	14.50	
	802.11n-HT20 MCS0	CH 149	5745	14.43	14.50	86.49
		CH 157	5785	14.34	14.50	
		CH 165	5825	14.07	14.50	
	802.11n-HT40 MCS0	CH 151	5755	14.34	14.50	86.49
		CH 159	5795	14.05	14.50	

**Reduced Power Mode**

**<2.4GHz WLAN>**

	Mode	Channel	Frequency (MHz)	Average power (dBm)	Tune-Up Limit	Duty Cycle %
2.4GHz WLAN	802.11b 1Mbps	CH 1	2412	13.88	14.00	97.16
		CH 6	2437	13.93	14.00	
		CH 11	2462	13.99	14.00	
	802.11g 6Mbps	CH 1	2412	11.55	12.00	87.18
		CH 6	2437	11.52	12.00	
		CH 11	2462	11.64	12.00	
	802.11n-HT20 MCS0	CH 1	2412	10.55	11.00	85.71
		CH 6	2437	10.68	11.00	
		CH 11	2462	10.90	11.00	

### 13. Bluetooth Exclusions Applied

Mode Band	Max Average power(dBm)	
	Bluetooth-BR/EDR	Bluetooth-LE
2.4GHz Bluetooth	8.0	1.0

**Note:**

- Per KDB 447498 D01v06, the 1-g and 10-g SAR test exclusion thresholds for 100 MHz to 6 GHz at *test separation distances* ≤ 50 mm are determined by:  

$$[(\text{max. power of channel, including tune-up tolerance, mW}) / (\text{min. test separation distance, mm})] \cdot [\sqrt{f(\text{GHz})}] \leq 3.0$$
 for 1-g SAR and ≤ 7.5 for 10-g extremity SAR
  - f(GHz) is the RF channel transmit frequency in GHz
  - Power and distance are rounded to the nearest mW and mm before calculation
  - The result is rounded to one decimal place for comparison

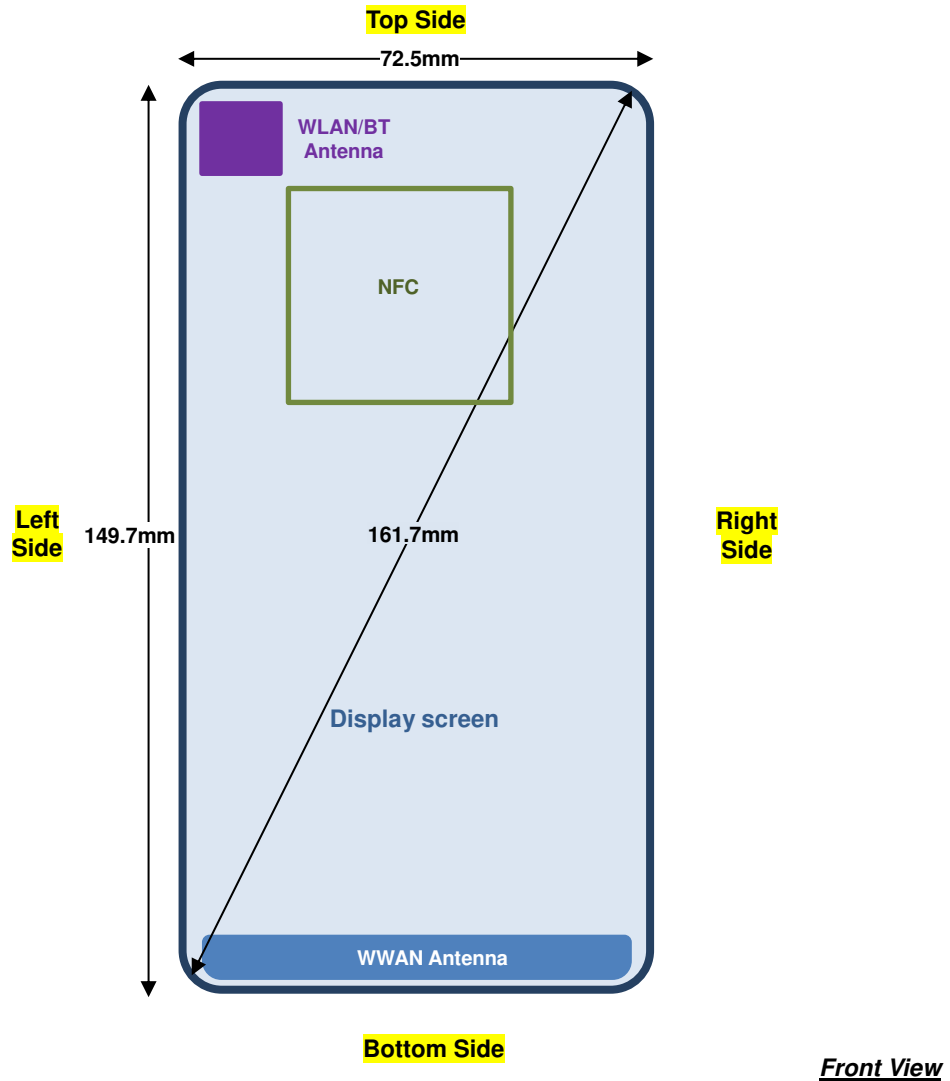
Bluetooth Max Power (dBm)	Separation Distance (mm)	Frequency (GHz)	exclusion thresholds
8	< 5	2.48	1.89

**Note:**

Per KDB 447498 D01v06, when the minimum test separation distance is < 5 mm, a distance of 5 mm is applied to determine SAR test exclusion. The test exclusion threshold is 1.89 which is ≤ 3, SAR testing is not required.

### 14. Antenna Location

<Mobile Phone>



Distance of the Antenna to the EUT surface/edge						
Antennas	Back	Front	Top Side	Bottom Side	Right Side	Left Side
WWAN Main	≤ 25mm	≤ 25mm	>25mm	≤ 25mm	≤ 25mm	≤ 25mm
BT&WLAN	≤ 25mm	≤ 25mm	≤ 25mm	>25mm	>25mm	≤ 25mm

Positions for SAR tests; Hotspot mode						
Antennas	Back	Front	Top Side	Bottom Side	Right Side	Left Side
WWAN Main	Yes	Yes	No	Yes	Yes	Yes
BT&WLAN	Yes	Yes	Yes	No	No	Yes

**General Note:**

- Referring to KDB 941225 D06 v02r01, when the overall device length and width are ≥ 9cm\*5cm, the test distance is 10 mm. SAR must be measured for all sides and surfaces with a transmitting antenna located within 25mm from that surface or edge





## 15. SAR Test Results

### General Note:

1. Per KDB 447498 D01v06, the reported SAR is the measured SAR value adjusted for maximum tune-up tolerance.
  - a. Tune-up scaling Factor = tune-up limit power (mW) / EUT RF power (mW), where tune-up limit is the maximum rated power among all production units.
  - b. For SAR testing of WLAN signal with non-100% duty cycle, the measured SAR is scaled-up by the duty cycle scaling factor which is equal to "1/(duty cycle)"
  - c. For WWAN: Reported SAR(W/kg)= Measured SAR(W/kg)\*Tune-up Scaling Factor
  - d. For WLAN: Reported SAR(W/kg)= Measured SAR(W/kg)\* Duty Cycle scaling factor \* Tune-up scaling factor
  - e. For TDD LTE SAR measurement, the duty cycle 1:1.59 (62.9 %) was used perform testing and considering the theoretical duty cycle of 63.3% for extended cyclic prefix in the uplink, and the theoretical duty cycle of 62.9% for normal cyclic prefix in uplink, a scaling factor of extended cyclic prefix 63.3%/62.9% = 1.006 is applied to scale-up the measured SAR result. The Reported TDD LTE SAR = measured SAR (W/kg) \* Tune-up Scaling Factor\* scaling factor for extended cyclic prefix.
2. Per KDB 447498 D01v06, for each exposure position, testing of other required channels within the operating mode of a frequency band is not required when the *reported* 1-g or 10-g SAR for the mid-band or highest output power channel is:
  - $\leq 0.8$  W/kg or 2.0 W/kg, for 1-g or 10-g respectively, when the transmission band is  $\leq 100$  MHz
  - $\leq 0.6$  W/kg or 1.5 W/kg, for 1-g or 10-g respectively, when the transmission band is between 100 MHz and 200 MHz
  - $\leq 0.4$  W/kg or 1.0 W/kg, for 1-g or 10-g respectively, when the transmission band is  $\geq 200$  MHz
3. Per KDB 865664 D01v01r04, for each frequency band, repeated SAR measurement is required only when the measured SAR is  $\geq 0.8$ W/kg.
4. Per KDB 648474 D04v01r03, when the reported SAR for a body-worn accessory measured without a headset connected to the handset is  $\leq 1.2$  W/kg, SAR testing with a headset connected to the handset is not required.
5. Power reduction for RF exposure consideration :
  - (a) Hotspot mode exposure conditions of WWAN transmitter:  
Once hotspot feature is activated, and will notify the WWAN modem side to enter the reduced power for WCDMA B2 / B4 and LTE B2 / B4.
  - (b) Head exposure conditions of WLAN transmitter:  
Once the voice call or VoIP call (either through WWAN bearer, or WLAN bearer) is established, upper layer will determine whether the audio is actively routed through the earpiece receiver. If yes, and will notify the WLAN side to enter the reduced power for 2.4GHz WLAN.
6. Per KDB648474 D04v01r03, for smart phones with a display diagonal dimension > 15.0 cm or an overall diagonal dimension > 16.0 cm, when hotspot mode applies, 10-g product specific SAR for WWAN transmitter is required only for the edges according to "operational description" with hotspot mode 1-g reported SAR > 1.2 W/kg, however, when power reduction applies to hotspot mode the measured SAR must be scaled to the maximum output power, including tolerance, allowed for phablet modes to compare with the 1.2W/kg SAR test reduction threshold, for this device front side and bottom side SAR for WWAN transmitter scaled to maximum output power is higher than 1.2W/kg of UMTS B4 and LTE B4, therefore product specific SAR is necessary.
7. For 5.3GHz / 5.5GHz WLAN product specific SAR is necessary too, due to an overall diagonal dimension is > 16cm.

### GSM Note:

1. Per KDB 941225 D01v03r01, for SAR test reduction for GSM / GPRS / EDGE / DTM modes is determined by the source-based time-averaged output power including tune-up tolerance. The mode with highest specified time-averaged output power should be tested for SAR compliance in the applicable exposure conditions. For modes with the same specified maximum output power and tolerance, the higher number time-slot configuration should be tested. Therefore, the GPRS (1Tx slot) for GSM850 and GPRS (4Tx slots) for GSM1900 are considered as the primary mode.
2. Other configurations of GSM / GPRS / EDGE / DTM are considered as secondary modes. The 3G SAR test reduction procedure is applied, when the maximum output power and tune-up tolerance specified for production units in a secondary mode is  $\leq 1/4$  dB higher than the primary mode, SAR measurement is not required for the secondary mode.

**UMTS Note:**

1. Per KDB 941225 D01v03r01, for SAR testing is measured using a 12.2 kbps RMC with TPC bits configured to all "1's".
2. Per KDB 941225 D01v03r01, RMC 12.2kbps setting is used to evaluate SAR. If the maximum output power and tune-up tolerance specified for production units in HSDPA / HSUPA / DC-HSDPA is  $\leq \frac{1}{4}$  dB higher than RMC 12.2Kbps or when the highest reported SAR of the RMC12.2Kbps is scaled by the ratio of specified maximum output power and tune-up tolerance of HSDPA / HSUPA / DC-HSDPA to RMC12.2Kbps and the adjusted SAR is  $\leq 1.2$  W/kg, SAR measurement is not required for HSDPA / HSUPA / DC-HSDPA.

**LTE Note:**

1. Per KDB 941225 D05v02r05, start with the largest channel bandwidth and measure SAR for QPSK with 1 RB allocation, using the RB offset and required test channel combination with the highest maximum output power for RB offsets at the upper edge, middle and lower edge of each required test channel.
2. Per KDB 941225 D05v02r05, 50% RB allocation for QPSK SAR testing follows 1RB QPSK allocation procedure.
3. Per KDB 941225 D05v02r05, For QPSK with 100% RB allocation, SAR is not required when the highest maximum output power for 100 % RB allocation is less than the highest maximum output power in 50% and 1 RB allocations and the highest reported SAR for 1 RB and 50% RB allocation are  $\leq 0.8$  W/kg. Otherwise, SAR is measured for the highest output power channel; and if the reported SAR is  $> 1.45$  W/kg, the remaining required test channels must also be tested.
4. Per KDB 941225 D05v02r05, 16QAM output power for each RB allocation configuration is  $>$  not  $\frac{1}{2}$  dB higher than the same configuration in QPSK and the reported SAR for the QPSK configuration is  $\leq 1.45$  W/kg; Per KDB 941225 D05v02r05, 16QAM SAR testing is not required.
5. Per KDB 941225 D05v02r05, Smaller bandwidth output power for each RB allocation configuration is  $>$  not  $\frac{1}{2}$  dB higher than the same configuration in the largest supported bandwidth, and the reported SAR for the largest supported bandwidth is  $\leq 1.45$  W/kg; Per KDB 941225 D05v02r05, smaller bandwidth SAR testing is not required.
6. For LTE B12 / B4 / B38 the maximum bandwidth does not support three non-overlapping channels, per KDB 941225 D05v02r05, when a device supports overlapping channel assignment in a channel bandwidth configuration, the middle channel of the group of overlapping channels should be selected for testing.
7. LTE band 17 SAR test was covered by Band 12; according to TCB workshop, SAR test for overlapping LTE bands can be reduced if
  - c. The maximum output power, including tolerance, for the smaller band is  $\leq$  the larger band to qualify for the SAR test exclusion.
  - d. The channel bandwidth and other operating parameters for the smaller band are fully supported by the larger band.

**WLAN Note:**

1. Per KDB 248227 D01v02r02, for 2.4GHz 802.11g/n SAR testing is not required when the highest reported SAR for DSSS is adjusted by the ratio of OFDM to DSSS specified maximum output power and the adjusted SAR is  $\leq 1.2$  W/kg.
2. Per KDB 248227 D01v02r02, U-NII-1 SAR testing is not required when the U-NII-2A band highest reported SAR for a test configuration is  $\leq 1.2$  W/kg, SAR is not required for U-NII-1 band.
3. When the reported SAR of the test position is  $> 0.4$  W/kg, SAR is repeated for the 802.11 transmission mode configuration tested in the initial test position to measure the subsequent next closet/smallest test separation distance and maximum coupling test position on the highest maximum output power channel, until the report SAR is  $\leq 0.8$  W/kg or all required test position are tested.
4. For all positions / configurations, when the reported SAR is  $> 0.8$  W/kg, SAR is measured for these test positions / configurations on the subsequent next highest measured output power channel(s) until the reported SAR is  $\leq 1.2$  W/kg or all required channels are tested.
5. During SAR testing the WLAN transmission was verified using a spectrum analyzer.



**15.1 Head SAR**

**<GSM SAR>**

Plot No.	Band	Mode	Test Position	Gap (mm)	Ch.	Freq. (MHz)	Average Power (dBm)	Tune-Up Limit (dBm)	Tune-up Scaling Factor	Power Drift (dB)	Measured 1g SAR (W/kg)	Reported 1g SAR (W/kg)
01	GSM850	GPRS (1 Tx slot)	Right Cheek	0mm	189	836.4	32.74	33.00	1.062	0.08	0.177	0.188
	GSM850	GPRS (1 Tx slot)	Right Tilted	0mm	189	836.4	32.74	33.00	1.062	0.15	0.086	0.091
	GSM850	GPRS (1 Tx slot)	Left Cheek	0mm	189	836.4	32.74	33.00	1.062	-0.07	0.170	0.180
	GSM850	GPRS (1 Tx slot)	Left Tilted	0mm	189	836.4	32.74	33.00	1.062	0.01	0.100	0.106
	GSM1900	GPRS (4 Tx slots)	Right Cheek	0mm	810	1909.8	25.82	26.00	1.042	0.13	0.082	0.085
	GSM1900	GPRS (4 Tx slots)	Right Tilted	0mm	810	1909.8	25.82	26.00	1.042	0.06	0.065	0.068
02	GSM1900	GPRS (4 Tx slots)	Left Cheek	0mm	810	1909.8	25.82	26.00	1.042	-0.18	0.175	0.182
	GSM1900	GPRS (4 Tx slots)	Left Tilted	0mm	810	1909.8	25.82	26.00	1.042	0	0.050	0.052

**<WCDMA SAR>**

Plot No.	Band	Mode	Test Position	Gap (mm)	Ch.	Freq. (MHz)	Average Power (dBm)	Tune-Up Limit (dBm)	Tune-up Scaling Factor	Power Drift (dB)	Measured 1g SAR (W/kg)	Reported 1g SAR (W/kg)
	WCDMA II	RMC 12.2Kbps	Right Cheek	0mm	9538	1907.6	23.97	24.00	1.007	0.17	0.142	0.143
	WCDMA II	RMC 12.2Kbps	Right Tilted	0mm	9538	1907.6	23.97	24.00	1.007	0.04	0.106	0.107
03	WCDMA II	RMC 12.2Kbps	Left Cheek	0mm	9538	1907.6	23.97	24.00	1.007	-0.17	0.283	0.285
	WCDMA II	RMC 12.2Kbps	Left Tilted	0mm	9538	1907.6	23.97	24.00	1.007	0.06	0.081	0.082
	WCDMA IV	RMC 12.2Kbps	Right Cheek	0mm	1413	1732.6	23.98	24.00	1.005	0.09	0.074	0.074
	WCDMA IV	RMC 12.2Kbps	Right Tilted	0mm	1413	1732.6	23.98	24.00	1.005	0.11	0.068	0.068
04	WCDMA IV	RMC 12.2Kbps	Left Cheek	0mm	1413	1732.6	23.98	24.00	1.005	-0.02	0.156	0.157
	WCDMA IV	RMC 12.2Kbps	Left Tilted	0mm	1413	1732.6	23.98	24.00	1.005	-0.1	0.053	0.053
05	WCDMA V	RMC 12.2Kbps	Right Cheek	0mm	4182	836.4	23.75	24.00	1.059	0.08	0.197	0.209
	WCDMA V	RMC 12.2Kbps	Right Tilted	0mm	4182	836.4	23.75	24.00	1.059	0.03	0.091	0.096
	WCDMA V	RMC 12.2Kbps	Left Cheek	0mm	4182	836.4	23.75	24.00	1.059	0	0.183	0.194
	WCDMA V	RMC 12.2Kbps	Left Tilted	0mm	4182	836.4	23.75	24.00	1.059	-0.1	0.112	0.119



<FDD LTE SAR>

Plot No.	Band	BW (MHz)	Modulation	RB Size	RB offset	Test Position	Gap (mm)	Ch.	Freq. (MHz)	Average Power (dBm)	Tune-Up Limit (dBm)	Tune-up Scaling Factor	Power Drift (dB)	Measured 1g SAR (W/kg)	Reported 1g SAR (W/kg)
	LTE Band 2	20M	QPSK	1	49	Right Cheek	0mm	19100	1900	23.85	24.00	1.035	0.1	0.103	0.107
	LTE Band 2	20M	QPSK	50	50	Right Cheek	0mm	19100	1900	22.79	23.00	1.050	0.07	0.080	0.084
	LTE Band 2	20M	QPSK	1	49	Right Tilted	0mm	19100	1900	23.85	24.00	1.035	0.14	0.078	0.081
	LTE Band 2	20M	QPSK	50	50	Right Tilted	0mm	19100	1900	22.79	23.00	1.050	0.07	0.060	0.063
06	LTE Band 2	20M	QPSK	1	49	Left Cheek	0mm	19100	1900	23.85	24.00	1.035	-0.11	0.218	0.226
	LTE Band 2	20M	QPSK	50	50	Left Cheek	0mm	19100	1900	22.79	23.00	1.050	0.02	0.173	0.182
	LTE Band 2	20M	QPSK	1	49	Left Tilted	0mm	19100	1900	23.85	24.00	1.035	-0.06	0.087	0.090
	LTE Band 2	20M	QPSK	50	50	Left Tilted	0mm	19100	1900	22.79	23.00	1.050	-0.08	0.070	0.073
	LTE Band 4	20M	QPSK	1	0	Right Cheek	0mm	20175	1732.5	23.89	24.00	1.026	0.02	0.074	0.076
	LTE Band 4	20M	QPSK	50	0	Right Cheek	0mm	20175	1732.5	22.89	23.00	1.026	-0.03	0.047	0.048
	LTE Band 4	20M	QPSK	1	0	Right Tilted	0mm	20175	1732.5	23.89	24.00	1.026	-0.07	0.059	0.061
	LTE Band 4	20M	QPSK	50	0	Right Tilted	0mm	20175	1732.5	22.89	23.00	1.026	0.16	0.049	0.050
07	LTE Band 4	20M	QPSK	1	0	Left Cheek	0mm	20175	1732.5	23.89	24.00	1.026	0.05	0.147	0.151
	LTE Band 4	20M	QPSK	50	0	Left Cheek	0mm	20175	1732.5	22.89	23.00	1.026	-0.11	0.115	0.118
	LTE Band 4	20M	QPSK	1	0	Left Tilted	0mm	20175	1732.5	23.89	24.00	1.026	-0.06	0.049	0.050
	LTE Band 4	20M	QPSK	50	0	Left Tilted	0mm	20175	1732.5	22.89	23.00	1.026	-0.02	0.040	0.041
08	LTE Band 7	20M	QPSK	1	0	Right Cheek	0mm	20850	2510	23.36	24.00	1.159	-0.16	0.148	0.171
	LTE Band 7	20M	QPSK	50	0	Right Cheek	0mm	20850	2510	22.06	23.00	1.242	-0.15	0.119	0.148
	LTE Band 7	20M	QPSK	1	0	Right Tilted	0mm	20850	2510	23.36	24.00	1.159	0.16	0.033	0.038
	LTE Band 7	20M	QPSK	50	0	Right Tilted	0mm	20850	2510	22.06	23.00	1.242	0.14	0.027	0.034
	LTE Band 7	20M	QPSK	1	0	Left Cheek	0mm	20850	2510	23.36	24.00	1.159	0.08	0.117	0.136
	LTE Band 7	20M	QPSK	50	0	Left Cheek	0mm	20850	2510	22.06	23.00	1.242	-0.1	0.096	0.119
	LTE Band 7	20M	QPSK	1	0	Left Tilted	0mm	20850	2510	23.36	24.00	1.159	0.18	0.072	0.083
	LTE Band 7	20M	QPSK	50	0	Left Tilted	0mm	20850	2510	22.06	23.00	1.242	-0.02	0.059	0.073
	LTE Band 12	10M	QPSK	1	25	Right Cheek	0mm	23095	707.5	23.94	24.00	1.014	0.14	0.055	0.056
	LTE Band 12	10M	QPSK	25	12	Right Cheek	0mm	23095	707.5	22.88	23.00	1.028	0.02	0.041	0.042
	LTE Band 12	10M	QPSK	1	25	Right Tilted	0mm	23095	707.5	23.94	24.00	1.014	0.08	0.027	0.027
	LTE Band 12	10M	QPSK	25	12	Right Tilted	0mm	23095	707.5	22.88	23.00	1.028	0.16	0.022	0.023
09	LTE Band 12	10M	QPSK	1	25	Left Cheek	0mm	23095	707.5	23.94	24.00	1.014	0.14	0.070	0.071
	LTE Band 12	10M	QPSK	25	12	Left Cheek	0mm	23095	707.5	22.88	23.00	1.028	0.08	0.057	0.059
	LTE Band 12	10M	QPSK	1	25	Left Tilted	0mm	23095	707.5	23.94	24.00	1.014	0.09	0.033	0.033
	LTE Band 12	10M	QPSK	25	12	Left Tilted	0mm	23095	707.5	22.88	23.00	1.028	-0.04	0.030	0.031



**<TDD LTE SAR>**

Plot No.	Band	BW (MHz)	Modulation	RB Size	RB offset	Test Position	Gap (mm)	Ch.	Freq. (MHz)	Average Power (dBm)	Tune-Up Limit (dBm)	Tune-up Scaling Factor	Duty Cycle %	Duty Cycle Scaling Factor	Power Drift (dB)	Measured 1g SAR (W/kg)	Reported 1g SAR (W/kg)
10	LTE Band 38	20M	QPSK	1	0	Right Cheek	0mm	38000	2595	23.50	24.00	1.122	62.9	1.006	0.03	0.071	0.080
	LTE Band 38	20M	QPSK	50	0	Right Cheek	0mm	38000	2595	22.68	23.00	1.076	62.9	1.006	-0.13	0.055	0.060
	LTE Band 38	20M	QPSK	1	0	Right Tilted	0mm	38000	2595	23.50	24.00	1.122	62.9	1.006	0.07	0.015	0.017
	LTE Band 38	20M	QPSK	50	0	Right Tilted	0mm	38000	2595	22.68	23.00	1.076	62.9	1.006	-0.09	0.013	0.014
	LTE Band 38	20M	QPSK	1	0	Left Cheek	0mm	38000	2595	23.50	24.00	1.122	62.9	1.006	0.06	0.047	0.053
	LTE Band 38	20M	QPSK	50	0	Left Cheek	0mm	38000	2595	22.68	23.00	1.076	62.9	1.006	-0.08	0.037	0.040
	LTE Band 38	20M	QPSK	1	0	Left Tilted	0mm	38000	2595	23.50	24.00	1.122	62.9	1.006	0.07	0.031	0.035
	LTE Band 38	20M	QPSK	50	0	Left Tilted	0mm	38000	2595	22.68	23.00	1.076	62.9	1.006	-0.09	0.024	0.026

**<WLAN SAR>**

Plot No.	Band	Mode	Test Position	Gap (mm)	Power Reduction	Ch.	Freq. (MHz)	Average Power (dBm)	Tune-Up Limit (dBm)	Tune-up Scaling Factor	Duty Cycle %	Duty Cycle Scaling Factor	Power Drift (dB)	Measured 1g SAR (W/kg)	Reported 1g SAR (W/kg)
11	WLAN2.4GHz	802.11b 1Mbps	Right Cheek	0mm	ON	11	2462	13.99	14.00	1.003	97.16	1.029	0.17	0.770	0.795
	WLAN2.4GHz	802.11b 1Mbps	Right Tilted	0mm	ON	11	2462	13.99	14.00	1.003	97.16	1.029	0.1	0.562	0.580
	WLAN2.4GHz	802.11b 1Mbps	Left Cheek	0mm	ON	11	2462	13.99	14.00	1.003	97.16	1.029	0.01	0.228	0.235
	WLAN2.4GHz	802.11b 1Mbps	Left Tilted	0mm	ON	11	2462	13.99	14.00	1.003	97.16	1.029	0.02	0.177	0.183
12	WLAN5GHz	802.11n-HT40 MCS0	Right Cheek	0mm	OFF	62	5310	14.21	14.50	1.069	86.49	1.156	0.12	0.337	0.416
	WLAN5GHz	802.11n-HT40 MCS0	Right Tilted	0mm	OFF	62	5310	14.21	14.50	1.069	86.49	1.156	-0.1	0.329	0.407
	WLAN5GHz	802.11n-HT40 MCS0	Left Cheek	0mm	OFF	62	5310	14.21	14.50	1.069	86.49	1.156	0.1	0.171	0.211
	WLAN5GHz	802.11n-HT40 MCS0	Left Tilted	0mm	OFF	62	5310	14.21	14.50	1.069	86.49	1.156	0	0.182	0.225
13	WLAN5GHz	802.11n-HT40 MCS0	Right Cheek	0mm	OFF	102	5510	14.17	14.50	1.079	86.49	1.156	0.17	0.086	0.107
	WLAN5GHz	802.11n-HT40 MCS0	Right Tilted	0mm	OFF	102	5510	14.17	14.50	1.079	86.49	1.156	0.13	0.081	0.101
	WLAN5GHz	802.11n-HT40 MCS0	Left Cheek	0mm	OFF	102	5510	14.17	14.50	1.079	86.49	1.156	0.03	0.048	0.060
	WLAN5GHz	802.11n-HT40 MCS0	Left Tilted	0mm	OFF	102	5510	14.17	14.50	1.079	86.49	1.156	0.1	0.052	0.065
14	WLAN5GHz	802.11n-HT40 MCS0	Right Cheek	0mm	OFF	151	5755	14.34	14.50	1.037	86.49	1.156	0.11	0.060	0.072
	WLAN5GHz	802.11n-HT40 MCS0	Right Tilted	0mm	OFF	151	5755	14.34	14.50	1.037	86.49	1.156	0.19	0.021	0.025
	WLAN5GHz	802.11n-HT40 MCS0	Left Cheek	0mm	OFF	151	5755	14.34	14.50	1.037	86.49	1.156	-0.12	0.025	0.030
	WLAN5GHz	802.11n-HT40 MCS0	Left Tilted	0mm	OFF	151	5755	14.34	14.50	1.037	86.49	1.156	0.17	0.018	0.022



**15.2 Hotspot SAR**

**<GSM SAR>**

Plot No.	Band	Mode	Test Position	Gap (mm)	Power Reduction	Ch.	Freq. (MHz)	Average Power (dBm)	Tune-Up Limit (dBm)	Tune-up Scaling Factor	Power Drift (dB)	Measured 1g SAR (W/kg)	Reported 1g SAR (W/kg)
15	GSM850	GPRS (1 Tx slot)	Front	10mm	OFF	189	836.4	32.74	33.00	1.062	-0.05	0.343	0.364
	GSM850	GPRS (1 Tx slot)	Back	10mm	OFF	189	836.4	32.74	33.00	1.062	-0.06	0.199	0.211
	GSM850	GPRS (1 Tx slot)	Left Side	10mm	OFF	189	836.4	32.74	33.00	1.062	0.04	0.130	0.138
	GSM850	GPRS (1 Tx slot)	Right Side	10mm	OFF	189	836.4	32.74	33.00	1.062	0.01	0.241	0.256
	GSM850	GPRS (1 Tx slot)	Bottom Side	10mm	OFF	189	836.4	32.74	33.00	1.062	-0.11	0.150	0.159
16	GSM1900	GPRS (4 Tx slots)	Front	10mm	OFF	810	1909.8	25.82	26.00	1.042	0.05	0.796	0.830
	GSM1900	GPRS (4 Tx slots)	Front	10mm	OFF	512	1850.2	25.33	26.00	1.167	-0.03	1.020	1.190
	GSM1900	GPRS (4 Tx slots)	Front	10mm	OFF	661	1880	25.60	26.00	1.096	-0.05	0.899	0.986
	GSM1900	GPRS (4 Tx slots)	Back	10mm	OFF	810	1909.8	25.82	26.00	1.042	0.04	0.162	0.169
	GSM1900	GPRS (4 Tx slots)	Left Side	10mm	OFF	810	1909.8	25.82	26.00	1.042	0.01	0.255	0.266
	GSM1900	GPRS (4 Tx slots)	Right Side	10mm	OFF	810	1909.8	25.82	26.00	1.042	0.04	0.009	0.010
	GSM1900	GPRS (4 Tx slots)	Bottom Side	10mm	OFF	810	1909.8	25.82	26.00	1.042	-0.02	0.683	0.712

**<WCDMA SAR>**

Plot No.	Band	Mode	Test Position	Gap (mm)	Power Reduction	Ch.	Freq. (MHz)	Average Power (dBm)	Tune-Up Limit (dBm)	Tune-up Scaling Factor	Power Drift (dB)	Measured 1g SAR (W/kg)	Reported 1g SAR (W/kg)
17	WCDMA II	RMC 12.2Kbps	Front	10mm	ON	9400	1880	22.74	23.00	1.062	-0.09	0.866	0.919
	WCDMA II	RMC 12.2Kbps	Front	10mm	ON	9262	1852.4	22.55	23.00	1.109	-0.04	0.841	0.933
	WCDMA II	RMC 12.2Kbps	Front	10mm	ON	9538	1907.6	22.73	23.00	1.064	-0.11	0.875	0.931
	WCDMA II	RMC 12.2Kbps	Back	10mm	ON	9400	1880	22.74	23.00	1.062	-0.04	0.172	0.183
	WCDMA II	RMC 12.2Kbps	Left Side	10mm	ON	9400	1880	22.74	23.00	1.062	-0.03	0.297	0.315
	WCDMA II	RMC 12.2Kbps	Right Side	10mm	ON	9400	1880	22.74	23.00	1.062	-0.03	0.014	0.015
	WCDMA II	RMC 12.2Kbps	Bottom Side	10mm	ON	9400	1880	22.74	23.00	1.062	-0.02	0.773	0.821
	WCDMA II	RMC 12.2Kbps	Bottom Side	10mm	ON	9262	1852.4	22.55	23.00	1.109	-0.13	0.823	0.913
	WCDMA II	RMC 12.2Kbps	Bottom Side	10mm	ON	9538	1907.6	22.73	23.00	1.064	-0.06	0.753	0.801
	WCDMA IV	RMC 12.2Kbps	Front	10mm	ON	1413	1732.6	22.23	22.50	1.064	-0.05	1.020	1.085
18	WCDMA IV	RMC 12.2Kbps	Front	10mm	ON	1312	1712.4	22.16	22.50	1.081	0.06	1.070	1.157
	WCDMA IV	RMC 12.2Kbps	Front	10mm	ON	1513	1752.6	22.18	22.50	1.076	0.03	0.910	0.980
	WCDMA IV	RMC 12.2Kbps	Back	10mm	ON	1413	1732.6	22.23	22.50	1.064	-0.07	0.140	0.149
	WCDMA IV	RMC 12.2Kbps	Left Side	10mm	ON	1413	1732.6	22.23	22.50	1.064	0.03	0.108	0.115
	WCDMA IV	RMC 12.2Kbps	Right Side	10mm	ON	1413	1732.6	22.23	22.50	1.064	0.15	0.008	0.009
	WCDMA IV	RMC 12.2Kbps	Bottom Side	10mm	ON	1413	1732.6	22.23	22.50	1.064	-0.13	0.969	1.031
	WCDMA IV	RMC 12.2Kbps	Bottom Side	10mm	ON	1312	1712.4	22.16	22.50	1.081	-0.16	0.951	1.028
19	WCDMA V	RMC 12.2Kbps	Front	10mm	OFF	4182	836.4	23.75	24.00	1.059	0.06	0.374	0.396
	WCDMA V	RMC 12.2Kbps	Back	10mm	OFF	4182	836.4	23.75	24.00	1.059	-0.02	0.211	0.224
	WCDMA V	RMC 12.2Kbps	Left Side	10mm	OFF	4182	836.4	23.75	24.00	1.059	0.07	0.154	0.163
	WCDMA V	RMC 12.2Kbps	Right Side	10mm	OFF	4182	836.4	23.75	24.00	1.059	0.05	0.276	0.292
	WCDMA V	RMC 12.2Kbps	Bottom Side	10mm	OFF	4182	836.4	23.75	24.00	1.059	-0.14	0.177	0.187



<FDD LTE SAR>

Plot No.	Band	BW (MHz)	Modulation	RB Size	RB offset	Test Position	Gap (mm)	Power Reduction	Ch.	Freq. (MHz)	Average Power (dBm)	Tune-Up Limit (dBm)	Tune-up Scaling Factor	Power Drift (dB)	Measured 1g SAR (W/kg)	Reported 1g SAR (W/kg)
	LTE Band 2	20M	QPSK	1	49	Front	10mm	ON	18900	1880	22.98	23.00	1.005	-0.08	0.798	0.802
	LTE Band 2	20M	QPSK	1	49	Front	10mm	ON	18700	1860	22.93	23.00	1.016	0	0.766	0.778
20	LTE Band 2	20M	QPSK	1	49	Front	10mm	ON	19100	1900	22.87	23.00	1.030	-0.02	0.797	0.821
	LTE Band 2	20M	QPSK	50	24	Front	10mm	ON	18900	1880	21.92	22.00	1.019	0.12	0.649	0.661
	LTE Band 2	20M	QPSK	100	0	Front	10mm	ON	18900	1880	21.88	22.00	1.028	0.05	0.646	0.664
	LTE Band 2	20M	QPSK	1	49	Back	10mm	ON	18900	1880	22.98	23.00	1.005	0.09	0.145	0.146
	LTE Band 2	20M	QPSK	50	24	Back	10mm	ON	18900	1880	21.92	22.00	1.019	0	0.116	0.118
	LTE Band 2	20M	QPSK	1	49	Left Side	10mm	ON	18900	1880	22.98	23.00	1.005	0.04	0.283	0.284
	LTE Band 2	20M	QPSK	50	24	Left Side	10mm	ON	18900	1880	21.92	22.00	1.019	0.03	0.222	0.226
	LTE Band 2	20M	QPSK	1	49	Right Side	10mm	ON	18900	1880	22.98	23.00	1.005	0.1	0.015	0.015
	LTE Band 2	20M	QPSK	50	24	Right Side	10mm	ON	18900	1880	21.92	22.00	1.019	0.12	0.013	0.013
	LTE Band 2	20M	QPSK	1	49	Bottom Side	10mm	ON	18900	1880	22.98	23.00	1.005	-0.1	0.785	0.789
	LTE Band 2	20M	QPSK	50	24	Bottom Side	10mm	ON	18900	1880	21.92	22.00	1.019	-0.15	0.623	0.635
21	LTE Band 4	20M	QPSK	1	49	Front	10mm	ON	20175	1732.5	22.29	22.50	1.050	0.03	1.040	1.092
	LTE Band 4	20M	QPSK	50	0	Front	10mm	ON	20175	1732.5	21.24	21.50	1.062	0.02	0.843	0.895
	LTE Band 4	20M	QPSK	100	0	Front	10mm	ON	20175	1732.5	21.22	21.50	1.067	-0.04	0.832	0.887
	LTE Band 4	20M	QPSK	1	49	Back	10mm	ON	20175	1732.5	22.29	22.50	1.050	0.06	0.135	0.142
	LTE Band 4	20M	QPSK	50	0	Back	10mm	ON	20175	1732.5	21.24	21.50	1.062	-0.01	0.110	0.117
	LTE Band 4	20M	QPSK	1	49	Left Side	10mm	ON	20175	1732.5	22.29	22.50	1.050	0.02	0.110	0.115
	LTE Band 4	20M	QPSK	50	0	Left Side	10mm	ON	20175	1732.5	21.24	21.50	1.062	0.02	0.085	0.090
	LTE Band 4	20M	QPSK	1	49	Right Side	10mm	ON	20175	1732.5	22.29	22.50	1.050	-0.13	0.014	0.015
	LTE Band 4	20M	QPSK	50	0	Right Side	10mm	ON	20175	1732.5	21.24	21.50	1.062	0.17	0.013	0.014
	LTE Band 4	20M	QPSK	1	49	Bottom Side	10mm	ON	20175	1732.5	22.29	22.50	1.050	-0.13	0.979	1.028
	LTE Band 4	20M	QPSK	50	0	Bottom Side	10mm	ON	20175	1732.5	21.24	21.50	1.062	-0.14	0.799	0.848
	LTE Band 4	20M	QPSK	100	0	Bottom Side	10mm	ON	20175	1732.5	21.22	21.50	1.067	-0.18	0.786	0.838
22	LTE Band 7	20M	QPSK	1	0	Front	10mm	OFF	20850	2510	23.36	24.00	1.159	0.19	0.400	0.464
	LTE Band 7	20M	QPSK	50	0	Front	10mm	OFF	20850	2510	22.06	23.00	1.242	0.04	0.329	0.409
	LTE Band 7	20M	QPSK	1	0	Back	10mm	OFF	20850	2510	23.36	24.00	1.159	0.12	0.327	0.379
	LTE Band 7	20M	QPSK	50	0	Back	10mm	OFF	20850	2510	22.06	23.00	1.242	0.02	0.270	0.335
	LTE Band 7	20M	QPSK	1	0	Left Side	10mm	OFF	20850	2510	23.36	24.00	1.159	-0.16	0.077	0.089
	LTE Band 7	20M	QPSK	50	0	Left Side	10mm	OFF	20850	2510	22.06	23.00	1.242	0.13	0.064	0.079
	LTE Band 7	20M	QPSK	1	0	Right Side	10mm	OFF	20850	2510	23.36	24.00	1.159	-0.04	0.360	0.417
	LTE Band 7	20M	QPSK	50	0	Right Side	10mm	OFF	20850	2510	22.06	23.00	1.242	0.1	0.306	0.380
	LTE Band 7	20M	QPSK	1	0	Bottom Side	10mm	OFF	20850	2510	23.36	24.00	1.159	0	0.384	0.445
	LTE Band 7	20M	QPSK	50	0	Bottom Side	10mm	OFF	20850	2510	22.06	23.00	1.242	0.12	0.313	0.389
23	LTE Band 12	10M	QPSK	1	25	Front	10mm	OFF	23095	707.5	23.94	24.00	1.014	0.01	0.296	0.300
	LTE Band 12	10M	QPSK	25	12	Front	10mm	OFF	23095	707.5	22.88	23.00	1.028	-0.06	0.239	0.246
	LTE Band 12	10M	QPSK	1	25	Back	10mm	OFF	23095	707.5	23.94	24.00	1.014	0.1	0.179	0.181
	LTE Band 12	10M	QPSK	25	12	Back	10mm	OFF	23095	707.5	22.88	23.00	1.028	0.03	0.143	0.147
	LTE Band 12	10M	QPSK	1	25	Left Side	10mm	OFF	23095	707.5	23.94	24.00	1.014	0	0.130	0.132
	LTE Band 12	10M	QPSK	25	12	Left Side	10mm	OFF	23095	707.5	22.88	23.00	1.028	-0.03	0.104	0.107
	LTE Band 12	10M	QPSK	1	25	Right Side	10mm	OFF	23095	707.5	23.94	24.00	1.014	0.03	0.142	0.144
	LTE Band 12	10M	QPSK	25	12	Right Side	10mm	OFF	23095	707.5	22.88	23.00	1.028	0.01	0.114	0.117
	LTE Band 12	10M	QPSK	1	25	Bottom Side	10mm	OFF	23095	707.5	23.94	24.00	1.014	0.12	0.102	0.103
	LTE Band 12	10M	QPSK	25	12	Bottom Side	10mm	OFF	23095	707.5	22.88	23.00	1.028	0.07	0.092	0.095



<TDD LTE SAR>

Plot No.	Band	BW (MHz)	Modulation	RB Size	RB offset	Test Position	Gap (mm)	Power Reduction	Ch.	Freq. (MHz)	Average Power (dBm)	Tune-Up Limit (dBm)	Tune-up Scaling Factor	Duty Cycle %	Duty Cycle Scaling Factor	Power Drift (dB)	Measured 1g SAR (W/kg)	Reported 1g SAR (W/kg)
24	LTE Band 38	20M	QPSK	1	0	Front	10mm	OFF	38000	2595	23.50	24.00	1.122	62.9	1.006	-0.18	0.193	0.218
	LTE Band 38	20M	QPSK	50	0	Front	10mm	OFF	38000	2595	22.68	23.00	1.076	62.9	1.006	-0.1	0.160	0.173
	LTE Band 38	20M	QPSK	1	0	Back	10mm	OFF	38000	2595	23.50	24.00	1.122	62.9	1.006	0.03	0.101	0.114
	LTE Band 38	20M	QPSK	50	0	Back	10mm	OFF	38000	2595	22.68	23.00	1.076	62.9	1.006	-0.07	0.083	0.090
	LTE Band 38	20M	QPSK	1	0	Left Side	10mm	OFF	38000	2595	23.50	24.00	1.122	62.9	1.006	-0.04	0.032	0.036
	LTE Band 38	20M	QPSK	50	0	Left Side	10mm	OFF	38000	2595	22.68	23.00	1.076	62.9	1.006	-0.04	0.029	0.031
	LTE Band 38	20M	QPSK	1	0	Right Side	10mm	OFF	38000	2595	23.50	24.00	1.122	62.9	1.006	-0.07	0.129	0.146
	LTE Band 38	20M	QPSK	50	0	Right Side	10mm	OFF	38000	2595	22.68	23.00	1.076	62.9	1.006	-0.11	0.102	0.110
	LTE Band 38	20M	QPSK	1	0	Bottom Side	10mm	OFF	38000	2595	23.50	24.00	1.122	62.9	1.006	0.09	0.136	0.154
	LTE Band 38	20M	QPSK	50	0	Bottom Side	10mm	OFF	38000	2595	22.68	23.00	1.076	62.9	1.006	0.11	0.112	0.121

<WLAN SAR>

Plot No.	Band	Mode	Test Position	Gap (mm)	Ch.	Freq. (MHz)	Average Power (dBm)	Tune-Up Limit (dBm)	Tune-up Scaling Factor	Duty Cycle %	Duty Cycle Scaling Factor	Power Drift (dB)	Measured 1g SAR (W/kg)	Reported 1g SAR (W/kg)
25	WLAN2.4GHz	802.11b 1Mbps	Front	10mm	1	2412	18.37	18.50	1.032	97.16	1.029	0.14	0.173	0.184
	WLAN2.4GHz	802.11b 1Mbps	Back	10mm	1	2412	18.37	18.50	1.032	97.16	1.029	0.14	0.052	0.055
	WLAN2.4GHz	802.11b 1Mbps	Left Side	10mm	1	2412	18.37	18.50	1.032	97.16	1.029	0.04	0.053	0.056
	WLAN2.4GHz	802.11b 1Mbps	Top Side	10mm	1	2412	18.37	18.50	1.032	97.16	1.029	-0.06	0.057	0.061
26	WLAN5GHz	802.11n-HT40 MCS0	Front	10mm	38	5190	14.23	14.50	1.064	86.49	1.156	0.13	0.063	0.077
	WLAN5GHz	802.11n-HT40 MCS0	Back	10mm	38	5190	14.23	14.50	1.064	86.49	1.156	-0.14	0.007	0.008
	WLAN5GHz	802.11n-HT40 MCS0	Left Side	10mm	38	5190	14.23	14.50	1.064	86.49	1.156	-0.14	0.016	0.020
	WLAN5GHz	802.11n-HT40 MCS0	Top Side	10mm	38	5190	14.23	14.50	1.064	86.49	1.156	-0.09	0.037	0.046
27	WLAN5GHz	802.11n-HT40 MCS0	Front	10mm	151	5755	14.34	14.50	1.037	86.49	1.156	-0.18	0.015	0.018
	WLAN5GHz	802.11n-HT40 MCS0	Back	10mm	151	5755	14.34	14.50	1.037	86.49	1.156	0.07	0.001	0.001
	WLAN5GHz	802.11n-HT40 MCS0	Left Side	10mm	151	5755	14.34	14.50	1.037	86.49	1.156	0.17	0.006	0.007
	WLAN5GHz	802.11n-HT40 MCS0	Top Side	10mm	151	5755	14.34	14.50	1.037	86.49	1.156	-0.16	0.001	0.001





**15.3 Product Specific SAR**

**<WCDMA SAR>**

Plot No.	Band	Mode	Test Position	Gap (mm)	Ch.	Freq. (MHz)	Average Power (dBm)	Tune-Up Limit (dBm)	Tune-up Scaling Factor	Power Drift (dB)	Measured 10g SAR (W/kg)	Reported 10g SAR (W/kg)
28	WCDMA IV	RMC 12.2Kbps	Front	0mm	1312	1712.4	23.73	24.00	1.064	-0.08	2.000	2.128
	WCDMA IV	RMC 12.2Kbps	Front	0mm	1413	1732.6	23.98	24.00	1.005	0.02	2.030	2.039
	WCDMA IV	RMC 12.2Kbps	Front	0mm	1513	1752.6	23.95	24.00	1.012	0.08	2.070	2.094
	WCDMA IV	RMC 12.2Kbps	Bottom Side	0mm	1413	1732.6	23.98	24.00	1.005	-0.16	1.310	1.316

**<FDD LTE SAR>**

Plot No.	Band	BW (MHz)	Modulation	RB Size	RB offset	Test Position	Gap (mm)	Ch.	Freq. (MHz)	Average Power (dBm)	Tune-Up Limit (dBm)	Tune-up Scaling Factor	Power Drift (dB)	Measured 10g SAR (W/kg)	Reported 10g SAR (W/kg)
29	LTE Band 4	20M	QPSK	1	0	Front	0mm	20175	1732.5	23.89	24.00	1.026	0.01	1.920	1.969
	LTE Band 4	20M	QPSK	1	0	Bottom Side	0mm	20175	1732.5	23.89	24.00	1.026	-0.19	1.370	1.405

**<WLAN SAR>**

Plot No.	Band	Mode	Test Position	Gap (mm)	Ch.	Freq. (MHz)	Average Power (dBm)	Tune-Up Limit (dBm)	Tune-up Scaling Factor	Duty Cycle %	Duty Cycle Scaling Factor	Power Drift (dB)	Measured 10g SAR (W/kg)	Reported 10g SAR (W/kg)
30	WLAN5GHz	802.11n-HT40 MCS0	Front	0mm	62	5310	14.21	14.50	1.069	86.49	1.156	0.15	0.149	0.184
	WLAN5GHz	802.11n-HT40 MCS0	Back	0mm	62	5310	14.21	14.50	1.069	86.49	1.156	0.18	0.023	0.028
	WLAN5GHz	802.11n-HT40 MCS0	Left Side	0mm	62	5310	14.21	14.50	1.069	86.49	1.156	-0.18	0.004	0.005
	WLAN5GHz	802.11n-HT40 MCS0	Top Side	0mm	62	5310	14.21	14.50	1.069	86.49	1.156	0.18	0.044	0.054
31	WLAN5GHz	802.11n-HT40 MCS0	Front	0mm	102	5510	14.17	14.50	1.079	86.49	1.156	0.05	0.073	0.091
	WLAN5GHz	802.11n-HT40 MCS0	Back	0mm	102	5510	14.17	14.50	1.079	86.49	1.156	-0.17	0.006	0.007
	WLAN5GHz	802.11n-HT40 MCS0	Left Side	0mm	102	5510	14.17	14.50	1.079	86.49	1.156	0.01	0.016	0.020
	WLAN5GHz	802.11n-HT40 MCS0	Top Side	0mm	102	5510	14.17	14.50	1.079	86.49	1.156	-0.13	0.009	0.012



**15.4 Body Worn Accessory SAR**

**<GSM SAR>**

Plot No.	Band	Mode	Test Position	Gap (mm)	Ch.	Freq. (MHz)	Average Power (dBm)	Tune-Up Limit (dBm)	Tune-up Scaling Factor	Power Drift (dB)	Measured 1g SAR (W/kg)	Reported 1g SAR (W/kg)
32	GSM850	GPRS (1 Tx slot)	Front	15mm	189	836.4	32.74	33.00	1.062	-0.01	0.222	0.236
	GSM850	GPRS (1 Tx slot)	Back	15mm	189	836.4	32.74	33.00	1.062	0.04	0.179	0.190
33	GSM1900	GPRS (4 Tx slots)	Front	15mm	810	1909.8	25.82	26.00	1.042	0.01	0.321	0.335
	GSM1900	GPRS (4 Tx slots)	Back	15mm	810	1909.8	25.82	26.00	1.042	0.02	0.099	0.103

**<WCDMA SAR>**

Plot No.	Band	Mode	Test Position	Gap (mm)	Ch.	Freq. (MHz)	Average Power (dBm)	Tune-Up Limit (dBm)	Tune-up Scaling Factor	Power Drift (dB)	Measured 1g SAR (W/kg)	Reported 1g SAR (W/kg)
34	WCDMA II	RMC 12.2Kbps	Front	15mm	9538	1907.6	23.97	24.00	1.007	0.14	0.514	0.518
	WCDMA II	RMC 12.2Kbps	Back	15mm	9538	1907.6	23.97	24.00	1.007	0.16	0.133	0.134
35	WCDMA IV	RMC 12.2Kbps	Front	15mm	1413	1732.6	23.98	24.00	1.005	0.02	0.788	0.792
	WCDMA IV	RMC 12.2Kbps	Back	15mm	1413	1732.6	23.98	24.00	1.005	0.08	0.109	0.110
36	WCDMA V	RMC 12.2Kbps	Front	15mm	4182	836.4	23.75	24.00	1.059	0.02	0.245	0.260
	WCDMA V	RMC 12.2Kbps	Back	15mm	4182	836.4	23.75	24.00	1.059	0.02	0.193	0.204

**<FDD LTE SAR>**

Plot No.	Band	BW (MHz)	Modulation	RB Size	RB offset	Test Position	Gap (mm)	Ch.	Freq. (MHz)	Average Power (dBm)	Tune-Up Limit (dBm)	Tune-up Scaling Factor	Power Drift (dB)	Measured 1g SAR (W/kg)	Reported 1g SAR (W/kg)
37	LTE Band 2	20M	QPSK	1	49	Front	15mm	19100	1900	23.85	24.00	1.035	-0.12	0.395	0.409
	LTE Band 2	20M	QPSK	50	50	Front	15mm	19100	1900	22.79	23.00	1.050	0.03	0.310	0.325
	LTE Band 2	20M	QPSK	1	49	Back	15mm	19100	1900	23.85	24.00	1.035	0.1	0.106	0.110
	LTE Band 2	20M	QPSK	50	50	Back	15mm	19100	1900	22.79	23.00	1.050	-0.01	0.084	0.088
38	LTE Band 4	20M	QPSK	1	0	Front	15mm	20175	1732.5	23.89	24.00	1.026	-0.1	0.776	0.796
	LTE Band 4	20M	QPSK	50	0	Front	15mm	20175	1732.5	22.89	23.00	1.026	0	0.641	0.657
	LTE Band 4	20M	QPSK	1	0	Back	15mm	20175	1732.5	23.89	24.00	1.026	0.03	0.129	0.132
	LTE Band 4	20M	QPSK	50	0	Back	15mm	20175	1732.5	22.89	23.00	1.026	-0.03	0.099	0.102
39	LTE Band 7	20M	QPSK	1	0	Front	15mm	20850	2510	23.36	24.00	1.159	-0.05	0.212	0.246
	LTE Band 7	20M	QPSK	50	0	Front	15mm	20850	2510	22.06	23.00	1.242	0.06	0.188	0.233
	LTE Band 7	20M	QPSK	1	0	Back	15mm	20850	2510	23.36	24.00	1.159	0.01	0.174	0.202
	LTE Band 7	20M	QPSK	50	0	Back	15mm	20850	2510	22.06	23.00	1.242	0.08	0.146	0.181
40	LTE Band 12	10M	QPSK	1	25	Front	15mm	23095	707.5	23.94	24.00	1.014	0.09	0.197	0.200
	LTE Band 12	10M	QPSK	25	12	Front	15mm	23095	707.5	22.88	23.00	1.028	-0.07	0.157	0.161
	LTE Band 12	10M	QPSK	1	25	Back	15mm	23095	707.5	23.94	24.00	1.014	-0.18	0.125	0.127
	LTE Band 12	10M	QPSK	25	12	Back	15mm	23095	707.5	22.88	23.00	1.028	0.04	0.101	0.104

**<TDD LTE SAR>**

Plot No.	Band	BW (MHz)	Modulation	RB Size	RB offset	Test Position	Gap (mm)	Ch.	Freq. (MHz)	Average Power (dBm)	Tune-Up Limit (dBm)	Tune-up Scaling Factor	Duty Cycle %	Duty Cycle Scaling Factor	Power Drift (dB)	Measured 1g SAR (W/kg)	Reported 1g SAR (W/kg)
41	LTE Band 38	20M	QPSK	1	0	Front	15mm	38000	2595	23.50	24.00	1.122	62.9	1.006	-0.1	0.098	0.111
	LTE Band 38	20M	QPSK	50	0	Front	15mm	38000	2595	22.68	23.00	1.076	62.9	1.006	-0.01	0.081	0.088
	LTE Band 38	20M	QPSK	1	0	Back	15mm	38000	2595	23.50	24.00	1.122	62.9	1.006	-0.1	0.052	0.059
	LTE Band 38	20M	QPSK	50	0	Back	15mm	38000	2595	22.68	23.00	1.076	62.9	1.006	-0.05	0.043	0.047



<WLAN SAR>

Plot No.	Band	Mode	Test Position	Gap (mm)	Ch.	Freq. (MHz)	Average Power (dBm)	Tune-Up Limit (dBm)	Tune-up Scaling Factor	Duty Cycle %	Duty Cycle Scaling Factor	Power Drift (dB)	Measured 1g SAR (W/kg)	Reported 1g SAR (W/kg)
42	WLAN2.4GHz	802.11b 1Mbps	Front	15mm	1	2412	18.37	18.5	1.032	97.16	1.029	0.09	0.058	0.062
	WLAN2.4GHz	802.11b 1Mbps	Back	15mm	1	2412	18.37	18.5	1.032	97.16	1.029	-0.06	0.028	0.030
43	WLAN5GHz	802.11n-HT40 MCS0	Front	15mm	62	5310	14.21	14.50	1.069	86.49	1.156	0.15	0.021	0.026
	WLAN5GHz	802.11n-HT40 MCS0	Back	15mm	62	5310	14.21	14.50	1.069	86.49	1.156	-0.11	0.001	0.001
44	WLAN5GHz	802.11n-HT40 MCS0	Front	15mm	102	5510	14.17	14.50	1.079	86.49	1.156	0.14	0.005	0.006
	WLAN5GHz	802.11n-HT40 MCS0	Back	15mm	102	5510	14.17	14.50	1.079	86.49	1.156	-0.16	0.001	0.001
45	WLAN5GHz	802.11n-HT40 MCS0	Front	15mm	151	5755	14.34	14.50	1.037	86.49	1.156	0.17	0.001	0.001
	WLAN5GHz	802.11n-HT40 MCS0	Back	15mm	151	5755	14.34	14.50	1.037	86.49	1.156	-0.13	0.001	0.001

**15.5 Repeated SAR Measurement**

No.	Band	Mode	Test Position	Gap (mm)	Ch.	Freq. (MHz)	Average Power (dBm)	Tune-Up Limit (dBm)	Tune-up Scaling Factor	Power Drift (dB)	Measured 1g SAR (W/kg)	Ratio	Reported 1g SAR (W/kg)
1st	GSM1900	GPRS (4 Tx slots)	Front	10mm	512	1850.2	25.33	26.00	1.167	-0.03	1.020		1.190
2nd	GSM1900	GPRS (4 Tx slots)	Front	10mm	512	1850.2	25.33	26.00	1.167	0.01	1.000	1.02	1.167
1st	WCDMA IV	RMC 12.2Kbps	Front	10mm	1312	1712.4	22.16	22.50	1.081	0.06	1.070		1.157
2nd	WCDMA IV	RMC 12.2Kbps	Front	10mm	1312	1712.4	22.16	22.50	1.081	0.1	1.060	1.01	1.146

No.	Band	Mode	Test Position	Gap (mm)	Ch.	Freq. (MHz)	Average Power (dBm)	Tune-Up Limit (dBm)	Tune-up Scaling Factor	Power Drift (dB)	Measured 10g SAR (W/kg)	Ratio	Reported 10g SAR (W/kg)
1st	WCDMA IV	RMC 12.2Kbps	Front	0mm	1513	1752.6	23.95	24.00	1.012	0.08	2.070		2.094
2nd	WCDMA IV	RMC 12.2Kbps	Front	0mm	1513	1752.6	23.95	24.00	1.012	0.18	2.040	1.01	2.064

**General Note:**

1. Per KDB 865664 D01v01r04, for each frequency band, repeated SAR measurement is required only when the measured SAR is  $\geq 0.8W/kg$ .
2. Per KDB 865664 D01v01r04, if the ratio among the repeated measurement is  $\leq 1.2$  and the measured SAR  $< 1.45W/kg$ , only one repeated measurement is required.
3. Per KDB 865664 D01v01r04, if the extremity repeated SAR is necessary, the same procedures should be adapted for measurements according to extremity and occupational exposure limits by applying a factor of 2.5 for extremity exposure and a factor of 5 for occupational exposure to the corresponding SAR thresholds.
4. The ratio is the difference in percentage between original and repeated *measured SAR*.
5. All measurement SAR result is scaled-up to account for tune-up tolerance and is compliant.

**16. Simultaneous Transmission Analysis**

NO.	Simultaneous Transmission Configurations	Portable Handset			
		Head	Body-worn	Hotspot	Product Specific
1.	GSM Voice + WLAN2.4GHz	Yes	Yes		Yes
2.	GPRS/EDGE + WLAN2.4GHz	Yes	Yes	Yes	Yes
3.	WCDMA + WLAN2.4GHz	Yes	Yes	Yes	Yes
4.	LTE + WLAN2.4GHz	Yes	Yes	Yes	Yes
5.	GSM Voice + Bluetooth		Yes		Yes
6.	GPRS/EDGE + Bluetooth		Yes		Yes
7.	WCDMA+ Bluetooth		Yes		Yes
8.	LTE + Bluetooth		Yes		Yes
9.	GSM Voice + WLAN5GHz	Yes	Yes		Yes
10.	GPRS/EDGE + WLAN5GHz	Yes	Yes	Yes	Yes
11.	WCDMA + WLAN5GHz	Yes	Yes	Yes	Yes
12.	LTE + WLAN5GHz	Yes	Yes	Yes	Yes

**General Note:**

1. This device 2.4GHz / 5.2GHz / 5.8GHz WLAN support Hotspot operation.
2. The worst case WLAN reported SAR for each configuration was used for SAR summation. Therefore, the following summations represent the absolute worst cases for simultaneous transmission with WLAN.
3. WLAN and Bluetooth share the same antenna, and cannot transmit simultaneously.
4. EUT will choose either WLAN 2.4GHz or WLAN 5GHz according to the network signal condition; therefore, 2.4GHz WLAN and 5GHz WLAN will not operate simultaneously at any moment.
5. The Scaled SAR summation is calculated based on the same configuration and test position.
6. Per KDB 447498 D01v06, simultaneous transmission SAR is compliant if,
  - i) Scalar SAR summation < 1.6W/kg.
  - ii)  $SPLSR = (SAR1 + SAR2)^{1.5} / (\text{min. separation distance, mm})$ , and the peak separation distance is determined from the square root of  $[(x1-x2)^2 + (y1-y2)^2 + (z1-z2)^2]$ , where (x1, y1, z1) and (x2, y2, z2) are the coordinates of the extrapolated peak SAR locations in the zoom scan.
  - iii) If  $SPLSR \leq 0.04$ , simultaneously transmission SAR measurement is not necessary.
  - iv) Simultaneously transmission SAR measurement, and the reported multi-band SAR < 1.6W/kg.
7. For simultaneous transmission analysis, Bluetooth SAR is estimated per KDB 447498 D01v06 based on the formula below.
  - i)  $(\text{max. power of channel, including tune-up tolerance, mW}) / (\text{min. test separation distance, mm}) \cdot [\sqrt{f(\text{GHz})} / x] \text{ W/kg}$  for test separation distances  $\leq 50 \text{ mm}$ ; where  $x = 7.5$  for 1-g SAR, and  $x = 18.75$  for 10-g SAR.
  - ii) When the minimum separation distance is < 5mm, the distance is used 5mm to determine SAR test exclusion.
  - iii) 0.4 W/kg for 1-g SAR and 1.0 W/kg for 10-g SAR, when the test separation distances is > 50 mm.

Bluetooth Max Power	Exposure Position	Body worn
	Test separation	15 mm
8dBm	Estimated SAR (W/kg)	0.084 W/kg



**16.1 Head Exposure Conditions**

WWAN Band		Exposure Position	1	2	3	1+2 Summed 1g SAR (W/kg)	1+3 Summed 1g SAR (W/kg)
			WWAN 1g SAR (W/kg)	2.4GHz WLAN 1g SAR (W/kg)	5GHz WLAN 1g SAR (W/kg)		
GSM	GSM850	Right Cheek	0.188	0.795	0.416	<b>0.983</b>	<b>0.604</b>
		Right Tilted	0.091	0.580	0.407	<b>0.671</b>	<b>0.498</b>
		Left Cheek	0.180	0.235	0.211	<b>0.415</b>	<b>0.391</b>
		Left Tilted	0.106	0.183	0.225	<b>0.289</b>	<b>0.331</b>
	GSM1900	Right Cheek	0.085	0.795	0.416	<b>0.880</b>	<b>0.501</b>
		Right Tilted	0.068	0.580	0.407	<b>0.648</b>	<b>0.475</b>
		Left Cheek	0.182	0.235	0.211	<b>0.417</b>	<b>0.393</b>
		Left Tilted	0.052	0.183	0.225	<b>0.235</b>	<b>0.277</b>
WCDMA	WCDMA II	Right Cheek	0.143	0.795	0.416	<b>0.938</b>	<b>0.559</b>
		Right Tilted	0.107	0.580	0.407	<b>0.687</b>	<b>0.514</b>
		Left Cheek	0.285	0.235	0.211	<b>0.520</b>	<b>0.496</b>
		Left Tilted	0.082	0.183	0.225	<b>0.265</b>	<b>0.307</b>
	WCDMA IV	Right Cheek	0.074	0.795	0.416	<b>0.869</b>	<b>0.490</b>
		Right Tilted	0.068	0.580	0.407	<b>0.648</b>	<b>0.475</b>
		Left Cheek	0.157	0.235	0.211	<b>0.392</b>	<b>0.368</b>
		Left Tilted	0.053	0.183	0.225	<b>0.236</b>	<b>0.278</b>
	WCDMA V	Right Cheek	0.209	0.795	0.416	<b>1.004</b>	<b>0.625</b>
		Right Tilted	0.096	0.580	0.407	<b>0.676</b>	<b>0.503</b>
		Left Cheek	0.194	0.235	0.211	<b>0.429</b>	<b>0.405</b>
		Left Tilted	0.119	0.183	0.225	<b>0.302</b>	<b>0.344</b>
LTE	LTE Band 2	Right Cheek	0.107	0.795	0.416	<b>0.902</b>	<b>0.523</b>
		Right Tilted	0.081	0.580	0.407	<b>0.661</b>	<b>0.488</b>
		Left Cheek	0.226	0.235	0.211	<b>0.461</b>	<b>0.437</b>
		Left Tilted	0.090	0.183	0.225	<b>0.273</b>	<b>0.315</b>
	LTE Band 4	Right Cheek	0.076	0.795	0.416	<b>0.871</b>	<b>0.492</b>
		Right Tilted	0.061	0.580	0.407	<b>0.641</b>	<b>0.468</b>
		Left Cheek	0.151	0.235	0.211	<b>0.386</b>	<b>0.362</b>
		Left Tilted	0.050	0.183	0.225	<b>0.233</b>	<b>0.275</b>
	LTE Band 7	Right Cheek	0.171	0.795	0.416	<b>0.966</b>	<b>0.587</b>
		Right Tilted	0.038	0.580	0.407	<b>0.618</b>	<b>0.445</b>
		Left Cheek	0.136	0.235	0.211	<b>0.371</b>	<b>0.347</b>
		Left Tilted	0.083	0.183	0.225	<b>0.266</b>	<b>0.308</b>
	LTE Band 12	Right Cheek	0.056	0.795	0.416	<b>0.851</b>	<b>0.472</b>
		Right Tilted	0.027	0.580	0.407	<b>0.607</b>	<b>0.434</b>
		Left Cheek	0.071	0.235	0.211	<b>0.306</b>	<b>0.282</b>
		Left Tilted	0.033	0.183	0.225	<b>0.216</b>	<b>0.258</b>
	LTE Band 38	Right Cheek	0.080	0.795	0.416	<b>0.875</b>	<b>0.496</b>
		Right Tilted	0.017	0.580	0.407	<b>0.597</b>	<b>0.424</b>
		Left Cheek	0.053	0.235	0.211	<b>0.288</b>	<b>0.264</b>
		Left Tilted	0.035	0.183	0.225	<b>0.218</b>	<b>0.260</b>



**16.2 Hotspot Exposure Conditions**

WWAN Band		Exposure Position	1	2	3	1+2 Summed 1g SAR (W/kg)	1+3 Summed 1g SAR (W/kg)
			WWAN 1g SAR (W/kg)	2.4GHz WLAN 1g SAR (W/kg)	5GHz WLAN 1g SAR (W/kg)		
GSM	GSM850	Front	0.364	0.184	0.077	0.548	0.441
		Back	0.211	0.055	0.008	0.266	0.219
		Left side	0.138	0.056	0.020	0.194	0.158
		Right side	0.256			0.256	0.256
		Top side		0.061	0.046	0.061	0.046
		Bottom side	0.159			0.159	0.159
	GSM1900	Front	1.190	0.184	0.077	1.374	1.267
		Back	0.169	0.055	0.008	0.224	0.177
		Left side	0.266	0.056	0.020	0.322	0.286
		Right side	0.010			0.010	0.010
		Top side		0.061	0.046	0.061	0.046
		Bottom side	0.712			0.712	0.712
WCDMA	WCDMA II	Front	0.933	0.184	0.077	1.117	1.010
		Back	0.183	0.055	0.008	0.238	0.191
		Left side	0.315	0.056	0.020	0.371	0.335
		Right side	0.015			0.015	0.015
		Top side		0.061	0.046	0.061	0.046
		Bottom side	0.913			0.913	0.913
	WCDMA IV	Front	1.157	0.184	0.077	1.341	1.234
		Back	0.149	0.055	0.008	0.204	0.157
		Left side	0.115	0.056	0.020	0.171	0.135
		Right side	0.009			0.009	0.009
		Top side		0.061	0.046	0.061	0.046
		Bottom side	1.031			1.031	1.031
	WCDMA V	Front	0.396	0.184	0.077	0.580	0.473
		Back	0.224	0.055	0.008	0.279	0.232
		Left side	0.163	0.056	0.020	0.219	0.183
		Right side	0.292			0.292	0.292
		Top side		0.061	0.046	0.061	0.046
		Bottom side	0.187			0.187	0.187



WWAN Band		Exposure Position	1	2	3	1+2 Summed 1g SAR (W/kg)	1+3 Summed 1g SAR (W/kg)
			WWAN 1g SAR (W/kg)	2.4GHz WLAN 1g SAR (W/kg)	5GHz WLAN 1g SAR (W/kg)		
LTE	LTE Band 2	Front	0.821	0.184	0.077	<b>1.005</b>	<b>0.898</b>
		Back	0.146	0.055	0.008	<b>0.201</b>	<b>0.154</b>
		Left side	0.284	0.056	0.020	<b>0.340</b>	<b>0.304</b>
		Right side	0.015			<b>0.015</b>	<b>0.015</b>
		Top side		0.061	0.046	<b>0.061</b>	<b>0.046</b>
		Bottom side	0.789			<b>0.789</b>	<b>0.789</b>
	LTE Band 4	Front	1.092	0.184	0.077	<b>1.276</b>	<b>1.169</b>
		Back	0.142	0.055	0.008	<b>0.197</b>	<b>0.150</b>
		Left side	0.115	0.056	0.020	<b>0.171</b>	<b>0.135</b>
		Right side	0.015			<b>0.015</b>	<b>0.015</b>
		Top side		0.061	0.046	<b>0.061</b>	<b>0.046</b>
		Bottom side	1.028			<b>1.028</b>	<b>1.028</b>
	LTE Band 7	Front	0.464	0.184	0.077	<b>0.648</b>	<b>0.541</b>
		Back	0.379	0.055	0.008	<b>0.434</b>	<b>0.387</b>
		Left side	0.089	0.056	0.020	<b>0.145</b>	<b>0.109</b>
		Right side	0.417			<b>0.417</b>	<b>0.417</b>
		Top side		0.061	0.046	<b>0.061</b>	<b>0.046</b>
		Bottom side	0.445			<b>0.445</b>	<b>0.445</b>
	LTE Band 12	Front	0.300	0.184	0.077	<b>0.484</b>	<b>0.377</b>
		Back	0.181	0.055	0.008	<b>0.236</b>	<b>0.189</b>
		Left side	0.132	0.056	0.020	<b>0.188</b>	<b>0.152</b>
		Right side	0.144			<b>0.144</b>	<b>0.144</b>
		Top side		0.061	0.046	<b>0.061</b>	<b>0.046</b>
		Bottom side	0.103			<b>0.103</b>	<b>0.103</b>
	LTE Band 38	Front	0.218	0.184	0.077	<b>0.402</b>	<b>0.295</b>
		Back	0.114	0.055	0.008	<b>0.169</b>	<b>0.122</b>
		Left side	0.036	0.056	0.020	<b>0.092</b>	<b>0.056</b>
		Right side	0.146			<b>0.146</b>	<b>0.146</b>
		Top side		0.061	0.046	<b>0.061</b>	<b>0.046</b>
		Bottom side	0.154			<b>0.154</b>	<b>0.154</b>





**16.3 Product Specific**

WWAN Band		1	2	3	1+2 Summed 10g SAR (W/kg)	1+3 Summed 10g SAR (W/kg)
		WWAN	2.4GHz WLAN	5GHz WLAN		
		10g SAR (W/kg)	10g SAR (W/kg)	10g SAR (W/kg)		
WCDMA	WCDMA IV	2.128	-	0.184	<b>2.128</b>	<b>2.312</b>
LTE	LTE Band 4	1.969	-	0.184	<b>1.969</b>	<b>2.153</b>

**General Note:**

1. The worst case 5GHz WLAN results are taking from 5.3GHz (U-NII-2A) and 5.5GHz (U-NII-2C) perform product specific simultaneous transmission analysis.
2. According to KDB 648474 D04v01r03, for 2.4GHz WLAN SAR (“-”) was excluded, due to Body SAR was < 1.2W/kg.

**16.4 Body-Worn Accessory Exposure Conditions**

WWAN Band		Exposure Position	1	2	3	4	1+2 Summed 1g SAR (W/kg)	1+3 Summed 1g SAR (W/kg)	1+4 Summed 1g SAR (W/kg)
			WWAN	2.4GHz WLAN	5GHz WLAN	Bluetooth			
			1g SAR (W/kg)	1g SAR (W/kg)	1g SAR (W/kg)	Estimated 1g SAR (W/kg)			
GSM	GSM850	Front	0.236	0.062	0.026	0.084	<b>0.298</b>	<b>0.262</b>	<b>0.320</b>
		Back	0.190	0.030	0.001	0.084	<b>0.220</b>	<b>0.191</b>	<b>0.274</b>
	GSM1900	Front	0.335	0.062	0.026	0.084	<b>0.397</b>	<b>0.361</b>	<b>0.419</b>
		Back	0.103	0.030	0.001	0.084	<b>0.133</b>	<b>0.104</b>	<b>0.187</b>
WCDMA	WCDMA II	Front	0.518	0.062	0.026	0.084	<b>0.580</b>	<b>0.544</b>	<b>0.602</b>
		Back	0.134	0.030	0.001	0.084	<b>0.164</b>	<b>0.135</b>	<b>0.218</b>
	WCDMA IV	Front	0.792	0.062	0.026	0.084	<b>0.854</b>	<b>0.818</b>	<b>0.876</b>
		Back	0.110	0.030	0.001	0.084	<b>0.140</b>	<b>0.111</b>	<b>0.194</b>
	WCDMA V	Front	0.260	0.062	0.026	0.084	<b>0.322</b>	<b>0.286</b>	<b>0.344</b>
		Back	0.204	0.030	0.001	0.084	<b>0.234</b>	<b>0.205</b>	<b>0.288</b>
LTE	LTE Band 2	Front	0.409	0.062	0.026	0.084	<b>0.471</b>	<b>0.435</b>	<b>0.493</b>
		Back	0.110	0.030	0.001	0.084	<b>0.140</b>	<b>0.111</b>	<b>0.194</b>
	LTE Band 4	Front	0.796	0.062	0.026	0.084	<b>0.858</b>	<b>0.822</b>	<b>0.880</b>
		Back	0.132	0.030	0.001	0.084	<b>0.162</b>	<b>0.133</b>	<b>0.216</b>
	LTE Band 7	Front	0.246	0.062	0.026	0.084	<b>0.308</b>	<b>0.272</b>	<b>0.330</b>
		Back	0.202	0.030	0.001	0.084	<b>0.232</b>	<b>0.203</b>	<b>0.286</b>
	LTE Band 12	Front	0.200	0.062	0.026	0.084	<b>0.262</b>	<b>0.226</b>	<b>0.284</b>
		Back	0.127	0.030	0.001	0.084	<b>0.157</b>	<b>0.128</b>	<b>0.211</b>
	LTE Band 38	Front	0.111	0.062	0.026	0.084	<b>0.173</b>	<b>0.137</b>	<b>0.195</b>
		Back	0.059	0.030	0.001	0.084	<b>0.089</b>	<b>0.060</b>	<b>0.143</b>

**Test Engineer :** Nick Yu San Lin Galen Chang Iran Wang Tommy Chen Poa Pan and Thomas Wang

## 17. Uncertainty Assessment

The component of uncertainty may generally be categorized according to the methods used to evaluate them. The evaluation of uncertainty by the statistical analysis of a series of observations is termed a Type A evaluation of uncertainty. The evaluation of uncertainty by means other than the statistical analysis of a series of observation is termed a Type B evaluation of uncertainty. Each component of uncertainty, however evaluated, is represented by an estimated standard deviation, termed standard uncertainty, which is determined by the positive square root of the estimated variance.

A Type A evaluation of standard uncertainty may be based on any valid statistical method for treating data. This includes calculating the standard deviation of the mean of a series of independent observations; using the method of least squares to fit a curve to the data in order to estimate the parameter of the curve and their standard deviations; or carrying out an analysis of variance in order to identify and quantify random effects in certain kinds of measurement.

A type B evaluation of standard uncertainty is typically based on scientific judgment using all of the relevant information available. These may include previous measurement data, experience, and knowledge of the behavior and properties of relevant materials and instruments, manufacture’s specification, data provided in calibration reports and uncertainties assigned to reference data taken from handbooks. Broadly speaking, the uncertainty is either obtained from an outdoor source or obtained from an assumed distribution, such as the normal distribution, rectangular or triangular distributions indicated in table below.

Uncertainty Distributions	Normal	Rectangular	Triangular	U-Shape
Multi-plying Factor <sup>(a)</sup>	1/k <sup>(b)</sup>	1/√3	1/√6	1/√2

(a) standard uncertainty is determined as the product of the multiplying factor and the estimated range of variations in the measured quantity

(b)  $\kappa$  is the coverage factor

**Table 17.1. Standard Uncertainty for Assumed Distribution**

The combined standard uncertainty of the measurement result represents the estimated standard deviation of the result. It is obtained by combining the individual standard uncertainties of both Type A and Type B evaluation using the usual “root-sum-squares” (RSS) methods of combining standard deviations by taking the positive square root of the estimated variances.

Expanded uncertainty is a measure of uncertainty that defines an interval about the measurement result within which the measured value is confidently believed to lie. It is obtained by multiplying the combined standard uncertainty by a coverage factor. Typically, the coverage factor ranges from 2 to 3. Using a coverage factor allows the true value of a measured quantity to be specified with a defined probability within the specified uncertainty range. For purpose of this document, a coverage factor two is used, which corresponds to confidence interval of about 95 %. The DASY uncertainty Budget is shown in the following tables.



Error Description	Uncertainty Value (±%)	Probability	Divisor	(Ci) 1g	(Ci) 10g	Standard Uncertainty (1g) (±%)	Standard Uncertainty (10g) (±%)
<b>Measurement System</b>							
Probe Calibration	6.00	N	1	1	1	6.0	6.0
Axial Isotropy	4.70	R	1.732	0.7	0.7	1.9	1.9
Hemispherical Isotropy	9.60	R	1.732	0.7	0.7	3.9	3.9
Boundary Effects	1.00	R	1.732	1	1	0.6	0.6
Linearity	4.70	R	1.732	1	1	2.7	2.7
System Detection Limits	1.00	R	1.732	1	1	0.6	0.6
Modulation Response	4.68	R	1.732	1	1	2.7	2.7
Readout Electronics	0.30	N	1	1	1	0.3	0.3
Response Time	0.00	R	1.732	1	1	0.0	0.0
Integration Time	2.60	R	1.732	1	1	1.5	1.5
RF Ambient Noise	3.00	R	1.732	1	1	1.7	1.7
RF Ambient Reflections	3.00	R	1.732	1	1	1.7	1.7
Probe Positioner	0.40	R	1.732	1	1	0.2	0.2
Probe Positioning	2.90	R	1.732	1	1	1.7	1.7
Max. SAR Eval.	2.00	R	1.732	1	1	1.2	1.2
<b>Test Sample Related</b>							
Device Positioning	3.03	N	1	1	1	3.0	3.0
Device Holder	3.60	N	1	1	1	3.6	3.6
Power Drift	5.00	R	1.732	1	1	2.9	2.9
Power Scaling	0.00	R	1.732	1	1	0.0	0.0
<b>Phantom and Setup</b>							
Phantom Uncertainty	6.10	R	1.732	1	1	3.5	3.5
SAR correction	0.00	R	1.732	1	0.84	0.0	0.0
Liquid Conductivity Repeatability	0.03	N	1	0.78	0.71	0.0	0.0
Liquid Conductivity (target)	5.00	R	1.732	0.78	0.71	2.3	2.0
Liquid Conductivity (mea.)	2.50	R	1.732	0.78	0.71	1.1	1.0
Temp. unc. - Conductivity	3.68	R	1.732	0.78	0.71	1.7	1.5
Liquid Permittivity Repeatability	0.02	N	1	0.23	0.26	0.0	0.0
Liquid Permittivity (target)	5.00	R	1.732	0.23	0.26	0.7	0.8
Liquid Permittivity (mea.)	2.50	R	1.732	0.23	0.26	0.3	0.4
Temp. unc. - Permittivity	0.84	R	1.732	0.23	0.26	0.1	0.1
<b>Combined Std. Uncertainty</b>						11.6%	11.6%
<b>Coverage Factor for 95 %</b>						K=2	K=2
<b>Expanded STD Uncertainty</b>						23.2%	23.1%

**Table 17.2. Uncertainty Budget for frequency range 300 MHz to 3 GHz**



Error Description	Uncertainty Value (±%)	Probability	Divisor	(Ci) 1g	(Ci) 10g	Standard Uncertainty (1g) (±%)	Standard Uncertainty (10g) (±%)
<b>Measurement System</b>							
Probe Calibration	7.00	N	1	1	1	7.0	7.0
Axial Isotropy	4.70	R	1.732	0.7	0.7	1.9	1.9
Hemispherical Isotropy	9.60	R	1.732	0.7	0.7	3.9	3.9
Boundary Effects	2.00	R	1.732	1	1	1.2	1.2
Linearity	4.70	R	1.732	1	1	2.7	2.7
System Detection Limits	1.00	R	1.732	1	1	0.6	0.6
Modulation Response	4.68	R	1.732	1	1	2.7	2.7
Readout Electronics	0.30	N	1	1	1	0.3	0.3
Response Time	0.00	R	1.732	1	1	0.0	0.0
Integration Time	2.60	R	1.732	1	1	1.5	1.5
RF Ambient Noise	3.00	R	1.732	1	1	1.7	1.7
RF Ambient Reflections	3.00	R	1.732	1	1	1.7	1.7
Probe Positioner	0.40	R	1.732	1	1	0.2	0.2
Probe Positioning	6.70	R	1.732	1	1	3.9	3.9
Max. SAR Eval.	4.00	R	1.732	1	1	2.3	2.3
<b>Test Sample Related</b>							
Device Positioning	3.03	N	1	1	1	3.0	3.0
Device Holder	3.60	N	1	1	1	3.6	3.6
Power Drift	5.00	R	1.732	1	1	2.9	2.9
Power Scaling	0.00	R	1.732	1	1	0.0	0.0
<b>Phantom and Setup</b>							
Phantom Uncertainty	6.60	R	1.732	1	1	3.8	3.8
SAR correction	0.00	R	1.732	1	0.84	0.0	0.0
Liquid Conductivity Repeatability	0.03	N	1	0.78	0.71	0.0	0.0
Liquid Conductivity (target)	5.00	R	1.732	0.78	0.71	2.3	2.0
Liquid Conductivity (mea.)	2.50	R	1.732	0.78	0.71	1.1	1.0
Temp. unc. - Conductivity	3.68	R	1.732	0.78	0.71	1.7	1.5
Liquid Permittivity Repeatability	0.02	N	1	0.23	0.26	0.0	0.0
Liquid Permittivity (target)	5.00	R	1.732	0.23	0.26	0.7	0.8
Liquid Permittivity (mea.)	2.50	R	1.732	0.23	0.26	0.3	0.4
Temp. unc. - Permittivity	0.84	R	1.732	0.23	0.26	0.1	0.1
<b>Combined Std. Uncertainty</b>						12.9%	12.9%
<b>Coverage Factor for 95 %</b>						K=2	K=2
<b>Expanded STD Uncertainty</b>						25.9%	25.8%

Table 17.3. Uncertainty Budget for frequency range 3 GHz to 6 GHz



## **18. References**

- [1] FCC 47 CFR Part 2 "Frequency Allocations and Radio Treaty Matters; General Rules and Regulations"
- [2] ANSI/IEEE Std. C95.1-1992, "IEEE Standard for Safety Levels with Respect to Human Exposure to Radio Frequency Electromagnetic Fields, 3 kHz to 300 GHz", September 1992
- [3] IEEE Std. 1528-2013, "IEEE Recommended Practice for Determining the Peak Spatial-Average Specific Absorption Rate (SAR) in the Human Head from Wireless Communications Devices: Measurement Techniques", Sep 2013
- [4] SPEAG DASY System Handbook
- [5] FCC KDB 248227 D01 v02r02, "SAR Guidance for IEEE 802.11 (WiFi) Transmitters", Oct 2015.
- [6] FCC KDB 447498 D01 v06, "Mobile and Portable Device RF Exposure Procedures and Equipment Authorization Policies", Oct 2015
- [7] FCC KDB 648474 D04 v01r03, "SAR Evaluation Considerations for Wireless Handsets", Oct 2015.
- [8] FCC KDB 941225 D01 v03r01, "3G SAR MEAUREMENT PROCEDURES", Oct 2015
- [9] FCC KDB 941225 D05 v02r05, "SAR Evaluation Considerations for LTE Devices", Dec 2015
- [10] FCC KDB 941225 D06 v02r01, "SAR Evaluation Procedures for Portable Devices with Wireless Router Capabilities", Oct 2015.
- [11] FCC KDB 865664 D01 v01r04, "SAR Measurement Requirements for 100 MHz to 6 GHz", Aug 2015.
- [12] FCC KDB 865664 D02 v01r02, "RF Exposure Compliance Reporting and Documentation Considerations" Oct 2015.