



Fig. 21 Occupied 26dB Bandwidth (802.11n-HT40, 5270MHz)

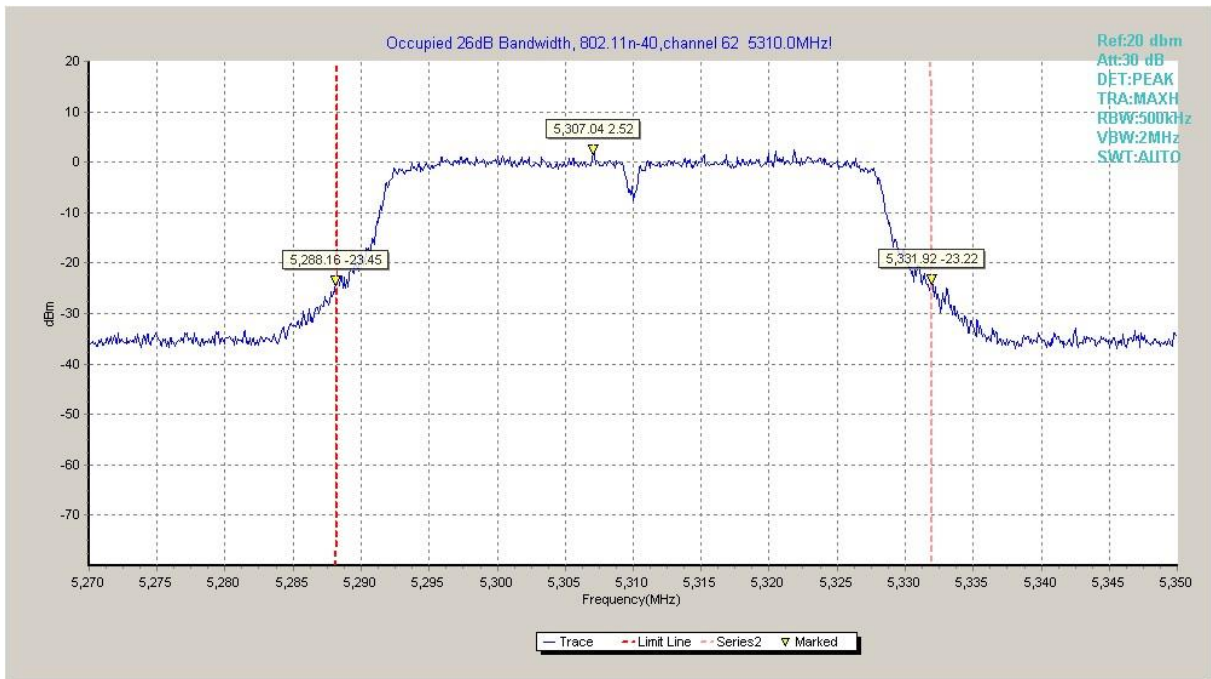


Fig. 22 Occupied 26dB Bandwidth (802.11n-HT40, 5310MHz)

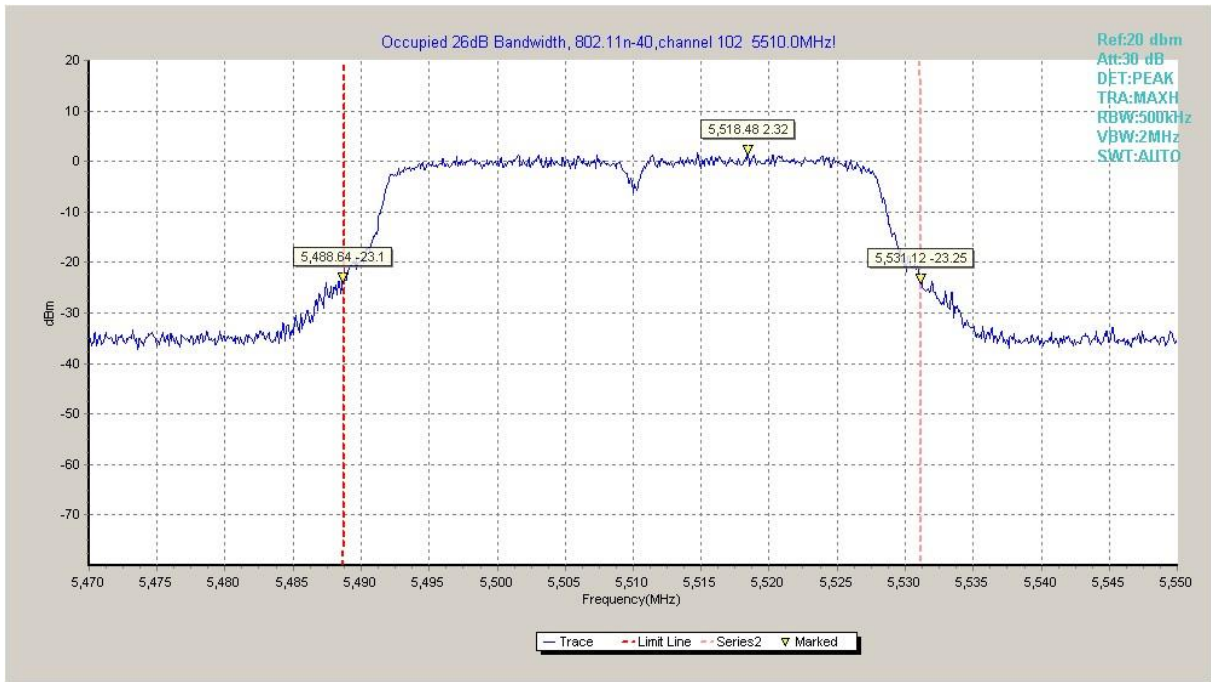


Fig. 23 Occupied 26dB Bandwidth (802. 11n-HT40, 5510MHz)

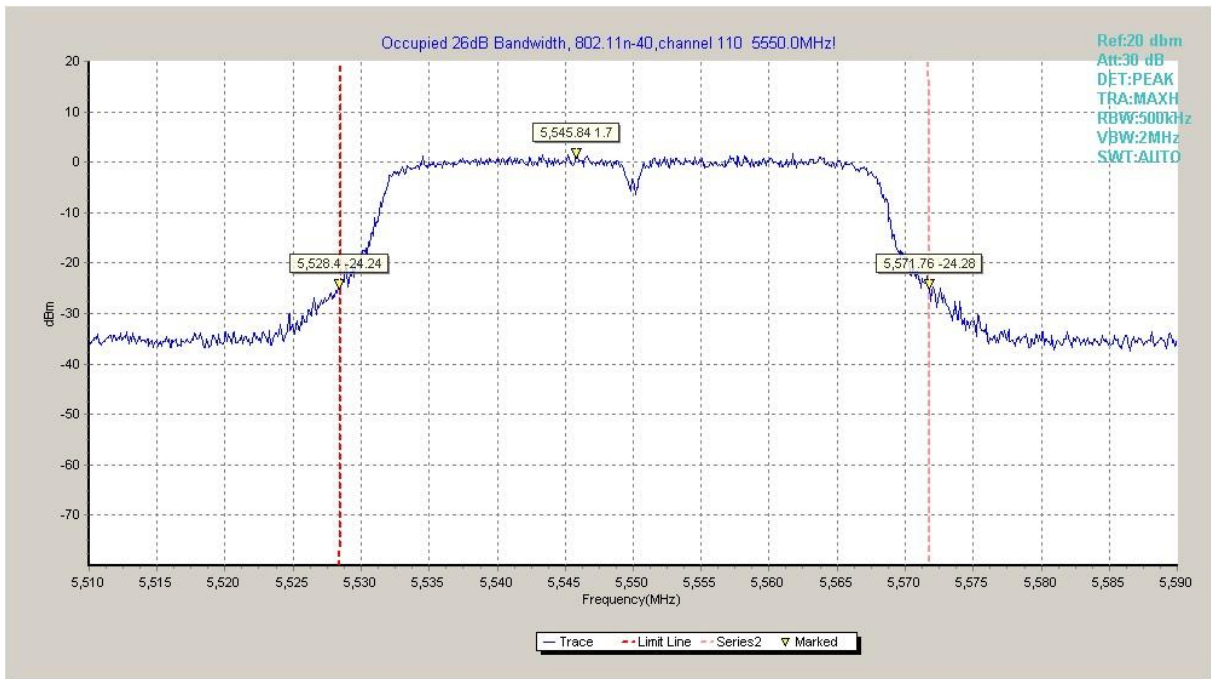


Fig. 24 Occupied 26dB Bandwidth (802. 11n-HT40, 5550MHz)

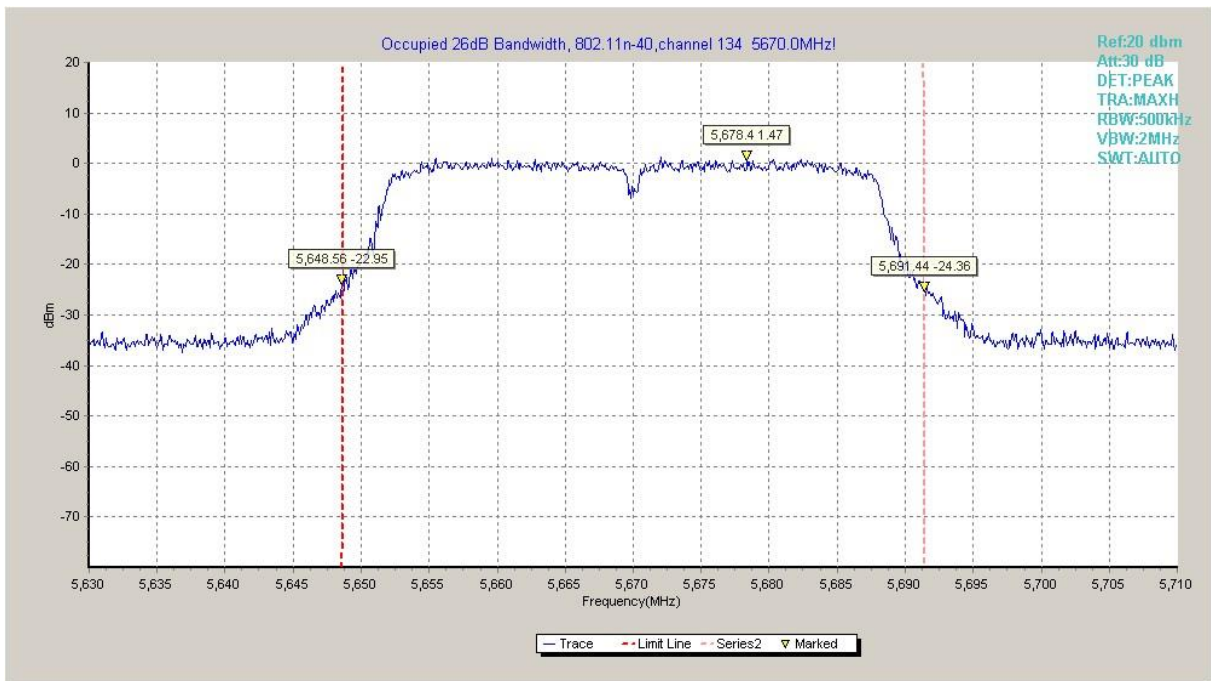


Fig. 25 Occupied 26dB Bandwidth (802. 11n-HT40, 5670MHz)

A.5. Band Edges Compliance

A5.1 Band Edges - Radiated

Measurement Limit:

Standard	Limit (dB μ V/m)	
	FCC 47 CFR Part 15.209	Peak
Average		54

The measurement is made according to KDB 789033

In addition, radiated emissions which fall in the restricted bands, as defined in § 15.205(a), must also comply with the radiated emission limits specified in § 15.209(a) (see § 15.205(c)).

Measurement Uncertainty:

Measurement Uncertainty	0.75dB
-------------------------	--------

Measurement Result:

Mode	Channel	Test Results	Conclusion
802.11a	5180 MHz	Fig.26	P
	5320 MHz	Fig.27	P
	5500 MHz	Fig.28	P
802.11n HT20	5180 MHz	Fig.29	P
	5320 MHz	Fig.30	P
	5500 MHz	Fig.31	P
802.11n HT40	5190 MHz	Fig.32	P
	5310 MHz	Fig.33	P
	5510 MHz	Fig.34	P

Conclusion: PASS

Test graphs as below:

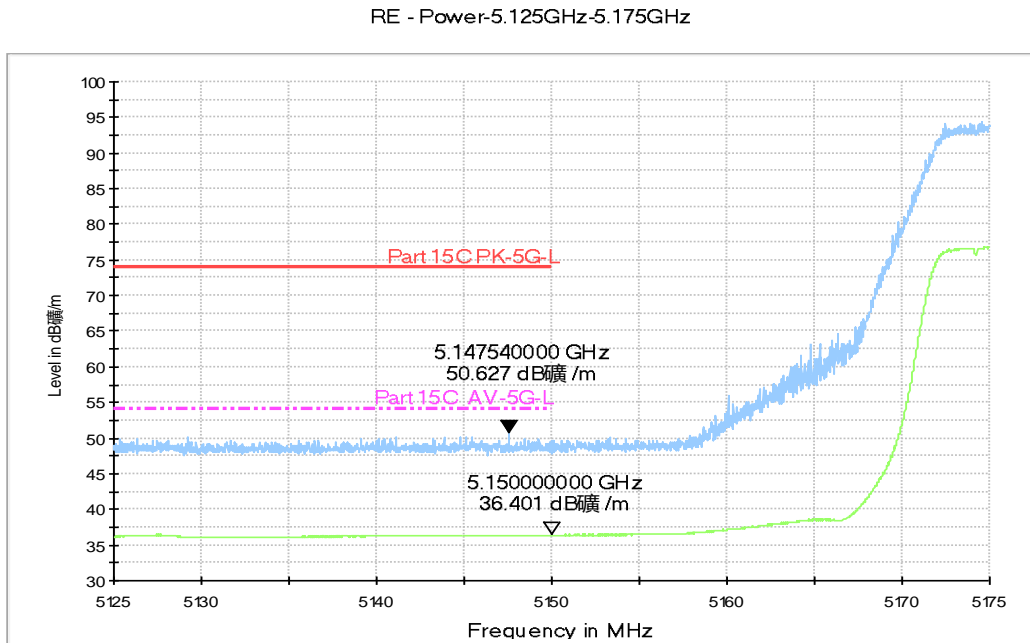


Fig. 26 Band Edges (802.11a, 5180MHz)

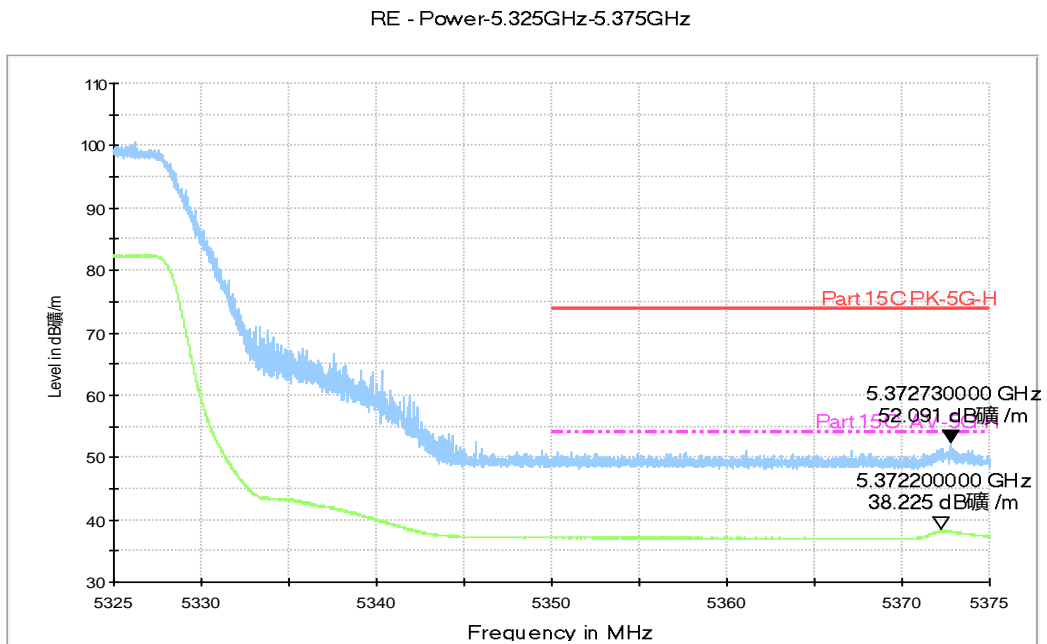


Fig. 27 Band Edges (802.11a, 5320MHz)

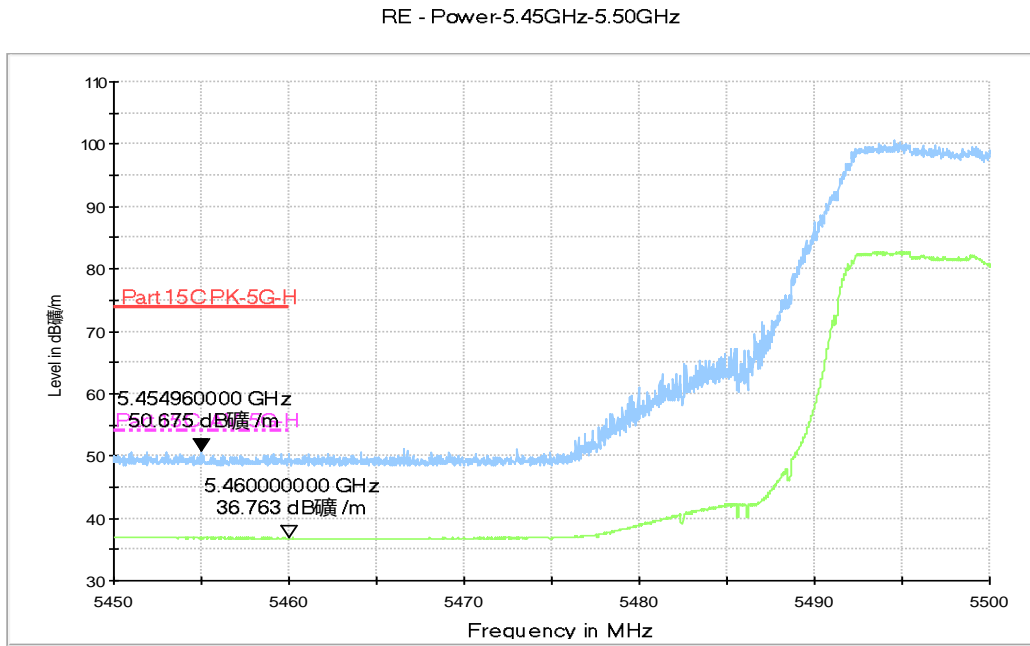


Fig. 28 Band Edges (802.11a, 5500MHz)

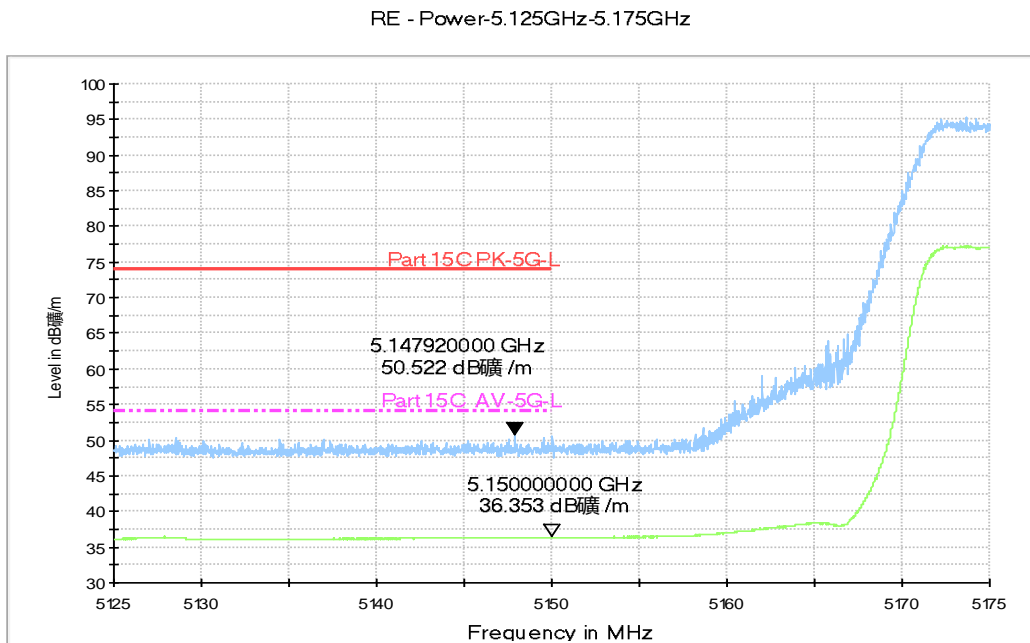


Fig. 29 Band Edges (802.11n-HT20, 5180MHz)

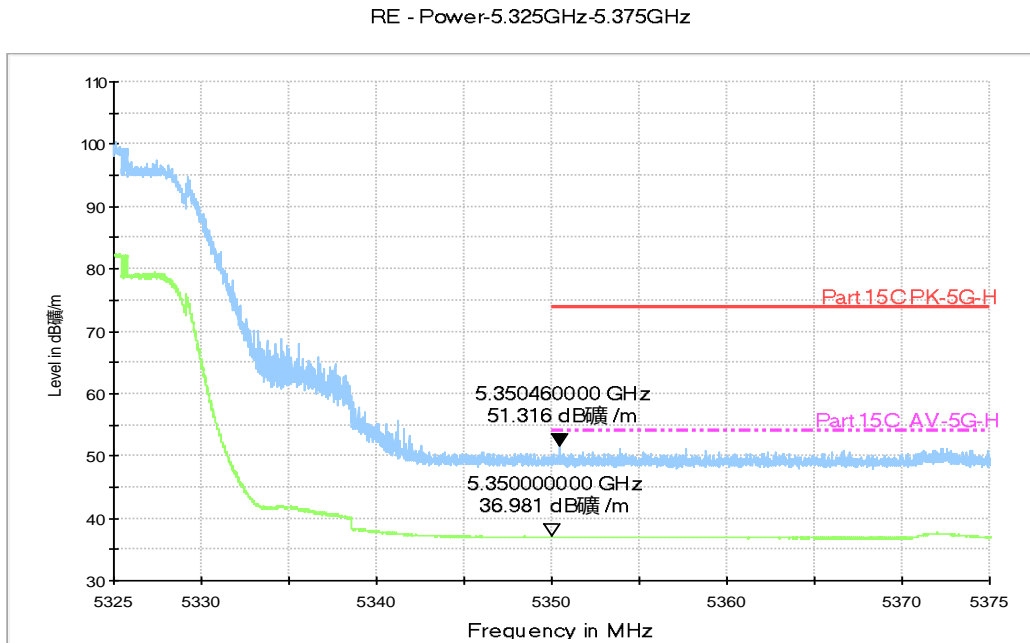


Fig. 30 Band Edges (802.11n-HT20, 5320MHz)

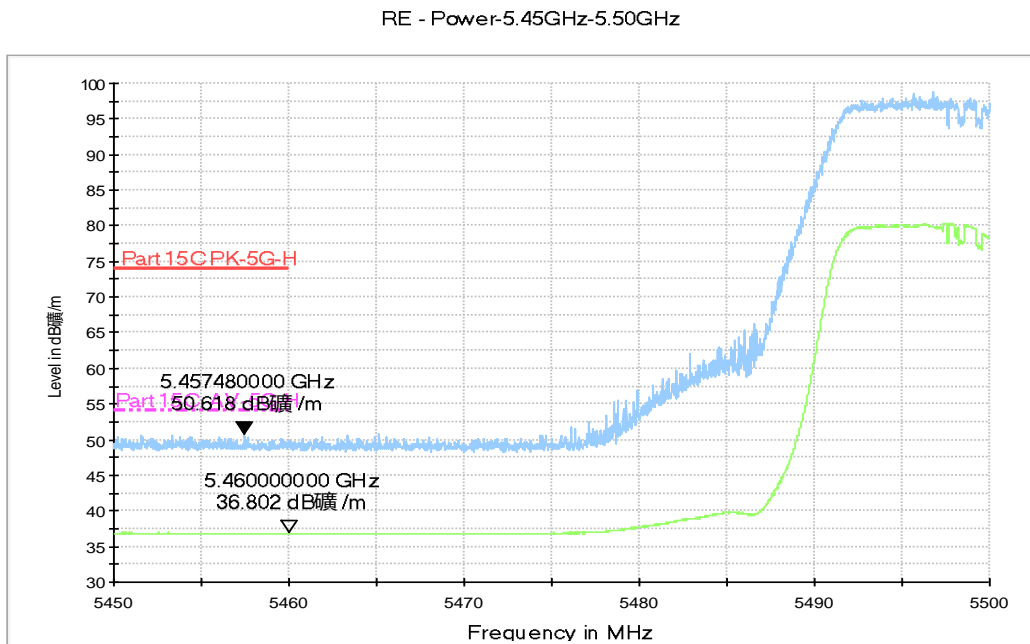


Fig. 31 Band Edges (802.11n-HT20, 5500MHz)

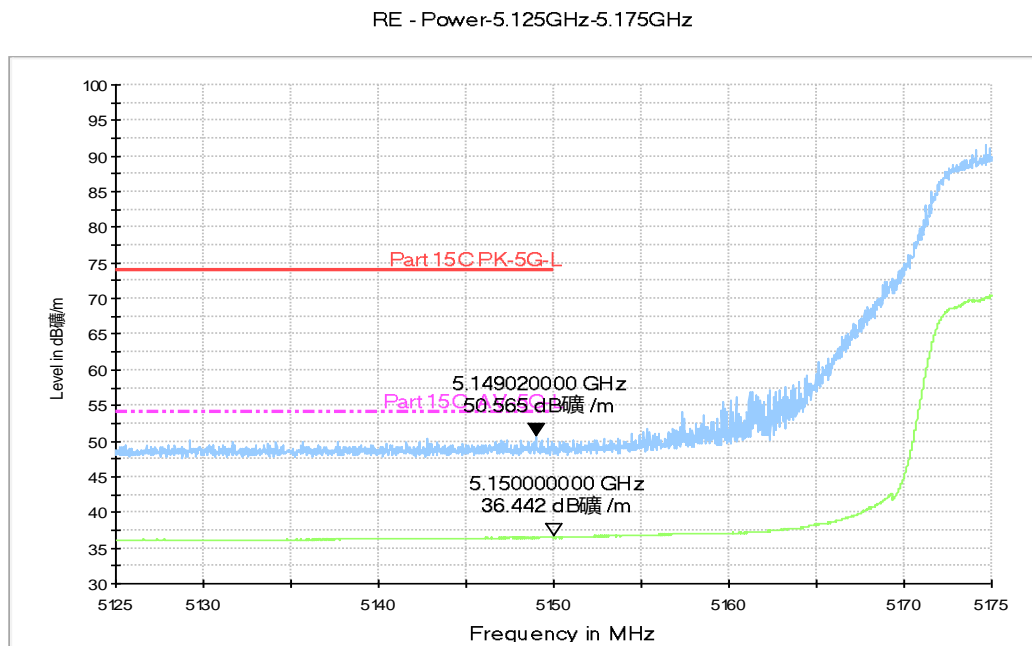


Fig. 32 Band Edges (802.11n-HT40, 5190MHz)

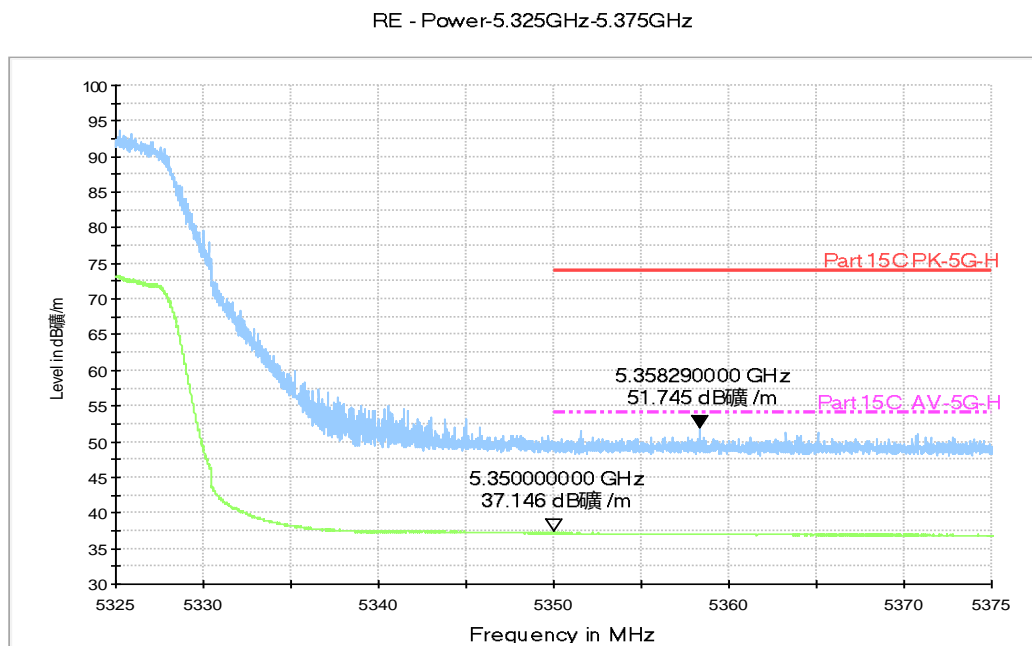


Fig. 33 Band Edges (802.11n-HT40, 5310MHz)

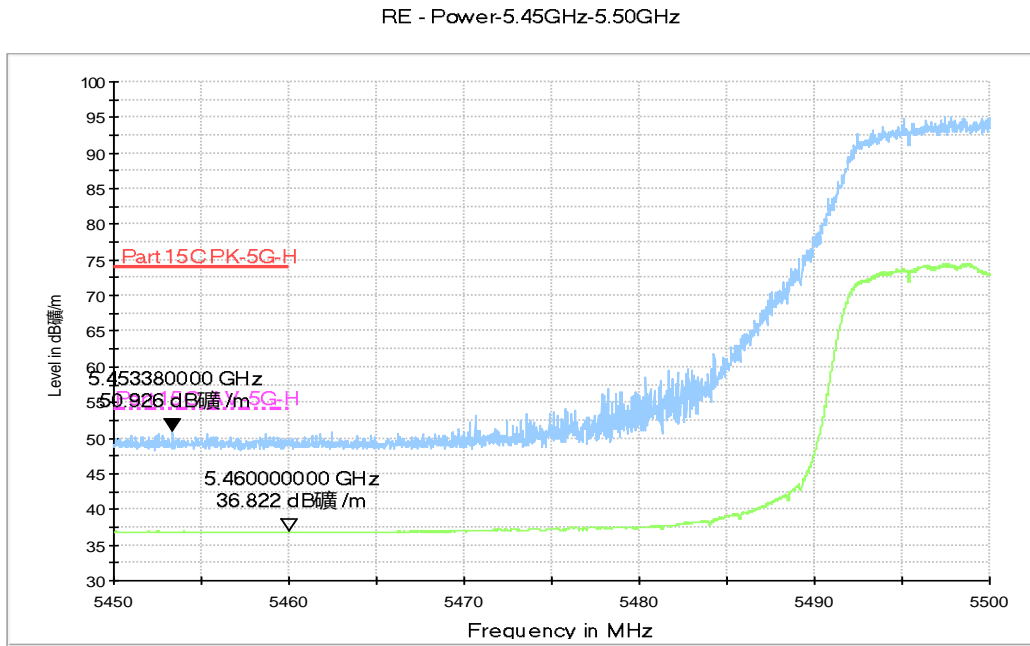


Fig. 34 Band Edges (802.11n-HT40, 5510MHz)

A.6. Transmitter Spurious Emission

Measurement Limit:

Standard	Limit
FCC 47 CFR Part 15.407	-27 dBm/MHz

The measurement is made according to KDB 789033

In addition, radiated emissions which fall in the restricted bands, as defined in § 15.205(a), must also comply with the radiated emission limits specified in § 15.209(a) (see § 15.205(c)).

Limit in restricted band:

Frequency of emission (MHz)	Field strength(dB μ V/m)	Measurement distance(m)
30-88	40.0	3
88-216	43.5	3
216-960	46.0	3
Above 960	54.0	3

Note: for frequency range below 960MHz, the limit in 15.209 is defined in 10m test distance. The limit used above is calculated from 10m to 3m

Measurement uncertainty:

Expanded measurement uncertainty for this test item is U =3.9 dB, k=2.

Measurement Results:

802.11a mode

Mode	Channel	Frequency Range	Test Results	Conclusion
802.11a	36(5180MHz)	1 GHz ~ 3 GHz	Fig.35	P
		3 GHz ~ 6 GHz	Fig.36	P
		6 GHz ~ 18 GHz	Fig.37	P
	40(5200MHz)	30 MHz ~1 GHz	Fig.38	P
		1 GHz ~ 3 GHz	Fig.39	P
		3 GHz ~ 6 GHz	Fig.40	P
		6 GHz ~ 18 GHz	Fig.41	P
		18 GHz ~ 26.5 GHz	Fig.42	P
		26.5 GHz ~ 40 GHz	Fig.43	P
	48(5240MHz)	1 GHz ~ 3 GHz	Fig.44	P
		3 GHz ~ 6 GHz	Fig.45	P
		6 GHz ~ 18 GHz	Fig.46	P
	52(5260MHz)	1 GHz ~ 3 GHz	Fig.47	P
		3 GHz ~ 6 GHz	Fig.48	P
		6 GHz ~ 18 GHz	Fig.49	P
	56(5280MHz)	30 MHz ~1 GHz	Fig.50	P
		1 GHz ~ 3 GHz	Fig.51	P
		3 GHz ~ 6 GHz	Fig.52	P
		6 GHz ~ 18 GHz	Fig.53	P
		18 GHz ~ 26.5 GHz	Fig.54	P
		26.5 GHz ~ 40 GHz	Fig.55	P
	64(5320MHz)	1 GHz ~ 3 GHz	Fig.56	P
		3 GHz ~ 6 GHz	Fig.57	P
		6 GHz ~ 18 GHz	Fig.58	P
	100(5500MHz)	1 GHz ~ 3 GHz	Fig.59	P
		3 GHz ~ 6 GHz	Fig.60	P
		6 GHz ~ 18 GHz	Fig.61	P
	120(5600MHz)	30 MHz ~1 GHz	Fig.62	P
		1 GHz ~ 3 GHz	Fig.63	P
		3 GHz ~ 6 GHz	Fig.64	P
6 GHz ~ 18 GHz		Fig.65	P	
18 GHz ~ 26.5 GHz		Fig.66	P	
26.5 GHz ~ 40 GHz		Fig.67	P	
140(5700MHz)	1 GHz ~ 3 GHz	Fig.68	P	
	3 GHz ~ 6 GHz	Fig.69	P	
	6 GHz ~ 18 GHz	Fig.70	P	

802.11n-HT20 mode

Mode	Channel	Frequency Range	Test Results	Conclusion
802.11n -HT20	36(5180MHz)	1 GHz ~ 3 GHz	Fig.71	P
		3 GHz ~ 6 GHz	Fig.72	P
		6 GHz ~ 18 GHz	Fig.73	P
	40(5200MHz)	30 MHz ~1 GHz	Fig.74	P
		1 GHz ~ 3 GHz	Fig.75	P
		3 GHz ~ 6 GHz	Fig.76	P
		6 GHz ~ 18 GHz	Fig.77	P
		18 GHz ~ 26.5 GHz	Fig.78	P
		26.5 GHz ~ 40 GHz	Fig.79	P
	48(5240MHz)	1 GHz ~ 3 GHz	Fig.80	P
		3 GHz ~ 6 GHz	Fig.81	P
		6 GHz ~ 18 GHz	Fig.82	P
	52(5260MHz)	1 GHz ~ 3 GHz	Fig.83	P
		3 GHz ~ 6 GHz	Fig.84	P
		6 GHz ~ 18 GHz	Fig.85	P
	56(5280MHz)	30 MHz ~1 GHz	Fig.86	P
		1 GHz ~ 3 GHz	Fig.87	P
		3 GHz ~ 6 GHz	Fig.88	P
		6 GHz ~ 18 GHz	Fig.89	P
		18 GHz ~ 26.5 GHz	Fig.90	P
		26.5 GHz ~ 40 GHz	Fig.91	P
	64(5320MHz)	1 GHz ~ 3 GHz	Fig.92	P
		3 GHz ~ 6 GHz	Fig.93	P
		6 GHz ~ 18 GHz	Fig.94	P
	100(5500MHz)	1 GHz ~ 3 GHz	Fig.95	P
		3 GHz ~ 6 GHz	Fig.96	P
		6 GHz ~ 18 GHz	Fig.97	P
	116(5580MHz)	30 MHz ~1 GHz	Fig.98	P
		1 GHz ~ 3 GHz	Fig.99	P
		3 GHz ~ 6 GHz	Fig.100	P
6 GHz ~ 18 GHz		Fig.101	P	
18 GHz ~ 26.5 GHz		Fig.102	P	
26.5 GHz ~ 40 GHz		Fig.103	P	
140(5700MHz)	1 GHz ~ 3 GHz	Fig.104	P	
	3 GHz ~ 6 GHz	Fig.105	P	
	6 GHz ~ 18 GHz	Fig.106	P	

802.11n-HT40 mode

Mode	Channel	Frequency Range	Test Results	Conclusion
802.11n HT40	38(5190MHz)	30 MHz ~1 GHz	Fig.107	P
		1 GHz ~ 3 GHz	Fig.108	P
		3 GHz ~ 6 GHz	Fig.109	P
		6 GHz ~ 18 GHz	Fig.110	P
		18 GHz ~ 26.5 GHz	Fig.111	P
		26.5 GHz ~ 40 GHz	Fig.112	P
	46(5230MHz)	1 GHz ~ 3 GHz	Fig.113	P
		3 GHz ~ 6 GHz	Fig.114	P
		6 GHz ~ 18 GHz	Fig.115	P
	54(5270MHz)	30 MHz ~1 GHz	Fig.116	P
		1 GHz ~ 3 GHz	Fig.117	P
		3 GHz ~ 6 GHz	Fig.118	P
		6 GHz ~ 18 GHz	Fig.119	P
		18 GHz ~ 26.5 GHz	Fig.120	P
		26.5 GHz ~ 40 GHz	Fig.121	P
	62(5310MHz)	1 GHz ~ 3 GHz	Fig.122	P
		3 GHz ~ 6 GHz	Fig.123	P
		6 GHz ~ 18 GHz	Fig.124	P
	102(5510MHz)	1 GHz ~ 3 GHz	Fig.125	P
		3 GHz ~ 6 GHz	Fig.126	P
		6 GHz ~ 18 GHz	Fig.127	P
	134(5670MHz)	1 GHz ~ 3 GHz	Fig.128	P
		3 GHz ~ 6 GHz	Fig.129	P
		6 GHz ~ 18 GHz	Fig.130	P

Conclusion: PASS

Note:

A "reference path loss" is established and the A_{Rpl} is the attenuation of "reference path loss", and including the gain of receive antenna, the gain of the preamplifier, the cable loss.

P_{Mea} is the field strength recorded from the instrument.

The measurement results are obtained as described below:

$$\text{Result} = P_{Mea} + A_{Rpl} = P_{Mea} + \text{Cable Loss} + \text{Antenna Factor}$$

AVERAGE Results:

802.11a

Channel 36

Frequency (MHz)	Meas. Result (dBμV/m)	Cable loss (dB)	Antenna Factor (dB/m)	Receiver Reading (dBμV)	Limit (dBμV/m)	Margin (dB)	Antenna Pol. (H/V)
5139.600	35.5	-33.1	34.4	34.12	54.0	18.5	H
5148.300	35.6	-33.0	34.4	34.09	54.0	18.4	H
10360.000	34.0	-29.8	37.9	25.85	54.0	20.0	H
15540.000	36.1	-26.3	40.1	22.29	54.0	17.9	H
17807.500	40.3	-23.0	41.0	22.33	54.0	13.7	H
17805.300	40.2	-23.1	41.0	22.33	54.0	13.8	H

Channel 40

Frequency (MHz)	Meas. Result (dBμV/m)	Cable loss (dB)	Antenna Factor (dB/m)	Receiver Reading (dBμV)	Limit (dBμV/m)	Margin (dB)	Antenna Pol. (H/V)
5148.000	35.8	-33.0	34.4	34.34	54.0	18.2	H
5252.700	36.4	-32.4	34.4	34.39	54.0	17.6	H
10400.000	34.2	-29.6	38.0	25.83	54.0	19.8	H
15600.000	36.8	-26.4	40.1	23.02	54.0	17.2	H
17806.400	40.3	-23.0	41.0	22.35	54.0	13.7	H
17808.600	40.3	-23.0	41.0	22.31	54.0	13.7	H

Channel 48

Frequency (MHz)	Meas. Result (dBμV/m)	Cable loss (dB)	Antenna Factor (dB/m)	Receiver Reading (dBμV)	Limit (dBμV/m)	Margin (dB)	Antenna Pol. (H/V)
5187.300	36.2	-32.4	34.4	34.18	54.0	17.8	H
5292.600	36.8	-32.1	34.5	34.47	54.0	17.2	H
10480.000	33.0	-30.6	38.1	25.59	54.0	21.0	H
15720.000	36.1	-26.4	40.2	22.25	54.0	17.9	H
17808.600	40.3	-23.0	41.0	22.36	54.0	13.7	H
17805.300	40.3	-23.1	41.0	22.39	54.0	13.7	H

Channel 52

Frequency (MHz)	Meas. Result (dBμV/m)	Cable loss (dB)	Antenna Factor (dB/m)	Receiver Reading (dBμV)	Limit (dBμV/m)	Margin (dB)	Antenna Pol. (H/V)
5206.800	36.3	-32.5	34.4	34.34	54.0	17.7	H
5312.700	37.1	-32.0	34.5	34.63	54.0	16.9	H

10520.000	33.0	-30.9	38.1	25.84	54.0	21.0	H
15780.000	35.8	-26.3	40.2	21.88	54.0	18.2	H
17805.300	40.3	-23.1	41.0	22.41	54.0	13.7	H
17808.600	40.3	-23.0	41.0	22.35	54.0	13.7	H

Channel 56

Frequency (MHz)	Meas. Result (dB μ V/m)	Cable loss (dB)	Antenna Factor (dB/m)	Receiver Reading (dB μ V)	Limit (dB μ V/m)	Margin (dB)	Antenna Pol. (H/V)
5227.800	36.3	-32.5	34.4	34.43	54.0	17.7	H
5332.800	37.1	-31.9	34.5	34.41	54.0	16.9	H
10560.000	33.8	-30.2	38.1	25.88	54.0	20.2	H
15840.000	36.9	-26.2	40.3	22.85	54.0	17.1	H
17807.500	40.4	-23.0	41.0	22.47	54.0	13.6	H
17809.700	40.4	-23.0	41.0	22.44	54.0	13.6	H

Channel 64

Frequency (MHz)	Meas. Result (dB μ V/m)	Cable loss (dB)	Antenna Factor (dB/m)	Receiver Reading (dB μ V)	Limit (dB μ V/m)	Margin (dB)	Antenna Pol. (H/V)
5350.800	36.5	-31.9	34.6	33.80	54.0	17.5	H
5372.700	37.4	-32.0	34.6	34.79	54.0	16.6	H
10640.000	34.0	-29.3	38.2	25.12	54.0	20.0	H
15960.000	37.0	-25.8	40.5	22.36	54.0	17.0	H
17809.700	40.4	-23.0	41.0	22.40	54.0	13.6	H
17808.600	40.3	-23.0	41.0	22.37	54.0	13.7	H

Channel 100

Frequency (MHz)	Meas. Result (dB μ V/m)	Cable loss (dB)	Antenna Factor (dB/m)	Receiver Reading (dB μ V)	Limit (dB μ V/m)	Margin (dB)	Antenna Pol. (H/V)
5452.800	36.3	-32.0	34.7	33.53	54.0	17.7	H
5454.300	36.3	-32.0	34.7	33.59	54.0	17.7	H
11000.000	34.1	-30.2	38.2	26.06	54.0	19.9	H
16500.000	37.4	-26.0	41.1	22.30	54.0	16.6	H
17822.900	40.1	-23.2	40.9	22.35	54.0	13.9	H
17806.400	40.5	-23.0	41.0	22.56	54.0	13.5	H

Channel 120

Frequency (MHz)	Meas. Result	Cable loss	Antenna Factor	Receiver Reading	Limit (dB μ V/m)	Margin (dB)	Antenna Pol.
-----------------	--------------	------------	----------------	------------------	----------------------	-------------	--------------

	(dBμV/m)	(dB)	(dB/m)	(dBμV)			(H/V)
5547.900	38.3	-32.5	34.8	35.95	54.0	15.7	H
5652.000	38.1	-32.5	34.9	35.77	54.0	15.9	H
11200.000	34.4	-30.1	38.4	26.12	54.0	19.6	H
16800.000	37.6	-26.2	41.5	22.26	54.0	16.4	H
17805.300	40.4	-23.1	41.0	22.50	54.0	13.6	H
17809.700	40.4	-23.0	41.0	22.45	54.0	13.6	H

Channel 140

Frequency (MHz)	Meas. Result (dBμV/m)	Cable loss (dB)	Antenna Factor (dB/m)	Receiver Reading (dBμV)	Limit (dBμV/m)	Margin (dB)	Antenna Pol. (H/V)
5727.000	36.1	-33.0	34.9	34.18	54.0	17.9	5727.000
5737.800	36.0	-32.9	34.9	34.05	54.0	18.0	5737.800
11400.000	34.5	-30.2	38.6	26.09	54.0	19.6	11400.000
17100.000	38.1	-25.5	41.3	22.30	54.0	15.9	17100.000
17810.800	40.4	-23.0	41.0	22.46	54.0	13.6	17810.800
17798.700	40.3	-23.2	41.0	22.46	54.0	13.7	17798.700

802.11n-HT20

Channel 36

Frequency (MHz)	Meas. Result (dBμV/m)	Cable loss (dB)	Antenna Factor (dB/m)	Receiver Reading (dBμV)	Limit (dBμV/m)	Margin (dB)	Antenna Pol. (H/V)
5128.500	35.5	-33.2	34.4	34.27	54.0	18.5	H
5148.000	35.6	-33.0	34.4	34.09	54.0	18.4	H
10360.000	34.0	-29.8	37.9	25.89	54.0	20.0	H
15540.000	36.5	-26.3	40.1	22.76	54.0	17.5	H
17809.700	40.3	-23.0	41.0	22.36	54.0	13.7	H
17804.200	40.3	-23.1	41.0	22.43	54.0	13.7	H

Channel 40

Frequency (MHz)	Meas. Result (dBμV/m)	Cable loss (dB)	Antenna Factor (dB/m)	Receiver Reading (dBμV)	Limit (dBμV/m)	Margin (dB)	Antenna Pol. (H/V)
5174.100	35.9	-32.6	34.4	34.06	54.0	18.1	H
5252.100	36.4	-32.4	34.4	34.36	54.0	17.6	H
10400.000	34.3	-29.6	38.0	25.95	54.0	19.7	H
15600.000	36.1	-26.4	40.1	22.30	54.0	17.9	H

17808.600	40.3	-23.0	41.0	22.35	54.0	13.7	H
17807.500	40.3	-23.0	41.0	22.34	54.0	13.7	H

Channel 48

Frequency (MHz)	Meas. Result (dBμV/m)	Cable loss (dB)	Antenna Factor (dB/m)	Receiver Reading (dBμV)	Limit (dBμV/m)	Margin (dB)	Antenna Pol. (H/V)
5188.500	36.3	-32.4	34.4	34.36	54.0	17.7	H
5292.000	36.9	-32.1	34.5	34.52	54.0	17.1	H
10480.000	33.1	-30.6	38.1	25.67	54.0	20.9	H
15720.000	36.0	-26.4	40.2	22.21	54.0	18.0	H
17809.700	40.3	-23.0	41.0	22.31	54.0	13.7	H
17807.500	40.3	-23.0	41.0	22.34	54.0	13.7	H

Channel 52

Frequency (MHz)	Meas. Result (dBμV/m)	Cable loss (dB)	Antenna Factor (dB/m)	Receiver Reading (dBμV)	Limit (dBμV/m)	Margin (dB)	Antenna Pol. (H/V)
5208.600	36.4	-32.5	34.4	34.50	54.0	17.6	H
5312.100	37.0	-32.0	34.5	34.49	54.0	17.0	H
10520.000	33.2	-30.9	38.1	25.97	54.0	20.8	H
15780.000	35.8	-26.3	40.2	21.94	54.0	18.2	H
17809.700	40.3	-23.0	41.0	22.39	54.0	13.7	H
17807.500	40.3	-23.0	41.0	22.36	54.0	13.7	H

Channel 56

Frequency (MHz)	Meas. Result (dBμV/m)	Cable loss (dB)	Antenna Factor (dB/m)	Receiver Reading (dBμV)	Limit (dBμV/m)	Margin (dB)	Antenna Pol. (H/V)
5228.400	36.3	-32.5	34.4	34.35	54.0	17.7	H
5332.800	37.0	-31.9	34.5	34.33	54.0	17.0	H
10560.000	33.8	-30.2	38.1	25.83	54.0	20.2	H
15840.000	36.9	-26.2	40.3	22.81	54.0	17.1	H
17808.600	40.4	-23.0	41.0	22.50	54.0	13.6	H
17807.500	40.4	-23.0	41.0	22.43	54.0	13.6	H

Channel 64

Frequency (MHz)	Meas. Result (dBμV/m)	Cable loss (dB)	Antenna Factor (dB/m)	Receiver Reading (dBμV)	Limit (dBμV/m)	Margin (dB)	Antenna Pol. (H/V)
5372.100	37.1	-32.0	34.6	34.54	54.0	16.9	H

5386.800	36.2	-32.1	34.6	33.61	54.0	17.8	H
10640.000	34.0	-29.3	38.2	25.14	54.0	20.0	H
15960.000	37.9	-25.8	40.5	23.27	54.0	16.1	H
17809.700	40.4	-23.0	41.0	22.42	54.0	13.6	H
17802.000	40.4	-23.1	41.0	22.53	54.0	13.6	H

Channel 100

Frequency (MHz)	Meas. Result (dB μ V/m)	Cable loss (dB)	Antenna Factor (dB/m)	Receiver Reading (dB μ V)	Limit (dB μ V/m)	Margin (dB)	Antenna Pol. (H/V)
5451.900	36.3	-32.0	34.7	33.54	54.0	17.7	H
5457.000	36.2	-32.0	34.7	33.46	54.0	17.8	H
11000.000	34.1	-30.2	38.2	26.06	54.0	19.9	H
16500.000	37.4	-26.0	41.1	22.30	54.0	16.6	H
17811.900	40.4	-23.0	41.0	22.46	54.0	13.6	H
17798.700	40.3	-23.2	41.0	22.46	54.0	13.7	H

Channel 120

Frequency (MHz)	Meas. Result (dB μ V/m)	Cable loss (dB)	Antenna Factor (dB/m)	Receiver Reading (dB μ V)	Limit (dB μ V/m)	Margin (dB)	Antenna Pol. (H/V)
5547.600	36.7	-32.5	34.8	34.38	54.0	17.3	H
5652.000	36.7	-32.5	34.9	34.34	54.0	17.3	H
11200.000	34.4	-30.1	38.4	26.12	54.0	19.6	H
16800.000	37.6	-26.2	41.5	22.26	54.0	16.4	H
17762.400	39.7	-23.8	41.0	22.43	54.0	14.3	H
17811.900	40.4	-23.0	41.0	22.46	54.0	13.6	H

Channel 140

Frequency (MHz)	Meas. Result (dB μ V/m)	Cable loss (dB)	Antenna Factor (dB/m)	Receiver Reading (dB μ V)	Limit (dB μ V/m)	Margin (dB)	Antenna Pol. (H/V)
5728.800	36.0	-33.0	34.9	34.14	54.0	18.0	H
5746.800	36.1	-32.9	34.9	34.09	54.0	17.9	H
11400.000	34.5	-30.2	38.6	26.09	54.0	19.6	H
17100.000	38.1	-25.5	41.3	22.30	54.0	15.9	H
17807.500	40.4	-23.0	41.0	22.47	54.0	13.6	H
17809.720	40.4	-23.0	41.0	22.46	54.0	13.6	H

802.11n-HT40

Channel 38

Frequency (MHz)	Meas. Result (dBμV/m)	Cable loss (dB)	Antenna Factor (dB/m)	Receiver Reading (dBμV)	Limit (dBμV/m)	Margin (dB)	Antenna Pol. (H/V)
5138.400	35.5	-33.1	34.4	34.17	54.0	18.5	H
5149.200	35.7	-32.9	34.4	34.19	54.0	18.3	H
10380.000	34.4	-29.7	38.0	26.13	54.0	19.6	H
15570.000	36.7	-26.3	40.1	22.89	54.0	17.3	H
17809.700	40.3	-23.0	41.0	22.37	54.0	13.7	H
17806.400	40.3	-23.0	41.0	22.39	54.0	13.7	H

Channel 46

Frequency (MHz)	Meas. Result (dBμV/m)	Cable loss (dB)	Antenna Factor (dB/m)	Receiver Reading (dBμV)	Limit (dBμV/m)	Margin (dB)	Antenna Pol. (H/V)
5185.200	36.1	-32.5	34.4	34.16	54.0	17.9	H
5262.900	36.6	-32.3	34.4	34.50	54.0	17.4	H
10460.000	33.3	-30.4	38.1	25.59	54.0	20.7	H
15690.000	36.3	-26.4	40.2	22.50	54.0	17.7	H
17807.500	40.4	-23.0	41.0	22.47	54.0	13.6	H
17810.800	40.3	-23.0	41.0	22.39	54.0	13.7	H

Channel 54

Frequency (MHz)	Meas. Result (dBμV/m)	Cable loss (dB)	Antenna Factor (dB/m)	Receiver Reading (dBμV)	Limit (dBμV/m)	Margin (dB)	Antenna Pol. (H/V)
5188.200	36.0	-32.4	34.4	34.00	54.0	18.0	H
5373.000	36.5	-32.0	34.6	33.91	54.0	17.5	H
10540.000	33.6	-30.5	38.1	25.99	54.0	20.4	H
15810.000	36.7	-26.3	40.3	22.74	54.0	17.3	H
17805.300	40.5	-23.1	41.0	22.58	54.0	13.5	H
17822.900	40.3	-23.2	40.9	22.50	54.0	13.7	H

Channel 62

Frequency (MHz)	Meas. Result (dBμV/m)	Cable loss (dB)	Antenna Factor (dB/m)	Receiver Reading (dBμV)	Limit (dBμV/m)	Margin (dB)	Antenna Pol. (H/V)
5367.600	36.3	-32.0	34.6	33.64	54.0	17.7	H
5450.700	36.3	-32.0	34.7	33.53	54.0	17.7	H
10620.000	34.5	-29.2	38.1	25.51	54.0	19.5	H
15930.000	37.0	-25.9	40.4	22.49	54.0	17.0	H
17763.500	39.7	-23.7	41.0	22.44	54.0	14.3	H

17809.700	40.4	-23.0	41.0	22.48	54.0	13.6	H
-----------	------	-------	------	-------	------	------	---

Channel 102

Frequency (MHz)	Meas. Result (dBμV/m)	Cable loss (dB)	Antenna Factor (dB/m)	Receiver Reading (dBμV)	Limit (dBμV/m)	Margin (dB)	Antenna Pol. (H/V)
5451.900	36.3	-32.0	34.7	33.53	54.0	17.7	H
5455.200	36.2	-32.0	34.7	33.51	54.0	17.8	H
11020.000	34.2	-30.4	38.2	26.40	54.0	19.8	H
16530.000	37.4	-26.0	41.1	22.25	54.0	16.6	H
17793.200	40.1	-23.3	41.0	22.40	54.0	13.9	H
17810.800	40.4	-23.0	41.0	22.46	54.0	13.6	H

Channel 134

Frequency (MHz)	Meas. Result (dBμV/m)	Cable loss (dB)	Antenna Factor (dB/m)	Receiver Reading (dBμV)	Limit (dBμV/m)	Margin (dB)	Antenna Pol. (H/V)
5738.700	36.1	-32.9	34.9	34.09	54.0	17.9	H
5743.200	36.1	-32.9	34.9	34.09	54.0	17.9	H
11340.000	34.5	-30.3	38.5	26.26	54.0	19.5	H
17010.000	38.3	-25.6	41.4	22.54	54.0	15.7	H
17798.700	40.3	-23.2	41.0	22.46	54.0	13.7	H
17818.500	40.2	-23.1	40.9	22.34	54.0	13.8	H

PEAK Results:

802.11a

Channel 36

Frequency (MHz)	Meas. Result (dBμV/m)	Cable loss (dB)	Antenna Factor (dB/m)	Receiver Reading (dBμV)	Limit (dBμV/m)	Margin (dB)	Antenna Pol. (H/V)
5143.800	50.2	-33.0	34.4	48.78	74.0	23.8	H
5147.540	50.6	-33.0	34.4	49.16	74.0	23.4	H
17828.400	53.3	-23.3	40.9	35.58	74.0	20.7	H
17816.400	53.0	-23.1	40.9	35.13	74.0	21.0	V
17794.200	52.9	-23.2	41.0	35.21	74.0	21.1	H
17745.000	52.9	-24.0	41.0	35.93	74.0	21.1	H

Channel 40

Frequency (MHz)	Meas. Result (dBμV/m)	Cable loss (dB)	Antenna Factor (dB/m)	Receiver Reading (dBμV)	Limit (dBμV/m)	Margin (dB)	Antenna Pol. (H/V)
-----------------	-----------------------	-----------------	-----------------------	-------------------------	----------------	-------------	--------------------

5148.900	48.5	-33.0	34.4	47.01	74.0	25.5	H
5252.100	49.2	-32.4	34.4	47.16	74.0	24.8	H
17831.400	54.4	-23.3	40.9	36.79	74.0	19.6	H
17902.800	53.3	-24.2	40.9	36.71	74.0	20.7	V
17810.400	53.0	-23.0	41.0	35.01	74.0	21.0	H
17802.600	52.9	-23.1	41.0	35.00	74.0	21.1	H

Channel 48

Frequency (MHz)	Meas. Result (dBμV/m)	Cable loss (dB)	Antenna Factor (dB/m)	Receiver Reading (dBμV)	Limit (dBμV/m)	Margin (dB)	Antenna Pol. (H/V)
5208.600	49.3	-32.5	34.4	47.40	74.0	24.7	H
5287.500	49.6	-32.1	34.5	47.25	74.0	24.4	H
17852.400	53.6	-23.6	40.9	36.30	74.0	20.4	H
17821.800	53.2	-23.2	40.9	35.38	74.0	20.8	V
17793.600	53.1	-23.3	41.0	35.39	74.0	20.9	V
17798.400	53.1	-23.2	41.0	35.29	74.0	20.9	H

Channel 52

Frequency (MHz)	Meas. Result (dBμV/m)	Cable loss (dB)	Antenna Factor (dB/m)	Receiver Reading (dBμV)	Limit (dBμV/m)	Margin (dB)	Antenna Pol. (H/V)
5202.300	49.8	-32.5	34.4	47.83	74.0	24.2	H
5308.500	50.3	-32.0	34.5	47.82	74.0	23.7	H
17805.000	53.1	-23.1	41.0	35.17	74.0	20.9	V
17799.600	52.9	-23.2	41.0	35.05	74.0	21.1	V
17806.200	52.8	-23.0	41.0	34.90	74.0	21.2	V
17813.400	52.7	-23.0	40.9	34.83	74.0	21.3	V

Channel 56

Frequency (MHz)	Meas. Result (dBμV/m)	Cable loss (dB)	Antenna Factor (dB/m)	Receiver Reading (dBμV)	Limit (dBμV/m)	Margin (dB)	Antenna Pol. (H/V)
5248.200	50.7	-32.4	34.4	48.69	74.0	23.4	H
5352.600	50.1	-31.9	34.6	47.45	74.0	23.9	H
17837.400	52.7	-23.4	40.9	35.10	74.0	21.3	V
17806.200	52.6	-23.0	41.0	34.66	74.0	21.4	V
17898.600	52.3	-24.2	40.9	35.63	74.0	21.7	V
17925.000	52.2	-24.5	40.9	35.87	74.0	21.8	H

Channel 64

Frequency (MHz)	Meas. Result (dBμV/m)	Cable loss (dB)	Antenna Factor (dB/m)	Receiver Reading (dBμV)	Limit (dBμV/m)	Margin (dB)	Antenna Pol. (H/V)
5367.080	51.1	-32.0	34.6	48.48	74.0	22.9	H
5372.730	52.1	-32.0	34.6	49.49	74.0	21.9	H
17802.000	53.1	-23.1	41.0	35.21	74.0	20.9	H
17797.200	52.9	-23.2	41.0	35.15	74.0	21.1	V
17809.200	52.5	-23.0	41.0	34.51	74.0	21.5	V
17887.200	52.4	-24.0	40.9	35.52	74.0	21.6	V

Channel 100

Frequency (MHz)	Meas. Result (dBμV/m)	Cable loss (dB)	Antenna Factor (dB/m)	Receiver Reading (dBμV)	Limit (dBμV/m)	Margin (dB)	Antenna Pol. (H/V)
5454.960	50.7	-32.0	34.7	47.95	74.0	23.3	H
5460.000	50.2	-32.0	34.7	47.51	74.0	23.8	H
17778.000	52.8	-23.5	41.0	35.37	74.0	21.2	V
17790.600	52.7	-23.3	41.0	35.04	74.0	21.3	V
17820.000	52.6	-23.1	40.9	34.78	74.0	21.4	V
17796.000	52.6	-23.2	41.0	34.82	74.0	21.4	H

Channel 120

Frequency (MHz)	Meas. Result (dBμV/m)	Cable loss (dB)	Antenna Factor (dB/m)	Receiver Reading (dBμV)	Limit (dBμV/m)	Margin (dB)	Antenna Pol. (H/V)
5547.450	52.8	-32.5	34.8	50.46	74.0	21.2	H
5652.600	52.0	-32.5	34.9	49.71	74.0	22.0	H
17744.400	52.7	-24.1	41.0	35.73	74.0	21.3	H
17807.400	52.7	-23.0	41.0	34.72	74.0	21.3	V
17814.600	52.6	-23.1	40.9	34.72	74.0	21.4	H
17817.000	52.5	-23.1	40.9	34.65	74.0	21.5	H

Channel 140

Frequency (MHz)	Meas. Result (dBμV/m)	Cable loss (dB)	Antenna Factor (dB/m)	Receiver Reading (dBμV)	Limit (dBμV/m)	Margin (dB)	Antenna Pol. (H/V)
5726.320	52.3	-33.0	34.9	50.38	74.0	21.7	H
5744.900	51.6	-32.9	34.9	49.56	74.0	22.4	H
17791.800	53.6	-23.3	41.0	35.90	74.0	20.4	H
17798.400	53.1	-23.2	41.0	35.32	74.0	20.9	H

17802.600	52.9	-23.1	41.0	35.02	74.0	21.1	H
17795.400	52.6	-23.2	41.0	34.89	74.0	21.4	V

802.11n-HT20

Channel 36

Frequency (MHz)	Meas. Result (dBμV/m)	Cable loss (dB)	Antenna Factor (dB/m)	Receiver Reading (dBμV)	Limit (dBμV/m)	Margin (dB)	Antenna Pol. (H/V)
5147.920	50.5	-33.0	34.4	49.05	74.0	23.5	H
5149.500	50.4	-32.9	34.4	48.93	74.0	23.6	H
17818.200	52.8	-23.1	40.9	35.01	74.0	21.2	V
17779.200	52.6	-23.5	41.0	35.12	74.0	21.4	H
17820.000	52.5	-23.1	40.9	34.71	74.0	21.5	V
17805.600	52.4	-23.1	41.0	34.54	74.0	21.6	H

Channel 40

Frequency (MHz)	Meas. Result (dBμV/m)	Cable loss (dB)	Antenna Factor (dB/m)	Receiver Reading (dBμV)	Limit (dBμV/m)	Margin (dB)	Antenna Pol. (H/V)
5128.650	48.8	-33.2	34.4	47.53	74.0	25.2	H
5260.800	49.1	-32.3	34.4	46.99	74.0	24.9	H
17762.400	52.9	-23.8	41.0	35.70	74.0	21.1	H
17824.200	52.7	-23.2	40.9	34.96	74.0	21.3	H
17826.600	52.6	-23.2	40.9	34.92	74.0	21.4	H
17935.800	52.6	-24.7	40.9	36.43	74.0	21.4	V

Channel 48

Frequency (MHz)	Meas. Result (dBμV/m)	Cable loss (dB)	Antenna Factor (dB/m)	Receiver Reading (dBμV)	Limit (dBμV/m)	Margin (dB)	Antenna Pol. (H/V)
5185.100	50.1	-32.5	34.4	48.17	74.0	23.9	H
5293.050	48.7	-32.1	34.5	46.36	74.0	25.3	H
17808.000	53.9	-23.0	41.0	35.99	74.0	20.1	V
17790.600	52.8	-23.3	41.0	35.11	74.0	21.2	H
17796.000	52.7	-23.2	41.0	35.00	74.0	21.3	V
17764.200	52.7	-23.7	41.0	35.43	74.0	21.3	V

Channel 52

Frequency (MHz)	Meas. Result (dBμV/m)	Cable loss (dB)	Antenna Factor (dB/m)	Receiver Reading (dBμV)	Limit (dBμV/m)	Margin (dB)	Antenna Pol. (H/V)
-----------------	-----------------------	-----------------	-----------------------	-------------------------	----------------	-------------	--------------------

5151.300	49.7	-32.9	34.4	48.17	74.0	24.3	H
5313.300	50.3	-32.0	34.5	47.82	74.0	23.7	H
17777.400	53.0	-23.5	41.0	35.58	74.0	21.0	H
17819.400	52.6	-23.1	40.9	34.78	74.0	21.4	V
17807.400	52.5	-23.0	41.0	34.57	74.0	21.5	V
17879.400	52.5	-23.9	40.9	35.50	74.0	21.5	V

Channel 56

Frequency (MHz)	Meas. Result (dBμV/m)	Cable loss (dB)	Antenna Factor (dB/m)	Receiver Reading (dBμV)	Limit (dBμV/m)	Margin (dB)	Antenna Pol. (H/V)
5203.200	50.5	-32.5	34.4	48.54	74.0	23.5	H
5321.100	49.5	-31.9	34.5	46.90	74.0	24.5	H
17777.400	53.0	-23.5	41.0	35.58	74.0	21.0	V
17819.400	52.6	-23.1	40.9	34.78	74.0	21.4	H
17807.400	52.5	-23.0	41.0	34.57	74.0	21.5	V
17879.400	52.5	-23.9	40.9	35.50	74.0	21.5	H

Channel 64

Frequency (MHz)	Meas. Result (dBμV/m)	Cable loss (dB)	Antenna Factor (dB/m)	Receiver Reading (dBμV)	Limit (dBμV/m)	Margin (dB)	Antenna Pol. (H/V)
5350.460	51.3	-31.9	34.6	48.62	74.0	22.7	H
5372.590	51.3	-32.0	34.6	48.66	74.0	22.7	H
17800.200	53.3	-23.1	41.0	35.44	74.0	20.7	V
17811.600	53.2	-23.0	41.0	35.28	74.0	20.8	V
17835.600	52.9	-23.3	40.9	35.30	74.0	21.1	H
17798.400	52.8	-23.2	41.0	34.99	74.0	21.2	H

Channel 100

Frequency (MHz)	Meas. Result (dBμV/m)	Cable loss (dB)	Antenna Factor (dB/m)	Receiver Reading (dBμV)	Limit (dBμV/m)	Margin (dB)	Antenna Pol. (H/V)
5451.560	50.6	-32.0	34.7	47.81	74.0	23.4	H
5457.480	50.6	-32.0	34.7	47.90	74.0	23.4	H
17790.600	53.1	-23.3	41.0	35.43	74.0	20.9	V
17824.200	52.9	-23.2	40.9	35.11	74.0	21.1	V
17796.600	52.8	-23.2	41.0	35.06	74.0	21.2	H
17898.600	52.7	-24.2	40.9	36.00	74.0	21.3	H

Channel 120

Frequency (MHz)	Meas. Result (dBμV/m)	Cable loss (dB)	Antenna Factor (dB/m)	Receiver Reading (dBμV)	Limit (dBμV/m)	Margin (dB)	Antenna Pol. (H/V)
5505.600	50.4	-32.3	34.8	47.92	74.0	23.6	H
5661.600	49.6	-32.5	34.9	47.21	74.0	24.4	H
17804.400	53.2	-23.1	41.0	35.35	74.0	20.8	V
17781.000	52.6	-23.5	41.0	35.08	74.0	21.4	H
17811.000	52.6	-23.0	41.0	34.65	74.0	21.4	V
17821.800	52.5	-23.2	40.9	34.74	74.0	21.5	H

Channel 140

Frequency (MHz)	Meas. Result (dBμV/m)	Cable loss (dB)	Antenna Factor (dB/m)	Receiver Reading (dBμV)	Limit (dBμV/m)	Margin (dB)	Antenna Pol. (H/V)
5732.700	51.1	-33.0	34.9	49.15	74.0	22.9	H
5740.020	51.0	-32.9	34.9	49.00	74.0	23.0	H
17783.400	52.6	-23.4	41.0	35.07	74.0	21.4	V
17896.200	52.4	-24.2	40.9	35.72	74.0	21.6	H
17806.200	52.4	-23.0	41.0	34.51	74.0	21.6	V
17826.600	52.3	-23.2	40.9	34.63	74.0	21.7	H

802.11n-HT40

Channel 38

Frequency (MHz)	Meas. Result (dBμV/m)	Cable loss (dB)	Antenna Factor (dB/m)	Receiver Reading (dBμV)	Limit (dBμV/m)	Margin (dB)	Antenna Pol. (H/V)
5142.800	50.5	-33.0	34.4	49.05	74.0	23.5	H
5149.020	50.6	-33.0	34.4	49.08	74.0	23.4	H
17799.000	53.8	-23.2	41.0	36.04	74.0	20.2	H
17880.600	53.3	-23.9	40.9	36.36	74.0	20.7	V
17889.600	53.2	-24.1	40.9	36.43	74.0	20.8	H
17795.400	53.1	-23.2	41.0	35.31	74.0	20.9	H

Channel 46

Frequency (MHz)	Meas. Result (dBμV/m)	Cable loss (dB)	Antenna Factor (dB/m)	Receiver Reading (dBμV)	Limit (dBμV/m)	Margin (dB)	Antenna Pol. (H/V)
5189.100	49.0	-32.5	34.4	47.02	74.0	25.0	H
5263.500	50.5	-32.3	34.4	48.38	74.0	23.5	H
17801.400	53.1	-23.1	41.0	35.30	74.0	20.9	V
17813.400	52.8	-23.0	40.9	34.86	74.0	21.2	V

17802.000	52.7	-23.1	41.0	34.86	74.0	21.3	V
17816.400	52.4	-23.1	40.9	34.58	74.0	21.6	H

Channel 54

Frequency (MHz)	Meas. Result (dBμV/m)	Cable loss (dB)	Antenna Factor (dB/m)	Receiver Reading (dBμV)	Limit (dBμV/m)	Margin (dB)	Antenna Pol. (H/V)
5212.800	49.8	-32.5	34.4	47.85	74.0	24.2	H
5368.800	49.4	-32.0	34.6	46.81	74.0	24.6	H
17817.000	54.2	-23.1	40.9	36.34	74.0	19.8	V
17802.000	52.8	-23.1	41.0	34.98	74.0	21.2	H
17823.600	52.5	-23.2	40.9	34.70	74.0	21.5	H
17796.600	52.4	-23.2	41.0	34.60	74.0	21.6	H

Channel 62

Frequency (MHz)	Meas. Result (dBμV/m)	Cable loss (dB)	Antenna Factor (dB/m)	Receiver Reading (dBμV)	Limit (dBμV/m)	Margin (dB)	Antenna Pol. (H/V)
5351.500	51.6	-31.9	34.6	48.94	74.0	22.4	H
5358.290	51.7	-31.9	34.6	49.08	74.0	22.3	H
17814.600	53.0	-23.1	40.9	35.16	74.0	21.0	V
17796.000	52.7	-23.2	41.0	34.91	74.0	21.3	H
17804.400	52.6	-23.1	41.0	34.68	74.0	21.4	V
17794.200	52.5	-23.2	41.0	34.79	74.0	21.5	V

Channel 102

Frequency (MHz)	Meas. Result (dBμV/m)	Cable loss (dB)	Antenna Factor (dB/m)	Receiver Reading (dBμV)	Limit (dBμV/m)	Margin (dB)	Antenna Pol. (H/V)
5453.380	50.9	-32.0	34.7	48.19	74.0	23.1	H
5458.700	50.6	-32.0	34.7	47.89	74.0	23.4	H
17808.600	53.2	-23.0	41.0	35.23	74.0	20.8	V
17802.600	53.1	-23.1	41.0	35.21	74.0	20.9	V
17937.000	52.7	-24.7	40.9	36.58	74.0	21.3	V
17787.600	52.6	-23.4	41.0	35.02	74.0	21.4	V

Channel 134

Frequency (MHz)	Meas. Result (dBμV/m)	Cable loss (dB)	Antenna Factor (dB/m)	Receiver Reading (dBμV)	Limit (dBμV/m)	Margin (dB)	Antenna Pol. (H/V)
5725.296	50.3	-33.0	34.9	48.37	74.0	23.7	H

5736.848	50.3	-32.9	34.9	48.33	74.0	23.7	H
17814.000	53.5	-23.1	40.9	35.62	74.0	20.5	H
17817.000	53.3	-23.1	40.9	35.48	74.0	20.7	V
17811.600	53.2	-23.0	41.0	35.28	74.0	20.8	V
17787.600	53.1	-23.4	41.0	35.47	74.0	20.9	H

Test graphs as below:

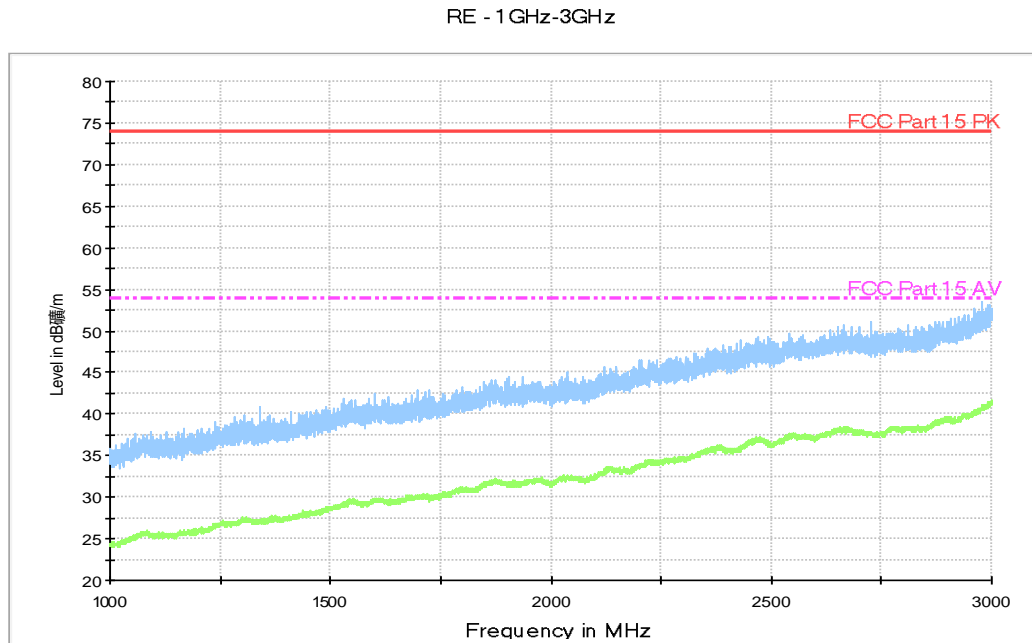


Fig. 35 Radiated Spurious Emission (802.11a, ch36, 1 GHz-3 GHz)

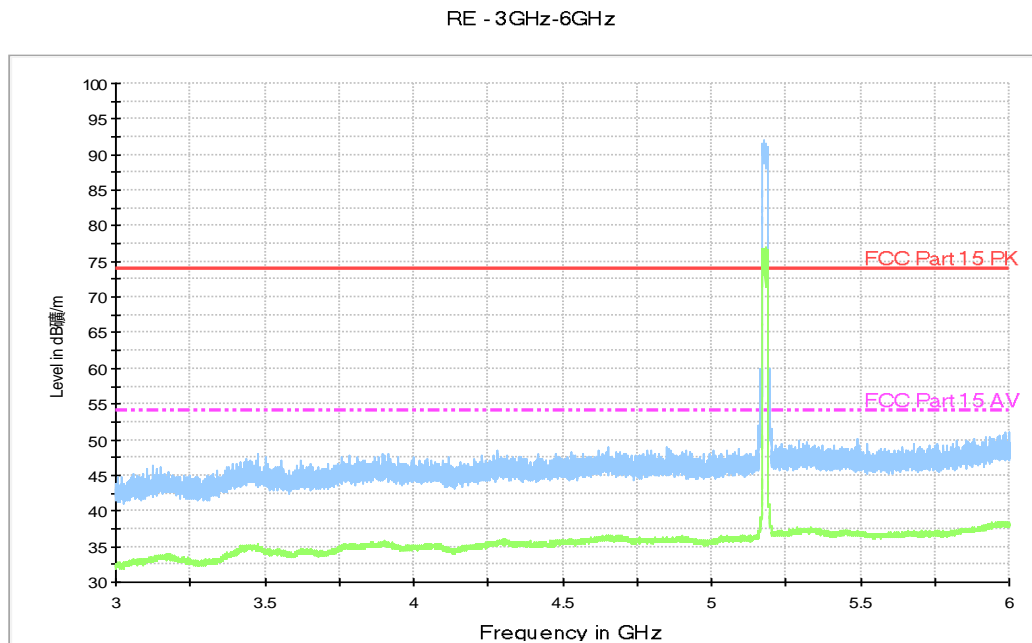


Fig. 36 Radiated Spurious Emission (802.11a, ch36, 3 GHz-6 GHz)

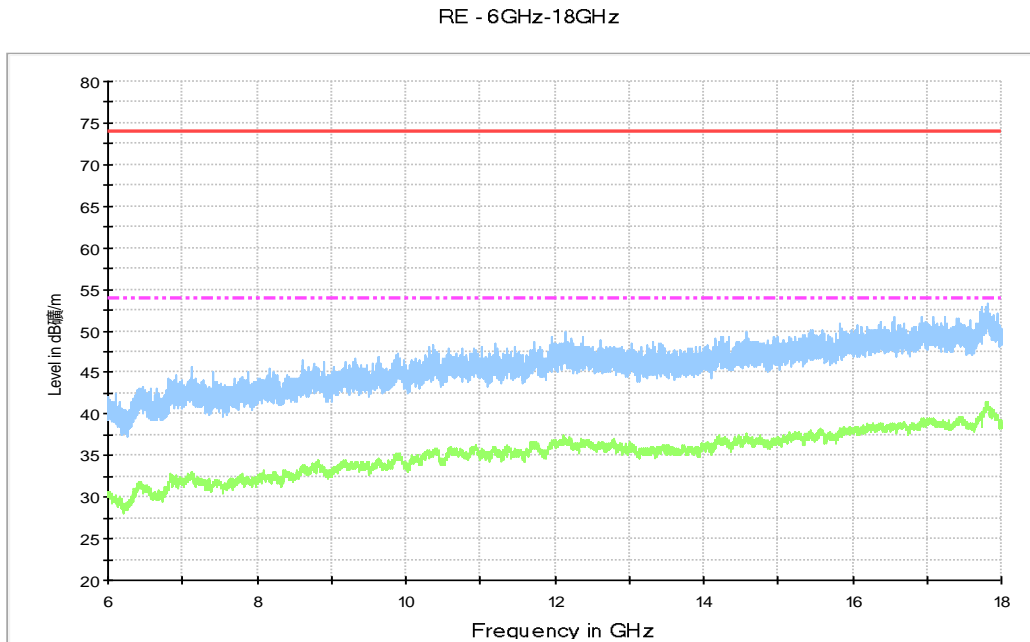


Fig. 37 Radiated Spurious Emission (802.11a, ch36, 6 GHz-18 GHz)

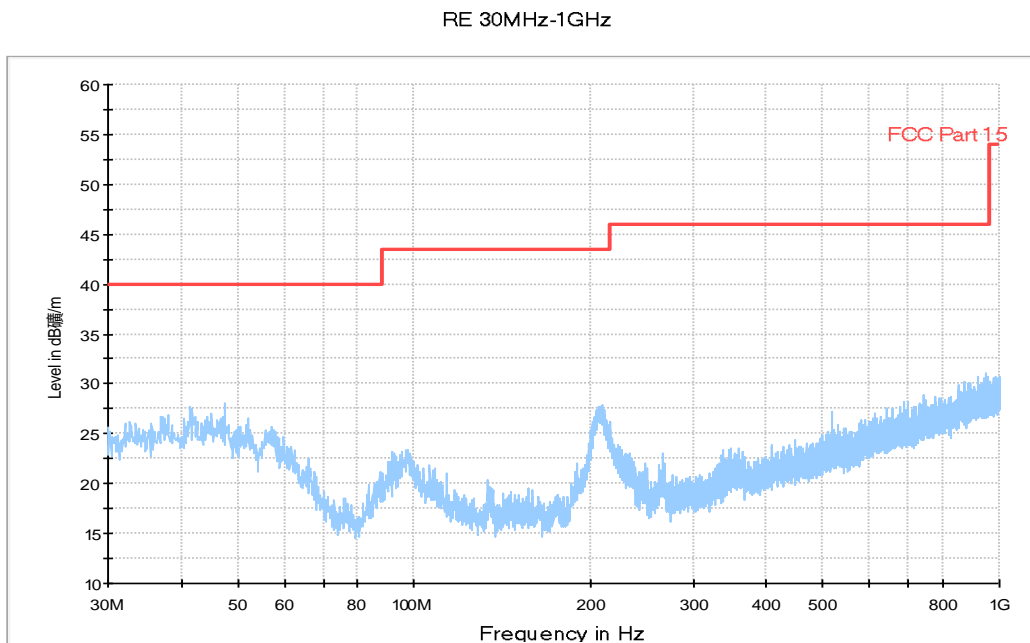


Fig. 38 Radiated Spurious Emission (802.11a, ch40, 30 MHz-1 GHz)

RE - 1GHz-3GHz

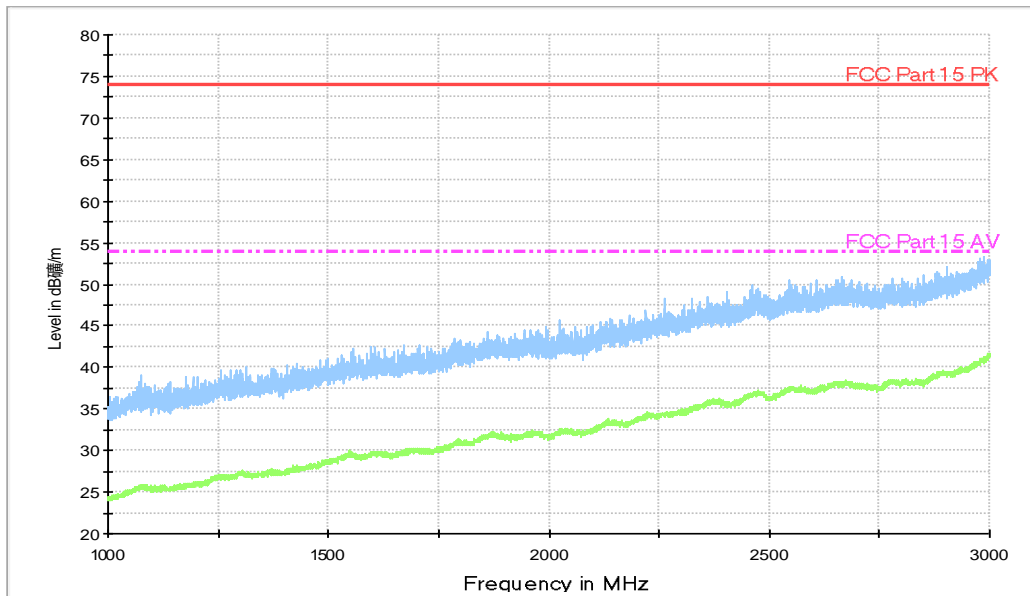


Fig. 39 Radiated Spurious Emission (802.11a, ch40, 1 GHz-3 GHz)

RE - 3GHz-6GHz

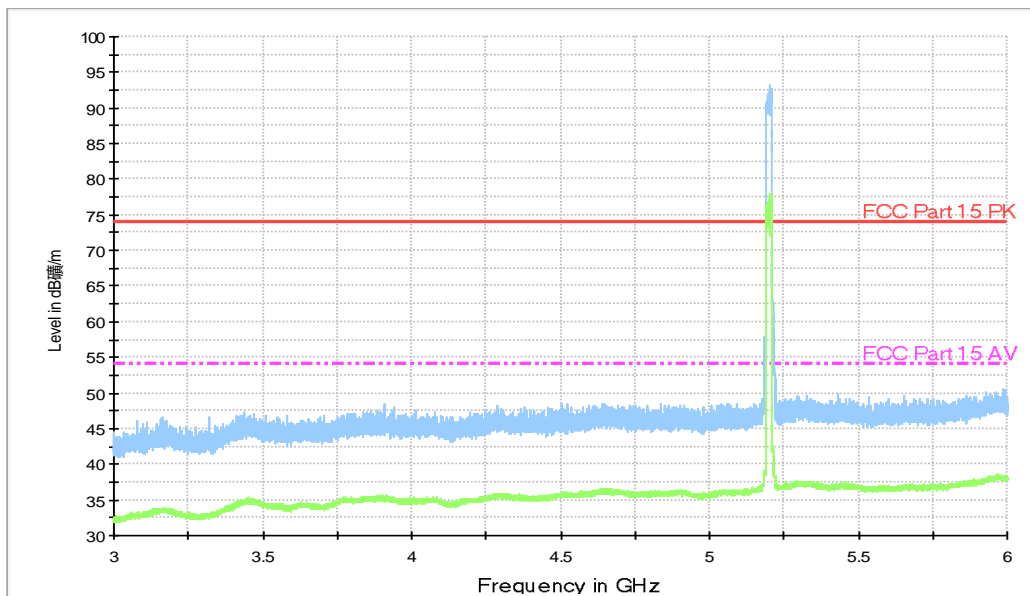


Fig. 40 Radiated Spurious Emission (802.11a, ch40, 3 GHz-6 GHz)