



USER'S MANUAL

Digital wireless interphone

CE DM-1260

IMPORTANT ITEMS

Please read the instructions carefully before using.

Please keep this manual.

The direct mode, transfer mode, a cluster mode of operation, please consult your dealer.

⚠ Precautions for battery use:

- Please do not disassemble or refit batteries.
There is a protective circuit inside the battery, disassembly or modification of the battery will lead to damage to the protection circuit, the battery may produce smoke, rupture or fire.
- Do not short-circuit the battery.
Do not use any metal to connect the battery "+" pole and "-" pole, do not use metal object container to store and store battery. If the battery is short circuited, it will produce too large current, the battery will heat, smoke, break or f⁺⁴⁰
- Please do not place the battery near the fire, stove or other heater. Please don't burn or heat the battery. Batteries can produce heat, fireworks, breaks, or fires.
- Do not expose the battery to rain, snow, sea water or any other liquid.
Do not charge or use wet batteries. If the battery gets wet, it must be dried before use.

⚠ Precautions for charger:

- Please do not plug the vent of the charger, otherwise it may cause internal parts damage and cause electric shock or fire.
- Please don't let the charger close to the radiator or heat source; please don't pad the paper under the charger.
- Please do not put the charger in a closed container and on the bed, sofa or carpet.
- Please do not use the charger in the bathtub, the pool, the swimming pool or the wet basement.
- Please do not place the metal sheet in a holder, otherwise the conductive material may damage the machine.
- Please don't press the power supply to bend or twist the pins.
- Please do not allow the charger to have stains, dust, water traces or food.
- Please do not put the charger in high temperature or exposure to the sun.

⚠ Notice of using device:

- Device and battery do not charge when wet.
- Please do not place the interphone on the unstable surface.
- Before installing options, be sure to turn off the device power supply.
- Please don't press the PTT key when you don't want to talk.
- In the launch, the device is not too close to or contact with the exposed parts of the body (especially the face and eyes), please keep the antenna more than 2.5 centimeters away from the body.
- When launching, the distance between the mouth and the microphone is 5 to 10 centimeters, which makes the sound clearer and reduces the electromagnetic radiation.
- Headset headset connected to intercom, please reduce the volume of interphone.
- Please do not use the option which is not made by our company.
- Please do not damage the device and the label on the back of the battery, otherwise it will reduce the waterproof performance of the device.
- Do not disassemble the device without permission, which may cause device failure, and will reduce the waterproof performance of device.
- Do not place the radio at places where the ambient temperature is below -30 or above +60 centigrade or in direct sunlight.

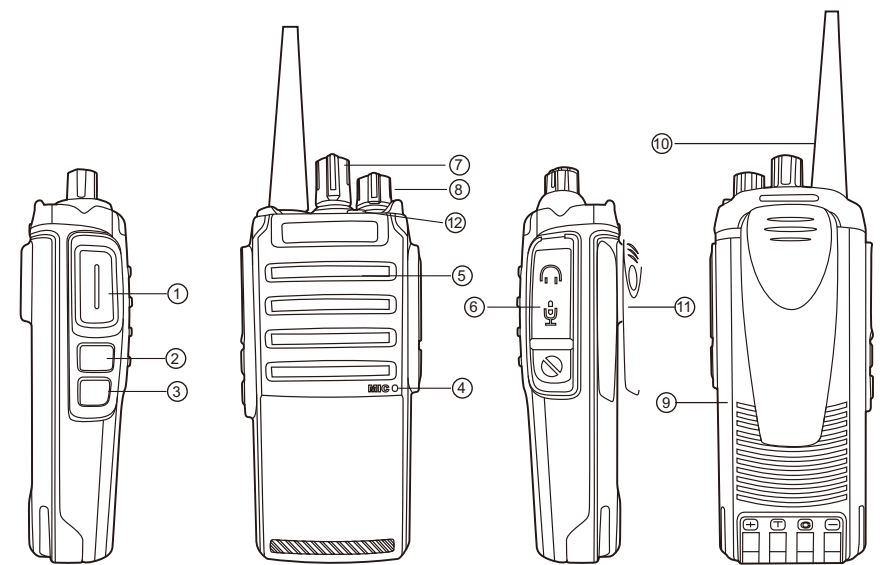
⚠ Please do not use device on the following occasions:

- Near explosive sites.
- On the plane.
- Near the gas station.

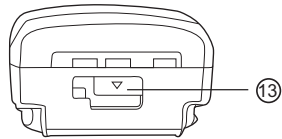
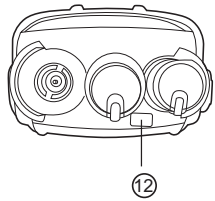
CONTENTS

1 Button description	1
2 Basic operations	3
Powering on.....	3
Channel selection.....	3
Volume adjusting.....	3
Reception and emission.....	3
Parameter configuration.....	4
Work mode.....	9
3 Device assembly	10
Battery installation and disassembly.....	10
Installation and disassembly of antenna.....	10
Installation and disassembly of belt clip.....	11
Equipment fittings.....	11
Clean.....	11
Technical index	12

I BUTTON DESCRIPTION



1 BUTTON DESCRIPTION



Serial number	Part name	Serial number	Part name
1	PTT Key	7	Channel switch
2	SK1 Upper key	8	Volume / power switch
3	SK2 bottom key	9	Battery
4	Microphone	10	Antenna
5	Speaker	11	Belt clamp
6	Earphone Headset	12	Indicator light

2 BASIC OPERATIONS

POWERING ON

- **Start up:**
Clockwise turn the volume switch knob, hear "bang" sound, the top of the indicator light orange, the speaker has the starting prompt sound. When the orange indicator lights out and the channel prompt tone is issued, it shows that the interphone is started normally. The boot time is about 8 seconds.
- **Shutdown:**
Turn the volume switch counterclockwise, until the "bang" sound is heard, the intercom power switch is switched off, and the interphone is turned off.

CHANNEL SWITCHING

- Rotating the channel knob, the white screen printing on the knob cap aligned to the number printed on the shell, that is, switch to the corresponding channel. During switching, the indicator light orange, switch to complete the channel prompt tone, and indicate the lights out.

VOLUME ADJUSTING

- When the interphone turns on the power supply, the loudspeaker rotates clockwise and the sound becomes larger.
- Turn the speaker counterclockwise and make the sound smaller.

RECEPTION AND EMISSION

- **Receive:**
Turn on the intercom, switch to the corresponding channel, that is to enter the channel standby state. When the signal is received, the green light is switched on and the volume of the loudspeaker is adjusted to the proper value.
- **Emission:**
Turn on the intercom and switch to the corresponding channel. Press PTT, the red light of the indicator lights up, which means that the transmitter enters the transmitter, and the microphone is 5-10 centimeters in order to speak. Loosen the PTT, and the device returns to standby mode.

2 BASIC OPERATIONS

PARAMETER CONFIGURATION

The parameters of the DM-1260 interphone need to be configured by the write frequency software of the host computer. Before entering the write frequency software, the write frequency line USB end is connected with the computer, and the other end is inserted into the earphone socket of the interphone.

Write frequency interface:

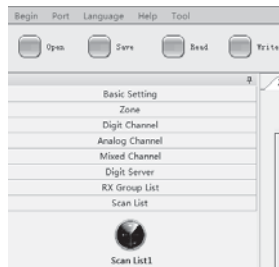


Figure 1 write frequency software interface

Select communication port:

As shown in Figure 2, after opening the write frequency software, first click the "communication port" option, select the corresponding COM port.

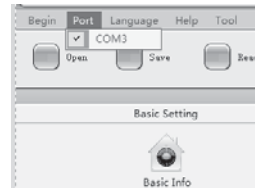


Fig. 2 port of communication

Set up:

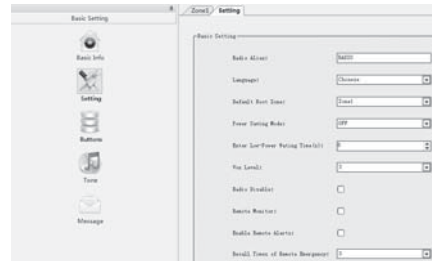


Figure 3 settings

2 BASIC OPERATIONS

Key:

The function buttons of interphone SK1 and SK2 can be configured by "button 3" and "button 4". As shown in figure 4.

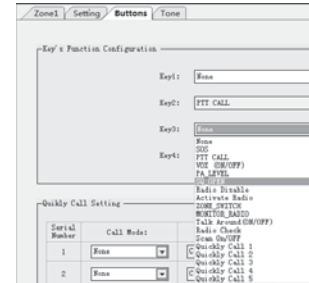


Figure 4 key configuration confidence

Cue tone:

Under the "prompt tone" item, you can set up some beep sounds of the interphone, such as the known indicator lamp and the low electric alarm function. As shown in figure 5.

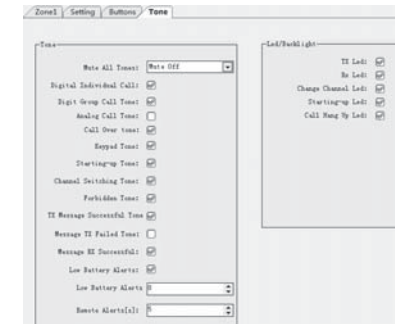


Figure 5 prompt tone item

Region:

A walkie talkie can be configured with multiple "zones", where 16 channels can be set at most. As shown in figure 6:



Figure 6 region

The channel in the available channel list refers to the channel configured in the "digital channel" and "analog channel" selection. The channel member is the channel that the user chooses to use, and the number on the right side of the alias corresponds to the channel number on the channel switch. The digital channel and analog channel in the available channel list should be configured in the "digital channel" and "analog channel" options.

Digital channel:

Click on the "digital channel" tab to enter. Click the right button in the blank and add the option. Click to add a new digital channel. As shown in figure 7.

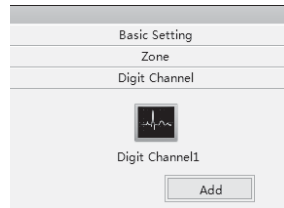


Figure 7 adding a digital channel

Click on the corresponding digital channel, the right window can enter the parameter settings of the channel. As shown in figure 8. Among them, the "emission color code for receiving and transmitting to set"; "launch contact" refers to people call ID, "receiving list" refers to this as the transmitter receiver ID number, you can set up a number of.

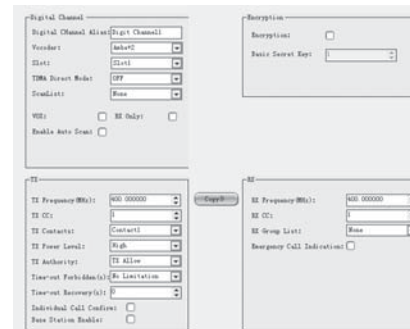


Figure 8 digital channel parameter setting

➤ **Analog channel:**

Click on the "analog channel" tab to enter. Click the right in the blank, add options, click to add a new analog channel. Similarly, click on the corresponding analog channel, you can enter the analog channel parameter settings, as shown in figure 9.



Figure 9 analog channel parameter setting

➤ **Hybrid channel:**
The mixed channel parameter configuration interface is shown in figure 10.

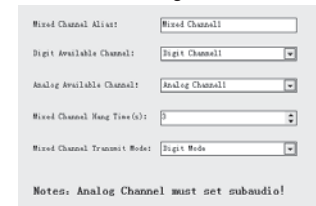


Figure 10 mixed channel parameter setting

2 BASIC OPERATIONS

➤ Digital service:

There are two sets of basic parameters and contacts in the digital service project. "Basic parameters" mainly refers to some parameters settings of the machine, in which the "native ID" number is the only identification code of the customer in the communication group, and must ensure that the other members of the communication group ID is different, otherwise the same ID number members can not realize interoperability. As shown in figure 11.

Figure 11 configuration of basic parameters

The "contact" configuration is shown in figure 12. Call alias, call type, call ID and so on. There are more than one call and group call at the same time. "Full call" can only be set one, and the number of ID is 16777215.

	Call Alias	Call Type	Call ID
1	Contact1	Individual Call	00000001
2	Contact2	Individual Call	00000002
3	Contact3	Group Call	00000003
4	Contact4	Group Call	00000004
5	Contact5	All Call	16777215

Figure 12 contact setting table

➤ List of receive groups:

The list of receiving groups, as its name implies, is the list set by the receiver for group call, and the call and full call are not in this list. Multiple or one group can be integrated into a receiving group. As shown in figure 13.

Figure 13 list setting of receive group

2 BASIC OPERATIONS

➤ Scan list:

Figure 14 settings of scan list

"Scan list" sets the channel needed to scan in the scan mode. The group members are added to the scan channel, "move up" and "move down" to adjust the scan order.

WORK MODE

The handheld supports conventional mode and cluster mode. The working mode needs to be configured by the upper computer.

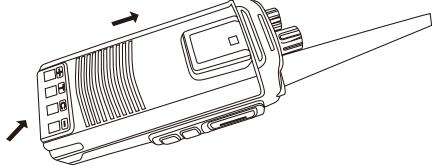
Conventional mode: in this mode, the mode of work is digital communication and analog communication. Digital communication: support call, group call, short message and other functions. Analog communication: has the conventional function of analog walkie talkie, can communicate with other analog walkie talkie.

Cluster mode: in this mode, the interphone registers in the system. Realize voice and data group call, call, cross regional call, scheduling calls and other functions.

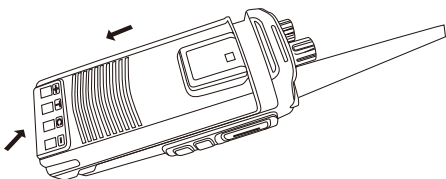
3 DEVICE ASSEMBLY

Battery installation and disassembly

- Insert the battery according to the diagram.
- According to the direction of the battery icon into, until I heard a clatter.



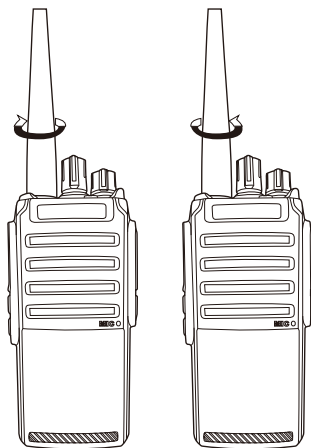
- The battery button is pushed out in the direction of the arrow.
- Then push the battery in the direction of the arrow.



-10-

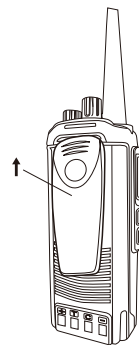
Installation and disassembly of antenna

- Clockwise will tighten to the size of antenna antenna.
- Turn the antenna out counterclockwise.



Installation and disassembly of belt clip

- The belt clip card in accordance with the slot position and push down until you hear a "click" sound installation is complete.



- The elastic clips of the belt clip are lifted outwards and pushed upwards, so that the belt clip can be dismounted.



-11-

Equipment fittings

SERIAL NUMBER	PROJECT	NUMBER
1	Host	1
2	Battery	1
3	Antenna	1
4	Charger	1
5	Belt clamp	1
6	Instructions	1

Clean

- Please regularly use clean dry lint free or brush to wipe the dust on the surface of the product and the charging pole.
- The key, control knob and cabinet of this product are very dirty. Clean with neutral detergent and non-woven fabric. Don't use chemical agents such as detergent, alcohol, spray or petroleum preparation to avoid damage to the surface and shell. After cleaning, make sure that the product is completely dry, otherwise don't use it.

Technical index

SPECIFICATION			
Frequency Range	400-470MHz	Size	62 X 44 X 147mm
Channel Vapacity	No Screen16 Screen256	Weight	316g
Operating Voltage	DC 7.4V	Antenna Configuration	Rubber Rod Antenna
Channel Spacing	12.5KHz	Antenna Impedance	50Ω
Operating Temperature	-25°C→+60°C	Working	The same frequency of simplex or simplex
Storage Temperature	-40°C→+85°C		

RECEIVER			
Frequency Range	400-470MHz	Spurious response suppression	TIA 603C:70dB ETSI:70dB
Channel spacing	12.5KHz	Receiving spurious emissions	<-57dBm@1GHz >-47dBm@1GHz
Frequency stability	±1.0ppm	Blocking	84dB
Analog sensibility	0.35uV/-116dBm(20dB SINAD) 0.22uV/+120dBm(Typical)	Rated audio power	1W
Digital sensibility	0.35V/-117dBm(BER 5W) 0.7uV/-110dBm(BER 1%)	Audio response	+1dB ~ -3dB
Spurious response	TIA 603C: 65dB ETSI: 65dB	Rated audio distortion	≤3%
Adjacent channel selectivity	TIA 603C: 65dB@12.5KHZ ETSI: 65dB@12.5KHZ		

TRANSMITTER			
Frequency Range	400-470MHz	Spurious response suppression	-60dB@12.5KHz
Channel spacing	12.5KHz	RM modulation mode	12.5KHz F3E
Frequency stability	±1.5ppm	4FSK digital modulation mode	12.5KHz(data only):7K60F1D 12.5KHz(data+voice):7K60F1E
TX power	Low: 1W High:5W	Modulation limit	+1dB~ -3dB
FM noise	-40dB@12.5KHz	Rated audio distortion	≤3%
Spurious emission	<-36dBm@1GHz >-30dBm@1GHz	Digital protocol	ETSITS102361-1,-2,-3
Adjacent channel selectivity	TIA 603C: 65dB@12.5KHZ ETSI: 65dB@12.5KHZ	Vocoder type	AMBE+2™

FCC STATEMENT

This device complies with Part 15 of the FCC Rules. Operation is subject to the following two conditions:

- (1) This device may not cause harmful interference, and
- (2) this device must accept any interference received, including interference that may cause undesired operation.

NOTE 1: This equipment has been tested and found to comply with the limits for a Class B digital device, pursuant to part 15 of the FCC Rules. These limits are designed to provide reasonable protection against harmful interference in a residential installation. This equipment generates, uses and can radiate radio frequency energy and, if not installed and used in accordance with the instructions, may cause harmful interference to radio communications. However, there is no guarantee that interference will not occur in a particular installation. If this equipment does cause harmful interference to radio or television reception, which can be determined by turning the equipment off and on, the user is encouraged to try to correct the interference by one or more of the following measures:

- Reorient or relocate the receiving antenna.
- Increase the separation between the equipment and receiver.
- Connect the equipment into an outlet on a circuit different from that to which the receiver is connected.
- Consult the dealer or an experienced radio/TV technician for help.

NOTE 2: Any changes or modifications to this unit not expressly approved by the party responsible for compliance could void the user's authority to operate the equipment.

RF Exposure Compliance and Control Guidelines and Operating Instructions

To control your exposure and ensure compliance with the occupational/controlled environment exposure limits always adhere to the following procedures.

Guidelines:

- Do not remove the RF Exposure Label from the device.
- User awareness instructions should accompany device when transferred to other users.
- Do not use this device if the operational requirements described herein are not met.

Operating Instructions:

- Transmit no more than the rated duty factor of 50% of the time. To transmit (talk), push the Push-To-Talk (PTT) button. To receive calls, release the PTT button. Transmitting 50 % of the time, or less, is important because this radio generates measurable RF energy exposure only when transmitting (in terms of measuring for standards compliance).
- Hold the radio in a vertical position in front of face with the microphone (and the other parts of the radio, including the antenna) at least one inch (2.5 cm) away from the nose. Keeping the radio at the proper distance is important because RF exposures decrease with distance from the antenna. Antenna should be kept away from eyes.
- When worn on the body, always place the radio in a REDELL's approved clip, holder, holster, case, or body harness for this product. Using approved body-worn accessories is important because the use of REDELL's or other manufacturer's non-approved accessories may result in exposure levels, which exceed the FCC's occupational/controlled environment RF exposure limits.
- Use only manufacturer's name approved supplied or replacement antennas, batteries, and accessories. Use of non-manufacturer-name approved antennas, batteries, and accessories may exceed the FCC RF exposure guidelines.
- For a list of REDELL's approved accessories (see the user manual), or (The manufacturer should include the appropriate bracketed item(s) in the manual.)
- For a list of RDELL's approved accessories (see the user manual)