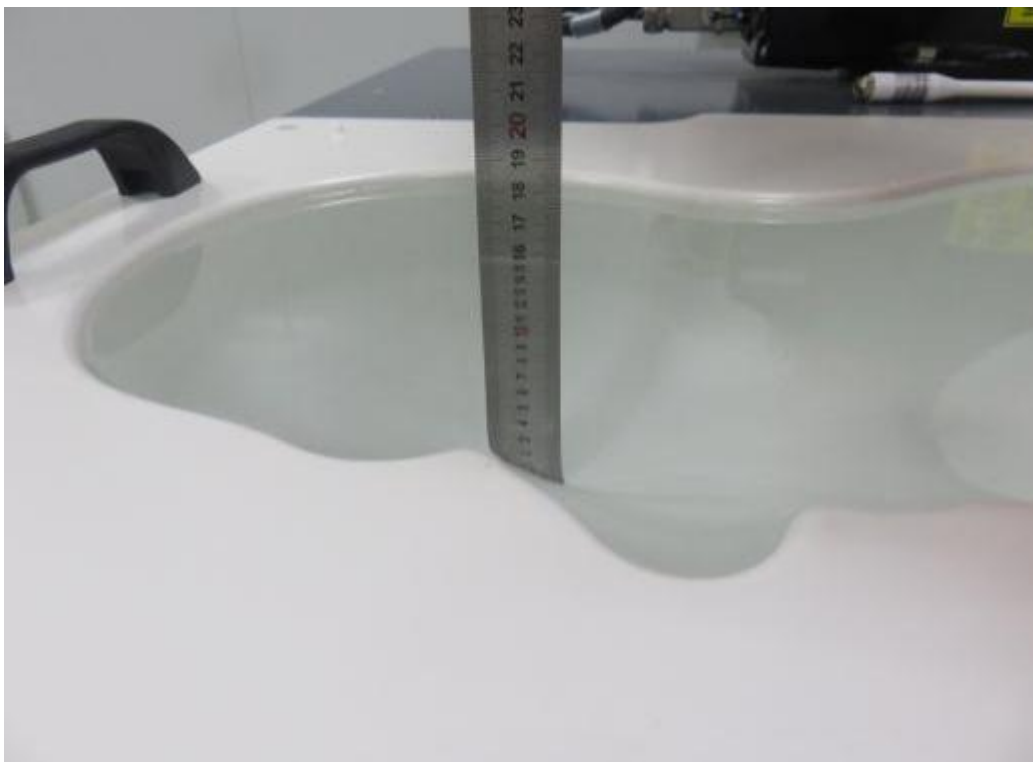
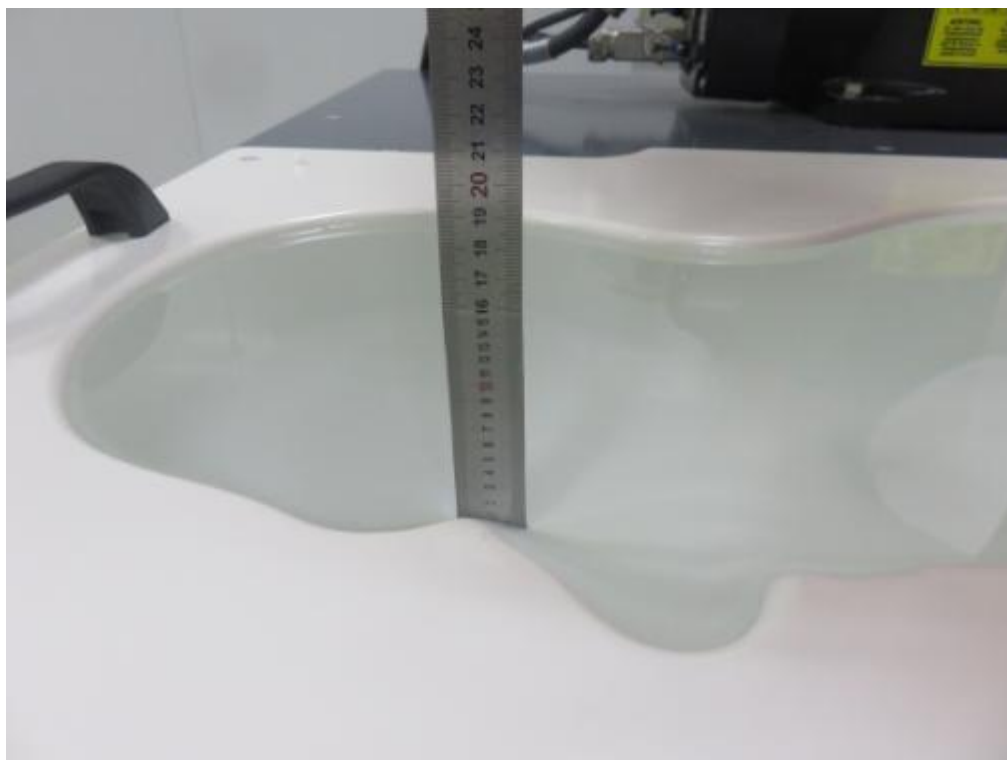


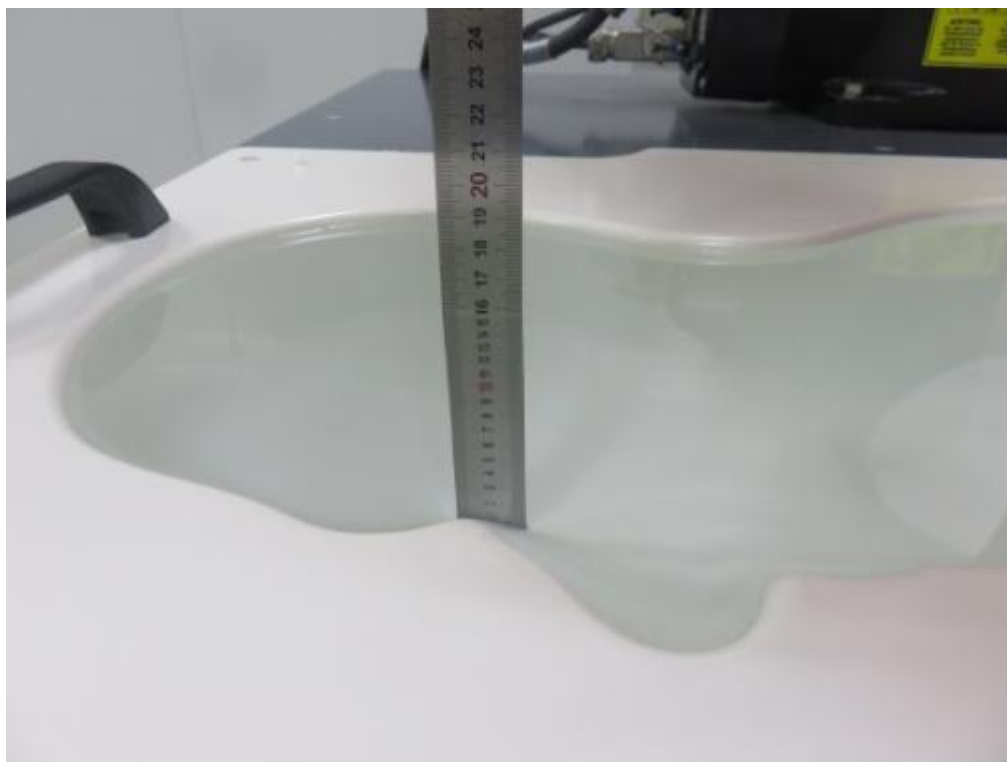
## **Photograph of liquid depth**



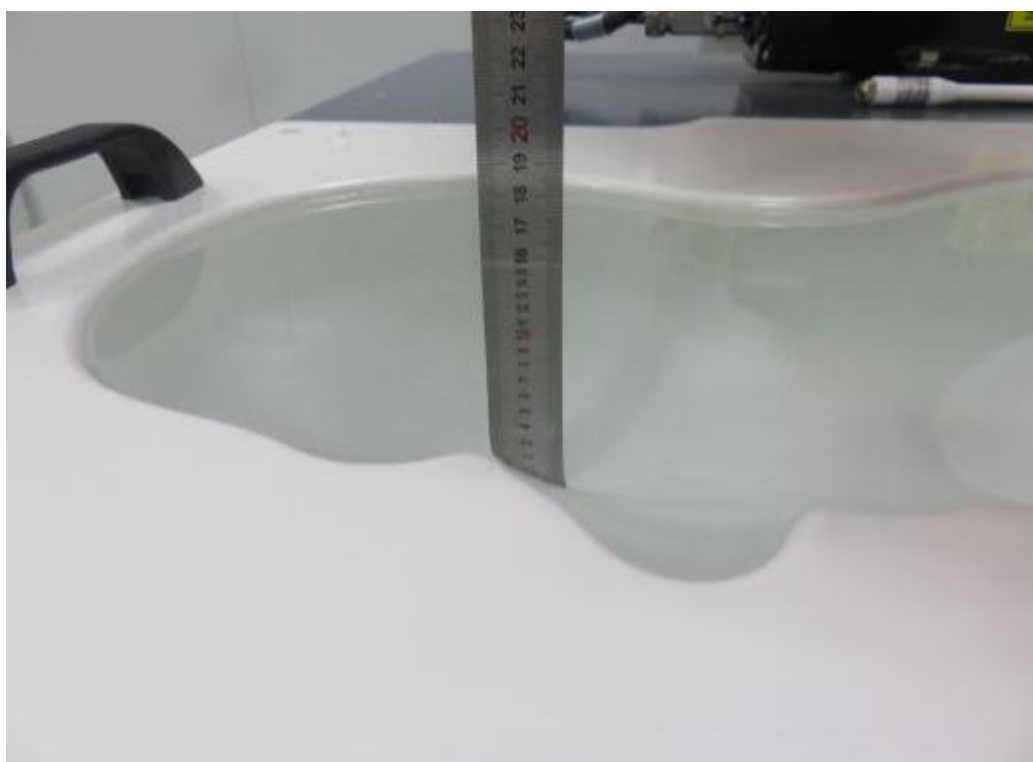
**Photograph of the depth in the Head Phantom (835MHz, 15.8cm depth)**



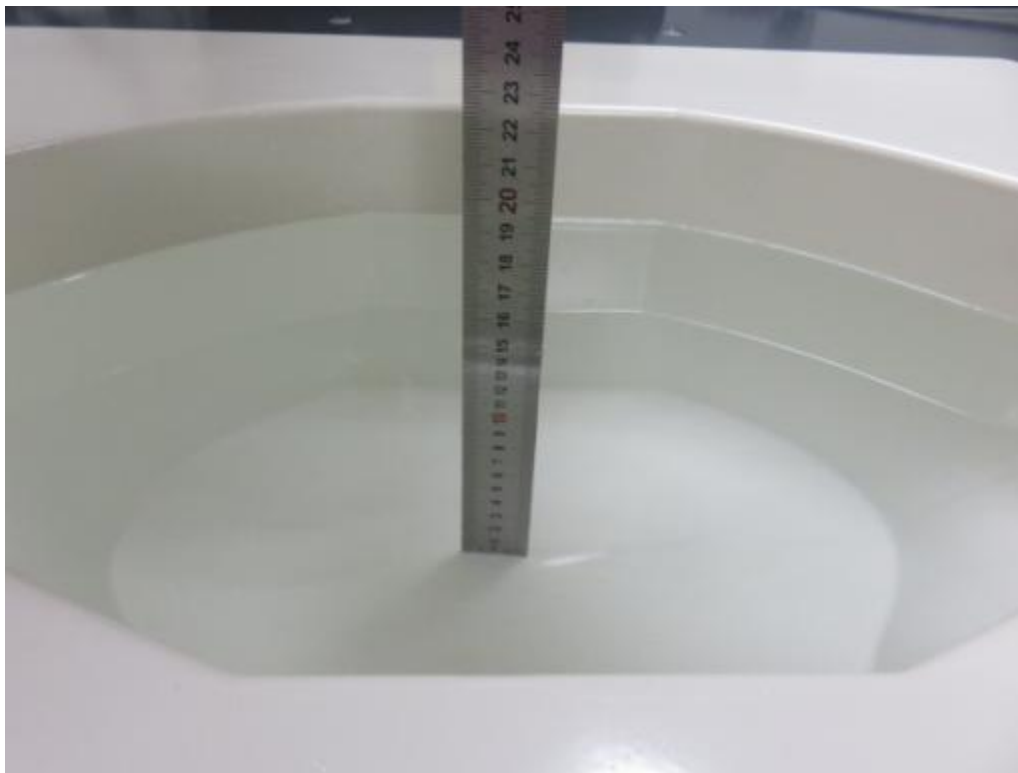
**Photograph of the depth in the Head Phantom (1900MHz, 15.7cm depth)**



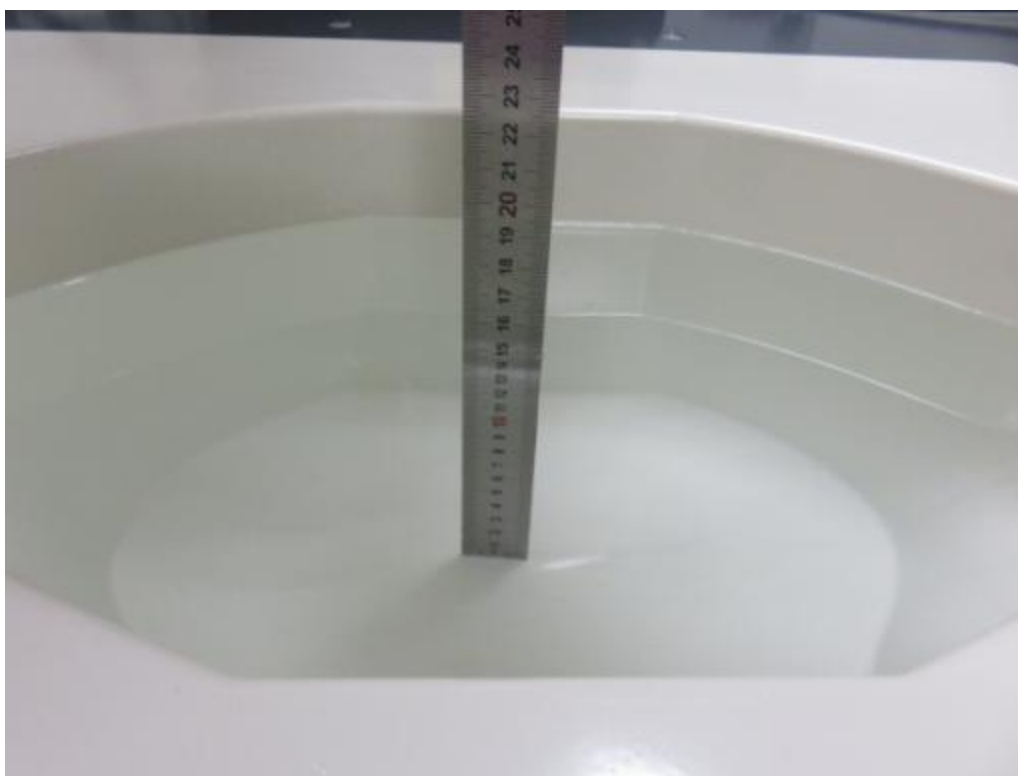
**Photograph of the depth in the Head Phantom (2450MHz, 15.8cm depth)**



**Photograph of the depth in the Head Phantom (2600MHz, 15.5cm depth)**



**Photograph of the depth in the Body Phantom (835MHz, 16.1cm depth)**



**Photograph of the depth in the Body Phantom (1900MHz, 16.0cm depth)**



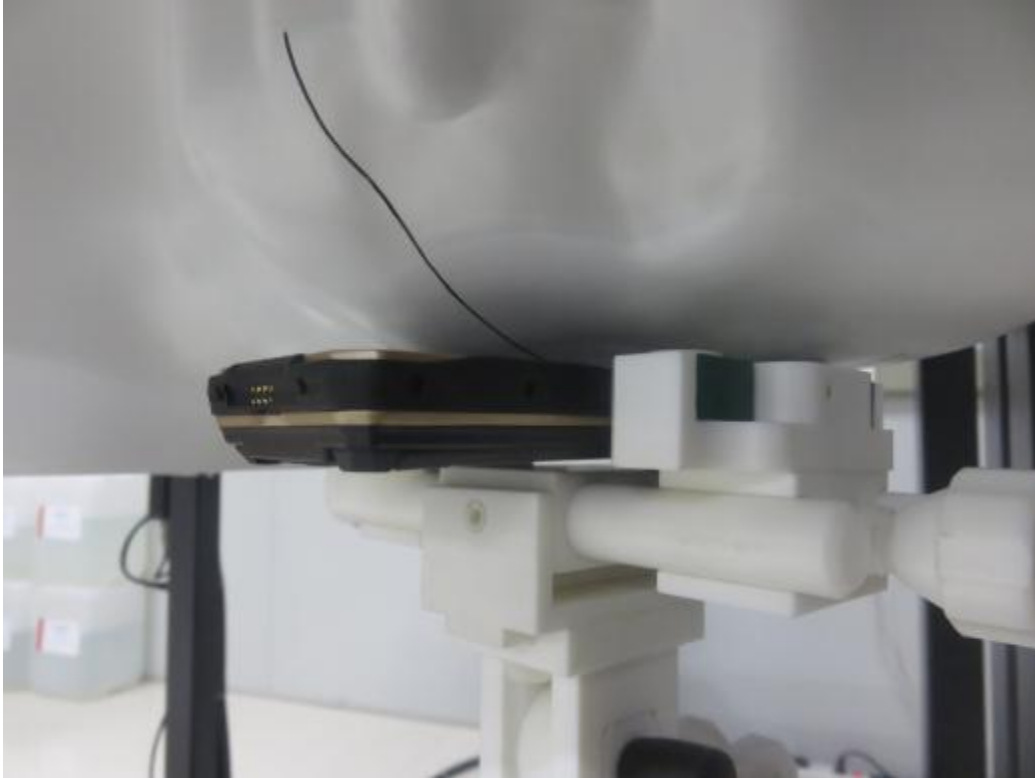
**Photograph of the depth in the Body Phantom (2450MHz, 15.6cm depth)**



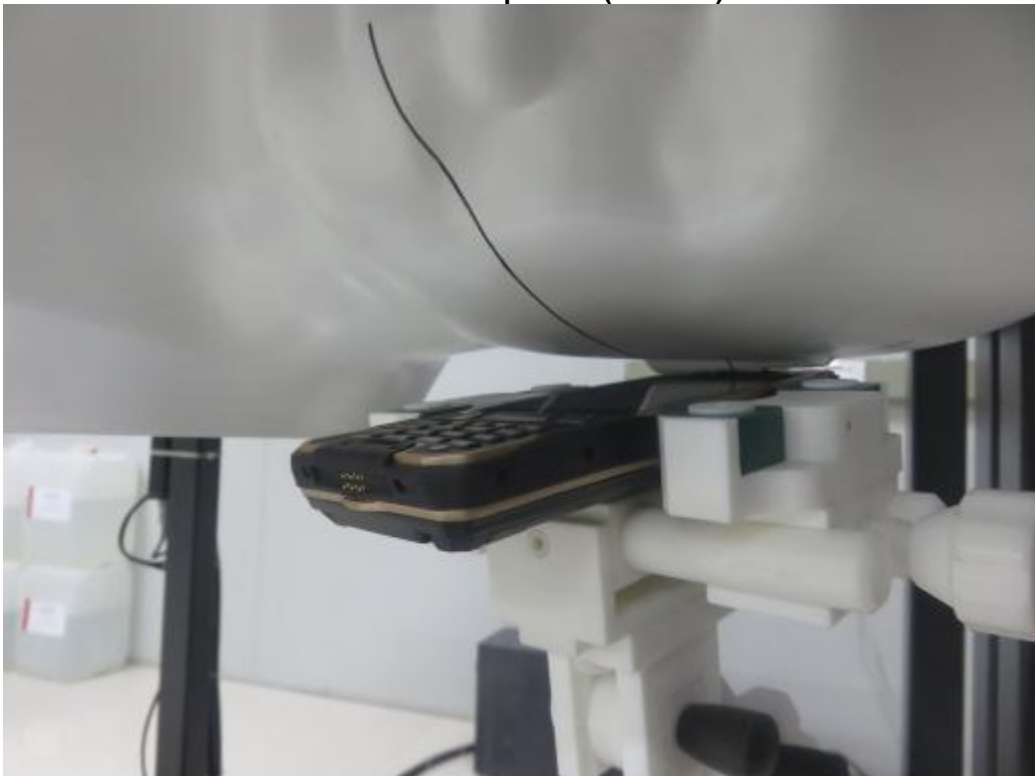
**Photograph of the depth in the Body Phantom (2600MHz, 16.2cm depth)**

## **Photograph of the Test**

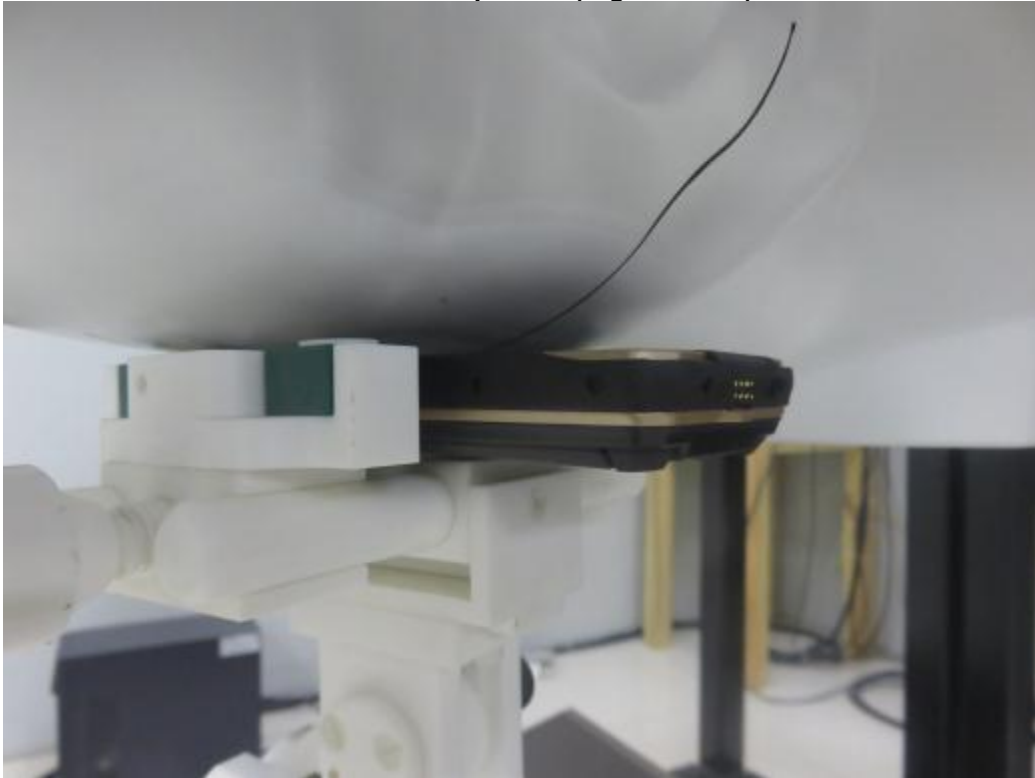
**Head Setup Photo(Left cheek)**



**Head Setup Photo(Left Tilt )**



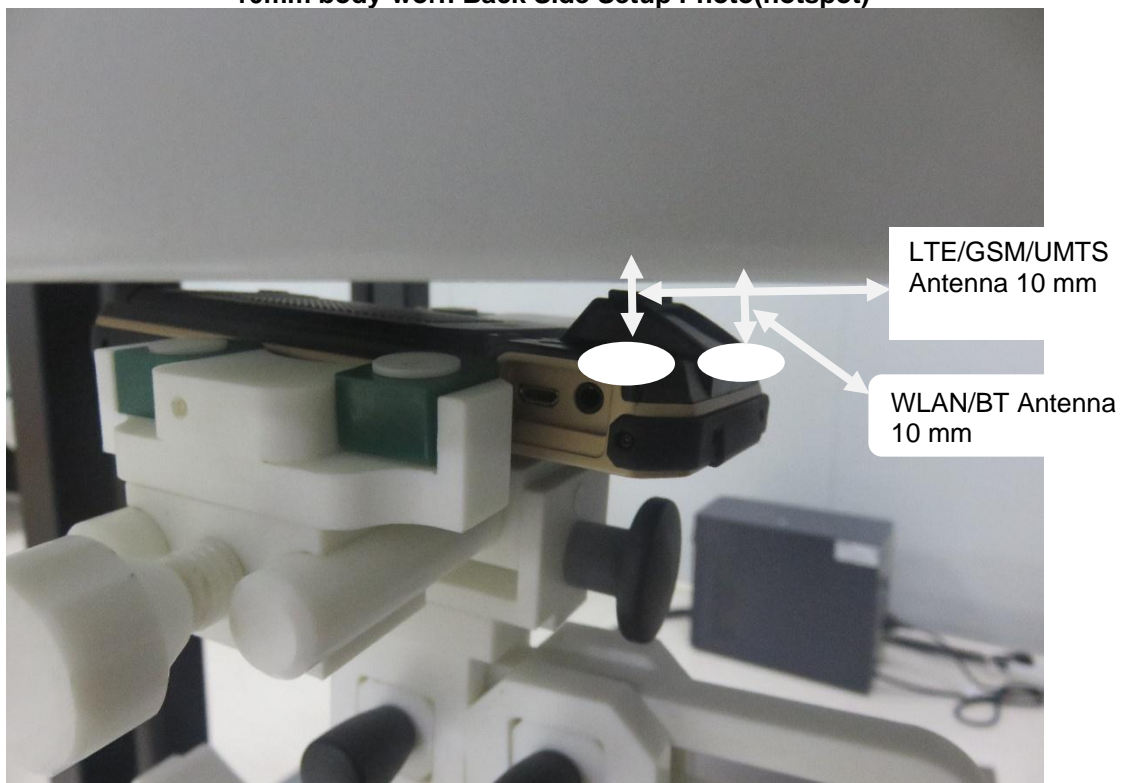
**Head Setup Photo(Right Cheek )**



**Head Setup Photo(Right Tilt )**



**10mm body-worn Back Side Setup Photo(hotspot)**



**10mm body-worn Front Side Setup Photo(hotspot)**

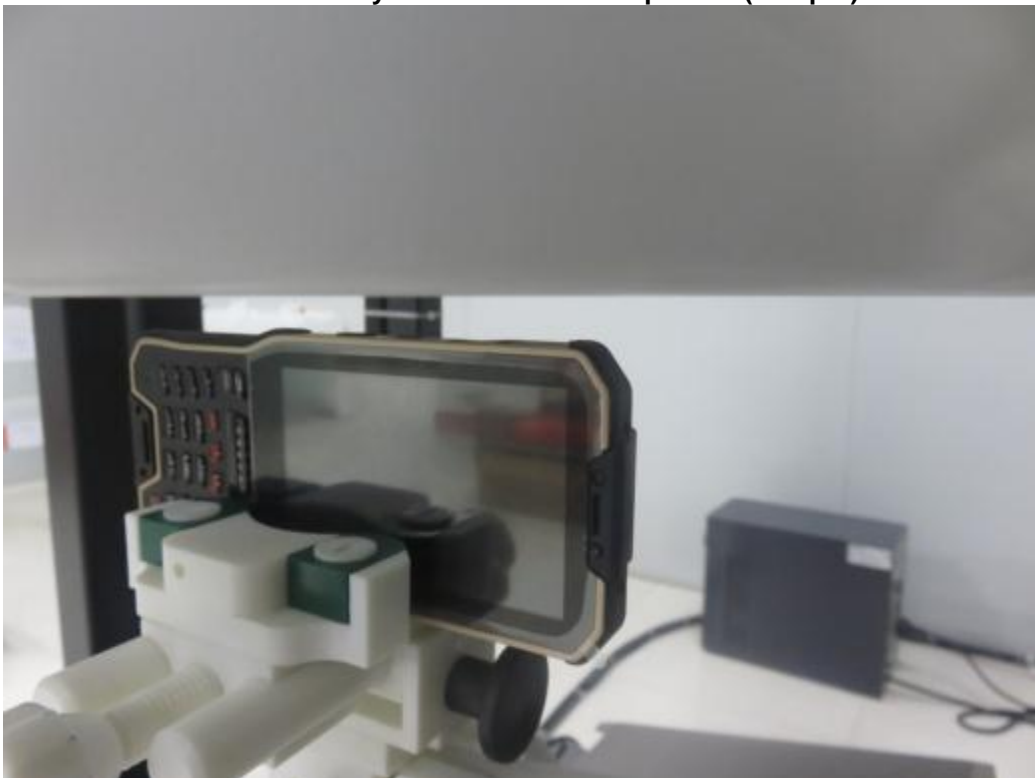




**10mm body-worn Right Side Setup Photo(hotspot)**



**10mm body-worn Left Side Setup Photo(hotspot)**





**10mm body-worn Top Side Setup Photo(hotspot)**



## EUT Photographs



