

## 9. CONDUCTED POWER RESULTS

### 9.1. UMTS Band

P-sensor off

Band	UMTS Band II Average Conducted Power(dBm)			
Tx Channel	Max. Tune-up power (dBm)	9262	9400	9538
Rx Channel		9662	9800	9938
Frequency		1852.4MHz	1880MHz	1907.6MHz
RMC 12.2K	24.50	24.34	24.39	24.33
HSDPA Subtest-1	24.50	24.26	24.31	24.26
HSDPA Subtest-2	24.00	23.76	23.83	23.76
HSDPA Subtest-3	23.50	23.27	23.34	23.31
HSDPA Subtest-4	23.50	23.31	23.38	23.28
HSUPA Subtest-1	24.50	24.21	24.23	24.22
HSUPA Subtest-2	22.50	22.23	22.28	22.23
HSUPA Subtest-3	23.50	23.26	23.27	23.23
HSUPA Subtest-4	22.50	22.26	22.24	22.25
HSUPA Subtest-5	24.50	24.16	24.16	24.13

P-sensor on

Band	UMTS Band II Average Conducted Power(dBm)			
Tx Channel	Max. Tune-up power (dBm)	9262	9400	9538
Rx Channel		9662	9800	9938
Frequency		1852.4MHz	1880MHz	1907.6MHz
RMC 12.2K	23.00	22.89	22.92	22.90
HSDPA Subtest-1	23.00	22.81	22.84	22.83
HSDPA Subtest-2	22.50	22.31	22.36	22.33
HSDPA Subtest-3	22.00	21.82	21.87	21.88
HSDPA Subtest-4	22.00	21.86	21.91	21.85
HSUPA Subtest-1	23.00	22.76	22.76	22.79
HSUPA Subtest-2	21.00	20.78	20.81	20.80
HSUPA Subtest-3	22.00	21.81	21.80	21.80
HSUPA Subtest-4	21.00	20.81	20.77	20.82
HSUPA Subtest-5	23.00	22.71	22.69	22.70

**P-sensor off**

Band	UMTS Band IV Average Conducted Power(dBm)			
Tx Channel	Max. Tune-up power (dBm)	1312	1413	1513
Rx Channel		1537	1652	1738
Frequency		1712.4MHz	1732.6MHz	1752.6MHz
RMC 12.2K	24.50	24.36	24.42	24.37
HSDPA Subtest-1	24.50	24.25	24.33	24.30
HSDPA Subtest-2	24.00	23.75	23.85	23.80
HSDPA Subtest-3	23.50	23.26	23.36	23.35
HSDPA Subtest-4	23.50	23.30	23.40	23.32
HSUPA Subtest-1	24.50	24.12	24.25	24.21
HSUPA Subtest-2	22.50	22.14	22.30	22.22
HSUPA Subtest-3	23.50	23.17	23.29	23.22
HSUPA Subtest-4	22.50	22.17	22.26	22.24
HSUPA Subtest-5	24.50	24.07	24.18	24.12

**P-sensor on**

Band	UMTS Band IV Average Conducted Power(dBm)			
Tx Channel	Max. Tune-up power (dBm)	1312	1413	1513
Rx Channel		1537	1652	1738
Frequency		1712.4MHz	1732.6MHz	1752.6MHz
RMC 12.2K	23.00	22.86	22.89	22.88
HSDPA Subtest-1	23.00	22.75	22.80	22.81
HSDPA Subtest-2	22.50	22.25	22.32	22.31
HSDPA Subtest-3	22.00	21.76	21.83	21.86
HSDPA Subtest-4	22.00	21.80	21.87	21.83
HSUPA Subtest-1	23.00	22.62	22.72	22.72
HSUPA Subtest-2	21.00	20.64	20.77	20.73
HSUPA Subtest-3	22.00	21.67	21.76	21.73
HSUPA Subtest-4	21.00	20.67	20.73	20.75
HSUPA Subtest-5	23.00	22.57	22.65	22.63

**P-sensor off**

Band	UMTS Band V Average Conducted Power(dBm)			
Tx Channel	Max. Tune-up power (dBm)	4132	4182	4233
Rx Channel		4357	4407	4458
Frequency		826.4MHz	836.4MHz	846.6MHz
RMC 12.2K	24.50	24.35	24.40	24.39
HSDPA Subtest-1	24.50	24.24	24.31	24.32
HSDPA Subtest-2	24.00	23.74	23.83	23.82
HSDPA Subtest-3	23.50	23.25	23.34	23.37
HSDPA Subtest-4	23.50	23.29	23.38	23.34
HSUPA Subtest-1	24.50	24.11	24.23	24.23
HSUPA Subtest-2	22.50	22.13	22.28	22.24
HSUPA Subtest-3	23.50	23.16	23.27	23.24
HSUPA Subtest-4	22.50	22.16	22.24	22.26
HSUPA Subtest-5	24.50	24.06	24.16	24.14

**P-sensor on**

Band	UMTS Band V Average Conducted Power(dBm)			
Tx Channel	Max. Tune-up power (dBm)	4132	4182	4233
Rx Channel		4357	4407	4458
Frequency		826.4MHz	836.4MHz	846.6MHz
RMC 12.2K	23.00	22.86	22.91	22.88
HSDPA Subtest-1	23.00	22.75	22.82	22.81
HSDPA Subtest-2	22.50	22.25	22.34	22.31
HSDPA Subtest-3	22.00	21.76	21.85	21.86
HSDPA Subtest-4	22.00	21.80	21.89	21.83
HSUPA Subtest-1	23.00	22.62	22.74	22.72
HSUPA Subtest-2	21.00	20.64	20.79	20.73
HSUPA Subtest-3	22.00	21.67	21.78	21.73
HSUPA Subtest-4	21.00	20.67	20.75	20.75
HSUPA Subtest-5	23.00	22.57	22.67	22.63

## 9.2. LTE Band

### LTE Band 2

P-sensor off

LTE B2/BW=1.4M		Average Conducted Power(dBm)				LTE B2/BW=3M		Average Conducted Power(dBm)			
Modulation	RB Size/Offset	Max. Tune-up (dBm)	Channel/Frequency(MHz)			Modulation	RB Size/Offset	Max. Tune-up (dBm)	Channel/Frequency(MHz)		
			18607/1850.7	18900/1880.0	19192/1909.2				18615/1851.5	18900/1880.0	19184/1908.4
QPSK	1/0	24.00	23.45	23.51	23.48	QPSK	1/0	24.00	23.49	23.55	23.52
	1/12	24.00	23.34	23.43	23.34		1/12	24.00	23.38	23.47	23.38
	1/24	24.00	23.25	23.35	23.26		1/49	24.00	23.29	23.39	23.30
	12/0	23.00	22.54	22.60	22.57		25/0	23.00	22.58	22.64	22.61
	12/6	23.00	22.39	22.48	22.39		25/12	23.00	22.43	22.52	22.43
	12/11	23.00	22.32	22.42	22.33		25/24	23.00	22.36	22.46	22.37
	25/0	23.00	22.49	22.55	22.52		50/0	23.00	22.53	22.59	22.56
16QAM	1/0	23.00	22.52	22.58	22.55	16QAM	1/0	23.00	22.56	22.62	22.59
	1/12	23.00	22.42	22.51	22.42		1/24	23.00	22.46	22.55	22.46
	1/24	23.00	22.35	22.45	22.36		1/49	23.00	22.39	22.49	22.40
	12/0	22.00	21.44	21.47	21.41		25/0	22.00	21.48	21.51	21.45
	12/6	22.00	21.31	21.35	21.24		25/12	22.00	21.35	21.39	21.28
	12/11	22.00	21.20	21.25	21.36		25/24	22.00	21.24	21.29	21.40
	25/0	22.00	21.41	21.37	21.36		50/0	22.00	21.45	21.41	21.40
LTE B2/BW=5M		Average Conducted Power(dBm)				LTE B2/BW=10M		Average Conducted Power(dBm)			
Modulation	RB Size/Offset	Max. Tune-up (dBm)	Channel/Frequency(MHz)			Modulation	RB Size/Offset	Max. Tune-up (dBm)	Channel/Frequency(MHz)		
			18625/1852.5	18900/1880	19175/1907.5				18650/1855	18900/1880	19150/1905
QPSK	1/0	24.00	23.57	23.63	23.60	QPSK	1/0	24.00	23.64	23.70	23.67
	1/37	24.00	23.46	23.55	23.46		1/49	24.00	23.53	23.62	23.53
	1/74	24.00	23.37	23.47	23.38		1/99	24.00	23.44	23.54	23.45
	36/0	23.00	22.66	22.72	22.69		50/0	23.00	22.73	22.79	22.76
	36/18	23.00	22.51	22.60	22.51		50/24	23.00	22.58	22.67	22.58
	36/35	23.00	22.44	22.54	22.45		50/49	23.00	22.51	22.61	22.52
	75/0	23.00	22.61	22.67	22.64		100/0	23.00	22.68	22.74	22.71
16QAM	1/0	23.00	22.64	22.70	22.67	16QAM	1/0	23.00	22.71	22.77	22.74
	1/37	23.00	22.54	22.63	22.54		1/49	23.00	22.61	22.70	22.61
	1/74	23.00	22.47	22.57	22.48		1/99	23.00	22.54	22.64	22.55
	36/0	22.00	21.56	21.59	21.53		50/0	22.00	21.63	21.66	21.60
	36/18	22.00	21.43	21.47	21.36		50/24	22.00	21.50	21.54	21.43
	36/35	22.00	21.32	21.37	21.48		50/49	22.00	21.39	21.44	21.55
	75/0	22.00	21.53	21.49	21.48		100/0	22.00	21.60	21.56	21.55

LTE B2/BW=15M		Average Conducted Power(dBm)				LTE B2/BW=20M		Average Conducted Power(dBm)			
Modulation	RB Size/Offset	Max. Tune-up (dBm)	Channel/Frequency(MHz)			Modulation	RB Size/Offset	Max. Tune-up (dBm)	Channel/Frequency(MHz)		
			18675/1857.5	18900/1880	19125/1902.5				18700/1860	18900/1880	19100/1900
QPSK	1/0	24.00	23.69	23.75	23.72	QPSK	1/0	24.00	23.82	23.88	23.85
	1/37	24.00	23.58	23.67	23.58		1/49	24.00	23.71	23.80	23.71
	1/74	24.00	23.49	23.59	23.50		1/99	24.00	23.62	23.72	23.63
	36/0	23.00	22.78	22.84	22.81		50/0	23.00	22.91	22.97	22.94
	36/18	23.00	22.63	22.72	22.63		50/24	23.00	22.76	22.85	22.76
	36/35	23.00	22.56	22.66	22.57		50/49	23.00	22.69	22.79	22.70
	75/0	23.00	22.73	22.79	22.76		100/0	23.00	22.86	22.92	22.89
16QAM	1/0	23.00	22.76	22.82	22.79	16QAM	1/0	23.00	22.89	22.95	22.92
	1/37	23.00	22.66	22.75	22.66		1/49	23.00	22.79	22.88	22.79
	1/74	23.00	22.59	22.69	22.60		1/99	23.00	22.72	22.82	22.73
	36/0	22.00	21.68	21.71	21.65		50/0	22.00	21.81	21.84	21.78
	36/18	22.00	21.55	21.59	21.48		50/24	22.00	21.68	21.72	21.61
	36/35	22.00	21.44	21.49	21.60		50/49	22.00	21.57	21.62	21.73
	75/0	22.00	21.65	21.61	21.60		100/0	22.00	21.78	21.74	21.73

**P-sensor on**

LTE B2/BW=1.4M		Average Conducted Power(dBm)				LTE B2/BW=3M		Average Conducted Power(dBm)			
Modulation	RB Size/Offset	Max. Tune-up (dBm)	Channel/Frequency(MHz)			Modulation	RB Size/Offset	Max. Tune-up (dBm)	Channel/Frequency(MHz)		
			18607/1850.7	18900/1880.0	19192/1909.2				18615/1851.5	18900/1880.0	19184/1908.4
QPSK	1/0	23.00	22.51	22.53	22.48	QPSK	1/0	23.00	22.55	22.57	22.52
	1/12	23.00	22.41	22.45	22.35		1/12	23.00	22.45	22.49	22.39
	1/24	23.00	22.28	22.36	22.27		1/49	23.00	22.32	22.40	22.31
	12/0	22.00	21.60	21.62	21.57		25/0	22.00	21.64	21.66	21.61
	12/6	22.00	21.46	21.50	21.40		25/12	22.00	21.50	21.54	21.44
	12/11	22.00	21.35	21.43	21.34		25/24	22.00	21.39	21.47	21.38
	25/0	22.00	21.55	21.57	21.52		50/0	22.00	21.59	21.61	21.56
16QAM	1/0	22.00	21.58	21.60	21.55	16QAM	1/0	22.00	21.62	21.64	21.59
	1/12	22.00	21.49	21.53	21.43		1/24	22.00	21.53	21.57	21.47
	1/24	22.00	21.38	21.46	21.37		1/49	22.00	21.42	21.50	21.41
	12/0	21.00	20.50	20.49	20.41		25/0	21.00	20.54	20.53	20.45
	12/6	21.00	20.38	20.37	20.25		25/12	21.00	20.42	20.41	20.29
	12/11	21.00	20.23	20.26	20.37		25/24	21.00	20.27	20.30	20.41
	25/0	21.00	20.47	20.39	20.36		50/0	21.00	20.51	20.43	20.40

LTE B2/BW=5M		Average Conducted Power(dBm)				LTE B2/BW=10M		Average Conducted Power(dBm)			
Modulation	RB Size/Offset	Max. Tune-up (dBm)	Channel/Frequency(MHz)			Modulation	RB Size/Offset	Max. Tune-up (dBm)	Channel/Frequency(MHz)		
			18625/1852.5	18900/1880	19175/1907.5				18650/1855	18900/1880	19150/1905
QPSK	1/0	23.00	22.63	22.65	22.60	QPSK	1/0	23.00	22.70	22.72	22.67
	1/12	23.00	22.53	22.57	22.47		1/12	23.00	22.60	22.64	22.54
	1/24	23.00	22.40	22.48	22.39		1/49	23.00	22.47	22.55	22.46
	12/0	22.00	21.72	21.74	21.69		25/0	22.00	21.79	21.81	21.76
	12/6	22.00	21.58	21.62	21.52		25/12	22.00	21.65	21.69	21.59
	12/11	22.00	21.47	21.55	21.46		25/24	22.00	21.54	21.62	21.53
	25/0	22.00	21.67	21.69	21.64		50/0	22.00	21.74	21.76	21.71
16QAM	1/0	22.00	21.70	21.72	21.67	16QAM	1/0	22.00	21.77	21.79	21.74
	1/12	22.00	21.61	21.65	21.55		1/24	22.00	21.68	21.72	21.62
	1/24	22.00	21.50	21.58	21.49		1/49	22.00	21.57	21.65	21.56
	12/0	21.00	20.62	20.61	20.53		25/0	21.00	20.69	20.68	20.60
	12/6	21.00	20.50	20.49	20.37		25/12	21.00	20.57	20.56	20.44
	12/11	21.00	20.35	20.38	20.49		25/24	21.00	20.42	20.45	20.56
	25/0	21.00	20.59	20.51	20.48		50/0	21.00	20.66	20.58	20.55
LTE B2/BW=15M		Average Conducted Power(dBm)				LTE B2/BW=20M		Average Conducted Power(dBm)			
Modulation	RB Size/Offset	Max. Tune-up (dBm)	Channel/Frequency(MHz)			Modulation	RB Size/Offset	Max. Tune-up (dBm)	Channel/Frequency(MHz)		
			18675/1857.5	18900/1880	19125/1902.5				18700/1860	18900/1880	19100/1900
QPSK	1/0	23.00	22.75	22.77	22.72	QPSK	1/0	23.00	22.88	22.90	22.85
	1/37	23.00	22.65	22.69	22.59		1/49	23.00	22.78	22.82	22.72
	1/74	23.00	22.52	22.60	22.51		1/99	23.00	22.65	22.73	22.64
	36/0	22.00	21.84	21.86	21.81		50/0	22.00	21.97	21.99	21.94
	36/18	22.00	21.70	21.74	21.64		50/24	22.00	21.83	21.87	21.77
	36/35	22.00	21.59	21.67	21.58		50/49	22.00	21.72	21.80	21.71
	75/0	22.00	21.79	21.81	21.76		100/0	22.00	21.92	21.94	21.89
16QAM	1/0	22.00	21.82	21.84	21.79	16QAM	1/0	22.00	21.95	21.97	21.92
	1/37	22.00	21.73	21.77	21.67		1/49	22.00	21.86	21.90	21.80
	1/74	22.00	21.62	21.70	21.61		1/99	22.00	21.75	21.83	21.74
	36/0	21.00	20.74	20.73	20.65		50/0	21.00	20.87	20.86	20.78
	36/18	21.00	20.62	20.61	20.49		50/24	21.00	20.75	20.74	20.62
	36/35	21.00	20.47	20.50	20.61		50/49	21.00	20.60	20.63	20.74
	75/0	21.00	20.71	20.63	20.60		100/0	21.00	20.84	20.76	20.73



**LTE Band 4**
**P-sensor off**

LTE B4/BW=1.4M		Average Conducted Power(dBm)				LTE B4/BW=3M		Average Conducted Power(dBm)			
Modulation	RB Size/Offset	Max. Tune-up (dBm)	Channel/Frequency(MHz)			Modulation	RB Size/Offset	Max. Tune-up (dBm)	Channel/Frequency(MHz)		
			19957/1710.7	20175/1732.5	20392/1754.2				19965/1711.5	20175/1732.5	20384/1753.4
QPSK	1/0	24.00	23.43	23.46	23.44	QPSK	1/0	24.00	23.51	23.54	23.52
	1/12	24.00	23.30	23.35	23.32		1/12	24.00	23.38	23.43	23.40
	1/24	24.00	23.23	23.29	23.26		1/49	24.00	23.31	23.37	23.34
	12/0	23.00	22.52	22.50	22.53		25/0	23.00	22.60	22.58	22.61
	12/6	23.00	22.35	22.42	22.37		25/12	23.00	22.43	22.50	22.45
	12/11	23.00	22.30	22.36	22.33		25/24	23.00	22.38	22.44	22.41
	25/0	23.00	22.47	22.50	22.48		50/0	23.00	22.55	22.58	22.56
16QAM	1/0	23.00	22.50	22.53	22.51	16QAM	1/0	23.00	22.58	22.61	22.59
	1/12	23.00	22.38	22.43	22.40		1/24	23.00	22.46	22.51	22.48
	1/24	23.00	22.33	22.39	22.36		1/49	23.00	22.41	22.47	22.44
	12/0	22.00	21.40	21.46	21.57		25/0	22.00	21.48	21.54	21.65
	12/6	22.00	21.24	21.33	21.40		25/12	22.00	21.32	21.41	21.48
	12/11	22.00	21.15	21.25	21.36		25/24	22.00	21.23	21.33	21.44
	25/0	22.00	21.33	21.39	21.51		50/0	22.00	21.41	21.47	21.59
LTE B4/BW=5M		Average Conducted Power(dBm)				LTE B4/BW=10M		Average Conducted Power(dBm)			
Modulation	RB Size/Offset	Max. Tune-up (dBm)	Channel/Frequency(MHz)			Modulation	RB Size/Offset	Max. Tune-up (dBm)	Channel/Frequency(MHz)		
			19975/1712.5	20175/1732.5	20375/1752.5				20000/1715	20175/1732.5	20350/1750
QPSK	1/0	24.00	23.56	23.59	23.57	QPSK	1/0	24.00	23.60	23.63	23.61
	1/37	24.00	23.43	23.48	23.45		1/49	24.00	23.47	23.52	23.49
	1/74	24.00	23.36	23.42	23.39		1/99	24.00	23.40	23.46	23.43
	36/0	23.00	22.65	22.63	22.66		50/0	23.00	22.69	22.67	22.70
	36/18	23.00	22.48	22.55	22.50		50/24	23.00	22.52	22.59	22.54
	36/35	23.00	22.43	22.49	22.46		50/49	23.00	22.47	22.53	22.50
	75/0	23.00	22.60	22.63	22.61		100/0	23.00	22.64	22.67	22.65
16QAM	1/0	23.00	22.63	22.66	22.64	16QAM	1/0	23.00	22.67	22.70	22.68
	1/37	23.00	22.51	22.56	22.53		1/49	23.00	22.55	22.60	22.57
	1/74	23.00	22.46	22.52	22.49		1/99	23.00	22.50	22.56	22.53
	36/0	22.00	21.53	21.59	21.70		50/0	22.00	21.57	21.63	21.74
	36/18	22.00	21.37	21.46	21.53		50/24	22.00	21.41	21.50	21.57
	36/35	22.00	21.28	21.38	21.49		50/49	22.00	21.32	21.42	21.53
	75/0	22.00	21.46	21.52	21.64		100/0	22.00	21.50	21.56	21.68

LTE B4/BW=15M		Average Conducted Power(dBm)				LTE B4/BW=20M		Average Conducted Power(dBm)			
Modulation	RB Size/Offset	Max. Tune-up (dBm)	Channel/Frequency(MHz)			Modulation	RB Size/Offset	Max. Tune-up (dBm)	Channel/Frequency(MHz)		
			20025/1717.5	20175/1732.5	20325/1747.5				20050/1720	20175/1732.5	20300/1745
QPSK	1/0	24.00	23.69	23.72	23.70	QPSK	1/0	24.00	23.82	23.85	23.83
	1/37	24.00	23.56	23.61	23.58		1/49	24.00	23.69	23.74	23.71
	1/74	24.00	23.49	23.55	23.52		1/99	24.00	23.62	23.68	23.65
	36/0	23.00	22.78	22.76	22.79		50/0	23.00	22.91	22.89	22.92
	36/18	23.00	22.61	22.68	22.63		50/24	23.00	22.74	22.81	22.76
	36/35	23.00	22.56	22.62	22.59		50/49	23.00	22.69	22.75	22.72
	75/0	23.00	22.73	22.76	22.74		100/0	23.00	22.86	22.89	22.87
16QAM	1/0	23.00	22.76	22.79	22.77	16QAM	1/0	23.00	22.89	22.92	22.90
	1/37	23.00	22.64	22.69	22.66		1/49	23.00	22.77	22.82	22.79
	1/74	23.00	22.59	22.65	22.62		1/99	23.00	22.72	22.78	22.75
	36/0	22.00	21.66	21.72	21.83		50/0	22.00	21.79	21.85	21.96
	36/18	22.00	21.50	21.59	21.66		50/24	22.00	21.63	21.72	21.79
	36/35	22.00	21.41	21.51	21.62		50/49	22.00	21.54	21.64	21.75
	75/0	22.00	21.59	21.65	21.77		100/0	22.00	21.72	21.78	21.90

**P-sensor on**

LTE B4/BW=1.4M		Average Conducted Power(dBm)				LTE B4/BW=3M		Average Conducted Power(dBm)			
Modulation	RB Size/Offset	Max. Tune-up (dBm)	Channel/Frequency(MHz)			Modulation	RB Size/Offset	Max. Tune-up (dBm)	Channel/Frequency(MHz)		
			19957/1710.7	20175/1732.5	20392/1754.2				19965/1711.5	20175/1732.5	20384/1753.4
QPSK	1/0	23.00	22.48	22.50	22.47	QPSK	1/0	23.00	22.56	22.58	22.55
	1/12	23.00	22.37	22.38	22.36		1/12	23.00	22.45	22.46	22.44
	1/24	23.00	22.23	22.32	22.24		1/49	23.00	22.31	22.40	22.32
	12/0	22.00	21.57	21.54	21.56		25/0	22.00	21.65	21.62	21.64
	12/6	22.00	21.42	21.45	21.41		25/12	22.00	21.50	21.53	21.49
	12/11	22.00	21.30	21.39	21.31		25/24	22.00	21.38	21.47	21.39
	25/0	22.00	21.52	21.54	21.51		50/0	22.00	21.60	21.62	21.59
16QAM	1/0	22.00	21.55	21.57	21.54	16QAM	1/0	22.00	21.63	21.65	21.62
	1/12	22.00	21.45	21.46	21.44		1/24	22.00	21.53	21.54	21.52
	1/24	22.00	21.33	21.42	21.34		1/49	22.00	21.41	21.50	21.42
	12/0	21.00	20.45	20.50	20.60		25/0	21.00	20.53	20.58	20.68
	12/6	21.00	20.31	20.36	20.44		25/12	21.00	20.39	20.44	20.52
	12/11	21.00	20.15	20.28	20.34		25/24	21.00	20.23	20.36	20.42
	25/0	21.00	20.38	20.43	20.54		50/0	21.00	20.46	20.51	20.62

LTE B4/BW=5M		Average Conducted Power(dBm)				LTE B4/BW=10M		Average Conducted Power(dBm)			
Modulation	RB Size/Offset	Max. Tune-up (dBm)	Channel/Frequency(MHz)			Modulation	RB Size/Offset	Max. Tune-up (dBm)	Channel/Frequency(MHz)		
			19975/1712.5	20175/1732.5	20375/1752.5				20000/1715	20175/1732.5	20350/1750
QPSK	1/0	23.00	22.61	22.63	22.60	QPSK	1/0	23.00	22.65	22.67	22.64
	1/12	23.00	22.50	22.51	22.49		1/12	23.00	22.54	22.55	22.53
	1/24	23.00	22.36	22.45	22.37		1/49	23.00	22.40	22.49	22.41
	12/0	22.00	21.70	21.67	21.69		25/0	22.00	21.74	21.71	21.73
	12/6	22.00	21.55	21.58	21.54		25/12	22.00	21.59	21.62	21.58
	12/11	22.00	21.43	21.52	21.44		25/24	22.00	21.47	21.56	21.48
	25/0	22.00	21.65	21.67	21.64		50/0	22.00	21.69	21.71	21.68
16QAM	1/0	22.00	21.68	21.70	21.67	16QAM	1/0	22.00	21.72	21.74	21.71
	1/12	22.00	21.58	21.59	21.57		1/24	22.00	21.62	21.63	21.61
	1/24	22.00	21.46	21.55	21.47		1/49	22.00	21.50	21.59	21.51
	12/0	21.00	20.58	20.63	20.73		25/0	21.00	20.62	20.67	20.77
	12/6	21.00	20.44	20.49	20.57		25/12	21.00	20.48	20.53	20.61
	12/11	21.00	20.28	20.41	20.47		25/24	21.00	20.32	20.45	20.51
	25/0	21.00	20.51	20.56	20.67		50/0	21.00	20.55	20.60	20.71
LTE B4/BW=15M		Average Conducted Power(dBm)				LTE B4/BW=20M		Average Conducted Power(dBm)			
Modulation	RB Size/Offset	Max. Tune-up (dBm)	Channel/Frequency(MHz)			Modulation	RB Size/Offset	Max. Tune-up (dBm)	Channel/Frequency(MHz)		
			20025/1717.5	20175/1732.5	20325/1747.5				20050/1720	20175/1732.5	20300/1745
QPSK	1/0	23.00	22.74	22.76	22.73	QPSK	1/0	23.00	22.87	22.89	22.86
	1/37	23.00	22.63	22.64	22.62		1/49	23.00	22.76	22.77	22.75
	1/74	23.00	22.49	22.58	22.50		1/99	23.00	22.62	22.71	22.63
	36/0	22.00	21.83	21.80	21.82		50/0	22.00	21.96	21.93	21.95
	36/18	22.00	21.68	21.71	21.67		50/24	22.00	21.81	21.84	21.80
	36/35	22.00	21.56	21.65	21.57		50/49	22.00	21.69	21.78	21.70
	75/0	22.00	21.78	21.80	21.77		100/0	22.00	21.91	21.93	21.90
16QAM	1/0	22.00	21.81	21.83	21.80	16QAM	1/0	22.00	21.94	21.96	21.93
	1/37	22.00	21.71	21.72	21.70		1/49	22.00	21.84	21.85	21.83
	1/74	22.00	21.59	21.68	21.60		1/99	22.00	21.72	21.81	21.73
	36/0	21.00	20.71	20.76	20.86		50/0	21.00	20.84	20.89	20.99
	36/18	21.00	20.57	20.62	20.70		50/24	21.00	20.70	20.75	20.83
	36/35	21.00	20.41	20.54	20.60		50/49	21.00	20.54	20.67	20.73
	75/0	21.00	20.64	20.69	20.80		100/0	21.00	20.77	20.82	20.93

**LTE Band 5**
**P-sensor off**

LTE B5/BW=1.4M		Average Conducted Power(dBm)				LTE B5/BW=3M		Average Conducted Power(dBm)			
Modulation	RB Size/Offset	Max. Tune-up (dBm)	Channel/Frequency(MHz)			Modulation	RB Size/Offset	Max. Tune-up (dBm)	Channel/Frequency(MHz)		
			20407/824.	20525/836.5	20642/848.2				20415/825.5	20525/836.5	20634/847.4
QPSK	1/0	25.00	24.62	24.65	24.62	QPSK	1/0	25.00	24.69	24.72	24.69
	1/12	25.00	24.52	24.56	24.51		1/24	25.00	24.59	24.63	24.58
	1/24	25.00	24.43	24.47	24.44		1/49	25.00	24.50	24.54	24.51
	12/0	24.00	23.71	23.74	23.71		25/0	24.00	23.78	23.81	23.78
	12/6	24.00	23.57	23.61	23.56		25/12	24.00	23.64	23.68	23.63
	12/11	24.00	23.50	23.54	23.51		25/24	24.00	23.57	23.61	23.58
	25/0	24.00	23.66	23.69	23.66		50/0	24.00	23.73	23.76	23.73
16QAM	1/0	24.00	23.69	23.72	23.69	16QAM	1/0	24.00	23.76	23.79	23.76
	1/12	24.00	23.60	23.64	23.59		1/24	24.00	23.67	23.71	23.66
	1/24	24.00	23.53	23.57	23.54		1/49	24.00	23.60	23.64	23.61
	12/0	23.00	22.61	22.61	22.55		25/0	23.00	22.68	22.68	22.62
	12/6	23.00	22.49	22.48	22.41		25/12	23.00	22.56	22.55	22.48
	12/11	23.00	22.38	22.37	22.54		25/24	23.00	22.45	22.44	22.61
	25/0	23.00	22.58	22.51	22.50		50/0	23.00	22.65	22.58	22.57
LTE B5/BW=5M		Average Conducted Power(dBm)				LTE B5/BW=10M		Average Conducted Power(dBm)			
Modulation	RB Size/Offset	Max. Tune-up (dBm)	Channel/Frequency(MHz)			Modulation	RB Size/Offset	Max. Tune-up (dBm)	Channel/Frequency(MHz)		
			20415/825.5	20525/836.5	20634/847.4				20450/829	20525/836.5	20600/844
QPSK	1/0	25.00	24.74	24.77	24.74	QPSK	1/0	25.00	24.87	24.90	24.87
	1/12	25.00	24.64	24.68	24.63		1/24	25.00	24.77	24.81	24.76
	1/24	25.00	24.55	24.59	24.56		1/49	25.00	24.68	24.72	24.69
	12/0	24.00	23.83	23.86	23.83		25/0	24.00	23.96	23.99	23.96
	12/6	24.00	23.69	23.73	23.68		25/12	24.00	23.82	23.86	23.81
	12/11	24.00	23.62	23.66	23.63		25/24	24.00	23.75	23.79	23.76
	25/0	24.00	23.78	23.81	23.78		50/0	24.00	23.91	23.94	23.91
16QAM	1/0	24.00	23.81	23.84	23.81	16QAM	1/0	24.00	23.94	23.97	23.94
	1/12	24.00	23.72	23.76	23.71		1/24	24.00	23.85	23.89	23.84
	1/24	24.00	23.65	23.69	23.66		1/49	24.00	23.78	23.82	23.79
	12/0	23.00	22.73	22.73	22.67		25/0	23.00	22.86	22.86	22.80
	12/6	23.00	22.61	22.60	22.53		25/12	23.00	22.74	22.73	22.66
	12/11	23.00	22.50	22.49	22.66		25/24	23.00	22.63	22.62	22.79
	25/0	23.00	22.70	22.63	22.62		50/0	23.00	22.83	22.76	22.75

**P-sensor on**

LTE B5/BW=1.4M		Average Conducted Power(dBm)				LTE B5/BW=3M		Average Conducted Power(dBm)			
Modulation	RB Size/Offset	Max. Tune-up (dBm)	Channel/Frequency(MHz)			Modulation	RB Size/Offset	Max. Tune-up (dBm)	Channel/Frequency(MHz)		
			20407/824.	20525/836.5	20642/848.2				20415/825.5	20525/836.5	20634/847.4
QPSK	1/0	23.00	22.56	22.61	22.60	QPSK	1/0	23.00	22.63	22.68	22.67
	1/12	23.00	22.43	22.48	22.42		1/24	23.00	22.50	22.55	22.49
	1/24	23.00	22.34	22.38	22.36		1/49	23.00	22.41	22.45	22.43
	12/0	22.00	21.65	21.70	21.69		25/0	22.00	21.72	21.77	21.76
	12/6	22.00	21.48	21.53	21.47		25/12	22.00	21.55	21.60	21.54
	12/11	22.00	21.41	21.45	21.43		25/24	22.00	21.48	21.52	21.50
	25/0	22.00	21.60	21.65	21.64		50/0	22.00	21.67	21.72	21.71
16QAM	1/0	22.00	21.63	21.68	21.67	16QAM	1/0	22.00	21.70	21.75	21.74
	1/12	22.00	21.51	21.56	21.50		1/24	22.00	21.58	21.63	21.57
	1/24	22.00	21.44	21.48	21.46		1/49	22.00	21.51	21.55	21.53
	12/0	21.00	20.55	20.57	20.53		25/0	21.00	20.62	20.64	20.60
	12/6	21.00	20.40	20.40	20.32		25/12	21.00	20.47	20.47	20.39
	12/11	21.00	20.29	20.28	20.46		25/24	21.00	20.36	20.35	20.53
	25/0	21.00	20.52	20.47	20.48		50/0	21.00	20.59	20.54	20.55
LTE B5/BW=5M		Average Conducted Power(dBm)				LTE B5/BW=10M		Average Conducted Power(dBm)			
Modulation	RB Size/Offset	Max. Tune-up (dBm)	Channel/Frequency(MHz)			Modulation	RB Size/Offset	Max. Tune-up (dBm)	Channel/Frequency(MHz)		
			20415/825.5	20525/836.5	20634/847.4				20450/829	20525/836.5	20600/844
QPSK	1/0	23.00	22.68	22.73	22.72	QPSK	1/0	23.00	22.81	22.86	22.85
	1/12	23.00	22.55	22.60	22.54		1/24	23.00	22.68	22.73	22.67
	1/24	23.00	22.46	22.50	22.48		1/49	23.00	22.59	22.63	22.61
	12/0	22.00	21.77	21.82	21.81		25/0	22.00	21.90	21.95	21.94
	12/6	22.00	21.60	21.65	21.59		25/12	22.00	21.73	21.78	21.72
	12/11	22.00	21.53	21.57	21.55		25/24	22.00	21.66	21.70	21.68
	25/0	22.00	21.72	21.77	21.76		50/0	22.00	21.85	21.90	21.89
16QAM	1/0	22.00	21.75	21.80	21.79	16QAM	1/0	22.00	21.88	21.93	21.92
	1/12	22.00	21.63	21.68	21.62		1/24	22.00	21.76	21.81	21.75
	1/24	22.00	21.56	21.60	21.58		1/49	22.00	21.69	21.73	21.71
	12/0	21.00	20.67	20.69	20.65		25/0	21.00	20.80	20.82	20.78
	12/6	21.00	20.52	20.52	20.44		25/12	21.00	20.65	20.65	20.57
	12/11	21.00	20.41	20.40	20.58		25/24	21.00	20.54	20.53	20.71
	25/0	21.00	20.64	20.59	20.60		50/0	21.00	20.77	20.72	20.73

**LTE Band 7**
**P-sensor off**

LTE B7/BW=5M		Average Conducted Power(dBm)				LTE B7/BW=10M		Average Conducted Power(dBm)			
Modulation	RB Size/Offset	Max. Tune-up (dBm)	Channel/Frequency(MHz)			Modulation	RB Size/Offset	Max. Tune-up (dBm)	Channel/Frequency(MHz)		
			20775/2502.5	21100/2535	21425/2567.5				20800/2505	21100/2535	21400/2565
QPSK	1/0	24.00	23.62	23.66	23.63	QPSK	1/0	24.00	23.69	23.73	23.70
	1/12	24.00	23.51	23.57	23.50		1/24	24.00	23.58	23.64	23.57
	1/24	24.00	23.46	23.47	23.44		1/49	24.00	23.53	23.54	23.51
	12/0	23.00	22.71	22.75	22.72		25/0	23.00	22.78	22.82	22.79
	12/6	23.00	22.56	22.62	22.55		25/12	23.00	22.63	22.69	22.62
	12/11	23.00	22.53	22.54	22.51		25/24	23.00	22.60	22.61	22.58
	25/0	23.00	22.66	22.70	22.67		50/0	23.00	22.73	22.77	22.74
16QAM	1/0	23.00	22.69	22.73	22.70	16QAM	1/0	23.00	22.76	22.80	22.77
	1/12	23.00	22.59	22.65	22.58		1/24	23.00	22.66	22.72	22.65
	1/24	23.00	22.56	22.57	22.54		1/49	23.00	22.63	22.64	22.61
	12/0	22.00	21.61	21.62	21.56		25/0	22.00	21.68	21.69	21.63
	12/6	22.00	21.48	21.49	21.40		25/12	22.00	21.55	21.56	21.47
	12/11	22.00	21.41	21.37	21.54		25/24	22.00	21.48	21.44	21.61
	25/0	22.00	21.58	21.52	21.51		50/0	22.00	21.65	21.59	21.58
LTE B7/BW=15M		Average Conducted Power(dBm)				LTE B7/BW=20M		Average Conducted Power(dBm)			
Modulation	RB Size/Offset	Max. Tune-up (dBm)	Channel/Frequency(MHz)			Modulation	RB Size/Offset	Max. Tune-up (dBm)	Channel/Frequency(MHz)		
			20825/2507.5	21100/2535	21375/2562.5				20850/2510	21100/2535	21350/2560
QPSK	1/0	24.00	23.74	23.78	23.75	QPSK	1/0	24.00	23.87	23.91	23.88
	1/37	24.00	23.63	23.69	23.62		1/49	24.00	23.76	23.82	23.75
	1/74	24.00	23.58	23.59	23.56		1/99	24.00	23.71	23.72	23.69
	36/0	23.00	22.83	22.87	22.84		50/0	23.00	22.96	22.94	22.97
	36/18	23.00	22.68	22.74	22.67		50/24	23.00	22.81	22.87	22.80
	36/35	23.00	22.65	22.66	22.63		50/49	23.00	22.78	22.79	22.76
	75/0	23.00	22.78	22.82	22.79		100/0	23.00	22.91	22.95	22.92
16QAM	1/0	23.00	22.81	22.85	22.82	16QAM	1/0	23.00	22.94	22.98	22.95
	1/37	23.00	22.71	22.77	22.70		1/49	23.00	22.84	22.90	22.83
	1/74	23.00	22.68	22.69	22.66		1/99	23.00	22.81	22.82	22.79
	36/0	22.00	21.73	21.74	21.68		50/0	22.00	21.86	21.87	21.81
	36/18	22.00	21.60	21.61	21.52		50/24	22.00	21.73	21.74	21.65
	36/35	22.00	21.53	21.49	21.66		50/49	22.00	21.66	21.62	21.79
	75/0	22.00	21.70	21.64	21.63		100/0	22.00	21.83	21.77	21.76

**P-sensor on**

LTE B7/BW=5M		Average Conducted Power(dBm)				LTE B7/BW=10M		Average Conducted Power(dBm)			
Modulation	RB Size/Offset	Max. Tune-up (dBm)	Channel/Frequency(MHz)			Modulation	RB Size/Offset	Max. Tune-up (dBm)	Channel/Frequency(MHz)		
			20775/2502.5	21100/2535	21425/2567.5				20800/2505	21100/2535	21400/2565
QPSK	1/0	23.00	22.57	22.62	22.60	QPSK	1/0	23.00	22.64	22.69	22.67
	1/12	23.00	22.48	22.50	22.51		1/24	23.00	22.55	22.57	22.58
	1/24	23.00	22.40	22.44	22.46		1/49	23.00	22.47	22.51	22.53
	12/0	22.00	21.66	21.71	21.69		25/0	22.00	21.73	21.78	21.76
	12/6	22.00	21.53	21.55	21.56		25/12	22.00	21.60	21.62	21.63
	12/11	22.00	21.47	21.51	21.53		25/24	22.00	21.54	21.58	21.60
	25/0	22.00	21.61	21.66	21.64		50/0	22.00	21.68	21.73	21.71
16QAM	1/0	22.00	21.64	21.69	21.67	16QAM	1/0	22.00	21.71	21.76	21.74
	1/12	22.00	21.56	21.58	21.59		1/24	22.00	21.63	21.65	21.66
	1/24	22.00	21.50	21.54	21.56		1/49	22.00	21.57	21.61	21.63
	12/0	21.00	20.56	20.58	20.53		25/0	21.00	20.63	20.65	20.60
	12/6	21.00	20.45	20.42	20.41		25/12	21.00	20.52	20.49	20.48
	12/11	21.00	20.35	20.34	20.56		25/24	21.00	20.42	20.41	20.63
	25/0	21.00	20.53	20.48	20.48		50/0	21.00	20.60	20.55	20.55
LTE B7/BW=15M		Average Conducted Power(dBm)				LTE B7/BW=20M		Average Conducted Power(dBm)			
Modulation	RB Size/Offset	Max. Tune-up (dBm)	Channel/Frequency(MHz)			Modulation	RB Size/Offset	Max. Tune-up (dBm)	Channel/Frequency(MHz)		
			20825/2507.5	21100/2535	21375/2562.5				20850/2510	21100/2535	21350/2560
QPSK	1/0	23.00	22.69	22.74	22.72	QPSK	1/0	23.00	22.82	22.87	22.85
	1/37	23.00	22.60	22.62	22.63		1/49	23.00	22.73	22.75	22.76
	1/74	23.00	22.52	22.56	22.58		1/99	23.00	22.65	22.69	22.71
	36/0	22.00	21.78	21.83	21.81		50/0	22.00	21.91	21.96	21.94
	36/18	22.00	21.65	21.67	21.68		50/24	22.00	21.78	21.80	21.81
	36/35	22.00	21.59	21.63	21.65		50/49	22.00	21.72	21.76	21.78
	75/0	22.00	21.73	21.78	21.76		100/0	22.00	21.86	21.91	21.89
16QAM	1/0	22.00	21.76	21.81	21.79	16QAM	1/0	22.00	21.89	21.94	21.92
	1/37	22.00	21.68	21.70	21.71		1/49	22.00	21.81	21.83	21.84
	1/74	22.00	21.62	21.66	21.68		1/99	22.00	21.75	21.79	21.81
	36/0	21.00	20.68	20.70	20.65		50/0	21.00	20.81	20.83	20.78
	36/18	21.00	20.57	20.54	20.53		50/24	21.00	20.70	20.67	20.66
	36/35	21.00	20.47	20.46	20.68		50/49	21.00	20.60	20.59	20.81
	75/0	21.00	20.65	20.60	20.60		100/0	21.00	20.78	20.73	20.73

**LTE Band 12**
**P-sensor off**

LTE B12/BW=1.4M		Average Conducted Power(dBm)				LTE B12/BW=3M		Average Conducted Power(dBm)			
Modulation	RB Size/Offset	Max. Tune-up (dBm)	Channel/Frequency(MHz)			Modulation	RB Size/Offset	Max. Tune-up (dBm)	Channel/Frequency(MHz)		
			23017/699.7	23095/707.5	23173/715.3				23025/700.5	23095/707.5	23165/714.5
QPSK	1/0	25.00	24.56	24.60	24.57	QPSK	1/0	25.00	24.67	24.71	24.68
	1/12	25.00	24.46	24.49	24.42		1/12	25.00	24.57	24.60	24.53
	1/24	25.00	24.37	24.41	24.36		1/49	25.00	24.48	24.52	24.47
	12/0	24.00	23.65	23.69	23.66		25/0	24.00	23.76	23.80	23.77
	12/6	24.00	23.51	23.54	23.47		25/12	24.00	23.62	23.65	23.58
	12/11	24.00	23.44	23.48	23.43		25/24	24.00	23.55	23.59	23.54
	25/0	24.00	23.60	23.64	23.61		50/0	24.00	23.71	23.75	23.72
16QAM	1/0	24.00	23.63	23.67	23.64	16QAM	1/0	24.00	23.74	23.78	23.75
	1/12	24.00	23.54	23.57	23.50		1/24	24.00	23.65	23.68	23.61
	1/24	24.00	23.47	23.51	23.46		1/49	24.00	23.58	23.62	23.57
	12/0	23.00	22.71	22.75	22.72		25/0	23.00	22.82	22.86	22.83
	12/6	23.00	22.54	22.57	22.50		25/12	23.00	22.65	22.68	22.61
	12/11	23.00	22.47	22.51	22.46		25/24	23.00	22.58	22.62	22.57
	25/0	23.00	22.63	22.67	22.64		50/0	23.00	22.74	22.78	22.75
LTE B12/BW=5M		Average Conducted Power(dBm)				LTE B12/BW=10M		Average Conducted Power(dBm)			
Modulation	RB Size/Offset	Max. Tune-up (dBm)	Channel/Frequency(MHz)			Modulation	RB Size/Offset	Max. Tune-up (dBm)	Channel/Frequency(MHz)		
			23035/701.5	23095/707.5	23155/713.5				23060/704	23095/707.5	23130/711
QPSK	1/0	25.00	24.74	24.78	24.75	QPSK	1/0	25.00	24.82	24.86	24.83
	1/37	25.00	24.64	24.67	24.60		1/49	25.00	24.72	24.75	24.68
	1/74	25.00	24.55	24.59	24.54		1/99	25.00	24.63	24.67	24.62
	36/0	24.00	23.83	23.87	23.84		50/0	24.00	23.91	23.95	23.92
	36/18	24.00	23.69	23.72	23.65		50/24	24.00	23.77	23.80	23.73
	36/35	24.00	23.62	23.66	23.61		50/49	24.00	23.70	23.74	23.69
	75/0	24.00	23.78	23.82	23.79		100/0	24.00	23.86	23.90	23.87
16QAM	1/0	24.00	23.81	23.85	23.82	16QAM	1/0	24.00	23.89	23.93	23.90
	1/37	24.00	23.72	23.75	23.68		1/49	24.00	23.80	23.83	23.76
	1/74	24.00	23.65	23.69	23.64		1/99	24.00	23.73	23.77	23.72
	36/0	23.00	22.89	22.93	22.90		50/0	23.00	22.97	23.01	22.98
	36/18	23.00	22.72	22.75	22.68		50/24	23.00	22.80	22.83	22.76
	36/35	23.00	22.65	22.69	22.64		50/49	23.00	22.73	22.77	22.72
	75/0	23.00	22.81	22.85	22.82		100/0	23.00	22.89	22.93	22.90



**P-sensor on**

LTE B12/BW=1.4M		Average Conducted Power(dBm)				LTE B12/BW=3M		Average Conducted Power(dBm)			
Modulation	RB Size/Offset	Max. Tune-up (dBm)	Channel/Frequency(MHz)			Modulation	RB Size/Offset	Max. Tune-up (dBm)	Channel/Frequency(MHz)		
			23017/699.7	23095/707.5	23173/715.3				23025/700.5	23095/707.5	23165/714.5
QPSK	1/0	23.00	22.59	22.63	22.61	QPSK	1/0	23.00	22.70	22.74	22.72
	1/12	23.00	22.44	22.51	22.54		1/24	23.00	22.55	22.62	22.65
	1/24	23.00	22.36	22.47	22.45		1/49	23.00	22.47	22.58	22.56
	12/0	22.00	21.68	21.72	21.70		25/0	22.00	21.79	21.83	21.81
	12/6	22.00	21.49	21.56	21.59		25/12	22.00	21.60	21.67	21.70
	12/11	22.00	21.43	21.54	21.52		25/24	22.00	21.54	21.65	21.63
	25/0	22.00	21.63	21.67	21.65		50/0	22.00	21.74	21.78	21.76
16QAM	1/0	22.00	21.66	21.70	21.68	16QAM	1/0	22.00	21.77	21.81	21.79
	1/12	22.00	21.52	21.59	21.62		1/24	22.00	21.63	21.70	21.73
	1/24	22.00	21.46	21.57	21.55		1/49	22.00	21.57	21.68	21.66
	12/0	21.00	20.74	20.78	20.76		25/0	21.00	20.85	20.89	20.87
	12/6	21.00	20.52	20.59	20.62		25/12	21.00	20.63	20.70	20.73
	12/11	21.00	20.46	20.57	20.55		25/24	21.00	20.57	20.68	20.66
	25/0	21.00	20.66	20.70	20.68		50/0	21.00	20.77	20.81	20.79
LTE B12/BW=5M		Average Conducted Power(dBm)				LTE B12/BW=10M		Average Conducted Power(dBm)			
Modulation	RB Size/Offset	Max. Tune-up (dBm)	Channel/Frequency(MHz)			Modulation	RB Size/Offset	Max. Tune-up (dBm)	Channel/Frequency(MHz)		
			23035/701.5	23095/707.5	23155/713.5				23060/704	23095/707.5	23130/711
QPSK	1/0	23.00	22.77	22.81	22.79	QPSK	1/0	23.00	22.85	22.89	22.87
	1/37	23.00	22.62	22.69	22.72		1/49	23.00	22.70	22.77	22.80
	1/74	23.00	22.54	22.65	22.63		1/99	23.00	22.62	22.73	22.71
	36/0	22.00	21.86	21.90	21.88		50/0	22.00	21.94	21.98	21.96
	36/18	22.00	21.67	21.74	21.77		50/24	22.00	21.75	21.82	21.85
	36/35	22.00	21.61	21.72	21.70		50/49	22.00	21.69	21.80	21.78
	75/0	22.00	21.81	21.85	21.83		100/0	22.00	21.89	21.93	21.91
16QAM	1/0	22.00	21.84	21.88	21.86	16QAM	1/0	22.00	21.92	21.96	21.94
	1/37	22.00	21.70	21.77	21.80		1/49	22.00	21.78	21.85	21.88
	1/74	22.00	21.64	21.75	21.73		1/99	22.00	21.72	21.83	21.81
	36/0	21.00	20.92	20.96	20.94		50/0	21.00	21.00	21.04	21.02
	36/18	21.00	20.70	20.77	20.80		50/24	21.00	20.78	20.85	20.88
	36/35	21.00	20.64	20.75	20.73		50/49	21.00	20.72	20.83	20.81
	75/0	21.00	20.84	20.88	20.86		100/0	21.00	20.92	20.96	20.94

**LTE Band 13**
**P-sensor off**

LTE B13/BW=5M		Average Conducted Power(dBm)				LTE B13/BW=10M		Average Conducted Power(dBm)	
Modulation	RB Size/Offset	Max. Tune-up (dBm)	Channel/Frequency(MHz)			Modulation	RB Size/Offset	Max. Tune-up (dBm)	Channel/Frequency(MHz)
			23205/779.5	23230/782	23155/784.5				23230/782
QPSK	1/0	25.00	24.76	24.84	24.81	QPSK	1/0	25.00	24.92
	1/12	25.00	24.60	24.68	24.65		1/12	25.00	24.76
	1/24	25.00	24.56	24.64	24.61		1/49	25.00	24.72
	12/0	24.00	23.77	23.85	23.82		25/0	24.00	23.93
	12/6	24.00	23.59	23.67	23.64		25/12	24.00	23.75
	12/11	24.00	23.52	23.60	23.57		25/24	24.00	23.68
	25/0	24.00	23.71	23.79	23.76		50/0	24.00	23.87
16QAM	1/0	24.00	23.69	23.77	23.74	16QAM	1/0	24.00	23.85
	1/12	24.00	23.50	23.58	23.55		1/24	24.00	23.66
	1/24	24.00	23.44	23.52	23.49		1/49	24.00	23.60
	12/0	23.00	22.76	22.84	22.81		25/0	23.00	22.92
	12/6	23.00	22.60	22.68	22.65		25/12	23.00	22.76
	12/11	23.00	22.56	22.64	22.61		25/24	23.00	22.72
	25/0	23.00	21.77	21.85	21.82		50/0	23.00	21.93

**P-sensor on**

LTE B13/BW=5M		Average Conducted Power(dBm)				LTE B13/BW=10M		Average Conducted Power(dBm)	
Modulation	RB Size/Offset	Max. Tune-up (dBm)	Channel/Frequency(MHz)			Modulation	RB Size/Offset	Max. Tune-up (dBm)	Channel/Frequency(MHz)
			23205/779.5	23230/782	23155/784.5				23230/782
QPSK	1/0	23.00	22.75	22.83	22.80	QPSK	1/0	23.00	22.91
	1/12	23.00	22.66	22.74	22.71		1/12	23.00	22.82
	1/24	23.00	22.58	22.66	22.63		1/49	23.00	22.74
	12/0	22.00	21.76	21.84	21.81		25/0	22.00	21.92
	12/6	22.00	21.65	21.73	21.70		25/12	22.00	21.81
	12/11	22.00	21.54	21.62	21.59		25/24	22.00	21.70
	25/0	22.00	21.70	21.78	21.75		50/0	22.00	21.86
16QAM	1/0	22.00	21.68	21.76	21.73	16QAM	1/0	22.00	21.84
	1/12	22.00	21.56	21.64	21.61		1/24	22.00	21.72
	1/24	22.00	21.46	21.54	21.51		1/49	22.00	21.62
	12/0	21.00	20.75	20.83	20.80		25/0	21.00	20.91
	12/6	21.00	20.66	20.74	20.71		25/12	21.00	20.82
	12/11	21.00	20.58	20.66	20.63		25/24	21.00	20.74
	25/0	21.00	19.76	19.84	19.81		50/0	21.00	19.92

**LTE Band 14**
**P-sensor off**

LTE B14/BW=5M		Average Conducted Power(dBm)				LTE B14/BW=10M		Average Conducted Power(dBm)	
Modulation	RB Size/Offset	Max. Tune-up (dBm)	Channel/Frequency(MHz)			Modulation	RB Size/Offset	Max. Tune-up (dBm)	Channel/Frequency(MHz)
			23305/790.5	23330/793	23355/795.5				23330/793
QPSK	1/0	25.00	24.67	24.75	24.72	QPSK	1/0	25.00	24.83
	1/12	25.00	24.56	24.64	24.61		1/12	25.00	24.72
	1/24	25.00	24.50	24.58	24.55		1/49	25.00	24.66
	12/0	24.00	23.68	23.76	23.73		25/0	24.00	23.84
	12/6	24.00	23.55	23.63	23.60		25/12	24.00	23.71
	12/11	24.00	23.46	23.54	23.51		25/24	24.00	23.62
	25/0	24.00	23.62	23.70	23.67		50/0	24.00	23.78
16QAM	1/0	24.00	23.60	23.68	23.65	16QAM	1/0	24.00	23.76
	1/12	24.00	23.46	23.54	23.51		1/24	24.00	23.62
	1/24	24.00	23.38	23.46	23.43		1/49	24.00	23.54
	12/0	23.00	22.67	22.75	22.72		25/0	23.00	22.83
	12/6	23.00	22.56	22.64	22.61		25/12	23.00	22.72
	12/11	23.00	22.50	22.58	22.55		25/24	23.00	22.66
	25/0	23.00	21.68	21.76	21.73		50/0	23.00	21.84

**P-sensor on**

LTE B14/BW=5M		Average Conducted Power(dBm)				LTE B14/BW=10M		Average Conducted Power(dBm)	
Modulation	RB Size/Offset	Max. Tune-up (dBm)	Channel/Frequency(MHz)			Modulation	RB Size/Offset	Max. Tune-up (dBm)	Channel/Frequency(MHz)
			23305/790.5	23330/793	23355/795.5				23330/793
QPSK	1/0	23.00	22.70	22.78	22.75	QPSK	1/0	23.00	22.86
	1/12	23.00	22.59	22.67	22.64		1/12	23.00	22.75
	1/24	23.00	22.53	22.61	22.58		1/49	23.00	22.69
	12/0	22.00	21.71	21.79	21.76		25/0	22.00	21.87
	12/6	22.00	21.58	21.66	21.63		25/12	22.00	21.74
	12/11	22.00	21.49	21.57	21.54		25/24	22.00	21.65
	25/0	22.00	21.65	21.73	21.70		50/0	22.00	21.81
16QAM	1/0	22.00	21.63	21.71	21.68	16QAM	1/0	22.00	21.79
	1/12	22.00	21.49	21.57	21.54		1/24	22.00	21.65
	1/24	22.00	21.41	21.49	21.46		1/49	22.00	21.57
	12/0	21.00	20.70	20.78	20.75		25/0	21.00	20.86
	12/6	21.00	20.59	20.67	20.64		25/12	21.00	20.75
	12/11	21.00	20.53	20.61	20.58		25/24	21.00	20.69
	25/0	21.00	19.71	19.79	19.76		50/0	21.00	19.87

**LTE Band 17**
**P-sensor off**

LTE B17/BW=5M		Average Conducted Power(dBm)				LTE B17/BW=10M		Average Conducted Power(dBm)			
Modulation	RB Size/Offset	Max. Tune-up (dBm)	Channel/Frequency(MHz)			Modulation	RB Size/Offset	Max. Tune-up (dBm)	Channel/Frequency(MHz)		
			23780/706.5	23790/710	23800/713.5				23780/709.0	23790/710	23800/711.0
QPSK	1/0	25.00	24.76	24.80	22.73	QPSK	1/0	25.00	24.88	24.92	22.85
	1/12	25.00	24.66	24.69	22.62		1/12	25.00	24.78	24.81	22.74
	1/24	25.00	24.61	22.61	22.55		1/49	25.00	24.73	22.73	22.67
	12/0	24.00	23.85	23.89	21.82		25/0	24.00	23.97	23.91	21.94
	12/6	24.00	23.71	23.74	21.67		25/12	24.00	23.83	23.86	21.79
	12/11	24.00	23.68	21.68	21.62		25/24	24.00	23.80	21.80	21.74
	25/0	24.00	23.80	23.84	21.77		50/0	24.00	23.92	23.96	21.89
16QAM	1/0	24.00	23.83	23.87	21.80	16QAM	1/0	24.00	23.95	23.99	21.92
	1/12	24.00	23.74	23.77	21.70		1/24	24.00	23.86	23.89	21.82
	1/24	24.00	23.71	21.71	21.65		1/49	24.00	23.83	21.83	21.77
	12/0	23.00	22.91	22.95	20.88		25/0	23.00	23.03	23.07	21.00
	12/6	23.00	22.74	22.77	20.70		25/12	23.00	22.86	22.89	20.82
	12/11	23.00	22.71	20.71	20.65		25/24	23.00	22.83	20.83	20.77
	25/0	23.00	22.83	22.87	20.80		50/0	23.00	22.95	22.99	20.92

**P-sensor on**

LTE B17/BW=5M		Average Conducted Power(dBm)				LTE B17/BW=10M		Average Conducted Power(dBm)			
Modulation	RB Size/Offset	Max. Tune-up (dBm)	Channel/Frequency(MHz)			Modulation	RB Size/Offset	Max. Tune-up (dBm)	Channel/Frequency(MHz)		
			23780/706.5	23790/710	23800/713.5				23780/709.0	23790/710	23800/711.0
QPSK	1/0	23.00	22.74	22.75	22.73	QPSK	1/0	23.00	22.86	22.87	22.85
	1/12	23.00	22.64	22.69	22.62		1/12	23.00	22.76	22.81	22.74
	1/24	23.00	22.52	22.61	22.55		1/49	23.00	22.64	22.73	22.67
	12/0	22.00	21.83	21.84	21.82		25/0	22.00	21.95	21.96	21.94
	12/6	22.00	21.69	21.74	21.67		25/12	22.00	21.81	21.86	21.79
	12/11	22.00	21.59	21.68	21.62		25/24	22.00	21.71	21.80	21.74
	25/0	22.00	21.78	21.79	21.77		50/0	22.00	21.90	21.91	21.89
16QAM	1/0	22.00	21.81	21.82	21.80	16QAM	1/0	22.00	21.93	21.94	21.92
	1/12	22.00	21.72	21.77	21.70		1/24	22.00	21.84	21.89	21.82
	1/24	22.00	21.62	21.71	21.65		1/49	22.00	21.74	21.83	21.77
	12/0	21.00	20.89	20.90	20.88		25/0	21.00	21.01	21.02	21.00
	12/6	21.00	20.72	20.77	20.70		25/12	21.00	20.84	20.89	20.82
	12/11	21.00	20.62	20.71	20.65		25/24	21.00	20.74	20.83	20.77
	25/0	21.00	20.81	20.82	20.80		50/0	21.00	20.93	20.94	20.92

**LTE Band 25**
**P-sensor off**

LTE B25/BW=1.4M		Average Conducted Power(dBm)				LTE B25/BW=3M		Average Conducted Power(dBm)			
Modulation	RB Size/Offset	Max. Tune-up (dBm)	Channel/Frequency(MHz)			Modulation	RB Size/Offset	Max. Tune-up (dBm)	Channel/Frequency(MHz)		
			26047/1850.7	26365/1882.5	26683/1914.3				26055/1851.5	26365/1882.5	26675/1913.5
QPSK	1/0	24.00	23.45	23.52	23.48	QPSK	1/0	24.00	23.49	23.56	23.52
	1/12	24.00	23.34	23.37	23.36		1/12	24.00	23.38	23.41	23.40
	1/24	24.00	23.25	23.29	23.31		1/49	24.00	23.29	23.33	23.35
	12/0	23.00	22.54	22.61	22.57		25/0	23.00	22.58	22.65	22.61
	12/6	23.00	22.39	22.42	22.41		25/12	23.00	22.43	22.46	22.45
	12/11	23.00	22.32	22.36	22.38		25/24	23.00	22.36	22.40	22.42
	25/0	23.00	22.49	22.56	22.52		50/0	23.00	22.53	22.60	22.56
16QAM	1/0	23.00	22.52	22.59	22.55	16QAM	1/0	23.00	22.56	22.63	22.59
	1/12	23.00	22.42	22.45	22.44		1/24	23.00	22.46	22.49	22.48
	1/24	23.00	22.35	22.39	22.41		1/49	23.00	22.39	22.43	22.45
	12/0	22.00	21.44	21.48	21.41		25/0	22.00	21.48	21.52	21.45
	12/6	22.00	21.31	21.29	21.26		25/12	22.00	21.35	21.33	21.30
	12/11	22.00	21.20	21.19	21.41		25/24	22.00	21.24	21.23	21.45
	25/0	22.00	21.41	21.38	21.36		50/0	22.00	21.45	21.42	21.40
LTE B25/BW=5M		Average Conducted Power(dBm)				LTE B25/BW=10M		Average Conducted Power(dBm)			
Modulation	RB Size/Offset	Max. Tune-up (dBm)	Channel/Frequency(MHz)			Modulation	RB Size/Offset	Max. Tune-up (dBm)	Channel/Frequency(MHz)		
			26065/1852.5	26365/1882.5	26665/1912.5				26090/1855	26365/1882.5	26640/1910
QPSK	1/0	24.00	23.57	23.64	23.60	QPSK	1/0	24.00	23.64	23.71	23.67
	1/37	24.00	23.46	23.49	23.48		1/49	24.00	23.53	23.56	23.55
	1/74	24.00	23.37	23.41	23.43		1/99	24.00	23.44	23.48	23.50
	36/0	23.00	22.66	22.73	22.69		50/0	23.00	22.73	22.80	22.76
	36/18	23.00	22.51	22.54	22.53		50/24	23.00	22.58	22.61	22.60
	36/35	23.00	22.44	22.48	22.50		50/49	23.00	22.51	22.55	22.57
	75/0	23.00	22.61	22.68	22.64		100/0	23.00	22.68	22.75	22.71
16QAM	1/0	23.00	22.64	22.71	22.67	16QAM	1/0	23.00	22.71	22.78	22.74
	1/37	23.00	22.54	22.57	22.56		1/49	23.00	22.61	22.64	22.63
	1/74	23.00	22.47	22.51	22.53		1/99	23.00	22.54	22.58	22.60
	36/0	22.00	21.56	21.60	21.53		50/0	22.00	21.63	21.67	21.60
	36/18	22.00	21.43	21.41	21.38		50/24	22.00	21.50	21.48	21.45
	36/35	22.00	21.32	21.31	21.53		50/49	22.00	21.39	21.38	21.60
	75/0	22.00	21.53	21.50	21.48		100/0	22.00	21.60	21.57	21.55

LTE B25/BW=15M		Average Conducted Power(dBm)				LTE B25/BW=20M		Average Conducted Power(dBm)			
Modulation	RB Size/Offset	Max. Tune-up (dBm)	Channel/Frequency(MHz)			Modulation	RB Size/Offset	Max. Tune-up (dBm)	Channel/Frequency(MHz)		
			26115/1857.5	26365/1882.5	26615/1907.5				26140/1860	26365/1882.5	26590/1905
QPSK	1/0	24.00	23.69	23.76	23.72	QPSK	1/0	24.00	23.82	23.89	23.85
	1/37	24.00	23.58	23.61	23.60		1/49	24.00	23.71	23.74	23.73
	1/74	24.00	23.49	23.53	23.55		1/99	24.00	23.62	23.66	23.68
	36/0	23.00	22.78	22.85	22.81		50/0	23.00	22.91	22.98	22.94
	36/18	23.00	22.63	22.66	22.65		50/24	23.00	22.76	22.79	22.78
	36/35	23.00	22.56	22.60	22.62		50/49	23.00	22.69	22.73	22.75
	75/0	23.00	22.73	22.80	22.76		100/0	23.00	22.86	22.93	22.89
16QAM	1/0	23.00	22.76	22.83	22.79	16QAM	1/0	23.00	22.89	22.96	22.92
	1/37	23.00	22.66	22.69	22.68		1/49	23.00	22.79	22.82	22.81
	1/74	23.00	22.59	22.63	22.65		1/99	23.00	22.72	22.76	22.78
	36/0	22.00	21.68	21.72	21.65		50/0	22.00	21.81	21.85	21.78
	36/18	22.00	21.55	21.53	21.50		50/24	22.00	21.68	21.66	21.63
	36/35	22.00	21.44	21.43	21.65		50/49	22.00	21.57	21.56	21.78
	75/0	22.00	21.65	21.62	21.60		100/0	22.00	21.78	21.75	21.73

**P-sensor on**

LTE B25/BW=1.4M		Average Conducted Power(dBm)				LTE B25/BW=3M		Average Conducted Power(dBm)			
Modulation	RB Size/Offset	Max. Tune-up (dBm)	Channel/Frequency(MHz)			Modulation	RB Size/Offset	Max. Tune-up (dBm)	Channel/Frequency(MHz)		
			26047/1850.7	26365/1882.5	26683/1914.3				26055/1851.5	26365/1882.5	26675/1913.5
QPSK	1/0	23.00	22.47	22.49	22.45	QPSK	1/0	23.00	22.51	22.53	22.49
	1/12	23.00	22.38	22.35	22.34		1/12	23.00	22.42	22.39	22.38
	1/24	23.00	22.31	22.28	22.27		1/49	23.00	22.35	22.32	22.31
	12/0	22.00	21.56	21.58	21.54		25/0	22.00	21.60	21.62	21.58
	12/6	22.00	21.43	21.40	21.39		25/12	22.00	21.47	21.44	21.43
	12/11	22.00	21.38	21.35	21.34		25/24	22.00	21.42	21.39	21.38
	25/0	22.00	21.51	21.53	21.49		50/0	22.00	21.55	21.57	21.53
16QAM	1/0	22.00	21.54	21.56	21.52	16QAM	1/0	22.00	21.58	21.60	21.56
	1/12	22.00	21.46	21.43	21.42		1/24	22.00	21.50	21.47	21.46
	1/24	22.00	21.41	21.38	21.37		1/49	22.00	21.45	21.42	21.41
	12/0	21.00	20.46	20.45	20.38		25/0	21.00	20.50	20.49	20.42
	12/6	21.00	20.35	20.27	20.24		25/12	21.00	20.39	20.31	20.28
	12/11	21.00	20.26	20.18	20.37		25/24	21.00	20.30	20.22	20.41
	25/0	21.00	20.43	20.35	20.33		50/0	21.00	20.47	20.39	20.37

LTE B25/BW=5M		Average Conducted Power(dBm)				LTE B25/BW=10M		Average Conducted Power(dBm)			
Modulation	RB Size/Offset	Max. Tune-up (dBm)	Channel/Frequency(MHz)			Modulation	RB Size/Offset	Max. Tune-up (dBm)	Channel/Frequency(MHz)		
			26065/1852.5	26365/1882.5	26665/1912.5				26090/1855	26365/1882.5	26640/1910
QPSK	1/0	23.00	22.59	22.61	22.57	QPSK	1/0	23.00	22.66	22.68	22.64
	1/12	23.00	22.50	22.47	22.46		1/12	23.00	22.57	22.54	22.53
	1/24	23.00	22.43	22.40	22.39		1/49	23.00	22.50	22.47	22.46
	12/0	22.00	21.68	21.70	21.66		25/0	22.00	21.75	21.77	21.73
	12/6	22.00	21.55	21.52	21.51		25/12	22.00	21.62	21.59	21.58
	12/11	22.00	21.50	21.47	21.46		25/24	22.00	21.57	21.54	21.53
	25/0	22.00	21.63	21.65	21.61		50/0	22.00	21.70	21.72	21.68
16QAM	1/0	22.00	21.66	21.68	21.64	16QAM	1/0	22.00	21.73	21.75	21.71
	1/12	22.00	21.58	21.55	21.54		1/24	22.00	21.65	21.62	21.61
	1/24	22.00	21.53	21.50	21.49		1/49	22.00	21.60	21.57	21.56
	12/0	21.00	20.58	20.57	20.50		25/0	21.00	20.65	20.64	20.57
	12/6	21.00	20.47	20.39	20.36		25/12	21.00	20.54	20.46	20.43
	12/11	21.00	20.38	20.30	20.49		25/24	21.00	20.45	20.37	20.56
	25/0	21.00	20.55	20.47	20.45		50/0	21.00	20.62	20.54	20.52
LTE B25/BW=15M		Average Conducted Power(dBm)				LTE B25/BW=20M		Average Conducted Power(dBm)			
Modulation	RB Size/Offset	Max. Tune-up (dBm)	Channel/Frequency(MHz)			Modulation	RB Size/Offset	Max. Tune-up (dBm)	Channel/Frequency(MHz)		
			26115/1857.5	26365/1882.5	26615/1907.5				26140/1860	26365/1882.5	26590/1905
QPSK	1/0	23.00	22.71	22.73	22.69	QPSK	1/0	23.00	22.84	22.86	22.82
	1/37	23.00	22.62	22.59	22.58		1/49	23.00	22.75	22.72	22.71
	1/74	23.00	22.55	22.52	22.51		1/99	23.00	22.68	22.65	22.64
	36/0	22.00	21.80	21.82	21.78		50/0	22.00	21.93	21.95	21.91
	36/18	22.00	21.67	21.64	21.63		50/24	22.00	21.80	21.77	21.76
	36/35	22.00	21.62	21.59	21.58		50/49	22.00	21.75	21.72	21.71
	75/0	22.00	21.75	21.77	21.73		100/0	22.00	21.88	21.90	21.86
16QAM	1/0	22.00	21.78	21.80	21.76	16QAM	1/0	22.00	21.91	21.93	21.89
	1/37	22.00	21.70	21.67	21.66		1/49	22.00	21.83	21.80	21.79
	1/74	22.00	21.65	21.62	21.61		1/99	22.00	21.78	21.75	21.74
	36/0	21.00	20.70	20.69	20.62		50/0	21.00	20.83	20.82	20.75
	36/18	21.00	20.59	20.51	20.48		50/24	21.00	20.72	20.64	20.61
	36/35	21.00	20.50	20.42	20.61		50/49	21.00	20.63	20.55	20.74
	75/0	21.00	20.67	20.59	20.57		100/0	21.00	20.80	20.72	20.70

**LTE Band 26**
**P-sensor off**

LTE B26/BW=5M		Average Conducted Power(dBm)				LTE B26/BW=10M		Average Conducted Power(dBm)			
Modulation	RB Size/Offset	Max. Tune-up (dBm)	Channel/Frequency(MHz)			Modulation	RB Size/Offset	Max. Tune-up (dBm)	Channel/Frequency(MHz)		
			26715/816.5	26865/831.0	26990/846.5				26740/819.0	26865/831.0	26990/844.0
QPSK	1/0	25.00	24.67	24.71	24.68	QPSK	1/0	25.00	24.72	24.76	24.73
	1/12	25.00	24.59	24.64	24.59		1/24	25.00	24.64	24.69	24.64
	1/24	25.00	24.55	24.56	24.50		1/49	25.00	24.60	24.61	24.55
	12/0	24.00	23.76	23.80	23.77		25/0	24.00	23.81	23.85	23.82
	12/6	24.00	23.64	23.69	23.64		25/12	24.00	23.69	23.74	23.69
	12/11	24.00	23.62	23.63	23.57		25/24	24.00	23.67	23.68	23.62
	25/0	24.00	23.71	23.75	23.72		50/0	24.00	23.76	23.80	23.77
16QAM	1/0	24.00	23.74	23.78	23.75	16QAM	1/0	24.00	23.79	23.83	23.80
	1/12	24.00	23.67	23.72	23.67		1/24	24.00	23.72	23.77	23.72
	1/24	24.00	23.65	23.66	23.60		1/49	24.00	23.70	23.71	23.65
	12/0	23.00	22.66	22.67	22.61		25/0	23.00	22.71	22.72	22.66
	12/6	23.00	22.56	22.56	22.49		25/12	23.00	22.61	22.61	22.54
	12/11	23.00	22.50	22.46	22.60		25/24	23.00	22.55	22.51	22.65
	25/0	23.00	22.63	22.57	22.56		50/0	23.00	22.68	22.62	22.61
LTE B26/BW=15M		Average Conducted Power(dBm)									
Modulation	RB Size/Offset	Max. Tune-up (dBm)	Channel/Frequency(MHz)								
			26765/816.5	26865/831.0	26965/841.5						
QPSK	1/0	25.00	24.85	24.89	24.86						
	1/37	25.00	24.77	24.82	24.77						
	1/74	25.00	24.73	24.74	24.68						
	36/0	24.00	23.94	23.98	23.95						
	36/18	24.00	23.82	23.87	23.82						
	36/35	24.00	23.80	23.81	23.75						
	75/0	24.00	23.89	23.93	23.90						
16QAM	1/0	24.00	23.92	23.96	23.93						
	1/37	24.00	23.85	23.90	23.85						
	1/74	24.00	23.83	23.84	23.78						
	36/0	23.00	22.84	22.85	22.79						
	36/18	23.00	22.74	22.74	22.67						
	36/35	23.00	22.68	22.64	22.78						
	75/0	23.00	22.81	22.75	22.74						



**P-sensor on**

LTE B26/BW=5M		Average Conducted Power(dBm)				LTE B26/BW=10M		Average Conducted Power(dBm)			
Modulation	RB Size/Offset	Max. Tune-up (dBm)	Channel/Frequency(MHz)			Modulation	RB Size/Offset	Max. Tune-up (dBm)	Channel/Frequency(MHz)		
			26715/816.5	26865/831.0	26990/846.5				26740/819.0	26865/831.0	26990/844.0
QPSK	1/0	23.00	22.65	22.69	22.67	QPSK	1/0	23.00	22.70	22.74	22.72
	1/12	23.00	22.56	22.63	22.58		1/24	23.00	22.61	22.68	22.63
	1/24	23.00	22.49	22.55	22.50		1/49	23.00	22.54	22.60	22.55
	12/0	22.00	21.74	21.78	21.76		25/0	22.00	21.79	21.83	21.81
	12/6	22.00	21.61	21.68	21.63		25/12	22.00	21.66	21.73	21.68
	12/11	22.00	21.56	21.62	21.57		25/24	22.00	21.61	21.67	21.62
	25/0	22.00	21.69	21.73	21.71		50/0	22.00	21.74	21.78	21.76
16QAM	1/0	22.00	21.72	21.76	21.74	16QAM	1/0	22.00	21.77	21.81	21.79
	1/12	22.00	21.64	21.71	21.66		1/24	22.00	21.69	21.76	21.71
	1/24	22.00	21.59	21.65	21.60		1/49	22.00	21.64	21.70	21.65
	12/0	21.00	20.64	20.65	20.60		25/0	21.00	20.69	20.70	20.65
	12/6	21.00	20.53	20.55	20.48		25/12	21.00	20.58	20.60	20.53
	12/11	21.00	20.44	20.45	20.60		25/24	21.00	20.49	20.50	20.65
	25/0	21.00	20.61	20.55	20.55		50/0	21.00	20.66	20.60	20.60
LTE B26/BW=15M		Average Conducted Power(dBm)									
Modulation	RB Size/Offset	Max. Tune-up (dBm)	Channel/Frequency(MHz)								
			26765/816.5	26865/831.0	26965/841.5						
QPSK	1/0	23.00	22.83	22.87	22.85						
	1/37	23.00	22.74	22.81	22.76						
	1/74	23.00	22.67	22.73	22.68						
	36/0	22.00	21.92	21.96	21.94						
	36/18	22.00	21.79	21.86	21.81						
	36/35	22.00	21.74	21.80	21.75						
	75/0	22.00	21.87	21.91	21.89						
16QAM	1/0	22.00	21.90	21.94	21.92						
	1/37	22.00	21.82	21.89	21.84						
	1/74	22.00	21.77	21.83	21.78						
	36/0	21.00	20.82	20.83	20.78						
	36/18	21.00	20.71	20.73	20.66						
	36/35	21.00	20.62	20.63	20.78						
	75/0	21.00	20.79	20.73	20.73						

**LTE Band 30**
**P-sensor off**

LTE B30/BW=5M		Average Conducted Power(dBm)				LTE B30/BW=10M		Average Conducted Power(dBm)	
Modulation	RB Size/Offset	Max. Tune-up (dBm)	Channel/Frequency(MHz)			Modulation	RB Size/Offset	Max. Tune-up (dBm)	Channel/Frequency(MHz)
			27685/2307.5	27710/2310	27734/2312.4				27710/2310
QPSK	1/0	17.50	17.31	17.28	17.32	QPSK	1/0	17.50	17.39
	1/12	17.50	17.19	17.16	17.20		1/12	17.50	17.27
	1/24	17.50	17.11	17.08	17.12		1/49	17.50	17.19
	12/0	16.50	16.32	16.29	16.33		25/0	16.50	16.40
	12/6	16.50	16.24	16.21	16.25		25/12	16.50	16.32
	12/11	16.50	16.18	16.15	16.19		25/24	16.50	16.26
	25/0	16.50	16.35	16.32	16.36		50/0	16.50	16.43
16QAM	1/0	16.50	16.38	16.35	16.39	16QAM	1/0	16.50	16.46
	1/12	16.50	16.27	16.24	16.28		1/24	16.50	16.35
	1/24	16.50	16.21	16.18	16.22		1/49	16.50	16.29
	12/0	15.50	15.46	15.43	15.47		25/0	15.50	15.43
	12/6	15.50	15.27	15.24	15.28		25/12	15.50	15.35
	12/11	15.50	15.21	15.18	15.22		25/24	15.50	15.29
	25/0	15.50	15.38	15.35	15.39		50/0	15.50	15.46

**P-sensor on**

LTE B30/BW=5M		Average Conducted Power(dBm)				LTE B30/BW=10M		Average Conducted Power(dBm)	
Modulation	RB Size/Offset	Max. Tune-up (dBm)	Channel/Frequency(MHz)			Modulation	RB Size/Offset	Max. Tune-up (dBm)	Channel/Frequency(MHz)
			27685/2307.5	27710/2310	27734/2312.4				27710/2310
QPSK	1/0	16.50	16.30	16.27	16.31	QPSK	1/0	16.50	16.38
	1/12	16.50	16.18	16.15	16.19		1/12	16.50	16.26
	1/24	16.50	16.13	16.10	16.14		1/49	16.50	16.21
	12/0	15.50	15.31	15.28	15.32		25/0	15.50	15.39
	12/6	15.50	15.23	15.20	15.24		25/12	15.50	15.31
	12/11	15.50	15.20	15.17	15.21		25/24	15.50	15.28
	25/0	15.50	15.34	15.31	15.35		50/0	15.50	15.42
16QAM	1/0	15.50	15.37	15.34	15.38	16QAM	1/0	15.50	15.45
	1/12	15.50	15.26	15.23	15.27		1/24	15.50	15.34
	1/24	15.50	15.23	15.20	15.24		1/49	15.50	15.31
	12/0	14.50	14.45	14.42	14.46		25/0	14.50	14.46
	12/6	14.50	14.26	14.23	14.27		25/12	14.50	14.34
	12/11	14.50	14.23	14.20	14.24		25/24	14.50	14.31
	25/0	14.50	14.37	14.34	14.38		50/0	14.50	14.45

**LTE Band 38**
**P-sensor off**

LTE B38/BW=5M		Average Conducted Power(dBm)				LTE B38/BW=10M		Average Conducted Power(dBm)			
Modulation	RB Size/Offset	Max. Tune-up	Channel/Frequency(MHz)			Modulation	RB Size/Offset	Max. Tune-up	Channel/Frequency(MHz)		
			37775/2572.5	38000/2595	38225/2617.5				37800/2575	38000/2595	38200/2615
QPSK	1/0	24.00	23.58	23.61	23.56	QPSK	1/0	24.00	23.65	23.68	23.63
	1/12	24.00	23.49	23.51	23.47		1/24	24.00	23.56	23.58	23.54
	1/24	24.00	23.43	23.40	23.34		1/49	24.00	23.50	23.47	23.41
	12/0	23.00	22.67	22.70	22.65		25/0	23.00	22.74	22.77	22.72
	12/6	23.00	22.54	22.56	22.52		25/12	23.00	22.61	22.63	22.59
	12/11	23.00	22.50	22.47	22.41		25/24	23.00	22.57	22.54	22.48
	25/0	23.00	22.62	22.65	22.60		50/0	23.00	22.69	22.72	22.67
16QAM	1/0	23.00	22.65	22.68	22.63	16QAM	1/0	23.00	22.72	22.75	22.70
	1/12	23.00	22.57	22.59	22.55		1/24	23.00	22.64	22.66	22.62
	1/24	23.00	22.53	22.50	22.44		1/49	23.00	22.60	22.57	22.51
	12/0	22.00	21.57	21.57	21.49		25/0	22.00	21.64	21.64	21.56
	12/6	22.00	21.46	21.43	21.37		25/12	22.00	21.53	21.50	21.44
	12/11	22.00	21.38	21.30	21.44		25/25	22.00	21.45	21.37	21.51
	25/0	22.00	21.54	21.47	21.44		50/0	22.00	21.61	21.54	21.51
LTE B38/BW=15M		Average Conducted Power(dBm)				LTE B38/BW=20M		Average Conducted Power(dBm)			
Modulation	RB Size/Offset	Max. Tune-up	Channel/Frequency(MHz)			Modulation	RB Size/Offset	Max. Tune-up	Channel/Frequency(MHz)		
			37825/2577.5	38000/2595.0	38175/2612.5				37850/2580	38000/2595	38150/2610
QPSK	1/0	24.00	23.70	23.73	23.68	QPSK	1/0	24.00	23.83	23.86	23.81
	1/37	24.00	23.61	23.63	23.59		1/49	24.00	23.74	23.76	23.72
	1/74	24.00	23.55	23.52	23.46		1/99	24.00	23.68	23.65	23.59
	36/0	23.00	22.79	22.82	22.77		50/0	23.00	22.92	22.95	22.90
	36/18	23.00	22.66	22.68	22.64		50/24	23.00	22.79	22.81	22.77
	36/35	23.00	22.62	22.59	22.53		50/49	23.00	22.75	22.72	22.66
	75/0	23.00	22.74	22.77	22.72		100/0	23.00	22.87	22.90	22.85
16QAM	1/0	23.00	22.77	22.80	22.75	16QAM	1/0	23.00	22.90	22.93	22.88
	1/37	23.00	22.69	22.71	22.67		1/49	23.00	22.82	22.84	22.80
	1/74	23.00	22.65	22.62	22.56		1/99	23.00	22.78	22.75	22.69
	36/0	22.00	21.69	21.69	21.61		50/0	22.00	21.82	21.82	21.74
	36/18	22.00	21.58	21.55	21.49		50/24	22.00	21.71	21.68	21.62
	36/35	22.00	21.50	21.42	21.56		50/49	22.00	21.63	21.55	21.69
	75/0	22.00	21.66	21.59	21.56		100/0	22.00	21.79	21.72	21.69

**P-sensor on**

LTE B38/BW=5M		Average Conducted Power(dBm)				LTE B38/BW=10M		Average Conducted Power(dBm)			
Modulation	RB Size/Offset	Max. Tune-up	Channel/Frequency(MHz)			Modulation	RB Size/Offset	Max. Tune-up	Channel/Frequency(MHz)		
			37775/2572.5	38000/2595	38225/2617.5				37800/2575	38000/2595	38200/2615
QPSK	1/0	23.00	22.61	22.62	22.58	QPSK	1/0	23.00	22.68	22.69	22.65
	1/12	23.00	22.50	22.53	22.46		1/24	23.00	22.57	22.60	22.53
	1/24	23.00	22.39	22.44	22.38		1/49	23.00	22.46	22.51	22.45
	12/0	22.00	21.70	21.71	21.67		25/0	22.00	21.77	21.78	21.74
	12/6	22.00	21.55	21.58	21.51		25/12	22.00	21.62	21.65	21.58
	12/11	22.00	21.46	21.51	21.45		25/24	22.00	21.53	21.58	21.52
	25/0	22.00	21.65	21.66	21.62		50/0	22.00	21.72	21.73	21.69
16QAM	1/0	22.00	21.68	21.69	21.65	16QAM	1/0	22.00	21.75	21.76	21.72
	1/12	22.00	21.58	21.61	21.54		1/24	22.00	21.65	21.68	21.61
	1/24	22.00	21.49	21.54	21.48		1/49	22.00	21.56	21.61	21.55
	12/0	21.00	20.60	20.58	20.51		25/0	21.00	20.67	20.65	20.58
	12/6	21.00	20.47	20.45	20.36		25/12	21.00	20.54	20.52	20.43
	12/11	21.00	20.34	20.34	20.48		25/25	21.00	20.41	20.41	20.55
	25/0	21.00	20.57	20.48	20.46		50/0	21.00	20.64	20.55	20.53
LTE B38/BW=15M		Average Conducted Power(dBm)				LTE B38/BW=20M		Average Conducted Power(dBm)			
Modulation	RB Size/Offset	Max. Tune-up	Channel/Frequency(MHz)			Modulation	RB Size/Offset	Max. Tune-up	Channel/Frequency(MHz)		
			37825/2577.5	38000/2595.0	38175/2612.5				37850/2580	38000/2595	38150/2610
QPSK	1/0	23.00	22.73	22.74	22.70	QPSK	1/0	23.00	22.86	22.87	22.83
	1/37	23.00	22.62	22.65	22.58		1/49	23.00	22.75	22.78	22.71
	1/74	23.00	22.51	22.56	22.50		1/99	23.00	22.64	22.69	22.63
	36/0	22.00	21.82	21.83	21.79		50/0	22.00	21.95	21.96	21.92
	36/18	22.00	21.67	21.70	21.63		50/24	22.00	21.80	21.83	21.76
	36/35	22.00	21.58	21.63	21.57		50/49	22.00	21.71	21.76	21.70
	75/0	22.00	21.77	21.78	21.74		100/0	22.00	21.90	21.91	21.87
16QAM	1/0	22.00	21.80	21.81	21.77	16QAM	1/0	22.00	21.93	21.94	21.90
	1/37	22.00	21.70	21.73	21.66		1/49	22.00	21.83	21.86	21.79
	1/74	22.00	21.61	21.66	21.60		1/99	22.00	21.74	21.79	21.73
	36/0	21.00	20.72	20.70	20.63		50/0	21.00	20.85	20.83	20.76
	36/18	21.00	20.59	20.57	20.48		50/24	21.00	20.72	20.70	20.61
	36/35	21.00	20.46	20.46	20.60		50/49	21.00	20.59	20.59	20.73
	75/0	21.00	20.69	20.60	20.58		100/0	21.00	20.82	20.73	20.71

**LTE Band 41**

P-sensor off

LTE B41/BW=5M		Average Conducted Power(dBm)				LTE B41/BW=10M		Average Conducted Power(dBm)			
Modulation	RB Size/Offset	Max. Tune-up (dBm)	Channel/Frequency(MHz)			Modulation	RB Size/Offset	Max. Tune-up (dBm)	Channel/Frequency(MHz)		
			39675/2498.5	40620/2593	41565/2687.5				39700/2501	40620/2593	41540/2685
QPSK	1/0	24.00	23.51	23.52	23.50	QPSK	1/0	24.00	23.60	23.61	23.59
	1/12	24.00	23.43	23.45	23.38		1/24	24.00	23.52	23.54	23.47
	1/24	24.00	23.35	23.41	23.32		1/49	24.00	23.44	23.50	23.41
	12/0	23.00	22.60	22.61	22.59		25/0	23.00	22.69	22.70	22.68
	12/6	23.00	22.48	22.50	22.43		25/12	23.00	22.57	22.59	22.52
	12/11	23.00	22.42	22.48	22.39		25/24	23.00	22.51	22.57	22.48
	25/0	23.00	22.55	22.56	22.54		50/0	23.00	22.64	22.65	22.63
16QAM	1/0	23.00	22.58	22.59	22.57	16QAM	1/0	23.00	22.67	22.68	22.66
	1/12	23.00	22.51	22.53	22.46		1/24	23.00	22.60	22.62	22.55
	1/24	23.00	22.45	22.51	22.42		1/49	23.00	22.54	22.60	22.51
	12/0	22.00	21.66	21.67	21.65		25/0	22.00	21.75	21.76	21.74
	12/6	22.00	21.51	21.53	21.46		25/12	22.00	21.60	21.62	21.55
	12/11	22.00	21.45	21.51	21.42		25/25	22.00	21.54	21.60	21.51
	25/0	22.00	21.58	21.59	21.57		50/0	22.00	21.67	21.68	21.66
LTE B41/BW=15M		Average Conducted Power(dBm)				LTE B41/BW=20M		Average Conducted Power(dBm)			
Modulation	RB Size/Offset	Max. Tune-up (dBm)	Channel/Frequency(MHz)			Modulation	RB Size/Offset	Max. Tune-up (dBm)	Channel/Frequency(MHz)		
			39725/2503.5	40620/2593	41515/2682.5				39750/2506	40620/2593	41490/2680
QPSK	1/0	24.00	23.73	23.74	23.72	QPSK	1/0	24.00	23.81	23.82	23.80
	1/37	24.00	23.65	23.67	23.60		1/49	24.00	23.73	23.75	23.68
	1/74	24.00	23.57	23.63	23.54		1/99	24.00	23.65	23.71	23.62
	36/0	23.00	22.82	22.83	22.81		50/0	23.00	22.90	22.91	22.89
	36/18	23.00	22.70	22.72	22.65		50/24	23.00	22.78	22.80	22.73
	36/35	23.00	22.64	22.70	22.61		50/49	23.00	22.72	22.78	22.69
	75/0	23.00	22.77	22.78	22.76		100/0	23.00	22.85	22.86	22.84
16QAM	1/0	23.00	22.80	22.81	22.79	16QAM	1/0	23.00	22.88	22.89	22.87
	1/37	23.00	22.73	22.75	22.68		1/49	23.00	22.81	22.83	22.76
	1/74	23.00	22.67	22.73	22.64		1/99	23.00	22.75	22.81	22.72
	36/0	22.00	21.88	21.89	21.87		50/0	22.00	21.96	21.97	21.95
	36/18	22.00	21.73	21.75	21.68		50/24	22.00	21.81	21.83	21.76
	36/35	22.00	21.67	21.73	21.64		50/49	22.00	21.75	21.81	21.72
	75/0	22.00	21.80	21.81	21.79		100/0	22.00	21.88	21.89	21.87

**P-sensor off (HPUE)**

LTE B41/BW=5M		Average Conducted Power(dBm)				LTE B41/BW=10M		Average Conducted Power(dBm)			
Modulation	RB Size/Offset	Max. Tune-up (dBm)	Channel/Frequency(MHz)			Modulation	RB Size/Offset	Max. Tune-up (dBm)	Channel/Frequency(MHz)		
			39675/2498.5	40620/2593	41565/2687.5				39700/2501	40620/2593	41540/2685
QPSK	1/0	27.00	25.69	26.12	25.73	QPSK	1/0	27.00	25.74	26.17	25.78
	1/12	27.00	26.03	26.06	25.39		1/24	27.00	26.08	26.11	25.44
	1/24	27.00	26.08	25.83	24.98		1/49	27.00	26.13	25.88	25.03
	12/0	26.00	25.69	26.12	25.73		25/0	26.00	25.74	26.17	25.78
	12/6	26.00	26.03	26.06	25.39		25/12	26.00	26.08	26.11	25.44
	12/11	26.00	26.08	25.83	24.98		25/24	26.00	26.13	25.88	25.03
	25/0	26.00	24.75	25.18	24.79		50/0	26.00	24.80	25.23	24.84
16QAM	1/0	26.00	24.87	25.30	24.91	16QAM	1/0	26.00	24.92	25.35	24.96
	1/12	26.00	24.83	25.26	24.87		1/24	26.00	24.88	25.31	24.92
	1/24	26.00	25.15	24.90	24.05		1/49	26.00	25.20	24.95	24.10
	12/0	25.00	24.87	25.30	24.91		25/0	25.00	24.92	25.35	24.96
	12/6	25.00	24.83	25.26	24.87		25/12	25.00	24.88	25.31	24.92
	12/11	25.00	25.15	24.90	24.05		25/25	25.00	25.20	24.95	24.10
	25/0	25.00	23.84	25.30	24.91		50/0	25.00	23.89	25.35	24.96
LTE B41/BW=15M		Average Conducted Power(dBm)				LTE B41/BW=20M		Average Conducted Power(dBm)			
Modulation	RB Size/Offset	Max. Tune-up (dBm)	Channel/Frequency(MHz)			Modulation	RB Size/Offset	Max. Tune-up (dBm)	Channel/Frequency(MHz)		
			39725/2503.5	40620/2593	41515/2682.5				39750/2506	40620/2593	41490/2680
QPSK	1/0	27.00	25.79	26.22	25.83	QPSK	1/0	27.00	25.84	26.27	25.88
	1/37	27.00	26.13	26.16	25.49		1/49	27.00	26.18	26.21	25.54
	1/74	27.00	26.18	25.93	25.08		1/99	27.00	26.23	25.98	25.13
	36/0	26.00	25.79	26.22	25.83		50/0	26.00	24.95	25.38	24.99
	36/18	26.00	26.13	26.16	25.49		50/24	26.00	25.22	25.25	24.58
	36/35	26.00	26.18	25.93	25.08		50/49	26.00	25.41	25.16	24.31
	75/0	26.00	24.85	25.28	24.89		100/0	26.00	24.90	25.33	24.94
16QAM	1/0	26.00	24.97	25.40	25.01	16QAM	1/0	26.00	25.02	25.45	25.06
	1/37	26.00	24.93	25.36	24.97		1/49	26.00	24.98	25.41	25.02
	1/74	26.00	25.25	25.00	24.15		1/99	26.00	25.30	25.05	24.20
	36/0	25.00	24.97	25.40	25.01		50/0	25.00	23.85	24.28	23.89
	36/18	25.00	24.93	25.36	24.97		50/24	25.00	24.32	24.35	23.68
	36/35	25.00	25.25	25.00	24.15		50/49	25.00	24.26	24.01	23.16
	75/0	25.00	23.94	24.23	23.84		100/0	25.00	23.99	24.42	24.03

**P-sensor on**

LTE B41/BW=5M		Average Conducted Power(dBm)				LTE B41/BW=10M		Average Conducted Power(dBm)			
Modulation	RB Size/Offset	Max. Tune-up (dBm)	Channel/Frequency(MHz)			Modulation	RB Size/Offset	Max. Tune-up (dBm)	Channel/Frequency(MHz)		
			39675/2498.5	40620/2593	41565/2687.5				39700/2501	40620/2593	41540/2685
QPSK	1/0	23.00	22.64	22.65	22.61	QPSK	1/0	23.00	22.71	22.72	22.68
	1/12	23.00	22.53	22.57	22.51		1/24	23.00	22.60	22.64	22.58
	1/24	23.00	22.47	22.50	22.44		1/49	23.00	22.54	22.57	22.51
	12/0	22.00	21.73	21.74	21.70		25/0	22.00	21.80	21.81	21.77
	12/6	22.00	21.58	21.62	21.56		25/12	22.00	21.65	21.69	21.63
	12/11	22.00	21.54	21.57	21.51		25/24	22.00	21.61	21.64	21.58
	25/0	22.00	21.68	21.69	21.65		50/0	22.00	21.75	21.76	21.72
16QAM	1/0	22.00	21.71	21.72	21.68	16QAM	1/0	22.00	21.78	21.79	21.75
	1/12	22.00	21.61	21.65	21.59		1/24	22.00	21.68	21.72	21.66
	1/24	22.00	21.57	21.60	21.54		1/49	22.00	21.64	21.67	21.61
	12/0	21.00	20.63	20.61	20.54		25/0	21.00	20.70	20.68	20.61
	12/6	21.00	20.50	20.49	20.41		25/12	21.00	20.57	20.56	20.48
	12/11	21.00	20.42	20.40	20.54		25/24	21.00	20.49	20.47	20.61
	25/0	21.00	20.60	20.51	20.49		50/0	21.00	20.67	20.58	20.56
LTE B41/BW=15M		Average Conducted Power(dBm)				LTE B41/BW=20M		Average Conducted Power(dBm)			
Modulation	RB Size/Offset	Max. Tune-up (dBm)	Channel/Frequency(MHz)			Modulation	RB Size/Offset	Max. Tune-up (dBm)	Channel/Frequency(MHz)		
			39725/2503.5	40620/2593	41515/2682.5				39750/2506	40620/2593	41490/2680
QPSK	1/0	23.00	22.76	22.77	22.73	QPSK	1/0	23.00	22.89	22.90	22.86
	1/37	23.00	22.65	22.69	22.63		1/49	23.00	22.78	22.82	22.76
	1/74	23.00	22.59	22.62	22.56		1/99	23.00	22.72	22.75	22.69
	36/0	22.00	21.85	21.86	21.82		50/0	22.00	21.98	21.99	21.95
	36/18	22.00	21.70	21.74	21.68		50/24	22.00	21.83	21.87	21.81
	36/35	22.00	21.66	21.69	21.63		50/49	22.00	21.79	21.82	21.76
	75/0	22.00	21.80	21.81	21.77		100/0	22.00	21.93	21.94	21.90
16QAM	1/0	22.00	21.83	21.84	21.80	16QAM	1/0	22.00	21.96	21.97	21.93
	1/37	22.00	21.73	21.77	21.71		1/49	22.00	21.86	21.90	21.84
	1/74	22.00	21.69	21.72	21.66		1/99	22.00	21.82	21.85	21.79
	36/0	21.00	20.75	20.73	20.66		50/0	21.00	20.88	20.86	20.79
	36/18	21.00	20.62	20.61	20.53		50/24	21.00	20.75	20.74	20.66
	36/35	21.00	20.54	20.52	20.66		50/49	21.00	20.67	20.65	20.79
	75/0	21.00	20.72	20.63	20.61		100/0	21.00	20.85	20.76	20.74

**LTE Band 48**
**P-sensor off**

LTE B48/BW=5M		Average Conducted Power(dBm)				LTE B48/BW=10M		Average Conducted Power(dBm)			
Modulation	RB Size/Offset	Max. Tune-up	Channel/Frequency(MHz)			Modulation	RB Size/Offset	Max. Tune-up	Channel/Frequency(MHz)		
			55265/3552.5	56232/3649.2	56715/3697.5				55290/3555	56223/3648.3	56690/3695
QPSK	1/0	22.00	21.55	21.62	21.55	QPSK	1/0	22.00	21.64	21.71	21.64
	1/12	22.00	21.44	21.54	21.42		1/24	22.00	21.53	21.63	21.51
	1/24	22.00	21.35	21.46	21.28		1/49	22.00	21.44	21.55	21.37
	12/0	21.00	20.64	20.71	20.64		25/0	21.00	20.73	20.80	20.73
	12/6	21.00	20.49	20.59	20.47		25/12	21.00	20.58	20.68	20.56
	12/11	21.00	20.42	20.53	20.35		25/24	21.00	20.51	20.62	20.44
	25/0	21.00	20.59	20.66	20.59		50/0	21.00	20.68	20.75	20.68
16QAM	1/0	21.00	20.62	20.69	20.62	16QAM	1/0	21.00	20.71	20.78	20.71
	1/12	21.00	20.52	20.62	20.50		1/24	21.00	20.61	20.71	20.59
	1/24	21.00	20.45	20.56	20.38		1/49	21.00	20.54	20.65	20.47
	12/0	20.00	19.70	19.77	19.70		25/0	20.00	19.79	19.86	19.79
	12/6	20.00	19.52	19.62	19.50		25/12	20.00	19.61	19.71	19.59
	12/11	20.00	19.45	19.56	19.38		25/25	20.00	19.54	19.65	19.47
	25/0	20.00	19.62	19.69	19.62		50/0	20.00	19.71	19.78	19.71
LTE B48/BW=15M		Average Conducted Power(dBm)				LTE B48/BW=20M		Average Conducted Power(dBm)			
Modulation	RB Size/Offset	Max. Tune-up	Channel/Frequency(MHz)			Modulation	RB Size/Offset	Max. Tune-up	Channel/Frequency(MHz)		
			55315/3557.5	56215/3647.5	56665/3692.5				55340/3560	56207/3646.7	56640/3690
QPSK	1/0	22.00	21.77	21.84	21.77	QPSK	1/0	22.00	21.85	21.92	21.85
	1/37	22.00	21.66	21.76	21.64		1/49	22.00	21.74	21.84	21.72
	1/74	22.00	21.57	21.68	21.50		1/99	22.00	21.65	21.76	21.58
	36/0	21.00	20.86	20.93	20.86		50/0	21.00	20.94	20.91	20.94
	36/18	21.00	20.71	20.81	20.69		50/24	21.00	20.79	20.89	20.77
	36/35	21.00	20.64	20.75	20.57		50/49	21.00	20.72	20.83	20.65
	75/0	21.00	20.81	20.88	20.81		100/0	21.00	20.89	20.96	20.89
16QAM	1/0	21.00	20.84	20.91	20.84	16QAM	1/0	21.00	20.92	20.99	20.92
	1/37	21.00	20.74	20.84	20.72		1/49	21.00	20.82	20.92	20.80
	1/74	21.00	20.67	20.78	20.60		1/99	21.00	20.75	20.86	20.68
	36/0	20.00	19.92	19.99	19.92		50/0	20.00	19.90	19.87	19.86
	36/18	20.00	19.74	19.84	19.72		50/24	20.00	19.82	19.92	19.80
	36/35	20.00	19.67	19.78	19.60		50/49	20.00	19.75	19.86	19.68
	75/0	20.00	19.84	19.91	19.84		100/0	20.00	19.92	19.99	19.92



**P-sensor on**

LTE B48/BW=5M		Average Conducted Power(dBm)				LTE B48/BW=10M		Average Conducted Power(dBm)			
Modulation	RB Size/Offset	Max. Tune-up	Channel/Frequency(MHz)			Modulation	RB Size/Offset	Max. Tune-up	Channel/Frequency(MHz)		
			55265/3552.5	56232/3649.2	56715/3697.5				55290/3555	56223/3648.3	56690/3695
QPSK	1/0	21.00	20.56	20.60	20.58	QPSK	1/0	21.00	20.65	20.69	20.67
	1/12	21.00	20.47	20.52	20.48		1/24	21.00	20.56	20.61	20.57
	1/24	21.00	20.36	20.43	20.41		1/49	21.00	20.45	20.52	20.50
	12/0	20.00	19.65	19.69	19.67		25/0	20.00	19.74	19.78	19.76
	12/6	20.00	19.52	19.57	19.53		25/12	20.00	19.61	19.66	19.62
	12/11	20.00	19.43	19.50	19.48		25/24	20.00	19.52	19.59	19.57
	25/0	20.00	19.60	19.64	19.62		50/0	20.00	19.69	19.73	19.71
16QAM	1/0	20.00	19.63	19.67	19.65	16QAM	1/0	20.00	19.72	19.76	19.74
	1/12	20.00	19.55	19.60	19.56		1/24	20.00	19.64	19.69	19.65
	1/24	20.00	19.46	19.53	19.51		1/49	20.00	19.55	19.62	19.60
	12/0	19.00	18.71	18.75	18.73		25/0	19.00	18.80	18.84	18.82
	12/6	19.00	18.55	18.60	18.56		25/12	19.00	18.64	18.69	18.65
	12/11	19.00	18.46	18.53	18.51		25/25	19.00	18.55	18.62	18.60
	25/0	19.00	18.63	18.67	18.65		50/0	19.00	18.72	18.76	18.74
LTE B48/BW=15M		Average Conducted Power(dBm)				LTE B48/BW=20M		Average Conducted Power(dBm)			
Modulation	RB Size/Offset	Max. Tune-up	Channel/Frequency(MHz)			Modulation	RB Size/Offset	Max. Tune-up	Channel/Frequency(MHz)		
			55315/3557.5	56215/3647.5	56665/3692.5				55340/3560	56207/3646.7	56640/3690
QPSK	1/0	21.00	20.78	20.82	20.80	QPSK	1/0	21.00	20.86	20.90	20.88
	1/37	21.00	20.69	20.74	20.70		1/49	21.00	20.77	20.82	20.78
	1/74	21.00	20.58	20.65	20.63		1/99	21.00	20.66	20.73	20.71
	36/0	20.00	19.87	19.91	19.89		50/0	20.00	19.95	19.96	19.97
	36/18	20.00	19.74	19.79	19.75		50/24	20.00	19.82	19.87	19.83
	36/35	20.00	19.65	19.72	19.70		50/49	20.00	19.73	19.80	19.78
	75/0	20.00	19.82	19.86	19.84		100/0	20.00	19.90	19.94	19.92
16QAM	1/0	20.00	19.85	19.89	19.87	16QAM	1/0	20.00	19.93	19.97	19.95
	1/37	20.00	19.77	19.82	19.78		1/49	20.00	19.85	19.90	19.86
	1/74	20.00	19.68	19.75	19.73		1/99	20.00	19.76	19.83	19.81
	36/0	19.00	18.93	18.97	18.95		50/0	19.00	18.92	18.95	18.93
	36/18	19.00	18.77	18.82	18.78		50/24	19.00	18.85	18.90	18.86
	36/35	19.00	18.68	18.75	18.73		50/49	19.00	18.76	18.83	18.81
	75/0	19.00	18.85	18.89	18.87		100/0	19.00	18.93	18.97	18.95

**LTE Band 66**
**P-sensor off**

LTE B66/BW=1.4M		Average Conducted Power(dBm)				LTE B66/BW=3M		Average Conducted Power(dBm)			
Modulation	RB Size/Offset	Max. Tune-up (dBm)	Channel/Frequency(MHz)			Modulation	RB Size/Offset	Max. Tune-up (dBm)	Channel/Frequency(MHz)		
			131979/1710.7	132322/1745.0	132664/1779.2				131987/1711.5	132322/1745.0	132656/1778.4
QPSK	1/0	21.50	21.00	21.02	20.98	QPSK	1/0	21.50	21.05	21.07	21.03
	1/12	21.50	20.94	20.90	20.91		1/12	21.50	20.99	20.95	20.96
	1/24	21.50	20.89	20.83	20.84		1/49	21.50	20.94	20.88	20.89
	12/0	20.50	20.09	20.11	20.07		25/0	20.50	20.14	20.16	20.12
	12/6	20.50	19.99	19.95	19.96		25/12	20.50	20.04	20.00	20.01
	12/11	20.50	19.96	19.90	19.91		25/24	20.50	20.01	19.95	19.96
	25/0	20.50	20.04	20.06	20.02		50/0	20.50	20.09	20.11	20.07
16QAM	1/0	20.50	20.07	20.09	20.05	16QAM	1/0	20.50	20.12	20.14	20.10
	1/12	20.50	20.02	19.98	19.99		1/24	20.50	20.07	20.03	20.04
	1/24	20.50	19.99	19.93	19.94		1/49	20.50	20.04	19.98	19.99
	12/0	19.50	19.15	19.17	19.13		25/0	19.50	19.20	19.22	19.18
	12/6	19.50	19.02	18.98	18.99		25/12	19.50	19.07	19.03	19.04
	12/11	19.50	18.99	18.93	18.94		25/24	19.50	19.04	18.98	18.99
	25/0	19.50	19.07	19.09	19.05		50/0	19.50	19.12	19.14	19.10
LTE B66/BW=5M		Average Conducted Power(dBm)				LTE B66/BW=10M		Average Conducted Power(dBm)			
Modulation	RB Size/Offset	Max. Tune-up (dBm)	Channel/Frequency(MHz)			Modulation	RB Size/Offset	Max. Tune-up (dBm)	Channel/Frequency(MHz)		
			131997/1712.5	132322/1745	132647/1777.5				132022/1715	132322/1745	132621/1775
QPSK	1/0	21.50	21.13	21.15	21.11	QPSK	1/0	21.50	21.19	21.21	21.17
	1/37	21.50	21.07	21.03	21.04		1/49	21.50	21.13	21.09	21.10
	1/74	21.50	21.02	20.96	20.97		1/99	21.50	21.08	21.02	21.03
	36/0	20.50	20.22	20.24	20.20		50/0	20.50	20.28	20.30	20.26
	36/18	20.50	20.12	20.08	20.09		50/24	20.50	20.18	20.14	20.15
	36/35	20.50	20.09	20.03	20.04		50/49	20.50	20.15	20.09	20.10
	75/0	20.50	20.17	20.19	20.15		100/0	20.50	20.23	20.25	20.21
16QAM	1/0	20.50	20.20	20.22	20.18	16QAM	1/0	20.50	20.26	20.28	20.24
	1/37	20.50	20.15	20.11	20.12		1/49	20.50	20.21	20.17	20.18
	1/74	20.50	20.12	20.06	20.07		1/99	20.50	20.18	20.12	20.13
	36/0	19.50	19.28	19.30	19.26		50/0	19.50	19.34	19.36	19.32
	36/18	19.50	19.15	19.11	19.12		50/24	19.50	19.21	19.17	19.18
	36/35	19.50	19.12	19.06	19.07		50/49	19.50	19.18	19.12	19.13
	75/0	19.50	19.20	19.22	19.18		100/0	19.50	19.26	19.28	19.24

LTE B66/BW=15M		Average Conducted Power(dBm)				LTE B66/BW=20M		Average Conducted Power(dBm)			
Modulation	RB Size/Offset	Max. Tune-up (dBm)	Channel/Frequency(MHz)			Modulation	RB Size/Offset	Max. Tune-up (dBm)	Channel/Frequency(MHz)		
			132047/1717.5	132322/1745	132597/1772.5				132072/1720	132322/1745	132572/1770
QPSK	1/0	21.50	21.26	21.28	21.24	QPSK	1/0	21.50	21.34	21.36	21.32
	1/37	21.50	21.20	21.16	21.17		1/49	21.50	21.28	21.24	21.25
	1/74	21.50	21.15	21.09	21.10		1/99	21.50	21.23	21.17	21.18
	36/0	20.50	20.35	20.37	20.33		50/0	20.50	20.43	20.45	20.41
	36/18	20.50	20.25	20.21	20.22		50/24	20.50	20.33	20.29	20.30
	36/35	20.50	20.22	20.16	20.17		50/49	20.50	20.30	20.24	20.25
	75/0	20.50	20.30	20.32	20.28		100/0	20.50	20.38	20.40	20.36
16QAM	1/0	20.50	20.33	20.35	20.31	16QAM	1/0	20.50	20.41	20.43	20.39
	1/37	20.50	20.28	20.24	20.25		1/49	20.50	20.36	20.32	20.33
	1/74	20.50	20.25	20.19	20.20		1/99	20.50	20.33	20.27	20.28
	36/0	19.50	19.41	19.43	19.39		50/0	19.50	19.49	19.45	19.47
	36/18	19.50	19.28	19.24	19.25		50/24	19.50	19.36	19.32	19.33
	36/35	19.50	19.25	19.19	19.20		50/49	19.50	19.33	19.27	19.28
	75/0	19.50	19.33	19.35	19.31		100/0	19.50	19.41	19.43	19.39

**P-sensor on**

LTE B66/BW=1.4M		Average Conducted Power(dBm)				LTE B66/BW=3M		Average Conducted Power(dBm)			
Modulation	RB Size/Offset	Max. Tune-up (dBm)	Channel/Frequency(MHz)			Modulation	RB Size/Offset	Max. Tune-up (dBm)	Channel/Frequency(MHz)		
			131979/1710.7	132322/1745.0	132664/1779.2				131987/1711.5	132322/1745.0	132656/1778.4
QPSK	1/0	20.50	20.01	20.03	20.00	QPSK	1/0	20.50	20.06	20.08	20.05
	1/12	20.50	19.90	19.95	19.92		1/12	20.50	19.95	20.00	19.97
	1/24	20.50	19.84	19.88	19.84		1/49	20.50	19.89	19.93	19.89
	12/0	19.50	19.10	19.12	19.09		25/0	19.50	19.15	19.17	19.14
	12/6	19.50	18.95	19.00	18.97		25/12	19.50	19.00	19.05	19.02
	12/11	19.50	18.91	18.95	18.91		25/24	19.50	18.96	19.00	18.96
	25/0	19.50	19.05	19.07	19.04		50/0	19.50	19.10	19.12	19.09
16QAM	1/0	19.50	19.08	19.10	19.07	16QAM	1/0	19.50	19.13	19.15	19.12
	1/12	19.50	18.98	19.03	19.00		1/24	19.50	19.03	19.08	19.05
	1/24	19.50	18.94	18.98	18.94		1/49	19.50	18.99	19.03	18.99
	12/0	18.50	18.16	18.18	18.15		25/0	18.50	18.21	18.23	18.20
	12/6	18.50	17.98	18.03	18.00		25/12	18.50	18.03	18.08	18.05
	12/11	18.50	17.94	17.98	17.94		25/24	18.50	17.99	18.03	17.99
	25/0	18.50	18.08	18.10	18.07		50/0	18.50	18.13	18.15	18.12
LTE B66/BW=5M		Average Conducted Power(dBm)				LTE B66/BW=10M		Average Conducted Power(dBm)			
Modulation	RB Size/Offset	Max. Tune-up (dBm)	Channel/Frequency(MHz)			Modulation	RB Size/Offset	Max. Tune-up (dBm)	Channel/Frequency(MHz)		
			131997/1712.5	132322/1745	132647/1777.5				132022/1715	132322/1745	132621/1775
QPSK	1/0	20.50	20.14	20.16	20.13	QPSK	1/0	20.50	20.20	20.22	20.19
	1/37	20.50	20.03	20.08	20.05		1/49	20.50	20.09	20.14	20.11
	1/74	20.50	19.97	20.01	19.97		1/99	20.50	20.03	20.07	20.03
	36/0	19.50	19.23	19.25	19.22		50/0	19.50	19.29	19.31	19.28
	36/18	19.50	19.08	19.13	19.10		50/24	19.50	19.14	19.19	19.16
	36/35	19.50	19.04	19.08	19.04		50/49	19.50	19.10	19.14	19.10
	75/0	19.50	19.18	19.20	19.17		100/0	19.50	19.24	19.26	19.23
16QAM	1/0	19.50	19.21	19.23	19.20	16QAM	1/0	19.50	19.27	19.29	19.26
	1/37	19.50	19.11	19.16	19.13		1/49	19.50	19.17	19.22	19.19
	1/74	19.50	19.07	19.11	19.07		1/99	19.50	19.13	19.17	19.13
	36/0	18.50	18.29	18.31	18.28		50/0	18.50	18.35	18.37	18.34
	36/18	18.50	18.11	18.16	18.13		50/24	18.50	18.17	18.22	18.19
	36/35	18.50	18.07	18.11	18.07		50/49	18.50	18.13	18.17	18.13
	75/0	18.50	18.21	18.23	18.20		100/0	18.50	18.27	18.29	18.26

LTE B66/BW=15M		Average Conducted Power(dBm)				LTE B66/BW=20M		Average Conducted Power(dBm)			
Modulation	RB Size/Offset	Max. Tune-up (dBm)	Channel/Frequency(MHz)			Modulation	RB Size/Offset	Max. Tune-up (dBm)	Channel/Frequency(MHz)		
			132047/1717.5	132322/1745	132597/1772.5				132072/1720	132322/1745	132572/1770
QPSK	1/0	20.50	20.27	20.29	20.26	QPSK	1/0	20.50	20.35	20.37	20.34
	1/37	20.50	20.16	20.21	20.18		1/49	20.50	20.24	20.29	20.26
	1/74	20.50	20.10	20.14	20.10		1/99	20.50	20.18	20.22	20.18
	36/0	19.50	19.36	19.38	19.35		50/0	19.50	19.44	19.46	19.43
	36/18	19.50	19.21	19.26	19.23		50/24	19.50	19.29	19.34	19.31
	36/35	19.50	19.17	19.21	19.17		50/49	19.50	19.25	19.29	19.25
	75/0	19.50	19.31	19.33	19.30		100/0	19.50	19.39	19.41	19.38
16QAM	1/0	19.50	19.34	19.36	19.33	16QAM	1/0	19.50	19.42	19.44	19.41
	1/37	19.50	19.24	19.29	19.26		1/49	19.50	19.32	19.37	19.34
	1/74	19.50	19.20	19.24	19.20		1/99	19.50	19.28	19.32	19.28
	36/0	18.50	18.42	18.44	18.41		50/0	18.50	18.44	18.47	18.49
	36/18	18.50	18.24	18.29	18.26		50/24	18.50	18.32	18.37	18.34
	36/35	18.50	18.20	18.24	18.20		50/49	18.50	18.28	18.32	18.28
	75/0	18.50	18.34	18.36	18.33		100/0	18.50	18.42	18.44	18.41

**LTE Band 71**
**P-sensor off**

LTE B71/BW=5M		Average Conducted Power(dBm)				LTE B71/BW=10M		Average Conducted Power(dBm)			
Modulation	RB Size/Offset	Max. Tune-up	Channel/Frequency(MHz)			Modulation	RB Size/Offset	Max. Tune-up	Channel/Frequency(MHz)		
			133147/665.5	133297/680.5	133447/695.5				133172/668	133297/680.5	133422/693
QPSK	1/0	25.00	24.62	24.66	24.64	QPSK	1/0	25.00	24.68	24.72	24.70
	1/12	25.00	24.53	24.56	24.51		1/24	25.00	24.59	24.62	24.57
	1/24	25.00	24.45	24.48	24.44		1/49	25.00	24.51	24.54	24.50
	12/0	24.00	23.71	23.75	23.73		25/0	24.00	23.77	23.81	23.79
	12/6	24.00	23.58	23.61	23.56		25/12	24.00	23.64	23.67	23.62
	12/11	24.00	23.52	23.55	23.51		25/24	24.00	23.58	23.61	23.57
	25/0	24.00	23.66	23.70	23.68		50/0	24.00	23.72	23.76	23.74
16QAM	1/0	24.00	23.69	23.73	23.71	16QAM	1/0	24.00	23.75	23.79	23.77
	1/12	24.00	23.61	23.64	23.59		1/24	24.00	23.67	23.70	23.65
	1/24	24.00	23.55	23.58	23.54		1/49	24.00	23.61	23.64	23.60
	12/0	23.00	22.77	22.81	22.79		25/0	23.00	22.83	22.87	22.85
	12/6	23.00	22.61	22.64	22.59		25/12	23.00	22.67	22.70	22.65
	12/11	23.00	22.55	22.58	22.54		25/25	23.00	22.61	22.64	22.60
	25/0	23.00	22.69	22.73	22.71		50/0	23.00	22.75	22.79	22.77
LTE B71/BW=15M		Average Conducted Power(dBm)				LTE B71/BW=20M		Average Conducted Power(dBm)			
Modulation	RB Size/Offset	Max. Tune-up	Channel/Frequency(MHz)			Modulation	RB Size/Offset	Max. Tune-up	Channel/Frequency(MHz)		
			133197/670.5	133297/680.5	133397/690.5				133222/673	133297/680.5	133372/688
QPSK	1/0	25.00	24.75	24.79	24.77	QPSK	1/0	25.00	24.83	24.87	24.85
	1/37	25.00	24.66	24.69	24.64		1/49	25.00	24.74	24.77	24.72
	1/74	25.00	24.58	24.61	24.57		1/99	25.00	24.66	24.69	24.65
	36/0	24.00	23.84	23.88	23.86		50/0	24.00	23.92	23.96	23.94
	36/18	24.00	23.71	23.74	23.69		50/24	24.00	23.79	23.82	23.77
	36/35	24.00	23.65	23.68	23.64		50/49	24.00	23.73	23.76	23.72
	75/0	24.00	23.79	23.83	23.81		100/0	24.00	23.87	23.91	23.89
16QAM	1/0	24.00	23.82	23.86	23.84	16QAM	1/0	24.00	23.90	23.94	23.92
	1/37	24.00	23.74	23.77	23.72		1/49	24.00	23.82	23.85	23.80
	1/74	24.00	23.68	23.71	23.67		1/99	24.00	23.76	23.79	23.75
	36/0	23.00	22.90	22.94	22.92		50/0	23.00	22.98	22.96	22.94
	36/18	23.00	22.74	22.77	22.72		50/24	23.00	22.82	22.85	22.80
	36/35	23.00	22.68	22.71	22.67		50/49	23.00	22.76	22.79	22.75
	75/0	23.00	22.82	22.86	22.84		100/0	23.00	22.90	22.94	22.92

**P-sensor on**

LTE B71/BW=5M		Average Conducted Power(dBm)				LTE B71/BW=10M		Average Conducted Power(dBm)			
Modulation	RB Size/Offset	Max. Tune-up	Channel/Frequency(MHz)			Modulation	RB Size/Offset	Max. Tune-up	Channel/Frequency(MHz)		
			133147/665.5	133297/680.5	133447/695.5				133172/668	133297/680.5	133422/693
QPSK	1/0	23.00	22.64	22.67	22.65	QPSK	1/0	23.00	22.70	22.73	22.71
	1/12	23.00	22.53	22.51	22.49		1/24	23.00	22.59	22.57	22.55
	1/24	23.00	22.44	22.46	22.40		1/49	23.00	22.50	22.52	22.46
	12/0	22.00	21.73	21.76	21.74		25/0	22.00	21.79	21.82	21.80
	12/6	22.00	21.58	21.56	21.54		25/12	22.00	21.64	21.62	21.60
	12/11	22.00	21.51	21.53	21.47		25/24	22.00	21.57	21.59	21.53
	25/0	22.00	21.68	21.71	21.69		50/0	22.00	21.74	21.77	21.75
16QAM	1/0	22.00	21.71	21.74	21.72	16QAM	1/0	22.00	21.77	21.80	21.78
	1/12	22.00	21.61	21.59	21.57		1/24	22.00	21.67	21.65	21.63
	1/24	22.00	21.54	21.56	21.50		1/49	22.00	21.60	21.62	21.56
	12/0	21.00	20.79	20.82	20.80		25/0	21.00	20.85	20.88	20.86
	12/6	21.00	20.61	20.59	20.57		25/12	21.00	20.67	20.65	20.63
	12/11	21.00	20.54	20.56	20.50		25/25	21.00	20.60	20.62	20.56
	25/0	21.00	20.71	20.74	20.72		50/0	21.00	20.77	20.80	20.78
LTE B71/BW=15M		Average Conducted Power(dBm)				LTE B71/BW=20M		Average Conducted Power(dBm)			
Modulation	RB Size/Offset	Max. Tune-up	Channel/Frequency(MHz)			Modulation	RB Size/Offset	Max. Tune-up	Channel/Frequency(MHz)		
			133197/670.5	133297/680.5	133397/690.5				133222/673	133297/680.5	133372/688
QPSK	1/0	23.00	22.77	22.80	22.78	QPSK	1/0	23.00	22.85	22.88	22.86
	1/37	23.00	22.66	22.64	22.62		1/49	23.00	22.74	22.72	22.70
	1/74	23.00	22.57	22.59	22.53		1/99	23.00	22.65	22.67	22.61
	36/0	22.00	21.86	21.89	21.87		50/0	22.00	21.94	21.97	21.95
	36/18	22.00	21.71	21.69	21.67		50/24	22.00	21.79	21.77	21.75
	36/35	22.00	21.64	21.66	21.60		50/49	22.00	21.72	21.74	21.68
	75/0	22.00	21.81	21.84	21.82		100/0	22.00	21.89	21.92	21.90
16QAM	1/0	22.00	21.84	21.87	21.85	16QAM	1/0	22.00	21.92	21.95	21.93
	1/37	22.00	21.74	21.72	21.70		1/49	22.00	21.82	21.80	21.78
	1/74	22.00	21.67	21.69	21.63		1/99	22.00	21.75	21.77	21.71
	36/0	21.00	20.92	20.95	20.93		50/0	21.00	21.00	21.03	21.01
	36/18	21.00	20.74	20.72	20.70		50/24	21.00	20.82	20.80	20.78
	36/35	21.00	20.67	20.69	20.63		50/49	21.00	20.75	20.77	20.71
	75/0	21.00	20.84	20.87	20.85		100/0	21.00	20.92	20.95	20.93

### 9.3 Conducted power measurement results of Bluetooth

Band	Mode	Channel	Frequency (MHz)	Max Power (dBm)	AVG Power (dBm)
BR	DH5	0	2402	11.00	Not Require
		39	2441	11.00	
		78	2480	11.00	
EDR	3DH5	0	2402	9.00	
		39	2441	9.00	
		78	2480	9.00	
BLE	1M	0	2402	9.00	
		19	2440	9.00	
		39	2480	9.00	
	2M	0	2402	9.00	
		19	2440	9.00	
		39	2480	9.00	

Note:

1.WLAN antenna distance is > 20cm, so SAR testing are not require



### 9.4 Conducted power measurements of Wi-Fi 2.4GHz Band

Band	Mode	Channel	Frequency (MHz)	Data Rate	Max Tune-Up Power (dBm)	AVG Power (dBm)	
						Main	Aux
2.4G	802.11b	1-13	2412-2462	1	21.00	Not Required	
	802.11g	1-13	2412-2462	6	22.00		
	802.11n20	1-13	2412-2462	HT0	22.00		
	802.11n40	3-11	2422-2452	HT0	18.00		
	802.11ax20	1-13	2412-2462	HE0	22.00		
	802.11ax40	3-11	2422-2452	HE0	18.00		

Note:

- 1.WLAN antenna distance is > 20cm, so SAR testing are not require

### 9.5 Conducted power measurements of 5G UNII\_1

Band	Mode	Channel	Frequency (MHz)	Data Rate	Max Tune-Up Power (dBm)	AVG Power (dBm)	
						Main	Aux
UNII_1	802.11a	36-48	5180-5240	6	21.50	Not Required	
	802.11 n20	36-48	5180-5240	HT0	21.50		
	802.11 n40	38-46	5190-5230	HT0	18.50		
	802.11 ac80	42	5210	VHT0	18.00		
	802.11 ax20	36-48	5180-5240	HE0	20.50		
	802.11 ax40	38-46	5190-5230	HE0	19.00		
	802.11 ax80	42	5210	HE0	18.00		

Note:

- 1.WLAN antenna distance is > 20cm, so SAR testing are not require

### 9.6 CONDUCTED POWER MEASUREMENTS OF 5G UNII\_2A

Band	Mode	Channel	Frequency (MHz)	Data Rate	Max Tune-Up Power (dBm)	AVG Power (dBm)	
						Main	Aux
UNII_2a	802.11a	52-64	5260-5320	6	21.50	Not Required	
	802.11 n20	52-64	5260-5320	HT0	21.50		
	802.11 n40	54-62	5270-5310	HT0	18.50		
	802.11 ac80	58	5290	VHT0	18.00		
	802.11 ac160	50	5250	VHT0	18.00		
	802.11 ax20	52-64	5260-5320	HE0	21.50		
	802.11 ax40	54-62	5270-5310	HE0	18.50		
	802.11 ax80	58	5290	HE0	18.00		
	802.11 ax160	50	5250	HE0	18.00		

Note:

- 1.WLAN antenna distance is > 20cm, so SAR testing are not require

**9.7 CONDUCTED POWER MEASUREMENTS OF 5G UNII\_2C**

Band	Mode	Channel	Frequency (MHz)	Data Rate	Max Tune-Up Power (dBm)	AVG Power (dBm)	
						Main	Aux
UNII_2c	802.11a	100-140	5500-5700	6	21.50	Not Required	
	802.11 n20	100-140	5500-5700	HTO	21.50		
	802.11 n40	102-134	5510-5670	HTO	21.50		
	802.11 ac80	106-122	5530-5610	VHTO	19.00		
	802.11 ac160	114	5570	VHTO	17.00		
	802.11 ax20	100-128	5500-5640	HEO	21.50		
	802.11 ax40	102-126	5510-5630	HEO	21.50		
	802.11 ax80	106-122	5530-5610	HEO	19.00		
802.11 ax160	114	5570	HEO	17.00			

Note:

- 1.WLAN antenna distance is > 20cm, so SAR testing are not require

**9.8 CONDUCTED POWER MEASUREMENTS OF 5G UNII\_3**

Band	Mode	Channel	Frequency (MHz)	Data Rate	Max Tune-Up Power (dBm)	AVG Power (dBm)	
						Main	Aux
5.8 UNII_3	802.11a	149-165	5745-5825	6	21.50	Not Required	
	802.11 n20	149-165	5745-5825	HTO	21.50		
	802.11 n40	151-159	5755-5795	HTO	21.50		
	802.11 ac80	155	5775	VHTO	21.00		
	802.11 ax20	149-165	5745-5825	HEO	21.50		
	802.11 ax40	151-159	5755-5795	HEO	21.50		
	802.11 ax80	155	5775	HEO	21.00		

Note:

- 1.WLAN antenna distance is > 20cm, so SAR testing are not require .

### 9.9 CONDUCTED POWER MEASUREMENTS OF 6E UNII\_5

Band	Mode	Channel	Frequency (MHz)	Data Rate	Max Tune-Up Power (dBm)	AVG Power (dBm)	
						Main	Aux
6.2 UNII_5	802.11 ax20	1 - 93	5955 - 6415	HE0	7.00	Not Required	
	802.11 ax40	3 - 43	5965 - 6165	HE0	10.00		
	802.11 ax80	7 - 87	5985 - 6385	HE0	13.00		
	802.11 ax160	15 - 79	6025 - 6345	HE0	13.50		

Note:

1.WLAN antenna distance is > 20cm, so SAR testing are not require .

### 9.10 CONDUCTED POWER MEASUREMENTS OF 6E UNII\_6

Band	Mode	Channel	Frequency (MHz)	Data Rate	Max Tune-Up Power (dBm)	AVG Power (dBm)	
						Main	Aux
6.5 UNII_6	802.11 ax20	97 - 113	6435 - 6515	HE0	7.00	Not Required	
	802.11 ax40	99 - 107	6445 - 6485	HE0	10.00		
	802.11 ax80	103 - 119	6465 - 6545	HE0	13.00		
	802.11 ax80	111	6505	HE0	13.50		

Note:

1.WLAN antenna distance is > 20cm, so SAR testing are not require .

**9.11 CONDUCTED POWER MEASUREMENTS OF 6E UNII\_7**

Band	Mode	Channel	Frequency (MHz)	Data Rate	Max Tune-Up Power (dBm)	AVG Power (dBm)	
						Main	Aux
6.7 UNII_7	802.11 ax20	117 - 181	6535 - 6855	HE0	7.00	Not Required	
	802.11 ax40	115 - 179	6525 - 6845	HE0	10.00		
	802.11 ax80	135 - 167	6625 - 6785	HE0	13.00		
	802.11 ax80	143	6665	HE0	13.50		

Note:

1.WLAN antenna distance is > 20cm, so SAR testing are not require .

**9.12 CONDUCTED POWER MEASUREMENTS OF 6E UNII\_8**

Band	Mode	Channel	Frequency (MHz)	Data Rate	Max Tune-Up Power (dBm)	AVG Power (dBm)	
						Main	Aux
7 UNII_8	802.11 ax20	185 - 233	6875 - 7115	HE0	7.00	Not Required	
	802.11 ax40	187 - 227	6885 - 7085	HE0	10.00		
	802.11 ax80	183 - 215	6865 - 7025	HE0	13.00		
	802.11 ax160	207	6985	HE0	13.50		

Note:

1.WLAN antenna distance is > 20cm, so SAR testing are not require .

### 9.13 SAR TEST RESULTS

**General Notes:**

Per KDB447498 D01, all measurement SAR results are scaled to the maximum tune-up tolerance limit to demonstrate compliant.

Per KDB447498 D01, testing of other required channels within the operating mode of a frequency band is not required when the reported 1-g or 10-g SAR for the mid-band or highest output power channel is:  $\leq 0.8$  W/kg or 2.0 W/kg, for 1-g or 10-g respectively, when the transmission band is  $\leq 100$  MHz. When the maximum output power variation across the required test channels is  $> \frac{1}{2}$  dB, instead of the middle channel, the highest output power channel must be used.

Per KDB865664 D01, for each frequency band, repeated SAR measurement is required only when the measured SAR is  $\geq 0.8$  W/kg; if the deviation among the repeated measurement is  $\leq 20\%$ , and the measured SAR  $< 1.45$  W/kg, only one repeated measurement is required.

## 10. SAR TEST RESULTS

### 10.1. Body SAR test result

#### SAR test results of WWAN

##### WCDMA

P-Sensor	Band	Mode	channel	distance (mm)	Test Position	Max Tune-up (dBm)	AVG Power (dBm)	Area Scan	SAR 1g	Reported SAR 1g	Note
on	UMTS Band II	RMC12.2K	9400	0	Bottom	23.00	22.92	0.913	0.934	0.951	
		RMC12.2K	9262	0	Bottom	23.00	22.89	0.917	0.930	<b>0.954</b>	1
		RMC12.2K	9538	0	Bottom	23.00	22.90	0.896	0.913	0.934	1
off		RMC12.2K	9400	14	Bottom	24.50	24.39	0.393	0.408	0.418	
on	UMTS Band IV	RMC12.2K	1413	0	Bottom	23.00	22.89	0.868	0.892	0.915	
		RMC12.2K	1312	0	Bottom	23.00	22.86	0.848	0.860	0.888	1
		RMC12.2K	1513	0	Bottom	23.00	22.88	0.960	0.977	<b>1.004</b>	1
		RMC12.2K	1513	0	Bottom	23.00	22.88	0.875	0.913	0.939	2
off		RMC12.2K	1413	14	Bottom	24.50	24.42	0.408	0.425	0.433	
on	UMTS Band V	RMC12.2K	4182	0	Bottom	23.00	22.91	0.495	0.502	<b>0.513</b>	
		RMC12.2K	4132	0	Bottom	23.00	22.86	0.483	0.485	0.501	
		RMC12.2K	4233	0	Bottom	23.00	22.88	0.490	0.494	0.508	
off		RMC12.2K	4182	14	Bottom	24.50	24.40	0.198	0.212	0.217	

#### Note:

- Highest reported SAR is > 0.8 W/kg. Added second highest power channel for this test position
- Repeated measurements are required only when the measured SAR is  $\geq 0.80$  W/kg. If the measured SAR values are < 1.45 W/kg with  $\leq 20\%$  variation, only one repeated measurement is required to reaffirm that the results are not expected to have substantial variations, which may introduce significant compliance concerns. (Per KDB 865664 D01 SAR measurement 100 MHz to 6 GHz v01r04)  
Original SAR = 0.977 W/kg, therefore second times repeat SAR is required.  
Repeat SAR = 0.913 W/kg < 1.45W/kg  
SAR variation= -6.55% < 20%

## LTE

P-sensor	Band	Mode	channel	RB	Offset	distance (mm)	Test Position	Max Tune-up (dBm)	AVG Power (dBm)	Area Scan	SAR 1g	Reported SAR 1g	Note
on	LTE Band 2	QPSK20M	18900	1	0	0	Bottom	23.00	22.90	0.767	0.755	0.773	
		QPSK20M	18700	1	0	0	Bottom	23.00	22.88	0.901	0.889	<b>0.914</b>	1
		QPSK20M	19100	1	0	0	Bottom	23.00	22.85	0.800	0.789	0.817	1
		QPSK20M	18900	1	49	0	Bottom	23.00	22.82	0.721	0.734	0.765	1
		QPSK20M	18900	1	99	0	Bottom	23.00	22.73	0.726	0.731	0.778	1
off		QPSK20M	18900	100	0	0	Bottom	22.00	21.94	0.602	0.608	0.616	1
on	LTE Band 2	QPSK20M	18900	1	0	14	Bottom	24.00	23.88	0.323	0.324	0.333	
off		QPSK20M	18900	50	0	0	Bottom	22.00	21.99	0.563	0.565	0.566	
off		QPSK20M	18900	50	0	14	Bottom	23.00	22.97	0.224	0.236	0.238	

P-sensor	Band	Mode	channel	RB	Offset	distance (mm)	Test Position	Max Tune-up (dBm)	AVG Power (dBm)	Area Scan	SAR 1g	Reported SAR 1g	Note
on	LTE Band 4	QPSK20M	20175	1	0	0	Bottom	23.00	22.89	0.923	0.923	0.947	
		QPSK20M	20050	1	0	0	Bottom	23.00	22.87	0.880	0.884	0.911	1
		QPSK20M	20300	1	0	0	Bottom	23.00	22.86	0.954	0.958	<b>0.989</b>	1
		QPSK20M	20300	1	0	0	Bottom	23.00	22.86	0.844	0.891	0.920	2
		QPSK20M	20175	1	49	0	Bottom	23.00	22.77	0.856	0.891	0.939	1
		QPSK20M	20175	1	99	0	Bottom	23.00	22.71	0.843	0.872	0.932	1
		QPSK20M	20175	100	0	0	Bottom	22.00	21.93	0.708	0.733	0.745	1
off		QPSK20M	20175	1	0	14	Bottom	24.00	23.85	0.383	0.392	0.406	
on	LTE Band 4	QPSK20M	20175	50	0	0	Bottom	22.00	21.93	0.695	0.722	0.734	
off		QPSK20M	20175	50	0	14	Bottom	23.00	22.89	0.274	0.293	0.301	

P-sensor	Band	Mode	channel	RB	Offset	distance (mm)	Test Position	Max Tune-up (dBm)	AVG Power (dBm)	Area Scan	SAR 1g	Reported SAR 1g	Note
on	LTE Band 5	QPSK10M	20525	1	0	0	Bottom	23.00	22.86	0.508	0.504	0.521	
		QPSK10M	20450	1	0	0	Bottom	23.00	22.81	0.516	0.511	0.534	
		QPSK10M	20600	1	0	0	Bottom	23.00	22.85	0.535	0.526	<b>0.544</b>	
off		QPSK10M	20525	1	0	14	Bottom	25.00	24.90	0.194	0.208	0.213	
on	LTE Band 5	QPSK10M	20525	25	0	0	Bottom	22.00	21.95	0.410	0.408	0.413	
off		QPSK10M	20525	25	0	14	Bottom	24.00	23.99	0.152	0.164	0.164	

P-sensor	Band	Mode	channel	RB	Offset	distance (mm)	Test Position	Max Tune-up (dBm)	AVG Power (dBm)	Area Scan	SAR 1g	Reported SAR 1g	Note
on	LTE Band 7	QPSK20M	21100	1	0	0	Bottom	23.00	22.87	0.890	0.818	0.843	
		QPSK20M	20850	1	0	0	Bottom	23.00	22.82	0.784	0.717	0.747	1
		QPSK20M	21350	1	0	0	Bottom	23.00	22.82	0.929	0.856	<b>0.892</b>	1
		QPSK20M	21100	1	49	0	Bottom	23.00	22.75	0.883	0.805	0.853	1
		QPSK20M	21100	1	99	0	Bottom	23.00	22.69	0.827	0.830	0.891	1
		QPSK20M	21100	100	0	0	Bottom	22.00	21.91	0.685	0.682	0.696	1
off		QPSK20M	21100	1	0	14	Bottom	24.00	23.91	0.397	0.378	0.386	
on	LTE Band 7	QPSK20M	21100	50	0	0	Bottom	22.00	21.96	0.657	0.653	0.659	
off		QPSK20M	21100	50	0	14	Bottom	23.00	22.94	0.292	0.288	0.292	

P-sensor	Band	Mode	channel	RB	Offset	distance (mm)	Test Position	Max Tune-up (dBm)	AVG Power (dBm)	Area Scan	SAR 1g	Reported SAR 1g	Note
on	LTE Band 12	QPSK10M	23095	1	0	0	Bottom	23.00	22.89	0.525	0.526	0.539	
		QPSK10M	23060	1	0	0	Bottom	23.00	22.85	0.510	0.514	0.532	
		QPSK10M	23130	1	0	0	Bottom	23.00	22.87	0.538	0.542	<b>0.558</b>	
off		QPSK10M	23095	1	0	14	Bottom	25.00	24.86	0.211	0.223	0.230	
on	LTE Band 12	QPSK10M	23095	25	0	0	Bottom	22.00	21.98	0.407	0.410	0.412	
off		QPSK10M	23095	25	0	14	Bottom	24.00	23.95	0.181	0.191	0.193	

P-sensor	Band	Mode	channel	RB	Offset	distance (mm)	Test Position	Max Tune-up (dBm)	AVG Power (dBm)	Area Scan	SAR 1g	Reported SAR 1g	Note
on	LTE Band 13	QPSK10M	23230	1	0	0	Bottom	23.00	22.91	0.610	0.614	<b>0.627</b>	
off		QPSK10M	23230	1	0	14	Bottom	25.00	24.92	0.287	0.299	0.305	
on	LTE Band 13	QPSK10M	23230	25	0	0	Bottom	22.00	21.92	0.462	0.458	0.467	
off		QPSK10M	23230	25	0	14	Bottom	24.00	23.93	0.213	0.221	0.225	

P-sensor	Band	Mode	channel	RB	Offset	distance (mm)	Test Position	Max Tune-up (dBm)	AVG Power (dBm)	Area Scan	SAR 1g	Reported SAR 1g	Note
on	LTE Band 14	QPSK10M	23330	1	0	0	Bottom	23.00	22.86	0.550	0.549	<b>0.567</b>	
off		QPSK10M	23330	1	0	14	Bottom	25.00	24.83	0.232	0.245	0.255	
on	LTE Band 14	QPSK10M	23330	25	0	0	Bottom	22.00	21.87	0.445	0.437	0.450	
off		QPSK10M	23330	25	0	14	Bottom	24.00	23.84	0.188	0.195	0.202	



P-sensor	Band	Mode	channel	RB	Offset	distance (mm)	Test Position	Max Tune-up (dBm)	AVG Power (dBm)	Area Scan	SAR 1g	Reported SAR 1g	Note
on	LTE Band 17	QPSK10M	23790	1	0	0	Bottom	23.00	22.87	0.500	0.525	0.541	
		QPSK10M	23780	1	0	0	Bottom	23.00	22.86	0.525	0.521	0.538	
		QPSK10M	23800	1	0	0	Bottom	23.00	22.85	0.529	0.524	<b>0.542</b>	
off		QPSK10M	23790	1	0	14	Bottom	25.00	24.92	0.229	0.241	0.245	
on	LTE Band 17	QPSK10M	23790	25	0	0	Bottom	22.00	21.96	0.420	0.418	0.422	
off		QPSK10M	23790	25	0	14	Bottom	24.00	23.91	0.186	0.195	0.199	

P-sensor	Band	Mode	channel	RB	Offset	distance (mm)	Test Position	Max Tune-up (dBm)	AVG Power (dBm)	Area Scan	SAR 1g	Reported SAR 1g	Note	
on	LTE Band 25	QPSK20M	26365	1	0	0	Bottom	23.00	22.86	0.850	0.832	0.859		
		QPSK20M	26140	1	0	0	Bottom	23.00	22.84	0.973	0.951	<b>0.987</b>	1	
		QPSK20M	26590	1	0	0	Bottom	23.00	22.82	0.824	0.805	0.839	1	
		QPSK20M	26365	1	49	0	0	Bottom	23.00	22.72	0.703	0.708	0.755	1
		QPSK20M	26365	1	99	0	0	Bottom	23.00	22.65	0.684	0.688	0.746	1
		QPSK20M	26365	100	0	0	0	Bottom	22.00	21.90	0.576	0.581	0.595	1
off		QPSK20M	26365	1	0	14	Bottom	24.00	23.89	0.310	0.306	0.314		
on	LTE Band 25	QPSK20M	26365	50	0	0	Bottom	22.00	21.95	0.546	0.551	0.557		
off		QPSK20M	26365	50	0	14	Bottom	23.00	22.98	0.231	0.242	0.243		

P-sensor	Band	Mode	channel	RB	Offset	distance (mm)	Test Position	Max Tune-up (dBm)	AVG Power (dBm)	Area Scan	SAR 1g	Reported SAR 1g	Note
on	LTE Band 26	QPSK15M	26865	1	0	0	Bottom	23.00	22.87	0.506	0.498	0.513	
		QPSK15M	26765	1	0	0	Bottom	23.00	22.83	0.495	0.494	0.514	
		QPSK15M	26965	1	0	0	Bottom	23.00	22.85	0.505	0.507	<b>0.525</b>	
off		QPSK15M	26865	1	0	14	Bottom	25.00	24.89	0.248	0.259	0.266	
on	LTE Band 26	QPSK15M	26865	36	0	0	Bottom	22.00	21.96	0.401	0.400	0.404	
off		QPSK15M	26865	36	0	14	Bottom	24.00	23.98	0.202	0.212	0.213	

P-sensor	Band	Mode	channel	RB	Offset	distance (mm)	Test Position	Max Tune-up (dBm)	AVG Power (dBm)	Area Scan	SAR 1g	Reported SAR 1g	Note
on	LTE Band 30	QPSK10M	27710	1	0	0	Bottom	16.50	16.38	0.339	0.328	<b>0.337</b>	
off		QPSK10M	27710	1	0	14	Bottom	17.50	17.39	0.157	0.156	0.160	
on	LTE Band 30	QPSK10M	27710	25	0	0	Bottom	15.50	15.39	0.267	0.268	0.275	
off		QPSK10M	27710	25	0	14	Bottom	16.50	16.40	0.131	0.131	0.134	

P-sensor	Band	Mode	channel	RB	Offset	distance (mm)	Test Position	Max Tune-up (dBm)	AVG Power (dBm)	Area Scan	SAR 1g	Reported SAR 1g	Note
on	LTE Band 38	QPSK20M	38000	1	0	0	Bottom	23.00	22.87	0.397	0.364	0.375	
		QPSK20M	37850	1	0	0	Bottom	23.00	22.86	0.376	0.351	0.362	
		QPSK20M	38150	1	0	0	Bottom	23.00	22.83	0.412	0.385	<b>0.400</b>	
off		QPSK20M	38000	1	0	14	Bottom	24.00	23.86	0.176	0.176	0.182	
on	LTE Band 38	QPSK20M	38000	50	0	0	Bottom	22.00	21.96	0.264	0.263	0.265	
off		QPSK20M	38000	50	0	14	Bottom	23.00	22.95	0.110	0.117	0.118	

P-sensor	Band	Mode	channel	RB	Offset	distance (mm)	Test Position	Max Tune-up (dBm)	AVG Power (dBm)	Area Scan	SAR 1g	Reported SAR 1g	Note
on	LTE Band 41	QPSK20M	40620	1	0	0	Bottom	23.00	22.90	0.585	0.501	<b>0.513</b>	
		QPSK20M	39750	1	0	0	Bottom	23.00	22.89	0.428	0.374	0.384	
		QPSK20M	41490	1	0	0	Bottom	23.00	22.86	0.479	0.477	0.493	
off		QPSK20M	40620	1	0	14	Bottom	24.00	23.82	0.223	0.225	0.235	
		QPSK20M	40620	1	0	14	Bottom	27.00	26.27	0.346	0.305	0.361	
on	LTE Band 41	QPSK20M	40620	50	0	0	Bottom	22.00	21.96	0.406	0.412	0.416	
off		QPSK20M	40620	50	0	14	Bottom	23.00	22.91	0.154	0.151	0.154	
		QPSK20M	40620	50	0	14	Bottom	26.00	25.38	0.294	0.217	0.250	

P-sensor	Band	Mode	channel	RB	Offset	distance (mm)	Test Position	Max Tune-up (dBm)	AVG Power (dBm)	Area Scan	SAR 1g	Reported SAR 1g	Note
on	LTE Band 48	QPSK20M	56207	1	0	0	Bottom	21.00	20.90	0.142	0.109	0.112	
		QPSK20M	55340	1	0	0	Bottom	21.00	20.86	0.163	0.132	<b>0.136</b>	
		QPSK20M	56640	1	0	0	Bottom	21.00	20.88	0.125	0.100	0.103	
off		QPSK20M	56207	1	0	14	Bottom	22.00	21.92	0.053	0.047	0.048	
on	LTE Band 48	QPSK20M	56207	50	0	0	Bottom	20.00	19.96	0.102	0.084	0.084	
off		QPSK20M	56207	50	0	14	Bottom	21.00	20.91	0.041	0.037	0.038	

P-sensor	Band	Mode	channel	RB	Offset	distance (mm)	Test Position	Max Tune-up (dBm)	AVG Power (dBm)	Area Scan	SAR 1g	Reported SAR 1g	Note
on	LTE Band 66	QPSK20M	132322	1	0	0	Bottom	20.50	20.37	0.954	0.890	0.917	
		QPSK20M	132072	1	0	0	Bottom	20.50	20.35	0.913	0.862	0.892	1
		QPSK20M	132572	1	0	0	Bottom	20.50	20.34	1.000	0.933	<b>0.968</b>	1
		QPSK20M	132322	1	49	0	Bottom	20.50	20.29	0.825	0.860	0.903	1
		QPSK20M	132322	1	99	0	Bottom	20.50	20.22	0.805	0.841	0.897	1
		QPSK20M	132322	100	0	0	Bottom	19.50	19.41	0.653	0.687	0.701	1
off		QPSK20M	132322	1	0	14	Bottom	21.50	21.36	0.377	0.384	0.397	
on	LTE Band 66	QPSK20M	132322	50	0	0	Bottom	19.50	19.46	0.671	0.707	0.714	
off		QPSK20M	132322	50	0	14	Bottom	20.50	20.45	0.277	0.292	0.295	

P-sensor	Band	Mode	channel	RB	Offset	distance (mm)	Test Position	Max Tune-up (dBm)	AVG Power (dBm)	Area Scan	SAR 1g	Reported SAR 1g	Note
on	LTE Band 71	QPSK20M	133297	1	0	0	Bottom	23.00	22.88	0.614	0.630	0.648	
		QPSK20M	133222	1	0	0	Bottom	23.00	22.85	0.529	0.548	0.567	
		QPSK20M	133372	1	0	0	Bottom	23.00	22.86	0.663	0.675	<b>0.697</b>	
off		QPSK20M	133297	1	0	14	Bottom	25.00	24.87	0.197	0.208	0.214	
on	LTE Band 71	QPSK20M	133297	50	0	0	Bottom	22.00	21.97	0.509	0.523	0.527	
off		QPSK20M	133297	50	0	14	Bottom	24.00	23.96	0.173	0.180	0.182	

Note:

- Highest reported SAR is > 0.8 W/kg. Added second highest power channel for this test position
- Repeated measurements are required only when the measured SAR is  $\geq 0.80$  W/kg. If the measured SAR values are < 1.45 W/kg with  $\leq 20\%$  variation, only one repeated measurement is required to reaffirm that the results are not expected to have substantial variations, which may introduce significant compliance concerns. (Per KDB 865664 D01 SAR measurement 100 MHz to 6 GHz v01r04)  
 Original SAR = 0.958 W/kg, therefore second times repeat SAR is required.  
 Repeat SAR = 0.891 W/kg < 1.45W/kg  
 SAR variation= -6.99% < 20%

## 11. Test Layout

### Specific Absorption Rate Test Layout

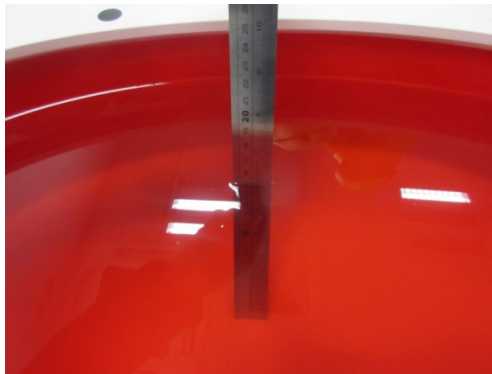


Liquid depth in the flat Phantom ( $\geq 15\text{cm}$  depth)  
HSL(750MHz)

HSL(900MHz)



HSL(1750-3700MHz)



**Appendix A. SAR Plots of System Verification**

(Pls See BTL-FCC SAR-1-2112T127\_Appendix A.)

**Appendix B. SAR Plots of SAR Measurement**

(Pls See BTL-FCC SAR-1-2112T127\_Appendix B.)

**Appendix C. Calibration Certificate**

(Pls See BTL-FCC SAR-1-2112T127\_Appendix C.)

**Appendix D. Photographs of the Test Set-Up**

(Pls See BTL-FCC SAR-1-2112T127\_Appendix D.)

**End of Test Report**