

System Check_Head_750MHz

DUT: D750V3-1012

Communication System: ; Frequency: 750.0

Medium: HSL_750_220421 Medium parameters used: $f= 750.0$ MHz; $\sigma= 0.894$ S/m; $\epsilon_r = 41.9$

Ambient Temperature: 23.5°C; Liquid Temperature: 22.5°C

DASY6 Configuration:

- Probe: EX3DV4 - SN7692; ConvF(10.94, 10.94, 10.94); Calibrated: 2021-11-03
- Sensor-Surface: 1.4 mm
- Electronics: DAE4 Sn1694; Calibrated: 2021-11-03
- Phantom: ELI V8.0 (20deg probe tilt); Serial: 2156; Section: Flat
- Measurement Software: cDASY6 V6.6.0.13926
- UID: , 0--
- MAIA: Area Scan: N/A; Zoom Scan: N/A

Area Scan (40.0 mm x 90.0 mm): Measurement Grid: 10.0 mm x 15.0 mm

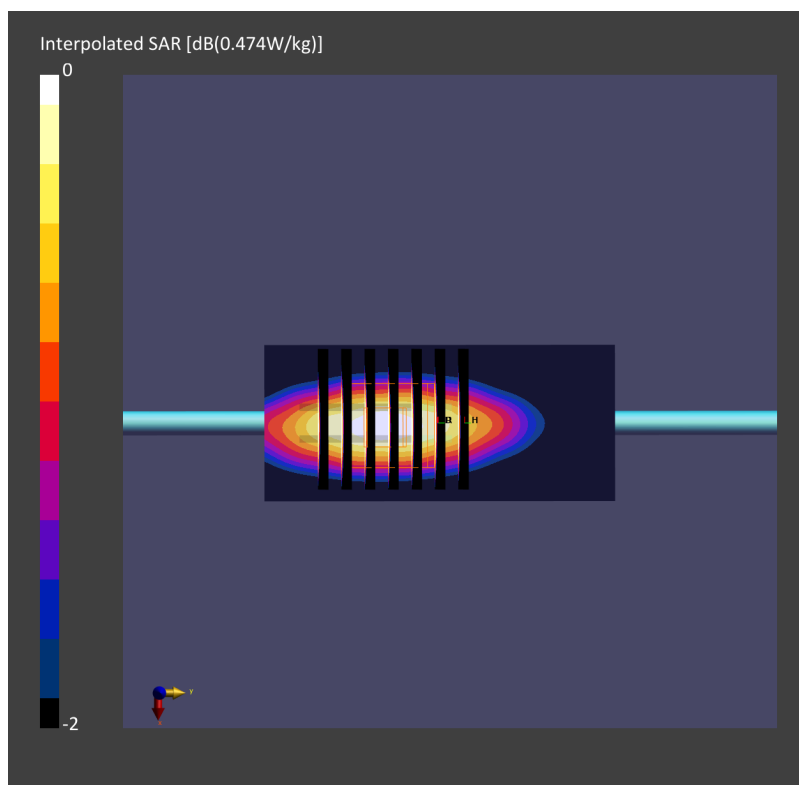
SAR (1g) = 0.411 W/kg; SAR (10g) = 0.275 W/kg;

Zoom Scan (32.0 mm x 32.0 mm x 30.0 mm): Measurement Grid: 6.0 mm x 6.0 mm x 1.5 mm

Power Drift = 0.03 dB

SAR (1g) = 0.417 W/kg; SAR (10g) = 0.277 W/kg;

psAPD (1.0cm², sq) = 0 [W/m²]; psAPD (4.0cm², sq) = 0 [W/m²]



System Check_Head_835MHz

DUT: D835V2-499

Communication System: ; Frequency: 835.0

Medium: HSL_850_220421 Medium parameters used: $f= 835.0$ MHz; $\sigma= 0.929$ S/m; $\epsilon_r = 41.7$

Ambient Temperature: 23.5°C; Liquid Temperature: 22.5°C

DASY6 Configuration:

- Probe: EX3DV4 - SN7692; ConvF(10.65, 10.65, 10.65); Calibrated: 2021-11-03
- Sensor-Surface: 1.4 mm
- Electronics: DAE4 Sn1694; Calibrated: 2021-11-03
- Phantom: ELI V8.0 (20deg probe tilt); Serial: 2156; Section: Flat
- Measurement Software: cDASY6 V6.6.0.13926
- UID: , 0--
- MAIA: Area Scan: N/A; Zoom Scan: N/A

Area Scan (40.0 mm x 90.0 mm): Measurement Grid: 10.0 mm x 15.0 mm

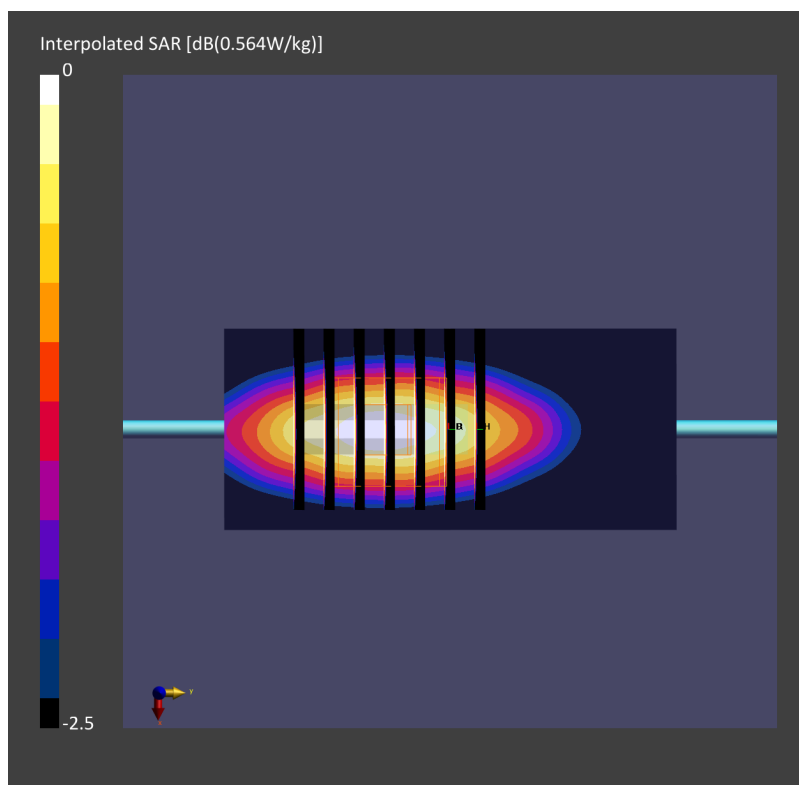
SAR (1g) = 0.487 W/kg; SAR (10g) = 0.320 W/kg;

Zoom Scan (32.0 mm x 32.0 mm x 30.0 mm): Measurement Grid: 6.0 mm x 6.0 mm x 1.5 mm

Power Drift = -0.06 dB

SAR (1g) = 0.494 W/kg; SAR (10g) = 0.327 W/kg;

psAPD (1.0cm², sq) = 0 [W/m²]; psAPD (4.0cm², sq) = 0 [W/m²]



System Check_Head_1750MHz

DUT: D1750V2-1068

Communication System: ; Frequency: 1750.0

Medium: HSL_1750_220419 Medium parameters used: $f= 1750.0$ MHz; $\sigma= 1.36$ S/m; $\epsilon_r = 40.5$

Ambient Temperature: 23.5°C; Liquid Temperature: 22.5°C

DASY6 Configuration:

- Probe: EX3DV4 - SN7692; ConvF(8.74, 8.74, 8.74); Calibrated: 2021-11-03
- Sensor-Surface: 1.4 mm
- Electronics: DAE4 Sn1694; Calibrated: 2021-11-03
- Phantom: ELI V8.0 (20deg probe tilt); Serial: 2156; Section: Flat
- Measurement Software: cDASY6 V6.6.0.13926
- UID: , 0--
- MAIA: Area Scan: N/A; Zoom Scan: N/A

Area Scan (40.0 mm x 90.0 mm): Measurement Grid: 10.0 mm x 15.0 mm

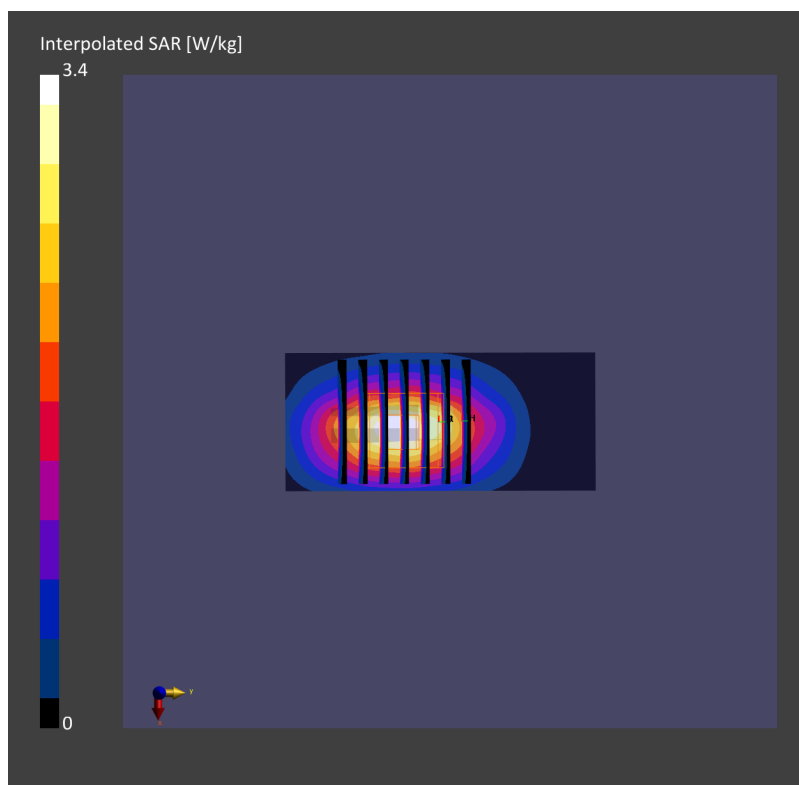
SAR (1g) = 1.81 W/kg; SAR (10g) = 0.984 W/kg;

Zoom Scan (32.0 mm x 32.0 mm x 30.0 mm): Measurement Grid: 6.0 mm x 6.0 mm x 1.5 mm

Power Drift = -0.02 dB

SAR (1g) = 1.85 W/kg; SAR (10g) = 0.997 W/kg;

psAPD (1.0cm², sq) = 0 [W/m²]; psAPD (4.0cm², sq) = 0 [W/m²]



System Check_Head_1900MHz

DUT: D1900V2-5d041

Communication System: ; Frequency: 1900.0

Medium: HSL_1900_220419 Medium parameters used: $f= 1900.0$ MHz; $\sigma= 1.43$ S/m; $\epsilon_r = 38.9$

Ambient Temperature: 23.5°C; Liquid Temperature: 22.5°C

DASY6 Configuration:

- Probe: EX3DV4 - SN7692; ConvF(8.5, 8.5, 8.5); Calibrated: 2021-11-03
- Sensor-Surface: 1.4 mm
- Electronics: DAE4 Sn1694; Calibrated: 2021-11-03
- Phantom: ELI V8.0 (20deg probe tilt); Serial: 2156; Section: Flat
- Measurement Software: cDASY6 V6.6.0.13926
- UID: , 0--
- MAIA: Area Scan: N/A; Zoom Scan: N/A

Area Scan (40.0 mm x 90.0 mm): Measurement Grid: 10.0 mm x 15.0 mm

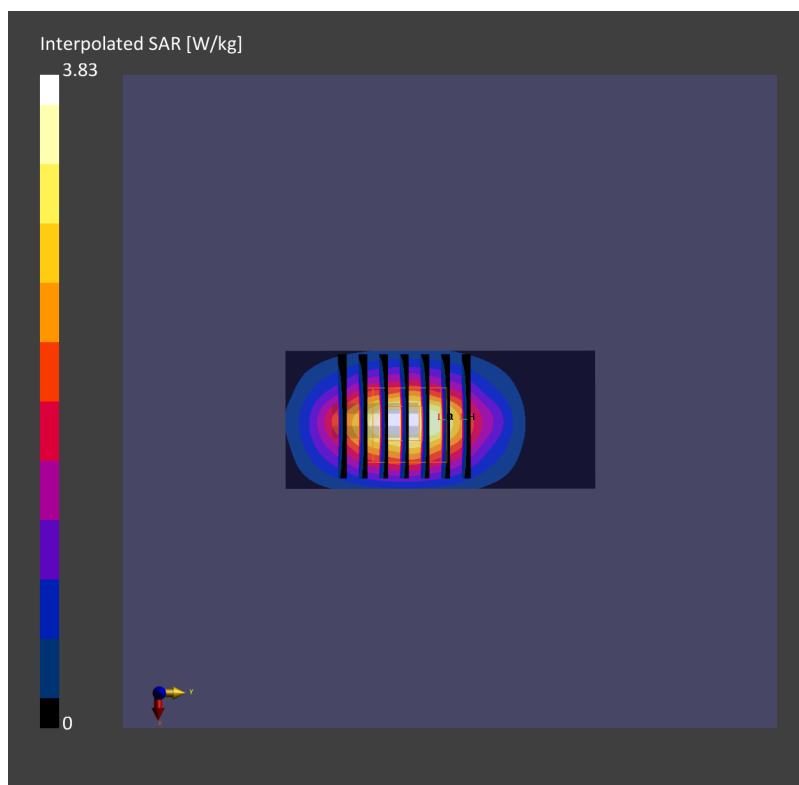
SAR (1g) = 2.02 W/kg; SAR (10g) = 1.06 W/kg;

Zoom Scan (32.0 mm x 32.0 mm x 30.0 mm): Measurement Grid: 6.0 mm x 6.0 mm x 1.5 mm

Power Drift = -0.07 dB

SAR (1g) = 2.05 W/kg; SAR (10g) = 1.08 W/kg;

psAPD (1.0cm², sq) = 0 [W/m²]; psAPD (4.0cm², sq) = 0 [W/m²]



System Check_Head_2600MHz

DUT: D2600V2-1008

Communication System: ; Frequency: 2600.0

Medium: HSL_2600_220420 Medium parameters used: $f=2600.0$ MHz; $\sigma=2.01$ S/m; $\epsilon_r=38.4$

Ambient Temperature: 23.5°C; Liquid Temperature: 22.5°C

DASY6 Configuration:

- Probe: EX3DV4 - SN7692; ConvF(8.14, 8.14, 8.14); Calibrated: 2021-11-03
- Sensor-Surface: 1.4 mm
- Electronics: DAE4 Sn1694; Calibrated: 2021-11-03
- Phantom: ELI V8.0 (20deg probe tilt); Serial: 2156; Section: Flat
- Measurement Software: cDASY6 V6.6.0.13926
- UID: , 0--
- MAIA: Area Scan: N/A; Zoom Scan: N/A

Area Scan (40.0 mm x 96.0 mm): Measurement Grid: 10.0 mm x 12.0 mm

SAR (1g) = 2.68 W/kg; SAR (10g) = 1.20 W/kg;

Zoom Scan (30.0 mm x 30.0 mm x 30.0 mm): Measurement Grid: 5.0 mm x 5.0 mm x 1.5 mm

Power Drift = -0.06 dB

SAR (1g) = 2.70 W/kg; SAR (10g) = 1.23 W/kg;

psAPD (1.0cm², sq) = 0 [W/m²]; psAPD (4.0cm², sq) = 0 [W/m²]

