

## System Check\_Head\_750MHz

### DUT: D750V3-1107

Communication System: CW; Frequency: 750 MHz; Duty Cycle: 1:1

Medium: HSL\_750\_211017 Medium parameters used:  $f = 750$  MHz;  $\sigma = 0.9$  S/m;  $\epsilon_r = 43.347$ ;  $\rho = 1000$  kg/m<sup>3</sup>

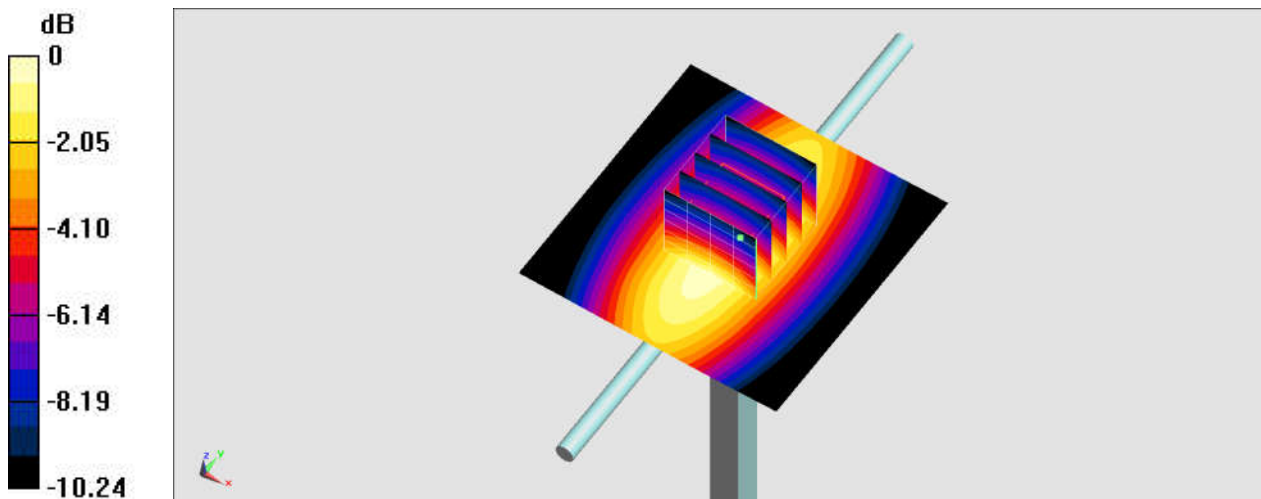
Ambient Temperature : 23.5 °C ; Liquid Temperature : 22.5 °C

### DASY5 Configuration:

- Probe: ES3DV3 - SN3184; ConvF(6.59, 6.59, 6.59) @ 750 MHz; Calibrated: 2021/9/23
- Sensor-Surface: 3mm (Mechanical Surface Detection)
- Electronics: DAE4 Sn376; Calibrated: 2020/11/23
- Phantom: ELI V8.0 (20deg probe tilt); Type: QD OVA 004 AA; Serial: 2055
- Measurement SW: DASY52, Version 52.10 (4); SEMCAD X Version 14.6.14 (7501)

**Pin=250mW/Area Scan (61x61x1):** Interpolated grid: dx=1.500 mm, dy=1.500 mm  
Maximum value of SAR (interpolated) = 2.47 W/kg

**Pin=250mW/Zoom Scan (5x5x7)/Cube 0:** Measurement grid: dx=8mm, dy=8mm, dz=5mm  
Reference Value = 54.64 V/m; Power Drift = -0.18 dB  
Peak SAR (extrapolated) = 3.02 W/kg  
**SAR(1 g) = 2.1 W/kg; SAR(10 g) = 1.4 W/kg**  
Maximum value of SAR (measured) = 2.45 W/kg



0 dB = 2.45 W/kg = 3.89 dBW/kg

## System Check\_Head\_750MHz

### DUT: D750V3-1107

Communication System: CW ; Frequency: 750 MHz;Duty Cycle: 1:1

Medium: HSL\_750\_211020 Medium parameters used:  $f = 750 \text{ MHz}$ ;  $\sigma = 0.902 \text{ S/m}$ ;  $\epsilon_r = 42.988$ ;  $\rho = 1000 \text{ kg/m}^3$

Ambient Temperature :  $23.5 \text{ }^\circ\text{C}$ ; Liquid Temperature :  $22.5 \text{ }^\circ\text{C}$

#### DASY5 Configuration:

- Probe: EX3DV4 - SN7439; ConvF(10.26, 10.26, 10.26) @ 750 MHz; Calibrated: 2021/2/23
- Sensor-Surface: 1.4mm (Mechanical Surface Detection)
- Electronics: DAE4 Sn376; Calibrated: 2020/11/23
- Phantom: ELI V8.0 (20deg probe tilt); Type: QD OVA 004 AA; Serial: 2055
- Measurement SW: DASY52, Version 52.10 (4);SEMCAD X Version 14.6.14 (7501)

**Pin=250mW/Area Scan (61x61x1):** Interpolated grid:  $dx=1.500 \text{ mm}$ ,  $dy=1.500 \text{ mm}$

Maximum value of SAR (interpolated) =  $2.62 \text{ W/kg}$

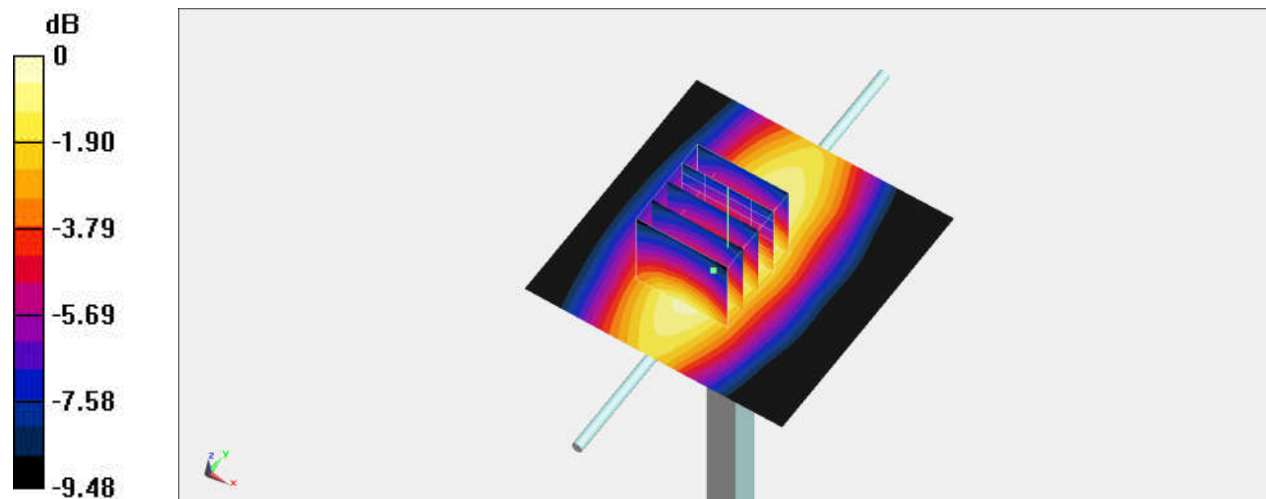
**Pin=250mW/Zoom Scan (5x5x7)/Cube 0:** Measurement grid:  $dx=8\text{mm}$ ,  $dy=8\text{mm}$ ,  $dz=5\text{mm}$

Reference Value =  $56.68 \text{ V/m}$ ; Power Drift =  $-0.01 \text{ dB}$

Peak SAR (extrapolated) =  $2.70 \text{ W/kg}$

**SAR(1 g) =  $2.04 \text{ W/kg}$ ; SAR(10 g) =  $1.41 \text{ W/kg}$**

Maximum value of SAR (measured) =  $2.53 \text{ W/kg}$



0 dB =  $2.53 \text{ W/kg} = 4.03 \text{ dBW/kg}$

## System Check\_Head\_835MHz

**DUT: D835V2-4d167**

Communication System: CW; Frequency: 835 MHz; Duty Cycle: 1:1

Medium: HSL\_850\_211017 Medium parameters used:  $f = 835 \text{ MHz}$ ;  $\sigma = 0.936 \text{ S/m}$ ;  $\epsilon_r = 43.051$ ;  $\rho = 1000 \text{ kg/m}^3$

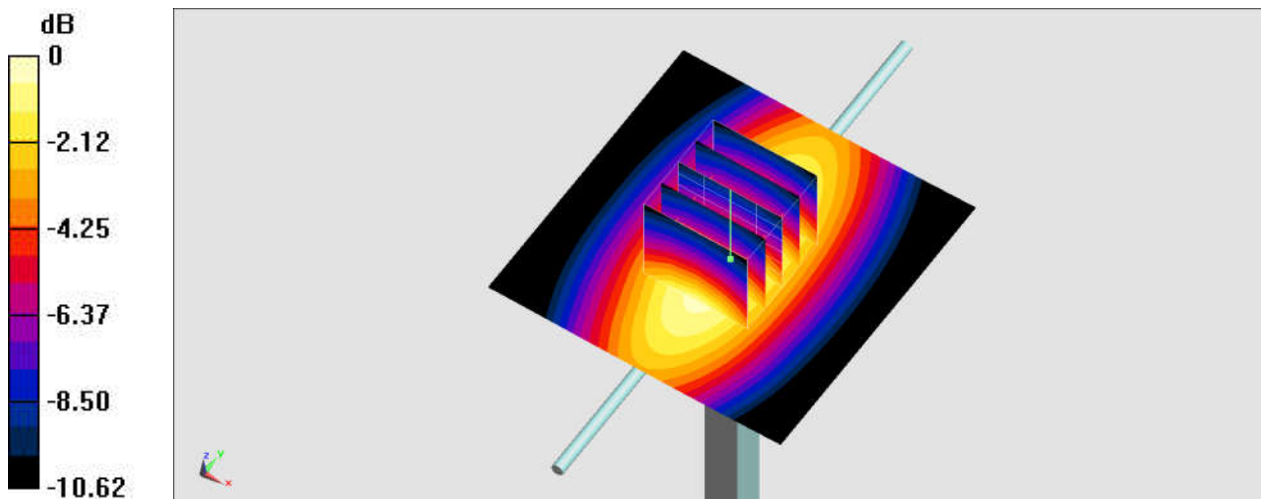
Ambient Temperature :  $23.5 \text{ }^\circ\text{C}$ ; Liquid Temperature :  $22.5 \text{ }^\circ\text{C}$

DASY5 Configuration:

- Probe: ES3DV3 - SN3184; ConvF(6.49, 6.49, 6.49) @ 835 MHz; Calibrated: 2021/9/23
- Sensor-Surface: 3mm (Mechanical Surface Detection)
- Electronics: DAE4 Sn376; Calibrated: 2020/11/23
- Phantom: ELI V8.0 (20deg probe tilt); Type: QD OVA 004 AA; Serial: 2055
- Measurement SW: DASY52, Version 52.10 (4); SEMCAD X Version 14.6.14 (7501)

**Pin=250mW/Area Scan (61x61x1):** Interpolated grid:  $dx=1.500 \text{ mm}$ ,  $dy=1.500 \text{ mm}$   
Maximum value of SAR (interpolated) =  $2.90 \text{ W/kg}$

**Pin=250mW/Zoom Scan (5x5x7)/Cube 0:** Measurement grid:  $dx=8\text{mm}$ ,  $dy=8\text{mm}$ ,  $dz=5\text{mm}$   
Reference Value =  $57.60 \text{ V/m}$ ; Power Drift =  $-0.13 \text{ dB}$   
Peak SAR (extrapolated) =  $3.67 \text{ W/kg}$   
**SAR(1 g) =  $2.5 \text{ W/kg}$ ; SAR(10 g) =  $1.64 \text{ W/kg}$**   
Maximum value of SAR (measured) =  $2.94 \text{ W/kg}$



0 dB =  $2.94 \text{ W/kg} = 4.68 \text{ dBW/kg}$

## System Check\_Head\_835MHz

**DUT: D835V2-4d167**

Communication System: CW; Frequency: 835 MHz; Duty Cycle: 1:1

Medium: HSL\_850\_211020 Medium parameters used:  $f = 835 \text{ MHz}$ ;  $\sigma = 0.937 \text{ S/m}$ ;  $\epsilon_r = 42.692$ ;  $\rho = 1000 \text{ kg/m}^3$

Ambient Temperature :  $23.5 \text{ }^\circ\text{C}$ ; Liquid Temperature :  $22.5 \text{ }^\circ\text{C}$

DASY5 Configuration:

- Probe: EX3DV4 - SN7439; ConvF(9.95, 9.95, 9.95) @ 835 MHz; Calibrated: 2021/2/23
- Sensor-Surface: 1.4mm (Mechanical Surface Detection)
- Electronics: DAE4 Sn376; Calibrated: 2020/11/23
- Phantom: ELI V8.0 (20deg probe tilt); Type: QD OVA 004 AA; Serial: 2055
- Measurement SW: DASY52, Version 52.10 (4); SEMCAD X Version 14.6.14 (7501)

**Pin=50mW/Area Scan (61x61x1):** Interpolated grid:  $dx=1.500 \text{ mm}$ ,  $dy=1.500 \text{ mm}$   
Maximum value of SAR (interpolated) =  $0.615 \text{ W/kg}$

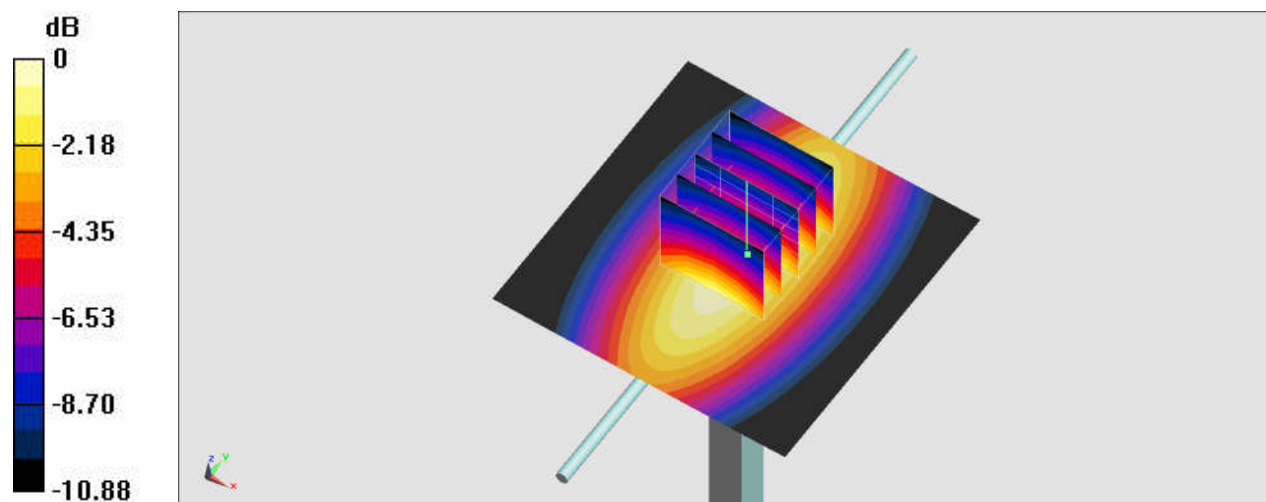
**Pin=50mW/Zoom Scan (5x5x7)/Cube 0:** Measurement grid:  $dx=8\text{mm}$ ,  $dy=8\text{mm}$ ,  $dz=5\text{mm}$

Reference Value =  $26.84 \text{ V/m}$ ; Power Drift =  $-0.16 \text{ dB}$

Peak SAR (extrapolated) =  $0.690 \text{ W/kg}$

**SAR(1 g) =  $0.458 \text{ W/kg}$ ; SAR(10 g) =  $0.299 \text{ W/kg}$**

Maximum value of SAR (measured) =  $0.610 \text{ W/kg}$



$0 \text{ dB} = 0.610 \text{ W/kg} = -2.15 \text{ dBW/kg}$

## System Check\_Head\_835MHz

### DUT: D835V2-4d167

Communication System: CW; Frequency: 835 MHz; Duty Cycle: 1:1

Medium: HSL\_850\_211125 Medium parameters used:  $f = 835$  MHz;  $\sigma = 0.894$  S/m;  $\epsilon_r = 42.056$ ;  $\rho = 1000$  kg/m<sup>3</sup>

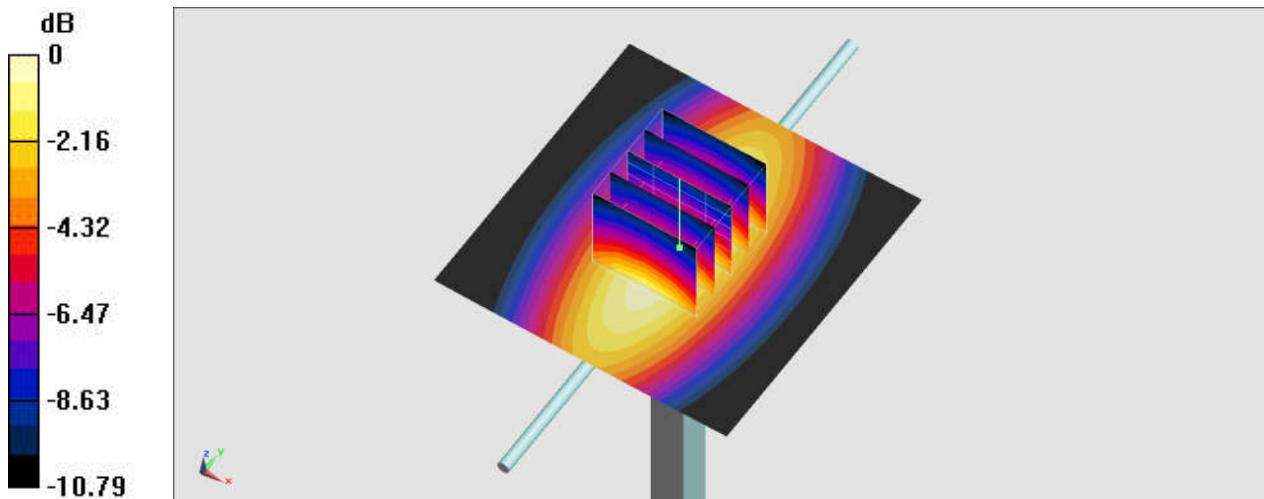
Ambient Temperature : 23.2 °C; Liquid Temperature : 22.2 °C

DASY5 Configuration:

- Probe: EX3DV4 - SN3931; ConvF(9.8, 9.8, 9.8) @ 835 MHz; Calibrated: 2021/10/21
- Sensor-Surface: 1.4mm (Mechanical Surface Detection)
- Electronics: DAE4 Sn699; Calibrated: 2021/2/16
- Phantom: ELI V8.0 (20deg probe tilt); Type: QD OVA 004 AA; Serial: 2055
- Measurement SW: DASY52, Version 52.10 (4); SEMCAD X Version 14.6.14 (7501)

**Pin=50mW/Area Scan (61x61x1):** Interpolated grid: dx=1.500 mm, dy=1.500 mm  
Maximum value of SAR (interpolated) = 0.624 W/kg

**Pin=50mW/Zoom Scan (5x5x7)/Cube 0:** Measurement grid: dx=8mm, dy=8mm, dz=5mm  
Reference Value = 27.71 V/m; Power Drift = -0.05 dB  
Peak SAR (extrapolated) = 0.702 W/kg  
**SAR(1 g) = 0.460 W/kg; SAR(10 g) = 0.300 W/kg**  
Maximum value of SAR (measured) = 0.621 W/kg



## System Check\_Head\_1750MHz

### DUT: D1750V2-1112

Communication System: CW; Frequency: 1750 MHz; Duty Cycle: 1:1

Medium: HSL\_1750\_211018 Medium parameters used:  $f = 1750$  MHz;  $\sigma = 1.372$  S/m;  $\epsilon_r = 40.9$ ;  $\rho = 1000$  kg/m<sup>3</sup>

Ambient Temperature : 23.5 °C ; Liquid Temperature : 22.5 °C

#### DASY5 Configuration:

- Probe: ES3DV3 - SN3184; ConvF(5.56, 5.56, 5.56) @ 1750 MHz; Calibrated: 2021/9/23
- Sensor-Surface: 3mm (Mechanical Surface Detection)
- Electronics: DAE4 Sn376; Calibrated: 2020/11/23
- Phantom: ELI V8.0 (20deg probe tilt); Type: QD OVA 004 AA; Serial: 2055
- Measurement SW: DASY52, Version 52.10 (4); SEMCAD X Version 14.6.14 (7501)

**Pin=250mW/Area Scan (61x61x1):** Interpolated grid: dx=1.500 mm, dy=1.500 mm

Maximum value of SAR (interpolated) = 12.0 W/kg

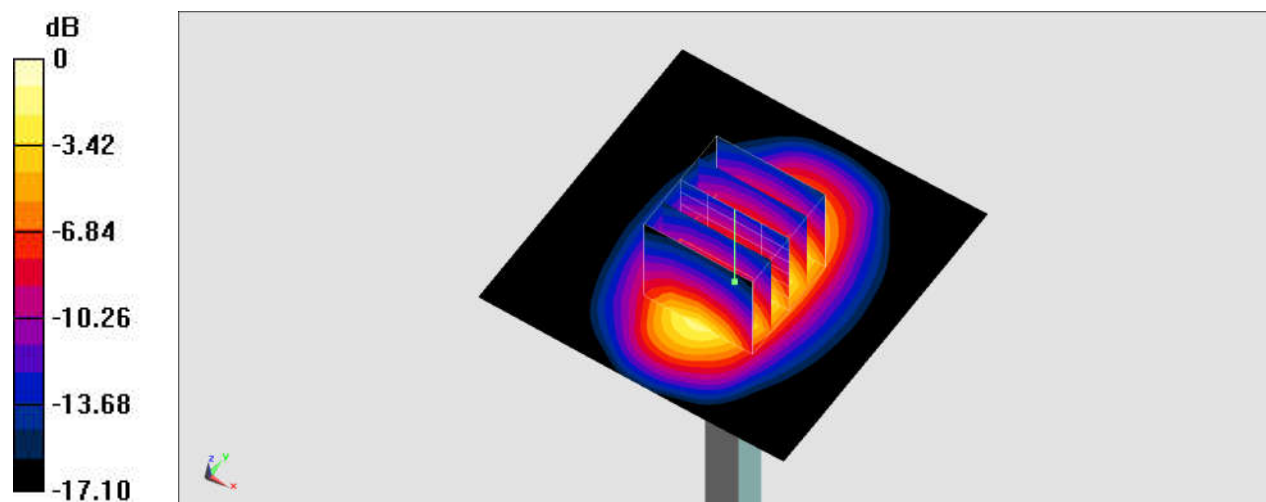
**Pin=250mW/Zoom Scan (5x5x7)/Cube 0:** Measurement grid: dx=8mm, dy=8mm, dz=5mm

Reference Value = 86.42 V/m; Power Drift = -0.11 dB

Peak SAR (extrapolated) = 15.9 W/kg

**SAR(1 g) = 9.06 W/kg; SAR(10 g) = 4.9 W/kg**

Maximum value of SAR (measured) = 11.3 W/kg



0 dB = 11.3 W/kg = 10.53 dBW/kg

## System Check\_Head\_1750MHz

### DUT: D1750V2-1112

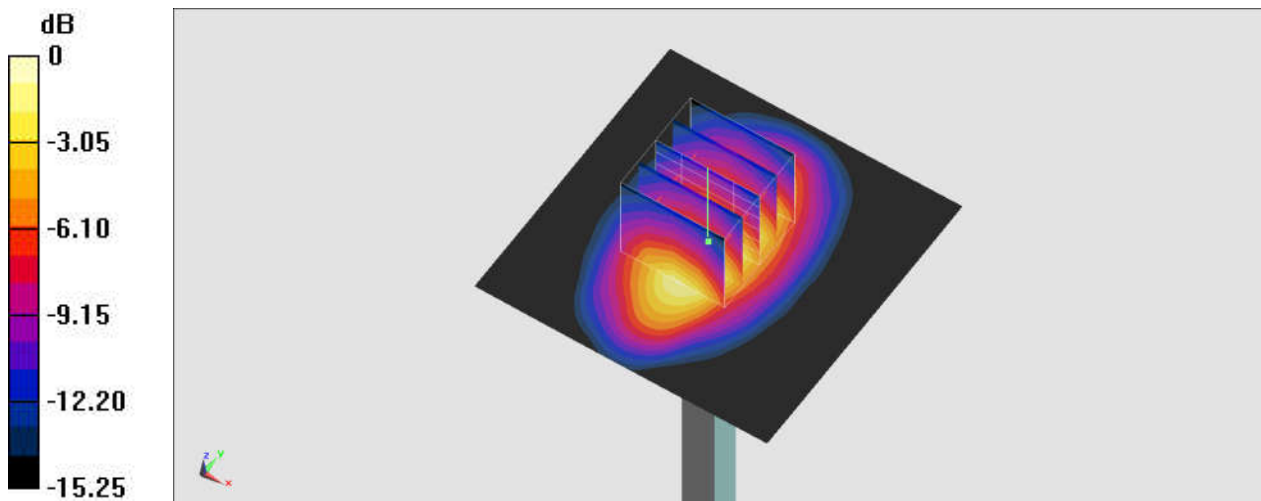
Communication System: CW; Frequency: 1750 MHz; Duty Cycle: 1:1  
Medium: HSL\_1750\_211021 Medium parameters used:  $f = 1750$  MHz;  $\sigma = 1.357$  S/m;  $\epsilon_r = 41.059$ ;  
 $\rho = 1000$  kg/m<sup>3</sup>  
Ambient Temperature : 23.5 °C ; Liquid Temperature : 22.5 °C

### DASY5 Configuration:

- Probe: EX3DV4 - SN7439; ConvF(8.55, 8.55, 8.55) @ 1750 MHz; Calibrated: 2021/2/23
- Sensor-Surface: 1.4mm (Mechanical Surface Detection)
- Electronics: DAE4 Sn376; Calibrated: 2020/11/23
- Phantom: ELI V8.0 (20deg probe tilt); Type: QD OVA 004 AA; Serial: 2055
- Measurement SW: DASY52, Version 52.10 (4); SEMCAD X Version 14.6.14 (7501)

**Pin=250mW/Area Scan (61x61x1):** Interpolated grid: dx=1.500 mm, dy=1.500 mm  
Maximum value of SAR (interpolated) = 12.1 W/kg

**Pin=250mW/Zoom Scan (5x5x7)/Cube 0:** Measurement grid: dx=8mm, dy=8mm, dz=5mm  
Reference Value = 95.77 V/m; Power Drift = -0.01 dB  
Peak SAR (extrapolated) = 13.6 W/kg  
**SAR(1 g) = 8.45 W/kg; SAR(10 g) = 4.76 W/kg**  
Maximum value of SAR (measured) = 11.7 W/kg



0 dB = 11.7 W/kg = 10.68 dBW/kg



## System Check\_Head\_1750MHz

### DUT: D1750V2-1112

Communication System: CW; Frequency: 1750 MHz; Duty Cycle: 1:1

Medium: HSL\_1750\_211028 Medium parameters used:  $f = 1750$  MHz;  $\sigma = 1.354$  S/m;  $\epsilon_r = 39.66$ ;  $\rho = 1000$  kg/m<sup>3</sup>

Ambient Temperature : 23.2 °C ; Liquid Temperature : 22.2 °C

#### DASY5 Configuration:

- Probe: EX3DV4 - SN3898; ConvF(8.51, 8.51, 8.51) @ 1750 MHz; Calibrated: 2021/6/24
- Sensor-Surface: 1.4mm (Mechanical Surface Detection)
- Electronics: DAE4 Sn1647; Calibrated: 2021/1/7
- Phantom: ELI v4.0\_Right; Type: QDOVA001BB; Serial: TP:1025
- Measurement SW: DASY52, Version 52.10 (4); SEMCAD X Version 14.6.14 (7501)

**Pin=50mW/Area Scan (61x61x1):** Interpolated grid: dx=1.500 mm, dy=1.500 mm

Maximum value of SAR (interpolated) = 2.86 W/kg

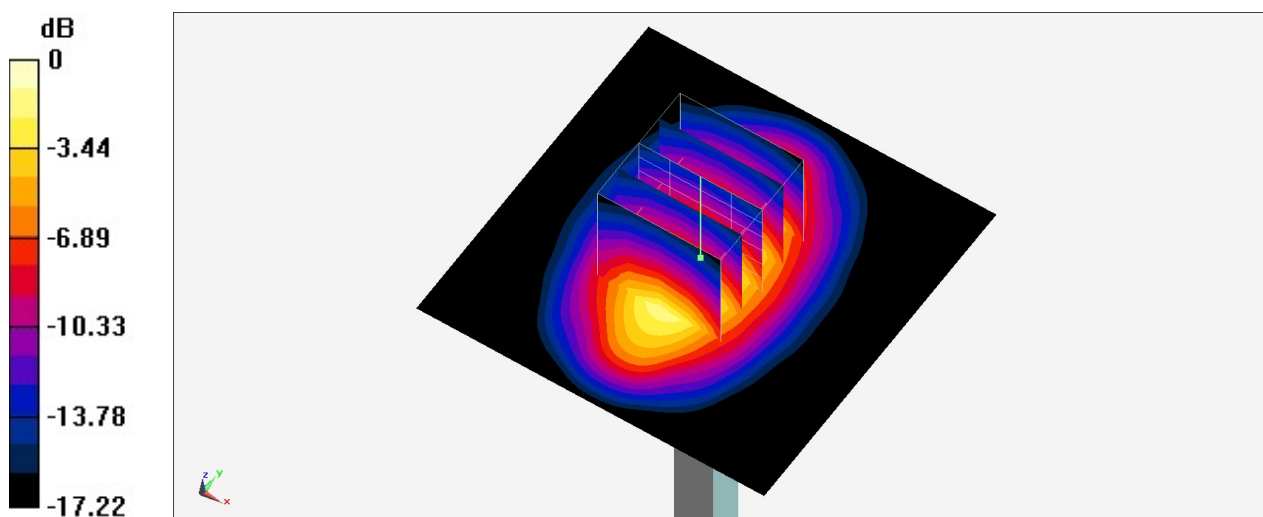
**Pin=50mW/Zoom Scan (5x5x7)/Cube 0:** Measurement grid: dx=8mm, dy=8mm, dz=5mm

Reference Value = 47.24 V/m; Power Drift = -0.08 dB

Peak SAR (extrapolated) = 3.42 W/kg

**SAR(1 g) = 1.82 W/kg; SAR(10 g) = 0.959 W/kg**

Maximum value of SAR (measured) = 2.84 W/kg



0 dB = 2.84 W/kg = 4.53 dBW/kg



## System Check\_Head\_1750MHz

### DUT: D1750V2-1112

Communication System: CW; Frequency: 1750 MHz; Duty Cycle: 1:1

Medium: HSL\_1750\_211125 Medium parameters used:  $f = 1750$  MHz;  $\sigma = 1.349$  S/m;  $\epsilon_r = 40.485$ ;  
 $\rho = 1000$  kg/m<sup>3</sup>

Ambient Temperature : 23.2 °C ; Liquid Temperature : 22.2 °C

#### DASY5 Configuration:

- Probe: EX3DV4 - SN3931; ConvF(8.6, 8.6, 8.6) @ 1750 MHz; Calibrated: 2021/10/21
- Sensor-Surface: 1.4mm (Mechanical Surface Detection)
- Electronics: DAE4 Sn699; Calibrated: 2021/2/16
- Phantom: ELI V8.0 (20deg probe tilt); Type: QD OVA 004 AA; Serial: 2055
- Measurement SW: DASY52, Version 52.10 (4); SEMCAD X Version 14.6.14 (7501)

**Pin=50mW/Area Scan (61x61x1):** Interpolated grid: dx=1.500 mm, dy=1.500 mm  
 Maximum value of SAR (interpolated) = 2.79 W/kg

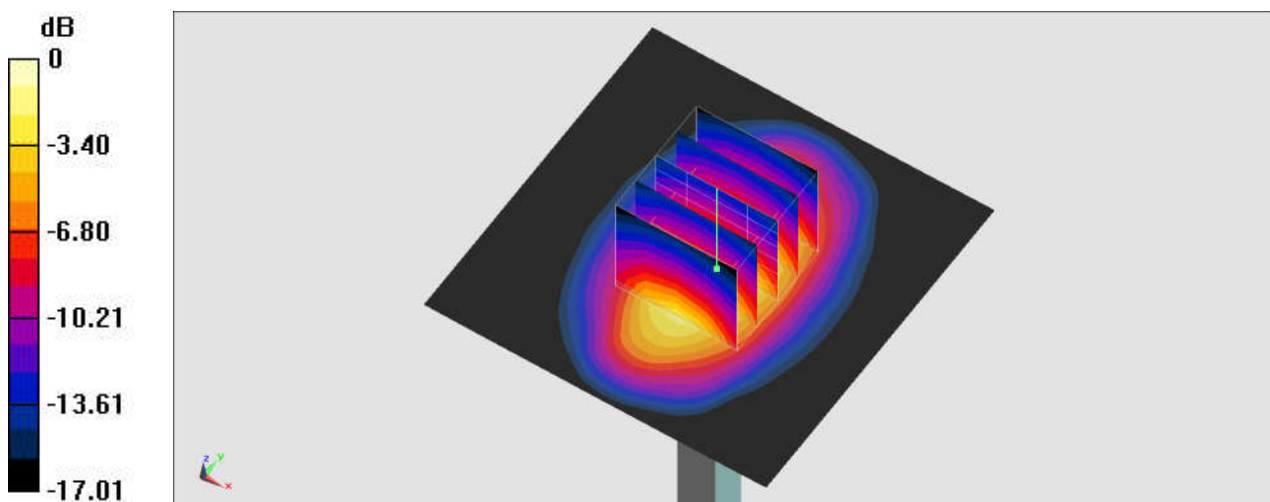
**Pin=50mW/Zoom Scan (5x5x7)/Cube 0:** Measurement grid: dx=8mm, dy=8mm, dz=5mm

Reference Value = 46.33 V/m; Power Drift = -0.04 dB

Peak SAR (extrapolated) = 3.27 W/kg

**SAR(1 g) = 1.82 W/kg; SAR(10 g) = 0.969 W/kg**

Maximum value of SAR (measured) = 2.78 W/kg



0 dB = 2.78 W/kg = 4.44 dBW/kg

## System Check\_Head\_1750MHz

### DUT: D1750V2-1112

Communication System: CW; Frequency: 1750 MHz; Duty Cycle: 1:1

Medium: HSL\_1750\_211219 Medium parameters used:  $f = 1750$  MHz;  $\sigma = 1.362$  S/m;  $\epsilon_r = 40.239$ ;  $\rho = 1000$  kg/m<sup>3</sup>

Ambient Temperature : 23.5 °C ; Liquid Temperature : 22.5 °C

DASY5 Configuration:

- Probe: EX3DV4 - SN3578; ConvF(8.09, 8.09, 8.09) @ 1750 MHz; Calibrated: 2021/6/23
- Sensor-Surface: 1.4mm (Mechanical Surface Detection)
- Electronics: DAE3 Sn528; Calibrated: 2021/7/26
- Phantom: ELI v5.0\_Left; Type: QDOVA002AA; Serial: TP:1191
- Measurement SW: DASY52, Version 52.10 (4); SEMCAD X Version 14.6.14 (7483)

**Pin=50mW/Area Scan (61x61x1):** Interpolated grid: dx=1.500 mm, dy=1.500 mm

Maximum value of SAR (interpolated) = 2.80 W/kg

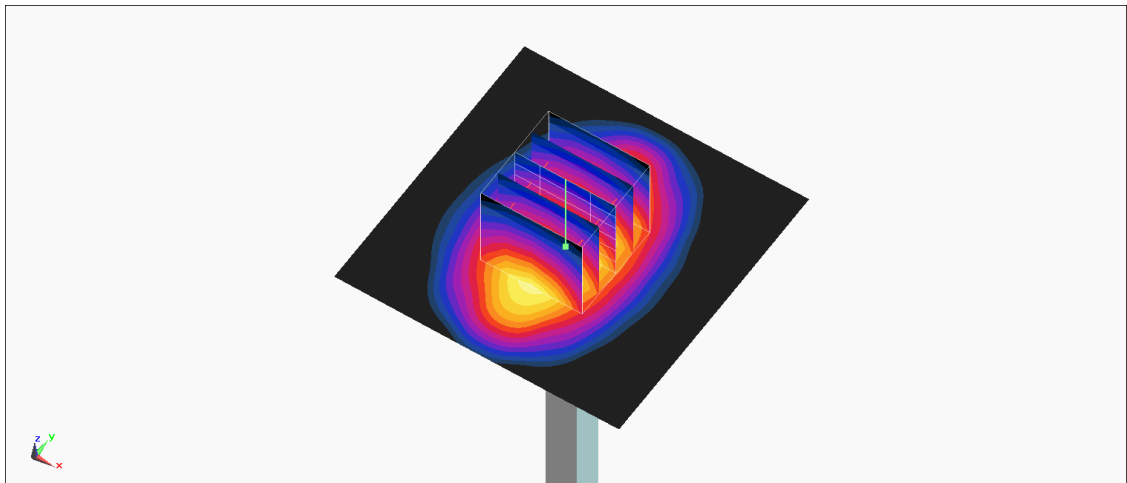
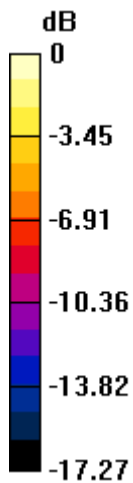
**Pin=50mW/Zoom Scan (5x5x7)/Cube 0:** Measurement grid: dx=8mm, dy=8mm, dz=5mm

Reference Value = 46.86 V/m; Power Drift = -0.08 dB

Peak SAR (extrapolated) = 3.27 W/kg

**SAR(1 g) = 1.77 W/kg; SAR(10 g) = 0.937 W/kg**

Maximum value of SAR (measured) = 2.76 W/kg



0 dB = 2.76 W/kg = 4.41 dBW/kg

## System Check\_Head\_1900MHz

### DUT: D1900V2-5d185

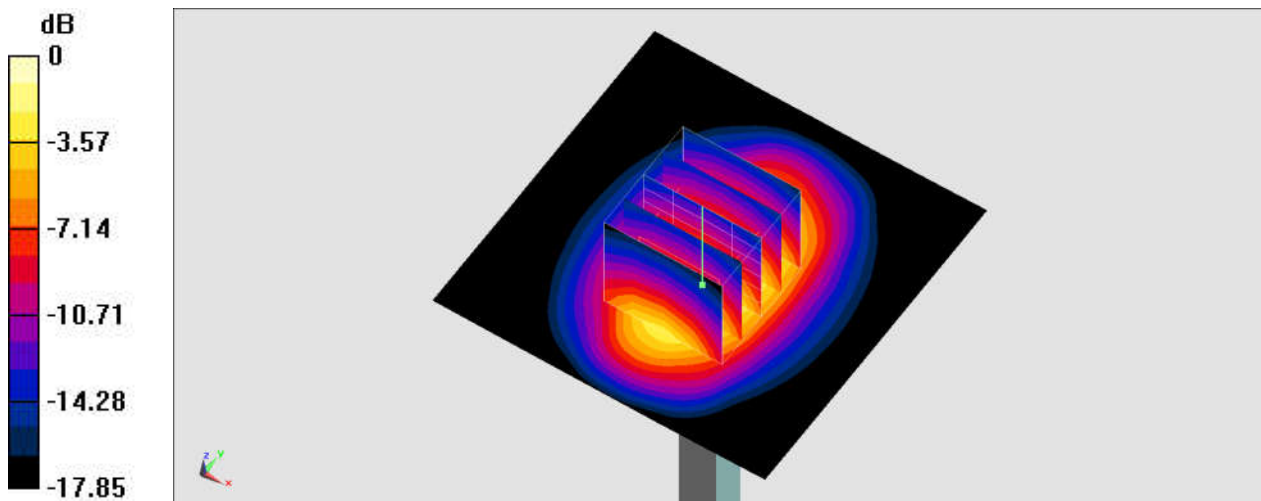
Communication System: CW; Frequency: 1900 MHz; Duty Cycle: 1:1  
Medium: HSL\_1900\_211018 Medium parameters used:  $f = 1900 \text{ MHz}$ ;  $\sigma = 1.449 \text{ S/m}$ ;  $\epsilon_r = 39.352$ ;  
 $\rho = 1000 \text{ kg/m}^3$   
Ambient Temperature :  $23.5 \text{ }^\circ\text{C}$ ; Liquid Temperature :  $22.5 \text{ }^\circ\text{C}$

#### DASY5 Configuration:

- Probe: ES3DV3 - SN3184; ConvF(5.22, 5.22, 5.22) @ 1900 MHz; Calibrated: 2021/9/23
- Sensor-Surface: 3mm (Mechanical Surface Detection)
- Electronics: DAE4 Sn376; Calibrated: 2020/11/23
- Phantom: ELI V8.0 (20deg probe tilt); Type: QD OVA 004 AA; Serial: 2055
- Measurement SW: DASY52, Version 52.10 (4); SEMCAD X Version 14.6.14 (7501)

**Pin=250mW/Area Scan (61x61x1):** Interpolated grid:  $dx=1.500 \text{ mm}$ ,  $dy=1.500 \text{ mm}$   
Maximum value of SAR (interpolated) =  $13.5 \text{ W/kg}$

**Pin=250mW/Zoom Scan (5x5x7)/Cube 0:** Measurement grid:  $dx=8\text{mm}$ ,  $dy=8\text{mm}$ ,  $dz=5\text{mm}$   
Reference Value =  $93.59 \text{ V/m}$ ; Power Drift =  $-0.18 \text{ dB}$   
Peak SAR (extrapolated) =  $17.7 \text{ W/kg}$   
**SAR(1 g) =  $9.87 \text{ W/kg}$ ; SAR(10 g) =  $5.25 \text{ W/kg}$**   
Maximum value of SAR (measured) =  $12.3 \text{ W/kg}$



0 dB =  $12.3 \text{ W/kg}$  =  $10.90 \text{ dBW/kg}$

## System Check\_Head\_1900MHz

### DUT: D1900V2-5d041

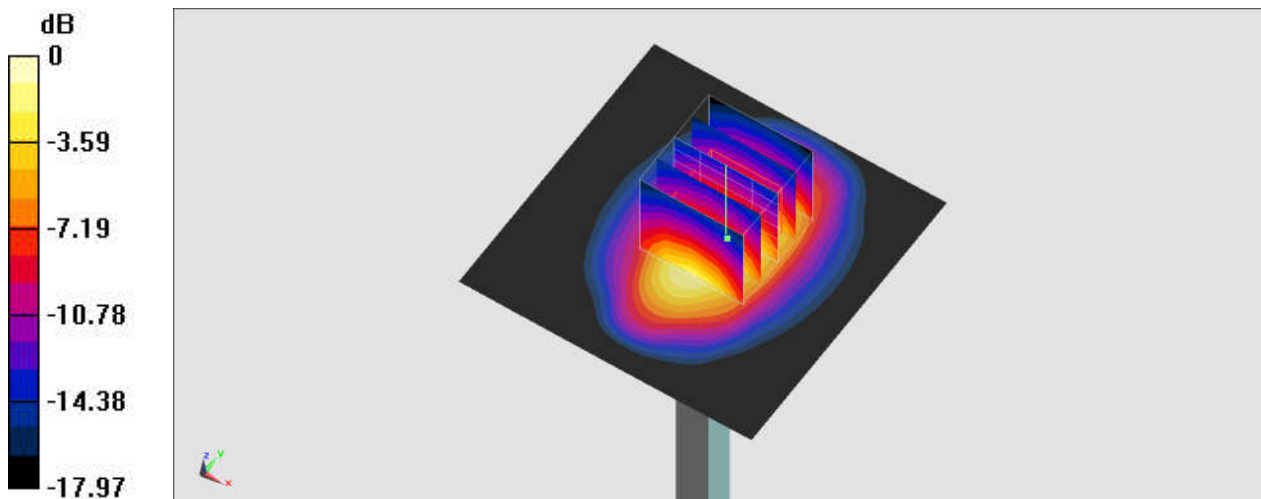
Communication System: CW; Frequency: 1900 MHz; Duty Cycle: 1:1  
Medium: HSL\_1900\_211021 Medium parameters used:  $f = 1900$  MHz;  $\sigma = 1.433$  S/m;  $\epsilon_r = 39.511$ ;  
 $\rho = 1000$  kg/m<sup>3</sup>  
Ambient Temperature : 23.5 °C ; Liquid Temperature : 22.5 °C

#### DASY5 Configuration:

- Probe: EX3DV4 - SN7439; ConvF(8.24, 8.24, 8.24) @ 1900 MHz; Calibrated: 2021/2/23
- Sensor-Surface: 1.4mm (Mechanical Surface Detection)
- Electronics: DAE4 Sn376; Calibrated: 2020/11/23
- Phantom: ELI V8.0 (20deg probe tilt); Type: QD OVA 004 AA; Serial: 2055
- Measurement SW: DASY52, Version 52.10 (4); SEMCAD X Version 14.6.14 (7501)

**Pin=50mW/Area Scan (61x61x1):** Interpolated grid: dx=1.500 mm, dy=1.500 mm  
Maximum value of SAR (interpolated) = 3.02 W/kg

**Pin=50mW/Zoom Scan (5x5x7)/Cube 0:** Measurement grid: dx=8mm, dy=8mm, dz=5mm  
Reference Value = 44.76 V/m; Power Drift = -0.05 dB  
Peak SAR (extrapolated) = 3.68 W/kg  
**SAR(1 g) = 2 W/kg; SAR(10 g) = 1.05 W/kg**  
Maximum value of SAR (measured) = 3.06 W/kg



0 dB = 3.06 W/kg = 4.86 dBW/kg

## System Check\_Head\_1900MHz

### DUT: D1900V2-5d041

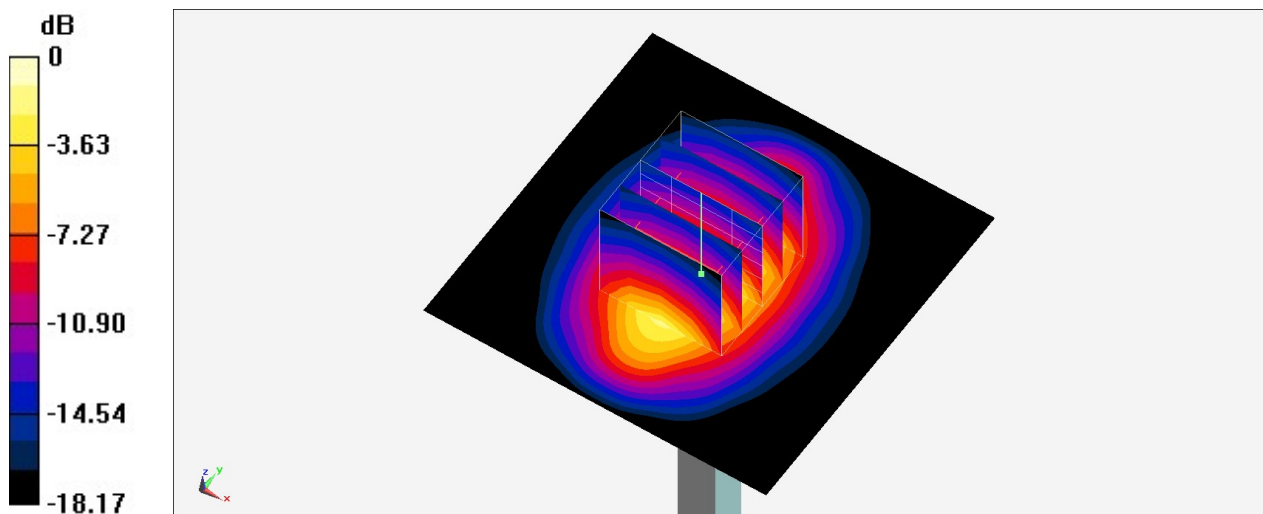
Communication System: CW; Frequency: 1900 MHz; Duty Cycle: 1:1  
Medium: HSL\_1900\_211028 Medium parameters used:  $f = 1900$  MHz;  $\sigma = 1.448$  S/m;  $\epsilon_r = 38.297$ ;  
 $\rho = 1000$  kg/m<sup>3</sup>  
Ambient Temperature : 23.2 °C ; Liquid Temperature : 22.2 °C

### DASY5 Configuration:

- Probe: EX3DV4 - SN3898; ConvF(8.3, 8.3, 8.3) @ 1900 MHz; Calibrated: 2021/6/24
- Sensor-Surface: 1.4mm (Mechanical Surface Detection)
- Electronics: DAE4 Sn1647; Calibrated: 2021/1/7
- Phantom: ELI v4.0\_Right; Type: QDOVA001BB; Serial: TP:1025
- Measurement SW: DASY52, Version 52.10 (4); SEMCAD X Version 14.6.14 (7501)

**Pin=50mW/Area Scan (61x61x1):** Interpolated grid: dx=1.500 mm, dy=1.500 mm  
Maximum value of SAR (interpolated) = 3.23 W/kg

**Pin=50mW/Zoom Scan (5x5x7)/Cube 0:** Measurement grid: dx=8mm, dy=8mm, dz=5mm  
Reference Value = 48.58 V/m; Power Drift = -0.05 dB  
Peak SAR (extrapolated) = 3.92 W/kg  
**SAR(1 g) = 2.03 W/kg; SAR(10 g) = 1.05 W/kg**  
Maximum value of SAR (measured) = 3.23 W/kg



0 dB = 3.23 W/kg = 5.09 dBW/kg

## System Check\_Head\_1900MHz

### DUT: D1900V2-5d041

Communication System: CW; Frequency: 1900 MHz; Duty Cycle: 1:1

Medium: HSL\_1900\_211219 Medium parameters used:  $f = 1900$  MHz;  $\sigma = 1.439$  S/m;  $\epsilon_r = 38.691$ ;  $\rho = 1000$  kg/m<sup>3</sup>

Ambient Temperature : 23.5 °C ; Liquid Temperature : 22.5 °C

DASY5 Configuration:

- Probe: EX3DV4 - SN3578; ConvF(7.82, 7.82, 7.82) @ 1900 MHz; Calibrated: 2021/6/23
- Sensor-Surface: 1.4mm (Mechanical Surface Detection)
- Electronics: DAE3 Sn528; Calibrated: 2021/7/26
- Phantom: ELI v5.0\_Left; Type: QDOVA002AA; Serial: TP:1191
- Measurement SW: DASY52, Version 52.10 (4); SEMCAD X Version 14.6.14 (7483)

**Pin=50mW/Area Scan (61x61x1):** Interpolated grid: dx=1.500 mm, dy=1.500 mm

Maximum value of SAR (interpolated) = 3.25 W/kg

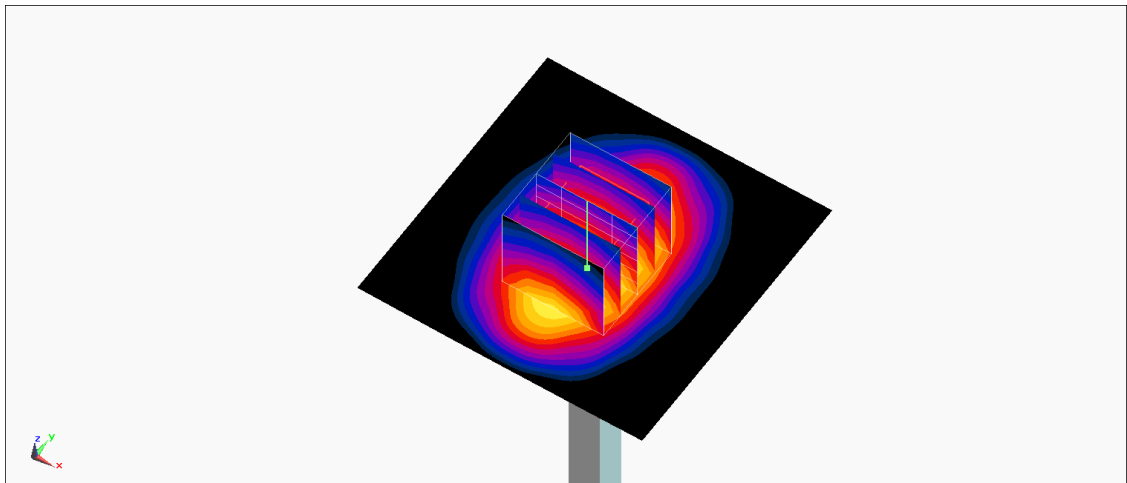
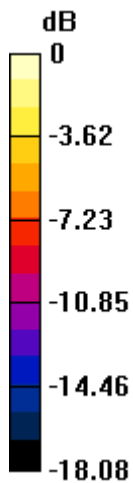
**Pin=50mW/Zoom Scan (5x5x7)/Cube 0:** Measurement grid: dx=8mm, dy=8mm, dz=5mm

Reference Value = 47.90 V/m; Power Drift = -0.15 dB

Peak SAR (extrapolated) = 3.77 W/kg

**SAR(1 g) = 1.99 W/kg; SAR(10 g) = 1.08 W/kg**

Maximum value of SAR (measured) = 3.11 W/kg



0 dB = 3.11 W/kg = 4.93 dBW/kg

## System Check\_Head\_2300MHz

### DUT: D2300V2-1006

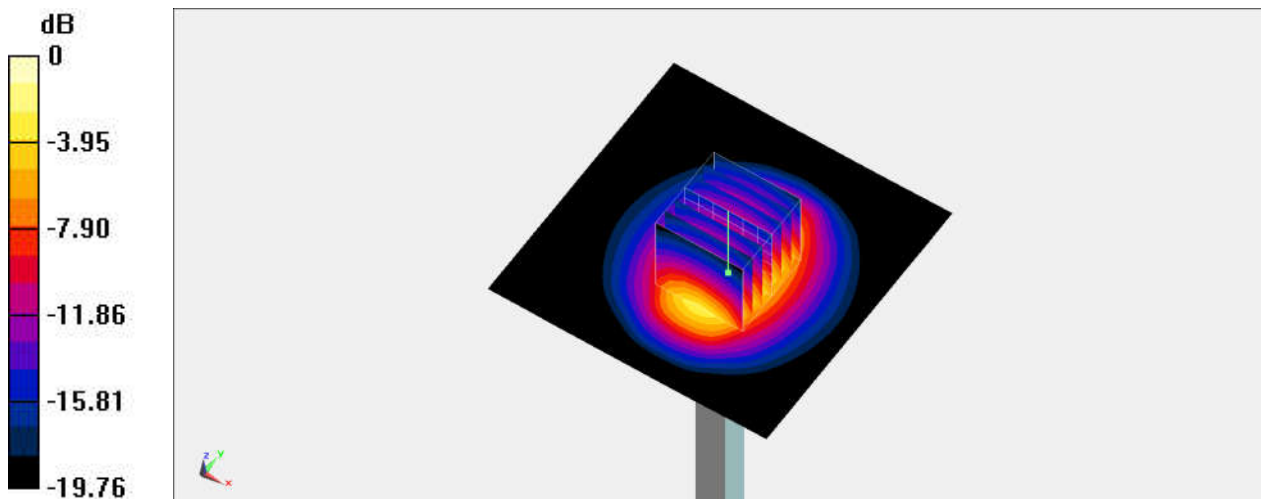
Communication System: CW; Frequency: 2300 MHz; Duty Cycle: 1:1  
Medium: HSL\_2300\_211019 Medium parameters used:  $f = 2300$  MHz;  $\sigma = 1.648$  S/m;  $\epsilon_r = 39.718$ ;  
 $\rho = 1000$  kg/m<sup>3</sup>  
Ambient Temperature : 23.5 °C ; Liquid Temperature : 22.5 °C

### DASY5 Configuration:

- Probe: ES3DV3 - SN3184; ConvF(4.86, 4.86, 4.86) @ 2300 MHz; Calibrated: 2021/9/23
- Sensor-Surface: 3mm (Mechanical Surface Detection)
- Electronics: DAE4 Sn376; Calibrated: 2020/11/23
- Phantom: ELI V8.0 (20deg probe tilt); Type: QD OVA 004 AA; Serial: 2055
- Measurement SW: DASY52, Version 52.10 (4); SEMCAD X Version 14.6.14 (7501)

**Pin=250mW/Area Scan (81x81x1):** Interpolated grid: dx=1.200 mm, dy=1.200 mm  
Maximum value of SAR (interpolated) = 15.3 W/kg

**Pin=250mW/Zoom Scan (7x7x7)/Cube 0:** Measurement grid: dx=5mm, dy=5mm, dz=5mm  
Reference Value = 84.66 V/m; Power Drift = -0.10 dB  
Peak SAR (extrapolated) = 22.2 W/kg  
**SAR(1 g) = 11.8 W/kg; SAR(10 g) = 5.84 W/kg**  
Maximum value of SAR (measured) = 15.2 W/kg



0 dB = 15.2 W/kg = 11.82 dBW/kg



## System Check\_Head\_2300MHz

### DUT: D2300V2-1006

Communication System: CW; Frequency: 2300 MHz; Duty Cycle: 1:1  
Medium: HSL\_2300\_211022 Medium parameters used:  $f = 2300$  MHz;  $\sigma = 1.634$  S/m;  $\epsilon_r = 39.608$ ;  
 $\rho = 1000$  kg/m<sup>3</sup>  
Ambient Temperature : 23.5 °C ; Liquid Temperature : 22.5 °C

### DASY5 Configuration:

- Probe: EX3DV4 - SN7439; ConvF(7.82, 7.82, 7.82) @ 2300 MHz; Calibrated: 2021/2/23
- Sensor-Surface: 1.4mm (Mechanical Surface Detection)
- Electronics: DAE4 Sn376; Calibrated: 2020/11/23
- Phantom: ELI V8.0 (20deg probe tilt); Type: QD OVA 004 AA; Serial: 2055
- Measurement SW: DASY52, Version 52.10 (4); SEMCAD X Version 14.6.14 (7501)

**Pin=250mW/Area Scan (71x71x1):** Interpolated grid: dx=1.200 mm, dy=1.200 mm

Maximum value of SAR (interpolated) = 18.4 W/kg

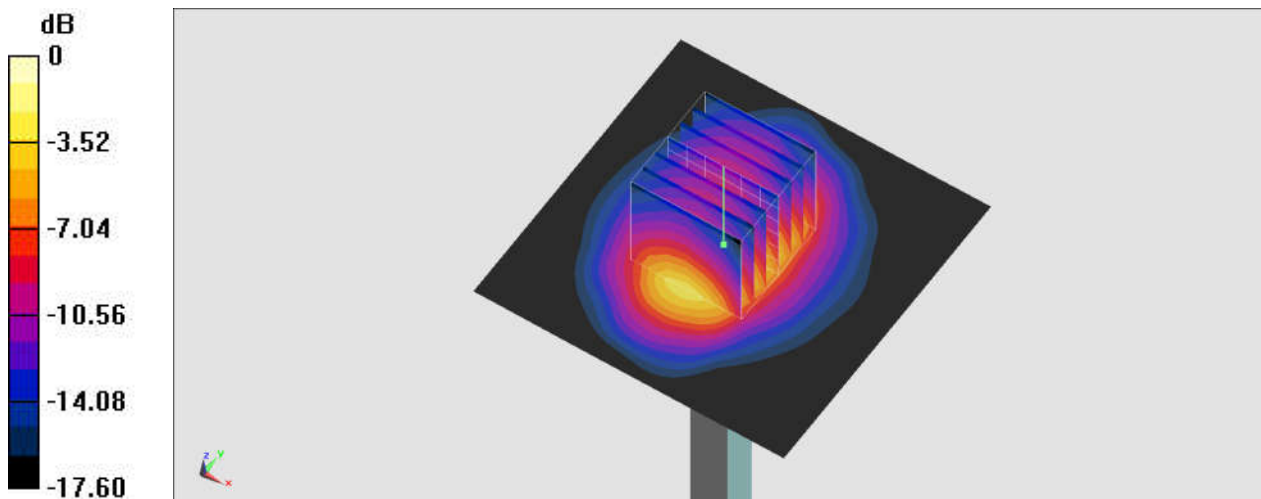
**Pin=250mW/Zoom Scan (7x7x7)/Cube 0:** Measurement grid: dx=5mm, dy=5mm, dz=5mm

Reference Value = 108.6 V/m; Power Drift = -0.04 dB

Peak SAR (extrapolated) = 19.8 W/kg

**SAR(1 g) = 11.6 W/kg; SAR(10 g) = 6.02 W/kg**

Maximum value of SAR (measured) = 17.3 W/kg



0 dB = 17.3 W/kg = 12.38 dBW/kg

## System Check\_Head\_2300MHz

### DUT: D2300V2-1006

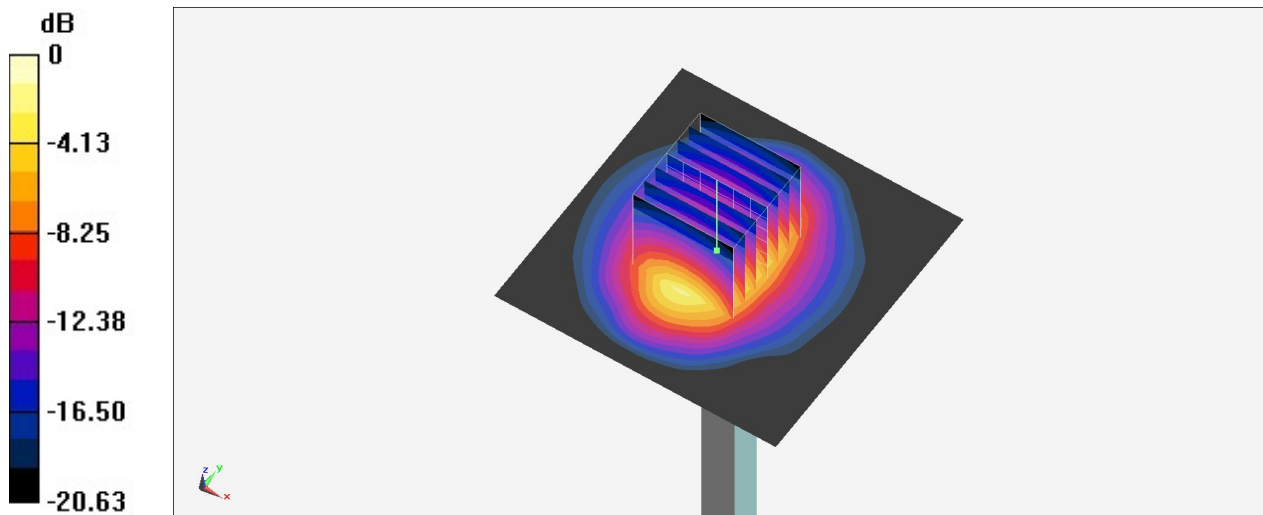
Communication System: CW; Frequency: 2300 MHz; Duty Cycle: 1:1  
Medium: HSL\_2300\_211027 Medium parameters used:  $f = 2300$  MHz;  $\sigma = 1.671$  S/m;  $\epsilon_r = 40.966$ ;  
 $\rho = 1000$  kg/m<sup>3</sup>  
Ambient Temperature : 23.7 °C ; Liquid Temperature : 22.7 °C

### DASY5 Configuration:

- Probe: EX3DV4 - SN3898; ConvF(7.78, 7.78, 7.78) @ 2300 MHz; Calibrated: 2021/6/24
- Sensor-Surface: 1.4mm (Mechanical Surface Detection)
- Electronics: DAE4 Sn1647; Calibrated: 2021/1/7
- Phantom: ELI v4.0\_Right; Type: QDOVA001BB; Serial: TP:1025
- Measurement SW: DASY52, Version 52.10 (4); SEMCAD X Version 14.6.14 (7501)

**Pin=50mW/Area Scan (71x71x1):** Interpolated grid: dx=1.200 mm, dy=1.200 mm  
Maximum value of SAR (interpolated) = 3.98 W/kg

**Pin=50mW/Zoom Scan (7x7x7)/Cube 0:** Measurement grid: dx=5mm, dy=5mm, dz=5mm  
Reference Value = 47.90 V/m; Power Drift = 0.19 dB  
Peak SAR (extrapolated) = 4.79 W/kg  
**SAR(1 g) = 2.43 W/kg; SAR(10 g) = 1.17 W/kg**  
Maximum value of SAR (measured) = 3.95 W/kg



## System Check\_Head\_2300MHz

### DUT: D2300V2-1006

Communication System: CW; Frequency: 2300 MHz; Duty Cycle: 1:1

Medium: HSL\_2300\_211220 Medium parameters used:  $f = 2300$  MHz;  $\sigma = 1.601$  S/m;  $\epsilon_r = 38.953$ ;  $\rho = 1000$  kg/m<sup>3</sup>

Ambient Temperature : 23.5 °C; Liquid Temperature : 22.5 °C

DASY5 Configuration:

- Probe: EX3DV4 - SN3578; ConvF(7.58, 7.58, 7.58) @ 2300 MHz; Calibrated: 2021/6/23
- Sensor-Surface: 1.4mm (Mechanical Surface Detection)
- Electronics: DAE3 Sn528; Calibrated: 2021/7/26
- Phantom: ELI v5.0\_Left; Type: QDOVA002AA; Serial: TP:1191
- Measurement SW: DASY52, Version 52.10 (4); SEMCAD X Version 14.6.14 (7483)

**Pin=50mW/Area Scan (71x71x1):** Interpolated grid: dx=1.200 mm, dy=1.200 mm

Maximum value of SAR (interpolated) = 4.01 W/kg

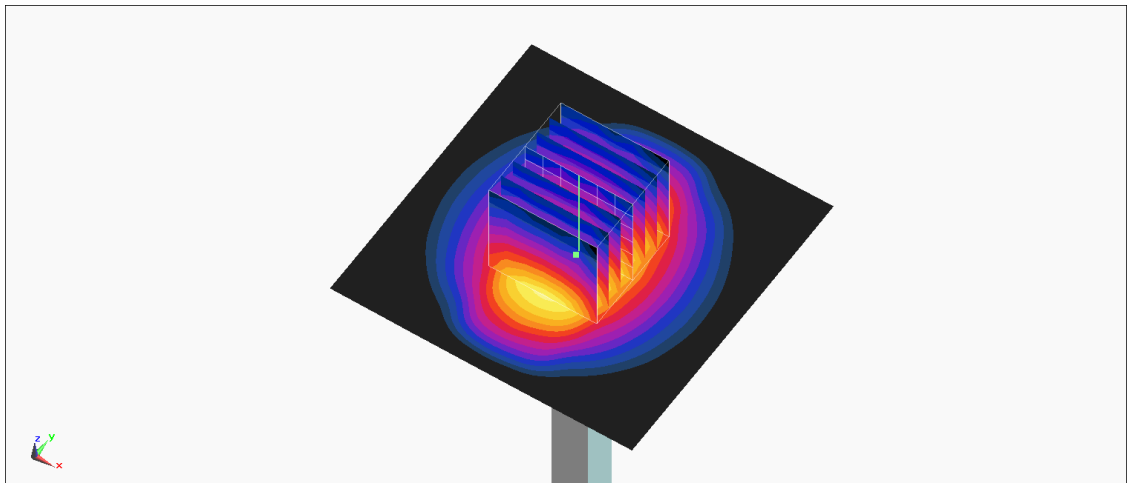
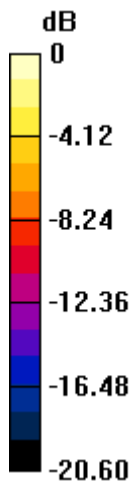
**Pin=50mW/Zoom Scan (7x7x7)/Cube 0:** Measurement grid: dx=5mm, dy=5mm, dz=5mm

Reference Value = 51.07 V/m; Power Drift = -0.13 dB

Peak SAR (extrapolated) = 4.83 W/kg

**SAR(1 g) = 2.29 W/kg; SAR(10 g) = 1.11 W/kg**

Maximum value of SAR (measured) = 3.77 W/kg



0 dB = 3.77 W/kg = 5.76 dBW/kg

## System Check\_Head\_2600MHz

### DUT: D2600V2-1078

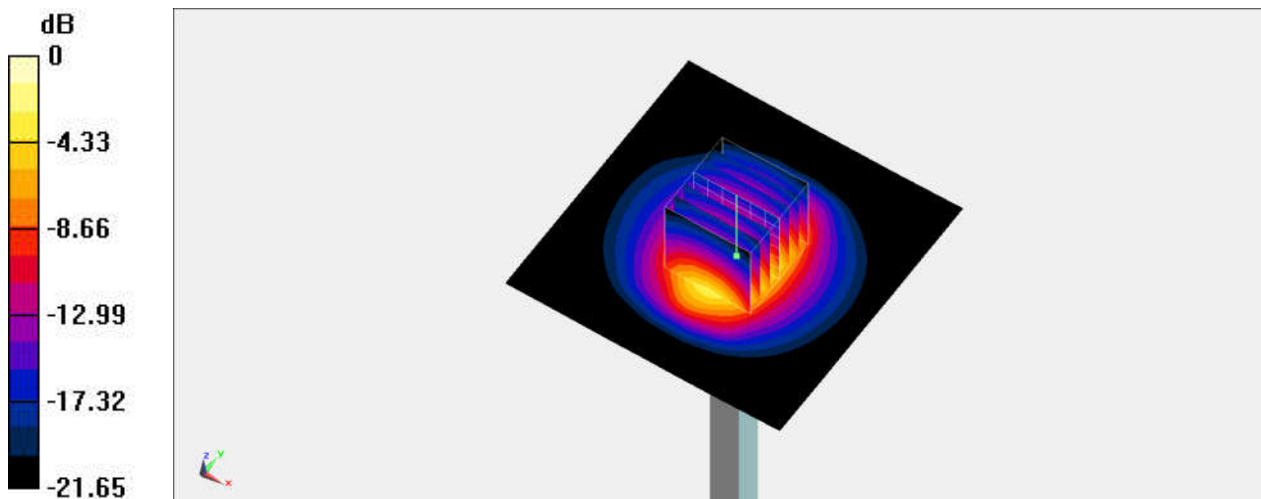
Communication System: CW; Frequency: 2600 MHz; Duty Cycle: 1:1  
Medium: HSL\_2600\_211019 Medium parameters used:  $f = 2600$  MHz;  $\sigma = 1.982$  S/m;  $\epsilon_r = 38.374$ ;  
 $\rho = 1000$  kg/m<sup>3</sup>  
Ambient Temperature : 23.5 °C ; Liquid Temperature : 22.5 °C

#### DASY5 Configuration:

- Probe: ES3DV3 - SN3184; ConvF(4.48, 4.48, 4.48) @ 2600 MHz; Calibrated: 2021/9/23
- Sensor-Surface: 3mm (Mechanical Surface Detection)
- Electronics: DAE4 Sn376; Calibrated: 2020/11/23
- Phantom: ELI V8.0 (20deg probe tilt); Type: QD OVA 004 AA; Serial: 2055
- Measurement SW: DASY52, Version 52.10 (4); SEMCAD X Version 14.6.14 (7501)

**Pin=250mW/Area Scan (81x81x1):** Interpolated grid: dx=1.200 mm, dy=1.200 mm  
Maximum value of SAR (interpolated) = 19.9 W/kg

**Pin=250mW/Zoom Scan (7x7x7)/Cube 0:** Measurement grid: dx=5mm, dy=5mm, dz=5mm  
Reference Value = 100.3 V/m; Power Drift = -0.14 dB  
Peak SAR (extrapolated) = 30.2 W/kg  
**SAR(1 g) = 15 W/kg; SAR(10 g) = 6.96 W/kg**  
Maximum value of SAR (measured) = 19.7 W/kg



0 dB = 19.7 W/kg = 12.94 dBW/kg

## System Check\_Head\_2600MHz

### DUT: D2600V2-1008

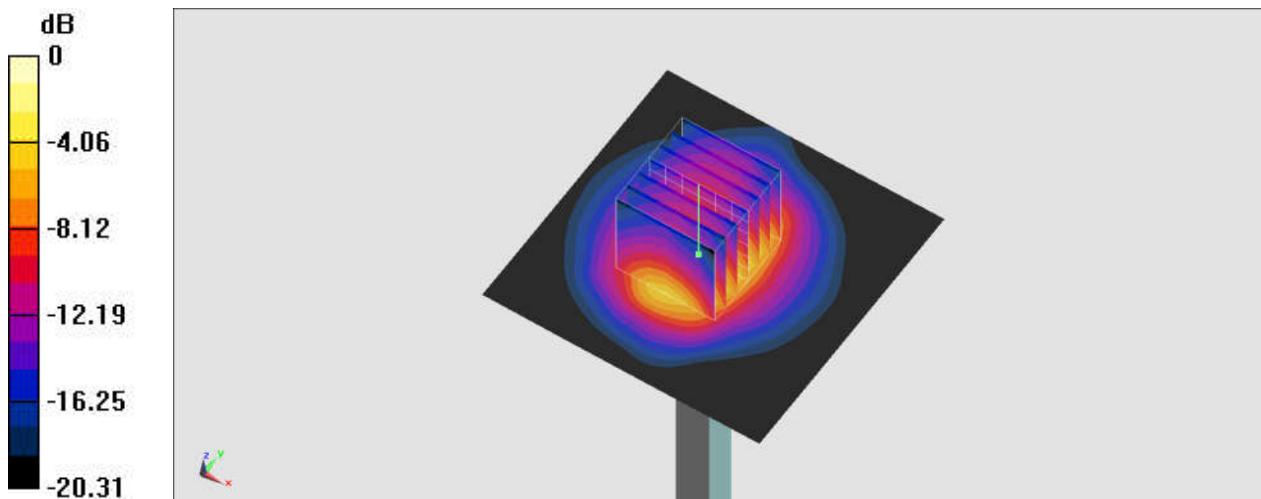
Communication System: CW; Frequency: 2600 MHz; Duty Cycle: 1:1  
Medium: HSL\_2600\_211022 Medium parameters used:  $f = 2600$  MHz;  $\sigma = 1.966$  S/m;  $\epsilon_r = 38.264$ ;  
 $\rho = 1000$  kg/m<sup>3</sup>  
Ambient Temperature : 23.5 °C ; Liquid Temperature : 22.5 °C

#### DASY5 Configuration:

- Probe: EX3DV4 - SN7439; ConvF(7.34, 7.34, 7.34) @ 2600 MHz; Calibrated: 2021/2/23
- Sensor-Surface: 1.4mm (Mechanical Surface Detection)
- Electronics: DAE4 Sn376; Calibrated: 2020/11/23
- Phantom: ELI V8.0 (20deg probe tilt); Type: QD OVA 004 AA; Serial: 2055
- Measurement SW: DASY52, Version 52.10 (4); SEMCAD X Version 14.6.14 (7501)

**Pin=250mW/Area Scan (71x71x1):** Interpolated grid: dx=1.200 mm, dy=1.200 mm  
Maximum value of SAR (interpolated) = 22.5 W/kg

**Pin=250mW/Zoom Scan (7x7x7)/Cube 0:** Measurement grid: dx=5mm, dy=5mm, dz=5mm  
Reference Value = 102.4 V/m; Power Drift = 0.17 dB  
Peak SAR (extrapolated) = 25.6 W/kg  
**SAR(1 g) = 14 W/kg; SAR(10 g) = 6.81 W/kg**  
Maximum value of SAR (measured) = 21.7 W/kg



0 dB = 21.7 W/kg = 13.36 dBW/kg

## System Check\_Head\_2600MHz

### DUT: D2600V2-1078

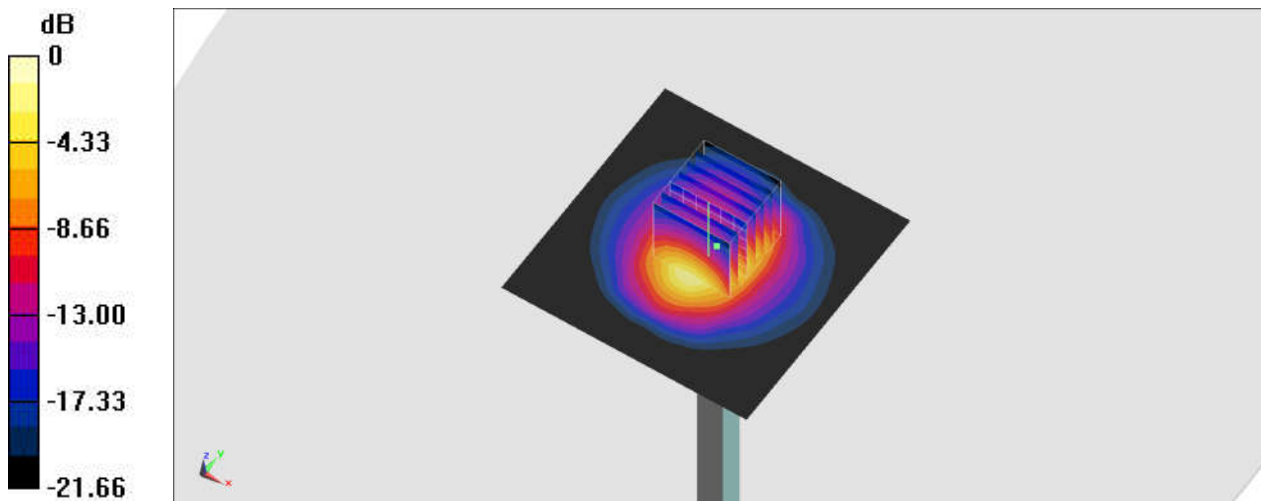
Communication System: CW; Frequency: 2600 MHz; Duty Cycle: 1:1  
Medium: HSL\_2600\_211024 Medium parameters used:  $f = 2600$  MHz;  $\sigma = 1.926$  S/m;  $\epsilon_r = 38.353$ ;  
 $\rho = 1000$  kg/m<sup>3</sup>  
Ambient Temperature : 23.4 °C ; Liquid Temperature : 22.4 °C

#### DASY5 Configuration:

- Probe: ES3DV3 - SN3184; ConvF(4.48, 4.48, 4.48) @ 2600 MHz; Calibrated: 2021/9/23
- Sensor-Surface: 3mm (Mechanical Surface Detection)
- Electronics: DAE4 Sn376; Calibrated: 2020/11/23
- Phantom: ELI V8.0 (20deg probe tilt); Type: QD OVA 004 AA; Serial: 2055
- Measurement SW: DASY52, Version 52.10 (4); SEMCAD X Version 14.6.14 (7501)

**Pin=250mW/Area Scan (81x81x1):** Interpolated grid: dx=1.200 mm, dy=1.200 mm  
Maximum value of SAR (interpolated) = 17.5 W/kg

**Pin=250mW/Zoom Scan (7x7x7)/Cube 0:** Measurement grid: dx=5mm, dy=5mm, dz=5mm  
Reference Value = 96.99 V/m; Power Drift = -0.18 dB  
Peak SAR (extrapolated) = 22.8 W/kg  
**SAR(1 g) = 13 W/kg; SAR(10 g) = 6.19 W/kg**  
Maximum value of SAR (measured) = 16.8 W/kg



0 dB = 16.8 W/kg = 12.25 dBW/kg

## System Check\_Head\_2600MHz

### DUT: D2600V2-1008

Communication System: CW; Frequency: 2600 MHz; Duty Cycle: 1:1

Medium: HSL\_2600\_211125 Medium parameters used:  $f = 2600$  MHz;  $\sigma = 1.983$  S/m;  $\epsilon_r = 38.59$ ;  $\rho = 1000$  kg/m<sup>3</sup>

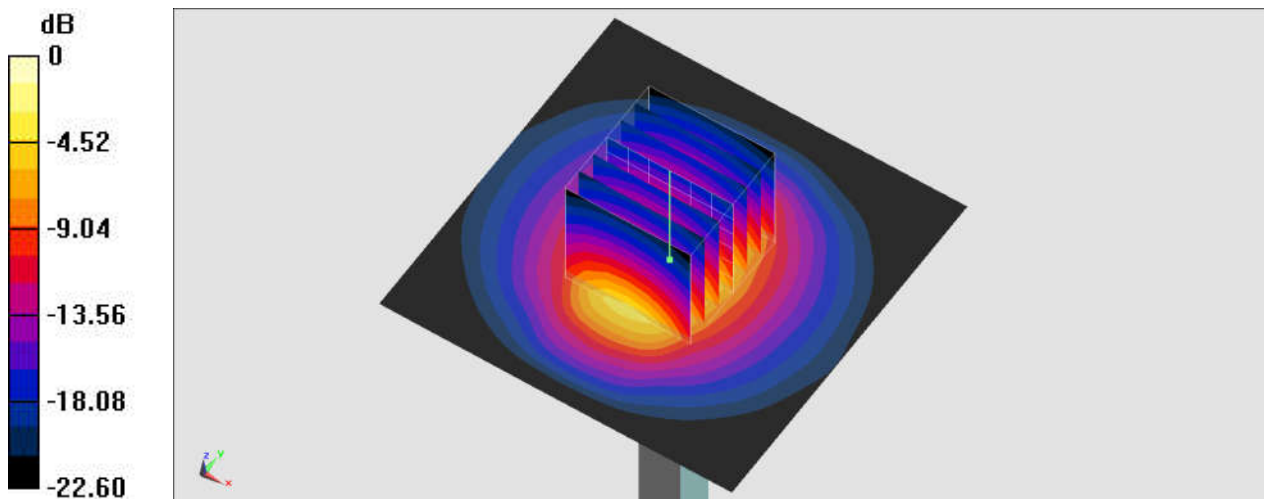
Ambient Temperature : 23.2 °C; Liquid Temperature : 22.2 °C

#### DASY5 Configuration:

- Probe: EX3DV4 - SN3931; ConvF(7.3, 7.3, 7.3) @ 2600 MHz; Calibrated: 2021/10/21
- Sensor-Surface: 1.4mm (Mechanical Surface Detection)
- Electronics: DAE4 Sn699; Calibrated: 2021/2/16
- Phantom: ELI V8.0 (20deg probe tilt); Type: QD OVA 004 AA; Serial: 2055
- Measurement SW: DASY52, Version 52.10 (4); SEMCAD X Version 14.6.14 (7501)

**Pin=50mW/Area Scan (71x71x1):** Interpolated grid: dx=1.200 mm, dy=1.200 mm  
Maximum value of SAR (interpolated) = 4.87 W/kg

**Pin=50mW/Zoom Scan (7x7x7)/Cube 0:** Measurement grid: dx=5mm, dy=5mm, dz=5mm  
Reference Value = 51.53 V/m; Power Drift = -0.02 dB  
Peak SAR (extrapolated) = 5.93 W/kg  
**SAR(1 g) = 2.85 W/kg; SAR(10 g) = 1.29 W/kg**  
Maximum value of SAR (measured) = 4.82 W/kg



0 dB = 4.82 W/kg = 6.83 dBW/kg



## System Check\_Head\_2600MHz

### DUT: D2600V2-1078

Communication System: CW; Frequency: 2600 MHz; Duty Cycle: 1:1

Medium: HSL\_2600\_211221 Medium parameters used:  $f = 2600$  MHz;  $\sigma = 1.945$  S/m;  $\epsilon_r = 37.718$ ;  $\rho = 1000$  kg/m<sup>3</sup>

Ambient Temperature : 23.5 °C ; Liquid Temperature : 22.5 °C

#### DASY5 Configuration:

- Probe: EX3DV4 - SN3578; ConvF(7.22, 7.22, 7.22) @ 2600 MHz; Calibrated: 2021/6/23
- Sensor-Surface: 1.4mm (Mechanical Surface Detection)
- Electronics: DAE3 Sn528; Calibrated: 2021/7/26
- Phantom: ELI v5.0\_Left; Type: QDOVA002AA; Serial: TP:1191
- Measurement SW: DASY52, Version 52.10 (4); SEMCAD X Version 14.6.14 (7483)

**Pin=50mW/Area Scan (71x71x1):** Interpolated grid: dx=1.200 mm, dy=1.200 mm

Maximum value of SAR (interpolated) = 4.62 W/kg

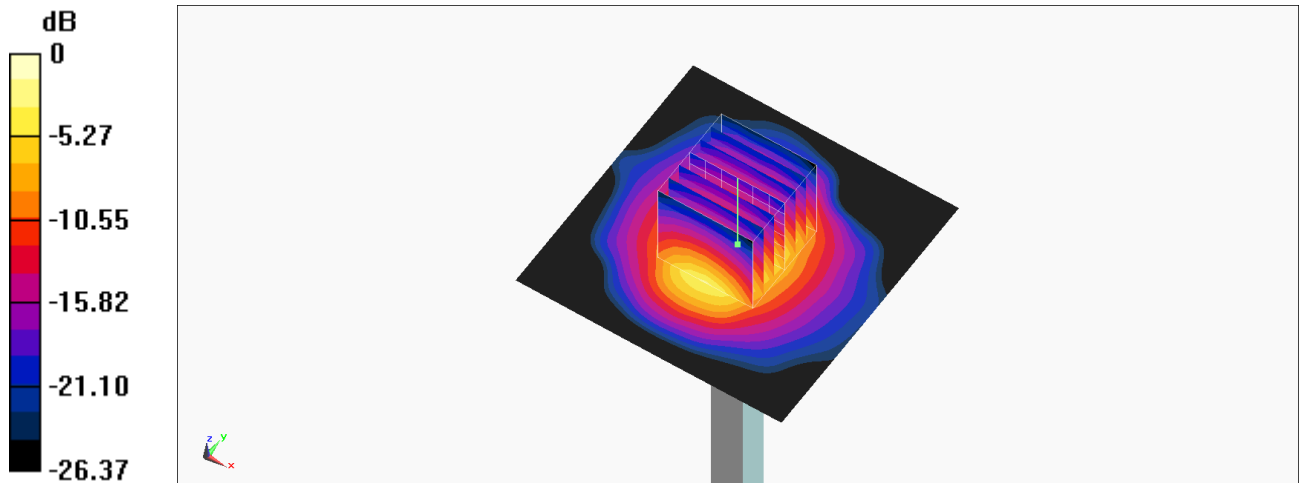
**Pin=50mW/Zoom Scan (7x7x7)/Cube 0:** Measurement grid: dx=5mm, dy=5mm, dz=5mm

Reference Value = 51.78 V/m; Power Drift = -0.04 dB

Peak SAR (extrapolated) = 6.07 W/kg

**SAR(1 g) = 2.79 W/kg; SAR(10 g) = 1.24 W/kg**

Maximum value of SAR (measured) = 4.89 W/kg



0 dB = 4.89 W/kg = 6.89 dBW/kg

## System Check\_Head\_2600MHz

### DUT: D2600V2-1078

Communication System: CW; Frequency: 2600 MHz; Duty Cycle: 1:1

Medium: HSL\_2600\_220110 Medium parameters used:  $f = 2600$  MHz;  $\sigma = 1.934$  S/m;  $\epsilon_r = 37.618$ ;  $\rho = 1000$  kg/m<sup>3</sup>

Ambient Temperature : 23.5 °C ; Liquid Temperature : 22.5 °C

DASY5 Configuration:

- Probe: EX3DV4 - SN3578; ConvF(7.22, 7.22, 7.22) @ 2600 MHz; Calibrated: 2021/6/23
- Sensor-Surface: 1.4mm (Mechanical Surface Detection)
- Electronics: DAE3 Sn528; Calibrated: 2021/7/26
- Phantom: ELI v5.0\_Left; Type: QDOVA002AA; Serial: TP:1191
- Measurement SW: DASY52, Version 52.10 (4); SEMCAD X Version 14.6.14 (7483)

**Pin=50mW/Area Scan (71x71x1):** Interpolated grid: dx=1.200 mm, dy=1.200 mm

Maximum value of SAR (interpolated) = 4.28 W/kg

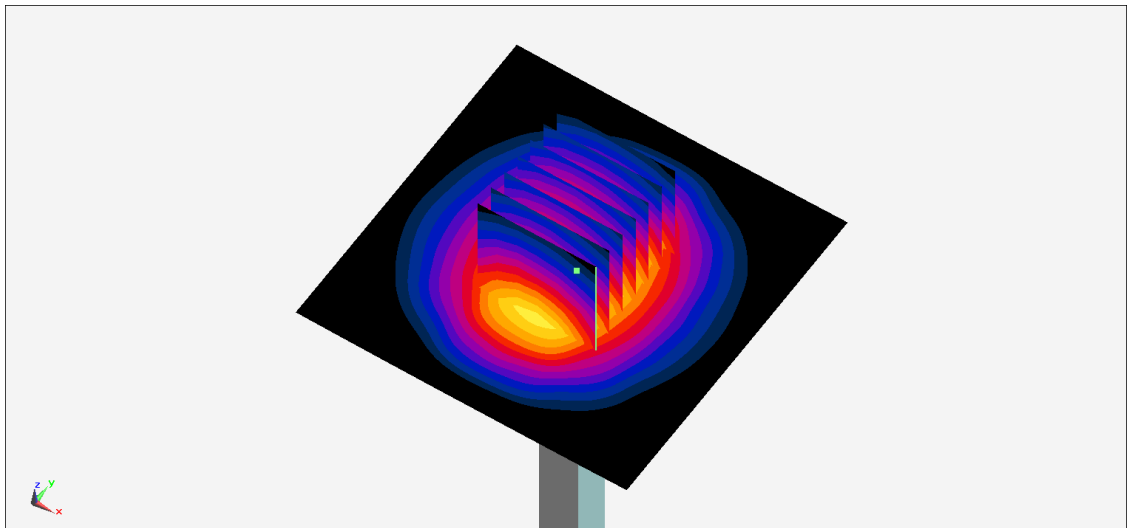
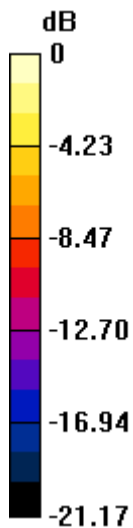
**Pin=50mW/Zoom Scan (7x7x7)/Cube 0:** Measurement grid: dx=5mm, dy=5mm, dz=5mm

Reference Value = 50.64 V/m; Power Drift = -0.12 dB

Peak SAR (extrapolated) = 5.43 W/kg

**SAR(1 g) = 2.77 W/kg; SAR(10 g) = 1.31 W/kg**

Maximum value of SAR (measured) = 4.42 W/kg



0 dB = 4.42 W/kg = 6.45 dBW/kg

## System Check\_Head\_2600MHz

### DUT: D2600V2-1008

Communication System: CW; Frequency: 2600 MHz; Duty Cycle: 1:1

Medium: HSL\_2600\_220315 Medium parameters used:  $f = 2600$  MHz;  $\sigma = 1.947$  S/m;  $\epsilon_r = 38.037$ ;  $\rho = 1000$  kg/m<sup>3</sup>

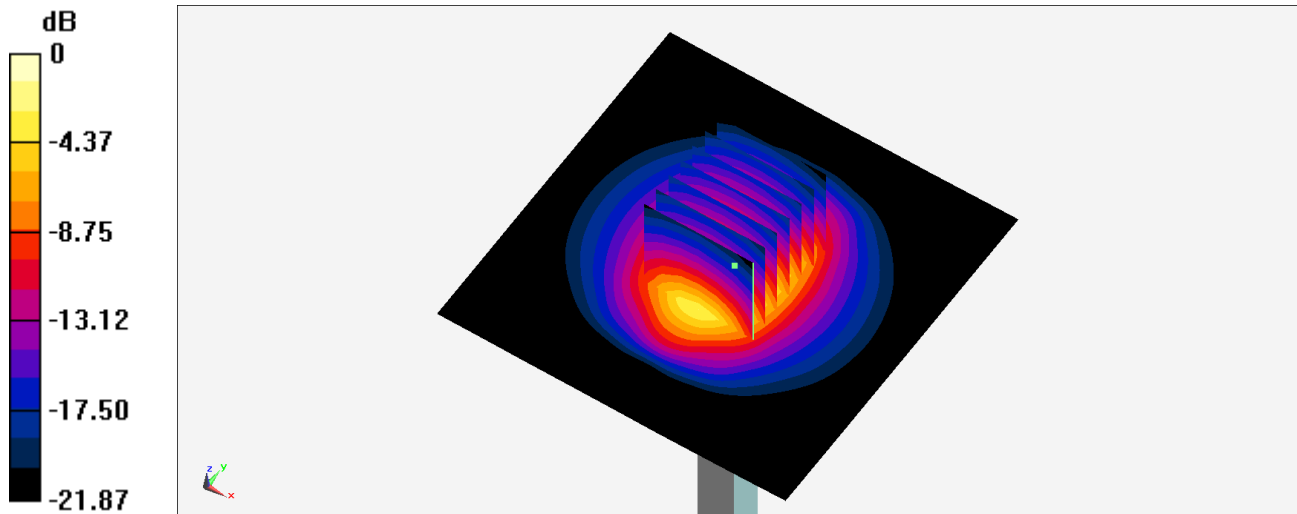
Ambient Temperature : 23.4 °C ; Liquid Temperature : 22.4 °C

DASY5 Configuration:

- Probe: EX3DV4 - SN7625; ConvF(7.56, 7.56, 7.56) @ 2600 MHz; Calibrated: 2022/1/27
- Sensor-Surface: 1.4mm (Mechanical Surface Detection)
- Electronics: DAE4 Sn376; Calibrated: 2021/11/22
- Phantom: ELI v4.0\_Left; Type: QDOVA002AA; Serial: TP:1041
- Measurement SW: DASY52, Version 52.10 (4); SEMCAD X Version 14.6.14 (7483)

**Pin=250mW/Area Scan (81x81x1):** Interpolated grid: dx=1.200 mm, dy=1.200 mm  
Maximum value of SAR (interpolated) = 22.3 W/kg

**Pin=250mW/Zoom Scan (7x7x7)/Cube 0:** Measurement grid: dx=5mm, dy=5mm, dz=5mm  
Reference Value = 111.0 V/m; Power Drift = -0.06 dB  
Peak SAR (extrapolated) = 27.0 W/kg  
**SAR(1 g) = 13.4 W/kg; SAR(10 g) = 6.19 W/kg**  
Maximum value of SAR (measured) = 22.2 W/kg



0 dB = 22.2 W/kg = 13.46 dBW/kg

## System Check\_Head\_3500MHz

### DUT: D3500V2-1014

Communication System: CW; Frequency: 3500 MHz; Duty Cycle: 1:1  
Medium: HSL\_3300-4200\_211023 Medium parameters used:  $f = 3500$  MHz;  $\sigma = 2.979$  S/m;  $\epsilon_r = 37.768$ ;  $\rho = 1000$  kg/m<sup>3</sup>  
Ambient Temperature : 23.5 °C ; Liquid Temperature : 22.5 °C

### DASY5 Configuration:

- Probe: EX3DV4 - SN3898; ConvF(6.82, 6.82, 6.82) @ 3500 MHz; Calibrated: 2021/6/24
- Sensor-Surface: 1.4mm (Mechanical Surface Detection)
- Electronics: DAE4 Sn1647; Calibrated: 2021/1/7
- Phantom: ELI V8.0 (20deg probe tilt); Type: QD OVA 004 AA; Serial: 2055
- Measurement SW: DASY52, Version 52.10 (4); SEMCAD X Version 14.6.14 (7501)

**Pin=50mW/Area Scan (71x71x1):** Interpolated grid: dx=1.200 mm, dy=1.200 mm

Maximum value of SAR (interpolated) = 6.70 W/kg

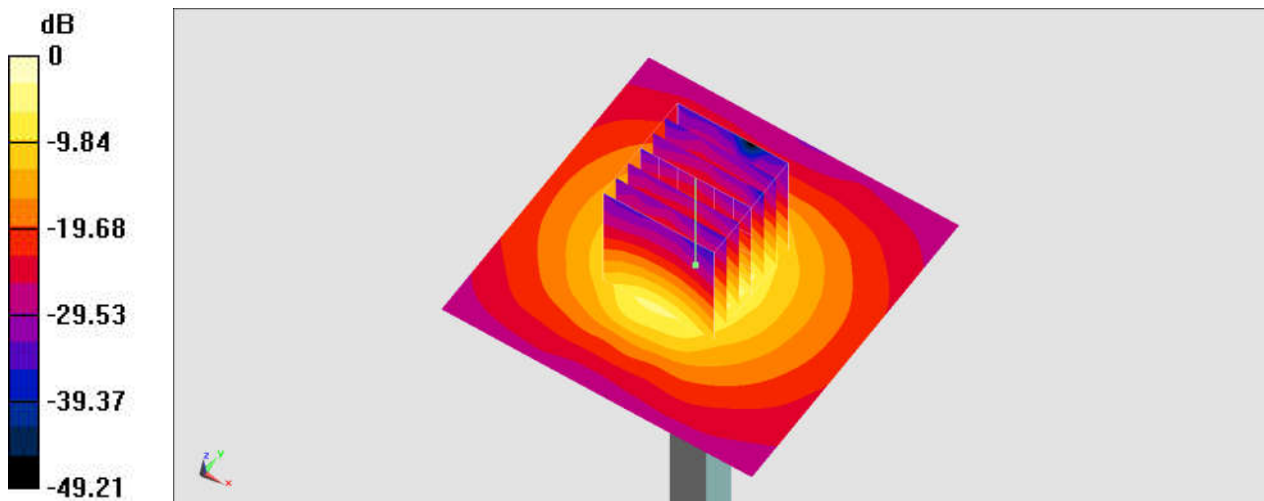
**Pin=50mW/Zoom Scan (7x7x8)/Cube 0:** Measurement grid: dx=5mm, dy=5mm, dz=1.4mm

Reference Value = 49.76 V/m; Power Drift = 0.07 dB

Peak SAR (extrapolated) = 9.32 W/kg

**SAR(1 g) = 3.31 W/kg; SAR(10 g) = 1.23 W/kg**

Maximum value of SAR (measured) = 6.69 W/kg



0 dB = 6.69 W/kg = 8.25 dBW/kg

## System Check\_Head\_3500MHz

### DUT: D3500V2-1014

Communication System: CW; Frequency: 3500 MHz; Duty Cycle: 1:1

Medium: HSL\_3300-4200\_211216 Medium parameters used:  $f = 3500$  MHz;  $\sigma = 2.99$  S/m;  $\epsilon_r = 38.42$ ;  $\rho = 1000$  kg/m<sup>3</sup>

Ambient Temperature : 23.5 °C ; Liquid Temperature : 22.5 °C

#### DASY5 Configuration

- Probe: EX3DV4 - SN3578; ConvF(7.06, 7.06, 7.06) @ 3500 MHz; Calibrated: 2021/6/23
- Sensor-Surface: 1.4mm (Mechanical Surface Detection)
- Electronics: DAE3 Sn528; Calibrated: 2021/7/26
- Phantom: ELI v4.0\_Mid; Type: QDOVA001AA; Serial: TP:1026
- Measurement SW: DASY52, Version 52.10 (4); SEMCAD X Version 14.6.14 (7483)

**Pin=50mW/Area Scan (71x71x1):** Interpolated grid: dx=1.200 mm, dy=1.200 mm

Maximum value of SAR (interpolated) = 7.11 W/kg

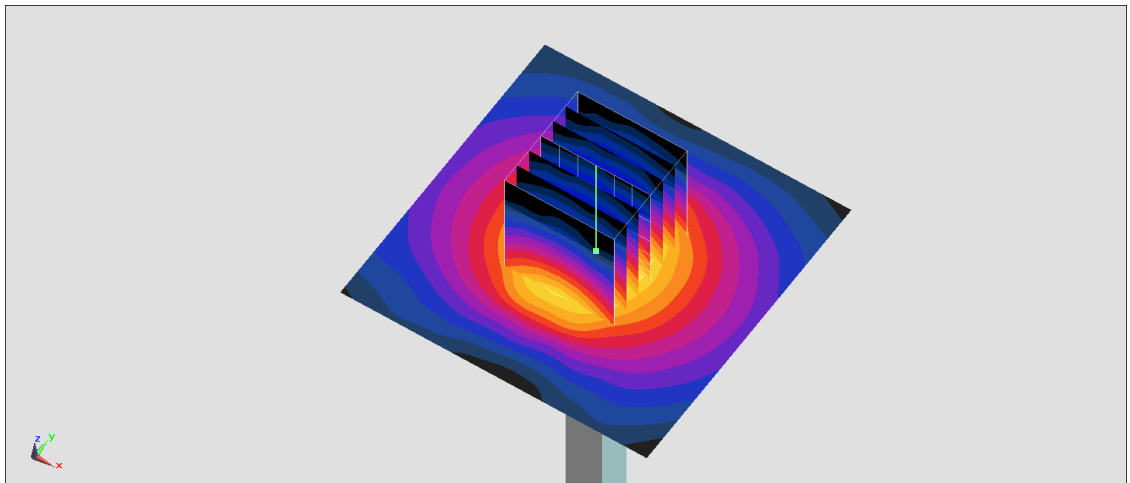
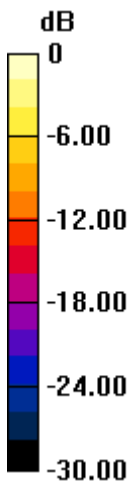
**Pin=50mW/Zoom Scan (7x7x8)/Cube 0:** Measurement grid: dx=5mm, dy=5mm, dz=1.4mm

Reference Value = 52.59 V/m; Power Drift = -0.11 dB

Peak SAR (extrapolated) = 8.89 W/kg

**SAR(1 g) = 3.26 W/kg; SAR(10 g) = 1.22 W/kg**

Maximum value of SAR (measured) = 6.43 W/kg



0 dB = 6.43 W/kg = 8.08 dBW/kg

## System Check\_Head\_3500MHz

### DUT: D3500V2-1014

Communication System: CW; Frequency: 3500 MHz; Duty Cycle: 1:1

Medium: HSL\_3300-4200\_211222 Medium parameters used:  $f = 3500$  MHz;  $\sigma = 2.974$  S/m;  $\epsilon_r = 38.27$ ;  $\rho = 1000$  kg/m<sup>3</sup>

Ambient Temperature : 23.5 °C; Liquid Temperature : 22.5 °C

### DASY5 Configuration

- Probe: EX3DV4 - SN3578; ConvF(7.06, 7.06, 7.06) @ 3500 MHz; Calibrated: 2021/6/23
- Sensor-Surface: 1.4mm (Mechanical Surface Detection)
- Electronics: DAE3 Sn528; Calibrated: 2021/7/26
- Phantom: ELI v4.0\_Mid; Type: QDOVA001AA; Serial: TP:1026
- Measurement SW: DASY52, Version 52.10 (4); SEMCAD X Version 14.6.14 (7483)

**Pin=100mW/Area Scan (71x71x1):** Interpolated grid: dx=1.200 mm, dy=1.200 mm

Maximum value of SAR (interpolated) = 14.4 W/kg

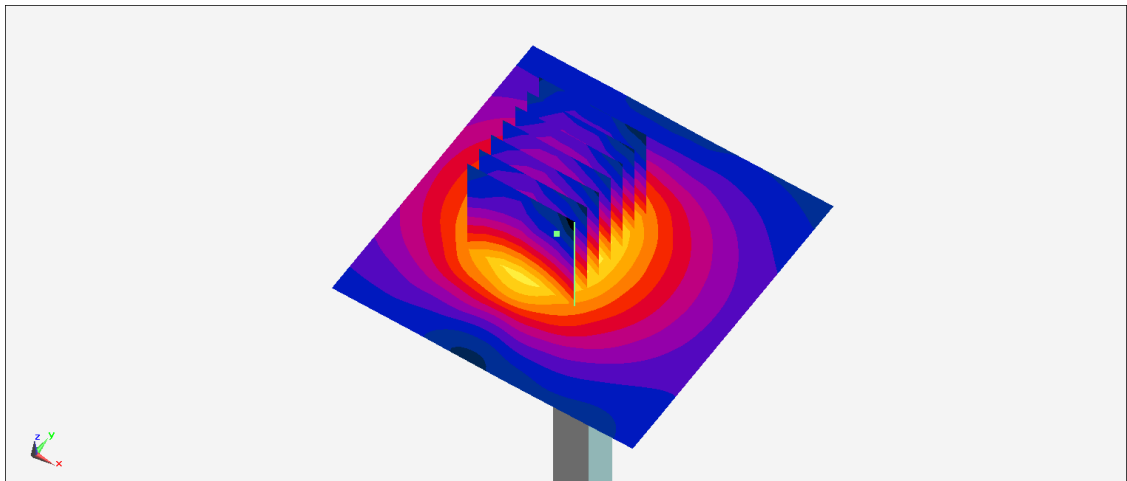
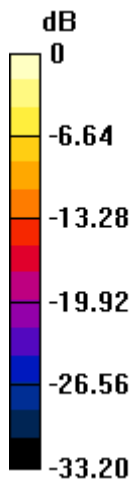
**Pin=100mW/Zoom Scan (7x7x8)/Cube 0:** Measurement grid: dx=5mm, dy=5mm, dz=1.4mm

Reference Value = 51.20 V/m; Power Drift = -0.06 dB

Peak SAR (extrapolated) = 18.1 W/kg

**SAR(1 g) = 6.43 W/kg; SAR(10 g) = 2.39 W/kg**

Maximum value of SAR (measured) = 13.1 W/kg



0 dB = 13.1 W/kg = 11.17 dBW/kg

## System Check\_Head\_3700MHz

### DUT: D3700V2-1006

Communication System: CW ; Frequency: 3700 MHz;Duty Cycle: 1:1

Medium: HSL\_3300-4200\_211023 Medium parameters used:  $f = 3700$  MHz;  $\sigma = 3.137$  S/m;  $\epsilon_r = 37.53$ ;  $\rho = 1000$  kg/m<sup>3</sup>

Ambient Temperature : 23.5 °C ; Liquid Temperature : 22.5 °C

#### DASY5 Configuration:

- Probe: EX3DV4 - SN3898; ConvF(6.77, 6.77, 6.77) @ 3700 MHz; Calibrated: 2021/6/24
- Sensor-Surface: 1.4mm (Mechanical Surface Detection)
- Electronics: DAE4 Sn1647; Calibrated: 2021/1/7
- Phantom: ELI V8.0 (20deg probe tilt); Type: QD OVA 004 AA; Serial: 2055
- Measurement SW: DASY52, Version 52.10 (4);SEMCAD X Version 14.6.14 (7501)

**Pin=50mW/Area Scan (71x71x1):** Interpolated grid: dx=1.200 mm, dy=1.200 mm

Maximum value of SAR (interpolated) = 6.84 W/kg

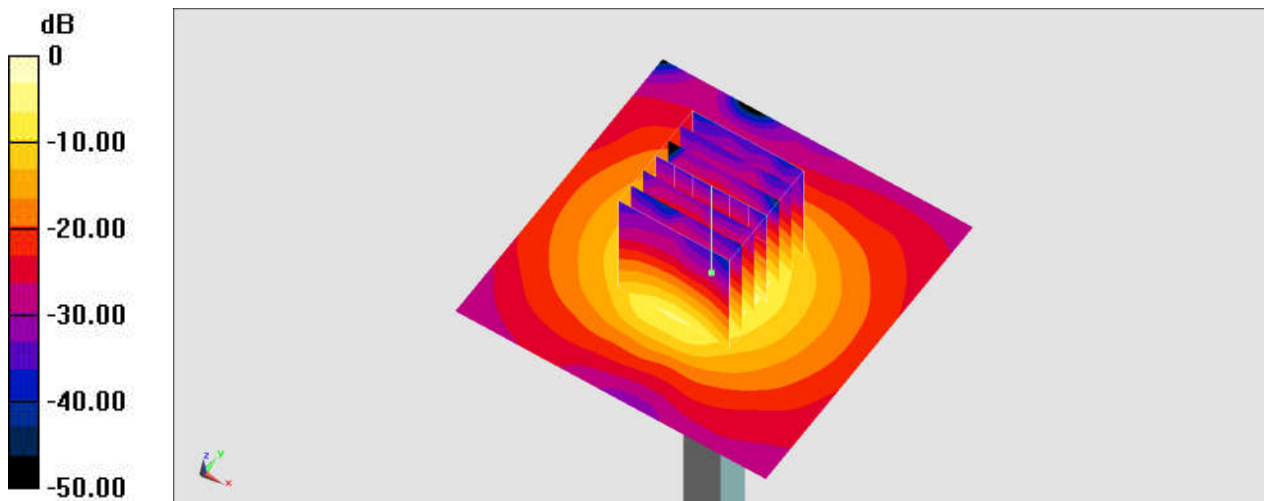
**Pin=50mW/Zoom Scan (7x7x8)/Cube 0:** Measurement grid: dx=5mm, dy=5mm, dz=1.4mm

Reference Value = 50.10 V/m; Power Drift = 0.01 dB

Peak SAR (extrapolated) = 10.1 W/kg

**SAR(1 g) = 3.46 W/kg; SAR(10 g) = 1.25 W/kg**

Maximum value of SAR (measured) = 7.13 W/kg



0 dB = 7.13 W/kg = 8.53 dBW/kg



## System Check\_Head\_3700MHz

### DUT: D3700V2-1006

Communication System: CW; Frequency: 3700 MHz; Duty Cycle: 1:1

Medium: HSL\_3300-4200\_211216 Medium parameters used:  $f = 3700$  MHz;  $\sigma = 3.203$  S/m;  $\epsilon_r = 38.218$ ;  $\rho = 1000$  kg/m<sup>3</sup>

Ambient Temperature : 23.5 °C; Liquid Temperature : 22.5 °C

### DASY5 Configuration

- Probe: EX3DV4 - SN3578; ConvF(6.96, 6.96, 6.96) @ 3700 MHz; Calibrated: 2021/6/23
- Sensor-Surface: 1.4mm (Mechanical Surface Detection)
- Electronics: DAE3 Sn528; Calibrated: 2021/7/26
- Phantom: ELI v4.0\_Mid; Type: QDOVA001AA; Serial: TP:1026
- Measurement SW: DASY52, Version 52.10 (4); SEMCAD X Version 14.6.14 (7483)

**Pin=50mW/Area Scan (71x71x1):** Interpolated grid: dx=1.200 mm, dy=1.200 mm

Maximum value of SAR (interpolated) = 6.80 W/kg

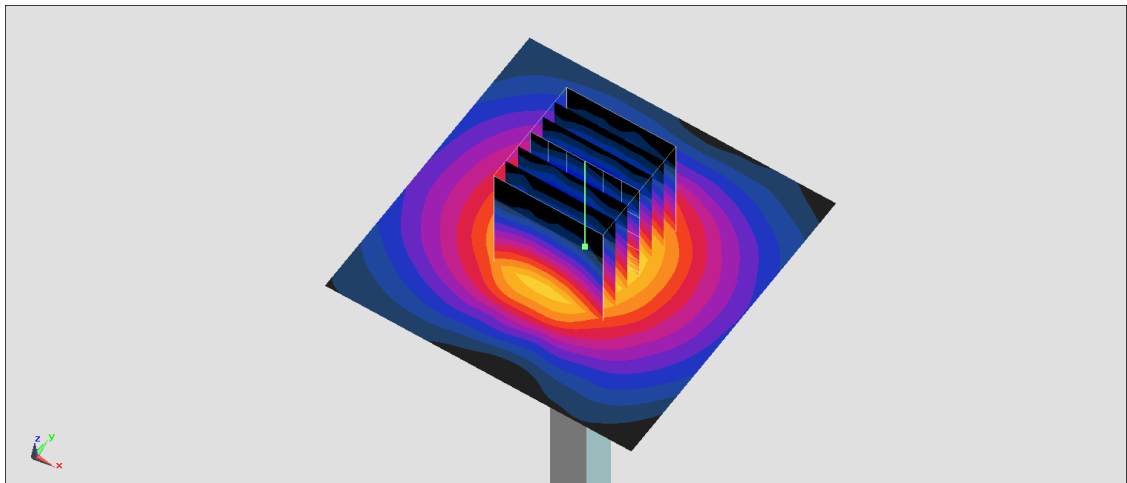
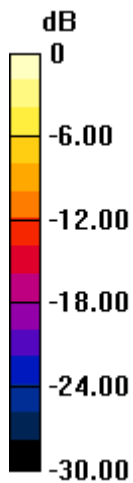
**Pin=50mW/Zoom Scan (7x7x8)/Cube 0:** Measurement grid: dx=5mm, dy=5mm, dz=1.4mm

Reference Value = 48.70 V/m; Power Drift = -0.18 dB

Peak SAR (extrapolated) = 9.56 W/kg

**SAR(1 g) = 3.34 W/kg; SAR(10 g) = 1.23 W/kg**

Maximum value of SAR (measured) = 6.70 W/kg



0 dB = 6.70 W/kg = 8.26 dBW/kg

## System Check\_Head\_3700MHz

### DUT: D3700V2-1006

Communication System: CW; Frequency: 3700 MHz; Duty Cycle: 1:1

Medium: HSL\_3300-4200\_211222 Medium parameters used:  $f = 3700$  MHz;  $\sigma = 3.187$  S/m;  $\epsilon_r = 38.068$ ;  $\rho = 1000$  kg/m<sup>3</sup>

Ambient Temperature : 23.5 °C ; Liquid Temperature : 22.5 °C

### DASY5 Configuration

- Probe: EX3DV4 - SN3578; ConvF(6.96, 6.96, 6.96) @ 3700 MHz; Calibrated: 2021/6/23
- Sensor-Surface: 1.4mm (Mechanical Surface Detection)
- Electronics: DAE3 Sn528; Calibrated: 2021/7/26
- Phantom: ELI v4.0\_Mid; Type: QDOVA001AA; Serial: TP:1026
- Measurement SW: DASY52, Version 52.10 (4); SEMCAD X Version 14.6.14 (7483)

**Pin=100mW/Area Scan (71x71x1):** Interpolated grid: dx=1.200 mm, dy=1.200 mm

Maximum value of SAR (interpolated) = 15.7 W/kg

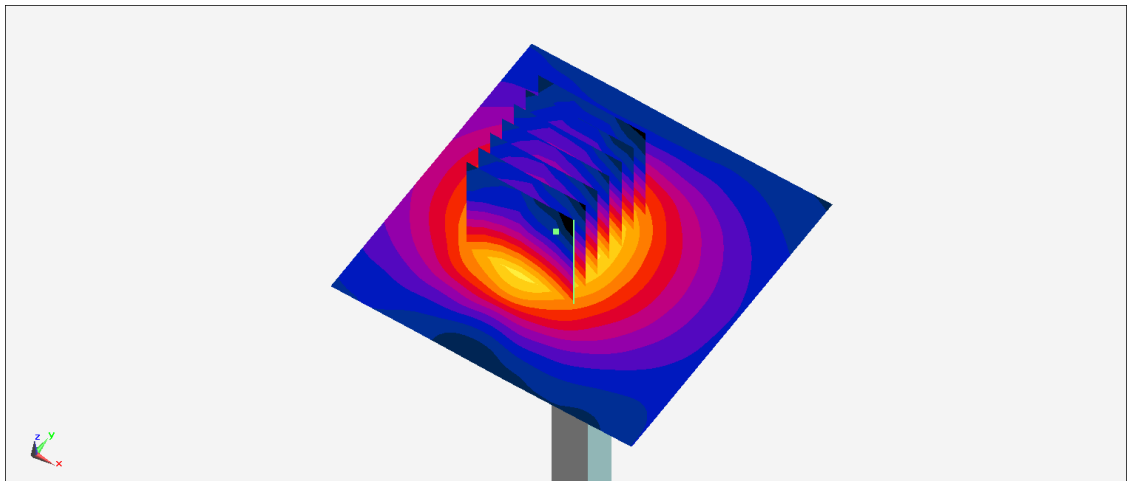
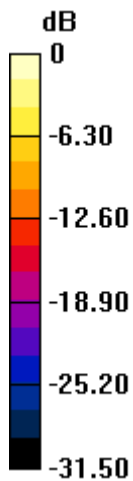
**Pin=100mW/Zoom Scan (7x7x8)/Cube 0:** Measurement grid: dx=5mm, dy=5mm, dz=1.4mm

Reference Value = 51.56 V/m; Power Drift = -0.09 dB

Peak SAR (extrapolated) = 19.7 W/kg

**SAR(1 g) = 6.99 W/kg; SAR(10 g) = 2.6 W/kg**

Maximum value of SAR (measured) = 14.2 W/kg



0 dB = 14.2 W/kg = 11.52 dBW/kg

## System Check\_Head\_3900MHz

### DUT: D3900V2-1017-3900

Communication System: CW; Frequency: 3900 MHz; Duty Cycle: 1:1

Medium: HSL\_3300-4200\_211216 Medium parameters used:  $f = 3900$  MHz;  $\sigma = 3.416$  S/m;  $\epsilon_r = 38.03$ ;  $\rho = 1000$  kg/m<sup>3</sup>

Ambient Temperature : 23.5 °C ; Liquid Temperature : 22.5 °C

#### DASY5 Configuration

- Probe: EX3DV4 - SN3578; ConvF(6.81, 6.81, 6.81) @ 3900 MHz; Calibrated: 2021/6/23
- Sensor-Surface: 1.4mm (Mechanical Surface Detection)
- Electronics: DAE3 Sn528; Calibrated: 2021/7/26
- Phantom: ELI v4.0\_Mid; Type: QDOVA001AA; Serial: TP:1026
- Measurement SW: DASY52, Version 52.10 (4); SEMCAD X Version 14.6.14 (7483)

**Pin=50mW/Area Scan (71x71x1):** Interpolated grid: dx=1.200 mm, dy=1.200 mm

Maximum value of SAR (interpolated) = 7.41 W/kg

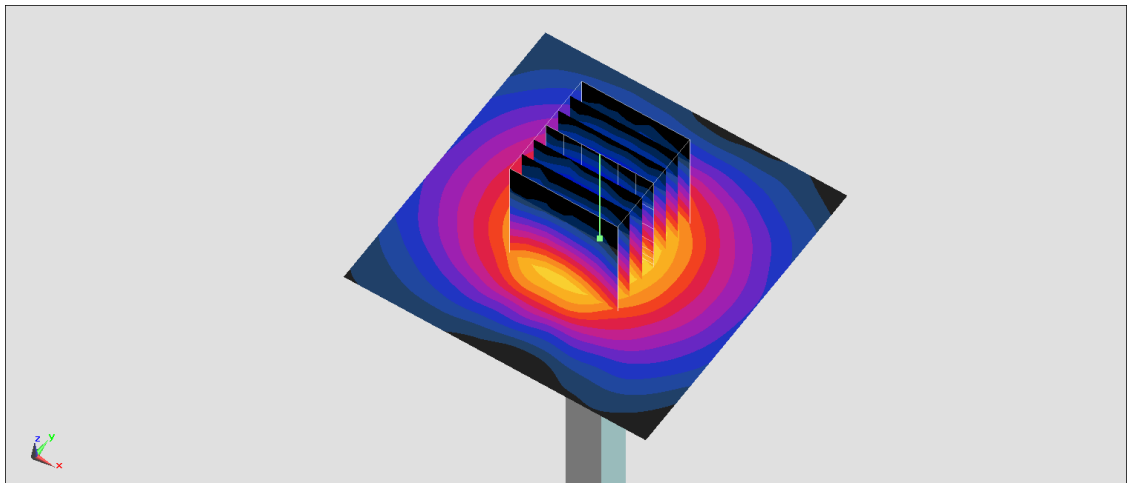
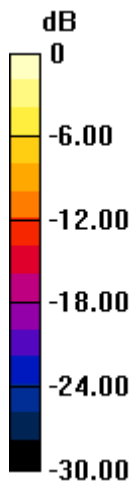
**Pin=50mW/Zoom Scan (7x7x8)/Cube 0:** Measurement grid: dx=5mm, dy=5mm, dz=1.4mm

Reference Value = 49.23 V/m; Power Drift = -0.14 dB

Peak SAR (extrapolated) = 10.4 W/kg

**SAR(1 g) = 3.64 W/kg; SAR(10 g) = 1.26 W/kg**

Maximum value of SAR (measured) = 7.30 W/kg



## System Check\_Head\_3900MHz

### DUT: D3900V2-1017-3900

Communication System: CW; Frequency: 3900 MHz; Duty Cycle: 1:1

Medium: HSL\_3300-4200\_211222 Medium parameters used:  $f = 3900$  MHz;  $\sigma = 3.399$  S/m;  $\epsilon_r = 37.88$ ;  $\rho = 1000$  kg/m<sup>3</sup>

Ambient Temperature : 23.5 °C; Liquid Temperature : 22.5 °C

DASY5 Configuration:

- Probe: EX3DV4 - SN3578; ConvF(6.81, 6.81, 6.81) @ 3900 MHz; Calibrated: 2021/6/23
- Sensor-Surface: 1.4mm (Mechanical Surface Detection)
- Electronics: DAE3 Sn528; Calibrated: 2021/7/26
- Phantom: ELI v4.0\_Mid; Type: QDOVA001AA; Serial: TP:1026
- Measurement SW: DASY52, Version 52.10 (4); SEMCAD X Version 14.6.14 (7483)

**Pin=50mW/Area Scan (61x61x1):** Interpolated grid: dx=1.200 mm, dy=1.200 mm

Maximum value of SAR (interpolated) = 5.09 W/kg

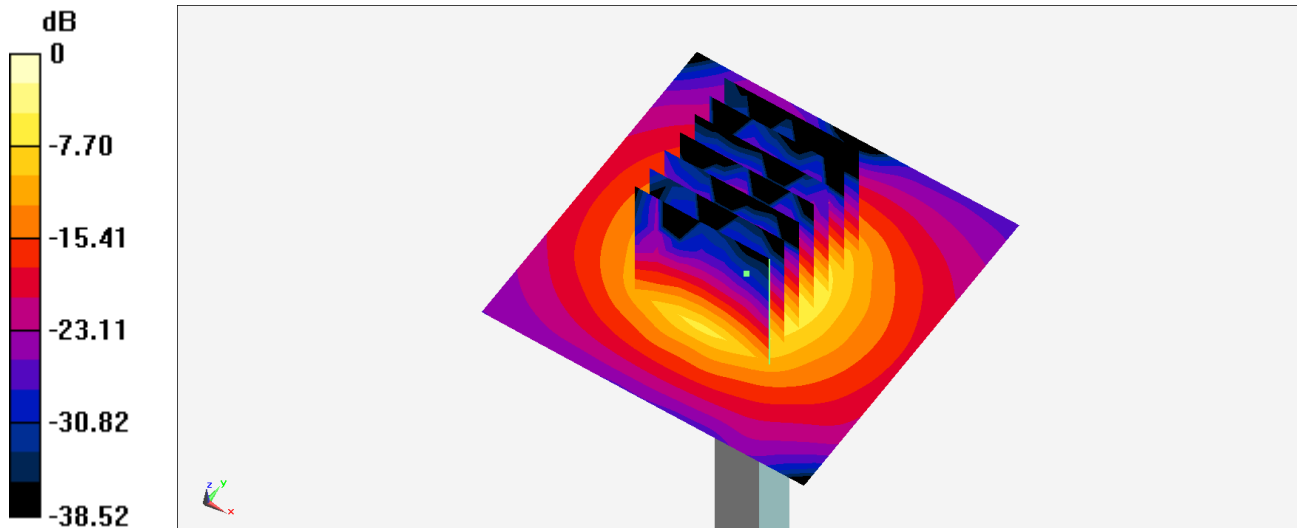
**Pin=50mW/Zoom Scan (7x7x8)/Cube 0:** Measurement grid: dx=5mm, dy=5mm, dz=1.4mm

Reference Value = 41.00 V/m; Power Drift = -0.05 dB

Peak SAR (extrapolated) = 7.30 W/kg

**SAR(1 g) = 3.42 W/kg; SAR(10 g) = 1.21 W/kg**

Maximum value of SAR (measured) = 5.12 W/kg



0 dB = 5.12 W/kg = 7.09 dBW/kg