

#01_WCDMA II_RMC 12.2Kbps_Bottom Face_0mm_Ch9538

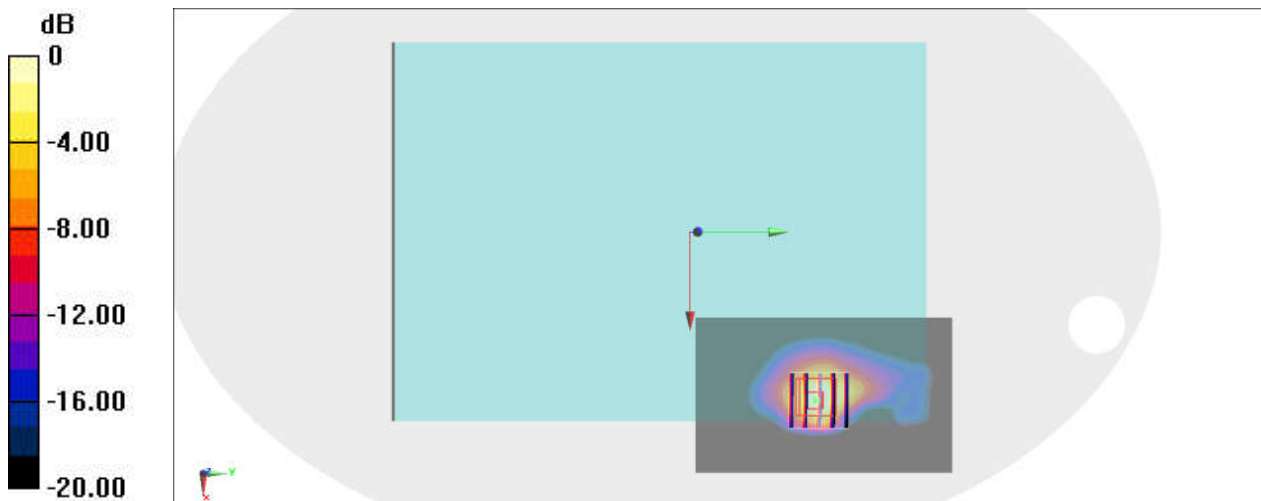
Communication System:WCDMA; Frequency: 1907.6 MHz;Duty Cycle: 1:1
Medium: HSL_1900_211018 Medium parameters used: $f = 1908 \text{ MHz}$; $\sigma = 1.458 \text{ S/m}$; $\epsilon_r = 39.318$;
 $\rho = 1000 \text{ kg/m}^3$
Ambient Temperature : $23.5 \text{ }^\circ\text{C}$; Liquid Temperature : $22.5 \text{ }^\circ\text{C}$

DASY5 Configuration:

- Probe: ES3DV3 - SN3184; ConvF(5.22, 5.22, 5.22) @ 1907.6 MHz; Calibrated: 2021/9/23
- Sensor-Surface: 3mm (Mechanical Surface Detection)
- Electronics: DAE4 Sn376; Calibrated: 2020/11/23
- Phantom: ELI V8.0 (20deg probe tilt); Type: QD OVA 004 AA; Serial: 2055
- Measurement SW: DASY52, Version 52.10 (4);SEMCAD X Version 14.6.14 (7501)

Area Scan (61x101x1): Interpolated grid: $dx=1.500 \text{ mm}$, $dy=1.500 \text{ mm}$
Maximum value of SAR (interpolated) = 1.21 W/kg

Zoom Scan (5x5x7)/Cube 0: Measurement grid: $dx=8\text{mm}$, $dy=8\text{mm}$, $dz=5\text{mm}$
Reference Value = 12.45 V/m ; Power Drift = -0.09 dB
Peak SAR (extrapolated) = 2.65 W/kg
SAR(1 g) = 0.999 W/kg ; SAR(10 g) = 0.445 W/kg
Maximum value of SAR (measured) = 1.14 W/kg



0 dB = $1.14 \text{ W/kg} = 0.57 \text{ dBW/kg}$

#02_WCDMA IV_RMC 12.2Kbps_Bottom Face_0mm_Ch1413

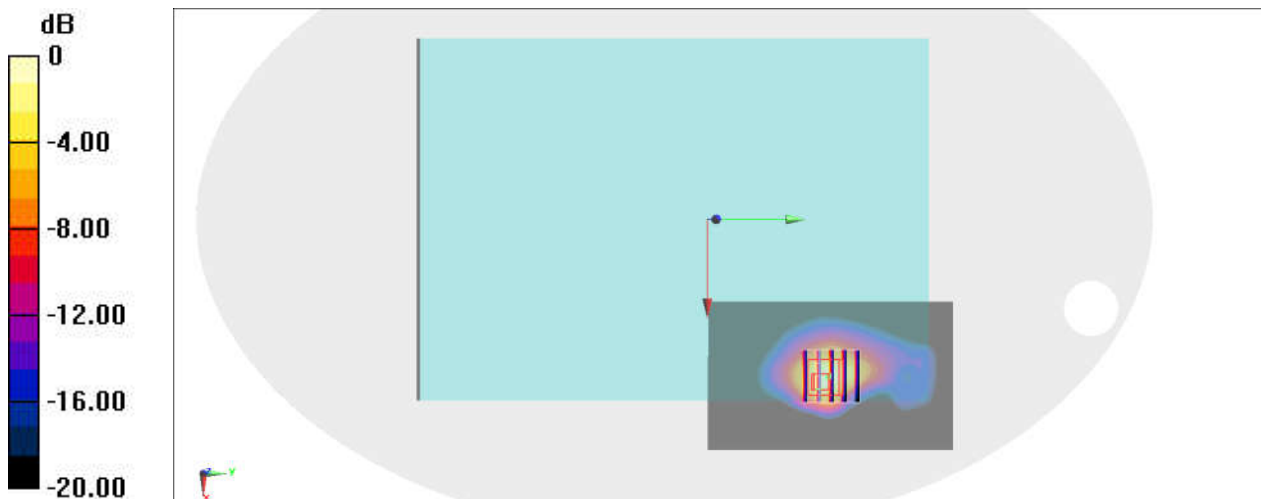
Communication System: WCDMA; Frequency: 1732.6 MHz; Duty Cycle: 1:1
Medium: HSL_1750_211018 Medium parameters used: $f = 1733 \text{ MHz}$; $\sigma = 1.358 \text{ S/m}$; $\epsilon_r = 40.977$;
 $\rho = 1000 \text{ kg/m}^3$
Ambient Temperature : $23.5 \text{ }^\circ\text{C}$; Liquid Temperature : $22.5 \text{ }^\circ\text{C}$

DASY5 Configuration:

- Probe: ES3DV3 - SN3184; ConvF(5.56, 5.56, 5.56) @ 1732.6 MHz; Calibrated: 2021/9/23
- Sensor-Surface: 3mm (Mechanical Surface Detection)
- Electronics: DAE4 Sn376; Calibrated: 2020/11/23
- Phantom: ELI V8.0 (20deg probe tilt); Type: QD OVA 004 AA; Serial: 2055
- Measurement SW: DASY52, Version 52.10 (4); SEMCAD X Version 14.6.14 (7501)

Area Scan (61x101x1): Interpolated grid: $dx=1.500 \text{ mm}$, $dy=1.500 \text{ mm}$
Maximum value of SAR (interpolated) = 1.17 W/kg

Zoom Scan (5x5x7)/Cube 0: Measurement grid: $dx=8\text{mm}$, $dy=8\text{mm}$, $dz=5\text{mm}$
Reference Value = 14.22 V/m ; Power Drift = -0.09 dB
Peak SAR (extrapolated) = 2.73 W/kg
SAR(1 g) = 1.02 W/kg ; SAR(10 g) = 0.440 W/kg
Maximum value of SAR (measured) = 1.31 W/kg



0 dB = $1.31 \text{ W/kg} = 1.17 \text{ dBW/kg}$

#03_WCDMA V_RMC 12.2Kbps_Bottom Face_0mm_Ch4233

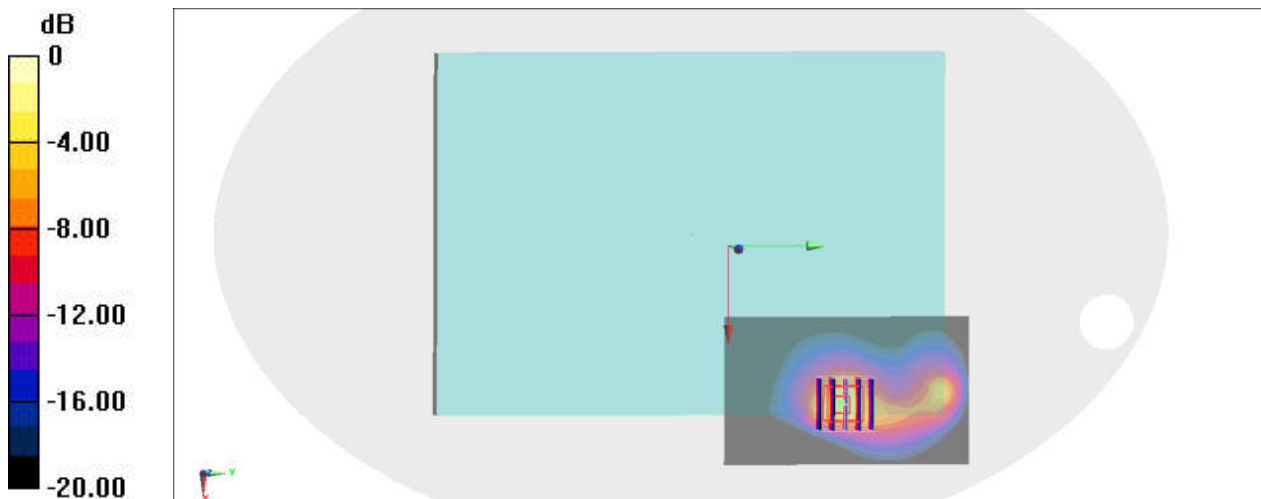
Communication System: WCDMA; Frequency: 846.6 MHz; Duty Cycle: 1:1
Medium: HSL_850_211017 Medium parameters used: $f = 847$ MHz; $\sigma = 0.94$ S/m; $\epsilon_r = 42.96$; $\rho = 1000$ kg/m³
Ambient Temperature : 23.5 °C; Liquid Temperature : 22.5 °C

DASY5 Configuration:

- Probe: ES3DV3 - SN3184; ConvF(6.49, 6.49, 6.49) @ 846.6 MHz; Calibrated: 2021/9/23
- Sensor-Surface: 3mm (Mechanical Surface Detection)
- Electronics: DAE4 Sn376; Calibrated: 2020/11/23
- Phantom: ELI V8.0 (20deg probe tilt); Type: QD OVA 004 AA; Serial: 2055
- Measurement SW: DASY52, Version 52.10 (4); SEMCAD X Version 14.6.14 (7501)

Area Scan (61x101x1): Interpolated grid: dx=1.500 mm, dy=1.500 mm
Maximum value of SAR (interpolated) = 1.00 W/kg

Zoom Scan (5x5x7)/Cube 0: Measurement grid: dx=8mm, dy=8mm, dz=5mm
Reference Value = 24.25 V/m; Power Drift = 0.02 dB
Peak SAR (extrapolated) = 3.09 W/kg
SAR(1 g) = 0.921 W/kg; SAR(10 g) = 0.349 W/kg
Maximum value of SAR (measured) = 1.44 W/kg



0 dB = 1.44 W/kg = 1.58 dBW/kg

#04_LTE Band 7_20M_QPSK_50_0_Edge 4_0mm_Ch21350

Communication System: LTE ; Frequency: 2560 MHz;Duty Cycle: 1:1

Medium: HSL_2600_211024 Medium parameters used: $f = 2560$ MHz; $\sigma = 1.899$ S/m; $\epsilon_r = 38.471$;
 $\rho = 1000$ kg/m³

Ambient Temperature : 23.4 °C ; Liquid Temperature : 22.4 °C

DASY5 Configuration:

- Probe: ES3DV3 - SN3184; ConvF(4.48, 4.48, 4.48) @ 2560 MHz; Calibrated: 2021/9/23
- Sensor-Surface: 3mm (Mechanical Surface Detection)
- Electronics: DAE4 Sn376; Calibrated: 2020/11/23
- Phantom: ELI V8.0 (20deg probe tilt); Type: QD OVA 004 AA; Serial: 2055
- Measurement SW: DASY52, Version 52.10 (4);SEMCAD X Version 14.6.14 (7501)

Area Scan (81x101x1): Interpolated grid: dx=1.200 mm, dy=1.200 mm

Maximum value of SAR (interpolated) = 1.85 W/kg

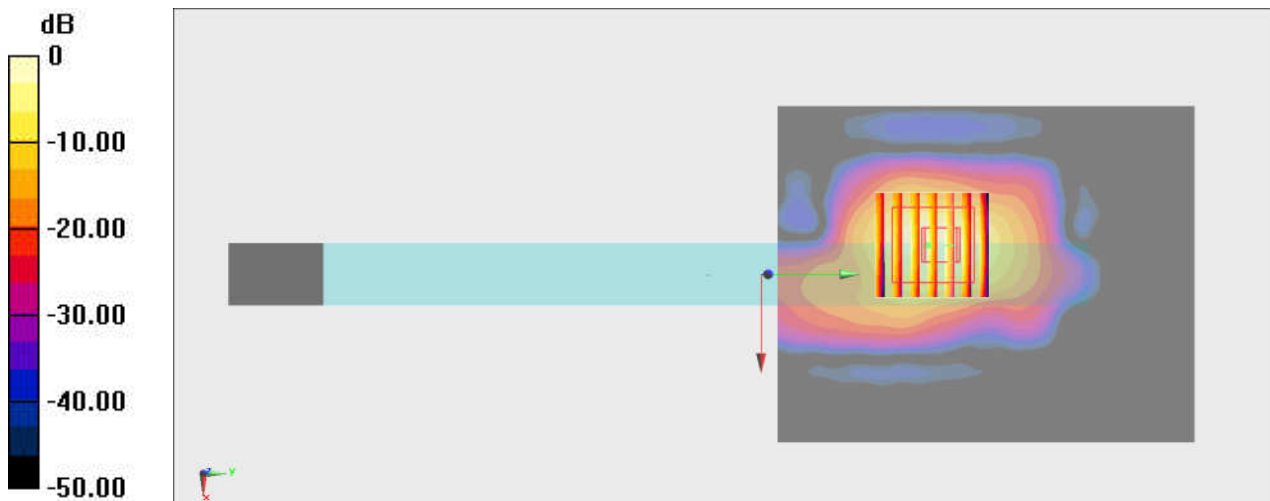
Zoom Scan (7x7x7)/Cube 0: Measurement grid: dx=5mm, dy=5mm, dz=5mm

Reference Value = 11.68 V/m; Power Drift = -0.08 dB

Peak SAR (extrapolated) = 3.80 W/kg

SAR(1 g) = 1.11 W/kg; SAR(10 g) = 0.392 W/kg

Maximum value of SAR (measured) = 1.75 W/kg



0 dB = 1.75 W/kg = 2.43 dBW/kg

#05_LTE Band 12_10M_QPSK_25_0_Edge 2_0mm_Ch23095

Communication System: LTE; Frequency: 707.5 MHz; Duty Cycle: 1:1

Medium: HSL_750_211017 Medium parameters used: $f = 707.5$ MHz; $\sigma = 0.888$ S/m; $\epsilon_r = 43.645$;

$\rho = 1000$ kg/m³

Ambient Temperature : 23.5 °C ; Liquid Temperature : 22.5 °C

DASY5 Configuration:

- Probe: ES3DV3 - SN3184; ConvF(6.59, 6.59, 6.59) @ 707.5 MHz; Calibrated: 2021/9/23
- Sensor-Surface: 3mm (Mechanical Surface Detection)
- Electronics: DAE4 Sn376; Calibrated: 2020/11/23
- Phantom: ELI V8.0 (20deg probe tilt); Type: QD OVA 004 AA; Serial: 2055
- Measurement SW: DASY52, Version 52.10 (4); SEMCAD X Version 14.6.14 (7501)

Area Scan (61x91x1): Interpolated grid: dx=1.500 mm, dy=1.500 mm

Maximum value of SAR (interpolated) = 2.78 W/kg

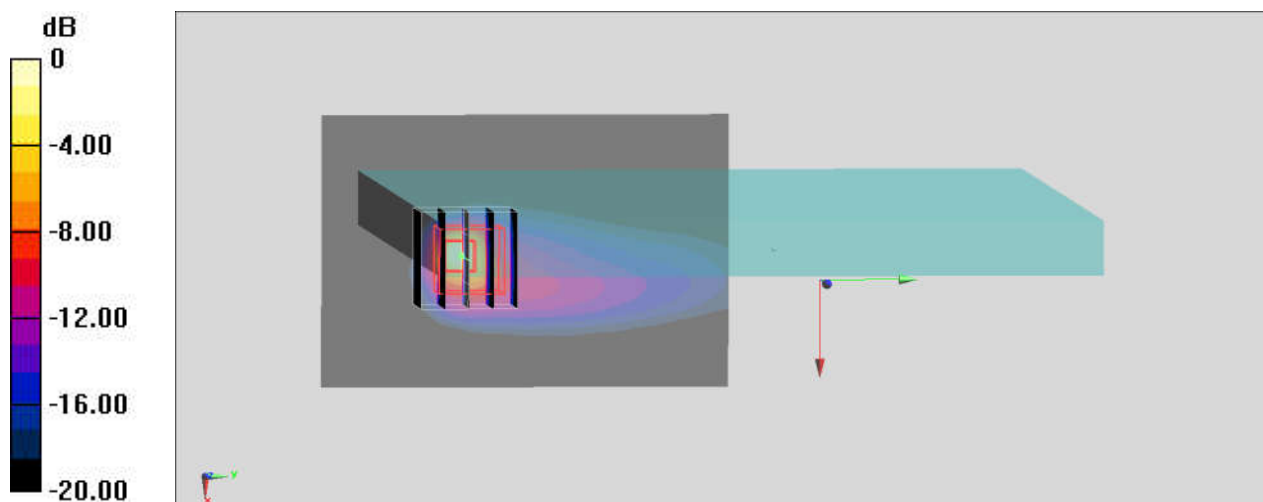
Zoom Scan (5x5x7)/Cube 0: Measurement grid: dx=8mm, dy=8mm, dz=5mm

Reference Value = 17.40 V/m; Power Drift = 0.02 dB

Peak SAR (extrapolated) = 7.52 W/kg

SAR(1 g) = 1.000 W/kg; SAR(10 g) = 0.232 W/kg

Maximum value of SAR (measured) = 2.59 W/kg



0 dB = 2.59 W/kg = 4.13 dBW/kg

#06_LTE Band 13_10M_QPSK_50_0_Bottom Face_0mm_Ch23230

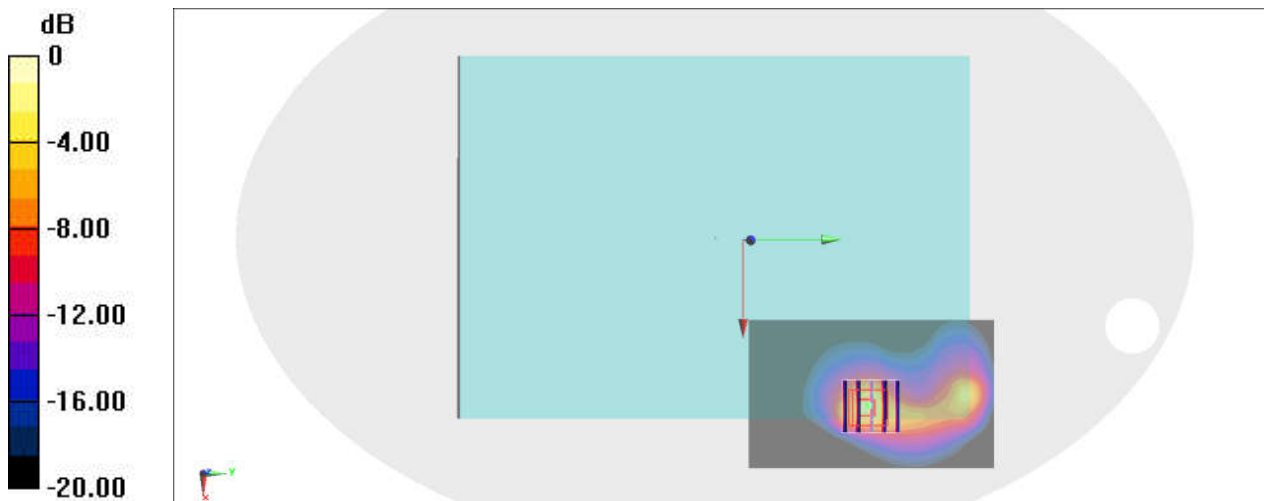
Communication System: LTE; Frequency: 782 MHz; Duty Cycle: 1:1
Medium: HSL_750_211017 Medium parameters used: $f = 782 \text{ MHz}$; $\sigma = 0.914 \text{ S/m}$; $\epsilon_r = 43.17$; $\rho = 1000 \text{ kg/m}^3$
Ambient Temperature : $23.5 \text{ }^\circ\text{C}$; Liquid Temperature : $22.5 \text{ }^\circ\text{C}$

DASY5 Configuration:

- Probe: ES3DV3 - SN3184; ConvF(6.59, 6.59, 6.59) @ 782 MHz; Calibrated: 2021/9/23
- Sensor-Surface: 3mm (Mechanical Surface Detection)
- Electronics: DAE4 Sn376; Calibrated: 2020/11/23
- Phantom: ELI V8.0 (20deg probe tilt); Type: QD OVA 004 AA; Serial: 2055
- Measurement SW: DASY52, Version 52.10 (4); SEMCAD X Version 14.6.14 (7501)

Area Scan (61x101x1): Interpolated grid: $dx=1.500 \text{ mm}$, $dy=1.500 \text{ mm}$
Maximum value of SAR (interpolated) = 1.03 W/kg

Zoom Scan (5x5x7)/Cube 0: Measurement grid: $dx=8\text{mm}$, $dy=8\text{mm}$, $dz=5\text{mm}$
Reference Value = 26.56 V/m ; Power Drift = 0.05 dB
Peak SAR (extrapolated) = 3.58 W/kg
SAR(1 g) = 0.994 W/kg ; SAR(10 g) = 0.360 W/kg
Maximum value of SAR (measured) = 1.67 W/kg



0 dB = $1.67 \text{ W/kg} = 2.23 \text{ dBW/kg}$

#07_LTE Band 14_10M_QPSK_50_0_Bottom Face_0mm_Ch23330

Communication System: LTE; Frequency: 793 MHz; Duty Cycle: 1:1

Medium: HSL_750_211017 Medium parameters used: $f = 793$ MHz; $\sigma = 0.918$ S/m; $\epsilon_r = 43.132$; $\rho = 1000$ kg/m³

Ambient Temperature : 23.5 °C; Liquid Temperature : 22.5 °C

DASY5 Configuration:

- Probe: ES3DV3 - SN3184; ConvF(6.59, 6.59, 6.59) @ 793 MHz; Calibrated: 2021/9/23
- Sensor-Surface: 3mm (Mechanical Surface Detection)
- Electronics: DAE4 Sn376; Calibrated: 2020/11/23
- Phantom: ELI V8.0 (20deg probe tilt); Type: QD OVA 004 AA; Serial: 2055
- Measurement SW: DASY52, Version 52.10 (4); SEMCAD X Version 14.6.14 (7501)

Area Scan (61x101x1): Interpolated grid: dx=1.500 mm, dy=1.500 mm

Maximum value of SAR (interpolated) = 1.06 W/kg

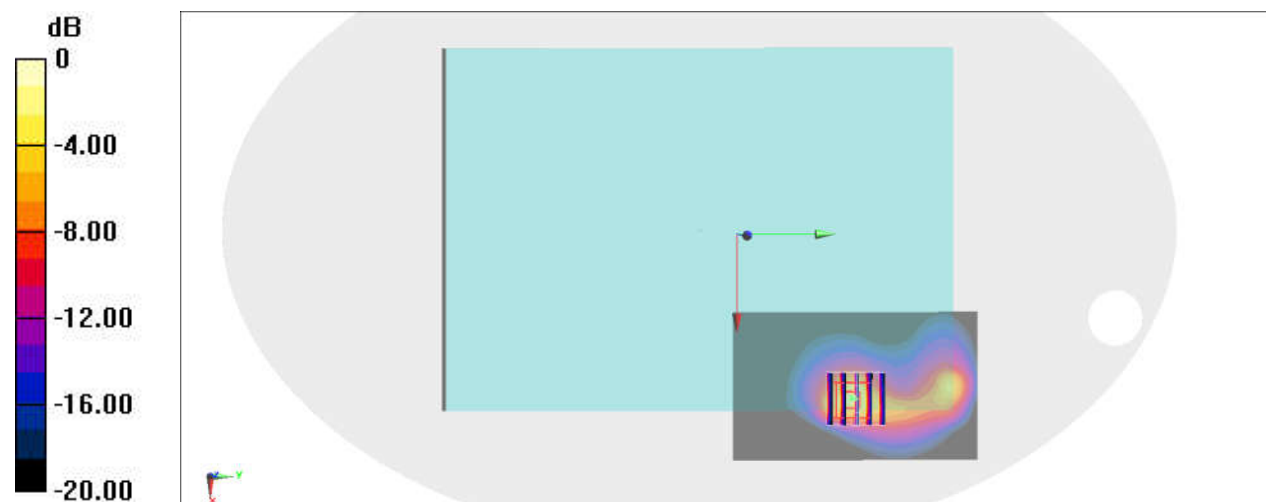
Zoom Scan (5x5x7)/Cube 0: Measurement grid: dx=8mm, dy=8mm, dz=5mm

Reference Value = 27.18 V/m; Power Drift = 0.01 dB

Peak SAR (extrapolated) = 3.74 W/kg

SAR(1 g) = 1.03 W/kg; SAR(10 g) = 0.381 W/kg

Maximum value of SAR (measured) = 1.74 W/kg



#08_LTE Band 25_20M_QPSK_50_0_Bottom Face_0mm_Ch26590

Communication System: LTE; Frequency: 1905 MHz; Duty Cycle: 1:1

Medium: HSL_1900_211018 Medium parameters used: $f = 1905$ MHz; $\sigma = 1.455$ S/m; $\epsilon_r = 39.33$; $\rho = 1000$ kg/m³

Ambient Temperature : 23.5 °C ; Liquid Temperature : 22.5 °C

DASY5 Configuration:

- Probe: ES3DV3 - SN3184; ConvF(5.22, 5.22, 5.22) @ 1905 MHz; Calibrated: 2021/9/23
- Sensor-Surface: 3mm (Mechanical Surface Detection)
- Electronics: DAE4 Sn376; Calibrated: 2020/11/23
- Phantom: ELI V8.0 (20deg probe tilt); Type: QD OVA 004 AA; Serial: 2055
- Measurement SW: DASY52, Version 52.10 (4); SEMCAD X Version 14.6.14 (7501)

Area Scan (61x101x1): Interpolated grid: dx=1.500 mm, dy=1.500 mm

Maximum value of SAR (interpolated) = 1.33 W/kg

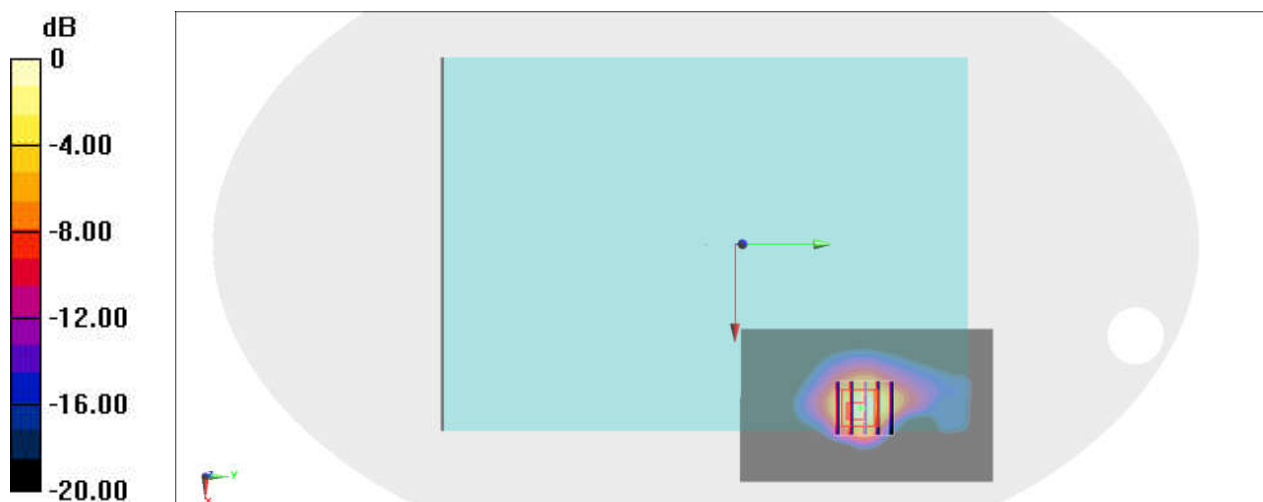
Zoom Scan (5x5x7)/Cube 0: Measurement grid: dx=8mm, dy=8mm, dz=5mm

Reference Value = 9.001 V/m; Power Drift = 0.02 dB

Peak SAR (extrapolated) = 2.87 W/kg

SAR(1 g) = 1.12 W/kg; SAR(10 g) = 0.484 W/kg

Maximum value of SAR (measured) = 1.38 W/kg



0 dB = 1.38 W/kg = 1.40 dBW/kg

#09_LTE Band 26_15M_QPSK_36_0_Bottom Face_0mm_Ch26865

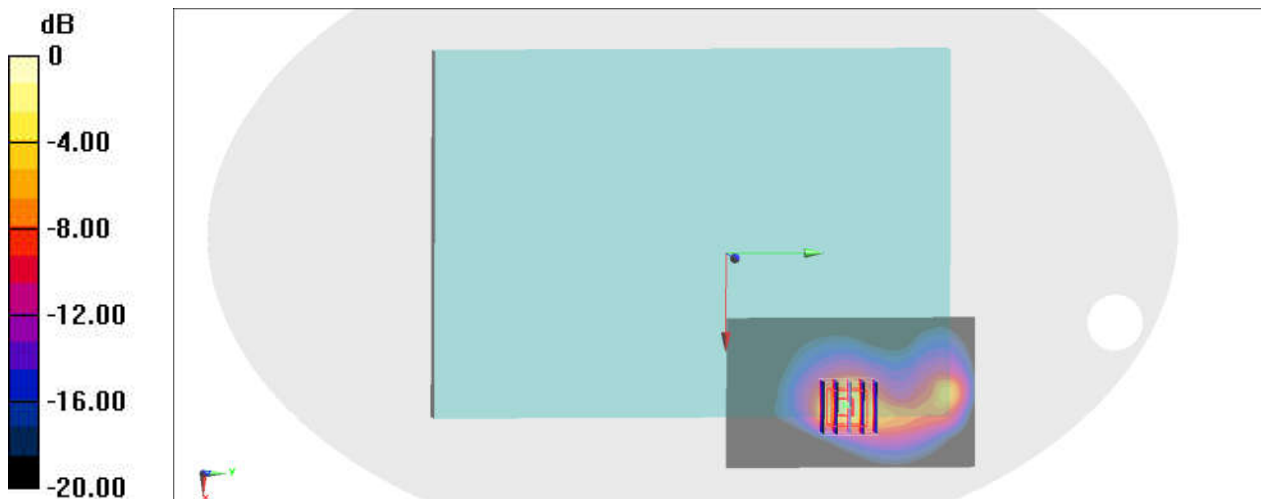
Communication System: LTE; Frequency: 831.5 MHz; Duty Cycle: 1:1
Medium: HSL_850_211017 Medium parameters used: $f = 831.5$ MHz; $\sigma = 0.934$ S/m; $\epsilon_r = 43.066$;
 $\rho = 1000$ kg/m³
Ambient Temperature : 23.5 °C ; Liquid Temperature : 22.5 °C

DASY5 Configuration:

- Probe: ES3DV3 - SN3184; ConvF(6.49, 6.49, 6.49) @ 831.5 MHz; Calibrated: 2021/9/23
- Sensor-Surface: 3mm (Mechanical Surface Detection)
- Electronics: DAE4 Sn376; Calibrated: 2020/11/23
- Phantom: ELI V8.0 (20deg probe tilt); Type: QD OVA 004 AA; Serial: 2055
- Measurement SW: DASY52, Version 52.10 (4); SEMCAD X Version 14.6.14 (7501)

Area Scan (61x101x1): Interpolated grid: dx=1.500 mm, dy=1.500 mm
Maximum value of SAR (interpolated) = 1.05 W/kg

Zoom Scan (5x5x7)/Cube 0: Measurement grid: dx=8mm, dy=8mm, dz=5mm
Reference Value = 26.13 V/m; Power Drift = 0.06 dB
Peak SAR (extrapolated) = 3.51 W/kg
SAR(1 g) = 1.02 W/kg; SAR(10 g) = 0.382 W/kg
Maximum value of SAR (measured) = 1.60 W/kg



0 dB = 1.60 W/kg = 2.04 dBW/kg

#10_LTE Band 30_10M_QPSK_50_0_Edge 4_0mm_Ch27710

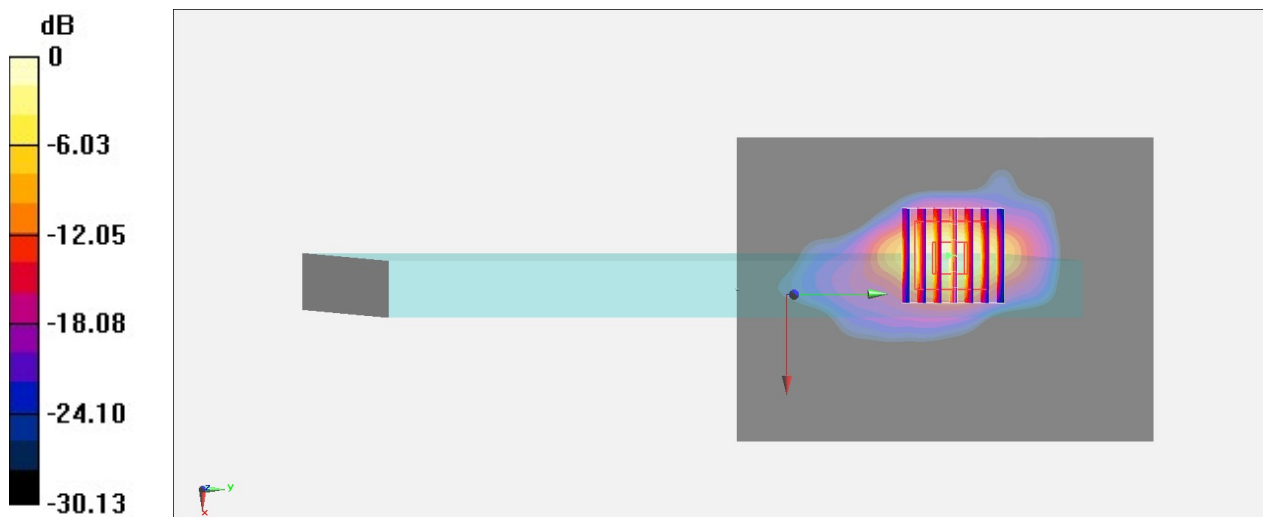
Communication System: LTE; Frequency: 2310 MHz; Duty Cycle: 1:1
Medium: HSL_2300_211027 Medium parameters used: $f = 2310$ MHz; $\sigma = 1.674$ S/m; $\epsilon_r = 40.923$;
 $\rho = 1000$ kg/m³
Ambient Temperature : 23.7 °C ; Liquid Temperature : 22.7 °C

DASY5 Configuration:

- Probe: EX3DV4 - SN3898; ConvF(7.78, 7.78, 7.78) @ 2310 MHz; Calibrated: 2021/6/24
- Sensor-Surface: 1.4mm (Mechanical Surface Detection)
- Electronics: DAE4 Sn1647; Calibrated: 2021/1/7
- Phantom: ELI v4.0_Right; Type: QDOVA001BB; Serial: TP:1025
- Measurement SW: DASY52, Version 52.10 (4); SEMCAD X Version 14.6.14 (7501)

Area Scan (81x111x1): Interpolated grid: dx=1.200 mm, dy=1.200 mm
Maximum value of SAR (interpolated) = 2.32 W/kg

Zoom Scan (7x7x7)/Cube 0: Measurement grid: dx=5mm, dy=5mm, dz=5mm
Reference Value = 26.75 V/m; Power Drift = -0.11 dB
Peak SAR (extrapolated) = 3.06 W/kg
SAR(1 g) = 1.07 W/kg; SAR(10 g) = 0.383 W/kg
Maximum value of SAR (measured) = 2.19 W/kg



0 dB = 2.19 W/kg = 3.40 dBW/kg

#11_LTE Band 66_20M_QPSK_50_0_Bottom Face_0mm_Ch132572

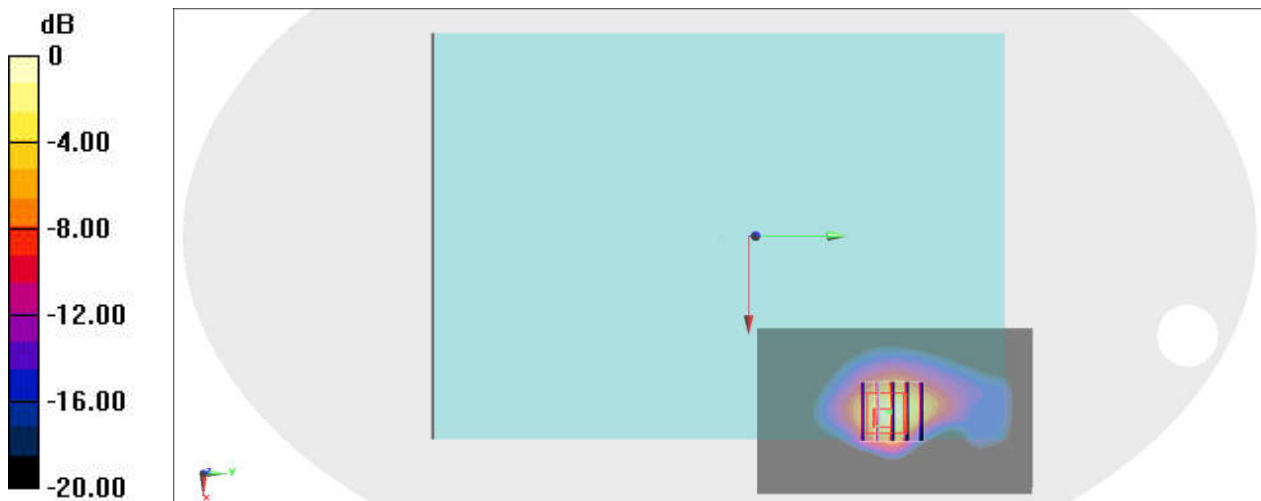
Communication System: LTE; Frequency: 1770 MHz; Duty Cycle: 1:1
Medium: HSL_1750_211018 Medium parameters used: $f = 1770$ MHz; $\sigma = 1.39$ S/m; $\epsilon_r = 40.834$; $\rho = 1000$ kg/m³
Ambient Temperature : 23.5 °C; Liquid Temperature : 22.5 °C

DASY5 Configuration:

- Probe: ES3DV3 - SN3184; ConvF(5.56, 5.56, 5.56) @ 1770 MHz; Calibrated: 2021/9/23
- Sensor-Surface: 3mm (Mechanical Surface Detection)
- Electronics: DAE4 Sn376; Calibrated: 2020/11/23
- Phantom: ELI V8.0 (20deg probe tilt); Type: QD OVA 004 AA; Serial: 2055
- Measurement SW: DASY52, Version 52.10 (4); SEMCAD X Version 14.6.14 (7501)

Area Scan (61x101x1): Interpolated grid: $dx=1.500$ mm, $dy=1.500$ mm
Maximum value of SAR (interpolated) = 1.30 W/kg

Zoom Scan (5x5x7)/Cube 0: Measurement grid: $dx=8$ mm, $dy=8$ mm, $dz=5$ mm
Reference Value = 14.50 V/m; Power Drift = -0.09 dB
Peak SAR (extrapolated) = 3.19 W/kg
SAR(1 g) = 1.15 W/kg; SAR(10 g) = 0.491 W/kg
Maximum value of SAR (measured) = 1.54 W/kg



0 dB = 1.54 W/kg = 1.88 dBW/kg

#12_LTE Band 71_20M_QPSK_50_0_Edge 2_0mm_Ch133322

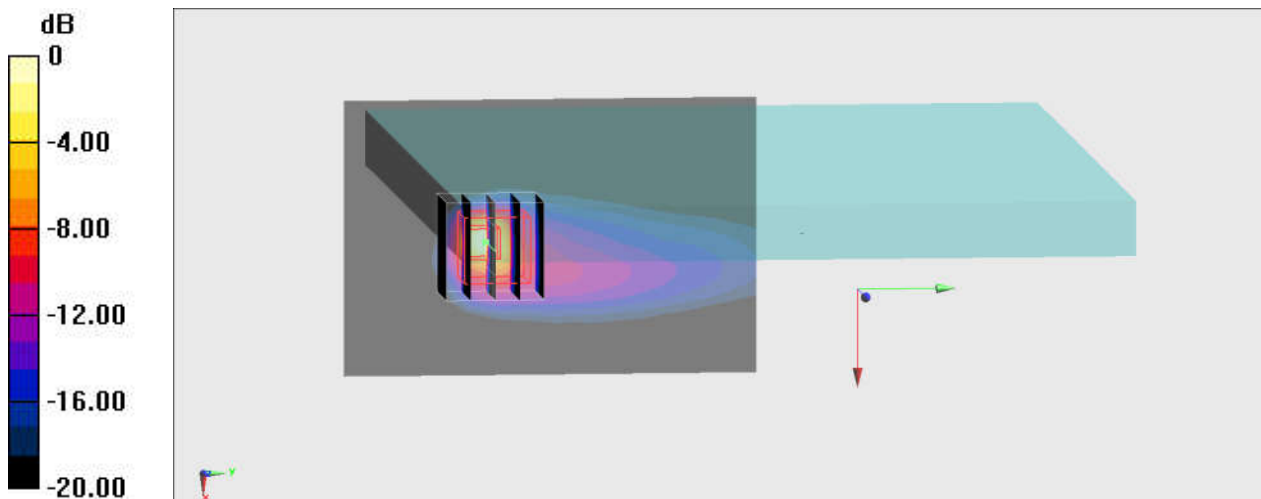
Communication System:LTE; Frequency: 683 MHz;Duty Cycle: 1:1
Medium: HSL_750_211017 Medium parameters used: $f = 683 \text{ MHz}$; $\sigma = 0.878 \text{ S/m}$; $\epsilon_r = 43.743$; $\rho = 1000 \text{ kg/m}^3$
Ambient Temperature : $23.5 \text{ }^\circ\text{C}$; Liquid Temperature : $22.5 \text{ }^\circ\text{C}$

DASY5 Configuration:

- Probe: ES3DV3 - SN3184; ConvF(6.59, 6.59, 6.59) @ 683 MHz; Calibrated: 2021/9/23
- Sensor-Surface: 3mm (Mechanical Surface Detection)
- Electronics: DAE4 Sn376; Calibrated: 2020/11/23
- Phantom: ELI V8.0 (20deg probe tilt); Type: QD OVA 004 AA; Serial: 2055
- Measurement SW: DASY52, Version 52.10 (4);SEMCAD X Version 14.6.14 (7501)

Area Scan (61x91x1): Interpolated grid: $dx=1.500 \text{ mm}$, $dy=1.500 \text{ mm}$
Maximum value of SAR (interpolated) = 2.59 W/kg

Zoom Scan (5x5x7)/Cube 0: Measurement grid: $dx=8\text{mm}$, $dy=8\text{mm}$, $dz=5\text{mm}$
Reference Value = 16.22 V/m ; Power Drift = -0.00 dB
Peak SAR (extrapolated) = 7.08 W/kg
SAR(1 g) = 0.918 W/kg ; SAR(10 g) = 0.209 W/kg
Maximum value of SAR (measured) = 2.37 W/kg



0 dB = $2.37 \text{ W/kg} = 3.75 \text{ dBW/kg}$

#13_LTE Band 38_20M_QPSK_1_0_Bottom Face_0mm_Ch38000

Communication System: LTE; Frequency: 2595 MHz; Duty Cycle: 1:1.59

Medium: HSL_2600_211221 Medium parameters used : $f = 2595$ MHz; $\sigma = 1.95$ S/m; $\epsilon_r = 38.387$; $\rho = 1000$ kg/m³

Ambient Temperature : 23.5 °C ; Liquid Temperature : 22.5 °C

DASY5 Configuration:

- Probe: EX3DV4 - SN3578; ConvF(7.22, 7.22, 7.22) @ 2595 MHz; Calibrated: 2021/6/23
- Sensor-Surface: 1.4mm (Mechanical Surface Detection)
- Electronics: DAE3 Sn528; Calibrated: 2021/7/26
- Phantom: ELI v5.0_Left; Type: QDOVA002AA; Serial: TP:1191
- Measurement SW: DASY52, Version 52.10 (4); SEMCAD X Version 14.6.14 (7483)

Area Scan (71x101x1): Interpolated grid: dx=1.200 mm, dy=1.200 mm

Maximum value of SAR (interpolated) = 1.35 W/kg

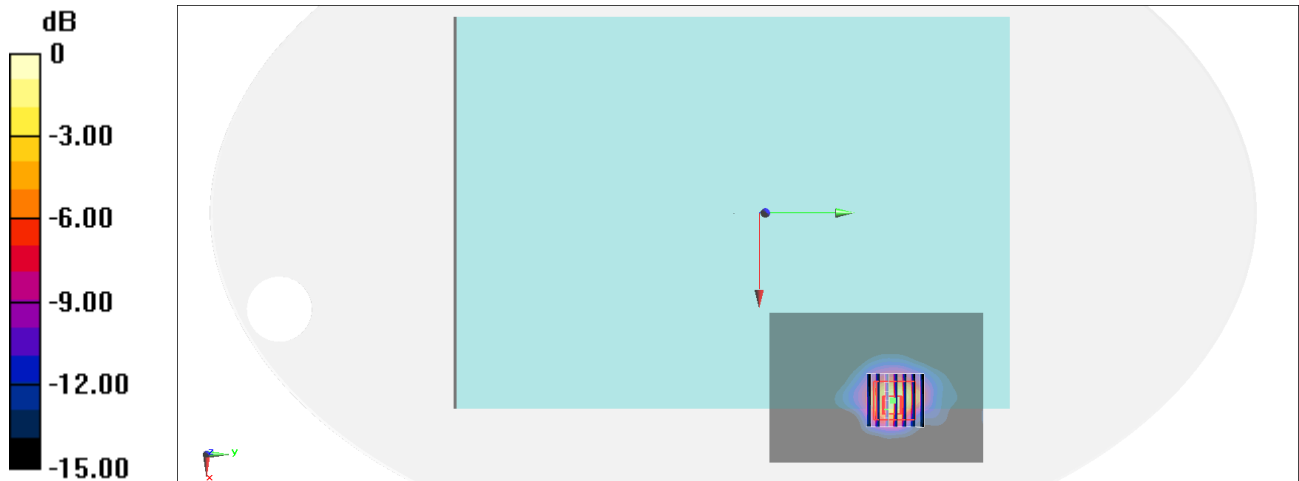
Zoom Scan (7x7x7)/Cube 0: Measurement grid: dx=5mm, dy=5mm, dz=5mm

Reference Value = 22.36 V/m; Power Drift = -0.02 dB

Peak SAR (extrapolated) = 2.52 W/kg

SAR(1 g) = 0.860 W/kg; SAR(10 g) = 0.373 W/kg

Maximum value of SAR (measured) = 1.77 W/kg



0 dB = 1.77 W/kg = 2.48 dBW/kg

#14_LTE Band 41_20M_QPSK_1_0_Bottom Face_0mm_Ch40620;set100

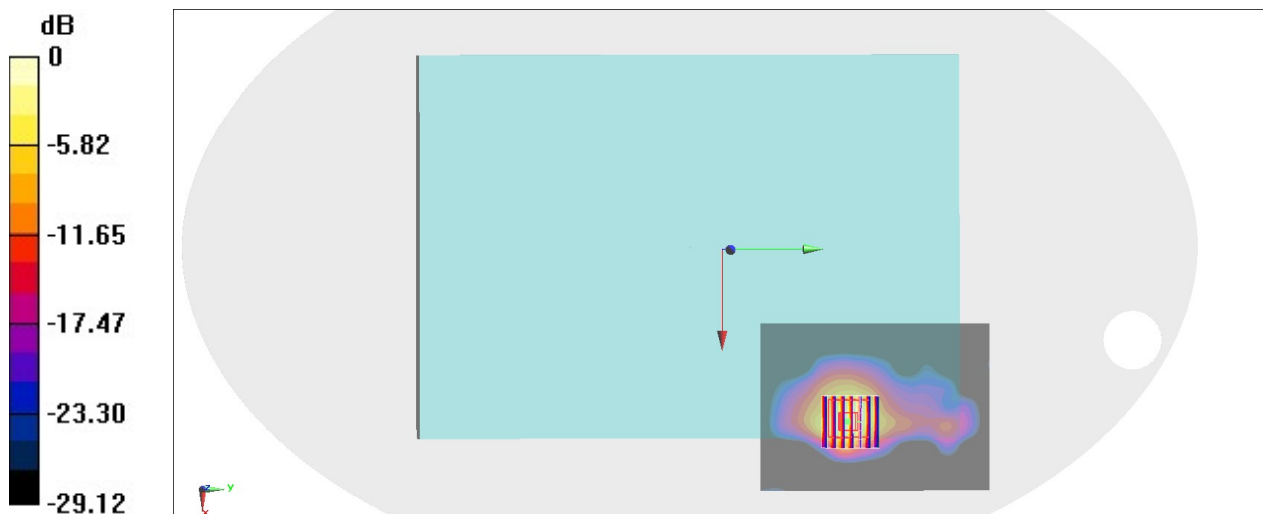
Communication System: LTE; Frequency: 2593 MHz; Duty Cycle: 1:1.59
Medium: HSL_2600_211024 Medium parameters used : $f = 2593$ MHz; $\sigma = 1.92$ S/m; $\epsilon_r = 38.403$;
 $\rho = 1000$ kg/m³
Ambient Temperature : 23.4 °C ; Liquid Temperature : 22.4 °C

DASY5 Configuration:

- Probe: ES3DV3 - SN3184; ConvF(4.48, 4.48, 4.48) @ 2593 MHz; Calibrated: 2021/9/23
- Sensor-Surface: 3mm (Mechanical Surface Detection)
- Electronics: DAE4 Sn376; Calibrated: 2020/11/23
- Phantom: ELI V8.0 (20deg probe tilt); Type: QD OVA 004 AA; Serial: 2055
- Measurement SW: DASY52, Version 52.10 (4); SEMCAD X Version 14.6.14 (7501)

Area Scan (81x111x1): Interpolated grid: dx=1.200 mm, dy=1.200 mm
Maximum value of SAR (interpolated) = 1.74 W/kg

Zoom Scan (7x7x7)/Cube 0: Measurement grid: dx=5mm, dy=5mm, dz=5mm
Reference Value = 17.03 V/m; Power Drift = -0.05 dB
Peak SAR (extrapolated) = 2.78 W/kg
SAR(1 g) = 0.954 W/kg; SAR(10 g) = 0.382 W/kg
Maximum value of SAR (measured) = 1.29 W/kg



0 dB = 1.29 W/kg = 1.11 dBW/kg

#15_LTE Band 48_20M_QPSK_1_0_Bottom Face_0mm_Ch55830

Communication System: LTE; Frequency: 3609 MHz; Duty Cycle: 1:1.59

Medium: HSL_3300-4200_211222 Medium parameters used : $f = 3609$ MHz; $\sigma = 3.09$ S/m; $\epsilon_r = 38.154$; $\rho = 1000$ kg/m³

Ambient Temperature : 23.5 °C ; Liquid Temperature : 22.5 °C

DASY5 Configuration

- Probe: EX3DV4 - SN3578; ConvF(6.96, 6.96, 6.96) @ 3609 MHz; Calibrated: 2021/6/23
- Sensor-Surface: 1.4mm (Mechanical Surface Detection)
- Electronics: DAE3 Sn528; Calibrated: 2021/7/26
- Phantom: ELI v4.0_Mid; Type: QDOVA001AA; Serial: TP:1026
- Measurement SW: DASY52, Version 52.10 (4); SEMCAD X Version 14.6.14 (7483)

Area Scan (71x91x1): Interpolated grid: dx=1.200 mm, dy=1.200 mm

Maximum value of SAR (interpolated) = 2.28 W/kg

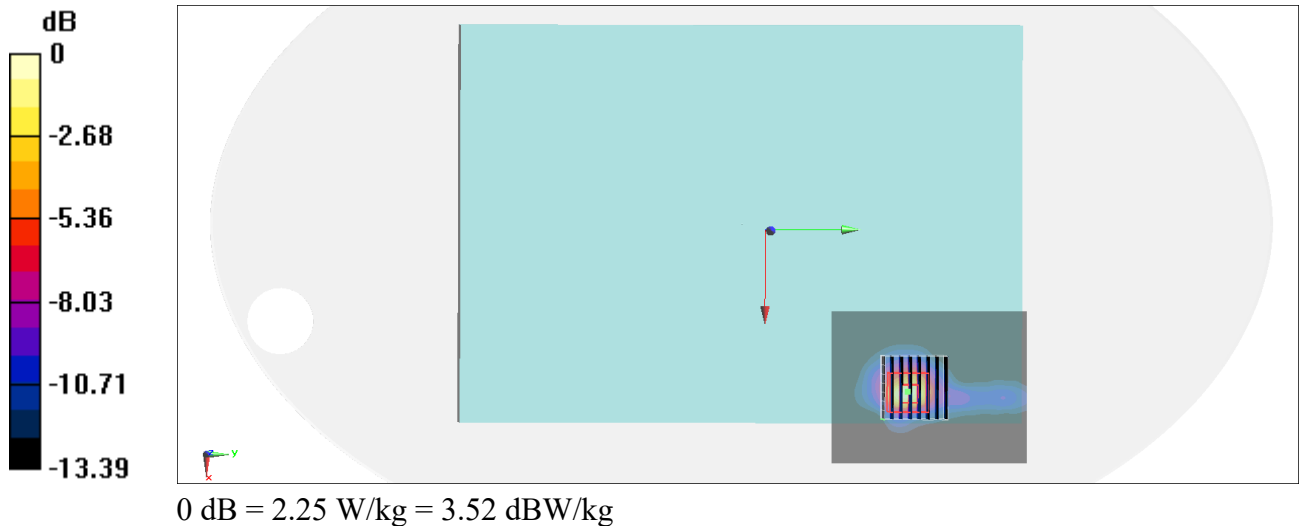
Zoom Scan (8x8x8)/Cube 0: Measurement grid: dx=5mm, dy=5mm, dz=1.4mm

Reference Value = 15.01 V/m; Power Drift = -0.08 dB

Peak SAR (extrapolated) = 4.32 W/kg

SAR(1 g) = 0.981 W/kg; SAR(10 g) = 0.379 W/kg

Maximum value of SAR (measured) = 2.25 W/kg



#16_FR1 n5_20M_BPSK_50_28_Bottom Face_0mm_Ch167300

Communication System: FR1; Frequency: 836.5 MHz; Duty Cycle: 1:1

Medium: HSL_850_211020 Medium parameters used: $f = 836.5$ MHz; $\sigma = 0.938$ S/m; $\epsilon_r = 42.68$; $\rho = 1000$ kg/m³

Ambient Temperature : 23.5 °C; Liquid Temperature : 22.5 °C

DASY5 Configuration:

- Probe: EX3DV4 - SN7439; ConvF(9.95, 9.95, 9.95) @ 836.5 MHz; Calibrated: 2021/2/23
- Sensor-Surface: 1.4mm (Mechanical Surface Detection)
- Electronics: DAE4 Sn376; Calibrated: 2020/11/23
- Phantom: ELI V8.0 (20deg probe tilt); Type: QD OVA 004 AA; Serial: 2055
- Measurement SW: DASY52, Version 52.10 (4); SEMCAD X Version 14.6.14 (7501)

Area Scan (61x101x1): Interpolated grid: dx=1.500 mm, dy=1.500 mm

Maximum value of SAR (interpolated) = 2.12 W/kg

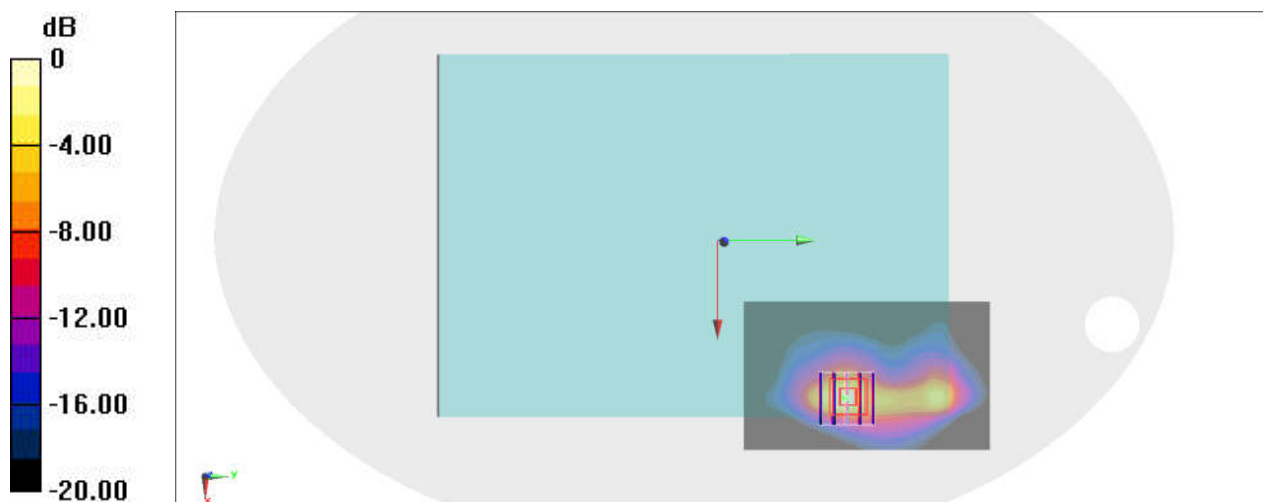
Zoom Scan (5x5x7)/Cube 0: Measurement grid: dx=8mm, dy=8mm, dz=5mm

Reference Value = 32.11 V/m; Power Drift = -0.02 dB

Peak SAR (extrapolated) = 2.64 W/kg

SAR(1 g) = 0.977 W/kg; SAR(10 g) = 0.409 W/kg

Maximum value of SAR (measured) = 1.95 W/kg



0 dB = 1.95 W/kg = 2.90 dBW/kg

#17_FR1_n7_20M_BPSK_50_28_Edge_4_0mm_Ch512000

Communication System: FR1; Frequency: 2560 MHz; Duty Cycle: 1:1

Medium: HSL_2600_211221 Medium parameters used: $f = 2560$ MHz; $\sigma = 1.879$ S/m; $\epsilon_r = 37.962$; $\rho = 1000$ kg/m³

Ambient Temperature : 23.5 °C ; Liquid Temperature : 22.5 °C

DASY5 Configuration:

- Probe: EX3DV4 - SN3578; ConvF(7.22, 7.22, 7.22) @ 2560 MHz; Calibrated: 2021/6/23
- Sensor-Surface: 1.4mm (Mechanical Surface Detection)
- Electronics: DAE3 Sn528; Calibrated: 2021/7/26
- Phantom: ELI v5.0_Left; Type: QDOVA002AA; Serial: TP:1191
- Measurement SW: DASY52, Version 52.10 (4); SEMCAD X Version 14.6.14 (7483)

Area Scan (71x111x1): Interpolated grid: dx=1.200 mm, dy=1.200 mm

Maximum value of SAR (interpolated) = 2.16 W/kg

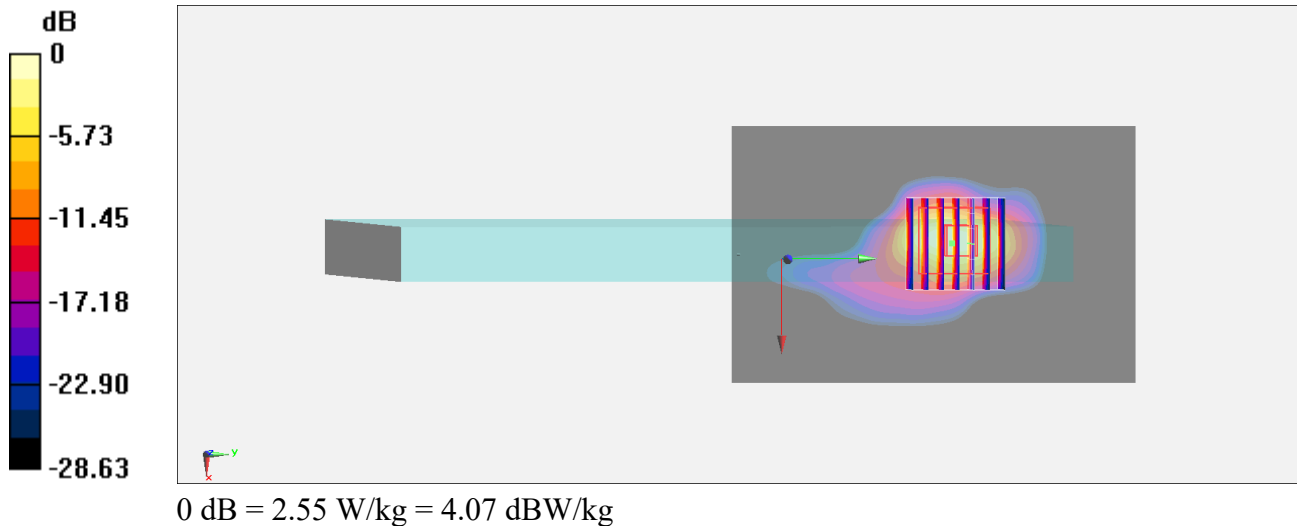
Zoom Scan (7x7x7)/Cube 0: Measurement grid: dx=5mm, dy=5mm, dz=5mm

Reference Value = 7.933 V/m; Power Drift = -0.04 dB

Peak SAR (extrapolated) = 3.84 W/kg

SAR(1 g) = 1.02 W/kg; SAR(10 g) = 0.353 W/kg

Maximum value of SAR (measured) = 2.55 W/kg



#18_FR1_n25_20M_BPSK_50_28_Bottom Face_0mm_Ch381000

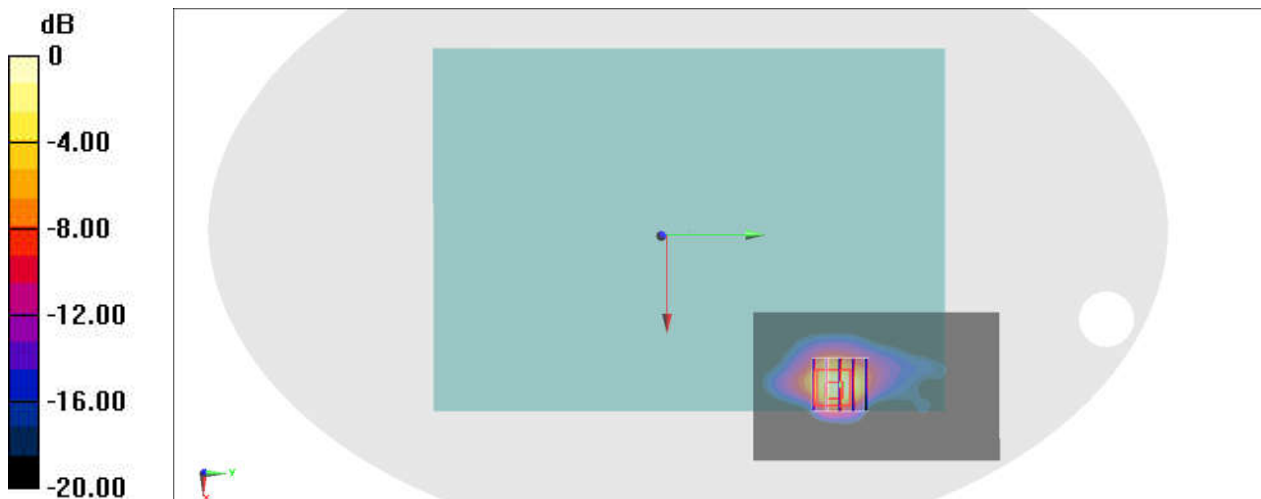
Communication System: FR1; Frequency: 1905 MHz; Duty Cycle: 1:1
Medium: HSL_1900_211021 Medium parameters used: $f = 1905 \text{ MHz}$; $\sigma = 1.438 \text{ S/m}$; $\epsilon_r = 39.489$;
 $\rho = 1000 \text{ kg/m}^3$
Ambient Temperature : $23.5 \text{ }^\circ\text{C}$; Liquid Temperature : $22.5 \text{ }^\circ\text{C}$

DASY5 Configuration:

- Probe: EX3DV4 - SN7439; ConvF(8.24, 8.24, 8.24) @ 1905 MHz; Calibrated: 2021/2/23
- Sensor-Surface: 1.4mm (Mechanical Surface Detection)
- Electronics: DAE4 Sn376; Calibrated: 2020/11/23
- Phantom: ELI V8.0 (20deg probe tilt); Type: QD OVA 004 AA; Serial: 2055
- Measurement SW: DASY52, Version 52.10 (4); SEMCAD X Version 14.6.14 (7501)

Area Scan (61x101x1): Interpolated grid: $dx=1.500 \text{ mm}$, $dy=1.500 \text{ mm}$
Maximum value of SAR (interpolated) = 1.39 W/kg

Zoom Scan (5x5x7)/Cube 0: Measurement grid: $dx=8\text{mm}$, $dy=8\text{mm}$, $dz=5\text{mm}$
Reference Value = 26.18 V/m ; Power Drift = -0.01 dB
Peak SAR (extrapolated) = 2.09 W/kg
SAR(1 g) = 0.885 W/kg ; SAR(10 g) = 0.393 W/kg
Maximum value of SAR (measured) = 1.40 W/kg



0 dB = $1.40 \text{ W/kg} = 1.46 \text{ dBW/kg}$

#19_FR1_n30_10M_BPSK_50_0_Bottom Face_0mm_Ch462000

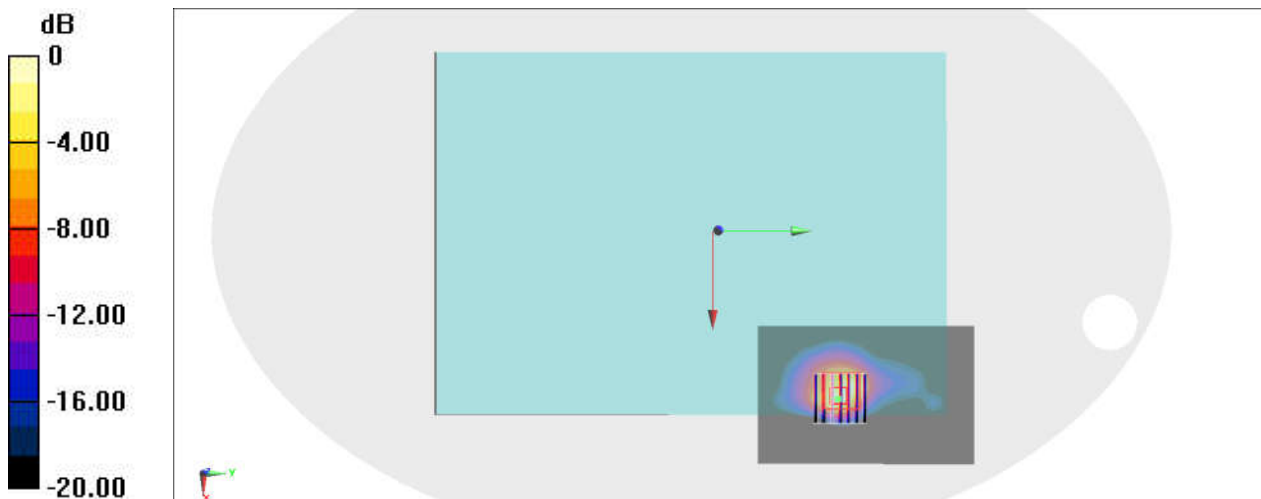
Communication System: FR1; Frequency: 2310 MHz; Duty Cycle: 1:1
Medium: HSL_2300_211022 Medium parameters used: $f = 2310$ MHz; $\sigma = 1.641$ S/m; $\epsilon_r = 39.388$;
 $\rho = 1000$ kg/m³
Ambient Temperature : 23.5 °C; Liquid Temperature : 22.5 °C

DASY5 Configuration:

- Probe: EX3DV4 - SN7439; ConvF(7.82, 7.82, 7.82) @ 2310 MHz; Calibrated: 2021/2/23
- Sensor-Surface: 1.4mm (Mechanical Surface Detection)
- Electronics: DAE4 Sn376; Calibrated: 2020/11/23
- Phantom: ELI V8.0 (20deg probe tilt); Type: QD OVA 004 AA; Serial: 2055
- Measurement SW: DASY52, Version 52.10 (4); SEMCAD X Version 14.6.14 (7501)

Area Scan (71x111x1): Interpolated grid: dx=1.200 mm, dy=1.200 mm
Maximum value of SAR (interpolated) = 1.83 W/kg

Zoom Scan (7x7x7)/Cube 0: Measurement grid: dx=5mm, dy=5mm, dz=5mm
Reference Value = 24.16 V/m; Power Drift = -0.08 dB
Peak SAR (extrapolated) = 2.32 W/kg
SAR(1 g) = 0.920 W/kg; SAR(10 g) = 0.405 W/kg
Maximum value of SAR (measured) = 1.77 W/kg



0 dB = 1.77 W/kg = 2.48 dBW/kg

#20_FR1 n66_40M_BPSK_1_108_Edge 4_0mm_Ch349000

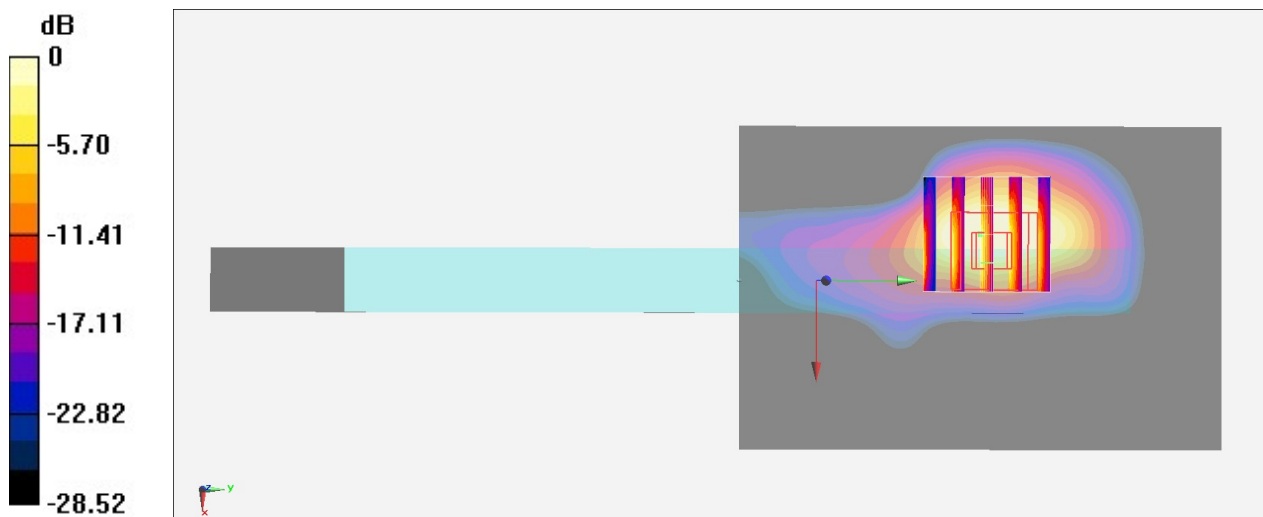
Communication System: FR1; Frequency: 1745 MHz; Duty Cycle: 1:1
Medium: HSL_1750_211028 Medium parameters used: $f = 1745$ MHz; $\sigma = 1.348$ S/m; $\epsilon_r = 39.679$;
 $\rho = 1000$ kg/m³
Ambient Temperature : 23.2 °C ; Liquid Temperature : 22.2 °C

DASY5 Configuration:

- Probe: EX3DV4 - SN3898; ConvF(8.51, 8.51, 8.51) @ 1745 MHz; Calibrated: 2021/6/24
- Sensor-Surface: 1.4mm (Mechanical Surface Detection)
- Electronics: DAE4 Sn1647; Calibrated: 2021/1/7
- Phantom: ELI v4.0_Right; Type: QDOVA001BB; Serial: TP:1025
- Measurement SW: DASY52, Version 52.10 (4); SEMCAD X Version 14.6.14 (7501)

Area Scan (61x91x1): Interpolated grid: dx=1.500 mm, dy=1.500 mm
Maximum value of SAR (interpolated) = 2.35 W/kg

Zoom Scan (5x5x7)/Cube 0: Measurement grid: dx=8mm, dy=8mm, dz=5mm
Reference Value = 23.54 V/m; Power Drift = -0.19 dB
Peak SAR (extrapolated) = 2.17 W/kg
SAR(1 g) = 0.900 W/kg; SAR(10 g) = 0.377 W/kg
Maximum value of SAR (measured) = 1.49 W/kg



0 dB = 1.49 W/kg = 1.73 dBW/kg

#21_FR1 n71_20M_BPSK_100_0_Edge 2_0mm_Ch136100

Communication System: FR1; Frequency: 680.5 MHz; Duty Cycle: 1:1

Medium: HSL_750_211020 Medium parameters used: $f = 680.5$ MHz; $\sigma = 0.879$ S/m; $\epsilon_r = 43.398$;
 $\rho = 1000$ kg/m³

Ambient Temperature : 23.5 °C; Liquid Temperature : 22.5 °C

DASY5 Configuration:

- Probe: EX3DV4 - SN7439; ConvF(10.26, 10.26, 10.26) @ 680.5 MHz; Calibrated: 2021/2/23
- Sensor-Surface: 1.4mm (Mechanical Surface Detection)
- Electronics: DAE4 Sn376; Calibrated: 2020/11/23
- Phantom: ELI V8.0 (20deg probe tilt); Type: QD OVA 004 AA; Serial: 2055
- Measurement SW: DASY52, Version 52.10 (4); SEMCAD X Version 14.6.14 (7501)

Area Scan (51x91x1): Interpolated grid: dx=1.500 mm, dy=1.500 mm

Maximum value of SAR (interpolated) = 3.17 W/kg

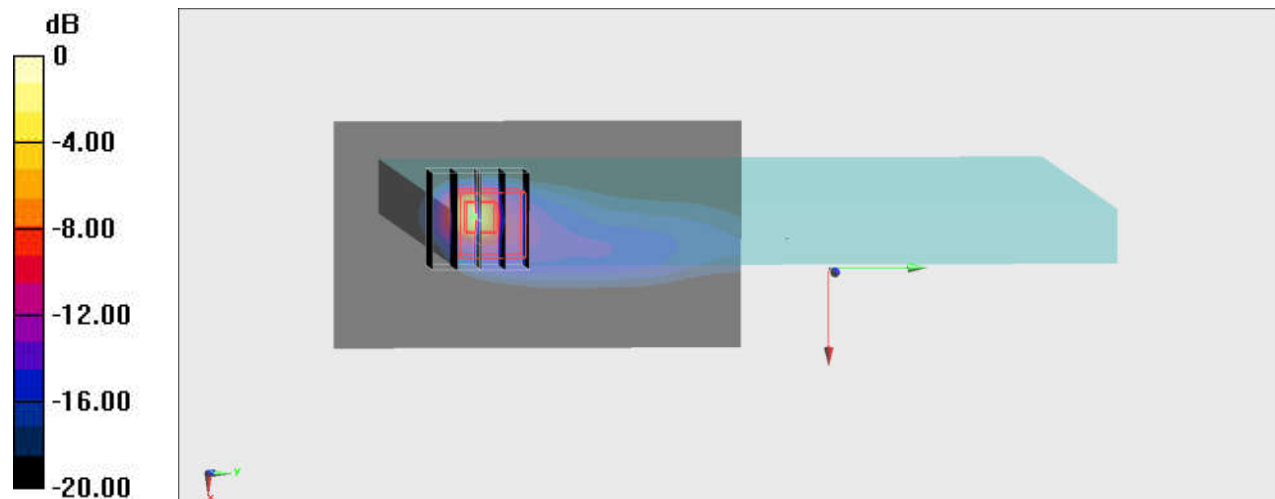
Zoom Scan (5x5x7)/Cube 0: Measurement grid: dx=8mm, dy=8mm, dz=5mm

Reference Value = 12.36 V/m; Power Drift = -0.02 dB

Peak SAR (extrapolated) = 6.17 W/kg

SAR(1 g) = 1.04 W/kg; SAR(10 g) = 0.261 W/kg

Maximum value of SAR (measured) = 4.67 W/kg



#22_FR1 n41_80M_BPSK_1_108_Bottom Face_0mm_Ch518598

Communication System: FR1 ; Frequency: 2592.99 MHz; Duty Cycle: 1:1

Medium: HSL_2600_211221 Medium parameters used : $f = 2592.99$ MHz; $\sigma = 1.945$ S/m; $\epsilon_r = 37.694$; $\rho = 1000$ kg/m³

Ambient Temperature : 23.5 °C ; Liquid Temperature : 22.5 °C

DASY5 Configuration:

- Probe: EX3DV4 - SN3578; ConvF(7.22, 7.22, 7.22) @ 2592.99 MHz; Calibrated: 2021/6/23
- Sensor-Surface: 1.4mm (Mechanical Surface Detection)
- Electronics: DAE3 Sn528; Calibrated: 2021/7/26
- Phantom: ELI v5.0_Left; Type: QDOVA002AA; Serial: TP:1191
- Measurement SW: DASY52, Version 52.10 (4); SEMCAD X Version 14.6.14 (7483)

Area Scan (71x101x1): Interpolated grid: dx=1.200 mm, dy=1.200 mm

Maximum value of SAR (interpolated) = 1.65 W/kg

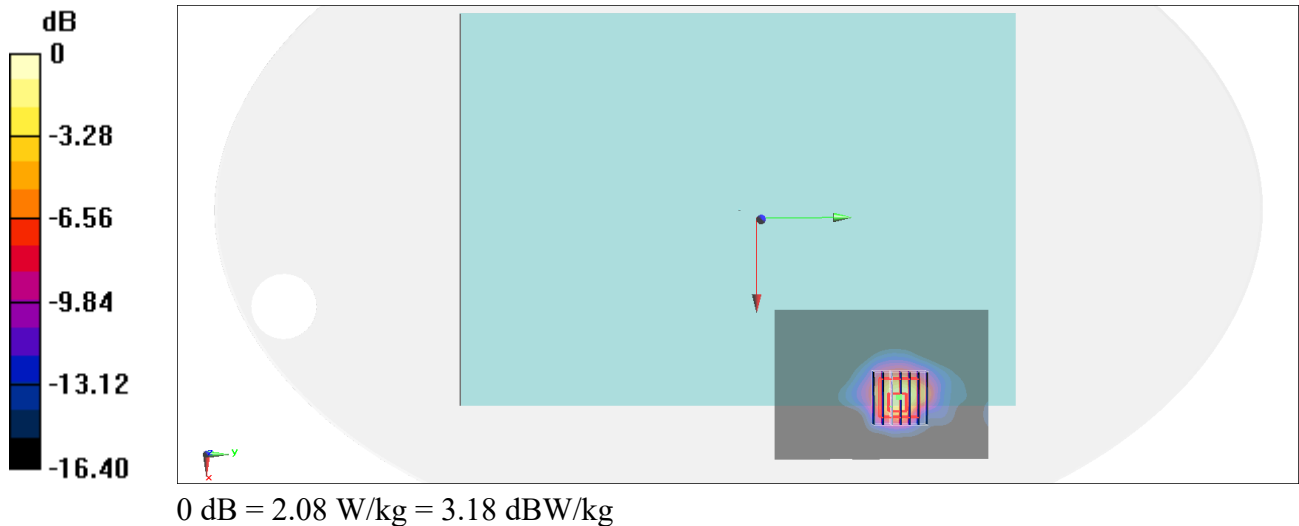
Zoom Scan (7x7x7)/Cube 0: Measurement grid: dx=5mm, dy=5mm, dz=5mm

Reference Value = 24.92 V/m; Power Drift = -0.19 dB

Peak SAR (extrapolated) = 2.98 W/kg

SAR(1 g) = 1.03 W/kg; SAR(10 g) = 0.433 W/kg

Maximum value of SAR (measured) = 2.08 W/kg



#23_FR1_n77_100M_BPSK_1_137_Bottom Face_0mm_Ch656000

Communication System: FR1; Frequency: 3840 MHz; Duty Cycle: 1:1

Medium: HSL_3300-4200_211216 Medium parameters used: $f = 3840$ MHz; $\sigma = 3.353$ S/m; $\epsilon_r = 38.089$; $\rho = 1000$ kg/m³

Ambient Temperature : 23.5 °C ; Liquid Temperature : 22.5 °C

DASY5 Configuration:

- Probe: EX3DV4 - SN3578; ConvF(6.81, 6.81, 6.81) @ 3840 MHz; Calibrated: 2021/6/23
- Sensor-Surface: 1.4mm (Mechanical Surface Detection)
- Electronics: DAE3 Sn528; Calibrated: 2021/7/26
- Phantom: ELI v4.0_Mid; Type: QDOVA001AA; Serial: TP:1026
- Measurement SW: DASY52, Version 52.10 (4); SEMCAD X Version 14.6.14 (7483)

Area Scan (71x91x1): Interpolated grid: dx=1.200 mm, dy=1.200 mm

Maximum value of SAR (interpolated) = 3.13 W/kg

Zoom Scan (8x8x8)/Cube 0: Measurement grid: dx=5mm, dy=5mm, dz=1.4mm

Reference Value = 18.66 V/m; Power Drift = -0.15 dB

Peak SAR (extrapolated) = 3.72 W/kg

SAR(1 g) = 0.978 W/kg; SAR(10 g) = 0.405 W/kg

Maximum value of SAR (measured) = 2.06 W/kg

