

01_WCDMA II_RMC 12.2Kbps_Bottom Face_0mm_Ch9538;Speed

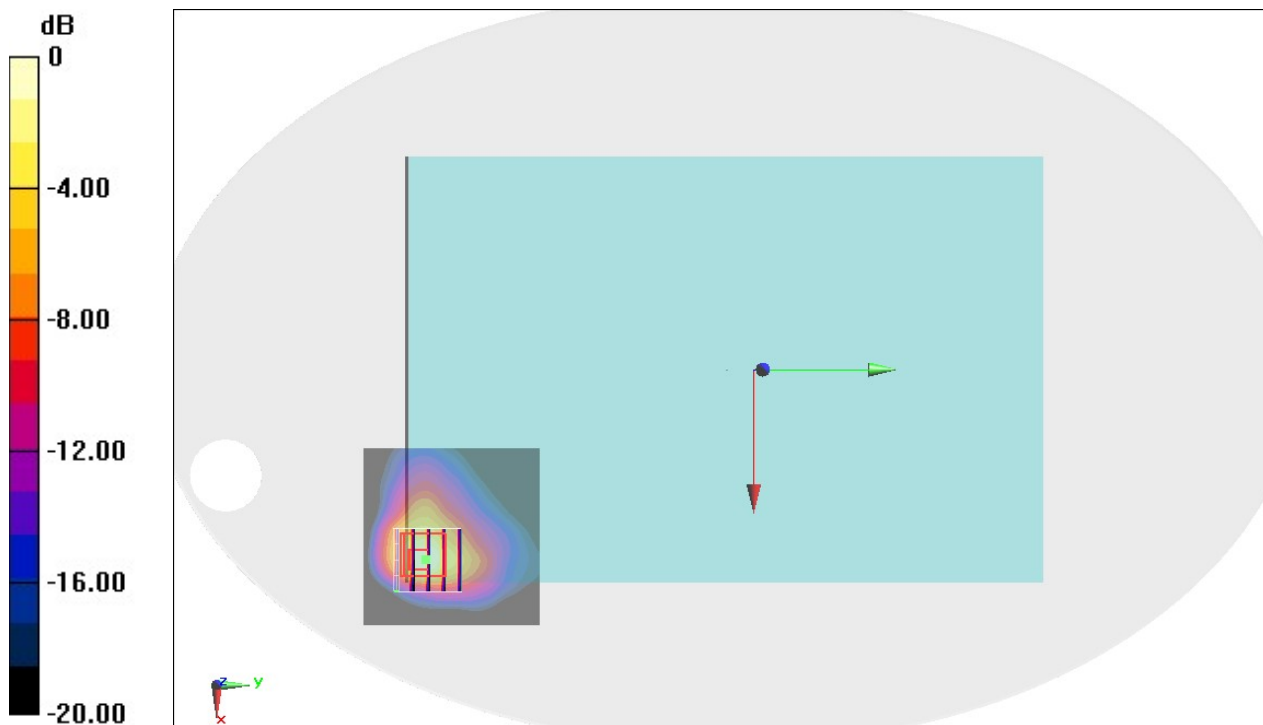
Communication System: WCDMA; Frequency: 1907.6 MHz; Duty Cycle: 1:1
Medium: HSL_1900_191028 Medium parameters used: $f = 1908 \text{ MHz}$; $\sigma = 1.417 \text{ S/m}$; $\epsilon_r = 40.674$;
 $\rho = 1000 \text{ kg/m}^3$
Ambient Temperature : $23.6 \text{ }^\circ\text{C}$; Liquid Temperature : $22.6 \text{ }^\circ\text{C}$

DASY5 Configuration

- Probe: ES3DV3 - SN3270; ConvF(5.2, 5.2, 5.2) @ 1907.6 MHz; Calibrated: 2019/9/25
- Sensor-Surface: 3mm (Mechanical Surface Detection)
- Electronics: DAE3 Sn577; Calibrated: 2019/9/17
- Phantom: ELI V5.0; Type: QD OVA 002 Ax; Serial: 1191
- Measurement SW: DASY52, Version 52.10 (2); SEMCAD X Version 14.6.12 (7450)

Area Scan (61x61x1): Interpolated grid: $dx=1.500 \text{ mm}$, $dy=1.500 \text{ mm}$
Maximum value of SAR (interpolated) = 1.48 W/kg

Zoom Scan (5x5x7)/Cube 0: Measurement grid: $dx=8\text{mm}$, $dy=8\text{mm}$, $dz=5\text{mm}$
Reference Value = 23.05 V/m ; Power Drift = -0.04 dB
Peak SAR (extrapolated) = 2.40 W/kg
SAR(1 g) = 0.969 W/kg ; SAR(10 g) = 0.422 W/kg
Maximum value of SAR (measured) = 1.22 W/kg



0 dB = $1.22 \text{ W/kg} = 0.86 \text{ dBW/kg}$

#02_WCDMA IV_RMC 12.2Kbps_Edge 4_10mm_Ch1312;Speed

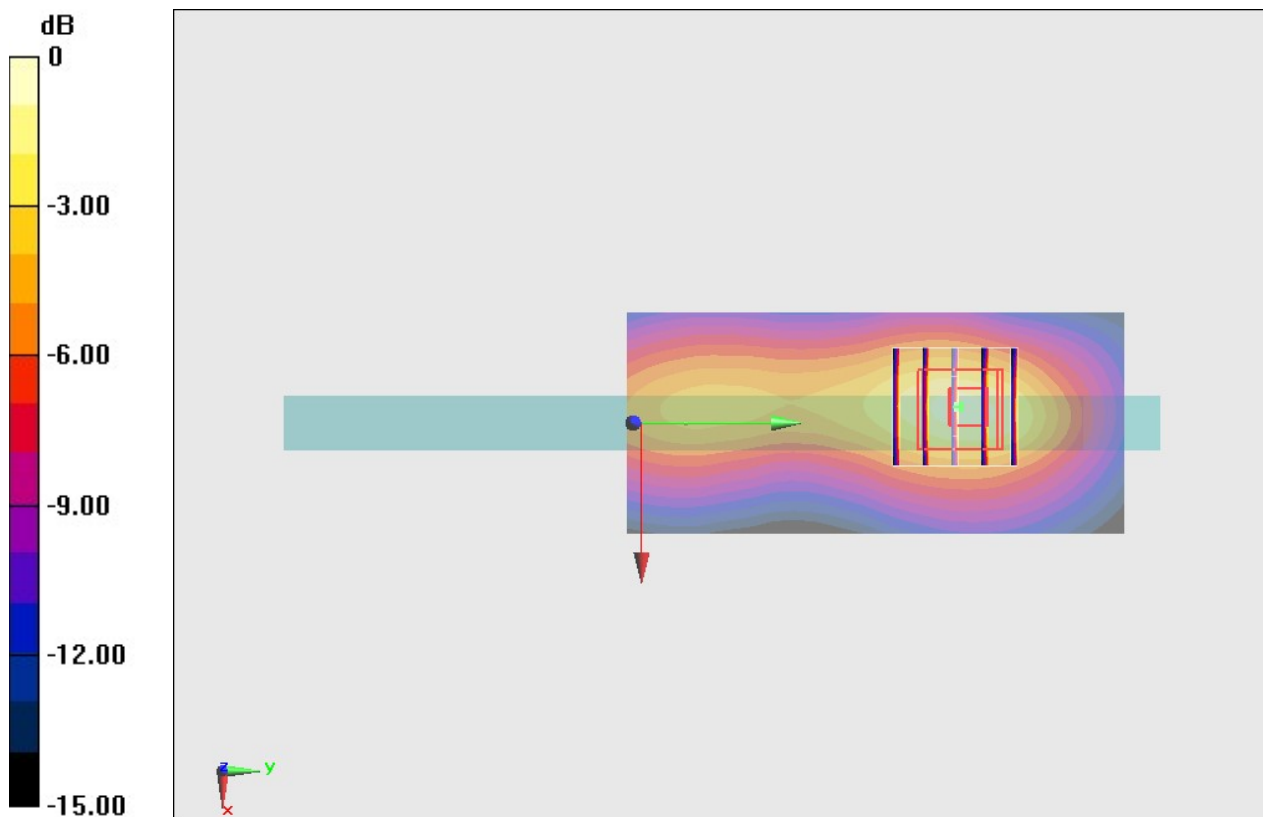
Communication System: WCDMA; Frequency: 1712.4 MHz; Duty Cycle: 1:1
Medium: HSL_1750_191114 Medium parameters used : $f = 1712.4$ MHz; $\sigma = 1.325$ S/m; $\epsilon_r = 41.307$; $\rho = 1000$ kg/m³
Ambient Temperature : 23.4 °C ; Liquid Temperature : 22.4 °C

DASY5 Configuration

- Probe: ES3DV3 - SN3270; ConvF(5.41, 5.41, 5.41) @ 1712.4 MHz; Calibrated: 2019/9/25
- Sensor-Surface: 3mm (Mechanical Surface Detection)
- Electronics: DAE3 Sn577; Calibrated: 2019/9/17
- Phantom: ELI V5.0; Type: QD OVA 002 Ax; Serial: 1191
- Measurement SW: DASY52, Version 52.10 (2); SEMCAD X Version 14.6.12 (7450)

Area Scan (41x91x1): Interpolated grid: dx=1.500 mm, dy=1.500 mm
Maximum value of SAR (interpolated) = 1.11 W/kg

Zoom Scan (5x5x7)/Cube 0: Measurement grid: dx=8mm, dy=8mm, dz=5mm
Reference Value = 30.50 V/m; Power Drift = -0.08 dB
Peak SAR (extrapolated) = 1.83 W/kg
SAR(1 g) = 1.04 W/kg; SAR(10 g) = 0.559 W/kg
Maximum value of SAR (measured) = 1.29 W/kg



0 dB = 1.29 W/kg = 1.11 dBW/kg

#03_WCDMA V_RMC 12.2Kbps_Bottom Face_0mm_Ch4233;AMP

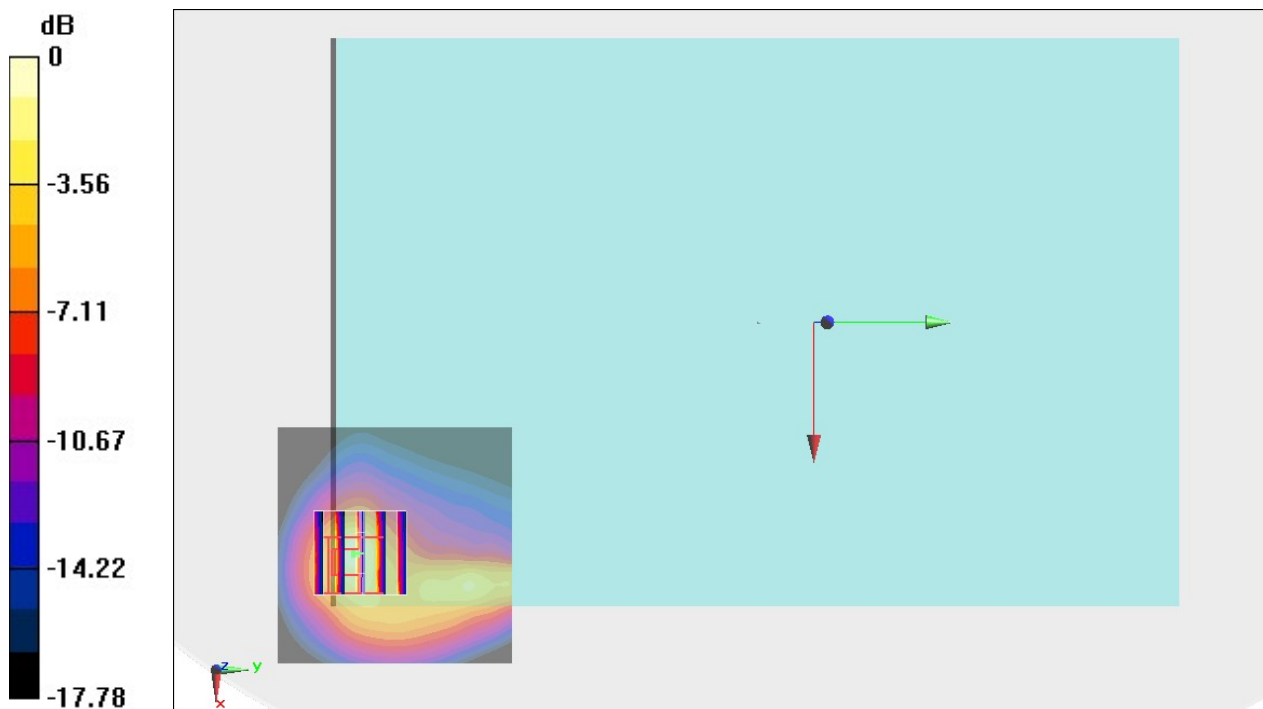
Communication System: WCDMA ; Frequency: 846.6 MHz;Duty Cycle: 1:1
Medium: HSL_850_191126 Medium parameters used: $f = 847 \text{ MHz}$; $\sigma = 0.893 \text{ S/m}$; $\epsilon_r = 41.828$; $\rho = 1000 \text{ kg/m}^3$
Ambient Temperature : $23.5 \text{ }^\circ\text{C}$; Liquid Temperature : $22.5 \text{ }^\circ\text{C}$

DASY5 Configuration

- Probe: ES3DV3 - SN3270;ConvF(6.43, 6.43, 6.43) @ 846.6 MHz;Calibrated: 2019/9/25
- Sensor-Surface: 3mm (Mechanical Surface Detection)
- Electronics: DAE3 Sn577; Calibrated: 2019/9/17
- Phantom: ELI V5.0; Type: QD OVA 002 Ax; Serial: 1191
- Measurement SW: DASY52, Version 52.10 (2); SEMCAD X Version 14.6.12 (7450)

Area Scan (61x61x1): Interpolated grid: $dx=1.500 \text{ mm}$, $dy=1.500 \text{ mm}$
Maximum value of SAR (interpolated) = 1.06 W/kg

Zoom Scan (5x5x7)/Cube 0: Measurement grid: $dx=8\text{mm}$, $dy=8\text{mm}$, $dz=5\text{mm}$
Reference Value = 34.64 V/m ; Power Drift = 0.00 dB
Peak SAR (extrapolated) = 2.74 W/kg
SAR(1 g) = 0.957 W/kg ; SAR(10 g) = 0.409 W/kg
Maximum value of SAR (measured) = 1.11 W/kg



0 dB = 1.11 W/kg = 0.45 dBW/kg

#04_LTE Band 7_20M_QPSK_1_0_Edge 4_10mm_Ch21100;AMP

Communication System: LTE; Frequency: 2535 MHz;Duty Cycle: 1:1

Medium: HSL_2600_191115 Medium parameters used : $f = 2535$ MHz; $\sigma = 1.878$ S/m; $\epsilon_r = 38.562$;

$\rho = 1000$ kg/m³

Ambient Temperature : 23.4 °C ; Liquid Temperature : 22.4 °C

DASY5 Configuration

- Probe: ES3DV3 - SN3270;ConvF(4.51, 4.51, 4.51) @ 2535 MHz;Calibrated: 2019/9/25
- Sensor-Surface: 3mm (Mechanical Surface Detection)
- Electronics: DAE3 Sn577; Calibrated: 2019/9/17
- Phantom: ELI V5.0; Type: QD OVA 002 Ax; Serial: 1191
- Measurement SW: DASY52, Version 52.10 (2); SEMCAD X Version 14.6.12 (7450)

Area Scan (51x91x1): Interpolated grid: dx=1.200 mm, dy=1.200 mm

Maximum value of SAR (interpolated) = 1.63 W/kg

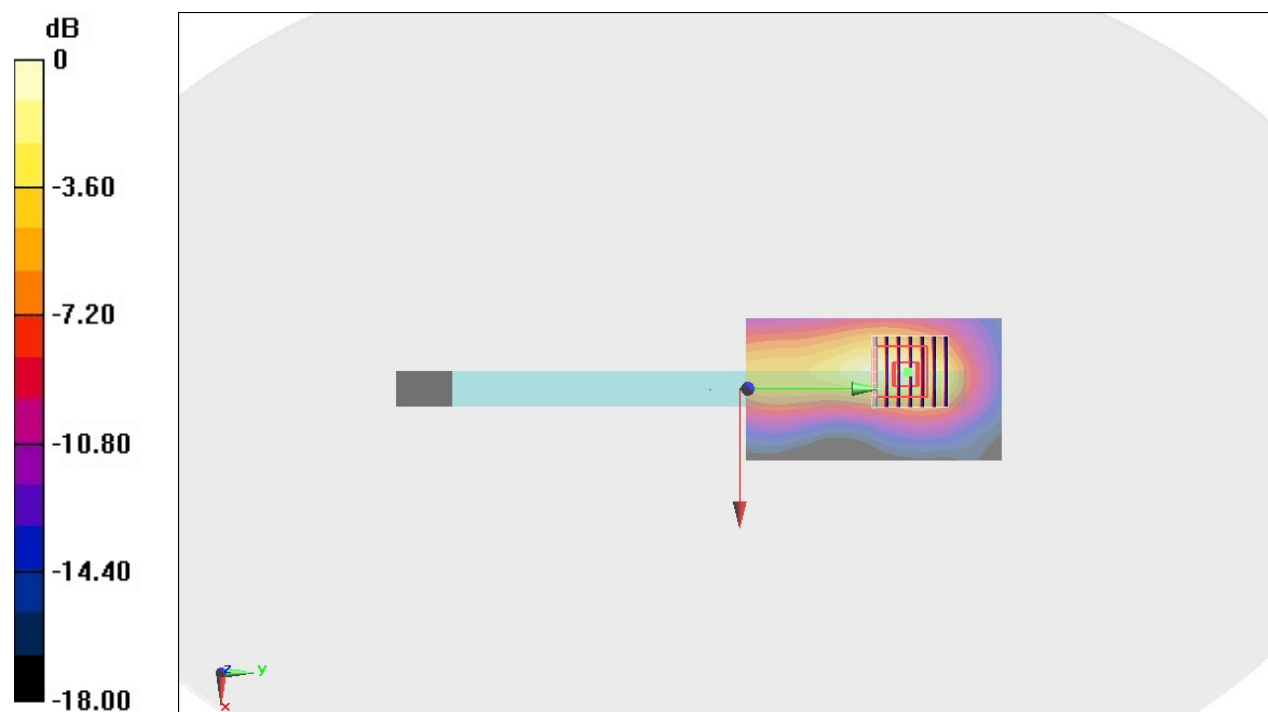
Zoom Scan (7x7x7)/Cube 0: Measurement grid: dx=5mm, dy=5mm, dz=5mm

Reference Value = 26.38 V/m; Power Drift = -0.18 dB

Peak SAR (extrapolated) = 2.55 W/kg

SAR(1 g) = 1.19 W/kg; SAR(10 g) = 0.547 W/kg

Maximum value of SAR (measured) = 1.58 W/kg



0 dB = 1.58 W/kg = 1.99 dBW/kg

#05_LTE Band 12_10M_QPSK_50_0_Edge 4_0mm_Ch23095;AMP

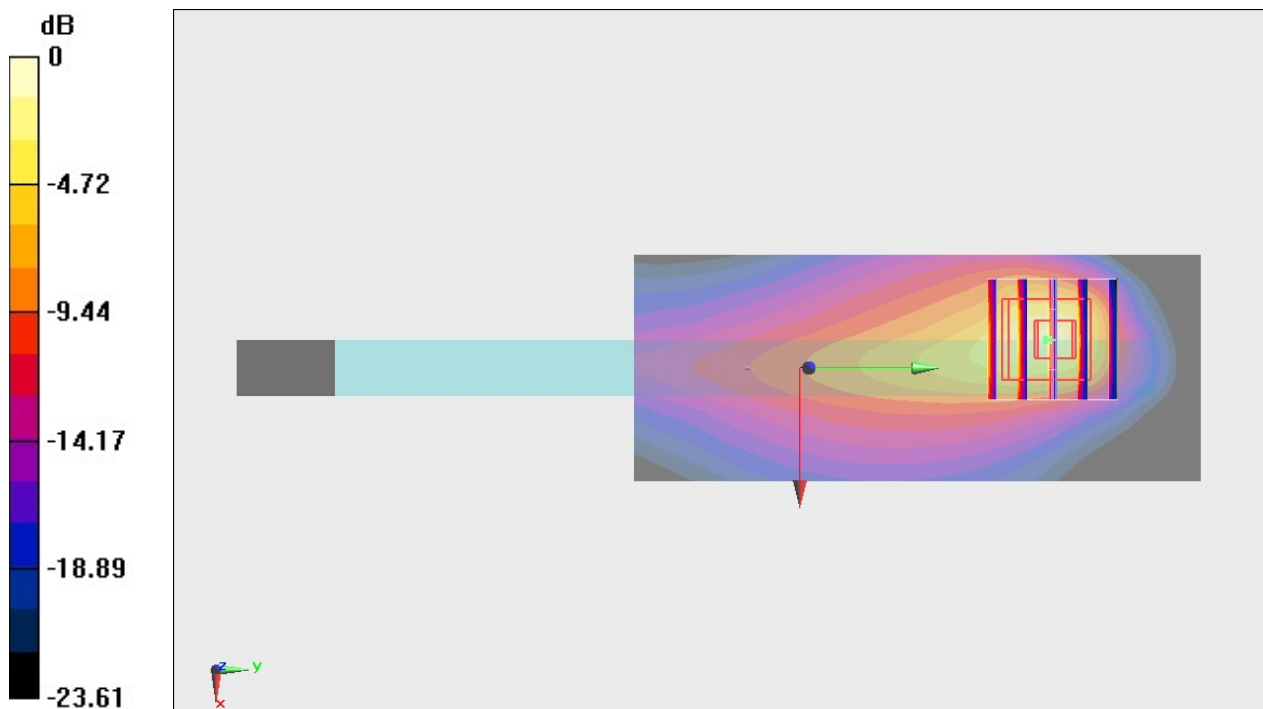
Communication System: LTE ; Frequency: 707.5 MHz;Duty Cycle: 1:1
Medium: HSL_750_191125 Medium parameters used : $f = 707.5$ MHz; $\sigma = 0.852$ S/m; $\epsilon_r = 43.892$;
 $\rho = 1000$ kg/m³
Ambient Temperature : 23.5 °C ; Liquid Temperature : 22.5 °C

DASY5 Configuration

- Probe: ES3DV3 - SN3270;ConvF(6.55, 6.55, 6.55) @ 707.5 MHz;Calibrated: 2019/9/25
- Sensor-Surface: 3mm (Mechanical Surface Detection)
- Electronics: DAE3 Sn577; Calibrated: 2019/9/17
- Phantom: ELI V5.0; Type: QD OVA 002 Ax; Serial: 1191
- Measurement SW: DASY52, Version 52.10 (2); SEMCAD X Version 14.6.12 (7450)

Area Scan (41x101x1): Interpolated grid: dx=1.500 mm, dy=1.500 mm
Maximum value of SAR (interpolated) = 1.12 W/kg

Zoom Scan (5x5x7)/Cube 0: Measurement grid: dx=8mm, dy=8mm, dz=5mm
Reference Value = 24.30 V/m; Power Drift = -0.13 dB
Peak SAR (extrapolated) = 4.79 W/kg
SAR(1 g) = 0.978 W/kg; SAR(10 g) = 0.346 W/kg
Maximum value of SAR (measured) = 1.44 W/kg



0 dB = 1.44 W/kg = 1.58 dBW/kg

#06_LTE Band 13_10M_QPSK_25_0_Edge 4_0mm_Ch23230;AMP

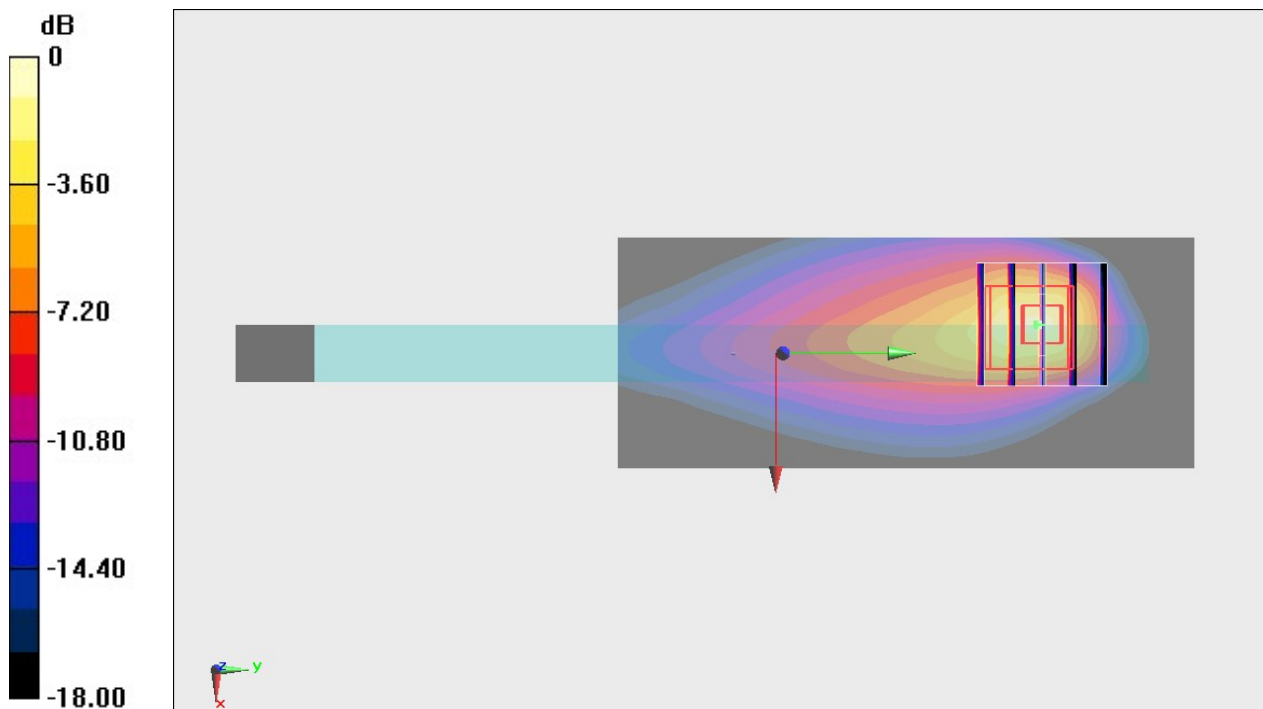
Communication System: LTE ; Frequency: 782 MHz;Duty Cycle: 1:1
Medium: HSL_750_191125 Medium parameters used: $f = 782 \text{ MHz}$; $\sigma = 0.924 \text{ S/m}$; $\epsilon_r = 42.86$; $\rho = 1000 \text{ kg/m}^3$
Ambient Temperature : $23.5 \text{ }^\circ\text{C}$; Liquid Temperature : $22.5 \text{ }^\circ\text{C}$

DASY5 Configuration

- Probe: ES3DV3 - SN3270;ConvF(6.55, 6.55, 6.55) @ 782 MHz;Calibrated: 2019/9/25
- Sensor-Surface: 3mm (Mechanical Surface Detection)
- Electronics: DAE3 Sn577; Calibrated: 2019/9/17
- Phantom: ELI V5.0; Type: QD OVA 002 Ax; Serial: 1191
- Measurement SW: DASY52, Version 52.10 (2); SEMCAD X Version 14.6.12 (7450)

Area Scan (41x101x1): Interpolated grid: $dx=1.500 \text{ mm}$, $dy=1.500 \text{ mm}$
Maximum value of SAR (interpolated) = 0.979 W/kg

Zoom Scan (5x5x7)/Cube 0: Measurement grid: $dx=8\text{mm}$, $dy=8\text{mm}$, $dz=5\text{mm}$
Reference Value = 24.39 V/m ; Power Drift = -0.02 dB
Peak SAR (extrapolated) = 3.44 W/kg
SAR(1 g) = 0.816 W/kg ; SAR(10 g) = 0.316 W/kg
Maximum value of SAR (measured) = 1.19 W/kg



0 dB = 1.19 W/kg = 0.76 dBW/kg

#07_LTE Band 14_10M_QPSK_25_0_Bottom Face_0mm_Ch23330;AMP

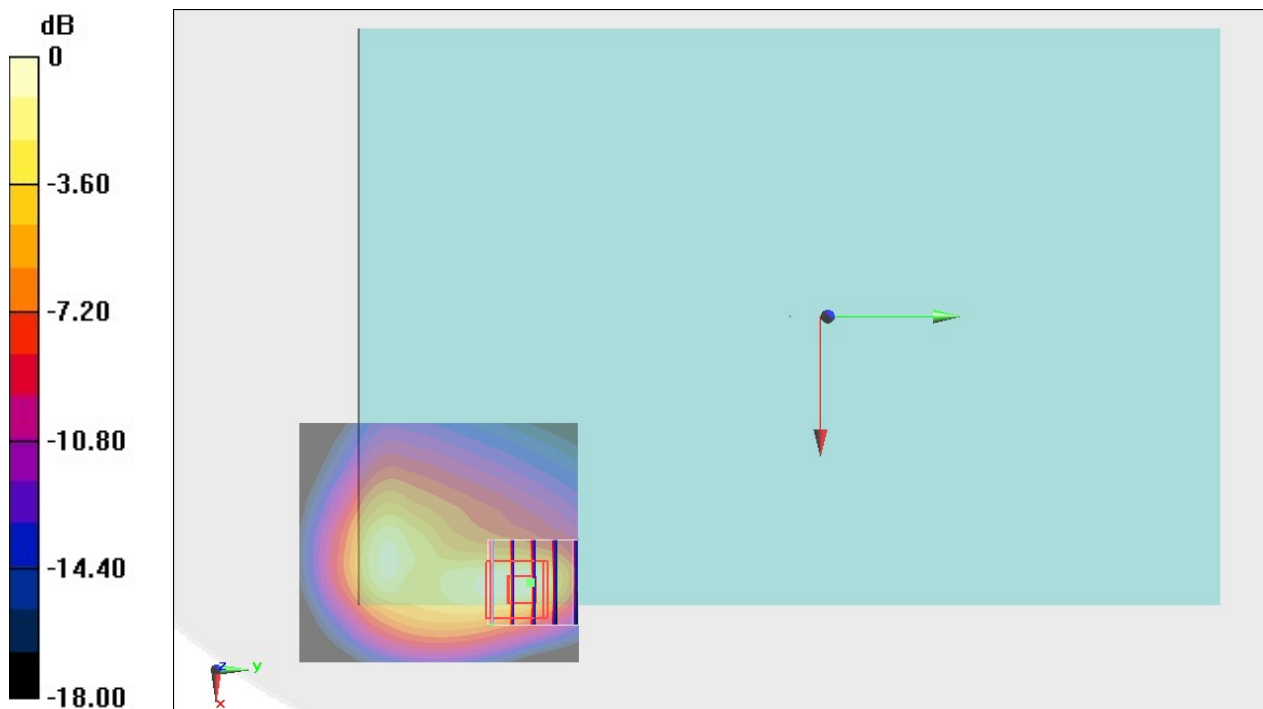
Communication System: LTE ; Frequency: 793 MHz;Duty Cycle: 1:1
Medium: HSL_750_191126 Medium parameters used: $f = 793$ MHz; $\sigma = 0.927$ S/m; $\epsilon_r = 42.407$; $\rho = 1000$ kg/m³
Ambient Temperature : 23.5 °C ; Liquid Temperature : 22.5 °C

DASY5 Configuration

- Probe: ES3DV3 - SN3270;ConvF(6.55, 6.55, 6.55) @ 793 MHz;Calibrated: 2019/9/25
- Sensor-Surface: 3mm (Mechanical Surface Detection)
- Electronics: DAE3 Sn577; Calibrated: 2019/9/17
- Phantom: ELI V5.0; Type: QD OVA 002 Ax; Serial: 1191
- Measurement SW: DASY52, Version 52.10 (2); SEMCAD X Version 14.6.12 (7450)

Area Scan (61x71x1): Interpolated grid: dx=1.500 mm, dy=1.500 mm
Maximum value of SAR (interpolated) = 1.21 W/kg

Zoom Scan (5x5x7)/Cube 0: Measurement grid: dx=8mm, dy=8mm, dz=5mm
Reference Value = 33.08 V/m; Power Drift = 0.16 dB
Peak SAR (extrapolated) = 2.71 W/kg
SAR(1 g) = 0.847 W/kg; SAR(10 g) = 0.373 W/kg
Maximum value of SAR (measured) = 1.12 W/kg



0 dB = 1.12 W/kg = 0.49 dBW/kg

#08_LTE Band 25_20M_QPSK_1_0_Bottom Face_0mm_Ch26140;AMP

Communication System: LTE ; Frequency: 1860 MHz;Duty Cycle: 1:1

Medium: HSL_1900_191028 Medium parameters used: $f = 1860$ MHz; $\sigma = 1.413$ S/m; $\epsilon_r = 40.383$; $\rho = 1000$ kg/m³

Ambient Temperature : 23.5 °C ; Liquid Temperature : 22.5 °C

DASY5 Configuration:

- Probe: EX3DV4 - SN3925; ConvF(8.35, 8.35, 8.35) @ 1860 MHz; Calibrated: 2019/9/20
- Sensor-Surface: 1.4mm (Mechanical Surface Detection)
- Electronics: DAE4 Sn1399; Calibrated: 2018/11/16
- Phantom: ELI v5.0; Type: QDOVA002AA; Serial: TP:1238
- Measurement SW: DASY52, Version 52.10 (2);SEMCAD X Version 14.6.12 (7470)

Area Scan (61x61x1): Interpolated grid: dx=1.500 mm, dy=1.500 mm

Maximum value of SAR (interpolated) = 1.71 W/kg

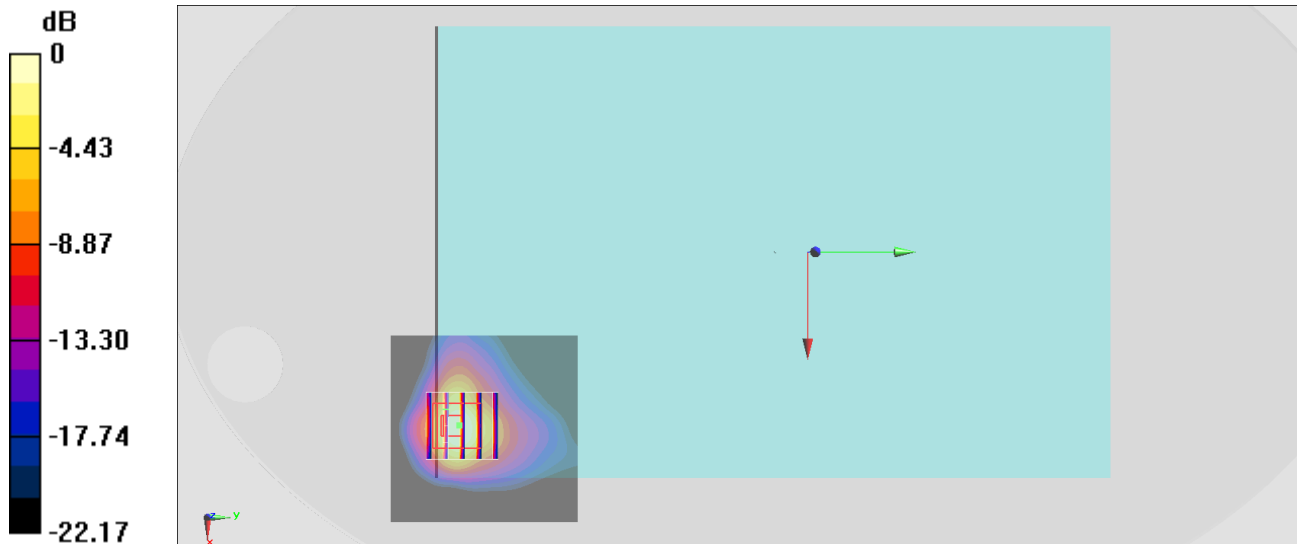
Zoom Scan (5x5x7)/Cube 0: Measurement grid: dx=8mm, dy=8mm, dz=5mm

Reference Value = 36.56 V/m; Power Drift = -0.09 dB

Peak SAR (extrapolated) = 2.36 W/kg

SAR(1 g) = 0.945 W/kg; SAR(10 g) = 0.406 W/kg

Maximum value of SAR (measured) = 1.48 W/kg



0 dB = 1.48 W/kg = 1.70 dBW/kg

#09_LTE Band 26_15M_QPSK_36_0_Bottom Face_0mm_Ch26865;AMP

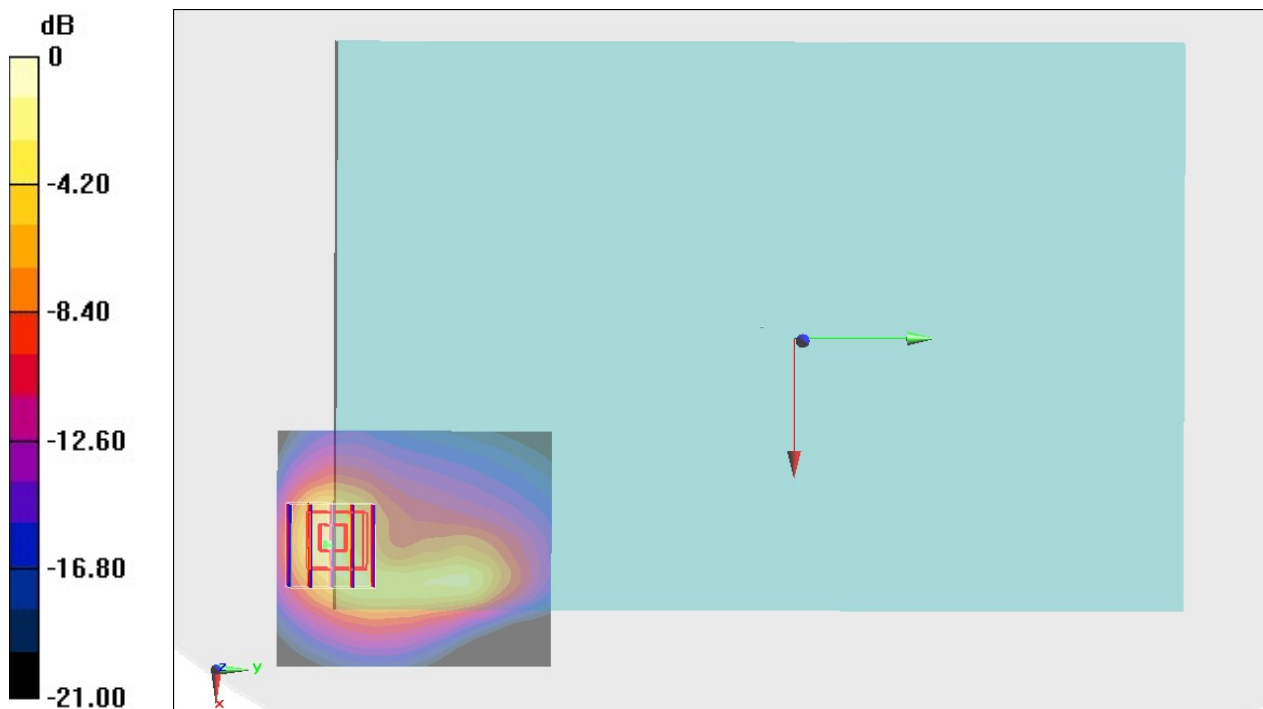
Communication System: LTE; Frequency: 831.5 MHz; Duty Cycle: 1:1
Medium: HSL_850_191127 Medium parameters used : $f = 831.5$ MHz; $\sigma = 0.893$ S/m; $\epsilon_r = 41.551$;
 $\rho = 1000$ kg/m³
Ambient Temperature : 23.5 °C ; Liquid Temperature : 22.5 °C

DASY5 Configuration

- Probe: ES3DV3 - SN3270; ConvF(6.43, 6.43, 6.43) @ 831.5 MHz; Calibrated: 2019/9/25
- Sensor-Surface: 3mm (Mechanical Surface Detection)
- Electronics: DAE3 Sn577; Calibrated: 2019/9/17
- Phantom: ELI V5.0; Type: QD OVA 002 Ax; Serial: 1191
- Measurement SW: DASY52, Version 52.10 (2); SEMCAD X Version 14.6.12 (7450)

Area Scan (61x71x1): Interpolated grid: dx=1.500 mm, dy=1.500 mm
Maximum value of SAR (interpolated) = 1.07 W/kg

Zoom Scan (5x5x7)/Cube 0: Measurement grid: dx=8mm, dy=8mm, dz=5mm
Reference Value = 31.37 V/m; Power Drift = 0.01 dB
Peak SAR (extrapolated) = 2.85 W/kg
SAR(1 g) = 0.939 W/kg; SAR(10 g) = 0.384 W/kg
Maximum value of SAR (measured) = 1.39 W/kg



0 dB = 1.39 W/kg = 1.43 dBW/kg

#10_LTE Band 30_10M_QPSK_50_0_Bottom Face_0mm_Ch27710;Speed

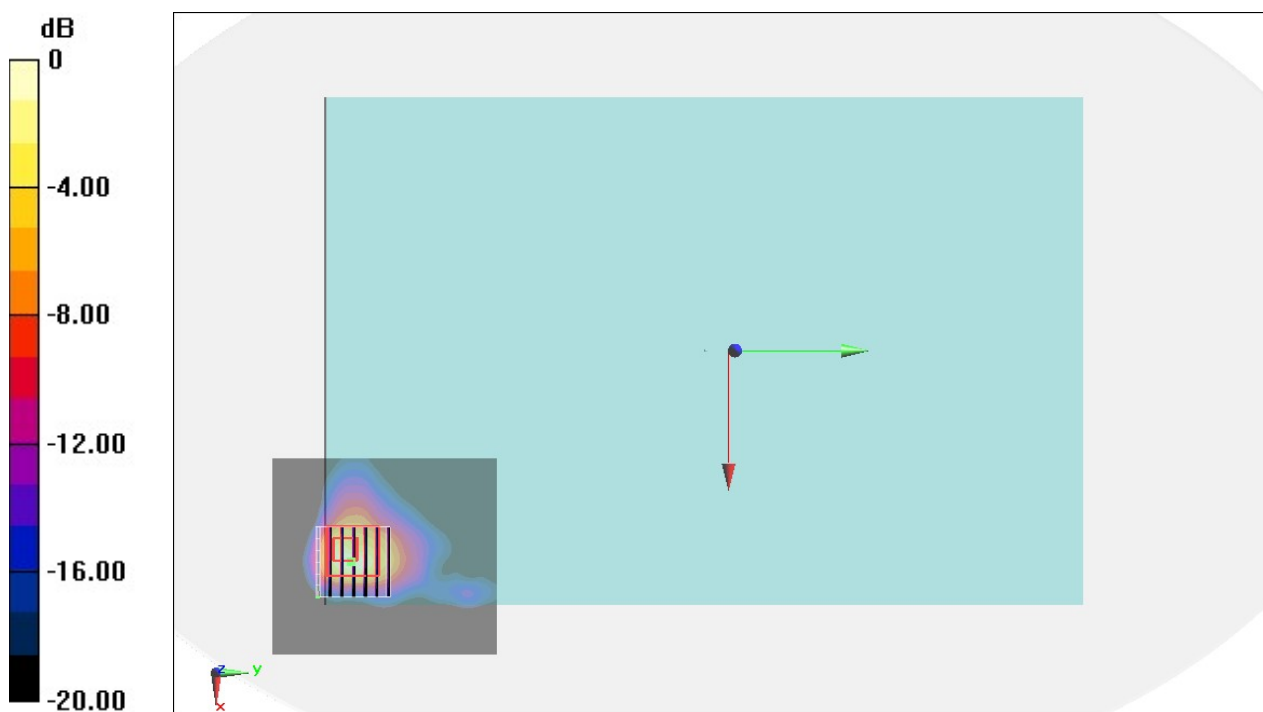
Communication System: LTE ; Frequency: 2310 MHz;Duty Cycle: 1:1
Medium: HSL_2300_191026 Medium parameters used: $f = 2310$ MHz; $\sigma = 1.699$ S/m; $\epsilon_r = 40.203$;
 $\rho = 1000$ kg/m³
Ambient Temperature : 23.4 °C ; Liquid Temperature : 22.4 °C

DASY5 Configuration

- Probe: EX3DV4 - SN3925;ConvF(7.87, 7.87, 7.87) @ 2310 MHz;Calibrated: 2019/9/20
- Sensor-Surface: 1.4mm (Mechanical Surface Detection)
- Electronics: DAE4 Sn1399; Calibrated: 2018/11/16
- Phantom: ELI v5.0; Type: QDOVA002AA; Serial: TP:1238
- Measurement SW: DASY52, Version 52.10 (2); SEMCAD X Version 14.6.12 (7450)

Area Scan (71x81x1): Interpolated grid: dx=1.200 mm, dy=1.200 mm
Maximum value of SAR (interpolated) = 2.09 W/kg

Zoom Scan (7x7x7)/Cube 0: Measurement grid: dx=5mm, dy=5mm, dz=5mm
Reference Value = 23.73 V/m; Power Drift = -0.08 dB
Peak SAR (extrapolated) = 2.95 W/kg
SAR(1 g) = 0.976 W/kg; SAR(10 g) = 0.389 W/kg
Maximum value of SAR (measured) = 2.18 W/kg



0 dB = 2.18 W/kg = 3.38 dBW/kg

#11_LTE Band 66_20M_QPSK_1_0_Edge 4_10mm_Ch132322;AMP

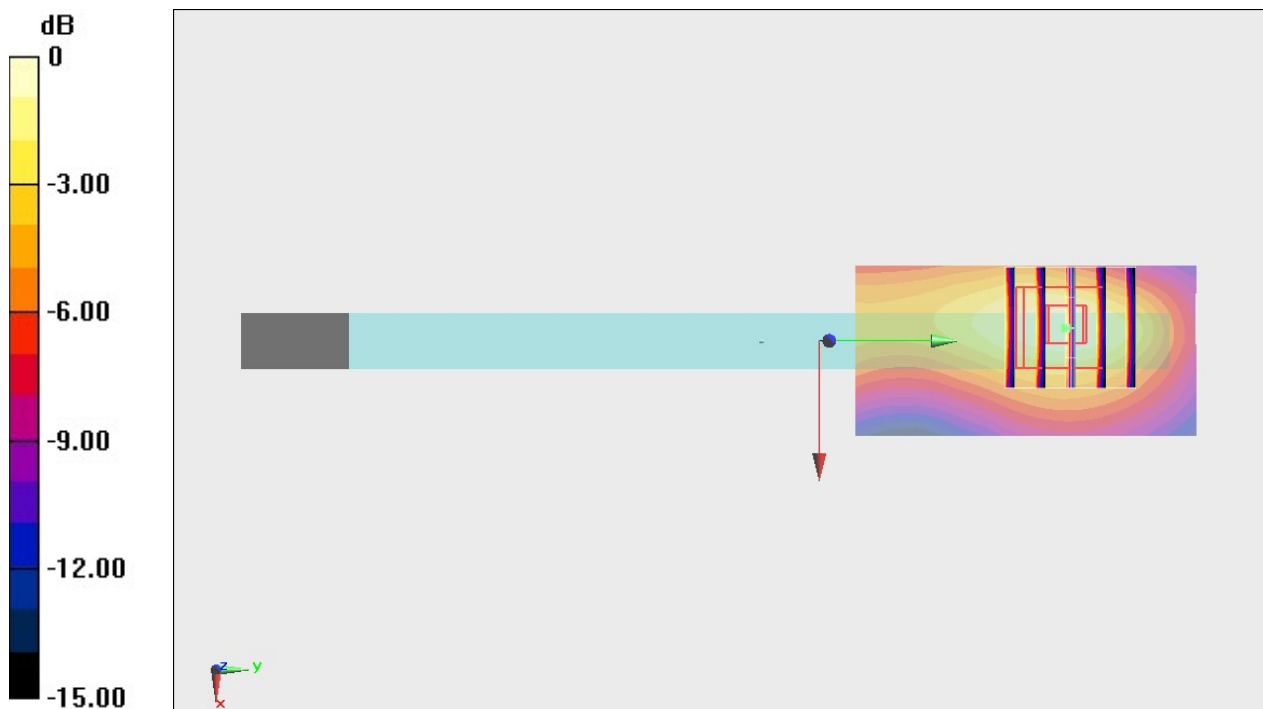
Communication System: LTE; Frequency: 1745 MHz; Duty Cycle: 1:1
Medium: HSL_1750_191031 Medium parameters used : $f = 1745$ MHz; $\sigma = 1.352$ S/m; $\epsilon_r = 40.535$;
 $\rho = 1000$ kg/m³
Ambient Temperature : 23.6 °C ; Liquid Temperature : 22.6 °C

DASY5 Configuration

- Probe: ES3DV3 - SN3270; ConvF(5.41, 5.41, 5.41) @ 1745 MHz; Calibrated: 2019/9/25
- Sensor-Surface: 3mm (Mechanical Surface Detection)
- Electronics: DAE3 Sn577; Calibrated: 2019/9/17
- Phantom: ELI V5.0; Type: QD OVA 002 Ax; Serial: 1191
- Measurement SW: DASY52, Version 52.10 (2); SEMCAD X Version 14.6.12 (7450)

Area Scan (31x61x1): Interpolated grid: dx=1.500 mm, dy=1.500 mm
Maximum value of SAR (interpolated) = 1.41 W/kg

Zoom Scan (5x5x7)/Cube 0: Measurement grid: dx=8mm, dy=8mm, dz=5mm
Reference Value = 31.09 V/m; Power Drift = 0.06 dB
Peak SAR (extrapolated) = 1.92 W/kg
SAR(1 g) = 1.08 W/kg; SAR(10 g) = 0.582 W/kg
Maximum value of SAR (measured) = 1.36 W/kg



0 dB = 1.36 W/kg = 1.34 dBW/kg

#12_LTE Band 41_20M_QPSK_1_0_Bottom Face_0mm_Ch40620;AMP

Communication System: LTE ; Frequency: 2593 MHz;Duty Cycle: 1:1.59

Medium: HSL_2600_191026 Medium parameters used : $f = 2593$ MHz; $\sigma = 1.998$ S/m; $\epsilon_r = 38.799$; $\rho = 1000$ kg/m³

Ambient Temperature : 23.6 °C ; Liquid Temperature : 22.6 °C

DASY5 Configuration:

- Probe: EX3DV4 - SN3925; ConvF(7.5, 7.5, 7.5) @ 2593 MHz; Calibrated: 2019/9/20
- Sensor-Surface: 1.4mm (Mechanical Surface Detection)
- Electronics: DAE4 Sn1399; Calibrated: 2018/11/16
- Phantom: ELI v5.0; Type: QDOVA002AA; Serial: TP:1238
- Measurement SW: DASY52, Version 52.10 (2);SEMCAD X Version 14.6.12 (7470)

Area Scan (71x81x1): Interpolated grid: dx=1.200 mm, dy=1.200 mm

Maximum value of SAR (interpolated) = 2.39 W/kg

Zoom Scan (7x7x7)/Cube 0: Measurement grid: dx=5mm, dy=5mm, dz=5mm

Reference Value = 21.32 V/m; Power Drift = -0.02 dB

Peak SAR (extrapolated) = 2.77 W/kg

SAR(1 g) = 0.923 W/kg; SAR(10 g) = 0.332 W/kg

Maximum value of SAR (measured) = 1.89 W/kg

