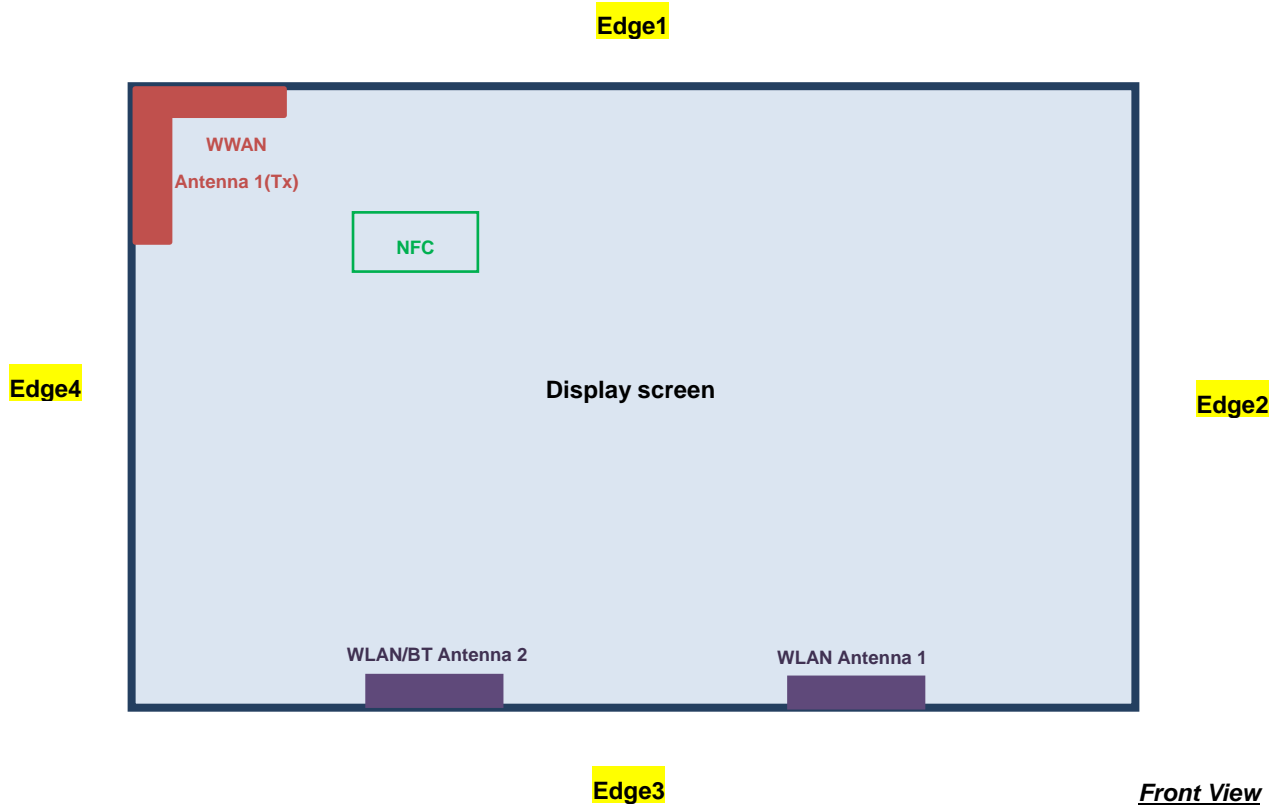


## Appendix D. Antenna Location

<For Tablet Mode>

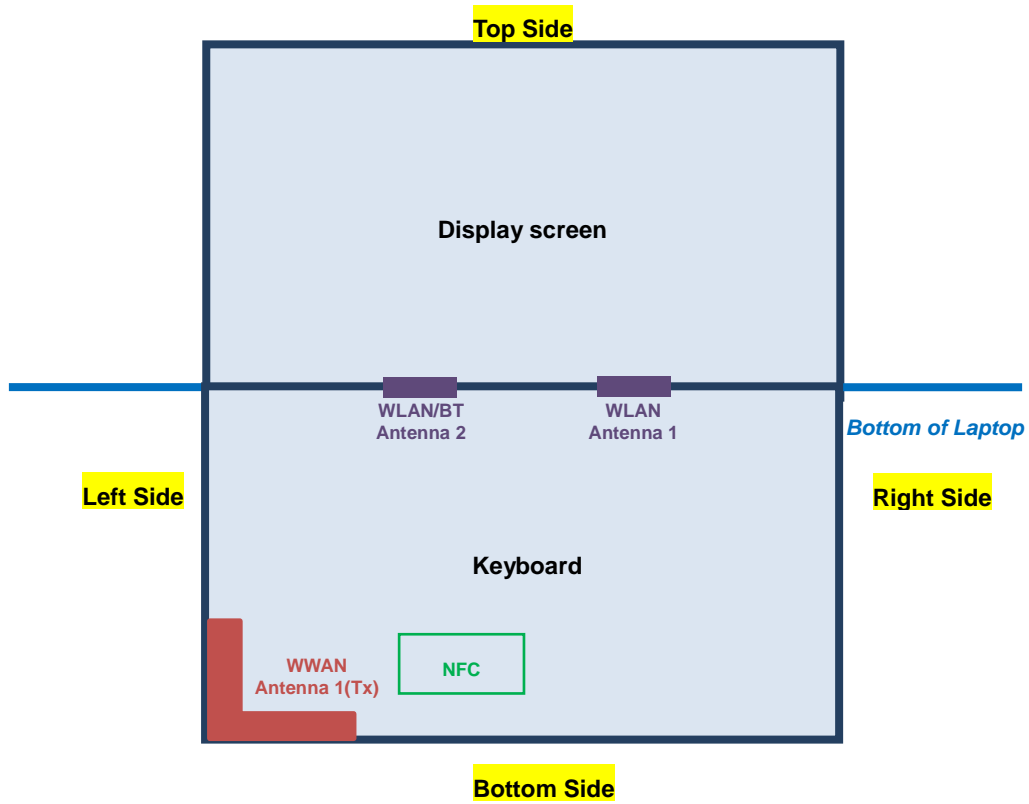


**Front View**

The separation distance for antenna to edge:

Antenna	Bottom Face (mm)	To Edge1 (mm)	To Edge2 (mm)	To Edge3 (mm)	To Edge4 (mm)
WWAN Antenna	< 5	< 5	246.4	180	< 5

<For Laptop Mode>



The separation distance for antenna to edge :

Antenna	Bottom of Laptop (mm)
WWAN Antenna	< 5

**Appendix D. SAR Test Setup Photos**



**Bottom Face, Test Separation 0 mm**



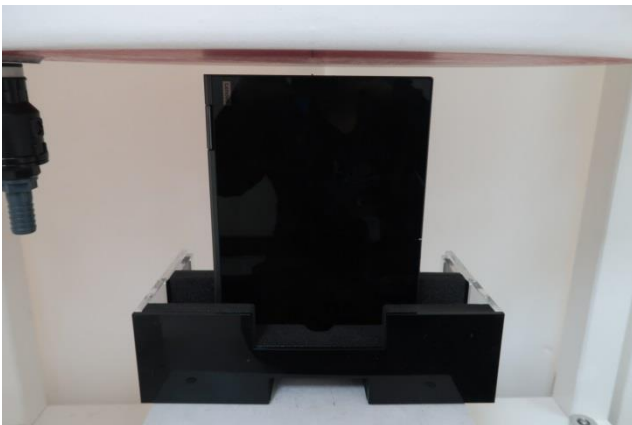
**Bottom Face, Test Separation 30 mm**



**Edge1, Test Separation 0 mm**



**Edge1, Test Separation 6 mm**



**Edge4, Test Separation 10 mm**



**Edge4, Test Separation 0 mm**



**Bottom of Laptop, Test Separation 20 mm**



**Bottom of Laptop, Test Separation 0 mm**