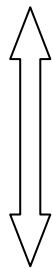


KD ENTRY user manual:

First step: Download KD ENTRY APP from App Store. After that users can open Bluetooth settings from mobile phone.



Second step: KD ENTRY insert the OBD connector of the car to get power, the LED light will turn on.



### Click to Search

**OBD version:** insert the device OBD diagnostic interface, the LED light on, device ready for pairing, search and pair in 40 seconds

**Box version:** Press the pair button of the device until the LED light on, device ready for pairing, search and pair in 30 seconds.

Paired Device
Unpaired Device

Third step: click the Bluetooth settings and then click to search



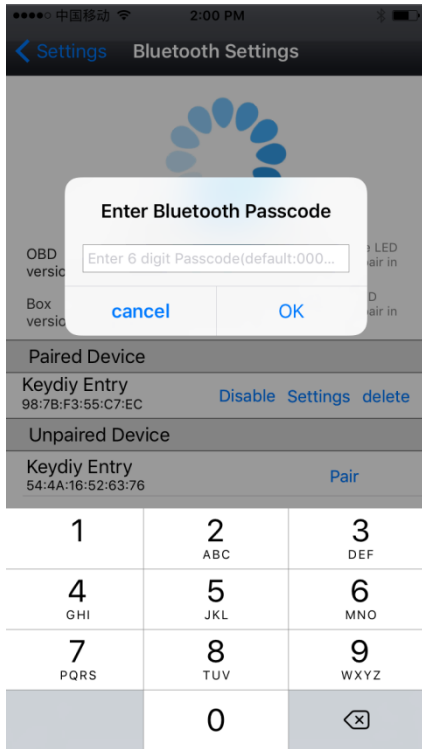
### Click to Stop Search

**OBD version:** insert the device OBD diagnostic interface, the LED light on, device ready for pairing, search and pair in 40 seconds

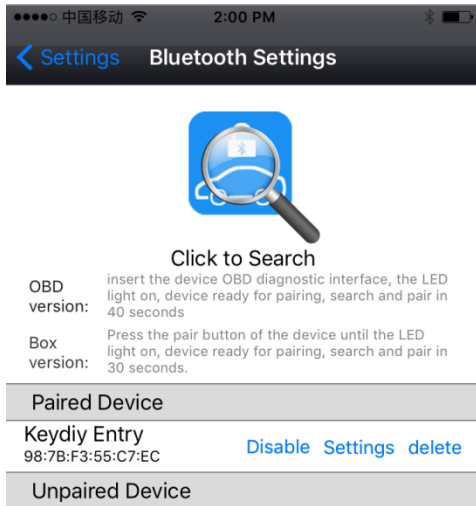
**Box version:** Press the pair button of the device until the LED light on, device ready for pairing, search and pair in 30 seconds.

Paired Device
Keydiy Entry 98:7B:F3:55:C7:EC <a href="#">Disable</a> <a href="#">Settings</a> <a href="#">delete</a>
Unpaired Device
Keydiy Entry 54:4A:16:52:63:76 <a href="#">Pair</a>

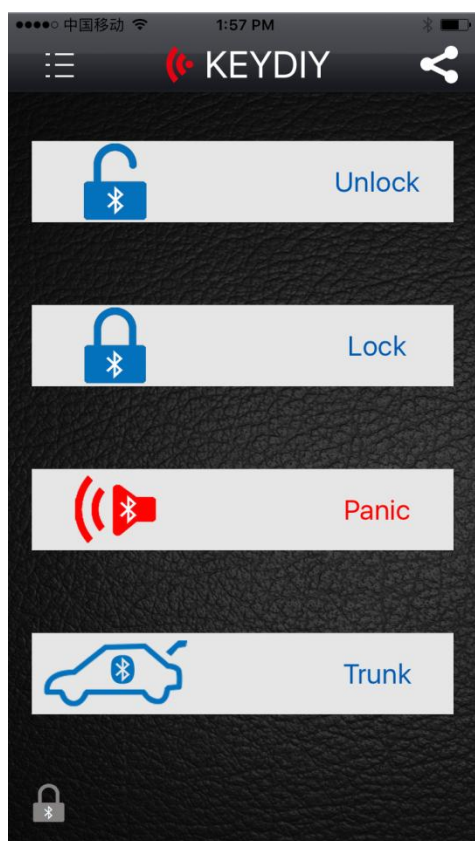
The Forth step: when you find the device, and then click pairing



The Fifth step: input the default password "000000"



The sixth step: paired the device. Lock means keep the car not open via the Bluetooth function. Unlock means open the car via Bluetooth function, trunk means open the trunk via Bluetooth function. Panic means searching the car, it is convenient to find where the car is.



The seventh step: return APP UI, operate the keys.

Power supply: DC 12V

FCC ID: 2AJMY- KD ENTRY

This device complies with part 15 of the FCC Rules. Operation is subject to the condition that this device does not cause harmful interference (1) this device may not cause harmful interference, and (2) this device must accept any interference received, including interference that may cause undesired operation.

Changes or modifications not expressly approved by the party responsible for compliance could void the user's authority to operate the equipment.

NOTE: This equipment has been tested and found to comply with the limits for a Class B digital device, pursuant to Part 15 of the FCC Rules. These limits are designed to provide reasonable protection against harmful interference in a residential installation. This equipment generates uses and can radiate radio frequency energy and, if not installed and used in accordance with the instructions, may cause harmful interference to radio communications. However, there is no guarantee that interference will not occur in a particular installation.

If this equipment does cause harmful interference to radio or television reception, which can be determined by turning the equipment off and on, the user is encouraged to try to correct the interference by one or more of the following measures:

- Reorient or relocate the receiving antenna.
- Increase the separation between the equipment and receiver.