



**KD900+ is the device based on smartphone to make remote and manage remote. This product has been awarded national patent, with the joint efforts of development teams at home and abroad, locksmiths can use one blank remote to make over 500 kinds remotes of different car models. (these data are subject to the real-time data which is updating everyday) and reduce their inventories efficiently. KD900+ is popular in garage and key shop, it is one of the necessary tools of locksmiths, We would like to introduce how to install and manage KD900+ in detail below:**

**First step: Download APP**

Andriod phone please search "Mobile KD" or "KD900" on Google play, Apple Phone please search " Mobile KD" or "KD900" on Apple store. Or scan QR code to download the APP.



ANDROID



IPHONE

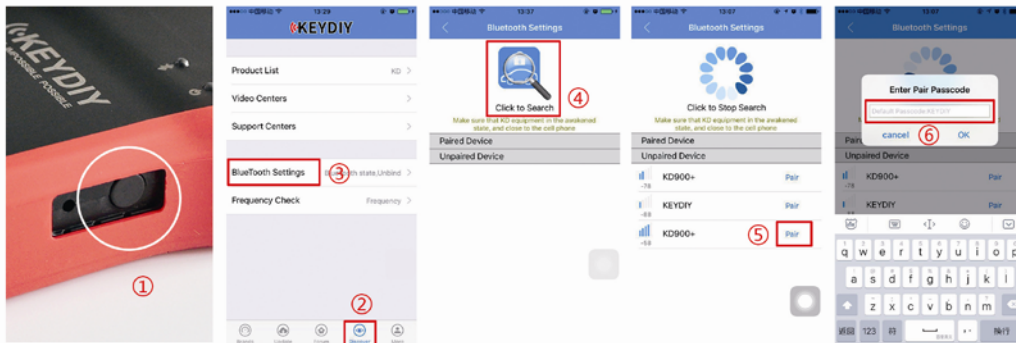


**Second step: KD900+ Install Battery**

Remove the battery cover, install 4pieces AA batteries

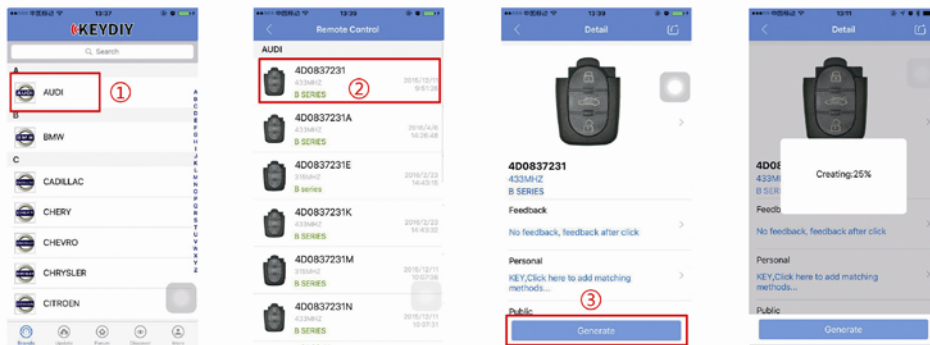
**Third step: Pair the bluetooth**

Turn on the KD900+ ---Open the Mobile KD APP---Discover---Bluetooth setting---click to search---Pair ---Enter the default password"keydiy"



**Fourth step: Generate remote**

Choose car brand--choose remote-- Generate



Additional information:

PS2 terminal can use 6P cable connecting remote controller. Porgram the remote control code to the remote control,



USB terminal connects computer and can be use for software updates  
The USB port is only used for the KD900 + software upgrade,



Verification of programming code in the remote control:

After programming to the remote control, users can check whether the programming code in the remote control is correct or not by following below steps:

- a.).Place the remote control near the KD900+ and push buttons on the remote control to transmit the 433.92MHz signal
- b).The 433.92MHz signal can be received by the U10-frequency detection circuit (433.92MHz receiving function only) in the KD900+.
- c) .The KD900+will analyze the receiving signal to judge if the programming code in the remote control is correct or not.
- d). If the code is correct, the KD900 + power light will flash once; if the coding error, KD900 + power light will turn red.

#### **FCC ID: 2AJMY-KD900**

This device complies with part 15 of the FCC Rules. Operation is subject to the condition that this device does not cause harmful interference (1) this device may not cause harmful interference, and (2) this device must accept any interference received, including interference that may cause undesired operation. Changes or modifications not expressly approved by the party responsible for compliance could void the user's authority to operate the equipment.

NOTE: This equipment has been tested and found to comply with the limits for a Class B digital device, pursuant to Part 15 of the FCC Rules. These limits are designed to provide reasonable protection against harmful interference in a residential installation. This equipment generates ,uses and can radiate radio frequency energy and, if not installed and used in accordance with the instructions, may cause harmful interference to radio communications. However, there is no guarantee that interference will not occur in a particular installation.

If this equipment does cause harmful interference to radio or television reception, which can be determined by turning the equipment off and on, the user is encouraged to try to correct the interference by one or more of the following measures:

- Reorient or relocate the receiving antenna.
- Increase the separation between the equipment and receiver.
- Connect the equipment into an outlet on a circuit different from that to which the receiver is connected.
- Consult the dealer or an experienced radio/TV technician for help.

The device has been evaluated to meet general RF exposure requirement. The device can be used in portable exposure condition without restriction.