

Product specification

Quick Reference Data

	Antenna module on the system board	
Frequency	2.4 - 2.5GHz*	
Ant.Port Input Pwr.(dBm)	0(Typ.BT class 2 output power)	
Tot.Rad.Pwr.(dBm)	-2.3(Input pwr-loss pwr)	
Peak EIRP(dBm)	1.7	
Directivity(dBi)	1 (all direction antenna)	
Efficiency(dB)	-2.3(58.5%)	
Gain(dBi)	1.7(Peak Gain XY-plane)	
Maximum Power(dBm)	1.7(XY-plane)	
Maximum Power(dBm)	-4(XY-plane)	
Avg.Power(dBm)	-0.5(XY-plane)	
Max/Min Ratio(dB)	5.3(XY-plane)	
Max/Avg Ratio(dB)	1.8(XY-plane)	
Min/Avg Ratio(dB)	-3.5(XY-plane)	
Average Gain(dB)	-0.5(Avg Gain XY-plane)	

All the technical data and information contained herein are subject to change without prior notice

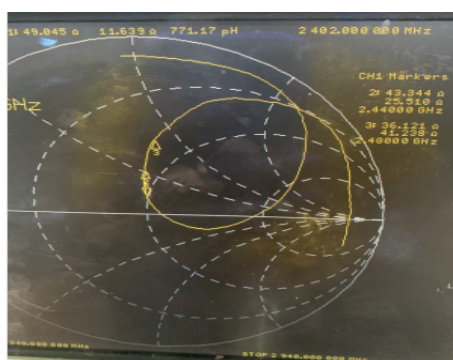
Antenna Layout & module on the system board



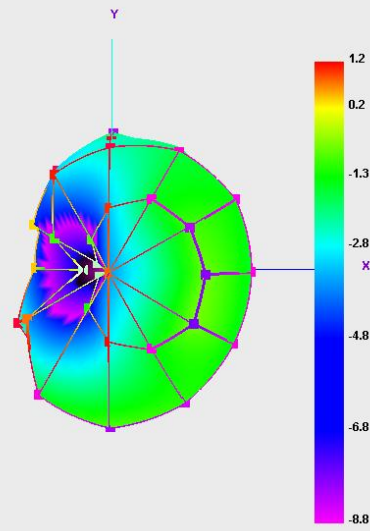
Antenna Gain

Gain Table

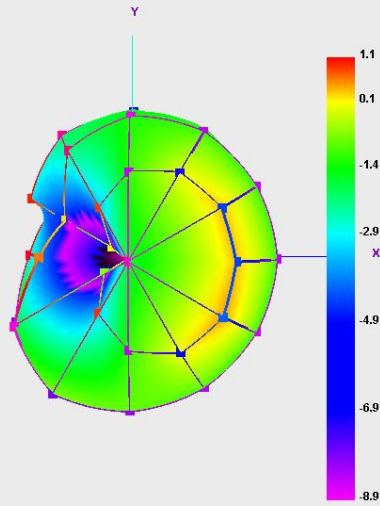
Unit in dBi @ 2.44GHz	XY-plane		XZ-plane		YZ-plane		Efficiency
	Peak	Avg.	Peak	Avg	Peak	Avg	
Module Board	1.3	-0.5	1.7	-3.8	1.1	-3.0	58.5%



2400.000MHz



2450.000MHz



2500.000MHz

