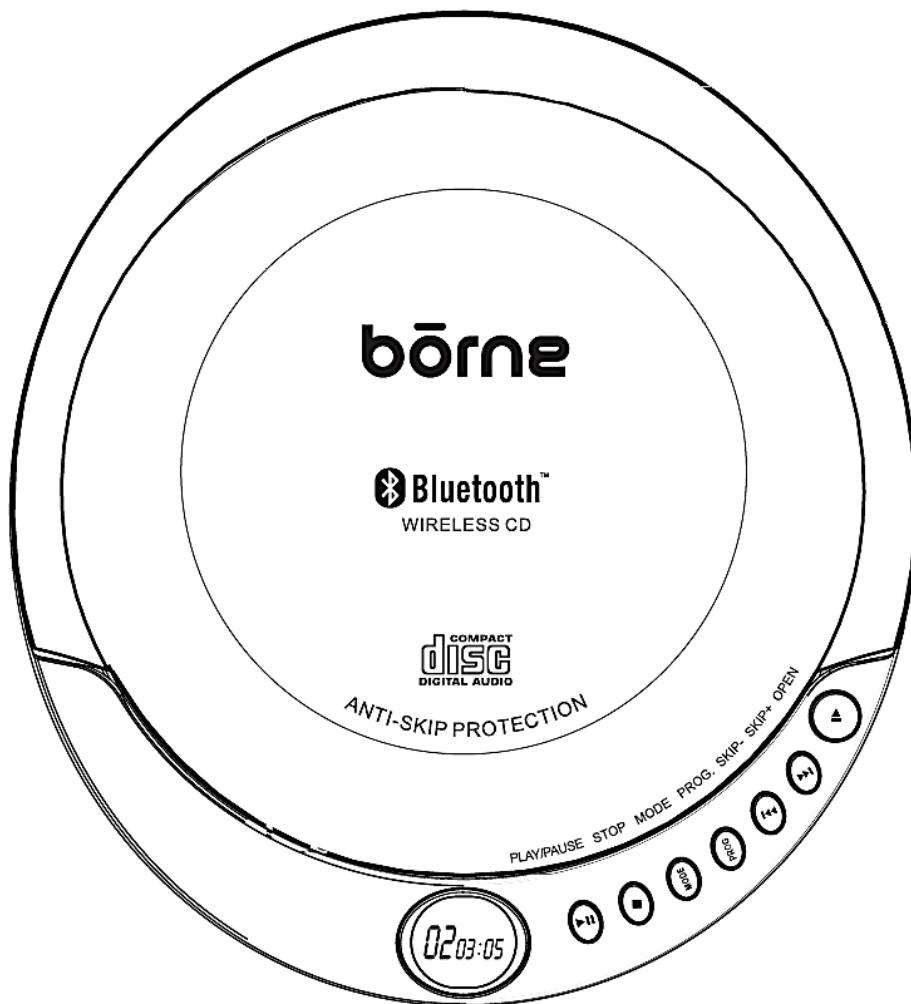


# börne®

## PORTABLE BLUETOOTH CD PLAYER

### PCDBT01



PLEASE READ THIS USER MANUAL COMPLETELY BEFORE  
OPERATING THIS UNIT AND RETAIN THIS BOOKLET FOR  
FUTURE REFERENCE.

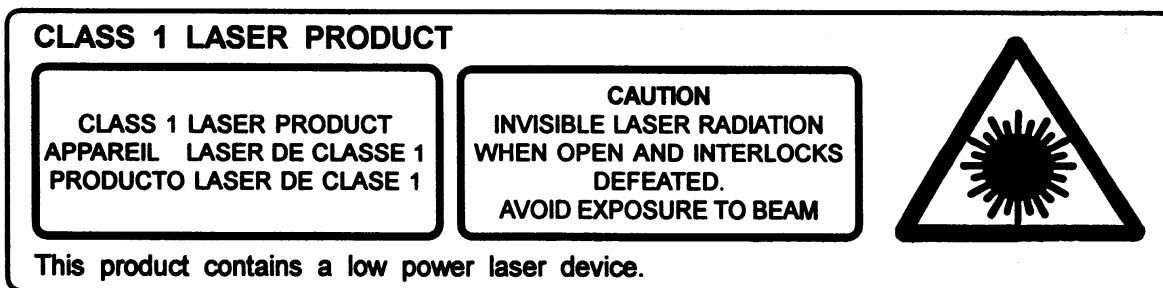
## WARNING

# **IMPORTANT SAFETY INSTRUCTIONS**

1. Read these instructions carefully.
2. Keep these instructions in a safe place.
3. Heed all warnings.
4. Cleaning: Unplug this unit from the power source and remove the batteries before cleaning. Do not use liquid cleaners or aerosol cleaners. Clean only with a damp or dry cloth.
5. Only use attachments/accessories specified by the manufacturer.
6. Check that the voltage indicated on the rating label corresponds with that of the local power supply before connecting the unit to the power supply.
7. This unit is intended for indoor, domestic use only. It should not be used for commercial applications.
8. This unit contains no user serviceable parts. All repairs must be carried out by a qualified person. Incorrect repairs may place the user at risk of harm, and will void the warranty.
9. Do not operate the unit with a power cord or plug if the power cord or plug is damaged. If the power cord or plug is damaged, contact a qualified person to carry out repairs.
10. Do not operate this unit after it has malfunctioned, or if it has been dropped or damaged in any way.
11. Do not expose this unit to water, dripping or splashing.
12. Never place any heavy objects, or any containers filled with liquid on top of the unit.
13. Do not leave the unit near heat sources, or in direct sunlight, or anywhere that is excessively dusty, sandy or humid.
14. Always unplug the unit and remove the batteries when it is not in use for a prolonged period of time.
15. Do not insert any foreign objects into any of the outlets on the unit.
16. This unit is not a toy. It must not be used by children less than twelve years of age. Also, the unit must not be used by anyone with reduced physical, sensory or mental capabilities, unless they have been given supervision or instruction on how to use it safely.

**SAVE THESE INSTRUCTIONS**

## CAUTION



Follow the advice below for safe operations.

### ON PROTECTION AGAINST LASER ENERGY EXPOSURE

- As the laser beam used in this compact disc player is harmful to the eyes, do not attempt to disassemble the casing.
- Stop operation immediately if any liquid or solid object should fall into the cabinet.
- Do not touch the lens or poke at it. If you do, you may damage the lens and the player may not operate properly.
- Do not put anything in the safety slot. If you do, the laser diode will be ON when the CD door is still open.
- If the unit is not to be used for a long period of time, make sure that all power sources are disconnected from the unit. Remove all batteries from the battery compartment.
- This unit employs a laser. The use of controls or adjustment or performance of procedures other than those specified here may result in exposure to hazardous radiation.

Should any trouble occur, remove the power source and refer servicing to qualified personnel.

## **FCC Warning**

This device complies with part 15 of the FCC Rules. Operation is subject to the following two conditions: (1) This device may not cause harmful interference, and (2) this device must accept any interference received, including interference that may cause undesired operation.

NOTE 1: This equipment has been tested and found to comply with the limits for a Class B digital device, pursuant to part 15 of the FCC Rules. These limits are designed to provide reasonable protection against harmful interference in a residential installation. This equipment generates, uses and can radiate radio frequency energy and, if not installed and used in accordance with the instructions, may cause harmful interference to radio communications. However, there is no guarantee that interference will not occur in a particular installation. If this equipment does cause harmful interference to radio or television reception, which can be determined by turning the equipment off and on, the user is encouraged to try to correct the interference by one or more of the following measures:

- Reorient or relocate the receiving antenna.
- Increase the separation between the equipment and receiver.
- Connect the equipment into an outlet on a circuit different from that to which the receiver is connected.
- Consult the dealer or an experienced radio/TV technician for help.

NOTE 2: Any changes or modifications to this unit not expressly approved by the party responsible for compliance could void the user's authority to operate the equipment.

### **WARNING**

Changes or modifications to this unit not expressly approved by the party responsible for compliance could void the user's authority to operate the equipment.

## **IC Warning**

This device complies with Industry Canada license-exempt RSS standard(s). Operation is subject to the following two conditions: (1) this device may not cause interference, and (2) this device must accept any interference, including interference that may cause undesired operation of the device. Under Industry Canada regulations, this radio transmitter may only operate using an antenna of a type and maximum (or lesser) gain approved for the transmitter by Industry Canada. To reduce potential radio interference to other users, the antenna type and its gain should be so chosen that the equivalent isotropically radiated power (e.i.r.p.) is not more than that necessary for successful communication.

This device complies with Canadian ICES-003 and RSS-247

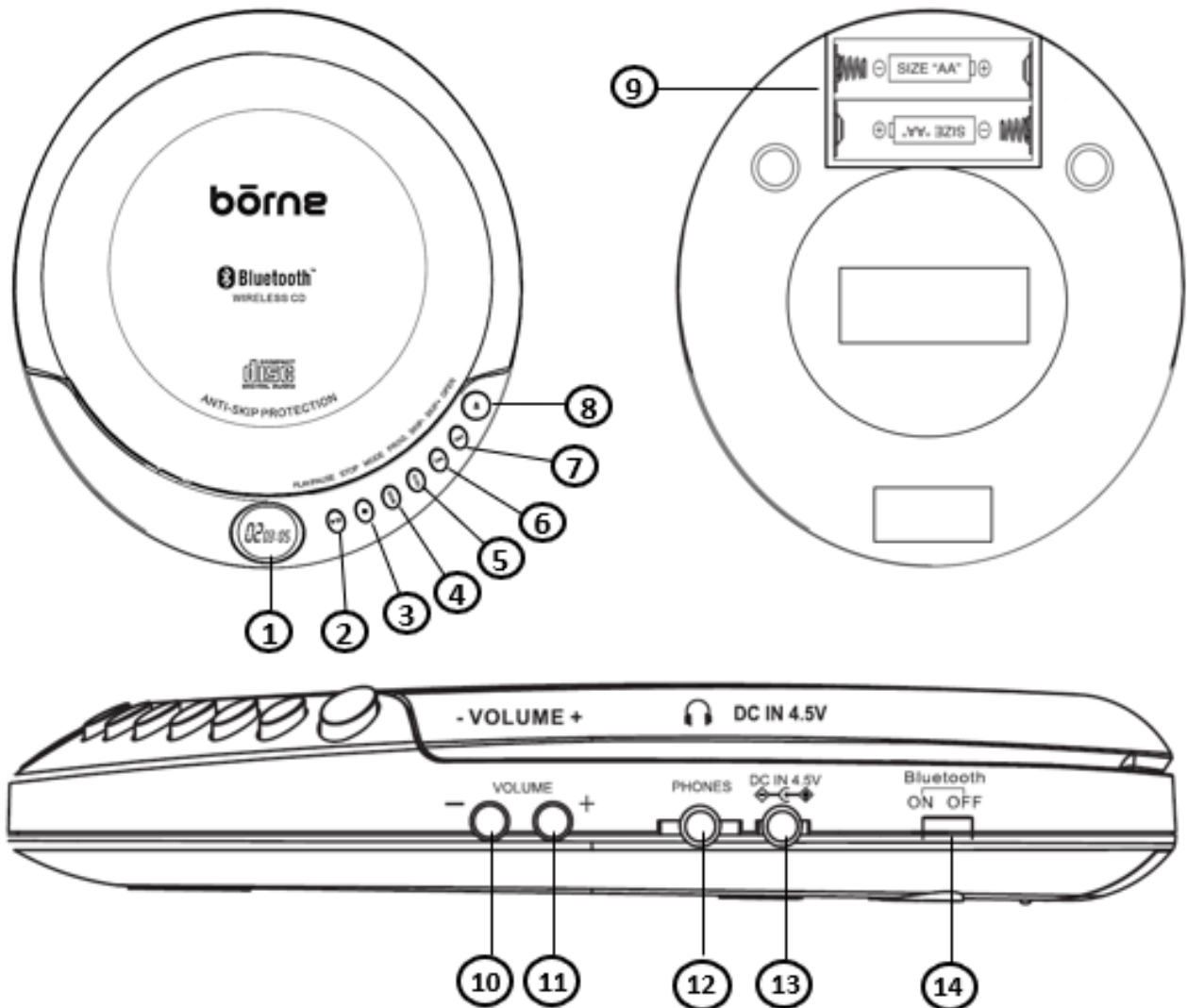
### **WARNING**

Changes or modifications to this unit not expressly approved by the party responsible for compliance could void the user's authority to operate the equipment.

**Thank you for your purchase.**

**Please visit our website at [www.borne-lifestyle.com](http://www.borne-lifestyle.com).**

## LOCATION OF CONTROLS



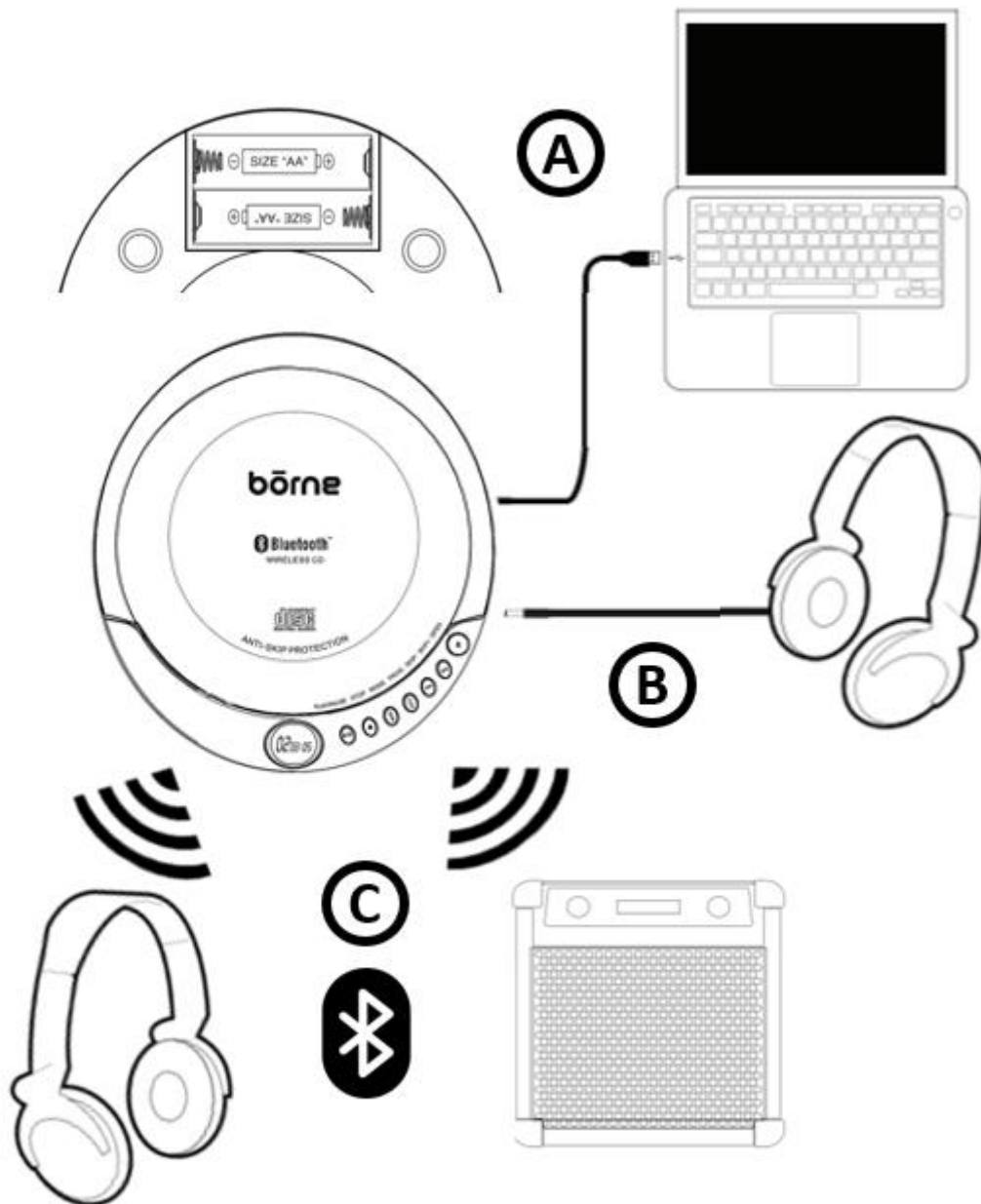
1. LCD Display	8. CD Door Button
2. Play/Pause Button	9. Battery Compartment Cover
3. Stop/Power Off Button	10. Volume Decrease Button
4. Mode Button	11. Volume Increase Button
5. Program Button	12. Earphone Jack
6. Skip/Search Backward Button	13. DC Power Input Jack
7. Skip/Search Forward Button	14. Bluetooth ON/OFF Switch

## CONTENTS

- Portable Bluetooth CD Player
- User Manual
- USB to Barrel Power Cable

(Batteries and Earphones not included)

## SET UP



- A. The Portable Bluetooth CD Player may be powered by batteries (not included) or by using the provided USB to Barrel Power Cable and plugging it into your computer or a USB wall charger (not included).
  - For battery operation, open the Battery Compartment Cover on the backside of the unit by sliding the cover open and gently lifting the cover. Install 2 x “AA” size batteries (not included) according to the correct polarity (+/-) diagram in the battery compartment or as shown in the above diagram. Gently lower the cover and slide the cover back into the closed position.
  - To use the unit with the provided USB to Barrel Power Cable, connect the barrel end into the DC Power Input Jack located on the side of the unit and the other USB end into an available port on your computer or a USB wall charger (not included).
- B. To listen to your music, plug in either headphones or earphones (not included) into the 3.5mm Earphone Jack located on the side of the unit.
- C. This unit is Bluetooth enabled and can transmit your music wirelessly to your Bluetooth headphones/earphones or Bluetooth speaker (not included). Please see further below on pairing instructions.


**NOTE:** When the unit is being powered by the USB to Barrel Power Cable, the unit will automatically stop using battery power.

**If using an external AC adapter with a connected barrel cable (not provided), make sure the output voltage is rated DC 4.5V 650mA with a centre negative pin.**

**IMPORTANT:** Be sure that the batteries are installed correctly. Wrong polarity may damage the unit and void the warranty. For best performance and longer operating time, we recommend the use of good quality alkaline type batteries.

**CAUTION:**

- Do not mix old and new batteries.
- Do not mix alkaline, standard (carbon-zinc) or rechargeable (nickel-cadmium) batteries.
- If the unit is not to be used for an extended period of time, remove the batteries. Old or leaking batteries can cause damage to the unit and may void the warranty.
- Do not dispose of batteries in fire, batteries may explode or leak.

**Low Battery Indicator:** When the battery replacement indicator  flashes on the LCD Display, replace the batteries.

## CD OPERATION

**NOTE:** This unit not only plays commercial compact discs but also self-compiled CD-R and CD-RW discs.

- Because of non-standardized format definition/production of CD-R/RW, playback quality & performance is not guaranteed.
- Manufacturer is not responsible for the playability of CD-R/RW due to recording conditions such as PC performance, writing software, media properties etc.
- This unit does not support MP3 format files.

### PLAYING A CD

1. Open the CD compartment lid by pressing the CD Door Button, load the CD into the unit (label side up) and close the compartment lid.
2. Connect headphones or earphones (not included) to the Earphone Jack.
3. Press the Play/Pause Button to turn on the unit and start playing music. The anti-skip protection will be activated automatically and “ESP” will begin to flash on the LCD Display.
4. Adjust the volume to your desired level using the Volume Increase / Decrease Buttons located on the side of the unit.
5. While playing music, press the Play/Pause Button to pause playback and press it again to resume playback.
6. Press the Stop Button to stop playback.
7. Press and hold the Stop Button to turn off the unit. The unit has an automatic shut off feature if the unit is in the stop mode after several seconds.

**ATTENTION:** Avoid prolonged exposure to high volume levels as it may cause permanent hearing damage.

### PLAYBACK MODES

This unit has various repeat and playback modes. Press the Mode Button repeatedly to cycle through the below list of various modes:

- Repeat Single Track
- Repeat All Tracks
- Intro (Plays the first 10 seconds of each track)
- Random (Plays all tracks in random order)

### SKIP AND SEARCH WHILE PLAYING A CD

1. During playback, press the Skip/Search Forward Button to go to the next track or press and hold the Skip/Search Forward Button to fast forward within the current track,
2. During playback, press the Skip/Search Backward Button to either go to the beginning of the current

track or press it again to skip to the previous track. Press and hold the Skip/Search Backward Button to rewind within the current track,

### PROGRAM PLAY MODE

This function allows music tracks to be played in a programmed sequence.

1. Press the Program Button. "00" (track number) and "PROG" will start to flash on the left side of the LCD Display.
2. Press the Skip/Search Backward / Forward Button to select the track to be programmed.
3. Press the Program Button again to store the selection. The LCD Display will advance to "02" and flash to prompt for the next track to program.
4. You may repeat steps 2 to 3 to program up to 20 tracks.
5. Press the Play/Pause Button to start the programmed playback.
6. Programmed tracks will be played through the sequence once and then stop however, you may use the various Playback Modes to repeatedly play a certain track or repeat all tracks in the program.
7. Press the Stop Button to stop the program play mode.

## BLUETOOTH OPERATION

Pairing a Bluetooth Enabled Device for the First Time

**NOTE: Refer to the user manual for your Bluetooth enabled Headphones/Earphones or Speaker for instructions on pairing and connecting Bluetooth devices.**

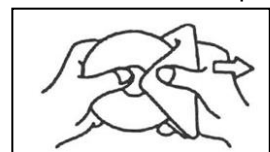
1. Keep your unit and your Bluetooth enabled device within 1 metre at all times during the pairing process.
2. Slide the Bluetooth ON/OFF Switch to the ON position located on the side of the unit. A small blue LED light will start to flash beside the DC Power Input Jack indicating the unit is ready to pair.
3. Turn on your Bluetooth enabled Headphones/Earphones or Speaker to pair with the unit and ensure it is in pairing mode.
4. When the unit is successfully paired and connected to your Bluetooth enabled Headphones/Earphones or Speaker, the blue Bluetooth LED indicator light will stay solid.

### NOTE:

- **Because this unit cannot choose which Bluetooth enabled Headphones/Earphones or Speaker it can connect to, make sure there are no other Bluetooth enabled devices turned on in the area during the pairing process. This unit will automatically pair with the closest Bluetooth enabled Headphones/Earphones or Speaker that is in pairing mode.**
- **After successful pairing with your Bluetooth enabled Headphones/Earphones or Speaker, the paired devices will remember each other and re-pairing will not be required after the first time.**
- **If you want to pair the unit with other Bluetooth enabled devices, please disconnect the existing device and pair with the new device according to the steps above.**

## CARE AND MAINTENANCE

1. Children should be supervised when using this product.
2. Never wrap the provided USB to Barrel Power Cable around any animal or person. Special care should be taken with long wires.
3. Clean your unit with a damp (never wet) or dry cloth. Solvent or detergent should never be used.
4. Avoid leaving your unit in direct sunlight or in hot, humid or dusty places.
5. Keep your unit away from heating appliances and sources of electrical noise such as fluorescent lamps or motors.
6. If drop-outs or interruptions occur in the music during CD playback, or if the CD fails to play at all, its bottom surface may require cleaning. Before playing, wipe the disc from the center outwards with a good soft cleaning cloth.





## THROUBLESHOOTING

### **The unit will not turn on.**

- Check that the batteries are inserted to the correct polarity (+/-).
- Replace with fresh new batteries.
- Ensure the USB to Barrel Cable connector and the USB connector is connected properly.

### **The CD will not play properly.**

- Ensure the CD is inserted properly and the compartment is closed. Press the Stop button before playing the CD.
- Make sure the CD disc is clean and free of scratches, or try another CD.

### **The Bluetooth enabled Headphones/Earphones or Speaker that I want to connect is not pairing.**

- Turn off or move other nearby Bluetooth devices more than 50' (15.2 m) away so only the closest Bluetooth enabled Headphones/Earphones or Speaker you want to connect will pair.

### **I am connected to Bluetooth enabled Headphones/Earphones or Speaker but I do not hear any audio.**

- If you are connected to Bluetooth enabled Headphones/Earphones or Speaker with a play/pause button and do not hear audio, try pressing it's play/pause button.
- Turn ON and OFF the Bluetooth ON/OFF Switch to disconnect the unit from the Bluetooth enabled Headphones/Earphones or Speaker and try following the above instructions to pair again.
- Use the Volume Increase Button on the unit to turn up the volume output level.

**Need help? Please call us.**

**If you encounter any difficulties with this product, please call or email us and our representatives will be ready to help you.**

**Toll free: 1-800-593-6669 (Monday to Friday: 9am – 5pm EST)**

**Email: [support@borne-lifestyle.com](mailto:support@borne-lifestyle.com)**

**Thank you for your purchase. We want you to start enjoying your product.**



## LIMITED WARRANTY

Warning: Some Products may contain components that are small enough to be swallowed. Keep out of the reach of children.

Before returning your Product for service under this Warranty, (i) please read the instruction manual carefully and visit our website at [www.borne-lifestyle.com](http://www.borne-lifestyle.com) for product updates and extended support documentation (e.g., Frequently Asked Questions, Common Troubleshooting Guides); (ii) please contact Borne Electronics Support if you are still having trouble with your Product.

Subject to the terms and conditions herein, Borne Electronics warrants to the original purchaser of the Product ("Customer") that the Product will be free from defects in material or workmanship under normal, noncommercial use ("Defects") for a period of 1 year.

Warranty Period encompasses separate "Coverage Periods" for Parts and Labor, with each Coverage Period to begin from the original date of Customer purchase. Parts are covered for a period of 1yr. Labour is covered for 90 days. If Customer returns a defective Product during the applicable Warranty Period, Borne Electronics will, at its option during the specified Coverage Periods for Parts and Labor (as applicable), either: (i) repair the Product or (ii) replace the Product with a new or refurbished Product, in either case free of charge to Customer for Parts and/or Labor (as applicable) during the specified Coverage Period only, and excluding applicable shipping charges for which the Customer is responsible. The foregoing states the Customer's exclusive remedy and Borne Electronics' sole liability for breach of the limited warranty contained herein.

This Warranty specifically excludes any Product (or, as applicable, any component thereof) that has Defects resulting from: (a) any neglect or misuse by a Customer, an accident, improper application, violation of operating instructions for the Product, any other Customer-induced damage, or the alteration or removal of any Product serial number; (b) any modification or repair to Product by any party other than Borne Electronics or a party authorized in writing by Borne Electronics; (c) any damage to Product due to power surges, incorrect electrical voltage, misconnection to any device, or malfunction of any device used with the Product; (d) cosmetic damage to the Product caused by normal wear and tear; (e) shipping damage that occurs while the Product is in transit; (f) damage caused by heat sources, sunlight, electromagnetic conditions, or other climatic conditions; or (g) any acts of God.

Product is sold to Customer for personal, non-commercial use only. Product is not warranted for Customer's commercial or rental use. In addition, Product is not warranted against failure, and should not be used by Customer for any application where (i) there is a risk that any data stored on Product will be breached or otherwise compromised, or (ii) the data stored on Product is relied upon for medical or lifesaving applications. Borne Electronics expressly disclaims any warranty for any of the foregoing uses to the fullest extent permitted by law. Customer assumes any and all risks associated with such uses of Product, and agrees to indemnify Borne Electronics for any damages claimed against Borne Electronics for such uses.

This Warranty specifically and expressly excludes any Product that is purchased by Customer as a "floor" or "display" model. Any such Product is purchased by Customer "AS IS" and Borne Electronics disclaims any Warranties, express or implied, in relation thereto.

EXCEPT FOR THE EXPRESS WARRANTIES STATED ABOVE AND TO THE MAXIMUM EXTENT PERMITTED BY LAW, THE PRODUCT IS PROVIDED "AS IS", AND BORNE ELECTRONICS DISCLAIMS ALL OTHER WARRANTIES, INCLUDING WITHOUT LIMITATION ANY IMPLIED WARRANTY OF (I) MERCHANTABILITY, (II) FITNESS FOR A PARTICULAR PURPOSE, OR (III) NON-INFRINGEMENT OF THIRD PARTY RIGHTS. TO THE MAXIMUM EXTENT PERMITTED BY APPLICABLE LAW, IN NO EVENT WILL BORNE ELECTRONICS BE LIABLE TO CUSTOMER OR ANY THIRD PARTY FOR ANY INDIRECT, SPECIAL, INCIDENTAL, CONSEQUENTIAL, EXEMPLARY OR PUNITIVE DAMAGES, INCLUDING, WITHOUT LIMITATION, ANY LOST PROFITS OR REVENUES, LOSS OR INACCURACY OF ANY DATA OR COST OF SUBSTITUTE GOODS, REGARDLESS OF THE THEORY OF LIABILITY (INCLUDING NEGLIGENCE). ADDITIONALLY, EVEN IF BORNE ELECTRONICS HAS BEEN ADVISED OF THE POSSIBILITY OF SUCH DAMAGES, BORNE ELECTRONICS' AGGREGATE LIABILITY TO CUSTOMER FOR ACTUAL DIRECT DAMAGES FOR ANY CAUSE WHATSOEVER SHALL BE LIMITED TO THE

CUMULATIVE PRODUCT COSTS PAID BY THAT CUSTOMER FOR THE PRODUCT CAUSING SUCH DAMAGES, IF ANY.

This Warranty gives Customer specific rights, and Customer may also have other rights that vary from jurisdiction to jurisdiction.

To obtain Warranty service, Customer must call Borne Electronics Support prior to making a Product Return. Customer must include with Product Return the following items: (i) a dated sales receipt that indicates the place of purchase, model number of Product, and amount paid; (ii) a detailed description of Customer's problem with Product; (iii) Customer's full name, phone number, and return address, and; (iv) a money order for any applicable shipping costs made out to Edco Electronics Inc. to cover return shipping charges to US and Canadian destinations only. Borne Electronics will not make return shipments to a P.O. Box. For shipping to international addresses, actual freight will be charged to Customer. Failure to enclose any of these items may delay the processing of your Warranty claim. Return your Product freight-prepaid in its original packaging, or packaging that affords an equal measure of protection. Please allow 4 to 6 weeks for the processing of your claim.

Edco Electronics Inc.  
8484 Esplanade  
Montreal, Quebec H2P 2R7  
Canada  
Toll Free: 1-800-593-6669 (Monday to Friday: 9am to 5pm EST)  
Email: [support@borne-lifestyle.com](mailto:support@borne-lifestyle.com)

#### FCC Warning Statement

Changes or modifications not expressly approved by the party responsible for compliance could void the user's authority to operate the equipment. This equipment has been tested and found to comply with the limits for a Class B digital device, pursuant to Part 15 of the FCC Rules. These limits are designed to provide reasonable protection against harmful interference in a residential installation. This equipment generates uses and can radiate radio frequency energy and, if not installed and used in accordance with the instructions, may cause harmful interference to radio communications. However, there is no guarantee that interference will not occur in a particular installation. If this equipment does cause harmful interference to radio or television reception, which can be determined by turning the equipment off and on, the user is encouraged to try to correct the interference by one or more of the following measures:

- - Reorient or relocate the receiving antenna.
- - Increase the separation between the equipment and receiver.
- - Connect the equipment into an outlet on a circuit different from that to which the receiver is connected.
- - Consult the dealer or an experienced radio/TV technician for help.

This device complies with part 15 of the FCC Rules. Operation is subject to the following two conditions: (1) This device may not cause harmful interference, and (2) this device must accept any interference received, including interference that may cause undesired operation.