

The user manual

Multi-function bluetooth speakers

1. Multi-function bluetooth speakers make you enjoy the charm of music at any time!
2. New loudspeakers with mini aluminum vibrating diaphragm, clear high voice and pure low voice design, makes the sound quality more outstanding!
3. USB interface ,DC 5V adapter, letting you enjoy music ,eliminating worry anytime and anywhere!

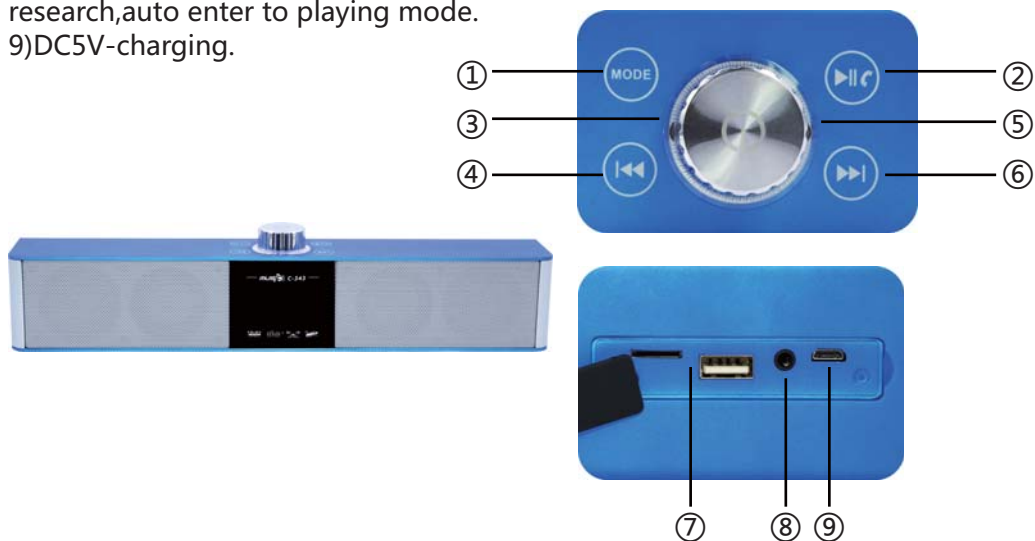
1) Mode-mode change.

Music Mode

- 2) PLAY/PAUSE-song play or puse.
- 3) OFF/ON - Rotate to OFF position, auto cut down the power, swift to ON position, audio output.
- 4) PREV-Last song.
- 5) VOL-/+ Volume up/down.
- 6) NEXT-Next song.
- 7) USB/TF-letting you enjoy music.

FM Mode

- 8) AUX-Connect 3.5mm line ,short press Mode, Choose FM Mode, Short Press button, Starting to auto searching ,after finishing research, auto enter to playing mode.
- 9) DC5V-charging.



FCC Warning

This device complies with Part 15 of the FCC Rules. Operation is subject to the following two conditions:

(1) This device may not cause harmful interference, and (2) this device must accept any interference received, including interference that may cause undesired operation.

NOTE 1: This equipment has been tested and found to comply with the limits for a Class B digital device, pursuant to part 15 of the FCC Rules. These limits are designed to provide reasonable protection against harmful interference in a residential installation. This equipment generates, uses and can radiate radio frequency energy and, if not installed and used in accordance with the instructions, may cause harmful interference to radio communications. However, there is no guarantee that interference will not occur in a particular installation. If this equipment does cause harmful interference to radio or television reception, which can be determined by turning the equipment off and on, the user is encouraged to try to correct the interference by one or more of the following measures:

- Reorient or relocate the receiving antenna.
- Increase the separation between the equipment and receiver.
- Connect the equipment into an outlet on a circuit different from that to which the receiver is connected.
- Consult the dealer or an experienced radio/TV technician for help.

NOTE 2: Any changes or modifications to this unit not expressly approved by the party responsible for compliance could void the user's authority to operate the equipment.