



Feature

- ※ High gain
- ※ Omani-directional
- ※ Wide bandwidth

Main Antenna

Application

※GSM850/900/DCS/PCS/WCDMAB1/B2/B4/B5/B8
LTE B1/B2/B3/B4/B5/B7/B8/B12/B13/B17/B28/B38/B41/B66
communication applications

Name and address of the antenna manufacturer	Model number of the antenna
Huizhou Speed Wireless Technology Co.,Ltd. No. 138, Huize Avenue, Dongjiang High-tech Industrial Park, Zhongkai High-tech Zone, Huizhou City	MAIN: S665L-ANT3-V0.11-SPD-2307 DIV: S665L-ANT2-V0.11-SPD-2307 3IN1: S665L-ANT1-V0.15-SPD-2307

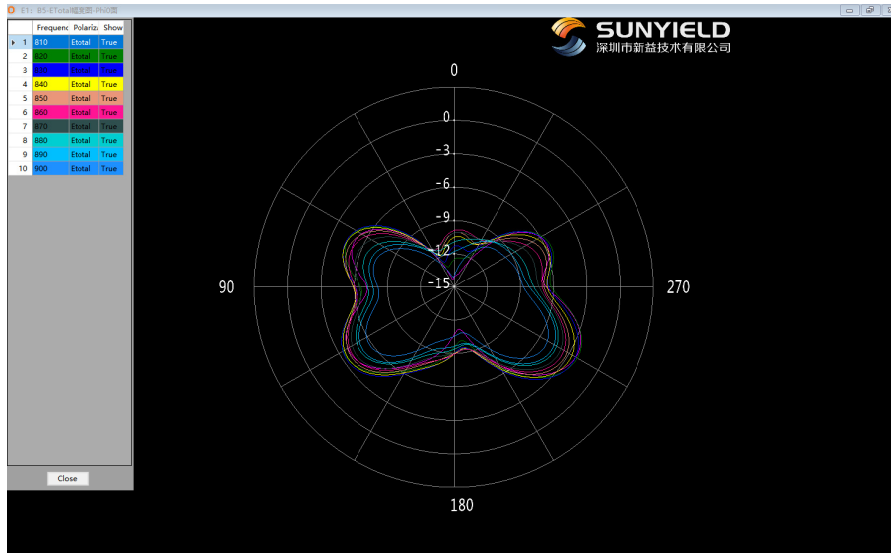


Transmitter Frequency	GSM 850/WCDMA B5/LTE B5: 824 – 849 MHz
	GSM 900/WCDMA B8/LTE B8: 880 – 915 MHz
	DCS /WCDMA B4/LTE B3/B4/B66: 1710 – 1785 MHz
	PCS/WCDMA B2/LTE B2:1850-1910MHz
	WCDMA B1/LTE B1: 1920 – 1980MHz
	LTE B7:2496-2565MHz
	LTE B38: 2570-2620MHz
	LTE B41: 2535-2655MHz
	LTE B12:699-716MHz
	LTE B13:777-787MHz
LTE B17/B28:710-755MHz	
Receiver Frequency	GSM 850/WCDMA B5/LTE B5: 869 – 894 MHz
	GSM 900/WCDMA B8/LTE B8: 925 – 960 MHz
	DCS/LTE B3/B66: 1805 – 1880 MHz
	WCDMA 4/LTE B4: 2110-2155 MHz
	PCS/WCDMA B2/LTE B2:1930-1990MHz
	WCDMA B1/LTE B1: 2110 – 2170MHz
	LTE B7:2620-2690MHz
	LTE B12:729-746MHz
	LTE B13:746-756MHz
	LTE B38: 2570-2620MHz
	LTE B41: 2535-2655MHz
	LTE B17/B28:758-803MHz
Main Antenna Gain (Peak Gain)	GSM 850/WCDMA B5/LTE B5: -2.1dBi
	GSM 900/WCDMA B8/LTE B8: -3.5dBi
	DCS/WCDMA B4/ LTE B3/B4/B66: -0.5dBi
	PCS/WCDMA B2/LTE B2: -0.1dBi
	WCDMA B1/LTE B1: -0.1dBi
	LTE B7/B38/B41: -0.1dBi
	LTE B12/B13/B17/B28:-3.3dBi
3in1 Antenna Gain (Peak Gain)	BT/2.4G Wi-Fi:2.4dBi, 5G Wi-Fi: 0.5dBi

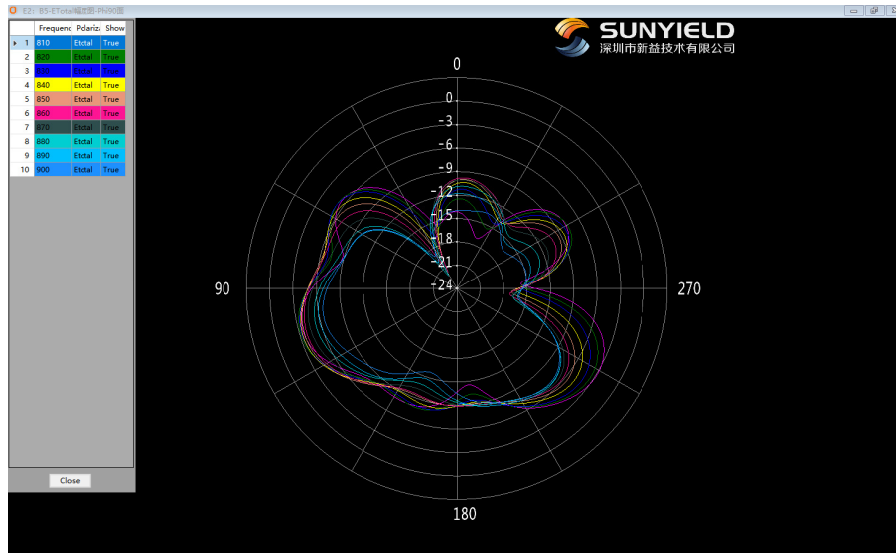


※ Antenna Gain

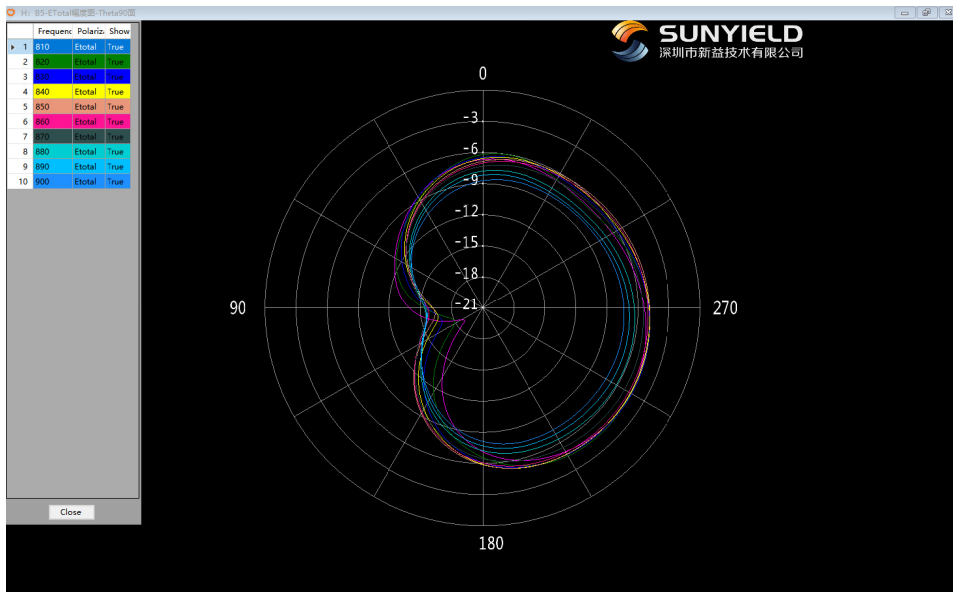
Main Antenna



GSM850 / WCDMA B5 / LTE B5 Phi=0deg



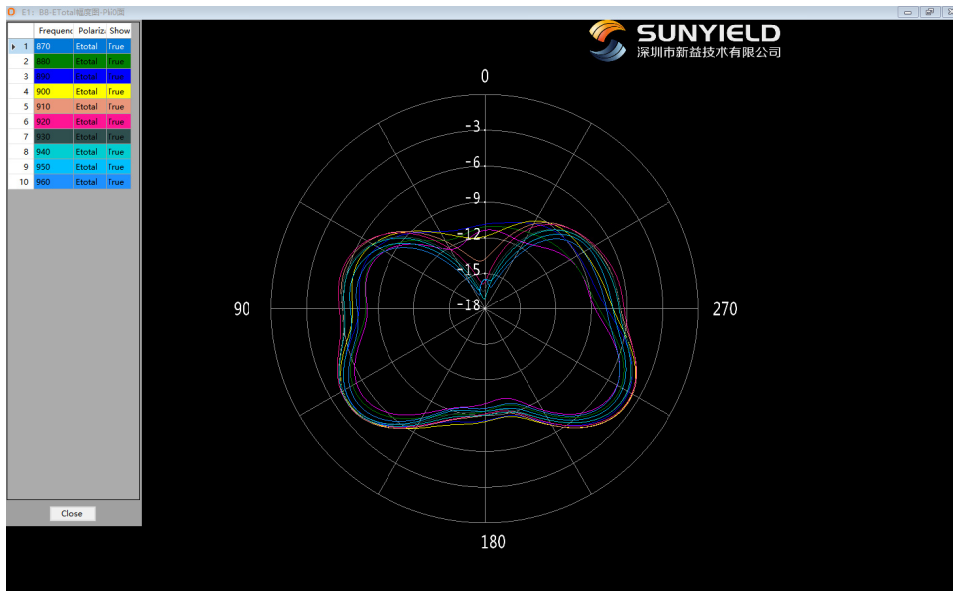
GSM850 / WCDMA B5 / LTE B5 Phi=90deg



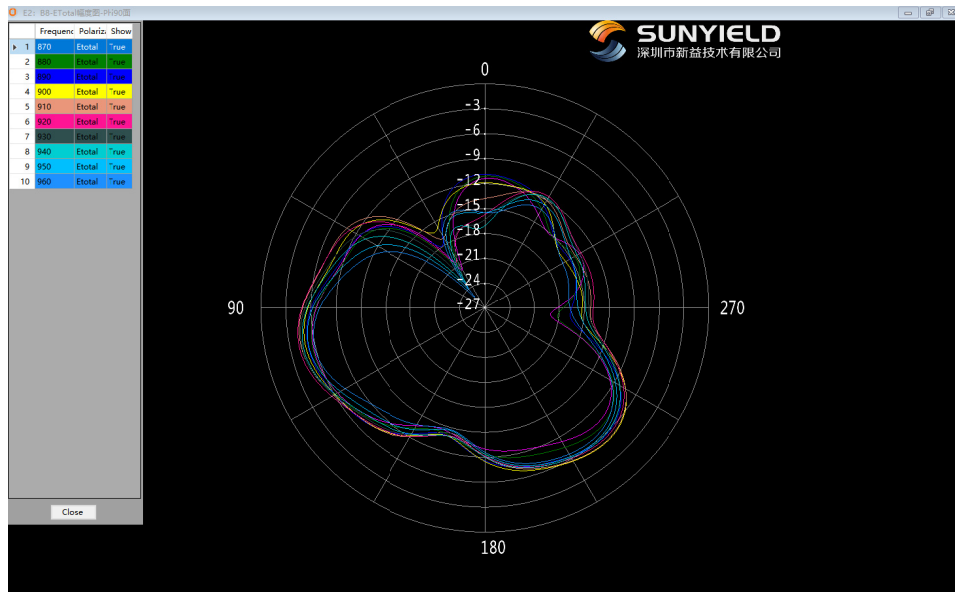
GSM850 / WCDMA B5 / LTE B5 Theta=90deg

✧ Antenna Gain

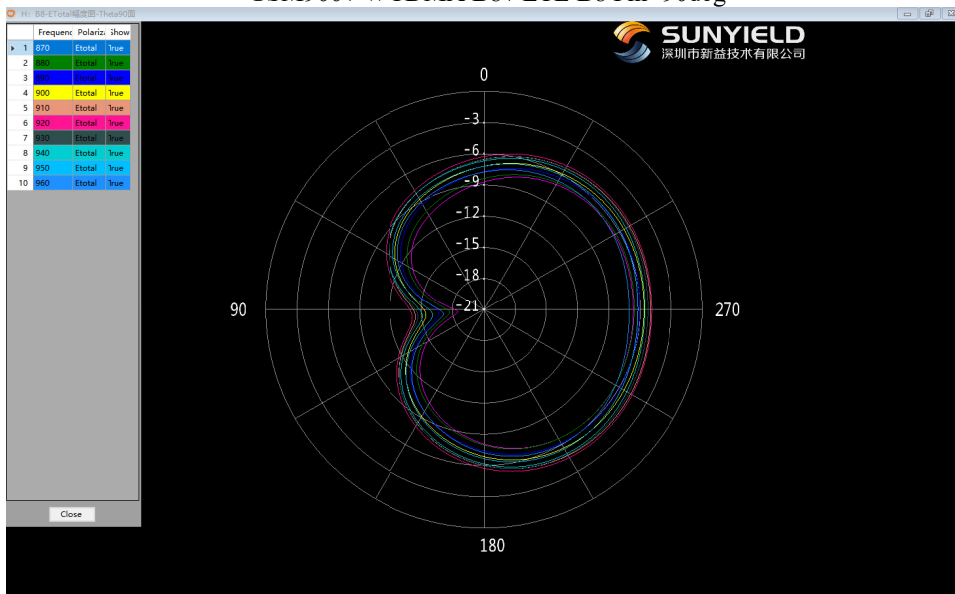
Main Antenna



GSM900 / WCDMA B8 / LTE B8 Phi=0deg



GSM900 / WCDMA B8 / LTE B8 Phi=90deg

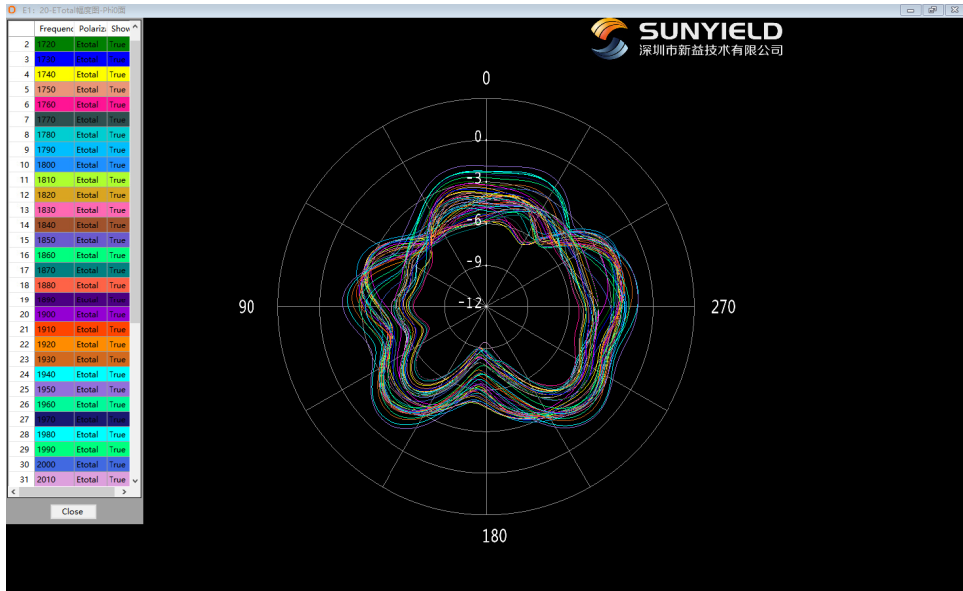


GSM900 / WCDMA B8 / LTE B8 Theta=90deg

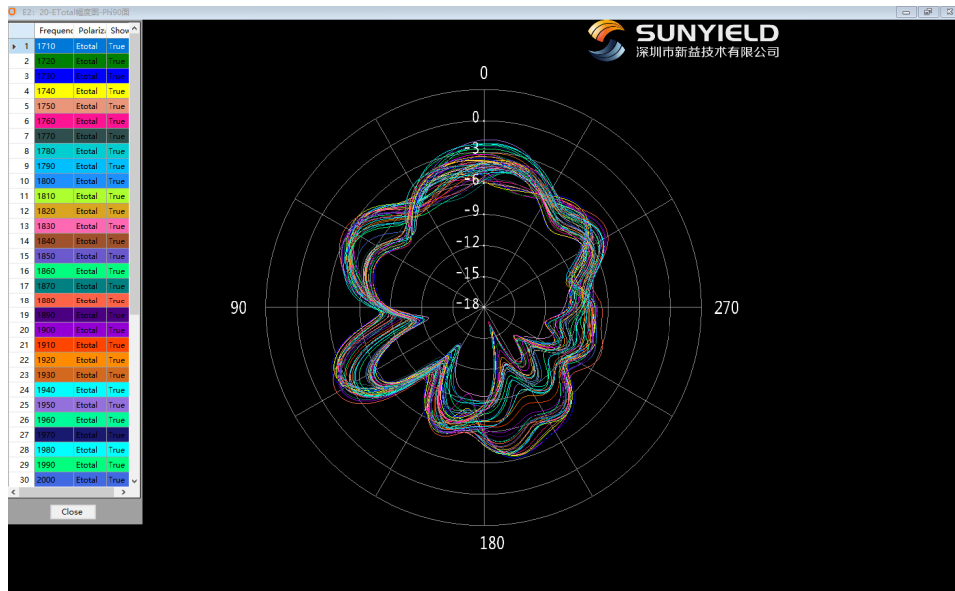


※ Antenna Gain

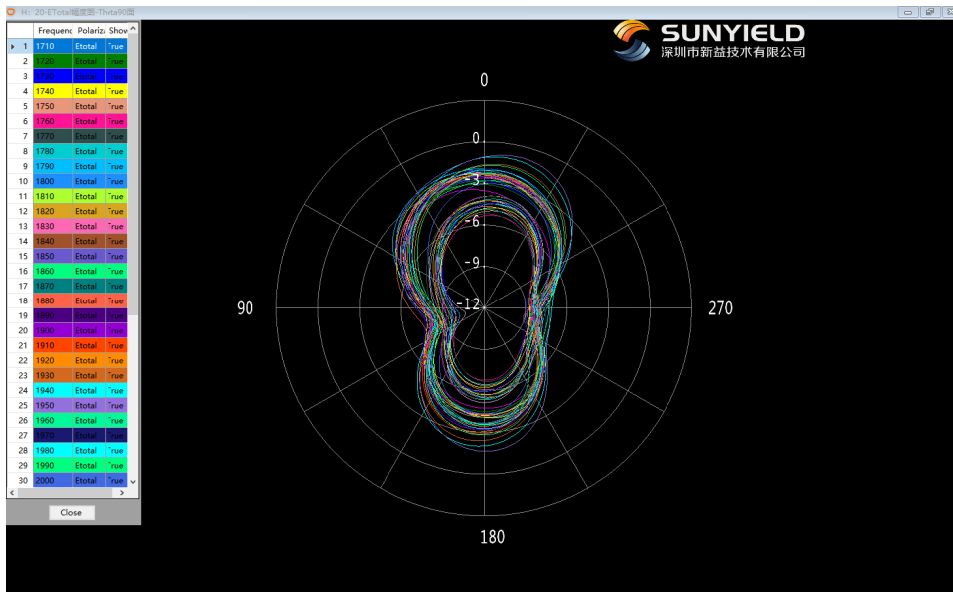
Main Antenna



DCS1800/PCS1900/WCDMA B1/B2/B4/ LTE B1/B2/B3/B4/B66 Phi=0deg



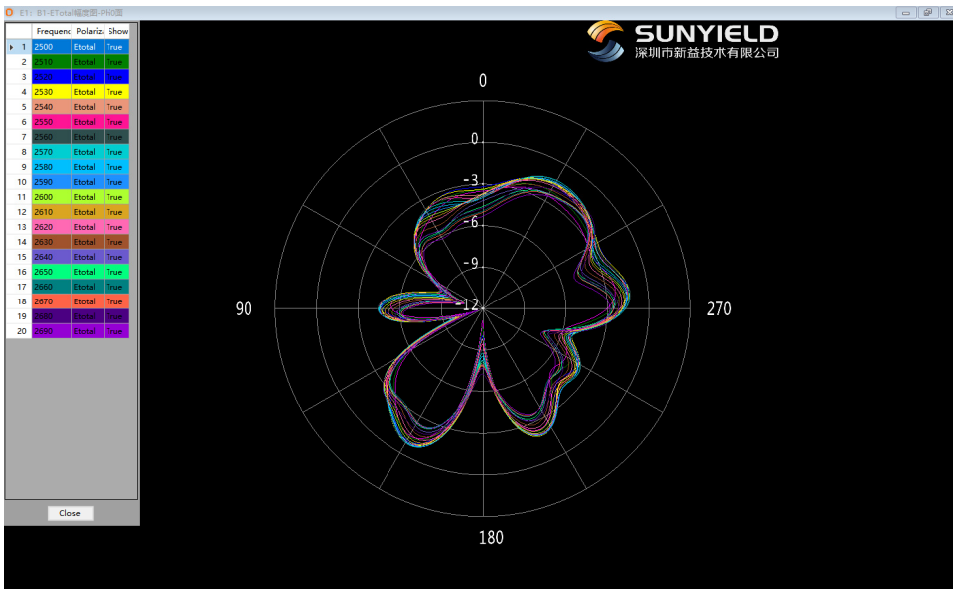
DCS1800/PCS1900/WCDMA B1/B2/B4/ LTE B1/B2/B3/B4/B66 Phi=90deg



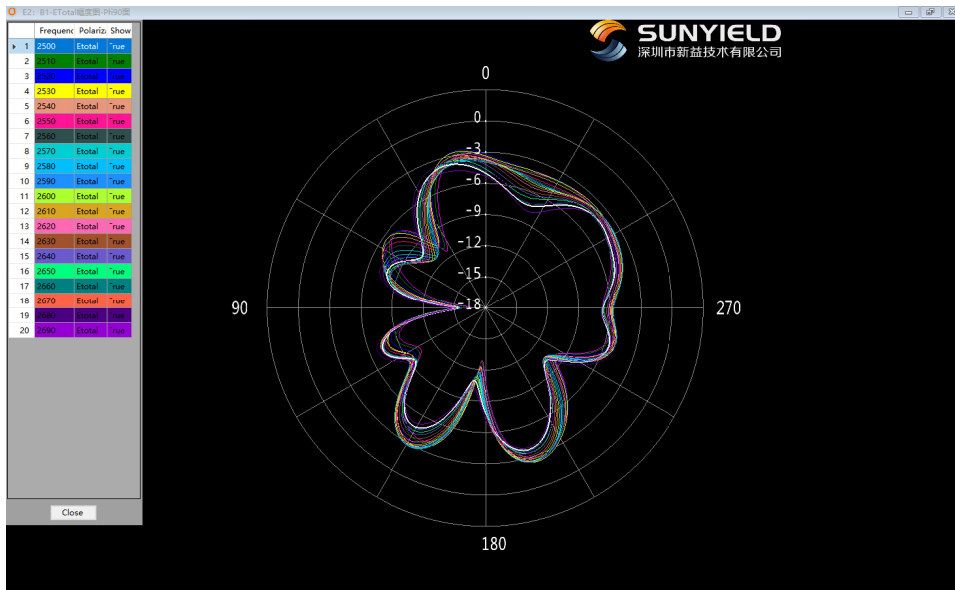
DCS1800/PCS1900/WCDMA B1/B2/B4/ LTE B1/B2/B3/B4/B66 Theta=90deg

✂ Antenna Gain

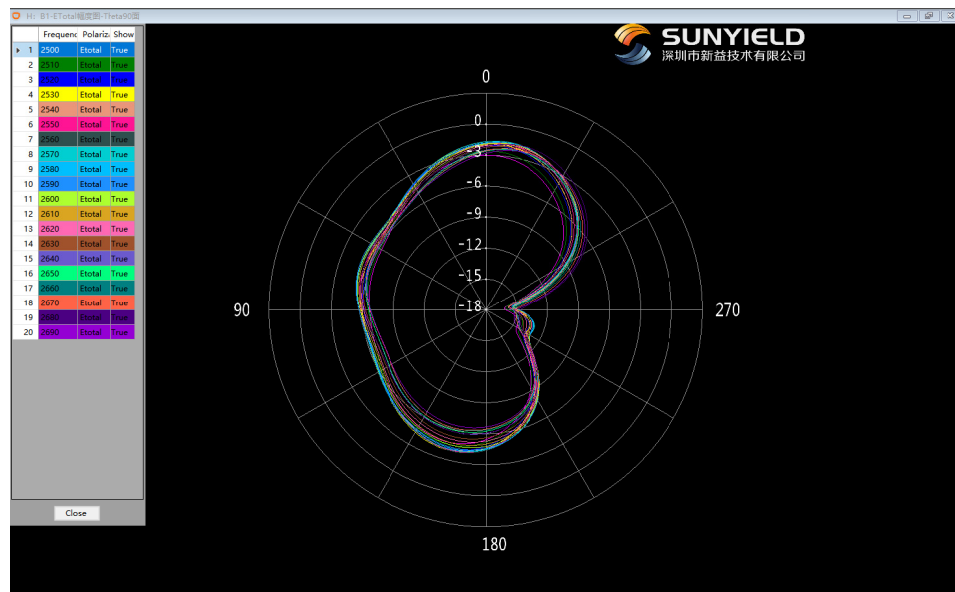
Main Antenna



LTE B7/B38/41 Phi=0deg



LTE B7/B38/41 Phi=90deg

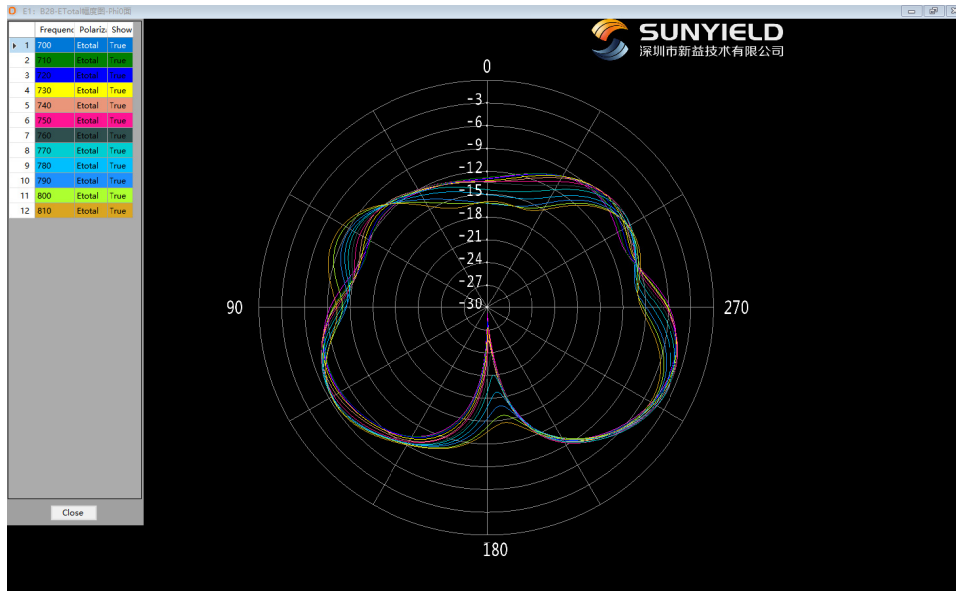


LTE B7/B38/41 Theta=90deg

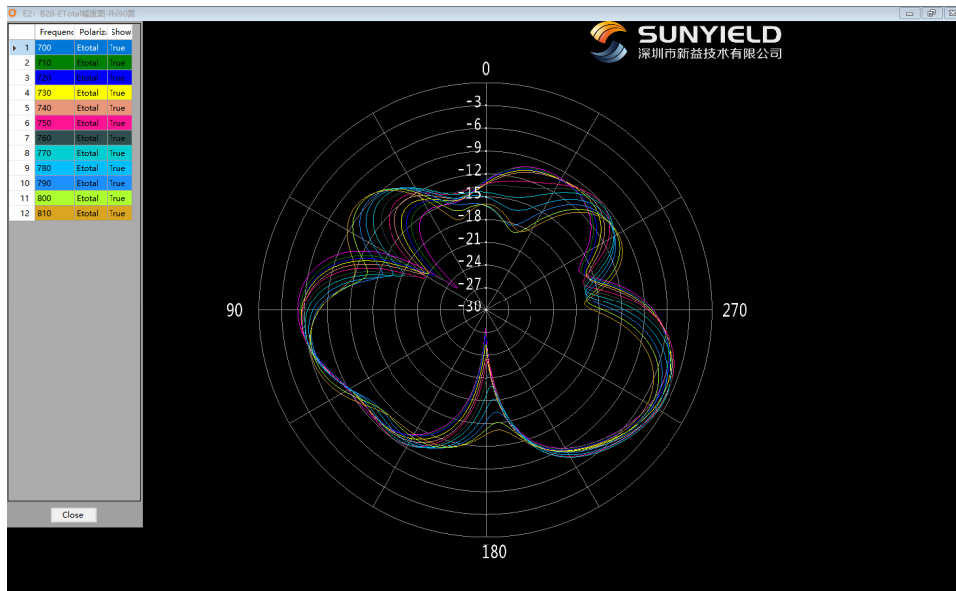


※ Antenna Gain

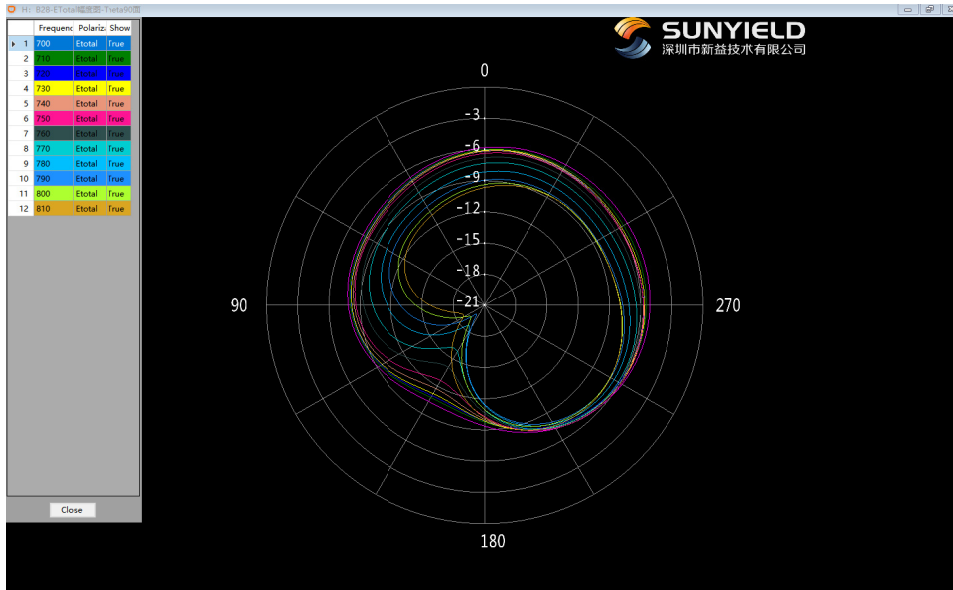
Main Antenna



LTE B12/B13/B17/B28 $\Phi = 0^\circ$



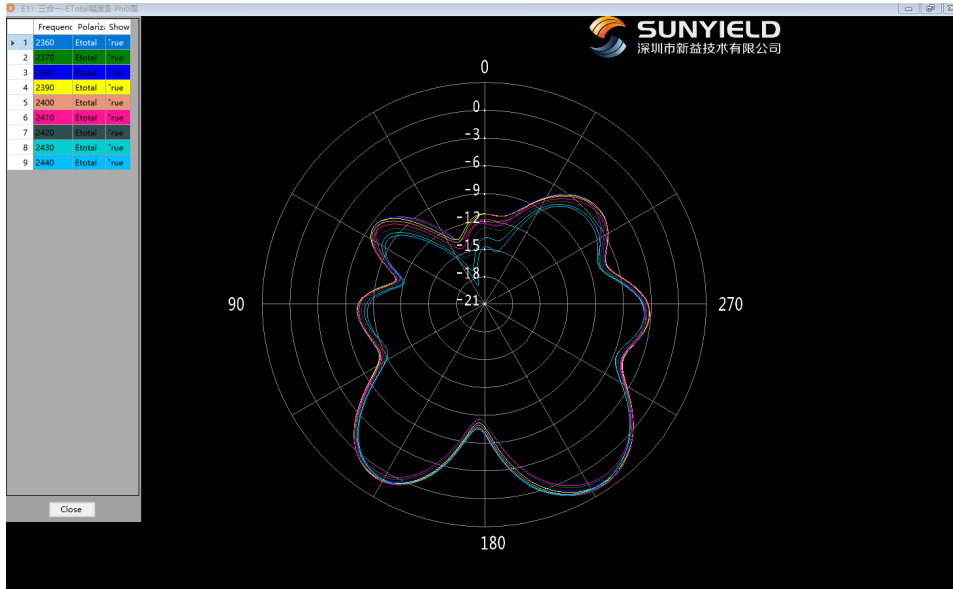
LTE B12/B13/B17/B28 $\Phi = 90^\circ$



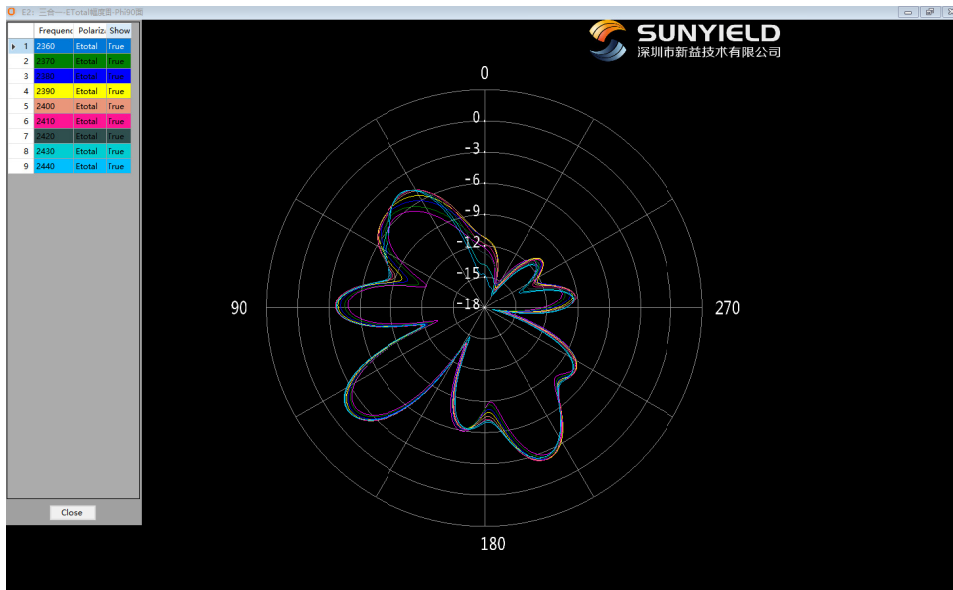
LTE B12/B13/B17/B28 Theta=90deg

✧ Antenna Gain

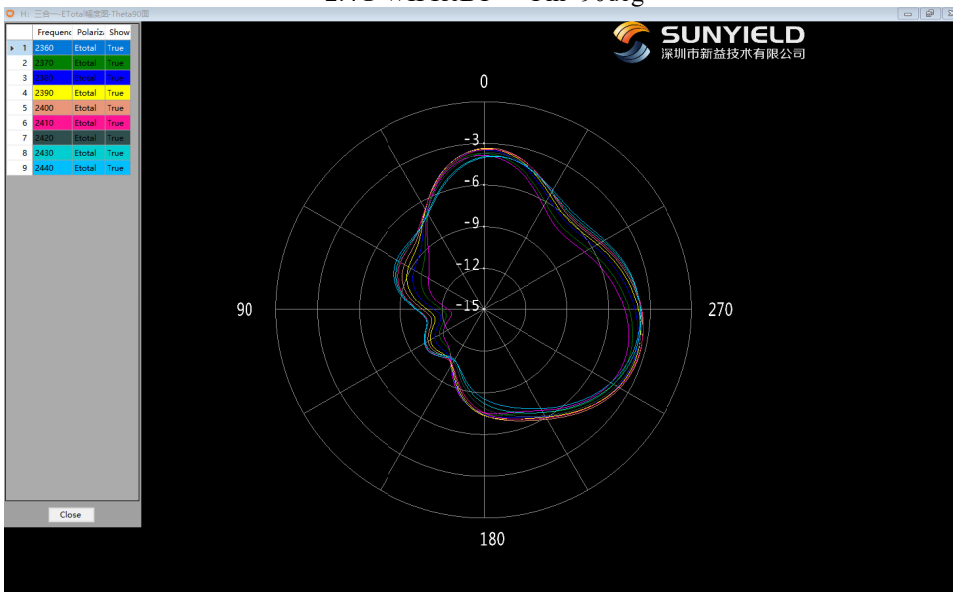
3in1 Antenna



2.4G WIFI&BT Phi=0deg



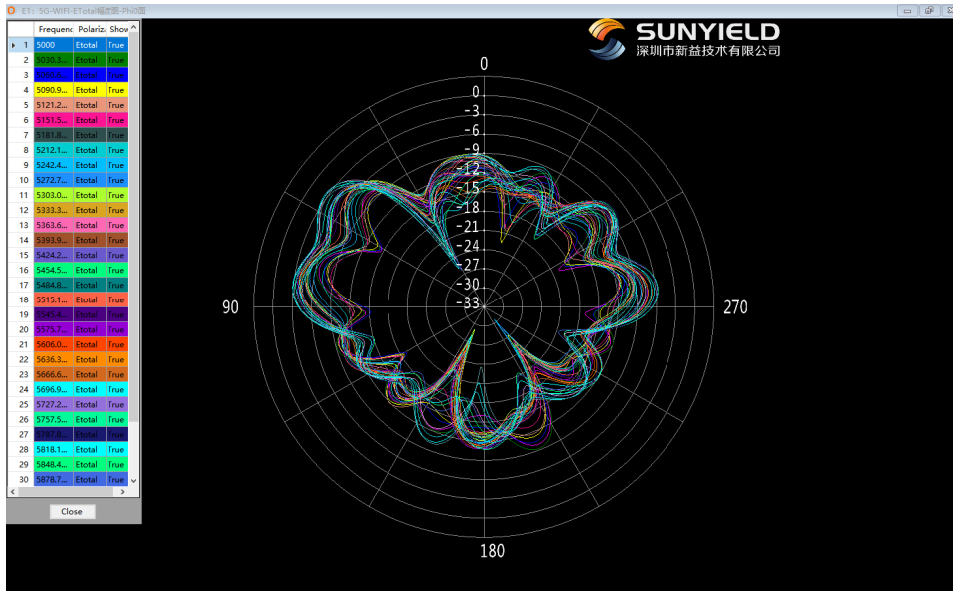
2.4G WIFI&BT Phi=90deg



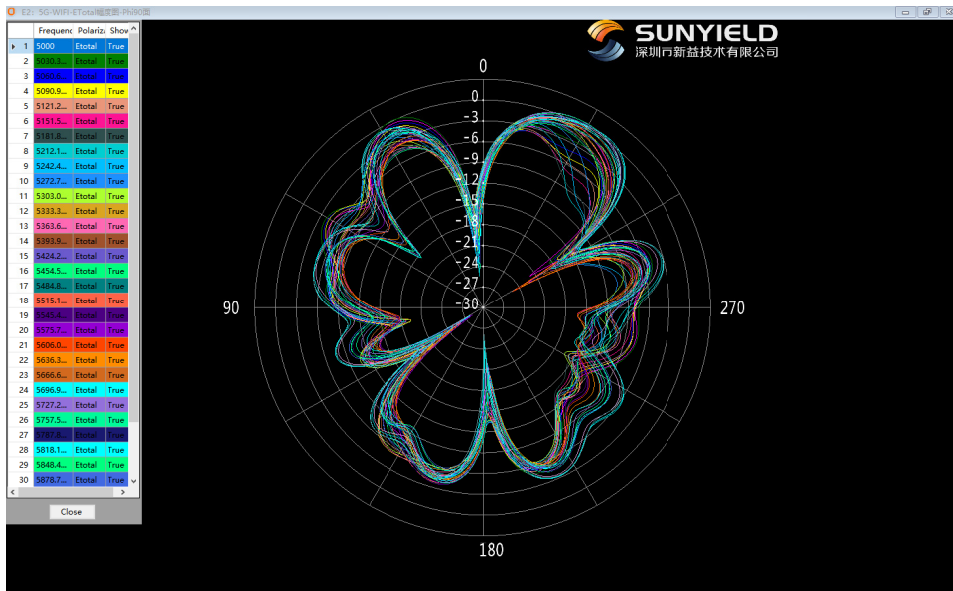
2.4G WIFI&BT Theta=90deg



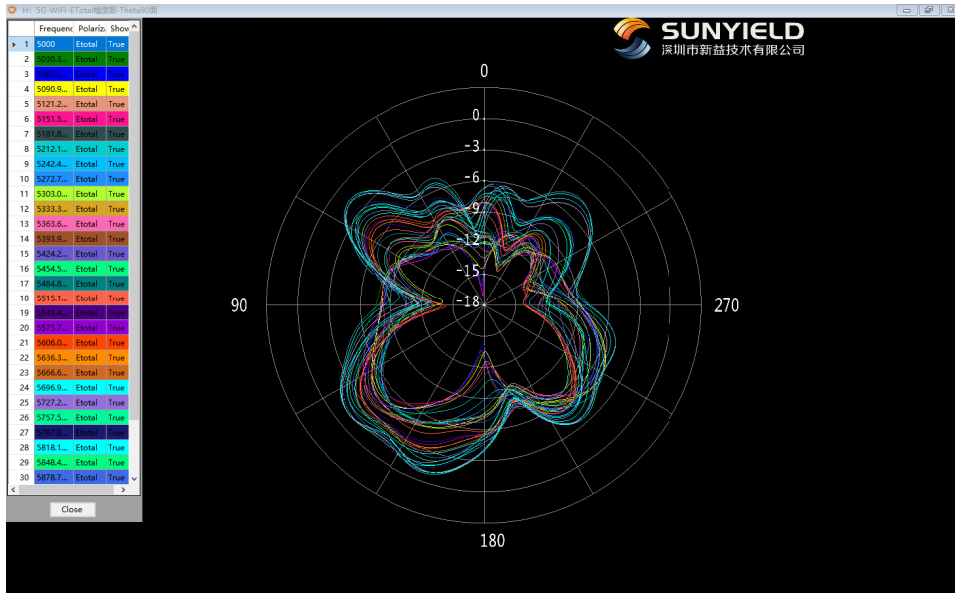
※ Antenna Gain
5G WIFI Antenna



5G WIFI Phi=0deg



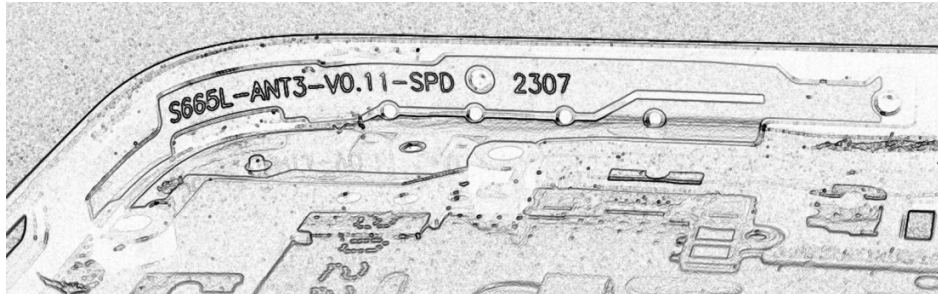
5G WIFI Phi=90deg



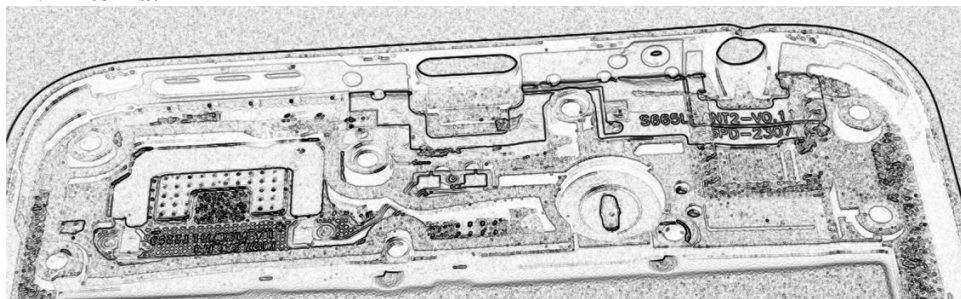
5G WIFI Theta=90deg

Antenna Photo

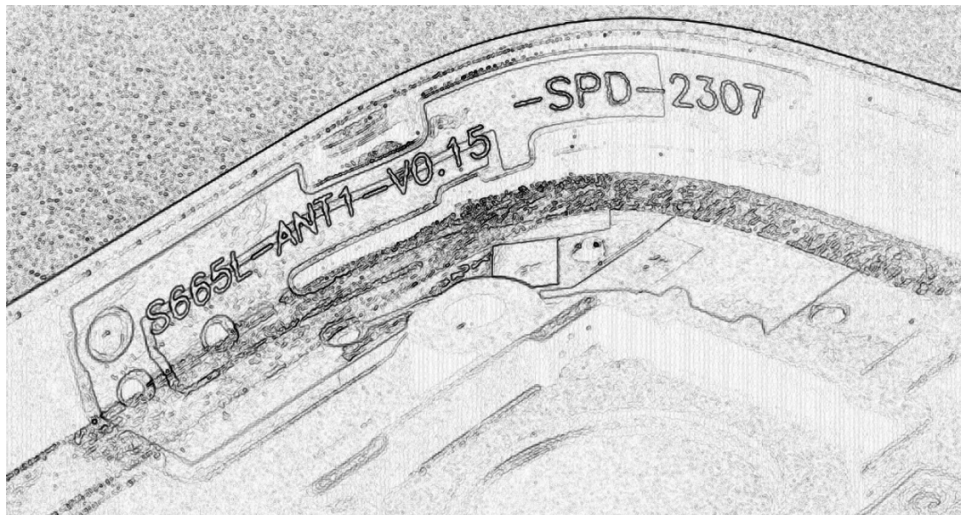
Main Antenna:



DIV Antenna:



3IN1 Antenna:



PREPARED BY	CHECKEDBY	APPROVAL BY	S.R.NO	
	Yuehua.sun		DATE:	2022/12/8