



## Feature

- ※ High gain
- ※ Omani-directional
- ※ Wide bandwidth

Main Antenna

## Application

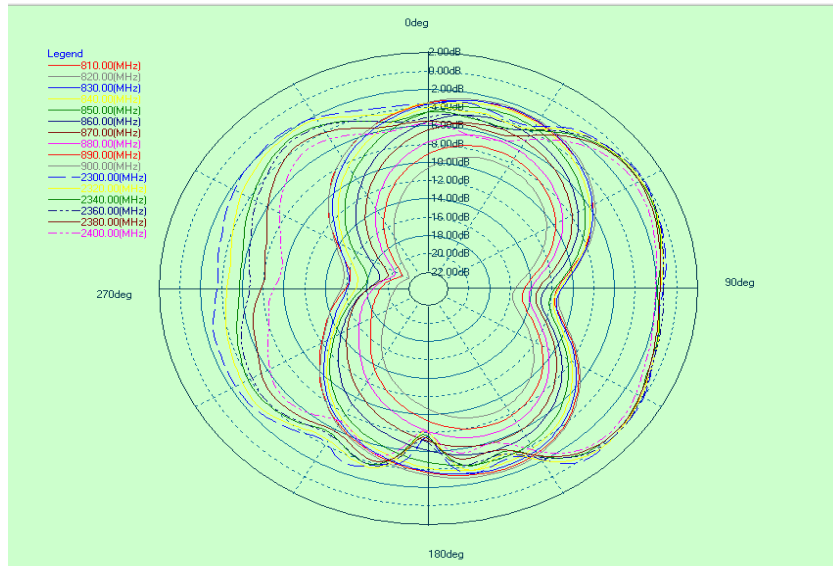
※GSM850/900/DCS/PCS/WCDMA B1/B2/B4/B5/B8  
LTE B1/B2/B3/B4/B5/B7/B8/B12/B17/B28/B38/B41/B66 communication applications

项目	Name and address of the antenna manufacturer	Model number of the antenna
S661LP	name:深圳市威尔创通讯科技有限公司 Shenzhen Wei'erchuang Communication Technology Co.,Ltd. Address:深圳市龙华新区大浪街道同富邨工业区 8 栋 2 楼 Building 8, Tongfu Estate Industrial Zone, Dalang Community, Dalang Street, Longhua District, Shenzhen	S661L-MIAN;S661L-DIV;S661L-3IN1

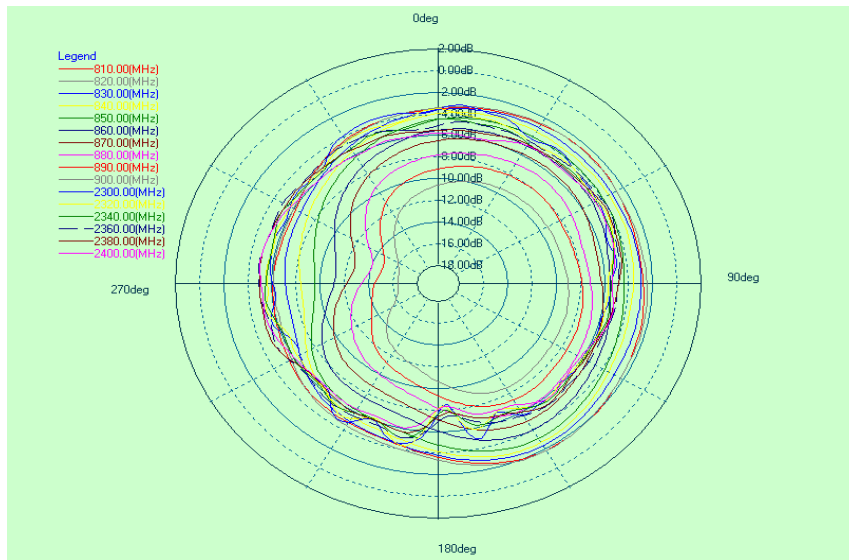
TYPE	
Transmitter Frequency	GSM 850/WCDMA B5/LTE B5: 824 - 849 MHz
	GSM 900/W8/LTE B8: 880 - 915 MHz
	DCS /WCDMA B4/LTE B3/B4/B66: 1710 - 1785 MHz
	PCS/WCDMA B2/LTE B2:1850-1910MHz
	WCDMA B1/LTE B1: 1920 - 1980MHz
	LTE B7:2496-2565MHz
	LTE B38/B41:2565-2645MHz
	LTE B12/B17/B28:710-755MHz
Receiver Frequency	GSM 850/WCDMA B5/LTE B5: 869 - 894 MHz
	GSM 900/W8/LTE B8: 925 - 960 MHz
	DCS/LTE B3: 1805 - 1880 MHz
	WCDMA 4/LTE B4/B66: 2110-2155 MHz
	PCS/WCDMA B2/LTE B2:1930-1990MHz
	WCDMA B1/LTE B1: 2110 - 2170MHz
	LTE B7:2620-2690MHz
	LTE B38/41:2565-2645MHz
LTE B12/B17/B28:758-790MHz	
Main Antenna Gain (Peak Gain)	GSM 850/WCDMA B5/LTE B5: -1.6dBi
	GSM 900/W8/LTE B8: -1.4dBi
	DCS/WCDMA B4/ LTE B3/B4/B66: -0.7dBi
	PCS/WCDMA B2/LTE B2: -0.5dBi
	WCDMA B1/LTE B1: -0.5dBi
	LTE B7/B38/B41: -0.4dBi
	LTE B12/B17/B28:-1.9dBi
3in1 Antenna Gain (Peak Gain)	GPS:0.65dBi
	WIFI 2.4G/Bluetooth:1.2dBi

## ※ Antenna Gain

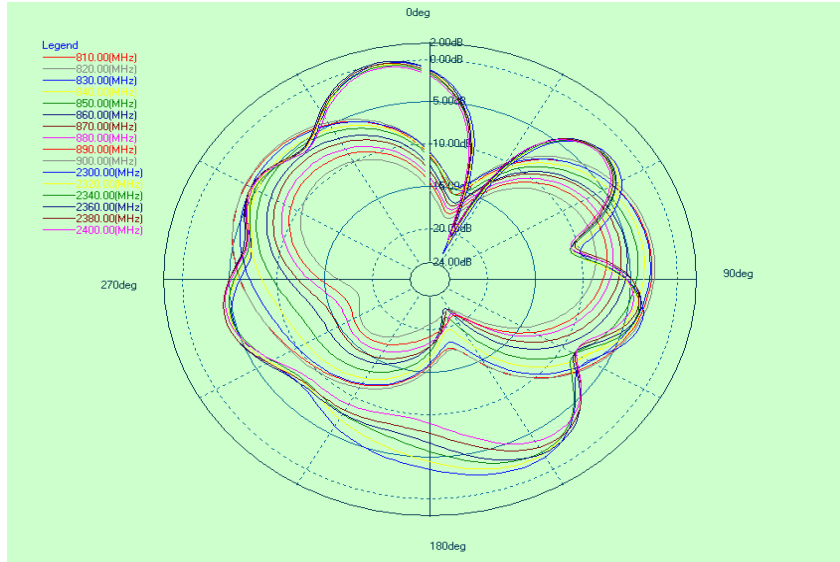
### Main Antenna



GSM850 / WCDMA B5 / LTE B5/B20 Phi=0deg



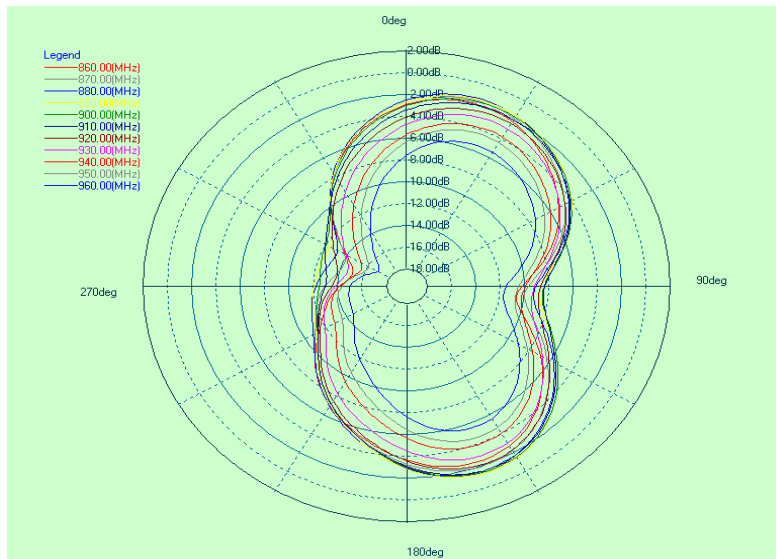
GSM850 / WCDMA B5 / LTE B5/B20 Phi=90deg



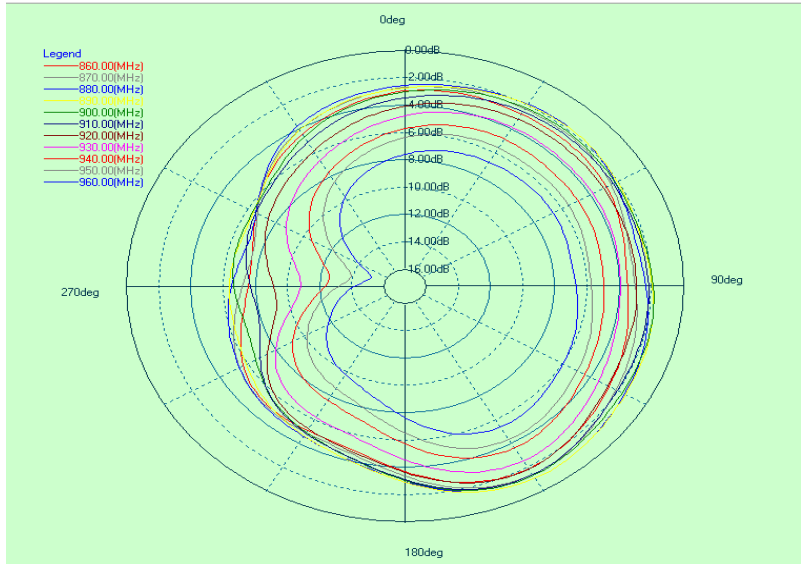
GSM850 / WCDMA B5 / LTE B5/B20 Theta=90deg

## ✂ Antenna Gain

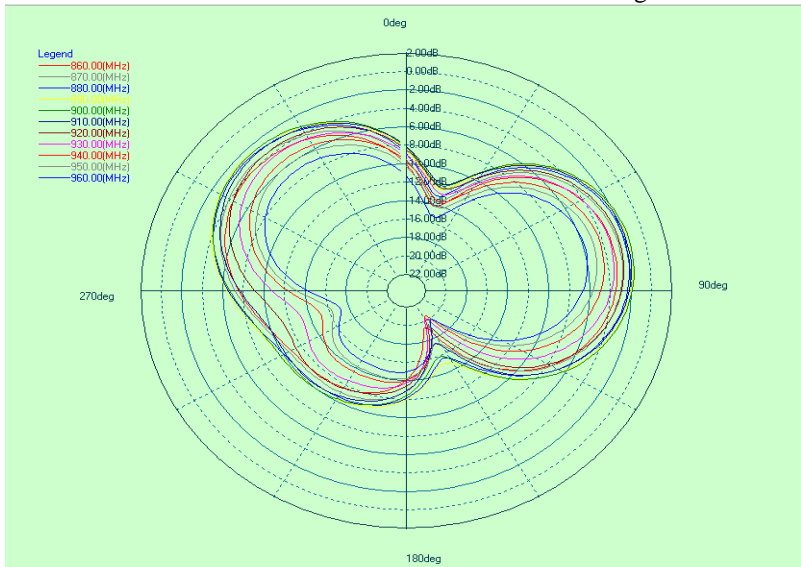
Main Antenna



GSM900 / WCDMA B8 / LTE B8 Phi=0deg



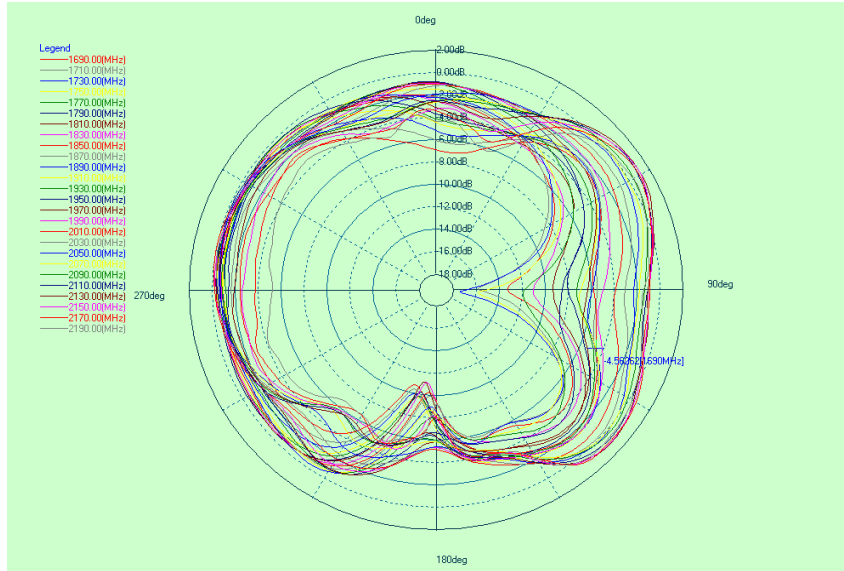
GSM900 / WCDMA B8 / LTE B8 Phi=90deg



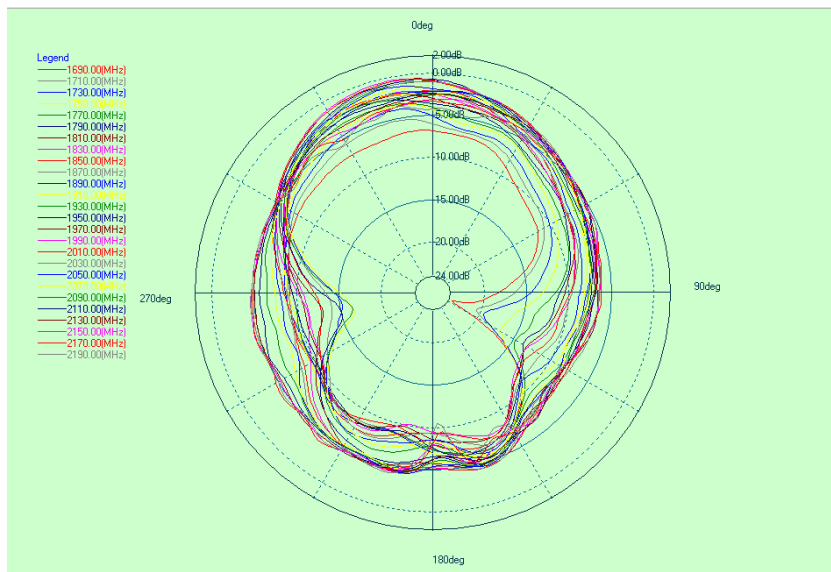
GSM900 / WCDMA B8 / LTE B8 Theta=90deg

※ Antenna Gain

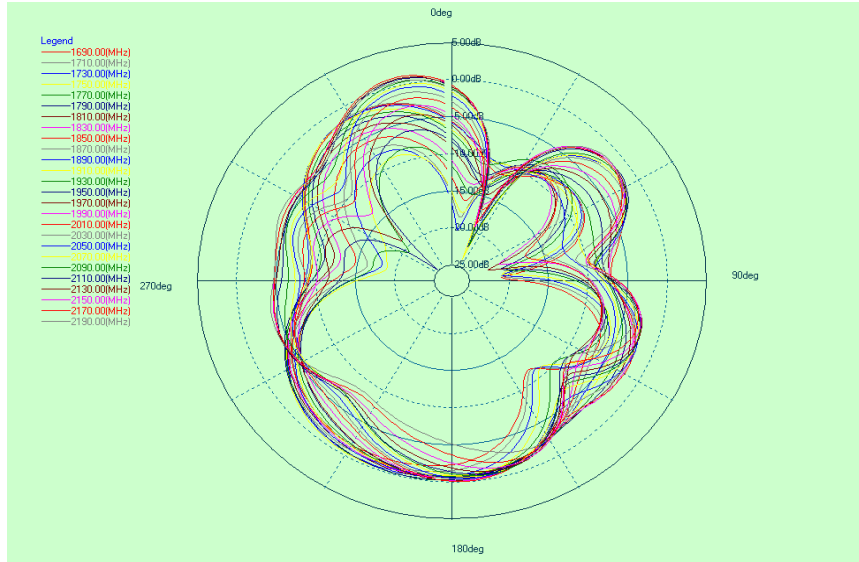
Main Antenna



DCS1800/PCS1900/WCDMA B1/B2/B4/ LTE B1/B2/B3/B4/B66 Phi=0deg



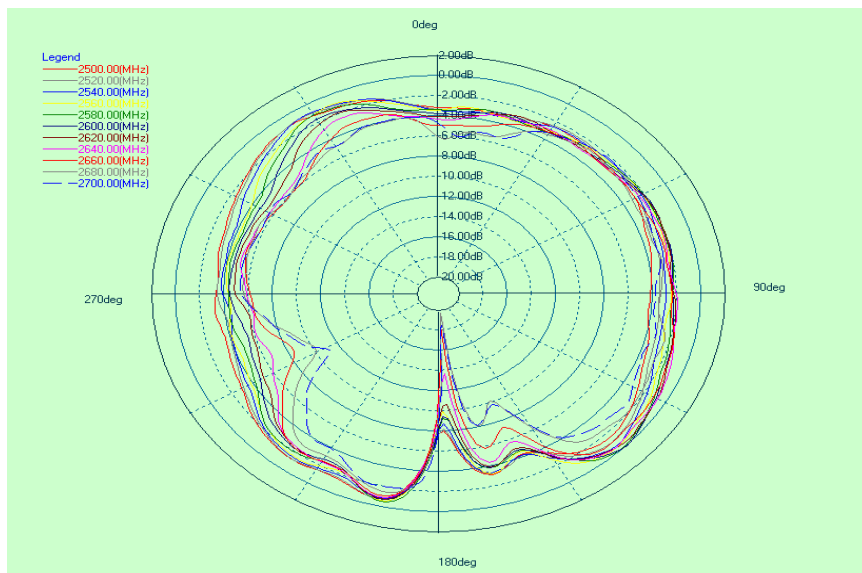
DCS1800/PCS1900/WCDMA B1/B2/B4/ LTE B1/B2/B3/B4/B66 Phi=90deg



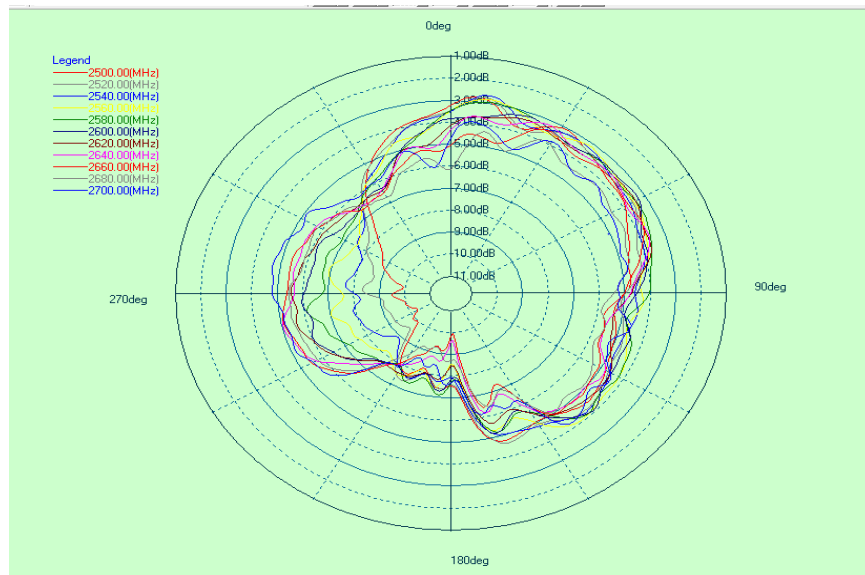
DCS1800/PCS1900/WCDMA B1/B2/B4/ LTE B1/B2/B3/B4/B66 Theta=90deg

※ Antenna Gain

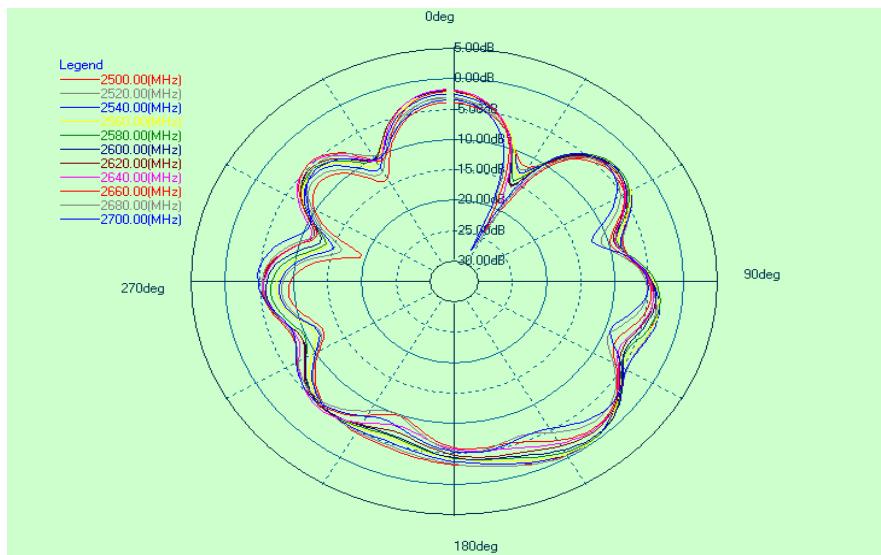
Main Antenna



LTE B7/B38/41 Phi=0deg



LTE B7/B38/41  $\Phi=90^\circ$

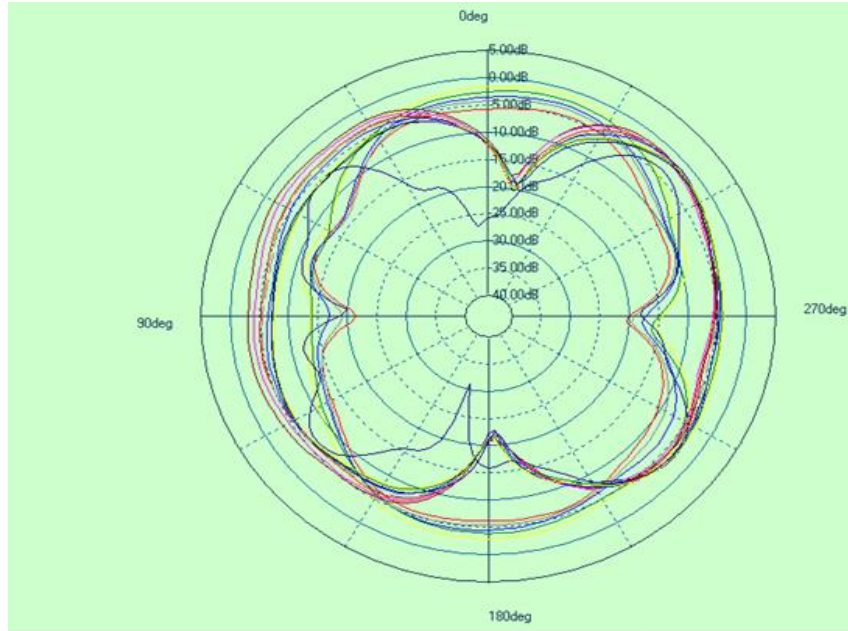


LTE B7/B38/41  $\Theta=90^\circ$

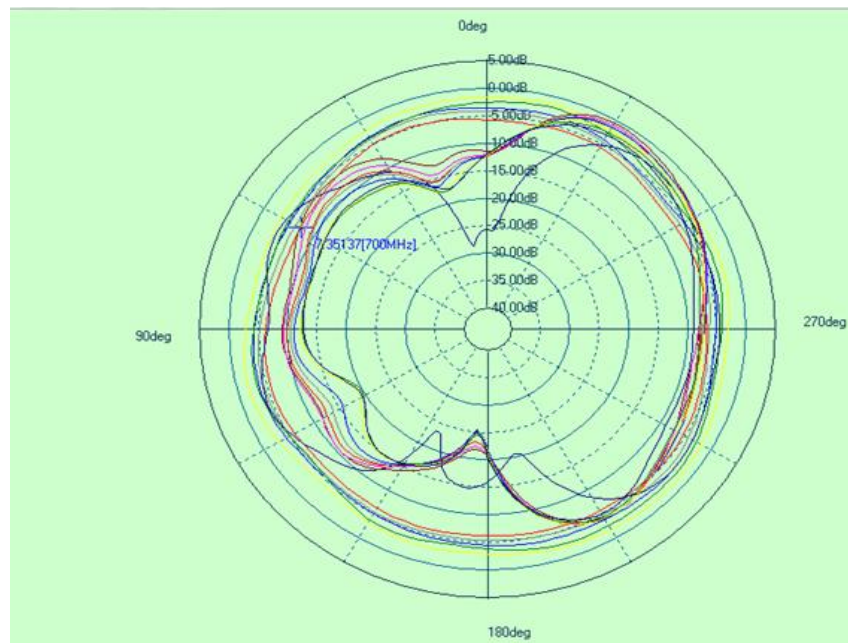
※ Antenna Gain

Main Antenna

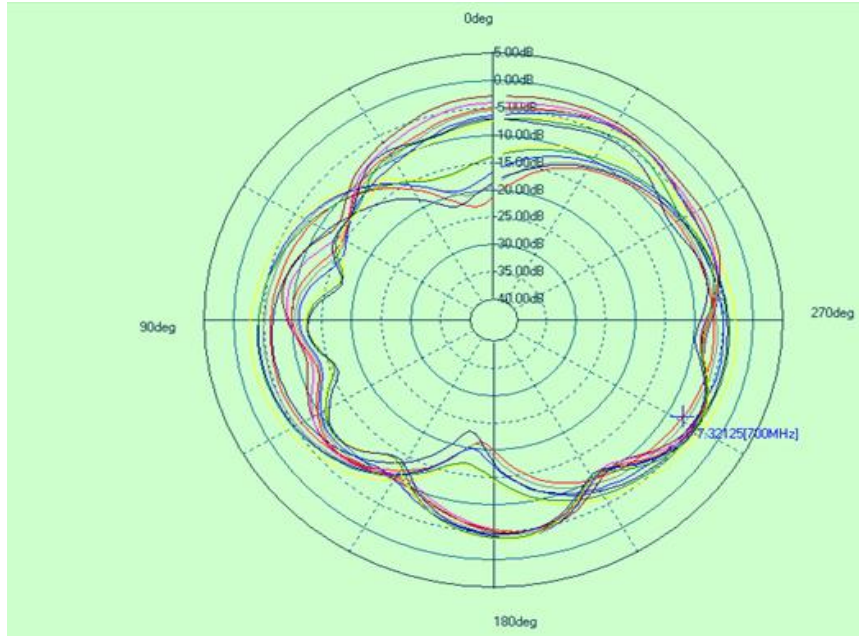




LTE B12/B17/B28  $\Phi=0^\circ$



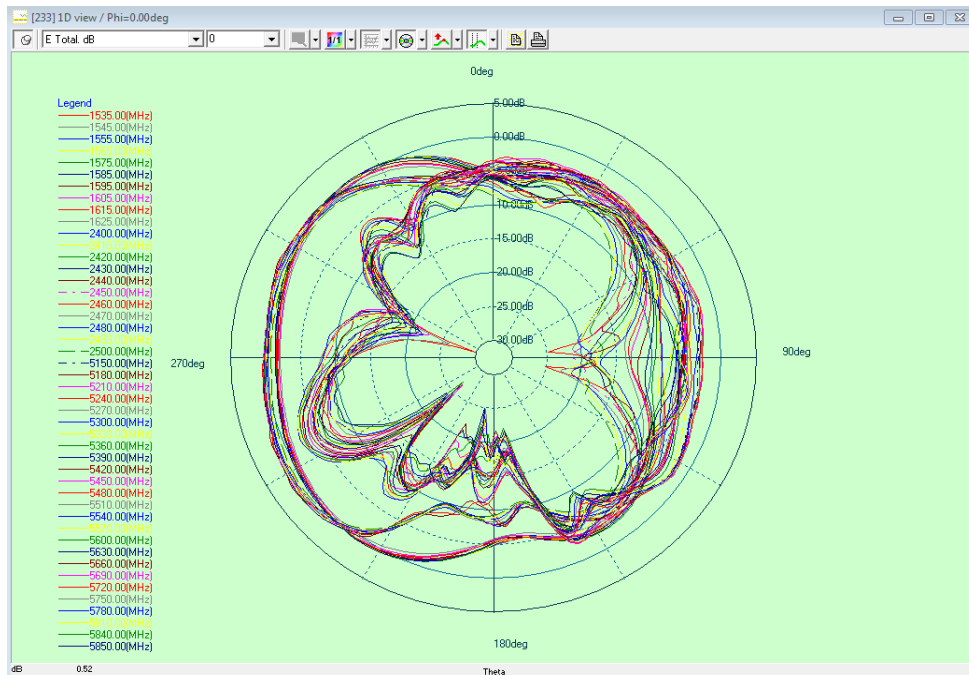
LTE B12/B17/B28  $\Phi=90^\circ$



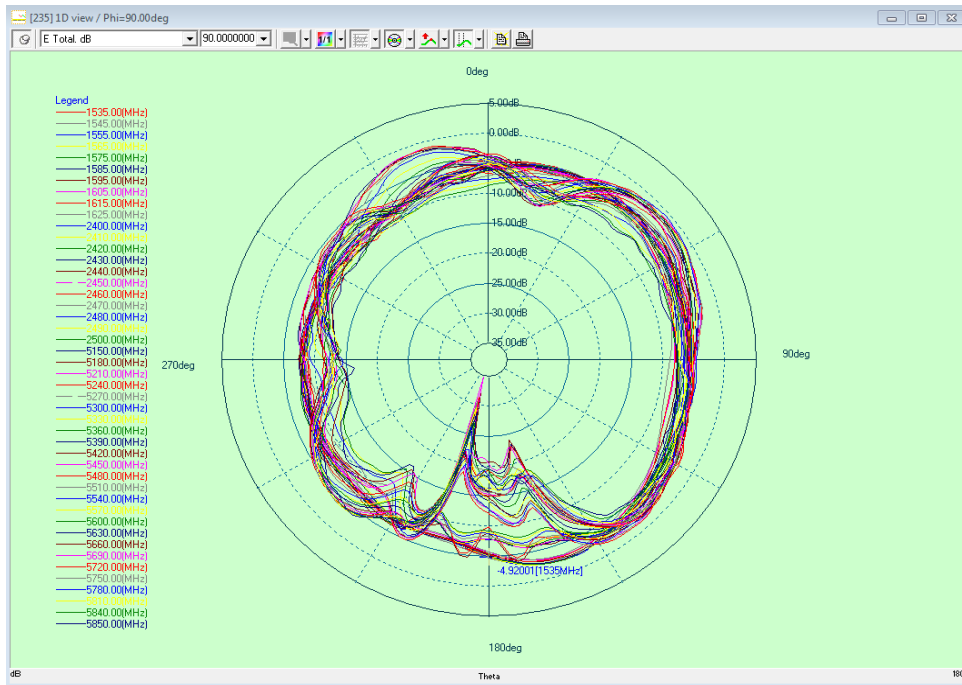
LTE B12/B17/B28 Theta=90deg

## ※ Antenna Gain

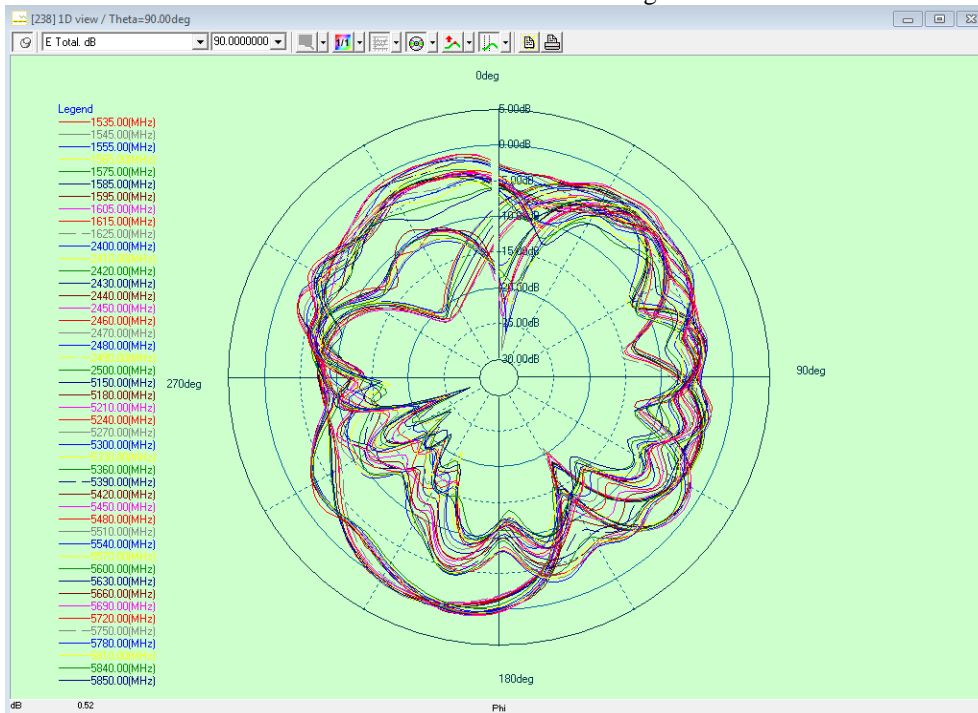
3in1 Antenna



GPS&2.4G WIFI Phi=0deg



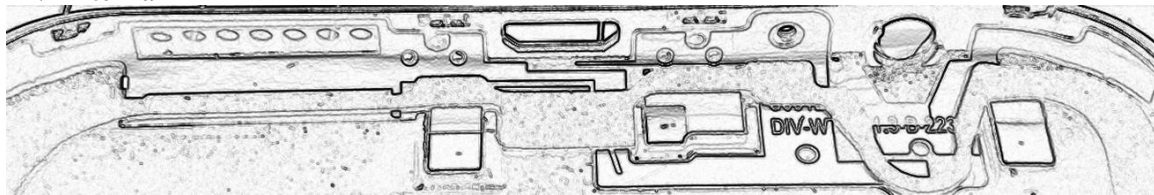
GPS&2.4G WIFI Phi=90deg



GPS&2.4G WIFI Theta=90deg

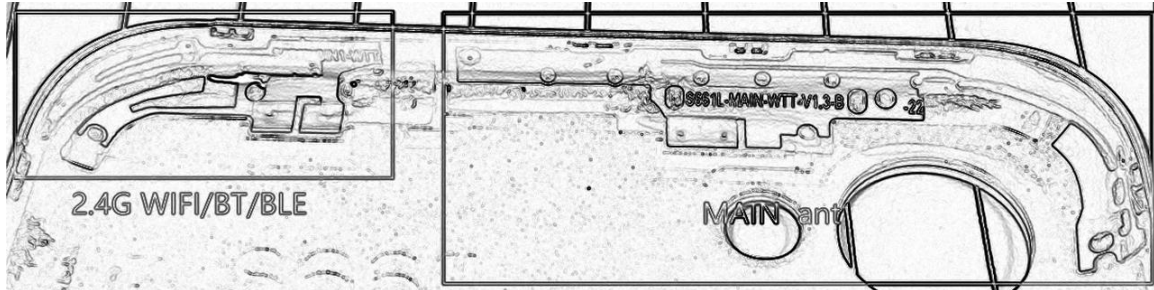
**Antenna:**

**DIV Antenna**



**2.4G Wi-Fi/BT/BLE Antenna**

**Main Antenna**



PREPARED BY	CHECKEDBY	APPROVAL BY	S.R.NO	
			DATE:	