	Annex A: System Check
	Tested Model : A667LP
	Report Number: WSCT-A2LA-R&E240200007A-SAR

I. RESULTS

<u>TYPE</u>	<u>BAND</u>	<u>PARAMETERS</u>
Validation	CW835	<u>Measurement 1: Validation Plane with Dipole device position on Middle Channel in CW mode</u>
Validation	CW835	<u>Measurement 2: Validation Plane with Dipole device position on Middle Channel in CW mode</u>
Validation	CW1800	<u>Measurement 3: Validation Plane with Dipole device position on Middle Channel in CW mode</u>
Validation	CW1800	<u>Measurement 4: Validation Plane with Dipole device position on Middle Channel in CW mode</u>
Validation	CW1900	<u>Measurement 5: Validation Plane with Dipole device position on Middle Channel in CW mode</u>
Validation	CW1900	<u>Measurement 6: Validation Plane with Dipole device position on Middle Channel in CW mode</u>
Validation	CW2450	<u>Measurement 7: Validation Plane with Dipole device position on Middle Channel in CW mode</u>
Validation	CW2450	<u>Measurement 8: Validation Plane with Dipole device position on Middle Channel in CW mode</u>
Validation	CW260	<u>Measurement 9: Validation Plane with Dipole device position on Middle Channel in CW mode</u>
Validation	CW2600	<u>Measurement 10: Validation Plane with Dipole device position on Middle Channel in CW mode</u>

MEASUREMENT 1

BODY

Type: Validation measurement (Complete)

Date of measurement: 1/3/2024

Measurement duration: 11 minutes 54 seconds

A. Experimental conditions.

<u>Area Scan</u>	<u>dx=8mm dy=8mm</u>
<u>ZoomScan</u>	<u>5x5x7,dx=8mm dy=8mm</u> <u>dz=5mm,Complete</u>
<u>Phantom</u>	<u>Validation plane</u>
<u>Device Position</u>	<u>Dipole</u>
<u>Band</u>	<u>CW835</u>
<u>Channels</u>	<u>Middle</u>
<u>Signal</u>	<u>CW (Crest factor: 1.0)</u>

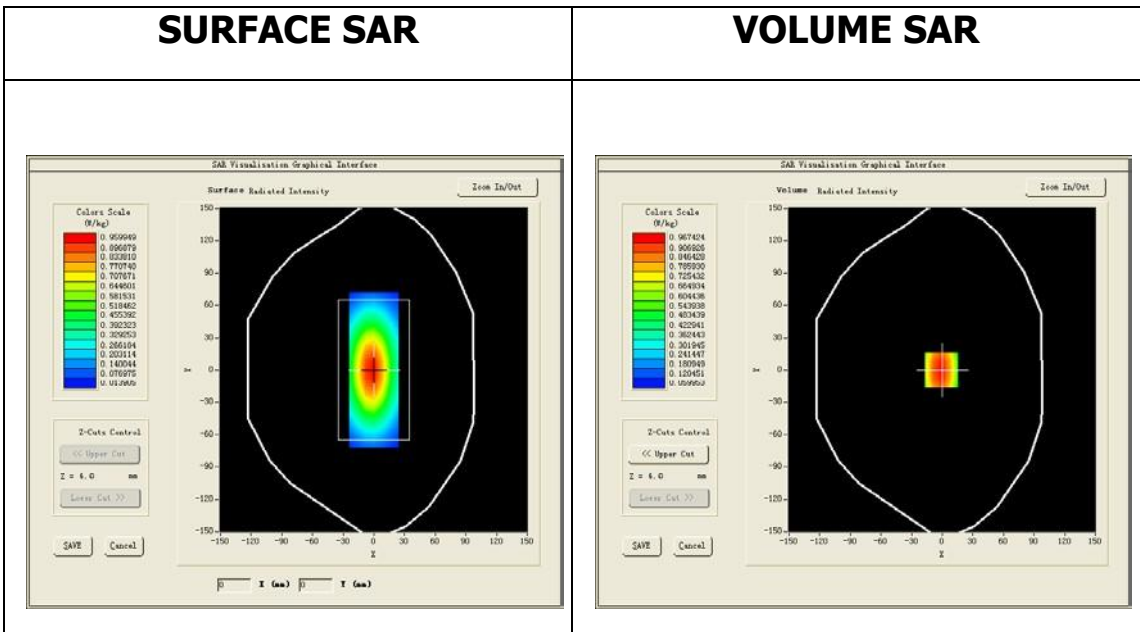
B. SAR Measurement Results

Middle Band SAR (Channel -1):

Frequency (MHz)	835.000000
Relative permittivity (real part)	53.927799
Relative permittivity (imaginary part)	21.281300
Conductivity (S/m)	0.987216
Variation (%)	0.120000

SURFACE SAR

VOLUME SAR

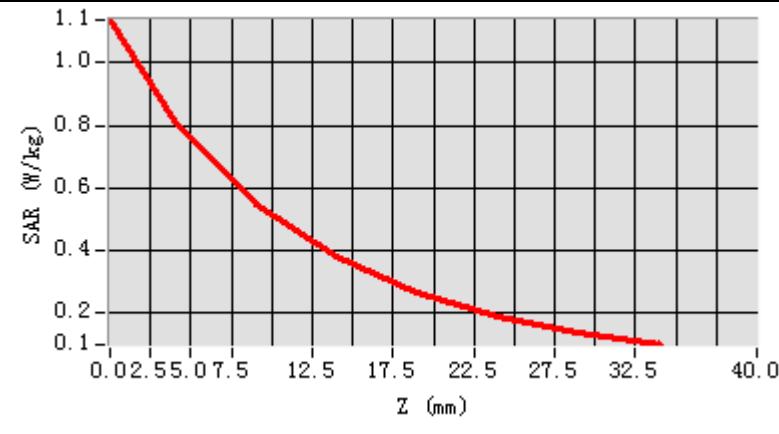


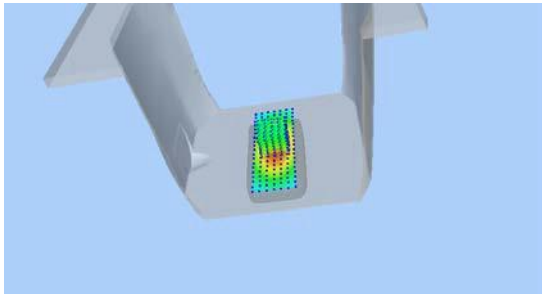
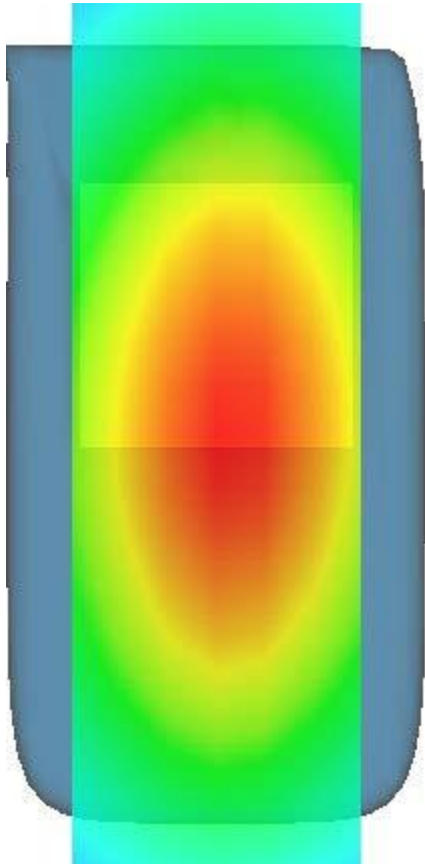
Maximum location: X=-1.00, Y=0.00

SAR Peak: 1.44 W/kg

SAR 10g (W/Kg)	0.644746
SAR 1g (W/Kg)	1.014583

Z (mm)	0.00	4.00	9.00	14.00	19.00	24.00	29.00
SAR (W/Kg)	1.1418	0.9674	0.6426	0.4358	0.2947	0.1989	0.1326



3D screen shot	Hot spot position
	

MEASUREMENT 2

HEAD

Type: Validation measurement (Complete)

Date of measurement: 1/3/2024

Measurement duration: 11 minutes 54 seconds

A. Experimental conditions.

<u>Area Scan</u>	<u>dx=8mm dy=8mm</u>
<u>ZoomScan</u>	<u>5x5x7,dx=8mm dy=8mm dz=5mm,Complete</u>
<u>Phantom</u>	<u>Validation plane</u>
<u>Device Position</u>	<u>Dipole</u>
<u>Band</u>	<u>CW835</u>
<u>Channels</u>	<u>Middle</u>
<u>Signal</u>	<u>CW (Crest factor: 1.0)</u>

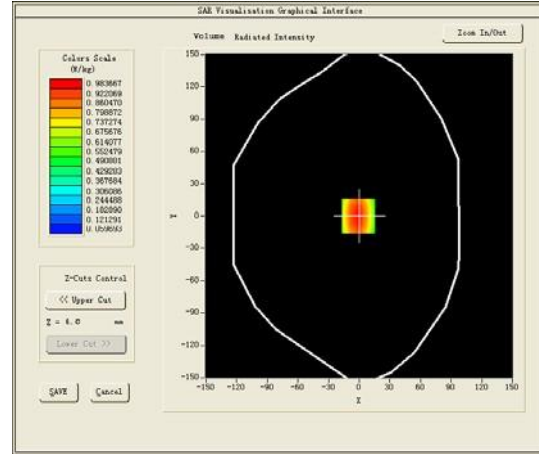
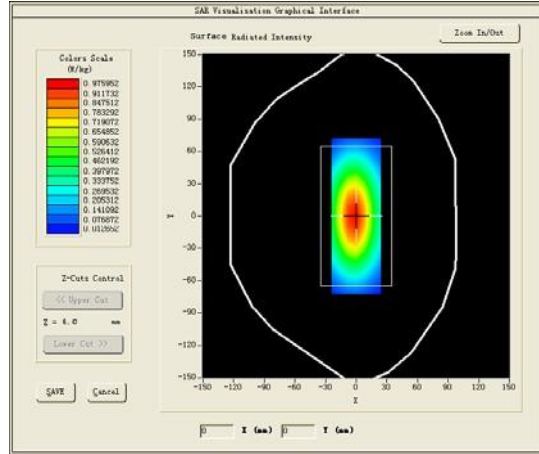
B. SAR Measurement Results

Middle Band SAR (Channel -1):

Frequency (MHz)	835.000000
Relative permittivity (real part)	40.502102
Relative permittivity (imaginary part)	19.566299
Conductivity (S/m)	0.907659
Variation (%)	0.380000

SURFACE SAR

VOLUME SAR

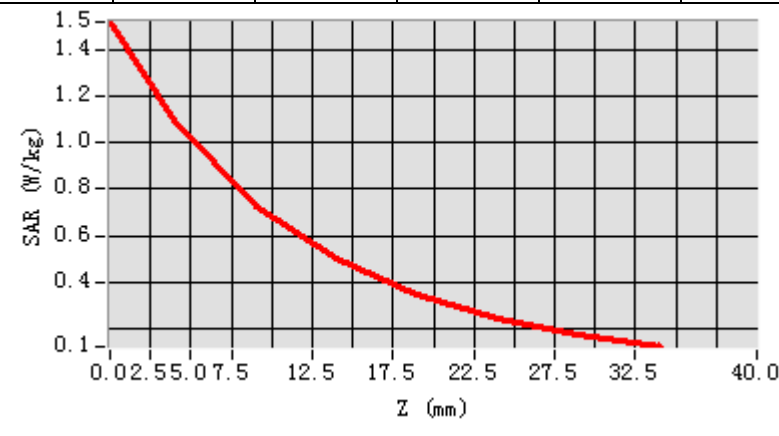


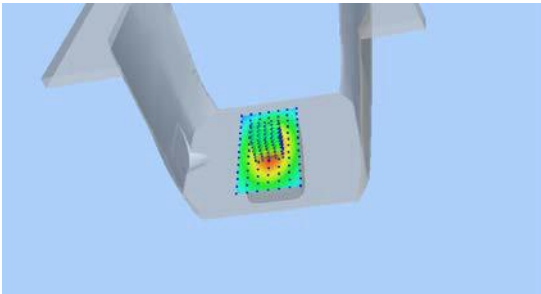
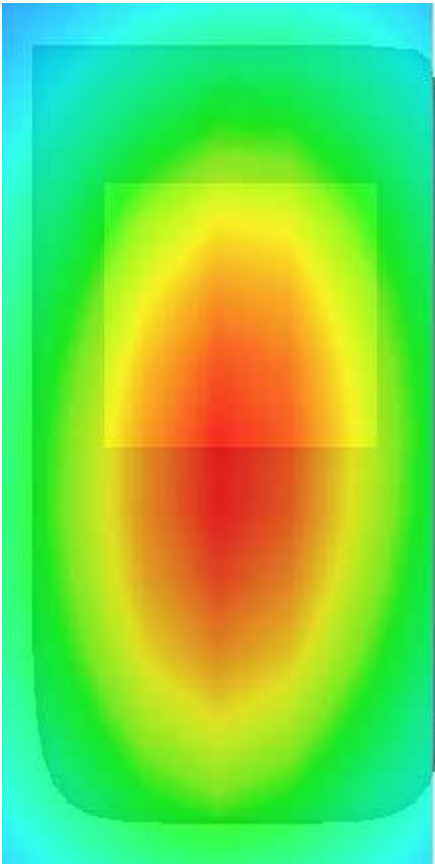
Maximum location: X=-3.00, Y=-5.00

SAR Peak: 1.37 W/kg

SAR 10g (W/Kg)	0.615004
SAR 1g (W/Kg)	0.970049

Z (mm)	0.00	4.00	9.00	14.00	19.00	24.00	29.00
SAR (W/Kg)	1.5179	1.0923	0.7286	0.5008	0.3478	0.2446	0.1730



3D screen shot	Hot spot position
	

MEASUREMENT 3

BODY

Type: Validation measurement (Complete)

Date of measurement: 4/3/2024

Measurement duration: 11 minutes 22 seconds

A. Experimental conditions.

<u>Area Scan</u>	<u>dx=8mm dy=8mm</u>
<u>ZoomScan</u>	<u>5x5x7,dx=8mm dy=8mm dz=5mm,Complete</u>
<u>Phantom</u>	<u>Validation plane</u>
<u>Device Position</u>	<u>Dipole</u>
<u>Band</u>	<u>CW1800</u>
<u>Channels</u>	<u>Middle</u>
<u>Signal</u>	<u>CW (Crest factor: 1.0)</u>

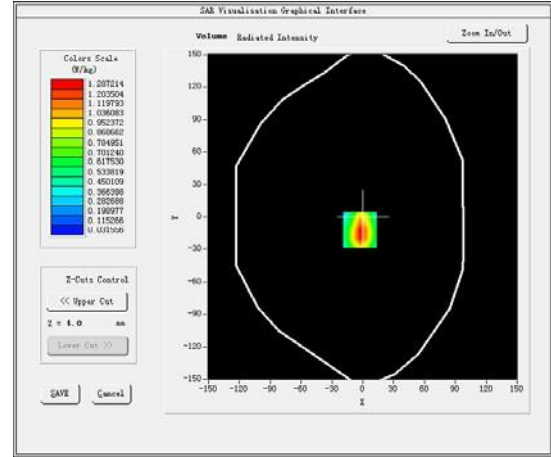
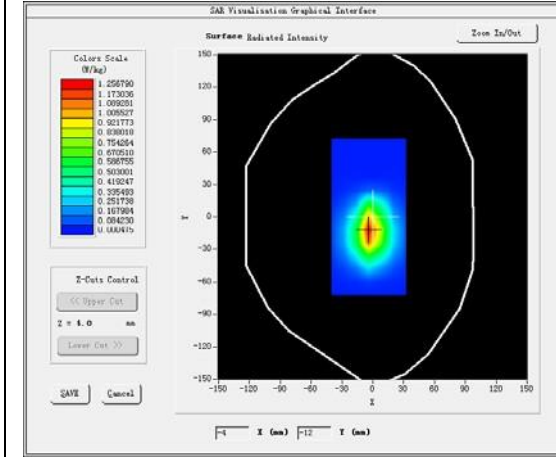
B. SAR Measurement Results

Middle Band SAR (Channel -1):

Frequency (MHz)	1800.000000
Relative permittivity (real part)	53.112099
Relative permittivity (imaginary part)	15.286700
Conductivity (S/m)	1.528670
Variation (%)	-0.410000

SURFACE SAR

VOLUME SAR

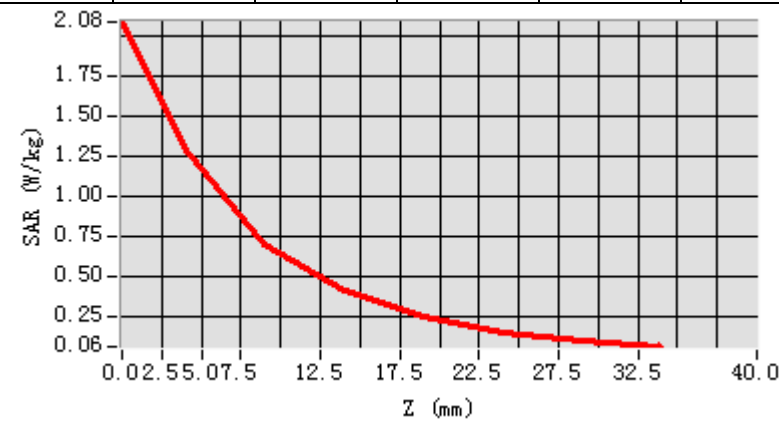


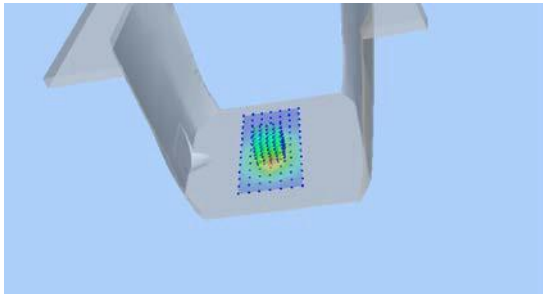
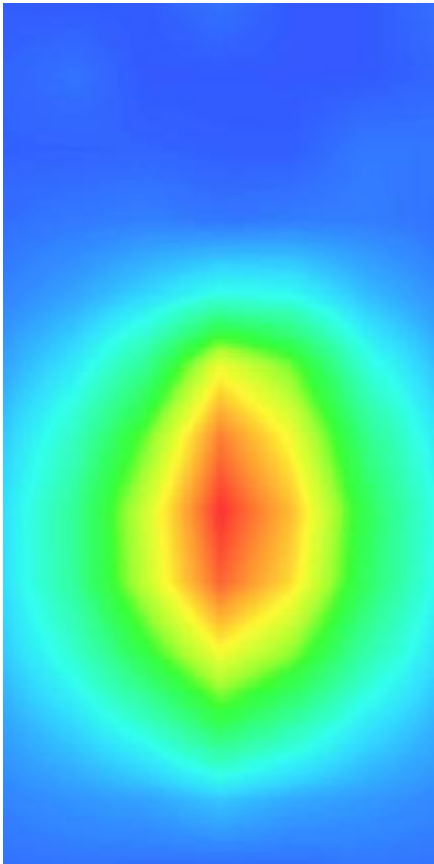
Maximum location: X=-0.00, Y=-0.00

SAR Peak: 7.72 W/kg

SAR 10g (W/Kg)	2.171888
SAR 1g (W/Kg)	4.156173

Z (mm)	0.00	4.00	9.00	14.00	19.00	24.00	29.00
SAR (W/Kg)	7.7941	4.9087	2.6873	1.5154	0.8724	0.5075	0.2958



3D screen shot	Hot spot position
	

MEASUREMENT 4

HEAD

Type: Validation measurement (Complete)

Date of measurement: 4Measurement

duration: 14 minutes 4 seconds

A. Experimental conditions.

<u>Area Scan</u>	<u>dx=8mm dy=8mm</u>
<u>ZoomScan</u>	<u>5x5x7, dx=8mm dy=8mm dz=5mm, Complete</u>
<u>Phantom</u>	<u>Validation plane</u>
<u>Device Position</u>	<u>Dipole</u>
<u>Band</u>	<u>CW1800</u>
<u>Channels</u>	<u>Middle</u>
<u>Signal</u>	<u>CW (Crest factor: 1.0)</u>

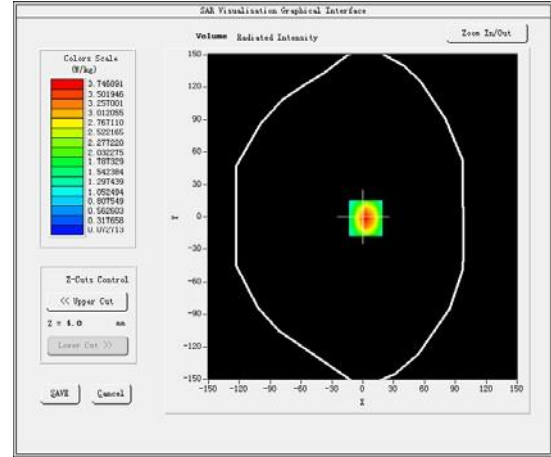
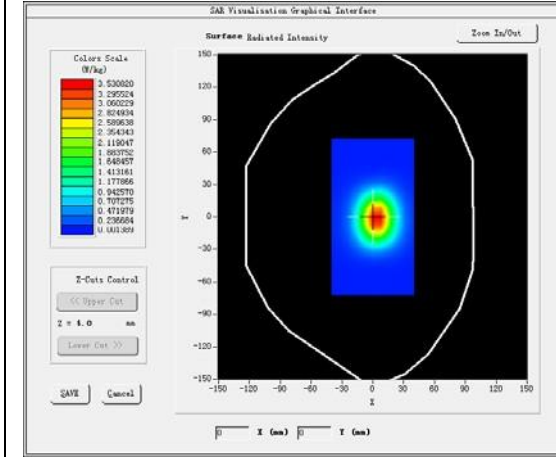
B. SAR Measurement Results

Middle Band SAR (Channel -1):

Frequency (MHz)	1800.000000
Relative permittivity (real part)	39.812099
Relative permittivity (imaginary part)	14.387682
Conductivity (S/m)	1.441670
Variation (%)	-1.090000

SURFACE SAR

VOLUME SAR

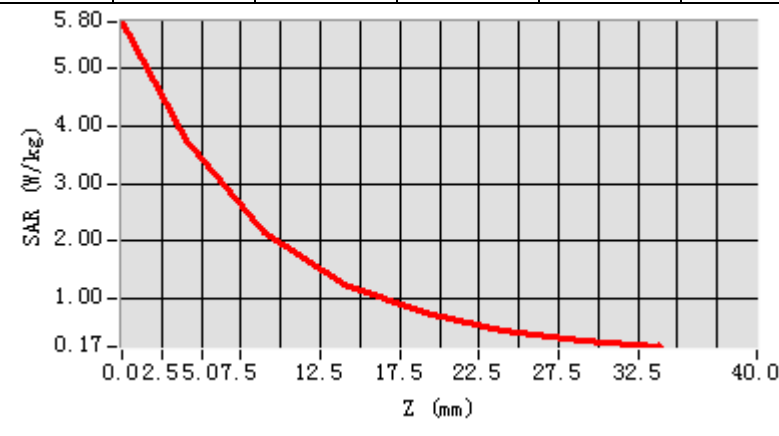


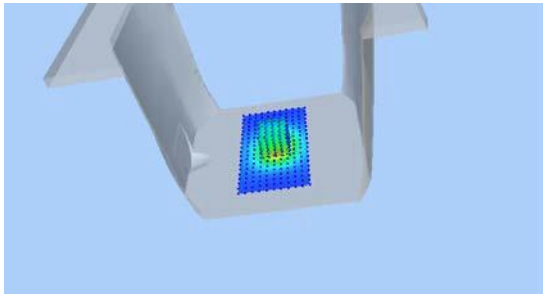
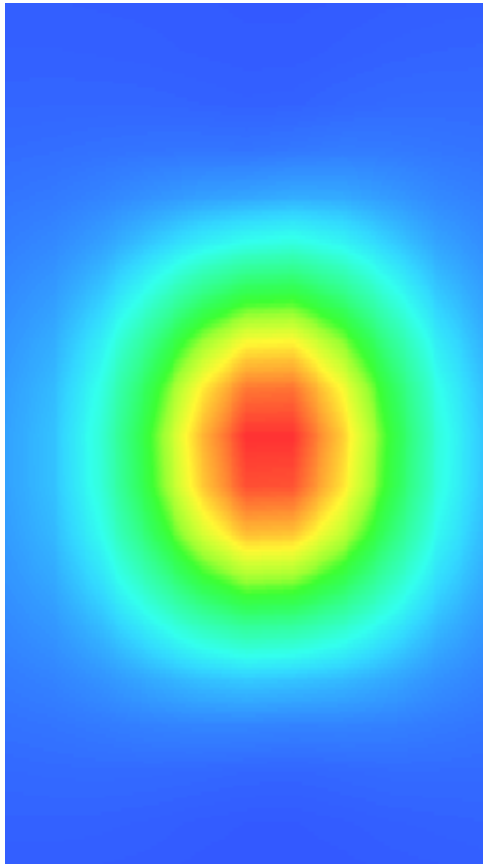
Maximum location: X=7.00, Y=0.00

SAR Peak: 5.77 W/kg

SAR 10g (W/Kg)	2.060294
SAR 1g (W/Kg)	3.998394

Z (mm)	0.00	4.00	9.00	14.00	19.00	24.00	29.00
SAR (W/Kg)	7.6530	4.8292	2.6475	1.4988	0.8584	0.4963	0.2899



3D screen shot	Hot spot position
	

MEASUREMENT 5

BODY

Type: Validation measurement (Complete)

Date of measurement: 4/3/2024

Measurement duration: 14 minutes 21 seconds

A. Experimental conditions.

<u>Area Scan</u>	<u>dx=8mm dy=8mm</u>
<u>ZoomScan</u>	<u>5x5x7,dx=8mm dy=8mm dz=5mm,Complete</u>
<u>Phantom</u>	<u>Validation plane</u>
<u>Device Position</u>	<u>Dipole</u>
<u>Band</u>	<u>CW1900</u>
<u>Channels</u>	<u>Middle</u>
<u>Signal</u>	<u>CW (Crest factor: 1.0)</u>

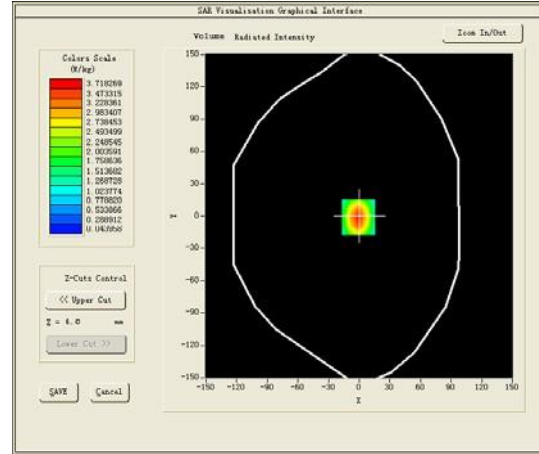
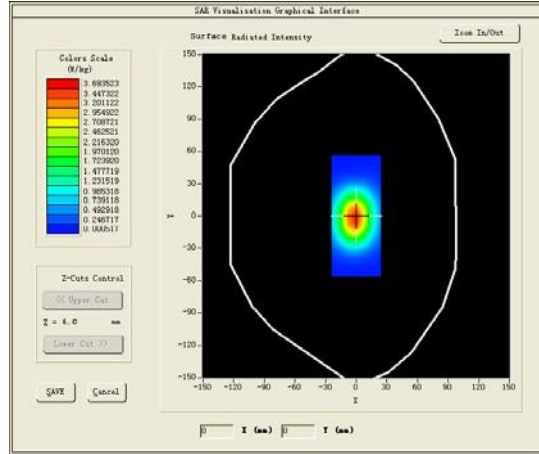
B. SAR Measurement Results

Middle Band SAR (Channel -1):

Frequency (MHz)	1900.000000
Relative permittivity (real part)	53.365299
Relative permittivity (imaginary part)	14.757600
Conductivity (S/m)	1.557747
Variation (%)	-0.450000

SURFACE SAR

VOLUME SAR

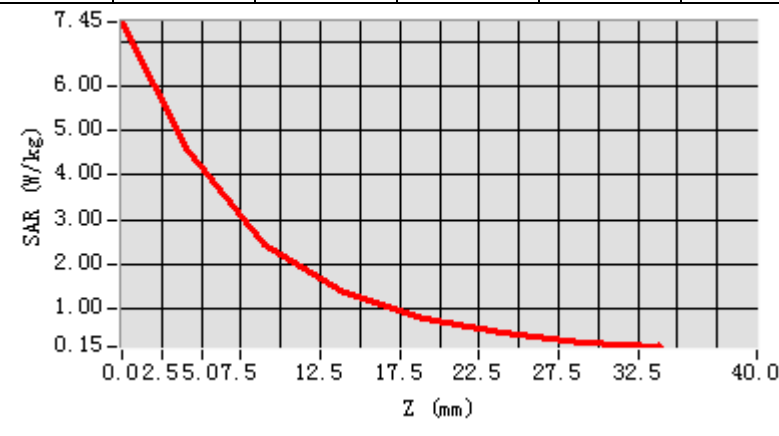


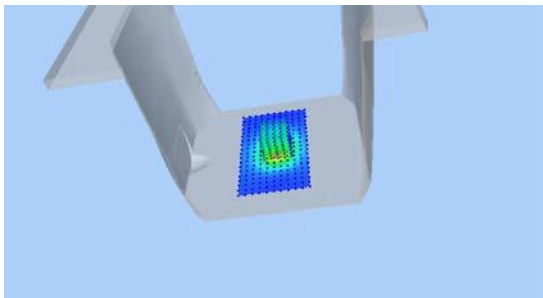
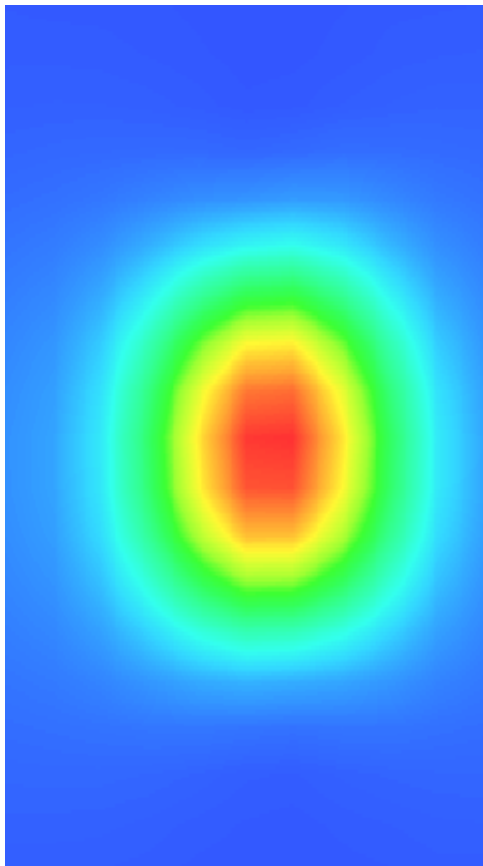
Maximum location: X=1.00, Y=-1.00

SAR Peak: 7.40 W/kg

SAR 10g (W/Kg)	2.093533
SAR 1g (W/Kg)	3.932904

Z (mm)	0.00	4.00	9.00	14.00	19.00	24.00	29.00
SAR (W/Kg)	5.7034	3.7183	2.1347	1.2560	0.7338	0.4260	0.2429



3D screen shot	Hot spot position
	

MEASUREMENT 6

HEAD

Type: Validation measurement (Complete)

Date of measurement: 7/3/2024

Measurement duration: 13 minutes 47 seconds

A. Experimental conditions.

<u>Area Scan</u>	<u>dx=8mm dy=8mm</u>
<u>ZoomScan</u>	<u>5x5x7,dx=8mm dy=8mm dz=5mm,Complete</u>
<u>Phantom</u>	<u>Validation plane</u>
<u>Device Position</u>	<u>Dipole</u>
<u>Band</u>	<u>CW1900</u>
<u>Channels</u>	<u>Middle</u>
<u>Signal</u>	<u>CW (Crest factor: 1.0)</u>

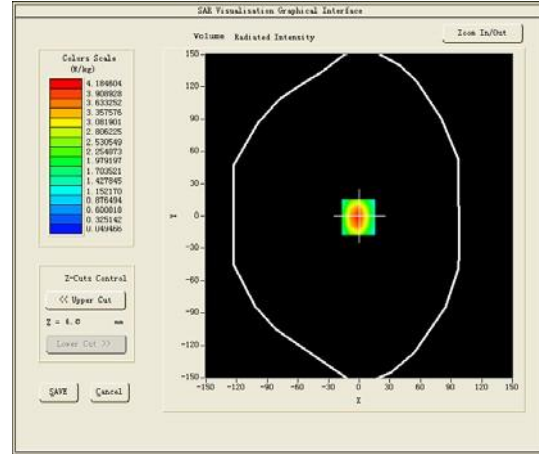
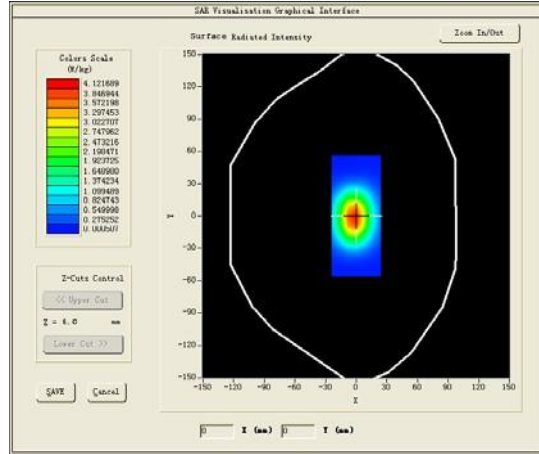
B. SAR Measurement Results

Middle Band SAR (Channel -1):

Frequency (MHz)	1900.000000
Relative permittivity (real part)	39.976398
Relative permittivity (imaginary part)	13.386300
Conductivity (S/m)	1.412998
Variation (%)	-0.040000

SURFACE SAR

VOLUME SAR

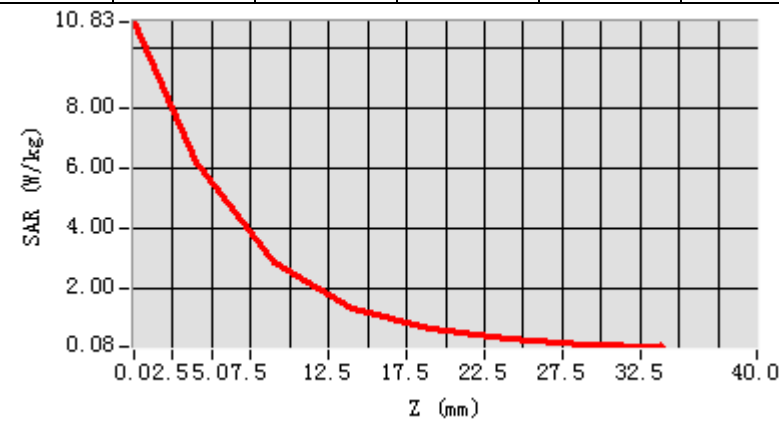


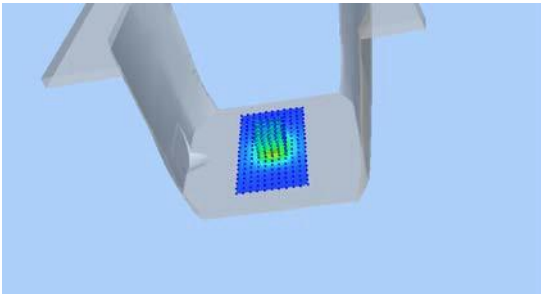
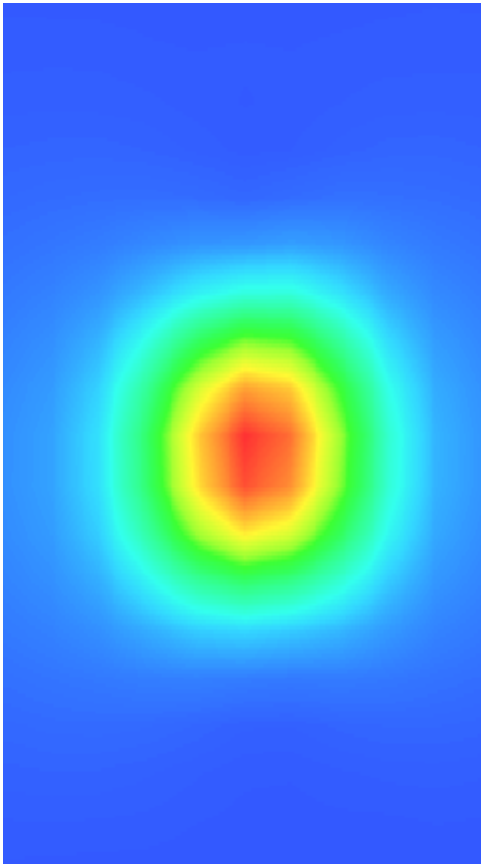
Maximum location: X=1.00, Y=-1.00

SAR Peak: 10.79 W/kg

SAR 10g (W/Kg)	2.107104
SAR 1g (W/Kg)	3.997625

Z (mm)	0.00	4.00	9.00	14.00	19.00	24.00	29.00
SAR (W/Kg)	6.4693	4.1846	2.3780	1.3892	0.8084	0.4680	0.2662



3D screen shot	Hot spot position
	

MEASUREMENT 7

BODY

Type: Validation measurement (Complete)

Date of measurement: 7/3/2024

Measurement duration: 13 minutes 46 seconds

A. Experimental conditions.

<u>Area Scan</u>	<u>dx=8mm dy=8mm</u>
<u>ZoomScan</u>	<u>5x5x7, dx=8mm dy=8mm dz=5mm, Complete</u>
<u>Phantom</u>	<u>Validation plane</u>
<u>Device Position</u>	<u>Dipole</u>
<u>Band</u>	<u>CW2450</u>
<u>Channels</u>	<u>Middle</u>
<u>Signal</u>	<u>CW (Crest factor: 1.0)</u>

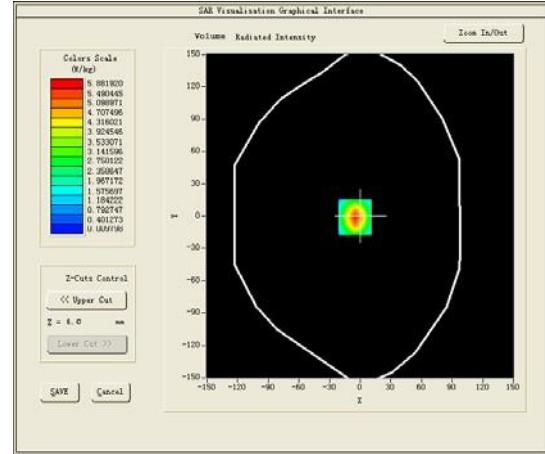
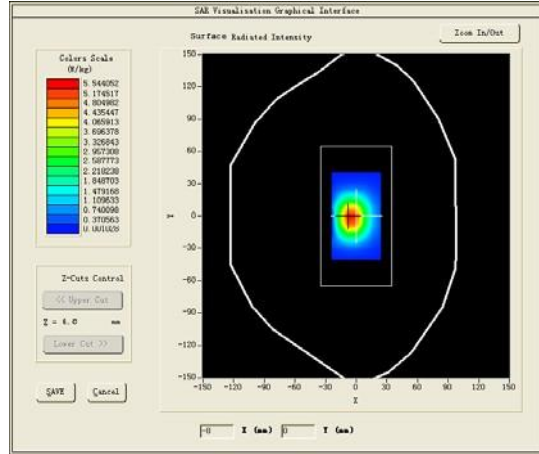
B. SAR Measurement Results

Middle Band SAR (Channel -1):

Frequency (MHz)	2450.000000
Relative permittivity (real part)	52.735699
Relative permittivity (imaginary part)	14.017300
Conductivity (S/m)	1.907910
Variation (%)	0.390000

SURFACE SAR

VOLUME SAR

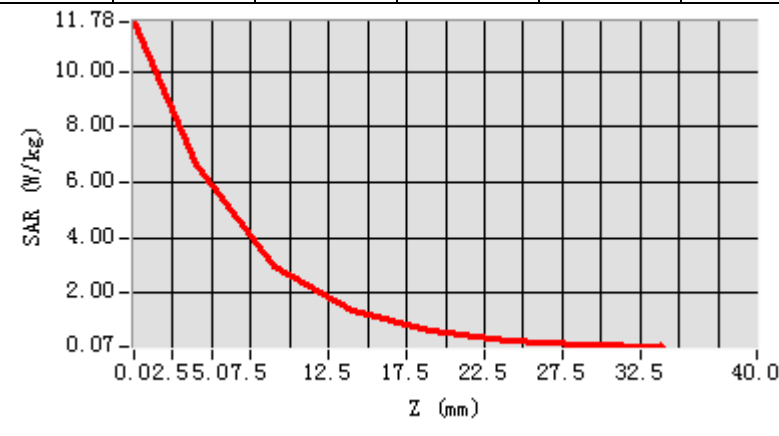


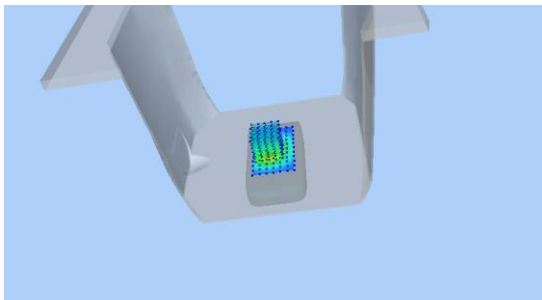
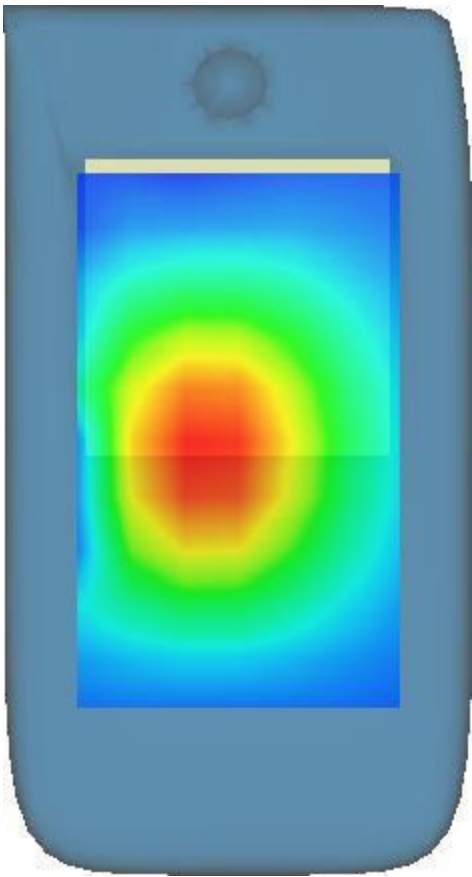
Maximum location: X=5.00, Y=-1.00

SAR Peak: 10.96 W/kg

SAR 10g (W/Kg)	2.333453
SAR 1g (W/Kg)	5.433343

Z (mm)	0.00	4.00	9.00	14.00	19.00	24.00	29.00
SAR (W/Kg)	10.2188	5.8819	2.7478	1.3151	0.6266	0.2969	0.1341



3D screen shot	Hot spot position
	

MEASUREMENT 8

HEAD

Type: Validation measurement (Complete)

Date of measurement: 11/3/2024

Measurement duration: 28 minutes 56 seconds

A. Experimental conditions.

<u>Area Scan</u>	<u>dx=8mm dy=8mm</u>
<u>ZoomScan</u>	<u>8x8x7,dx=4mm dy=4mm dz=2mm,Complete</u>
<u>Phantom</u>	<u>Validation plane</u>
<u>Device Position</u>	<u>Dipole</u>
<u>Band</u>	<u>CW2450</u>
<u>Channels</u>	<u>Middle</u>
<u>Signal</u>	<u>CW (Duty cycle:1.0)</u>

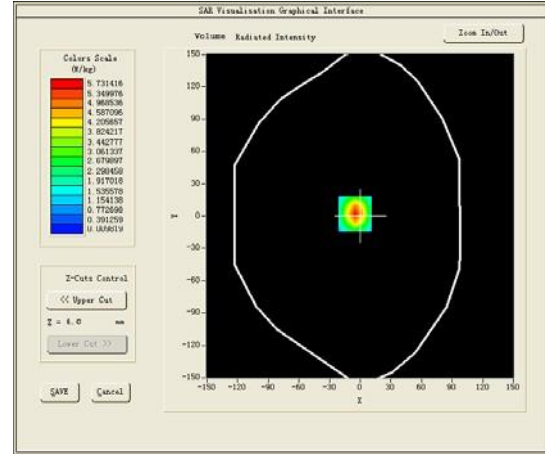
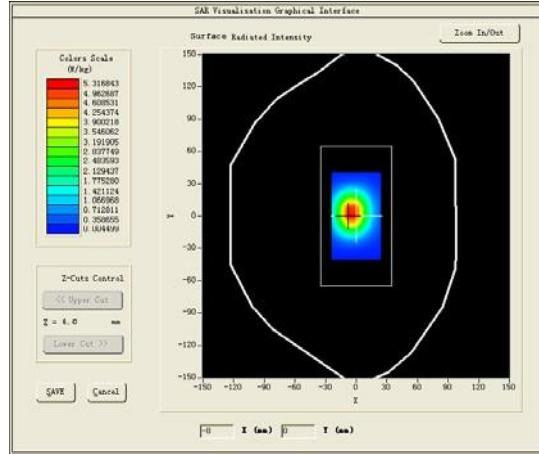
B. SAR Measurement Results

Middle Band SAR (Channel -1):

Frequency (MHz)	2450.000000
Relative permittivity (real part)	39.235699
Relative permittivity (imaginary part)	12.917300
Conductivity (S/m)	1.758188
Variation (%)	2.820000

SURFACE SAR

VOLUME SAR

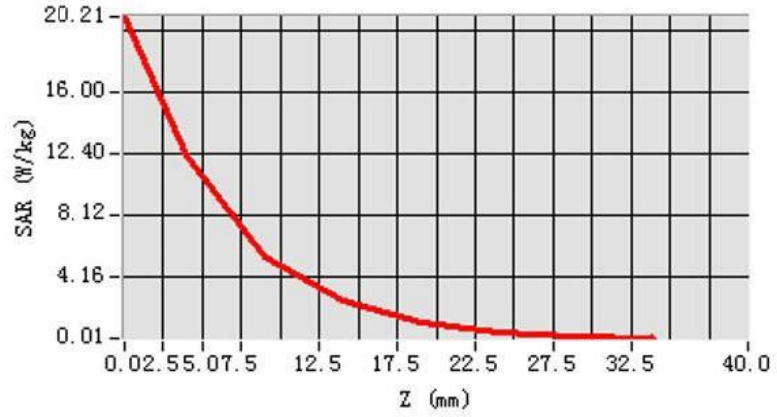


Maximum location: X=-5.00, Y=2.00

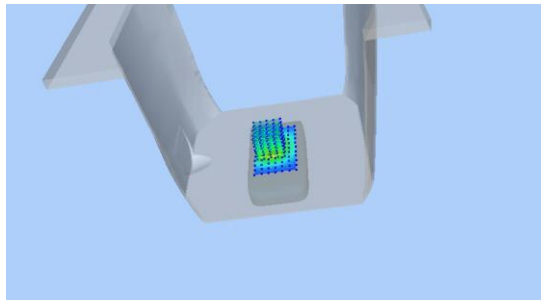
SAR Peak: 9.92W/kg

SAR 10g (W/Kg)	2.452895
SAR 1g (W/Kg)	5.393069

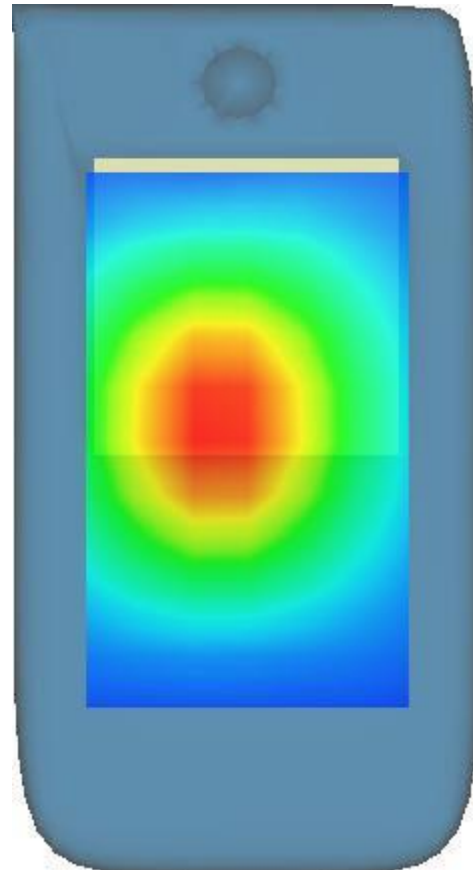
Z (mm)	0.00	4.00	9.00	14.00	19.00	24.00	29.00
SAR (W/Kg)	9.9915	5.7314	2.6626	1.2722	0.6047	0.2852	0.1274



3D screen shot



Hot spot position



MEASUREMENT 9

BODY

Type: Validation measurement (Complete)

Date of measurement: 11/3/2024

Measurement duration: 29 minutes 30 seconds

A. Experimental conditions.

<u>Area Scan</u>	<u>dx=8mm dy=8mm</u>
<u>ZoomScan</u>	<u>8x8x7,dx=4mm dy=4mm dz=2mm,Complete</u>
<u>Phantom</u>	<u>Validation plane</u>
<u>Device Position</u>	<u>Dipole</u>
<u>Band</u>	<u>CW2600</u>
<u>Channels</u>	<u>Middle</u>
<u>Signal</u>	<u>CW (Duty cycle:1.0)</u>

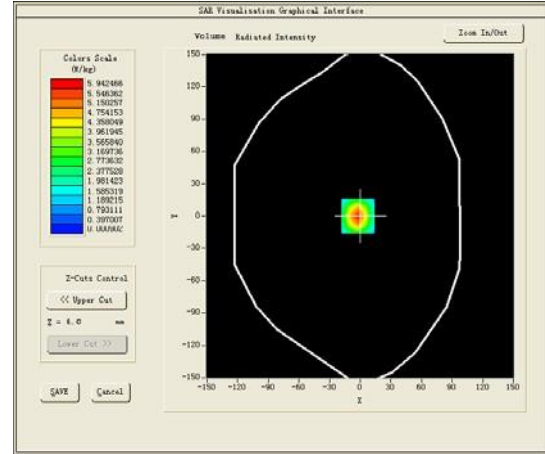
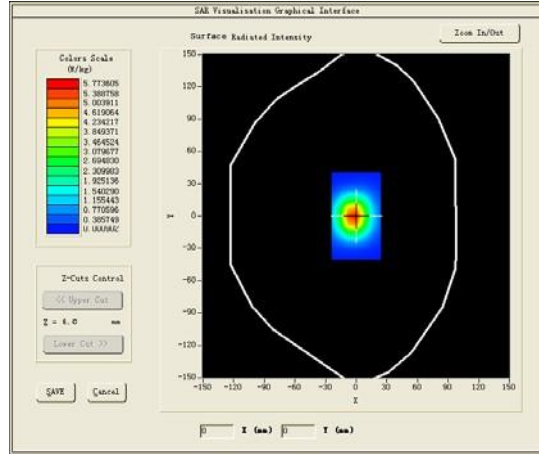
B. SAR Measurement Results

Middle Band SAR (Channel -1):

Frequency (MHz)	2600.000000
Relative permittivity (real part)	52.007900
Relative permittivity (imaginary part)	14.458500
Conductivity (S/m)	2.088450
Variation (%)	-0.220000

SURFACE SAR

VOLUME SAR

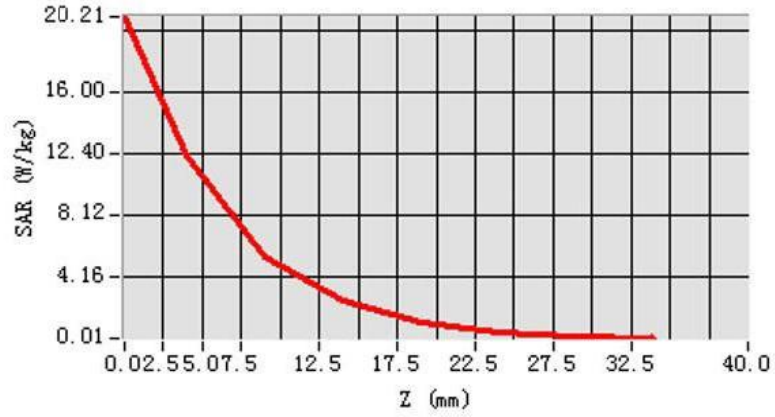


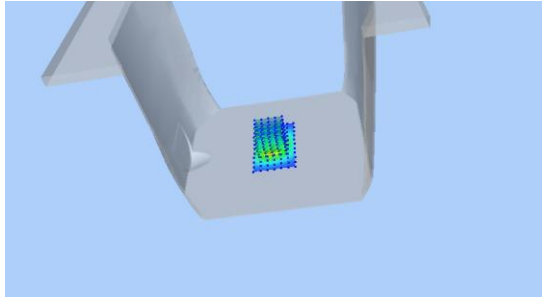
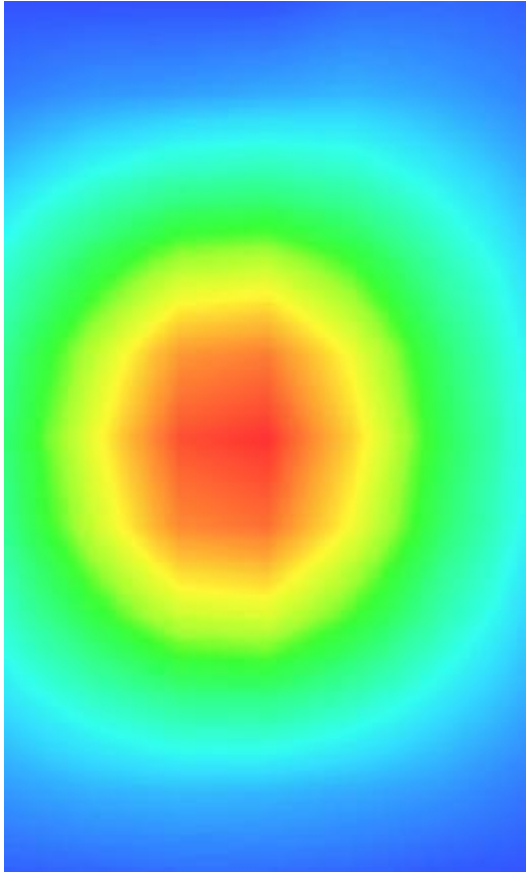
Maximum location: X=-2.00,Y=0.00

SAR Peak: 10.74 W/kg

SAR 10g (W/Kg)	2.559674
SAR 1g (W/Kg)	5.786435

Z (mm)	0.00	4.00	9.00	14.00	19.00	24.00	29.00
SAR (W/Kg)	10.4745	5.9425	2.6827	1.2126	0.5266	0.2069	0.0714



3D screen shot	Hot spot position
	

MEASUREMENT 10

HEAD

Type: Validation measurement (Complete)

Date of measurement: 14/3/2024

Measurement duration: 27 minutes 33 seconds

A. Experimental conditions.

<u>Area Scan</u>	<u>dx=8mm dy=8mm</u>
<u>ZoomScan</u>	<u>8x8x7,dx=4mm dy=4mm dz=2mm,Complete</u>
<u>Phantom</u>	<u>Validation plane</u>
<u>Device Position</u>	<u>Dipole</u>
<u>Band</u>	<u>CW2600</u>
<u>Channels</u>	<u>Middle</u>
<u>Signal</u>	<u>CW (Duty cycle:1.00)</u>

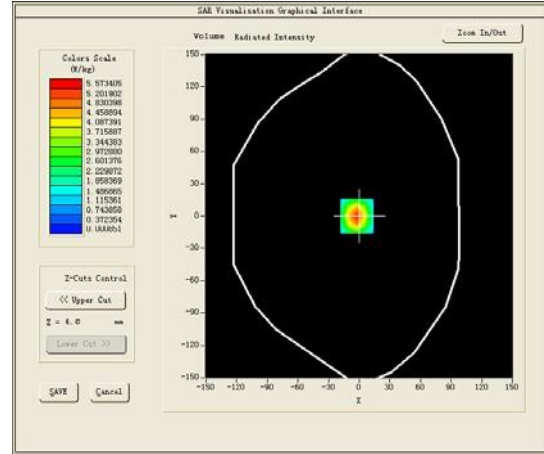
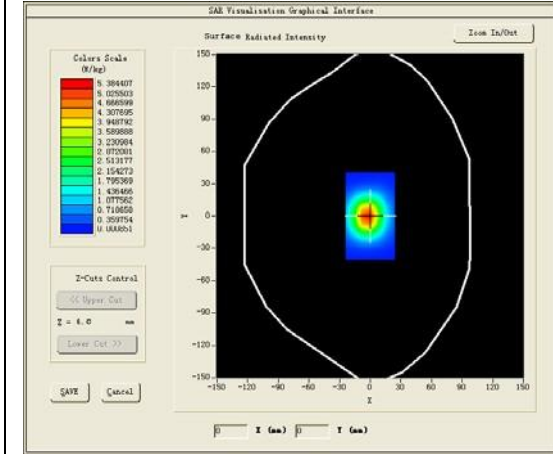
B. SAR Measurement Results

Middle Band SAR (Channel -1):

Frequency (MHz)	2600.000000
Relative permittivity (real part)	38.979599
Relative permittivity (imaginary part)	13.989700
Conductivity (S/m)	2.020734
Variation (%)	0.250000

SURFACE SAR

VOLUME SAR

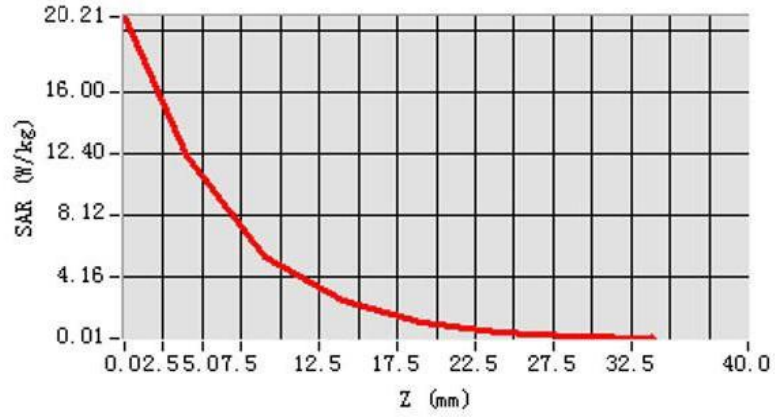


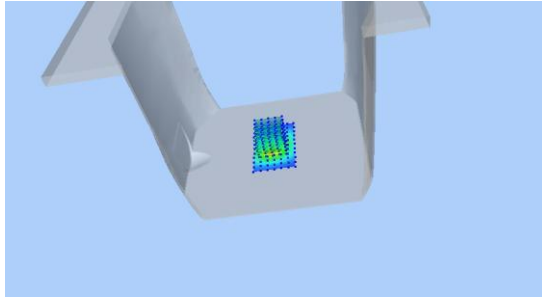
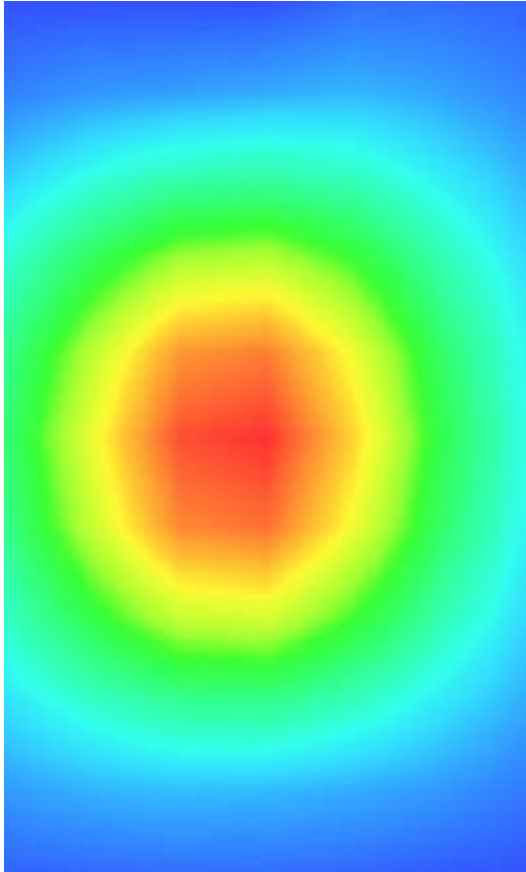
Maximum location: X=-2.00, Y=0.00

SAR Peak: 9.73 W/kg

SAR 10g (W/Kg)	2.342963
SAR 1g (W/Kg)	5.318259

Z (mm)	0.00	4.00	9.00	14.00	19.00	24.00	29.00
SAR (W/Kg)	9.8044	5.5734	2.5229	1.1430	0.4950	0.1964	0.0689



3D screen shot	Hot spot position
	

MEASUREMENT 11

BODY

Type: Validation measurement (Complete)

Date of measurement: 14/3/2024

Measurement duration: 28 minutes 52 seconds

A. Experimental conditions.

<u>Area Scan</u>	<u>dx=10mm dy=10mm</u>
<u>ZoomScan</u>	<u>8x8x7,dx=4mm dy=4mm dz=2mm,Complete</u>
<u>Phantom</u>	<u>Validation plane</u>
<u>Device Position</u>	<u>Waveguide</u>
<u>Band</u>	<u>CW5200</u>
<u>Channels</u>	<u>Middle</u>
<u>Signal</u>	<u>CW (Duty cycle:1:1)</u>

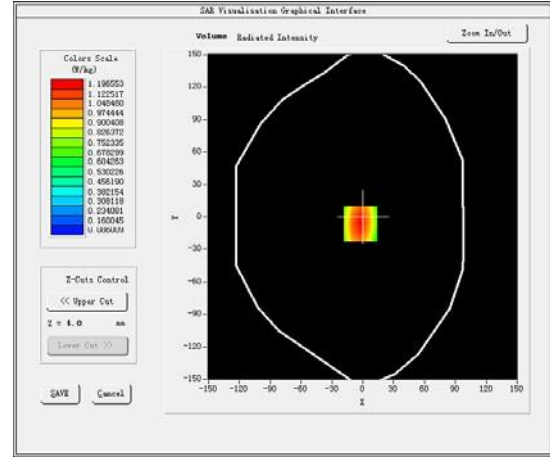
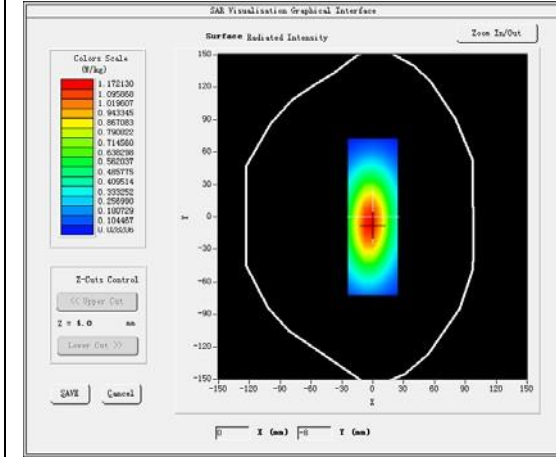
B. SAR Measurement Results

Middle Band SAR (Channel -1):

Frequency (MHz)	5200.000000
Relative permittivity (real part)	50.422599
Relative permittivity (imaginary part)	18.202492
Conductivity (S/m)	5.26371
Variation (%)	0.270000

SURFACE SAR

VOLUME SAR

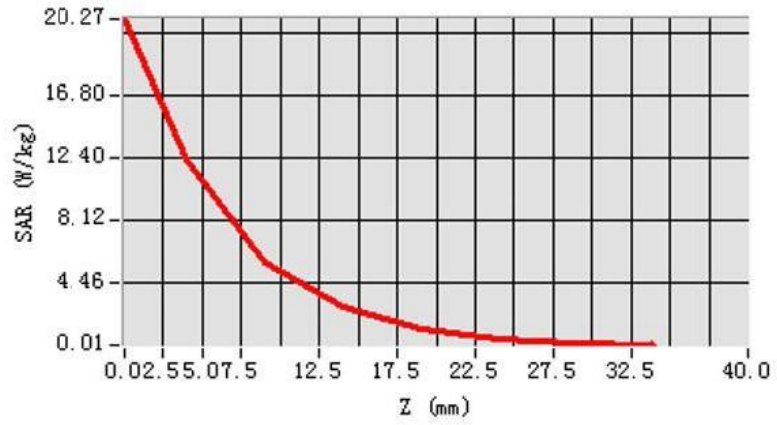


Maximum location: X=-2.00, Y=-6.00

SAR Peak: 20.27 W/kg

SAR 10g (W/Kg)	5.964061
SAR 1g (W/Kg)	16.7183141

Z (mm)	0.00	4.00	9.00	14.00	19.00	24.00	29.00
SAR (W/Kg)	20.2711	16.1966	12.7784	10.5196	8.1218	4.2403	1.1660



3D screen shot	Hot spot position
