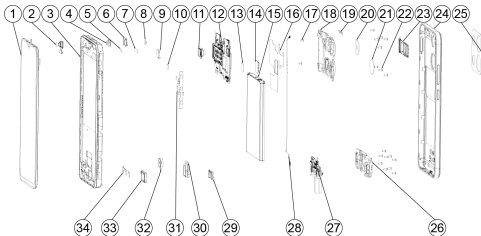


A05s

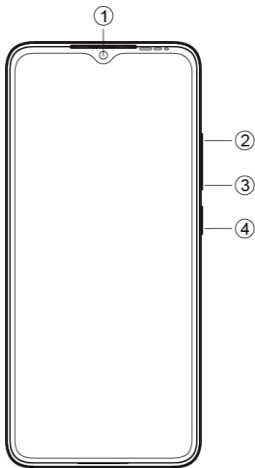
User Manual

Explosion diagram specification



1	LDA	2	FRONT CAM 5M
3	FRONT HSG ASSY	4	FRONT CAM RUBBER
5	SIM ELEC ADHE	6	RECEIVER
7	CAM SHEDING FOIL	8	CONDUCT SPONGE FRO CAM
9	REAR CAM1 COPPER FOIL	10	FINGER MYLAR
11	REAR CAM 5M	12	MAIN PCBA ASSY
13	CONDUCT FOAM FINGERPRINT	14	FINGERPRINT
15	BATTERY	16	RF COPPER FOIL
17	SCREW ASSY	18	UPPER REAR HSG
19	UP REA WATERPROOF MYLAR	20	LENS MAIN
21	LENS SUB	22	SCREW_ M1_ 4X3_ 5L
23	SIM	24	BATTERY COVER ASSY
25	CAM DECO	26	LOWER REAR HSG
27	SUB PCBA ASSY	28	RF COAXIAL CABLE ASSY
29	RUBB TYPE C	30	RUBBER AUDIO JACK
31	SIDEKEY FPC ASSY	32	MOTOR
33	SPEAKER	34	SPK FPC

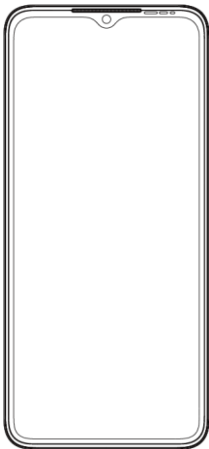
Know your phone



1. Front camera
2. Volume + key
3. Volume - key
4. Power key

SIM/SD card installation

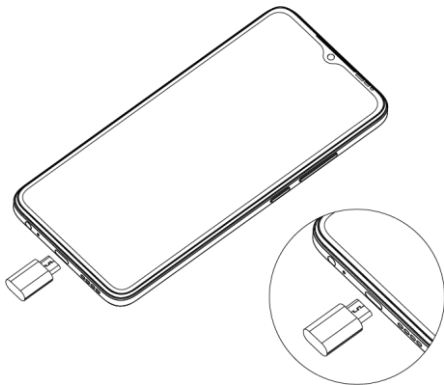
1. Power off mobile.
2. Refer to the following picture for SIM / SD card installation.



Charging the phone

You can charge your device using a charger or by connecting it to the computer using a USB cable (comes with the phone).

Use only itel charger and cables. Other chargers or cables may damage the device. This will invalidate your phone warranty.



FCC Caution

Labelling requirements.

This device complies with Part 15 of the FCC Rules. Operation is subject to the following two conditions:

- (1) This device may not cause harmful interference.
- (2) This device must accept any interference received, including interference that may cause undesired operation.

Information to user.

Any changes or modifications not expressly approved by the party responsible for compliance could void the user's authority to operate the equipment.

Information to the user.

Note: This equipment has been tested and found to comply with the limits for a Class B digital device, pursuant to part 15 of the FCC Rules. These limits are designed to provide reasonable protection against harmful interference in a residential installation. This equipment generates uses and can radiate radio frequency energy and, if not installed and used in accordance with the instructions, may cause harmful interference to radio communications. However, there is no guarantee that interference will not occur in a particular installation. If this equipment does cause harmful interference to radio or television reception, which can be determined by turning the equipment off and on, the user is encouraged to try to correct the interference by one or more of the following measures:

- Reorient or relocate the receiving antenna.
- Increase the separation between the equipment and receiver.
- Connect the equipment into an outlet on a circuit different from that to which the receiver is connected.
- Consult the dealer or an experienced radio/TV technician for help.

Specific Absorption Rate (SAR) information:

This mobile phone meets the government's requirements for

exposure to radio waves. The guidelines are based on standards that were developed by independent scientific organizations through periodic and thorough evaluation of scientific studies. The standards include a substantial safety margin designed to assure the safety of all persons regardless of age or health.

FCC RF Exposure Information and Statement The SAR limit of USA (FCC) is 1.6 W/kg averaged over one gram of tissue. Device types: A663L (FCC ID: 2AJMN-A663L) has also been tested against this SAR limit. The highest SAR value reported under this standard during product certification for use at the ear is 0.94 W/kg and when properly worn on the body is 0.78 W/kg.

Body-worn Operation

This device was tested for typical body-worn operations. To comply with RF exposure requirements, a minimum separation distance of 1.0 cm must be maintained between the user's body and the handset, including the antenna. Third-party belt-clips, holsters, and similar accessories used by this device should not contain any metallic components. Body-worn accessories that do not meet these requirements may not comply with RF exposure requirements and should be avoided. Use only the supplied or an approved antenna.

Operating System: Android™

Android is a trademark of Google LLC.

The logo for 'itel' is rendered in a vibrant red color. The word 'itel' is written in a lowercase, italicized, sans-serif typeface. It is enclosed within a dynamic, swooping red graphic that forms a partial oval above the text and a sharp, downward-pointing arrow-like shape below it, suggesting speed and energy.

itel