

FCC TEST REPORT

Under:

FCC Part 15, Class B

Equipment Class: CYY-Communications Receiver used w/Pt 15 Transmitter

Prepared For :

**Dongguan Laser Besson Photoelectricity Technology Co.,
Ltd.**

4 Floor, Jufeng building, No. 1 Jinxing Road, Jin Mei Village, Changping town, Dongguan, China

FCC ID: 2AJKN-LBS-019

EUT: Outdoor Lawn Light

Model: LBS-019

June 28, 2017

Issue Date:

Original Report

Report Type:

Jacky Huang

Test Engineer: Jacky Huang

Apollo Liu

Review By: Apollo Liu / Manager

The test report consists 24 pages in total. It may be duplicated completely for legal use with the allowance of the applicant. It shall not be reproduced except in full, without the written approval of Ke Mei Ou Laboratory Corporation. The test result in the report only applied to the tested sample.

TABLE OF CONTENTS

1. General Information	3
1. 1 Notes.....	3
1. 2 Testing Laboratory.....	3
1. 3 Details of Applicant.....	3
1. 4 Application Details	3
1. 5 Test Item	3
1. 6 Test Standards.....	3
2. Technical Test.....	4
2. 1 Summary of Test Results	4
2. 2 Measurement Uncertainty.....	4
3. Modifications	4
4. Conducted Power Line Test.....	5
4. 1 Test Equipment	5
4. 2 Test Procedure	5
4. 3 Test Setup	5
4. 4 Configuration of The EUT.....	6
4. 5 EUT Operating Condition.....	7
4. 6 Conducted Power Line Emission Limits	7
4. 7 Conducted Power Line Test Result.....	8
5. Radiated Emission Test.....	10
5. 1 Test Equipment	10
5. 2 Test Procedure	10
5. 3 Radiated Test Setup	10
5. 4 Configuration of The EUT.....	11
5. 5 EUT Operating Condition.....	11
5. 6 Radiated Emission Limit	11
5. 7 Radiated Emission Test Result.....	12
6. Photo of Testing.....	15
6.1 Emission test view.....	15
6.2 Photograph - EUT.....	17
7. FCC ID Label.....	23
8. Test Equipment.....	24

1. General Information

1.1 Notes

The test results of this report relate exclusively to the test item specified in 1.5. The KMO Lab does not assume responsibility for any conclusions and generalizations drawn from the test results with regard to other specimens or samples of the type of the equipment represented by the test item. The test report may only be reproduced or published in full. Reproduction or publication of extracts from the report requires the prior written approval of the KMO Lab.

1.2 Testing Laboratory

Ke Mei Ou Laboratory Co., Ltd.

ANSI-ASQ National Accreditation Board/ACLASS ISO/IEC 17025 Accredited Lab for telecommunication standards. The Registration Number is AT-1532. The testing quality system meets with ISO/IEC-17025 requirements, This approval results is accepted by MRA of ILAC.

FCC Test Site Registration Number: 962205

Internet: www.kmolab.com

1.3 Details of Applicant

Name : Dongguan Laser Besson Photoelectricity Technology Co.,ltd.

Address : 4 Floor, Jufeng building, No. 1 Jinxing Road, Jin Mei Village, Changping town, Dongguang, China

1.4 Application Details

Date of Receipt of Application : June 15, 2017

Date of Receipt of Test Item : June 15, 2017

Date of Test : June 15~June 28, 2017

1.5 Test Item

Manufacturer : Same as applicant

Address : Same as applicant

Trade Name : N/A

Model No.(Base) : LBS-019

Model No.(Extension) : N/A

Description : Outdoor Lawn Light

Additional Information

Product Type : N/A

Radio Type : N/A

Power Type : IP:100-240Vac 50/60 Hz
OP:DC 5V, 1000mA (Model: RKPO-UL051000)

Modulation : N/A

Data Modulation : N/A

Data Rate (Mbps) : N/A

Frequency Range : N/A

Channel Number : N/A

Antenna : N/A

1.6 Test Standards

FCC Part 15, Class B

Note: All radiated measurements were made in all three orthogonal planes. The values reported are the maximum values.

2. Technical Test

2.1 Summary of Test Results

The EUT has been tested according to the following specifications:

Standard	Test Type	Result	Notes
FCC Part 15, Paragraph 15.107	Conducted Test	PASS	Complies
FCC Part 15, Paragraph 15.109	Radiated Test	PASS	Complies

2.2 Measurement Uncertainty

Where relevant, the following measurement uncertainty levels have been estimated for tests performed on the EUT as specified in CISPR 16-4-2:

Measurement	Frequency	Uncertainty
Conducted emissions	0.15MHz~30MHz	1.72
Radiated emissions	30MHz ~ 300MHz	3.88
Radiated emissions	300MHz ~1000MHz	3.86
Radiated emissions	1000MHz ~18000MHz	5.28

This uncertainty represents an expanded uncertainty expressed at approximately the 95% confidence level using a coverage factor of $k=2$.

Consistent with industry standard (e.g. CISPR 22: 2006, clause 11, Measurement Uncertainty) determining compliance with the limits shall be based on the results of the compliance measurement. Consequently the measured emissions being less than the maximum allowed emission result in this being a compliant test or passing test.

The acceptable measurement uncertainty value without requiring revision of the compliance statement is based on conducted and radiated emissions being less than U_{CISPR} which is 3.6dB and 5.2dB respectively. KMO values (called U_{Lab} in CISPR 16-4-2) is less than U_{CISPR} as shown in the table above. Therefore, MU need not be considered for compliance.

3. Modifications

N/A

4. Conducted Power Line Test

4.1 Test Equipment

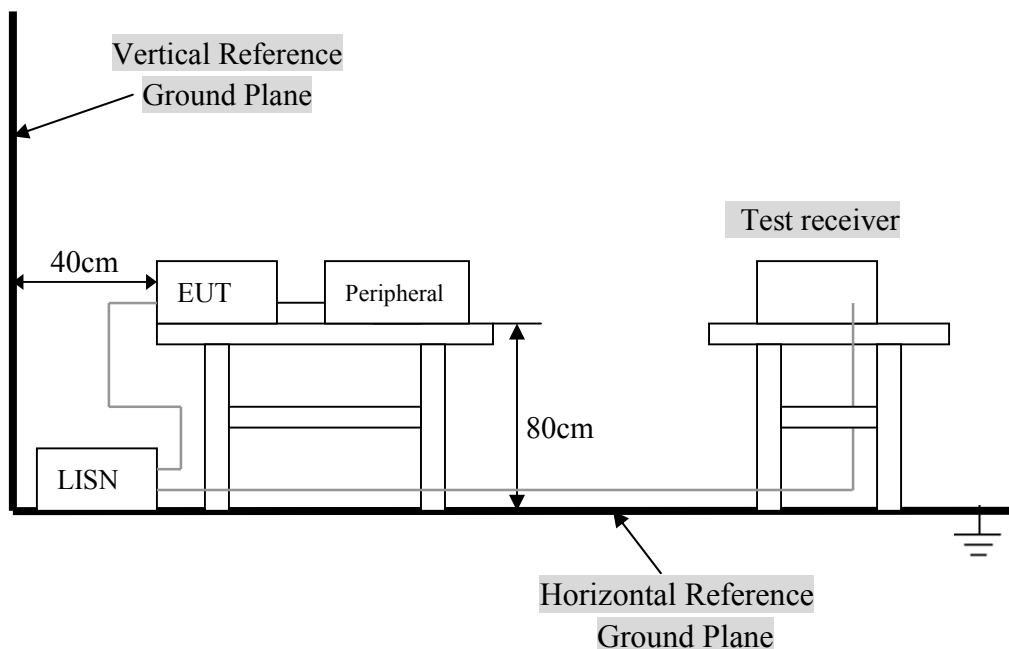
Please refer to Section 8 this report.

4.2 Test Procedure

The EUT and simulators are connected to the main power through a line impedance stabilization network (L.I.S.N.). This provides a 50 ohm/50uH coupling impedance for the measuring equipment. The peripheral devices are also connected to the main power through a LISN that provides a 50ohm/50uH coupling impedance with 50ohm termination.

Both sides of A.C. line are checked for maximum conducted interference. In order to find the maximum emission., the relative positions of equipment and all of the interface cables must be changed according to ANSI C63.4:2014 on conducted measurement. Conducted emissions were invested over the frequency range from 0.15MHz to 30MHz using a receiver bandwidth of 9kHz.

4.3 Test Setup



For the actual test configuration, Please refer to the related items – Photos of Testing.

4. 4 Configuration of The EUT

The EUT was configured according to ANSI C63.4:2014. All interface ports were connected to the appropriate peripherals. All peripherals and cables are listed below.

A. EUT

Device	Manufacturer	Model #	FCC ID
Outdoor Lawn Light	Same as applicant	LBS-019	2AJKN-LBS-019

B. Internal Devices

Device	Manufacturer	Model #	FCCID / DoC
N/A			

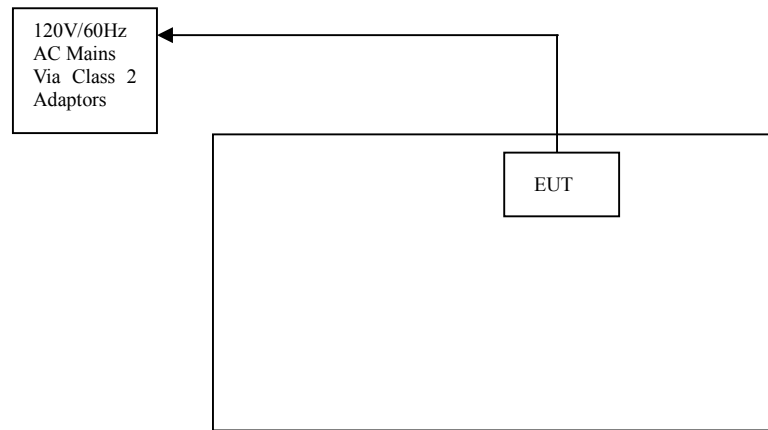
C. Peripherals

Device	Manufacturer	Model # Serial #	FCC ID/ DoC	Cable
N/A				

4.5 EUT Operating Condition

Operating condition is according to ANSI C63.4:2014.

- A. Setup the EUT and simulators as shown on follow.
- B. Enable RF signal and confirm EUT active.
- A. Modulate output capacity of EUT up to specification.



4.6 Conducted Power Line Emission Limits

Frequency Range (MHz)	Class A QP/AV (dBuV)	Class B QP/AV (dBuV)
0.15 – 0.5	79/66	66 –56/56 –46
0.5 – 5.0	73/60	56/46
5.0 – 30	73/60	60/50

Note: In the above table, the tighter limit applies at the band edges.

4.7 Conducted Power Line Test Result

Product	: Outdoor Lawn Light	Test Mode	: Normal Link / Auto
Test Item	: Conducted Emission Data	Temperature	: 25 °C
Test Voltage	: DC 5V	Humidity	: 56%RH
Test Result	: PASS	Adapter Model	:

The frequency spectrum from 0.15 MHz to 30 MHz was investigated. All readings are quasi -peak values with a resolution bandwidth of 9 KHz.

- Temperature : 26 °C
- Humidity : 53 % RH

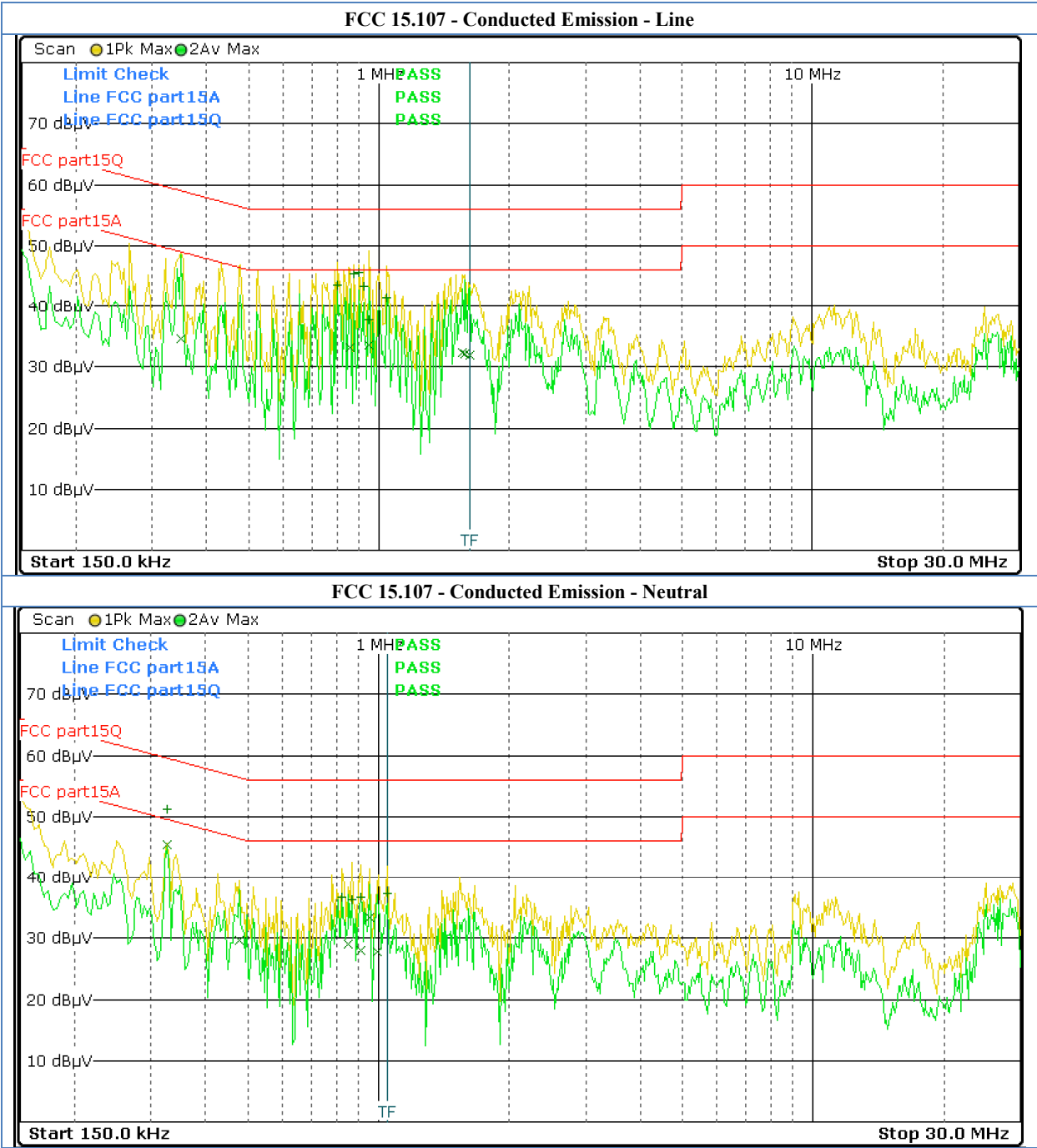
Adapter Model: RKPO-UL051000

FCC 15 Class B										
Frequency (MHz)	Read Level (dBuV)		Factor (dB)	Emission (dBuV)		Line/ Neutral	Limit (dBuV)		Margin (dBuV)	
	QP	AV		QP	AV		QP	AV	QP	AV
0.802	33.08	24.25	10.40	43.48	34.65	Line	56.00	46.00	-12.52	-11.35
0.154	40.90	33.09	10.30	51.2	43.39	Neutral	65.78	55.78	-14.58	-12.39
0.878	34.89	23.25	10.40	45.29	33.65	Line	56.00	46.00	-10.71	-12.35
0.278	33.32	25.30	10.30	43.62	35.6	Neutral	60.88	50.88	-17.26	-15.28
0.902	35.15	27.47	10.40	45.55	37.87	Line	56.00	46.00	-10.45	-8.13
0.326	39.59	32.48	10.30	49.89	42.78	Neutral	59.55	49.55	-9.66	-6.77
0.946	27.25	22.16	10.40	37.65	32.56	Line	56.00	46.00	-18.35	-13.44
0.930	30.88	22.65	10.40	41.28	33.05	Neutral	56.00	46.00	-14.72	-12.95
1.042	31.00	21.84	10.50	41.50	32.34	Line	56.00	46.00	-14.50	-13.66
0.978	28.61	22.81	10.40	39.01	33.21	Neutral	56.00	46.00	-16.99	-12.79
1.558	25.70	21.84	10.50	36.20	32.34	Line	56.00	46.00	-19.80	-13.66
1.626	23.88	20.99	10.40	34.28	31.39	Neutral	56.00	46.00	-21.72	-14.61

Note: NF = No Significant Peak was Found.

Note:

- 1.Uncertainty in conducted emission measured is <+/-2dB.
- 2.The emission levels of other frequencies were very low against the limit.
- 3.All Reading Levels are Quasi-Peak and Average value.
- 4.Emission = Meter Reading + Factor; Factor = Insertion Loss + Cable Loss.
- 5.Margin Value = Emission Level - Limit Value.



5. Radiated Emission Test

5.1 Test Equipment

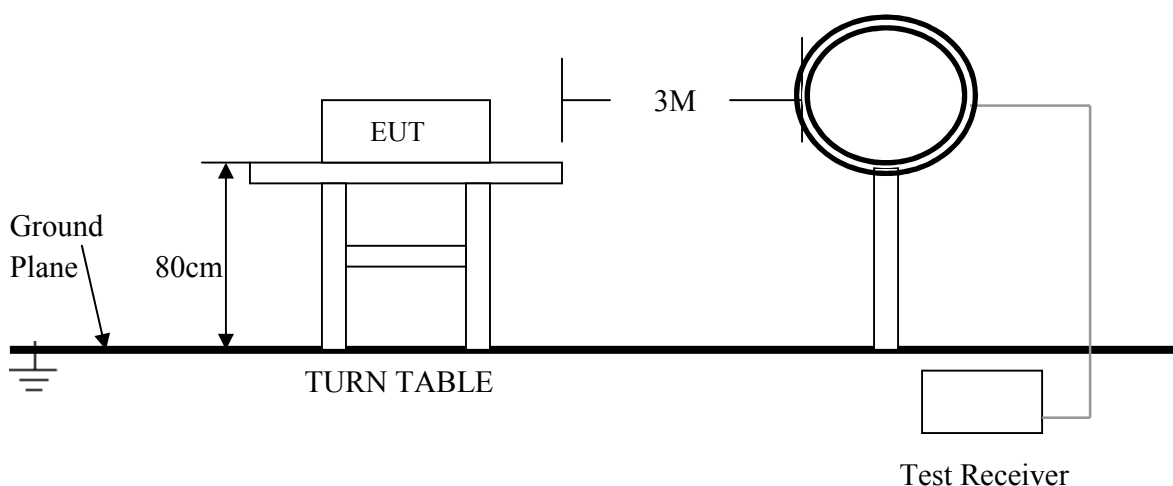
Please refer to Section 8 this report.

5.2 Test Procedure

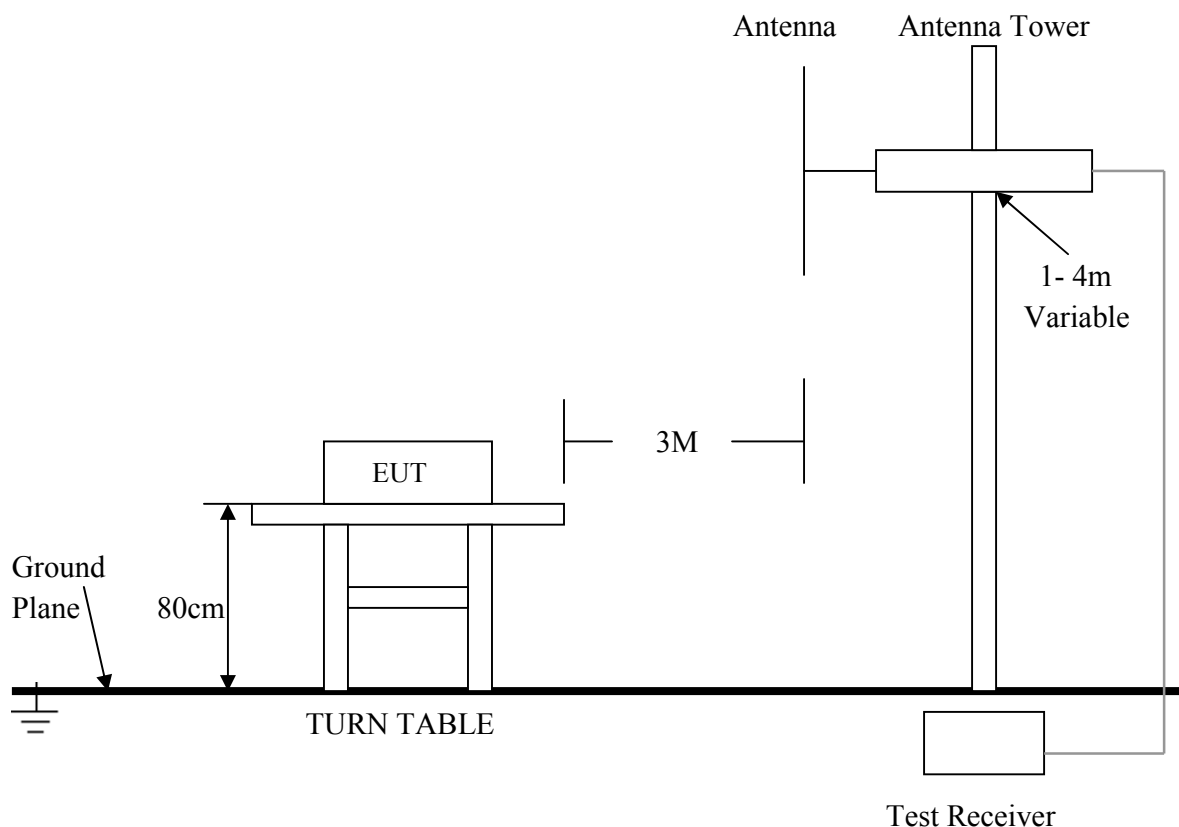
1. The EUT was tested according to ANSI C63.4:2014.
2. The EUT, peripherals were put on the turntable which table size is 1m x 1.5 m, table high 0.8 m, and which is 1.5 m high for above 1 GHz. All set up is according to ANSI C63.4:2014 .
3. The frequency spectrum from 9 kHz to 25 GHz was investigated. All readings from 9 kHz to 150 kHz are quasi-peak values with a resolution bandwidth of 200 Hz. All readings from 150 kHz to 30 MHz are quasi-peak values with a resolution bandwidth of 9 KHz. All readings from 30 MHz to 1 GHz are quasi-peak values with a resolution bandwidth of 120 KHz. All readings are above 1 GHz , peak values with a resolution bandwidth of 1 MHz . Measurements were made at 3 meters.
4. The emissions from the EUT were measured continuously at every azimuth by rotating the turntable. The Receiving antenna high is varied from 1 m to 4 m high to find the maximum emission for each frequency. Emissions below 30MHz were measured with a loop antenna while emission above 30MHz were measured using a broadband E-field antenna.
5. Maximizing procedure was performed on the six (6) highest emissions to ensure EUT compliance is with all installation combinations. All data was recorded in the peak detection mode. Quasi-peak readings was performed only when an emission was found to be marginal (within -4 dB of specification limit), and are distinguished with a "QP" in the data table.
6. Each emission was to be maximized by changing the polarization of receiving antenna both horizontal and vertical. In order to find out the max. emission, the relative positions of this transmitter(EUT) was rotated through three orthogonal axes according to the requirements in Section 8 and 13 of ANSI C63.4:2014

5.3 Radiated Test Setup

For Frequencies below 30 MHz



For the actual test configuration , please refer to the related items – Photos of Testing

For Frequencies above 30 MHz

For the actual test configuration , please refer to the related items – Photos of Testing

5. 4 Configuration of The EUT

Same as section 4.4 of this report

5. 5 EUT Operating Condition

Same as section 4.5 of this report

5. 6 Radiated Emission Limit

All emission from a digital device, including any network of conductors and apparatus connected thereto, shall not exceed the level of field strength specified below:

Frequencies in restricted band are complied to limit on Paragraph 15.109.

Frequency (MHz)	Distance (m)	Field Strength (dBuV/m)
30 - 88	3	40.0
88 - 216	3	43.5
216 - 960	3	46.0
Above 960	3	54.0

Note:

1. In the emission tables above, the tighter limit applies at the band edges.
2. Distance refers to the distance between measuring instrument, antenna, and the closest point of any part of the device or system.
3. The lower limit shall apply at the transition frequencies.

5. 7 Radiated Emission Test Result

Product	: IP PBX	Test Mode	: Normal Link / Auto
Test Item	: Fundamental Radiated Emission Data	Temperature	: 25 °C
Test Voltage	: DC 12V	Humidity	: 56%RH
Test Result	: PASS	Model	:

For Frequency below 30MHz

Freq. (MHz)	Emission (dBuV/m) QP Detector	HORIZ / VERT	Limits (dBuV/m)	Margin (dB)
N/A				
N/A				
N/A				
N/A				
N/A				
N/A				

Note:

- (1) All Readings below 1GHz are Quasi-Peak, above are performed with peak and/or average measurements as necessary.
- (2) "N/A" remark, if no specific emissions from the EUT are recorded (ie: margin>20dB from the applicable limit) and considered that's already beyond the background noise floor.
- (3) Emission Level = Reading Level + Probe Factor + Cable Loss.

For Frequency from 30MHz to 1GHz

Adapter Model: RKPO-UL051000

FCC 15 Class B						
Frequency (MHz)	Read Level (dBuV)	Factor (dB)	Emission (dBuV/m)	Horiz./ Vert.	Limit (dBuV/m)	Margin (dB)
59.960	12.08	10.66	22.74	Horiz./	40.0	-17.26
54.600	11.07	10.66	21.73	Vert.	40.0	-18.27
67.440	13.09	8.81	21.90	Horiz./	40.0	-18.10
59.960	5.94	10.66	16.60	Vert.	40.0	-23.40
87.800	4.83	7.43	12.26	Horiz./	40.0	-27.74
91.800	10.90	7.93	18.83	Vert.	43.5	-24.67

Note:

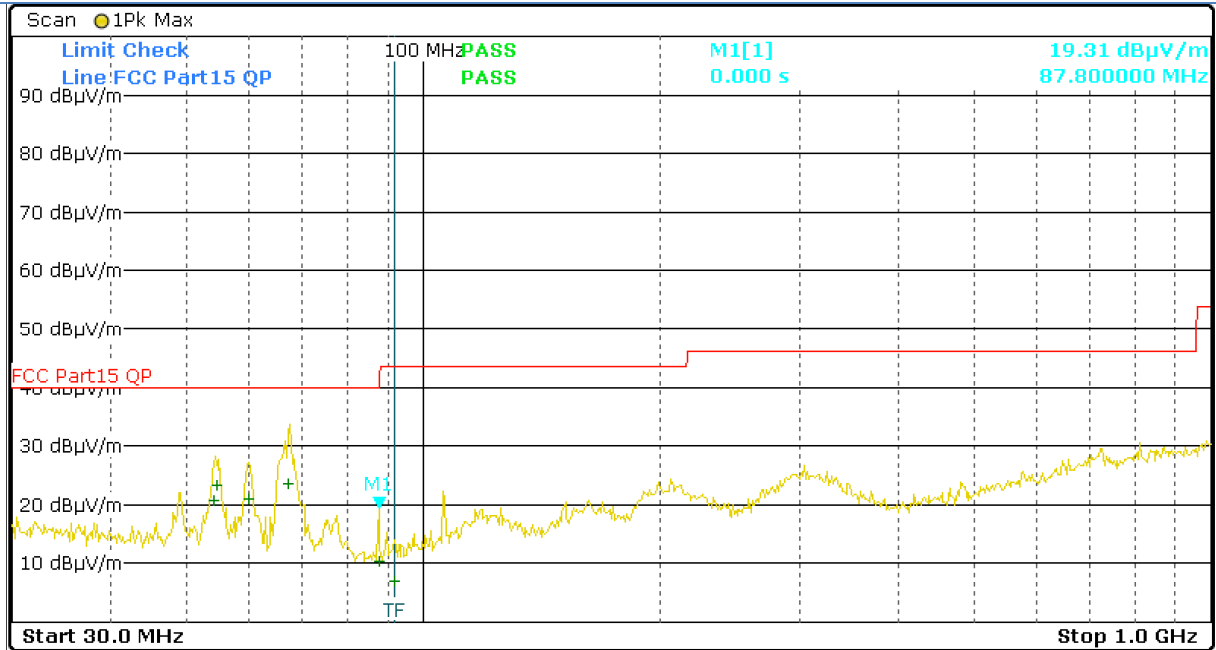
- (1) All Readings below 1GHz are Quasi-Peak, above are performed with peak and/or average measurements as necessary.
- (2) "N/A" remark, if no specific emissions from the EUT are recorded (ie: margin>20dB from the applicable limit) and considered that's already beyond the background noise floor.
- (3) Emission Level = Reading Level + Probe Factor + Cable Loss.

Frequency above 1 GHz

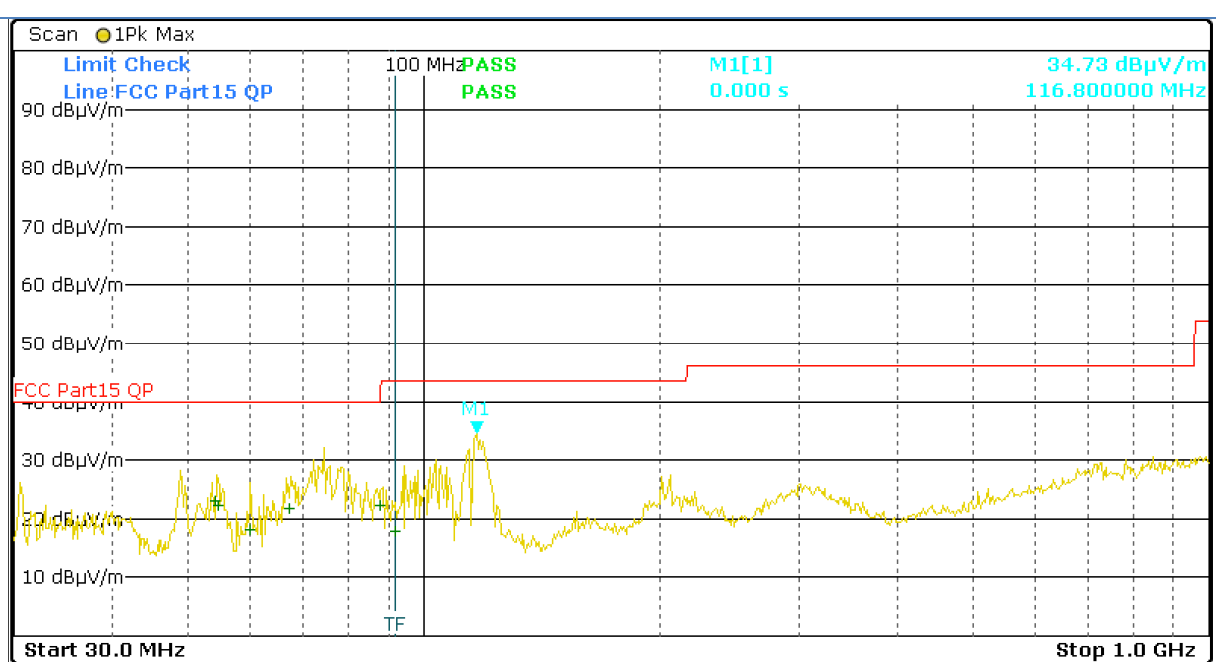
FCC 15 Class B										
Frequency (MHz)	Read Level(dBuV)		Factor (dB)	Emission(dBuV/m)		Horiz./ Vert.	Limit (dBuV/m)		Margin(dB)	
	PK	AV		PK	AV		PK	AV	PK	AV
1023.600	39.14	31.26	-2.64	36.50	28.62	Horiz./	74.0	54.0	-37.50	-25.38
1228.320	36.54	31.47	-1.34	35.20	30.13	Vert.	74.0	54.0	-38.80	-23.87
1126.000	37.47	30.99	-1.31	36.16	29.68	Horiz./	74.0	54.0	-37.84	-24.32
1126.000	33.94	28.47	-1.31	32.63	27.16	Vert.	74.0	54.0	-41.37	-26.84
1689.630	32.61	27.38	-0.96	31.65	26.42	Horiz./	74.0	54.0	-42.35	-27.58
2632.000	27.87	21.90	2.41	30.28	24.31	Vert.	74.0	54.0	-43.72	-29.69

- Note:**
- (1) All Readings below 1GHz are Quasi-Peak, above are performed with peak and/or average measurements as necessary.
 - (2) Emission Level = Reading Level + Probe Factor + Cable Loss.

FCC 15.109 - Radiated Emission - Horiz.



FCC 15.109 - Radiated Emission - Vert.



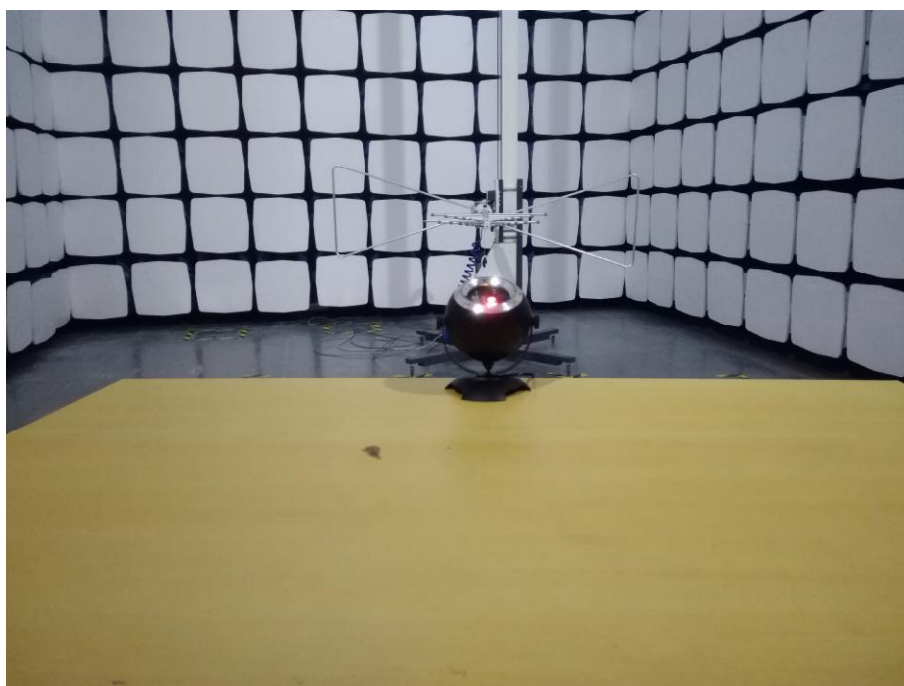
6. Photo of Testing

6.1 Emission test view

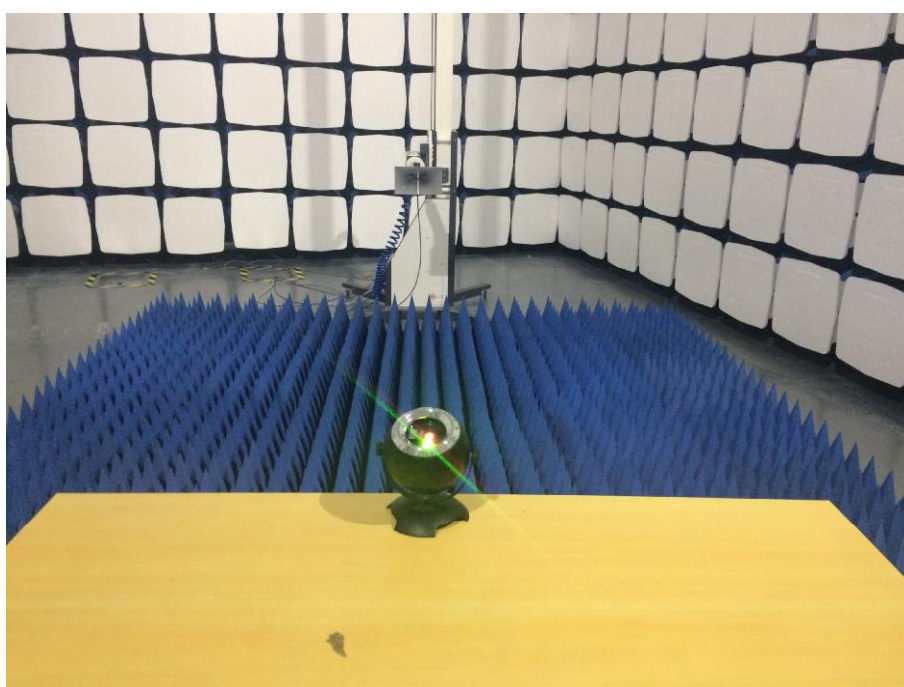
Conducted Emission test view



Radiated Emission test view (Frequency below 1GHz)

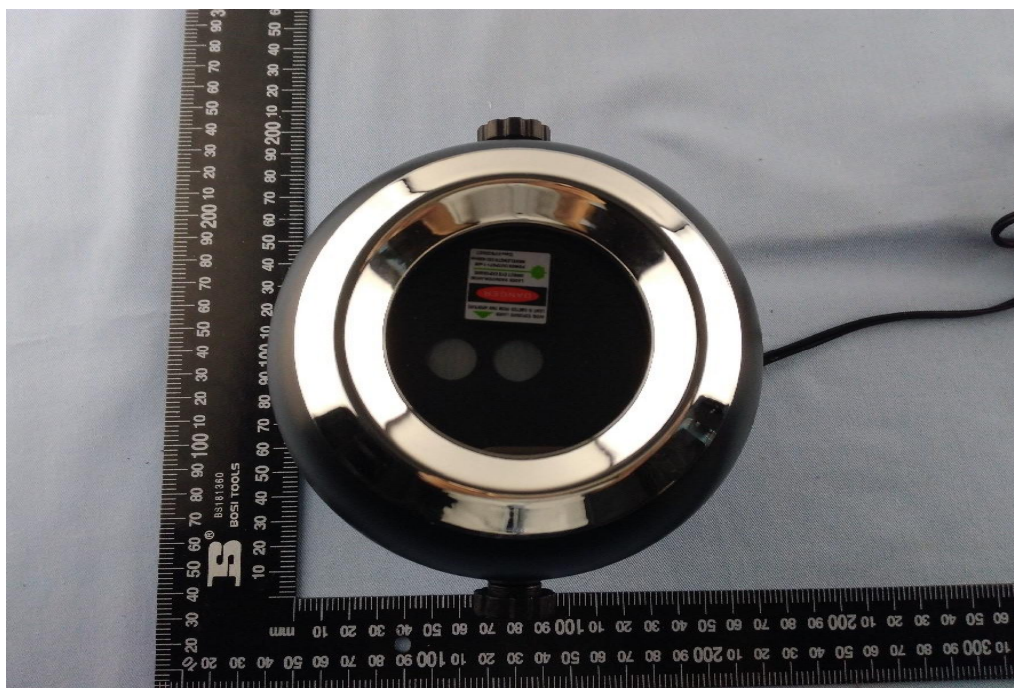


Radiated Emission test view (Frequency above 1GHz)



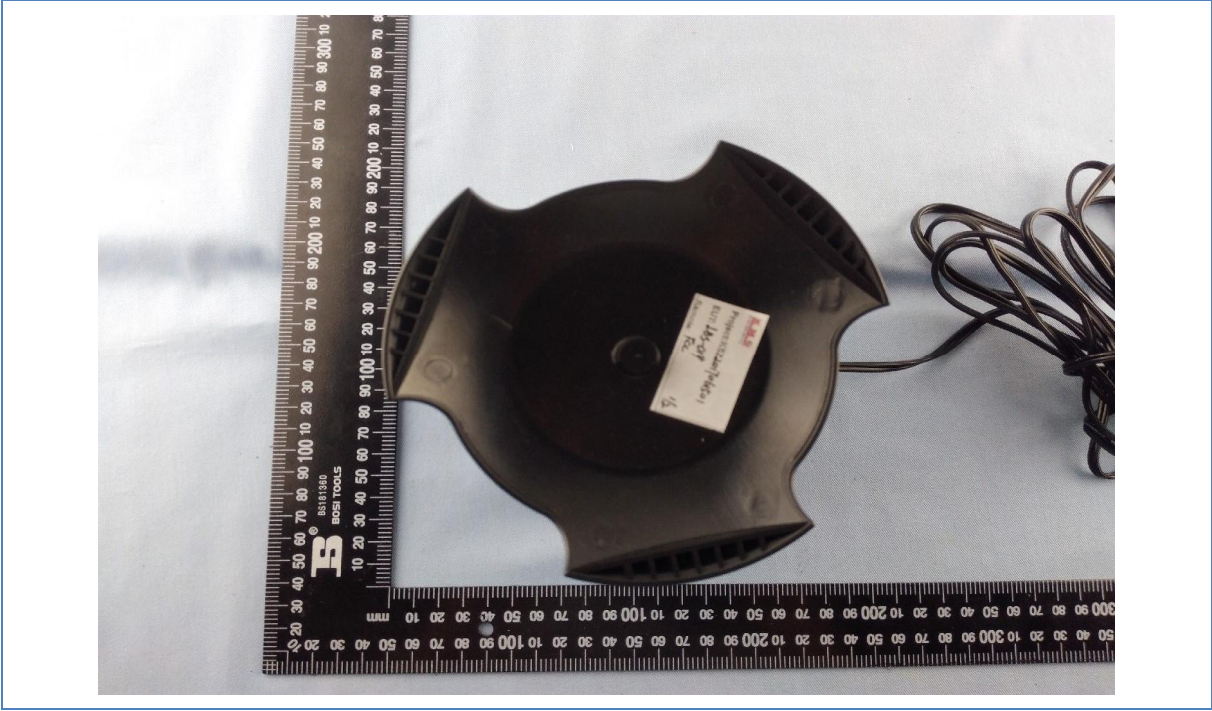
6.2 Photograph - EUT

EUT top view

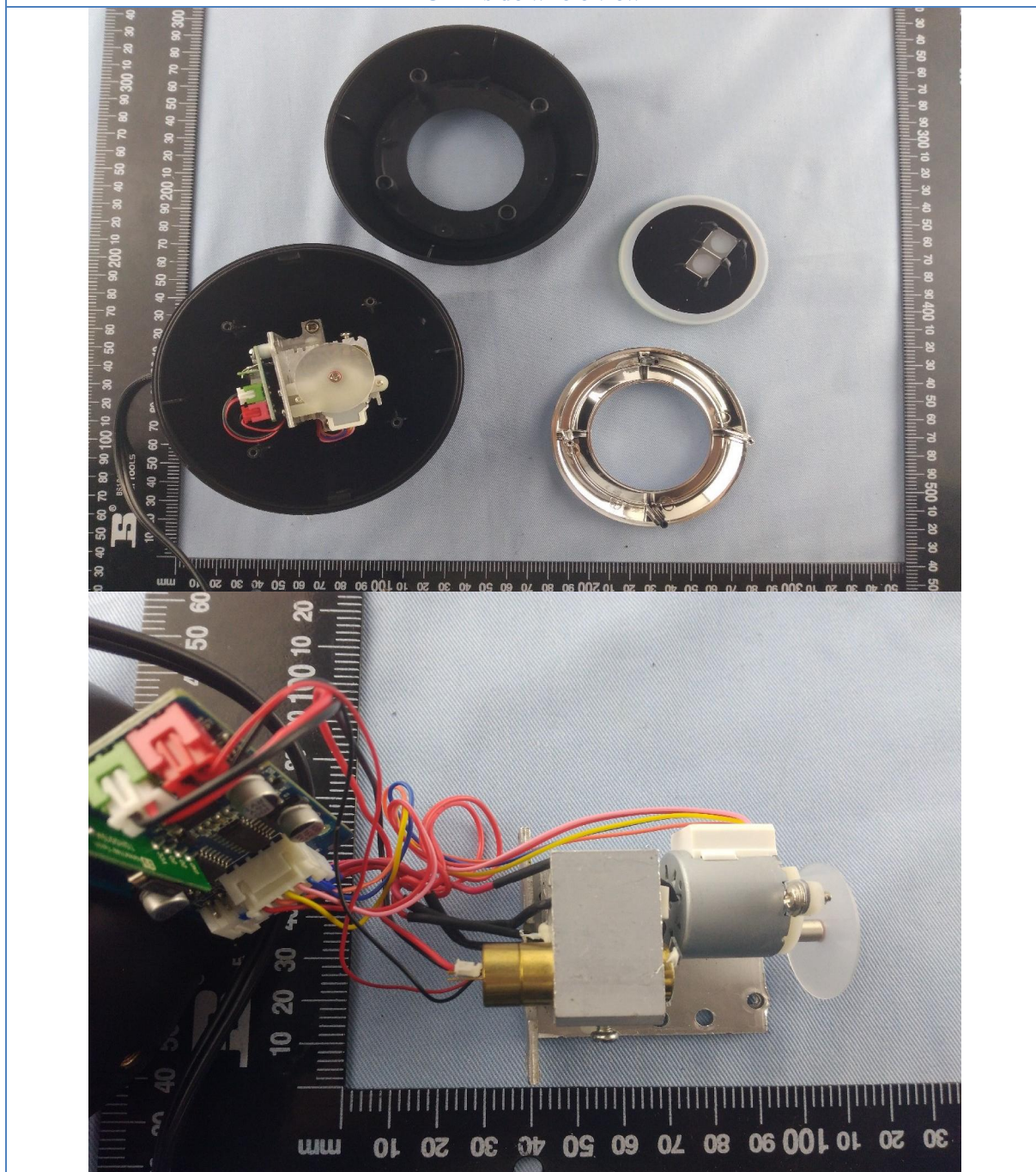




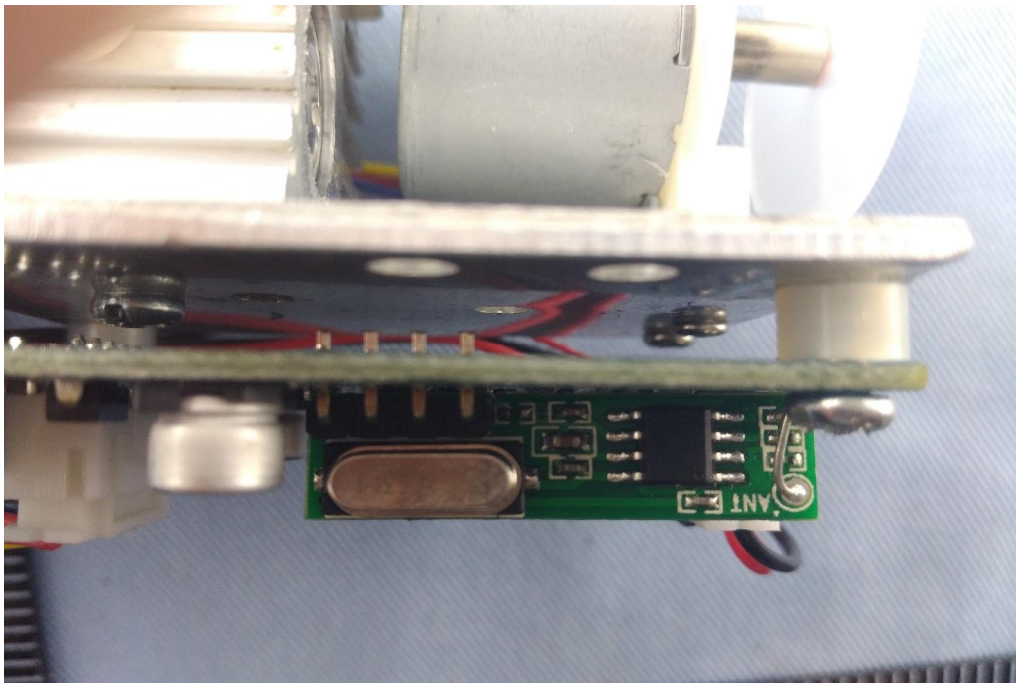
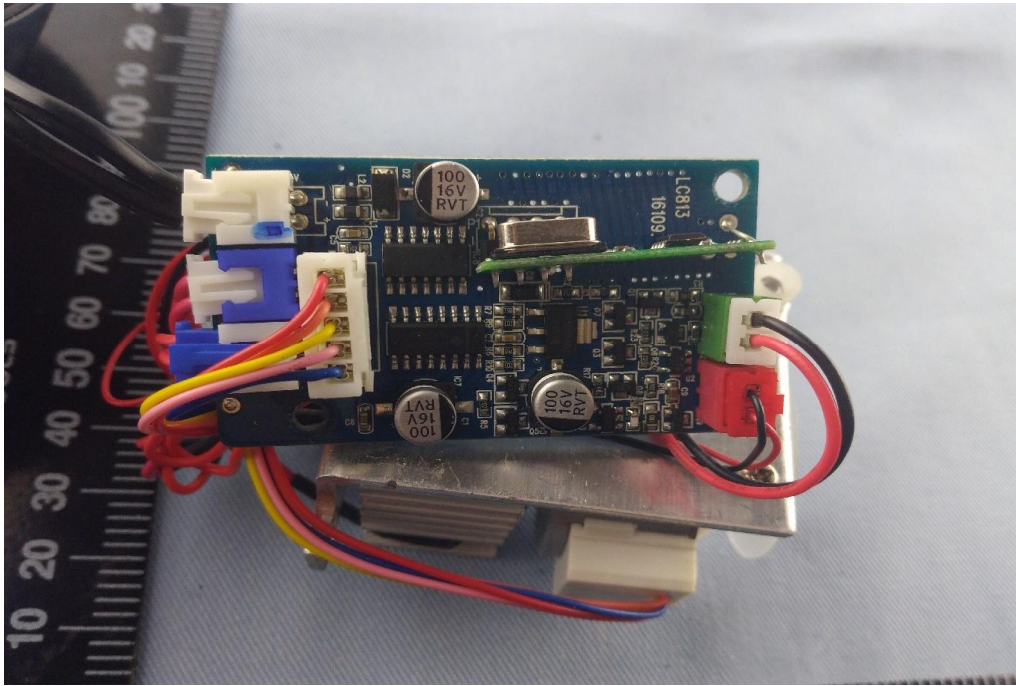
EUT bottom view



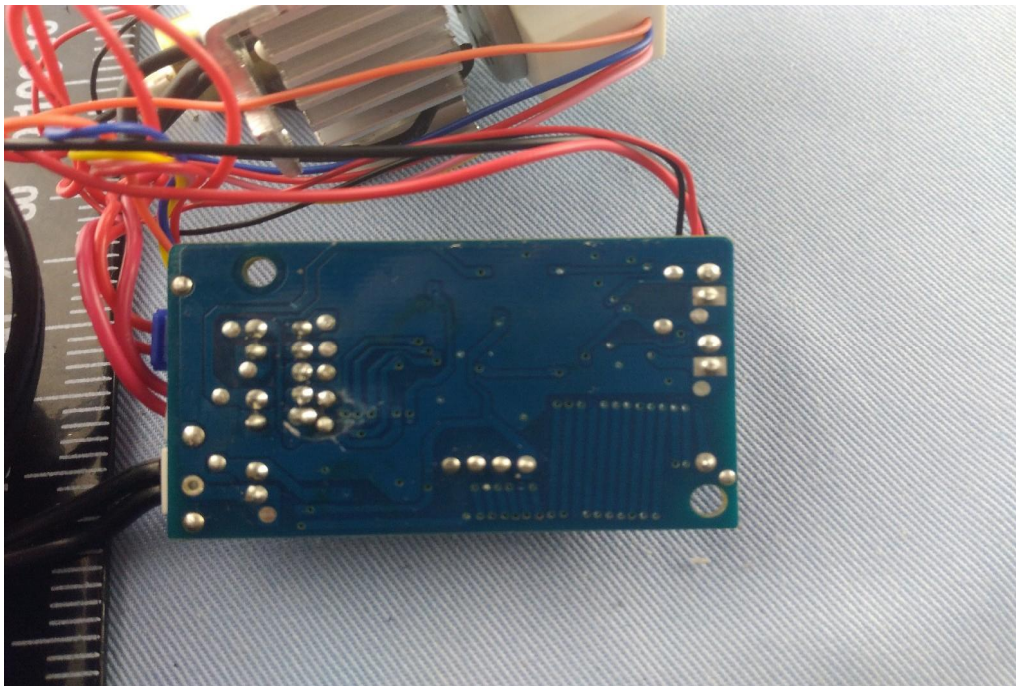
EUT inside whole view



Main board component side



Main board solder side



Adapter top view



Adapter side view



7. FCC ID Label

FCC ID: 2AJKN-LBS-019

The following note shall be conspicuously placed in the users manual: “**Operation is subject to the following two conditions: (1) this device may not cause interference, and (2) this device must accept any interference, including interference that may cause undesired operation of this device.**”

The Label must not be a stick-on paper label. The Label on these products must be permanently affixed to the product and readily visible at the time of purchase and must last the expected lifetime of the equipment not be readily detachable.

Proposed Label Location on EUT



8. Test Equipment

The following test equipments were used during the radiated & conducted emission test:

Equipment/ Facilities	Manufacturer	Model #	Serial No.	Due Date
Turntable	Innco systems GmbH	CT-0801	KMO-SZ114	NCR
Antenna Tower	Innco systems GmbH	MM4000-PP	KMO-SZ115	NCR
Controller	Innco systems GmbH	CO2000	KMO-SZ116	NCR
Pre-Amplifier	Agilent	87405C	KMO-SZ155	Dec.6, 2017
EMI Test Receiver	Rohde & Schwarz	ESPI7	KMO-SZ002	June 27, 2018
Spectrum Analyzer	Rohde & Schwarz	FSP40	KMO-SZ003	June 27, 2018
Loop Antenna	Rohde & Schwarz	HFH2-Z2	KMO-SZ004	August 19, 2018
Trilog-Super Broadband Antenna	SCHWARZBECK	VULB9161	KMO-SZ005	August 27, 2018
Broad-Band Horn Antenna	SCHWARZBECK	BBHA 9120D	KMO-SZ007	August 19, 2018
Broad-Band Horn Antenna	SCHWARZBECK	BBHA 9170	9170-359	Jan.9, 2018
AMN	Rohde & Schwarz	ESH3-Z5	KMO-SZ009	June 27, 2018
Pulse Limiter	SCHWARZBECK	VTSD 9561-F	KMO-SZ077	Nov.29, 2017
KMO Shielded Room	KMO	KMO-001	KMO-SZ036	NCR
Coaxial Cable with N-Connectors	SCHWARZBECK	AK9515H	KMO-SZ037	Sep.18, 2017
Power Meter	Rohde & Schwarz	OSP-B157	KMO-HK015	Nov.6, 2017
3m Anechoic Chamber	KMO	KMO-3AC	KMO-3AC-1	Nov.12, 2017