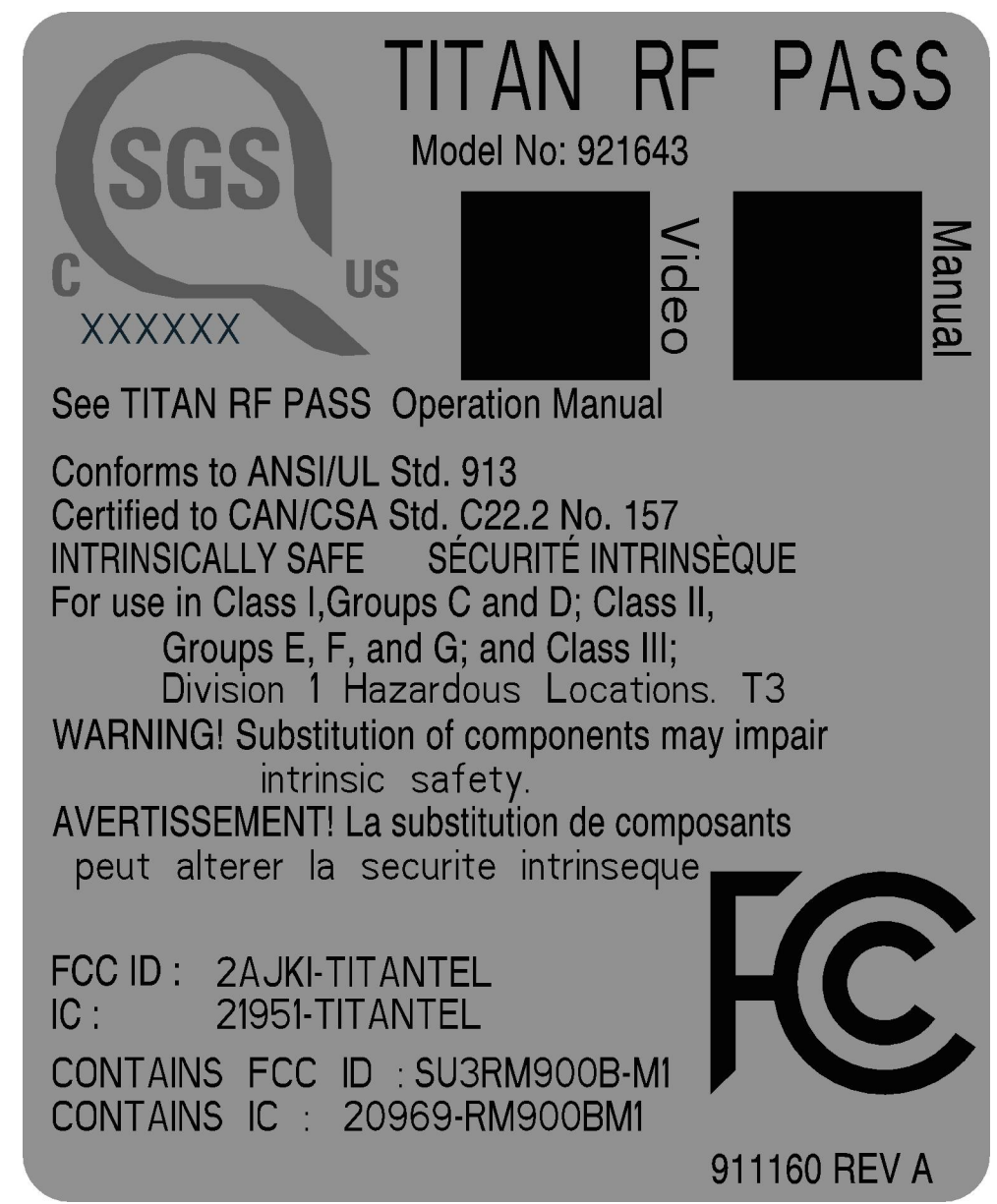
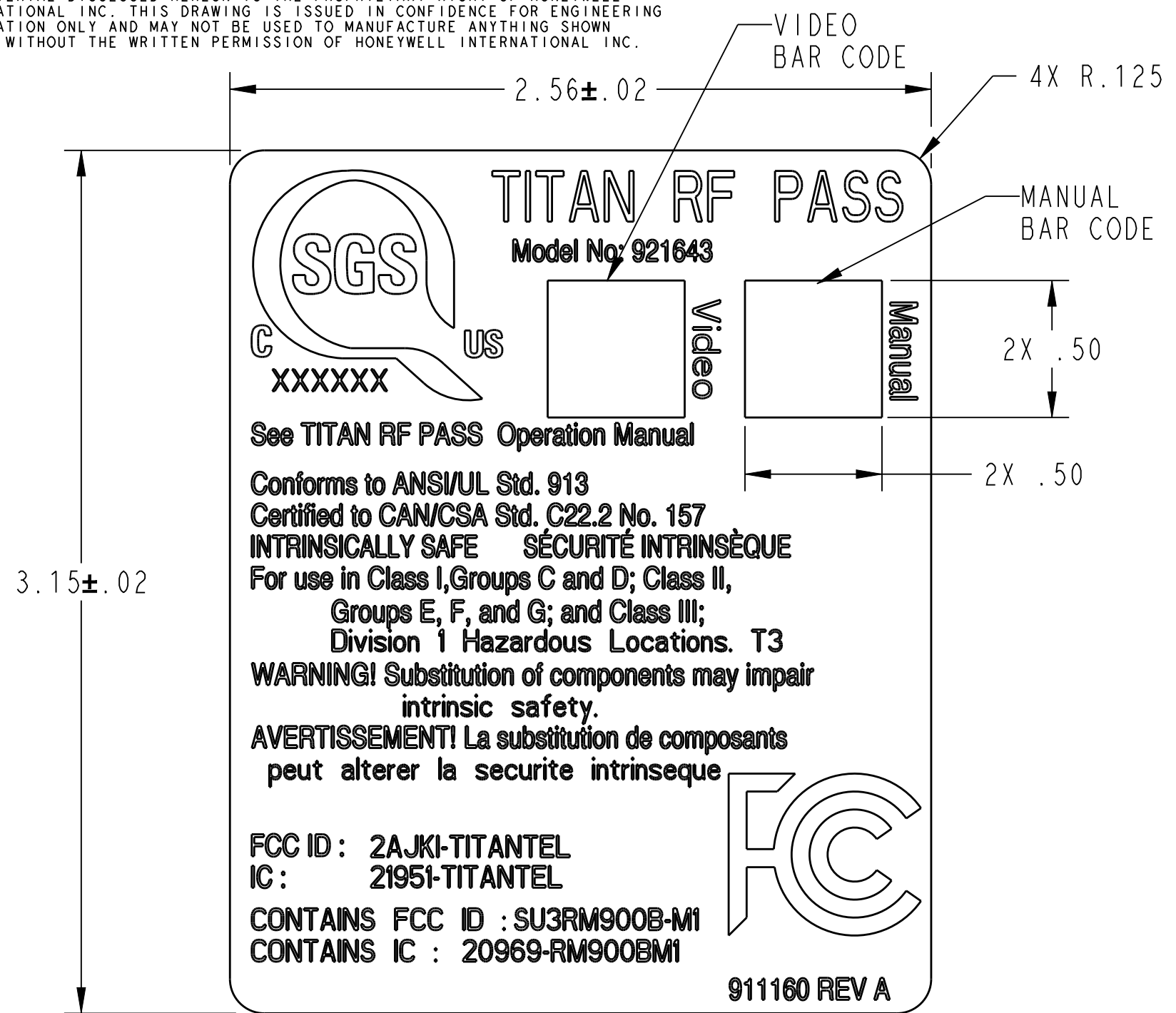


THE MATERIAL DISCLOSED HEREON IS THE PROPRIETARY RIGHT OF HONEYWELL INTERNATIONAL INC. THIS DRAWING IS ISSUED IN CONFIDENCE FOR ENGINEERING INFORMATION ONLY AND MAY NOT BE USED TO MANUFACTURE ANYTHING SHOWN HEREON WITHOUT THE WRITTEN PERMISSION OF HONEYWELL INTERNATIONAL INC.

REVISIONS					
LTR	E.O. TYPE & NO.	DRAWN BY	DATE	APPROVED	DATE
A	ECN #2018-4930	BNK	02-01-19		



REFER TO ARTWORK, VIEW IS FOR REFERENCE ONLY

ARTWORK TO BE AS PER IMAGE SHOWN

SCALE 2/1

PRINTED MATERIAL SPECIFICATION (ART WORK NO.: 911160A-ART)

- I. ART WORK OVERALL DIMENSIONS: 2.56±.02 X 3.15±.02 X .125 CORNER RADIUS
- II. MATERIAL 1: NONE
MATERIAL 2: NONE
- III. PRINT COLORS(S): BLACK ON PANTONE 423, GREY BACKGROUND
- IV. PROTECTIVE FINISH: 1 MIL CLEAR PPET LAMINATION W/PERM ADHESIVE
- V. SUBSTRATE MATERIAL: 2 MIL WHITE C.I. 40#BG POLYESTER W/PERM ADHESIVE
- VI. ADHESIVE: S8020 PERMANENT, PRESSURE SENSITIVE, WATER-RESISTANT
- VII. SCORING: NONE
- VIII. FOLDING: NONE
- IX. STAPLING: NONE
- X. RECOMMENDED PACKAGING: ROLLS
- XI. SPECIAL INSTRUCTIONS: FONT - SANS SERIF, OPTIONAL WEATHERING AND TEMPERATURE EXTREMES.

◆ 2. C OF C REQUIRED FOR MATERIALS AND ALL LISTED CHARACTERISTICS.
1. MAIN BODY TEXT TO BE 2MM HIGH, MINIMUM. SGS LOGO TO BE 10MM HIGH MINIMUM.

NOTES: UNLESS OTHERWISE SPECIFIED

MI OR MITP:
CAD FILE NAME: PRO/E 911160

UNLESS OTHERWISE SPECIFIED: PROJECTION: MATERIAL:
 DIMENSIONS ARE IN INCHES
 TOLERANCES: .XX±0.03 .XXX±0.005
 ANGLES: ± 0.5
 SURFACE ROUGHNESS:
 ALL DIA'S
 REMOVE BURRS AND BREAK SHARP EDGES: MAX MAX
 FILLET AND CORNER RADII:
 DIMENSIONING PER ANSI Y14.100-2013
 INTERPRET THREADS PER FED-STD-H28
 DO NOT SCALE DRAWING
 ◆ DENOTES KEY CHARACTERISTIC PER EP-155

QUANTITY	PART NUMBER	DESCRIPTION	DRAWING NUMBER	ITEM NO.
PARTS LIST				
Honeywell Safety Products 3001 South Susan Street - Santa Ana, CA 92704				
IS, RFPASS, LABEL, TELEMETRY				
SIZE	CAGE CODE	DWG. NO.		
C	56434	911160		
SCALE: 2/1 AND NOTED				SHEET 1 OF 1