

Thanks for choosing Maonocaster E2 podcast console. Please read the User manual carefully to have a better using experience.

Description
Maonocaster E2 is a professional sound card for audio/video recording and streaming. It has two mic input interfaces allows connection with instruments like guitar, and supports background music from audio input via Bluetooth and AUX connection. There are 2 analog and 1 USB audio output channels allows simultaneous connection with 3 streaming devices. The powerful built-in audio chip delivers professional studio level audio and provides rich mixing adjustment options. 11 custom buttons for personalized effects setting and unique streaming styles.

Product Features

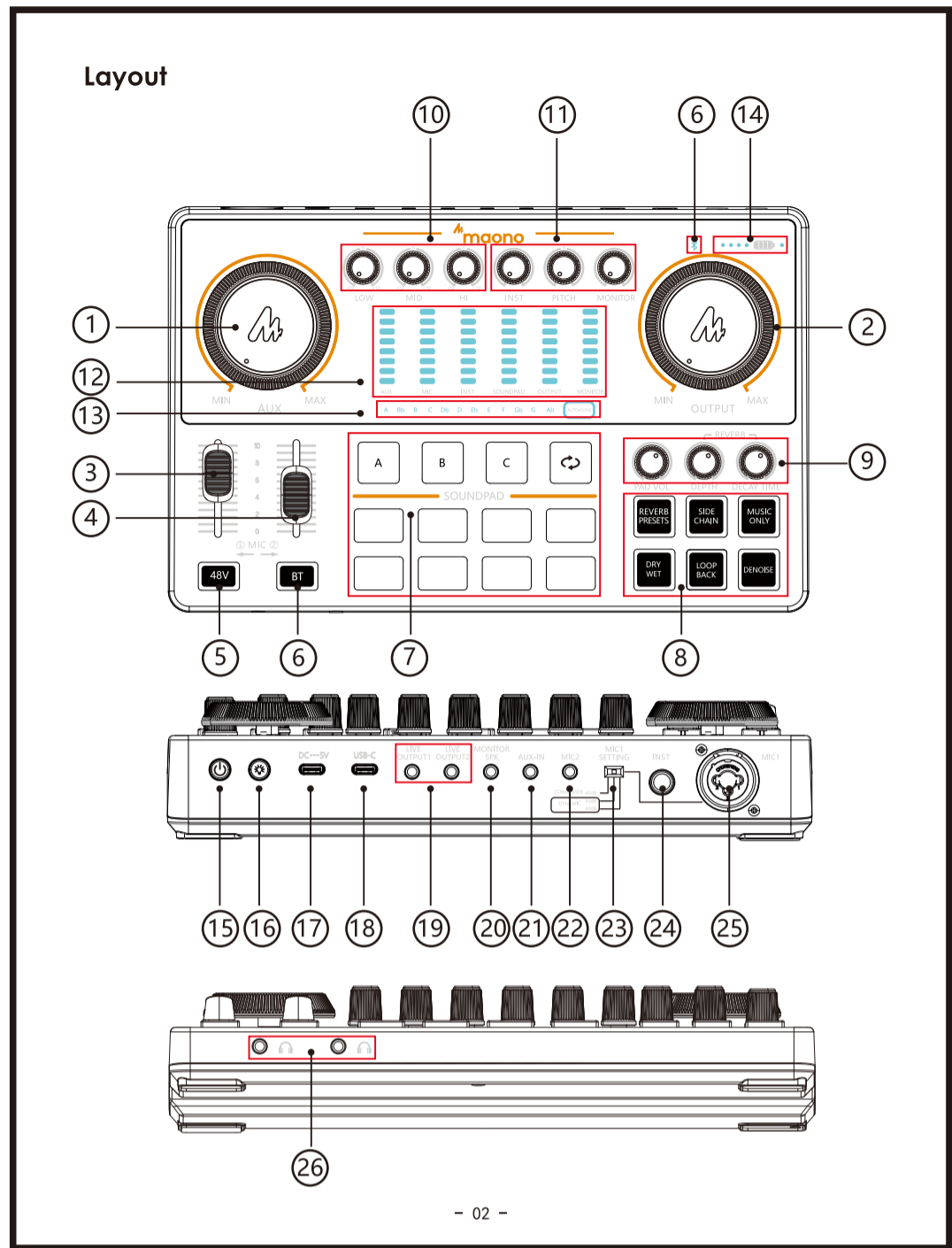
1. Supports two mic input at the same time, great for two-person streaming.
2. Individual audio input interface to import kinds of background music.
3. Well compatible with dynamic mic features low latency.
4. Separate control of mic audio and background music for easy adjustment of audio volume.
5. Side chain function will lower the volume of background music and turns up the host's voice.
6. 12-Step Auto-Tune Control.
7. Audio denoise function for blocking background noise quickly and delivering clear voice.
8. Three output channels for streaming in different platforms.
9. Type-C digital audio output interface.
10. Compatible with Windows and macOS.
11. Built-in Lithium polymer batteries offers 8 hours working time, ideal for outdoor streaming.
12. +48V phantom power is capable of powering XLR condenser mic.

Applicable Situation
Live broadcast on mobile phone/tablet/computer
Applicable app/software: Tik Tok/SNS Platform

Specification

Data Transmission	USB-C	Battery Type	Li-Polymer
Frequency Response	20Hz-20kHz	Battery Capacity	2000mAh
THD	THD<0.05% 3kHz	Charge Parameter	5V/1A
Headset Output Power	20mW/320-2kHz/THD+N<1%	Charge Time	Appx. 3h
Sample Rate	48kHz/24bit	Battery Life	Appx. 8h (High level keypad brightness)
Wireless Connection	Bluetooth 4.2	Dimension	124.5*76*27.65CM (button included)

Accessory List
Maonocaster E2 Podcast Console 3.5mm TRRS Audio Cable
User Manual USB-A to USB-C Cable



1. Background music adjustment
Turning the knob clockwise to adjust background music input with Bluetooth and AUX connection.

2. Mic control
Turning the knob clockwise to control mic gain in device connected via USB-C streaming port.

3. Mic 1 volume control
Push up the fader to turn up mic 1 volume.

4. Mic 2 volume control
Push up the fader to turn up mic 2 volume.

5. 48V phantom power button
Press the power button to turn on/off the power supply for XLR mic. On/off operation will mute all audio for 2-3s and remove pop sound.

6. Bluetooth connection/Bluetooth indicator
6.1 Powering on the sound card, Bluetooth indicator will blink, Bluetooth search and automatically pair with paired mobile phone, then indicator light turned to solid.
6.2 Long press Bluetooth button for 2 seconds, indicator will turn off and end pairing.

7. Custom audio effect button
Maonocaster E2 provides 11 custom audio effect buttons. Uses can record songs, music, beats via mic, external audio input, Bluetooth input, and save them to Maonocaster E2.
Press A/B/C button to record 1 minute audio effect, press Loop Button to repeat playing an audio effect. Press the other 8 buttons to record 20s (Max Audio effect).
By default, there is no customized audio effect.
Recording: with audio card on, connect it to mic/external audio input device/Bluetooth devices, long press any custom button for more than 3 seconds, Release press until the indicator slowly blinks and enters recording mode. Short press the button again to stop recording or record until the indicator stops blinking, which indicates max time length audio is recorded.
Note: Each custom audio effect button has limited storage, when there is no storage left, it will stop recording and indicator will go off automatically.
Delete recording: Long press a custom button with existing customized audio for more than 2 seconds, indicator will flash quickly and start deleting audio. Lights of indicators a successful audio delete.

7.3 Play customized audio: short press a custom button with existing customized audio to play audio, if indicator blinks after press, turns off when press is released, it means no customized audio is saved.

8. Audio effect mode
There is six audio effect buttons including REVERB PRESETS, SIDE CHAIN, MUSIC ONLY, DRY, WET, LOOP BACK, DENOISE.
8.1 Reverb Presets Mode has 6 preset reverberate effect including Studio, KTV, Church, Hall, Valley, Room. Switching to have different reverberate effect.
8.2 Side Chain Mode can be activated to lower the volume of background music and turn up the host's voice. A mode suitable for talking while streaming. Indicator light turns on/off when side chain mode is on/off.
8.3 Music Only Mode can remove vocals in background music and get instrumental Karaoke track. Indicator light turns on/off when Music Only mode is on/off.
8.4 DRY WET Mode: Activate Dry mode, indicator light will be turned on, only mic input audio will be recorded. Activate Wet mode, indicator light will be turned off, all reverberated and background audio will be recorded and exported to output devices.
8.5 Loopback Mode
Turning on Loopback will allow the Maonocaster to record the system audio from the USB-C input. If turned off you can still hear the system audio from monitoring but it will not be recorded.
8.6 Denoise Mode automatically blocks background noise, ensures the clearness of audio recording. Indicator light turns on/off when Denoise Mode is on/off.

9. Reverb Control knob
9.1 Audio effect volume knob
Turning the knob clockwise to adjust custom audio effect volume.
9.2 Reverb depth control knob
Rotate the knob clockwise to adjust the reverberation depth.
9.3 Reverb decay time control knob
Rotate the knob clockwise to control reverberation decay time.

10. Low, middle, high pitch changer
Adjust mic audio pitch to get rich low pitch, smooth middle pitch and clear high pitch.

11. Instrument, Pitch, Monitor knob
11.1 Instrument input audio volume control knob
Turning the knob clockwise to adjust Instrument audio volume.
11.2 Pitch effect control knob
Turning the knob clockwise to control mic 1/2 input audio voice-changing effect, voice will change from low Male effect to high pitch Female effect.
11.3 Monitor headphone volume control knob

Turning the knob clockwise to control volume of monitor headphone.

12. Level Display
Color of the Indicator: 1-5 Green; 6-7 Orange; 8 Red
Display the level of accompaniment input, microphone inputs, music instrument input, sound pad volume, monitoring volume, and recording volume.

13. Auto-Tune
There is 12-Step Auto-Tune including A, Bb, B, C, D, D, Eb, E, F, Gb, G, Ab. Short touch an Auto-Tune touch button to switch to the auto-tune. Long touch an Auto-Tune button to turn it off.

14. Battery power indicator light
4 LED light on indicates battery power is 100%.
3 LED light on indicates battery power is 75%.
2 LED light on indicates battery power is 50%.
1 LED light on indicates battery power is 25%.
When sound card is being charged, the LED lights will turned red one by one.

15. Power button
Turns on/off device.
Hold power button for 3 seconds to turn on/off sound card.

16. On/Off switch of buttons background light
The lamp is on by default, hold the power button for 1s to turn off light.
To active light again, please hold the power button for 1s.

17. DC=5V USB port
It can be used to charge Maonocaster E2.

18. USB=C port
It is for audio signal line out/in, can be connected to PC/smart phones to record. This USB-C port cannot be used to charge sound card.

19. Pod 1,2 output port
Maonocaster E2 provides two ports to output reverb audio to mobile devices like phones, iPads via live streaming platforms.

20. Speaker output port
It is for speakers and headphones.

21. Music input port
Connect with devices to input external audio to sound card and play the audio as streaming background music.

22. Mic 2 input port
Connect 3.5mm condenser mic to get mic input. Recommended mic: Maono PM325/PM350.

23. Mic 1 adjustment
Adjust the gain according to your microphone type and sensitivity.

24. Instrument input port
Connect instruments like guitar and electronic drum via 6.35mm input port.

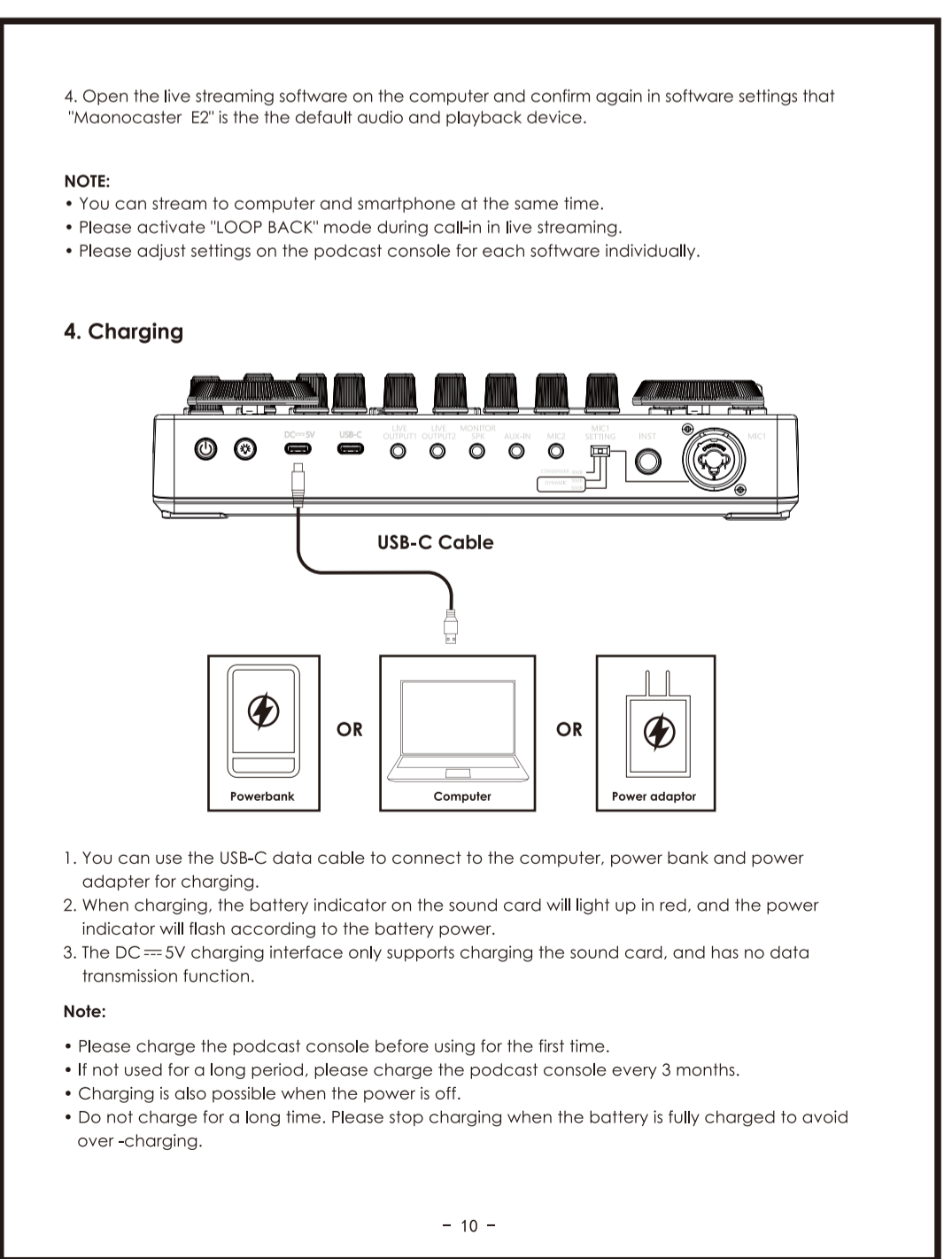
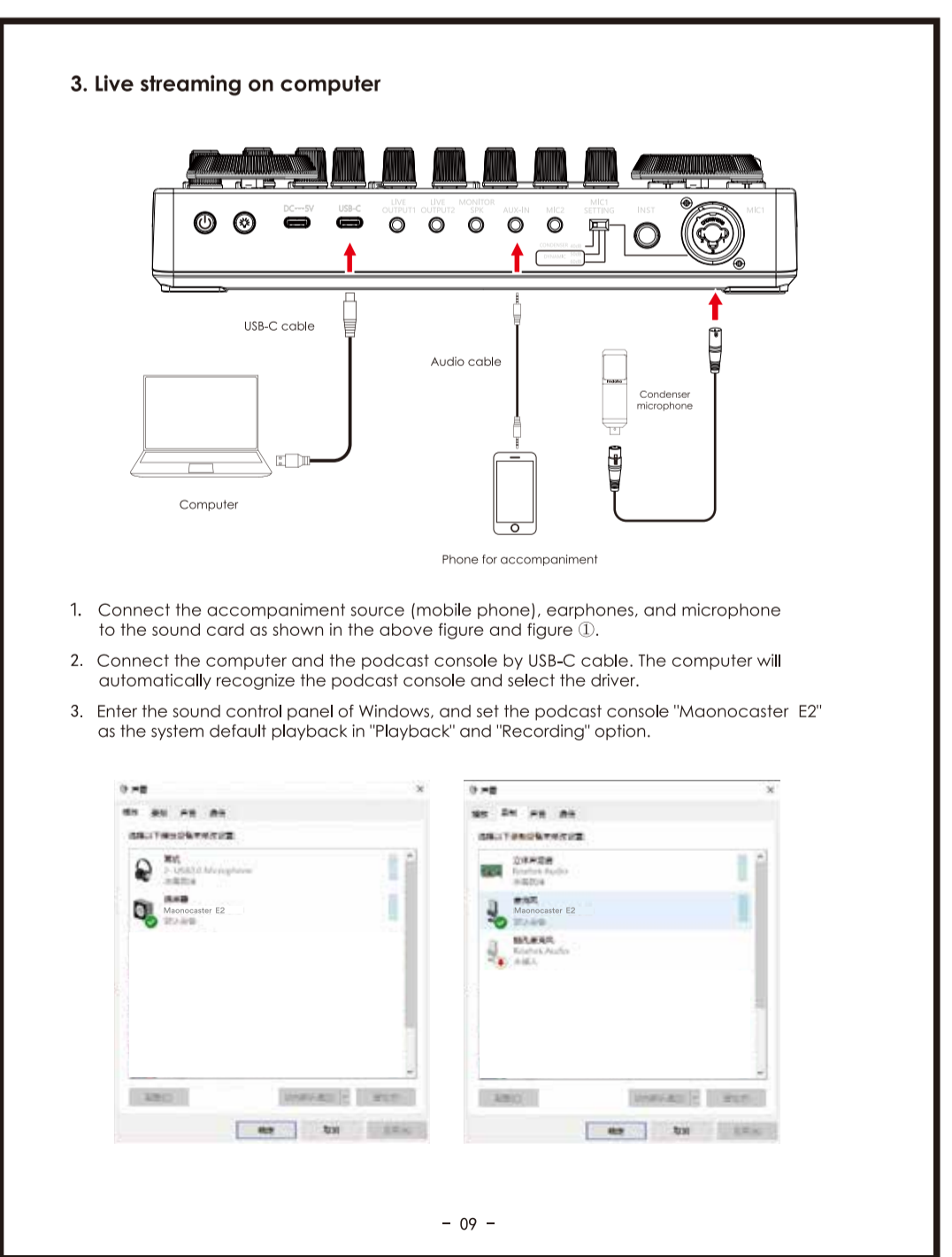
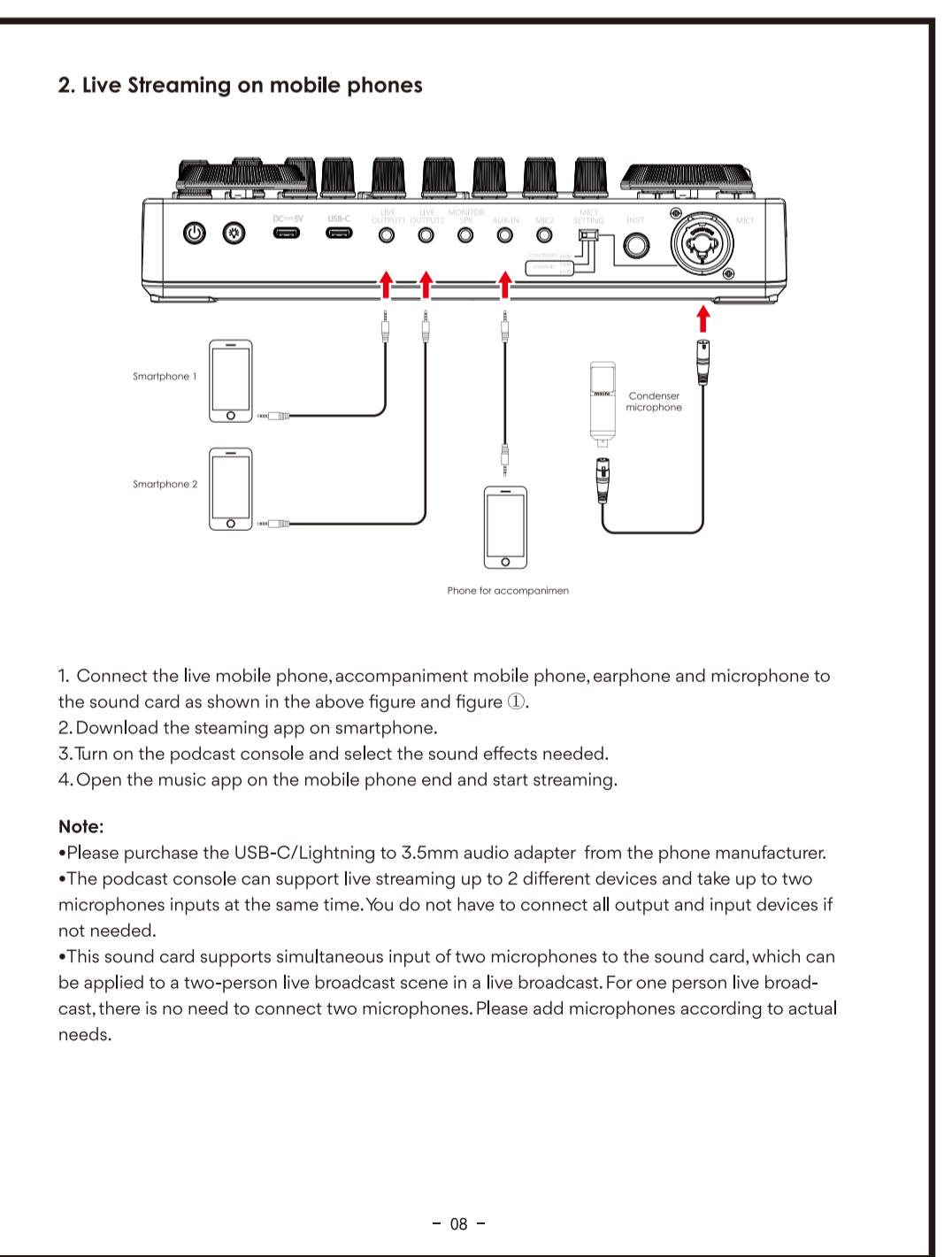
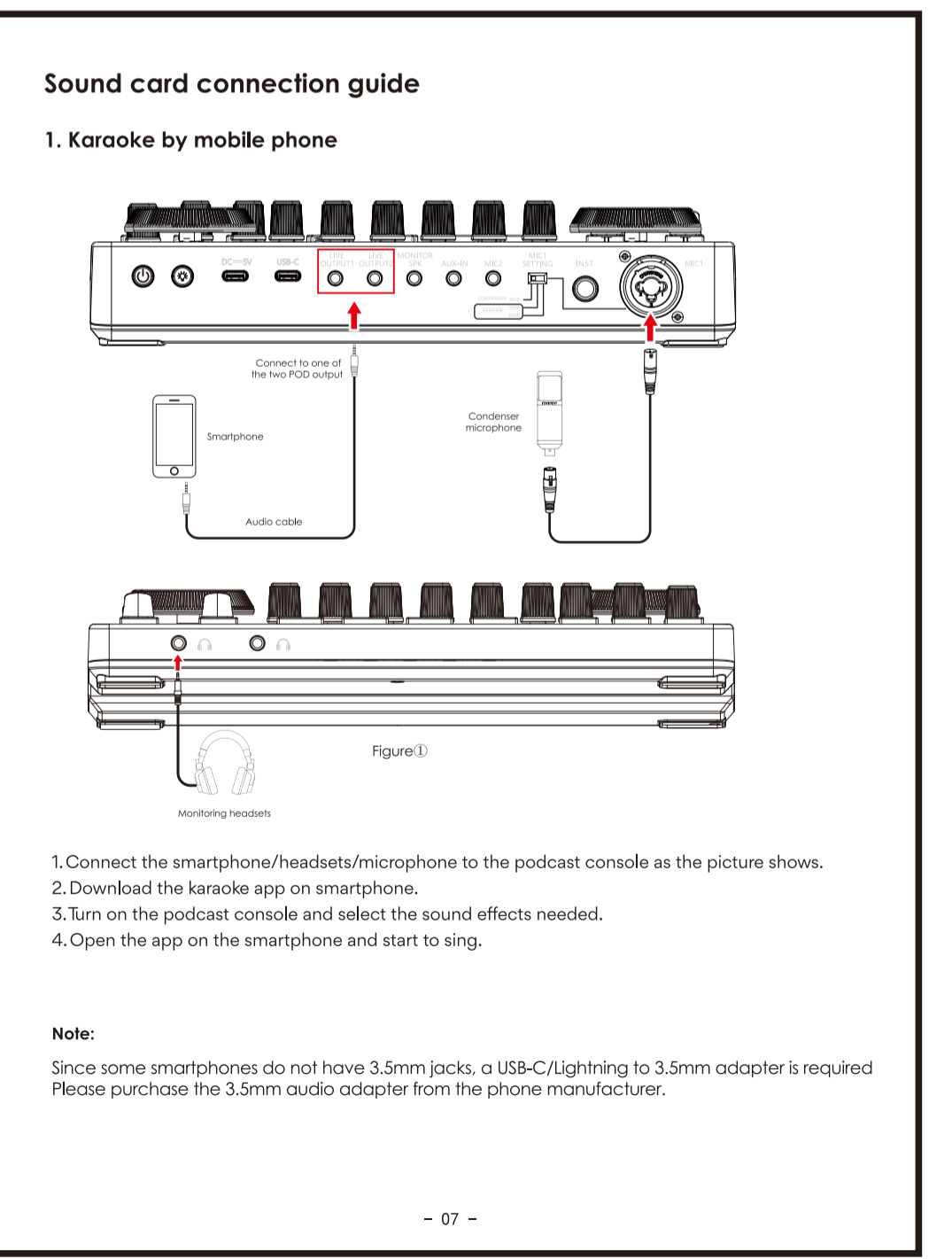
25. Mic 1 input port
Connect XLR or 6.35mm mics via the port and power them with 48V phantom power by switching on 48V phantom power button.
The XLR Mic input port supports XLR or 6.35mm Mic. Switching on 48V phantom power button to power mics. Recommended mic: Maono PM320/PM500.

26. Monitor headset jack
2 headset 3.5mm ports, supports TRS/TRSS headphone.

Model No.: AME2

Technical Support:
support@maono.com
www.maono.com

CE, FCC, UK, RoHS, Made in China



5. Bluetooth Connection
This podcast console has a Bluetooth connection feature (refer to item 14 in the function introduction), which can be connected to a smartphone for live accompaniment.

1. Turn on the podcast console, the Bluetooth light on the front of the sound card starts to flash.

2. Search for the device in the Bluetooth menu of the phone, find the Bluetooth device of "MAONO E2", and choose it to connect.

3. After the phone is connected to the podcast console, the Bluetooth light stops flashing.

4. Please connect the mobile phone to the podcast console through Bluetooth and set up the accompaniment music player on the mobile phone in advance.

5. Open the live broadcast software on the mobile phone or computer for live streaming.

Notes:
Bluetooth connection is limited by distance. Please do not place the too far away from the podcast console to avoid interference.
Bluetooth feature is only for accompaniment music playback.

6. Troubleshooting

6.1 Cannot boot
1. Please check if the podcast console has power, please charge it and then turn it on.
2. You need to long press the "O" for more than three seconds to turn it on.

6.2 No sound from accompaniment music
1. Please check whether the external audio source is connected to the accompaniment interface of the podcast console.
2. Please check whether the accompaniment volume control knob on the right is turned on.
3. Please check the volume of the accompaniment device.

6.3 No sound from headphones
1. Please check whether the headphone cable is inserted into the correct interface. It should be inserted to the "headset" or "sound" interface.

6.4 No sound from the microphone
1. Please check whether the microphone is correctly connected to the microphone interface. If not, please try again.
2. Please check whether the microphone knob on the left is turned on. Turn the knob clockwise to increase the microphone volume slowly.
3. Please check whether the "monitor fader" of the sound card upwards. You can gradually increase the volume by pushing it up.
4. Please confirm with your microphone dealer whether your microphone can be used with this podcast console, or consult us for the recommended microphone model.

6.5 No sound in live broadcast
1. Please check whether the "recording" knob on the podcast console is turned on, and rotate the "recording knob" clockwise to slowly increase the volume of the live broadcast.
2. Please check whether the podcast console "Maonocaster E2" has been set as the default playback and recording device of the live broadcast software. If not, please set refer to "Live Streaming on the Computer" part.

Notes:
To avoid personal injury or property damage caused by high temperature, noise, radiation, fire, machinery and other factors, please use this product in a safe environment, and read carefully and observe the following:
1. If you encounter product heat, smoke, odor, etc. during use, please turn off the power and cut the power in time, and send it to the seller for maintenance.
2. Please do not modify, disassemble or repair this equipment by yourself to avoid invalidating the product warranty or causing personal injury. If necessary, please contact the distributor to deal with it.
3. This product should be used and stored in a dry, ventilated, and safe environment. Do not use this product in a humid, dusty environment.
4. Please avoid rain and dust entering the product to avoid short circuit. Close to the fire, collision and severe vibration will cause irreversible damage to the product damage.
5. Please do not use this product in the occasions prohibited by law, and follow the relevant safety regulations to use this product to avoid any accidents.
6. This product cannot be used as a children's toy, please place it out of the reach of children.

FCC Statement
This device complies with Part 15 of the FCC Rules. Operation is subject to the following two conditions:
1. This device may not cause harmful interference, and
2. This device must accept any interference received, including interference that may cause undesired operation.

Note
This equipment has been tested and found to comply with the limits for a Class B digital device, pursuant to Part 15 of the FCC Rules. These limits are designed to provide reasonable protection against harmful interference in a residential installation. This equipment generates uses and can radiate radio frequency energy and, if not installed and used in accordance with the instructions, may cause harmful interference to radio communications. However, there is no guarantee that interference will not occur in a particular installation. If this equipment does cause harmful interference to radio or television reception, which can be determined by turning the equipment off and on, the user is encouraged to try to correct the interference by one or more of the following:

Measures
Reorient or relocate the receiving antenna.
Increase the separation between the equipment and receiver.
Connect the equipment into an outlet on a circuit different from that to which the receiver is connected.
Consult the dealer or an experienced radio/TV technician for help.