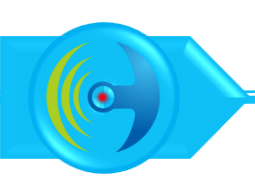


# 专业天线服务商

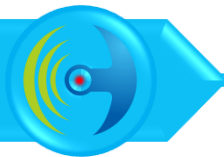
Professional antenna service provider



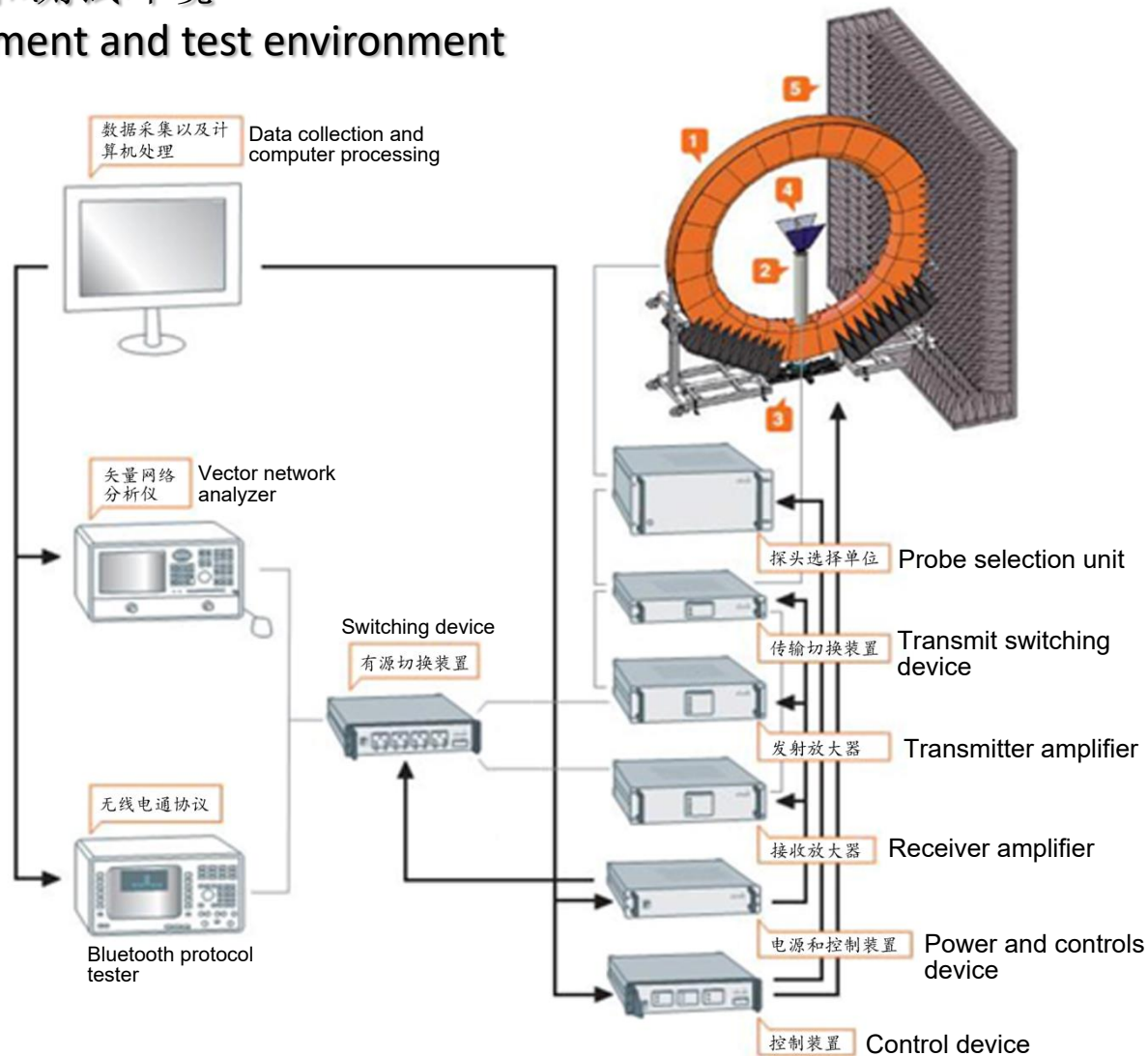
### Antenna specification

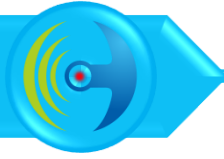
Antenna manufacturer:Shenzhen SiANGTE Technology Co., LTD  
Antenna type:PCB

Item Model	FS28MM
Antenna Model	FS28
test by	wei yue e
check	xiaxingxi
date	2022-10-26

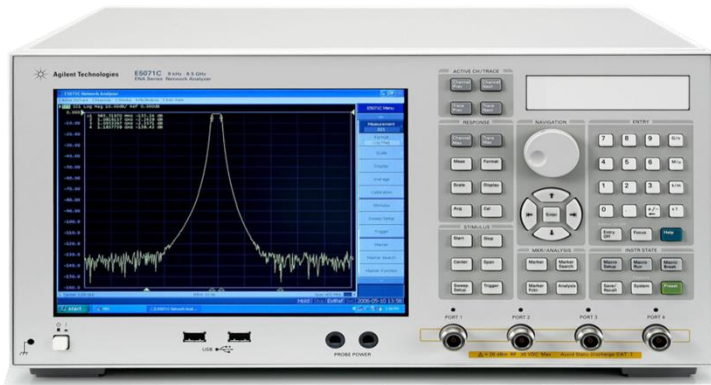


# 测试设备和测试环境 Test equipment and test environment





## 测试设备 Test equipment



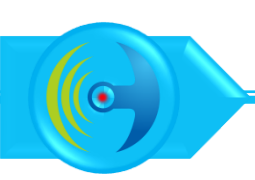
Agilent E5071C 矢量网络分析仪  
Vector network analyzer

- 频率: 300 kHz至8.5GHz  
Frequency

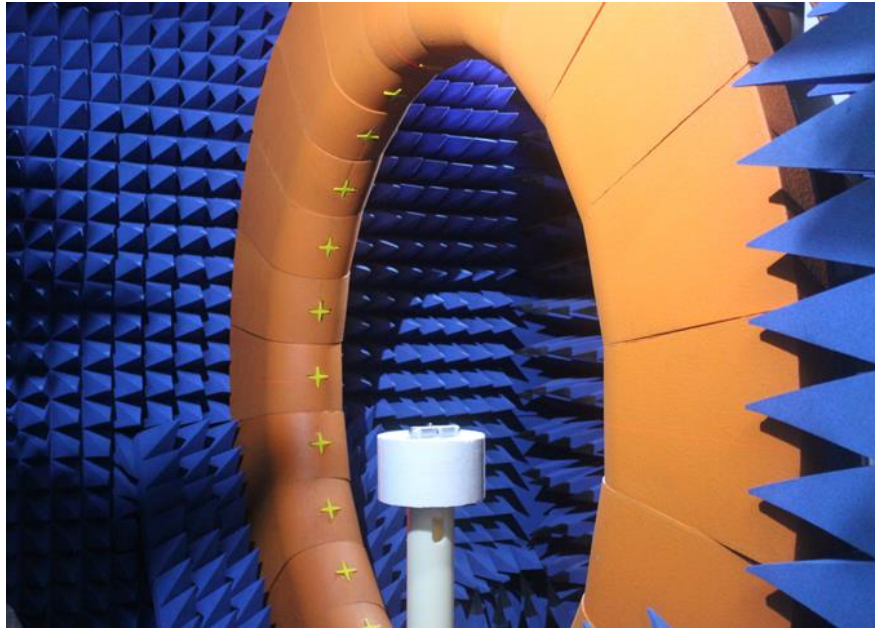


R&S CMW500 宽带无线通信测试仪  
Wideband radio communication tester

- GSM/3G/4G
- WIFI/ Bluetooth
- NB-IoT



## 测试设备 Test equipment



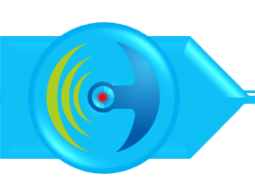
Probe microwave darkroom

➤ Fre: 0.4GHz至6GHz

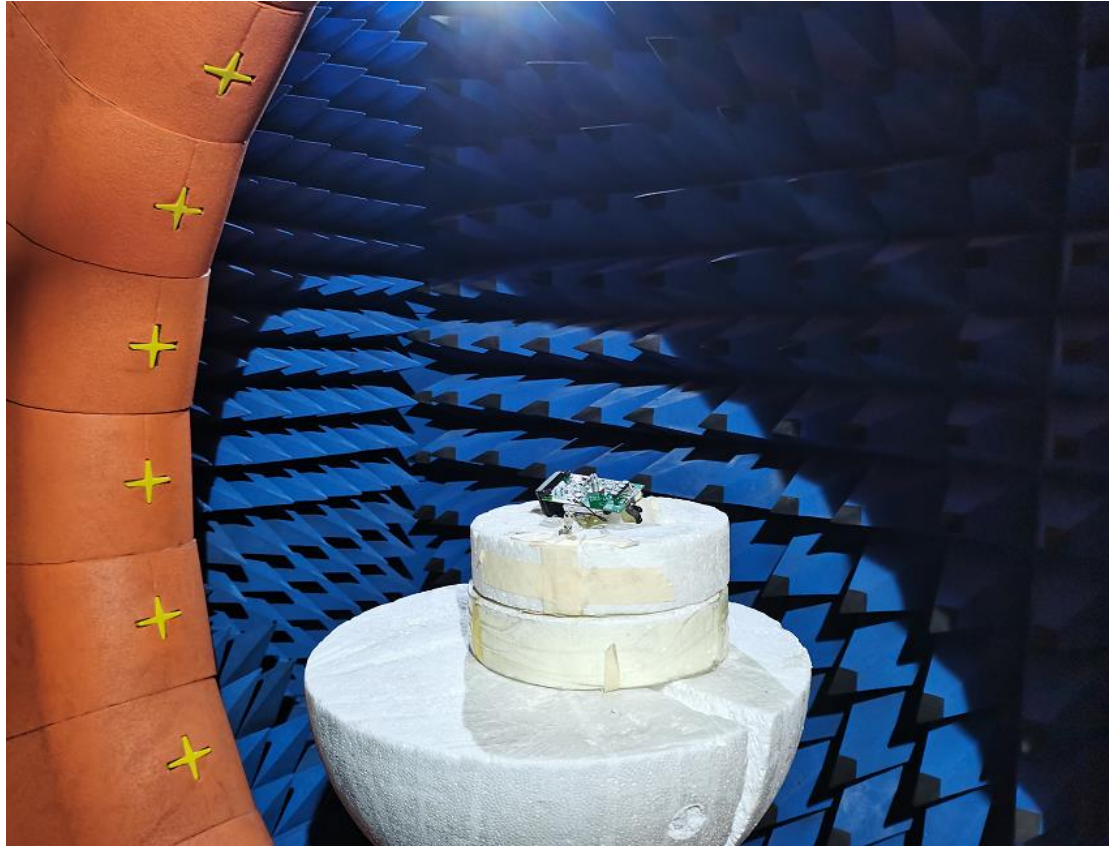
## 主要测试指标

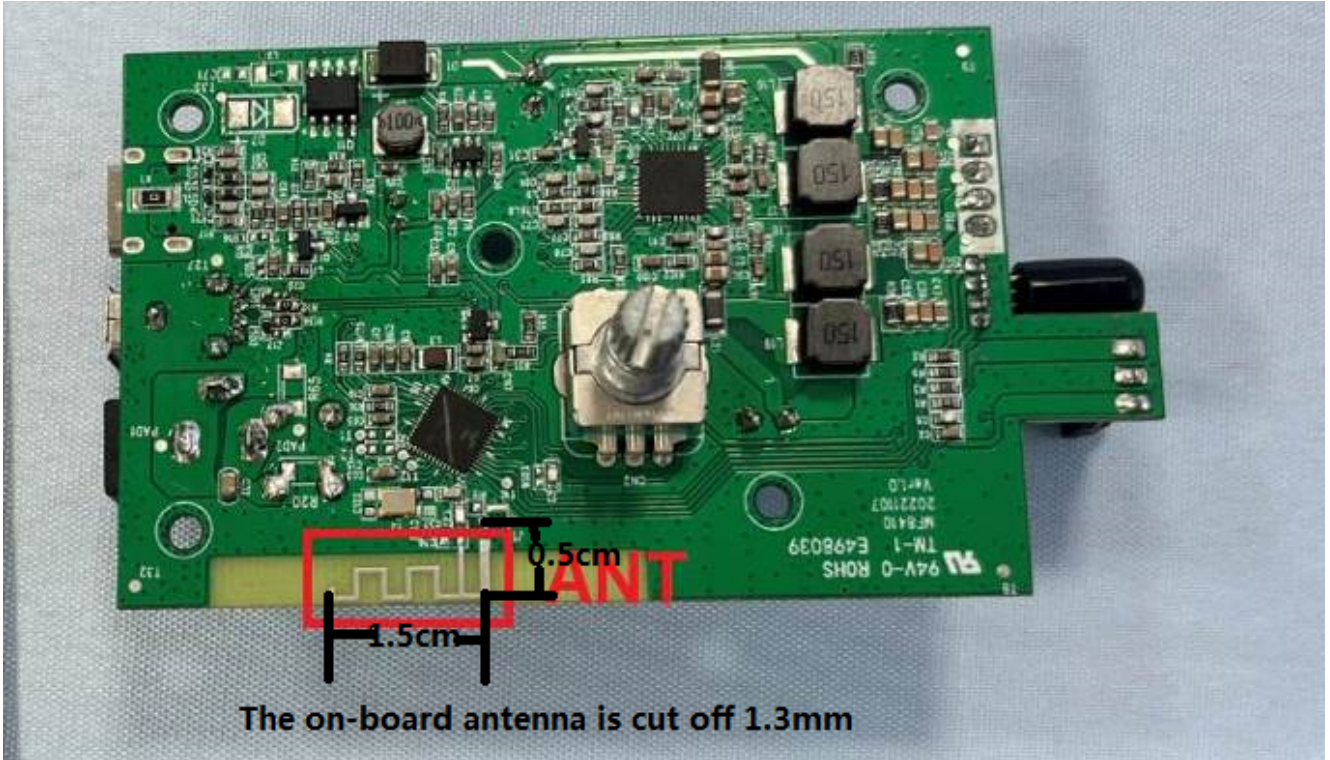
### Main test indicators

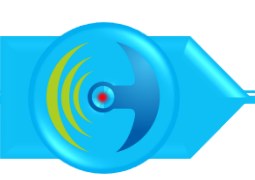
- ◆ 无源指标 Passive indicator
- ◆ 增益 gain
- ◆ 效率 efficient
- ◆ 3D方向图 3D direction diagram
  
- 有源指标 Active indicator
- TRP总辐射功率 TRP total radiated power
- TIS总接收灵敏度 Total receiving sensitivity of TIS



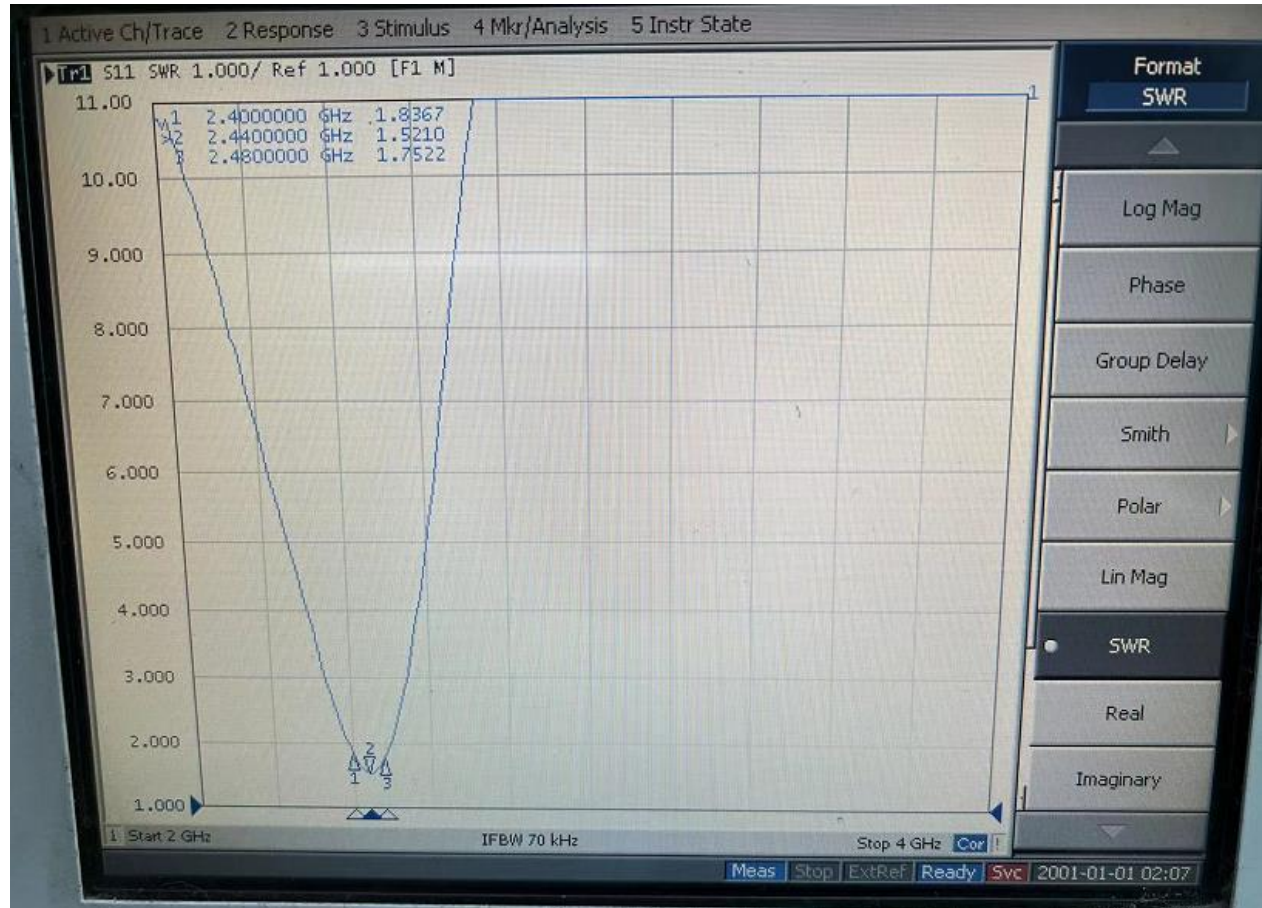
测试拍照  
Test photos



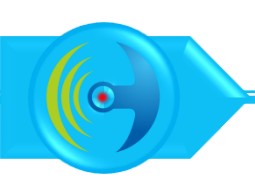




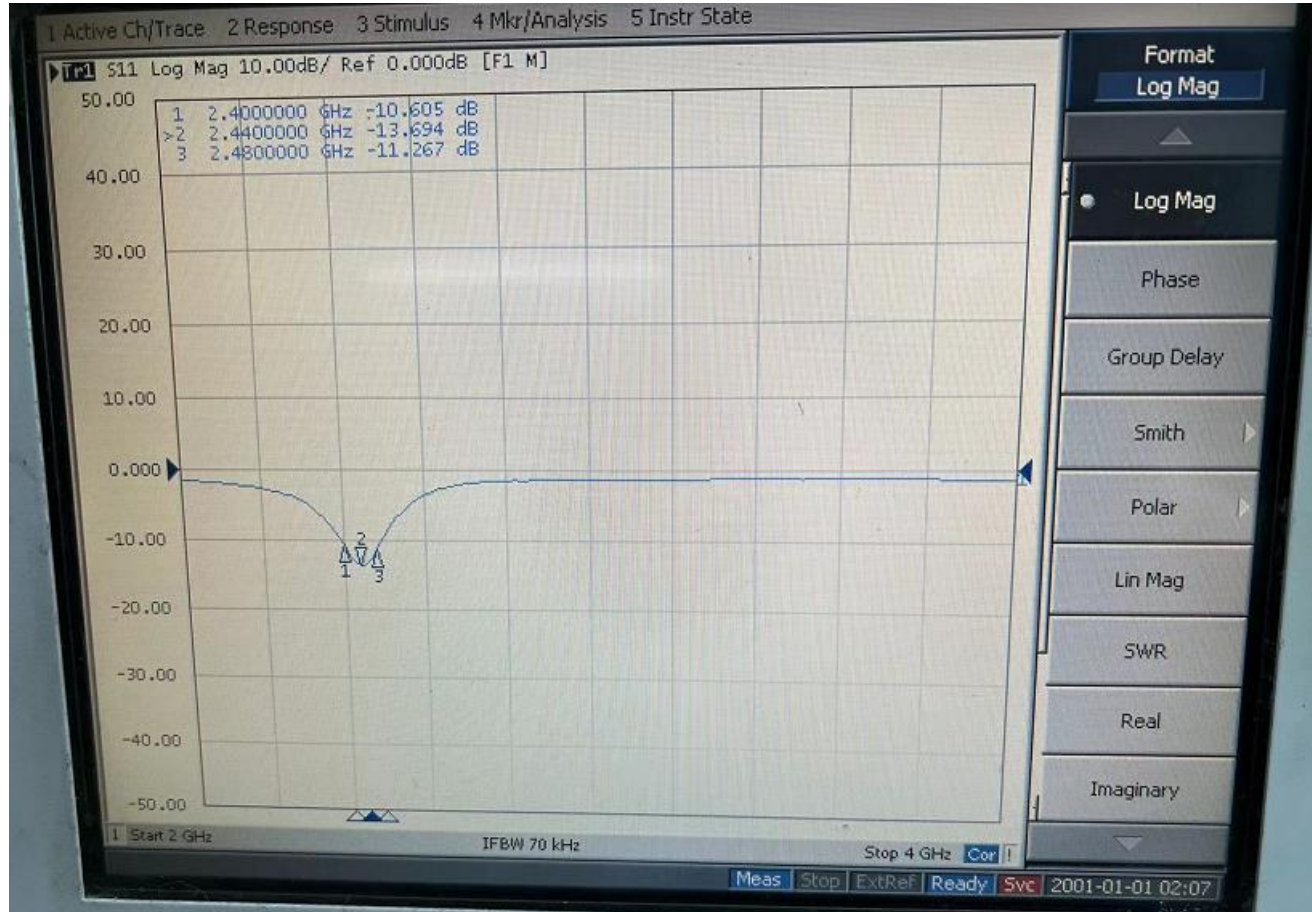
# 天线驻波比 Antenna SWR

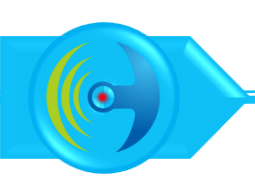






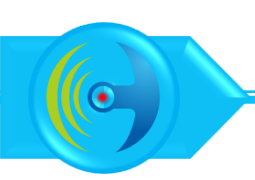
# 天线回波损耗 Antenna Return loss



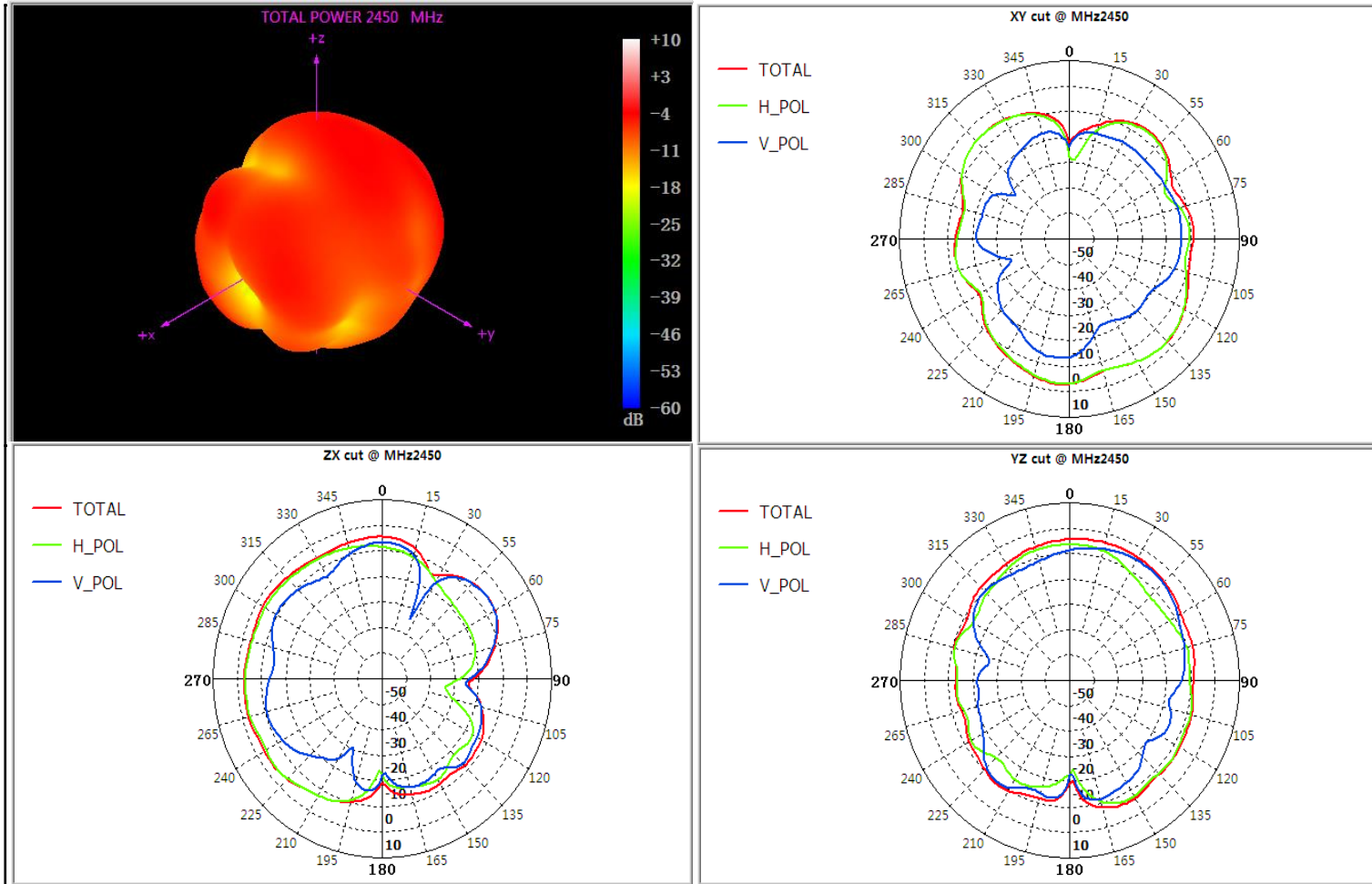


天线增益与效率  
Antenna gain and efficiency

天线		
Freq(MHz)	Efficiency (%)	Gian(dBi)
2400	18	-0.33
2410	18.65	0.01
2420	20.5	0.28
2430	21.78	0.44
2440	23.25	0.88
2450	24.48	0.93
2460	24.95	0.94
2470	26.48	1.08
2480	26.84	1.22
2490	28.19	1.52
2500	28.83	2.01



# 天线辐射方向图 Antenna Radiation Pattern



Thanks for your support!

感谢您的支持!

**Thanks for your support!**  
**感谢您的支持!**

深圳市宝安区西乡固戍恒南一路C栋303  
TEL:(86)755-23035723. FAX:0755-23036702  
E-mail:ant001@fmant.cn

ADD: 303, building C,GUSHU Hengnan Road,Xixiang,Baoan district Shenzhen